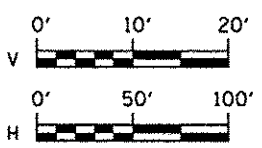
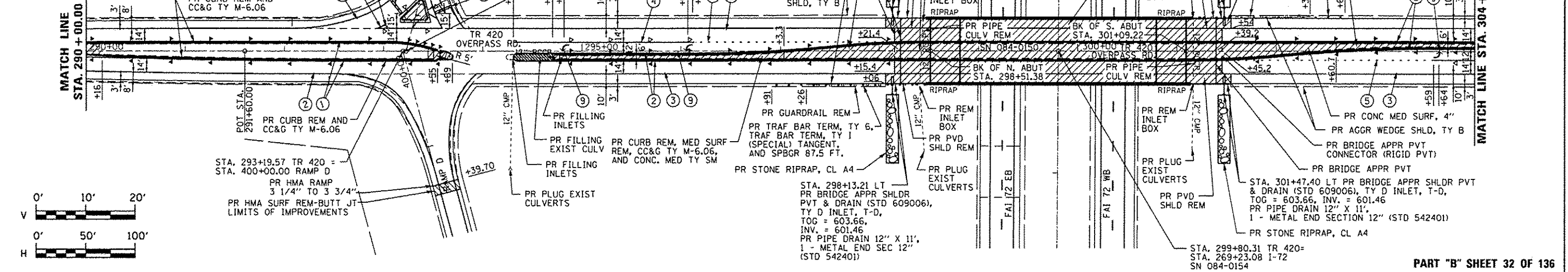


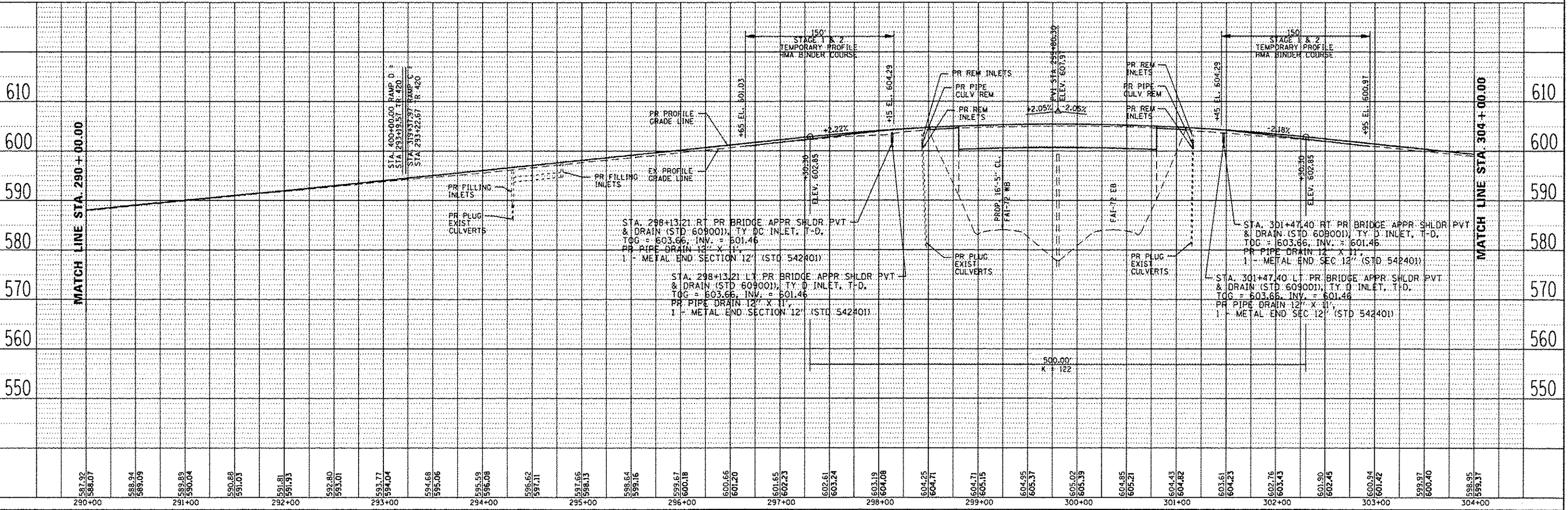
PAVEMENT MARKING LEGEND

- ① PR URETHANE PAVEMENT MARKING, LINE 5" (SOLID YELLOW)
- ② PR URETHANE PAVEMENT MARKING, LINE 5" (SOLID WHITE)
- ④ PR URETHANE PAVEMENT MARKING, LINE 6" (SOLID WHITE)
- ⑤ PR URETHANE PAVEMENT MARKING, LINE 5" (6' SKIP, 2' DASH)
- ⑥ PR PREFORMED PLASTIC PAVEMENT MARKING, TYPE B (INLAID), LINE 8" (SOLID WHITE)
- ⑦ PR PREFORMED PLASTIC PAVEMENT MARKING, TYPE B (INLAID), LINE 12" (SOLID WHITE)
- ⑧ PR PREFORMED PLASTIC PAVEMENT MARKING, TYPE B (INLAID), LINE 24" (SOLID WHITE)
- ⑨ PR PREFORMED PLASTIC PAVEMENT MARKING, TYPE B (INLAID), LETTERS & SYMBOLS (SOLID WHITE)
- ▽ PR RAISED REFLECTIVE PAVEMENT MARKER, ONE-WAY, WHITE
- ▲ PR RAISED REFLECTIVE PAVEMENT MARKER, ONE-WAY, AMBER

DATE	
BY	
REVISION	
NO.	
PLAN	
NO.	
DATE	
BY	
REVISION	
NO.	



DATE	
BY	
REVISION	
NO.	
PROFILE	
NO.	
DATE	
BY	
REVISION	
NO.	



USER NAME = sparksg	DESIGNED - BTM	REVISED -	<p align="center"><b>STATE OF ILLINOIS</b> <b>DEPARTMENT OF TRANSPORTATION</b></p> <p align="center"><b>PLAN &amp; PROFILE SHEETS</b> <b>TR 420 (OVERPASS RD.)</b></p>	F.A.I. RTE. 1-72	SECTION	COUNTY SANGAMON	TOTAL SHEETS 194	SHEET NO. 90
PLT SCALE = 1/8" = 1' - 0"	DRAWN - BTM	REVISED -		SCALE:				
CHECKED - JSA	DATE - 9/20/12	REVISED -		SHEET NO. OF SHEETS	STA. TO STA.	(84-10-1RS-3,84-10-2RS-4)BR.1 CONTRACT NO. 72C90 ILLINOIS FED. AID PROJECT		
PLT DATE = Sep-05-2013 09:14:25AM								

FILE NAME = c:\pwworkspace\sparksg\9359822\0672C90.sht,prof 1-28 02.dgn