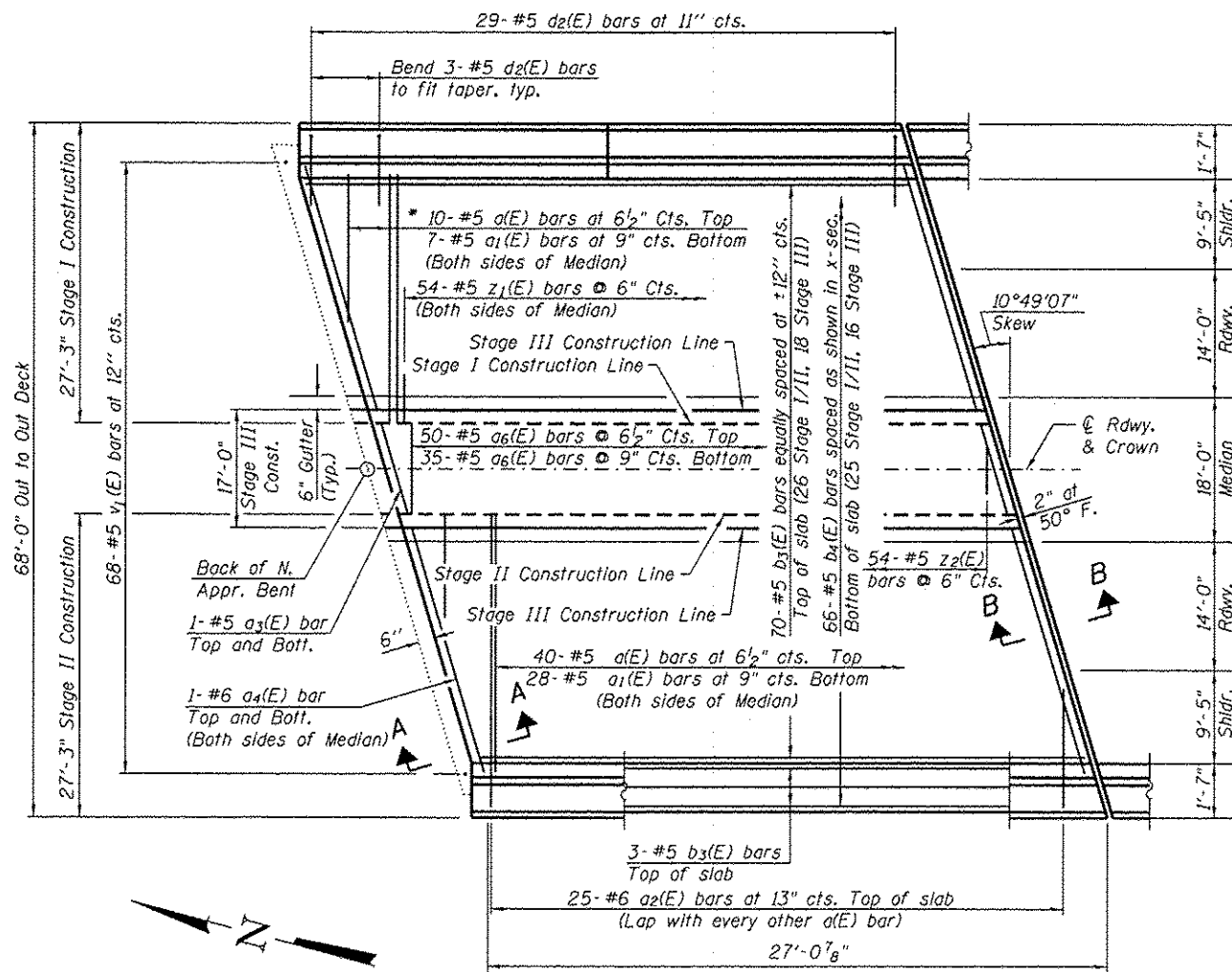


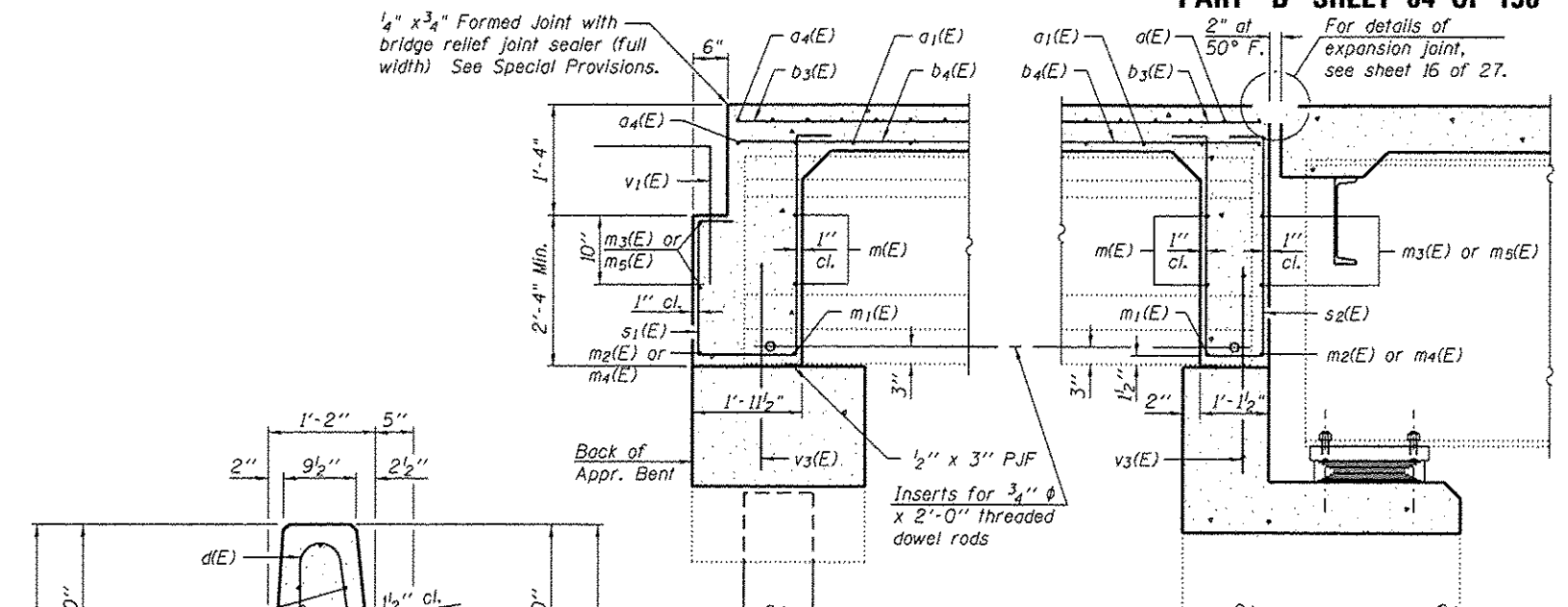
INSIDE ELEVATION OF PARAPET

Order a(E) and a1(E) bars full length. Cut to fit skew and use remainder of bars in opposite end.



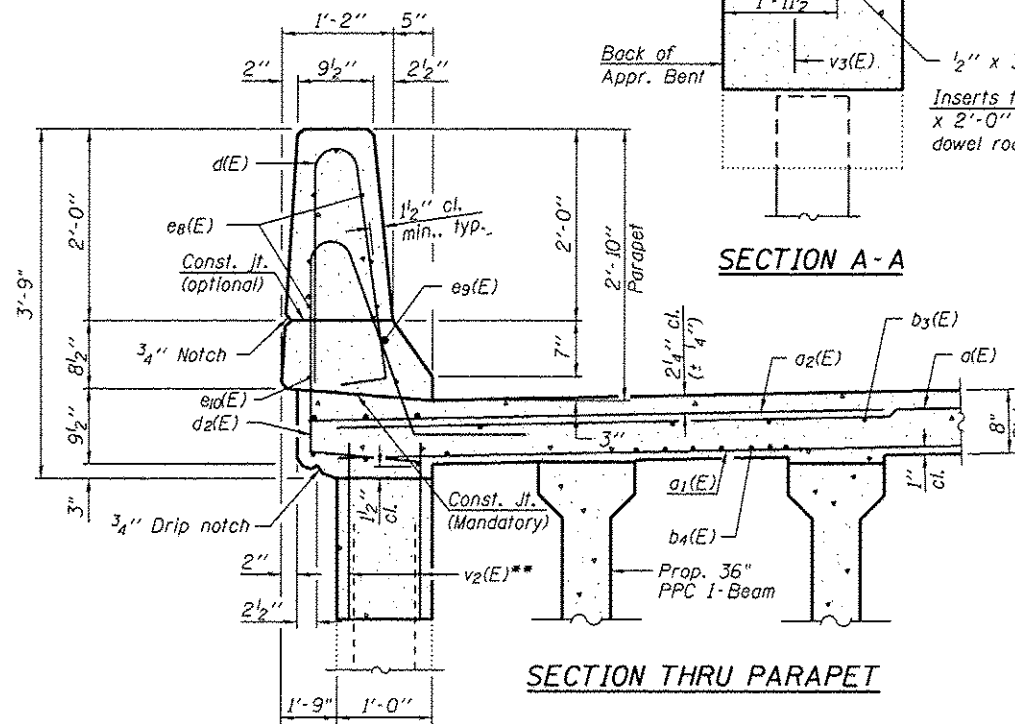
PLAN

(N. Approach Span Shown, S. Approach Span Similar)



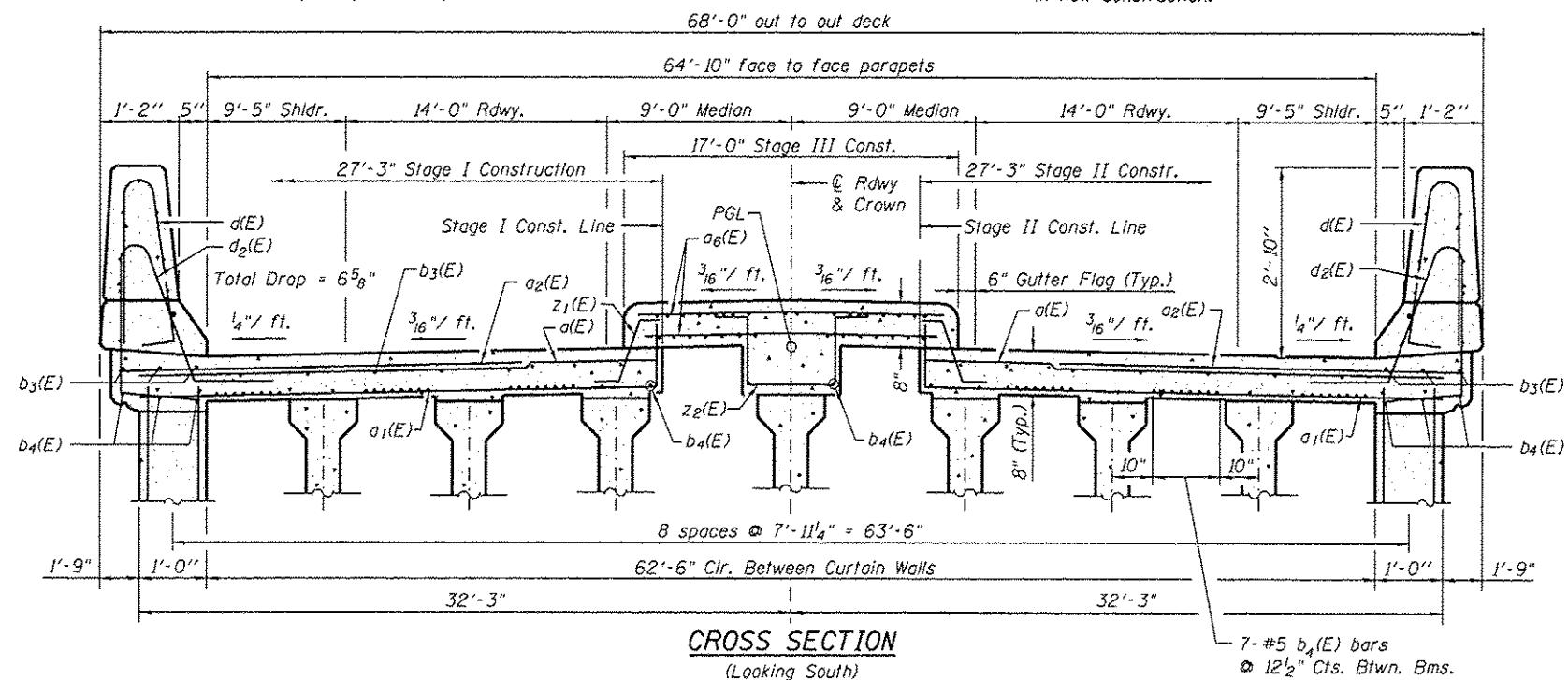
SECTION A-A

SECTION B-B



SECTION THRU PARAPET

v2(E) bars shall tie existing bars in curtain wall to the new construction. Existing vertical bars shall be cleaned, and straightened and will overlap v2(E) bars a minimum of 2'-0" when incorporated in new construction.



CROSS SECTION

(Looking South)