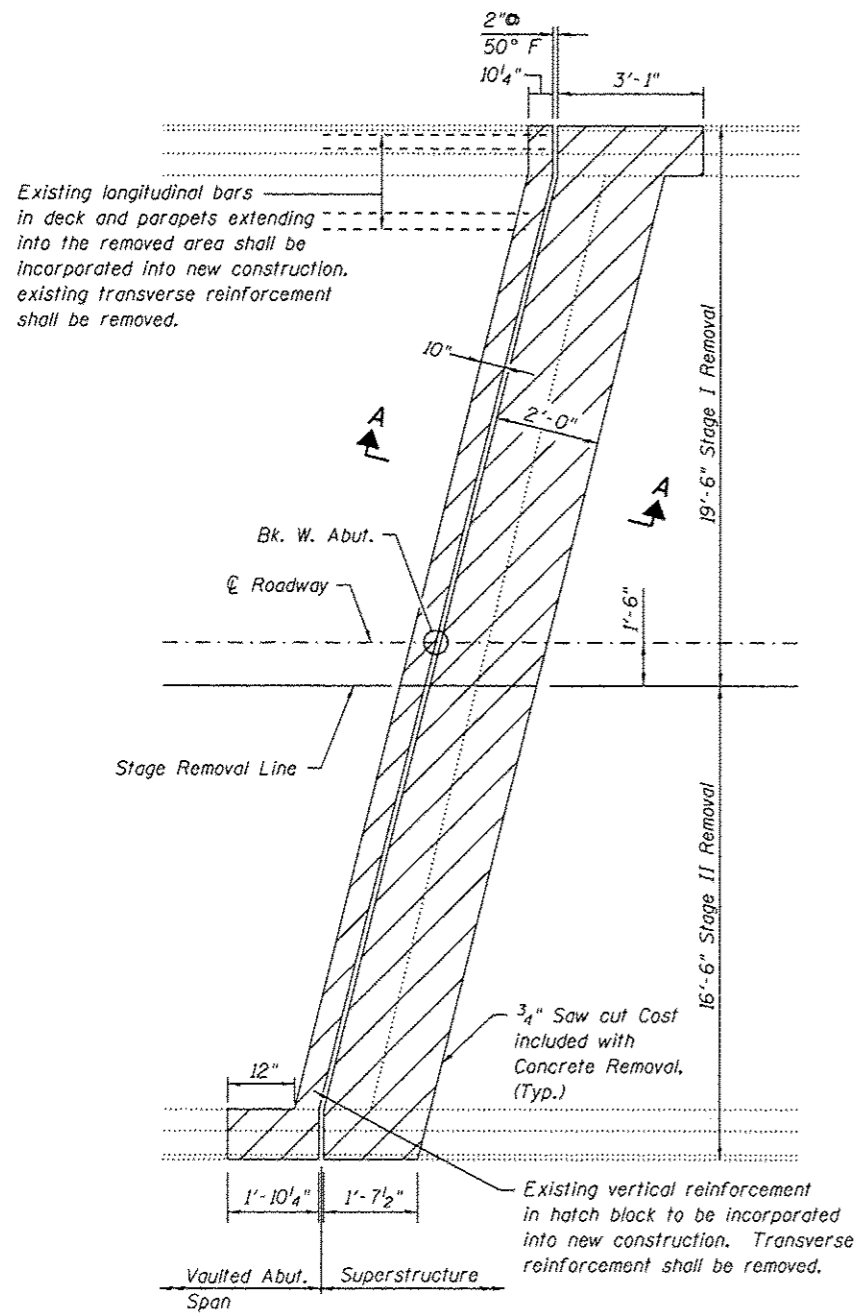


NOTES:

Existing reinforcement shall be cleaned and incorporated into the new construction. Cost included with Concrete Removal.

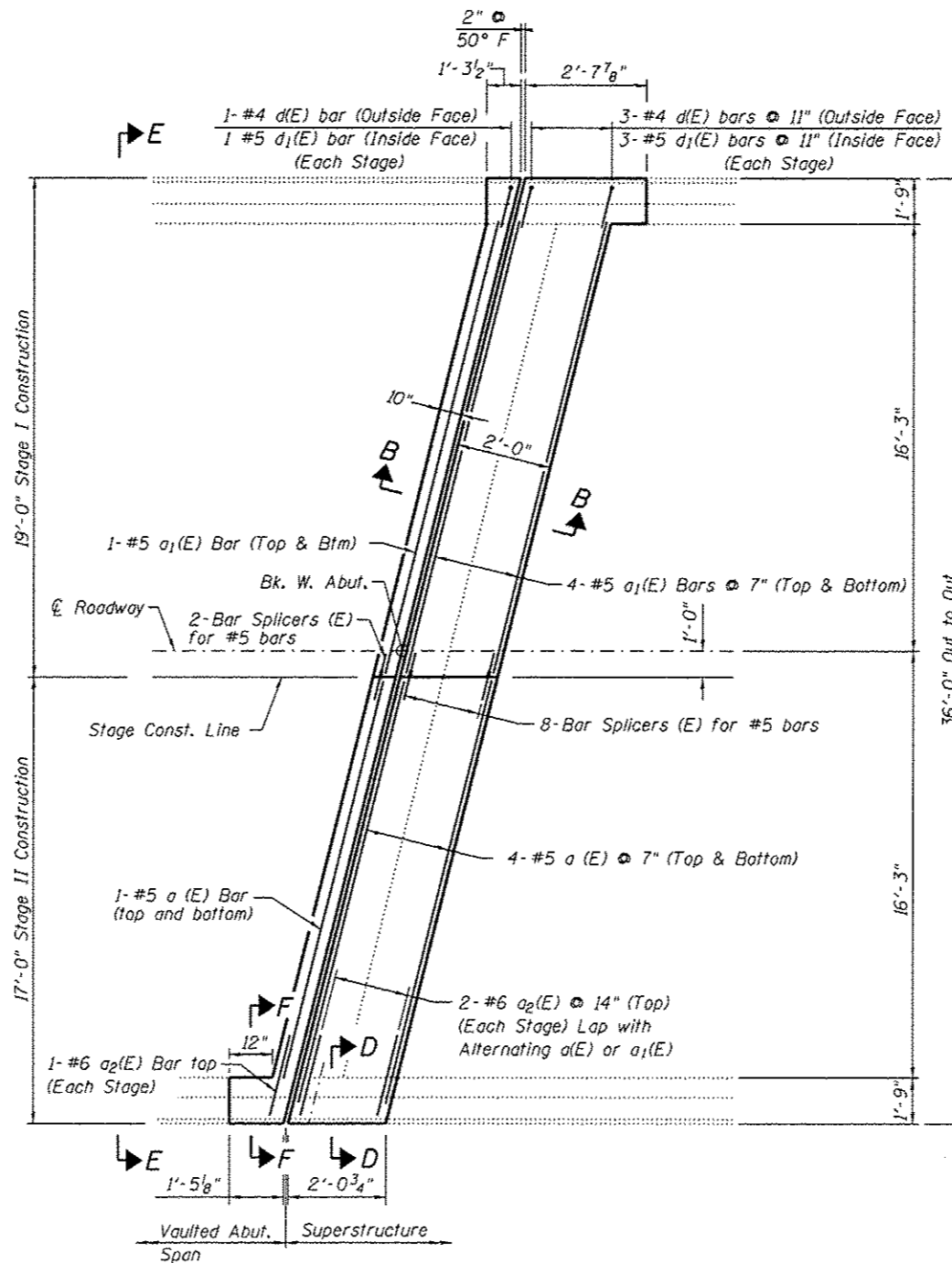
Any reinforcement bars that are damaged during concrete removal operations shall be repaired or replaced using an approved bar splicer or anchorage system. Cost included with Concrete Removal.

Work this sheet with Sheet 4 of 8. Hatched areas indicate concrete removal.



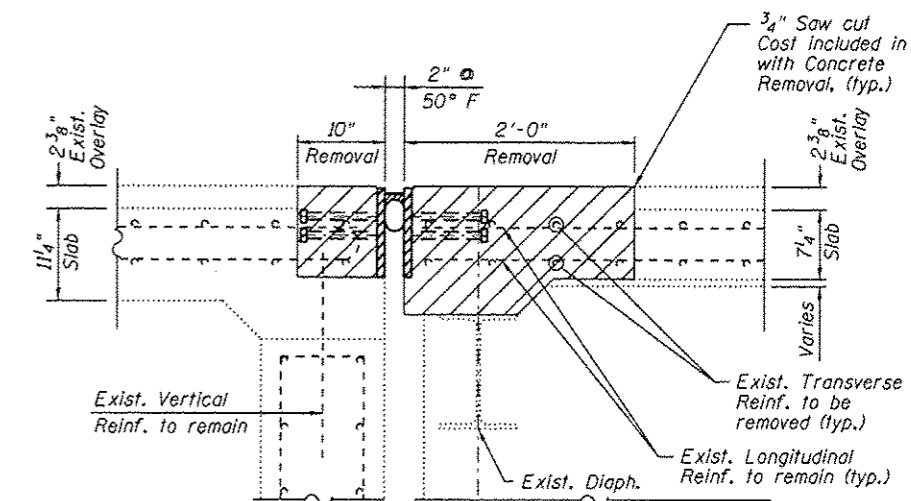
CONCRETE REMOVAL PLAN

(W. Abut. Shown, E. Abut. Similar)



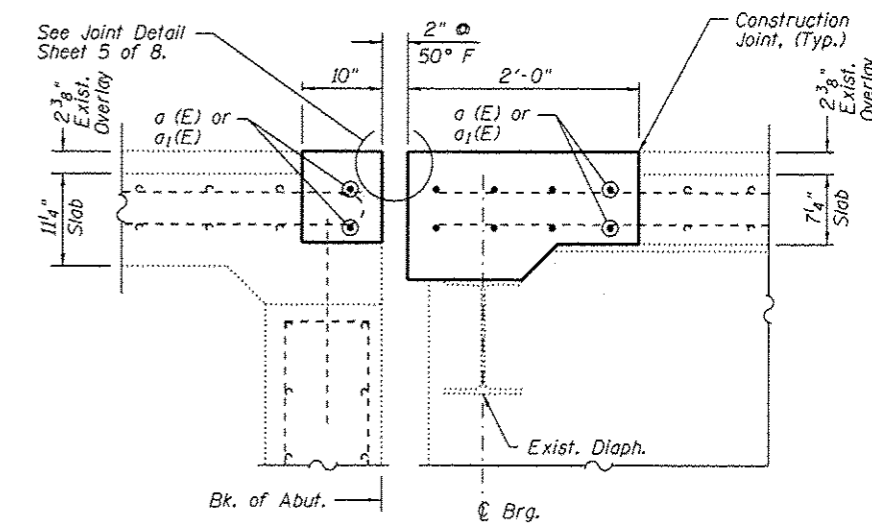
CONCRETE REPLACEMENT PLAN

(W. Abut. Shown, E. Abut. Similar)



SECTION A-A

(Showing removal of deck. Dimensions at Rt. L's)



SECTION B-B

(Showing Proposed Section at Roadway. Dimensions at Rt. L's)

FILE NAME : Oak Crest Rd. over 1-72.dgn	USER NAME :	DESIGNED - SAL	REVISED -	STATE OF ILLINOIS DEPARTMENT OF TRANSPORTATION	DECK JOINT REPAIRS (1 OF 2) OAK CREST RD. (TR-171) OVER F.A.I.-72 - S.N. 084-0151	F.A.I. RTE.	SECTION	COUNTY	TOTAL SHEETS	SHEET NO.
	PLOT SCALE :	CHECKED - MTH	REVISED -			72		SANGAMON	194	142
	PLOT DATE :	DRAWN - TJW	REVISED -			* (84-10-IRS-3, 84-10-2RS-RIBB.I)		CONTRACT NO. 72C90		
		CHECKED - MTH	REVISED -			FED. ROAD DIST. NO. 6 [ILLINOIS] FED. AID PROJECT				
SHEET NO. 3 OF 8 SHEETS										