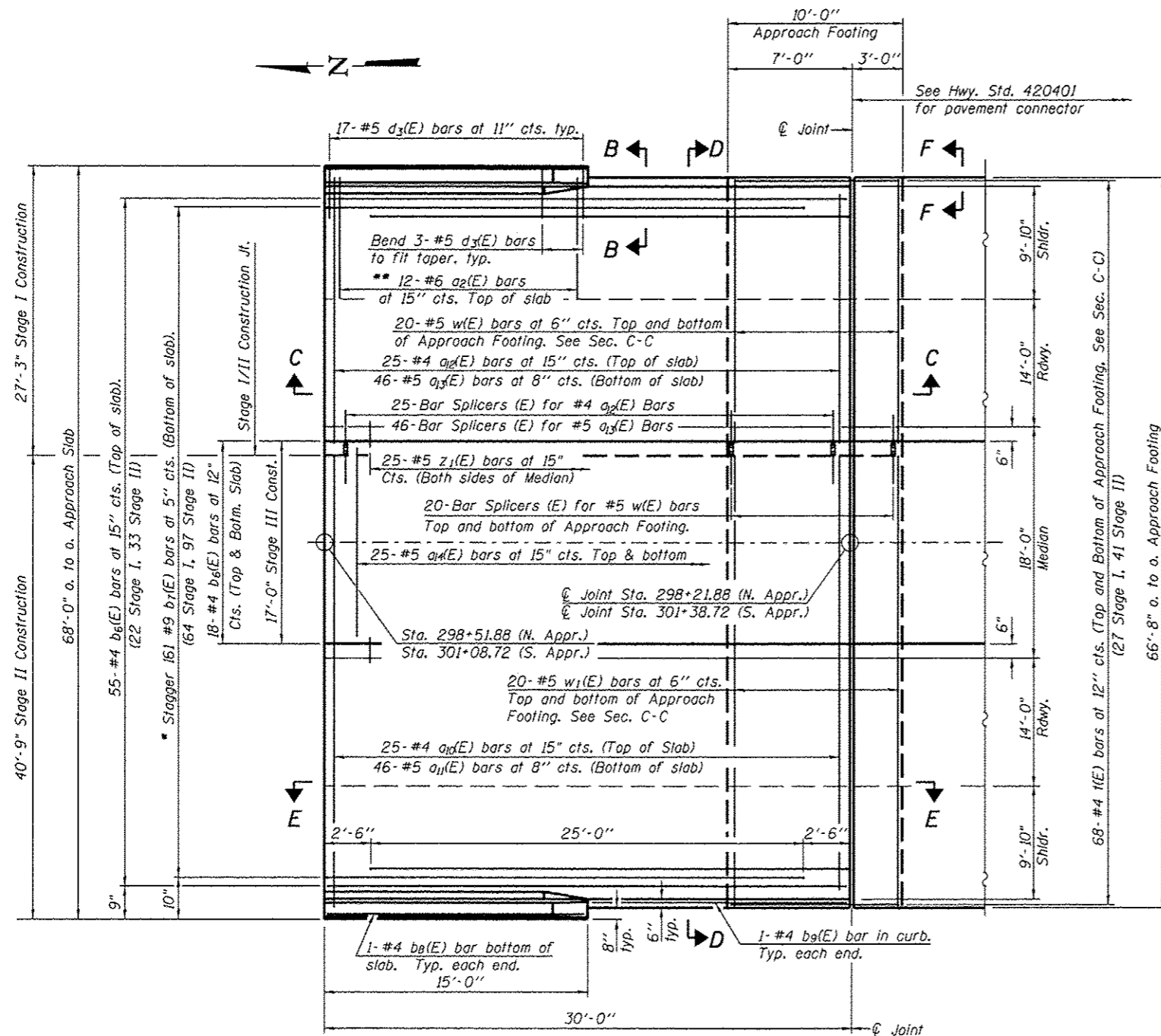
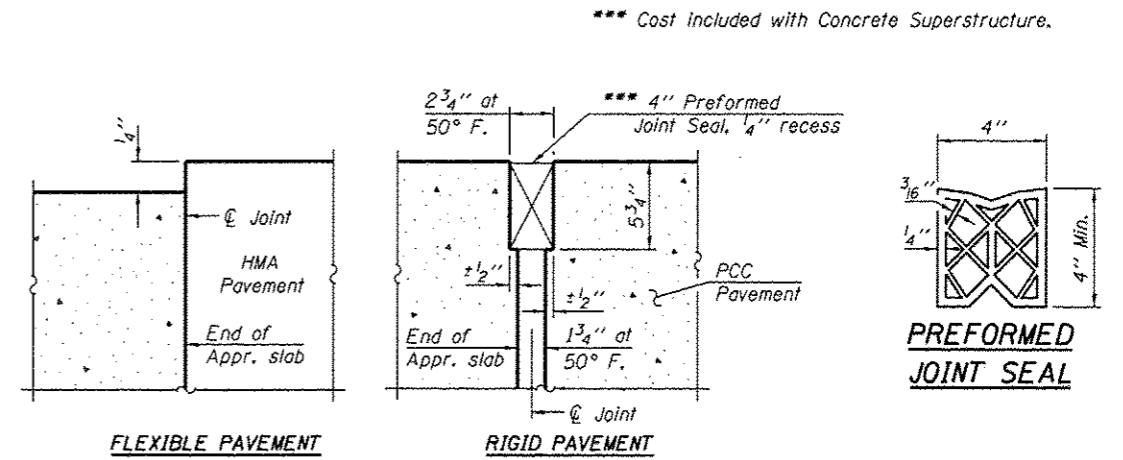


Notes:
 See sheet 13 of 25 for Sections C-C & D-D and View E-E.
 $a_{10}(E)$, $a_{11}(E)$, $a_{12}(E)$, $a_{13}(E)$ and $a_{14}(E)$ bar spacings measured along C Rdwy.

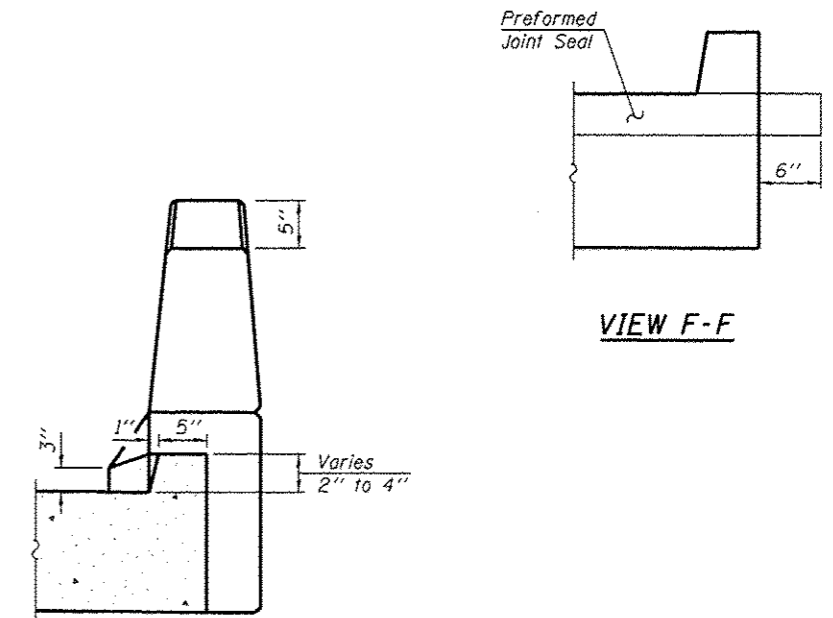


PLAN
 (South Approach Shown,
 North Approach Similar)

- * Tilt #9 $b_7(E)$ bars as required to maintain clearance.
- ** Space between $a_{12}(E)$ or $a_{13}(E)$ bars, typ. ea. parapet.



DETAIL A



VIEW B-B

(Sheet 1 of 2)

FILE NAME : TR428 over FAI-72.dgn	USER NAME :	DESIGNED - SAL	REVISED -	STATE OF ILLINOIS DEPARTMENT OF TRANSPORTATION	BRIDGE APPROACH SLAB DETAILS OVERPASS RD. (TR-420) OVER F.A.I.-72 - S.N. 084-0154	F.A.I. RTE.	SECTION	COUNTY	TOTAL SHEETS	SHEET NO.
PLOT SCALE :	CHECKED - MTH	REVISED -	72			(84-10-1,2) RS-3	SANGAMON	194	159	
PLOT DATE :	DRAWN - T.J.W	REVISED -	CONTRACT NO. 72C90							
	CHECKED - MTH	REVISED -	SHEET NO. 12 OF 25 SHEETS							
						FED. ROAD DIST. NO. 6 ILLINOIS FED. AID PROJECT				