

F.A.P. RTE.	SECTION	COUNTY	TOTAL SHEETS	SHEET NO.
664	(G)RS-15,TS-9,(21)RS-9,TS-2	SANGAMON	126	1
		ILLINOIS	CONTRACT NO. 72F29	

STATE OF ILLINOIS  
DEPARTMENT OF TRANSPORTATION  
DIVISION OF HIGHWAYS

**PROPOSED  
HIGHWAY PLANS**

FAP ROUTE 664 (WABASH AVE)  
SECTION (G)RS-15,TS-9, (21)RS-9,TS-2  
PROJECT ACNHP-ACHSIP-0664 (003)

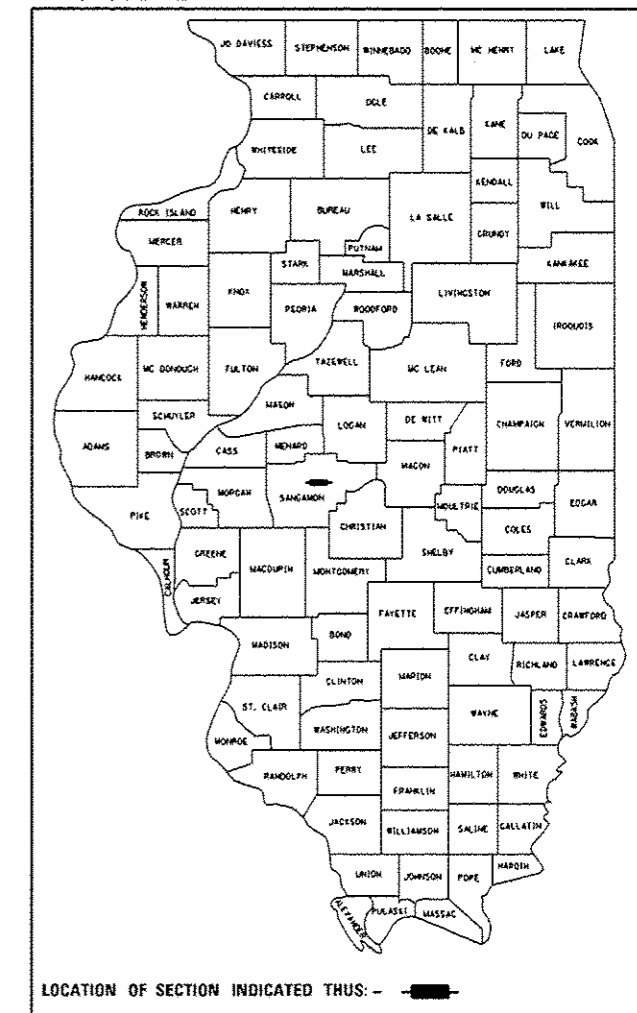
**SMART RESURFACING, INTERSECTION & SIGNAL IMPROVEMENTS  
SANGAMON COUNTY**  
C-96-044-12

**INDEX OF SHEETS**  
SEE SHEET 2

**HIGHWAY STANDARDS**  
SEE SHEET 2

ADT:  
24200 (2013)  
29000 (2033)  
PV 97.0%  
SU 1.8%  
MU 1.2%

D-96-044-12

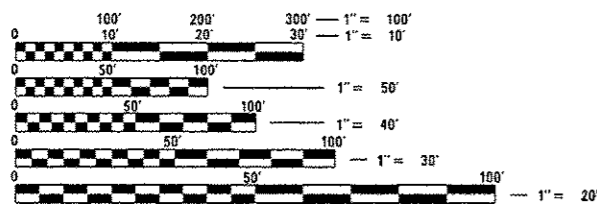


**STATION EQUATIONS:**

521 + 74.15 (BK) = 521 + 79.92 (AHD)  
554 + 99.18 (BK) = 555 + 00.00 (AHD)  
577 + 99.99 (BK) = 578 + 00.00 (AHD)  
603 + 08.51 (BK) = 83 + 28.31 (AHD)

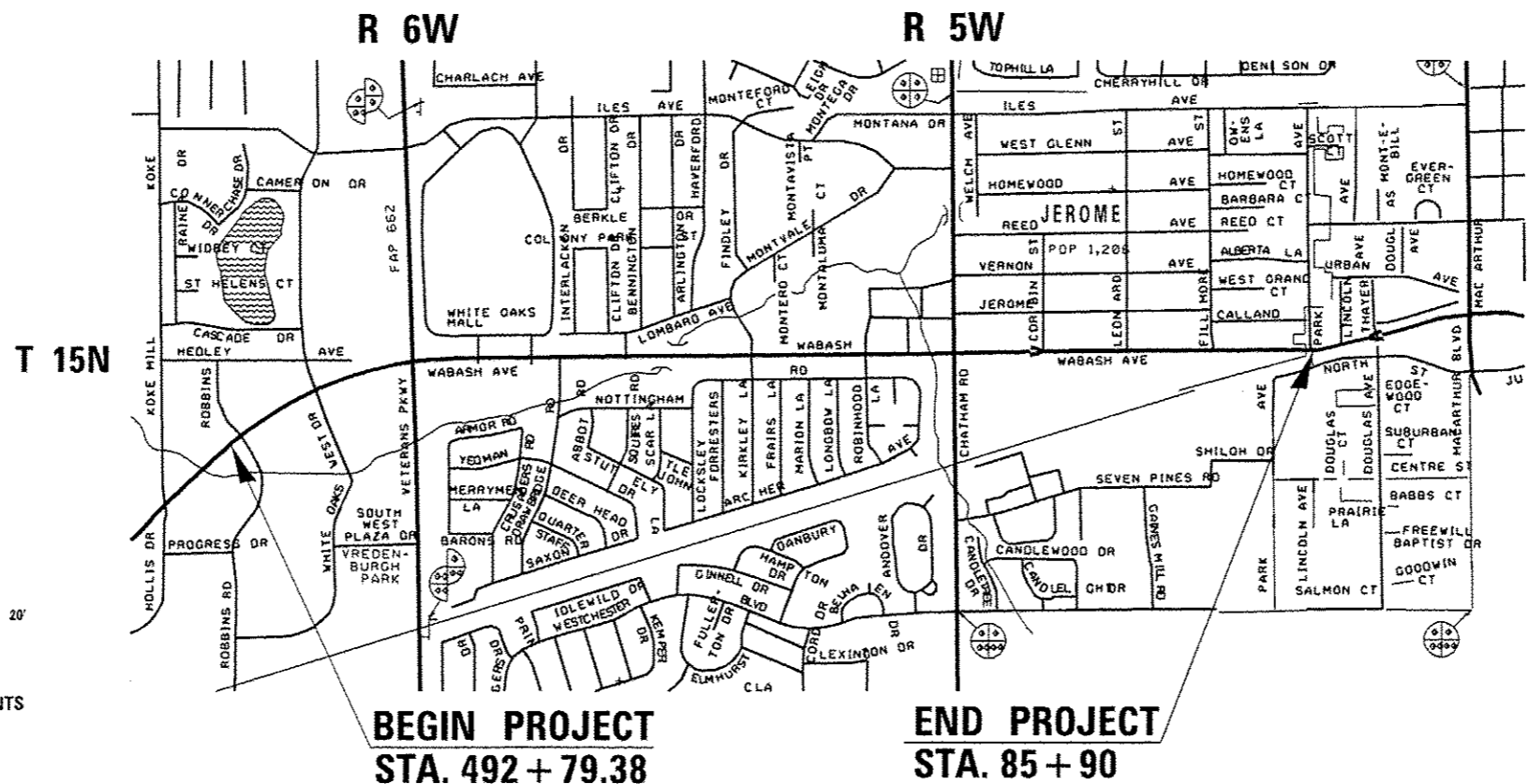
**PROJECT OMISSIONS:**

511 + 70.00 TO 515 + 00.00



FULL SIZE PLANS HAVE BEEN PREPARED USING STANDARD ENGINEERING SCALES. REDUCED SIZED PLANS WILL NOT CONFORM TO STANDARD SCALES. IN MAKING MEASUREMENTS ON REDUCED PLANS, THE ABOVE SCALES MAY BE USED.

J.U.L.I.E.  
JOINT UTILITY LOCATION INFORMATION FOR EXCAVATION  
1-800-892-0123  
OR 811



**LOCATION MAP**

GROSS LENGTH = 11,333.60 FT. = 2.146 MILES  
NET LENGTH = 11,003.60 FT. = 2.084 MILES

SENIOR TEAM ENGINEER: VINCE MADONIA 217-785-9046

TEAM MANAGER: TIM SLAGLE 217-785-5338

CONTRACT NO. 72F29

STATE OF ILLINOIS  
DEPARTMENT OF TRANSPORTATION  
DIVISION OF HIGHWAYS

SUBMITTED NOVEMBER 7, 2013  
Roger Z. Druhal  
DEPUTY DIRECTOR OF HIGHWAYS, REGION ENGINEER

Dec 6, 2013  
John D. Baranzelli, P.E.  
ENGINEER OF DESIGN AND ENVIRONMENT

Dec 6, 2013  
Omer Osman, P.E.  
DIRECTOR OF HIGHWAYS, CHIEF ENGINEER

**PRINTED BY THE AUTHORITY  
OF THE STATE OF ILLINOIS**