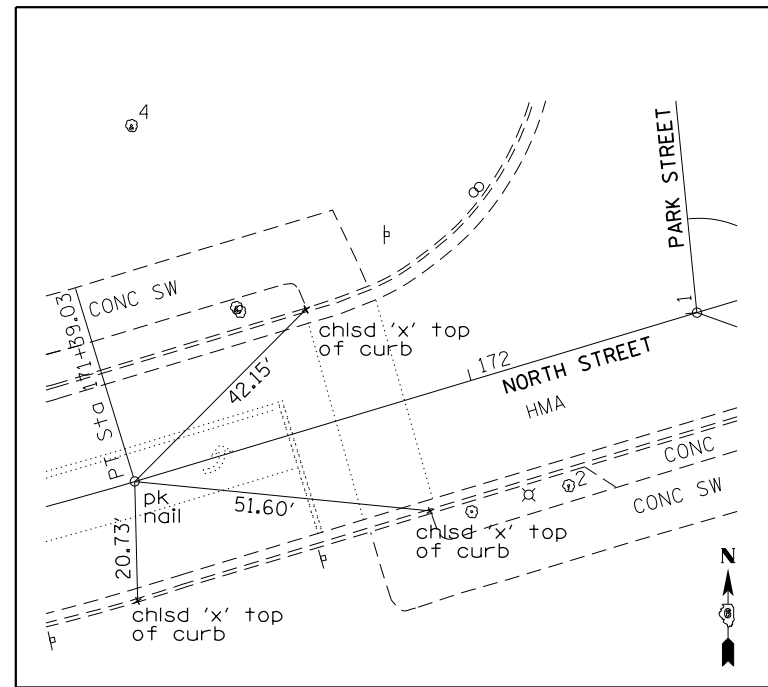
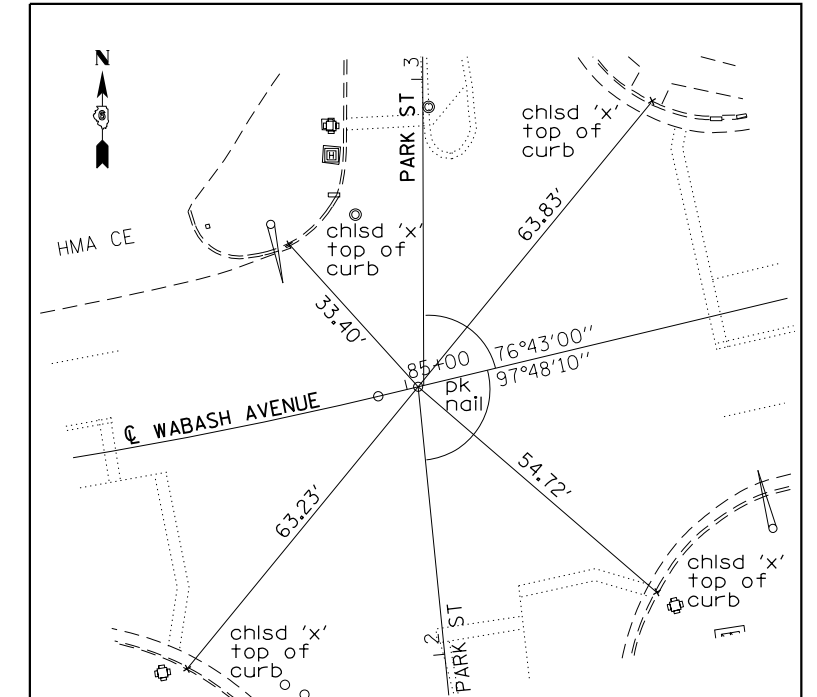


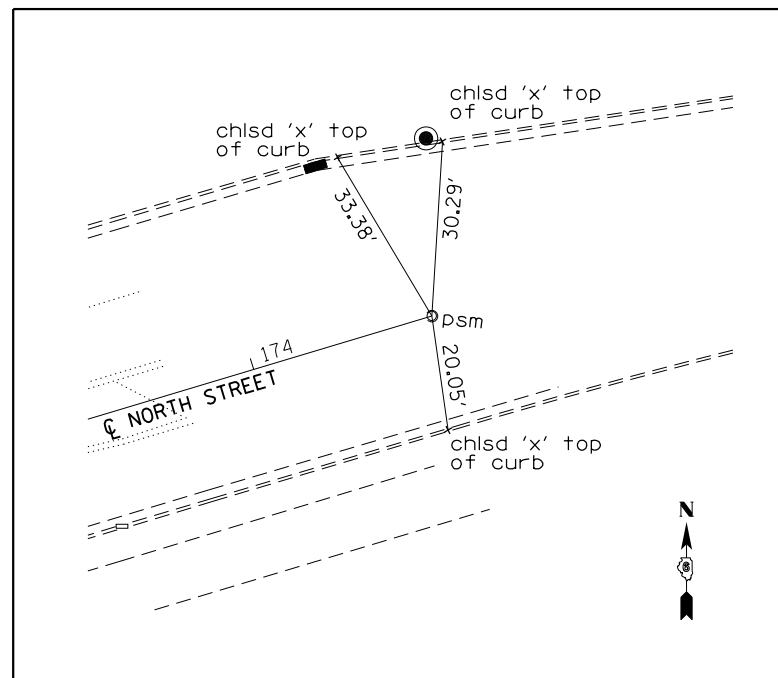
PC 92+93.07
(PERMANENT SURVEY MARKER)



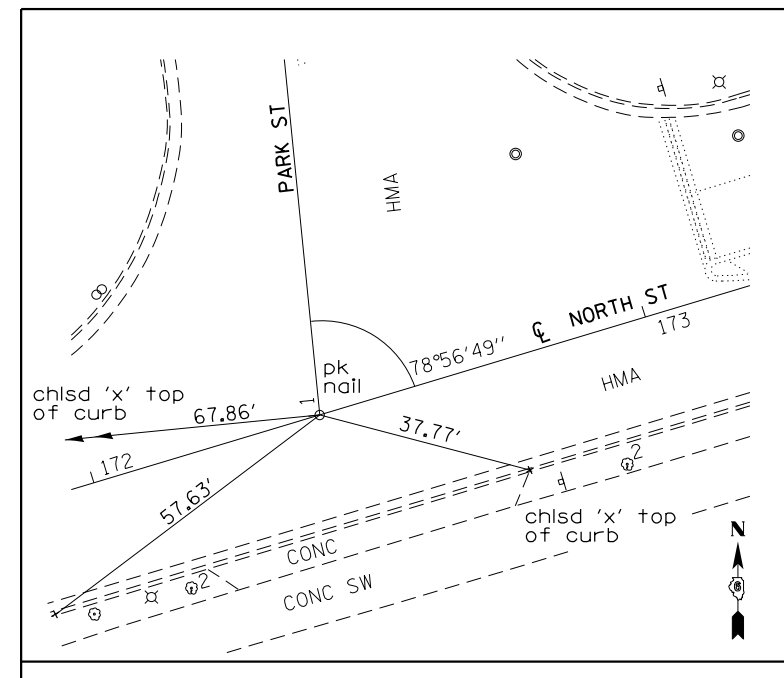
P.T. #203028 - 171+39.03
(PK NAIL @ EDGE OF PSM)



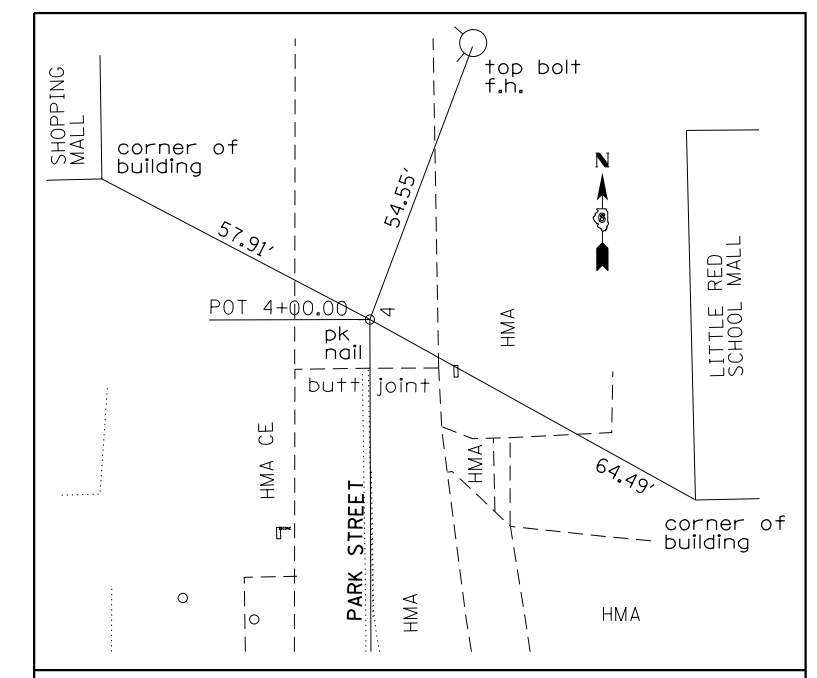
#203035
2+46.69 (PARK ST.) = 85+01.98 (WABASH AVE.)
(PK NAIL IN CHISELED 'X')



P.C. #203032 - 174+32.29
(PERMANENT SURVEY MARKER)



#203034
1+00.00 (PARK ST.) = 172+40.96 (NORTH ST.)
(PK NAIL IN CHISELED 'X')



#203037
P.O.T. 4+00.00 (PARK STREET)
(PK NAIL IN CHISELED 'X')

FILE NAME =	USER NAME = sparksgw	DESIGNED - RTS	REVISED -
c:\pw\work\p\dot\sparksgw\10296742\06729-shr-ATB.dgn		DRAWN - RTS	REVISED -
Default	PLOT SCALE = 100.0000' / 1"	CHECKED - RTS	REVISED -
	PLOT DATE = Nov-08-2013 12:07:45PM	DATE - 10-02-13	REVISED -

STATE OF ILLINOIS
DEPARTMENT OF TRANSPORTATION

ALIGNMENT CROSS TIES

SCALE: SHEET 1 OF 2 SHEETS STA. TO STA.

F.A.P. RTE.	SECTION	COUNTY	TOTAL SHEETS	SHEET NO.
664	.	SANGAMON	126	21
ILLINOIS FED. AID PROJECT			CONTRACT NO. 72F29	