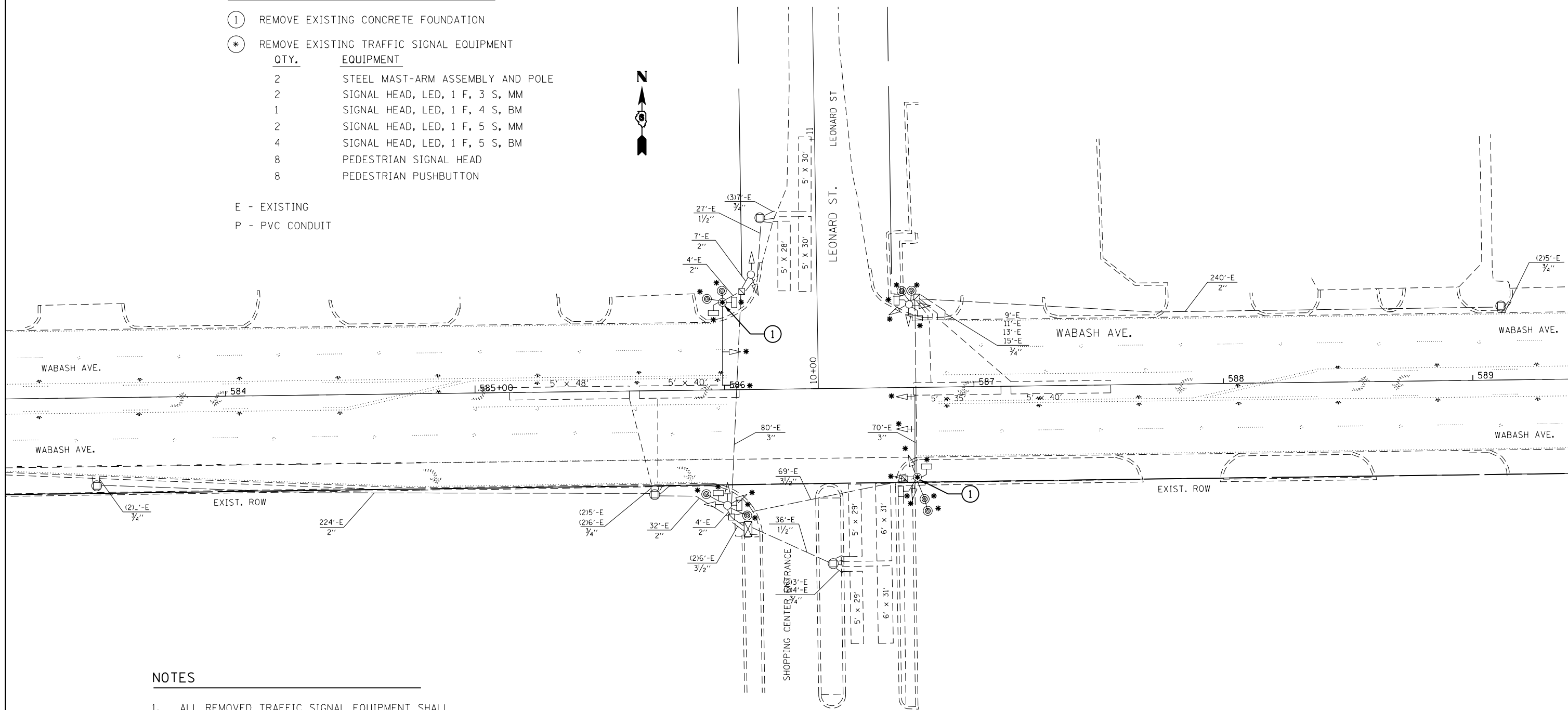


LEGEND

- ① REMOVE EXISTING CONCRETE FOUNDATION
 - * REMOVE EXISTING TRAFFIC SIGNAL EQUIPMENT
- | QTY. | EQUIPMENT |
|------|----------------------------------|
| 2 | STEEL MAST-ARM ASSEMBLY AND POLE |
| 2 | SIGNAL HEAD, LED, 1 F, 3 S, MM |
| 1 | SIGNAL HEAD, LED, 1 F, 4 S, BM |
| 2 | SIGNAL HEAD, LED, 1 F, 5 S, MM |
| 4 | SIGNAL HEAD, LED, 1 F, 5 S, BM |
| 8 | PEDESTRIAN SIGNAL HEAD |
| 8 | PEDESTRIAN PUSHBUTTON |

E - EXISTING
P - PVC CONDUIT



NOTES

- ALL REMOVED TRAFFIC SIGNAL EQUIPMENT SHALL BE DISPOSED OF BY THE CONTRACTOR. REMOVED EQUIPMENT BECOMES CONTRACTOR'S PROPERTY.

FILE NAME =	USER NAME = sparksgw	DESIGNED - DMS	REVISED -
ei:\pw\work\p\idot\sparksgw\10296742\06729\29-sht-trf-signal.dgn		DRAWN - DMS	REVISED -
Default	PLOT SCALE = 40.0000' / in.	CHECKED -	REVISED -
	PLOT DATE = Nov-08-2013 12:09:35PM	DATE -	REVISED -

**STATE OF ILLINOIS
DEPARTMENT OF TRANSPORTATION**

**EXISTING TRAFFIC SIGNAL PLAN SHEET
WABASH AVE. & LEONARD ST.**

SCALE: SHEET OF SHEETS STA. TO STA.

F.A.P. RTE.	SECTION	COUNTY	TOTAL SHEETS	SHEET NO.
664	.	SANGAMON	126	105
			CONTRACT NO.	72F29