

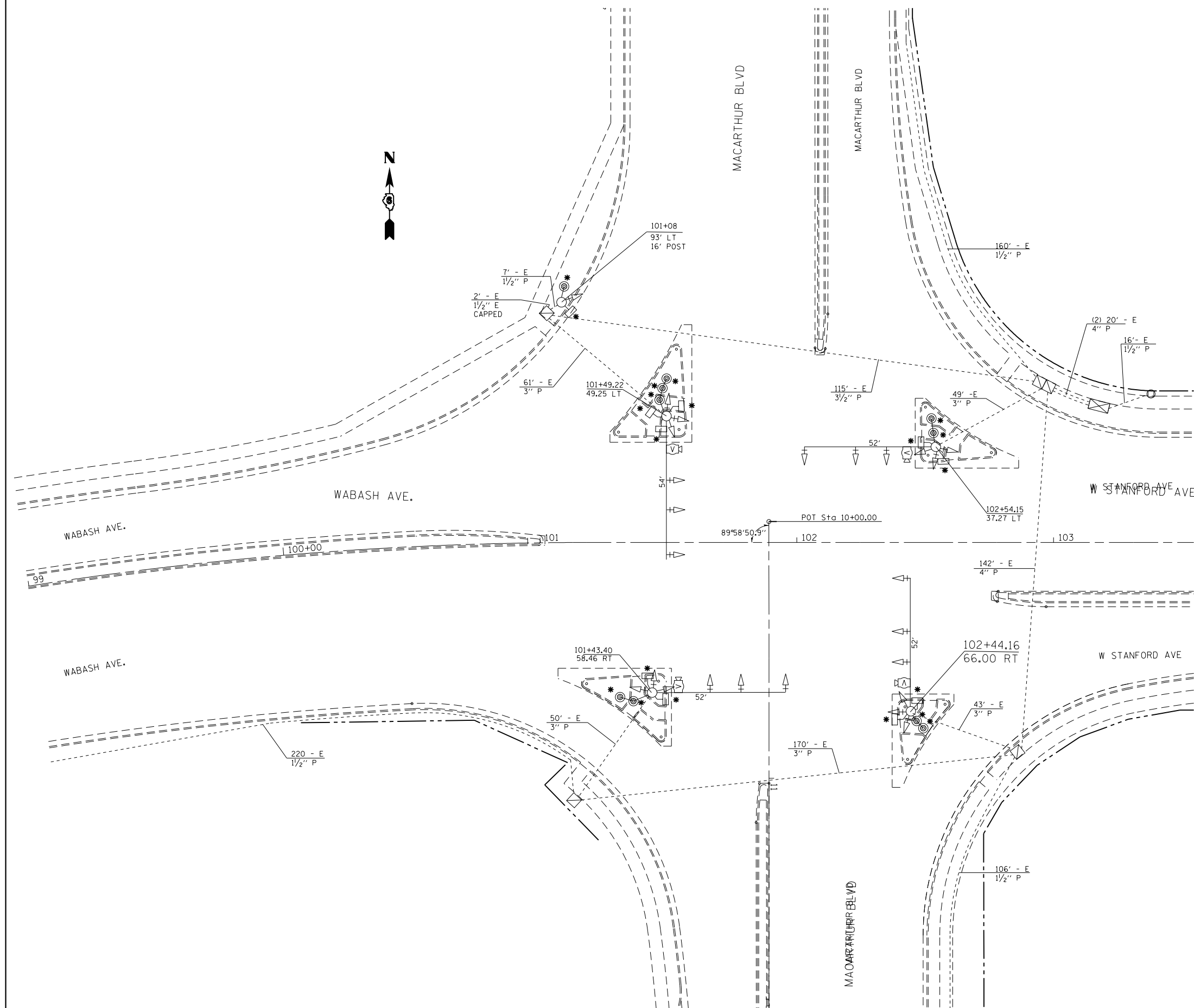


LEGEND

- (*) REMOVE EXISTING TRAFFIC SIGNAL EQUIPMENT

QTY.	EQUIPMENT
10	PEDESTRIAN SIGNAL HEAD
10	PEDESTRIAN PUSHBUTTON

E - EXISTING
P - PVC CONDUIT



NOTES

- ALL REMOVED TRAFFIC SIGNAL EQUIPMENT SHALL BE DISPOSED OF BY THE CONTRACTOR. REMOVED EQUIPMENT BECOMES CONTRACTOR'S PROPERTY.

FILE NAME =	USER NAME = sparksgw	DESIGNED - DMS	REVISED -
ci:\pw\work\p\dot\sparksgw\10296742\06729-sht-trf-signal.dgn		DRAWN - DMS	REVISED -
Default	PLOT SCALE = 40.0000' / in.	CHECKED -	REVISED -
	PLOT DATE = Nov-08-2013 12:09:39PM	DATE -	REVISED -

**STATE OF ILLINOIS
DEPARTMENT OF TRANSPORTATION**

**EXISTING TRAFFIC SIGNAL PLAN SHEET
WABASH AVE. & MACARTHUR BLVD**

SCALE: SHEET OF SHEETS STA. TO STA.

F.A.P. RTE.	SECTION	COUNTY	TOTAL SHEETS	SHEET NO.
664	.	SANGAMON	126	109
			CONTRACT NO.	72F29