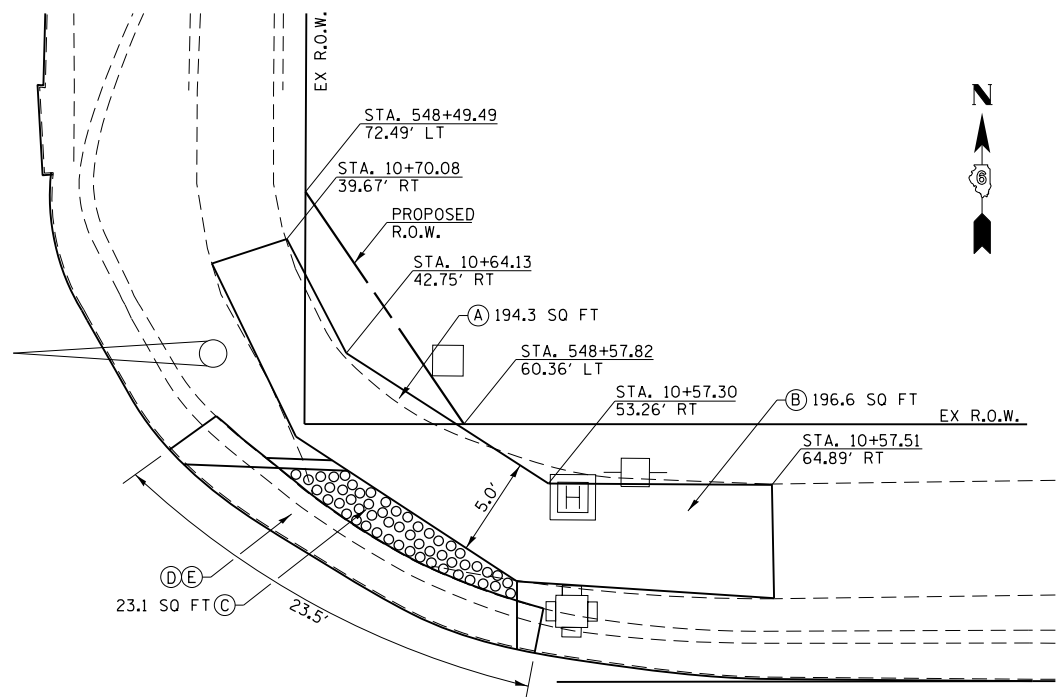


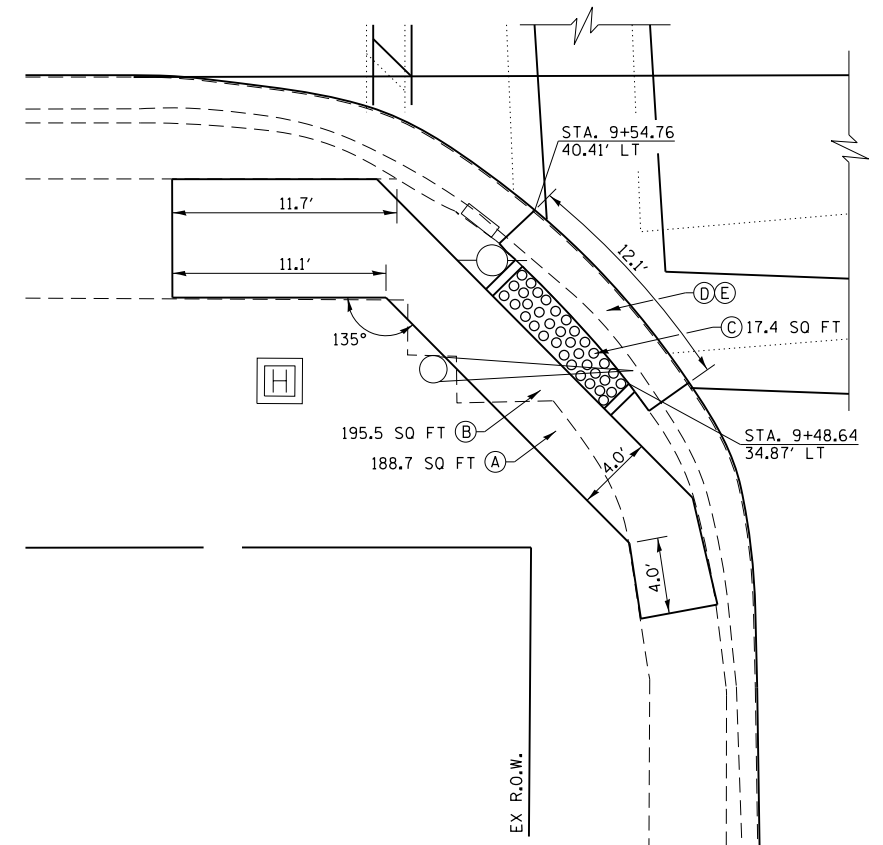
MONTVALE DRIVE



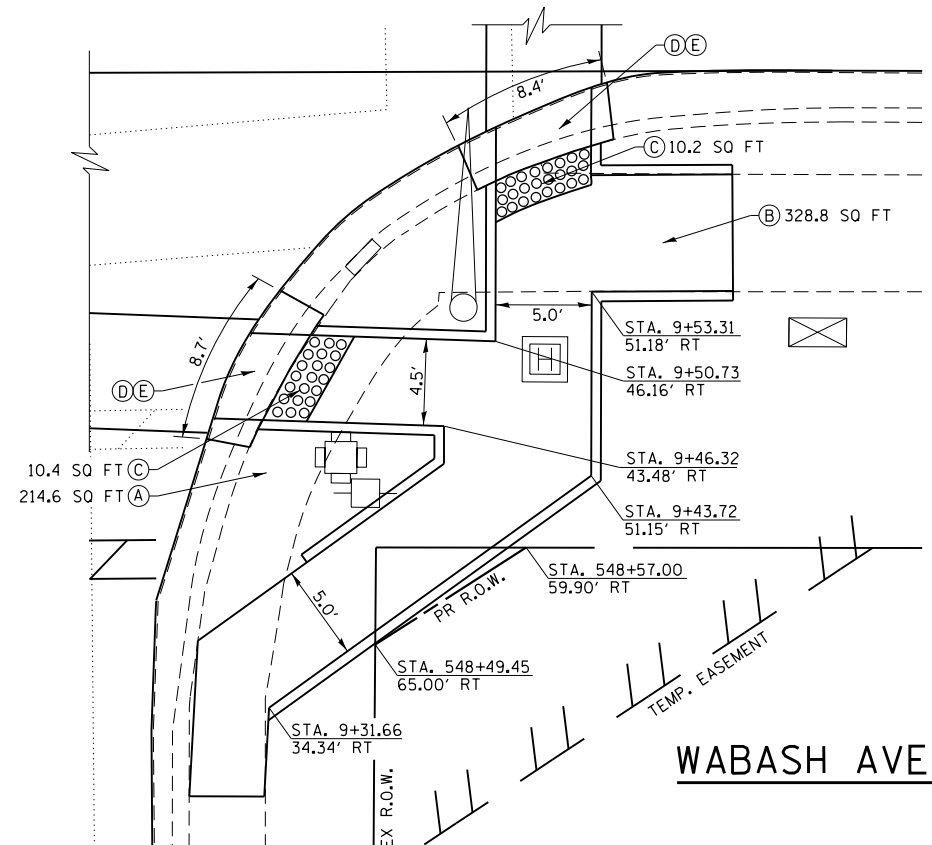
WABASH AVENUE



WABASH AVENUE



KIRKLEY LANE



WABASH AVE. & MONTVALE DR. / KIRKLEY LANE

LEGEND

- (A) PR SIDEWALK REMOVAL (SQ FT)
- (B) PR PCC SIDEWALK 4" (SQ FT)
- (C) PR DETECTABLE WARNING (SQ FT)
- (D) PR COMBINATION C&G REMOVAL (FT)
- (E) PR COMBINATION C&G TYPE B 6.24 (DEPRESSED)

NOTES:
 PROPOSED SAWCUTS ARE INCLUDED IN THE COSTS FOR PROPOSED SIDEWALK REMOVAL.
 PROPOSED SIDEWALK DIMENSIONS AND QUANTITIES SHOWN ON THIS SHEET ARE ONLY APPROXIMATIONS. THE ENGINEER SHALL VERIFY FINAL LOCATIONS OF SIDEWALK REMOVAL AND PLACEMENT OF PCC SIDEWALK (4") AND DETECTABLE WARNINGS. THE ENGINEER SHALL INSURE THAT FINAL SIDEWALK CONSTRUCTION IS IN COMPLIANCE WITH CHAPTER 6 OF THE AMERICAN DISABILITIES ACT AND THE APPROPRIATE HIGHWAY STANDARDS.

FILE NAME =	USER NAME = sparksgw	DESIGNED - RTS	REVISED -
et:\pw\work\p\id\sparksgw\10296742\06729-sht-details.dgn		DRAWN - RTS	REVISED -
Default	PLOT SCALE = 40.0000' / in.	CHECKED -	REVISED -
	PLOT DATE = Nov-08-2013 12:09:44PM	DATE -	REVISED -

STATE OF ILLINOIS
 DEPARTMENT OF TRANSPORTATION

PROPOSED SIDEWALK AND CURB RAMP DETAILS
 SCALE: SHEET 2 OF 5 SHEETS STA. TO STA.

F.A.P. RTE.	SECTION	COUNTY	TOTAL SHEETS	SHEET NO.
664	(G)RS-15, TS-9, (2)RS-9, TS-2	SANGAMON	126	114
CONTRACT NO. 72F29				
ILLINOIS FED. AID PROJECT				