

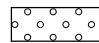



BENCHMARK

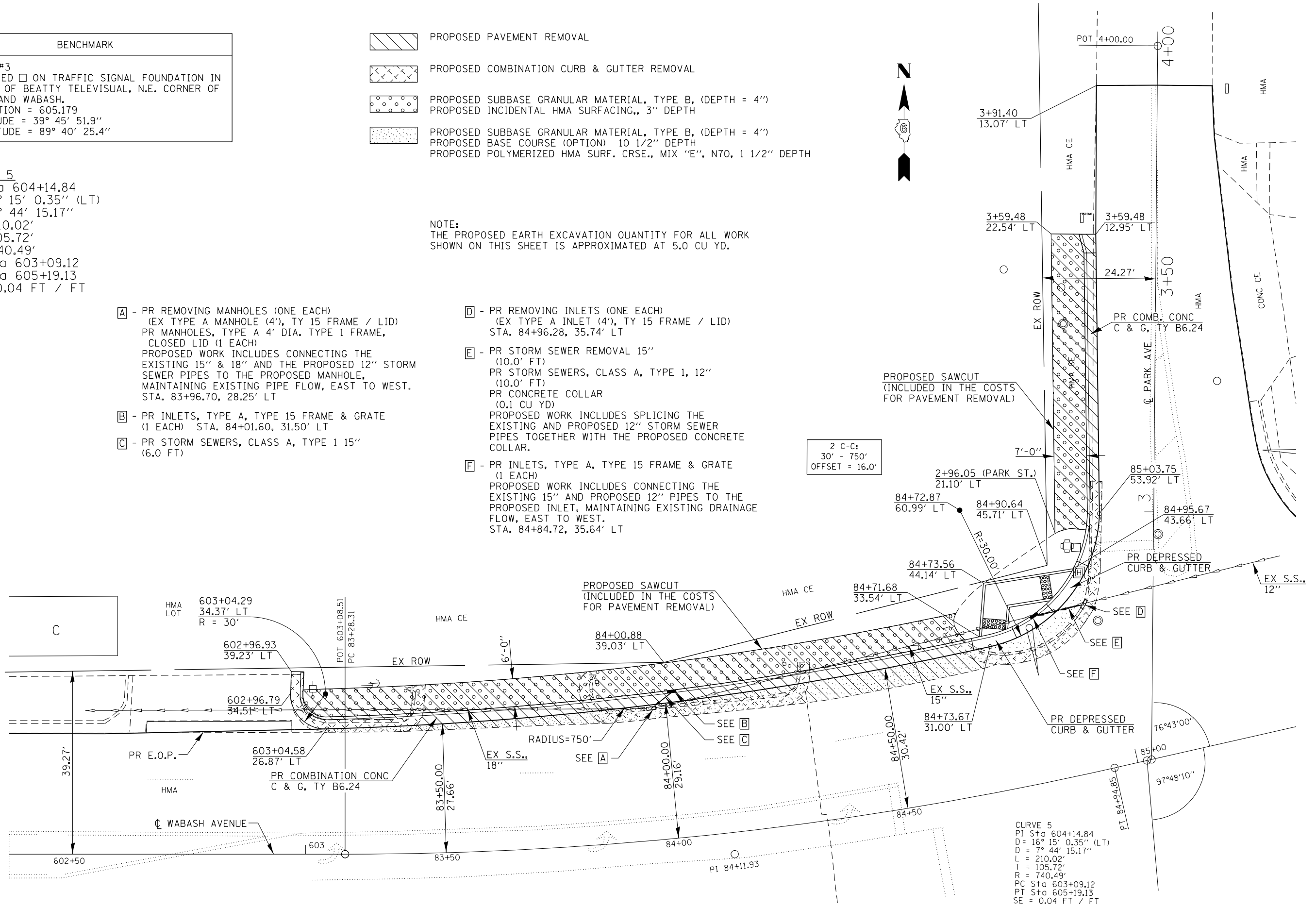
BM CB#3
 CHISELED □ ON TRAFFIC SIGNAL FOUNDATION IN FRONT OF BEATTY TELEVISUAL, N.E. CORNER OF PARK AND WABASH.
 ELEVATION = 605.179
 LATITUDE = 39° 45' 51.9"
 LONGITUDE = 89° 40' 25.4"

CURVE 5
 PI Sta 604+14.84
 D = 16° 15' 0.35" (LT)
 D = 7° 44' 15.17"
 L = 210.02'
 T = 105.72'
 R = 740.49'
 PC Sta 603+09.12
 PT Sta 605+19.13
 SE = 0.04 FT / FT

-  PROPOSED PAVEMENT REMOVAL
-  PROPOSED COMBINATION CURB & GUTTER REMOVAL
-  PROPOSED SUBBASE GRANULAR MATERIAL, TYPE B, (DEPTH = 4")
 PROPOSED INCIDENTAL HMA SURFACING,, 3" DEPTH
-  PROPOSED SUBBASE GRANULAR MATERIAL, TYPE B, (DEPTH = 4")
 PROPOSED BASE COURSE (OPTION) 10 1/2" DEPTH
 PROPOSED POLYMERIZED HMA SURF. CRSE., MIX "E", N70, 1 1/2" DEPTH

NOTE:
 THE PROPOSED EARTH EXCAVATION QUANTITY FOR ALL WORK SHOWN ON THIS SHEET IS APPROXIMATED AT 5.0 CU YD.

- A** - PR REMOVING MANHOLES (ONE EACH)
 (EX TYPE A MANHOLE (4'), TY 15 FRAME / LID)
 PR MANHOLES, TYPE A 4' DIA. TYPE 1 FRAME, CLOSED LID (1 EACH)
 PROPOSED WORK INCLUDES CONNECTING THE EXISTING 15" & 18" AND THE PROPOSED 12" STORM SEWER PIPES TO THE PROPOSED MANHOLE, MAINTAINING EXISTING PIPE FLOW, EAST TO WEST.
 STA. 83+96.70, 28.25' LT
- B** - PR INLETS, TYPE A, TYPE 15 FRAME & GRATE (1 EACH) STA. 84+01.60, 31.50' LT
- C** - PR STORM SEWERS, CLASS A, TYPE 1 15" (6.0 FT)
- D** - PR REMOVING INLETS (ONE EACH)
 (EX TYPE A INLET (4'), TY 15 FRAME / LID)
 STA. 84+96.28, 35.74' LT
- E** - PR STORM SEWER REMOVAL 15" (10.0' FT)
 PR STORM SEWERS, CLASS A, TYPE 1, 12" (10.0' FT)
 PR CONCRETE COLLAR (0.1 CU YD)
 PROPOSED WORK INCLUDES SPLICING THE EXISTING AND PROPOSED 12" STORM SEWER PIPES TOGETHER WITH THE PROPOSED CONCRETE COLLAR.
- F** - PR INLETS, TYPE A, TYPE 15 FRAME & GRATE (1 EACH)
 PROPOSED WORK INCLUDES CONNECTING THE EXISTING 15" AND PROPOSED 12" PIPES TO THE PROPOSED INLET, MAINTAINING EXISTING DRAINAGE FLOW, EAST TO WEST.
 STA. 84+84.72, 35.64' LT



CURVE 5
 PI Sta 604+14.84
 D = 16° 15' 0.35" (LT)
 D = 7° 44' 15.17"
 L = 210.02'
 T = 105.72'
 R = 740.49'
 PC Sta 603+09.12
 PT Sta 605+19.13
 SE = 0.04 FT / FT

FILE NAME =	USER NAME = sparksgw	DESIGNED - RTS	REVISED -	STATE OF ILLINOIS DEPARTMENT OF TRANSPORTATION	WABASH AVE./PARK STREET INTERSECTION IMPROVEMENT DETAILS	F.A.P. RTE.	SECTION	COUNTY	TOTAL SHEETS	SHEET NO.	
Default	PLOT SCALE = 40.0000' / in.	CHECKED -	REVISED -			664	(G)RS-15, TS-9, (2)IRS-9, TS-2	SANGAMON	126	120	
	PLOT DATE = Nov-08-2013 12:09:46PM	DATE - 10-05-2013	REVISED -			CONTRACT NO. 72F29					
						ILLINOIS FED. AID PROJECT					