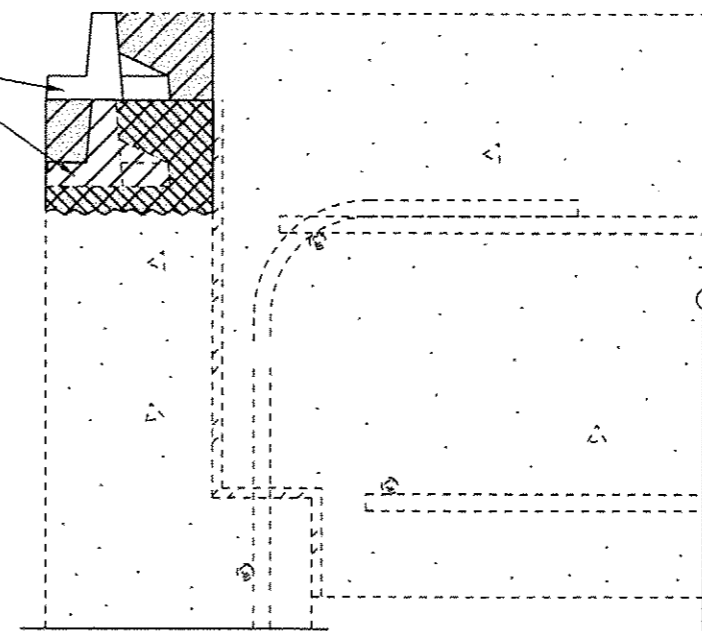




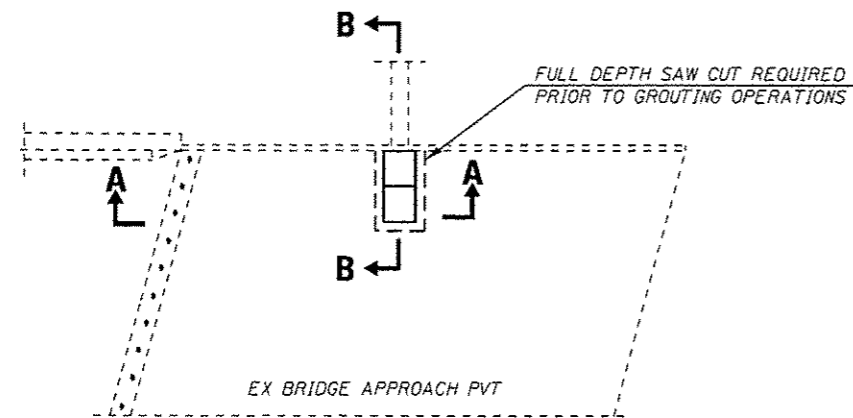
SECTION A-A

EXIST CASTING AND GRATE
TO BE REMOVED AND REINSTALLED

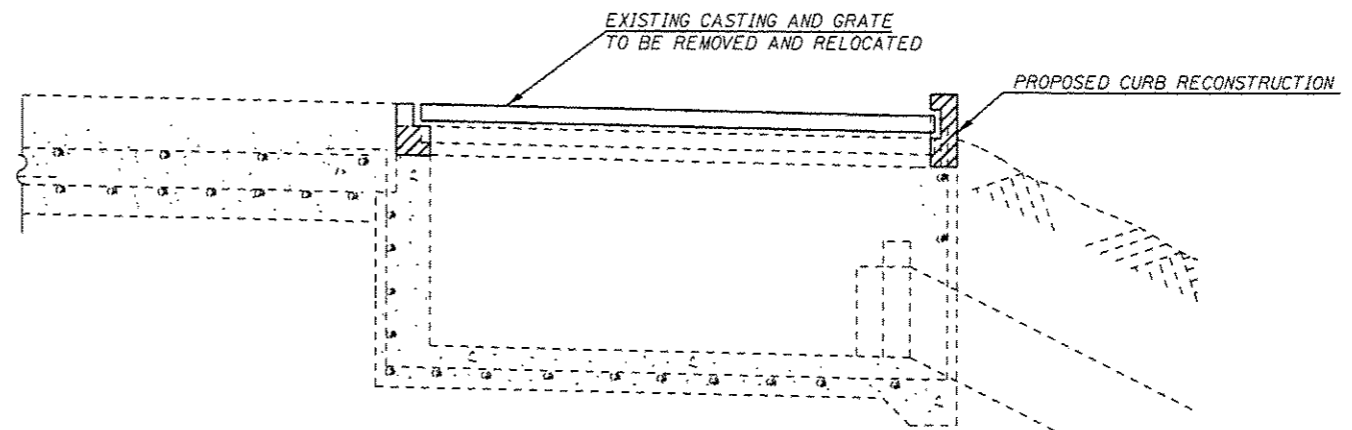


DETAIL A

-  - CONCRETE TO BE REMOVED AND REPLACED WITH POLYMER CONCRETE
-  - PROPOSED POLYMER CONCRETE POUR



TYPICAL DETAIL PLAN



SECTION B-B

INLET ADJUSTMENT DETAILS
FAP 612 (IL 103)
SECTION (101) I-2
SCHUYLER COUNTY