

STATE OF ILLINOIS  
DEPARTMENT OF TRANSPORTATION  
DIVISION OF HIGHWAYS

**PROPOSED  
HIGHWAY PLANS**

F.A.P. ROUTE 332 (IL-1)  
SECTION (103B)B-1  
PROJECT ACNHPP-0332 (118)  
BRIDGE REPLACEMENT  
WABASH COUNTY

C-97-008-07  
IL. 1 OVER GREATHOUSE CREEK

F.A.P. RTE.	SECTION	COUNTY	TOTAL SHEETS	SHEET NO.
332	(103B)B-1	WABASH	53	1
ILLINOIS			CONTRACT NO. 74220	

\* 53 + 3 = 56

D-97-007-07



FUNCTIONAL CLASSIFICATION:	OTHER PRINCIPAL ARTERIAL
DESIGN SPEED:	40 MPH
POSTED SPEED:	35 MPH
ADT:	4850 (2010)
PV:	91%
SU:	5%
MU:	4%

STATE OF ILLINOIS  
DEPARTMENT OF TRANSPORTATION  
DIVISION OF HIGHWAYS

SUBMITTED Oct. 17 20 13  
Roger L. Driskell  
DEPUTY DIRECTOR OF HIGHWAYS, REGION ENGINEER

Dec 6 20 13  
John D. Baranzelli, PE  
actg ENGINEER OF DESIGN AND ENVIRONMENT

Dec 6 20 13  
Omer Osman, PE  
DIRECTOR OF HIGHWAYS, CHIEF ENGINEER



Michael T. Matzke  
SIGNATURE  
DATE October 15, 2013

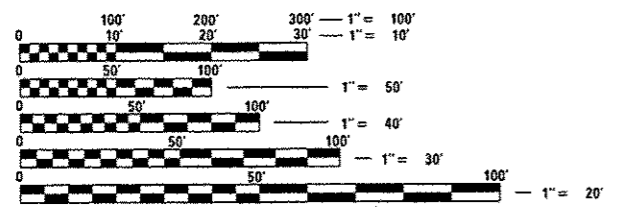
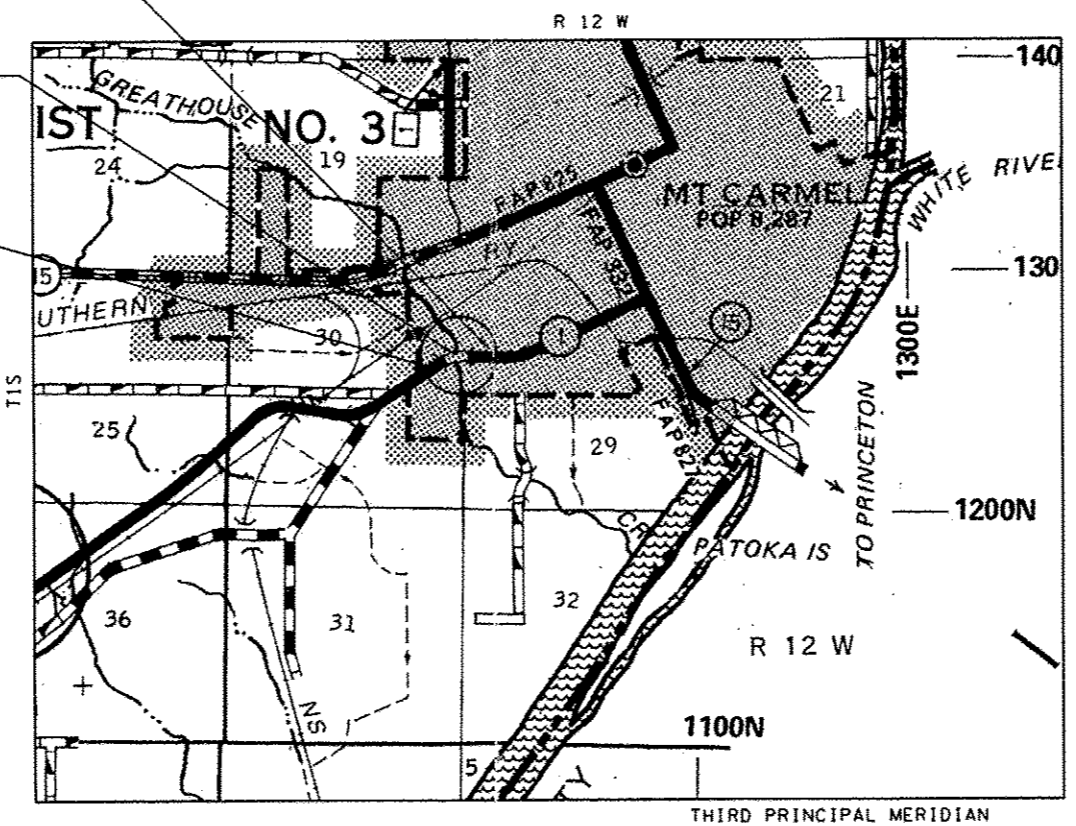
LIC. EXP. DATE: Nov. 30, 2015  
QUIGG ENGINEERING, INC.

SHEET NO.	INDEX OF SHEETS
1	COVER SHEET
2	GENERAL NOTES AND STANDARDS
3-4, 4A, 4B	SUMMARY OF QUANTITIES
5-9	TYPICAL SECTIONS
10-11, 11A	SCHEDULE OF QUANTITIES
12	ALIGNMENT TIES
13	PLAN & PROFILE SHEET
14	DRAINAGE PLAN
15	EROSION & SEDIMENT CONTROL PLAN
16-36	BRIDGE PLANS
37-40	EXISTING STRUCTURE PLANS
41-42	BOX CULVERT EXTENSION
43	PAVEMENT MARKING AND RAISED REFLECTIVE PAVEMENT MARKERS
44	ROAD CLOSURE DETAIL
45-46	DETAILS
47-53	CROSS-SECTIONS

IMPROVEMENT ENDS  
STA. 853+00.00

SECTION (103B)B-1  
PROPOSED S.N. 093-0026  
STATION 850+40.50  
BRIDGE STRUCTURE REPLACEMENT  
OVER GREATHOUSE CREEK

IMPROVEMENT BEGINS  
STA. 847+50.00



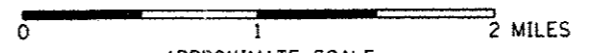
FULL SIZE PLANS HAVE BEEN PREPARED USING STANDARD ENGINEERING SCALES. REDUCED SIZED PLANS WILL NOT CONFORM TO STANDARD SCALES. IN MAKING MEASUREMENTS ON REDUCED PLANS, THE ABOVE SCALES MAY BE USED.

J.U.L.I.E.  
JOINT UTILITY LOCATION INFORMATION FOR EXCAVATION  
1-800-892-0123  
OR 811

PROJECT ENGINEER: TOM RONAN  
217-342-8320  
TOWNSHIP: MOUNT CARMEL  
CONTRACT NO. 74220

DESIGN DESIGNATION  
N.A.

LOCATION MAP



APPROXIMATE SCALE  
GROSS LENGTH = 550 FT. = 0.1042 MI.  
NET LENGTH = 550 FT. = 0.1042 MI.

PRINTED BY THE AUTHORITY  
OF THE STATE OF ILLINOIS