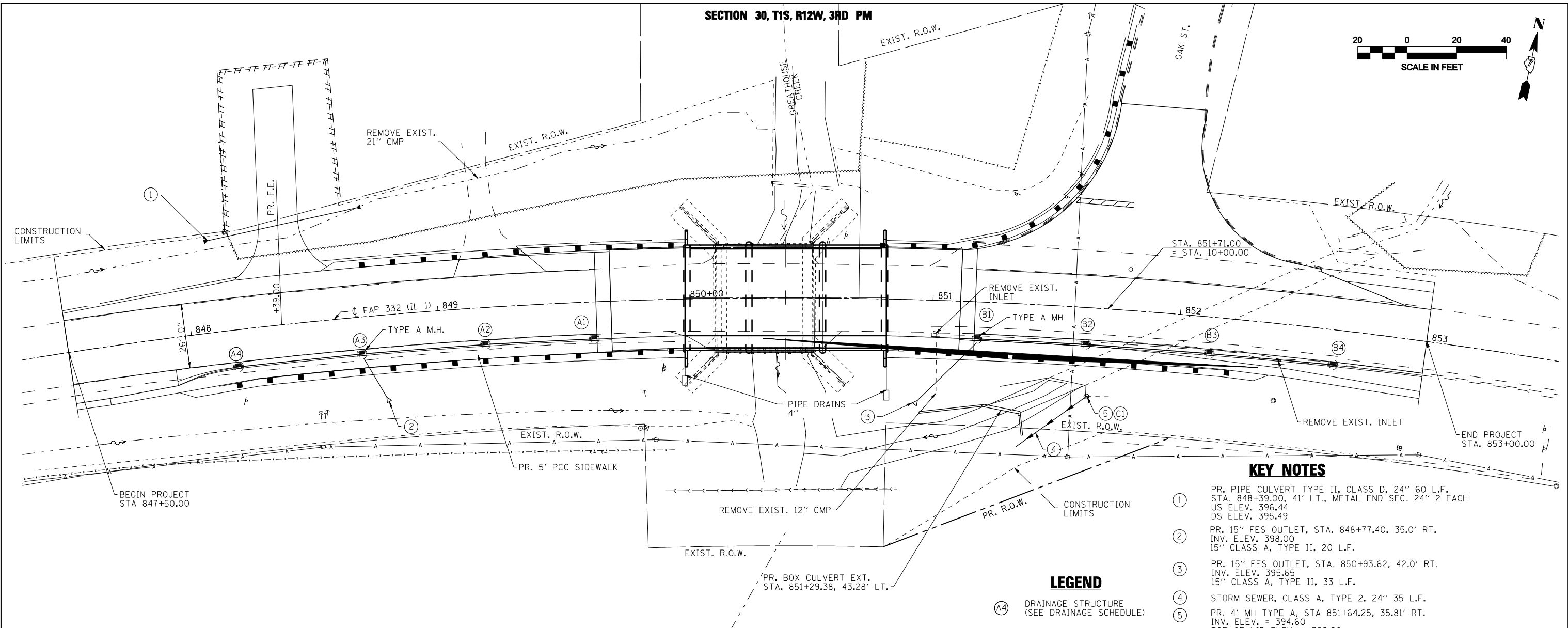
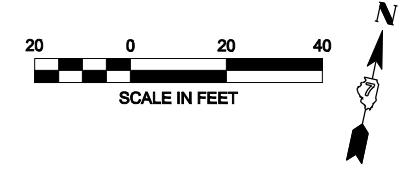




PLAN	REVISIONS	DATE
NO.	NO.	
NO.	NO.	
NO.	NO.	
NO.	NO.	
NO.	NO.	
NO.	NO.	
NO.	NO.	
NO.	NO.	
NO.	NO.	

PROFILE	REVISIONS	DATE
NO.	NO.	
NO.	NO.	
NO.	NO.	
NO.	NO.	
NO.	NO.	
NO.	NO.	
NO.	NO.	
NO.	NO.	
NO.	NO.	

SECTION 30, T1S, R12W, 3RD PM

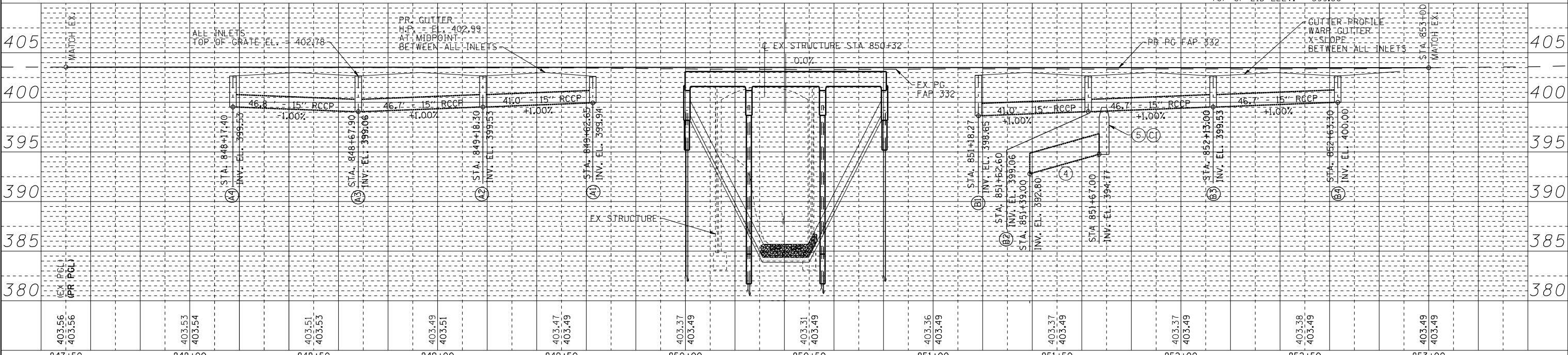


KEY NOTES

- ① PR. PIPE CULVERT TYPE II, CLASS D, 24" 60 L.F. STA. 848+39.00, 41' LT., METAL END SEC. 24" 2 EACH US ELEV. 396.44 DS ELEV. 395.49
- ② PR. 15" FES OUTLET, STA. 848+77.40, 35.0' RT. INV. ELEV. 398.00 15" CLASS A, TYPE II, 20 L.F.
- ③ PR. 15" FES OUTLET, STA. 850+93.62, 42.0' RT. INV. ELEV. 395.65 15" CLASS A, TYPE II, 33 L.F.
- ④ STORM SEWER, CLASS A, TYPE 2, 24" 35 L.F.
- ⑤ PR. 4" MH TYPE A, STA 851+64.25, 35.81' RT. INV. ELEV. = 394.60 TOP OF LID ELEV. = 399.80

LEGEND

④ DRAINAGE STRUCTURE (SEE DRAINAGE SCHEDULE)



FILE NAME = D774220-sh-drain.dgn	USER NAME = RJT	DESIGNED - MTM	REVISED -	STATE OF ILLINOIS DEPARTMENT OF TRANSPORTATION	DRAINAGE PLAN	F.A.P. RTE. = 332	SECTION = (103B)B-1	COUNTY = WABASH	TOTAL SHEETS = 53	SHEET NO. = 14	
PLOT SCALE = 40.0000' / IN.	CHECKED - MTM	REVISED -	SCALE: 1"=20'-0"			SHEET NO. 1 OF 1 SHEETS	STA. 848+00 TO STA. 853+50	FED. ROAD DIST. NO.	ILLINOIS FED. AID PROJECT	CONTRACT NO. 74220	
SCALE: (HORIZ) 1"=20' (VERT) 1"=5'	PLOT DATE = 12/15/2011	DATE = SEPTEMBER 2011	REVISED -								
	1:08:59 PM										