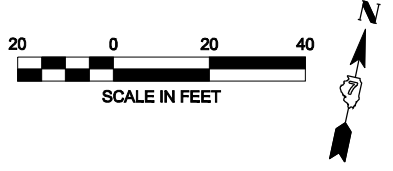
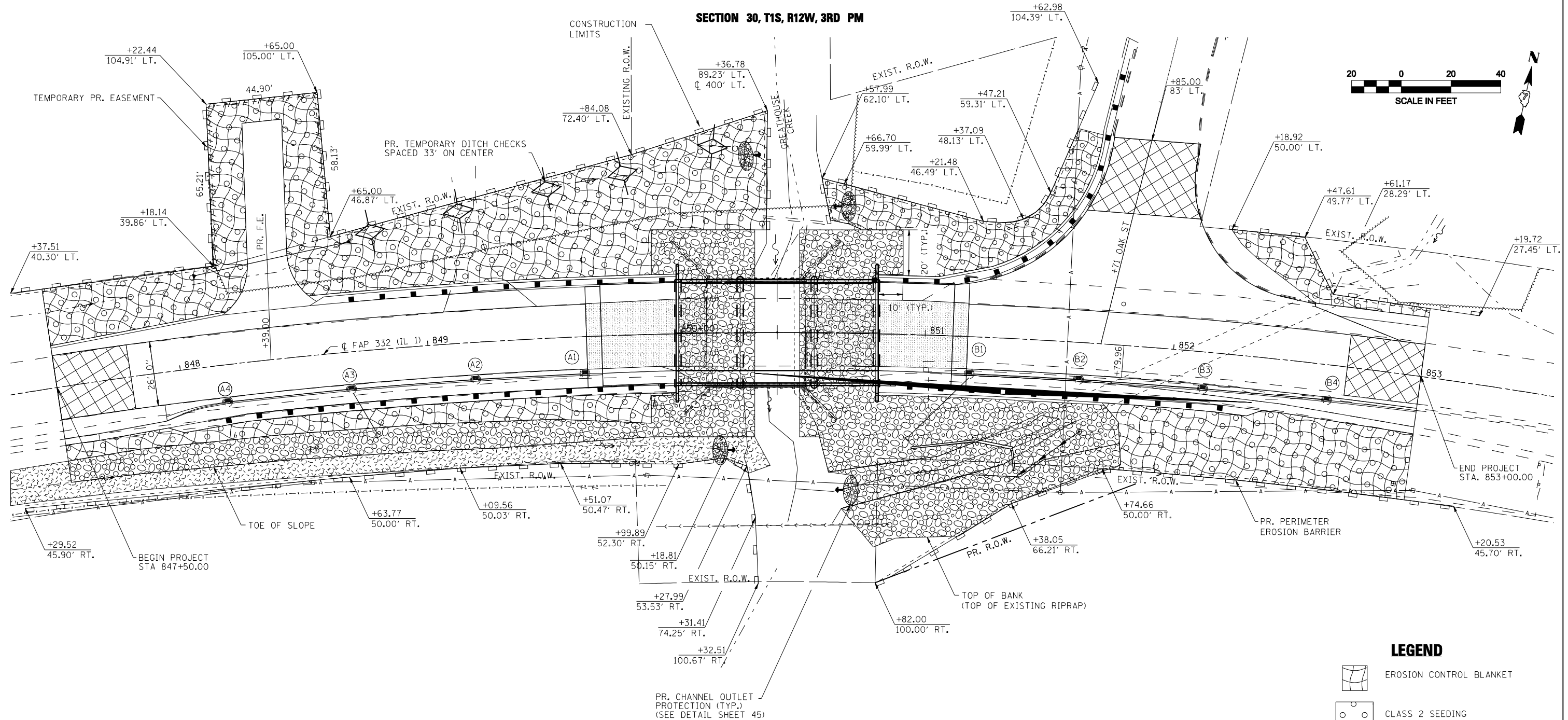
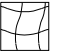


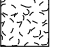


SECTION 30, T1S, R12W, 3RD PM



LEGEND

-  EROSION CONTROL BLANKET
-  CLASS 2 SEEDING
-  PROPOSED RIPRAP
-  EXISTING RIPRAP

FILE NAME = D774220-sht-eros.dgn	USER NAME = mmann	DESIGNED - MTM	REVISED -	STATE OF ILLINOIS DEPARTMENT OF TRANSPORTATION	EROSION AND SEDIMENT CONTROL PLAN			F.A. RTE. = 332	SECTION = (1038)8-1	COUNTY = WABASH	TOTAL SHEETS = 53	SHEET NO. = 15
	PLOT SCALE = 40.0000' / in.	CHECKED - MTM	REVISED -					SCALE: 1" = 20'	SHEET NO. 1 OF 1 SHEETS	STA. TO STA.	CONTRACT NO. 74220	
PLOT DATE = 4/5/2011	DATE = SEPTEMBER 2011	REVISED -	REVISED -		ILLINOIS FED. AID PROJECT							