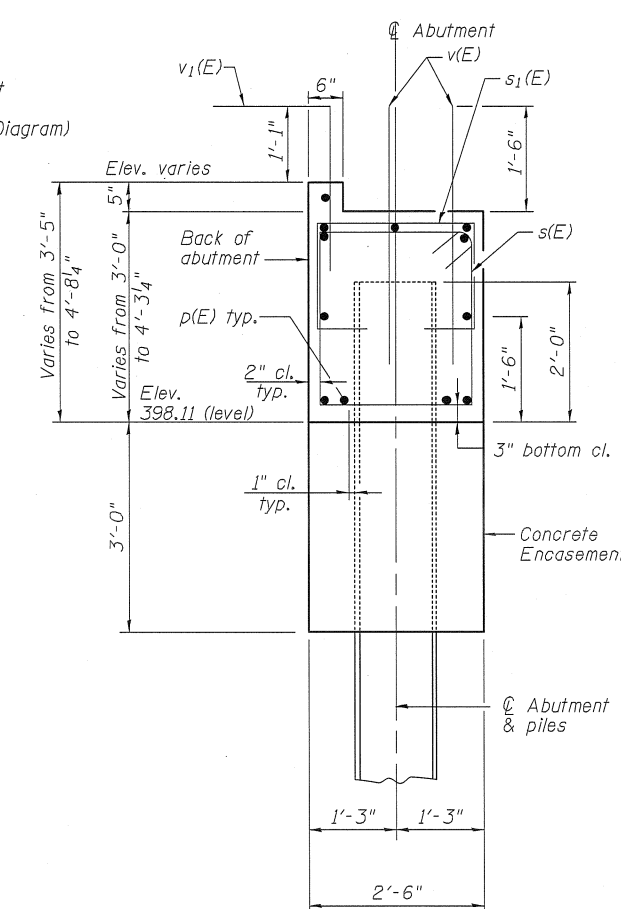
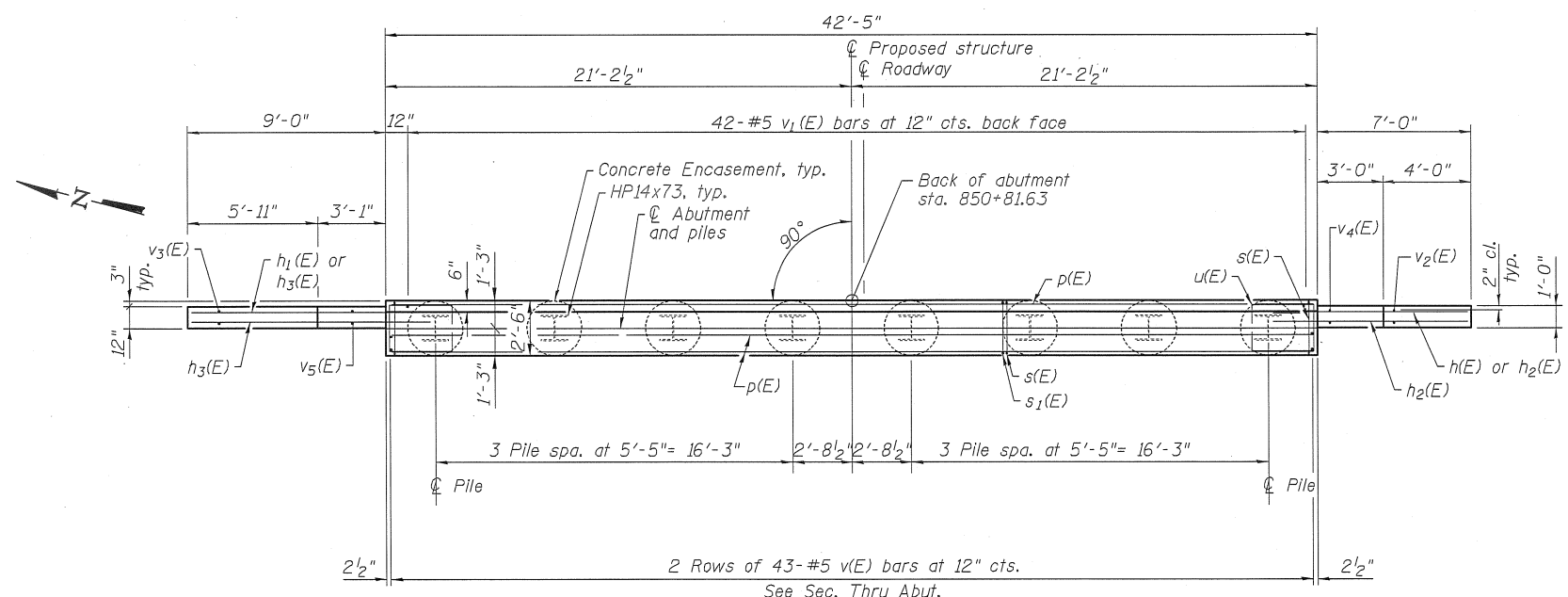


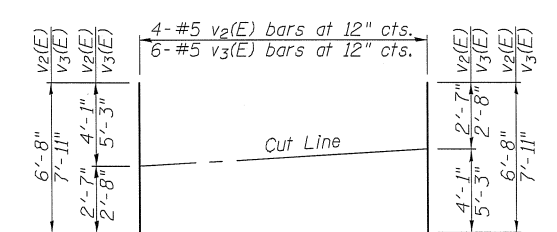
ELEVATION
(Looking East)



SECTION THRU EAST ABUTMENT



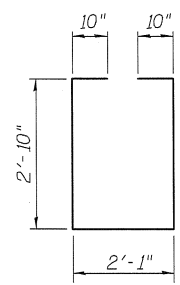
PLAN



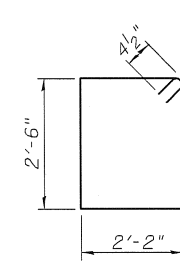
BARS v₂(E) & v₃(E)

FIELD CUTTING DIAGRAM

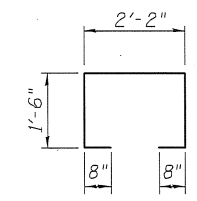
Order v₂(E) and v₃(E) full length.
Cut as shown and use remainder of bars in opposite face.



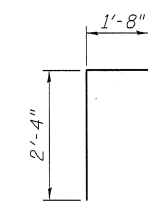
BAR u(E)



BAR s(E)



BAR s₁(E)



BAR v₁(E)

**EAST ABUTMENT
BILL OF MATERIAL**

Bar	No.	Size	Length	Shape
h(E)	5	#7	10'-6"	—
h ₁ (E)	5	#7	12'-6"	—
h ₂ (E)	11	#5	8'-10"	—
h ₃ (E)	13	#5	10'-10"	—
p(E)	12	#7	42'-1"	—
s(E)	39	#4	10'-1"	□
s ₁ (E)	27	#4	6'-6"	□
u(E)	10	#5	9'-5"	□
v(E)	86	#5	3'-8"	—
v ₁ (E)	42	#5	4'-0"	┌
v ₂ (E)	4	#5	6'-8"	—
v ₃ (E)	6	#5	7'-11"	—
v ₄ (E)	8	#5	4'-7"	—
v ₅ (E)	8	#5	5'-8"	—
Structure Excavation		Cu. Yd.	74	
Concrete Structures		Cu. Yd.	17.5	
Reinforcement Bars, Epoxy Coated		Pound	2670	
Furnishing Steel Piles, HP14x73		Foot	525	
Driving Piles		Foot	525	
Test Pile, Steel HP14x73		Each	1	
Concrete Encasement		Cu. Yd.	4.4	
Porous Granular Embankment, Special		Cu. Yd.	34	
Geocomposite Wall Drain		Sq. Yd.	25	
Pipe Underdrains for Structures, 4"		Foot	72	

For details of piles and Concrete Encasement, see Sheet 17 of 21.

PILE DATA

Type: Steel HP14x73
Nominal Required Bearing: 578 kips
Factored Resistance Available: 318 kips
Estimated Length: 75'
No. of Production Piles: 7
No. of Test Piles: 1