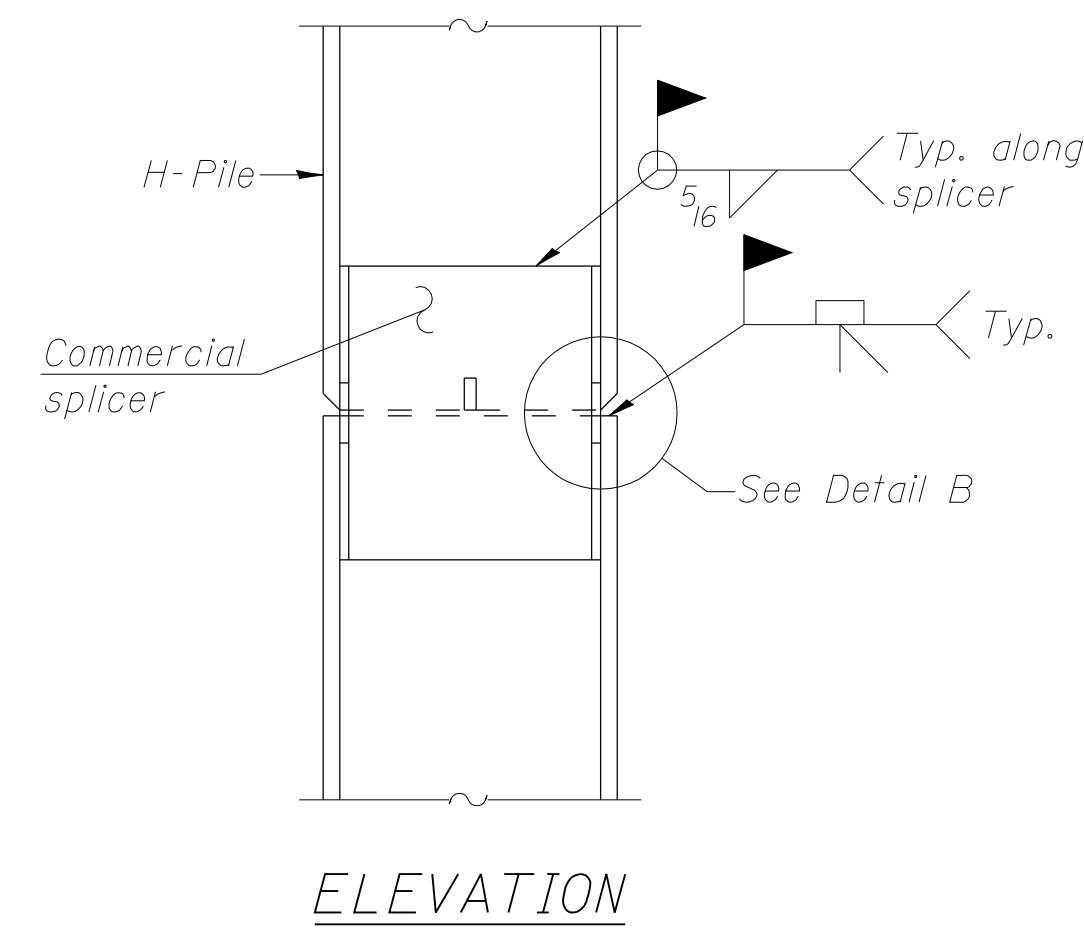
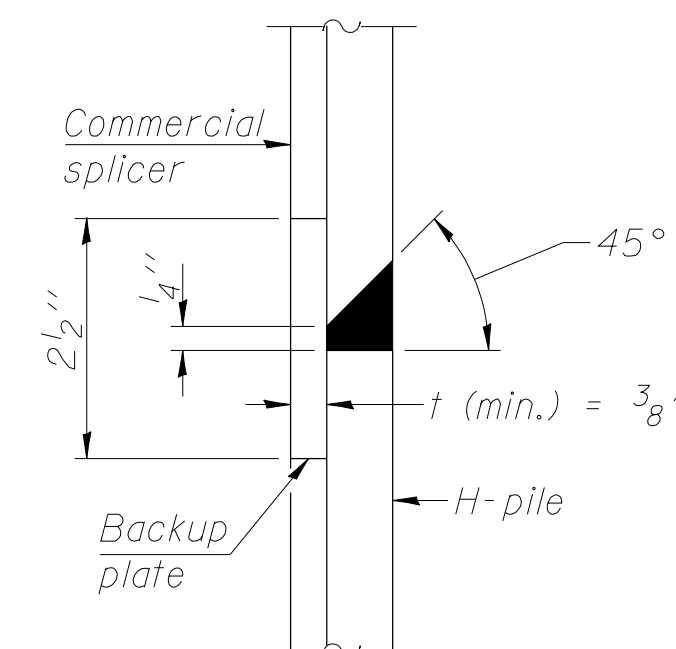


STEEL PILE TABLE

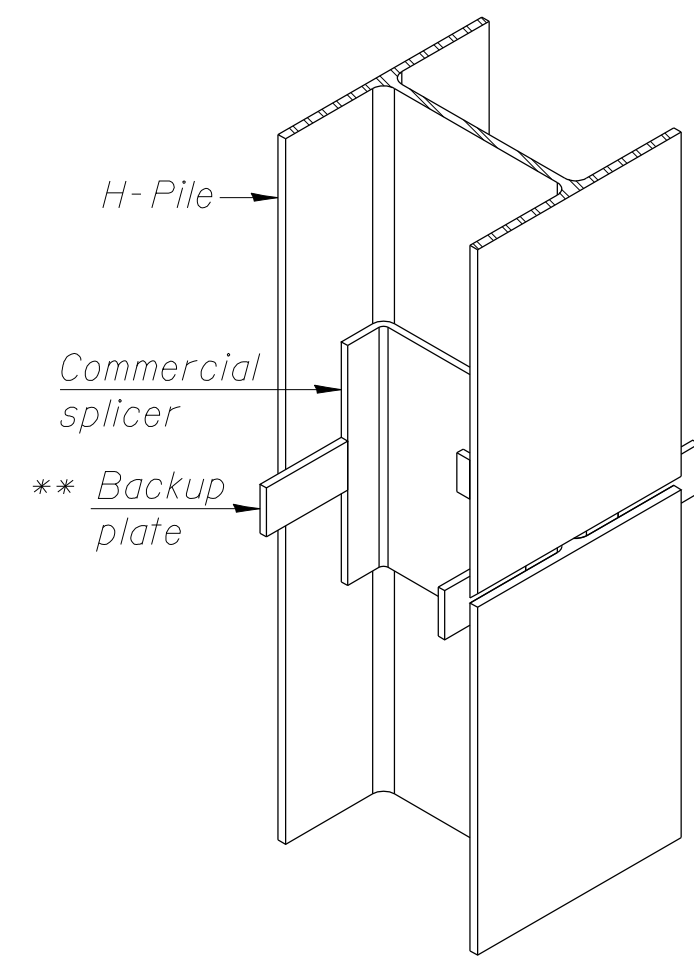
Designation	Depth d	Flange width b _f	Web and Flange thickness t	Encasement diameter A
HP 14x117	14 ¹ / ₄ "	14 ⁷ / ₈ "	1 ³ / ₁₆ "	30"
x102	14"	14 ³ / ₄ "	1 ¹ / ₁₆ "	30"
x89	13 ⁷ / ₈ "	14 ³ / ₄ "	5 ⁵ / ₈ "	30"
x73	13 ⁵ / ₈ "	14 ⁵ / ₈ "	1 ¹ / ₂ "	30"
HP 12x84	12 ¹ / ₄ "	12 ¹ / ₄ "	1 ¹ / ₁₆ "	24"
x74	12 ¹ / ₈ "	12 ¹ / ₄ "	5 ⁵ / ₈ "	24"
x63	12"	12 ¹ / ₈ "	1 ¹ / ₂ "	24"
x53	11 ³ / ₄ "	12"	7 ¹ / ₁₆ "	24"
HP 10x57	10"	10 ¹ / ₄ "	9 ⁹ / ₁₆ "	24"
x42	9 ³ / ₄ "	10 ¹ / ₈ "	7 ¹ / ₁₆ "	24"
HP 8x36	8"	8 ¹ / ₈ "	7 ¹ / ₁₆ "	18"



ELEVATION

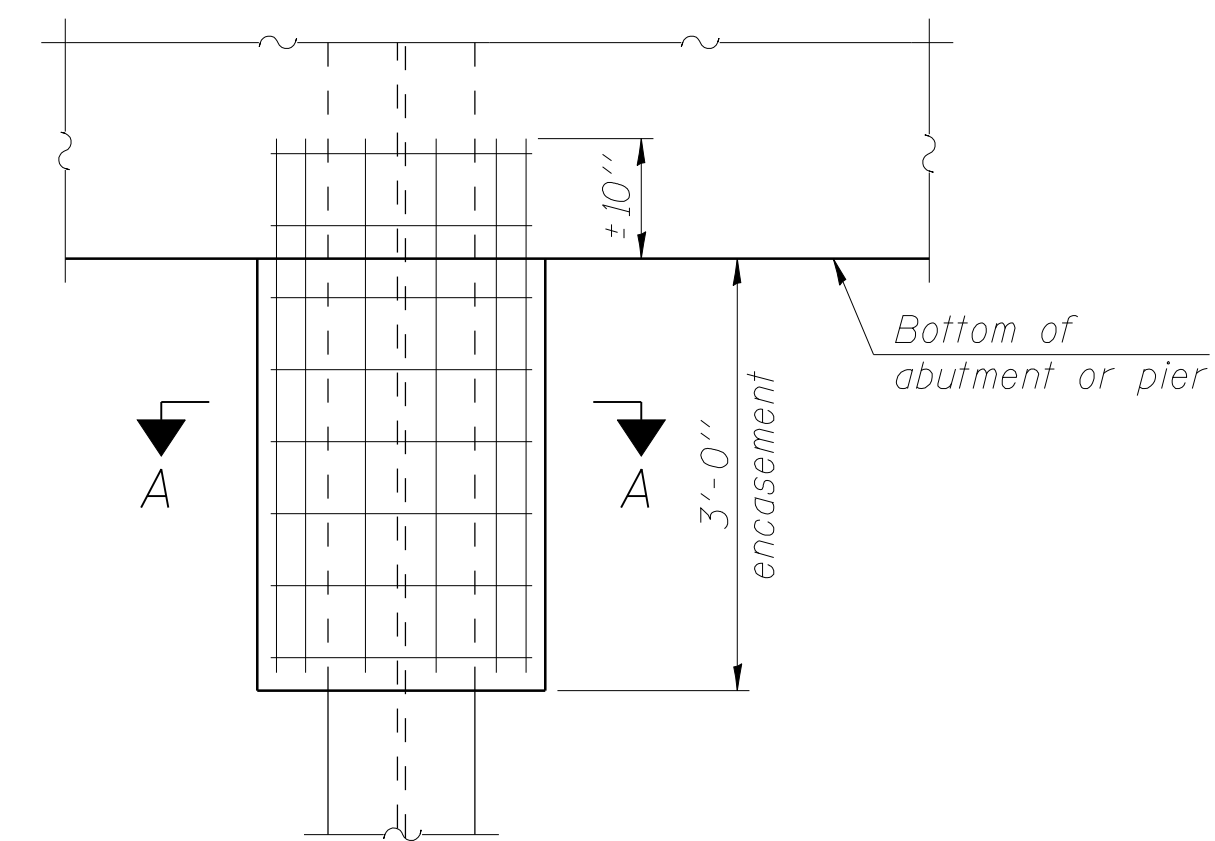


DETAIL "B"



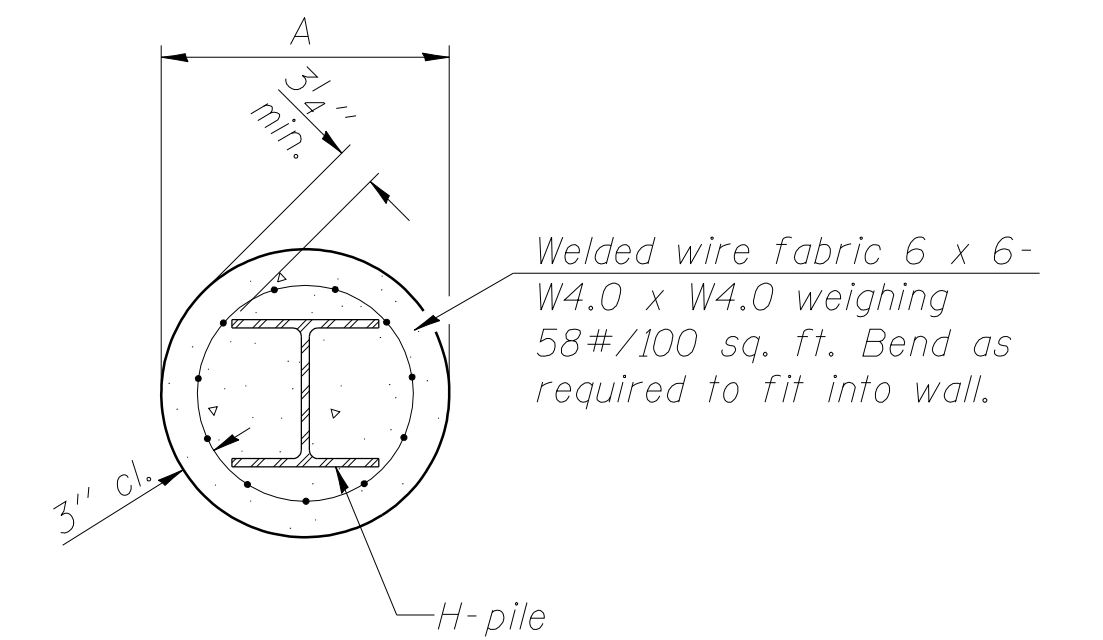
ISOMETRIC VIEW

WELDED COMMERCIAL SPLICE



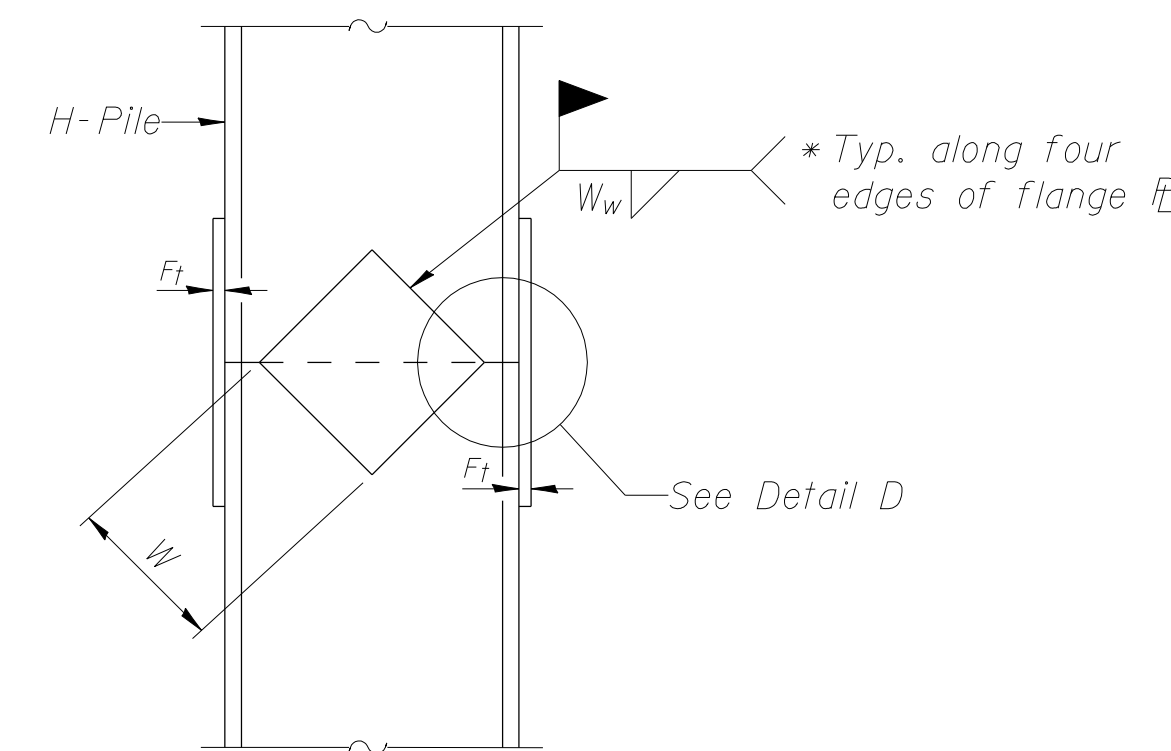
ELEVATION

PILE ENCASEMENT



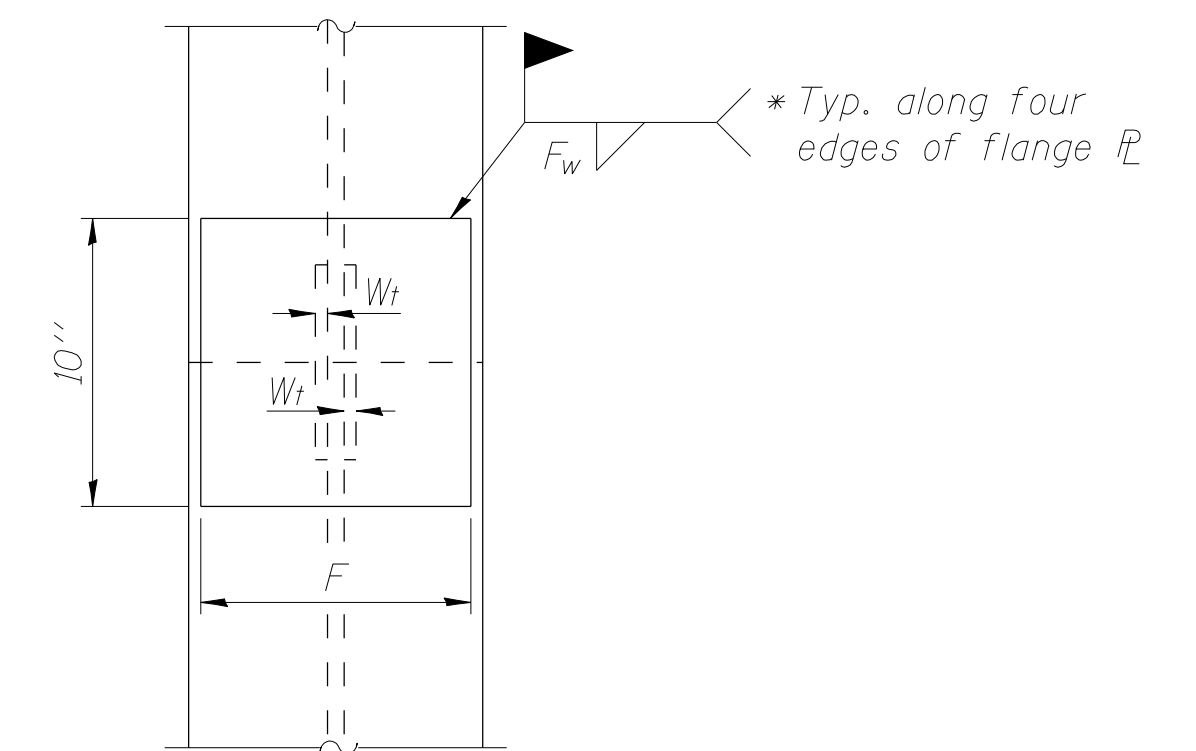
SECTION A-A

Note:
Forms for encasement may be omitted when soil conditions permit.



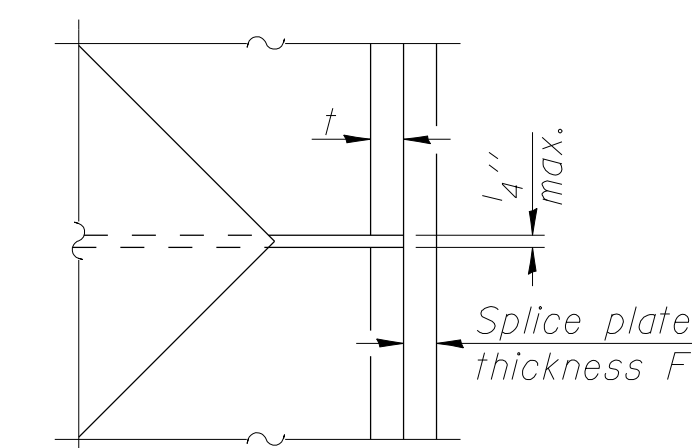
ELEVATION

WELDED PLATE FIELD SPLICE

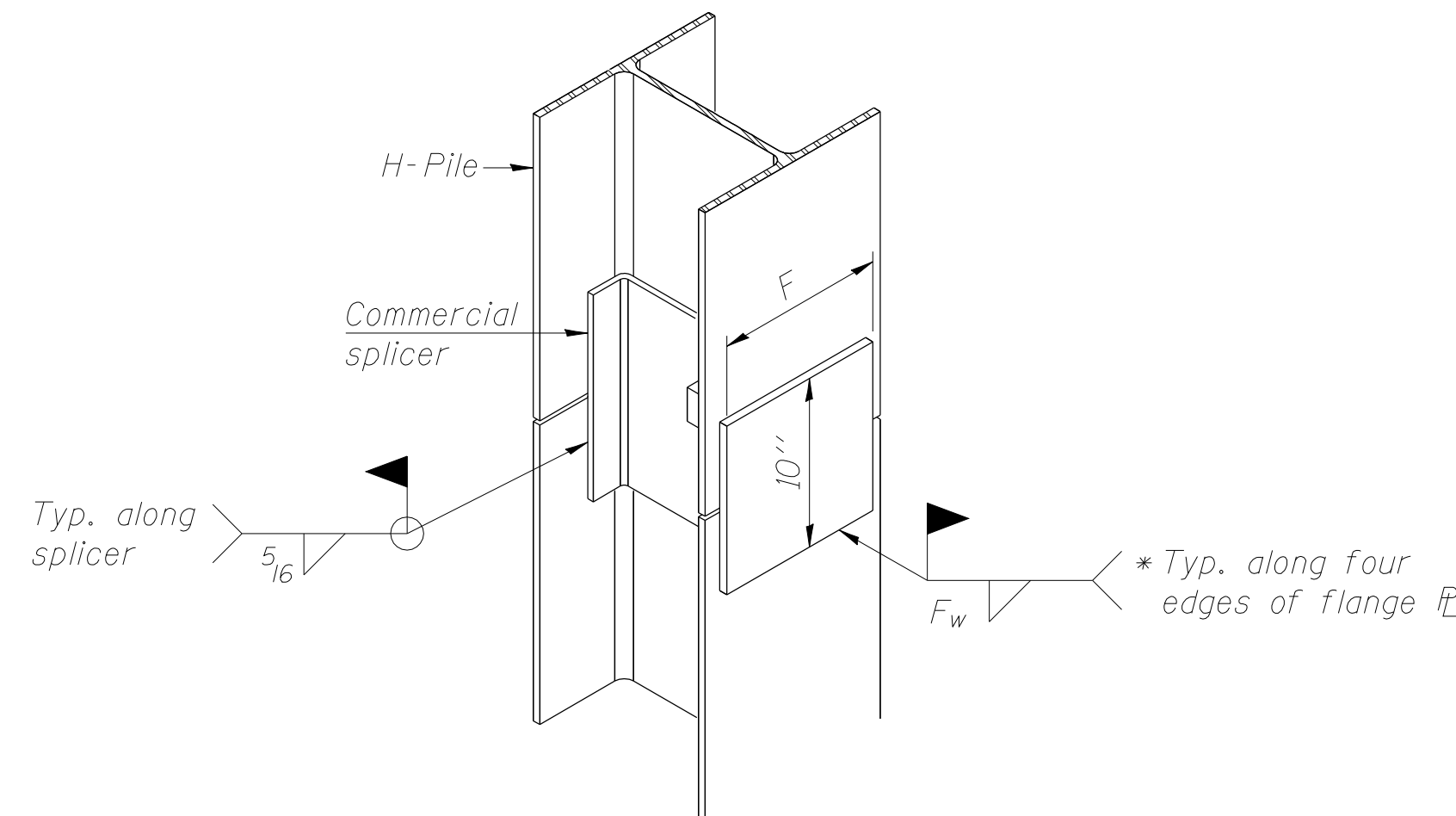


END VIEW

Designation	F	F _t	F _w	W	W _t	W _w
HP 14x117	12 ¹ / ₂ "	1"	7 ⁸ / ₈ "	7 ³ / ₄ "	5 ⁸ / ₈ "	1 ¹ / ₂ "
x102	12 ¹ / ₂ "	7 ⁸ / ₈ "	3 ⁴ / ₄ "	7 ³ / ₄ "	5 ⁸ / ₈ "	1 ¹ / ₂ "
x89	12 ¹ / ₂ "	3 ⁴ / ₄ "	1 ¹ / ₁₆ "	7 ³ / ₄ "	5 ⁸ / ₈ "	1 ¹ / ₂ "
x73	12 ¹ / ₂ "	5 ⁸ / ₈ "	9 ⁹ / ₁₆ "	7 ³ / ₄ "	5 ⁸ / ₈ "	1 ¹ / ₂ "
HP 12x84	10"	7 ⁸ / ₈ "	1 ¹ / ₁₆ "	6 ¹ / ₂ "	5 ⁸ / ₈ "	1 ¹ / ₂ "
x74	10"	7 ⁸ / ₈ "	1 ¹ / ₁₆ "	6 ¹ / ₂ "	5 ⁸ / ₈ "	1 ¹ / ₂ "
x63	10"	5 ⁸ / ₈ "	1 ¹ / ₂ "	6 ¹ / ₂ "	1 ¹ / ₂ "	3 ⁸ / ₈ "
x53	10"	5 ⁸ / ₈ "	1 ¹ / ₂ "	6 ¹ / ₂ "	1 ¹ / ₂ "	3 ⁸ / ₈ "
HP 10x57	8"	3 ⁴ / ₄ "	9 ⁹ / ₁₆ "	5 ¹ / ₄ "	1 ¹ / ₂ "	3 ⁸ / ₈ "
x42	8"	5 ⁸ / ₈ "	9 ⁹ / ₁₆ "	5 ¹ / ₄ "	1 ¹ / ₂ "	3 ⁸ / ₈ "
HP 8x36	7"	5 ⁸ / ₈ "	7 ¹ / ₁₆ "	4 ¹ / ₄ "	1 ¹ / ₂ "	3 ⁸ / ₈ "



DETAIL D

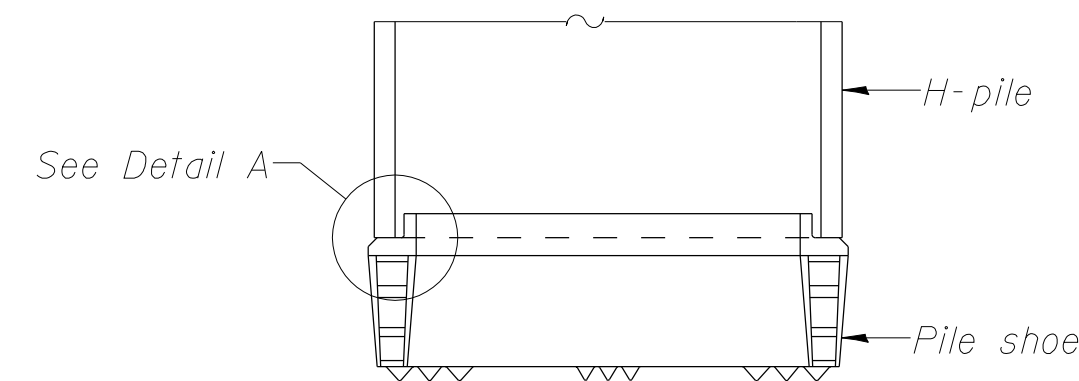


ISOMETRIC VIEW

WELDED COMMERCIAL SPLICE ALTERNATE

- * Interrupt welds 1/4" from end of web and/or each flange.
- ** Remove portions of backup plates that extend outside the flanges.
- *** Weld size per pile shoe manufacturer (5/16" min.).

Note:
The steel H-piles shall be according to AASHTO M270 Grade 50.



ELEVATION

DETAIL A

H-PILE SHOE ATTACHMENT

F-HP 7-1-10

FILE NAME	USER NAME	DESIGNED	REVISIONS
0930026-74220-17-HPD.tldgn	RJT	ELH 09/10	-
	ESCA JOB NO. 933.12	MJW/RDP 09/10	-
	PLOT SCALE = 0:1' = 1/4" IN.	DWH/KAH 08/11	-
	PLOT DATE = 12/15/2011 1:39:31 PM	ELH 08/11	-

**STATE OF ILLINOIS
DEPARTMENT OF TRANSPORTATION**

**HP PILE DETAILS
STRUCTURE NO. 093-0026**

SHEET NO. 17 OF 21 SHEETS

F.A.P. RTE.	SECTION	COUNTY	TOTAL SHEETS	SHEET NO.
332	(103B)B-1	WABASH	53	32
				CONTRACT NO. 74220
ILLINOIS FED. AID PROJECT				