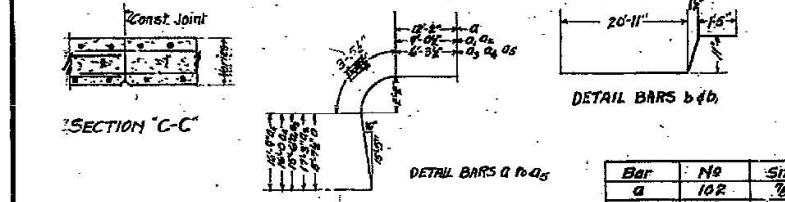
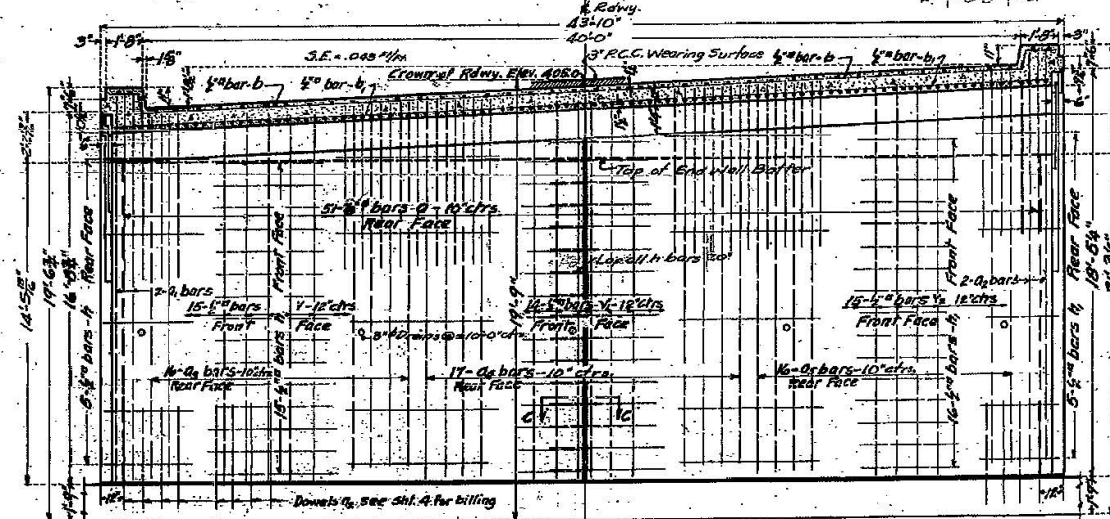
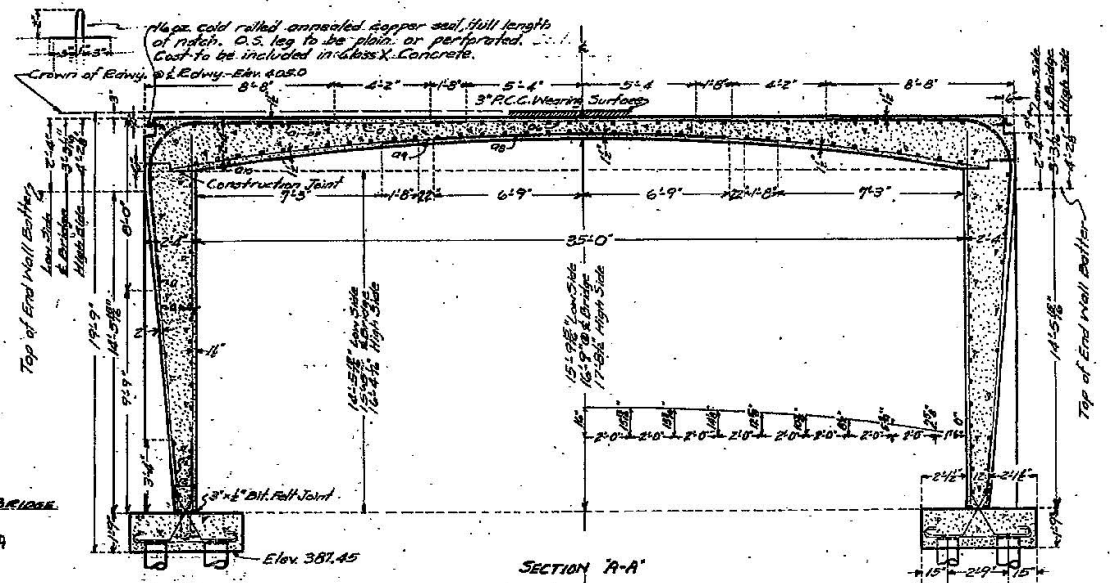
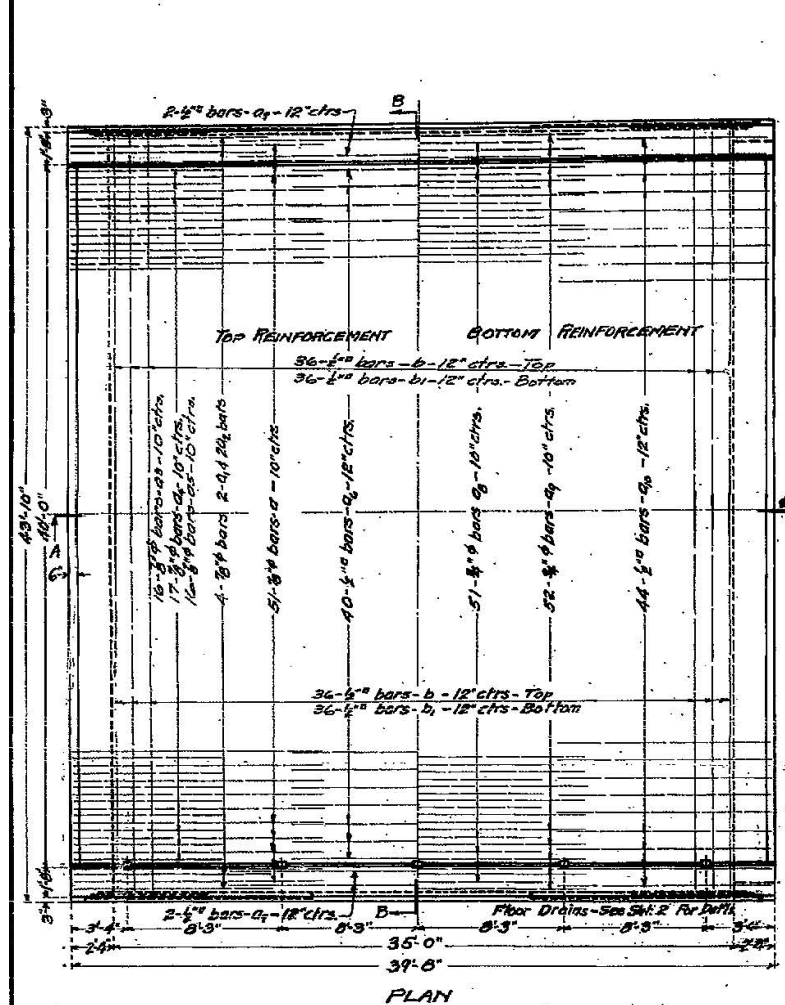


B.M. - Mark 'X' on Top of S.W. Corner of west Headwall  
 Lt. Sta. 850+75. Elev. 402.24  
 Existing Structure - P.C. Slab, Span 28' on g. Rdwy. 24' to  
 be removed by Contractor for Sect. 103-B.

STATE OF ILLINOIS  
 DEPARTMENT OF PUBLIC WORKS & BUILDINGS  
 DIVISION OF HIGHWAYS

PROJECT NO.	SEC.	COUNTY	TOTAL SHEETS	SHEET NO.
198	103B	Wabash	6	5
SHEETS				



**BILL OF MATERIAL**

Bar	No	Size	Length
a	102	6"	21'3"
b	72	6"	23'5"
c	4	6"	26'0"
d	4	6"	29'9"
e	32	6"	25'3"
f	34	6"	25'9"
g	32	6"	26'6"
h	40	6"	19'0"
i	4	6"	20'0"
j	51	6"	19'5"
k	52	6"	20'0"
l	88	6"	10'0"

Bar	No	Size	Length
m	72	6"	23'5"
n	30	6"	16'9"
o	20	6"	17'5"
p	30	6"	17'9"
q	40	6"	21'9"
r	42	6"	28'6"

Class "X" Concrete Cu Yds 187.5  
 Reinforcing Steel Lbs. 17,680

STANDARD  
 DESIGNED - J.N. Du Vernet  
 CHECKED - J.N. Du Vernet  
 DRAWN - S.B. - J.N. Du Vernet  
 CHECKED - J.N. Du Vernet, S.B.

SPECIAL  
 ASSEMBLED  
 CHECKED

EXAMINED - 12.24.1928  
 P. F. Burch  
 APPROVED - E. Sieberman

Notes:  
 Class "X" Concrete to be used throughout.  
 Reinforcing steel shall be wired securely  
 in place before concrete is poured.

S.B.I. ROUTE 198 SECTION 103-B  
 WABASH COUNTY  
 STA. 850+32