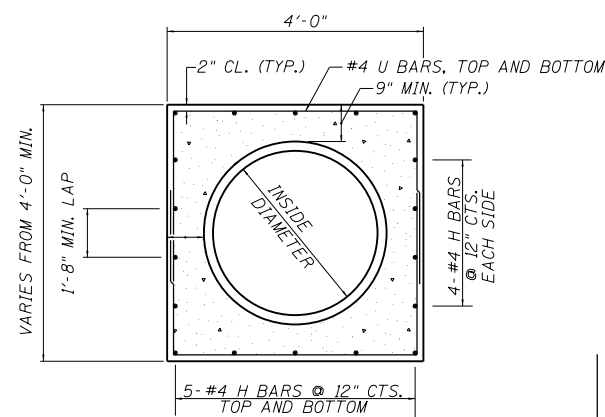


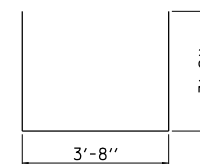
HOT-MIX ASPHALT SURFACE REMOVAL (VARIABLE DEPTH) DETAIL

NOTES:

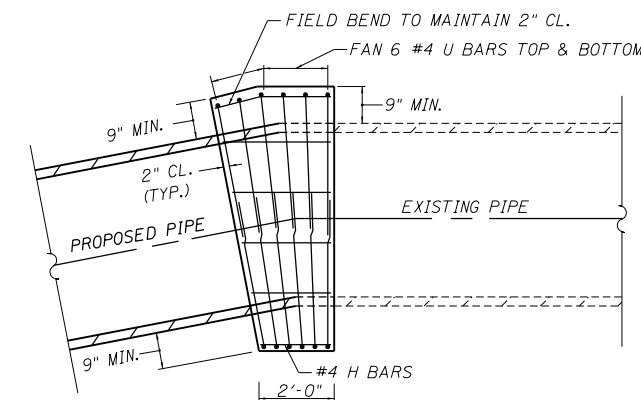
1. MILLING SHALL BE DONE TO MAINTAIN THE EXISTING S.E.
2. MILLING TO THE BOTTOM OF WHEEL RUTS SHALL NOT BE NECESSARY UNLESS REQUIRED TO OBTAIN SLOPE OR THE DESIGN DEPTH AT CENTERLINE.
4. THE AVERAGE DEPTH OF MILLING IS ESTIMATED AS SHOWN ABOVE BUT MAY VARY IN ISOLATED LOCATIONS.



SECTION VIEW



U BAR



ELEVATION VIEW

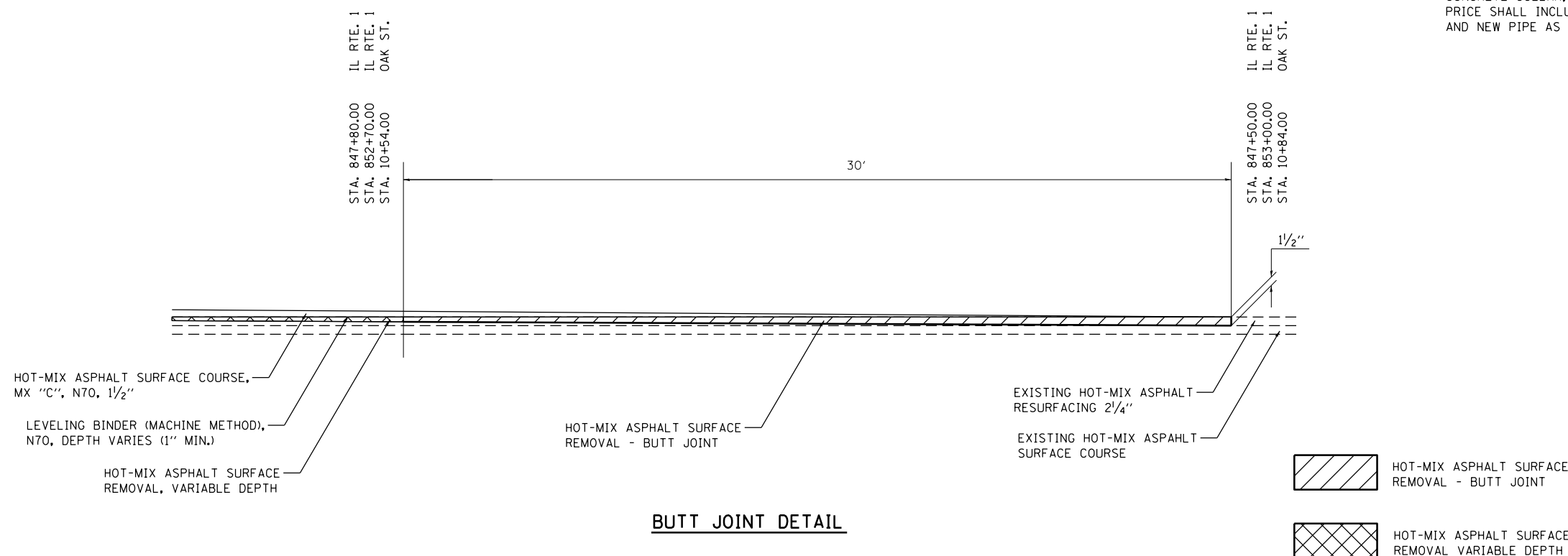
**BILL OF MATERIAL
ONE CONCRETE COLLAR**

Bar	No.	Size	Length	Shape
H	18	#4	4'-6"	—
U	12	#4	10'-0"	U
Concrete Collar			Cu Yd	1.7
Reinforcement Bars			Pound	130

CONCRETE COLLAR FOR PIPE CONNECTION DETAIL

NOTES:

1. COST FOR STRUCTURE EXCAVATION WILL NOT BE PAID FOR SEPARATELY BUT SHALL BE INCLUDED IN THE UNIT BID PRICE FOR CONCRETE COLLAR.
2. FIELD CUT H BARS TO LENGTH
3. THE CONCRETE COLLAR SHALL BE PAID FOR AT THE CONTRACT UNIT PRICE PER CUBIC YARD FOR CONCRETE COLLAR, AS SHOWN ON THE PLANS, WHICH PRICE SHALL INCLUDE THE CUTTING OF EXISTING AND NEW PIPE AS MAY BE REQUIRED.



BUTT JOINT DETAIL

FILE NAME =	USER NAME = steffenmk	DESIGNED - MTM	REVISED -	STATE OF ILLINOIS DEPARTMENT OF TRANSPORTATION	DETAILS			F.A.P. RTE.	SECTION	COUNTY	TOTAL SHEETS	SHEET NO.	
c:\pw\work\p\dot\steffenmk\d0122333\d074220-sh1-details.dgn		DRAWN - JJS	REVISED -		SCALE: N.T.S.	SHEET NO. 2 OF 2 SHEETS	STA.	TO STA.	332	(103B)B-1	WABASH	53	46
		CHECKED - MTM	REVISED -						CONTRACT NO. 74220				
		DATE - SEPTEMBER 2011	REVISED -		ILLINOIS FED. AID PROJECT								