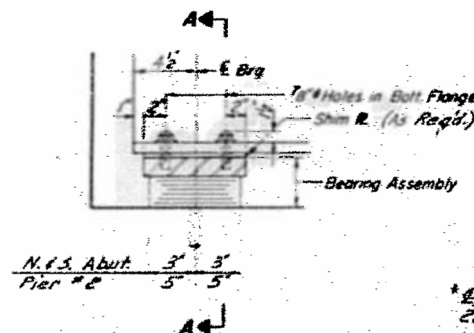
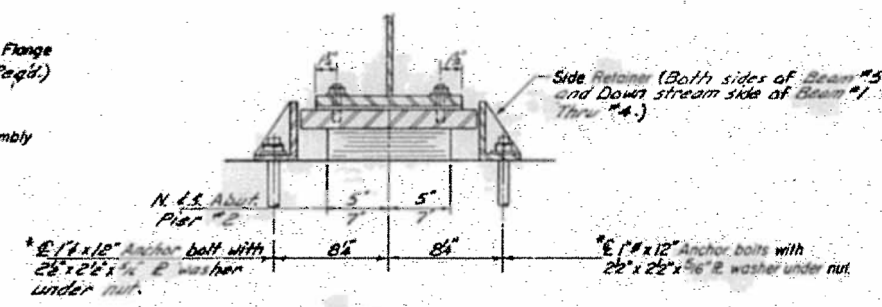


STATE OF ILLINOIS
DEPARTMENT OF TRANSPORTATION

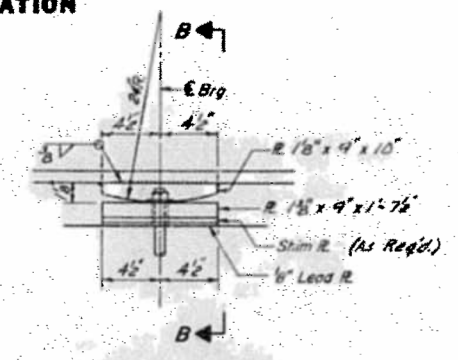
PROJECT NO.	SECTION	SHEET NO.	TOTAL SHEETS
F.A.S. 157	IBR	Moultrie	38 27
DATE		DRAWN BY	
8/6/2013		C.P.P.	



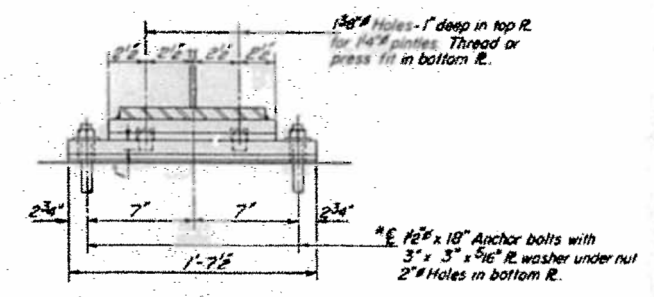
SECTION AT ABUTS & PIER #2



SECTION A-A
(at Beam #5)

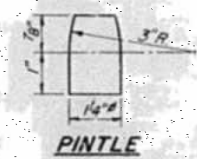


ELEVATION AT PIER #1

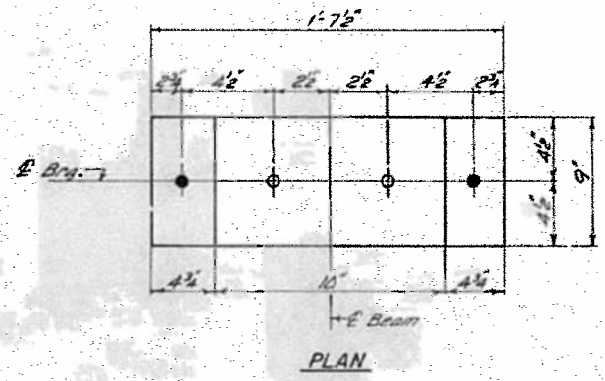


SECTION B-B

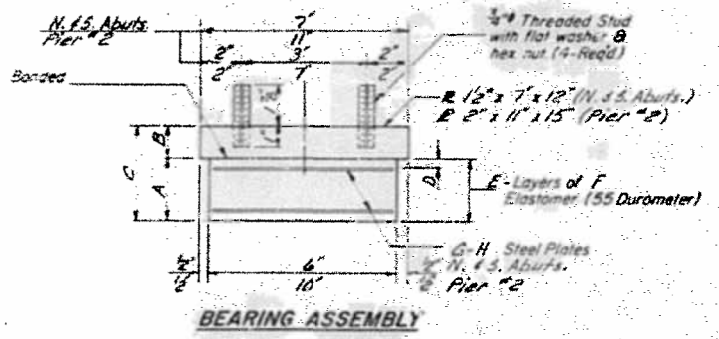
FIXED BEARING



PINTLE



PLAN



BEARING ASSEMBLY

Note: Shim plates shall not be placed under Bearing Assembly.

Note: After girders have been erected holes of expansion bearings shall be drilled and anchor bolts grouted in place. Anchor bolts at fixed bearings may be built into the masonry.

TABLE FOR A THRU H

Location	A	B	C	D	E	F	G	H
N. Abut.	2 1/2	1 1/2	3 3/4	3 1/2	6	5 1/2	5	14.6a
S. Abut.	1 1/2	1 1/2	2 1/2	3 1/2	3	3 1/2	2	14.6a
Pier #2	2 1/2	2	1 1/2	1 1/2	5	1 1/2	4	8

INTERIOR BEAM MOMENT TABLE

	0.4 Span To 0.6 Span #3 Pier #2	0.5 Span To 0.5 Pier #1	0.5 Span To 0.5 Pier #2
I _x (in ⁴)	2100	2100	2100
S _x (in ³)	176	176	176
D (in)	1.122	1.122	1.122
M ₀ (K)	112	193	93
M ₁ (K)	381	307	386
M _{IMP} (K)	114	92	116
M Total (K)	607	592	505
f _s (ksi)	41.4	40.4	40.6

The Load Factor (1.3) [2 + 5 (6 + IMP)] is used in computing moments and stresses.

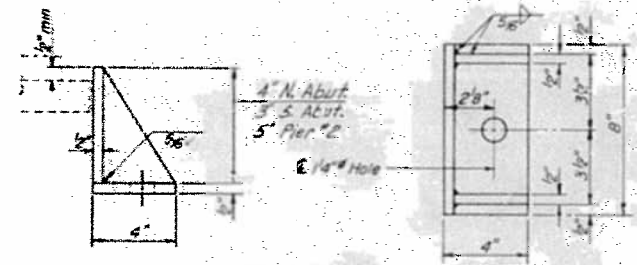
INTERIOR BEAM REACTION TABLE

	So. No. Abut.	Piers #1 #2
R @ (K)	13.9	45.2
R @ (K)	32.1	42.8
RIMP (K)	9.6	12.8
R TOTAL (K)	55.6	100.8

BILL OF MATERIAL

ITEM	UNIT	QUANTITY
Elastomeric Bearing Assembly Type I	Each	15

Note: All steel shall be AASHTO M 222. Steel at Piers shall be unpainted. Steel at Abutments shall be cleaned and given one coat of the Basic Lead Silico Chromate Primer and Morsan Field Coat. Both coats to be applied in the shop with spot painting only in the field.



SIDE RETAINER
(No. Req'd. 1B)

TOP OF FLANGE ELEVATION

	E Brg. S. Abut.	E Brg. N. Abut.	E Pier #1	E Pier #2	E Splice
Beam #1	647.01	646.86	646.96	646.90	646.95
Beam #2	647.15	647.00	647.10	647.04	647.09
Beam #3	647.27	647.12	647.22	647.17	647.21
Beam #4	647.17	647.02	647.12	647.07	647.11
Beam #5	647.05	646.91	647.01	646.95	647.00

**For fabrication only

DESIGNED Chhagon B. Pold
CHECKED R. F. Roskey
DRAWN R. Sommer
CHECKED R. F. & C.P.P.

October 6, 1981
EXAMINED James J. Reibman
PASSED Carl E. Hummer
APPROVED

BEARING DETAILS
F.A.S. RTE. 659 SECTION I-BR
MOULTRIE COUNTY
STA. 173+60.00