

STATE OF ILLINOIS
DEPARTMENT OF TRANSPORTATION
DIVISION OF HIGHWAYS

**PROPOSED
HIGHWAY PLANS**

FAS ROUTE 1807 (US BUS 50)
SECTION D7 SIGNAL MODERNIZATION 2014-1

TYPE of IMPROVEMENT: TRAFFIC SIGNAL MODERNIZATION
LAWRENCE COUNTY

C-97-005-14

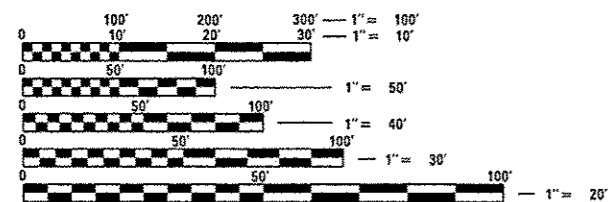
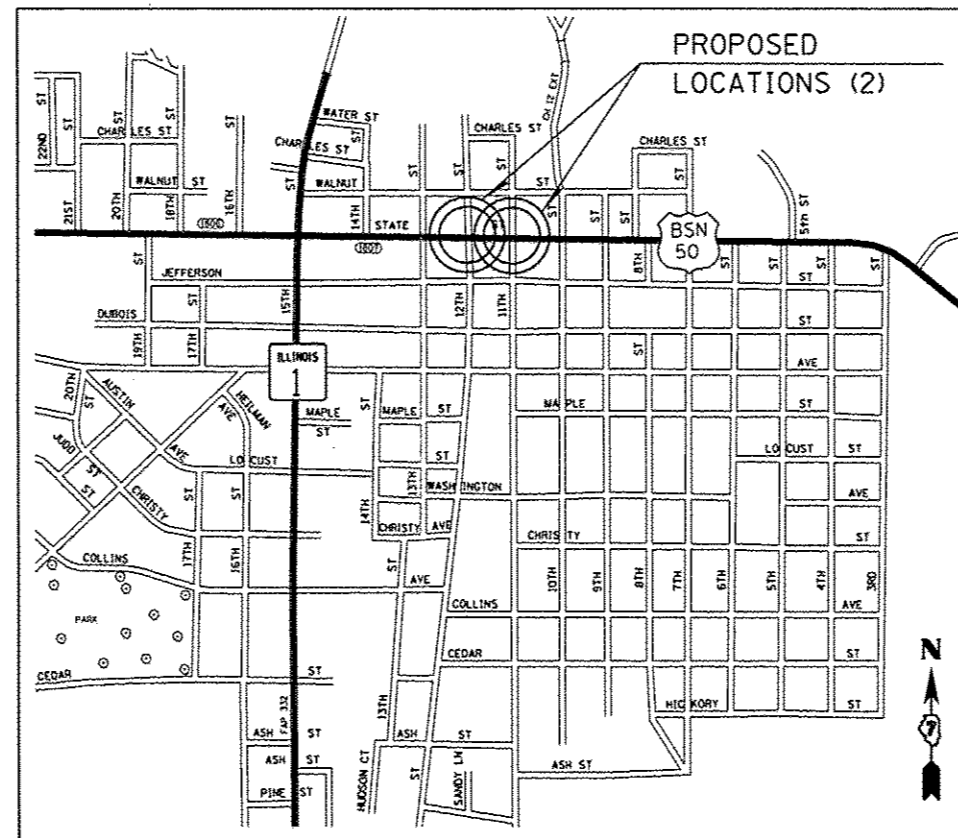
F.A.S. RTE.	SECTION	COUNTY	TOTAL SHEETS	SHEET NO.
1807		LAWRENCE	5	1
		ILLINOIS	CONTRACT NO. 74644	

* D7 SIGNAL MODERNIZATION 2014-1

D-97-003-14



FOR INDEX OF SHEETS, SEE SHEET NO. 2



FULL SIZE PLANS HAVE BEEN PREPARED USING STANDARD ENGINEERING SCALES. REDUCED SIZED PLANS WILL NOT CONFORM TO STANDARD SCALES. IN MAKING MEASUREMENTS ON REDUCED PLANS, THE ABOVE SCALES MAY BE USED.

J.U.L.I.E.
JOINT UTILITY LOCATION INFORMATION FOR EXCAVATION
1-800-892-0123
OR 811

PROJECT ENGINEER-ROB MACKLIN
PROJECT MANAGER-LYNN McCLELLAN

GROSS LENGTH = x.xx FT. = x.xxx MILE
NET LENGTH = x.xx FT. = x.xxx MILE

CONTRACT NO. 74644

STATE OF ILLINOIS
DEPARTMENT OF TRANSPORTATION
DIVISION OF HIGHWAYS

SUBMITTED Oct 24 20 13
Roger L. Drishell, P.E.
DEPUTY DIRECTOR OF HIGHWAYS, REGION ENGINEER

Dec 6 20 13
John D. Baranzelli, P.E.
ENGINEER OF DESIGN AND ENVIRONMENT

Dec 6 20 13
Omer Osman, P.E.
DIRECTOR OF HIGHWAYS, CHIEF ENGINEER

PRINTED BY THE AUTHORITY
OF THE STATE OF ILLINOIS

TRAFFIC SIGNAL GENERAL NOTES

THIS TRAFFIC SIGNAL PROJECT IS LOCATED AT THE INTERSECTIONS OF 12TH STREET & STATE STREET AND 11TH STREET & STATE STREET IN THE CITY OF LAWRENCEVILLE, LAWRENCE COUNTY. THE WORK INCLUDED IN THIS SECTION CONSISTS OF INSTALLING PEDESTRIAN PUSH-BUTTONS AND A WIRELESS VEHICLE DETECTION SYSTEM AT EACH INTERSECTION AND ALL OTHER WORK NECESSARY TO COMPLETE THIS SECTION.

ALL HARDWARE SHALL BE TIGHTENED AND WELL SECURED. CABLES SHALL BE NEATLY WOUND IN HANDHOLES. CABLES SHALL BE NEATLY TRAINED IN THE CONTROLLER CABINET.

ALL THREADS OF BOLTS USED IN ASSEMBLY OF TRAFFIC SIGNAL COMPONENTS SHALL BE COATED WITH A NON-LEAD BASED ANTI-SEIZE COMPOUND, SIMILAR TO LEAD PLATE, PRIOR TO ASSEMBLY.

THE NUMBER OF CONDUCTORS FOR ELECTRIC CABLES AS SHOWN ON THE PLANS SHALL BE THE MINIMUM NUMBER OF CONDUCTORS FURNISHED FOR EACH LOCATION. THE CONTRACTOR MAY SUBSTITUTE AN ELECTRIC CABLE WITH MORE CONDUCTORS THAN SPECIFIED BUT NO ADDITIONAL COMPENSATION WILL BE MADE FOR THE EXTRA CONDUCTORS.

ALL NEW TRAFFIC SIGNAL WIRING SHALL EXTEND FROM CONTROLLER TO SIGNAL. SPLICES IN HANDHOLES WILL NOT BE ALLOW.

CONTRACTOR SHALL ARRANGE TO HAVE THE MANUFACTURER'S REPRESENTATIVE PRESENT FOR THE WIRELESS VEHICLE DETECTION SYSTEM SET-UP.

INDEX OF SHEETS

- 1 COVER SHEET
- 2 INDEX OF SHEETS AND GENERAL NOTES
- 3 SUMMARY OF QUANTITIES
- 4 PLAN LAYOUT AND BILL OF MATERIALS-12th & STATE ST
- 5 PLAN LAYOUT AND BILL OF MATERIALS-11th & STATE ST

THE FOLLOWING STANDARDS ARE A PART OF THESE PLANS AND ARE INCLUDED AFTER SHEET NO. 5:

- 000001-06 STANDARD SYMBOLS, ABBREVIATIONS AND PATTERNS
- 701006-05 OFF-ROAD OPERATIONS, 2L, 2W, 12' TO 24" FROM PAVEMENT EDGE
- 701501-06 URBAN LANE CLOSURE, 2L, 2W, UNDIVIDED
- 701901-03 TRAFFIC CONTROL DEVICES
- 720001-01 SIGN PANEL MOUNTING DETAILS
- 857001-01 STANDARD PHASE DESIGNATION DIAGRAMS AND PHASE SEQUENCES

FILE NAME :	USER NAME : staffennk	DESIGNED -	REVISED -	STATE OF ILLINOIS DEPARTMENT OF TRANSPORTATION	INDEX OF SHEETS GENERAL NOTES	F.A.S. RTE.	SECTION	COUNTY	TOTAL SHEETS	SHEET NO.	
c:\pwwork\pvidot\staffennk\0368916\07	74644-shi-plan.dgn	DRAWN -	REVISED -			1807		LAWRENCE	5	2	
	PLOT SCALE = 20.0000' / 1"	CHECKED -	REVISED -			CONTRACT NO. 74644					
	PLOT DATE = 10/24/2013	DATE -	REVISED -			ILLINOIS FED. AID PROJECT					
					SCALE:	SHEET	OF	SHEETS	STA.	TO STA.	

SUMMARY OF QUANTITIES			TOTAL QUANTITIES	CONSTRUCTION TYPE CODE		
CODE NO	ITEM	UNIT		0021		
67100100	MOBILIZATION	L SUM	1	1		
70102620	TRAFFIC CONTROL AND PROTECTION, STANDARD 701501	L SUM	1	1		
87301245	ELECTRIC CABLE IN CONDUIT, SIGNAL NO. 14 5C	FOOT	1071	1071		
88800100	PEDESTRIAN PUSH-BUTTON	EACH	16	16		
89502210	MODIFY EXISTING CONTROLLER CABINET	EACH	2	2		
XX007739	WIRELESS VEHICLE DETECTION SYSTEM	EACH	2	2		

SUMMARY OF QUANTITIES			TOTAL QUANTITIES	CONSTRUCTION TYPE CODE		
CODE NO	ITEM	UNIT				

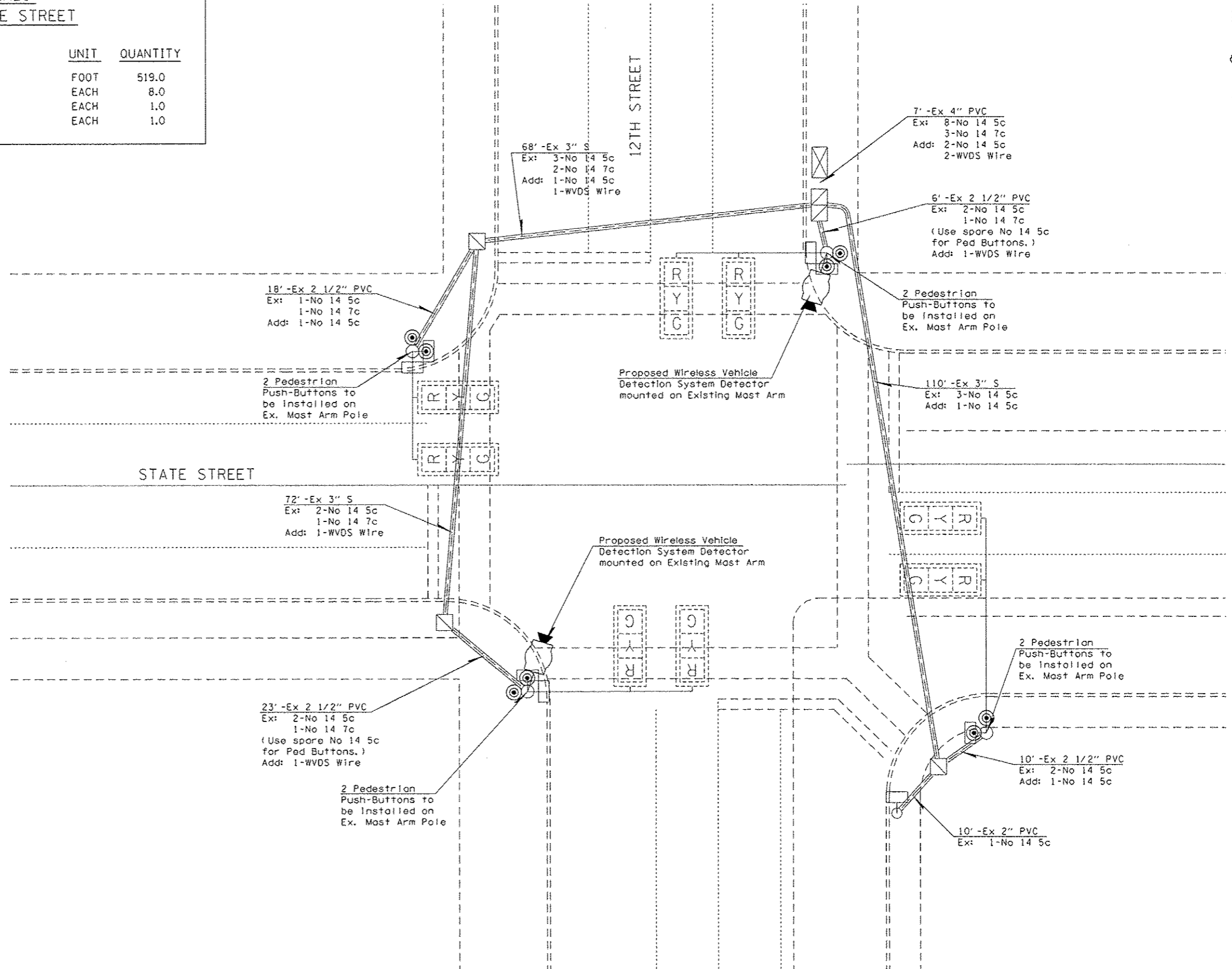
FILE NAME =	USER NAME = staffennk	DESIGNED -	REVISED -
ei:\pwwork\pvidot\staffennk\08360916\07	*644*sh1-plan.dgn	DRAWN -	REVISED -
	PLOT SCALE = 100.0000' / 1"	CHECKED -	REVISED -
	PLOT DATE = 10/24/2013	DATE -	REVISED -

STATE OF ILLINOIS
DEPARTMENT OF TRANSPORTATION

SUMMARY OF QUNATITIES			F.A.S. RTE.	SECTION	COUNTY	TOTAL SHEETS	SHEET NO.
SCALE:	SHEET	OF	SHEETS	STA.	TO STA.	LAWRENCE	5
						CONTRACT NO. 74644	3
						ILLINOIS FED. AID PROJECT	

BILL OF MATERIALS
12TH STREET & STATE STREET

ITEM	UNIT	QUANTITY
ELECTRIC CABLE IN CONDUIT, SIGNAL, NO 14 5C	FOOT	519.0
PEDESTRIAN PUSH-BUTTON	EACH	8.0
MODIFY CONTROLLER CABINET	EACH	1.0
WIRELESS VEHICLE DETECTION SYSTEM	EACH	1.0



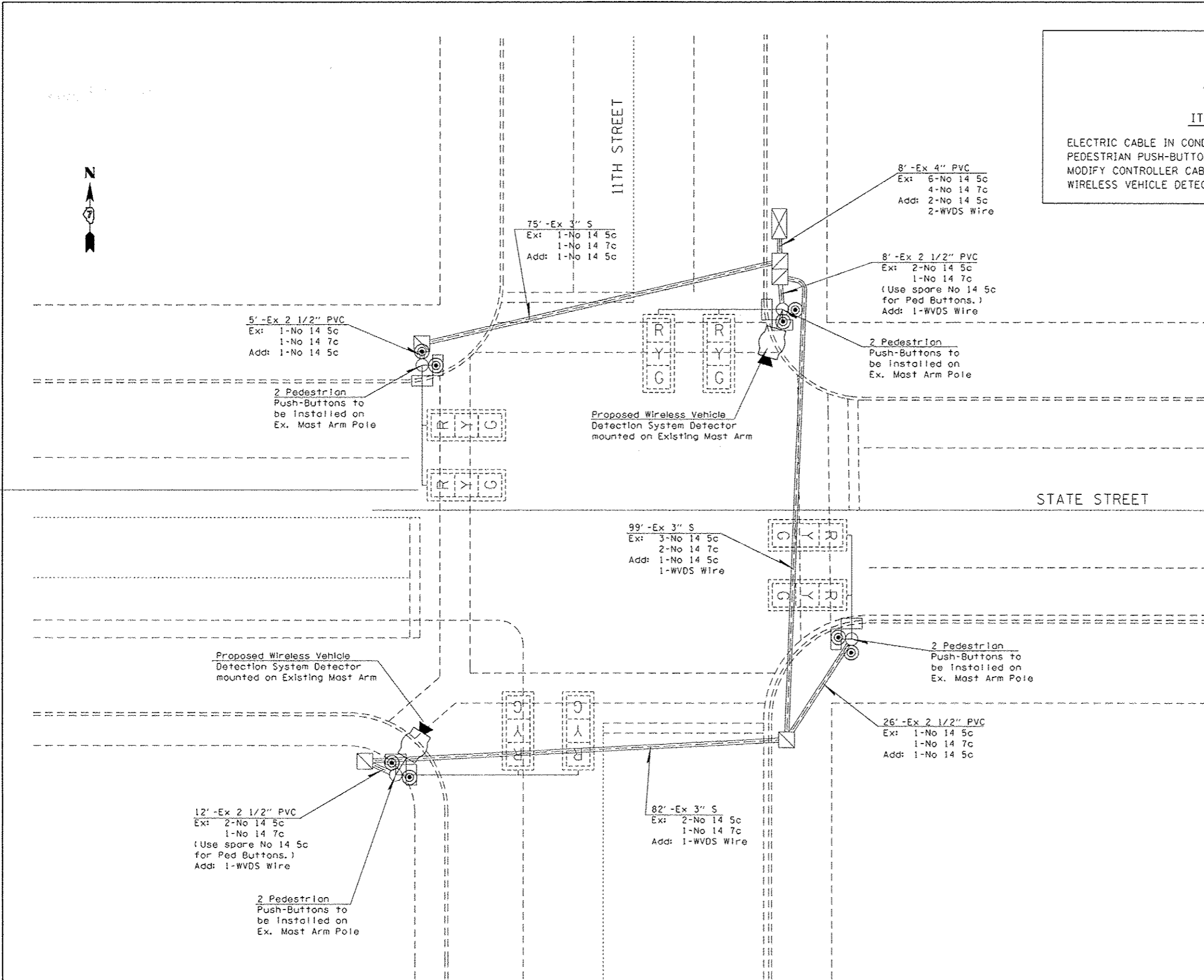
LEGEND

	Proposed Wireless Vehicle Detection System
	Existing Signal Head with Backplate
	Existing Pedestrian Signal Head
	Existing Signal Post
	Proposed Pedestrian Push-Button
	Existing Mast Arm

FILE NAME: 1	USER NAME: staffennk	DESIGNED: -	REVISED: -	STATE OF ILLINOIS DEPARTMENT OF TRANSPORTATION	SIGNAL MODERNIZATION INTERSECTION OF 12TH ST & STATE ST		F.A.S. RTE.:	SECTION:	COUNTY:	TOTAL SHEETS:	SHEET NO.:	
c:\pwworkspace\staffennk\10368916\1074644\shc-plan.dgn	10/24/2013	DRAWN: -	REVISED: -		SCALE:	SHEET OF SHEETS:	STA. TO STA.:	1807	*	LAWRENCE	5	4
PLOT SCALE: 20.0000" = 1'	DATE: -	CHECKED: -	REVISED: -		CONTRACT NO. 74644							
PLOT DATE: 10/24/2013	DATE: -	REVISIONS:	REVISIONS:		ILLINOIS FED. AID PROJECT							

BILL OF MATERIALS
11TH STREET & STATE STREET

ITEM	UNIT	QUANTITY
ELECTRIC CABLE IN CONDUIT, SIGNAL, NO 14 5c	FOOT	552.0
PEDESTRIAN PUSH-BUTTON	EACH	8.0
MODIFY CONTROLLER CABINET	EACH	1.0
WIRELESS VEHICLE DETECTION SYSTEM	EACH	1.0



LEGEND

	Proposed Wireless Vehicle Detection System
	Existing Signal Head with Backplate
	Existing Pedestrian Signal Head
	Existing Signal Post
	Proposed Pedestrian Push-Button
	Existing Mast Arm

FILE NAME * c:\pwwork\pwwork\staff\erik\030916\07	USER NAME * staff/erik	DESIGNED - DRAWN -	REVISED - REVISED -	STATE OF ILLINOIS DEPARTMENT OF TRANSPORTATION	SIGNAL MODERNIZATION INTERSECTION OF 11TH ST & STATE ST	F.A.S. RTE. 1807	SECTION *	COUNTY LAWRENCE	TOTAL SHEETS 5	SHEET NO. 5
PLOT SCALE * 20,0000 1/4 in.	CHECKED -	REVISED -	CONTRACT NO. 74644							
PLOT DATE * 12/24/2013	DATE -	REVISED -	ILLINOIS FED. AID PROJECT							
SCALE: SHEET OF SHEETS STA. TO STA.			*07 SIGNAL MODERNIZATION 2014-1							