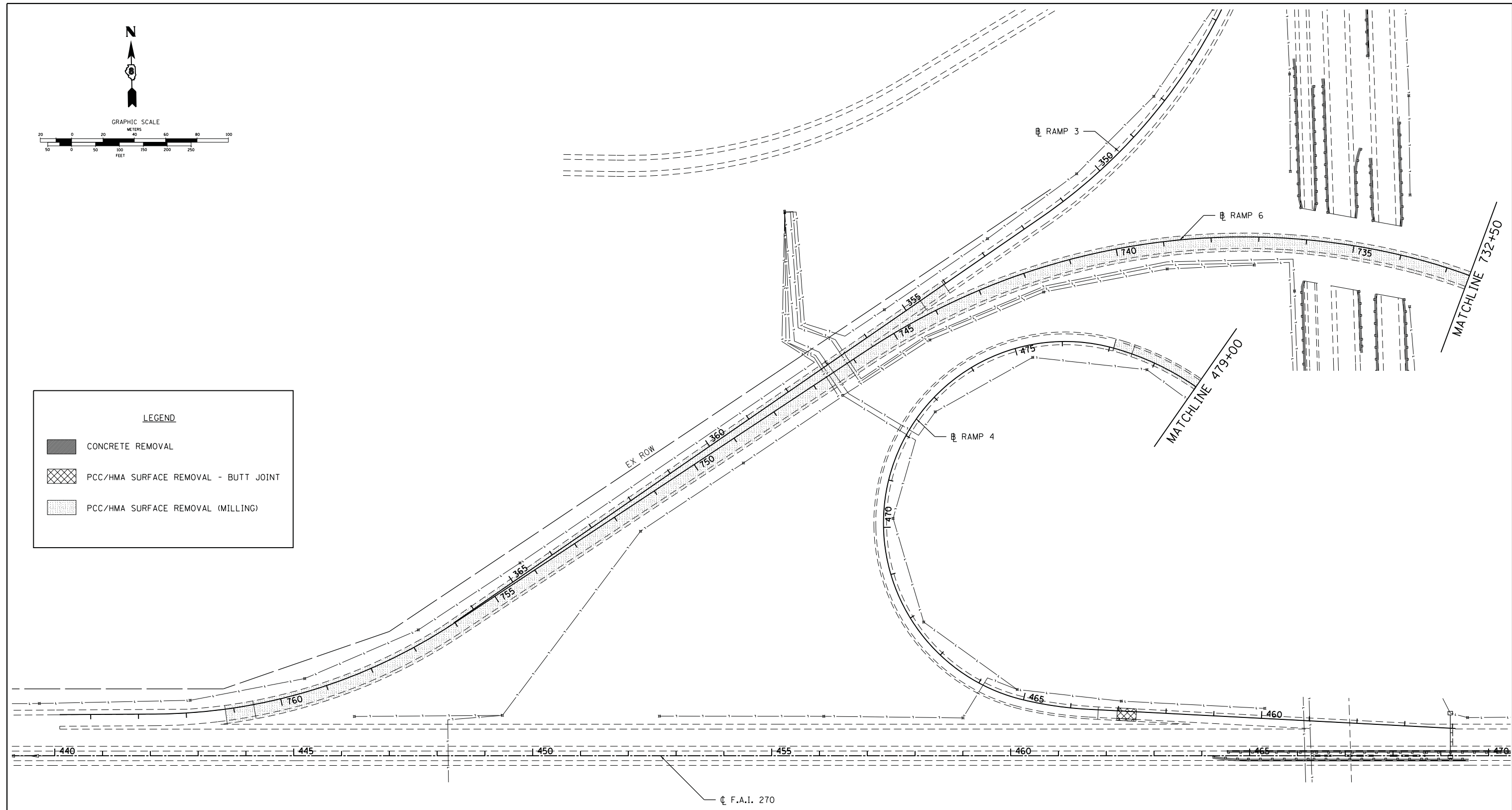


LEGEND

	CONCRETE REMOVAL
	PCC/HMA SURFACE REMOVAL - BUTT JOINT
	PCC/HMA SURFACE REMOVAL (MILLING)



FILE NAME =	USER NAME = kschwierjohn	DESIGNED - KJS	REVISED -	STATE OF ILLINOIS DEPARTMENT OF TRANSPORTATION	1270 REMOVALS (WESTBOUND)			F.A.I. RTE.	SECTION	COUNTY	TOTAL SHEETS	SHEET NO.
H:\6513 IDOT DB Ver\6513.09 WO 9 1-2550ver10yRevised\CADD_Sheets\0876F10-sht-rem7.dgn	DRAWN - KOJ/KJS	REVIS	REVIS		255	60-18,9RS-1	MADISON	206	103			
PLOT SCALE = 99.9998' / in.	CHECKED - SAR	REVIS	REVIS		CONTRACT NO. 76F10							
PLOT DATE = 9/24/2013	DATE - 7/19/13	REVIS	REVIS		ILLINOIS FED. AID PROJECT							
				SCALE:	SHEET NO. 7 OF 8 SHEETS	STA. 443+00	TO STA. 463+00					