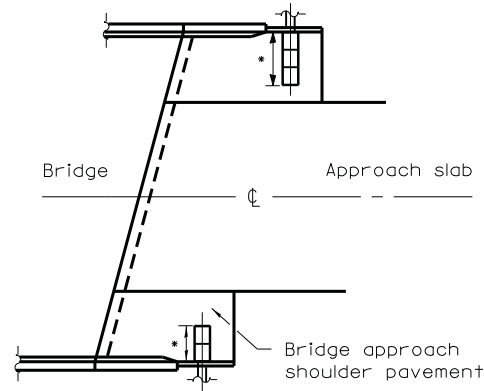
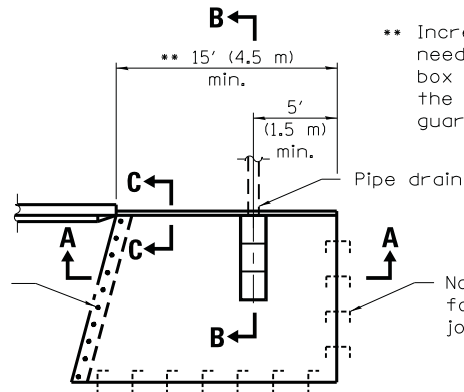


• Type B, C, or D inlet box as required.



GENERAL PLAN

Tie bars at 12 (300) cts. (by Bridge Contractor)

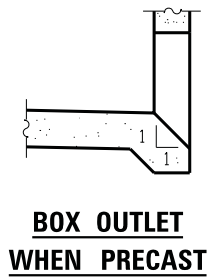


TYPICAL DETAIL PLAN

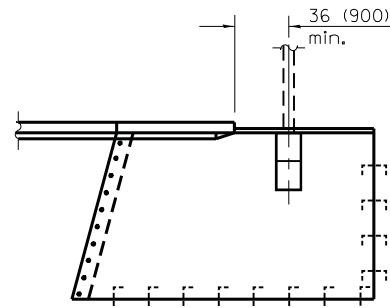
(W/O Wingwall)

** Increase this dimension as needed to position the inlet box and pipe drain between the proposed approach guard rail posts.

No. 6 (No. 19) tie bars as detailed for longitudinal construction joint on Standard 420001



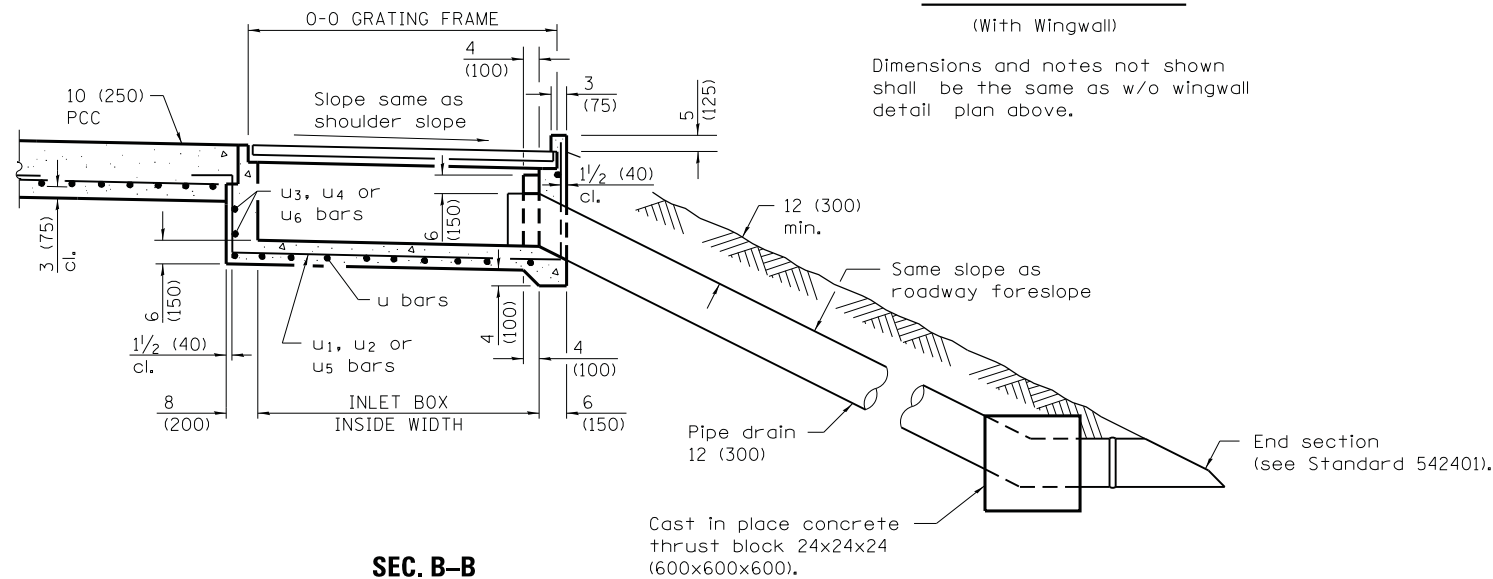
BOX OUTLET WHEN PRECAST



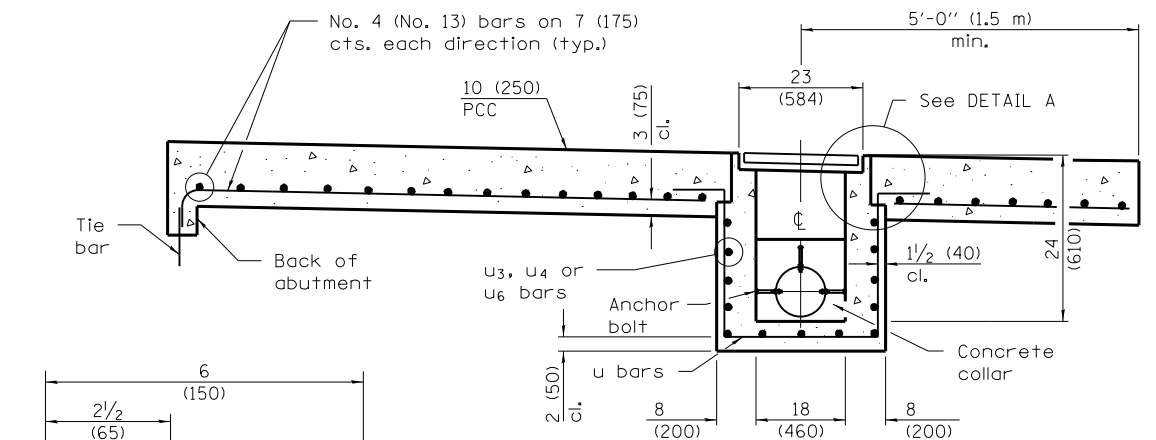
TYPICAL DETAIL PLAN

(With Wingwall)

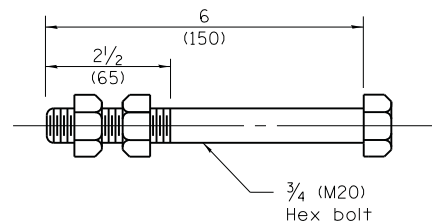
Dimensions and notes not shown shall be the same as w/o wingwall detail plan above.



SEC. B-B

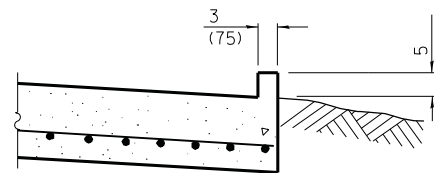


SEC. A-A



ANCHOR BOLT

(Used to tie pipe to concrete collar)



SEC. C-C

GENERAL NOTES

All exposed edges of the inlet, except the upper perimeter, shall be beveled 3/4 (20).

For placement of approach shoulder pavement on existing construction substitute expansion ties for bars. Omit tie bars for flexible approaches or bridge approach shoulder pavement constructed monolithically with shoulder pavement.

All dimensions are in inches (millimeters) unless otherwise shown.

BRIDGE APPROACH SHOULDER PAVEMENT AND DRAIN

INLET TYPE	SHOULDER WIDTH	0-0 GRATING FRAME	INLET BOX INSIDE WIDTH	INLET BOX INSIDE LENGTH
Type B	Less than 5' (1.5 m)	2'-3" (0.690 m)	1'-10" (0.560 m)	18 (460)
Type C	5' (1.5 m) - 6' (1.8 m)	4'-4" (1.325 m)	3'-11" (1.195 m)	18 (460)
Type D	Greater than 6' (1.8 m)	6'-5" (1.960 m)	6'-0" (1.830 m)	18 (460)