

GENERAL NOTES

1. Plan dimensions, elevation and details relative to existing plans are subject to nominal construction variations. The contractor shall field verify existing dimensions and details affecting new construction and make necessary approved adjustments prior to construction or ordering of materials. Such variations shall not be cause for additional compensation for a change in scope of the work, however, the Contractor will be paid for the quantity actually furnished at the unit price bid for the work.
2. Areas of deck repairs shown are estimated. The Engineer shall show actual locations of deck repair on As-Built Plans.

BILL OF MATERIAL

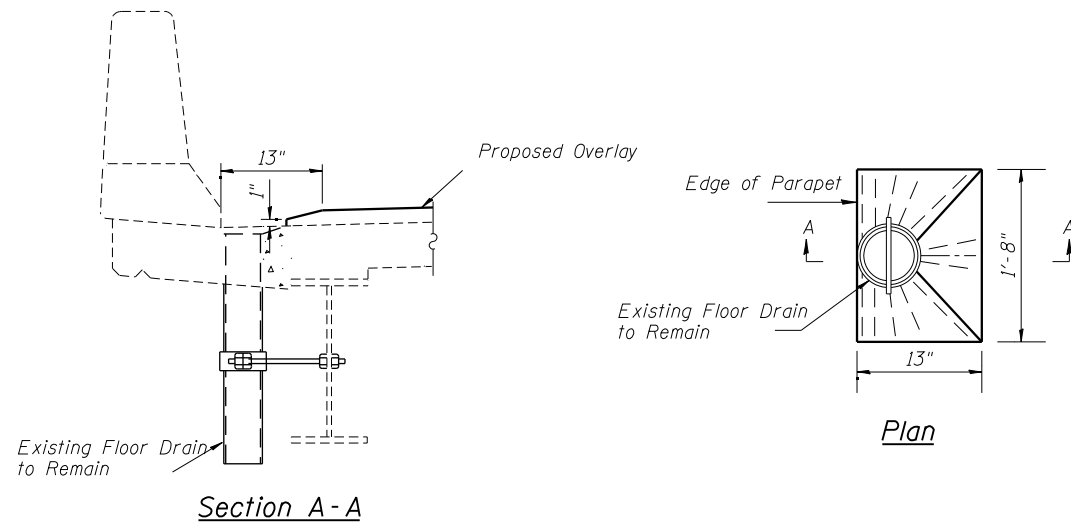
Item	Unit	Total
** Polymerized Hot-Mix Asphalt Surface Course, Mix "E", N90.	Ton	563
* Concrete Sealer	Sq Ft	5939
Deck Slab Repair - (Partial Depth)	Sq Yd	10.8
Deck Slab Repair - (Full Depth, Type I)	Sq Yd	4.0
Silicone Joint Sealer, 2"	Foot	56
Waterproofing Membrane System	Sq Yd	5030

* Concrete Sealer shall be applied to the top and inside vertical faces of the parapets only. No Concrete Sealer over the Overlay.

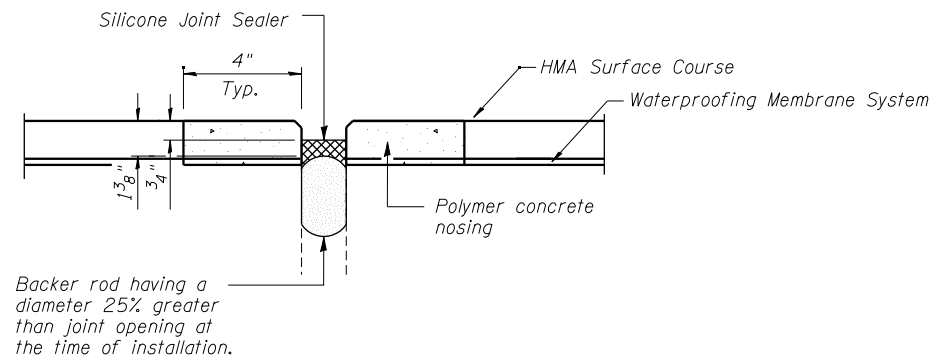
** Minimum thickness of HMA Surface Course is 1 1/2". Maximum total thickness of HMA Surface Course plus Waterproofing Membrane System is 2".

INDEX OF SHEETS

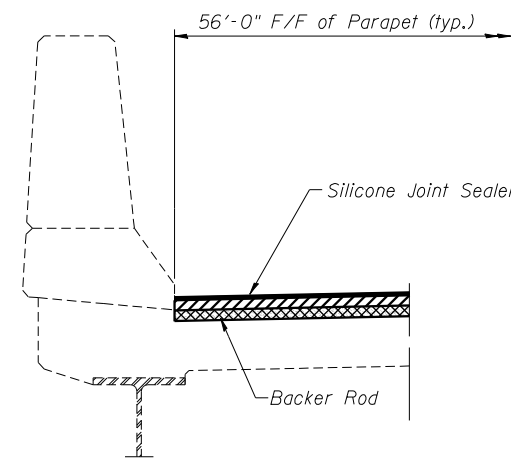
1. General Plan and Elevation
2. General Data
3. Stage Construction North and South bound
4. Temporary Concrete Barrier Details For Stage Construction
5. Deck Patching Plan North bound
6. Deck Patching Plan South bound



Proposed Overlay at Existing Floor Drains



SILICONE JOINT SEALER
(060-0219 S. Abutment)



SECTION Thru Parapet

9/25/2013 9:51:12 AM C:\Users\sdg\Documents\060-0219-S-Abutment\060-0219-S-Abutment.dgn

FILE NAME = *FILES*



USER NAME = sdg	DESIGNED - SDG	REVISED -
	CHECKED - FAS	REVISED -
PLOT SCALE = *SCALE*	DRAWN - DMG	REVISED -
PLOT DATE = 9/25/2013	CHECKED - SDG	REVISED -

**STATE OF ILLINOIS
DEPARTMENT OF TRANSPORTATION**

**GENERAL DATA
STRUCTURE NO. 060-0218NB & 060-0219SB**

SHEET NO. 2 OF 6 SHEETS

F.A.I. RTE.	SECTION	COUNTY	TOTAL SHEETS	SHEET NO.
255	60-(8,9) RS-1	MADISON	206	146
			CONTRACT NO. 76F10	
ILLINOIS FED. AID PROJECT				