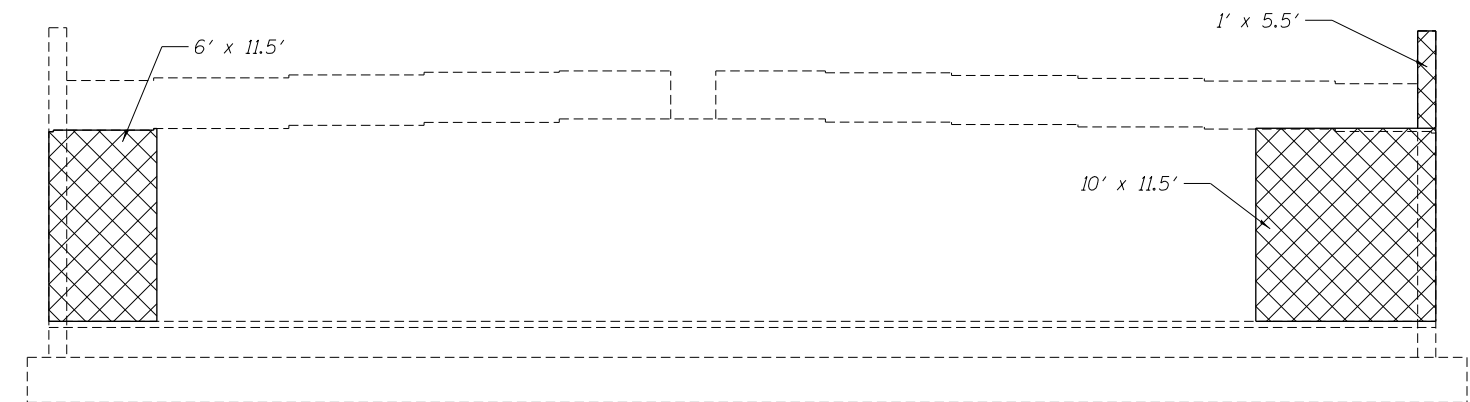


3/25/2013 3:26:32 PM - G:\S1\2\0001\Bridges\CAD\sheets\Bridges_0220-022\0600220-76F10-18-South Abutment Repair.dgn

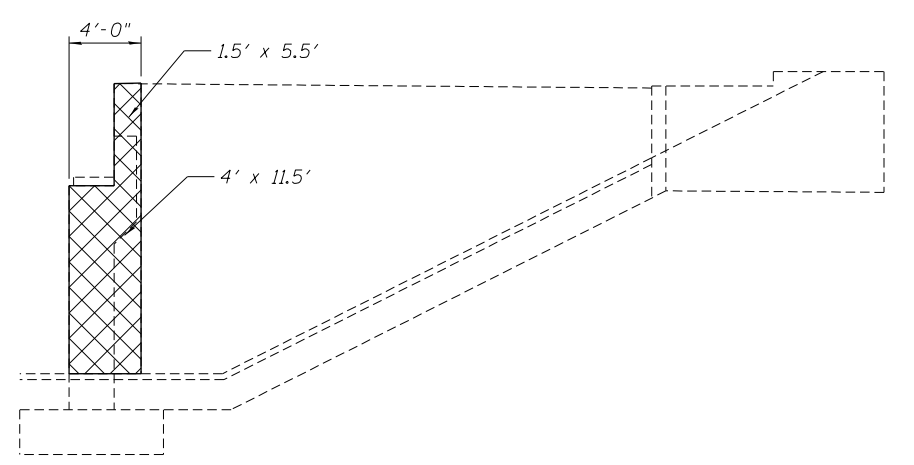


PLAN

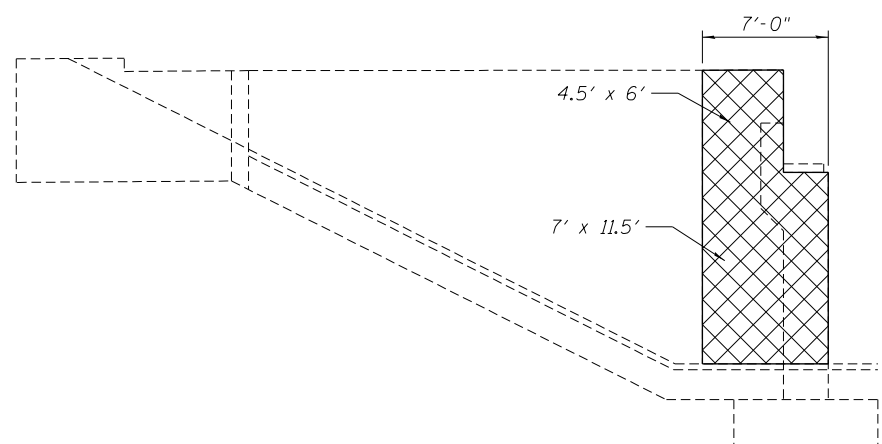
Temporary shoring is required for Beam 11, to be paid for as "Temporary Shoring and Cribbing."



ELEVATION



WEST WING WALL



EAST WING WALL

DL (K)	79.20
LL (K)	55.42
Imp. (K)	9.18
Total (K)	143.80

LEGEND

Structural Repair of Concrete < 5"

BILL OF MATERIAL

Item	Unit	Total
Structural Repair of Concrete (Depth Equal to or less than 5 inches)	Sq. Ft.	356.3
Temporary Shoring and Cribbing	L.S.	1

NOTE:

Rope texture not required on repaired concrete surface.

FILE NAME = 0600220-76F10-18-South Abutment Repair.dgn



USER NAME = ghowley	DESIGNED -	REVISD - SDG
PLOT SCALE = 1/8" = 1' / in.	CHECKED -	REVISD - FAS
PLOT DATE = 3/25/2013	DRAWN -	REVISD - DMG
	CHECKED -	REVISD - SDG

**STATE OF ILLINOIS
DEPARTMENT OF TRANSPORTATION**

**SOUTH ABUTMENT REPAIRS
STRUCTURE NO. 060-0220SB**

SHEET NO. 18 OF 19 SHEETS

F.A.I. RTE.	SECTION	COUNTY	TOTAL SHEETS	SHEET NO.
255	60-(8,9) RS-1	MADISON	206	168
			CONTRACT NO. 76F10	
ILLINOIS FED. AID PROJECT				