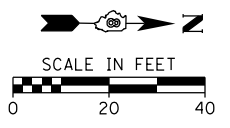
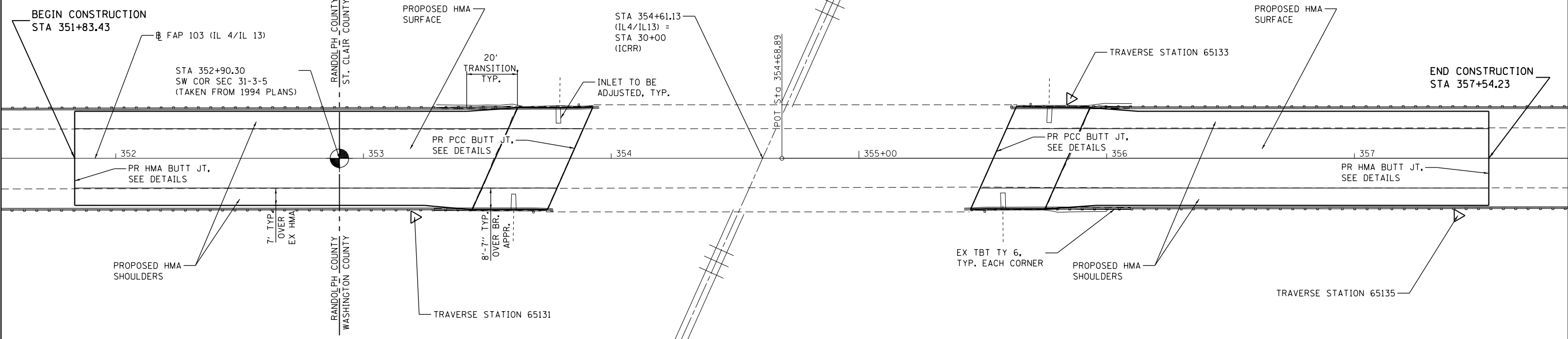


ALIGNMENT INFORMATION (FAP 103 (IL 4/IL 13))		
STA 348+44.88	STA 354+68.89	STA 360+49.89
N=565248.374	N=565872.379	N=566453.374
E=2429716.721	E=2429714.357	E=2429712.156



PLAN	SURVEYED	DATE
	PLOTTED	
	ALIGNED	
	CHECKED	
	FILE NAME	
	NO.	

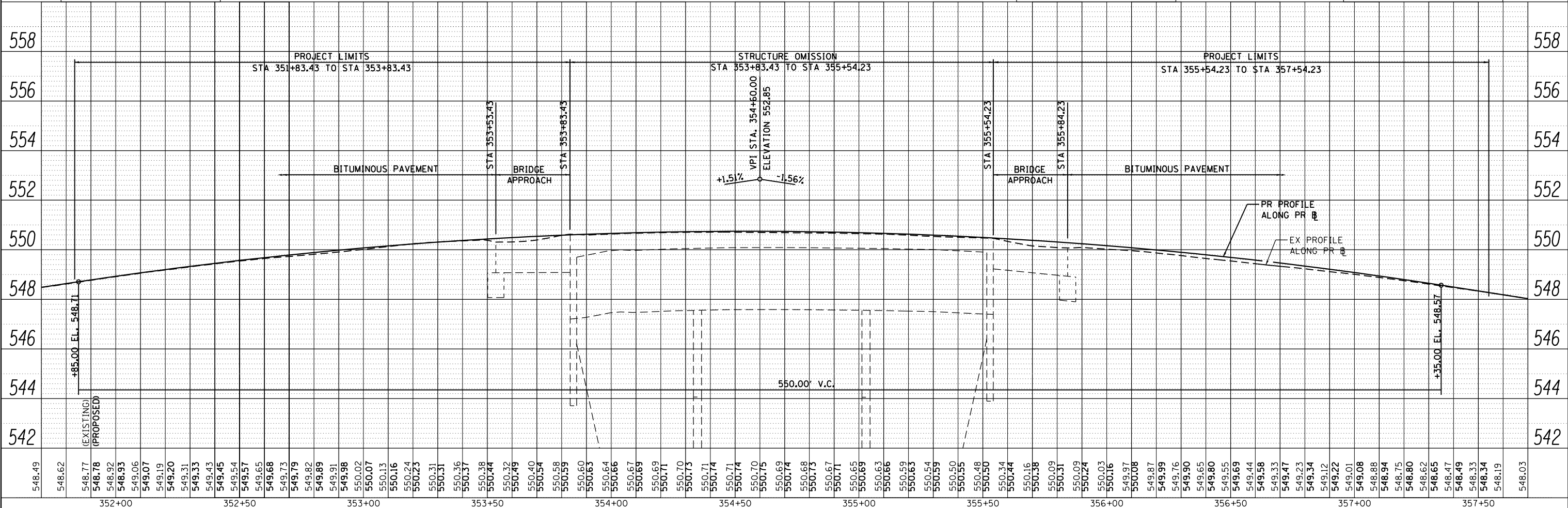


TRAVERSE STATION 65131
STA 353+20.62, OFF 23.69' RT
N=565724.204 E=2429738.610
EL=548.863

TRAVERSE STATION 65133
STA 355+85.32, OFF 24.06' LT
N=565988.721 E=2429689.859
EL=548.420

TRAVERSE STATION 65135
STA 357+41.73, OFF 23.10' RT
N=566145.309 E=2429736.422
EL=546.984

PROFILE	SURVEYED	DATE
	PLOTTED	
	GRADES CHECKED	
	STRUCTURE NOTATIONS CHECKED	
	NO.	



FILE NAME = H:\6513 IDOT D8 Var\6513.08 W0 B\IL 4-13\ADD Sheets\0876050-sh07-plnprf.dgn	USER NAME = k1eux	DESIGNED -	REVISED -	<b>STATE OF ILLINOIS</b> <b>DEPARTMENT OF TRANSPORTATION</b>	<b>PLAN AND PROFILE</b> SCALE: SHEET NO. 1 OF 1 SHEETS STA. 351+70 TO STA. 357+70	FAP R/E 103	SECTION 22VB-RS	COUNTY WASHINGTON	TOTAL SHEETS 7	SHEET NO. 7
PLOT SCALE = 40.0000' / in.	CHECKED -	REVISED -	CONTRACT NO. 76G50							
PLOT DATE = 10/31/2013	DATE -	REVISED -	FED. ROAD DIST. NO. ILLINOIS FED. AID PROJECT							

HWG NO. 6513.081