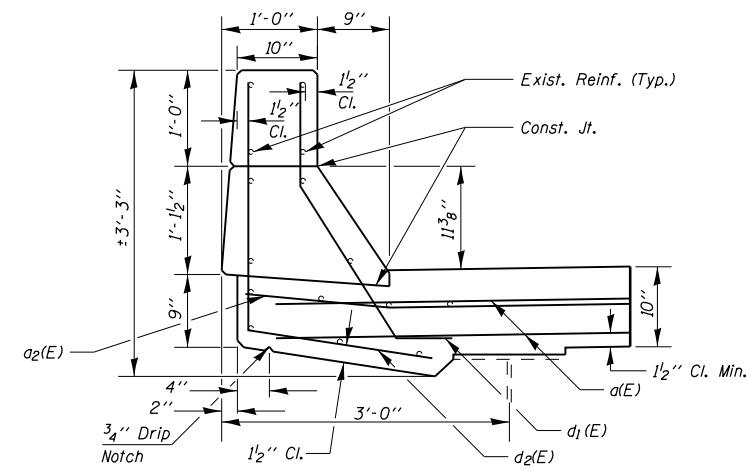
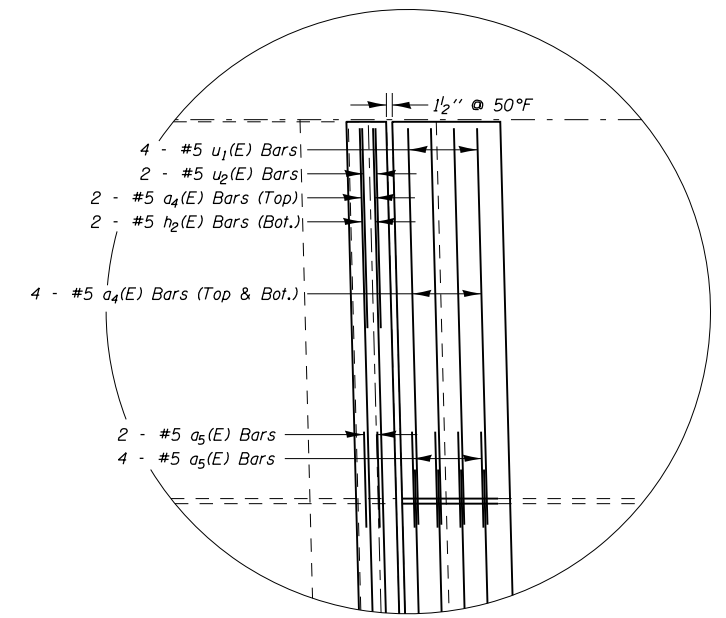


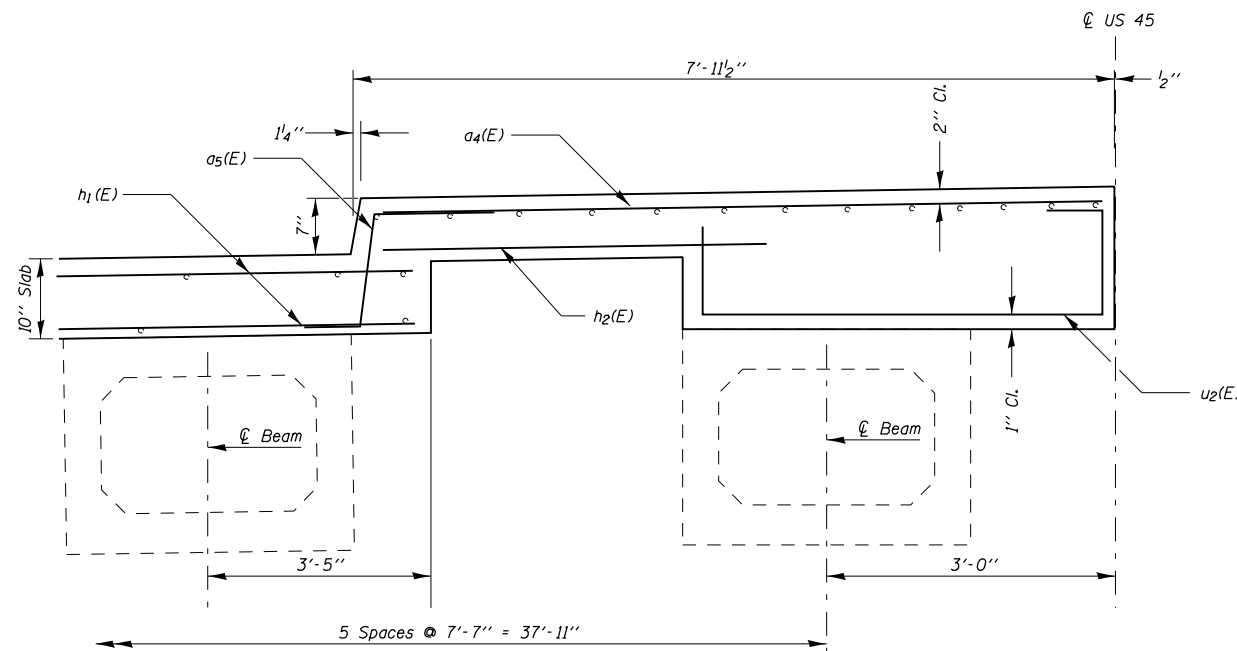
**HALF-SECTION THROUGH
MEDIAN ON STRUCTURE**



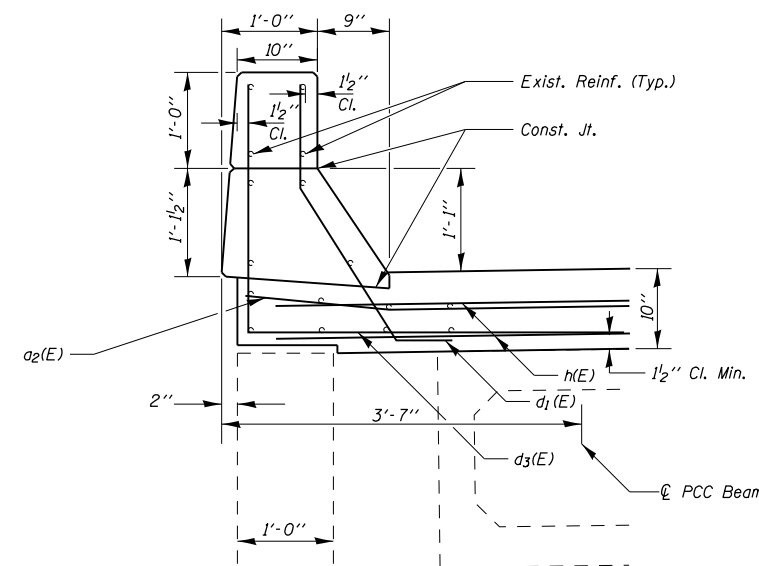
**SECTION THROUGH PARAPET
ON STRUCTURE**



DETAIL A



**HALF-SECTION THROUGH
MEDIAN ON APPROACH PAVEMENT**



**SECTION THROUGH PARAPET
ON APPROACH PAVEMENT**

BILL OF MATERIAL (2 ABUTMENTS)

064-0029			
BAR NO.	SIZE	LENGTH	SHAPE
a(E)	32	5	19'-5"
a1(E)	32	5	16'-9"
a2(E)	24	6	4'-0"
a4(E)	40	5	7'-6"
a5(E)	24	5	3'-0"
d1(E)	24	5	3'-6"
d2(E)	16	4	4'-6"
d3(E)	8	4	6'-6"
h(E)	16	6	19'-5"
h1(E)	8	6	16'-9"
h2(E)	8	5	4'-0"
s1(E)	32	5	5'-3"
u1(E)	16	5	5'-6"
u2(E)	8	5	6'-9"
CONCRETE SUPERSTRUCTURE		CU YD	20.9
CONCRETE REMOVAL		CU YD	18.2
BAR SPLICERS		EACH	48
REINFORCEMENT BARS EPOXY COATED		POUND	2940

**JOINT REPLACEMENT &
REINFORCEMENT DETAILS
STRUCTURE NO. 064-0029**

FILE NAME =	USER NAME = \$USER\$	DESIGNED -	REVISED -	STATE OF ILLINOIS DEPARTMENT OF TRANSPORTATION	PARAPET AND MEDIAN DETAILS			F.A.I. R.E.	SECTION	COUNTY	TOTAL SHEETS	SHEET NO.
c:\pwork\work\pwork\adamson\d0253203\064-0029-sh.t.dgn		DRAWN -	REVISED -					24	.	MASSAC	16	10
\$MODELNAME\$	PLOT SCALE = 8.0000' / in.	CHECKED -	REVISED -					CONTRACT NO. 78249				
	PLOT DATE = 10/15/2013	DATE -	REVISED -					ILLINOIS FED. AID PROJECT				