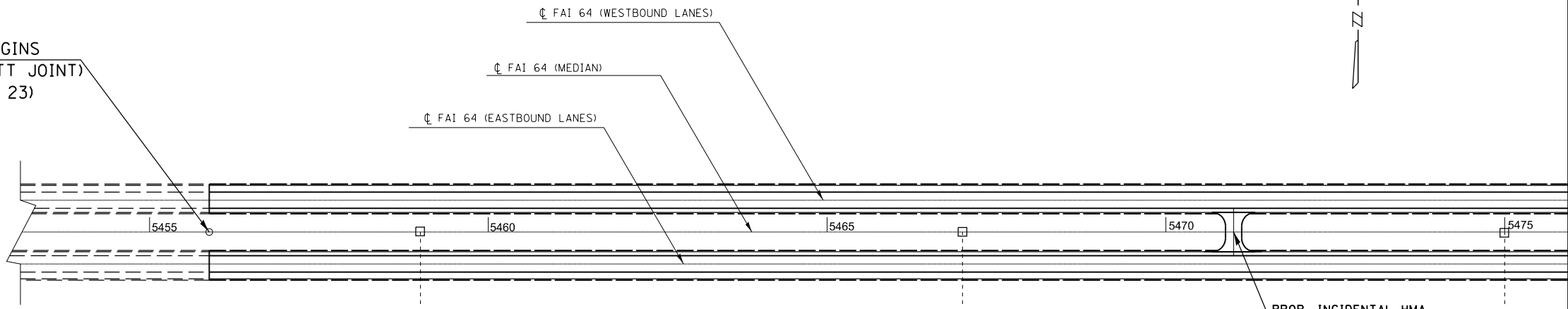


PROP. PROJECT BEGINS
STA. 5455+88 (BUTT JOINT)
(SEE DETAIL, SHT. 23)

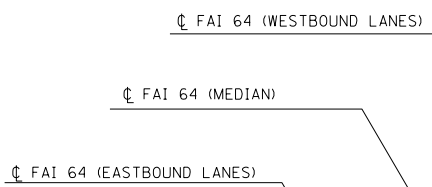


PROP. INCIDENTAL HMA
SURFACE - 17 TONS
AT EX. MEDIAN CROSSOVER
STA. 5471+00
(SEE DETAIL, SHT. 23)

SEE DETAIL FOR SURFACE
REDUCTION TO MAINTAIN
VERTICAL CLEARANCE, SHT. 24.

SN 097-0041 - STA. 5494+95.22
OVERPASS CARRIES T.R. 282
EAST CLEARANCE HT. - 16'-0"
WEST CLEARANCE HT. - 16'-0"

MP 123



SN 097-7006 - STA. 5505+50
EX. 5'X5'X328' BOX CULV.

SEE DETAIL FOR SURFACE
REDUCTION TO MAINTAIN
VERTICAL CLEARANCE, SHT. 24.

MP 123

•(97-2-1)RS-1; BSMART 2012-1,2,3

FILE NAME =	USER NAME = mccordkr	DESIGNED -	REVISED -
ei:\pwork\pwork\mccordkr\0282931\78282-sht-plan.dgn		DRAWN -	REVISED -
	PLOT SCALE = 200.0000' / in.	CHECKED -	REVISED -
	PLOT DATE = 10/29/2013	DATE -	REVISED -

**STATE OF ILLINOIS
DEPARTMENT OF TRANSPORTATION**

**PLAN LAYOUT
STA. 5455 + 88 TO STA. 5507 + 44**

SCALE: SHEET OF SHEETS STA. TO STA.

F.A.I. RTE.	SECTION	COUNTY	TOTAL SHEETS	SHEET NO.
64	.	WHITE	54	17
CONTRACT NO. 78282				
ILLINOIS FED. AID PROJECT				