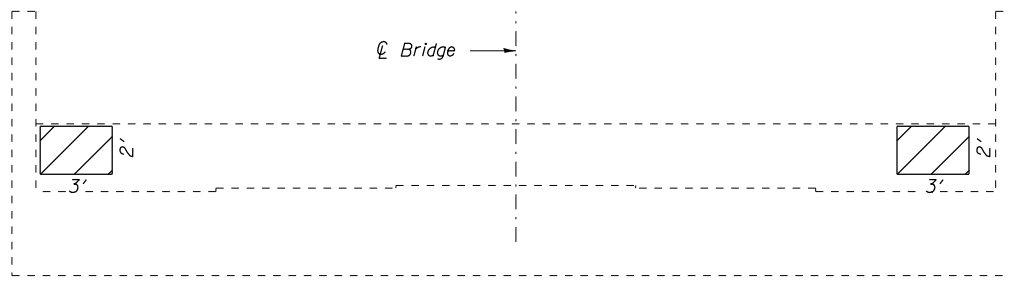
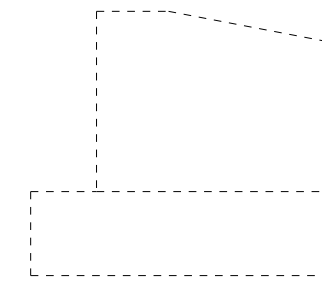


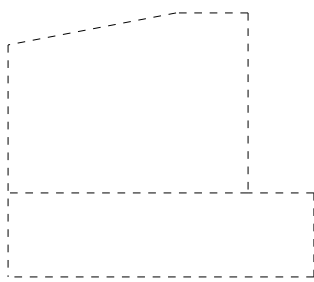
WEST ABUTMENT
Looking North



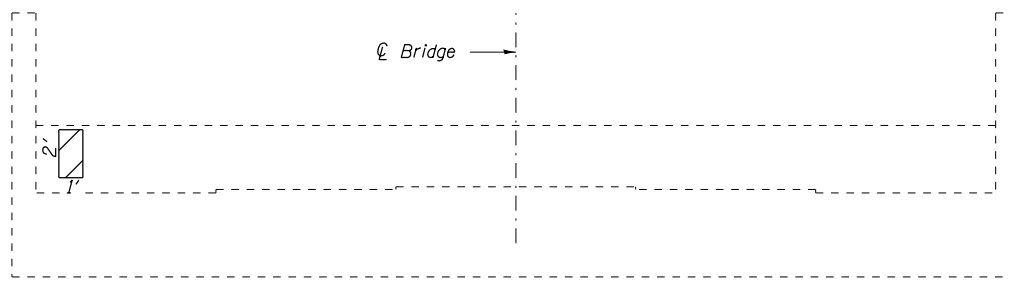
WEST ABUTMENT
Looking West



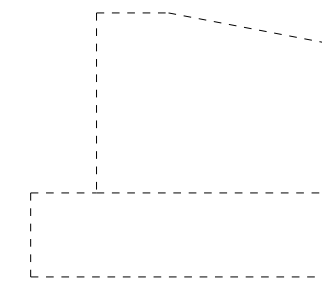
WEST ABUTMENT
Looking South



EAST ABUTMENT
Looking South



EAST ABUTMENT
Looking East



EAST ABUTMENT
Looking North

BILL OF MATERIAL

Item	Unit	Total
Structural Repair of Concrete (Depth < Inches)	Sq. Ft.	14

SUBSTRUCTURE REPAIRS
ABUTMENTS
WHITE COUNTY
SN 097-0052 (E.B.)



Structural Repair of Concrete ≤ 5"

FILE NAME =	USER NAME = halsteadtw	DESIGNED -	REVISED -
ct:\pw\work\p\dot\halsteadtw\d0344460\st	t-pln.dgn	DRAWN -	REVISED -
Default	PLOT SCALE = 8.0000' / in.	CHECKED -	REVISED -
	PLOT DATE = 10/7/2013	DATE -	REVISED -

STATE OF ILLINOIS
DEPARTMENT OF TRANSPORTATION

SUBSTRUCTURE REPAIRS
SN 097-0052 (EB)

SCALE: SHEET 21 OF 25 SHEETS STA. TO STA.

F.A.I. RTE.	SECTION	COUNTY	TOTAL SHEETS	SHEET NO.
64	*	WHITE	54	47
			CONTRACT NO. 78282	
ILLINOIS FED. AID PROJECT				

*(97-2-1)RS-1; BSMART 2012-1,2,3