

STATE OF ILLINOIS
DEPARTMENT OF TRANSPORTATION
DIVISION OF HIGHWAYS

**PROPOSED
HIGHWAY PLANS**

FAS ROUTE 1911 (OLD US 51)
SECTION 10B-1
JACKSON COUNTY
STRUCTURE REPLACEMENT
OLD US 51 OVER TRIBUTARY TO DRURY CREEK
SN 039-7118

C-99-006-14

PROJECT ACRS-1911(105)

F.A.S. RTE.	SECTION	COUNTY	TOTAL SHEETS	SHEET NO.
1911	10B-1	JACKSON	19	1
ILLINOIS			CONTRACT NO. 78385	

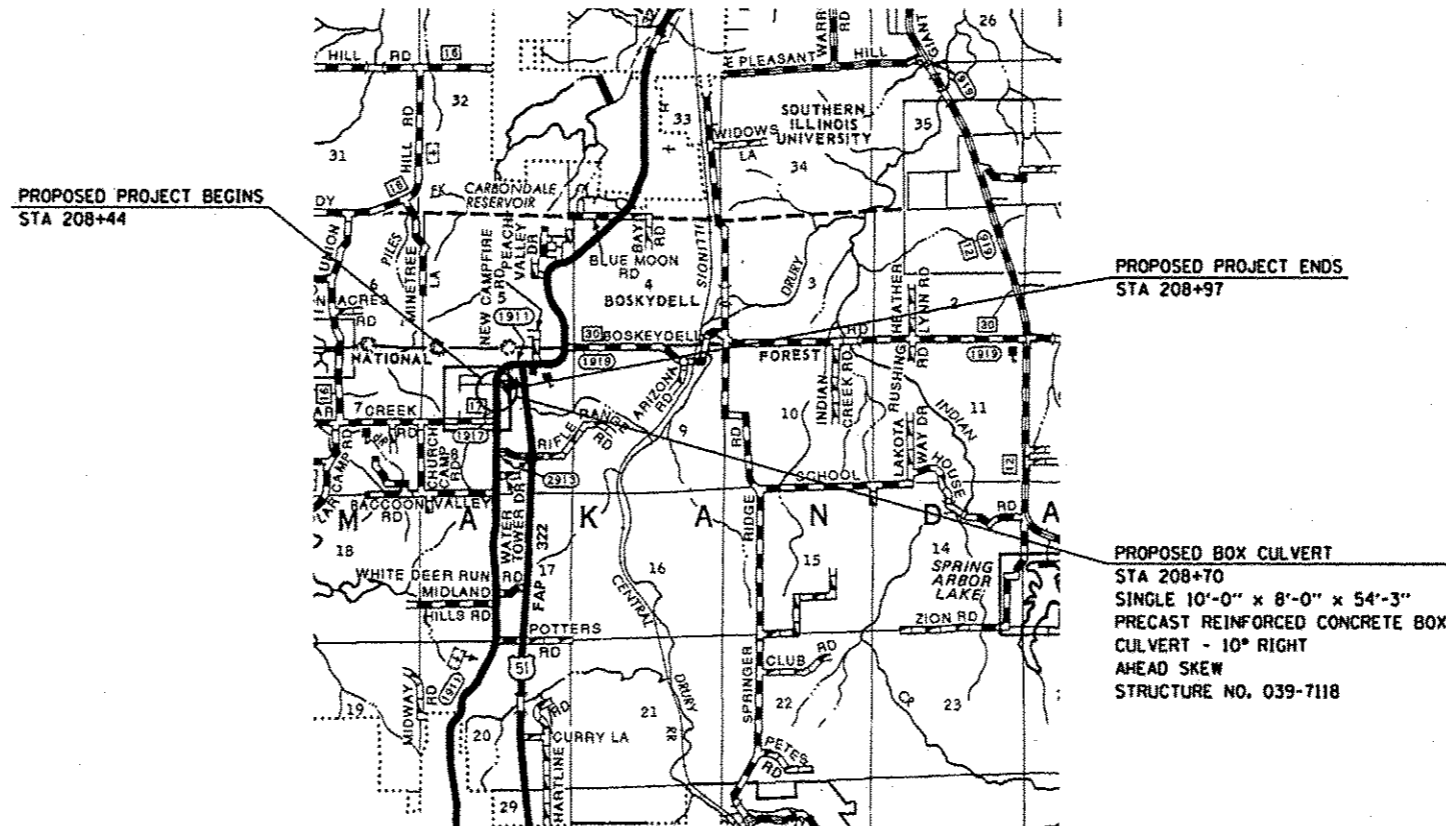
FOR INDEX OF SHEETS, SEE SHEET NO. 2
FOR SUMMARY OF QUANTITIES, SEE SHEET NO. 3-5

D-99-005-14



TRAFFIC DATA

2013 ADT = 2780
3.2% TRUCKS
POSTED SPEED 45 MPH



J.U.L.I.E.
JOINT UTILITY LOCATION INFORMATION FOR EXCAVATION
1-800-892-0123
OR 811

PROJECT ENGINEER: GRANT DETERDING (618)351-5226
PROJECT MANAGER: DAVID PICHE (618)351-5227

GROSS LENGTH = 53 FT.
NET LENGTH = 53 FT.

CONTRACT NO. 78385

STATE OF ILLINOIS
DEPARTMENT OF TRANSPORTATION
DIVISION OF HIGHWAYS

SUBMITTED October 16 2013

Jeffrey J. Ken
DEPUTY DIRECTOR OF HIGHWAYS, REGION ENGINEER

Dec 6 2013
John D. Baranzelli, PE
ENGINEER OF DESIGN AND ENVIRONMENT

Dec 6 2013
Omer Osman, PE
DIRECTOR OF HIGHWAYS, CHIEF ENGINEER

**PRINTED BY THE AUTHORITY
OF THE STATE OF ILLINOIS**

GENERAL NOTES

- 1) THE THICKNESS OF HOT-MIX ASPHALT MIXTURE SHOWN ON THE PLANS IS THE NOMINAL THICKNESS. DEVIATIONS FROM THE NOMINAL THICKNESS WILL BE PERMITTED WHEN SUCH DEVIATIONS OCCUR DUE TO IRREGULARITIES IN THE EXISTING SURFACE OR BASE ON WHICH THE HOT-MIX ASPHALT MIXTURE IS PLACED.
- 2) FACTORS USED FOR ESTIMATING PLAN QUANTITIES ARE AS FOLLOWS AND SHALL NOT BE USED FOR THE BASIS OF FINAL QUANTITIES:

ALL HOT MIX ASPHALT	2.016 TONS/CU YD
ALL AGGREGATE	2.05 TONS/CU YD
RIP RAP	1.50 TONS/CU YD
- 3) AT ALL LOCATIONS WHERE EXISTING HOT-MIX ASPHALT OR CONCRETE PAVEMENT JOINS AN EXISTING HOT-MIX ASPHALT OR CONCRETE PAVEMENT, A FULL DEPTH SAWED JOINT SHALL BE CONSTRUCTED. THE COST OF THIS JOINT WILL BE INCLUDED IN THE COST OF THE TYPE OF PAVEMENT BEING CONSTRUCTED.

COMMITMENTS: NO TREE CLEARING BETWEEN APRIL 1 AND SEPTEMBER 30

INDEX OF SHEETS

- | | |
|-------|---|
| 1 | COVER SHEET |
| 2 | INDEX OF SHEETS, GENERAL NOTES, STANDARDS, & MIXTURE REQUIREMENTS |
| 3-5 | SUMMARY OF QUANTITIES |
| 6 | SCHEDULES |
| 7 | PLAN - PROFILE SHEET |
| 8 | EROSION CONTROL PLAN & HMA SHOULDER DETAIL |
| 9 | ROW SHEET |
| 10 | GENERAL PLAN & ELEVATION |
| 11 | WINGWALL & APRON REINFORCEMENT DETAILS |
| 12 | HALF SIDE ELEVATION |
| 13 | CONCRETE WINGWALL AND APRON DETAILS / SECTION THRU BOX |
| 14 | DISTRICT STANDARDS |
| 15-19 | CROSS-SECTIONS |

STANDARDS

- | | |
|-----------|--|
| 000001-06 | STANDARD SYMBOLS, ABBREVIATIONS AND PATTERNS |
| 001001-02 | AREAS OF REINFORCEMENT BARS |
| 001006 | DECIMAL OF AN INCH AND OF A FOOT |
| 420001-07 | PAVEMENT JOINTS |
| 420601-05 | 24' PCC PAVEMENT |
| 420701-02 | PAVEMENT FABRIC |
| 630301-06 | SHOULDER WIDENING FOR TYPE 1 (SPECIAL) GUARDRAIL TERMINALS |
| 635006-03 | REFLECTOR AND TERMINAL MARKER PLACEMENT |
| 635011-02 | REFLECTOR MARKER AND MOUNTING DETAILS |
| 701001-02 | OFF-RD OPERATIONS, 2L, 2W, MORE THAN 15' AWAY |
| 701006-05 | OFF-RD OPERATIONS, 2L, 2W, 15' TO 24" FROM PAVEMENT EDGE |
| 701011-04 | OFF-RD MOVING OPERATIONS, 2L, 2W, DAY ONLY |
| 701201-04 | LANE CLOSURE, 2L, 2W, DAY ONLY |
| 701301-04 | LANE CLOSURE, 2L, 2W, SHORT TIME OPERATIONS |
| 701311-03 | LANE CLOSURE, 2L, 2W, MOVING OPERATIONS, DAY ONLY |
| 701901-03 | TRAFFIC CONTROL DEVICES |
| 780001-04 | TYPICAL PAVEMENT MARKINGS |
| BLR 21-9 | TYPICAL APPLICATION OF TRAFFIC CONTROL DEVICES FOR CONSTRUCTION ON RURAL LOCAL HIGHWAYS |
| BLR 22-7 | TYPICAL APPLICATION OF TRAFFIC CONTROL DEVICES FOR CONSTRUCTION ON RURAL LOCAL HIGHWAYS
2L, 2W, ROAD CLOSED TO THRU TRAFFIC |

MIXTURE REQUIREMENTS

LOCATION(S):	HOT-MIX ASPHALT SHOULDERS
MIXTURE USE(S):	HOT-MIX ASPHALT SHOULDERS, N30
AC/PG:	PG58-22
ABR % (MAX):	SEE BDE SPECIAL PROVISION
DESIGN AIR VOIDS:	2.0%, 30 GYRATION DESIGN
MIXTURE COMPOSITION: (GRADATION MIXTURE):	HMA SHOULDER
FRICTION AGGREGATE:	NONE

Prepared By: *Joe Zdaniewicz*
DISTRICT STUDIES & PLANS ENGINEER

Examined By: *[Signature]*
DISTRICT LAND ACQUISITION ENGINEER

Examined By: *Carrie Nelson*
DISTRICT PROGRAM DEVELOPMENT ENGINEER

Examined By: *[Signature]*
DISTRICT OPERATIONS ENGINEER

Examined By: *[Signature]*
DISTRICT PROJECT IMPLEMENTATION ENGINEER

Examined By: *[Signature]*
DISTRICT CONSTRUCTION ENGINEER

Examined By: *Bruce W. Phillips*
DISTRICT MATERIALS ENGINEER

FILE NAME *	USER NAME * dsterdingj	DESIGNED -	REVISED -	STATE OF ILLINOIS DEPARTMENT OF TRANSPORTATION	GENERAL NOTES, INDEX OF SHEETS, STANDARDS AND MIX REQUIREMENTS	F.A.S. RTE.	SECTION	COUNTY	TOTAL SHEETS	SHEET NO.	
c:\pwork\pwork\pwork\dsterdingj\0334903\	9354-039-ahs-pln.dgn	DRAWN -	REVISED -			1911	10B-1	JACKSON	19	2	
	PLOT SCALE = 100.0000' / 1"	CHECKED -	REVISED -			CONTRACT NO. 78385					
Default	PLOT DATE = 10/9/2013	DATE -	REVISED -			ILLINOIS FED. AID PROJECT					

SUMMARY OF QUANTITIES

CODE NUMBER	ITEM DESCRIPTION	UNIT	CONSTRUCTION TYPE CODE: 0040 FUNDING: 80% FED 20% STATE
28000400	PERIMETER EROSION BARRIER	FOOT	415
28100107	STONE RIPRAP, CLASS A4	SQ YD	130
28200200	FILTER FABRIC	SQ YD	130
42000500	PORTLAND CEMENT CONCRETE PAVEMENT 10"	SQ YD	154
42001200	PAVEMENT FABRIC	SQ YD	154
44000100	PAVEMENT REMOVAL	SQ YD	154
48203029	HOT-MIX ASPHALT SHOULDERS, 8"	SQ YD	285
50102400	CONCRETE REMOVAL	CU YD	104.4
50105220	PIPE CULVERT REMOVAL	FOOT	25.0
50800205	REINFORCEMENT BARS, EPOXY COATED	POUND	1,689
54003000	CONCRETE BOX CULVERTS	CU YD	32.4
54011008	PRECAST CONCRETE BOX CULVERTS 10' X 8'	FOOT	55.9
63000001	STEEL PLATE BEAM GUARDRAIL, TYPE A, 6 FOOT POSTS	FOOT	175.0
63100167	TRAFFIC BARRIER TERMINAL, TYPE 1 (SPECIAL) TANGENT	EACH	4.0

SUMMARY OF QUANTITIES

CODE NUMBER	ITEM DESCRIPTION	UNIT	CONSTRUCTION TYPE CODE: 0040 FUNDING: 80% FED 20% STATE
63200310	GUARDRAIL REMOVAL	FOOT	306.0
66600105	FURNISHING AND ERECTING RIGHT OF WAY MARKERS	EACH	16.0
67000400	ENGINEER'S FIELD OFFICE, TYPE A	CAL MO	3
67100100	MOBILIZATION	L SUM	1
70100450	TRAFFIC CONTROL AND PROTECTION, STANDARD 701201	L SUM	1
70101830	TRAFFIC CONTROL AND PROTECTION, STANDARD BLR 21	L SUM	1
70106800	CHANGEABLE MESSAGE SIGN	CAL MO	6
70300220	TEMPORARY PAVEMENT MARKING - LINE 4"	FOOT	1,020
* 78001110	PAINT PAVEMENT MARKING - LINE 4"	FOOT	1,020
* 78200410	GUARDRAIL MARKERS, TYPE A	EACH	8
* 78201000	TERMINAL MARKER - DIRECT APPLIED	EACH	4

* SPECIALTY ITEM

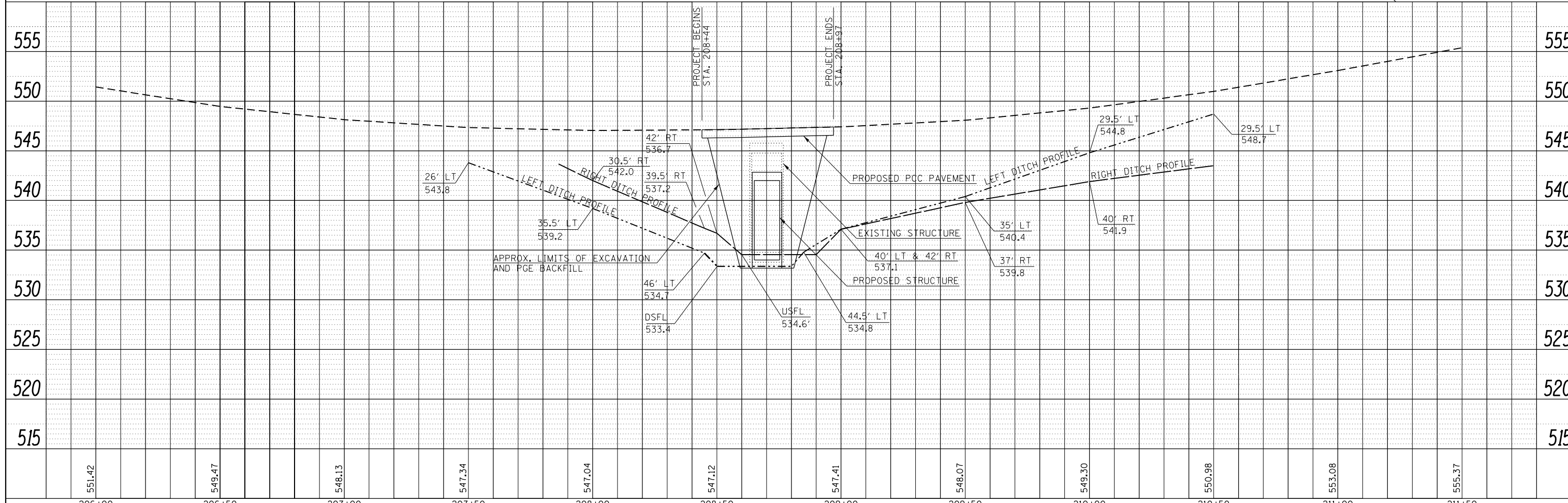
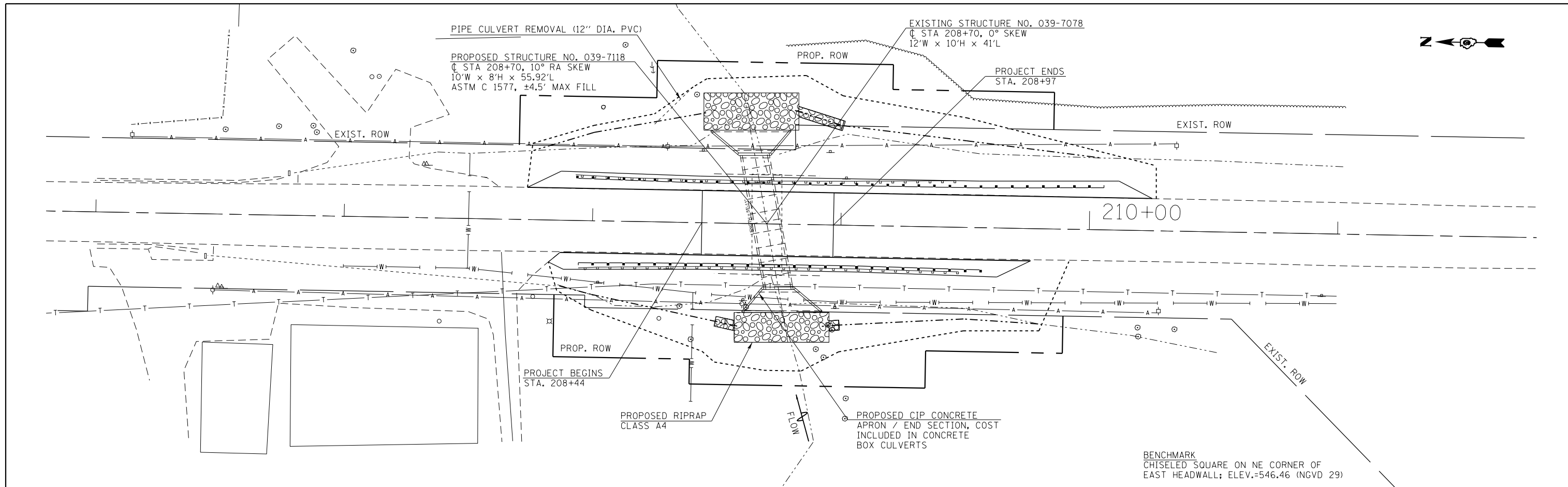
FILE NAME = c:\p\work\pilot\detdingg\10334983	USER NAME = detdingg 0354-039-sht-pln.dgn	DESIGNED -	REVISED -	STATE OF ILLINOIS DEPARTMENT OF TRANSPORTATION	SUMMARY OF QUANTITIES	F.A.S. RTE. 1911	SECTION 10B-1	COUNTY JACKSON	TOTAL SHEETS 19	SHEET NO. 5
Default	PLOT SCALE = 100.0000 ' / in. PLOT DATE = 10/16/2013	DRAWN -	REVISED -	SCALE: SHEET OF SHEETS STA. TO STA.		ILLINOIS FED. AID PROJECT		CONTRACT NO. 78385		

PAVING SCHEDULE				
STATION TO STATION	PAVEMENT REMOVAL	PCC PAVEMENT, 10"	PAVEMENT FABRIC	HMA SHOULDERS, 8"
	SQ YD	SQ YD	SQ YD	SQ YD
STA. 208+44 TO STA. 208+97	154	154	154	
LT. STA. 207+73.6 TO LT. STA. 208+43.1				44.0
LT. STA. 208+43.1 TO LT. STA. 209+55.6				71.9
LT. STA. 209+55.6 TO LT. STA. 210+25.1				44.0
RT. STA. 207+82.5 TO RT. STA. 208+44.6				41.5
RT. STA. 208+44.6 TO RT. STA. 209+07.1				39.9
RT. STA. 209+07.1 TO RT. STA. 209+76.6				44.0
TOTALS	154	154	154	285

GUARDRAIL SCHEDULE			
STATION TO STATION	GUARDRAIL REMOVAL	TRAFFIC BARRIER TERMINAL, TY 1 SPL TANGENT	SPBGR, TY A
	FOOT	EACH	FOOT
LT. STA. 207+93 TO LT. STA. 209+46	153		
RT. STA. 207+95 TO RT. STA. 209+48	153		
LT. STA. 207+93.1 TO LT. STA. 208+43.1		1	
LT. STA. 208+43.1 TO LT. STA. 209+55.6			112.5
LT. STA. 209+55.6 TO LT. STA. 210+05.6		1	
RT. STA. 207+94.6 TO RT. STA. 208+44.6		1	
RT. STA. 208+44.6 TO RT. STA. 209+07.1			62.5
RT. STA. 209+07.1 TO RT. STA. 209+57.1		1	
TOTALS	306	4	175

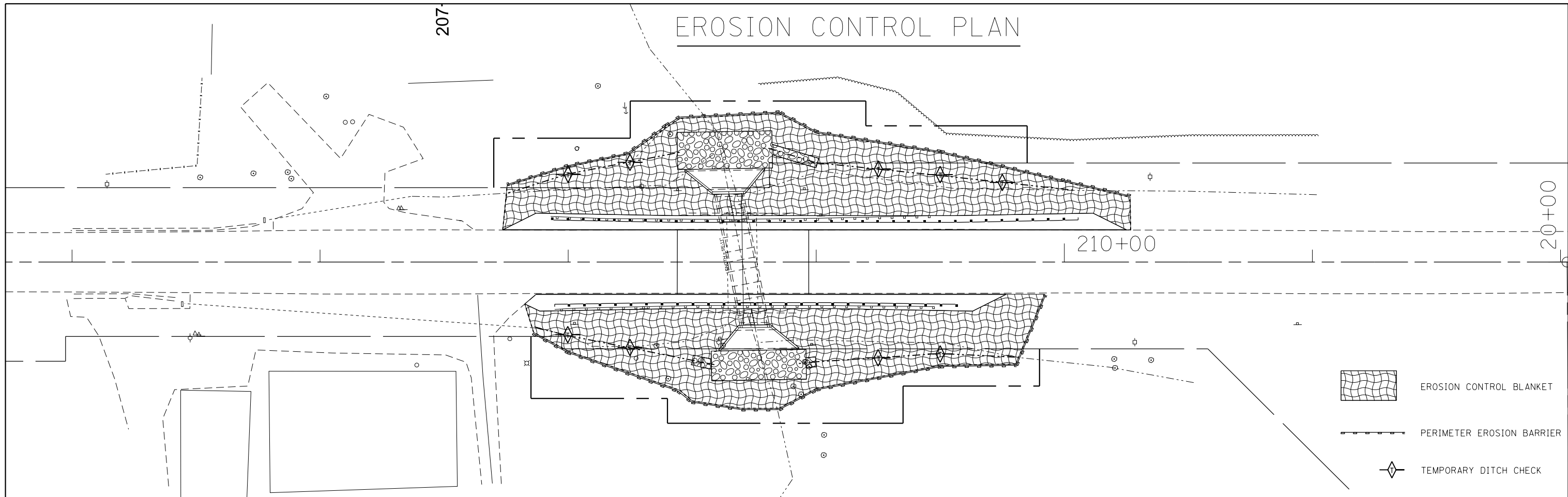
PLAN	SURVEYED	DATE
	PLOTTED	BY
	ALIGNED	
	CHECKED	
	FILED	
	NO.	
	NO.	
	NO.	

PROFILE	SURVEYED	DATE
	PLOTTED	BY
	GRADES	
	CHECKED	
	STRUCTURE	
	NOTATIONS	
	NO.	
	NO.	
	NO.	

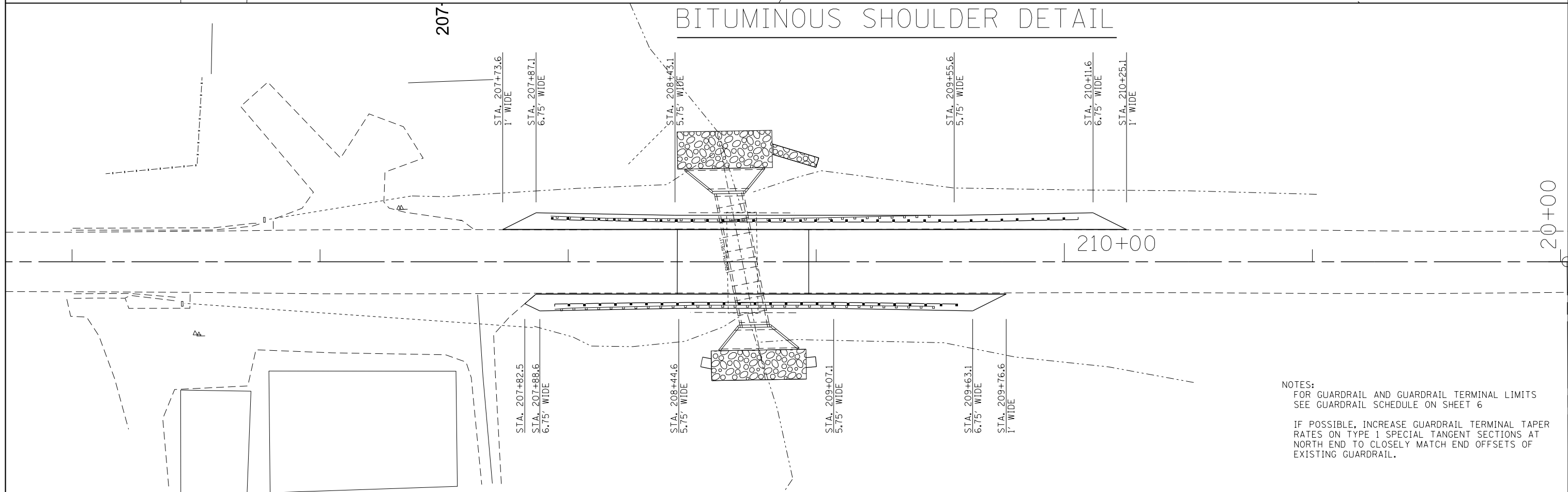


FILE NAME =	USER NAME = detersdggj	DESIGNED -	REVISED -	STATE OF ILLINOIS DEPARTMENT OF TRANSPORTATION	PLAN-PROFILE SCALE: SHEET 1 OF 1 SHEETS STA. 206+00 TO STA. 211+50	F.A.S. RTE.	SECTION	COUNTY	TOTAL SHEETS	SHEET NO.	
c:\pwork\pwork\detersdggj\d0334983\78854-039-sh1-pln.dgn	PLOT SCALE = 40.0000' / in.	DRAWN -	REVISED -			1911	10B-1	JACKSON	19	7	
Default	PLOT DATE = 10/16/2013	CHECKED -	REVISED -			CONTRACT NO. 78385					
		DATE -	REVISED -			ILLINOIS FED. AID PROJECT					

EROSION CONTROL PLAN



BITUMINOUS SHOULDER DETAIL



NOTES:
 FOR GUARDRAIL AND GUARDRAIL TERMINAL LIMITS
 SEE GUARDRAIL SCHEDULE ON SHEET 6
 IF POSSIBLE, INCREASE GUARDRAIL TERMINAL TAPER
 RATES ON TYPE 1 SPECIAL TANGENT SECTIONS AT
 NORTH END TO CLOSELY MATCH END OFFSETS OF
 EXISTING GUARDRAIL.

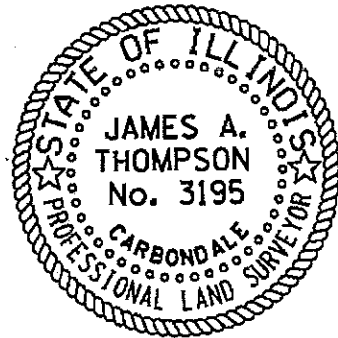
FILE NAME =	USER NAME = detersdngj	DESIGNED -	REVISED -
ei:\pw\work\p\dot\detersdngj\08334983\8354-039-sht-pln.dgn	8354-039-sht-pln.dgn	DRAWN -	REVISED -
Default	PLOT SCALE = 40.0000' / in.	CHECKED -	REVISED -
	PLOT DATE = 10/16/2013	DATE -	REVISED -

STATE OF ILLINOIS
 DEPARTMENT OF TRANSPORTATION

EROSION CONTROL PLAN & HMA SHOULDER DETAIL

SCALE: SHEET OF SHEETS STA. TO STA.

F.A.S. RTE.	SECTION	COUNTY	TOTAL SHEETS	SHEET NO.
1911	10B-1	JACKSON	19	8
CONTRACT NO. 78385				
ILLINOIS FED. AID PROJECT				



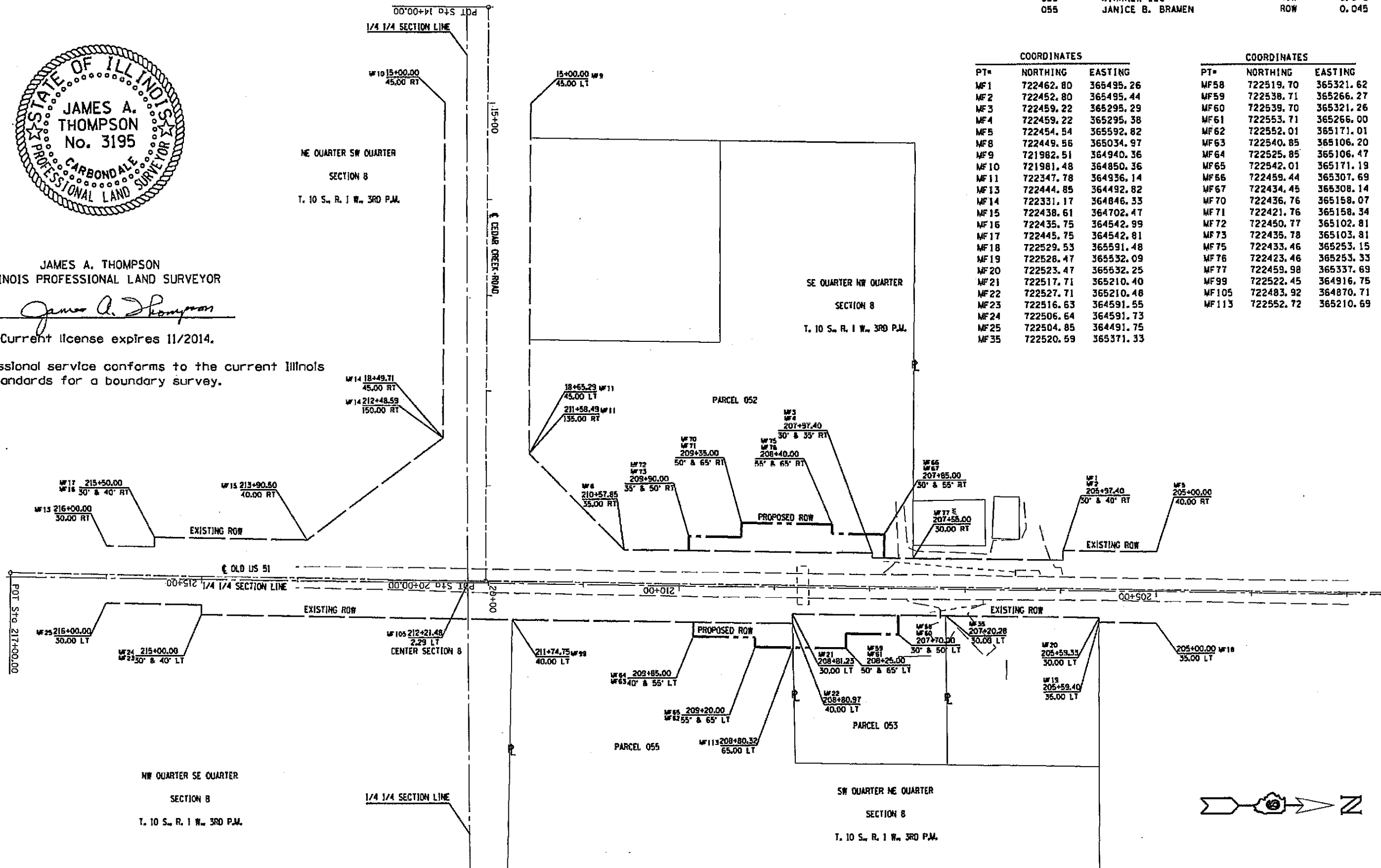
JAMES A. THOMPSON
ILLINOIS PROFESSIONAL LAND SURVEYOR

James A. Thompson
Current license expires 11/2014.

This professional service conforms to the current Illinois minimum standards for a boundary survey.

PARCEL	PROPERTY OWNER	PURPOSE	ACREAGE
052	RONALD G. & DONNA L. HERTTER	ROW	0.111
053	KIRKNEW LLC	ROW	0.070
055	JANICE B. BRAMEN	ROW	0.045

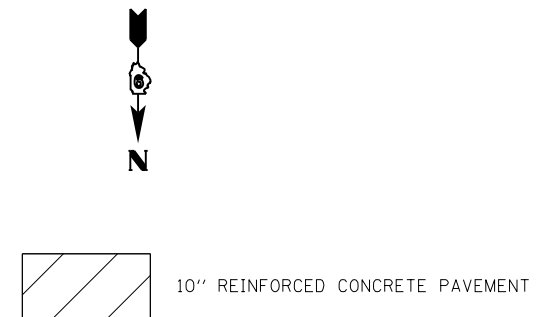
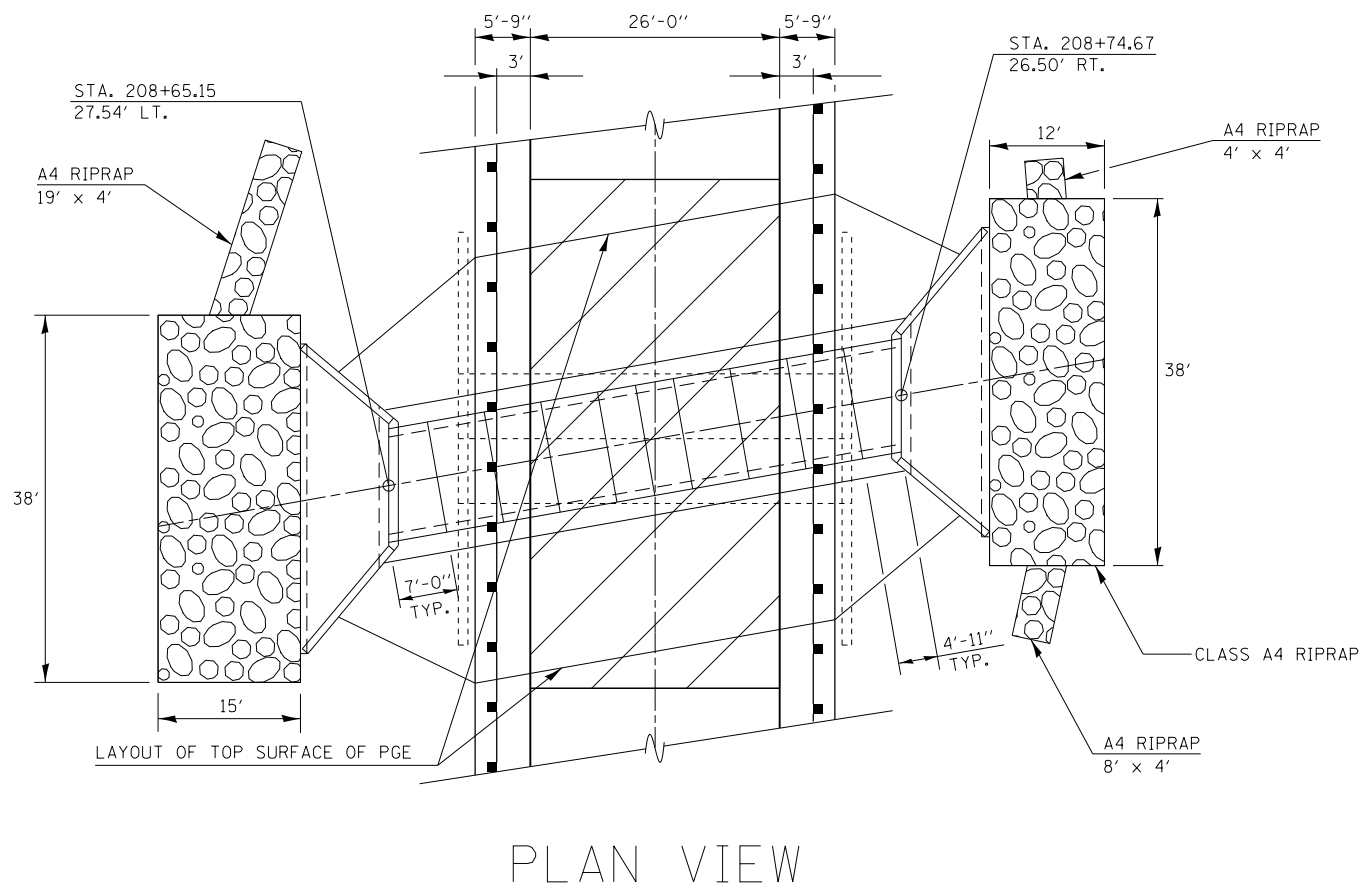
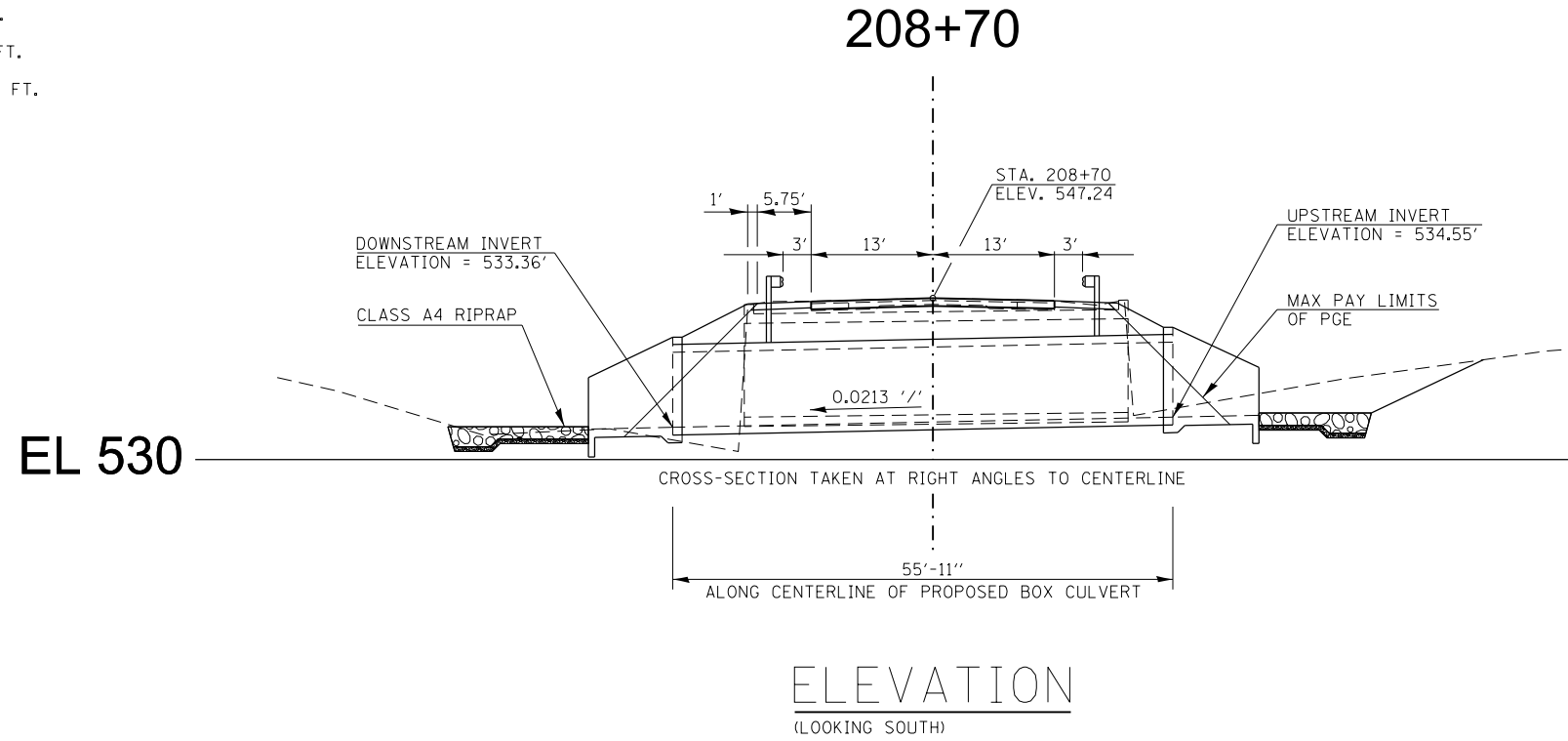
PT#	COORDINATES		PT#	COORDINATES	
	NORTHING	EASTING		NORTHING	EASTING
MF1	722462.80	365495.26	MF58	722519.70	365321.62
MF2	722452.80	365495.44	MF59	722538.71	365266.27
MF3	722459.22	365295.29	MF60	722539.70	365321.26
MF4	722459.22	365295.38	MF61	722553.71	365266.00
MF5	722454.54	365592.82	MF62	722552.01	365171.01
MF8	722449.56	365034.97	MF63	722540.85	365106.20
MF9	721982.51	364940.36	MF64	722525.85	365106.47
MF10	721981.48	364850.36	MF65	722542.01	365171.19
MF11	722347.78	364936.14	MF66	722459.44	365307.69
MF13	722444.85	364492.82	MF67	722434.45	365308.14
MF14	722331.17	364846.33	MF70	722436.76	365158.07
MF15	722438.61	364702.47	MF71	722421.76	365158.34
MF16	722435.75	364542.99	MF72	722450.77	365102.81
MF17	722445.75	364542.81	MF73	722435.78	365103.81
MF18	722529.53	365591.48	MF75	722433.46	365253.15
MF19	722528.47	365532.09	MF76	722423.46	365253.33
MF20	722523.47	365532.25	MF77	722459.98	365337.69
MF21	722517.71	365210.40	MF99	722522.45	364916.75
MF22	722527.71	365210.48	MF105	722483.92	364870.71
MF23	722516.63	364591.55	MF113	722552.72	365210.69
MF24	722506.64	364591.73			
MF25	722504.85	364491.75			
MF35	722520.59	365371.33			



FILE NAME	USER NAME	DESIGNED	REVISED	STATE OF ILLINOIS DEPARTMENT OF TRANSPORTATION	R-99-006-12 RIGHT OF WAY PLANS/SBI RTE 2 (OLD 51)	SCALE: 1" = 100'	SHEET	OF	SHEETS	STA. 205+00.00 TO STA. 216+00.00	P.A. RTE.	SECTION	COUNTY	TOTAL SHEETS	SHEET NO.	
#FILE#		DRAWN	REVISED								OLD 51	108-1	JACKSON	19	9	
FLOT SCALE	#SCALE#	CHECKED	REVISED								CONTRACT NO. 18264			ILLINOIS FED. AID PROJECT		
#MODELNAME#		DATE	REVISED													

HYDRAULIC DATA

DRAINAGE AREA = 0.35 SQ. MI.
 DESIGN WATERWAY OPENING = 62 SQ. FT.
 DESIGN DISCHARGE = 480 CFS
 DESIGN HEADWATER ELEVATION = 540.7 FT.
 100 YR. DISCHARGE = 670 CFS
 100 YR. HEADWATER ELEVATION = 542.44 FT.
 OVERTOPPING > 500 YR. = 1045 CFS



NOTE: EARTH EXCAVATION REQUIRED FOR REMOVAL OF THE EXISTING CULVERT AND PLACEMENT OF THE PROPOSED STRUCTURE AND PGE IS ASSUMED TO BE SUITABLE FOR USE AS FILL IN THE FINAL EARTH SLOPES.

SUGGESTED MAKE-UP OF PRE-CAST SECTIONS
 6 - 6' LONG SECTIONS
 2 - 4' LONG SECTIONS
 2 - SECTIONS FORMED AT A 10° SKEW
 ASSEMBLED LENGTH - 55'-11" ALONG CL OF CULVERT

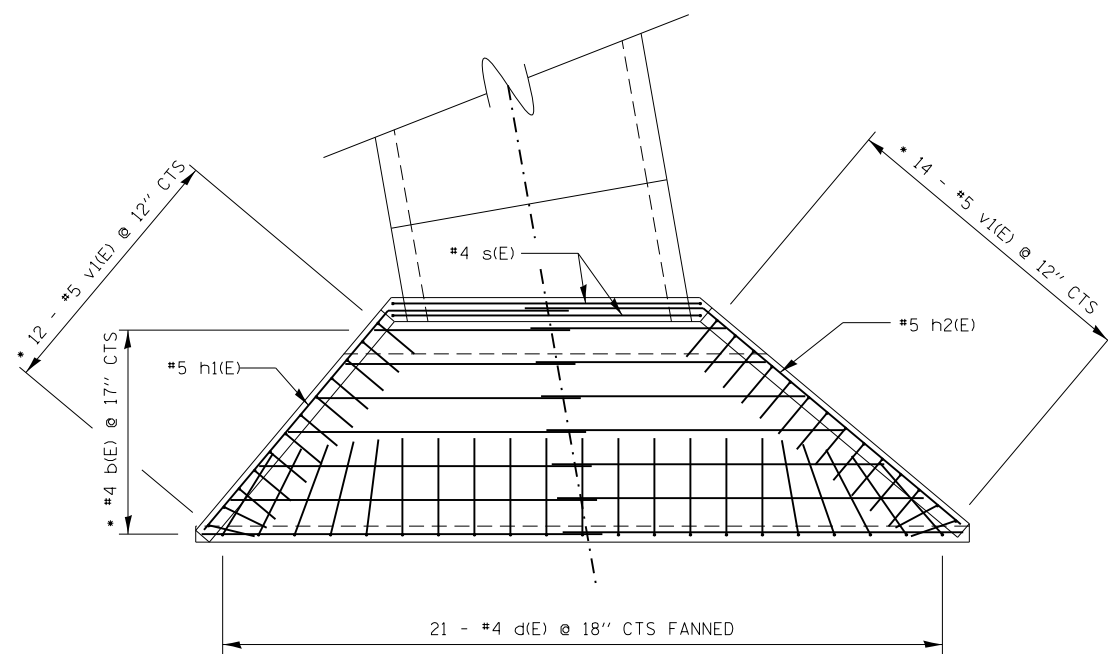
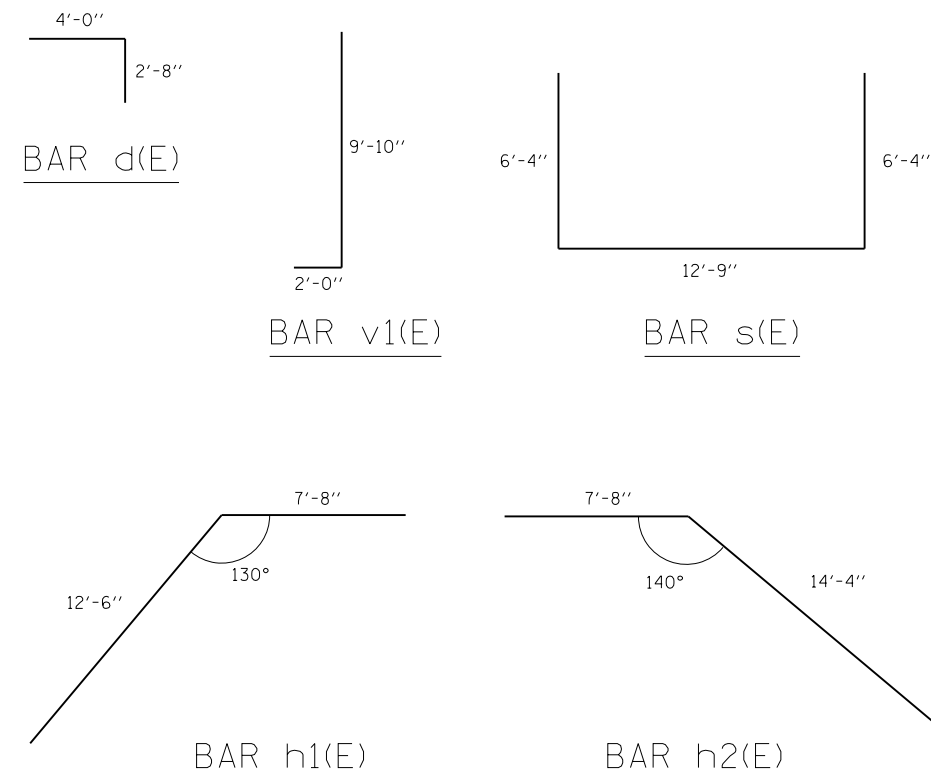
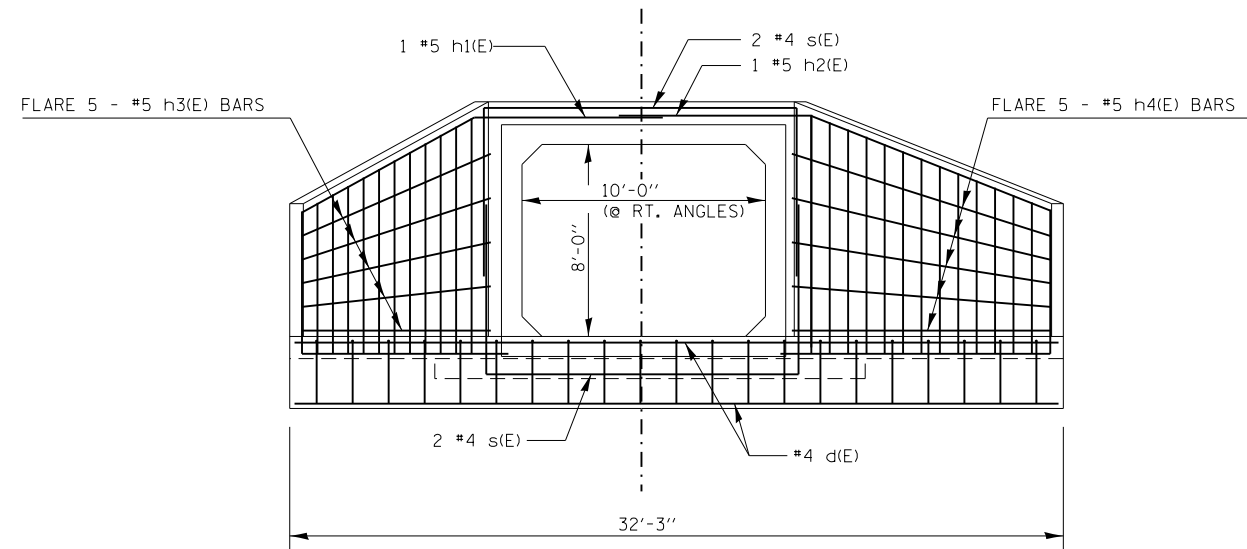
FILE NAME =	USER NAME = detersdngj	DESIGNED -	REVISED -
ct:\pw\work\p\dot\detersdngj\d0334983\	8354-039-sht-pln.dgn	DRAWN -	REVISED -
Default	PLOT SCALE = 20.0000' / in.	CHECKED -	REVISED -
	PLOT DATE = 10/16/2013	DATE -	REVISED -

STATE OF ILLINOIS
 DEPARTMENT OF TRANSPORTATION

GENERAL PLAN & ELEVATION

SCALE: SHEET OF SHEETS STA. TO STA.

F.A.S. RTE.	SECTION	COUNTY	TOTAL SHEETS	SHEET NO.
1911	10B-1	JACKSON	19	10
			78385	
ILLINOIS FED. AID PROJECT				



BILL OF MATERIAL

BAR	No.	SIZE	LENGTH	SHAPE
b(E)	32	#4	16'-10"	—
d(E)	42	#4	6'-8"	U
h1(E)	2	#5	20'-2"	∕
h2(E)	2	#5	22'-0"	∖
h3(E)	10	#5	12'-3"	—
h4(E)	10	#5	14'-3"	—
s(E)	8	#4	25'-5"	U
v1(E)	52	#5	11'-10"	J
CONCRETE BOX CULVERTS			CU. YD.	32.4
REINFORCEMENT BARS EPOXY COATED			POUND	1,689

DESIGN STRESSES

$f_y = 60,000$ psi
 $f'_c = 3,500$ psi

MINIMUM BAR LAP

#4 = 1'-8"
 #5 = 2'-2"

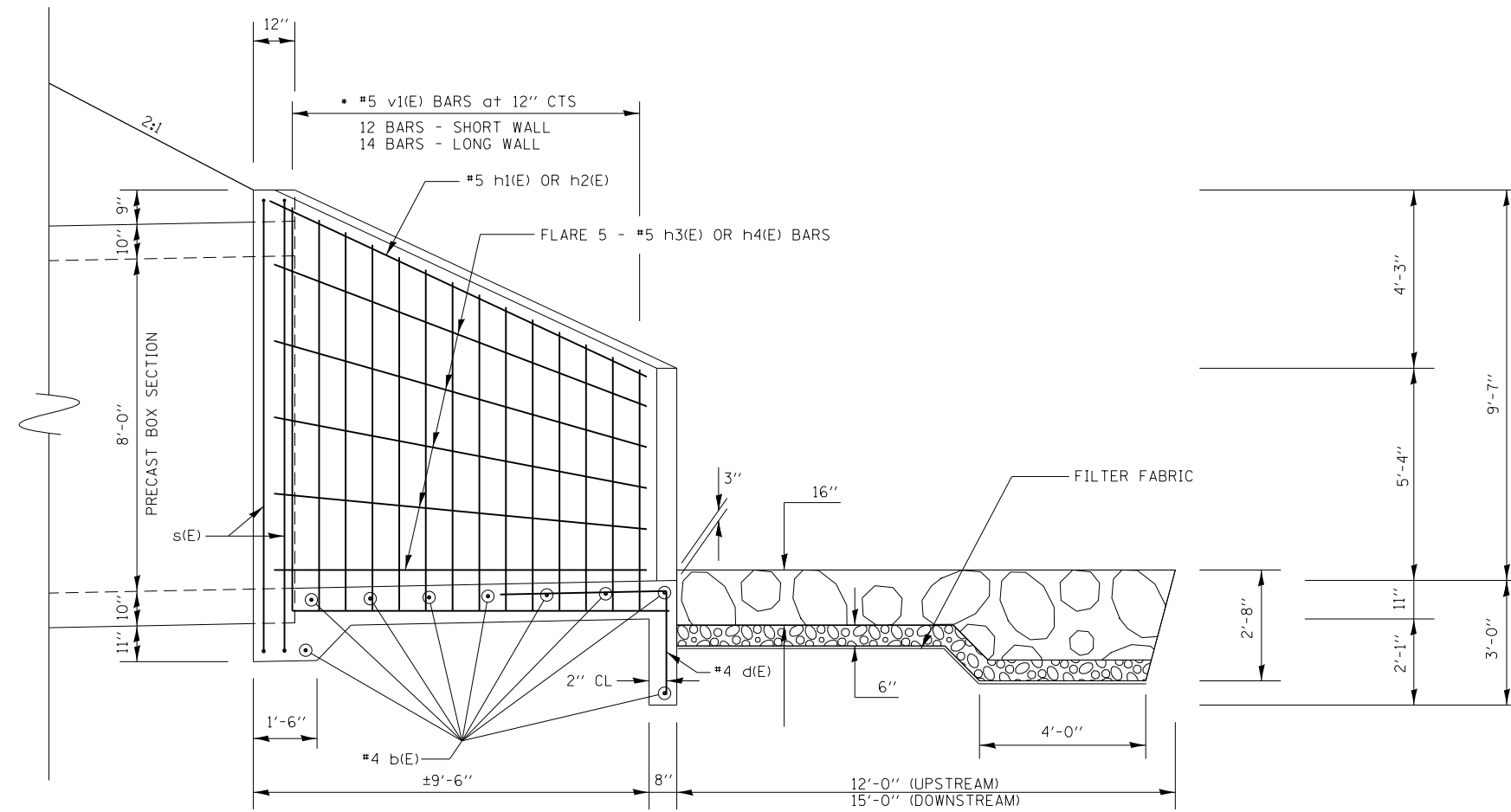
NOTE: BILL OF MATERIAL SCHEDULE IS TOTAL FOR BOTH ENDS

• CUT OR BEND TO FIT IN FIELD

CONCRETE WINGWALL AND APRON REINFORCEMENT DETAILS

(TYPICAL EACH END)

FILE NAME =	USER NAME = detersngj	DESIGNED -	REVISED -	STATE OF ILLINOIS DEPARTMENT OF TRANSPORTATION	CONCRETE WINGWALL & APRON REINFORCEMENT DETAILS	F.A.S. RTE.	SECTION	COUNTY	TOTAL SHEETS	SHEET NO.
et:\pw\work\p\idot\detersngj\d0334983\	8354-039-sht-pln.dgn	DRAWN -	REVISED -			1911	10B-1	JACKSON	19	11
Default	PLOT SCALE = 8.0000' / in.	CHECKED -	REVISED -			CONTRACT NO. 78385				
	PLOT DATE = 10/16/2013	DATE -	REVISED -			ILLINOIS FED. AID PROJECT				



HALF SIDE ELEVATION

(AT RT ANGLES TO Φ)

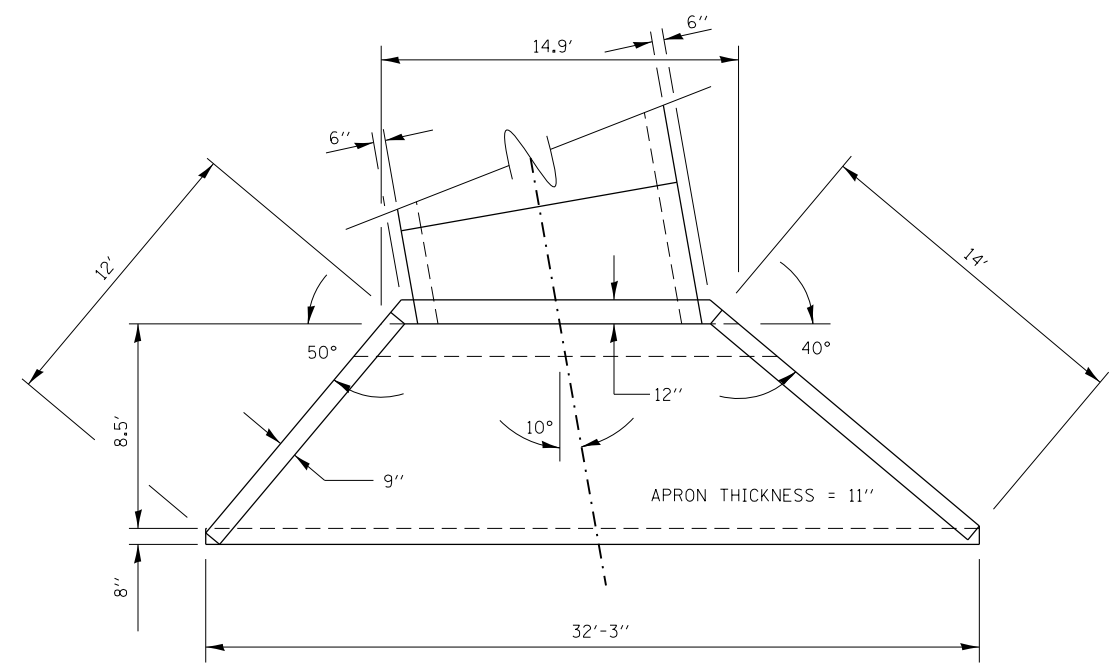
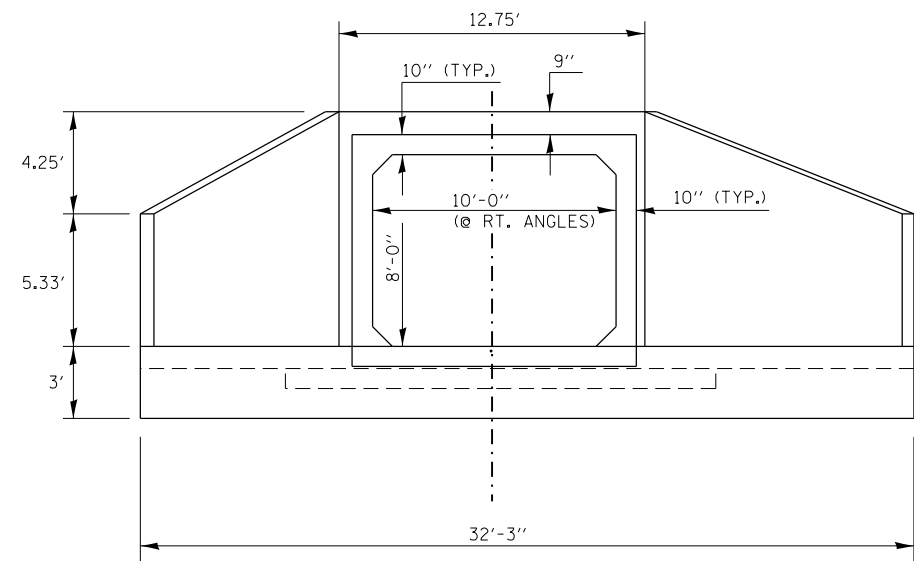
FILE NAME =	USER NAME = detersingj	DESIGNED -	REVISED -
ct:\pw\work\p\dot\detersingj\d0334983\	8354-039-sht-pln.dgn	DRAWN -	REVISED -
Default	PLOT SCALE = 4.0000' / in.	CHECKED -	REVISED -
	PLOT DATE = 10/16/2013	DATE -	REVISED -

STATE OF ILLINOIS
DEPARTMENT OF TRANSPORTATION

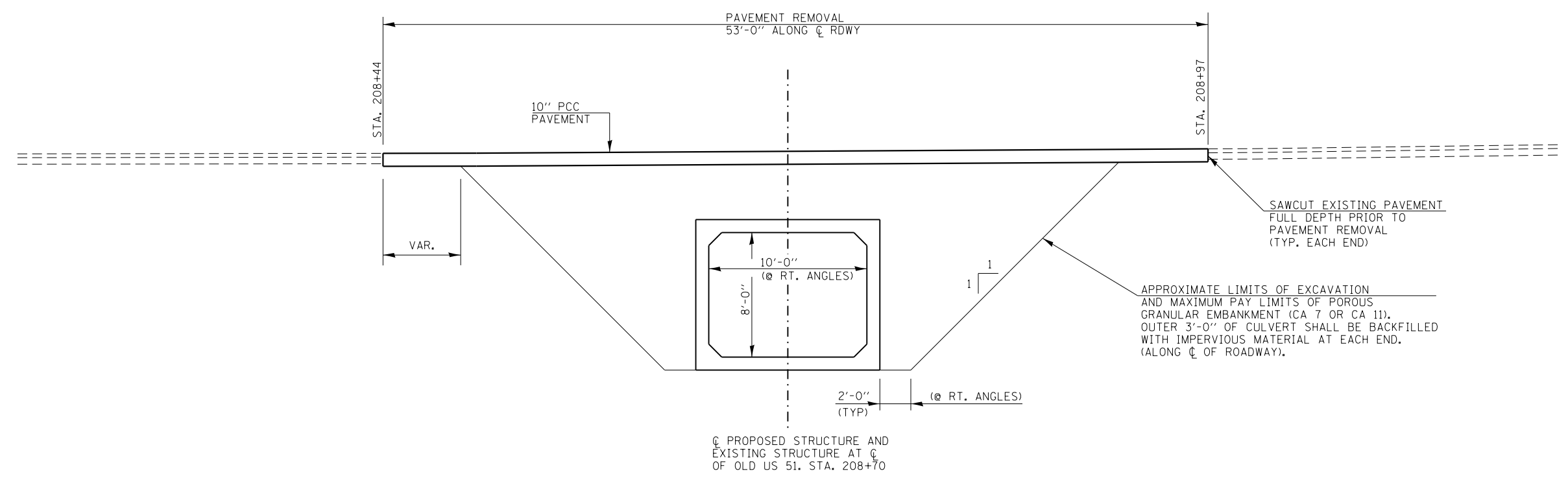
HALF SIDE ELEVATION

SCALE: SHEET OF SHEETS STA. TO STA.

F.A.S RTE.	SECTION	COUNTY	TOTAL SHEETS	SHEET NO.
1911	10B-1	JACKSON	19	12
			78385	
ILLINOIS FED. AID PROJECT				



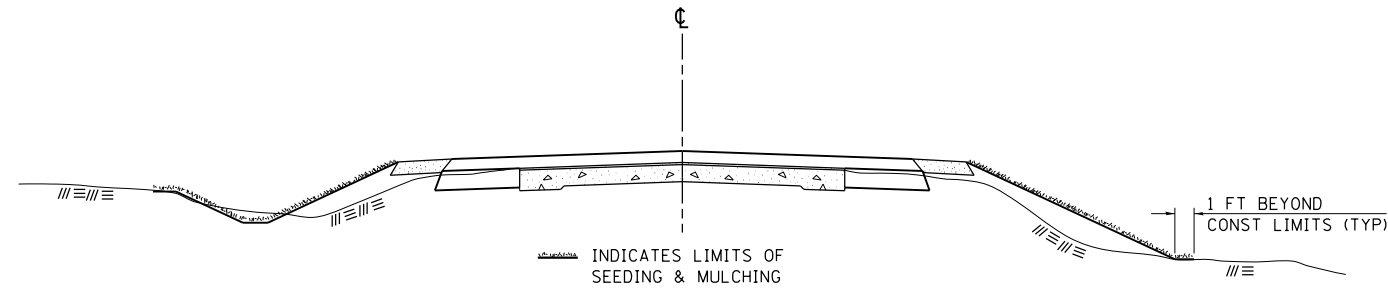
CONCRETE WINGWALL AND APRON DETAILS
(TYPICAL EACH END)



SECTION THRU BOX

FILE NAME =	USER NAME = detersdngg	DESIGNED -	REVISED -	STATE OF ILLINOIS DEPARTMENT OF TRANSPORTATION	CONCRETE WINGWALL & APRON DETAILS /SECTION THRU BOX	F.A.S. RTE.	SECTION	COUNTY	TOTAL SHEETS	SHEET NO.	
ct:\pw\work\p\id\dot\detersdngg\ad8334983\8354-039-sht-pln.dgn	PLOT SCALE = 8.0000' / in.	DRAWN -	REVISED -			1911	10B-1	JACKSON	19	13	
Default	PLOT DATE = 10/16/2013	CHECKED -	REVISED -			CONTRACT NO. 78385					
		DATE -	REVISED -			SCALE:	SHEET	OF	SHEETS	STA.	TO

SEEDING & MULCHING



GENERAL NOTES

IN GENERAL, ALL EARTH SURFACES DISTURBED DURING CONSTRUCTION OPERATIONS SHALL BE SEEDED AND MULCHED UPON COMPLETION OF ALL GRADING OPERATIONS.

FERTILIZER NUTRIENTS AND LIMESTONE SHALL BE APPLIED TO ALL SEEDED AREAS.

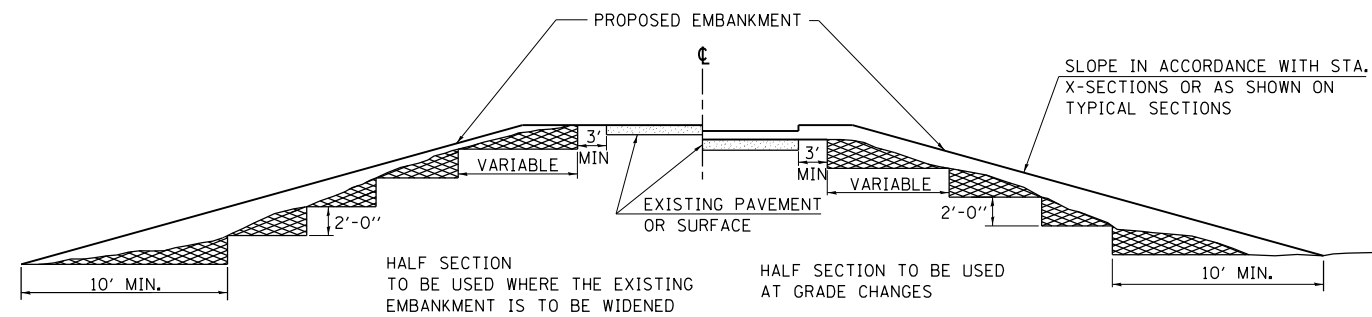
THE RATES OF APPLICATION OF FERTILIZER, MULCH AND LIMESTONE SHALL BE AS SPECIFIED IN THE SPECIAL PROVISIONS.

SECTIONS 250 AND 251 OF THE STANDARD SPECIFICATIONS SHALL GOVERN THIS WORK EXCEPT AS SPECIFIED HEREIN OR AS NOTED IN THE SPECIAL PROVISIONS.

REVISIONS	
REDRAWN	2-15-89
REVISED	8-15-94
REVISED	6-3-99
REVISED	3-27-08

STD. 9-12

TYPICAL CROSS SECTION SHOWING STEP CONSTRUCTION ON EXISTING FILL



MATERIAL TO BE REMOVED AND REPLACED IN THE EMBANKMENT IN ACCORDANCE WITH ART. 205.04 OF THE STANDARD SPECIFICATION. COST TO BE INCLUDED IN THE VARIOUS ITEMS OF EXCAVATION AND NO ADDITIONAL COMPENSATION WILL BE ALLOWED BECAUSE OF THIS WORK.

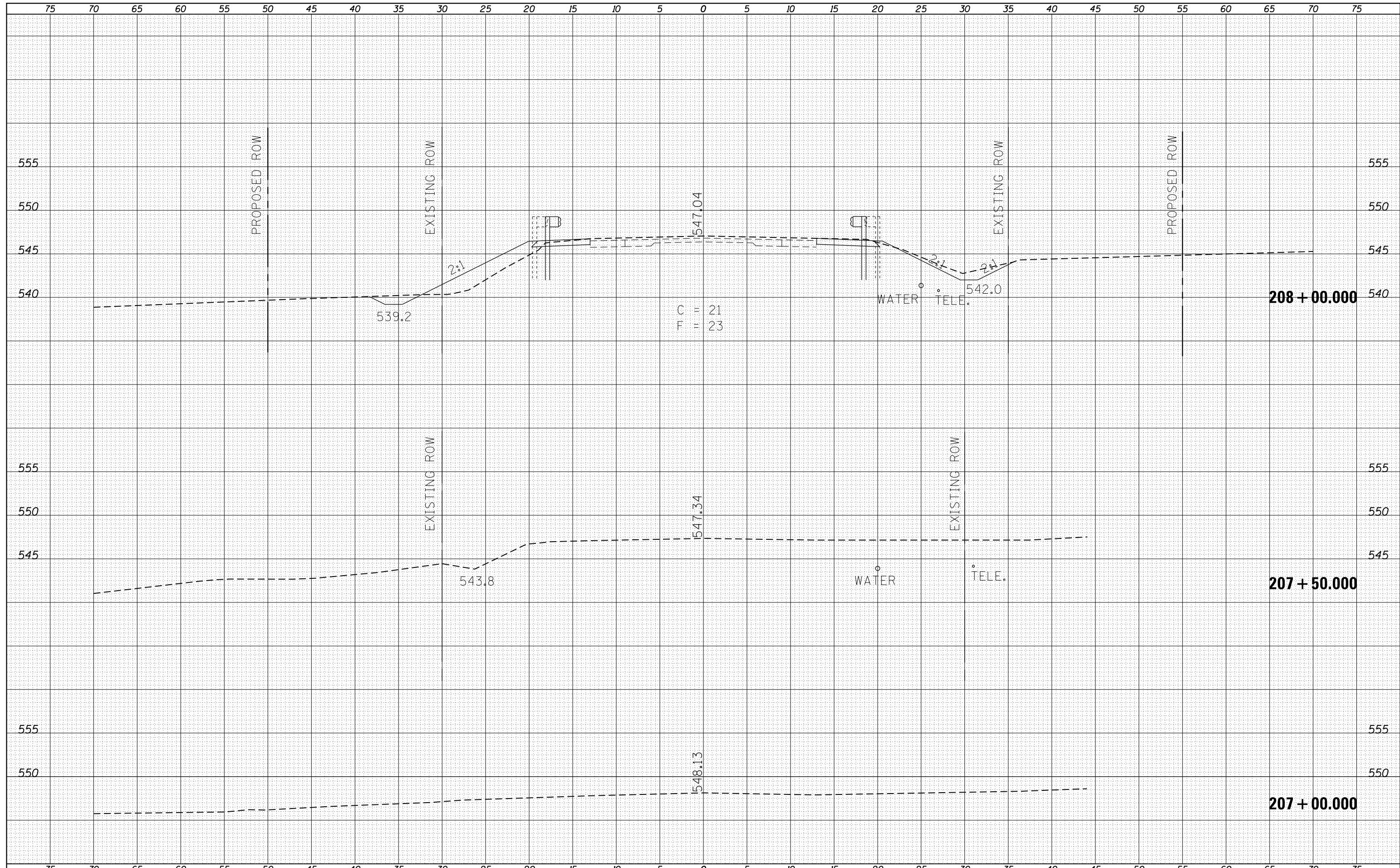
REVISIONS	
REDRAWN	2-15-89
REVISED	8-15-94
CHECKED	6-3-99
RESIZED	5-7-08

STD. 9-16

FILE NAME =	USER NAME = detersingj	DESIGNED -	REVISED -	STATE OF ILLINOIS DEPARTMENT OF TRANSPORTATION	DISTRICT STANDARDS	F.A.S. RTE.	SECTION	COUNTY	TOTAL SHEETS	SHEET NO.
ct:\pw\work\p\idot\detersingj\d0334983\	8354-039-sht-pln.dgn	DRAWN -	REVISED -			1911	10B-1	JACKSON	19	14
Default	PLOT SCALE = 100.0000' / in.	CHECKED -	REVISED -			CONTRACT NO. 78385		ILLINOIS FED. AID PROJECT		
	PLOT DATE = 10/16/2013	DATE -	REVISED -			SCALE:	SHEET	OF	SHEETS	STA. TO STA.

DATE	
BY	
FINAL SURVEY	SURVEYED
NOTE BOOK	PLOTTED
NO.	TEMPLATE
	AREAS
	CHECKED

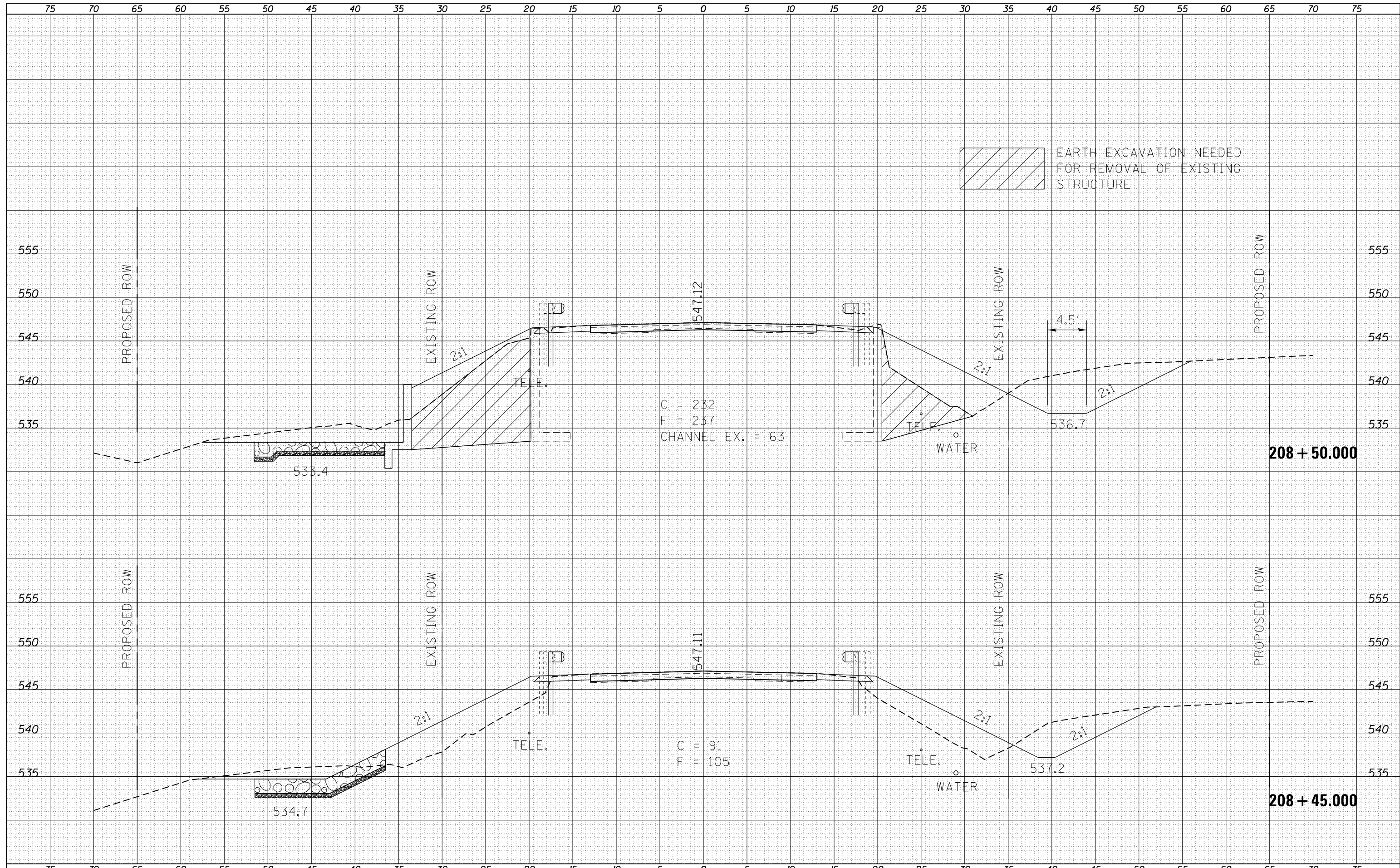
DATE	
BY	
ORIGINAL SURVEY	SURVEYED
NOTE BOOK	PLOTTED
NO.	TEMPLATE
	AREAS
	CHECKED



FILE NAME =	USER NAME = deterdingj	DESIGNED -	REVISED -	STATE OF ILLINOIS DEPARTMENT OF TRANSPORTATION	CROSS-SECTIONS				F.A.S. RTE.	SECTION	COUNTY	TOTAL SHEETS	SHEET NO.		
es:\pw_work\pwidot\deterdingj\d0334983\78354-089-shr-x.s.dgn		DRAWN -	REVISED -		SCALE:	SHEET	OF	SHEETS	STA. 207+00.000	TO STA. 208+00.000	1911	10B-1	JACKSON	19	15
Default		PLOT SCALE = 10.0000' / in.	CHECKED -		REVISED -	CONTRACT NO. 78385									
		PLOT DATE = 10/16/2013	DATE -		REVISED -	ILLINOIS FED. AID PROJECT									

DATE	
BY	
NO.	
FINISHED SURVEY	
PLOTTED TEMPLATE	
NOTE BOOK AREAS CHECKED	

DATE	
BY	
NO.	
ORIGINAL SURVEY	
PLOTTED TEMPLATE	
NOTE BOOK AREAS CHECKED	



FILE NAME =
 c:\pwork\pwork\deterdingg\d0334983\78354-089-shr-x.s.dgn

USER NAME = deterdingg
 PLOT SCALE = 10.0000' / in.
 PLOT DATE = 10/16/2013

DESIGNED -
 DRAWN -
 CHECKED -
 DATE -

REVISED -
 REVISED -
 REVISED -
 REVISED -

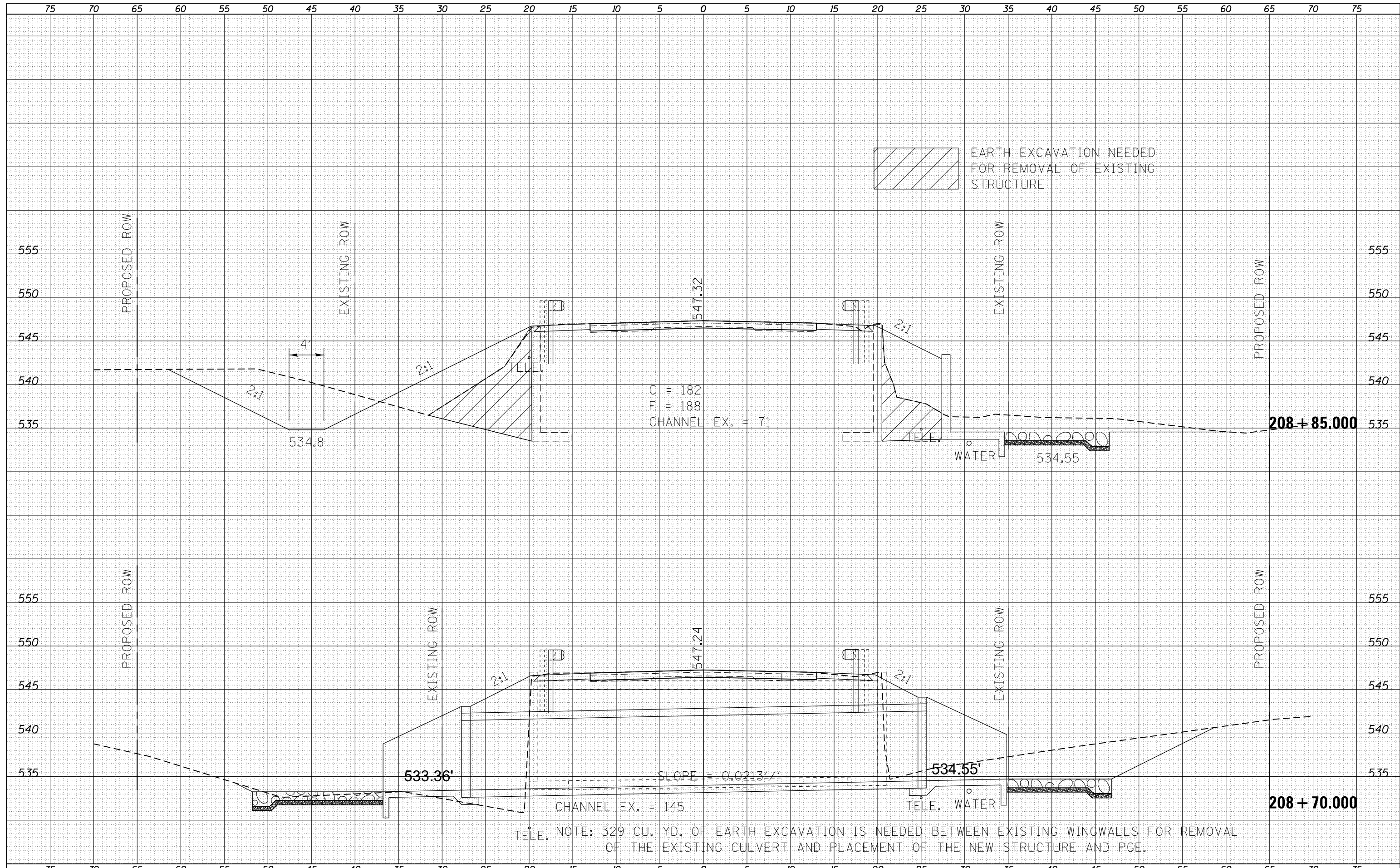
**STATE OF ILLINOIS
 DEPARTMENT OF TRANSPORTATION**

CROSS-SECTIONS
 SCALE: SHEET OF SHEETS STA. 208+45.000 TO STA. 208+50.000

F.A.S. RTE.	SECTION	COUNTY	TOTAL SHEETS	SHEET NO.
1911	10B-1	JACKSON	19	16
CONTRACT NO. 78385				
ILLINOIS FED. AID PROJECT				

DATE	
BY	
FINAL SURVEY	
SURVEYED	
PLOTTED	
TEMPLATE	
NOTE BOOK	
AREAS CHECKED	
AREAS CHECKED	
NO.	

DATE	
BY	
ORIGINAL SURVEY	
SURVEYED	
PLOTTED	
TEMPLATE	
NOTE BOOK	
AREAS CHECKED	
AREAS CHECKED	
NO.	



FILE NAME =
 c:\pw_work\pwidot\deterdingg\d0334983\78354-089-sh1-x.s.dgn
 Default

USER NAME = deterdingg
 DESIGNED -
 DRAWN -
 CHECKED -
 DATE - 10/16/2013

REVISED -
 REVISED -
 REVISED -
 REVISED -

**STATE OF ILLINOIS
 DEPARTMENT OF TRANSPORTATION**

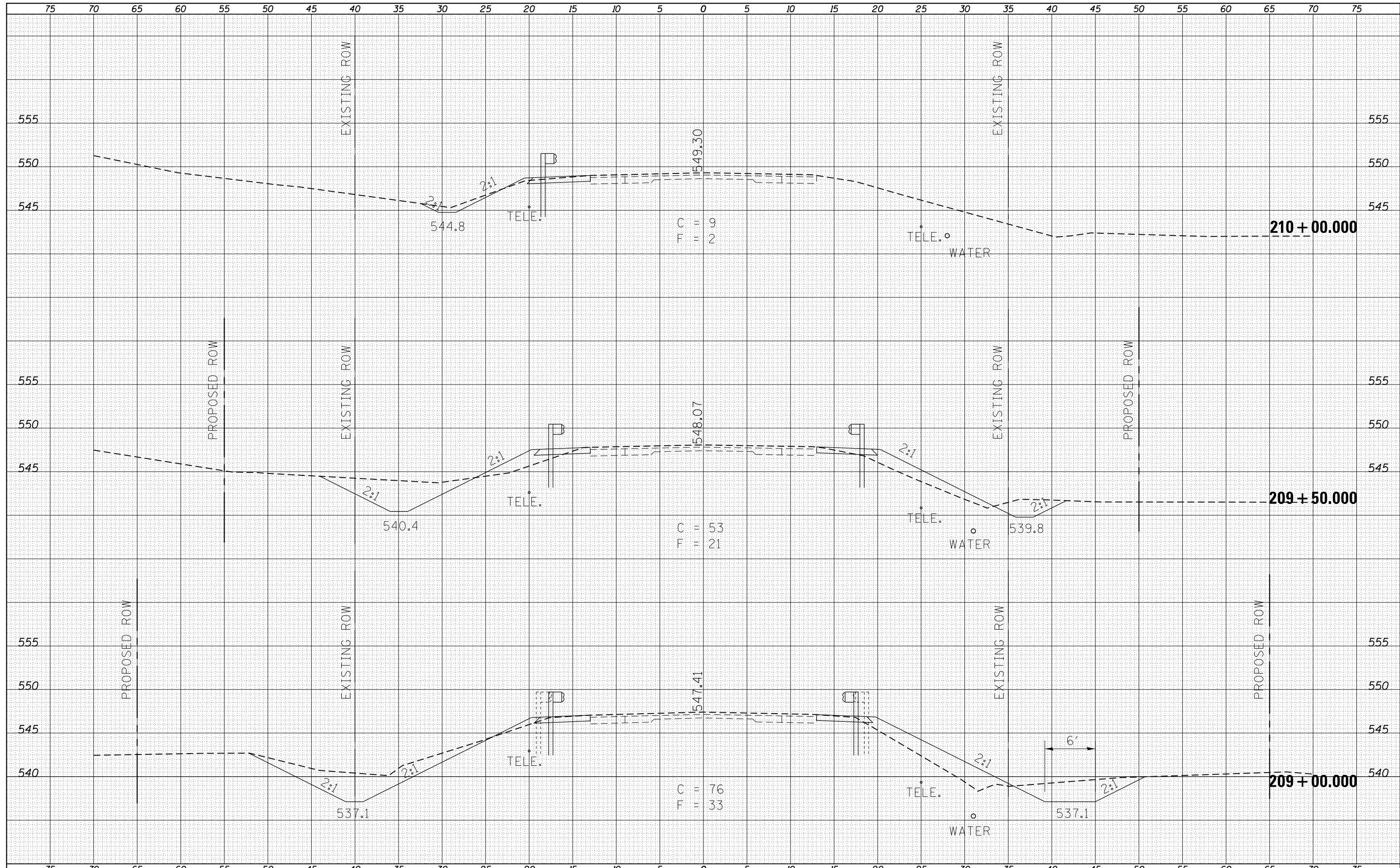
CROSS-SECTIONS

SCALE: SHEET OF SHEETS STA. 208+70.000 TO STA. 208+85.000

F.A.S RTE.	SECTION	COUNTY	TOTAL SHEETS	SHEET NO.
1911	10B-1	JACKSON	19	17
CONTRACT NO. 78385				
ILLINOIS FED. AID PROJECT				

DATE	
BY	
FINAL SURVEY	SURVEYED
NOTE BOOK	PLOTTED
NO.	TEMPLATE
	AREAS
	CHECKED

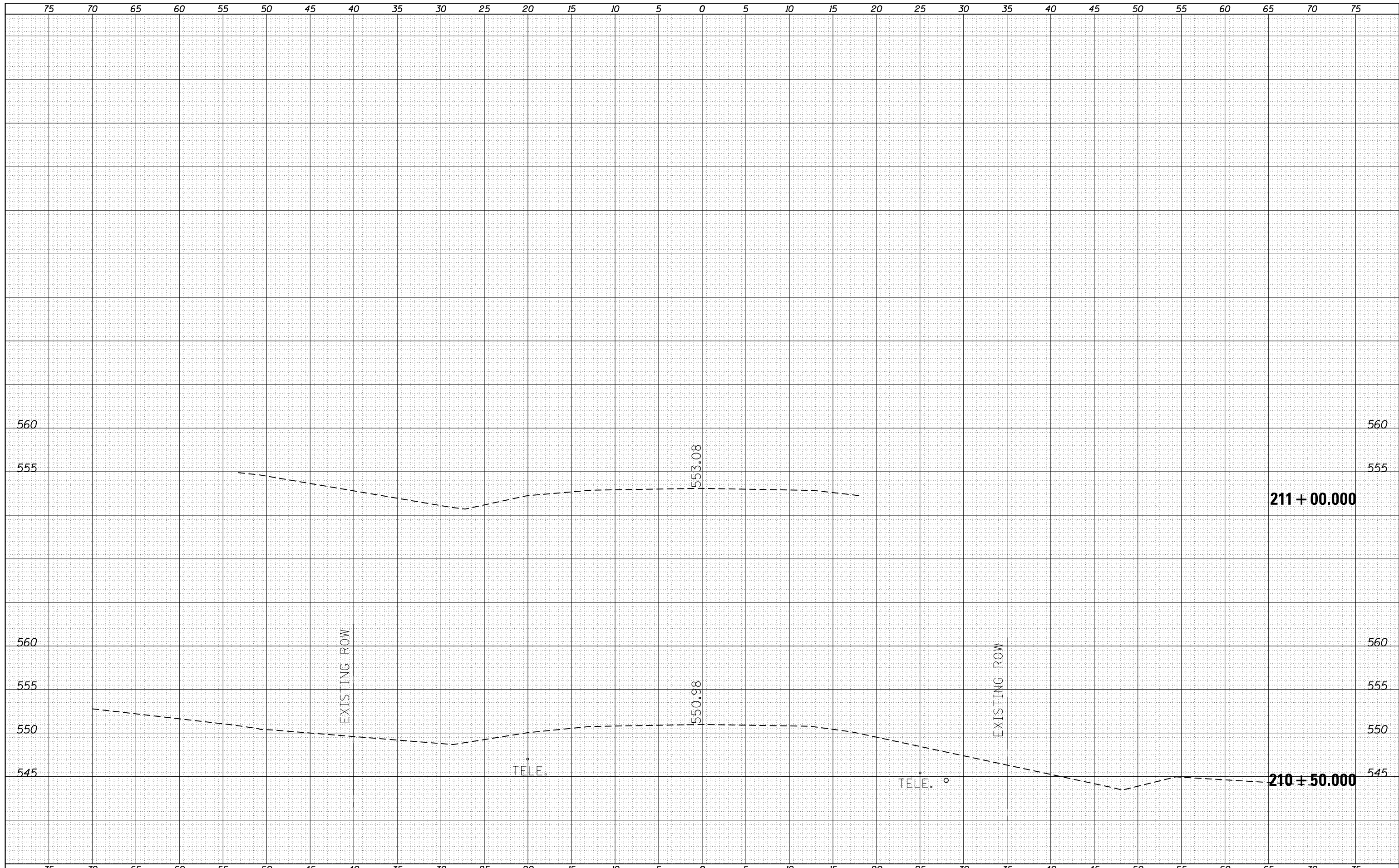
DATE	
BY	
ORIGINAL SURVEY	SURVEYED
NOTE BOOK	PLOTTED
NO.	TEMPLATE
	AREAS
	CHECKED



FILE NAME =	USER NAME = deterdinggj	DESIGNED -	REVISED -	STATE OF ILLINOIS DEPARTMENT OF TRANSPORTATION	CROSS-SECTIONS			F.A.S. RTE.	SECTION	COUNTY	TOTAL SHEETS	SHEET NO.
es:\pw_work\pwidot\deterdinggj\d0334983\78354-089-shr-x.s.dgn		DRAWN -	REVISED -		1911	10B-1	JACKSON	19	18			
Default	PLOT SCALE = 10.0000' / in.	CHECKED -	REVISED -		CONTRACT NO. 78385							
	PLOT DATE = 10/16/2013	DATE -	REVISED -		SCALE:	SHEET	OF	SHEETS	STA. 209+00.000 TO STA. 210+00.000	ILLINOIS FED. AID PROJECT		

DATE	
BY	
FINAL SURVEY	SURVEYED
NOTE BOOK	PLOTTED
NO.	TEMPLATE
	AREAS
	CHECKED

DATE	
BY	
ORIGINAL SURVEY	SURVEYED
NOTE BOOK	PLOTTED
NO.	TEMPLATE
	AREAS
	CHECKED



FILE NAME =
 c:\pw_work\pwidot\deterdingg\0334983\78354-089-shr-xs.dgn

USER NAME = deterdingg
 PLOT SCALE = 10.0000' / in.
 PLOT DATE = 10/16/2013

DESIGNED -
 DRAWN -
 CHECKED -
 DATE -

REVISED -
 REVISED -
 REVISED -
 REVISED -

**STATE OF ILLINOIS
 DEPARTMENT OF TRANSPORTATION**

CROSS-SECTIONS

SCALE: SHEET OF SHEETS STA. 210+50.000 TO STA. 211+00.000

F.A.S. RTE.	SECTION	COUNTY	TOTAL SHEETS	SHEET NO.
1911	10B-1	JACKSON	19	19
CONTRACT NO. 78385				
ILLINOIS FED. AID PROJECT				