

RT. FAI-180

SEC. ^{(06-3, 78-}
1) B-I

STATE OF ILLINOIS DEPARTMENT OF PUBLIC WORKS AND BUILDINGS DIVISION OF HIGHWAYS PLANS FOR PROPOSED FEDERAL AID HIGHWAY

* (06-3,78-1)B-1

FEDERAL AID ROUTE NO.	SEC.	COUNTY	TOTAL SHEETS	SHEET NO.
FA.I. 180	*	BUREAU PUTNAM	2	1
ILLINOIS PROJECT				

P-92-049-70

INDEX OF SHEETS

- 1 COVER SHEET
- INDEX OF SHEETS
- SUMMARY OF QUANTITIES
- 2 DETAILS FOR DECK SURFACING
- GENERAL NOTES

- STD. 2298-1 APPLICATION OF TRAFFIC CONTROL DEVICES
- STD. 2299-1 DESIGN OF TRAFFIC CONTROL DEVICES
- STD. 2300 FLAGMAN TRAFFIC CONTROL SIGN
- STD. 2316-1 APPLICATION OF TRAFFIC CONTROL DEVICES

SCALES

PLAN	1 INCH	100 FT.
PROFILE, HOR.	1 INCH	100 FT.
PROFILE, VERT.	1 INCH	10 FT.
CROSS-SECTIONS	1 INCH	5 FT.

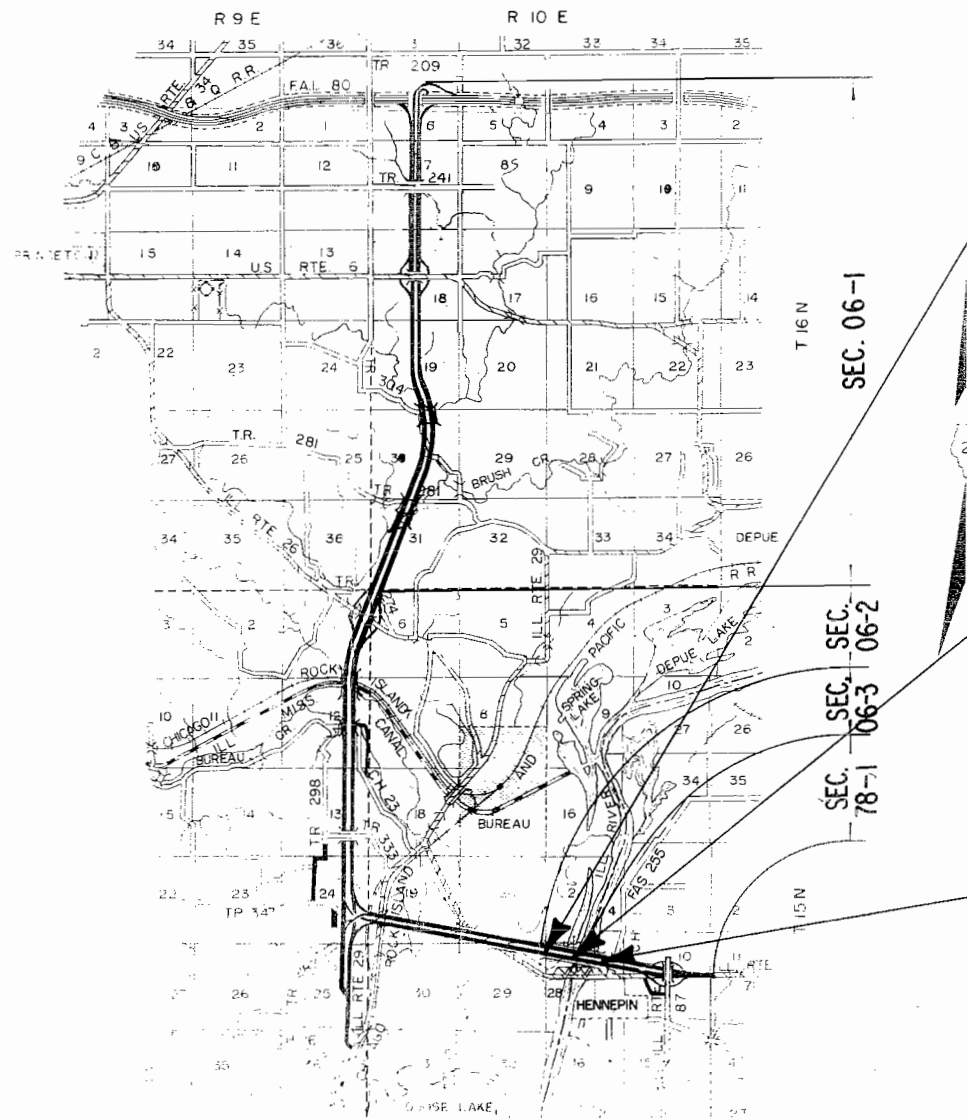
F.A.I. ROUTE 180 SECTION (06-3,78-1)B-I BUREAU-PUTNAM COUNTIES

C-92-058-70



SUMMARY OF QUANTITIES

CODE NO.	ITEM	UNIT	QUANTITY
406008	BITUMINOUS CONCRETE SURFACE COURSE CLASS I	TON	1,792
507001	FURNISHING & ERECTING STRUCTURAL STEEL	LBS.	12,659
Z10178	COAL TAR INTERLAYER PROTECTIVE COAT	SQ. YD.	20,212
XZ1009	TRAFFIC CONTROL & PROTECTION STANDARD 2316	C. DAY	90



**SECTION BEGINS
STA. 50+15.58**

SECTION (06-3,78-1)B-I INCLUDES ADJUSTMENT OF EXPANSION DEVICES AND PLACING OF COAL TAR INTER-LAYER PROTECTIVE COAT AND 1/2" OF BITUMINOUS CONCRETE SURFACE COURSE CLASS I ON BRIDGE CARRYING F.A.I. ROUTE 180 OVER THE ILLINOIS RIVER AT STATION 69+29.50

**SECTION ENDS
STA. 80+98.75**

NET LENGTH OF SECTION = 3083.17 FT = 0.584 MI.

STATE OF ILLINOIS DEPARTMENT OF PUBLIC WORKS AND BUILDINGS DIVISION OF HIGHWAYS	
SUBMITTED	May 22, 1970
EXAMINED	June 2, 1970
PASSED	June 2, 1970
APPROVED	June 2, 1970
APPROVED	June 2, 1970

CONTRACT NO. 28021

LAYOUT SCALE 1"=1 MILE

STATE OF ILLINOIS
DEPARTMENT OF PUBLIC WORKS & BUILDINGS
DIVISION OF HIGHWAYS

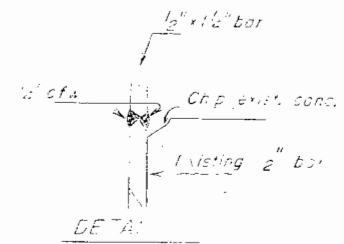
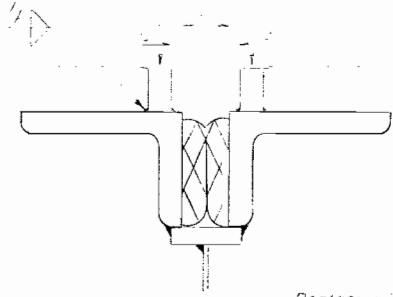
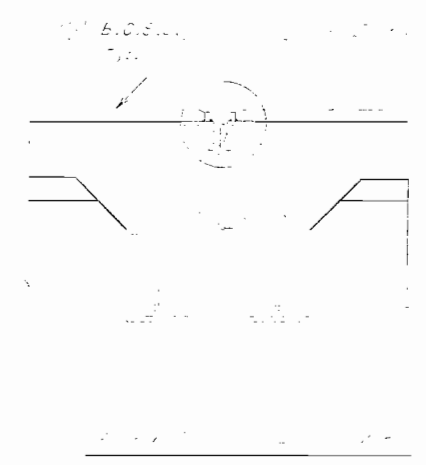
ROUTE NO.	SECTION	COUNTY	TOTAL SHEETS	SHEET NO.	SHEET NO. 2
FA.I.180	*	BUREAU PUTNAM	2	2	SHEETS
FED. ROAD DIST. NO. 7	ILLINOIS	FED. AID PROJECT			

PIERS - NOTES

Entire structure inspected and approved by E. J. Kelly
Date: May 23, 1970
Dist. Engineer: E. E. Summers

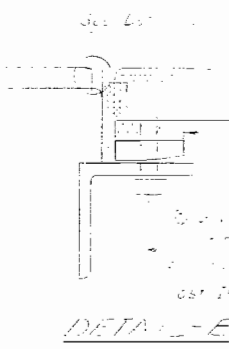
It shall be the responsibility of the contractor to verify all dimensions and materials.
Structural steel shall be fabricated to Structural Steel A.S.T.M. A36, and shall conform to Article 704 of the Standard Specifications.

Flange surfaces of expansion devices shall have previous welds removed as directed by the Engineer.

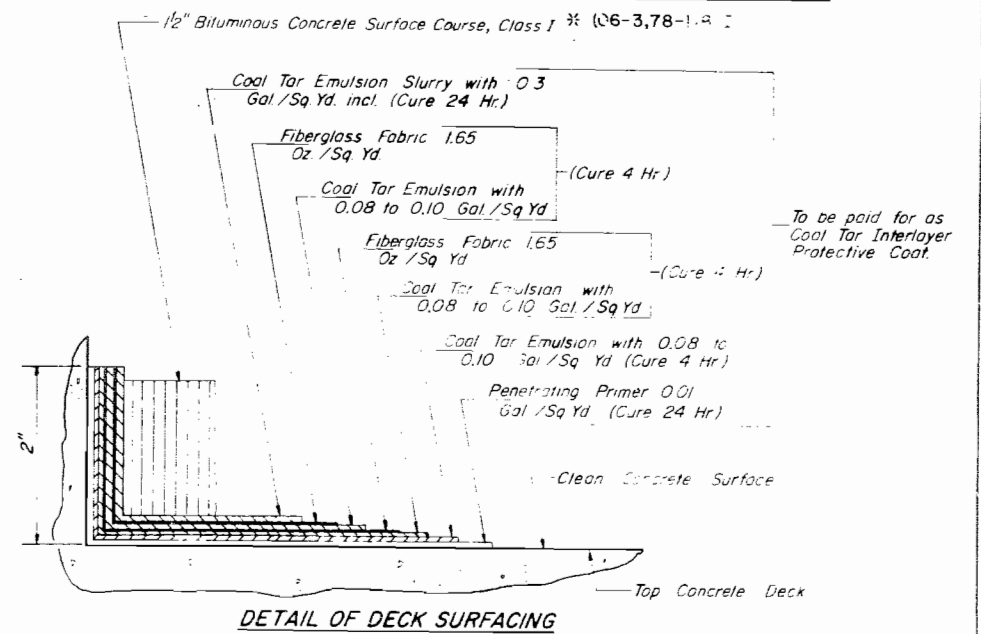


Replace with 1/2" x G.R. 1020 stl. granular or better flow filled threaded studs, automatically and with a 1/2" hole, beveled washer & self-locking nut. CSK bolts length to be determined in field.

PIERS - 3



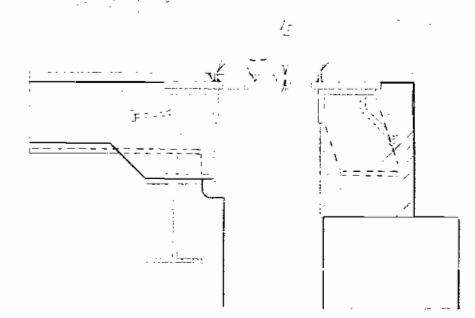
DETAIL - E



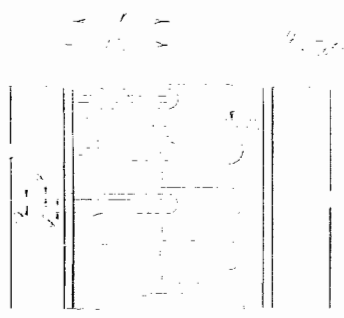
DETAIL OF DECK SURFACING

MATERIALS LIST

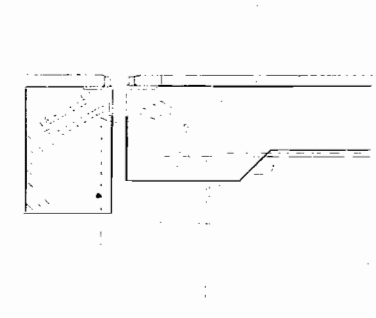
BAR SIZE	TOTAL LENGTHS
1/2" x 1 1/4" bar	1186
1 1/4" x 1 1/4" bar	714
3" x 1 1/2" shim	118
2 3/4" x 1 1/2" shim	118
3/4" x 5 1/2" CSK bolts	425
5" x 1 1/2" shims	118
Furn. & Erect. Struct. SII.	Lbs. 12,659



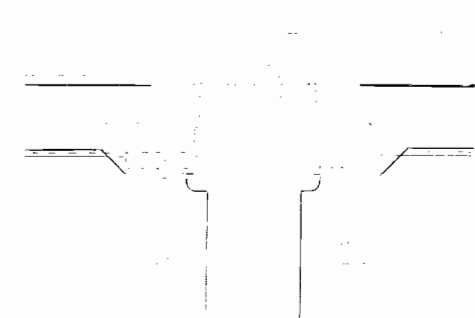
PIER ABUT.



PIER FLARE
E. Abut., Piers 9 & 12



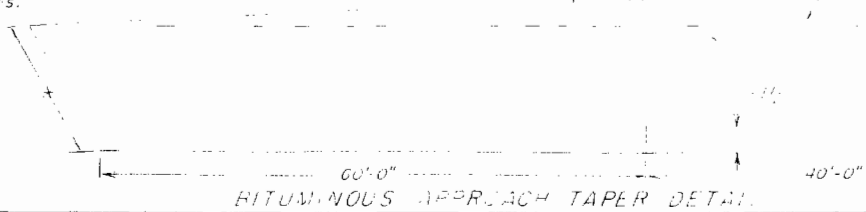
PIER ABUT.



Bituminous Concrete Surface Course
Class I, 112 Lb./In. Sq. Yd.

DESIGNED	E. E. Summers	EXAMINED	May 27 1970 E. E. Summers
CHECKED	E. E. Summers	PASSED	
DRAWN	E. E. Summers	APPROVED	
CHECKED	E. E. Summers		

* Taper width includes shoulder widths.



BITUMINOUS APPROACH TAPER DETAIL