

058

STATE OF ILLINOIS
DEPARTMENT OF TRANSPORTATION

ATE	SECTION	COUNTY	SHEETS	NO.
776	(101) PVMT PRSV	WAYNE	6	1
			CONTRACT NO 74951	

D-97-027-20

FOR INDEX OF SHEETS, SEE SHEET NO. 2

BRIDGE OMISSION

STATION 142+05.5 TO STATION 143+94.5

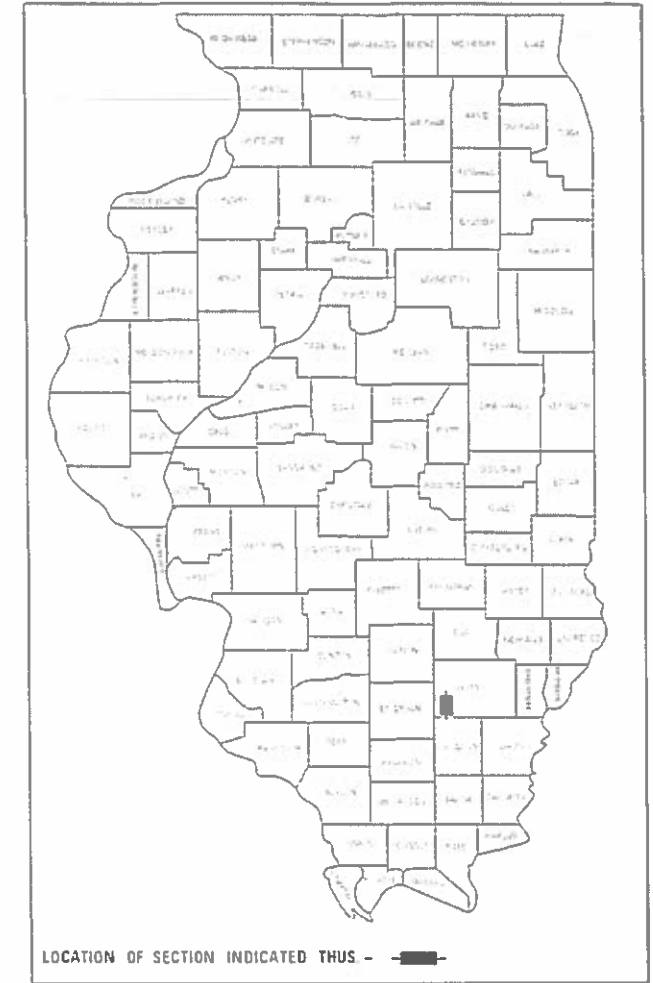
STATION EQUATIONS

STATION 180+50.7 BK TO STATION 181.08.9 AH

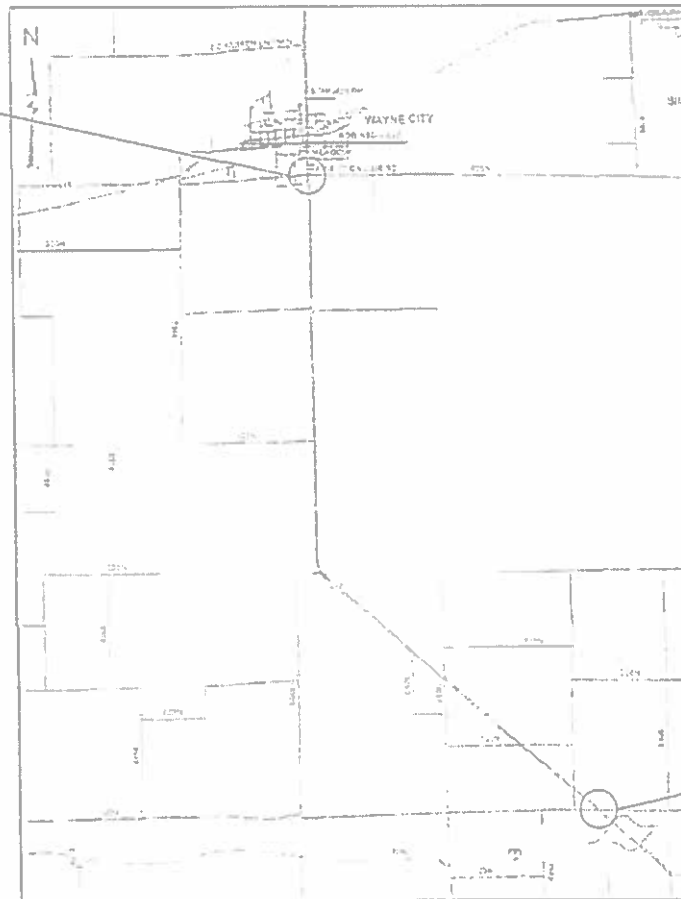
PROPOSED HIGHWAY PLANS

FAP 776 (ILL 242)
SECTION (101) PVMT PRSV
PROJECT STP VJJV (485)
CAPE SEAL
WAYNE COUNTY

C-97-028-20

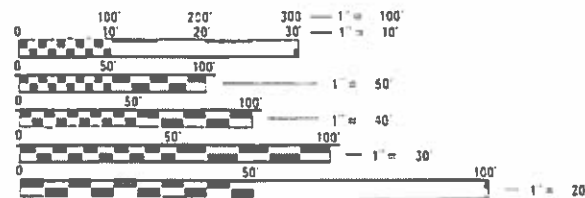


PROJECT BEGINS
STA. 14 + 80.00



PROJECT ENDS
STA. 315 + 50.00

ADT = 1200 (2017)



FULL SIZE PLANS HAVE BEEN PREPARED USING STANDARD ENGINEERING SCALES. REDUCED SIZED PLANS WILL NOT CONFORM TO STANDARD SCALES. IN MAKING MEASUREMENTS ON REDUCED PLANS, THE ABOVE SCALES MAY BE USED.

J.U.L.I.E.
JOINT UTILITY LOCATION INFORMATION FOR EXCAVATORS
1-800-892-0123
OR 811

PROJECT ENGINEER: TOM RONAN
PROJECT MANAGER: TOM RONAN
PHONE NUMBER: (217) 342-8320
CONTRACT NO. 74951

GROSS LENGTH = 30,011.8 FT. = 5.700 MILE
NET LENGTH = 29,822.8 FT. = 5.600 MILE

STATE OF ILLINOIS
DEPARTMENT OF TRANSPORTATION

SUBMITTED OCTOBER 18 2019
Jeffrey P. Myrka
REGIONAL ENGINEER

Dee L. [Signature]
ENGINEER OF DESIGN AND ENVIRONMENT

Paul [Signature]
DIRECTOR OF HIGHWAYS PROJECT IMPLEMENTATION

PRINTED BY THE AUTHORITY
OF THE STATE OF ILLINOIS

GENERAL NOTES

INDEX OF SHEETS

SHEET NO.	ITEM
1	COVER SHEET
2	INDEX OF SHEETS AND GENERAL NOTES
3	SUMMARY OF QUANTITIES
4	TYPICAL SECTION
5	SCHEDULES OF QUANTITIES
6	LOCATION MAP

THE FOLLOWING STANDARDS ARE A PART OF THESE PLANS AND ARE INCLUDED AFTER SHEET NO. 6:

STD. NO.	DESCRIPTION
000001-07	STANDARD SYMBOLS, ABBREVIATIONS AND PATTERNS
001006	DECIMAL OF AN INCH AND OF A FOOT
442201-03	CLASS C AND D PATCHES
701001-02	OFF-ROAD OPERATIONS, 2L, 2W, MORE THAT 15' AWAY
701006-05	OFF-RD OPERATIONS, 2L, 2W, 15' TO 24* FROM PAVEMENT EDGE
701011-04	OFF-RD MOVING OPERATIONS, 2L,2W, DAY ONLY
701301-04	LANE CLOSURE, 2L, 2W, SHORT TIME OPERATIONS
701306-04	LANE CLOSURE, 2L, 2W, SLOW MOVING OPERATIONS DAY ONLY, FOR SPEEDS >= 45 MPH
701311-03	LANE CLOSURE 2L, 2W, MOVING OPERATIONS - DAY ONLY
701901-08	TRAFFIC CONTROL DEVICES
780001-05	TYPICAL PAVEMENT MARKINGS
781001-04	TYPICAL APPLICATION RAISED RELECTIVE PAVEMENT MARKERS

THE PROPOSED WORK IS LOCATED ON ILLINOIS ROUTE 242 FROM SOUTH OF SECTION LINE ROAD AT WAYNE CITY TO APPROXIMATELY 0.4 MILES NORTH OF INTERSTATE 64 IN WAYNE COUNTY.

THE WORK INCLUDED IN THIS SECTION CONSISTS OF PAVEMENT PATCHING, RAISED REFLECTIVE PAVEMENT MARKER REMOVAL. APPLYING A CAPE SEAL SURFACE TREATMENT, PAVEMENT MARKING, RAISED REFLECTIVE PAVEMENT MARKERS, TRAFFIC CONTROL, AND ANY OTHER WORK NECESSARY TO COMPLETE THE SECTION.

FOR THE CAPE SEAL, THE AGGREGATE GRADATION FOR THE A-1 BITUMINOUS SURFACETREATMENT SHALL BE CRUSHED STONE, CA16.

IN ADDITION TO THE REQUIREMENTS OF ARTICLE 405.09(a)(4) SURVEY MONUMENTS SHOULD BE PROTECTED FROM BITUMINOUS MATERIALS AND THE MICRO-SURFACING. THE CAPE SEAL SHOULD COVER THE ENTIRE PAVEMENT SURFACE.

PAVEMENT MARKING SHALL BE APPLIED IN ACCORDANCE WITH SECTION 780 TO THE STANDARD SPECIFICATIONS. SHORT TERM PAVEMENT MARKING SHALL BE APPLIED TO THE A-1 SURFACE TREATMENT AND THE MICRO-SURFACING. PAINT SHALL BE USED FOR THE CENTERLINE ON THE A-1 SURFACE TREATMENT. THE CENTERLINE STRIPES FOR SHORT TERM PAVEMENT MARKING SHALL BE 10 FOOT LONG AT 40 FOOT CENTERS OF PAINT OR 4 FOOT LONG STRIPES OF TAPE. THE QUANTITY FOR PAINT PAVEMENT MARKING LINE 4" IS MADE UP OF 56,260 FEET WHITE AND 13,502 FEET YELLOW.

MODEL: Default
 FILE: \\blm1c01.pw.uspbarn.com\data\illinois.gov\PW\DOT\Documents\DOT_Offices\District_7\Projects\74951\CADD\data\CAD\ Sheets\74951-1-shc-genote.dgn

USER NAME = steffenmk	DESIGNED -	REVISED -
	DRAWN -	REVISED -
PLOT SCALE = 100.0000 ' / in.	CHECKED -	REVISED -
PLOT DATE = 11/12/2019	DATE -	REVISED -

STATE OF ILLINOIS
 DEPARTMENT OF TRANSPORTATION

INDEX OF SHEETS
 AND GENERAL NOTES

SCALE:	SHEET	OF	SHEETS	STA.	TO STA.

F.A.P. RTE.	SECTION	COUNTY	TOTAL SHEETS	SHEET NO.
776	(101) PVMT PRSV	WAYNE	6	2
CONTRACT NO. 74951				
ILLINOIS			FED. AID PROJECT	

80% FED
20% STATE

80% FED
20% STATE

SUMMARY OF QUANTITIES			TOTAL QUANTITIES	CONSTRUCTION TYPE CODE	
CODE NO	ITEM	UNIT		0005	-----
40400001	FIBER-MODIFIED ASPHALT CRACK SEALING	FOOT	51781	51781	
40400020	BUMP REMOVAL	EACH	46	46	
40500061	CAPE SEAL, TYPE II	SO YD	86155	86155	
44201839	CLASS D PATCHES, TYPE II, 16 INCH	SO YD	318	318	
44201843	CLASS D PATCHES, TYPE III, 16 INCH	SO YD	18	18	
44201845	CLASS D PATCHES, TYPE IV, 16 INCH	SO YD	36	36	
67100100	MOBILIZATION	L SUM	1	1	
70100460	TRAFFIC CONTROL AND PROTECTION, STANDARD 701306	L SUM	1	1	
70107025	CHANGEABLE MESSAGE SIGN	CAL DA	28	28	
70300100	SHORT TERM PAVEMENT MARKING	FOOT	15000	15000	
70300150	SHORT TERM PAVEMENT MARKING REMOVAL	SO FT	990	990	
70300220	TEMPORARY PAVEMENT MARKING - LINE 4"	FOOT	72761	72761	
78001110	PAINT PAVEMENT MARKING - LINE 4"	FOOT	72761	72761	
78100100	RAISED REFLECTIVE PAVEMENT MARKER	EACH	375	375	

SUMMARY OF QUANTITIES			TOTAL QUANTITIES	CONSTRUCTION TYPE CODE	
CODE NO	ITEM	UNIT		0005	-----
78300200	RAISED REFLECTIVE PAVEMENT MARKER REMOVAL	EACH	375	375	
X0327980	PAVEMENT MARKING REMOVAL - WATER BLASTING	SO FT	23759	23759	

* SPECIALTY ITEM

REV. - MS

MODEL: Default
 FILE NAME: P:\p1\p1room.dwg
 PROJECT: 74951\CADD\Drawings\DOT Office\Drawings\74951-STS-S00.dgn

USER NAME = steffenmk	DESIGNED -	REVISED -
PLOT SCALE = 2.0000' / in.	DRAWN -	REVISIONS -
PLOT DATE = 10/18/2019	CHECKED -	REVISIONS -
	DATE -	REVISIONS -

STATE OF ILLINOIS
DEPARTMENT OF TRANSPORTATION

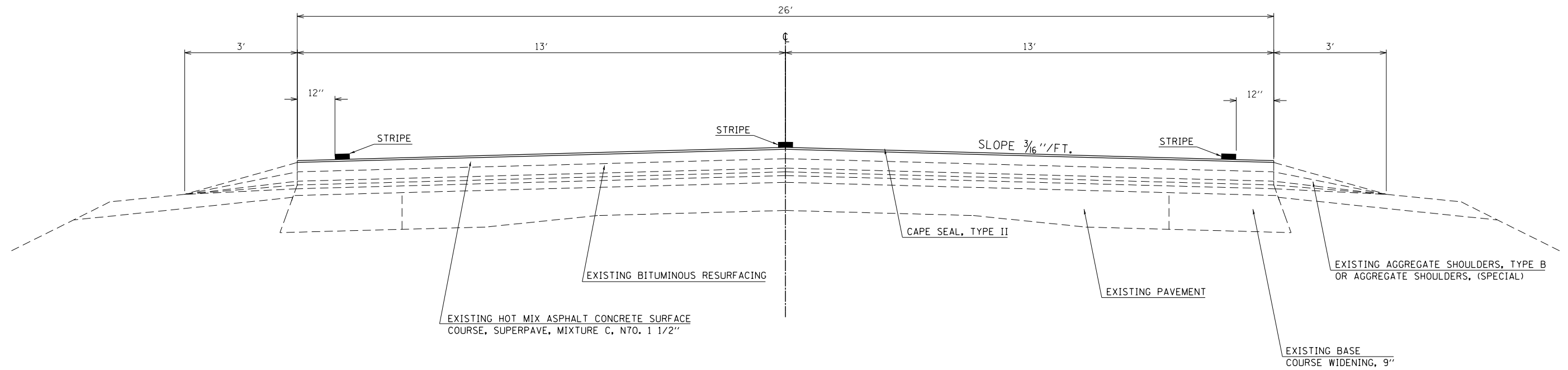
SUMMARY OF QUANTITIES

SCALE: SHEET OF SHEETS STA. TO STA.

F.A.P. RTE.	SECTION	COUNTY	TOTAL SHEETS	SHEET NO.
776	(101) PVMT PRSV	WAYNE	6	3
CONTRACT NO. 74951			ILLINOIS FED. AID PROJECT	

TYPICAL CROSS SECTION

STATION 14+80.00 TO STATION 315+50.00



NOTE: NOT DRAWN TO SCALE

MODEL: Default
 FILE: Model_C:\pub\planroom\dat\illinois\gov\pww\DOT\Documents\DOT_Offices\I\Irt\ct 7\Projects\74951\CADD\DATA\CAD\Sheets\74951-shct-typical.dgn

USER NAME = steffemk	DESIGNED -	REVISED -
	DRAWN -	REVISED -
PLOT SCALE = 2,0000 ' / in.	CHECKED -	REVISED -
PLOT DATE = 11/12/2019	DATE -	REVISED -

**STATE OF ILLINOIS
DEPARTMENT OF TRANSPORTATION**

TYPICAL CROSS SECTION

SCALE: SHEET OF SHEETS STA. TO STA.

F.A.P. RTE.	SECTION	COUNTY	TOTAL SHEETS	SHEET NO.
776	(101) PVMT PRSV	WAYNE	6	4
CONTRACT NO. 74951			ILLINOIS FED. AID PROJECT	

MODEL: Default
 FILE: h:\m\c\p\pub\h\m\room\dat\illinois\gov\p\w\dot\Documents\DOT_Offices\Illinet\7\Projects\74951\CAAD\BataCAD\sheet\DOT74951-Resurfacing\resurf.dgn

PAVEMENT MARKING SCHEDULE

STATION TO STATION	LENGTH FOOT	PAVEMENT MARKING REMOVAL - WATER BLASTING SQ FT	PAINT PAVEMENT MARKING - LINE 4" WHITE FOOT	PAINT PAVEMENT MARKING - LINE 4" YELLOW FOOT	SHORT-TERM PAVEMENT MARKING FOOT	TEMPORARY PAVEMENT MARKING - LINE 4" FOOT	RAISED REFLECTIVE PAVEMENT MARKER REMOVAL EACH	RAISED REFLECTIVE PAVEMENT MARKERS EACH
14+80.00 TO 142+05.50	12725.5	9382.7	25351	3181	6360	28532	159	159
142+05.50 TO 143+94.50	189.0	140	378	47	100	425	2	2
143+94.50 TO 180+50.70	3656.2	2556	7072	914	1820	7987	46	46
180+50.70 = 181+08.90	STATION EQUATION							
181+08.90 TO 315+50.00	13441.1	11680	26458	9359	6720	35817	168	168
PROJECT TOTAL		23759	59260	13502	15000	72761	375	375

RESURFACING SCHEDULE

STATION	TO	STATION	LENGTH FOOT	WIDTH FOOT	CAPE SEAL, TYPE II SQ YD
14+80.00	TO	29+53.00	1,473.0	26.0	4,255.3
29+53.00	TO	29+83.00	30.0	26.0	86.7
29+83.00	TO	30+83.00	100.0	26.0	288.9
30+83.00	TO	31+13.00	30.0	26.0	86.7
31+13.00	TO	65+10.00	3,397.0	26.0	9,813.6
65+10.00	TO	65+40.00	30.0	26.0	86.7
65+40.00	TO	69+76.00	436.0	26.0	1,259.6
69+76.00	TO	70+06.00	30.0	26.0	86.7
70+06.00	TO	141+75.50	7,169.5	26.0	20,711.9
141+75.50	TO	142+05.50	30.0	26.0	86.7
142+05.50	TO	143+94.50	189.0		
143+94.50	TO	144+24.50	30.0	26.0	86.7
144+24.50	TO	158+30.00	1,405.5	26.0	4,060.3
158+30.00	TO	158+60.00	30.0	26.0	86.7
158+60.00	TO	159+60.00	100.0	26.0	288.9
159+60.00	TO	159+90.00	30.0	26.0	86.7
159+90.00	TO	180+50.70	2,060.7	26.0	5,953.1
180+50.70	=	181+08.90			
181+08.90	TO	203+72.50	2,263.6	26.0	6,539.3
203+72.50	TO	204+02.50	30.0	26.0	86.7
204+02.50	TO	204+52.50	50.0	26.0	144.4
204+52.50	TO	204+83.50	31.0	26.0	89.6
204+83.50	TO	205+33.50	50.0	26.0	144.4
205+33.50	TO	205+63.50	30.0	26.0	86.7
205+63.50	TO	210+61.00	497.5	26.0	1,437.2
210+61.00	TO	210+91.00	30.0	26.0	86.7
210+91.00	TO	211+91.00	100.0	26.0	288.9
211+91.00	TO	212+21.00	30.0	26.0	86.7
212+21.00	TO	256+41.00	4,420.0	26.0	12,768.9
256+41.00	TO	256+71.00	30.0	26.0	86.7
256+71.00	TO	257+71.00	100.0	26.0	288.9
257+71.00	TO	258+01.00	30.0	26.0	86.7
258+01.00	TO	284+86.00	2,685.0	26.0	7,756.7
284+86.00	TO	285+16.00	30.0	26.0	86.7
285+16.00	TO	286+16.00	100.0	26.0	288.9
286+16.00	TO	286+46.00	30.0	26.0	86.7
286+46.00	TO	315+50.00	2,904.0	26.0	8,389.3
PROJECT TOTALS			30,012		86,155

USER NAME = steffemk	DESIGNED -	REVISED -
	DRAWN -	REVISED -
PLOT SCALE = 100.0000' / in.	CHECKED -	REVISED -
PLOT DATE = 11/12/2019	DATE -	REVISED -

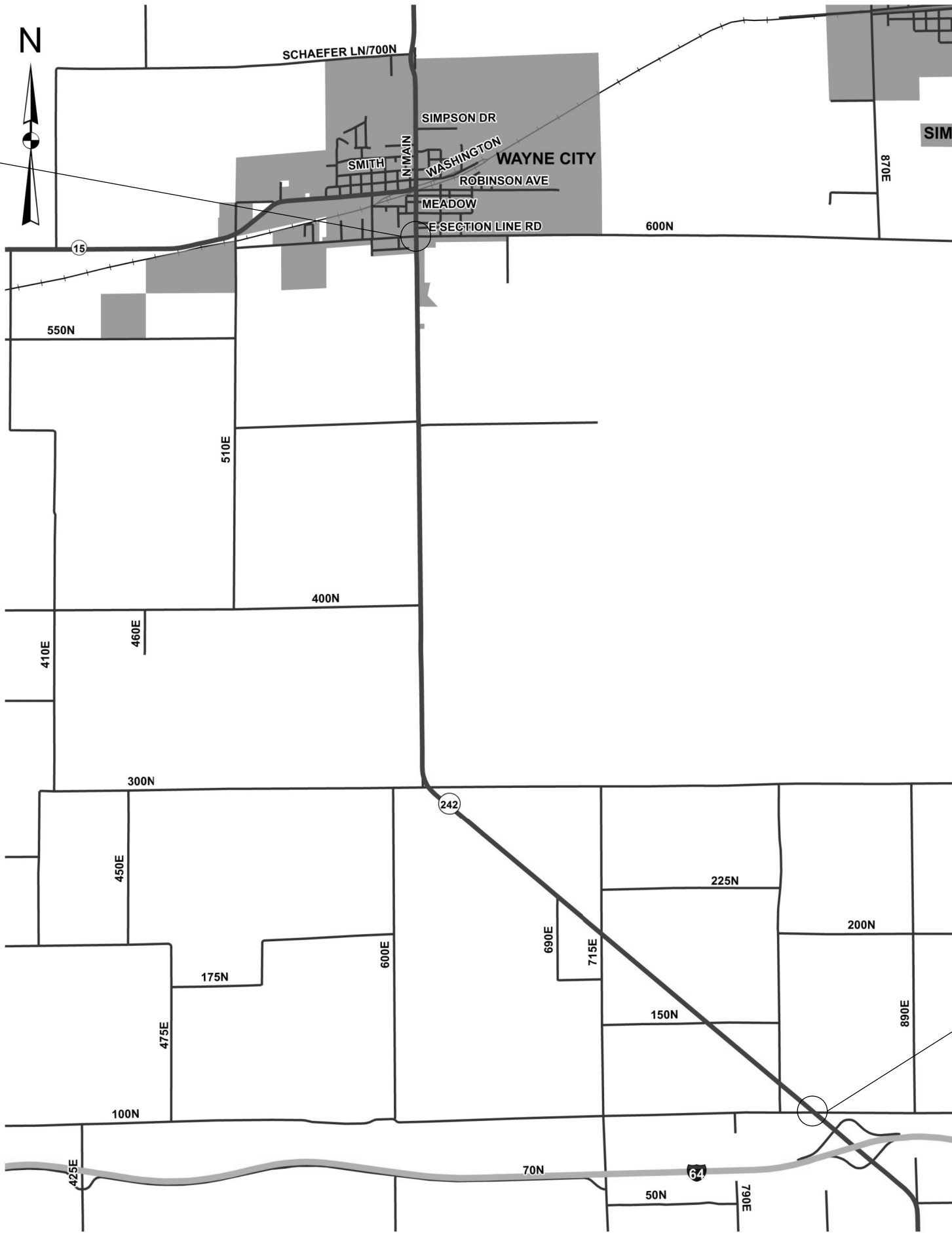
STATE OF ILLINOIS
 DEPARTMENT OF TRANSPORTATION

SCALE:		SHEET	OF	SHEETS	STA.	TO	STA.
--------	--	-------	----	--------	------	----	------

SCHEDULE OF QUANTITIES
 AND DETAIL SHEET

F.A.P. RTE.	SECTION	COUNTY	TOTAL SHEETS	SHEET NO.
776	(101) PVMT PRSV	WAYNE	6	5
CONTRACT NO. 74951				
ILLINOIS		FED. AID PROJECT		

PROJECT BEGINS
STA. 14+80.00



PROJECT ENDS
STA. 315+50.00

MODEL: Default
 FILE: h:\m\c\p\pub\h\m\room\dat\illinois\gov\p\w\dot\Documents\DOT_Offices\District_7\Projects\74951\CADD\DATA\CAD\Sheets\74951-shc-detslls.dgn

USER NAME = steffemk	DESIGNED -	REVISED -
	DRAWN -	REVISED -
PLOT SCALE = 2,000' / in.	CHECKED -	REVISED -
PLOT DATE = 10/18/2019	DATE -	REVISED -

**STATE OF ILLINOIS
DEPARTMENT OF TRANSPORTATION**

LOCATION MAP

SCALE: SHEET OF SHEETS STA. TO STA.

F.A.P. RTE.	SECTION	COUNTY	TOTAL SHEETS	SHEET NO.
776	(101) PVMT PRSV	WAYNE	6	6
CONTRACT NO. 74951				
ILLINOIS FED. AID PROJECT				