

STATE OF ILLINOIS  
DEPARTMENT OF TRANSPORTATION

RTE	SECTION	COUNTY	TOTAL SHEETS	SHEET NO
VAR	D4 WEED SPRAYING 2020	VARIOUS	21	1
		ILLINOIS	CONTRACT NO 68F13	

INDEX OF SHEETS:

- 1 COVER SHEET
- 2 GENERAL NOTES
- 3 SUMMARY OF QUANTITIES
- 4-13 LOCATION MAPS
- 14-20 SCHEDULE OF QUANTITIES
- 21 HERBICIDE DOSAGE CHART

**PROPOSED  
HIGHWAY PLANS**

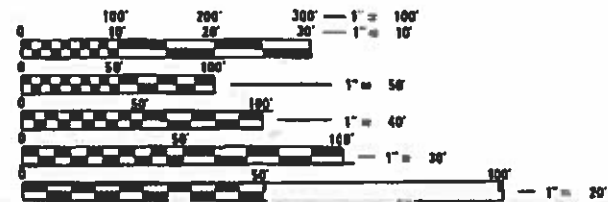
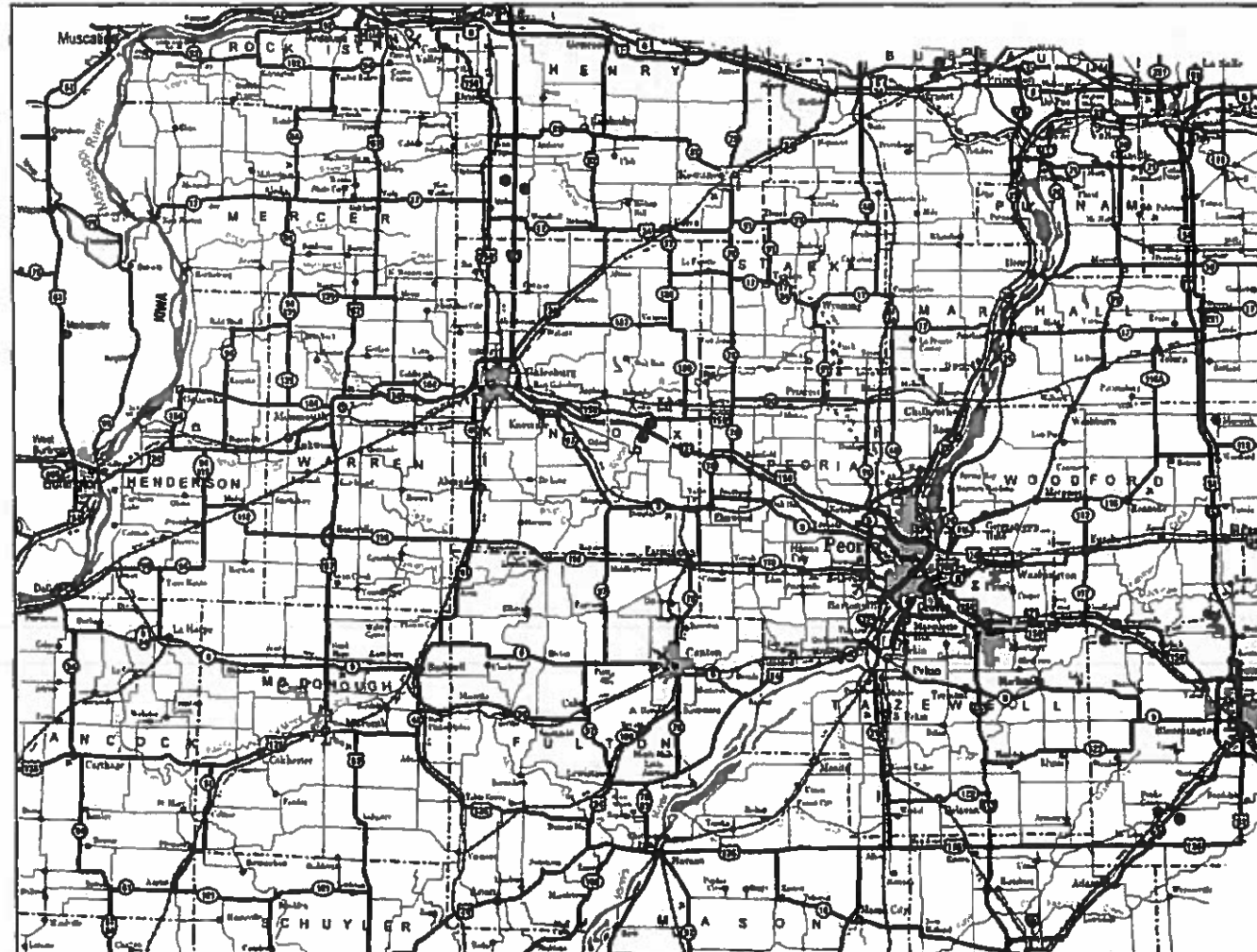
VARIOUS ROUTE  
SECTION D4 WEED SPRAYING 2020

TYPE of IMPROVEMENT: WEED SPRAYING  
VARIOUS COUNTIES

C-94-003-20

STANDARDS

- 701001-02      701301-04
- 701006-05      701311-03
- 701011-04      701426-09
- 701101-05      701428-01
- 701106-02      701901-08



FULL SIZE PLANS HAVE BEEN PREPARED USING STANDARD ENGINEERING SCALES. REDUCED SIZED PLANS WILL NOT CONFORM TO STANDARD SCALES. IN MAKING MEASUREMENTS ON REDUCED PLANS, THE ABOVE SCALES MAY BE USED.

J.U.L.I.E.  
JOINT UTILITY LOCATION INFORMATION FOR EXCAVATION  
1-800-892-0123  
OR 811

PROJECT ENGINEER: MIKE LEWIS (309) 671-3454  
PROJECT MANAGER: SUSAN DAVIS (309) 671-4485  
CATALOG NO. 035835-00D  
CONTRACT NO. 68F13

AREA TO BE SPRAYED: 2181.5 ACRES

D-94-002-20



LOCATION OF SECTION INDICATED THUS: [Symbol]

IMPROVEMENT DESCRIPTION: THIS PROJECT CONSISTS OF WEED SPRAYING AT VARIOUS LOCATIONS WITHIN DISTRICT 4.

STATE OF ILLINOIS  
DEPARTMENT OF TRANSPORTATION

SUBMITTED *October 24, 2019*

*[Signature]*  
REGION THREE ENGINEER

*[Signature]*  
ENGINEER OF DESIGN AND ENVIRONMENT

*[Signature]*  
DIRECTOR OF HIGHWAYS PROJECT IMPLEMENTATION 3

PRINTED BY THE AUTHORITY  
OF THE STATE OF ILLINOIS

## SCHEDULE OF COMPLETION DATES

START DATE	COUNTY	COMPLETION DATE	COMPLETE DATE/SIGN OFF
APRIL 15, 2020	MCDONOUGH / KNOX	APRIL 24	
APRIL 20, 2020	PEORIA	MAY 3	
MAY 8, 2020	TAZEWELL	MAY 13	
MAY 14, 2020	TIE UP LOOSE ENDS / MISSED SPOTS	MAY 15	

NOTE: DAILY INSPECTIONS BY ROADSIDE MANAGER IN ALL LOCATIONS.

### NO SPRAY AREAS

- I-155 MM 22-29 NB & SB with Exceptions Listed in Plans
- I-155 MM 25 Tremont Interchange (Rattlesnake Master Plant)
- US 34 & Henderson Street (Rattlesnake Master Plant)
- I-74 MM 85 WB/EB Perennial Bed and Under High Tension Power Lines
- I-74 MM 62 WB (See Map)
- I-74 MM 58 WB Perennial Bed
- I-74 MM 91-93 Downtown Peoria Planting
- US 34 & Henderson Street NW & SW Interchange (Rattlesnake Master Plant)

### Notes:

1. Areas not accessible by spraying will be hand-sprayed with spray gun reaching at least 125 feet.
2. Spray rigs shall be equipped with high-flotation tires to access soft infields.
3. Non-working equipment shall be repaired immediately with no additional time allotted to the contractor for repairs.
4. Spray operators shall keep a copy of contract spray locations in the rig at all times.
5. Wind speed must be < 15 mph in order to perform work.
6. Temperature must be > 45 in order to perform work.

FOR INFORMATION IN CASE OF  
A CHEMICAL EMERGENCY CALL:

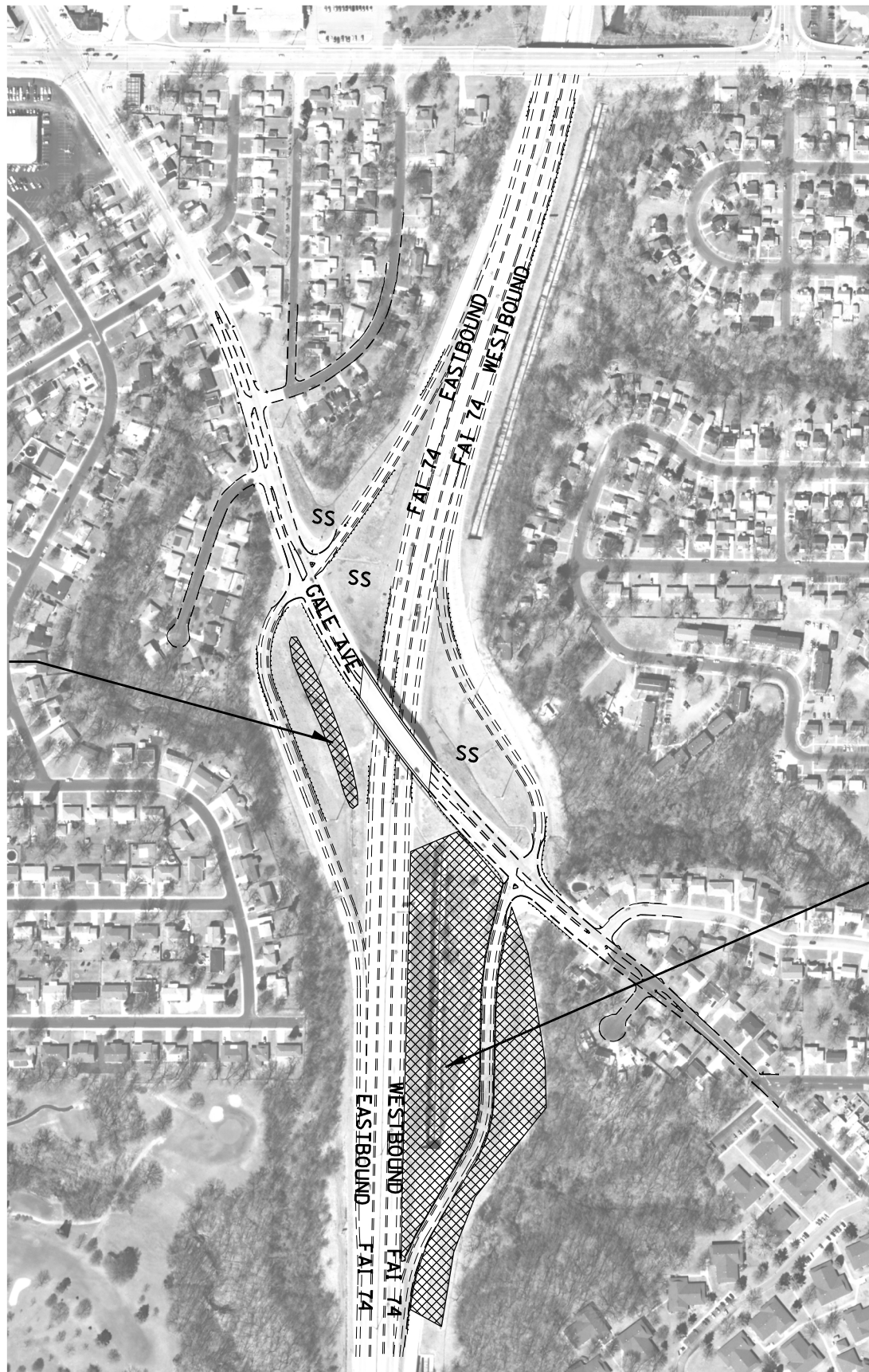
DOW AGRO AT 1-800-263-1196

MODEL: Default  
 FILE: \\nas01c.pw.us.ibm.com\data\illinois.gov\PIWDOT\Documents\DOT\_Offices\District\_4\Projects\I-74\_68F13\CADD\Drawings\CAD\Drawings\I-74\W08R11G-CADD.dgn

	USER NAME = eversct	DESIGNED -	REVISED -	<b>STATE OF ILLINOIS DEPARTMENT OF TRANSPORTATION</b>	<b>GENERAL NOTES</b>				F.A. RTE.	SECTION	COUNTY	TOTAL SHEETS	SHEET NO.
		DRAWN -	REVISED -										
	PLOT SCALE = 100,0000' / in.	CHECKED -	REVISED -									21	2
	PLOT DATE = 10/24/2019	DATE -	REVISED -			SCALE:	SHEET	OF	SHEETS	STA.	TO	STA.	
											ILLINOIS FED. AID PROJECT		



SPRAY EDGE OF BRUSH



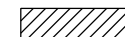
**MM 90 Exit I-74 / GALE AVE. INTERCHANGE**



**US 150 / IL 116 INTERCHANGE**

BRUSH, CANADA THISTLE AND TEASEL VERY STEEP MAY REQUIRE SS•

**LEGEND**



SS = Spot Spraying



BR = Brush



BS = Blanket Spraying

SS\* = May Require Hand Spray/Back Pack

TSL = Teasel

THSL = Thistle

CV = Crown Vetch

FL = Fence Line

(++) = Engineer must be present during spray operations

NS = No Spray

Wet = Area is Seasonally Wet

PR = Prairie - Consult with R.E.

Edges = Spray mowed edge only & consult with R.E.

Heavy = Heavy Infestation

SRRRA = Spoon River Rest Area

STP = Steep Hillside

(\*) = For Information Only

**NOT TO SCALE**

MODEL: Default  
FILE: Model\_01\_Plan.pdw  
PROJECT: I-74 / GALE AVE. INTERCHANGE  
DRAWING: I-74 / GALE AVE. INTERCHANGE - SPRAYING

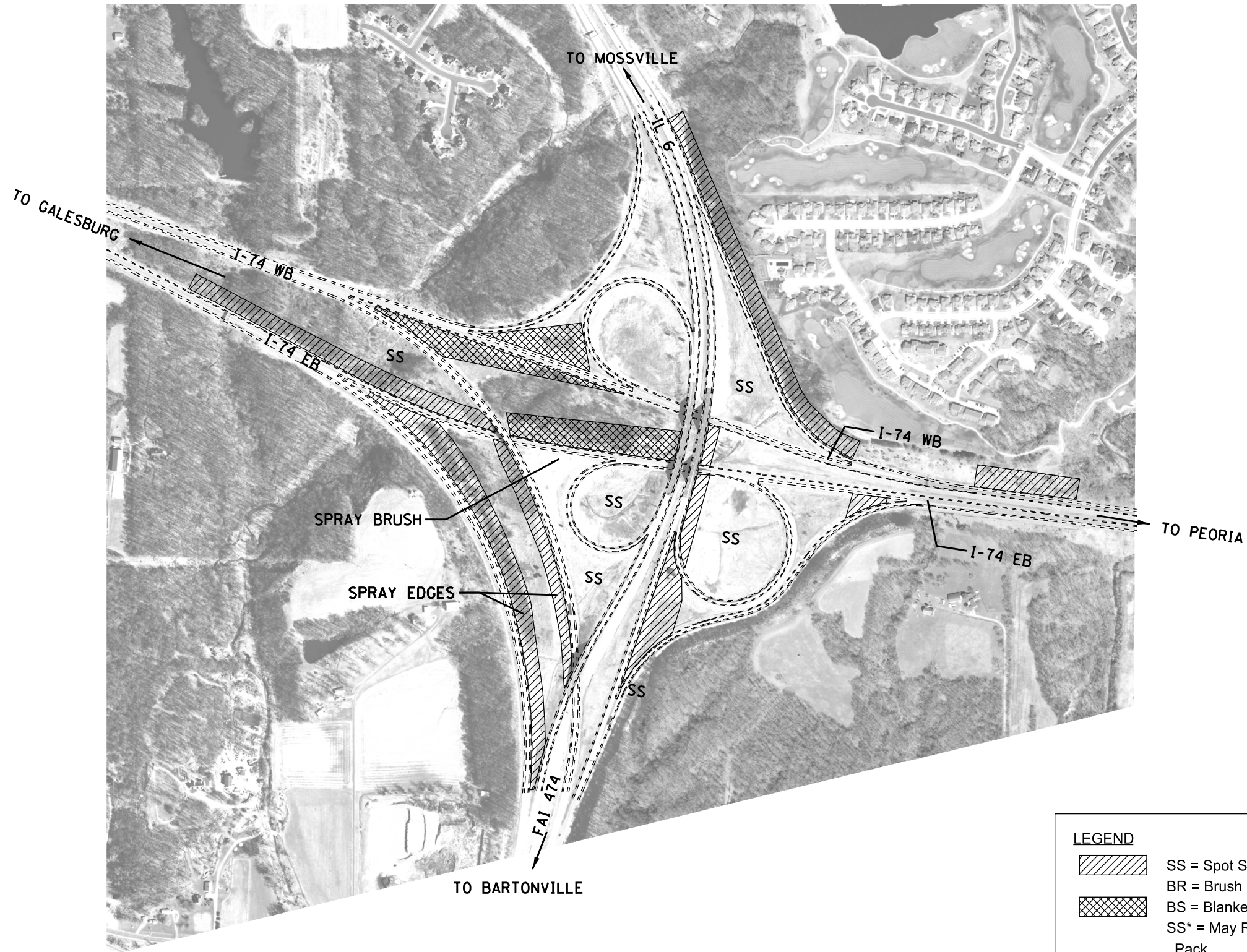
USER NAME = eversct	DESIGNED -	REVISED -
	DRAWN -	REVISED -
PLOT SCALE = 100,0000' / in.	CHECKED -	REVISED -
PLOT DATE = 10/24/2019	DATE -	REVISED -

**STATE OF ILLINOIS  
DEPARTMENT OF TRANSPORTATION**



**LOCATION MAP  
I-74 / GALE AVE. AND US 150 / IL 116 INTERCHANGES**

SCALE: SHEET OF SHEETS STA. TO STA.

F.A. RTE.	SECTION	COUNTY	TOTAL SHEETS	SHEET NO.
VAR.	D4 WEEK SPRAYING 2020	VARIOUS	21	4
CONTRACT NO. 68F13				
ILLINOIS FED. AID PROJECT				



**LEGEND**

	SS = Spot Spraying	NS = No Spray
	BR = Brush	Wet = Area is Seasonally Wet
	BS = Blanket Spraying	PR = Prairie - Consult with R.E.
	SS* = May Require Hand Spray/Back Pack	Edges = Spray mowed edge only & consult with R.E.
	TSL = Teasel	Heavy = Heavy Infestation
	THSL = Thistle	SRRA = Spoon River Rest Area
	CV = Crown Vetch	STP = Steep Hillside
	FL = Fence Line	(*) = For Information Only
	(++) = Engineer must be present during spray operations	

NOT TO SCALE

MODEL: Default  
 FILE: \\baron.com\data\illinois.gov\PIWDOT\Documents\DOT\_Offices\District\_4\Projects\I-74\_IL6\I-74\_IL6\_474\W081110-CADD.dgn

USER NAME = eversct	DESIGNED -	REVISED -
	DRAWN -	REVISED -
PLOT SCALE = 100,0000' / in.	CHECKED -	REVISED -
PLOT DATE = 10/24/2019	DATE -	REVISED -

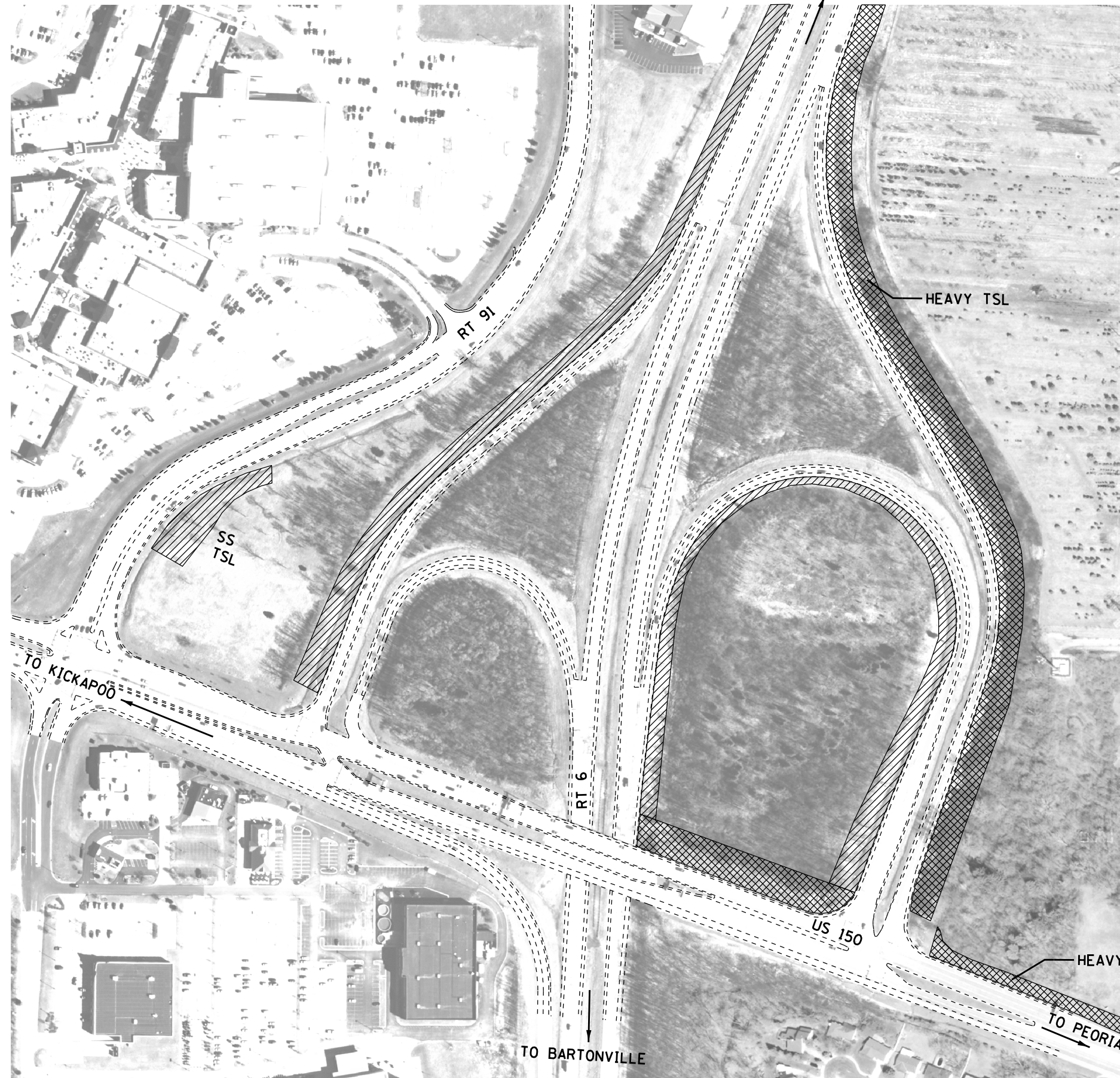
**STATE OF ILLINOIS  
DEPARTMENT OF TRANSPORTATION**

**LOCATION MAP (EXIT 87A & 87B)  
I-74, I-474, IL 6 INTERCHANGE**

SCALE: SHEET OF SHEETS STA. TO STA.

F.A. RTE.	SECTION	COUNTY	TOTAL SHEETS	SHEET NO.
VAR.	D4 WEEK SPRAYING 2020	VARIOUS	21	5
			CONTRACT NO. 68F13	
		ILLINOIS	FED. AID PROJECT	

TO MOSSVILLE



**LEGEND**

- SS = Spot Spraying
- BR = Brush
- BS = Blanket Spraying
- SS\* = May Require Hand Spray/Back Pack
- TSL = Teasel
- THSL = Thistle
- CV = Crown Vetch
- FL = Fence Line
- (++) = Engineer must be present during spray operations
- NS = No Spray
- Wet = Area is Seasonally Wet
- PR = Prairie - Consult with R.E.
- Edges = Spray mowed edge only & consult with R.E.
- Heavy = Heavy Infestation
- SRRA = Spoon River Rest Area
- STP = Steep Hillside
- (\*) = For Information Only

NOT TO SCALE

MODEL: Default  
 FILE NAME: p:\pub\barcom\dat\_illinois\pwr\WIDOT\Documents\DOT\_Offices\District 4\Projects\04\_68F13\CADD\04\CAD\Drawings\0468F13-WORKING-CADD.dwg

USER NAME = eversct	DESIGNED -	REVISED -
	DRAWN -	REVISED -
PLOT SCALE = 100.0000' / In.	CHECKED -	REVISED -
PLOT DATE = 10/24/2019	DATE -	REVISED -

**STATE OF ILLINOIS**  
**DEPARTMENT OF TRANSPORTATION**

LOCATION MAP (EXIT 2) RT 6 / US 150 INTERCHANGE		F.A. RTE.	SECTION	COUNTY	TOTAL SHEETS	SHEET NO.
		VAR.	D4 WEED SPRAYING 2020	VARIOUS	21	6
SCALE:	SHEET	OF	SHEETS	STA.	TO	STA.

		ILLINOIS	FED. AID PROJECT
--	--	----------	------------------

TO EDELSTEIN

STEEP HILLSIDE  
HEAVY THSL

TO MOSSVILLE

RT 6

RT 40 /  
KNOXVILLE

SS  
PR ++

SS  
PR ++

TO PEORIA

TO PEORIA

HEAVY TSL



**SYMBOL NOTES:**

- 1. INFIELDS HAVE GOOD QUALITY PRAIRIE, SPOT SPRAY INDIVIDUAL TSL PLANTS ONLY.
- 2. AREAS HATCHED HAVE DENSE TEASEL COLONIES.

**LEGEND**



SS = Spot Spraying



BR = Brush



BS = Blanket Spraying

SS\* = May Require Hand Spray/Back Pack

TSL = Teasel

THSL = Thistle

CV = Crown Vetch

FL = Fence Line

(++) = Engineer must be present during spray operations

NS = No Spray

Wet = Area is Seasonally Wet

PR = Prairie - Consult with R.E.

Edges = Spray mowed edge only & consult with R.E.

Heavy = Heavy Infestation

SRRA = Spoon River Rest Area

STP = Steep Hillside

(\*) = For Information Only

NOT TO SCALE

MODEL: Default  
FILE: Model: p:\pub\barroom.dwg  
PROJECT: 68F13\CADD\Drawings\DOT\Office\Drawings\68F13\CADD\Drawings\DOT\Office\Drawings\68F13\WORKING-CADD.dwg

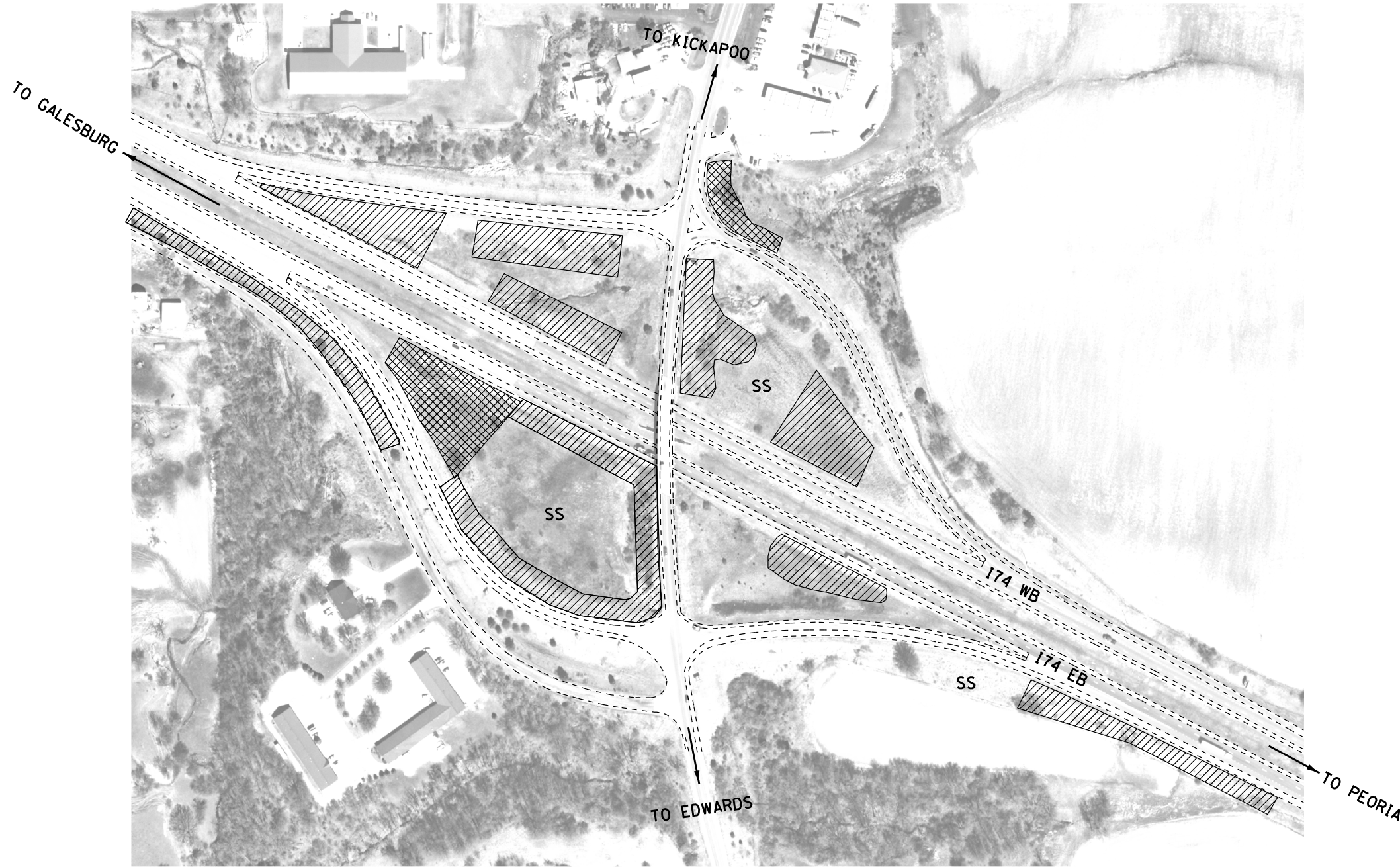
USER NAME = eversct	DESIGNED -	REVISED -
	DRAWN -	REVISED -
PLOT SCALE = 100,0000' / in.	CHECKED -	REVISED -
PLOT DATE = 10/24/2019	DATE -	REVISED -

**STATE OF ILLINOIS  
DEPARTMENT OF TRANSPORTATION**



**LOCATION MAP (EXIT 6)  
RT 6 /RT 40 /KNOXVILLE INTERCHANGE**

SCALE: SHEET OF SHEETS STA. TO STA.

F.A. RTE.	SECTION	COUNTY	TOTAL SHEETS	SHEET NO.
VAR.	D4 WEED SPRAYING 2020	VARIOUS	21	7
			CONTRACT NO. 68F13	
		ILLINOIS	FED. AID PROJECT	



**LEGEND**

- |   |   |   |
|---|---|---|
|  | SS = Spot Spraying                                      | NS = No Spray                                     |
|  | BR = Brush  | Wet = Area is Seasonally Wet                      |
|   | BS = Blanket Spraying                                   | PR = Prairie - Consult with R.E.                  |
|   | SS* = May Require Hand Spray/Back Pack                  | Edges = Spray mowed edge only & consult with R.E. |
|   | TSL = Teasel  | Heavy = Heavy Infestation                         |
|   | THSL = Thistle  | SRRA = Spoon River Rest Area                      |
|   | CV = Crown Vetch  | STP = Steep Hillside                              |
|   | FL = Fence Line   | (*) = For Information Only                        |
|   | (++) = Engineer must be present during spray operations |   |

NOT TO SCALE

MODEL: Default  
 FILE: Model: p:\pub\barroom.dwg  
 PROJECT: I-74/KICKAPOO/EDWARDS INTERCHANGE  
 SHEET: 8 OF 21  
 DATE: 10/24/2019

USER NAME = eversct	DESIGNED -	REVISED -
	DRAWN -	REVISED -
PLOT SCALE = 100,0000' / in.	CHECKED -	REVISED -
PLOT DATE = 10/24/2019	DATE -	REVISED -

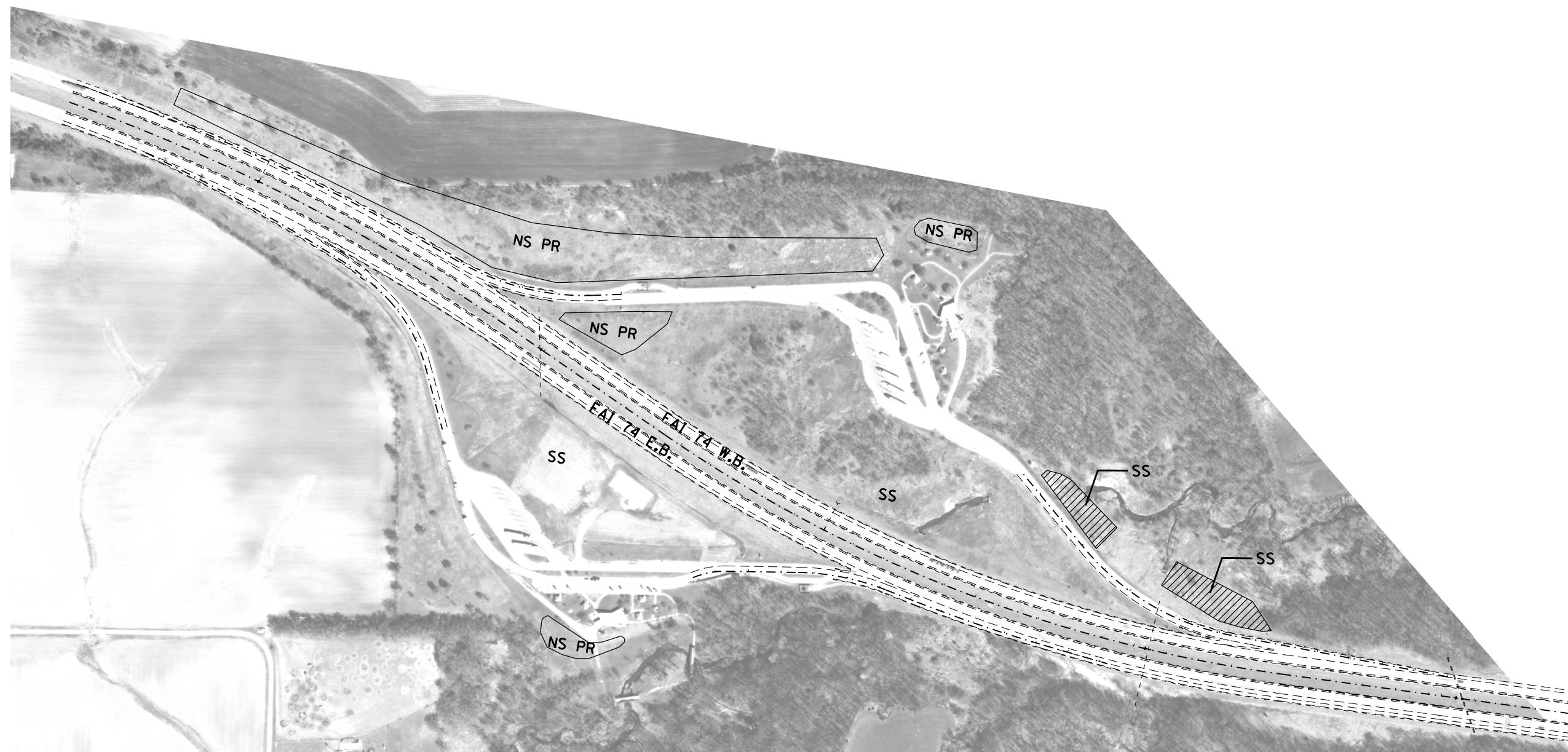
**STATE OF ILLINOIS  
DEPARTMENT OF TRANSPORTATION**

**LOCATION MAP (EXIT 82)  
I-74 /KICKAPOO /EDWARDS INTERCHANGE**

SCALE: SHEET OF SHEETS STA. TO STA.

F.A. RTE.	SECTION	COUNTY	TOTAL SHEETS	SHEET NO.
VAR.	D4 WEED SPRAYING 2020	VARIES	21	8
			CONTRACT NO. 68F13	
		ILLINOIS	FED. AID PROJECT	





**LEGEND**



SS = Spot Spraying

BR = Brush



BS = Blanket Spraying

SS\* = May Require Hand Spray/Back

Pack

TSL = Teasel

THSL = Thistle

CV = Crown Vetch

FL = Fence Line

(++) = Engineer must be present during spray operations

NS = No Spray

Wet = Area is Seasonally Wet

PR = Prairie - Consult with R.E.

Edges = Spray mowed edge only & consult with R.E.

Heavy = Heavy Infestation

SRRA = Spoon River Rest Area

STP = Steep Hillside

(\*) = For Information Only

NOT TO SCALE

MODEL: Default  
 FILE: Model: 68F13\CADD\Drawings\DOT\_Offices\Drawings\68F13\CADD\Drawings\DOT\_Offices\Drawings\68F13\WORKING-CADD.dwg

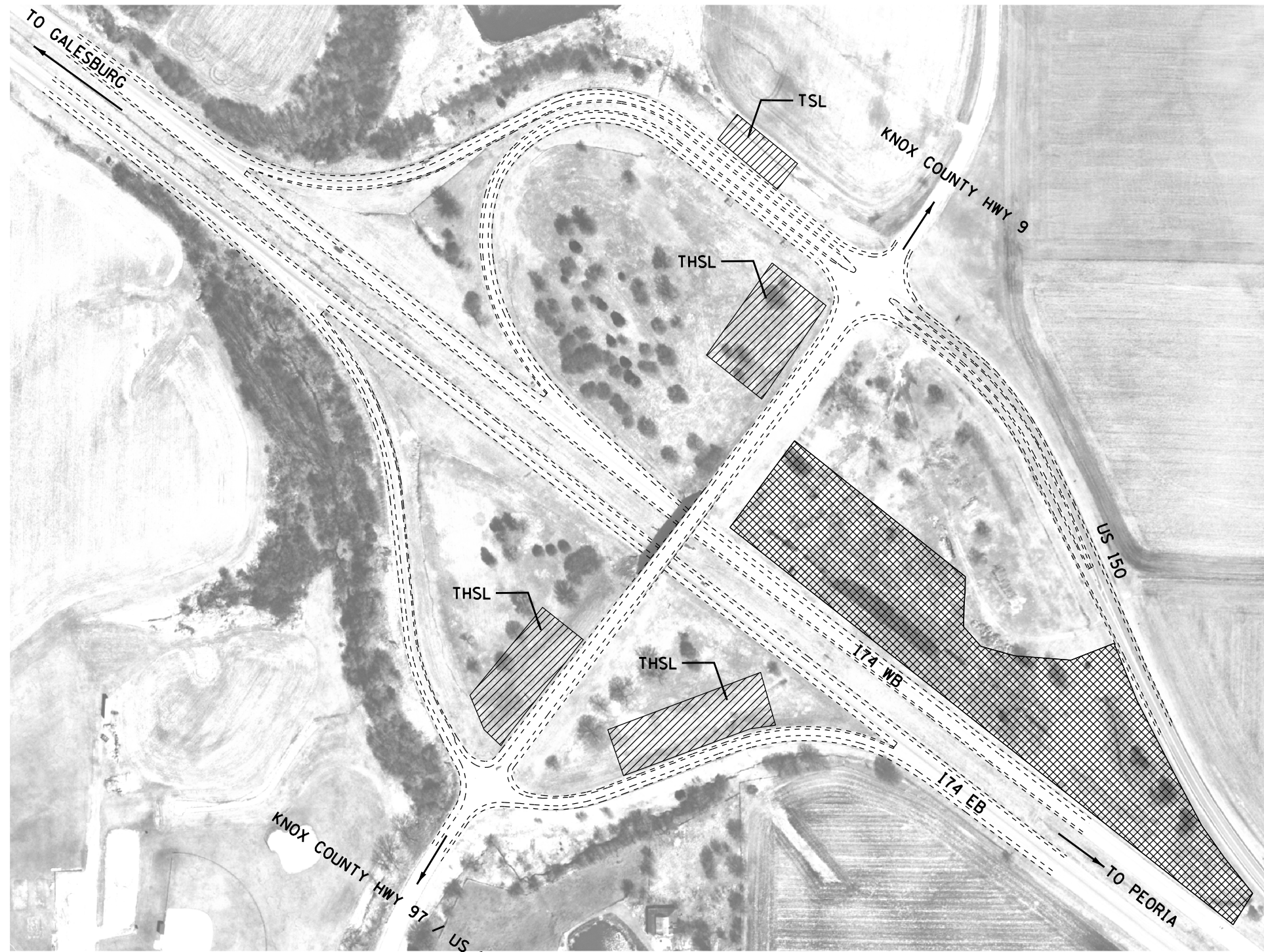
USER NAME = eversct	DESIGNED -	REVISED -
	DRAWN -	REVISED -
PLOT SCALE = 100,0000' / in.	CHECKED -	REVISED -
PLOT DATE = 10/24/2019	DATE -	REVISED -

**STATE OF ILLINOIS  
DEPARTMENT OF TRANSPORTATION**

**LOCATION MAP (MM62)  
I-74 SPOON RIVER REST AREA**

SCALE: SHEET OF SHEETS STA. TO STA.

F.A. RTE.	SECTION	COUNTY	TOTAL SHEETS	SHEET NO.
VAR.	D4 WEEK SPRAYING 2020	VARIOUS	21	9
			CONTRACT NO. 68F13	
		ILLINOIS	FED. AID PROJECT	



**LEGEND**

- SS = Spot Spraying
- BR = Brush
- BS = Blanket Spraying
- SS\* = May Require Hand Spray/Back Pack
- TSL = Teasel
- THSL = Thistle
- CV = Crown Vetch
- FL = Fence Line
- (++) = Engineer must be present during spray operations
- NS = No Spray
- Wet = Area is Seasonally Wet
- PR = Prairie - Consult with R.E.
- Edges = Spray mowed edge only & consult with R.E.
- Heavy = Heavy Infestation
- SRRA = Spoon River Rest Area
- STP = Steep Hillside
- (\*) = For Information Only

NOT TO SCALE

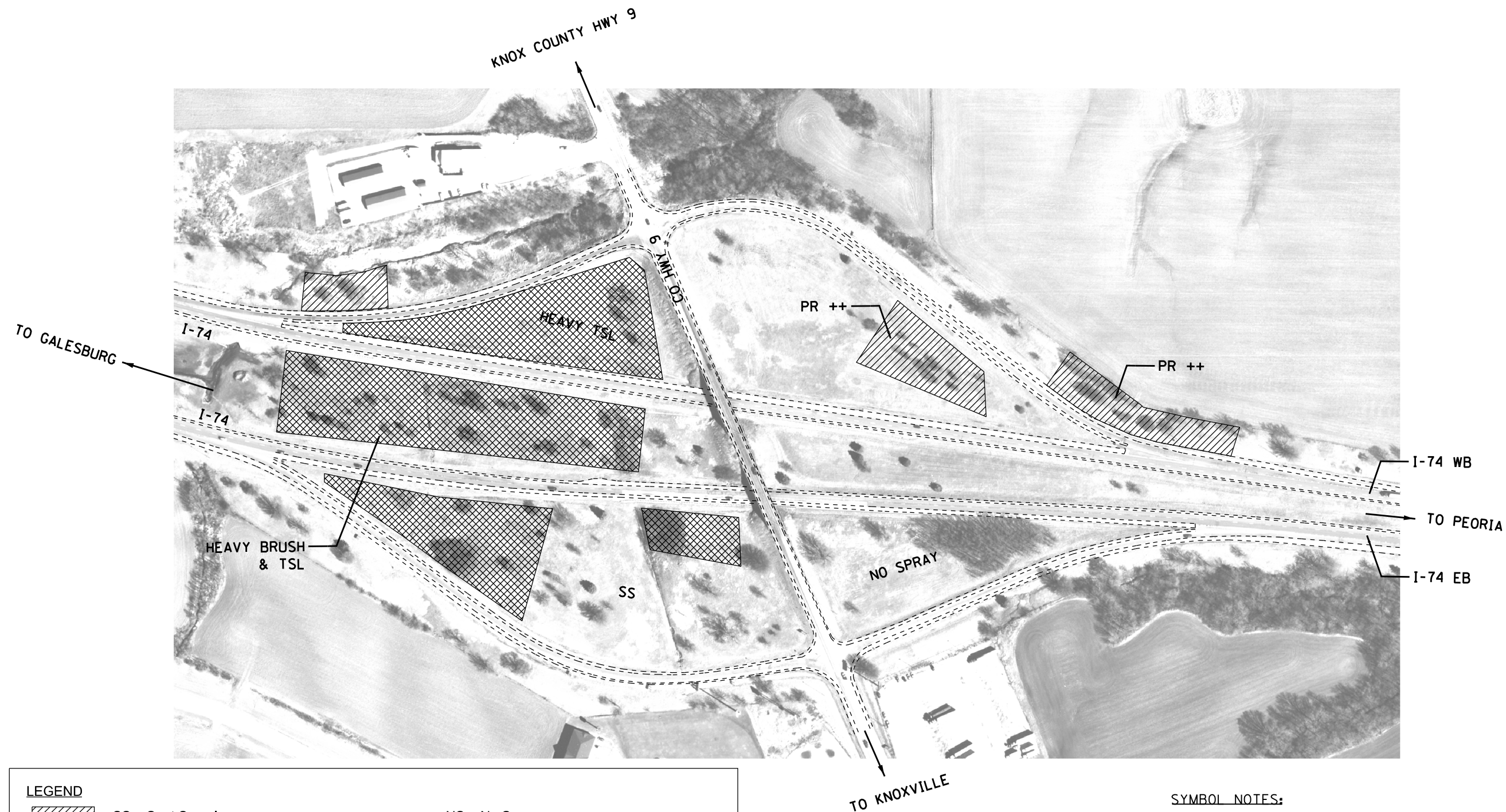
MODEL: Default  
 FILE: \\nrcs-pub\pubroom\dat\illinois\pwr\DOT\Documents\DOT\_Offices\District\_4\Projects\I-74\_CO. HWY 97 & US 150\I-74\_CO. HWY 97 & US 150\I-74\_CO. HWY 97 & US 150.dwg

USER NAME = eversct	DESIGNED -	REVISED -
	DRAWN -	REVISED -
PLOT SCALE = 100,0000' / in.	CHECKED -	REVISED -
PLOT DATE = 10/24/2019	DATE -	REVISED -

**STATE OF ILLINOIS  
 DEPARTMENT OF TRANSPORTATION**

<b>LOCATION MAP (EXIT 54)          I-74 / CO. HWY 97 &amp; US 150 INTERCHANGE</b>			
SCALE:	SHEET	OF	SHEETS
	STA.	TO	STA.

F.A. RTE.	SECTION	COUNTY	TOTAL SHEETS	SHEET NO.
VAR.	D4 WEED SPRAYING 2020	VARIOUS	21	10
CONTRACT NO. 68F13				
ILLINOIS		FED. AID PROJECT		



**LEGEND**

- |  |   |   |
|--|---|---|
|  | SS = Spot Spraying                                      | NS = No Spray                                     |
|  | BR = Brush  | Wet = Area is Seasonally Wet                      |
|  | BS = Blanket Spraying                                   | PR = Prairie - Consult with R.E.                  |
|  | SS* = May Require Hand Spray/Back Pack                  | Edges = Spray mowed edge only & consult with R.E. |
|  | TSL = Teasel  | Heavy = Heavy Infestation                         |
|  | THSL = Thistle  | SRRRA = Spoon River Rest Area                     |
|  | CV = Crown Vetch  | STP = Steep Hillside                              |
|  | FL = Fence Line   | (*) = For Information Only                        |
|  | (++) = Engineer must be present during spray operations |   |

**SYMBOL NOTES:**

1. INFIELDS ON NE & NW HAVE GOOD PRAIRIE, SPOT SPRAY TEASEL COLONIES AND INDIVIDUAL SPROUTS ONLY.
2. BLANKET SPRAY ONLY DESIGNATED AREAS.

NOT TO SCALE

MODEL: Default  
 FILE: \\nrcs\pub\baronm.d\at\illinois.gov\PIWDOT\Documents\DOT\_Offices\District\_4\Projects\I-74\_KNOXVILLE\_INTERCHANGE\I-74\_KNOXVILLE\_INTERCHANGE\_CADD.dgn

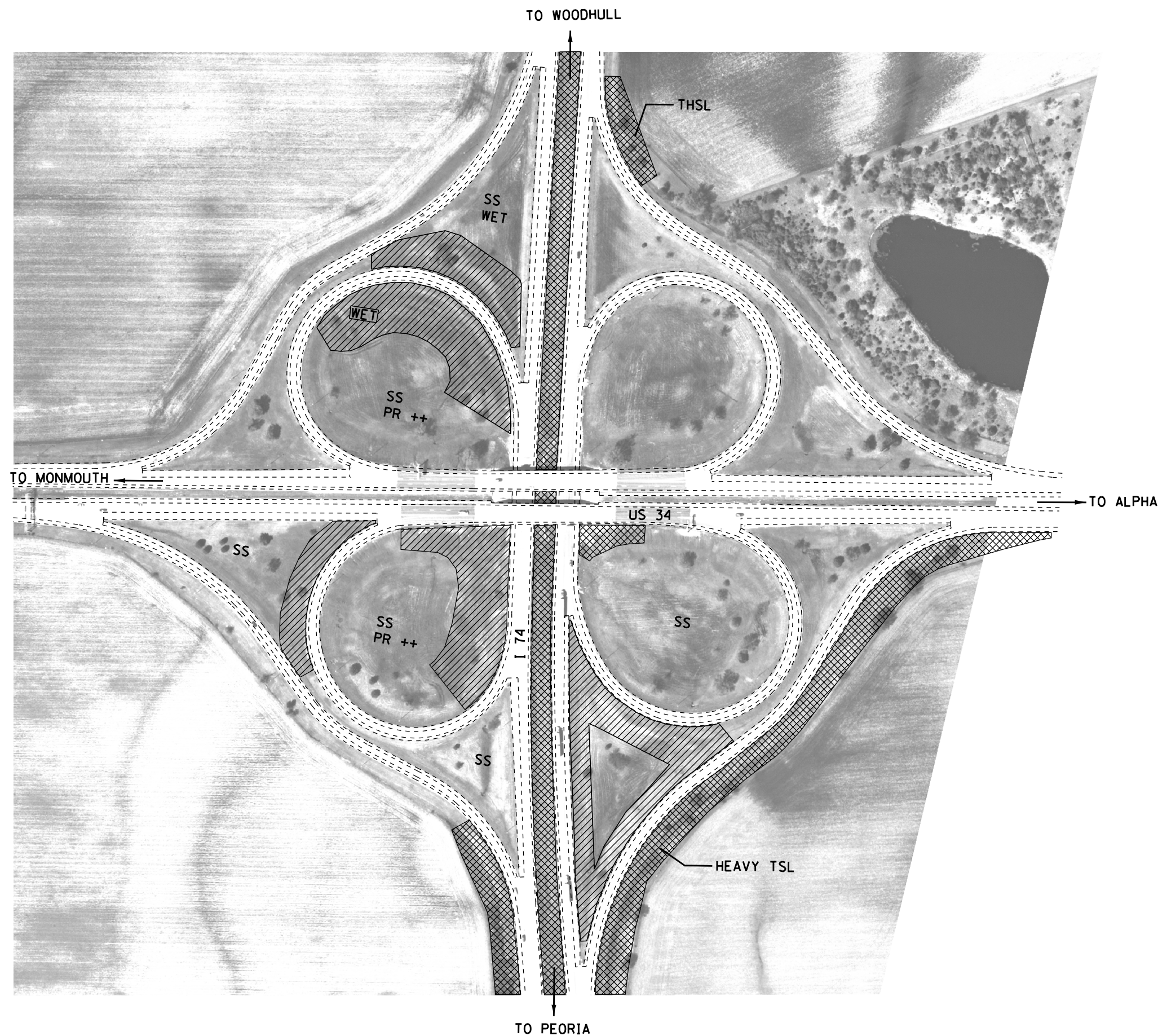
USER NAME = eversct	DESIGNED -	REVISED -
	DRAWN -	REVISED -
PLOT SCALE = 100,0000' / in.	CHECKED -	REVISED -
PLOT DATE = 10/24/2019	DATE -	REVISED -

**STATE OF ILLINOIS  
DEPARTMENT OF TRANSPORTATION**

**LOCATION MAP (EXIT 51)  
I-74 /KNOXVILLE INTERCHANGE**

SCALE: SHEET OF SHEETS STA. TO STA.

F.A. RTE.	SECTION	COUNTY	TOTAL SHEETS	SHEET NO.
VAR.	D4 WEED SPRAYING 2020	VARIOUS	21	11
			CONTRACT NO. 68F13	
		ILLINOIS	FED. AID PROJECT	



**SYMBOL NOTES:**  
 1. NE & NW INFIELDS MAY BE WET.

**LEGEND**

- SS = Spot Spraying
- BR = Brush
- BS = Blanket Spraying
- SS\* = May Require Hand Spray/Back Pack
- TSL = Teasel
- THSL = Thistle
- CV = Crown Vetch
- FL = Fence Line
- (++) = Engineer must be present during spray operations
- NS = No Spray
- Wet = Area is Seasonally Wet
- PR = Prairie - Consult with R.E.
- Edges = Spray mowed edge only & consult with R.E.
- Heavy = Heavy Infestation
- SRRA = Spoon River Rest Area
- STP = Steep Hillside
- (\*) = For Information Only

NOT TO SCALE

MODEL: Default  
 FILE: \\p101bancoms.dta.illinois.gov\PI\DOT\Documents\DOT\_Offices\District\_4\Projects\I-74\_68F13\CADD\Drawings\I-74\_68F13\W08R11G-CADD.dgn

USER NAME = eversct	DESIGNED -	REVISED -
	DRAWN -	REVISED -
PLOT SCALE = 100,0000' / in.	CHECKED -	REVISED -
PLOT DATE = 10/24/2019	DATE -	REVISED -

**STATE OF ILLINOIS  
 DEPARTMENT OF TRANSPORTATION**

**LOCATION MAP (EXIT 46B & 46A)  
 I-74 /US 34 INTERCHANGE**

SCALE: SHEET OF SHEETS STA. TO STA.



F.A. RTE.	SECTION	COUNTY	TOTAL SHEETS	SHEET NO.
VAR.	D4 WEED SPRAYING 2020	VARIOUS	21	12
			CONTRACT NO. 68F13	
		ILLINOIS	FED. AID PROJECT	





ROUTE	TEAM SECTION	DIRECTION	LOCATION	COUNTY	APPROX. MILES	APPROX. ACRES		APPROX. OUNCES		NOTES
						ON-RD. *	OFF-RD.	ON-RD. *	OFF-RD.	
I-155	441	SB Infields/Ramps	<i>DO NOT BLANKET SPRAY</i>	MM 22 Exit (Townline Rd NW & SW Infields & Ramps)	TAZEWELL		15		90	SS, PR, Heavy TSL
I-155	441	Southbound		MM 20-19 SB	TAZEWELL	1	3		18	STP, SS
I-155	441	Southbound		MM 19.5 SB ( Mackinaw River)	TAZEWELL		10		60	BR, SS
I-155	441	Infields/Ramps		Hopedale Exit 19 (NW & SW Infields & Ramps)	TAZEWELL		15		90	SS, PR
I-155	441	Southbound		MM 18.5 SB	TAZEWELL		0.5		3	SS
I-155	441	Southbound		MM 17	TAZEWELL		1		6	STP, PR, SS
I-155	441	Southbound		MM 17.2 SB	TAZEWELL		2		12	SS
I-155	441	Infields/Ramps		MM 15 Exit (Delavan NW & SW Infields & Ramps)	TAZEWELL		10		60	SS
I-155	441	Infields		At Exit 10 (US HWY 136 ALL 4 infields)	TAZEWELL		9		54	SS
I-155	441	Northbound		MM 10.1 NB Ramp sides	TAZEWELL		3		18	SS, FL
I-155	441	NB/ Infields		Exit 15 (Delavan SE & NE Infields/Ramps)	TAZEWELL		5		30	
I-155	441	Northbound		MM 18-19 NB (Edges and Fence)	TAZEWELL	1	10		60	SS, FL
I-155	441	NB/ Infields		Hopedale Exit 19 (SE/NE Infields/ramps)	TAZEWELL		20		120	PR, SS
I-155	441	Northbound		MM 19.1-20 NB (Fenceline)	TAZEWELL	1	15		90	SS
I-155	441	Northbound		MM 20-22 NB	TAZEWELL	2	1		6	SS, FL
I-155	441	NB/ Infields		Exit 22 Townline Rd (SE/NE Infields/Ramps)	TAZEWELL		15		90	Heavy TSL
I-155	441	Northbound		MM 22-25 NB	TAZEWELL	3				NS Prairie
I-155	441	Infields/Ramp		Exit 25 (SE/NE Infields/Ramps to IL 9)	TAZEWELL		1		6	SS
<b>SUB-TOTAL</b>									<b>813</b>	

**LEGEND**

	SS = Spot Spraying	NS = No Spray
	BR = Brush	Wet = Area is Seasonally Wet
	BS = Blanket Spraying	PR = Prairie - Consult with R.E.
	SS* = May Require Hand Spray/Back Pack	Edges = Spray mowed edge only & consult with R.E.
	TSL = Teasel	Heavy = Heavy Infestation
	THSL = Thistle	SRRA = Spoon River Rest Area
	CV = Crown Vetch	STP = Steep Hillside
	FL = Fence Line	(*) = For Information Only
	(++) = Engineer must be present during spray operations	

MODEL: Default  
 FILE: \\nrcs-pub\pubroom\dat\infields\gov\PIWDOT\Documents\DOT\_Offices\Default.dwg  
 PROJECT: D4\_68F13\CADD\Drawn\CAD\Drawn\Infields\DOT\68F13\WORKING-CADD.dwg

USER NAME = eversct	DESIGNED -	REVISED -
	DRAWN -	REVISED -
PLOT SCALE = 100,0000' / in.	CHECKED -	REVISED -
PLOT DATE = 10/24/2019	DATE -	REVISED -

**STATE OF ILLINOIS  
DEPARTMENT OF TRANSPORTATION**

SCHEDULE OF QUANTITIES			
SCALE:	SHEET	OF	SHEETS

F.A. RTE.	SECTION	COUNTY	TOTAL SHEETS	SHEET NO.
VAR.	D4 WEED SPRAYING 2020	VARIOUS	21	15
CONTRACT NO. 68F13				
ILLINOIS FED. AID PROJECT				

ROUTE	TEAM SECTION	DIRECTION	LOCATION	COUNTY	APPROX. MILES	APPROX. ACRES		APPROX. OUNCES		NOTES
						ON-RD. *	OFF-RD.	ON-RD. *	OFF-RD.	
I-155	441	NB/ Infields	I-155	Exit 28 Broadway Rd (SE/NE Infields/Ramps)	TAZEWELL		5		30	SS
I-155	441	Infields/Exit	I-155	Exit 29 (Main St. Exit Ramp & Infield)	TAZEWELL		10		60	STP, BS
I-155	441	Infield/Ramp	I-155	MM 30 Entrance Ramp (Queenwood Infield & Ramp)	TAZEWELL		2		12	SS
I-155	441	Northbound	I-155	MM 30.1-30.9 NB	TAZEWELL	1	10		60	BS Exit Ramp
I-155	441	N.E. Infields	I-155	BIRCH WOOD EXIT 31 NE INFIELDS & RAMP	TAZEWELL	1	10		60	BS, SS
I-74	441	EastBound	I-74	MM 94 (Underpass) East Peoria (Head down river on ramp to get to Camp St.)	TAZEWELL	Underpasses to Cedar St.	2		12	SS,THSL
I-74	441	EastBound	I-74	MM 94/At Exit 94(Ramp to Washington St)	TAZEWELL		10		60	SS
I-74	441	EastBound	I-74	MM Exit 94/Entrance ramp to I-74 (Camp st. infield & EB infield)	TAZEWELL	Behind Jersey Walls	3		18	SS
I-74	441	EastBound	I-74	MM 95-96***	TAZEWELL		20		120	BS
I-74	441	Ramp	I-74	IL 8 Exit ex 95/96	TAZEWELL		5		30	SS
I-74	441	EastBound	I-74	MM 96 Exit 96 (Infield)	TAZEWELL	Exit Infield	8		48	Infield Exit Ramp
I-74	441	EastBound	I-74	MM 96-96.5	TAZEWELL	0.5	1		6	EDGES, BR
I-74	441	East Bound	I-74	MM 98-97 EB	TAZEWELL	1	5		30	SS
I-74	441	EastBound	I-74	MM 98 Pinecrest exit	TAZEWELL		10		60	Ramps, FL
I-74	441	EastBound	I-74	MM 99-100 (Infields) 474 interchange	TAZEWELL		40		240	SS
I-74	441	EastBound	I-74	MM 100-101 NS N of Ramps	TAZEWELL		20		120	Wet
I-74	441	EastBound	I-74	MM 101 (I-155)	TAZEWELL		1		6	Edges
I-74	441	infields/ramps	I-74	MM 102 Morton (SS)	TAZEWELL	Exit Infield	10		60	Ramps, THSL
I-74	441	infields/ramps	I-74	MM 103-104 (Exit Infield)	TAZEWELL		1		6	SS
I-74	441	Median	I-74	MM 104-106 (Median)	TAZEWELL	Median	1		6	SS
I-74	441	EB/Infields & Ramps	I-74	MM Exit 112 (IL 117)	WOODFORD	Exit Infield	8		48	Wet, Ramp
I-74	441	Median	I-74	MM 112-120 (Median)	WOODFORD	Median	10		60	Median Edges, Heavy
I-74	441	EastBound	I-74	MM 95-120	TAZEWELL	25	15		90	SS
I-74	441	infields/ramps	I-74	MM 120 (Ramps/Infield)	MCLEAN		20		120	STP
I-74	441	Westbound	I-74	MM 112-120	TAZEWELL	25	15		90	SS
I-74	441	Westbound/ Median	I-74	MM 118-114 Median (S of Lagoon)	TAZEWELL		15		90	Heavy TSL areas
I-74	441	WB Infields & Ramps	I-74	MM Exit 112 (IL 117)	TAZEWELL		5		30	Heavy TSL Exit Ramp
I-474	441	Infields	I-474	MM 15 (Infields)	TAZEWELL	Infields	8		48	Wet, STP
I-474	441	Westbound	I-474	MM 12 (NW Overpass)	TAZEWELL		4		24	SS
I-474	441	Westbound	I-474	MM 9.5 NS	TAZEWELL		2		12	STP
I-474	441	Westbound	I-474	Exit 9(To IL 29, Ramps, edges of infield)	TAZEWELL		5		30	STP, Wet
<b>SUB-TOTAL</b>									<b>1686</b>	

**Symbol Notes**

\*\*\* Colonies of THSL and TSL / brush in front of Bass Pro and behind shop malls.

**LEGEND**



SS = Spot Spraying

BR = Brush



BS = Blanket Spraying

SS\* = May Require Hand Spray/Back Pack

TSL = Teasel

THSL = Thistle

CV = Crown Vetch

FL = Fence Line

(++) = Engineer must be present during spray operations

NS = No Spray

Wet = Area is Seasonally Wet

PR = Prairie - Consult with R.E.

Edges = Spray mowed edge only & consult with R.E.

Heavy = Heavy Infestation

SRRA = Spoon River Rest Area

STP = Steep Hillside

(\*) = For Information Only

MODEL: Default  
FILE: \\nrcs\pub\baronm.d\at\links\gov\PIWDOT\Documents\DOT\_Offices\Illinois\Projects\I-474\I-474\WB\IB\IB-CAD.dwg

USER NAME = eversct	DESIGNED -	REVISED -
	DRAWN -	REVISED -
PLOT SCALE = 100,0000' / in.	CHECKED -	REVISED -
PLOT DATE = 10/24/2019	DATE -	REVISED -

**STATE OF ILLINOIS  
DEPARTMENT OF TRANSPORTATION**

**SCHEDULE OF QUANTITIES**

SCALE: SHEET OF SHEETS STA. TO STA.

F.A. RTE.	SECTION	COUNTY	TOTAL SHEETS	SHEET NO.
VAR.	D4 WEED SPRAYING 2020	VARIOUS	21	16
ILLINOIS FED. AID PROJECT			CONTRACT NO. 68F13	



ROUTE	TEAM SECTION	DIRECTION	LOCATION	COUNTY	APPROX. MILES	APPROX. ACRES		APPROX. OUNCES		NOTES
						ON-RD. *	OFF-RD.	ON-RD. *	OFF-RD.	
I-474	432	Median	I-474	PEORIA	7		20		120	SS
I-474	432	Westbound	I-474	PEORIA			10		60	Wet, SS, PR
I-474	432	WestBound	I-474	PEORIA			24		144	TSL
I-474	432	Westbound	I-474	PEORIA	0.1		1		6	
I-474	432	Westbound	I-474	PEORIA			10		60	
I-474	432	Westbound	I-474	PEORIA	1.5		10		60	
I-474	432	Infields/Ramps	I-474	PEORIA			10		60	STP
I-474	432	EastBound	I-474	PEORIA	8.25		5		30	SS
I-474	432	EastBound	I-474	PEORIA			10		60	TSL
I-474	432	EastBound	I-474	PEORIA			24		144	TSL
I-474	432	EastBound	I-474	PEORIA			10		60	SS, PR
IL 6	432	Infields/Ramps	IL 6/I-74/I-474	PEORIA			60		360	STP, SS
IL 6	432	Median	IL 6	PEORIA	5		10		60	SS
IL 6	432	Northbound	IL 6	PEORIA	3		9		54	SS, Wet Ditch
IL 6	432	Ramps	IL 6	PEORIA			5		30	Edges
IL 6	432	Infields/Ramps	IL 6 SB	PEORIA			25		150	Edges,PR
IL 6	432	Infields/Ramps	IL 6 SB	PEORIA			10		60	Edges ++, Spot spray middle
IL 6	432	Northbound	IL 6	PEORIA			5		30	STP, heavy TSL
IL 6	432	Northbound	IL 6	PEORIA	1		20		120	Wet Areas, TSL
IL 6	432	Intersection	IL 6	PEORIA			20		120	BS, Heavy TSL
IL 6 SB	432	Southbound	IL 6 SB	PEORIA			60		360	SS
IL 6 SB	432	Southbound	IL 6 SB	PEORIA	1		4		24	STP, SS*
IL 6 SB	432	Southbound	IL 6 SB	PEORIA	1		10		60	SS
IL 6 SB	432	Southbound	IL 6 SB	PEORIA	2		10		60	SS, Wet Ditch
IL 6 SB	432	Southbound	IL 6 SB	PEORIA			1		6	SS
IL 6 SB	432	Southbound	IL 6 SB	PEORIA			1		6	SS
IL 6 SB	432	Southbound	IL 6 SB	PEORIA			1		6	SS
IL 40	432		IL 40 (NB, SB)	PEORIA			20		120	SS (very spotty) Edges
<b>SUB-TOTAL</b>									<b>2430</b>	

**Symbol Notes**

\*\* Very good prairie NW quadrant. Spray TSL colonies only. No blanket spray

\*\*\* Very steep; pull 350 ft. of hose and hand spray

**LEGEND**



SS = Spot Spraying

BR = Brush



BS = Blanket Spraying

SS\* = May Require Hand Spray/Back Pack

TSL = Teasel

THSL = Thistle

CV = Crown Vetch

FL = Fence Line

(++) = Engineer must be present during spray operations

NS = No Spray

Wet = Area is Seasonally Wet

PR = Prairie - Consult with R.E.

Edges = Spray mowed edge only & consult with R.E.

Heavy = Heavy Infestation

SRRA = Spoon River Rest Area

STP = Steep Hillside

(\*) = For Information Only

MODEL: Default  
 FILE: \\s:\pub\baronm.d\at\illinois.gov\RWIDOT\Documents\DOT\_Offices\Illinois\Projects\ID4\_68F13\CADD\Drawings\CD\Drawings\CD468F13\WORKING-CD468F13.dwg

USER NAME = eversct	DESIGNED -	REVISED -
	DRAWN -	REVISED -
PLOT SCALE = 100,0000' / in.	CHECKED -	REVISED -
PLOT DATE = 10/24/2019	DATE -	REVISED -

**STATE OF ILLINOIS  
DEPARTMENT OF TRANSPORTATION**

**SCHEDULE OF QUANTITIES**

SCALE: SHEET OF SHEETS STA. TO STA.



F.A. RTE.	SECTION	COUNTY	TOTAL SHEETS	SHEET NO.
VAR.	D4 WEED SPRAYING 2020	VARIOUS	21	17
ILLINOIS FED. AID PROJECT			CONTRACT NO. 68F13	

ROUTE	TEAM SECTION	DIRECTION	LOCATION	COUNTY	APPROX. MILES	APPROX. ACRES		APPROX. OUNCES		NOTES
						ON-RD. *	OFF-RD.	ON-RD. *	OFF-RD.	
IL 29	432	NB/SB	IL 29	Peoria to Chillicothe	PEORIA	NB/SB		10	60	SS
IL 29	432	NB/SB	IL 29	IL 6 to US 150	PEORIA	NB/SB		10	60	SS
US 150	432		US 150	Glen St.-Willow Knolls Dr.	PEORIA	6		20	120	SS
US 24	432		US 24	N/O IL 6 - IL 29	PEORIA	20		5	30	
US 24	432		US 24	2 Mi. N. of IL 9 to Banner, Median	PEORIA	17		100	600	BR, SS
IL 9	432		IL 9	US 24-IL River (near Bridges)	PEORIA	5		20	120	SS; Edges
I-74	432	West Bound	I-74	MM 92-94 (Downtown Peoria Plantings)	PEORIA					No Spray
I-74	432	West Bound	I-74	Exit 92 / MM 92.5	PEORIA	0.5		5	30	BR, STP
I-74	432	West Bound	I-74	MM 92 EB****	PEORIA			1	6	SS, NS Bushes
I-74	432	West Bound	I-74	Exit 91 (University)	PEORIA			20	120	SS, CV, THSL, STP
I-74	432	West Bound	I-74	MM 90-93 EB/WB	PEORIA	3		10	60	
I-74	432	West Bound	I-74	Exit 90 (Gale Ave.)(paved gutters)(SEE DETAIL)	PEORIA			10	60	BR, SS* (See Detail)
I-74	432	West Bound	I-74	MM 90-89*****	PEORIA			1	6	SS, Heavy
I-74	432	West Bound	I-74	Exit 89 & 88	PEORIA			10	60	STP
I-74	432	West Bound	I-74	MM 89-91 EB	PEORIA			10	60	
I-74	432	West Bound	I-74	Exit 87 (Ramps) (SEE DETAIL)	PEORIA			20	120	PR, STP
I-74	432	West Bound	I-74	MM 87-88 (Median)	PEORIA			1	6	SS
I-74	432	West Bound	I-74	MM 85 EB/WB	PEORIA	Perennial bed	No spray under high tension power line ++			Perennial bed, PR No Spray ++
I-74	432	West Bound	I-74	MM 88-84 WB	PEORIA	4		12	72	Edges
I-74	432	West Bound	I-74	Spray brush on Gilles Rd.&Heinz Ln overpasses	PEORIA			10	60	
I-74	432	West Bound	I-74	MM 87-86 (Median)	PEORIA			10	60	Wet, Median
I-74	432	West Bound	I-74	MM 82-80 EB	PEORIA	2		5	30	
I-74	432	West Bound	I-74	Exit 82 (Kickapoo/Edwards) (SEE DETAIL)	PEORIA			15	90	PR, SS, Edges ++
I-74	432	West Bound	I-74	MM 76-82 (Median)	PEORIA	8		20	120	SS, Median Edges
I-74	432	West Bound	I-74	MM 75-82	PEORIA	7		10	60	BR, SS, FL
I-74	432	West Bound	I-74	Exit 75	PEORIA			10	60	SS
I-74	432	West Bound	I-74	MM 71-75 EB	PEORIA	4		10	60	SS, Edges
I-74	432	West Bound	I-74	MM 71-68 (Median Shoulder)	PEORIA	10		20	120	SS
I-74	432	West Bound	I-74	EB MM 74 WB (Canada THSL)	PEORIA			3	18	Hillside (by sign)
I-74	432	West Bound	I-74	EB Exit 71 (Ramps/Edges)	PEORIA			8	48	SS Ramps/Edges, PR Infields ++
<b>SUB-TOTAL</b>									<b>2316</b>	

**Symbol Notes**

- \*\*\*\* No spray above retaining walls shrubs on sound walls. **No spray mm 92.5-93 EB & WB.**
- \*\*\*\*\* Large amount of TSL and brush in NE Quadrant. Will require hand spraying.

**LEGEND**

	SS = Spot Spraying	NS = No Spray
	BR = Brush	Wet = Area is Seasonally Wet
	BS = Blanket Spraying	PR = Prairie - Consult with R.E.
	SS* = May Require Hand Spray/Back Pack	Edges = Spray mowed edge only & consult with R.E.
	TSL = Teasel	Heavy = Heavy Infestation
	THSL = Thistle	SRRA = Spoon River Rest Area
	CV = Crown Vetch	STP = Steep Hillside
	FL = Fence Line	(*) = For Information Only
	(++) = Engineer must be present during spray operations	

MODEL: Default  
 FILE: \\s:\p\pub\baronm.dwg  
 PROJECT: \\s:\p\pub\baronm.dwg  
 USER: eversct  
 DATE: 10/24/2019

USER NAME = eversct	DESIGNED -	REVISED -
	DRAWN -	REVISED -
PLOT SCALE = 100.0000 ' / in.	CHECKED -	REVISED -
PLOT DATE = 10/24/2019	DATE -	REVISED -

**STATE OF ILLINOIS  
DEPARTMENT OF TRANSPORTATION**

SCHEDULE OF QUANTITIES			
SCALE:	SHEET	OF	SHEETS

F.A. RTE.	SECTION	COUNTY	TOTAL SHEETS	SHEET NO.
VAR.	D4 WEED SPRAYING 2020	VARIOUS	21	18
CONTRACT NO. 68F13				
ILLINOIS FED. AID PROJECT				

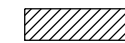
ROUTE	TEAM SECTION	DIRECTION	LOCATION	COUNTY	APPROX. MILES	APPROX. ACRES		APPROX. OUNCES		NOTES	
						ON-RD. *	OFF-RD.	ON-RD. *	OFF-RD.		
I-74	421	West Bound	I-74		MM 62-69	KNOX/PEORIA	7		40	240	BR, FL
I-74	421	West Bound	I-74		MM 62 WB SRRA** (See Detail)	KNOX			5	30	PR, TSL, STP ++
I-74	421	West Bound	I-74		WB MM 61-60	KNOX	1		5	30	
I-74	421	West Bound	I-74		No spray @ WB MM 58	KNOX	Perennial bed				Perennial bed, NS MM 58
I-74	421	West Bound	I-74		MM 59.5-58	KNOX	1.5		5	30	
I-74	421	West Bound	I-74		MM 54.8	KNOX			1	6	
I-74	421	Infields/Ramps	I-74		Exit 54, Median, (See Detail)	KNOX			20	120	THSL, TSL
I-74	421	West Bound	I-74		MM 51.5-50 (Median)	KNOX	1.5		5	30	SS, Median
I-74	421	West Bound	I-74		Exit 54 (See Detail) Knoxville	KNOX			40	240	TSL, PR ++
I-74	421	West Bound	I-74		MM 49-45 (Median)	KNOX	4		20	120	SS
I-74	421	West Bound	I-74		Exit 48 A & B Ramps and Infields	KNOX			10	60	SS
I-74	421	West Bound	I-74		MM 46-47.5	KNOX	1.5		3	18	
I-74	421	West Bound	I-74		MM 46-44 (Median)	KNOX	2		10	60	SS/Medians
I-74	421	West Bound	I-74		MM 40.1	KNOX			3	18	SS
I-74	421	West Bound	I-74		MM 39.2	KNOX			3	18	Hillside
I-74	421	E & W Bound	I-74		Henderson Creek	KNOX			20	120	SS
I-74	421	Median	I-74		MM 40-39 (Median)	KNOX	1		20	120	SS/Medians
I-74	421	West Bound	I-74		MM 37.5-34.9	KNOX	2.6		5	30	FL
I-74	421	E & W Bound	I-74		Pope Creek	KNOX			20	120	SS
I-74	421	Median	I-74		MM 36-34.5 (Median)	KNOX	2.5		20	120	SS/Medians
I-74	421	West Bound	I-74		MM 33.5	KNOX			1	6	Hillside
I-74	421	Infields/Ramps	I-74		Exit 32 WOODHULL *** ++	HENRY			20	120	SS, PR ++
I-74	421	East Bound	I-74		MM 32.5-33.1	KNOX	1.5		5	30	SS
I-74	421	East Bound	I-74		MM 35-36 EB (Median)	KNOX	1		10	60	Median
I-74	421	East Bound	I-74		MM 36.1	KNOX			2	12	SS
<b>SUB-TOTAL</b>									<b>1758</b>		

**Symbol Notes**

\*\* No spray NW quadrant of WB SRRA good prairie

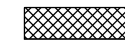
\*\*\* Spot spray TSL Rosette patches

**LEGEND**



SS = Spot Spraying

BR = Brush



BS = Blanket Spraying

SS\* = May Require Hand Spray/Back Pack

TSL = Teasel

THSL = Thistle

CV = Crown Vetch

FL = Fence Line

(++) = Engineer must be present during spray operations

NS = No Spray

Wet = Area is Seasonally Wet

PR = Prairie - Consult with R.E.

Edges = Spray mowed edge only & consult with R.E.

Heavy = Heavy Infestation

SRRA = Spoon River Rest Area

STP = Steep Hillside

(\*) = For Information Only

MODEL: Default  
FILE: \\nrcs-pub\pubroom.dta\illinois.gov\PWIDOT\Documents\DOT\_Offices\Illinois\Projects\IDM\_68F13\CADD\Drawings\CAD\Drawings\68F13\WDR\WDR-CADD.dgn

USER NAME = eversct	DESIGNED -	REVISED -
	DRAWN -	REVISED -
PLOT SCALE = 100,0000' / in.	CHECKED -	REVISED -
PLOT DATE = 10/24/2019	DATE -	REVISED -

**STATE OF ILLINOIS  
DEPARTMENT OF TRANSPORTATION**

**SCHEDULE OF QUANTITIES**

SCALE: SHEET OF SHEETS STA. TO STA.

F.A. RTE.	SECTION	COUNTY	TOTAL SHEETS	SHEET NO.
VAR.	D4 WEED SPRAYING 2020	VARIOUS	21	19
CONTRACT NO. 68F13				
ILLINOIS FED. AID PROJECT				

ROUTE	TEAM SECTION	DIRECTION	LOCATION	COUNTY	APPROX. MILES	APPROX. ACRES		APPROX. OUNCES		NOTES
						ON-RD. *	OFF-RD.	ON-RD. *	OFF-RD.	
I-74	421	East Bound	I-74	Exit 46 to US 34 (SE & SW infields/ramps)(See Detail)	KNOX		40		240	Wet, SS, ++
US 34	421	East Bound	US 34	74 East To Oneida (Median in 4 LN)	KNOX	15	20		120	SS, PR
US 34	421	Infields/Ramps	US 34	Seminary Street Exit (4 Infields/Ramps)	KNOX		20		120	SS
US 34	421	Infields/Ramps	US 34	Henderson Street Exit (See Detail)**	KNOX		20		120	PR, SS ++
US 34	421	Infields/Ramps	US 34	West Main Street Exit	KNOX		40		240	SS, EB exit ramp heavy TSL
US 34	421	E & W Bound	US 34	MM 0-8	KNOX	8	40		240	BS
US 34	421	West Bound	US 34	MM 15	WARREN		1		6	SS
US 150	421	North Bound	US 150	From US 34 to N. Lake Storey Rd	KNOX	0.6	5		30	BS
US 150	421	North Bound	US 150	STA 354+00 to 342+00 East and West side	KNOX	north of Oaklawn Cemetery	5		30	Heavy Rosettes
US 150	421	North Bound	US 150	500ft East & West of Knox Hwy 37 (2100)	KNOX		5		30	Heavy Rosettes
US 150	421	North Bound	US 150	Knox Rd 2350 to 500' south (west side of road)	KNOX		1		6	BS
US 150	421	North Bound	US 150	Sta 167+00 to 170+00 (Henderson Creek) East side	KNOX		10		60	BS
US 150	421	North Bound	US 150	600' South of Knox Rd 2900 to Knox County line	KNOX	1.2	20		120	SS Heavy TSL near Pope Creek
I-74	421	East Bound	I-74	MM 44-48	KNOX	4	10		60	
I-74	421	East Bound	I-74	MM 48.5-50	KNOX	1.5	25		150	SS
I-74	421	East Bound	I-74	Exit 48 (NW & SW Infields and Ramps)	KNOX		20		120	SS
I-74	421	Infields/Ramps	I-74	Exit 71 edges	PEORIA		10		60	++
<b>SUB-TOTAL</b>									<b>1752</b>	



**Symbol Notes**

\*\*No spray infields of good prairie

QUANTITIES	APPROX. OUNCES	GALLON*
SUB-TOTAL SHEET 14	2334	18
SUB-TOTAL SHEET 15	813	6
SUB-TOTAL SHEET 16	1686	13
SUB-TOTAL SHEET 17	2430	19
SUB-TOTAL SHEET 18	2316	18
SUB-TOTAL SHEET 19	1758	14
SUB-TOTAL SHEET 20	1752	14
<b>TOTAL</b>	<b>13051</b>	<b>102</b>

\* 128 OUNCE = 1 GALLON

**LEGEND**

	SS = Spot Spraying	NS = No Spray
	BR = Brush	Wet = Area is Seasonally Wet
	BS = Blanket Spraying	PR = Prairie - Consult with R.E.
	SS* = May Require Hand Spray/Back Pack	Edges = Spray mowed edge only & consult with R.E.
	TSL = Teasel	Heavy = Heavy Infestation
	THSL = Thistle	SRRA = Spoon River Rest Area
	CV = Crown Vetch	STP = Steep Hillside
	FL = Fence Line	(*) = For Information Only
	(++) = Engineer must be present during spray operations	

MODEL: Default  
FILE: \\nrcs\pub\baronm.dwg  
PROJECT: \\nrcs\pub\baronm.dwg  
OFFICE: \\nrcs\pub\baronm.dwg  
DATE: 10/24/2019

USER NAME = eversct	DESIGNED -	REVISED -
	DRAWN -	REVISED -
PLOT SCALE = 100,0000' / in.	CHECKED -	REVISED -
PLOT DATE = 10/24/2019	DATE -	REVISED -

**STATE OF ILLINOIS  
DEPARTMENT OF TRANSPORTATION**

**SCHEDULE OF QUANTITIES**

SCALE:	SHEET	OF	SHEETS	STA.	TO	STA.
--------	-------	----	--------	------	----	------

F.A. RTE.	SECTION	COUNTY	TOTAL SHEETS	SHEET NO.
VAR.	D4 WEED SPRAYING 2020	VARIOUS	21	20
CONTRACT NO. 68F13				
ILLINOIS FED. AID PROJECT				

**HERBICIDE DOSAGE CHART**

<b>WATER</b>	<b>MILESTONE VM*</b>	<b>DRIFT CONTROL**</b>	<b>NON-IONIC SURFACTANT***</b>	<b>ACRES OF R.O.W.</b>
<b>(GALLONS)</b>	<b>(OZ.)</b>	<b>(OZ.)</b>	<b>(PINTS)</b>	<b>ACRE</b>
40	6	3.2	0.8	1
50	7.5	4	1	1.25
100	15	8	2	2.5
200	30	16	4	5
300	45	24	6	7.5
400	60	32	8	10
500	75	40	10	12.5
600	90	48	12	15
700	105	56	14	17.5
800	120	64	16	20
900	135	72	18	22.5
1000	150	80	20	25
1100	165	88	22	27.5
1200	180	96	24	30
1300	195	104	26	32.5
1400	210	112	28	35
1500	225	120	30	37.5

- \* BASED ON 6 OUNCES OF MILESTONE VM FOR EACH 1.0 ACRE
- \*\* BASED ON 8 OUNCES OF DRIFT CONTROL AGENT PER 100 GALLONS
- \*\*\* BASED ON 2 PINTS OF NON-IONIC SURFACTANT FOR EACH 100 GALLONS OF WATER

**Notes:**

1. Suggested rate of water per acre. Refer to product label for verification.
2. Spraying machine shall be calibrated to deliver 6 oz of herbicide per acre 72 hr prior to job start.
3. Spot checks will be performed to check for herbicide delivery accuracy.

MODEL: Default  
 FILE: \\nas01c.pw.state.il.us\pub\baronm.d\dot\illinois.gov\PWIDOT\Documents\DOT\_Offices\District\_4\Projects\ID4\_68F13\CADD\Draw\CAD\Drawings\ID468F13\WORKING-CADD.dgn

USER NAME = eversct	DESIGNED -	REVISED -
	DRAWN -	REVISED -
PLOT SCALE = 100,0000 ' / in.	CHECKED -	REVISED -
PLOT DATE = 10/24/2019	DATE -	REVISED -

**STATE OF ILLINOIS  
DEPARTMENT OF TRANSPORTATION**

**HERBICIDE DOSAGE CHART**

SCALE: SHEET OF SHEETS STA. TO STA.

F.A. RTE.	SECTION	COUNTY	TOTAL SHEETS	SHEET NO.
VAR.	D4 WEED SPRAYING 2020	VARIOUS	21	21
			CONTRACT NO. 68F13	
		ILLINOIS	FED. AID PROJECT	