

101

01-17-2020 LETTING ITEM 101

STATE OF ILLINOIS  
DEPARTMENT OF TRANSPORTATION

F.A.I. RTE.	SECTION	COUNTY	TOTAL SHEETS	SHEET NO.
-	CJS-SANGAMON CO-2019	SANGAMON	19	1
		LINCOLN	CONTRACT NO. 72L25	

\* 55 72, & 72A  
**D-96-047-19**

FOR INDEX OF SHEETS, SEE SHEET NO. 2

HIGHWAY CLASSIFICATION

F.A.I. ROUTE 55 (I-55) (AREA #1)  
fr. 0.2 Mi. N of Soundwind Rd. Ovrhd. to 0.4 Mi. N of Lake Sprfld Bridge  
CLASSIFICATION: INTERSTATE  
ADT: 54,400 (2017) PV = 77.48%  
DESIGN SPEED: 75 MPH SU = 9.28%  
POSTED SPEED: 70 MPH MU = 13.24%

F.A.I. ROUTE 72A (I-72A) (AREA #4)  
fr. 0.5 Mi. W of Old US 36 Ovrhd. to 0.5 Mi. E of Overpass Rd. Ovrhd.  
CLASSIFICATION: INTERSTATE  
ADT: 15,900 (2017) PV = 81.76%  
DESIGN SPEED: 75 MPH SU = 3.46%  
POSTED SPEED: 70 MPH MU = 14.78%

F.A.I. ROUTE 72 (I-72) (AREA #2)  
fr. 0.5 Mi. W of Waverly Rd. Ovrhd. to Farmingdale Rd. Ovrhd.  
CLASSIFICATION: INTERSTATE  
ADT: 17,600 (2017) PV = 76.43%  
DESIGN SPEED: 75 MPH SU = 7.95%  
POSTED SPEED: 70 MPH MU = 15.62%

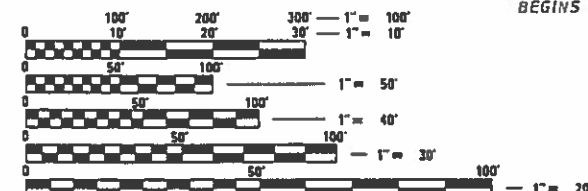
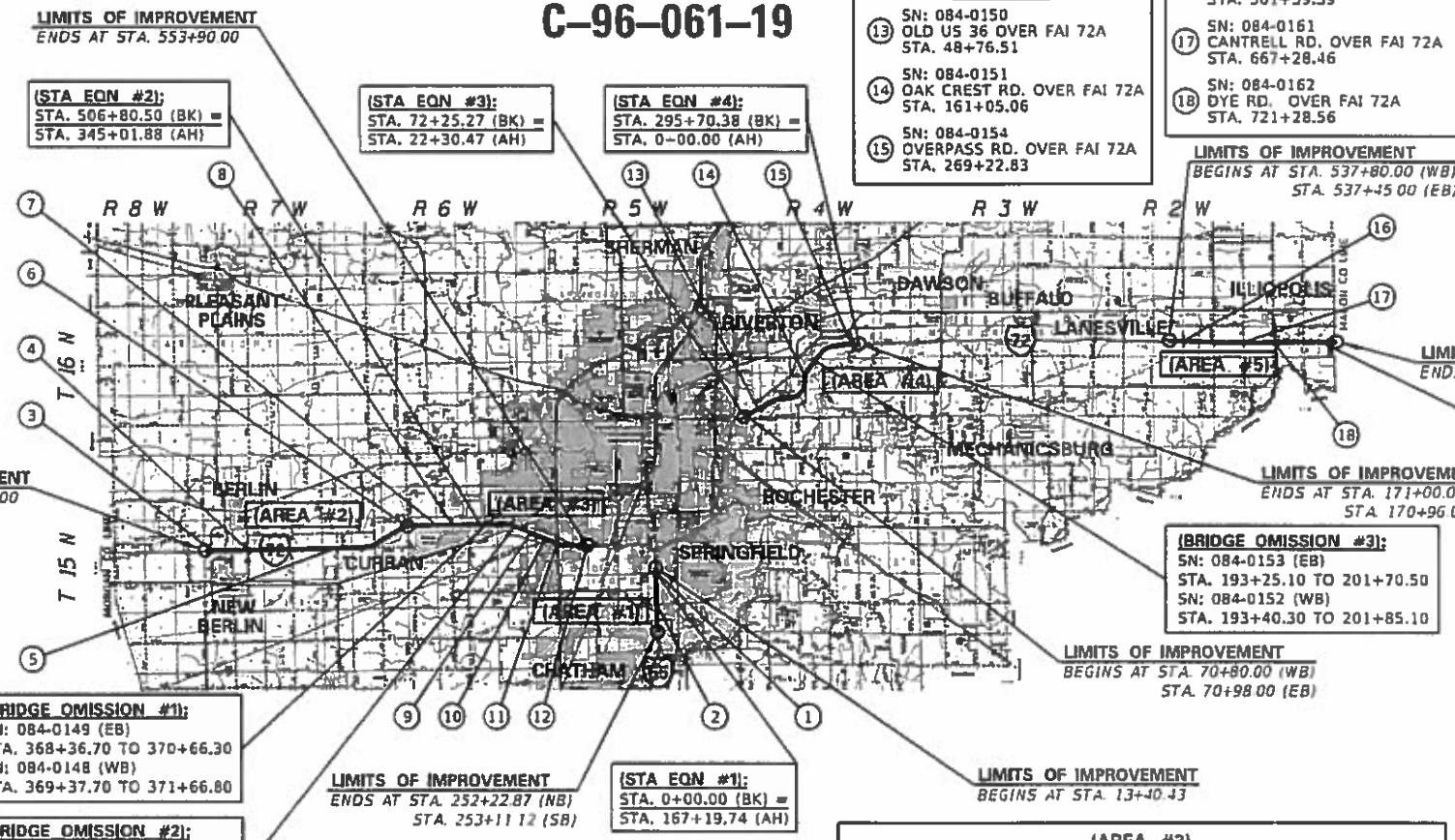
F.A.I. ROUTE 72A (I-72A) (AREA #5)  
fr. 0.5 Mi. W of Kent Farm Rd. Ovrhd. to Macon County Line  
CLASSIFICATION: INTERSTATE  
ADT: 15,300 (2017) PV = 79.74%  
DESIGN SPEED: 75 MPH SU = 3.27%  
POSTED SPEED: 70 MPH MU = 16.99%

F.A.I. ROUTE 72 (I-72) (AREA #3)  
Farmingdale Rd. Ovrhd. to W of Old Chatham Rd. Ovrhd.  
CLASSIFICATION: INTERSTATE  
ADT: 22,500 (2017) PV = 78.22%  
DESIGN SPEED: 75 MPH SU = 8.89%  
POSTED SPEED: 70 MPH MU = 12.89%

# PROPOSED HIGHWAY PLANS

## F.A.I. ROUTE 55, 72, 72A (I 55, 72, 72A) SECTION CJS-SANGAMON CO-2019 PROJECT NHPP-NQB1(400) CRACK & JOINT SEALING SANGAMON COUNTY

C-96-061-19



FULL SIZE PLANS HAVE BEEN PREPARED USING STANDARD ENGINEERING SCALES. REDUCED SIZED PLANS WILL NOT CONFORM TO STANDARD SCALES. IN MAKING MEASUREMENTS ON REDUCED PLANS, THE ABOVE SCALES MAY BE USED.

J.U.L.I.E.  
JOINT UTILITY LOCATION INFORMATION FOR EXCAVATORS  
1-800-892-0123  
OR 811

PROJECT ENGINEER: JAY WAVERING (217) 785-9046  
PROJECT MANAGER: RENE CABRERA (217) 558-5140

CONTRACT NO. 72L25

GROSS LENGTH = 136,753.19 FT = 25.90 MI  
NET LENGTH = 134,993.39 FT = 25.57 MI

STATE OF ILLINOIS  
DEPARTMENT OF TRANSPORTATION

SUBMITTED *October 16, 2019*

*[Signature]* REGIONAL ENGINEER

*[Signature]* ENGINEER OF DESIGN AND ENVIRONMENT

*[Signature]* DIRECTOR OF HIGHWAYS PROJECT IMPLEMENTATION 3

PRINTED BY THE AUTHORITY OF THE STATE OF ILLINOIS

# GENERAL NOTES

## GENERAL NOTES

### INDEX OF SHEETS

- 1 COVER SHEET
- 2 INDEX OF SHEETS, LISTS OF STANDARDS, GENERAL NOTES AND COMMITMENTS
- 3 SUMMARY OF QUANTITIES
- 4 - 5 SCHEDULE OF QUANTITIES (2)
- 6 - 10 TYPICAL SECTIONS (5)
- 11 - 18 PLAN SHEETS (8)
- 19 CRACK/JOINT SEAL DETAIL

### STANDARDS

- 000001-07 STANDARD SYMBOLS, ABBREVIATIONS, AND PATTERNS
- 001006 DECIMAL OF AN INCH AND OF A FOOT
- 701101-05 OFF-ROAD OPERATIONS, MULTILANE, 15' (4.5 m) TO 24" (600mm) FROM EDGE OF PAVEMENT
- 701106-02 OFF-ROAD OPERATIONS, MULTILANE, MORE THAN 15' (4.5 m) AWAY
- 701400-09 APPROACH TO LANE CLOSURE, FREEWAY/EXPRESSWAY
- 701401-12 LANE CLOSURE, FREEWAY/EXPRESSWAY
- 701406-12 LANE CLOSURE, FREEWAY/EXPRESSWAY, DAY OPERATION ONLY
- 701411-09 LANE CLOSURE, MULTILANE, AT ENTRANCE OR EXIT RAMP, FOR SPEEDS ≥ 45 MPH
- 701426-09 LANE CLOSURE, MULTILANE, INTERMITTENT OR MOVING OPERATION, FOR SPEEDS ≥ 45 MPH
- 701428-01 TRAFFIC CONTROL SETUP AND REMOVAL FREEWAY / EXPRESSWAY
- 701446-10 TWO LANE CLOSURE, FREEWAY / EXPRESSWAY
- 701901-08 TRAFFIC CONTROL DEVICES

### RATES OF APPLICATION TABLES

THE FOLLOWING RATES OF APPLICATION HAVE BEEN ASSUMED IN CALCULATING PLAN QUANTITIES.

CRACK FILLING: 0.18 LBS / FT (Longitudinal & Transverse Cracking)

### COMMITMENTS

(NONE)

DISTRICT SIX			
EXAMINED	9/23	20	19
<i>[Signature]</i>			
OPERATIONS ENGINEER			
EXAMINED	9-24	20	19
<i>[Signature]</i>			
PROJECT IMPLEMENTATION ENGINEER			
EXAMINED	October 4	20	19
<i>[Signature]</i>			
PROGRAM DEVELOPMENT ENGINEER			

REV. - MS

MODEL: C:\ibm\...  
 FILE: 10/1/2019...

USLR NAME = cabrerars DESIGNED - RSC DRAWN - RSC CHECKED - DATE -	REVISIONS REVISED - REVISED - REVISED - REVISED -	<b>STATE OF ILLINOIS DEPARTMENT OF TRANSPORTATION</b>	<b>INDEX OF SHEETS &amp; GENERAL NOTES</b> SCALE: NTS SHEET 1 OF 1 SHEETS STA. TO STA.	F.A.I. RTE. SECTION COUNTY TOTAL SHEETS SHEET NO. CJS - SANGAMON CO - 20 SANGAMON 19 2 CONTRACT NO. 72L25
---	---	---	---	---

CODE NO.	ITEM	UNIT	TOTAL QUANTITY	6-01262-0100	6-01262-0000
				90% FEDERAL 10% STATE ROADWAY 0005 URBAN	90% FEDERAL 10% STATE ROADWAY 0005 RURAL
45100100	CRACK ROUTING (PAVEMENT)	FOOT	14,473	9,867	4,606
45100200	CRACK FILLING	POUND	56,411	31,562	24,849
67100100	MOBILIZATION	L SUM	1	0.5	0.5
70100420	TRAFFIC CONTROL AND PROTECTION, STANDARD 701411	EACH	29	21	8
70100700	TRAFFIC CONTROL AND PROTECTION, STANDARD 701406	L SUM	1		1
70100800	TRAFFIC CONTROL AND PROTECTION, STANDARD 701401	L SUM	1	1	
70100815	TRAFFIC CONTROL AND PROTECTION, STANDARD 701446	L SUM	1	1	
70107025	CHANGEABLE MESSAGE SIGN	CAL DA	45	25	20
70200100	NIGHTTIME WORK ZONE LIGHTING	L SUM	1	0.5	0.5

MODEL: Default  
 FILE: Model: Proj\pub\lanroom.dwg  
 I:\links\gov\PI\DOT\Documents\DOT\_Offices\District\_6\Projects\0672125\CADD\DATA\CAD\Sheets\0672125-rh-500.dgn

USER NAME = cabrerars	DESIGNED - RSC	REVISED -
	DRAWN - RSC	REVISED -
PLOT SCALE = 100.0000 ' / in.	CHECKED -	REVISED -
PLOT DATE = 10/2/2019	DATE -	REVISED -

**STATE OF ILLINOIS  
DEPARTMENT OF TRANSPORTATION**

**SUMMARY OF QUANTITIES**

SCALE: NTS      SHEET 1 OF 1 SHEETS      STA.      TO STA.

F.A.I. RTE.	SECTION	COUNTY	TOTAL SHEETS	SHEET NO.
*	CJS - SANGAMON CO - 20	SANGAMON	19	3
			CONTRACT NO. 72L25	
		ILLINOIS	FED. AID PROJECT	

\* I-55, I-72, & I-72A

**CRACK FILLING SCHEDULE**

Table with columns: LOCATION, LENGTH, JOINTS, COEF., DESCRIPTION, (45100200) CRACK FILLING. Includes entries for AREA #1 and AREA #2 with various stationing and descriptions.

**CRACK FILLING SCHEDULE (cont.)**

Table with columns: LOCATION, LENGTH, JOINTS, COEF., DESCRIPTION, (45100200) CRACK FILLING. Includes entries for AREA #3 and AREA #4 with various stationing and descriptions.

**CRACK FILLING SCHEDULE (cont.)**

Table with columns: LOCATION, LENGTH, JOINTS, COEF., DESCRIPTION, (45100200) CRACK FILLING. Includes entries for AREA #4 and AREA #5 with various stationing and descriptions.

**TRAFFIC CONTROL & PROTECTION, STANDARD 701411**

Table with columns: LOCATION, QUANTITY (EACH), (70100420). Includes entries for AREA #1, AREA #2, AREA #3, AREA #4, and AREA #5.

MODEL: Default FILE: \\nrc-px10\planroom\dta\illinois\pwp\DOT\Documents\DOT\_Offices\Illtct\_6\Projects\0672125\CADDData\CAD\Sheet0672125-sh-ctschd.tbl

Table with columns: USER NAME, DESIGNED, DRAWN, PLOT SCALE, PLOT DATE, RSC, RSC, CHECKED, DATE, REVISED, REVISED.

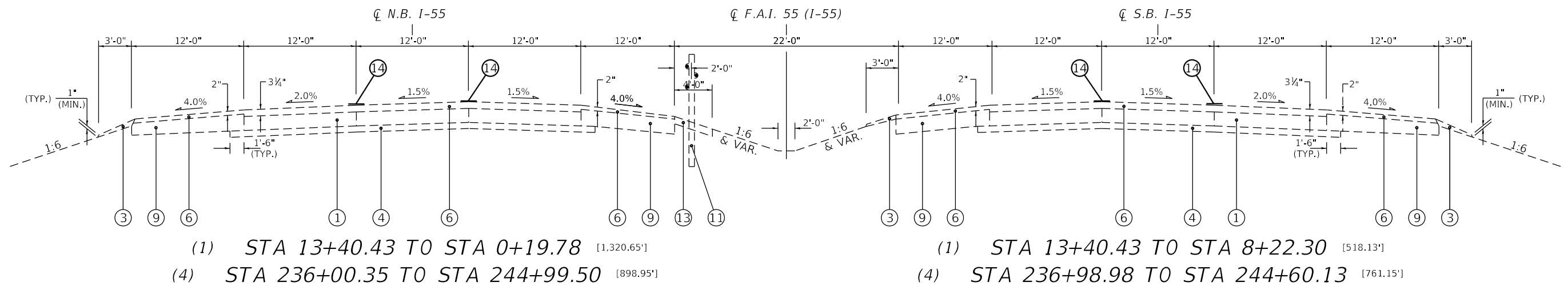
**STATE OF ILLINOIS DEPARTMENT OF TRANSPORTATION**

**SCHEDULE OF QUANTITIES**

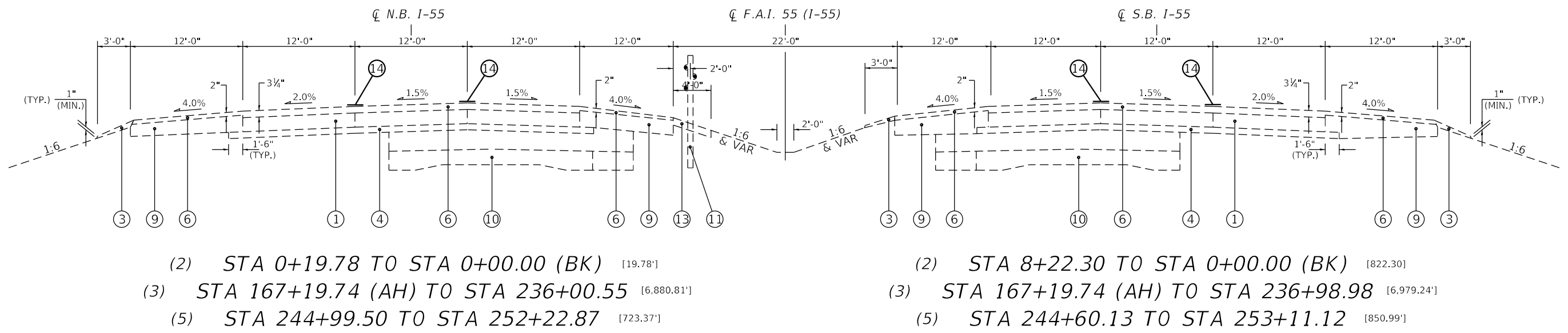
Table with columns: SCALE, SHEET, OF, SHEETS, STA., TO STA., ILLINOIS, FED. AID PROJECT, F.A.I. RTE., SECTION, COUNTY, TOTAL SHEETS, SHEET NO., CONTRACT NO.

\* I-55, I-72, & I-72A





(STA EQN #1):  
 STA 0+00.00 (BK) =  
 STA 167+19.74 (AH)



LEGEND	
①	EXIST. CRCP PAVEMENT 8"
②	EXIST. HOT-MIX ASPHALT SHOULDER OVERLAY
③	EXIST. AGG SHOULDER
④	EXIST. SUB-BASE GRANULAR MATERIAL, 4"
⑤	EXIST. PIPE UNDERDRAINS
⑥	EXIST. HOT-MIX ASPHALT OVERLAY
⑦	EXIST. BITUMINOUS SHOULDER 11 1/4"
⑧	EXIST. LONGITUDINAL JOINT
⑨	EXIST. BITUMINOUS SHOULDERS, 8"
⑩	EXIST. BURIED PAVEMENT
⑪	EXIST. CABLE BARRIER
⑫	EXIST. HOT-MIX ASPHALT SHOULDER 13"
⑬	EXIST. BITUMINOUS SHOULDER SUPERPAVE, 4"
⑭	PROP. CRACK SEAL

(AREA #1)

MODEL: Default  
 FILE: \\nrcs.pw.com\pub\room\dat\illinois.gov\PWIDOT\Documents\DOT\_Offices\Director @Projects\0672125\CADD\data\CAD\sheet\0672125-ah-1-72a.dwg

USER NAME = cabrerars	DESIGNED - CEB	REVISED -
	DRAWN - CEB	REVISED -
PLOT SCALE = 100.0000' / in.	CHECKED - RSC	REVISED -
PLOT DATE = 9/19/2019	DATE -	REVISED -

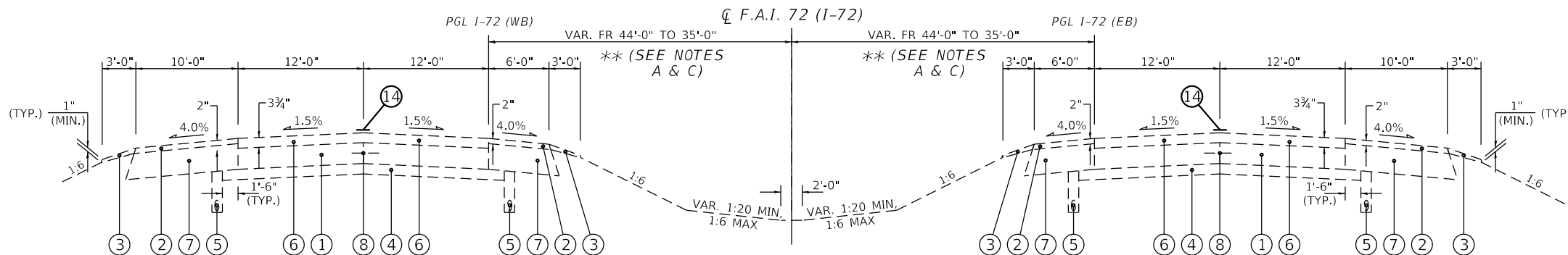
STATE OF ILLINOIS  
 DEPARTMENT OF TRANSPORTATION

TYPICAL SECTIONS

SCALE: NTS SHEET 1 OF 5 SHEETS STA. 13+40.43 TO STA. 253+11.12

F.A.I. RTE.	SECTION	COUNTY	TOTAL SHEETS	SHEET NO.
*	CJS - SANGAMON CO - 20	SANGAMON	19	6
CONTRACT NO. 72L25				
ILLINOIS FED. AID PROJECT				

\* I-55, I-72, & I-72A

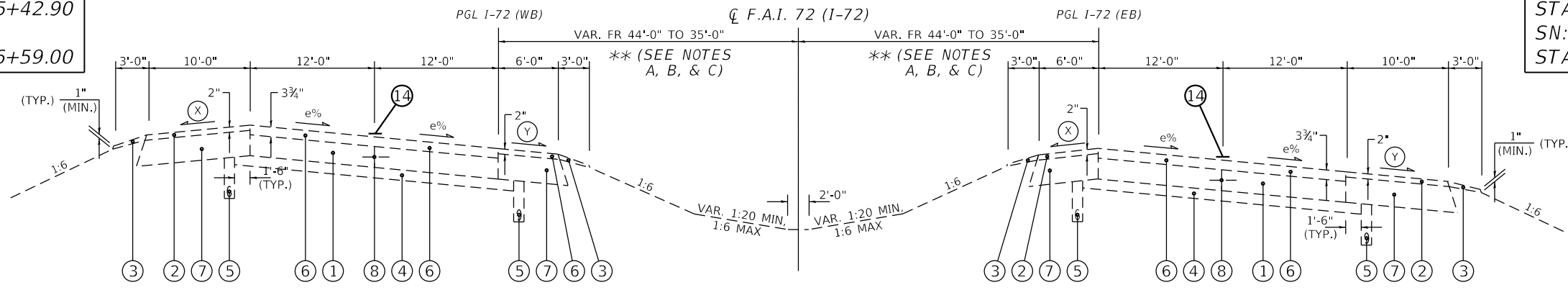


- \*\* (SEE NOTE A) (6) STA 10+20.00 TO STA 302+33.02 [29,213.02']
- \*\* (SEE NOTE A) (8) STA 331+46.62 TO STA 369+37.70 [3,791.08'] (8) STA 331+46.62 TO STA 368+36.70 [3,690.08']
- \*\* (SEE NOTE A) (9) STA 371+66.80 TO STA 376+07.22 [440.42'] (9) STA 370+66.30 TO STA 376+07.22 [540.92']
- \*\* (SEE NOTE C) (11) STA 405+78.88 TO STA 506+80.50 (BK) [10,101.62']
- \*\* (SEE NOTE C) (12) STA 345+01.88 (AH) TO STA 403+54.02 [5,852.14']
- \*\* (SEE NOTE C) (14) STA 418+65.20 TO STA 423+96.10 [530.90'] (14) STA 418+65.20 TO STA 422+79.50 [414.30']
- \*\* (SEE NOTE C) (15) STA 426+59.00 TO STA 501+92.78 [7,533.78'] (15) STA 425+42.90 TO STA 501+92.78 [7,649.88']
- \*\* (SEE NOTE C) (17) STA 517+03.96 TO STA 553+59.00 [3,655.04']

(STA EQN #2):  
 STA 506+80.50 (BK) =  
 STA 345+01.88 (AH)

(BRIDGE OMISSION #2):  
 SN: 084-0127 (EB)  
 STA 422+79.50 TO 425+42.90  
 SN: 084-0128 (WB)  
 STA 423+96.10 TO 426+59.00

(BRIDGE OMISSION #1):  
 SN: 084-0148 (WB)  
 STA 369+37.70 TO 371+66.80  
 SN: 084-0149 (EB)  
 STA 368+36.70 TO 370+66.30



- \*\* (SEE NOTE A) (7) STA 302+33.02 TO STA 331+46.62 [2,913.60']
- \*\* (SEE NOTE B) (10) STA 376+07.22 TO STA 405+78.88 [2,971.66']
- \*\* (SEE NOTE C) (13) STA 403+54.02 TO STA 418+65.20 [1,511.18']
- \*\* (SEE NOTE C) (16) STA 501+92.78 TO STA 517+03.96 [1,511.18']

- \*\* NOTES:
- (A) WIDTH = 44'
- (B) WIDTH VAR. FR. 44' TO 35'
- (C) WIDTH = 35'

- (X) WHEN THE SUPERELEVATION RATE OF THE PAVEMENT IS BETWEEN 0% AND 4%, THE SHOULDER SHALL BE SLOPED AT 4%. WHEN THE SUPERELEVATION RATE OF THE PAVEMENT EXCEEDS 4%, THE SHOULDER SHALL BE SLOPED SO THAT THE ALGEBRAIC DIFFERENCE BETWEEN PAVEMENT AND SHOULDER WILL NOT BE GREATER THAN 8%.
- (Y) SLOPE SHALL BE THE SAME AS THE SUPERELEVATION RATE, BUT NOT LESS THAN 4%.

**LEGEND**

① EXIST. CRCP PAVEMENT 8"	⑧ EXIST. LONGITUDINAL JOINT
② EXIST. HOT-MIX ASPHALT SHOULDER OVERLAY	⑨ EXIST. BITUMINOUS SHOULDERS, 8"
③ EXIST. AGG SHOULDER	⑩ EXIST. BURIED PAVEMENT
④ EXIST. SUB-BASE GRANULAR MATERIAL, 4"	⑪ EXIST. CABLE BARRIER
⑤ EXIST. PIPE UNDERDRAINS	⑫ EXIST. HOT-MIX ASPHALT SHOULDER 13"
⑥ EXIST. HOT-MIX ASPHALT OVERLAY	⑬ EXIST. BITUMINOUS SHOULDER SUPERPAVE, 4"
⑦ EXIST. BITUMINOUS SHOULDER 11 1/4"	⑭ PROP. CRACK SEAL

(AREA #2)  
 STA 10+20.00 TO 393+62.79

(AREA #3)  
 STA 393+62.79 TO 627+00.00

MODEL: Default  
 FILE: Model - Proj\pub\room.dwg  
 PROJECT: 084-0127-25-CADD\Drawings\DOT - Office\Drawings\084-0127-25-eh-hypocal.dwg

USER NAME = cabrerars	DESIGNED - CEB	REVISED -
DRAWN - CEB	REVISED -	
PLOT SCALE = 100.0000' / in.	CHECKED - RSC	REVISED -
PLOT DATE = 9/19/2019	DATE -	REVISED -

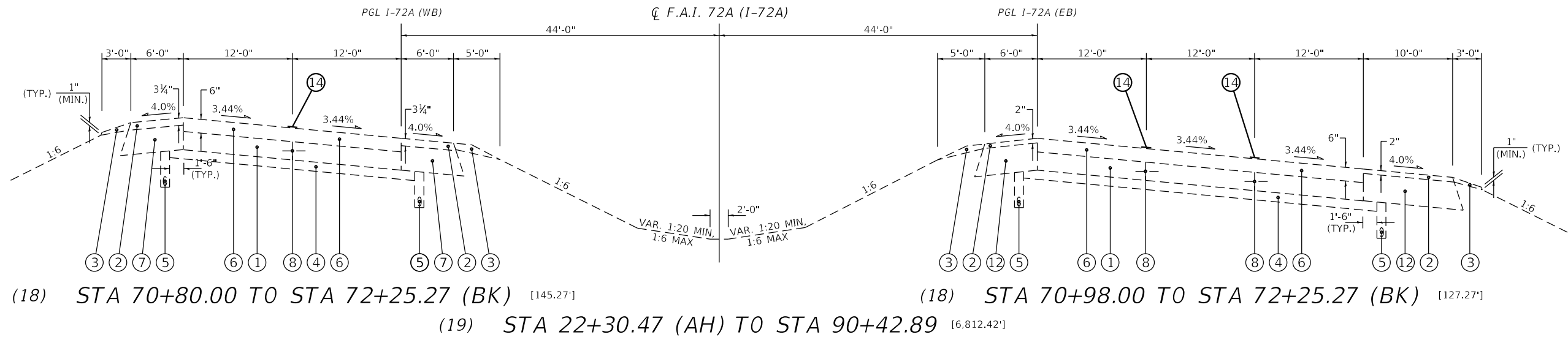
**STATE OF ILLINOIS  
 DEPARTMENT OF TRANSPORTATION**

**TYPICAL SECTIONS**

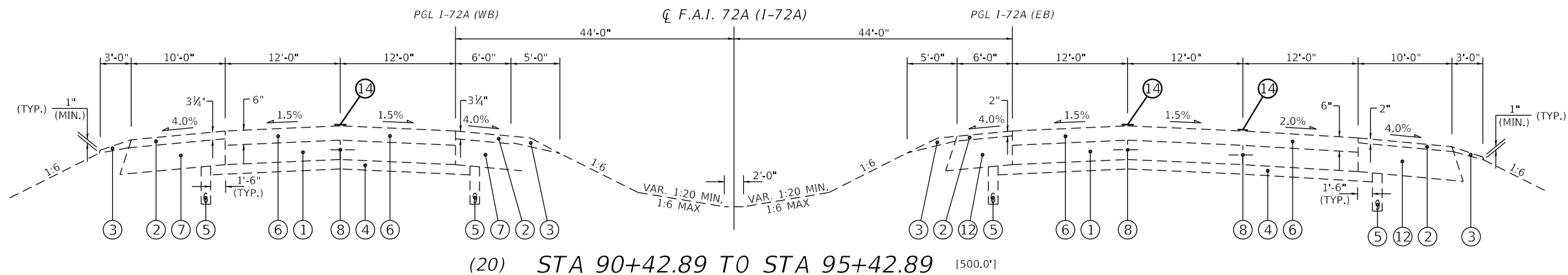
SCALE: NTS SHEET 2 OF 5 SHEETS STA. 10+20.00 TO STA. 554+00.00

F.A.I. RTE.	SECTION	COUNTY	TOTAL SHEETS	SHEET NO.
*	CJS - SANGAMON CO - 20	SANGAMON	19	7
CONTRACT NO. 72L25				
ILLINOIS FED. AID PROJECT				

\* I-55, I-72, & I-72A



(STA EQN #3):  
 $\frac{\text{STA 72+25.27 (BK)}}{\text{STA 22+30.47 (AH)}}$



LEGEND	
①	EXIST. CRCP PAVEMENT 8"
②	EXIST. HOT-MIX ASPHALT SHOULDER OVERLAY
③	EXIST. AGG SHOULDER
④	EXIST. SUB-BASE GRANULAR MATERIAL, 4"
⑤	EXIST. PIPE UNDERDRAINS
⑥	EXIST. HOT-MIX ASPHALT OVERLAY
⑦	EXIST. BITUMINOUS SHOULDER 11 1/4"
⑧	EXIST. LONGITUDINAL JOINT
⑨	EXIST. BITUMINOUS SHOULDERS, 8"
⑩	EXIST. BURIED PAVEMENT
⑪	EXIST. CABLE BARRIER
⑫	EXIST. HOT-MIX ASPHALT SHOULDER 13"
⑬	EXIST. BITUMINOUS SHOULDER SUPERPAVE, 4"
⑭	PROP. CRACK SEAL

(AREA #4)

MODEL: Default  
 FILE: \\blm01c.pw.state.il.us\pub\harcourt\dot\office\blm01c\6\Projects\0672L25\CADD\data\CAD\sheet\0672L25-ah-typical.dgn

USER NAME = cabrerars	DESIGNED - CEB	REVISED -
	DRAWN - CEB	REVISED -
PLOT SCALE = 100.0000' / in.	CHECKED - RSC	REVISED -
PLOT DATE = 9/19/2019	DATE -	REVISED -

STATE OF ILLINOIS  
 DEPARTMENT OF TRANSPORTATION

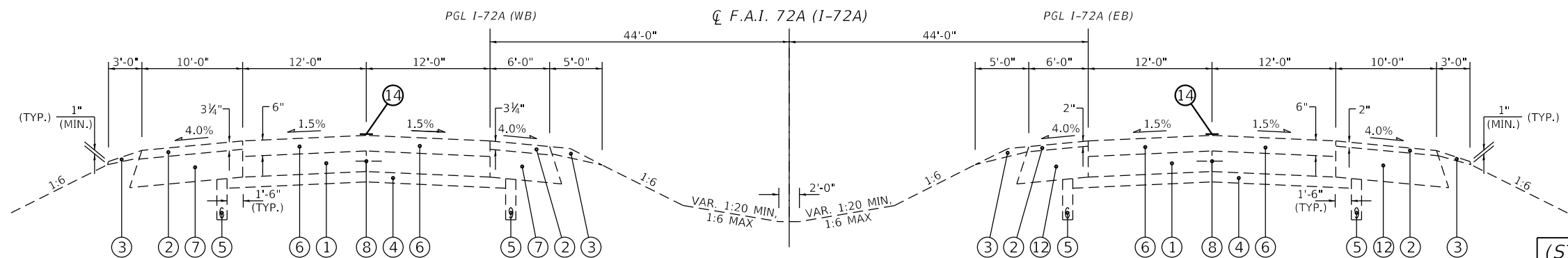
TYPICAL SECTIONS

SCALE: NTS SHEET 3 OF 5 SHEETS STA. 70+80.00 TO STA. 95+42.89

F.A.I. RTE.	SECTION	COUNTY	TOTAL SHEETS	SHEET NO.
-	CJS - SANGAMON CO - 20	SANGAMON	19	8
CONTRACT NO. 72L25				
ILLINOIS FED. AID PROJECT				

\* I-55, I-72, & I-72A

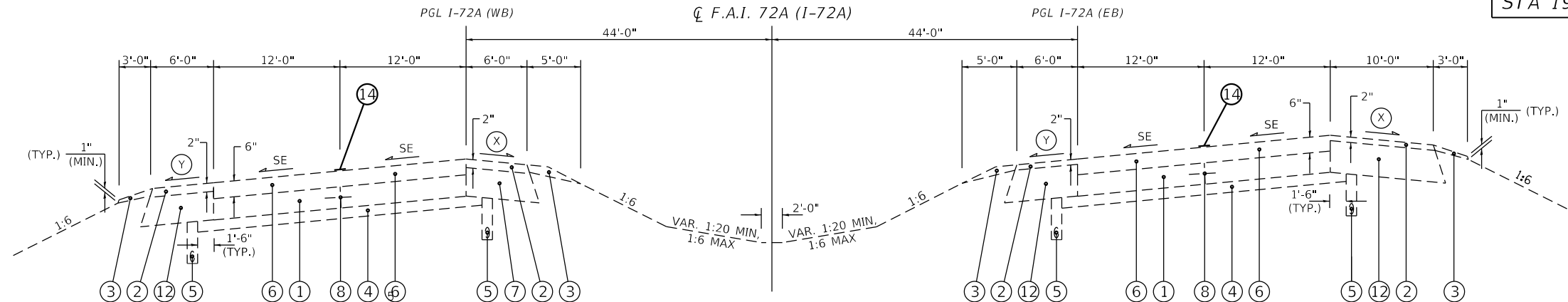




- (21) STA 95+42.89 TO STA 113+13.63 [1,770.74']
- (23) STA 150+36.29 TO STA 153+37.39 [301.10']
- (25) STA 172+96.51 TO STA 193+40.30 [2,043.79']
- (26) STA 201+85.10 TO STA 211+36.83 [951.73']
- (28) STA 232+71.72 TO STA 247+29.98 [1,458.26']
- (30) STA 266+62.37 TO STA 295+70.38 [2,908.01']
- (25) STA 172+96.51 TO STA 193+25.10 [2,028.59']
- (26) STA 201+70.50 TO STA 211+36.83 [966.33']

(STA EQN #4):  
 STA 295+70.38 (BK) =  
 STA 0+00.00 (AH)

(BRIDGE OMISSION #4):  
 SN: 084-0152 (WB)  
 STA 193+40.30 TO 201+85.10  
 SN: 084-0153 (EB)  
 STA 193+25.10 TO 201+70.50



- (22) STA 113+13.63 TO STA 150+36.29 (5.75%) [3,722.66']
- (24) STA 153+37.39 TO STA 172+96.51 (5.44%) [1,959.12']
- (27) STA 211+36.83 TO STA 232+71.72 (5.44%) [2,134.89']
- (29) STA 247+29.98 TO STA 266+62.37 (1.67%) [1,932.39']

(X) WHEN THE SUPERELEVATION RATE OF THE PAVEMENT IS BETWEEN 0% AND 4%, THE SHOULDER SHALL BE SLOPED AT 4%. WHEN THE SUPERELEVATION RATE OF THE PAVEMENT EXCEEDS 4%, THE SHOULDER SHALL BE SLOPED SO THAT THE ALGEBRAIC DIFFERENCE BETWEEN PAVEMENT AND SHOULDER WILL NOT BE GREATER THAN 8%.

(Y) SLOPE SHALL BE THE SAME AS THE SUPERELEVATION RATE, BUT NOT LESS THAN 4%.

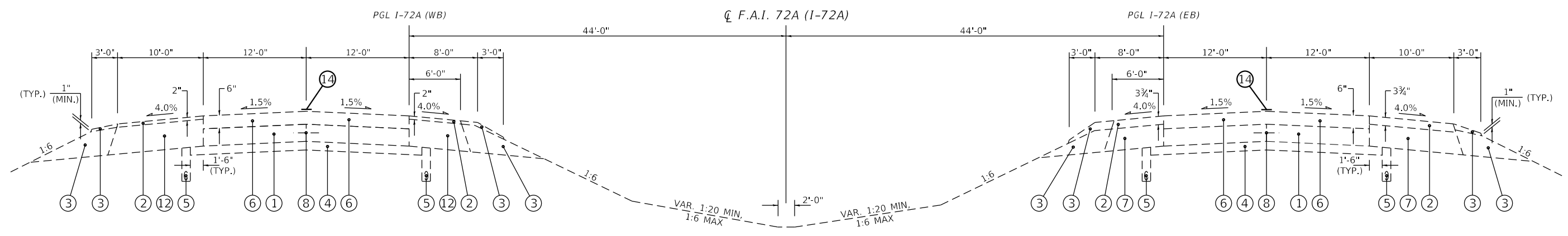
LEGEND	
① EXIST. CRCP PAVEMENT 8"	⑧ EXIST. LONGITUDINAL JOINT
② EXIST. HOT-MIX ASPHALT SHOULDER OVERLAY	⑨ EXIST. BITUMINOUS SHOULDERS, 8"
③ EXIST. AGG SHOULDER	⑩ EXIST. BURIED PAVEMENT
④ EXIST. SUB-BASE GRANULAR MATERIAL, 4"	⑪ EXIST. CABLE BARRIER
⑤ EXIST. PIPE UNDERDRAINS	⑫ EXIST. HOT-MIX ASPHALT SHOULDER 13"
⑥ EXIST. HOT-MIX ASPHALT OVERLAY	⑬ EXIST. BITUMINOUS SHOULDER SUPERPAVE, 4"
⑦ EXIST. BITUMINOUS SHOULDER 11 1/4"	⑭ PROP. CRACK SEAL

(AREA #4)

MODEL: Default  
 FILE: \\s:\p\pub\arcom\dat\illinois.gov\p\w\DOT\Documents\DOT - Offices\District 6\Projects\0672L25\CADD\Drawings\0672L25-eh-typlcal.dgn

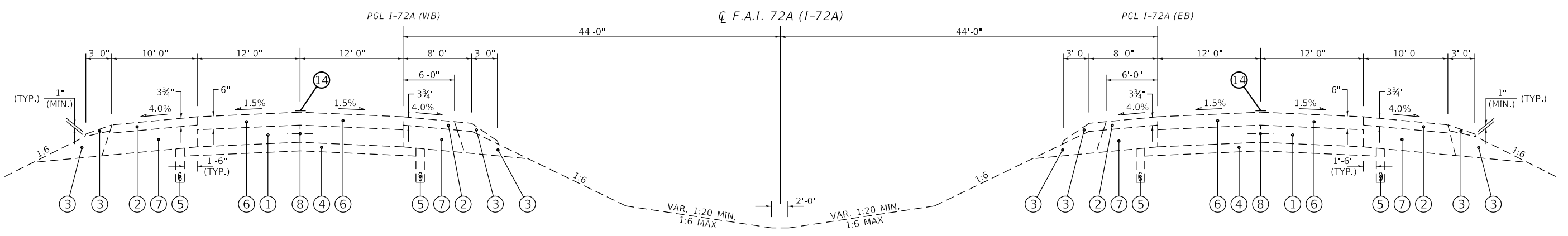
USER NAME = cabrerars	DESIGNED - CEB	REVISED -	<b>STATE OF ILLINOIS DEPARTMENT OF TRANSPORTATION</b>	<b>TYPICAL SECTIONS</b>			F.A.I. RTE.	SECTION	COUNTY	TOTAL SHEETS	SHEET NO.
DRAWN - CEB	REVISOR -	REVISED -		SCALE: NTS	SHEET 4 OF 5 SHEETS	STA. 95+42.89 TO STA. 295+70.38	CJS - SANGAMON CO - 20	SANGAMON	19	9	
PLOT SCALE = 100,0000' / in.	CHECKED - RSC	REVISED -					CONTRACT NO. 72L25				
PLOT DATE = 9/19/2019	DATE -	REVISED -					ILLINOIS FED. AID PROJECT				

\* I-55, I-72, & I-72A



(31) STA 537+80.00 TO STA 577+88.00 [4,008.0']

(31) STA 537+45.00 TO STA 577+88.00 [4,043.0']



(32) STA 577+88.00 TO STA 797+09.00 [21,921.0']

(33) STA 801+28.00 TO STA 825+76.20 [2,448.20']

(BRIDGE OMISSION #4):  
 SN: 084-0163 (EB)  
 SN: 084-0164 (WB)  
 STA 797+09.00 TO 801+28.00

LEGEND	
①	EXIST. CRCP PAVEMENT 8"
②	EXIST. HOT-MIX ASPHALT SHOULDER OVERLAY
③	EXIST. AGG SHOULDER
④	EXIST. SUB-BASE GRANULAR MATERIAL, 4"
⑤	EXIST. PIPE UNDERDRAINS
⑥	EXIST. HOT-MIX ASPHALT OVERLAY
⑦	EXIST. BITUMINOUS SHOULDER 11 1/4"
⑧	EXIST. LONGITUDINAL JOINT
⑨	EXIST. BITUMINOUS SHOULDERS, 8"
⑩	EXIST. BURIED PAVEMENT
⑪	EXIST. CABLE BARRIER
⑫	EXIST. HOT-MIX ASPHALT SHOULDER 13"
⑬	EXIST. BITUMINOUS SHOULDER SUPERPAVE, 4"
⑭	PROP. CRACK SEAL

(AREA #5)

MODEL: Default  
 FILE: \\blm01c01.pw.us.ibm.com\data\illinois.gov\PW\DOT\Documents\DOT\_Offices\Illin\dot\_6\Projects\0672L25\CADD\data\CAD\sheet\0672L25-5-h1-1-p1-cal.dgn

USER NAME = cabrerars	DESIGNED - CEB	REVISED -
DRAWN - CEB	REVISIONS -	
PLOT SCALE = 100,0000' / in.	CHECKED - RSC	REVISED -
PLOT DATE = 9/19/2019	DATE -	REVISED -

STATE OF ILLINOIS  
 DEPARTMENT OF TRANSPORTATION

TYPICAL SECTIONS

SCALE: NTS SHEET 5 OF 5 SHEETS STA. 537+45.00 TO STA. 825+76.20

F.A.I. RTE.	SECTION	COUNTY	TOTAL SHEETS	SHEET NO.
-	CJS - SANGAMON CO - 20	SANGAMON	19	10
CONTRACT NO. 72L25				
ILLINOIS FED. AID PROJECT				

\* I-55, I-72, & I-72A

MODEL: Default  
 FILE: \\s:\cjs\p1\harcourt\dot\office\11\dot\Documents\DOT\_Offices\11\dot\CADD\data\CAD\sheet\0672125-sh1plan.dwg



EXIST. CURVE 110  
 PI STA. = 260+25.13  
 ! = 7° 15' 55" (LT)  
 D = 1° 00' 03"  
 R = 5,725.32'  
 T = 363.49'  
 L = 726.00'  
 E = 11.53'  
 e = \_\_\_\_\_  
 T.R. = \_\_\_\_\_  
 S.E. RUN = \_\_\_\_\_  
 P.C. STA. = 256+61.65  
 P.T. STA. = 263+87.65

(STA EQN #1):  
 Sta 0+00.00 (BK) =  
 Sta 167+19.74 (AH)

(STA EQN #1):  
 POT Sta 0+00.00 (BK) =  
 POT Sta 167+19.74 (AH)

SN 084-0099  
 Sta 1+86.47 (I-55)  
 Sta 100+00.00 (FAU 8065)

LIMITS OF IMPROVEMENT  
 BEGINS @ Sta 13+40.43 (NB & SB)

SN: 084-0117  
 Sta 218+27.98 (I-55) =  
 Sta 100+00.00 (FAU 8002)

SN: 084-7128  
 2-5'x3' BOX CULV  
 Sta 231+17.70

LIMITS OF IMPROVEMENT  
 ENDS @ Sta 253+11.12 (SB)  
 Sta 252+22.87 (NB)

EXIST. CURVE 111  
 PI STA. = 293+65.54  
 ! = 24° 42' 45" (RT)  
 D = 2° 00' 01"  
 R = 2,864.46'  
 T = 627.50'  
 L = 1,235.48'  
 E = 67.93'  
 e = \_\_\_\_\_  
 T.R. = \_\_\_\_\_  
 S.E. RUN = \_\_\_\_\_  
 P.C. STA. = 287+38.04  
 P.T. STA. = 299+73.52

(AREA 1)

USER NAME = cabrerars	DESIGNED - RSC	REVISED -
	DRAWN - RSC	REVISED -
PLOT SCALE = 1000.0000' / in.	CHECKED -	REVISED -
PLOT DATE = 9/27/2019	DATE -	REVISED -

STATE OF ILLINOIS  
 DEPARTMENT OF TRANSPORTATION

PLAN SHEETS

SCALE: 500 SHEET 1 OF 8 SHEETS STA. 20+00.00 TO STA. 299+73.52

F.A.I. RTE.	SECTION	COUNTY	TOTAL SHEETS	SHEET NO.
*	CJS - SANGAMON CO - 20	SANGAMON	19	11
CONTRACT NO. 72L25				
ILLINOIS FED. AID PROJECT				

\* I-55, I-72, & I-72A



(AREA 2)



(AREA 2)

MODEL: Default  
 FILE: \\bls01c:\pub\baronm\data\links\spc\p\w\DOT\Documents\DOT\_Offices\bls01c\Projects\0672125\0672125-rlb\plan.dgn

USER NAME = cabrerars	DESIGNED - RSC	REVISED -
DRAWN - RSC	REVISED -	
PLOT SCALE = 1000.0000' / in.	CHECKED -	REVISED -
PLOT DATE = 9/27/2019	DATE -	REVISED -

**STATE OF ILLINOIS  
DEPARTMENT OF TRANSPORTATION**

**PLAN SHEETS**

SCALE: 500    SHEET 2 OF 8 SHEETS    STA. 208+30.00 TO STA. 180+00.00

F.A.I. RTE.	SECTION	COUNTY	TOTAL SHEETS	SHEET NO.
*	CJS - SANGAMON CO - 20	SANGAMON	19	12
CONTRACT NO. 72L25				
ILLINOIS FED. AID PROJECT				

\* I-55, I-72, & I-72A



EXIST. CURVE 117  
 PI STA. = 317+22.09  
 ! = 29° 08' 01" (LT)  
 D = 1° 00' 00"  
 R = 5,730.11'  
 T = 1,489.03'  
 L = 2,913.62'  
 E = 190.31'  
 e = \_\_\_\_\_  
 T.R. = \_\_\_\_\_  
 S.E. RUN = \_\_\_\_\_  
 P.C. STA. = 302+33.06  
 P.T. STA. = 331+46.68

EXIST. CURVE 112  
 PI STA. = 180+45.38  
 ! = 0° 23' 53" (LT)  
 D = 0° 01' 59"  
 R = 173,660.74'  
 T = 603.34'  
 L = 1,206.68'  
 E = 1.05'  
 e = \_\_\_\_\_  
 T.R. = \_\_\_\_\_  
 S.E. RUN = \_\_\_\_\_  
 P.C. STA. = 174+42.04  
 P.T. STA. = 186+48.72

SN: 084-0144  
 POT Sta 260+28.24 (I-72)  
 POT Sta 50+00.00 (TR 94)

(AREA 2)



EXIST. CURVE 118  
 PI STA. = 391+27.34  
 ! = 29° 43' 22" (RT)  
 D = 1° 00' 01"  
 R = 5,728.35'  
 T = 1,520.06'  
 L = 2,971.63'  
 E = 198.25'  
 e = \_\_\_\_\_  
 T.R. = \_\_\_\_\_  
 S.E. RUN = \_\_\_\_\_  
 P.C. STA. = 376+07.28  
 P.T. STA. = 405+78.92

SN: 084-0146  
 POT Sta 472+60.63 (I-72)  
 POT Sta 50+00.00 (FAU 8094)

(AREAS 2 & 3)

MODEL: Default  
 FILE: \\nas01.cas.state.il.us\pub\baronm\data\illinois\spc\PI\DOT\Documents\DOT\_Offices\Illindot\Projects\0672125\CADD\data\CAD\Sheets\0672125-2-Plan.dwg

USER NAME = cabrerars	DESIGNED - RSC	REVISED -
	DRAWN - RSC	REVISED -
PLOT SCALE = 1000.0000' / in.	CHECKED -	REVISED -
PLOT DATE = 9/26/2019	DATE -	REVISED -

**STATE OF ILLINOIS  
DEPARTMENT OF TRANSPORTATION**

**PLAN SHEETS**

SCALE: 500      SHEET 3 OF 8 SHEETS      STA. 180+00.00 TO STA. 485+00.00

F.A.I. RTE.	SECTION	COUNTY	TOTAL SHEETS	SHEET NO.
*	CJS - SANGAMON CO - 20	SANGAMON	19	13
			CONTRACT NO. 72L25	
ILLINOIS FED. AID PROJECT				

\* I-55, I-72, & I-72A



EXIST. CURVE 3116  
 PI STA. = 411+20.52  
 ! = 22° 39' 36" (RT)  
 D = 1° 29' 58"  
 R = 3,821.31'  
 T = 765.65'  
 L = 1,511.29'  
 E = 75.95'  
 e = \_\_\_\_\_  
 T.R. = \_\_\_\_\_  
 S.E. RUN = \_\_\_\_\_  
 P.C. STA. = 403+54.87  
 P.T. STA. = 418+66.16

(AREA 3)

MODEL: Default  
 FILE: \\nas01c.pw.state.il.us\pub\aroom\data\illinois\pwr\DOT\Documents\DOT\_Offices\District\_6\Projects\0672L25\CADD\data\CAD\sheet\0672L25-sh1b1n.dgn

USER NAME = cabrerars	DESIGNED - RSC	REVISED -
	DRAWN - RSC	REVISED -
PLOT SCALE = 1000.0000' / in.	CHECKED -	REVISED -
PLOT DATE = 9/27/2019	DATE -	REVISED -

**STATE OF ILLINOIS  
 DEPARTMENT OF TRANSPORTATION**

PLAN SHEETS		
SCALE: 500	SHEET 4 OF 8 SHEETS	STA. 485+00.00 TO STA. 475+00.00

F.A.I. RTE.	SECTION	COUNTY	TOTAL SHEETS	SHEET NO.
*	CJS - SANGAMON CO - 20	SANGAMON	19	14
CONTRACT NO. 72L25				
ILLINOIS FED. AID PROJECT				

\* I-55, I-72, & I-72A



EXIST. CURVE C51  
 PI STA. = 584+19.23  
 ! = 15° 36' 11" (RT)  
 D = 1° 30' 33"  
 R = 3,796.57'  
 T = 520.16'  
 L = 1,033.89'  
 E = 35.47'  
 e = \_\_\_\_\_  
 T.R. = \_\_\_\_\_  
 S.E. RUN = \_\_\_\_\_  
 P.C. STA. = 578+99.07  
 P.T. STA. = 589+32.96

SN: 084-0136 (SB)  
 SN: 084-0137 (NB)  
 Sta 502+59.50 (I-72)  
 Sta 395+92.00 (IL 4)

LIMITS OF IMPROVEMENT  
 ENDS @ Sta 553+59.00 (EB & WB)

(STA EQN):  
 POT Sta 571+05.03 (BK) = (569+89.10)  
 POT Sta 569+30.74 (AH) = (569+89.10)

MATCH LINE 475+00.00  
 POT Sta 426+33.39

EXIST. CURVE C50  
 PI STA. = 509+57.94  
 ! = 22° 37' 49" (LT)  
 D = 1° 29' 51"  
 R = 3,825.84'  
 T = 765.53'  
 L = 1,511.11'  
 E = 75.84'  
 e = \_\_\_\_\_  
 T.R. = \_\_\_\_\_  
 S.E. RUN = \_\_\_\_\_  
 P.C. STA. = 501+92.41  
 P.T. STA. = 517+03.52

SN: 084-0185  
 Sta 555+18.46

SN: 084-0513  
 Sta 596+33.18 (I-72)  
 Sta 792+77.64 (FAU 8071)

SN: 084-0074 (EB)  
 SN: 084-0075 (WB)  
 Sta 608+90.53

EXIST. CURVE C53  
 PI STA. = 629+39.38  
 ! = 19° 19' 27" (RT)  
 D = 1° 29' 44"  
 R = 3,831.41'  
 T = 652.31'  
 L = 1,292.22'  
 E = 55.13'  
 e = \_\_\_\_\_  
 T.R. = \_\_\_\_\_  
 S.E. RUN = \_\_\_\_\_  
 P.C. STA. = 622+87.07  
 P.T. STA. = 635+79.29

EXIST. CURVE C52  
 PI STA. = 607+25.73  
 ! = 36° 03' 13" (LT)  
 D = 1° 36' 09"  
 R = 3,575.66'  
 T = 1,163.65'  
 L = 2,250.00'  
 E = 184.58'  
 e = \_\_\_\_\_  
 T.R. = \_\_\_\_\_  
 S.E. RUN = \_\_\_\_\_  
 P.C. STA. = 595+62.08  
 P.T. STA. = 618+12.08

(AREA 3)

MODEL: Default  
 FILE: \\s:\p\pub\p\com\da\illinois\p\pub\p\dot\Documents\DOT\_Offices\Illrte\6\Projects\0672L25\CADD\data\CAD\sheet\0672L25-3-Plan.dwg

USER NAME = cabrerars	DESIGNED - RSC	REVISED -
	DRAWN - RSC	REVISED -
PLOT SCALE = 1000.0000' / in.	CHECKED -	REVISED -
PLOT DATE = 9/27/2019	DATE -	REVISED -

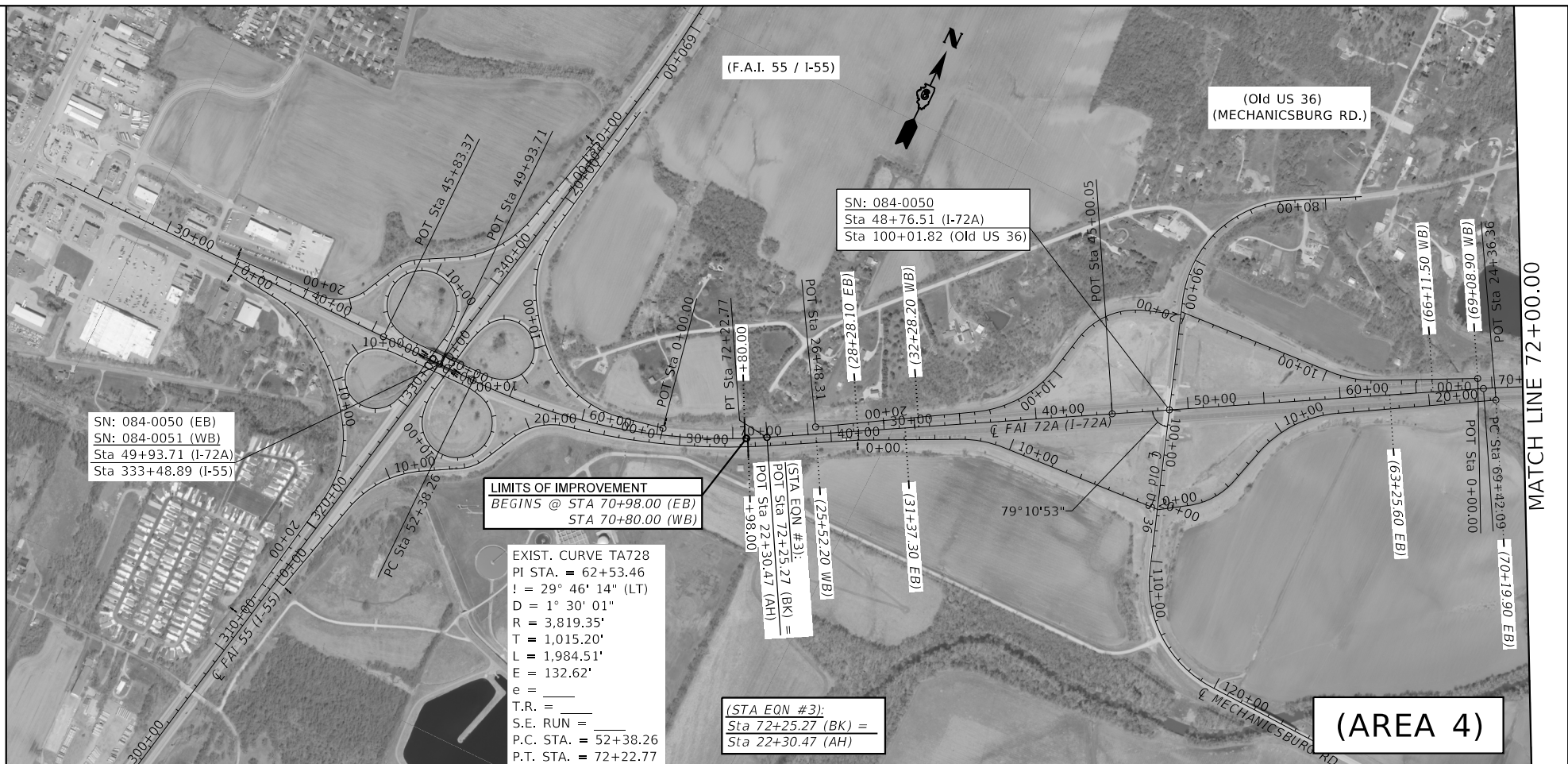
STATE OF ILLINOIS  
 DEPARTMENT OF TRANSPORTATION

PLAN SHEETS

SCALE: 500 SHEET 5 OF 8 SHEETS STA. 475+00.00 TO STA. 630+00.00

F.A.I. RTE.	SECTION	COUNTY	TOTAL SHEETS	SHEET NO.
*	CJS - SANGAMON CO - 20	SANGAMON	19	15
CONTRACT NO. 72L25				
ILLINOIS FED. AID PROJECT				

\* I-55, I-72, & I-72A



SN: 084-0050 (EB)  
SN: 084-0051 (WB)  
Sta 49+93.71 (I-72A)  
Sta 333+48.89 (I-55)

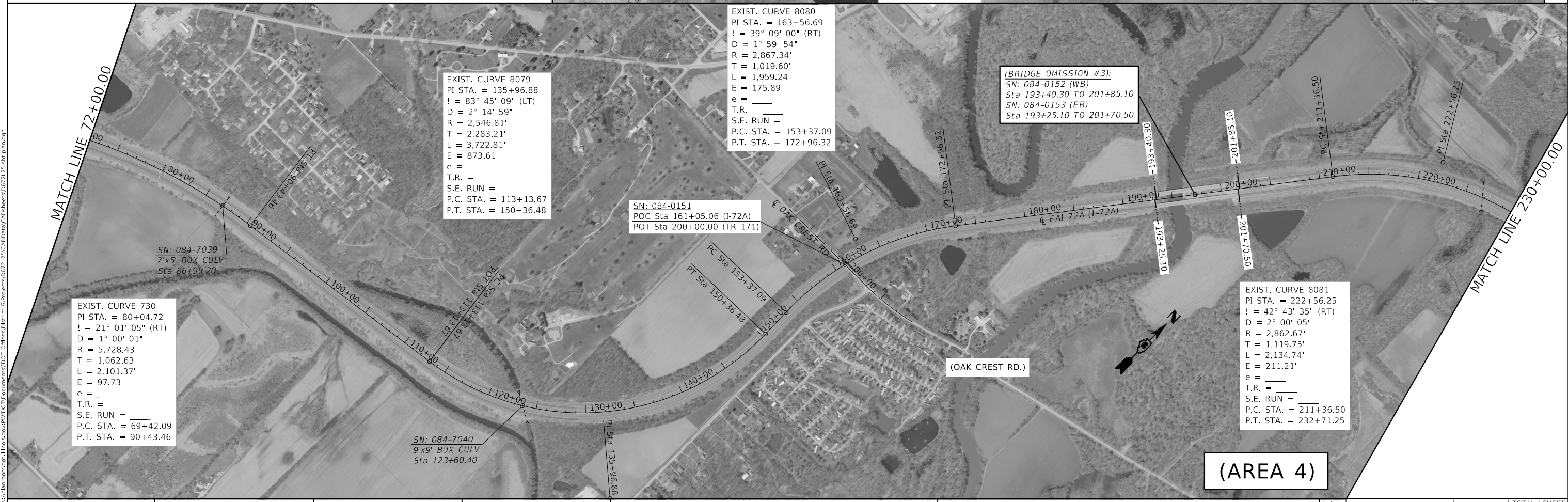
**LIMITS OF IMPROVEMENT**  
BEGINS @ STA 70+98.00 (EB)  
STA 70+80.00 (WB)

EXIST. CURVE TA728  
PI STA. = 62+53.46  
! = 29° 46' 14" (LT)  
D = 1° 30' 01"  
R = 3,819.35'  
T = 1,015.20'  
L = 1,984.51'  
E = 132.62'  
e = \_\_\_\_\_  
T.R. = \_\_\_\_\_  
S.E. RUN = \_\_\_\_\_  
P.C. STA. = 52+38.26  
P.T. STA. = 72+22.77

(STA EQN #3):  
Sta 72+25.27 (BK) =  
Sta 22+30.47 (AH)

(AREA 4)

MATCH LINE 72+00.00



EXIST. CURVE 8079  
PI STA. = 135+96.88  
! = 83° 45' 09" (LT)  
D = 2° 14' 59"  
R = 2,546.81'  
T = 2,283.21'  
L = 3,722.81'  
E = 873.61'  
e = \_\_\_\_\_  
T.R. = \_\_\_\_\_  
S.E. RUN = \_\_\_\_\_  
P.C. STA. = 113+13.67  
P.T. STA. = 150+36.48

EXIST. CURVE 8080  
PI STA. = 163+56.69  
! = 39° 09' 00" (RT)  
D = 1° 59' 54"  
R = 2,867.34'  
T = 1,019.60'  
L = 1,959.24'  
E = 175.89'  
e = \_\_\_\_\_  
T.R. = \_\_\_\_\_  
S.E. RUN = \_\_\_\_\_  
P.C. STA. = 153+37.09  
P.T. STA. = 172+96.32

(BRIDGE OMISSION #3):  
SN: 084-0152 (WB)  
Sta 193+40.30 TO 201+85.10  
SN: 084-0153 (EB)  
Sta 193+25.10 TO 201+70.50

EXIST. CURVE 8081  
PI STA. = 222+56.25  
! = 42° 43' 35" (RT)  
D = 2° 00' 05"  
R = 2,862.67'  
T = 1,119.75'  
L = 2,134.74'  
E = 211.21'  
e = \_\_\_\_\_  
T.R. = \_\_\_\_\_  
S.E. RUN = \_\_\_\_\_  
P.C. STA. = 211+36.50  
P.T. STA. = 232+71.25

EXIST. CURVE 730  
PI STA. = 80+04.72  
! = 21° 01' 05" (RT)  
D = 1° 00' 01"  
R = 5,728.43'  
T = 1,062.63'  
L = 2,101.37'  
E = 97.73'  
e = \_\_\_\_\_  
T.R. = \_\_\_\_\_  
S.E. RUN = \_\_\_\_\_  
P.C. STA. = 69+42.09  
P.T. STA. = 90+43.46

SN: 084-7039  
7'x5' BOX CULV  
Sta 86+99.20

SN: 084-7040  
9'x9' BOX CULV  
Sta 123+60.40

SN: 084-0151  
POC Sta 161+05.06 (I-72A)  
POT Sta 200+00.00 (TR 171)

(AREA 4)

MATCH LINE 72+00.00

MATCH LINE 230+00.00

MODEL: Default  
FILE: \\bls01\pub\blsroom\dtd\illinois\pww\DOT\Documents\DOT\_Offices\Illin\DOT\Projects\72L25\CADD\data\CAD\sheet\084-72L25-rhebln.dgn

USER NAME = cabrerars	DESIGNED - RSC	REVISED -
DRAWN - RSC	REVISED -	
PLOT SCALE = 1000.0000' / in.	CHECKED -	REVISED -
PLOT DATE = 9/27/2019	DATE -	REVISED -

**STATE OF ILLINOIS  
DEPARTMENT OF TRANSPORTATION**

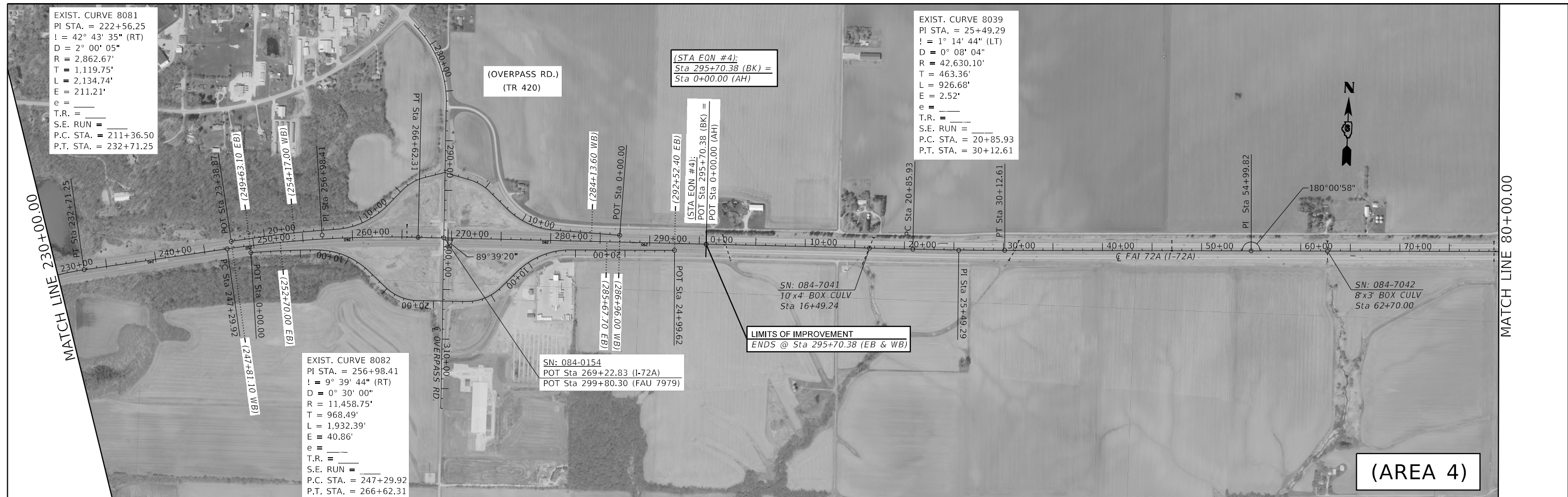
**PLAN SHEETS**

SCALE: 500 SHEET 6 OF 8 SHEETS STA. 20+00.00 TO STA. 230+00.00

F.A.I. RTE.	SECTION	COUNTY	TOTAL SHEETS	SHEET NO.
*	CJS - SANGAMON CO - 20	SANGAMON	19	16
CONTRACT NO. 72L25				
ILLINOIS FED. AID PROJECT				

\* I-55, I-72, & I-72A





EXIST. CURVE 8081  
 PI STA. = 222+56.25  
 I = 42° 43' 35" (RT)  
 D = 2° 00' 05"  
 R = 2,862.67'  
 T = 1,119.75'  
 L = 2,134.74'  
 E = 211.21'  
 e = \_\_\_\_\_  
 T.R. = \_\_\_\_\_  
 S.E. RUN = \_\_\_\_\_  
 P.C. STA. = 211+36.50  
 P.T. STA. = 232+71.25

EXIST. CURVE 8039  
 PI STA. = 25+49.29  
 I = 1° 14' 44" (LT)  
 D = 0° 08' 04"  
 R = 42,630.10'  
 T = 463.36'  
 L = 926.68'  
 E = 2.52'  
 e = \_\_\_\_\_  
 T.R. = \_\_\_\_\_  
 S.E. RUN = \_\_\_\_\_  
 P.C. STA. = 20+85.93  
 P.T. STA. = 30+12.61

EXIST. CURVE 8082  
 PI STA. = 256+98.41  
 I = 9° 39' 44" (RT)  
 D = 0° 30' 00"  
 R = 11,458.75'  
 T = 968.49'  
 L = 1,932.39'  
 E = 40.86'  
 e = \_\_\_\_\_  
 T.R. = \_\_\_\_\_  
 S.E. RUN = \_\_\_\_\_  
 P.C. STA. = 247+29.92  
 P.T. STA. = 266+62.31

EXIST. CURVE 8043  
 PI STA. = 578+53.23  
 I = 4° 14' 43" (RT)  
 D = 0° 14' 56"  
 R = 23,019.90'  
 T = 853.19'  
 L = 1,705.60'  
 E = 15.81'  
 e = \_\_\_\_\_  
 T.R. = \_\_\_\_\_  
 S.E. RUN = \_\_\_\_\_  
 P.C. STA. = 570+00.04  
 P.T. STA. = 587+05.64

EXIST. CURVE 8042  
 PI STA. = 441+59.21  
 I = 9° 39' 50" (LT)  
 D = 0° 22' 29"  
 R = 15,288.06'  
 T = 1,292.36'  
 L = 2,578.59'  
 E = 54.53'  
 e = \_\_\_\_\_  
 T.R. = \_\_\_\_\_  
 S.E. RUN = \_\_\_\_\_  
 P.C. STA. = 428+66.85  
 P.T. STA. = 454+45.44

MODEL: Default  
 FILE: I:\Projects\72L25\72L25.dwg  
 PROJECT: 72L25  
 SHEET: 7 OF 8  
 DATE: 9/27/2019

USER NAME	= cabrerars	DESIGNED	- RSC	REVISED	-
DRAWN	- RSC	CHECKED	-	REVIS	-
PLOT SCALE	= 1000.0000' / in.	DATE	-	REVIS	-
PLOT DATE	= 9/27/2019				

**STATE OF ILLINOIS  
 DEPARTMENT OF TRANSPORTATION**

**PLAN SHEETS**

SCALE: 500 SHEET 7 OF 8 SHEETS STA. 230+00.00 TO STA. 585+00.00

F.A.I. RTE.	SECTION	COUNTY	TOTAL SHEETS	SHEET NO.
*	CJS - SANGAMON CO - 20	SANGAMON	19	17
CONTRACT NO. 72L25				
ILLINOIS FED. AID PROJECT				

\* I-55, I-72, & I-72A

MODEL: Default  
 FILE: A:\a111\proj\p101\p101\DOT\Documents\DOT\_Offices\11111111\DOT\_0672125\CADData\CAD\Sheets\0672125-shfplan.dgn

EXIST. CURVE 8044  
 PI STA. = 614+52.57  
 I = 4° 51' 09" (LT)  
 D = 0° 14' 59"  
 R = 22,942.31'  
 T = 972.10'  
 L = 1,943.04'  
 E = 20.59'  
 e =  
 T.R. =  
 S.E. RUN =  
 P.C. STA. = 604+80.47  
 P.T. STA. = 624+23.51

EXIST. CURVE 8043  
 PI STA. = 578+53.23  
 I = 4° 14' 43" (RT)  
 D = 0° 14' 56"  
 R = 23,019.90'  
 T = 853.19'  
 L = 1,705.60'  
 E = 15.81'  
 e =  
 T.R. =  
 S.E. RUN =  
 P.C. STA. = 570+00.04  
 P.T. STA. = 587+05.64

SN: 084-0161  
 POT Sta 667+28.46 (I-72A)  
 POT Sta 4850+00.00 (FAS 636)

SN: 084-0162  
 POT Sta 721+28.56 (I-72A)  
 POT Sta 3349+97.91 (FAS 630)

(AREA 5)



LIMITS OF IMPROVEMENT  
 ENDS @ Sta 825+60.58 (EB & WB)

(BRIDGE OMISSION #4):  
 SN: 084-0163 (EB)  
 SN: 084-0164 (WB)  
 Sta 797+09.00 TO 801+28.00

(AREA 5)

USER NAME = cabrerars	DESIGNED - RSC	REVISED -
DRAWN - RSC	REVISED -	REVISED -
PLOT SCALE = 1000.0000' / in.	CHECKED -	REVISED -
PLOT DATE = 9/27/2019	DATE -	REVISED -

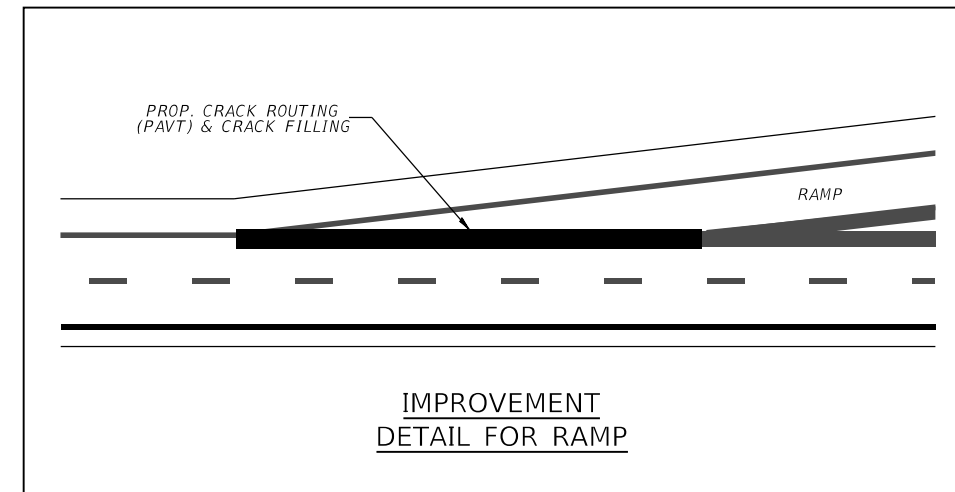
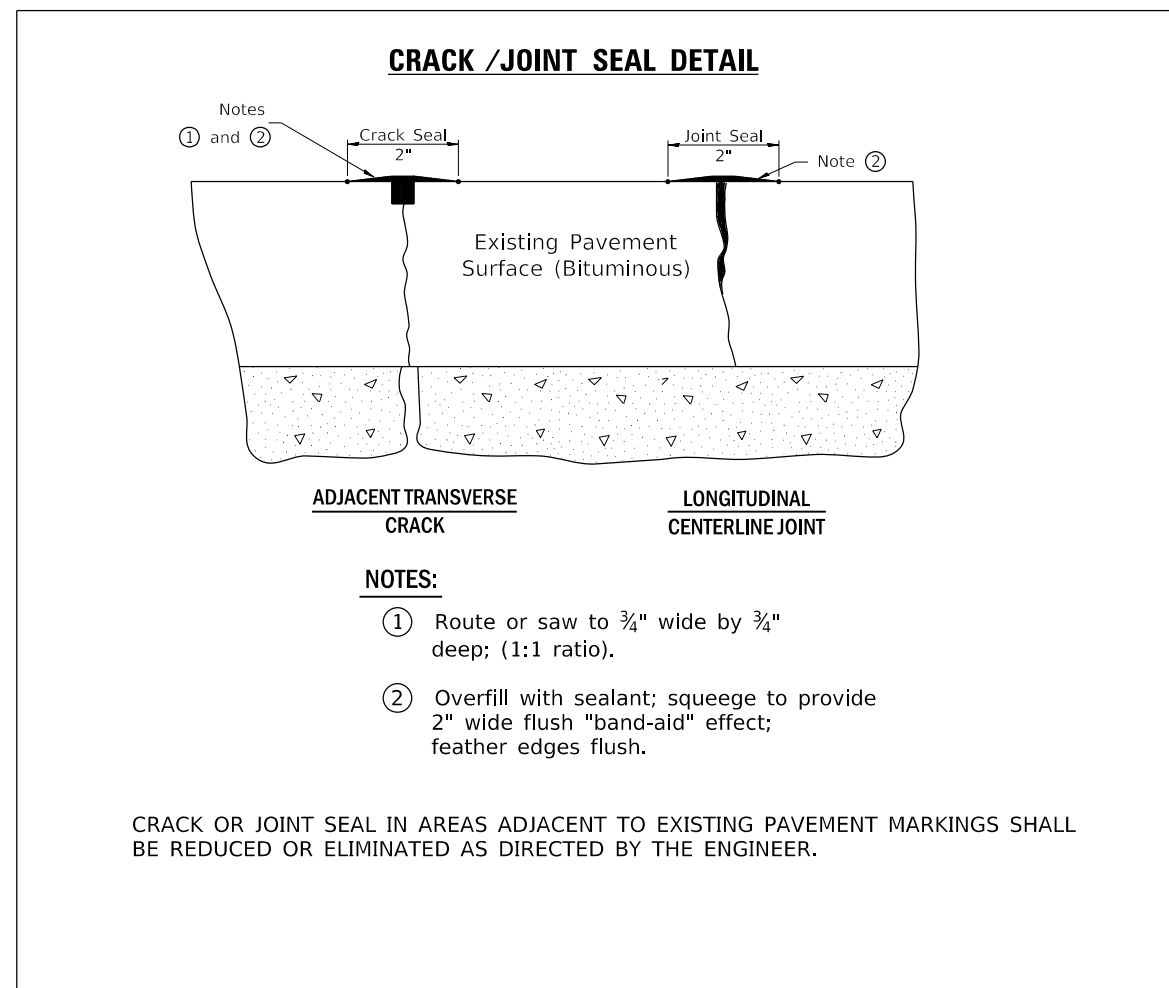
STATE OF ILLINOIS  
 DEPARTMENT OF TRANSPORTATION

PLAN SHEETS

SCALE: 500    SHEET 8 OF 8 SHEETS    STA. 585+00.00 TO STA. 82+60.58

F.A.I. RTE.	SECTION	COUNTY	TOTAL SHEETS	SHEET NO.
*	CJS - SANGAMON CO - 20	SANGAMON	19	18
CONTRACT NO. 72L25				
ILLINOIS FED. AID PROJECT				

\* I-55, I-72, & I-72A



**[F.A.I. 55 (I-55)] (AREA #1)**  
**(STA EQN #1):**  
**0+00.00 (BK) = 167+19.74 (AH)**  
**Toronto Rd. Interchange**  
 198+14.50 TO 204+80.40 NB Entr. Ramp  
 200+13.70 TO 202+81.30 SB Exit Ramp  
 233+14.30 TO 239+45.80 SB Entr. Ramp  
 233+57.30 TO 236+42.60 NB Exit Ramp

**[F.A.I. 72 (I-72)] (AREA #2)**  
**Waverly Rd. Interchange**  
 12+71.40 TO 20+25.60 WB Entr. Ramp  
 16+78.20 TO 19+61.00 EB Exit Ramp  
 52+42.80 TO 55+42.10 WB Exit Ramp  
 52+05.80 TO 59+48.90 EB Entr. Ramp

**[F.A.I. 72 (I-72)] (AREA #3)**  
**(STA EQN #2):**  
**506+80.50 (BK) = 345+01.88 (AH)**  
**Wabash Ave. Interchange (W)**  
 348+77.70 TO 351+56.60 EB Exit Ramp  
 349+84.50 TO 357+43.90 WB Entr. Ramp  
**[BRIDGE OMISSION #1]**  
**SN 084-0148 (WB)**  
**369+37.70 TO 371+66.80**  
**SN 084-0149 (EB)**  
**368+36.70 TO 370+66.30**  
**Wabash Ave. Interchange (E)**  
 382+31.10 TO 389+98.40 EB Entr. Ramp  
 391+80.80 TO 394+63.40 WB Exit Ramp  
**[BRIDGE OMISSION #2]**  
**SN 084-0127 (EB)**  
**422+79.50 TO 425+42.90**  
**SN 084-0128 (WB)**  
**423+96.10 TO 426+59.00**  
**Veterans Pkwy. Interchange**  
 475+14.70 TO 482+95.60 WB Entr. Ramp  
 483+12.30 TO 486+07.30 EB Exit Ramp  
 504+13.40 TO 512+08.80 EB Exit Ramp  
 518+71.70 TO 526+32.50 EB Entr. Ramp  
 521+82.20 TO 524+75.70 WB Exit Ramp

**[F.A.I. 72A (I-72A)] (AREA #4)**  
**(STA EQN #3):**  
**72+25.27 (BK) = 22+30.47 (AH)**  
**Old US 36 Interchange**  
 25+52.20 TO 32+28.20 WB Entr. Ramp  
 28+28.10 TO 31+37.30 EB Exit Ramp  
 63+25.60 TO 70+19.90 EB Entr. Ramp  
 66+11.50 TO 69+08.90 WB Exit Ramp

**[BRIDGE OMISSION #3]**  
**SN 084-0152 (WB)**  
**193+40.30 TO 201+85.10**  
**SN 084-0153 (EB)**  
**193+25.10 TO 201+70.50**  
**Overpass Rd. Interchange**  
 247+81.10 TO 254+17.00 WB Entr. Ramp  
 249+63.10 TO 252+70.00 EB Exit Ramp  
 284+13.60 TO 286+96.00 WB Exit Ramp  
 285+67.70 TO 292+52.40 EB Entr. Ramp  
**(STA EQN #4):**  
**295+70.38 (BK) = 0+00.00 (AH)**

**[F.A.I. 72A (I-72A)] (AREA #5)**  
**Dye Rd. Interchange**  
 699+58.50 TO 706+00.00 WB Entr. Ramp  
 702+03.20 TO 704+79.20 EB Exit Ramp  
 736+30.50 TO 739+04.40 WB Exit Ramp  
 738+47.80 TO 744+60.90 EB Entr. Ramp  
**[BRIDGE OMISSION #4]**  
**SN 084-0163 (EB)**  
**SN 084-0164 (WB)**  
**797+09.00 TO 801+28.00**

MODEL: Default  
 FILE: Model: p:\pub\harron.dwg  
 PROJECT: 0672125\CADD\Drawings\DOT - Offices\Drawings\0672125-rt-detailed.dwg

USER NAME = cabrerars	DESIGNED - RSC	REVISED -
	DRAWN - RSC	REVISED -
PLOT SCALE = 100.0000' / in.	CHECKED -	REVISED -
PLOT DATE = 10/2/2019	DATE -	REVISED -

**STATE OF ILLINOIS  
DEPARTMENT OF TRANSPORTATION**

**CRACK /JOINT SEAL DETAIL**

SCALE: NTS SHEET 1 OF 1 SHEETS STA. TO STA.

F.A.I. RTE.	SECTION	COUNTY	TOTAL SHEETS	SHEET NO.
*	CJS - SANGAMON CO - 20	SANGAMON	19	19
			CONTRACT NO. 72L25	
			ILLINOIS FED. AID PROJECT	

\* I-55, I-72, & I-72A