

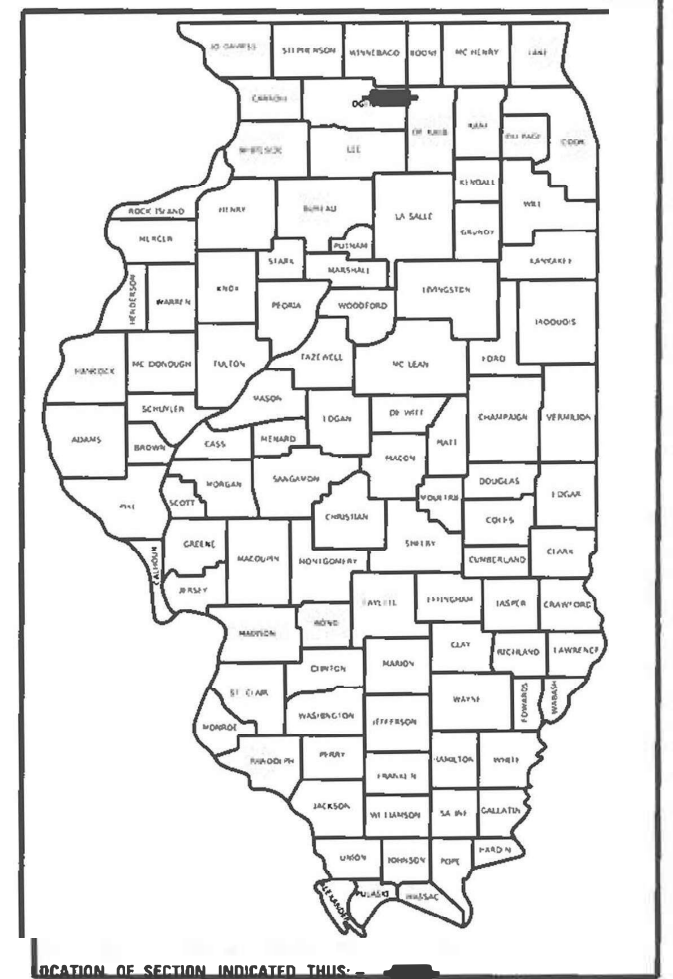
STATE OF ILLINOIS
DEPARTMENT OF TRANSPORTATION

FAI ROUTE	SECTION	COUNTY	TOTAL SHEETS	SHEET NO.
39	141-2	OGLE	64	04

PROPOSED HIGHWAY PLANS

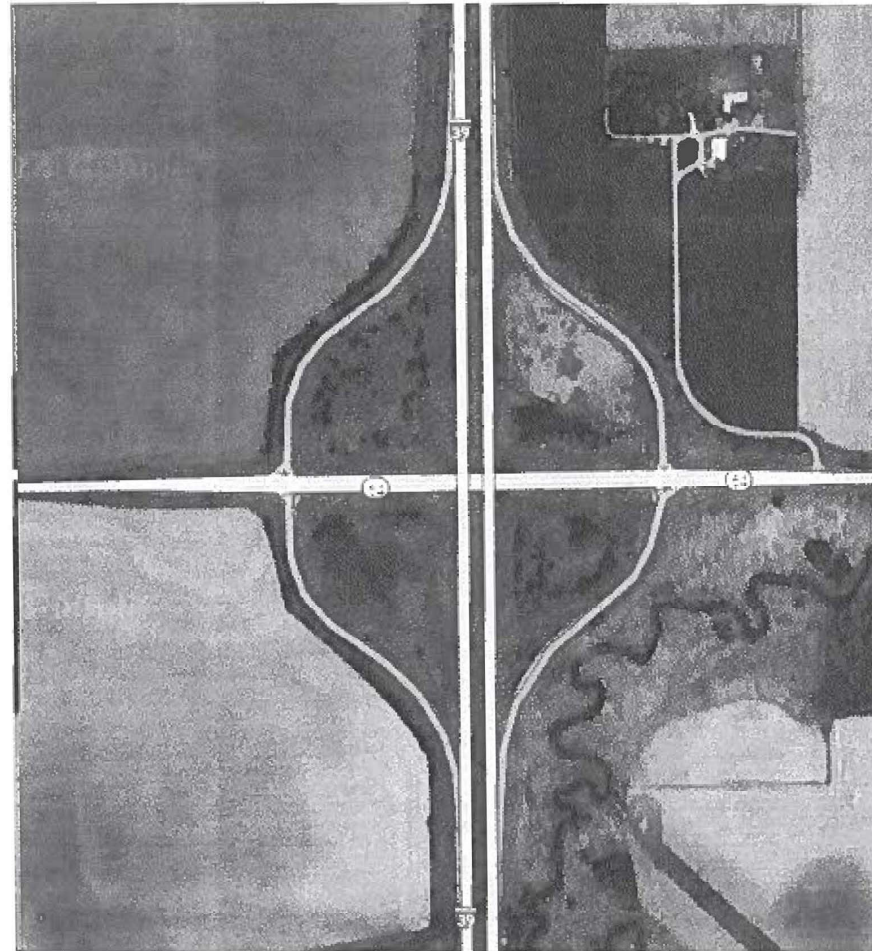
FAI ROUTE 39(I-39)
SECTION (141-2)L
PROJECT NHPP-1AYT(305)
TYPE of IMPROVEMENT
OGLE COUNTY

D92-068-24



LOCATION OF SECTION INDICATED THIS: [arrow pointing to Ogle County]

C-92-068-24



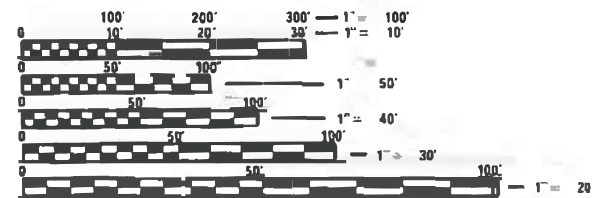
LOCATION
I-39 AT IL 64

INDEX OF SHEETS

- E1 COVER SHEET, INDEX OF SHEETS AND STANDARDS
- E2 GENERAL NOTES, LEGEND, UTILITIES AND SUMMARY OF QUANTITIES
- E3- E6 LIGHTING REMOVAL PLAN
- E7 - E10 LIGHTING PLAN
- E11 WIRING DIAGRAM AND LUMINAIRE PERFORMANCE TABLE

HIGHWAY STANDARDS

821101-03	701101-05	701456-05
825011-04	701400-12	701701-10
830001-03	701406-13	701901-10
836001-05	701411-09	
838001-01	701426-09	



FULL SIZE PLANS HAVE BEEN PREPARED USING STANDARD ENGINEERING SCALES. REDUCED SIZED PLANS WILL NOT CONFORM TO STANDARD SCALES. IN MAKING MEASUREMENTS ON REDUCED PLANS THE ABOVE SCALES MAY BE USED.

J.U.L.I.E.
JOINT UTILITY LOCATION INFORMATION FOR EXCAVATORS
1-800-892-0123
OR 811

PROJECT ENGINEER SCOTT KULLERSTRAND
PROJECT MANAGER
EMAIL: SCOTT.KULLERSTRAND@ILLINOIS.GOV
815-284-5468
CONTRACT NO. 64T04

TOWNSHIP SECTION 16
R 2 E - T 41 N

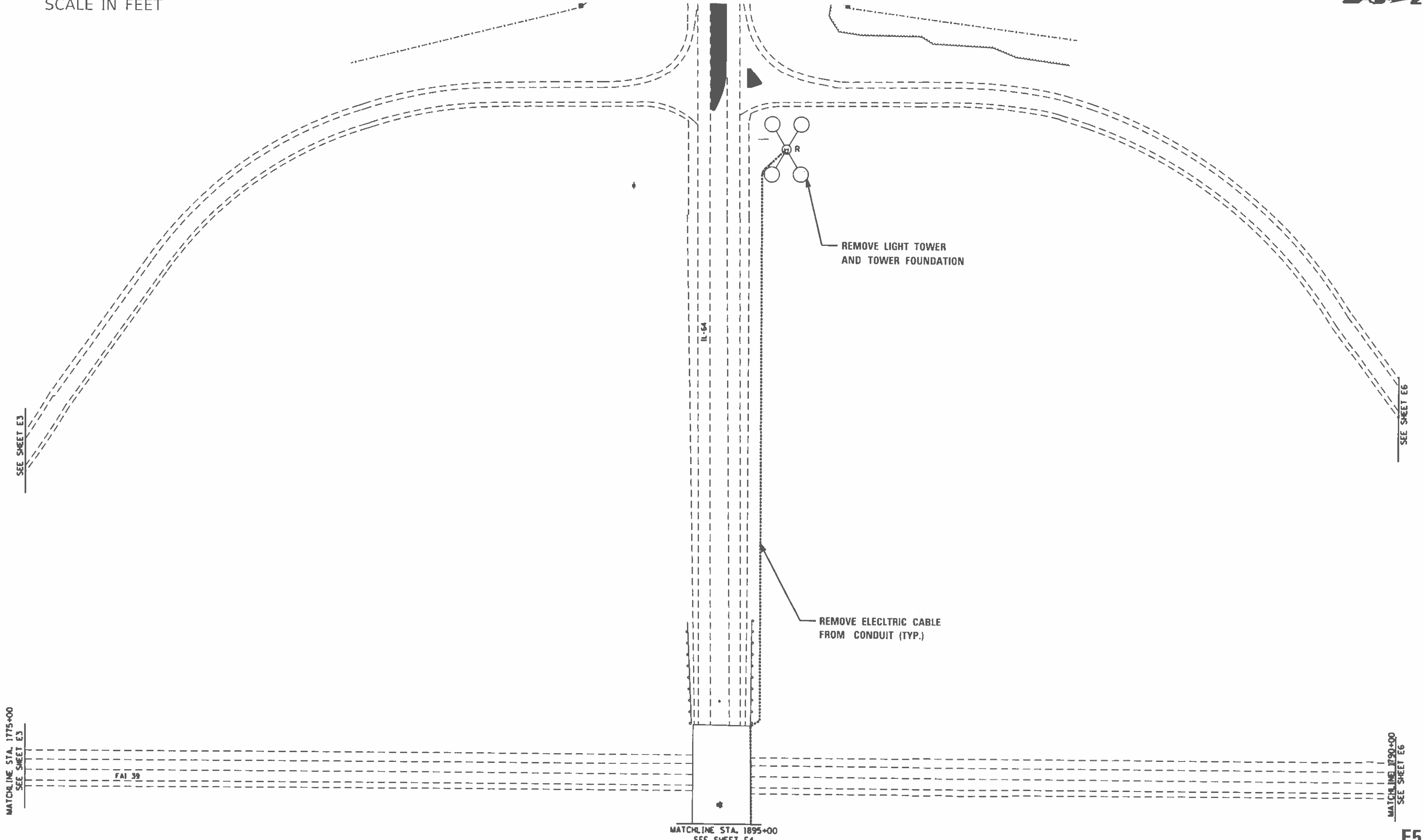
STATE OF ILLINOIS
DEPARTMENT OF TRANSPORTATION

SUBMITTED 7-19-2024
[Signature]
REGIONAL ENGINEER

December 6, 2024
[Signature]
ENGINEER OF DESIGN AND ENVIRONMENT

December 6, 2024
[Signature]
DIRECTOR OF HIGHWAYS PROJECT IMPLEMENTATION

PRINTED BY THE AUTHORITY
OF THE STATE OF ILLINOIS



MODEL: Default
 FILE NAME: C:\Operations\Illinois\Projects\64T04_Support\11-11-2024\64T04_Support\11-11-2024_64T04_Support\11-11-2024_64T04_Support.dwg
 PLOT DATE: Oct 02 2024 10:45:09 AM

MATCHLINE STA. 1775+00
SEE SHEET E3

MATCHLINE STA. 1790+00
SEE SHEET E6

MATCHLINE STA. 1895+00
SEE SHEET E4

E5

USER NAME	Krsline Hill	DESIGNED		REVISED	
DRAWN		CHECKED		REVISED	
DATE				REVISED	

STATE OF ILLINOIS
DEPARTMENT OF TRANSPORTATION

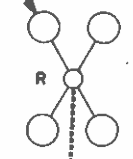
LIGHTING REMOVAL PLAN
I-39 & IL-64

F.A. J. RTE.	SECTION	COUNTY	TOTAL SHEETS	SHEET NO.
39	141-2L	OGLE	11	5
CONTRACT NO. 64T04				
ILLINOIS FED. AID PROJECT				

SCALE _____ SHEET _____ OF _____ SHEETS STA _____ TO STA _____



REMOVE LIGHT TOWER
AND TOWER FOUNDATION



REMOVE ELECCLRIC CABLE
FROM CONDUIT (TYP.)

MATCHLINE STA. 1790+00
SEE SHEET E4

SEE SHEET E5

FAI 39

FAI 39



SCALE IN FEET

\\PC01E1\Delou\...
FILE NAME: S:\Operations\...
Support Files\107-64T04_Support_Files\107-64T04_Aerial.mxd

USER NAME = khilme-hil	DESIGNED =	REVISED =
PLOT SCALE = 1/8" = 1'-0"	DRAWN =	REVISED =
PLOT DATE = Oct 07 2024 10:38 AM	CHECKED =	REVISED =
	DATE =	REVISED =

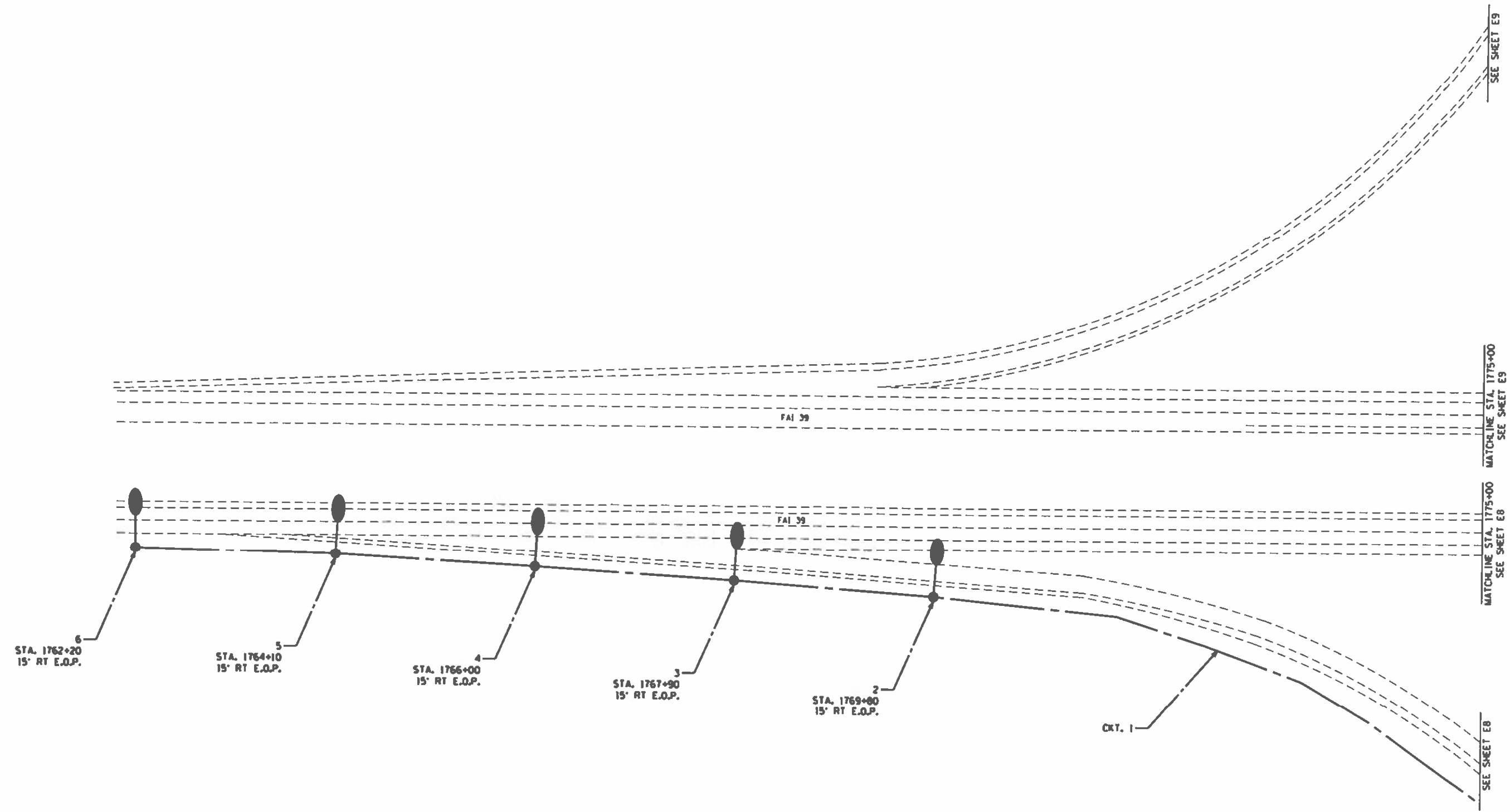
STATE OF ILLINOIS
DEPARTMENT OF TRANSPORTATION

LIGHTING REMOVAL PLAN
I-39 & IL-64

SCALE: SHEET OF SHEETS STA. TO STA.

F A I	SECTION	COUNTY	TOTAL SHEETS	SHEET NO.
39	141 2L	OGLE	11	6
CONTRACT NO. 64T04				
ILLINOIS FED. AID PROJECT				

E6



E7

MODEL: Default
 FILE NAME: S:\projects\2024\11\03\21\110321_110321.dwg
 SUBPLOT: 110321_110321.dwg
 PLOT DATE: 11/03/24 11:03:21 AM

USER NAME	Kristine Hill	DESIGNED		REVISED	
DRAWN		CHECKED		REVISED	
DATE				REVISED	

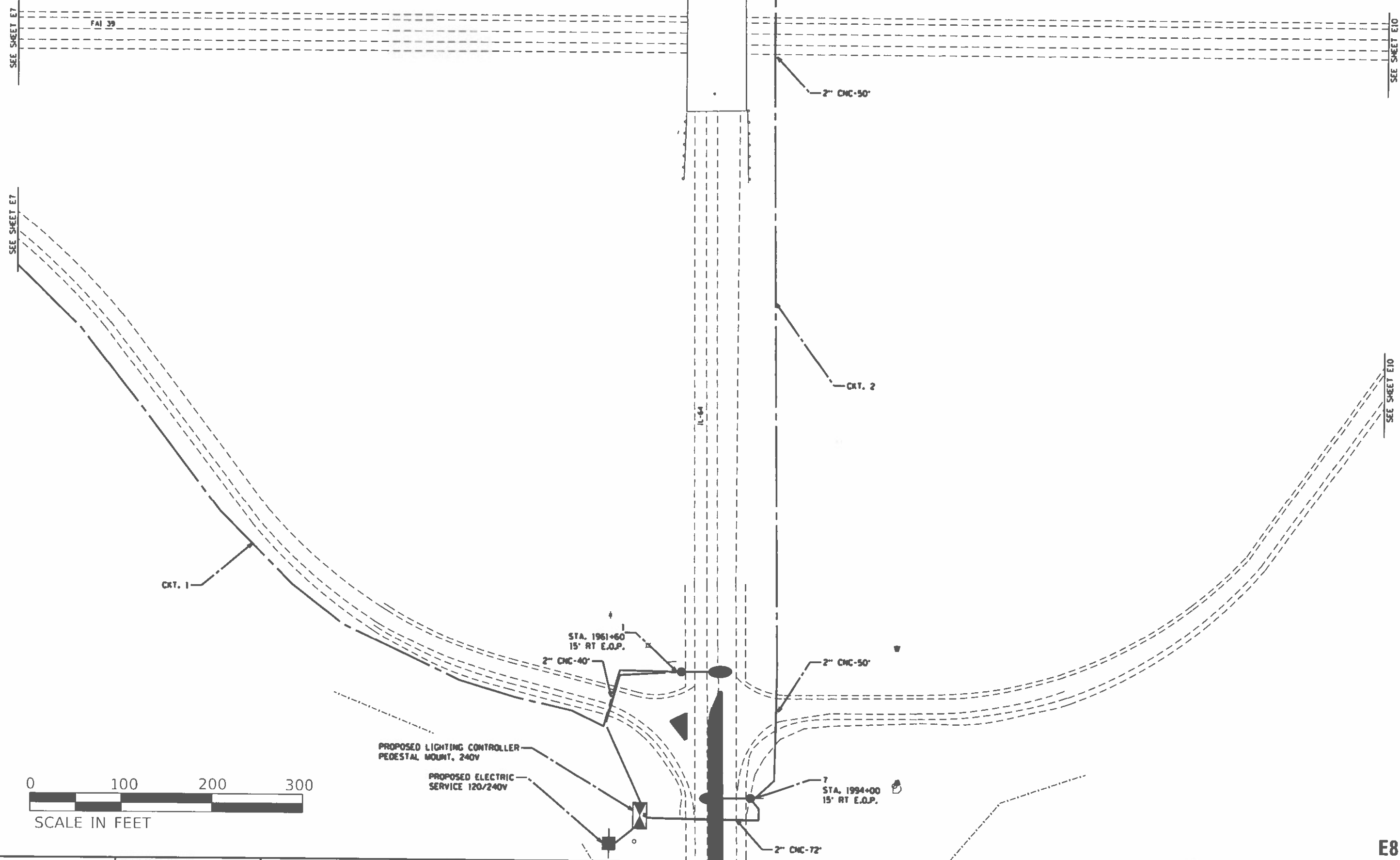
STATE OF ILLINOIS
DEPARTMENT OF TRANSPORTATION

PROPOSED LIGHTING PLAN			
I-39 & IL-64			
SCALE	SHEET	OF	SHEETS
STA	TO STA		

F A I R T E 39	SECTION 141 21	COUNTY OGLE	TOTAL SHEETS 11	SHEET NO 7
CONTRACT NO. 64T04				
ILLINOIS FED AID PROJECT				



MATCHLINE STA. 1895+00
SEE SHEET E9



PROPOSED LIGHTING CONTROLLER
PEDESTAL MOUNT, 240V

PROPOSED ELECTRIC
SERVICE 120/240V

STA. 1961+60
15' RT E.O.P.

7
STA. 1994+00
15' RT E.O.P.

STATE OF ILLINOIS
DEPARTMENT OF TRANSPORTATION

PROPOSED LIGHTING PLAN
I-39 & IL-64

E8

USER NAME = Kivshin@ill	DESIGNED	REVISED
PLOT SCALE = 102.2276' / in	DRAWN	REVISED
PLOT DATE = Oct-02-2024 11:08:22 AM	CHECKED	REVISED
	DATE	REVISED

SCALE	SHEET	OF	SHEETS	STA	TO STA
-------	-------	----	--------	-----	--------

F A I R T E 39	SECTION 141.24	COUNTY OGLE	TOTAL SHEETS 11	SHEET NO 8
CONTRACT NO. 64104			ILLINOIS FED AID PROJECT	

MODEL: D:\p\m\ Operations\plans\hmc\cn_64104_138_n_ill_64023&6404_Support_MetSD2_64104_Support_Fig02_64104_Light2.dwg
 FILE NAME: S:\Operations\plans\hmc\cn_64104_138_n_ill_64023&6404_Support_MetSD2_64104_Support_Fig02_64104_Light2.dwg



9
STA. 1886+00
15' RT E.O.P.

2" CMC-75'

2" CMC-55'

8
STA. 1887+40
15' LT E.O.P.

SEE SHEET E7

SEE SHEET E10

MATCHLINE STA. 1775+00
SEE SHEET E7

MATCHLINE STA. 1790+00
SEE SHEET E10

MATCHLINE STA. 1895+00
SEE SHEET E8

MODEL: Default
FILE NAME: S:\Operations\Projects\11111111\11111111.dwg
USER: 11111111
DATE: 11/11/11
PROJECT: 11111111
SHEET: 11111111
SCALE: 11111111
DRAWN: 11111111
CHECKED: 11111111
DATE: 11/11/11
PROJECT: 11111111
SHEET: 11111111
SCALE: 11111111

USER NAME	DESIGNED	REVISED
DRAWN	REVISION	REVISION
CHECKED	REVISION	REVISION
DATE	REVISION	REVISION

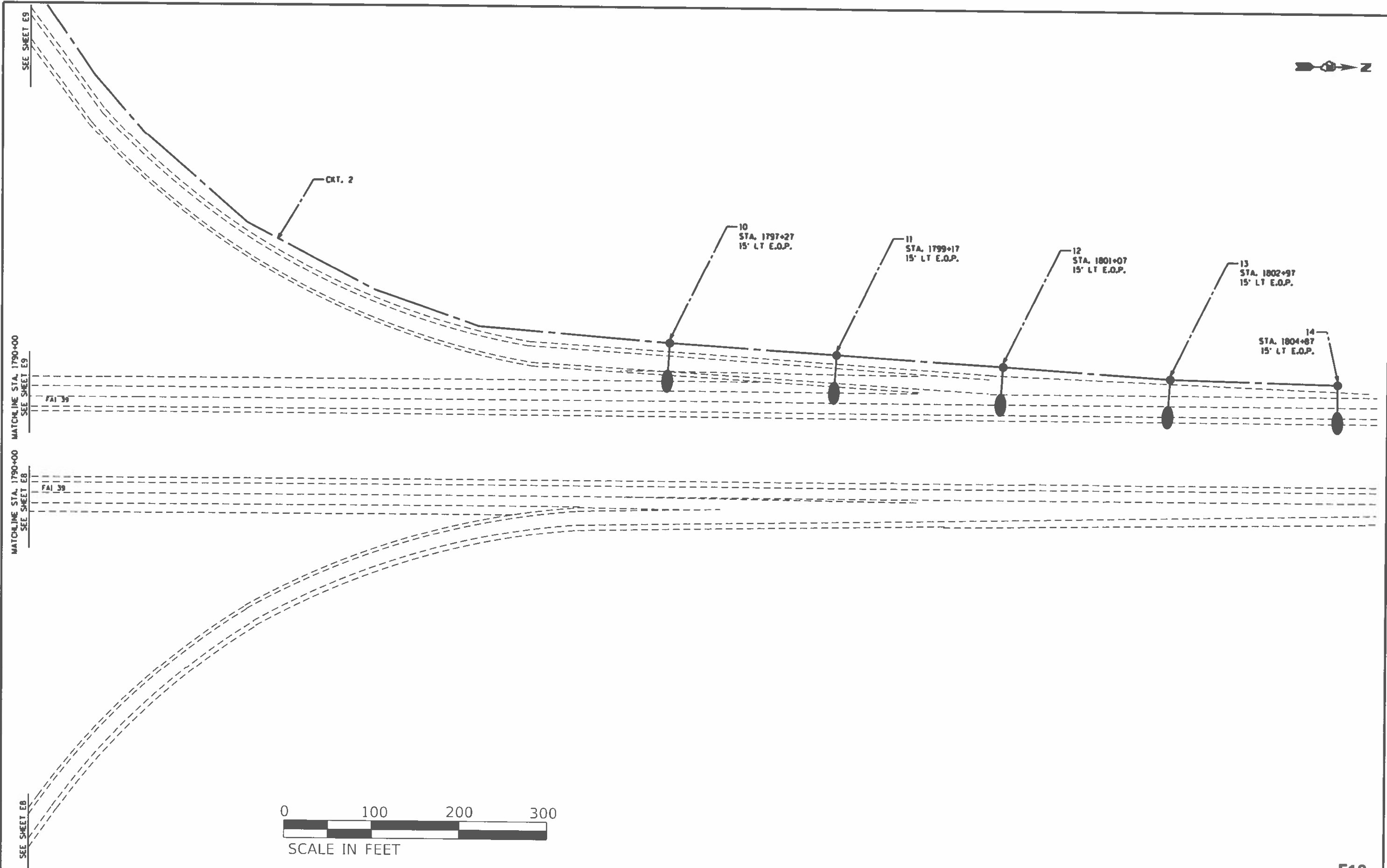
STATE OF ILLINOIS
DEPARTMENT OF TRANSPORTATION

LIGHTING REMOVAL PLAN
I-39 & IL-64

F.A.I. RTE.	SECTION	COUNTY	TOTAL SHEETS	SHEET NO.
39	141-2L	OGLE	11	9
CONTRACT NO. 64104			ILLINOIS FED. AID PROJECT	

SCALE: SHEET OF SHEETS STA TO STA

E9



MODEL: D:\AutoCAD\Drawings\Projects\64104\64104.dwg
 FILE NAME: S:\Operations\supplemental\64104\64104.dwg
 PLOT DATE: 10/02/2024 11:18:36 AM

USER NAME = Kristine Hill	DESIGNED	REVISED
PLOT SCALE = 1/32" = 1' in	DRAWN	REVISED
PLOT DATE = Oct 02 2024 11:18:36 AM	CHECKED	REVISED
	DATE	REVISED

STATE OF ILLINOIS
DEPARTMENT OF TRANSPORTATION

PROPOSED LIGHTING PLAN
1-39 & 11-64

F.A.I. RTE. = 39	SECTION = 11-2L	COUNTY = OGLE	TOTAL SHEETS = 11	SHEET NO. = 10
CONTRACT NO. 64104				
ILLINOIS FED AID PROJECT				

E10

Luminaire Performance Table

Project

Date	Contract Number	Section Number	County
03/06/2024	64T04	N/A	OGLE
Marked Route Number		Municipality	
I-39 AND IL-64		N/A	

Roadway

Lane Width	# of Lanes	Median Width	I.E.S. Surface Classification	Q-Zero Value
16	1	N/A	R3	0.07

Structure

Mounting Height	Arm Length	Set Back	Number of Luminaires Rightmost & Sign Lighting Only
40 FT	15 FT	15 FT	N/A

Luminaire

Description	I.E.S. Transverse Distribution	I.E.S. Lateral Distribution
ROADWAY LUMINAIRE, LED, OUTPUT DESIGNATION G	TYPE III	MEDIUM
Total Light Loss Factor (LLF)	BUG Rating	Shielding
0.7	U = 0	N/A
		Dimming Protocol
		10V

Layout

Spacing (to Nearest 5 Ft) Configuration (Opposite, Staggered, 1 Sided, or Median)
190 FT SINGLE SIDED

Performance

Average Illuminance, E_{avg} (fc)	Uniformity Ratio, E_{avg}/E_{min}		
0.8	3.0		
Average Luminance, L_{avg} (cd/m ²)	Uniformity Ratio, L_{avg}/L_{min}	Uniformity Ratio, L_{max}/L_{min}	Veiling Luminance Ratio, L_v/L_{min}
N/A	N/A	N/A	0.31

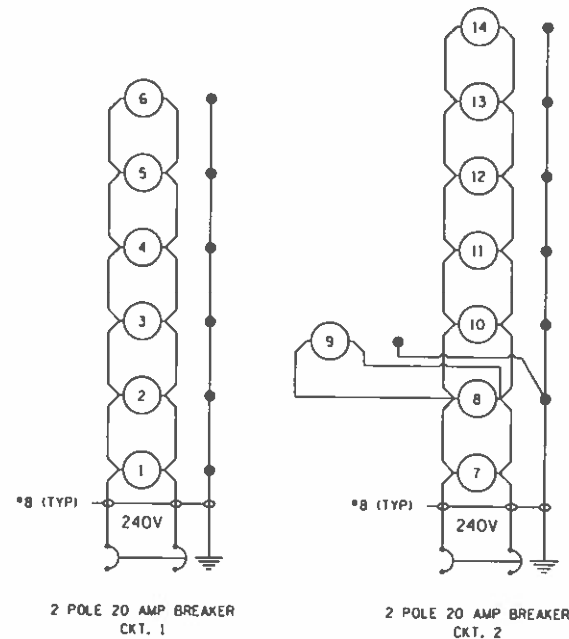
Light Trespass

Distance to ROW (behind pole)	Max. Horizontal Illuminance at ROW, E	Max. Vertical Illuminance at ROW, E
N/A	N/A	N/A

Notes

- Set Back is from Edge of Pavement (white line) except for sign luminaires when it is vertical and horizontal distance from the sign to the luminaire.
- Lighting calculations shall be performed with all luminaires oriented toward and perpendicular to roadway.
- Total Light Loss Factor (LLF) = the product of "Lumen Maintenance" (LLD) = 0.9, "Dirt Depreciation" (LDD) = 0.8, and "Equipment Factors" (EF) = 0.95.
- Performance requirements shall be the minimum acceptable standards of photometric performance for the luminaire, based on the given conditions above.

CALCULATIONS ARE TO BE PERFORMED IN ONE DIRECTION ONLY.
COMPLIANCE WITH PERFORMANCE CRITERIA SHALL BE HELD TO ONE SIGNIFICANT DIGIT.



I-39 AND IL-64

PROPOSED LIGHTING CONTROLLER,
PEDESTAL MOUNTED, 240V, 60AMP

LEGEND:

- ① PROPOSED LIGHTING UNIT
- ⏏ GROUND ROD

NOTES:

- ALL NECESSARY REVISIONS TO THE WIRING SHOWN ON THIS SHEET SHALL BE MADE AT NO ADDITIONAL COST TO THE DEPARTMENT AND TO THE SATISFACTION OF THE ENGINEER.

USER NAME: Kralina.Hill	DESIGNED: _____	REVISED: _____	STATE OF ILLINOIS DEPARTMENT OF TRANSPORTATION	WIRING DIAGRAM AND LUMINAIRE PERFORMANCE TABLE	DATE: 03/06/2024	SECTION: 141-2L	COUNTY: OGLE	TOTAL SHEETS: 11	SHEET NO: 11	
PLOT SCALE: 1/8" = 1'-0"	DRAWN: _____	REVISED: _____			SCALE: _____	SHEET OF SHEETS: _____	CONTRACT NO. 64T04	ILLINOIS FED AID PROJECT		
PLOT DATE: 03/06/2024 11:22:11 AM	CHECKED: _____	REVISED: _____								