

STATE OF ILLINOIS
DEPARTMENT OF TRANSPORTATION

F.A. RTE.	SECTION	COUNTY	TOTAL SHEETS	SHEET NO.
VARIOUS	D3 LIGHTING REPAIR 2025-1	GRUNDY	5	1
		ILLINOIS	CONTRACT NO. 66P96	

INDEX OF SHEETS

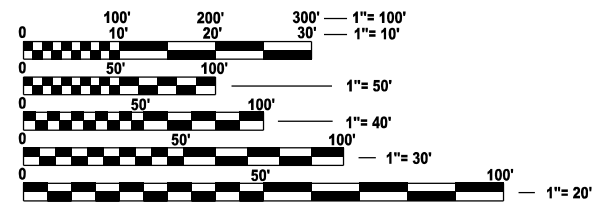
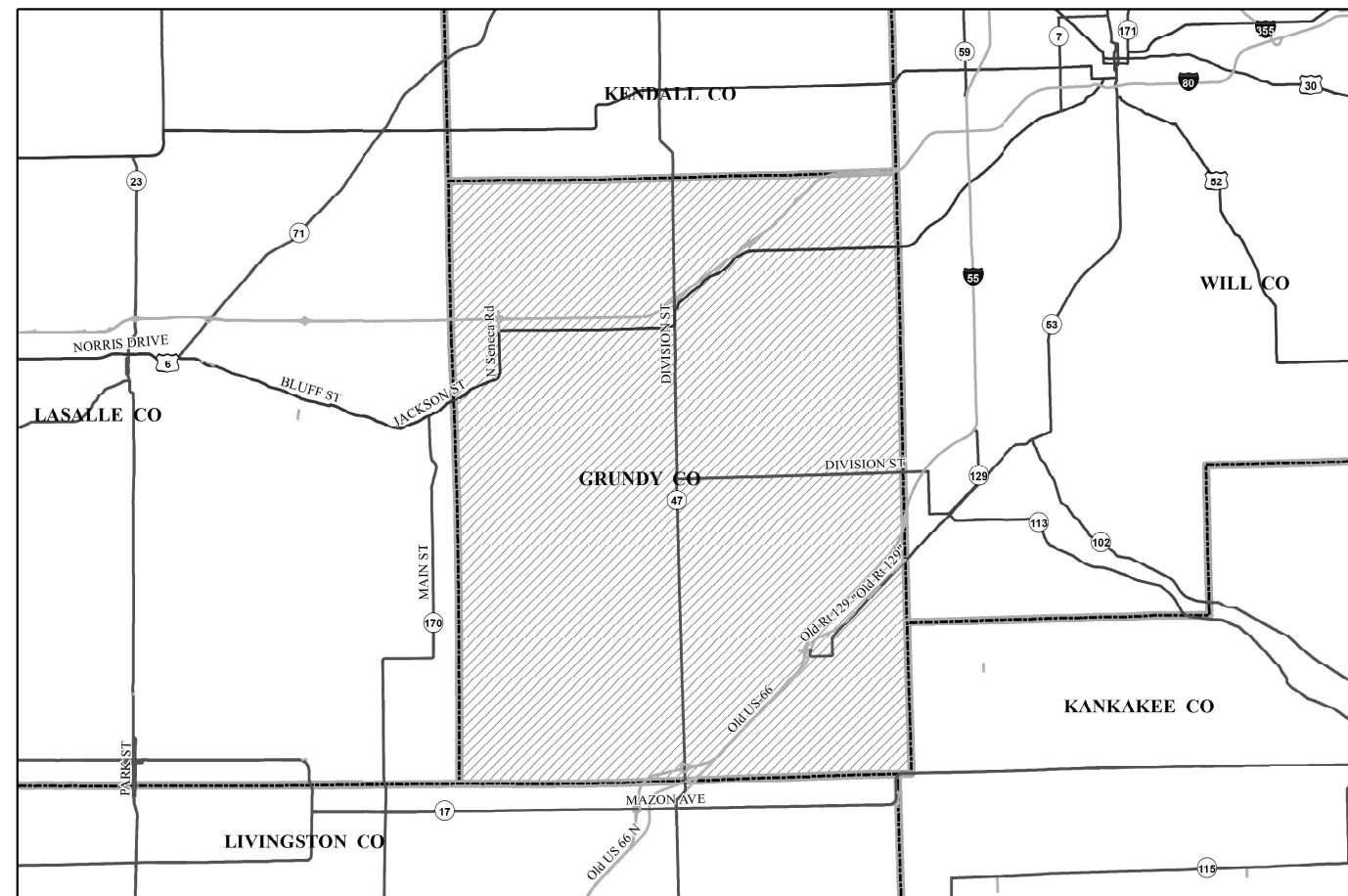
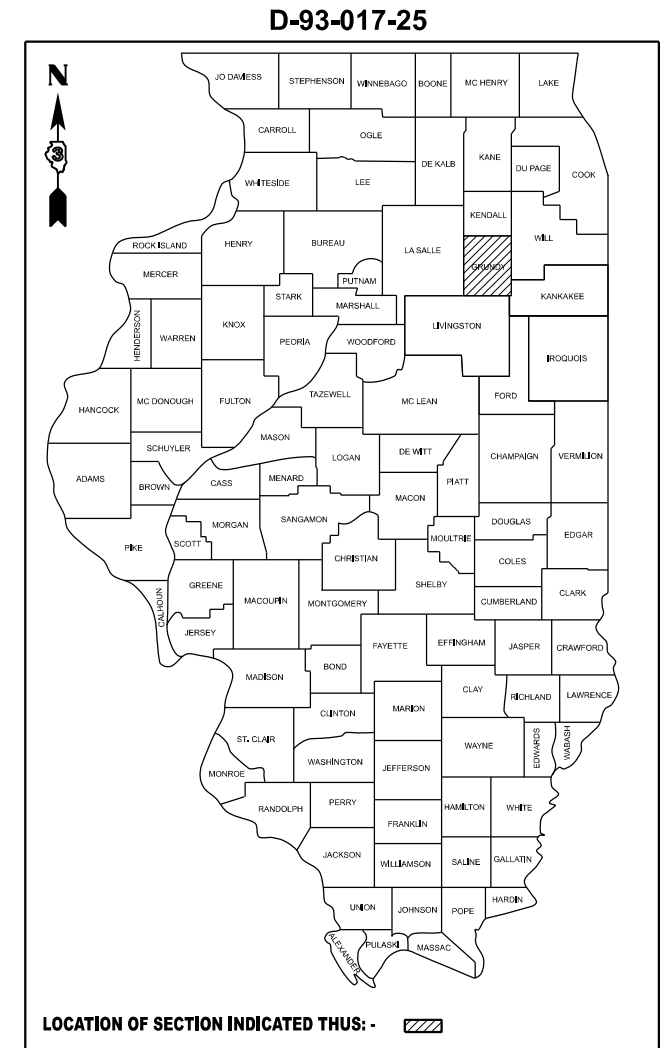
- 1 COVER SHEET
- 2 GENERAL NOTES & HWY STANDARDS
- 3 - 5 SUMMARY OF QUANTITIES

FOR LIST OF HIGHWAY STANDARDS SEE SHEET 2

**PROPOSED
HIGHWAY PLANS**

**VARIOUS ROUTES
SECTION D3 LIGHTING REPAIR 2025-1
PROJECT
AREA ONE ON CALL LIGHTING REPAIR
GRUNDY COUNTY**

C-93-041-25



FULL SIZE PLANS HAVE BEEN PREPARED USING STANDARD ENGINEERING SCALES. REDUCED SIZED PLANS WILL NOT CONFORM TO STANDARD SCALES. IN MAKING MEASUREMENTS ON REDUCED PLANS, THE ABOVE SCALES MAY BE USED.

J.U.L.I.E.
JOINT UTILITY LOCATION INFORMATION FOR EXCAVATION
1-800-892-0123
OR 811

DISTRICT 3 NO. (815)-434-6131
PROJECT ENGINEER: JOE KANNEL, P.E.
UNIT CHIEF: STEPHENIE CARMIN

CONTRACT NO. 66P96

STATE OF ILLINOIS
DEPARTMENT OF TRANSPORTATION

SUBMITTED October 18, 2024

Trisha Thompson REGIONAL ENGINEER

December 6, 2024

Scott A. Elk
ENGINEER OF DESIGN AND ENVIRONMENT

December 6, 2024

James J. Gu
DIRECTOR OF HIGHWAYS PROJECT IMPLEMENTATION 13

**PRINTED BY THE AUTHORITY
OF THE STATE OF ILLINOIS**

GENERAL NOTES

REMOVAL OF DAMAGED MATERIALS SHALL INCLUDE DISMANTLING, LOADING, HAULING, AND DISPOSAL.

THE WORK SITE SHALL BE LEFT IN A SAFE AND ORDERLY CONDITION.

NO MATERIAL SHOULD BE LEFT ON OR NEAR THE ROADWAY.

ALL EXCAVATED MATERIAL, WHICH INCLUDES DIGGING OR GRADING OF ANY SOIL OR FILL MATERIAL, WITH THE EXCEPTION OF AGGREGATE FILLS, INCORPORATED WITHIN, THE IDOT RIGHT OF WAY DUE TO ENVIRONMENTAL DOCUMENTATION REQUIREMENTS.

ALL AREAS DISTURBED BY THE CONTRACTOR SHALL BE RESTORED WITH SEED OR SOD TO THE SATISFACTION OF THE ENGINEER.

ANY WORK ORDER MAY BE CANCELLED AT THE ENGINEERS DISCRETION.

NO OVERNIGHT LANE CLOSURES WILL BE ALLOWED.

LIST OF ILLINOIS DOT HIGHWAY STANDARDS

000001-08	STANDARD SYMBOLS, ABBREVIATIONS AND PATTERNS
001006	DECIMAL OF AN INCH AND OF A FOOT
701001-02	OFF-ROAD OPERATIONS 2L, 2W, MORE THAN 15' AWAY
701006-05	OFF-ROAD OPERATIONS 2L, 2W, 15' TO 24" FROM PAVEMENT EDGE
701101-05	OFF-ROAD OPERATIONS, MULTILANE, 15' TO 24" FROM PAVEMENT EDGE
701106-02	OFF-ROAD OPERATIONS, MULTILANE, MORE THAN 15' AWAY
701201-05	LANE CLOSURE, 2L, 2W, DAY ONLY, FOR SPEEDS ≥ 45 MPH
701206-05	LANE CLOSURE, 2L, 2W, NIGHT ONLY, FOR SPEEDS ≥ 45 MPH
701301-04	LANE CLOSURE, 2L, 2W, SHORT TIME OPERATIONS
701306-04	LANE CLOSURE, 2L, 2W, SLOW MOVING OPERATIONS DAY ONLY, FOR SPEEDS ≥ 45 MPH
701311-03	LANE CLOSURE, 2L, 2W, MOVING OPERATIONS - DAY ONLY
701400-12	APPROACH TO LANE CLOSURE, FREEWAY/EXPRESSWAY
701401-13	LANE CLOSURE, FREEWAY/EXPRESSWAY
701406-13	LANE CLOSURE, FREEWAY/EXPRESSWAY, DAY OPERATIONS ONLY
701411-09	LANE CLOSURE, MULTILANE, AT ENTRANCE OR EXIT RAMP FOR SPEEDS ≥ 45 MPH
701421-08	LANE CLOSURE, MULTILANE, DAY OPERATIONS ONLY, FOR SPEEDS ≥ 45 MPH TO 55 MPH
701422-10	LANE CLOSURE, MULTILANE, FOR SPEEDS ≥ 45 MPH TO 55 MPH
701426-09	LANE CLOSURE, MULTILANE INTERMITTENT OR MOVING OPERATION, FOR SPEEDS ≥ 45 MPH
701427-05	LANE CLOSURE, MULTILANE INTERMITTENT OR MOVING OPERATION, FOR SPEEDS ≤ 40 MPH
701428-01	TRAFFIC CONTROL, SETUP AND REMOVAL, FREEWAY/EXPRESSWAY
701431-13	LANE CLOSURE, MULTILANE, UNDIVIDED WITH CROSSOVER, FOR SPEEDS ≥ 45 MPH TO 55 MPH
701446-11	TWO LANE CLOSURE, FREEWAY/EXPRESSWAY
701451-05	RAMP CLOSURE FREEWAY/EXPRESSWAY
701456-05	PARTIAL EXIT RAMP CLOSURE FREEWAY/EXPRESSWAY
701501-06	URBAN LANE CLOSURE, 2L, 2W, UNDIVIDED
701502-09	URBAN LANE CLOSURE 2L, 2W, WITH BIDIRECTIONAL LEFT TURN LANE
701601-09	URBAN LANE CLOSURE, MULTILANE, 1W OR 2W WITH NONTRAVERSABLE MEDIAN
701602-10	URBAN LANE CLOSURE, MULTILANE, 2W WITH BIDIRECTIONAL LEFT TURN LANE
701606-10	URBAN LANE CLOSURE, MULTILANE, 2W WITH MOUNTABLE MEDIAN
701701-10	URBAN LANE CLOSURE, MULTILANE INTERSECTION
701801-06	SIDEWALK, CORNER OR CROSSWALK CLOSURE
701901-09	TRAFFIC CONTROL DEVICES
821101-02	LUMINAIRE WIRING IN POLE
838001-01	BREAKAWAY DEVICES
862001-01	UNINTERRUPTABLE POWER SUPPLY (UPS)
873001-02	TRAFFIC SIGNAL GROUNDING & BONDING
880001-01	SPAN WIRE MOUNTED SIGNALS AND FLASHING BEACON INSTALLATION
880006-01	TRAFFIC SIGNAL MOUNTING DETAILS

COMMITMENTS

NONE

STATE OF ILLINOIS
DEPARTMENT OF TRANSPORTATION
DISTRICT THREE
AS BUILT INFORMATION

SUPERVISING CONSTRUCTION FIELD ENGINEER

RESIDENT ENGINEER / TECHNICIAN

START & END DATES
OF CONSTRUCTION:

INSPECTORS:

MODEL: Default
FILE NAME: P:\workspace\hwy.com\PM\DOT\Documents\DOT Office\District 3\CRED Project\66P96\CAD\66P96-Cover

USER NAME = Joseph.Zagar	DESIGNED -	REVISED -	STATE OF ILLINOIS DEPARTMENT OF TRANSPORTATION	GENERAL NOTES AND HIGHWAY STANDARDS IDOT DISTRICT 3 ELECTRICAL MAINTENANCE CONTRACT			F.A. RTE.	SECTION	COUNTY	TOTAL SHEETS	SHEET NO.
DRAWN -	REVISIED -	VARIOUS					D3 LIGHTING REPAIR 2025-1	GRUNDY	5	2	
PLOT SCALE = \$\$SCALE\$	CHECKED -	REVISED -		SCALE: SHEET 1 OF 1 SHEETS STA. TO STA.			CONTRACT NO. 66P96				
PLOT DATE = 10/10/2024	DATE -	REVISED -		ILLINOIS FED. AID PROJECT							

CODE NO.	ITEM	UNIT	TOTAL QUANTITY	CONSTR. CODE	
				STATE FUNDS	
				100%	
				ROADWAY	0021
					GRUNDY
82110007	LUMINAIRE, LED, ROADWAY, OUTPUT DESIGNATION G	EACH	6		6
82110008	LUMINAIRE, LED, ROADWAY, OUTPUT DESIGNATION H	EACH	6		6
82110015	LUMINAIRE, LED, HIGHMAST, OUTPUT DESIGNATION H	EACH	10		10
83800205	BREAKAWAY DEVICE, TRANSFORMER BASE, 15 INCH BOLT CIRCLE	EACH	4		4
83800650	BREAKAWAY DEVICE, COUPLING WITH STAINLESS STEEL SCREEN	EACH	8		8
85000200	MAINTENANCE OF EXISTING TRAFFIC SIGNAL INSTALLATION	EACH	2		2
87502480	TRAFFIC SIGNAL POST, GALVANIZED STEEL 14 FT.	EACH	2		2
87502500	TRAFFIC SIGNAL POST, GALVANIZED STEEL 16 FT.	EACH	2		2
88040070	SIGNAL HEAD, POLYCARBONATE, LED, 1-FACE, 3-SECTION, BRACKET MOUNTED	EACH	2		2
88040090	SIGNAL HEAD, POLYCARBONATE, LED, 1-FACE, 3-SECTION, MAST ARM MOUNTED	EACH	2		2
88040150	SIGNAL HEAD, POLYCARBONATE, LED, 1-FACE, 5-SECTION, BRACKET MOUNTED	EACH	2		2
88040160	SIGNAL HEAD, POLYCARBONATE, LED, 1-FACE, 5-SECTION, MAST ARM MOUNTED	EACH	2		2
88200510	TRAFFIC SIGNAL BACKPLATE, RETROREFLECTIVE	EACH	2		2
89502610	SIGNAL VISOR, TUNNEL TYPE, 12 INCH	EACH	2		2

MODEL: D:\infil...
 FILE NAME: P:\u005cpc\benf...
 MODEL: D:\infil...
 FILE NAME: P:\u005cpc\benf...

USER NAME = Joseph.Zagar	DESIGNED -	REVISED -
PLOT SCALE = \$SCALE\$	DRAWN -	REVISED -
PLOT DATE = 9/11/2024	CHECKED -	REVISED -
	DATE -	REVISED -

STATE OF ILLINOIS
DEPARTMENT OF TRANSPORTATION

SUMMARY OF QUANTITIES
IDOT DISTRICT 3 ELECTRICAL MAINTENANCE CONTRACT

F.A. RTE.	SECTION	COUNTY	TOTAL SHEETS	SHEET NO.
VARIOUS	D3 LIGHTING REPAIR 2025-1	GRUNDY	5	3
CONTRACT NO. 66P96				
SCALE:		SHEET 1 OF 3 SHEETS	STA.	TO STA.
		ILLINOIS FED. AID PROJECT		

CODE NO.	ITEM	UNIT	TOTAL QUANTITY	CONSTR. CODE	
				STATE FUNDS	
				100%	
				ROADWAY	0021
				GRUNDY	
Z0025615	FURNISH AND INSTALL METAL SCREEN	EACH	20	20	
Z0033068	TRAFFIC SIGNAL BATTERY BACKUP SYSTEM	EACH	2	2	
XP000001	JOURNEYMAN ELECTRICIAN	HOUR	1100	1100	
XP000002	APPRENTICE ELECTRICIAN	HOUR	350	350	
XP000003	JOURNEYMAN ELECTRICIAN (WEEKLY OVERTIME RATE)	HOUR	50	50	
XP000004	JOURNEYMAN ELECTRICIAN (SATURDAY OVERTIME RATE)	HOUR	50	50	
XP000005	JOURNEYMAN ELECTRICIAN (SUNDAY AND HOLIDAY OVERTIME RATE)	HOUR	20	20	
XP000006	APPRENTICE ELECTRICIAN (WEEKLY OVERTIME RATE)	HOUR	50	50	
XP000007	APPRENTICE ELECTRICIAN (SATURDAY OVERTIME RATE)	HOUR	50	50	
XP000008	APRRENTICE ELECTRICIAN (SUNDAY AND HOLIDAY OVERTIME RATE)	HOUR	20	20	
XP000009	PICK-UP TRUCK	HOUR	1000	1000	
XP000010	BUCKET TRUCK (LENGTH LESS THAN 35 FEET)	HOUR	16	16	
XP000011	BUCKET TRUCK (LENGTH 35 TO 65 FEET)	HOUR	100	100	
XP000015	DIGGER DERRICK	HOUR	10	10	

MODEL: D:\infil...
 FILE NAME: P:\w\idp\p\c\h\m\y.com\PM\DOT\Documents\DOT Office\District 3\CRD Project\0368\21\CADD\0368\21-4-18-SC0.dgn

USER NAME = Joseph.Zagar	DESIGNED -	REVISED -
PLOT SCALE = \$\$SCALE\$	DRAWN -	REVISED -
PLOT DATE = 9/11/2024	CHECKED -	REVISED -
	DATE -	REVISED -

STATE OF ILLINOIS
DEPARTMENT OF TRANSPORTATION

SUMMARY OF QUANTITIES
IDOT DISTRICT 3 ELECTRICAL MAINTENANCE CONTRACT

F.A. RTE.	SECTION	COUNTY	TOTAL SHEETS	SHEET NO.
VARIOUS	D3 LIGHTING REPAIR 2025-1	GRUNDY	5	4
CONTRACT NO. 66P96				
SCALE:		SHEET 2 OF 3 SHEETS	STA.	TO STA.
		ILLINOIS FED. AID PROJECT		

CONSTR. CODE

STATE FUNDS

100%

ROADWAY

0021

GRUNDY

CODE NO.	ITEM	UNIT	TOTAL QUANTITY	GRUNDY
XP000103	KTQ 5A FUSE	EACH	12	12
XP000106	BUCHANAN FUSEHOLDER KIT	EACH	5	5
XP000188	HANDHOLE, COVER ONLY (NEENAH R-6660-JP)	EACH	2	2
XP000200	LOAD SWITCH, NEMA	EACH	10	10
X0327216	CLOSED CIRCUIT TELEVISION CAMERA	EACH	2	2
X8000001	MAINTAIN EXISTING HIGHWAY LIGHTING	EACH	150	150
X8005020	GFCI 20 AMP DUPLEX RECEPTACLE	EACH	2	2
X8350003	MAINTENANCE OF EXISTING HIGH MAST LIGHT TOWERS	EACH	32	32
X8500110	MAINTENANCE OF EXISTING FLASHING BEACON INSTALLATION	EACH	4	4
X8620310	REMOVE AND REPLACE BATTERIES FOR UNINTERUPTABLE POWER SUPPLY, EXTENDED	EACH	2	2

MODEL: D:\hull...
 FILE NAME: P:\projects\dot\Documents\DOT Office\District 3\CRD Project\036821\CADD\036821-4-14-2024.dgn

USER NAME = Joseph.Zagar	DESIGNED -	REVISED -
PLOT SCALE = \$\$SCALE\$	DRAWN -	REVISED -
PLOT DATE = 9/11/2024	CHECKED -	REVISED -
	DATE -	REVISED -

**STATE OF ILLINOIS
DEPARTMENT OF TRANSPORTATION**

**SUMMARY OF QUANTITIES
IDOT DISTRICT 3 ELECTRICAL MAINTENANCE CONTRACT**

SCALE: SHEET 3 OF 3 SHEETS STA. TO STA.

F.A. RTE.	SECTION	COUNTY	TOTAL SHEETS	SHEET NO.
VARIOUS	D3 LIGHTING REPAIR 2025-1	GRUNDY	5	5
ILLINOIS			FED. AID PROJECT	

CONTRACT NO. 66P96