

STATE OF ILLINOIS  
DEPARTMENT OF TRANSPORTATION

| F.A. RTE. | SECTION                   | COUNTY   | TOTAL SHEETS       | SHEET NO. |
|-----------|---------------------------|----------|--------------------|-----------|
| VARIOUS   | D3 LIGHTING REPAIR 2025-2 | *        | 5                  | 1         |
|           |                           | ILLINOIS | CONTRACT NO. 66P97 |           |

\* BUREAU, DEKALB, LASALLE, & KENDALL

**INDEX OF SHEETS**

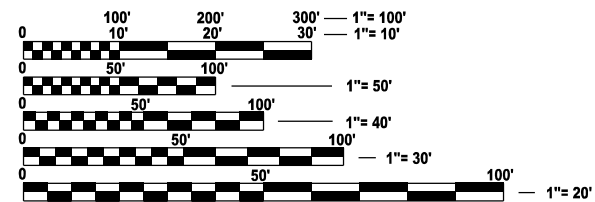
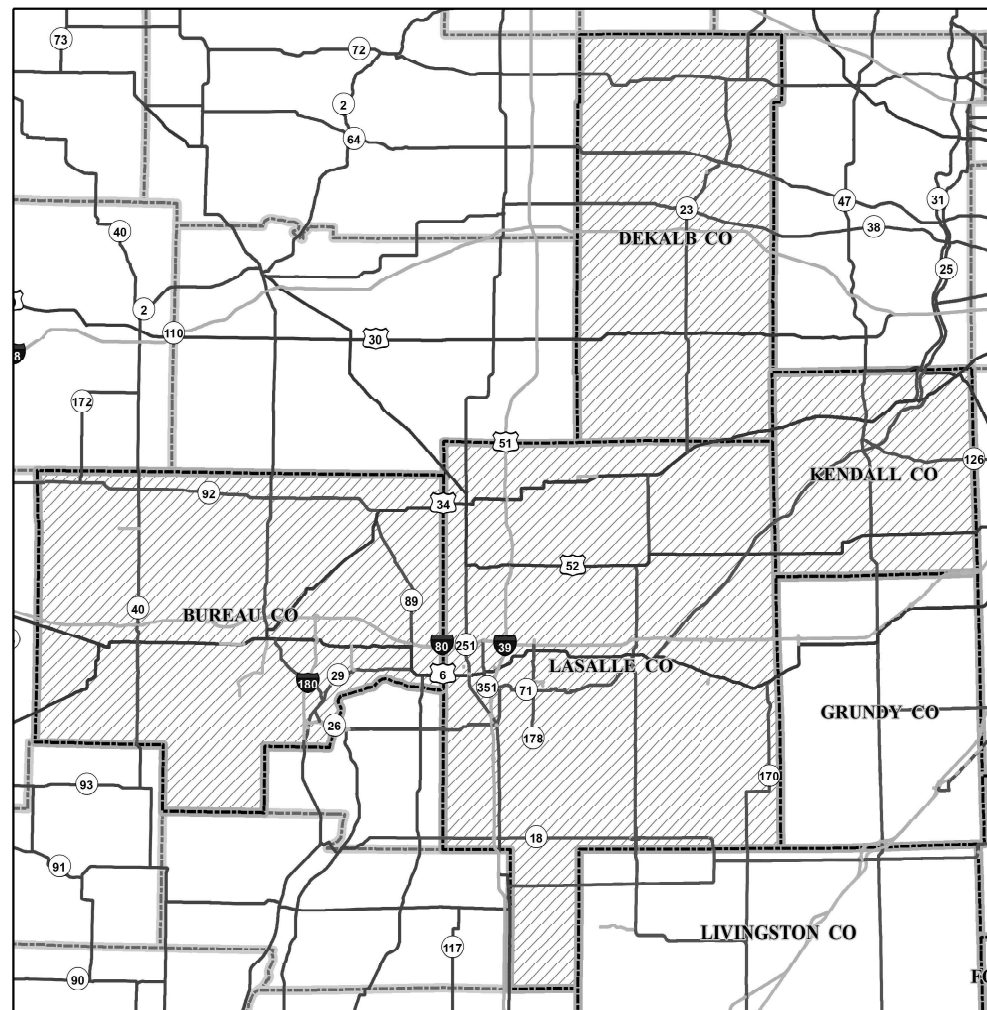
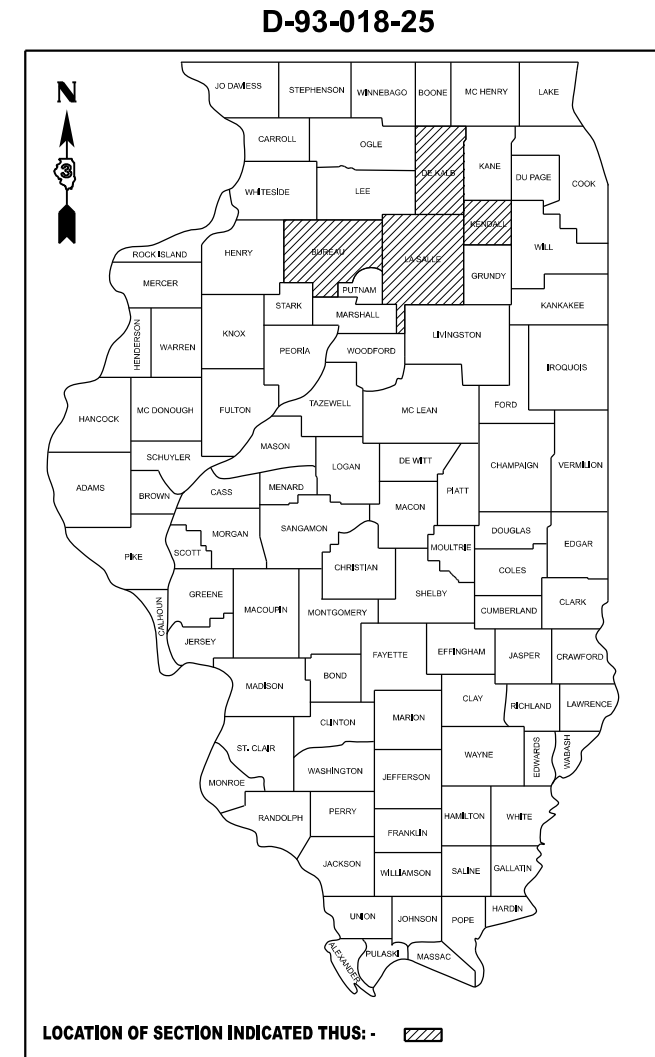
- 1 COVER SHEET
- 2 GENERAL NOTES & HWY STANDARDS
- 3 - 5 SUMMARY OF QUANTITIES

FOR LIST OF HIGHWAY STANDARDS SEE SHEET 2

**PROPOSED  
HIGHWAY PLANS**

**VARIOUS ROUTES  
SECTION D3 LIGHTING REPAIR 2025-2  
PROJECT  
AREA TWO ON CALL LIGHTING REPAIR  
VARIOUS COUNTIES**

C-93-042-25



FULL SIZE PLANS HAVE BEEN PREPARED USING STANDARD ENGINEERING SCALES. REDUCED SIZED PLANS WILL NOT CONFORM TO STANDARD SCALES. IN MAKING MEASUREMENTS ON REDUCED PLANS, THE ABOVE SCALES MAY BE USED.

J.U.L.I.E.  
JOINT UTILITY LOCATION INFORMATION FOR EXCAVATION  
1-800-892-0123  
OR 811

DISTRICT 3 NO. (815)-434-6131  
PROJECT ENGINEER: JOE KANNEL, P.E.  
UNIT CHIEF: STEPHENIE CARMIN

CONTRACT NO. 66P97

STATE OF ILLINOIS  
DEPARTMENT OF TRANSPORTATION

SUBMITTED October 21, 2024

*Trisha Thompson* REGIONAL ENGINEER  
December 6, 2024

*Scott A. Etk* ENGINEER OF DESIGN AND ENVIRONMENT  
December 6, 2024

*James J. ...* DIRECTOR OF HIGHWAYS PROJECT IMPLEMENTATION

**PRINTED BY THE AUTHORITY  
OF THE STATE OF ILLINOIS**

**GENERAL NOTES**

REMOVAL OF DAMAGED MATERIALS SHALL INCLUDE DISMANTLING, LOADING, HAULING, AND DISPOSAL.

THE WORK SITE SHALL BE LEFT IN A SAFE AND ORDERLY CONDITION.

NO MATERIAL SHOULD BE LEFT ON OR NEAR THE ROADWAY.

ALL EXCAVATED MATERIAL, WHICH INCLUDES DIGGING OR GRADING OF ANY SOIL OR FILL MATERIAL, WITH THE EXCEPTION OF AGGREGATE FILLS, INCORPORATED WITHIN, THE IDOT RIGHT OF WAY DUE TO ENVIRONMENTAL DOCUMENTATION REQUIREMENTS.

ALL AREAS DISTURBED BY THE CONTRACTOR SHALL BE RESTORED WITH SEED OR SOD TO THE SATISFACTION OF THE ENGINEER.

ANY WORK ORDER MAY BE CANCELLED AT THE ENGINEERS DISCRETION.

NO OVERNIGHT LANE CLOSURES WILL BE ALLOWED.

**LIST OF ILLINOIS DOT HIGHWAY STANDARDS**

|           |  |
|-----------|--|
| 000001-08 | STANDARD SYMBOLS, ABBREVIATIONS AND PATTERNS                                     |
| 001006    | DECIMAL OF AN INCH AND OF A FOOT   |
| 701001-02 | OFF-ROAD OPERATIONS 2L, 2W, MORE THAN 15' AWAY                                   |
| 701006-05 | OFF-ROAD OPERATIONS 2L, 2W, 15' TO 24" FROM PAVEMENT EDGE                        |
| 701101-05 | OFF-ROAD OPERATIONS, MULTILANE, 15' TO 24" FROM PAVEMENT EDGE                    |
| 701106-02 | OFF-ROAD OPERATIONS, MULTILANE, MORE THAN 15' AWAY                               |
| 701201-05 | LANE CLOSURE, 2L, 2W, DAY ONLY, FOR SPEEDS ≥ 45 MPH                              |
| 701206-05 | LANE CLOSURE, 2L, 2W, NIGHT ONLY, FOR SPEEDS ≥ 45 MPH                            |
| 701301-04 | LANE CLOSURE, 2L, 2W, SHORT TIME OPERATIONS                                      |
| 701306-04 | LANE CLOSURE, 2L, 2W, SLOW MOVING OPERATIONS DAY ONLY, FOR SPEEDS ≥ 45 MPH       |
| 701311-03 | LANE CLOSURE, 2L, 2W, MOVING OPERATIONS - DAY ONLY                               |
| 701400-12 | APPROACH TO LANE CLOSURE, FREEWAY/EXPRESSWAY                                     |
| 701401-13 | LANE CLOSURE, FREEWAY/EXPRESSWAY   |
| 701406-13 | LANE CLOSURE, FREEWAY/EXPRESSWAY, DAY OPERATIONS ONLY                            |
| 701411-09 | LANE CLOSURE, MULTILANE, AT ENTRANCE OR EXIT RAMP FOR SPEEDS ≥ 45 MPH            |
| 701421-08 | LANE CLOSURE, MULTILANE, DAY OPERATIONS ONLY, FOR SPEEDS ≥ 45 MPH TO 55 MPH      |
| 701422-10 | LANE CLOSURE, MULTILANE, FOR SPEEDS ≥ 45 MPH TO 55 MPH                           |
| 701426-09 | LANE CLOSURE, MULTILANE INTERMITTENT OR MOVING OPERATION, FOR SPEEDS ≥ 45 MPH    |
| 701427-05 | LANE CLOSURE, MULTILANE INTERMITTENT OR MOVING OPERATION, FOR SPEEDS ≤ 40 MPH    |
| 701428-01 | TRAFFIC CONTROL, SETUP AND REMOVAL, FREEWAY/EXPRESSWAY                           |
| 701431-13 | LANE CLOSURE, MULTILANE, UNDIVIDED WITH CROSSOVER, FOR SPEEDS ≥ 45 MPH TO 55 MPH |
| 701446-11 | TWO LANE CLOSURE, FREEWAY/EXPRESSWAY   |
| 701451-05 | RAMP CLOSURE FREEWAY/EXPRESSWAY  |
| 701456-05 | PARTIAL EXIT RAMP CLOSURE FREEWAY/EXPRESSWAY                                     |
| 701501-06 | URBAN LANE CLOSURE, 2L, 2W, UNDIVIDED  |
| 701502-09 | URBAN LANE CLOSURE 2L, 2W, WITH BIDIRECTIONAL LEFT TURN LANE                     |
| 701601-09 | URBAN LANE CLOSURE, MULTILANE, 1W OR 2W WITH NONTRAVERSABLE MEDIAN               |
| 701602-10 | URBAN LANE CLOSURE, MULTILANE, 2W WITH BIDIRECTIONAL LEFT TURN LANE              |
| 701606-10 | URBAN LANE CLOSURE, MULTILANE, 2W WITH MOUNTABLE MEDIAN                          |
| 701701-10 | URBAN LANE CLOSURE, MULTILANE INTERSECTION                                       |
| 701801-06 | SIDEWALK, CORNER OR CROSSWALK CLOSURE  |
| 701901-10 | TRAFFIC CONTROL DEVICES  |
| 821101-03 | LUMINAIRE WIRING IN POLE   |
| 838001-01 | BREAKAWAY DEVICES  |
| 862001-01 | UNINTERRUPTABLE POWER SUPPLY (UPS)   |
| 873001-02 | TRAFFIC SIGNAL GROUNDING & BONDING   |
| 880006-01 | TRAFFIC SIGNAL MOUNTING DETAILS  |

**COMMITMENTS**

NONE

STATE OF ILLINOIS  
DEPARTMENT OF TRANSPORTATION  
DISTRICT THREE  
AS BUILT INFORMATION

\_\_\_\_\_  
SUPERVISING CONSTRUCTION FIELD ENGINEER

\_\_\_\_\_  
RESIDENT ENGINEER / TECHNICIAN

START & END DATES  
OF CONSTRUCTION:

INSPECTORS:

MODEL: D:\hull... FILE NAME: ... PROJECT: ...

|                          |             |           |
|--------------------------|-------------|-----------|
| USER NAME = Joseph.Zagar | DESIGNED -  | REVISED - |
| DRAWN -                  | REVISIONS - |           |
| PLOT SCALE = \$\$SCALE\$ | CHECKED -   | REVISED - |
| PLOT DATE = 10/10/2024   | DATE -      | REVISED - |

**STATE OF ILLINOIS  
DEPARTMENT OF TRANSPORTATION**

**GENERAL NOTES AND HIGHWAY STANDARDS  
IDOT DISTRICT 3 ELECTRICAL MAINTENANCE CONTRACT**

|                    |                           |                     |              |           |
|--------------------|---------------------------|---------------------|--------------|-----------|
| F.A. RTE.          | SECTION                   | COUNTY              | TOTAL SHEETS | SHEET NO. |
| VARIOUS            | D3 LIGHTING REPAIR 2025-2 | *                   | 5            | 2         |
| CONTRACT NO. 66P97 |                           |                     |              |           |
| SCALE:             |                           | SHEET 1 OF 1 SHEETS | STA.         | TO STA.   |

MODEL: Default  
 FILE NAME: P:\workspace\benf\com\PM\DOT\Documents\DOT Office\District 3\CRD Project\82110007\CRD\82110007\_500

| CONSTRUCTION CODE   |                     |                     |                     |
|---------------------|---------------------|---------------------|---------------------|
| STATE FUNDS<br>100% | STATE FUNDS<br>100% | STATE FUNDS<br>100% | STATE FUNDS<br>100% |
| ROADWAY<br>0021     | ROADWAY<br>0021     | ROADWAY<br>0021     | ROADWAY<br>0021     |
| BUREAU              | DEKALB              | KENDALL             | LASALLE             |

| CODE NO. | ITEM   | UNIT | TOTAL QUANTITY | BUREAU | DEKALB | KENDALL | LASALLE |
|----------|--|------|----------------|--------|--------|---------|---------|
| 82110007 | LUMINAIRE, LED, ROADWAY, OUTPUT DESIGNATION G                        | EACH | 52             | 20     | 6      | 6       | 20      |
| 82110008 | LUMINAIRE, LED, ROADWAY, OUTPUT DESIGNATION H                        | EACH | 38             | 15     | 4      | 4       | 15      |
| 82110014 | LUMINAIRE, LED, HIGHMAST, OUTPUT DESIGNATION G                       | EACH | 8              | 4      |        |         | 4       |
| 82110015 | LUMINAIRE, LED, HIGHMAST, OUTPUT DESIGNATION H                       | EACH | 6              | 3      |        |         | 3       |
| 83800205 | BREAKAWAY DEVICE, TRANSFORMER BASE, 15 INCH BOLT CIRCLE              | EACH | 8              | 2      | 2      | 2       | 2       |
| 83800650 | BREAKAWAY DEVICE, COUPLING WITH STAINLESS STEEL SCREEN               | EACH | 20             | 5      | 5      | 5       | 5       |
| 85000200 | MAINTENANCE OF EXISTING TRAFFIC SIGNAL INSTALLATION                  | EACH | 28             |        | 12     | 12      | 4       |
| 87502480 | TRAFFIC SIGNAL POST, GALVANIZED STEEL 14 FT.                         | EACH | 3              |        | 1      | 1       | 1       |
| 87502500 | TRAFFIC SIGNAL POST, GALVANIZED STEEL 16 FT.                         | EACH | 3              |        | 1      | 1       | 1       |
| 88040070 | SIGNAL HEAD, POLYCARBONATE, LED, 1-FACE, 3-SECTION, BRACKET MOUNTED  | EACH | 3              |        | 1      | 1       | 1       |
| 88040090 | SIGNAL HEAD, POLYCARBONATE, LED, 1-FACE, 3-SECTION, MAST ARM MOUNTED | EACH | 3              |        | 1      | 1       | 1       |
| 88040150 | SIGNAL HEAD, POLYCARBONATE, LED, 1-FACE, 5-SECTION, BRACKET MOUNTED  | EACH | 3              |        | 1      | 1       | 1       |
| 88040160 | SIGNAL HEAD, POLYCARBONATE, LED, 1-FACE, 5-SECTION, MAST ARM MOUNTED | EACH | 3              |        | 1      | 1       | 1       |
| 88200510 | TRAFFIC SIGNAL BACKPLATE, RETROREFLECTIVE                            | EACH | 3              |        | 1      | 1       | 1       |

|                          |            |           |
|--------------------------|------------|-----------|
| USER NAME = Joseph.Zagar | DESIGNED - | REVISED - |
| PLOT SCALE = \$\$SCALE\$ | DRAWN -    | REVISED - |
| PLOT DATE = 10/15/2024   | CHECKED -  | REVISED - |
|                          | DATE -     | REVISED - |

**STATE OF ILLINOIS**  
**DEPARTMENT OF TRANSPORTATION**

**SUMMARY OF QUANTITIES**  
**IDOT DISTRICT 3 ELECTRICAL MAINTENANCE CONTRACT**

|                           |                           |        |              |           |
|---------------------------|---------------------------|--------|--------------|-----------|
| F.A. RTE.                 | SECTION                   | COUNTY | TOTAL SHEETS | SHEET NO. |
| VARIOUS                   | D3 LIGHTING REPAIR 2025-2 | *      | 5            | 3         |
| CONTRACT NO. 66P97        |                           |        |              |           |
| ILLINOIS FED. AID PROJECT |                           |        |              |           |

SCALE: SHEET 1 OF 3 SHEETS STA. TO STA.

\* BUREAU, DEKALB, KENDALL & LASALLE

| CODE NO. | ITEM  | UNIT | TOTAL QUANTITY | CONSTRUCTION CODE |                  |                  |                  |
|----------|---|------|----------------|-------------------|------------------|------------------|------------------|
|          |   |      |                | STATE FUNDS 100%  | STATE FUNDS 100% | STATE FUNDS 100% | STATE FUNDS 100% |
|          |   |      |                | ROADWAY 0021      | ROADWAY 0021     | ROADWAY 0021     | ROADWAY 0021     |
|          |   |      |                | BUREAU            | DEKALB           | KENDALL          | LASALLE          |
| 89502610 | SIGNAL VISOR, TUNNEL TYPE, 12 INCH                                      | EACH | 3              |                   | 1                | 1                | 1                |
| X0327216 | CLOSED CIRCUIT TELEVISION CAMERA  | EACH | 1              |                   | 1                |                  |                  |
| X8000001 | MAINTAIN EXISTING HIGHWAY LIGHTING                                      | EACH | 265            | 37                | 7                | 13               | 208              |
| X8005020 | GFCI 20 AMP DUPLEX RECEPTACLE   | EACH | 7              |                   | 3                | 3                | 1                |
| X8350003 | MAINTENANCE OF EXISTING HIGH MAST LIGHT TOWERS                          | EACH | 123            | 36                |                  |                  | 87               |
| X8500110 | MAINTENANCE OF EXISTING FLASHING BEACON INSTALLATION                    | EACH | 66             | 12                | 22               | 12               | 20               |
| X8620310 | REMOVE AND REPLACE BATTERIES FOR UNINTERRUPTABLE POWER SUPPLY, EXTENDED | EACH | 2              |                   | 2                |                  |                  |
| XP000001 | JOURNEYMAN ELECTRICIAN  | HOUR | 2000           | 500               | 500              | 250              | 750              |
| XP000002 | APPRENTICE ELECTRICIAN  | HOUR | 750            | 125               | 250              | 125              | 250              |
| XP000003 | JOURNEYMAN ELECTRICIAN (WEEKLY OVERTIME RATE)                           | HOUR | 150            | 25                | 50               | 25               | 50               |
| XP000004 | JOURNEYMAN ELECTRICIAN (SATURDAY OVERTIME RATE)                         | HOUR | 150            | 25                | 50               | 25               | 50               |
| XP000005 | JOURNEYMAN ELECTRICIAN (SUNDAY AND HOLIDAY OVERTIME RATE)               | HOUR | 74             | 12                | 25               | 12               | 25               |
| XP000006 | APPRENTICE ELECTRICIAN (WEEKLY OVERTIME RATE)                           | HOUR | 150            | 25                | 50               | 25               | 50               |
| XP000007 | APPRENTICE ELECTRICIAN (SATURDAY OVERTIME RATE)                         | HOUR | 150            | 25                | 50               | 25               | 50               |

MODEL: Default  
 FILE NAME: P:\ids\p\c\h\m\com\PM\DOT\Documents\DOT Office\District 3\CRD Project\248897\CAD\248897\_500

|                          |            |           |
|--------------------------|------------|-----------|
| USER NAME = Joseph.Zagar | DESIGNED - | REVISED - |
| PLOT SCALE = \$SCALE\$   | DRAWN -    | REVISED - |
| PLOT DATE = 10/15/2024   | CHECKED -  | REVISED - |
|                          | DATE -     | REVISED - |

**STATE OF ILLINOIS**  
**DEPARTMENT OF TRANSPORTATION**

**SUMMARY OF QUANTITIES**  
**IDOT DISTRICT 3 ELECTRICAL MAINTENANCE CONTRACT**

|                           |                           |        |              |           |
|---------------------------|---------------------------|--------|--------------|-----------|
| F.A. RTE.                 | SECTION                   | COUNTY | TOTAL SHEETS | SHEET NO. |
| VARIOUS                   | D3 LIGHTING REPAIR 2025-2 | *      | 5            | 4         |
| CONTRACT NO. 66P97        |                           |        |              |           |
| ILLINOIS FED. AID PROJECT |                           |        |              |           |

SCALE: SHEET 2 OF 3 SHEETS STA. TO STA.

\* BUREAU, DEKALB, KENDALL & LASALLE

| CODE NO. | ITEM  | UNIT | TOTAL QUANTITY | CONSTRUCTION CODE |                  |                  |                  |
|----------|---|------|----------------|-------------------|------------------|------------------|------------------|
|          |   |      |                | STATE FUNDS 100%  | STATE FUNDS 100% | STATE FUNDS 100% | STATE FUNDS 100% |
|          |   |      |                | ROADWAY 0021      | ROADWAY 0021     | ROADWAY 0021     | ROADWAY 0021     |
|          |   |      |                | BUREAU            | DEKALB           | KENDALL          | LASALLE          |
| XP000008 | APPRENTICE ELECTRICIAN (SUNDAY AND HOLIDAY OVERTIME RATE) | HOUR | 74             | 12                | 25               | 12               | 25               |
| XP000009 | PICK-UP TRUCK   | HOUR | 1587           | 311               | 500              | 526              | 250              |
| XP000010 | BUCKET TRUCK (LENGTH LESS THAN 35 FEET)                   | HOUR | 874            | 37                | 400              | 237              | 200              |
| XP000011 | BUCKET TRUCK (LENGTH 35 TO 65 FEET)                       | HOUR | 350            | 75                | 100              | 125              | 50               |
| XP000015 | DIGGER DERRICK  | HOUR | 16             | 4                 | 4                | 4                | 4                |
| XP000103 | KTQ 5A FUSE   | EACH | 40             | 15                | 5                | 5                | 15               |
| XP000106 | BUCHANAN FUSEHOLDER KIT                                   | EACH | 16             | 6                 | 2                | 2                | 6                |
| XP000188 | HANDHOLE, COVER ONLY (NEENAH R-6660-JP)                   | EACH | 3              |                   | 1                | 1                | 1                |
| XP000200 | LOAD SWITCH, NEMA   | EACH | 24             |                   | 12               | 8                | 4                |
| Z0025615 | FURNISH AND INSTALL METAL SCREEN                          | EACH | 40             | 10                | 10               | 10               | 10               |
| Z0033068 | TRAFFIC SIGNAL BATTERY BACKUP SYSTEM                      | EACH | 3              |                   | 1                | 1                | 1                |

MODEL: D:\hull...  
 FILE NAME: P:\Users\p\...  
 PROJECT: IDOT District 3 CRD Project\...

|                          |            |           |
|--------------------------|------------|-----------|
| USER NAME = Joseph.Zagar | DESIGNED - | REVISED - |
| PLOT SCALE = \$\$SCALE\$ | DRAWN -    | REVISED - |
| PLOT DATE = 10/15/2024   | CHECKED -  | REVISED - |
|                          | DATE -     | REVISED - |

**STATE OF ILLINOIS**  
**DEPARTMENT OF TRANSPORTATION**

**SUMMARY OF QUANTITIES**  
**IDOT DISTRICT 3 ELECTRICAL MAINTENANCE CONTRACT**

|                           |                           |        |              |           |
|---------------------------|---------------------------|--------|--------------|-----------|
| F.A. RTE.                 | SECTION                   | COUNTY | TOTAL SHEETS | SHEET NO. |
| VARIOUS                   | D3 LIGHTING REPAIR 2025-2 | *      | 5            | 5         |
| CONTRACT NO. 66P97        |                           |        |              |           |
| ILLINOIS FED. AID PROJECT |                           |        |              |           |

SCALE: SHEET 3 OF 3 SHEETS STA. TO STA.

\* BUREAU, DEKALB, KENDALL & LASALLE