

STATE OF ILLINOIS
DEPARTMENT OF TRANSPORTATION

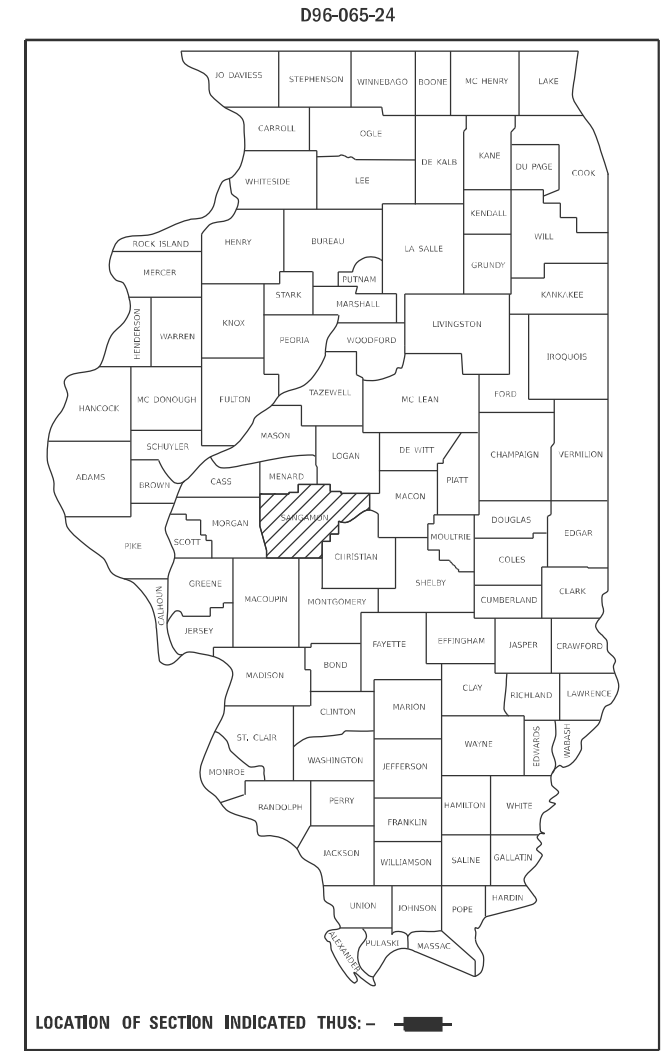
F.A.I. RTE.	SECTION	COUNTY	TOTAL SHEETS	SHEET NO.
55, 72	D6 PATCHING 2025-1	SANGAMON	9	1
		ILLINOIS	CONTRACT NO. 72515	

FOR INDEX OF SHEETS, SEE SHEET NO. 2

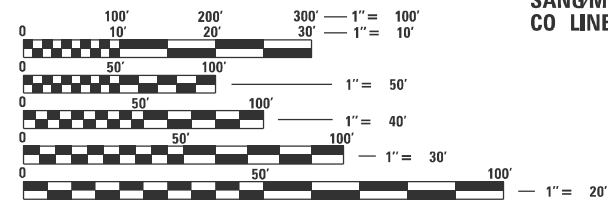
PROPOSED HIGHWAY PLANS

FAI ROUTE 55, 72 (I 55, 72)
SECTION D6 PATCHING 2025-1
PROJECT
PAVEMENT PATCHING
SANGAMON COUNTY

C-96-087-24



ADT = 26,500 (2023)
SU = 1,050 (2023)
MU = 5,600 (2023)

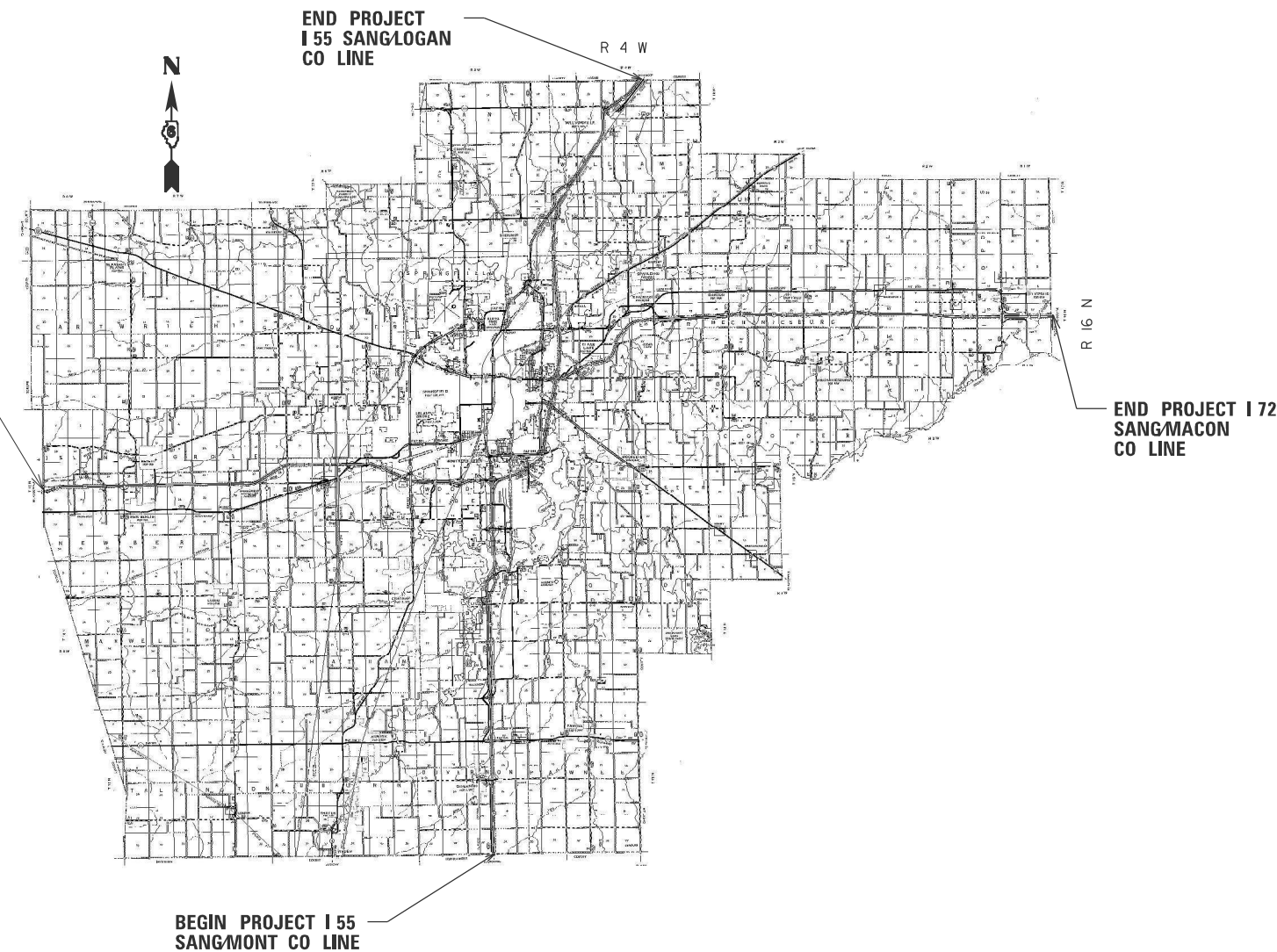


FULL SIZE PLANS HAVE BEEN PREPARED USING STANDARD ENGINEERING SCALES, REDUCED SIZED PLANS WILL NOT CONFORM TO STANDARD SCALES. IN MAKING MEASUREMENTS ON REDUCED PLANS, THE ABOVE SCALES MAY BE USED.

J.U.L.I.E.
JOINT UTILITY LOCATION INFORMATION FOR EXCAVATORS
1-800-892-0123
OR 811

PROJECT ENGINEER: MIKE HAMBY (217)524-7765
PROJECT MANAGER TIM SHARP (217)524-9160

CONTRACT NO. 72515



STATE OF ILLINOIS
DEPARTMENT OF TRANSPORTATION

SUBMITTED October 21 2024

John P. Meyer
REGIONAL ENGINEER

December 6, 2024
Scott A. Etk
ENGINEER OF DESIGN AND ENVIRONMENT

December 6, 2024
James J. Quinn
DIRECTOR OF HIGHWAYS PROJECT IMPLEMENTATION 13

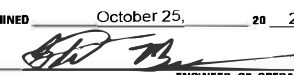
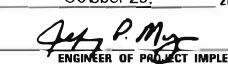
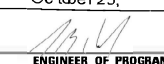
PRINTED BY THE AUTHORITY
OF THE STATE OF ILLINOIS

INDEX OF SHEETS

SHEET NO.	DESCRIPTION
1.	COVER SHEET
2.	INDEX OF SHEETS, STANDARDS, GENERAL NOTES & SIGNATURE
3.	SUMMARY OF QUANTITIES
4-5.	PATCHING SCHEDULES
6.	PROJECT LOCATION MAP
7-9.	PROJECT TYPICAL SECTIONS

STANDARDS

STANDARD NO.	DESCRIPTION
000001-08	STANDARD SYMBOLS, ABBREVIATIONS AND PATTERNS
001006	DECIMAL OF AN INCH AND OF A FOOT
420001-10	PAVEMENT JOINTS
442001-04	CLASS A PATCHES
442101-09	CLASS B PATCHES
701101-05	OFF-RD OPERATIONS, MULTILANE, 15' TO 24" FROM EDGE OF PAVEMENT
701106-02	OFF-RD OPERATIONS, MULTILANE, MORE THAN 15" AWAY
701400-12	APPROACH TO LANE CLOSURE, FREEWAY/EXPRESSWAY
701401-13	LANE CLOSURE, FREEWAY/EXPRESSWAY
701411-09	LANE CLOSURE, MULTILANE AT ENTRANCE OR EXIT RAMP FOR SPEEDS \geq 45 MPH
701446-11	TWO LANE CLOSURE, FREEWAY/EXPRESSWAY
701901-10	TRAFFIC CONTROL DEVICES

STATE OF ILLINOIS DEPARTMENT OF TRANSPORTATION DIVISION OF HIGHWAYS DISTRICT 6	
EXAMINED	October 25, 2024
 ENGINEER OF OPERATIONS	
EXAMINED	October 25, 2024
 ENGINEER OF PROJECT IMPLEMENTATION	
EXAMINED	October 25, 2024
 ENGINEER OF PROGRAM DEVELOPMENT	

REV - MS

FILE NAME =	USER NAME = Timothy.Sharp	DESIGNED -	REVISED -	STATE OF ILLINOIS DEPARTMENT OF TRANSPORTATION	INDEX OF SHEETS, STANDARDS GENERAL NOTES, SIGNATURES	F.A.I. RTE:	SECTION	COUNTY	TOTAL SHEETS	SHEET NO.
pxt://idot-pw.bentley.com/PWIDOT/Document/1/IDOT Offices/District 6/ORD Projects/D67251/ORD Projects/D67251-1/ORD Projects/D67251-1-sht-2-genn	DESIGNED -	REVISED -	55, 72			D6 PATCHING 2025-1	SANGAMON	9	2	
PLOT SCALE = #SCALE#	CHECKED -	REVISED -	CONTRACT NO. 72515							
Default	PLOT DATE = 10/21/2024	DATE	REVIS			SCALE:	SHEET OF SHEETS	STA. TO STA.	ILLINOIS FED. AID PROJECT	

0-02179-6023
 100% STATE
 SANGAMON
 ROADWAY
 0006
 URBAN

CODE NO.	ITEM	UNIT	TOTAL QUANTITY	
44200050	WELDED WIRE REINFORCEMENT	SQ YD	32	32
44200610	CLASS A PATCHES, TYPE II, 13 INCH	SQ YD	303	303
44200612	CLASS A PATCHES, TYPE III, 13 INCH	SQ YD	96	96
44200614	CLASS A PATCHES, TYPE IV, 13 INCH	SQ YD	190	190
44200620	CLASS A PATCHES, TYPE II, 14 INCH	SQ YD	141	141
44200628	CLASS A PATCHES, TYPE IV, 14 INCH	SQ YD	80	80
44201043	CLASS B PATCHES, TYPE II, 16 INCH	SQ YD	256	256
44201047	CLASS B PATCHES, TYPE III, 16 INCH	SQ YD	32	32
44201299	DOWEL BARS 1 1/2"	EACH	580	580
44213000	PATCHING REINFORCEMENT	SQ YD	810	810
44213200	SAW CUTS	FOOT	5,716	5,716
44213204	TIE BARS 3/4"	EACH	105	105
67100100	MOBILIZATION	L SUM	1	1
70100420	TRAFFIC CONTROL AND PROTECTION, STANDARD 701411	EACH	21	21
70100800	TRAFFIC OCONTROL AND PROTECTION, STANDARD 701401	L SUM	1	1
70100815	TRAFFIC OCONTROL AND PROTECTION, STANDARD 701446	L SUM	1	1
70107025	CHANGEABLE MESSAGE SIGN	CAL DAY	60	60
70200100	NIGHTTIME WORK ZONE LIGHTING	L SUM	1	1

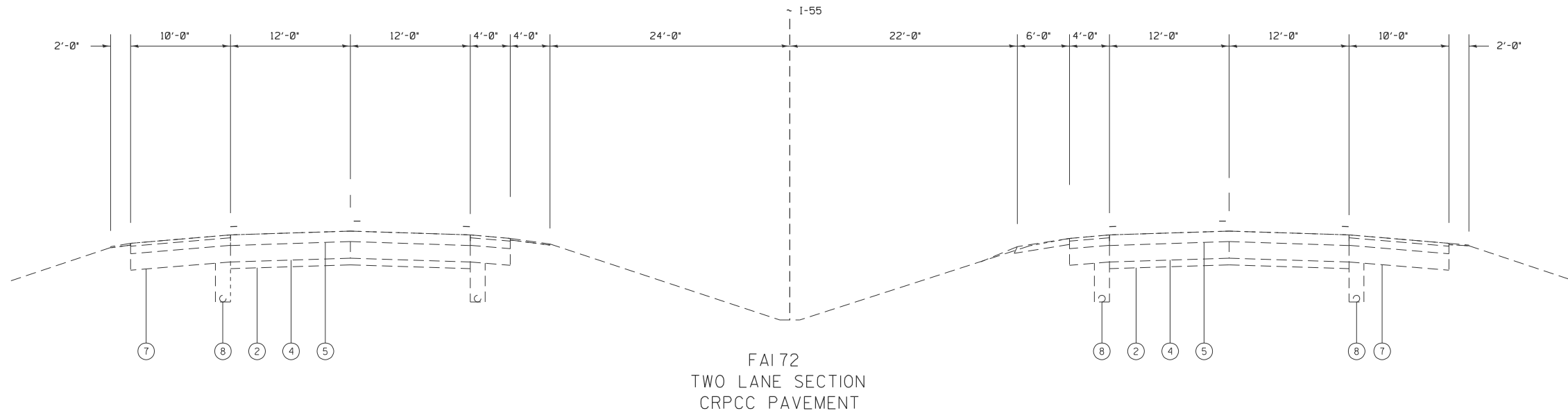
MODEL: D:\dbs\...
 FILE NAME: P:\11111111\Documents\DOT_0_esi\District_6\ORD Project\02179\15\CAADD\03\03\Sheet\72515-00-3-500.dgn

REV - MS

USER NAME = Timothy.Sharp PLOT SCALE = \$SCALE\$ PLOT DATE = 10/21/2024	DESIGNED - DRAWN - CHECKED - DATE -	REVISED - REVISED - REVISED - REVISED -	STATE OF ILLINOIS DEPARTMENT OF TRANSPORTATION	SUMMARY OF QUANTITIES SCALE: SHEET OF SHEETS STA. TO STA.	<table border="1"> <tr> <th>F.A.I. RTE.</th> <th>SECTION</th> <th>COUNTY</th> <th>TOTAL SHEETS</th> <th>SHEET NO.</th> </tr> <tr> <td>55, 72</td> <td>D6 PATCHING 2025-1</td> <td>SANGAMON</td> <td>9</td> <td>3</td> </tr> </table>	F.A.I. RTE.	SECTION	COUNTY	TOTAL SHEETS	SHEET NO.	55, 72	D6 PATCHING 2025-1	SANGAMON	9	3
F.A.I. RTE.	SECTION	COUNTY	TOTAL SHEETS	SHEET NO.											
55, 72	D6 PATCHING 2025-1	SANGAMON	9	3											
				ILLINOIS FED. AID PROJECT CONTRACT NO. 72515											

MILE	LANE	LENGTH	WIDTH	AREA	CLASS A, 13 INCH			CLASS B, 16 INCH	CLASS B, 16 INCH	SAW CUTS	TIE BARS	DOWEL BARS	PATCHING	WELED WIRE
					TY II	TY III	TY IV	TY II	TY III					
MARKER	DL/ML/PL	(FT)	(FT)	(S.Y.)	(S.Y.)	(S.Y.)	(S.Y.)	(S.Y.)		44213200	44213204	44201299	44213000	44200050
I-55 NORTHBOUND - SANGAMON COUNTY														
76.9	SANGAMON/MONTGOMERY COUNTY LINE													
89.2	SN 084-0500 LAKE SPRINGFIELD BRIDGE													
89.6	CROSSOVER													
89.6	DL	6	12	8.0	--	--	--	8.0	--	48.0	--	20.0	--	--
90.4	TORONTO ROAD OVERHEAD													
90.7	PL	6	12	8.0	--	--	--	8.0	--	48.0	--	20.0	--	--
91.3	SOUTHWIND ROAD OVERHEAD													
91.5	CROSSOVER													
92.5	ELEVENTH STREET OVERHEAD													
92.7	DL	8	12	10.7	--	--	--	10.7	--	52.0	--	20.0	--	--
92.8	RAILROAD OVERHEAD													
93.2	DL	8	12	10.7	--	--	--	10.7	--	52.0	--	20.0	--	--
93.4	CROSSOVER													
93.6	WEST LAKE DRIVE OVERHEAD													
94.4	CWLP OVERHEAD													
94.5	STEVENS ON DRIVE OVERHEAD													
94.9	PL	6	12	8.0	--	--	--	8.0	--	48.0	--	20.0	--	--
95.8	PL	10	12	13.3	--	--	--	13.3	--	56.0	--	20.0	--	--
96.1	SN 084-0211 OVER LOST BRIDGE TRAIL													
96.6	SOUTH GRAND AVE OVERHEAD													
96.9	COOK ST OVERHEAD													
97.4	DL	6	12	8.0	--	--	--	8.0	--	48.0	--	20.0	--	--
97.4	PL	6	12	8.0	--	--	--	8.0	--	48.0	--	20.0	--	--
97.5	I-72/CLEAR LAKE AVE. OVERHEADS													
97.5	DL	6	12	8.0	--	--	--	8.0	--	48.0	--	20.0	--	--
97.5	PL	6	12	8.0	--	--	--	8.0	--	48.0	--	20.0	--	--
97.7	DL	6	12	8.0	--	--	--	8.0	--	48.0	--	20.0	--	--
97.7	PL	6	12	8.0	--	--	--	8.0	--	48.0	--	20.0	--	--
98.3	DL	12	12	16.0	--	--	--	--	16.0	60.0	--	20.0	--	16.0
98.3	PL	10	12	13.3	--	--	--	13.3	--	56.0	--	20.0	--	--
99.1	RIDGLEY AVENUE OVERHEAD													
99.3	RAILROAD OVERHEAD													
99.6	EXIT 100 (IL 54/SANGAMON AVE.)													
100.7	BISSELL ROAD OVERHEAD													
102.4	SN 084-0018 (SANGAMON RIVER)													
104.3	CROSSOVER													
105.3	SUDDUTH ROAD OVERHEAD													
105.6	STRUCTURE OVER FANCY CREEK													
106.0	BEGIN 3 LANES													
106.2	CROSSOVER													
106.5	DL	8	6	5.3	5.3	--	--	--	--	40.0	--	--	5.3	--
106.5	DL	10	6	6.7	6.7	--	--	--	--	44.0	--	--	6.7	--
106.5	DL	45	6	30.0	--	--	30.0	--	--	114.0	14	--	30.0	--
106.6	DL	10	6	6.7	6.7	--	--	--	--	44.0	--	--	6.7	--
106.6	DL	30	6	20.0	--	20.0	--	--	--	84.0	9	--	20.0	--
106.7	DL	10	6	6.7	6.7	--	--	--	--	44.0	--	--	6.7	--
106.8	DL	10	6	6.7	6.7	--	--	--	--	44.0	--	--	6.7	--
106.9	DL	10	6	6.7	6.7	--	--	--	--	44.0	--	--	6.7	--
107.1	DL	30	6	20.0	--	20.0	--	--	--	84.0	9	--	20.0	--
107.3	DL	8	6	5.3	5.3	--	--	--	--	40.0	--	--	5.3	--
107.3	DL	10	6	6.7	6.7	--	--	--	--	44.0	--	--	6.7	--
107.4	DL	10	6	6.7	6.7	--	--	--	--	44.0	--	--	6.7	--
107.4	DL	10	6	6.7	6.7	--	--	--	--	44.0	--	--	6.7	--
107.5	DL	10	6	6.7	6.7	--	--	--	--	44.0	--	--	6.7	--
107.6	DL	20	6	13.3	13.3	--	--	--	--	64.0	--	--	13.3	--
107.6	DL	12	6	8.0	8.0	--	--	--	--	48.0	--	--	8.0	--
107.7	DL	45	6	30.0	--	--	30.0	--	--	114.0	14	--	30.0	--
107.7	DL	30	6	20.0	--	20.0	--	--	--	84.0	9	--	20.0	--
107.7	DL	15	6	10.0	10.0	--	--	--	--	54.0	--	--	10.0	--
107.8	DL	8	6	5.3	5.3	--	--	--	--	40.0	--	--	5.3	--
107.8	CROSSOVER													
108.0	DL	10	12	13.3	13.3	--	--	--	--	68.0	--	--	13.3	--
108.0	DL	15	12	20.0	--	20.0	--	--	--	78.0	--	--	20.0	--
108.0	DL	6	12	8.0	8.0	--	--	--	--	60.0	--	--	8.0	--
109.2	SN 084-0171 (IL 123/WILLIAMSVILLE)													
109.2	DL	70	6	46.7	--	--	46.7	--	--	164.0	23	--	46.7	--
109.2	DL	6	12	8.0	8.0	--	--	--	--	60.0	--	--	8.0	--
109.5	DL	6	12	8.0	8.0	--	--	--	--	60.0	--	--	8.0	--
110.9	CROSSOVER													
111.0	LOGAN - SANGAMON COUNTY LINE													
I-55 NORTHBOUND TOTALS:					144.7	80.0	106.7	120.0	16.0	2360.0	78	280.0	331.3	16.0

MILE	LANE	LENGTH	WIDTH	AREA	CLASS A, 13 INCH			CLASS B, 16 INCH	CLASS B, 16 INCH	SAW CUTS	TIE BARS	DOWEL BARS	PATCHING	WELED WIRE
					TY II	TY III	TY IV	TY II	TY III					
MARKER	DL/ML/PL	(FT)	(FT)	(S.Y.)	(S.Y.)	(S.Y.)	(S.Y.)	(S.Y.)		44213200	44213204	44201299	44213000	44200050
I-55 SOUTHBOUND -- SANGAMON COUNTY														
111.0	LOGAN - SANGAMON COUNTY LINE													
110.9	CROSSOVER													
110.5	DL	8	12	10.7	10.7	--	--	--	--	64.0	--	--	10.7	--
110.4	ML	8	6	5.3	5.3	--	--	--	--	40.0	--	--	5.3	--
110.3	DL	12	12	16.0	--	16.0	--	--	--	72.0	--	--	16.0	--
110.2	DL	8	6	5.3	5.3	--	--	--	--	40.0	--	--	5.3	--
110.1	DL	40	6	26.7	--	--	26.7	--	--	104.0	13	--	26.7	--
109.7	ML	10	12	13.3	13.3	--	--	--	--	68.0	--	--	13.3	--
109.4	ML	15	6	10.0	10.0	--	--	--	--	54.0	--	--	10.0	--
109.3	SN 084-0171 (IL 123/WILLIAMSVILLE)													
109.2	DL	10	6	6.7	6.7	--	--	--	--	44.0	--	--	6.7	--
109.1	DL	20	12	26.7	--	--	26.7	--	--	88.0	--	--	26.7	--
108.7	DL	15	6	10.0	10.0	--	--	--	--	54.0	--	--	10.0	--
108.6	DL	12	6	8.0	8.0	--	--	--	--	48.0	--	--	8.0	--
108.5	DL	6	12	8.0	8.0	--	--	--	--	60.0	--	--	8.0	--
108.3	DL	8	6	5.3	5.3	--	--	--	--	40.0	--	--	5.3	--
108.2	DL	6	12	8.0	8.0	--	--	--	--	60.0	--	--	8.0	--
108.1	DL	8	6	5.3	5.3	--	--	--	--	40.0	--	--	5.3	--
107.9	CROSSOVER													
107.8	DL	20	6	13.3	13.3	--	--	--	--	64.0	--	--	13.3	--
107.7	DL	45	6	30.0	--	--	30.0	--	--	114.0	14	--	30.0	--
107.6	DL	12	6	8.0	8.0	--	--	--	--	48.0	--	--	8.0	--
107.2	DL	8	6	5.3	5.3	--	--	--	--	40.0	--	--	5.3	--
106.9	DL	8	6	5.3	5.3	--	--	--	--	40.0	--	--	5.3	--
106.8	DL	20	6	13.3	13.3	--	--	--	--	64.0	--	--	13.3	--
106.3	DL	10	6	6.7	6.7	--	--	--	--	44.0	--	--	6.7	--
106.2	DL	15	6	10.0	10.0	--	--	--	--	54.0	--	--	10.0	--
106.2	CROSSOVER													
105.8	STRUCTURE 084-0023 (FANCY CREEK)													
105.3	SUDDUTH ROAD OVERHEAD													
104.7	EXIT 105 (BUS. 55/SHERMAN)													
104.2	CROSSOVER													
104.0	ANDREW ROAD (CH 1) OVERHEAD													
103.4	REST AREA													
103.1	END 3 LANES													
102.5	SN 084-0018 (SANGAMON RIVER)													
101.9	DL	6	12	8.0	--	--	--	8.0	--	48.0	--	20.0	--	--
101.8	DL	6	12	8.0	--	--	--	8.0	--	48.0	--	20.0	--	--
101.7	DL	6	12	8.0	--	--	--	8.0	--	48.0	--	20.0	--	--
101.6	PL	10	12	13.3	--	--	--	13.3	--	56.0	--	20.0	--	--
101.3	CROSSOVER													
101.0	DL	6	12	8.0	--	--	--	8.0	--	48.0	--	20.0	--	--
100.6	BISSELL ROAD OVERHEAD													
100.5	PL	8	12	10.7	--	--	--	10.7	--	52.0	--	20.0	--	--
100.4	PL	10	12	13.3	--	--	--	13.3	--	56.0	--	20.0	--	--
100.2	DL	6	12	8.0	--	--	--	8.0	--	48.0	--	20.0	--	--
99.9	STRUCTURE OVER RAILROAD													
99.6	EXIT 100 (IL 54/SANGAMON AVE.)													
99.3	RAILROAD OVERHEAD													
99.2	SN 084-0102 (RIDGLEY ROAD OVERHEAD)													
97.7	SN 084-0051 (EB CLEAR LAKE/I-72)													
97.7	SN 084-0050 (WB CLEAR LAKE/I-72)													
97.5	PL	8	12	10.7	--	--	--	10.7	--	52.0	--	20.0	--	--
97.5	PL	8	12	10.7	--	--	--	10.7	--	52.0	--	20.0	--	--
97.0	SN 084-0103 (COOK ST OVERHEAD)													
96.9	DL	12	12	16.0	--	--	--	--	16.0	60.0	--	20.0	--	16.0
96.9	PL	10	12	13.3	--	--	--	13.3	--	56.0	--	20.0	--	--
96.7	DL	6	12	8.0	--	--	--	8.0	--	48.0	--	20.0	--	--
96.6	SOUTH GRAND AVE OVERHEAD													
94.5	OVERHEAD STRUCTURE (EB STEVENSON)													
94.5	OVERHEAD STRUCTURE (WB STEVENSON)													
91.2	OVERHEAD STRUCTURE (SOUTHWIND ROAD)													
90.9	DL	6	12	8.0	--	--	--							



LEGEND

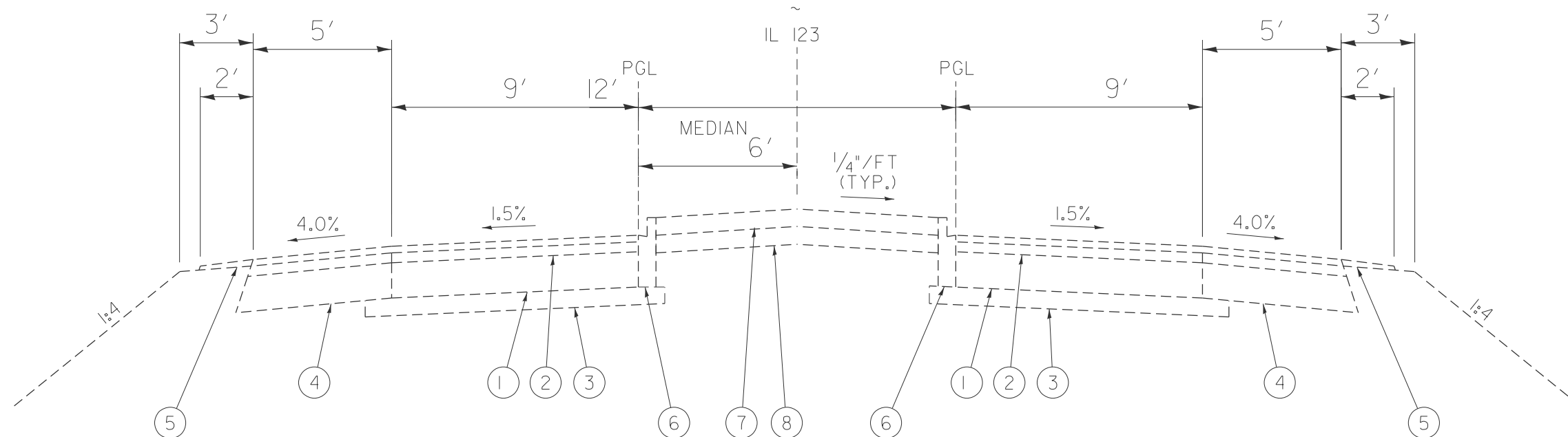
- ① EX STABILIZED SUB-BASE 4"
- ② EX AGGREGATE SUB-BASE 4"
- ③ EX PCC PAVEMENT 10"
- ④ EX CRPCC PAVEMENT
- ⑤ EX HOT -MIX ASPHALT SURFACE COURSE (VARIABLE THICKNESS)
- ⑥ EX AGGREGAE SHOULDERS
- ⑦ EX HOT-MIX ASPHALT SHOULDERS
- ⑧ EX PIPE UNDERDRAIN

FILE NAME =	USER NAME = Timothy.Sharp	DESIGNED -	REVISED -
p:\1\dot-pw.bentley.com\PI\DOT\Documents\IDOT Offices\District 6\ORD Projects\0672515\0672515-1\CADsheets\72515-sht-7-9-typicals		DRAWN -	REVISED -
Default	PLOT SCALE = #SCALE#	CHECKED -	REVISED -
	PLOT DATE = 10/4/2024	DATE -	REVISED -

**STATE OF ILLINOIS
DEPARTMENT OF TRANSPORTATION**

TYPICALS			
SCALE:	SHEET	OF	SHEETS
	STA.	TO	STA.

F.A.I. RTE.	SECTION	COUNTY	TOTAL SHEETS	SHEET NO.
55, 72	D6 PATCHIN52024-I	SANGAMON	9	8
CONTRACT NO. 72515				
ILLINOIS FED. AID PROJECT				



LEGEND

- ① EXISTING JRCP PAVEMENT 8"
- ② EXISTING BITUMINOUS CONCRETE
- ③ EXISTING STABILIZED SUBBASE, 4"
- ④ EXISTING BITUMINOUS SHOULDER, 10 1/2"
- ⑤ EXIST. AGGREGATE SHOULDERS, TYPE B
- ⑥ EXIST. COMBINATION CONCRETE CURB AND GUTTER, TYPE M-6.06
- ⑦ EXIST. CONCRETE MEDIAN SURFACE, 4"
- ⑧ EXIST. SAND BACKFILL, 4"

STA. 46+49.75 TO 56+91.83
 NOTE: BRIDGE OMISSION
 STA. 48+67.02 TO STA. 51+41.22

FILE NAME =	USER NAME = Timothy.Sharp	DESIGNED -	REVISED -	STATE OF ILLINOIS DEPARTMENT OF TRANSPORTATION	TYPICALS		F.A.I. RTE.	SECTION	COUNTY	TOTAL SHEETS	SHEET NO.				
pw://idot-pw.bentley.com/PWIDOT/Documents/IDOT Offices/District 6/ORD Projects/D672515/Drawings/CADsheets/72515-sht-7-9-typical	DRAWN	REVISED	SCALE:				SHEET	OF	SHEETS	STA.	TO	STA.	55,72	D6 PATCHING 2025-1	SANGAMON
Default	PLOT SCALE = #SCALE#	CHECKED -	REVISED -		CONTRACT NO. 72515										
	PLOT DATE = 10/4/2024	DATE -	REVISED -		ILLINOIS FED. AID PROJECT										