

STATE OF ILLINOIS
DEPARTMENT OF TRANSPORTATION

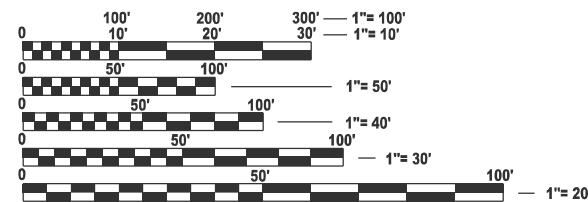
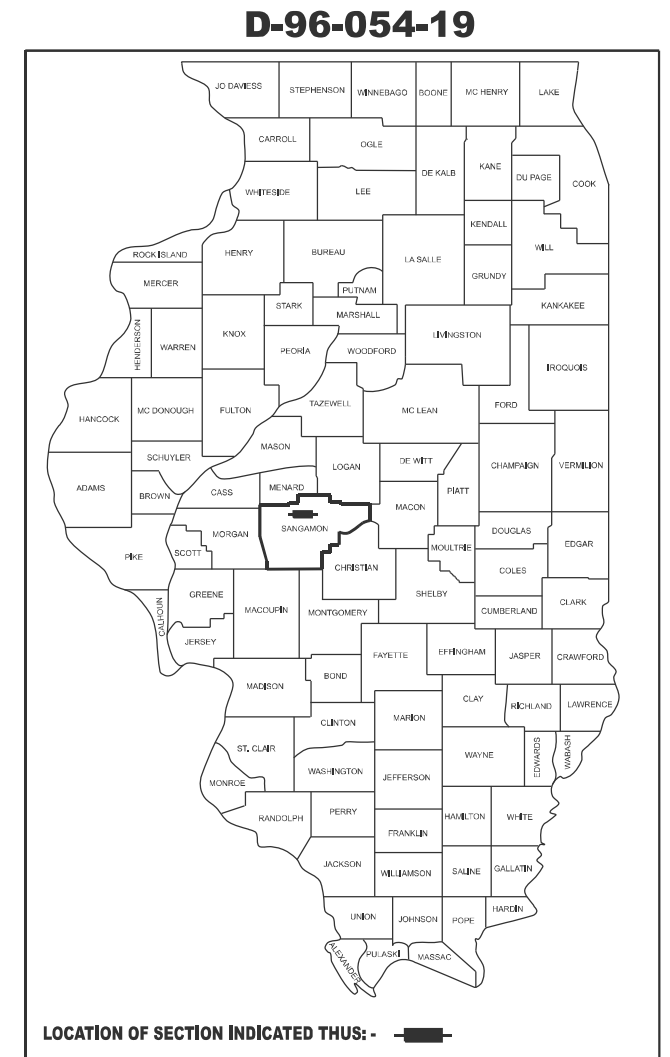
F.A.U. RTE.	SECTION	COUNTY	TOTAL SHEETS	SHEET NO.
8086	(O-15d)RS-3; 10RS-1	SANGAMON	20	1
		ILLINOIS	CONTRACT NO. 72L31	

FOR INDEX OF SHEETS, SEE SHEET NO. 2

PROPOSED HIGHWAY PLANS

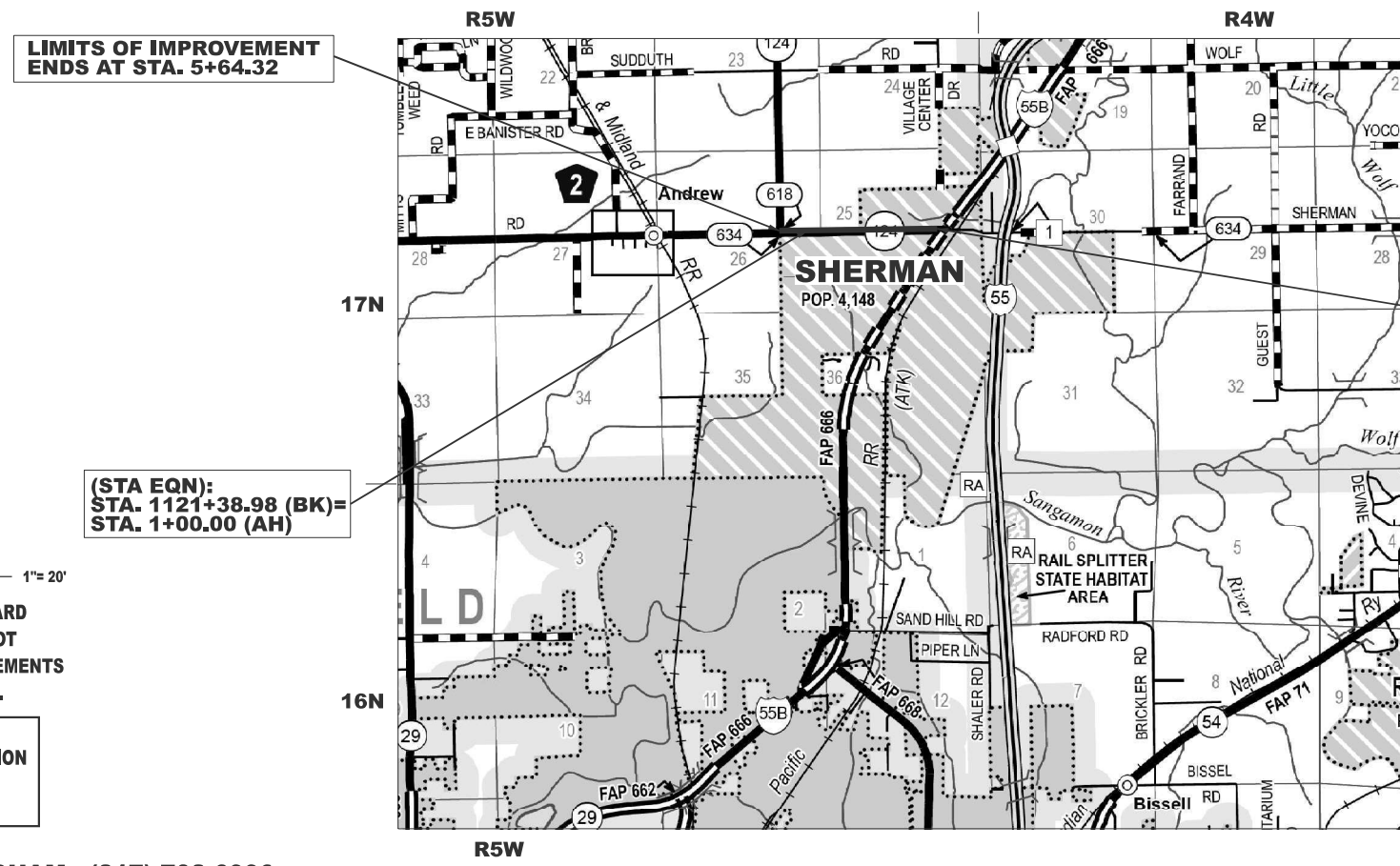
HIGHWAY CLASSIFICATION
 FAU 8086 (IL 124)
CLASSIFICATION: MINOR ARTERIAL
 DESIGN SPEED 45 & 50 MPH
 POSTED SPEED 40 & 45 MPH
 ADT: 3,921 (2023)
 PV= 95.21%
 MU= 2.54%
 SU= 2.25%

FAU ROUTE 8086 (IL 124)
SECTION (O-15d)RS-3; 10RS-1
PROJECT STP-V4KN(240)
FOG SEAL, SMART OVERLAY
SANGAMON COUNTY
C-96-067-19



FULL SIZE PLANS HAVE BEEN PREPARED USING STANDARD ENGINEERING SCALES. REDUCED SIZED PLANS WILL NOT CONFORM TO STANDARD SCALES. IN MAKING MEASUREMENTS ON REDUCED PLANS, THE ABOVE SCALES MAY BE USED.

J.U.L.I.E.
 JOINT UTILITY LOCATION INFORMATION FOR EXCAVATION
 1-800-892-0123
 OR 811



LIMITS OF IMPROVEMENT ENDS AT STA. 5+64.32

(STA EQN):
 STA. 1121+38.98 (BK)=
 STA. 1+00.00 (AH)

LIMITS OF IMPROVEMENT BEGINS STA. 1072+96.92

PROJECT ENGINEER: BRIAN LANINGHAM (217) 782-6990
PROJECT MANAGER: RENE CABRERA (217) 558-5140
ENGINEERING TECHNICIAN: JACOB DRAINER (217) 524-8915
SQUAD ENGINEER: MICHAEL CROW (217) 524-0236
CONTRACT NO. 72L31

GROSS LENGTH = 5,547.88 FT = 1.05 MI
 NET LENGTH = 5,547.88 FT = 1.05 MI

STATE OF ILLINOIS
 DEPARTMENT OF TRANSPORTATION

SUBMITTED October 7 2024

John P. Meyer
 REGIONAL ENGINEER

December 6, 2024
Scott A. Etk
 ENGINEER OF DESIGN AND ENVIRONMENT

December 6, 2024
James J. ...
 DIRECTOR OF HIGHWAYS PROJECT IMPLEMENTATION 13

**PRINTED BY THE AUTHORITY
 OF THE STATE OF ILLINOIS**

INDEX OF SHEETS

SHEET NO.	SHEET DESCRIPTION
1	COVER SHEET
2	GENERAL NOTES
3-4	SUMMARY OF QUANTITIES
5-7	SCHEDULES
8	TYPICAL SECTIONS
9-14	PLAN SHEETS
15-20	PAVEMENT MARKINGS DETAILS

GENERAL NOTES

- ALL ELEVATIONS SHOWN ON THE PLANS ARE ESTABLISHED FROM NAVD-88.
- THE DISTRICT BUREAU OF OPERATIONS SHALL BE NOTIFIED AT LEAST 14 DAYS PRIOR TO PLACEMENT OF FINAL PAVEMENT MARKING. PHONE (217) 785-5306.
- THE DISTRICT BUREAU OF OPERATIONS SHALL BE NOTIFIED THREE WEEKS PRIOR TO IMPLEMENTING ANY TRAFFIC CONTROL. PHONE (217) 785-5306.

MIX TABLE

Mixture Use:	Poly HMA Surface Course
PG:	SBS PG 64-28
Design Air Voids:	4.0% @ N50
Mixture Composition:	IL-9.5
Friction Aggregate:	Mix "C"
Mixture Weight:	112 lb/sy*in
Quality Management:	QC/QA
Sublot Size:	N/A
MTD Required:	No

COMMITMENTS

(NONE)

HIGHWAY STANDARDS

NUMBER	DESCRIPTION
000001-08	STANDARD SYMBOLS, ABBREVIATIONS AND PATTERNS
001006	DECIMAL OF AN INCH AND OF A FOOT
701001-02	OFF-RD OPERATIONS 2L 2W MORE THAN 15' AWAY FROM PAVEMENT
701006-05	OFF-RD OPERATIONS 2L 2W 15' TO 24" FROM PAVEMENT EDGE
701501-06	URBAN LANE CLOSURE, 2L 2W, UNDIVIDED
701901-10	TRAFFIC CONTROL DEVICE
780001-05	TYPICAL PAVEMENT MARKINGS
781001-04	TYPICAL APPLICATIONS RAISED REFLECTIVE PAVEMENT MARKERS
701301-04	LANE CLOSURE, 2L, 2W, SHORT TIME OPERATIONS
701311-03	LANE CLOSURE, 2L, 2W, MOVING OPERATIONS - DAY ONLY

APPLICATION RATES

THE FOLLOWING RATES OF APPLICATION WERE UTILIZED TO CALCULATE QUANTITIES

HMA SURFACE:	.056 TON/(SQ YD*IN)
BITUMINOUS MATERIALS (TACK COAT):	.05 LBS/SQ FT (MILLED SURFACE)
BITUMINOUS MATERIALS (FOG SEAL):	.08 LBS/SQ FT (FOR SHLDRS)

**STATE OF ILLINOIS
DEPARTMENT OF TRANSPORTATION
DIVISION OF HIGHWAYS
DISTRICT 6**

EXAMINED September 10, 20 24

[Signature]
ENGINEER OF OPERATIONS

EXAMINED September 16, 20 24

[Signature]
ENGINEER OF PROJECT IMPLEMENTATION

EXAMINED September 16, 20 24

[Signature]
ENGINEER OF PROGRAM DEVELOPMENT

REV - MS

**STATE OF ILLINOIS
DEPARTMENT OF TRANSPORTATION**

**INDEX OF SHEETS &
GENERAL NOTES**

SCALE: NTS SHEET 1 OF 1 SHEETS STA. TO STA.

F.A.U. RTE.	SECTION	COUNTY	TOTAL SHEETS	SHEET NO.
8086	(O-15d)RS-3; 10RS-1	SANGAMON	20	2
CONTRACT NO. 72L31				
ILLINOIS FED. AID PROJECT				

6-01498-0000
 STBG FUNDING
 80% FEDERAL
 20% STATE
 ROADWAY
 0005
 URBAN

CODE NO.	ITEM	UNIT	TOTAL QUANTITY	
40600290	BITUMINOUS MATERIALS (TACK COAT)	POUND	6,990	6,990
40600370	LONGITUDINAL JOINT SEALANT	FOOT	5,548	5,548
40604150	POLYMERIZED HOT-MIX ASPHALT SURFACE COURSE, IL-9.5, MIX "C", N50	TON	1,305	1,305
40800029	BITUMINOUS MATERIALS (TACK COAT)	POUND	322	322
40800050	INCIDENTAL HOT-MIX ASPHALT SURFACING	TON	60	60
44000155	HOT-MIX ASPHALT SURFACE REMOVAL, 1 1/2"	SQ YD	16,247	16,247
67100100	MOBILIZATION	LSUM	1	1
70102620	TRAFFIC CONTROL AND PROTECTION, STANDARD 701501	LSUM	1	1
70300100	SHORT TERM PAVEMENT MARKING	FOOT	1,127	1,127
70300150	SHORT TERM PAVEMENT MARKING REMOVAL	SQ FT	188	188
* 78009000	MODIFIED URETHANE PAVEMENT MARKING - LETTERS AND SYMBOLS	SQ FT	16	16
* 78009005	MODIFIED URETHANE PAVEMENT MARKING - LINE 5"	FOOT	12,434	12,434
* 78009006	MODIFIED URETHANE PAVEMENT MARKING - LINE 6"	FOOT	86	86
* 78009008	MODIFIED URETHANE PAVEMENT MARKING - LINE 8"	FOOT	81	81

* SPECIALTY ITEM

MODEL: 3 (Sheet)
 FILE NAME: c:\pwworking\illinois.gov\0809096\06721.31-shl-SOO.dgn

USER NAME = jacob.drainer	DESIGNED -	REVISED -
	DRAWN -	REVISED -
	CHECKED -	REVISED -
PLOT DATE = 6/26/24	DATE -	REVISED -

STATE OF ILLINOIS
 DEPARTMENT OF TRANSPORTATION

SUMMARY OF QUANTITIES	
SCALE: NTS	SHEET 1 OF 2 SHEETS STA. TO STA.

F.A.U. RTE.	SECTION	COUNTY	TOTAL SHEETS	SHEET NO.
8086	(O-15d)RS-3; 10RS-1	SANGAMON	20	3
ILLINOIS FED. AID PROJECT				

CONTRACT NO. 72L31

PAVEMENT SCHEDULE

LOCATION (STA TO STA)	LENGTH	WIDTH	SURF THICK	(40604150)	(44000155)	(40600370)	(40600290)
				POLY HMA SC	HMA	LONG	BIT MATLS
				IL-9.5	SURF REM	JOINT	TACK CT
				"C" N50	1.5"	SEALANT	MILLING
	(FOOT)	(FOOT)	(INCH)	(TON)	(SQ YD)	(FOOT)	(POUND)
[F.A.U. 8086 (IL 124)]							
1072+96.92 TO 1075+38.30	241.38	39 to 24	1.5	70.97	844.83		380.17
1072+96.92 TO 1121+38.98	4,842.06					4,842.06	
1075+38.30 TO 1121+38.98	4,600.68	24	1.5	1,030.55	12,268.48		5,520.82
(STA EQN):							
1121+38.98 (BK) = 1+00.00 (AH)							
1+00.00 TO 5+64.32	464.32	24	1.5	104.01	1,238.19	464.32	557.18
276+46.00 TO 277+00.00	A = 3,260.40 SQ FT		1.5	30.43	362.27	54.00	163.02
[OLD TIPTON SCHOOL RD.]							
263+26.50 TO 265+14.00	A = 7364.10 SQ FT		1.5	68.73	818.23	187.50	368.21
INCIDENTAL HMA SURF					714.98		
(6-01498-0000) PROJECT TOTAL				1,305	16,247	5,548	6,990

INCIDENTAL HMA SURFACING & HMA SURFACE REMOVAL 1 1/2 (Addition)

DESCRIPTION	STATION	EXIST. TYPE	fr. E.O.P.	WIDTH	THICKNESS	SIDE RD.		(40800050)	(40800029)	(44000155)
						AREA	TOTAL	INCIDENTAL	BIT MATLS	HMA SURF
						(SQ FT)	(TON)	HMA SURF	TACK CT	REM 1 1/2
			(FOOT)	(FOOT)	(INCH)	(SQ FT)	(TON)	(TON)	(POUND)	(SQ YD)
LIMITS OF IMPROVEMENT:	1072+96.62									
SECTION BEGINS	1072+96.62									
ILLINI RD.	1074+77.28	RT	HMA	13	74	1.5	1,173.60	10.95	10.95	58.68
PARKWAY DR.	1079+27.67	LT	HMA	41	23	1.5	1,774.67	16.56	16.56	88.73
JULIA DR.	1083+86.53	RT	HMA	13	38	1.5	657.53	6.14	6.14	32.88
CROWN POINT DR.	1087+15.99	RT	HMA	12	68	1.5	995.61	9.29	9.29	49.78
LANDS DOWNE DR.	1090+51.16	RT	HMA	9	73	1.5	756.77	7.06	7.06	37.84
MIDDLEBURG DR.	1095+36.63	LT	HMA	25	28	1.5	1,076.63	10.05	10.05	53.83
(STA EQN):										
	1121+38.98 (BK)									
	1+00.00 (AH)									
SECTION ENDS	5+62.32									
LIMITS OF IMPROVEMENT:	5+62.32									
(6-01498-0000) PROJECT TOTAL								60	322	714.98

(TO BE ADDED TO
PAVT SCHEDULE)

REV - MS

MODEL: schedule 7 (Sheet)
FILE NAME: c:\p\work\pvt\illiacob.dra\drain@illinois.gov\d098096D672L31-ahhschedule.dgn

USER NAME = jacob.dra	DESIGNED -	REVISED -	STATE OF ILLINOIS DEPARTMENT OF TRANSPORTATION	SCHEDULE OF QUANTITIES	F.A.U RTE.	SECTION	COUNTY	TOTAL SHEETS	SHEET NO.	
	DRAWN -	REVISED -			8086	(O-15d)RS-3; 10RS-1	SANGAMON	20	5	
	CHECKED -	REVISED -			CONTRACT NO. 72L31					
PLOT DATE = 9/24/2024	DATE -	REVISED -			SCALE: NTS	SHEET 1 OF 3 SHEETS	STA.	TO STA.	ILLINOIS FED. AID PROJECT	

PAVEMENT MARKING SCHEDULE

LOCATION (STA TO STA)	LENGTH	(78009005)		(78009006)	(78009008)	(78009024)	(78009000)	(78100100)	(78300200)	(70300100)	(70300150)
		MOD URETH PM LINE 5"		MOD URETH PM - LINE 6"	MOD URETH PM - LINE 8"	MOD URETH PM - LINE 24"	MOD URETH PM LTRS & SYB	RAISED REFL PAVT MRK	RAISED REFL PVT MK REM	SHORT-TERM PAVT MKING (2 APPL)	SHRT-TRM PAVT MK REM
		YELLOW	WHITE	WHITE	WHITE	WHITE	SOLID	SOLID	SOLID	SOLID	SOLID
		SKIP-DASH (FOOT)	DBL-SOLID (FOOT)	SOLID (FOOT)	SOLID (FOOT)	SOLID (FOOT)	SOLID (FOOT)	SOLID (FOOT)	SOLID (SQ FT)	SOLID (SQ FT)	SOLID (SQ FT)
[F.A.U. 8086 (IL 124)]											
1072+96.92 TO 1073+82.43 LT	85.51			85.51				2	2	8.55	2.85
1072+96.92 TO 1075+86.82	289.90		579.80					5	5	28.99	9.66
1072+96.92 TO 1074+28.84	131.92			263.84							
1073+68.29 LT (RT TURN ARROW)							15.60				
1074+28.84 TO 1075+22.49 LT	93.65			93.65							
1075+22.49 TO 1078+83.75	361.26			722.52							
1075+86.82 TO 1121+38.98	4,552.16	1,138.04						58	58	455.22	151.74
1078+83.75 TO 1079+62.81 RT	79.06			79.06							
1079+62.81 TO 1086+65.84	703.03			1,406.06							
1086+65.84 TO 1087+63.68 LT	97.84			97.84							
1087+63.68 TO 1090+05.55	241.87			483.74							
1090+05.55 TO 1090+96.68 LT	91.13			91.13							
1090+96.68 TO 1095+02.93	406.25			812.50							
1095+02.93 TO 1095+63.75 RT	60.82			60.82							
1095+63.75 TO 1102+07.45	643.70			1,287.40							
1102+07.45 TO 1102+64.08 RT	56.63			56.63							
1102+64.08 TO 1110+80.83	816.75			1,633.50							
1110+80.83 TO 1112+69.16 RT	188.33			188.33							
1112+69.16 TO 1121+38.98	869.82			1,739.64							
(STA EQN):											
1121+38.98 (BK) = 1+00.00 (AH)											
1+00.00 TO 3+76.97	276.97			553.94							
1+00.00 TO 5+64.32	464.32	116.08						7	7	46.43	15.48
3+76.97 TO 5+17.30 LT	140.33			140.33							
5+17.30 TO 5+64.32	47.02			94.04							
276+46.00 TO 277+00.00	54.00		108.00					2	2	5.40	1.80
NE Quad (RT)				88.33							
NW Quad (LT)				81.10							
276+57.23 RT						14.00					
RT Turn / NW Quad						15.00					
[OLD TIPTON SCHOOL RD.]											
263+26.50 TO 263+53.37 LT						81.00					
263+26.50 TO 265+14.00	187.50	46.88						3		18.75	6.25
SE Quad (LT)				123.93							
SW Quad (RT)				125.00							
264+03.30 TO 265+14.00	110.70			221.40							
263+41.53 LT						14.00					
RT Turn Ln / SE Quad						15.00					
SUBTOTALS			1,300.99	687.80	10,444.73					563.34	
(6-01498-0000) PROJECT TOTAL			12,434		86	81	58	16	77	74	1,127

MODEL: schedule 8 (Sheet)
FILE NAME: c:\pwworking\cabrerar\09080906\0672L31-shrt-schedule.dgn

USER NAME = rene.cabrera	DESIGNED -	REVISED -
	DRAWN -	REVISED -
	CHECKED -	REVISED -
PLOT DATE = 9/23/2024	DATE -	REVISED -

**STATE OF ILLINOIS
DEPARTMENT OF TRANSPORTATION**

**SCHEDULE OF
QUANTITIES**

SCALE: NTS SHEET 2 OF 3 SHEETS STA. TO STA.

F.A.U. RTE.	SECTION	COUNTY	TOTAL SHEETS	SHEET NO.
8086	(0-15d)RS-3; 10RS-1	SANGAMON	20	6
CONTRACT NO. 72L31				
ILLINOIS FED. AID PROJECT				

FOG SEAL SCHEDULE

LOCATION (STA TO STA)				LENGTH (FOOT)	SHLDRS		(X4060107)
					WIDTH (FOOT)	AREA (SQ FT)	BIT MATLS FS
							(POUND)
[F.A.U. 8086 (IL 124)]							
1072+96.92	TO	1073+59.63	LT	62.71	4	250.84	20.07
1072+96.92	TO	1074+18.83	RT	121.91	4	487.64	39.01
1073+59.63	TO	1075+50.42	LT	190.79		1,225.83	98.07
1075+22.54	TO	1075+50.42	LT	27.88	4	111.52	8.92
1075+50.42	TO	1078+77.75		327.33	4	1,309.32	209.49
1078+77.75	TO	1079+66.81	RT	89.06	4	356.24	28.50
1079+66.81	TO	1083+53.27		386.46	4	1,545.84	247.33
1083+53.27	TO	1084+22.18	LT	68.91	4	275.64	22.05
1084+22.18	TO	1086+60.84		238.66	4	954.64	152.74
1086+60.84	TO	1087+68.88	LT	108.04	4	432.16	34.57
1087+68.88	TO	1090+00.55		231.67	4	926.68	148.27
1090+00.55	TO	1091+00.49	LT	99.94	4	399.76	31.98
1091+00.49	TO	1095+01.90		401.41	4	1,605.64	256.90
1095+01.90	TO	1095+67.69	RT	65.79	4	263.16	21.05
1095+67.69	TO	1097+49.00		181.31	4	725.24	116.04
1097+49.00	TO	1097+91.72	RT	42.72	4	170.88	13.67
1097+91.72	TO	1098+87.07		95.35	4	381.40	61.02
1098+87.07	TO	1099+65.87	LT	78.80	4	315.20	25.22
1099+52.28	TO	1099+97.50	RT	45.22	4	180.88	14.47
1099+97.50	TO	1100+75.37	LT	77.87	4	311.48	24.92
1100+75.37	TO	1102+07.41		132.04	4	528.16	84.51
1102+07.41	TO	1102+64.98	RT	57.57	4	230.28	18.42
1102+64.98	TO	1104+75.88		210.90	4	843.60	134.98
1104+75.88	TO	1105+67.39	RT	91.51	4	366.04	29.28
1105+67.39	TO	1106+85.74		118.35	4	473.40	75.74
1106+85.74	TO	1107+44.78	RT	59.04	4	236.16	18.89
1107+44.78	TO	1110+69.16		324.38	4	1,297.52	207.60
1110+69.16	TO	1112+80.82	RT	211.66	4	846.64	67.73
1112+80.82	TO	1121+38.98		858.16	4	3,432.64	549.22
(STA EQN):							
1121+38.98 (BK) = 1+00.00 (AH)							
1+00.00	TO	3+76.91		276.91	4	1,107.64	177.22
3+76.91	TO	5+17.84	LT	140.93	4	563.72	45.10
5+17.84	TO	5+64.27		46.43	4	185.72	29.72
276+46.00 TO 277+00.00							
NE Quad (RT)					4	294.15	23.53
NW Quad (LT)					4	270.58	21.65
[OLD TIPTON SCHOOL RD.]							
263+26.50 TO 264+03.30							
SE Quad (LT)					4	360.36	28.83
SW Quad (RT)					4	360.22	28.82
264+03.30	TO	265+14.00		110.70	4	442.80	70.85
(6-01498-0000) PROJECT TOTAL							3,187

MODEL: schedule-3 (Sheet)
FILE NAME: c:\p\work\pwr\ofcabrera\d0980096\0672L31-sht-schedule.dgn

USER NAME = rene.cabrera	DESIGNED -	REVISED -	
	DRAWN -	REVISED -	
	CHECKED -	REVISED -	
PLOT DATE = 9/23/2024	DATE -	REVISED -	

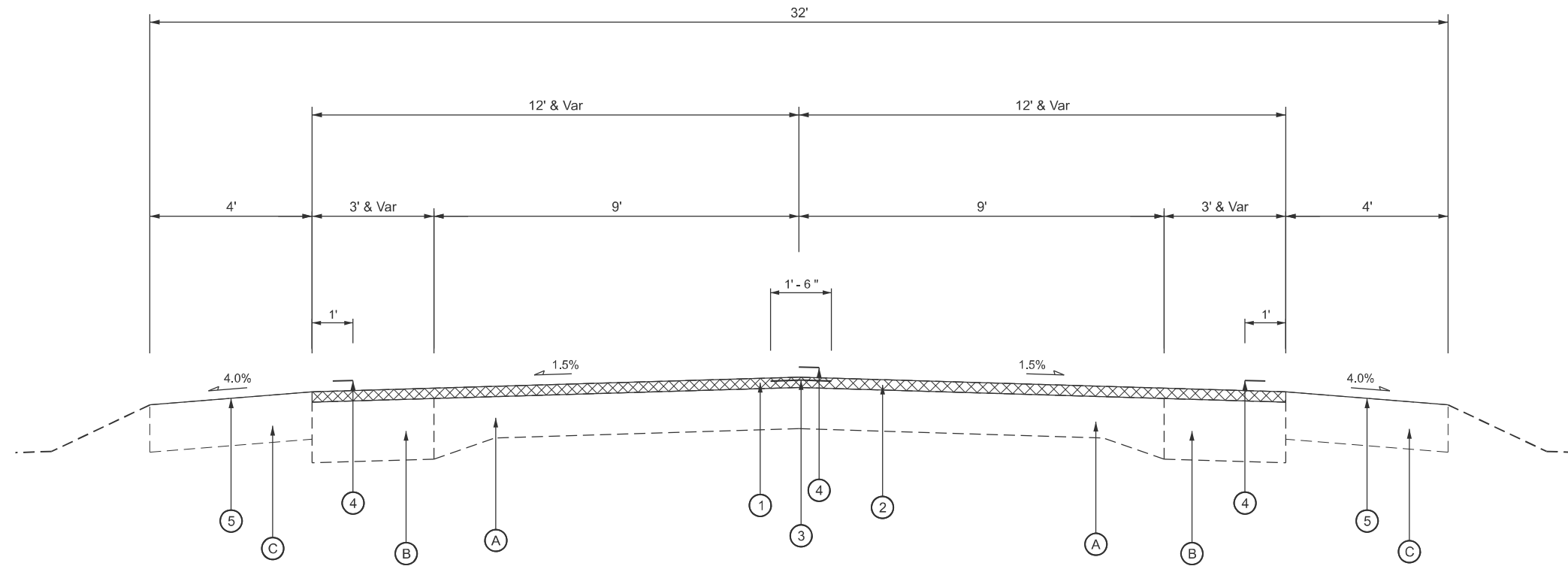
**STATE OF ILLINOIS
DEPARTMENT OF TRANSPORTATION**

**SCHEDULE OF
QUANTITIES**

SCALE: NTS SHEET 3 OF 3 SHEETS STA. TO STA.

F.A.U. RTE.	SECTION	COUNTY	TOTAL SHEETS	SHEET NO.
8086	(O-15d)RS-3; 10RS-1	SANGAMON	20	7
CONTRACT NO. 72L31				
ILLINOIS FED. AID PROJECT				

CL IL 124 (ANDREW RD)



TYPICAL SECTION #1
FAU 8086 (IL 124)
 STATION 1072+96.92 TO 1121+38.98 (BK)
 STATION 1+00.00 (AH) TO STATION 5+64.32

(STA EQN):
 STATION 1121+38.98 (BK) =
 STATION 1+00.00 (AH)

TYPICAL SECTION LEGEND

- | | |
|--|---|
| (A) EXISTING PCC PAVEMENT (9-6-9) & 6" BIT OVERLAY | (1) PROPOSED HOT-MIX ASPHALT SURFACE REMOVAL, 1-1/2" |
| (B) EXISTING BIT BASE COURSE 9" & 3" BIT OVERLAY | (2) PROPOSED POLYMERIZED HOT-MIX ASPHALT SURFACE COURSE, IL -9.5, MIX "C", N50 (1-1/2") |
| (C) EXISTING BIT SHOULDERS 8" | (3) PROPOSED LONGITUDINAL JOINT SEALANT |
| | (4) PROPOSED MODIFIED URETHANE PAVEMENT MARKING - 5" |
| | (5) PROPOSED BITUMINOUS MATERIALS (FOG SEAL) |

MODEL: Typical Section [Sheet]
 FILE NAME: c:\p\work\pvt\jacob.drainer@illinois.gov\d098096\672131-shh-typical_1.dgn

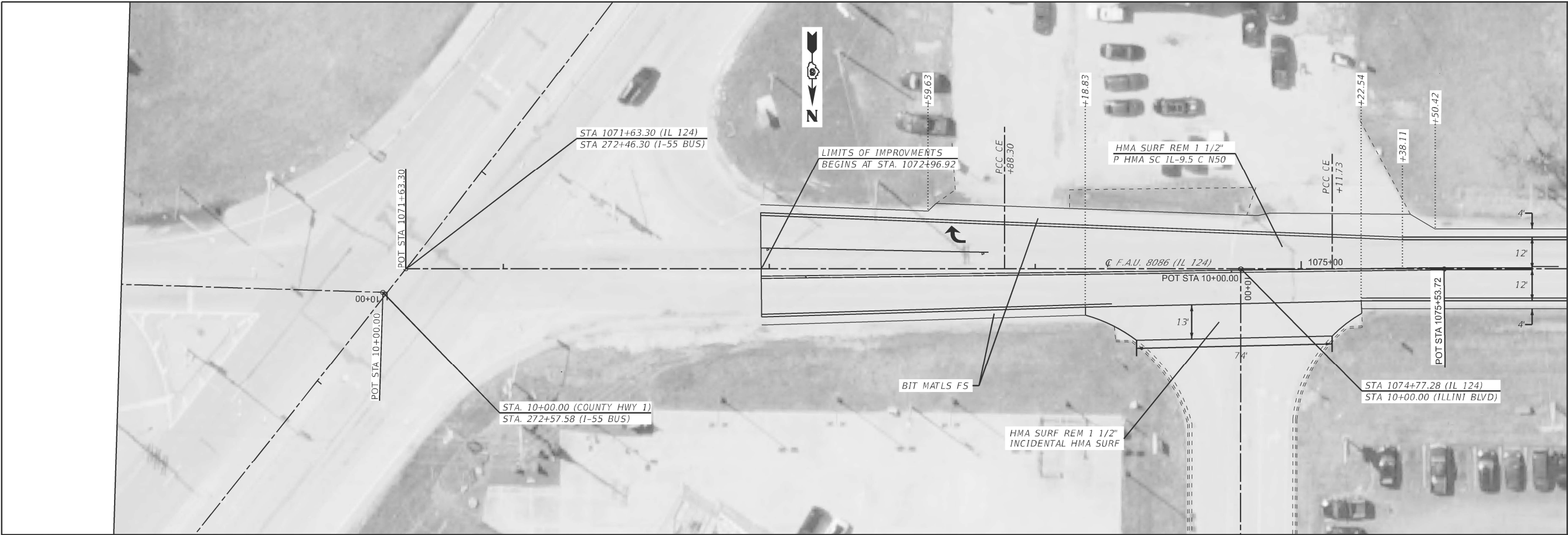
USER NAME = jacob.drainer	DESIGNED -	REVISED -
	DRAWN -	REVISED -
	CHECKED -	REVISED -
PLOT DATE = 10/8/2024	DATE -	REVISED -

STATE OF ILLINOIS
DEPARTMENT OF TRANSPORTATION

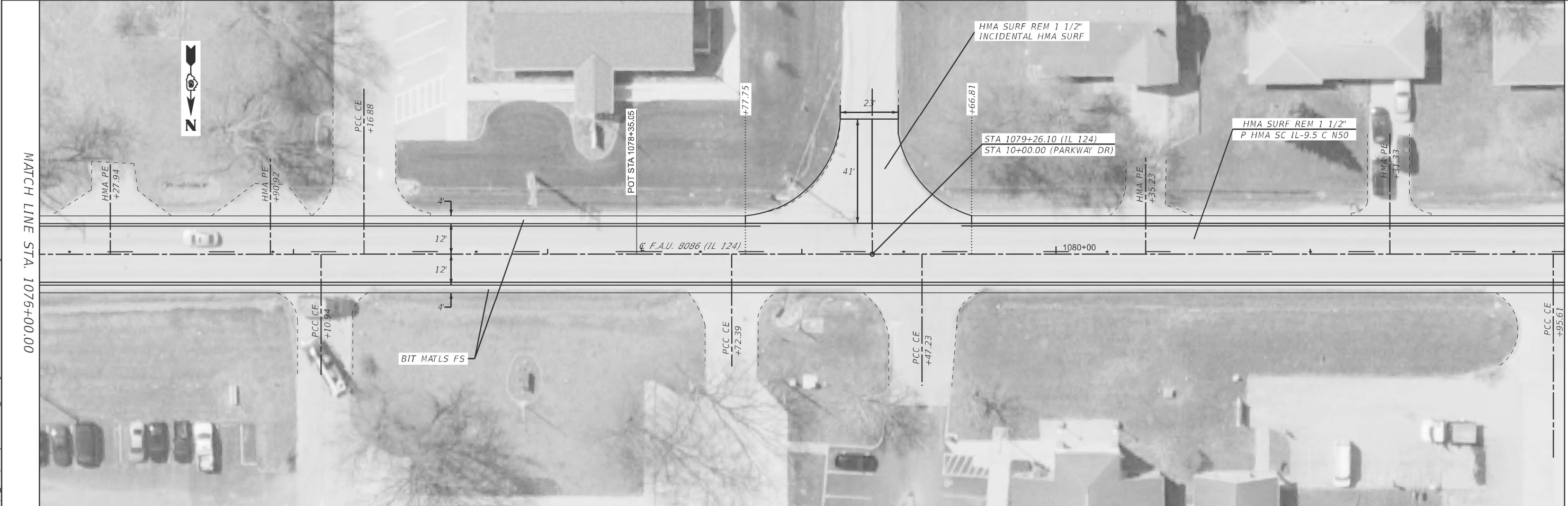
TYPICAL SECTIONS

SCALE: NTS SHEET 1 OF 1 SHEETS STA. 1072+96.92 TO STA. 5+64.32

F.A.U. RTE.	SECTION	COUNTY	TOTAL SHEETS	SHEET NO.
8086	(O-15d)RS-3; 10RS-1	SANGAMON	20	8
CONTRACT NO. 72L31				
ILLINOIS FED. AID PROJECT				



MATCH LINE STA. 1076+00.00



MATCH LINE STA. 1076+00.00

MATCH LINE STA. 1082+00.00

MODEL: PCL - Plan 1 (Sheet)
 FILE NAME: c:\pw\work\pawid\jacob.drainer@illinois.gov\0980961872131-shr-Plan20.dgn

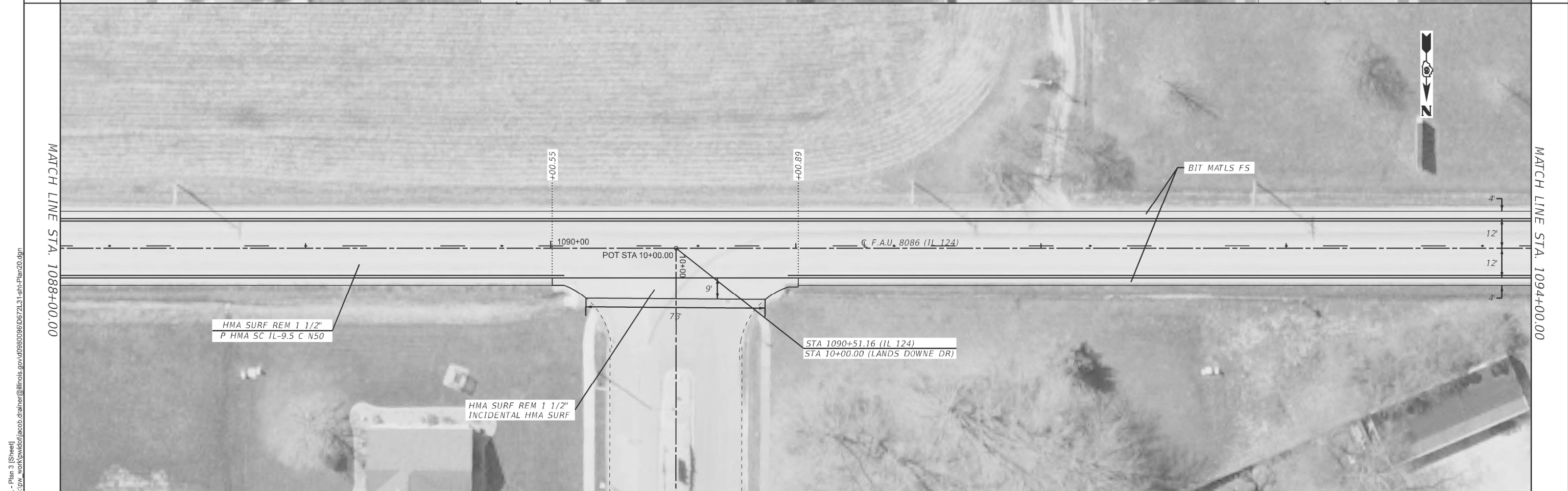
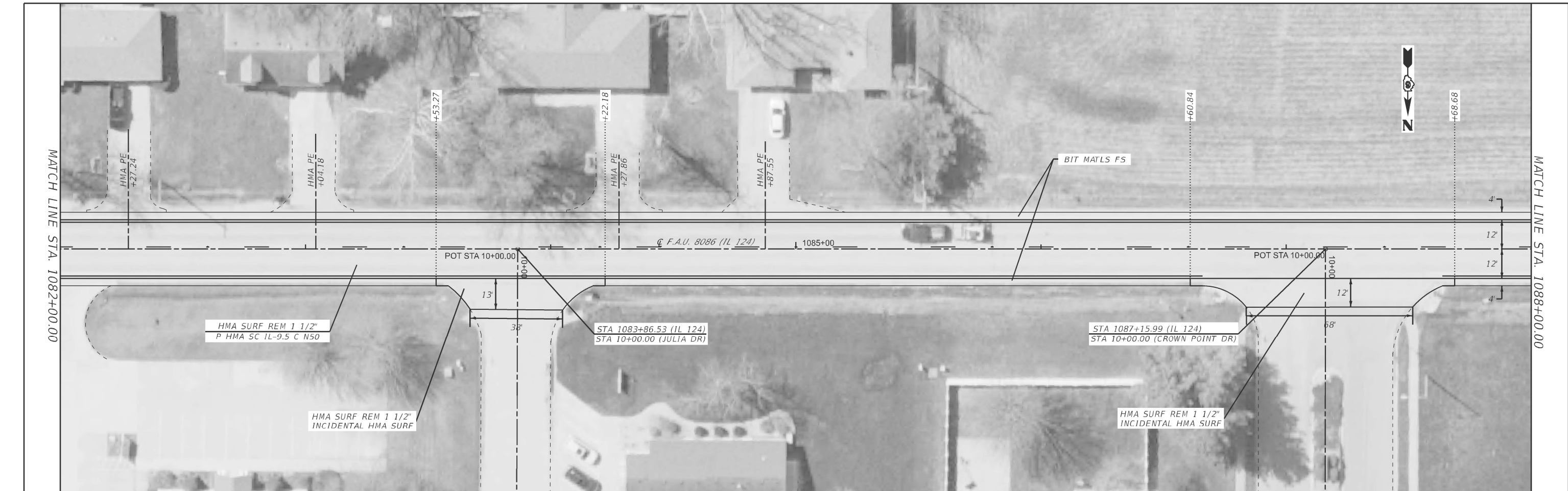
USER NAME = jacob.drainer	DESIGNED -	REVISED -
	DRAWN -	REVISED -
	CHECKED -	REVISED -
PLOT DATE = 10/8/2024	DATE -	REVISED -

**STATE OF ILLINOIS
 DEPARTMENT OF TRANSPORTATION**

PLAN SHEETS

SCALE: 20 SHEET 1 OF 6 SHEETS STA. 1071+63.30 TO STA. 1082+00.00

F.A.U. RTE.	SECTION	COUNTY	TOTAL SHEETS	SHEET NO.
8086	(O-15d)RS-3; 10RS-1	SANGAMON	20	9
CONTRACT NO. 72L31				
ILLINOIS FED. AID PROJECT				



MODEL: P:\CI - Plan 3 (Sheet)
 FILE NAME: c:\p\work\pawid\jacob.drainer@illinois.gov\d098096\8672131-shr-Plan20.dgn

USER NAME = jacob.drainer	DESIGNED -	REVISED -
	DRAWN -	REVISED -
	CHECKED -	REVISED -
PLOT DATE = 10/8/2024	DATE -	REVISED -

STATE OF ILLINOIS
DEPARTMENT OF TRANSPORTATION

PLAN SHEETS
 SCALE: 20 SHEET 2 OF 5 SHEETS STA. 1082+00.00 TO STA. 1094+00.00

F.A.U. RTE.	SECTION	COUNTY	TOTAL SHEETS	SHEET NO.
8086	(O-15d)RS-3; 10RS-1	SANGAMON	20	10
CONTRACT NO. 72L31				
ILLINOIS FED. AID PROJECT				



MODEL: PCL - Plan 5 (Sheet)
 FILE NAME: c:\p\work\72131\sh1-Plan20.dgn

USER NAME = jacob.drainer	DESIGNED -	REVISED -
	DRAWN -	REVISED -
	CHECKED -	REVISED -
PLOT DATE = 10/8/2024	DATE -	REVISED -

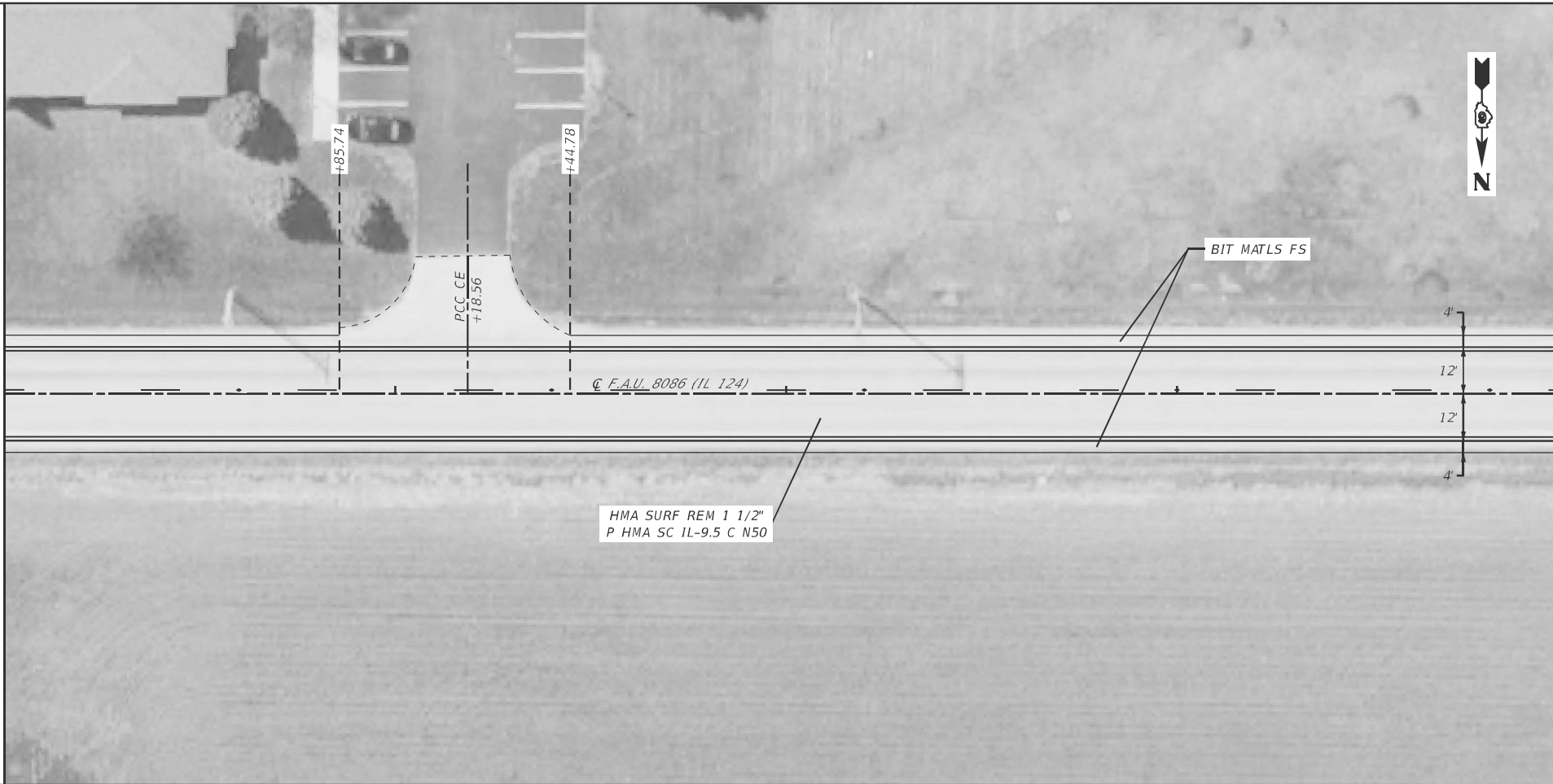
**STATE OF ILLINOIS
 DEPARTMENT OF TRANSPORTATION**

PLAN SHEETS

SCALE: 20 SHEET 3 OF 5 SHEETS STA. 1094+00.00 TO STA. 1106+00.00

F.A.U. RTE.	SECTION	COUNTY	TOTAL SHEETS	SHEET NO.
8086	(O-15d)RS-3; 10RS-1	SANGAMON	20	11
CONTRACT NO. 72L31				
ILLINOIS FED. AID PROJECT				

MATCH LINE STA. 1106+00.00



MATCH LINE STA. 1100+00.00

MODEL: PCI-2-Plan 1 [Sheet]
 FILE NAME: c:\p\work\project\illinois.gov\0980096\672131-shr-Plan20.dgn

USER NAME = jacob.drainer	DESIGNED -	REVISED -
	DRAWN -	REVISED -
	CHECKED -	REVISED -
PLOT DATE = 10/8/2024	DATE -	REVISED -

**STATE OF ILLINOIS
 DEPARTMENT OF TRANSPORTATION**

PLAN SHEETS

SCALE: 20 SHEET 4 OF 6 SHEETS STA. 1106+00.00 TO STA. 1110+00.00

F.A.U. RTE.	SECTION	COUNTY	TOTAL SHEETS	SHEET NO.
8086	(O-15d)RS-3; 10RS-1	SANGAMON	20	12
CONTRACT NO. 72L31				
ILLINOIS FED. AID PROJECT				

MODEL: PCI-5-Plan 7 [Sheet]
 FILE NAME: c:\p\work\k\w\jacob.drainer@illinois.gov\d098096\672131-shr-Plan20.dgn



MATCH LINE STA. 1110+00.00

MATCH LINE STA. 1116+00.00

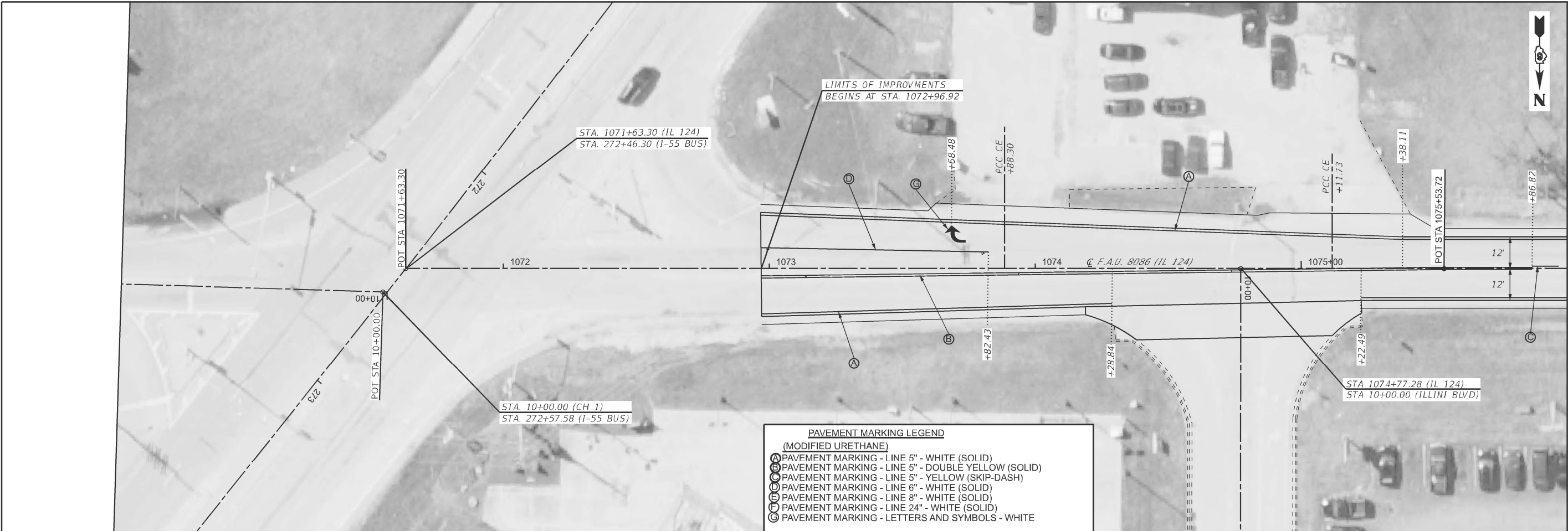
USER NAME = jacob.drainer	DESIGNED -	REVISED -
	DRAWN -	REVISED -
	CHECKED -	REVISED -
PLOT DATE = 10/8/2024	DATE -	REVISED -

**STATE OF ILLINOIS
 DEPARTMENT OF TRANSPORTATION**

PLAN SHEETS

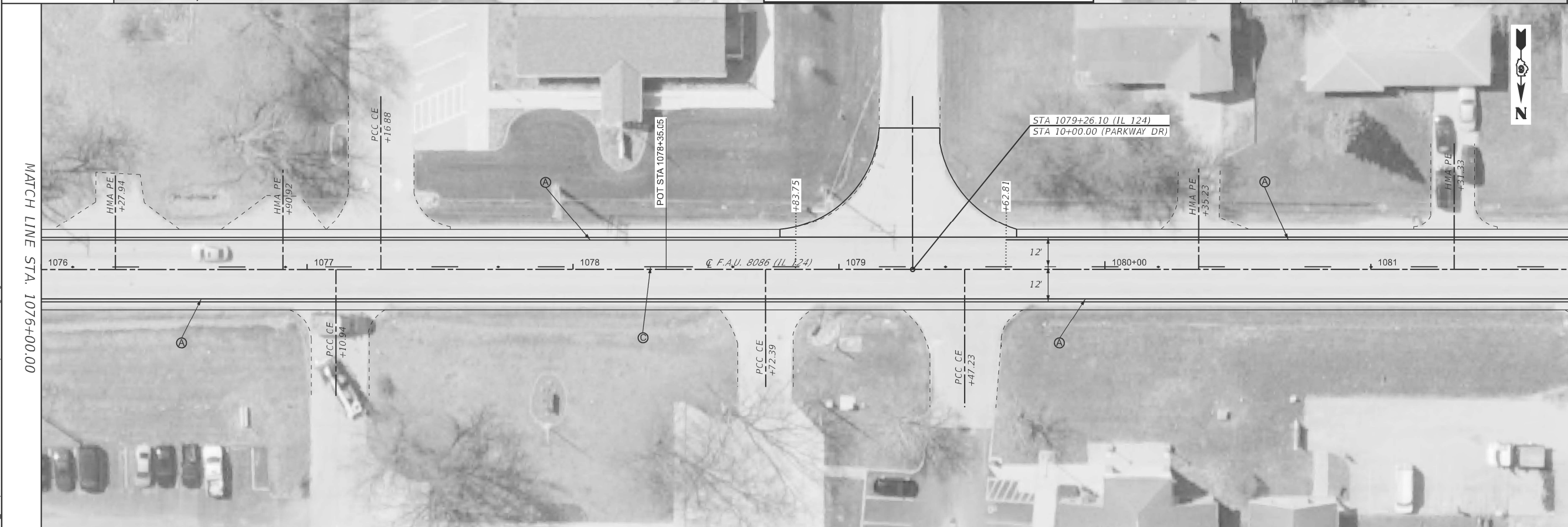
SCALE: 20 SHEET 5 OF 6 SHEETS STA. 1110+00.00 TO STA. 1116+00.00

F.A.U. RTE.	SECTION	COUNTY	TOTAL SHEETS	SHEET NO.
8086	(O-15d)RS-3; 10RS-1	SANGAMON	20	13
CONTRACT NO. 72L31				
ILLINOIS FED. AID PROJECT				



PAVEMENT MARKING LEGEND
(MODIFIED URETHANE)

- A PAVEMENT MARKING - LINE 5" - WHITE (SOLID)
- B PAVEMENT MARKING - LINE 5" - DOUBLE YELLOW (SOLID)
- C PAVEMENT MARKING - LINE 5" - YELLOW (SKIP-DASH)
- D PAVEMENT MARKING - LINE 6" - WHITE (SOLID)
- E PAVEMENT MARKING - LINE 8" - WHITE (SOLID)
- F PAVEMENT MARKING - LINE 24" - WHITE (SOLID)
- G PAVEMENT MARKING - LETTERS AND SYMBOLS - WHITE



PAVEMENT MARKING LEGEND
(MODIFIED URETHANE)

- A PAVEMENT MARKING - LINE 5" - WHITE (SOLID)
- B PAVEMENT MARKING - LINE 5" - DOUBLE YELLOW (SOLID)
- C PAVEMENT MARKING - LINE 5" - YELLOW (SKIP-DASH)
- D PAVEMENT MARKING - LINE 6" - WHITE (SOLID)
- E PAVEMENT MARKING - LINE 8" - WHITE (SOLID)
- F PAVEMENT MARKING - LINE 24" - WHITE (SOLID)
- G PAVEMENT MARKING - LETTERS AND SYMBOLS - WHITE

MODEL: PCL - Plan 1 (Sheet)
 FILE NAME: c:\p\work\pav\illcabrtrars\0980096\0672L31-sh-pavement markings.dgn

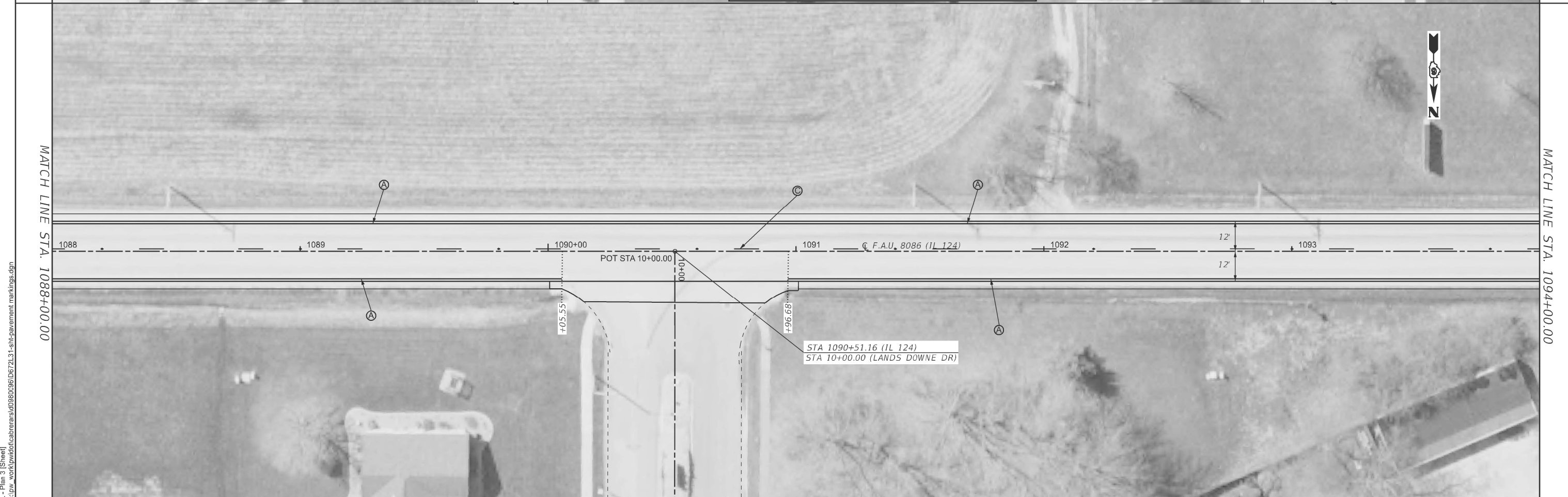
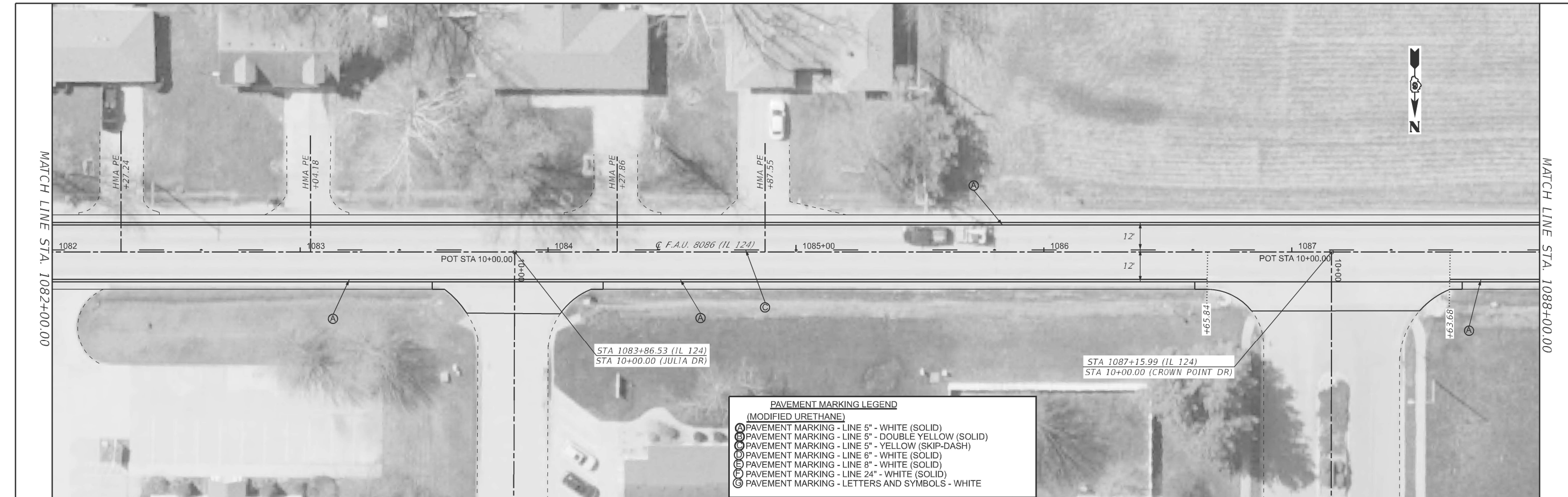
USER NAME = Michael.L.Crow	DESIGNED -	REVISED -
	DRAWN -	REVISED -
	CHECKED -	REVISED -
PLOT DATE = 9/23/2024	DATE -	REVISED -

STATE OF ILLINOIS
DEPARTMENT OF TRANSPORTATION

PAVEMENT MARKING
DETAIL SHEET

SCALE: 20 SHEET 1 OF 6 SHEETS STA. 1071+63.30 TO STA. 1082+00.00

F.A.U. RTE.	SECTION	COUNTY	TOTAL SHEETS	SHEET NO.
8086	(O-15d)RS-3; 10RS-1	SANGAMON	20	15
CONTRACT NO. 72L31				
ILLINOIS FED. AID PROJECT				



MODEL: P:\CI - Plan 3 (Sheet)
 FILE NAME: c:\p\work\pavement\cabrerars\0980096\0672L31-sh-pavement markings.dgn

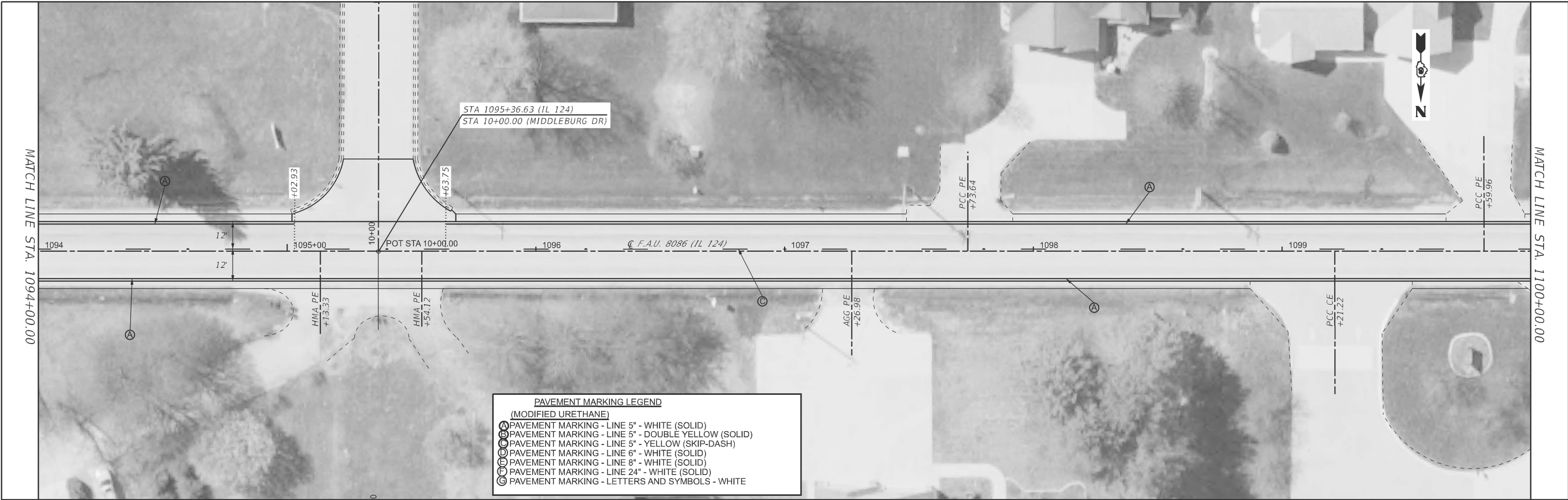
USER NAME = rene.cabrera	DESIGNED -	REVISED -
	DRAWN -	REVISED -
	CHECKED -	REVISED -
PLOT DATE = 9/24/2024	DATE -	REVISED -

STATE OF ILLINOIS
DEPARTMENT OF TRANSPORTATION

PAVEMENT MARKING
DETAIL SHEET

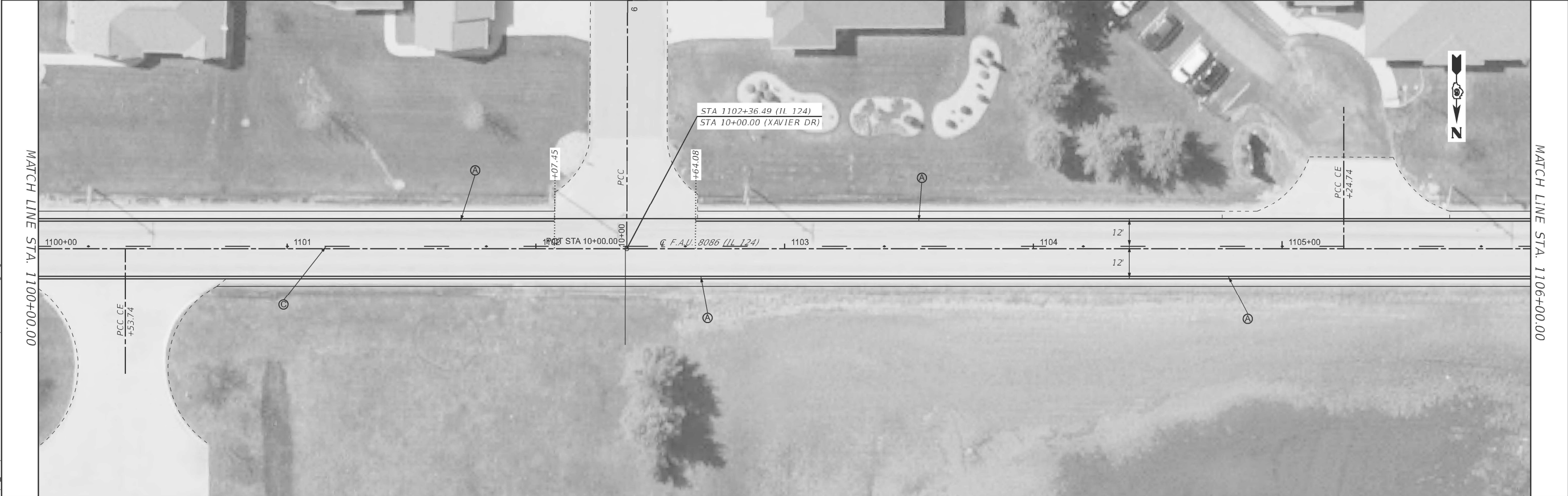
SCALE: 20 SHEET 2 OF 6 SHEETS STA. 1082+00.00 TO STA. 1094+00.00

F.A.U. RTE.	SECTION	COUNTY	TOTAL SHEETS	SHEET NO.
8086	(O-15d)RS-3; 10RS-1	SANGAMON	20	16
CONTRACT NO. 72L31				
ILLINOIS FED. AID PROJECT				



PAVEMENT MARKING LEGEND
(MODIFIED URETHANE)

- Ⓐ PAVEMENT MARKING - LINE 5" - WHITE (SOLID)
- Ⓑ PAVEMENT MARKING - LINE 5" - DOUBLE YELLOW (SOLID)
- Ⓒ PAVEMENT MARKING - LINE 5" - YELLOW (SKIP-DASH)
- Ⓓ PAVEMENT MARKING - LINE 6" - WHITE (SOLID)
- Ⓔ PAVEMENT MARKING - LINE 8" - WHITE (SOLID)
- Ⓕ PAVEMENT MARKING - LINE 24" - WHITE (SOLID)
- Ⓖ PAVEMENT MARKING - LETTERS AND SYMBOLS - WHITE



MODEL: PCL - Plan 5 (Sheet)
 FILE NAME: c:\p\work\pav\cabrerars\09080096\0672L31-sh-pavement markings.dgn

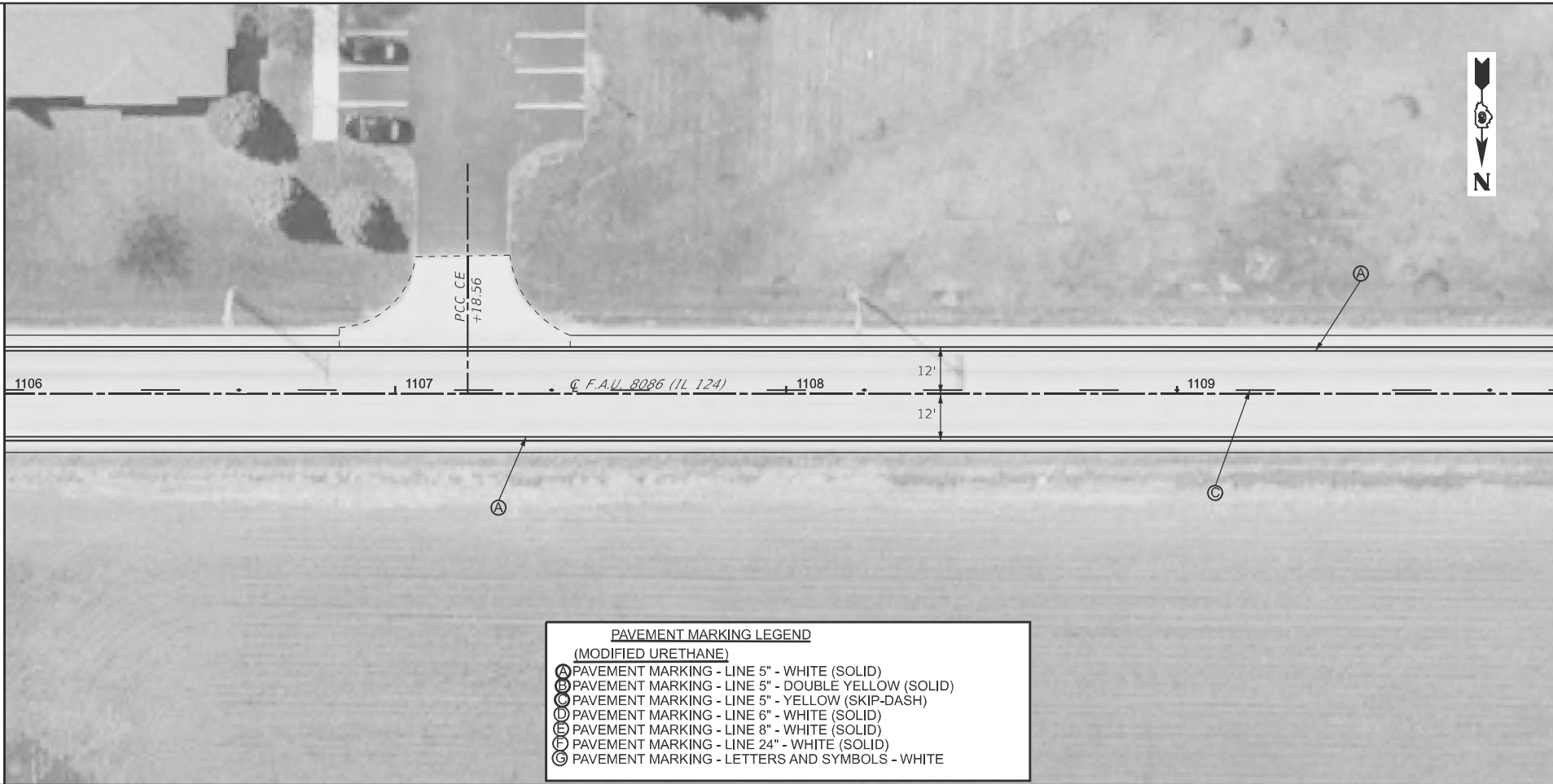
USER NAME = rene.cabrera	DESIGNED -	REVISED -
	DRAWN -	REVISED -
	CHECKED -	REVISED -
PLOT DATE = 9/24/2024	DATE -	REVISED -

**STATE OF ILLINOIS
DEPARTMENT OF TRANSPORTATION**

PLAN SHEETS	
PAVEMENT MARKINGS	
SCALE: 20	SHEET 3 OF 6 SHEETS
STA. 1094+00.00	TO STA. 1106+00.00

F.A.U. RTE.	SECTION	COUNTY	TOTAL SHEETS	SHEET NO.
8086	(O-15d)RS-3; 10RS-1	SANGAMON	20	17
CONTRACT NO. 72L31				
ILLINOIS FED. AID PROJECT				

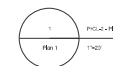
MATCH LINE STA. 1106+00.00



MATCH LINE STA. 1100+00.00

PAVEMENT MARKING LEGEND
(MODIFIED URETHANE)

- Ⓐ PAVEMENT MARKING - LINE 5" - WHITE (SOLID)
- Ⓑ PAVEMENT MARKING - LINE 5" - DOUBLE YELLOW (SOLID)
- Ⓒ PAVEMENT MARKING - LINE 5" - YELLOW (SKIP-DASH)
- Ⓓ PAVEMENT MARKING - LINE 6" - WHITE (SOLID)
- Ⓔ PAVEMENT MARKING - LINE 8" - WHITE (SOLID)
- Ⓕ PAVEMENT MARKING - LINE 24" - WHITE (SOLID)
- Ⓖ PAVEMENT MARKING - LETTERS AND SYMBOLS - WHITE



MODEL: PCI-2-Plan 1 [Sheet]
FILE NAME: c:\p\work\pav\cabrerars\0980096\0672L31-shit-pavement markings.dgn

USER NAME = rene.cabrera	DESIGNED -	REVISED -
	DRAWN -	REVISED -
	CHECKED -	REVISED -
PLOT DATE = 9/24/2024	DATE -	REVISED -

**STATE OF ILLINOIS
DEPARTMENT OF TRANSPORTATION**

**PAVEMENT MARKING
DETAIL SHEET**

SCALE: 20 SHEET 4 OF 6 SHEETS STA. 1106+00.00 TO STA. 1100+00.00

F.A.U. RTE.	SECTION	COUNTY	TOTAL SHEETS	SHEET NO.
8086	(O-15d)RS-3; 10RS-1	SANGAMON	20	18
CONTRACT NO. 72L31				
ILLINOIS FED. AID PROJECT				

MODEL: PCI-5-Plan 7 [Sheet]
 FILE NAME: c:\p\work\15101\michael.l.crow@illinois.gov\d0880096\0672L31-sh-pavement markings.dgn

MATCH LINE STA. 1110+00.00

MATCH LINE STA. 1116+00.00



PAVEMENT MARKING LEGEND (MODIFIED URETHANE)	
A	PAVEMENT MARKING - LINE 5" - WHITE (SOLID)
B	PAVEMENT MARKING - LINE 5" - DOUBLE YELLOW (SOLID)
C	PAVEMENT MARKING - LINE 5" - YELLOW (SKIP-DASH)
D	PAVEMENT MARKING - LINE 6" - WHITE (SOLID)
E	PAVEMENT MARKING - LINE 8" - WHITE (SOLID)
F	PAVEMENT MARKING - LINE 24" - WHITE (SOLID)
G	PAVEMENT MARKING - LETTERS AND SYMBOLS - WHITE

USER NAME = Michael.L.Crow	DESIGNED -	REVISED -
	DRAWN -	REVISED -
	CHECKED -	REVISED -
PLOT DATE = 9/24/2024	DATE -	REVISED -

**STATE OF ILLINOIS
 DEPARTMENT OF TRANSPORTATION**

**PAVEMENT MARKING
 DETAIL SHEET**

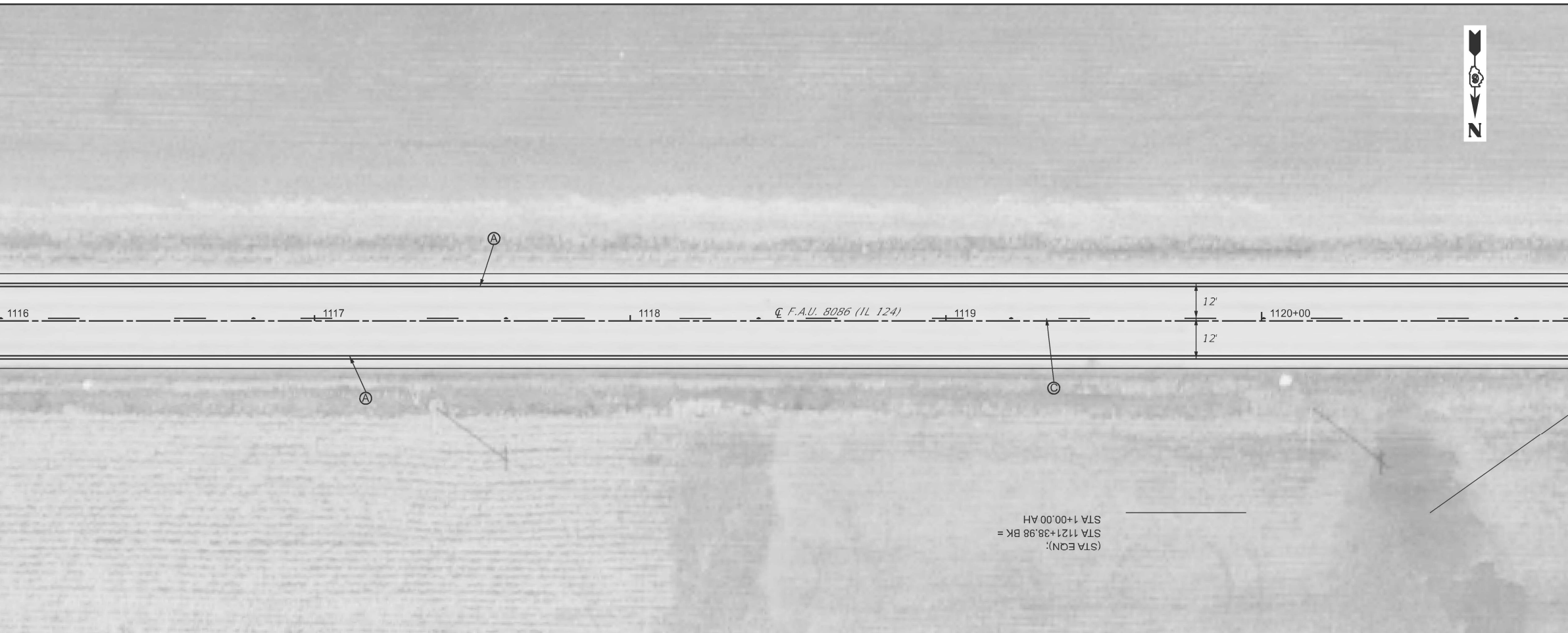
SCALE: 20 SHEET 5 OF 6 SHEETS STA. 1110+00.00 TO STA. 1116+00.00

F.A.U. RTE.	SECTION	COUNTY	TOTAL SHEETS	SHEET NO.
8086	(O-15d)RS-3; 10RS-1	SANGAMON	20	19
CONTRACT NO. 72L31				
ILLINOIS FED. AID PROJECT				



MATCH LINE STA. 1116+00.00

MATCH LINE STA. 1121+00.00



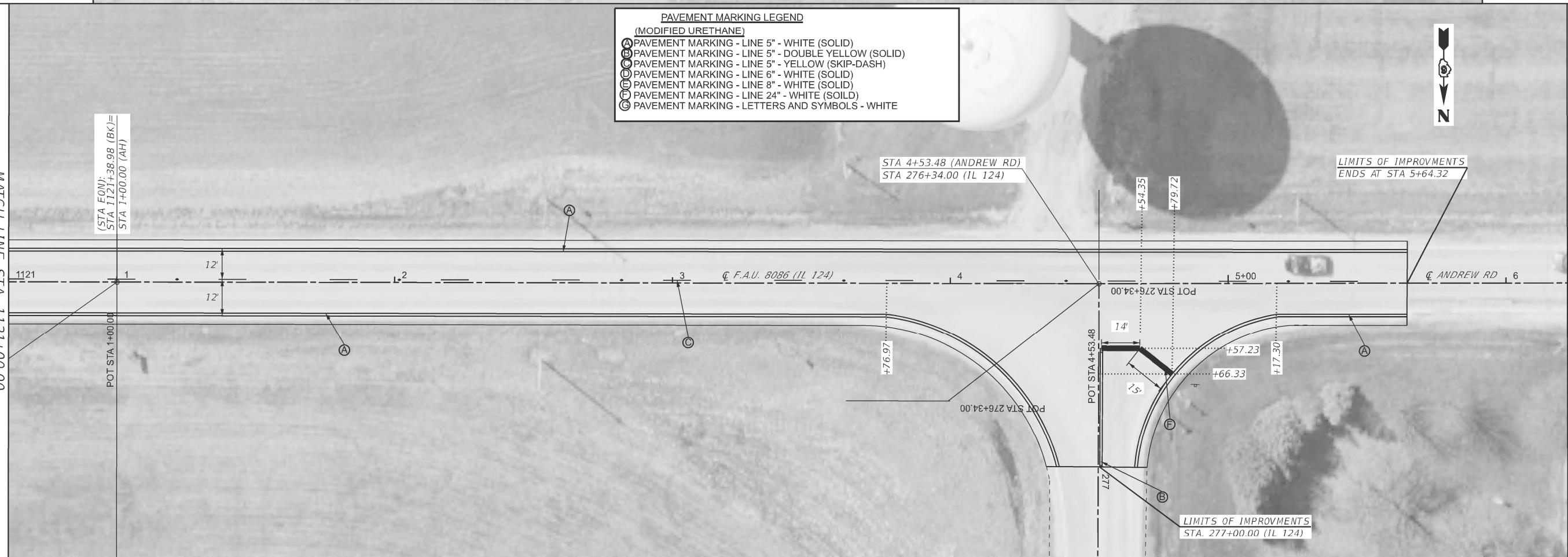
PAVEMENT MARKING LEGEND
(MODIFIED URETHANE)

- A PAVEMENT MARKING - LINE 5" - WHITE (SOLID)
- B PAVEMENT MARKING - LINE 5" - DOUBLE YELLOW (SOLID)
- C PAVEMENT MARKING - LINE 5" - YELLOW (SKIP-DASH)
- D PAVEMENT MARKING - LINE 6" - WHITE (SOLID)
- E PAVEMENT MARKING - LINE 8" - WHITE (SOLID)
- F PAVEMENT MARKING - LINE 24" - WHITE (SOILD)
- G PAVEMENT MARKING - LETTERS AND SYMBOLS - WHITE



MATCH LINE STA. 1121+00.00

(STA EQN):
STA 1121+38.98 (BK) =
STA 1+00.00 (AH)



MODEL: PCI-1 - Plan 11 (Sheet)
FILE NAME: c:\pwworking\dmichael.l.crow@illinois.gov\d080096\0672L3-sh-pavement markings.dgn

USER NAME = Michael.L.Crow	DESIGNED -	REVISED -
	DRAWN -	REVISED -
	CHECKED -	REVISED -
PLOT DATE = 9/24/2024	DATE -	REVISED -

STATE OF ILLINOIS
DEPARTMENT OF TRANSPORTATION

PAVEMENT MARKING
DETAIL SHEET

SCALE: 20 SHEET 6 OF 6 SHEETS STA. 1116+00.00 TO STA. 7+61.02 R2

F.A.U. RTE.	SECTION	COUNTY	TOTAL SHEETS	SHEET NO.
8086	(O-15d)RS-3; 10RS-1	SANGAMON	20	20
CONTRACT NO. 72L31				
ILLINOIS FED. AID PROJECT				