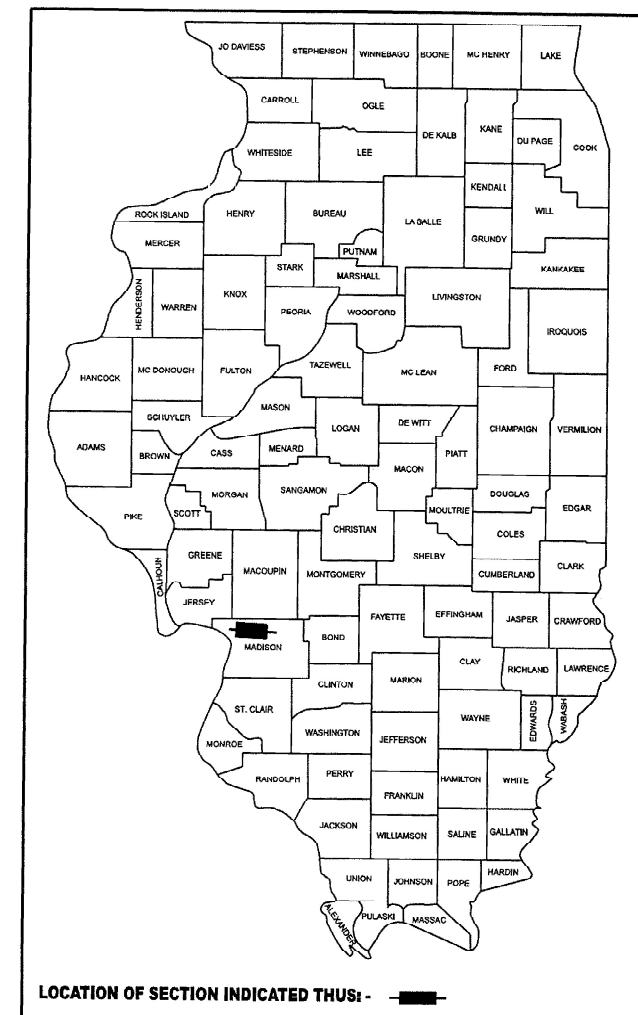


STATE OF ILLINOIS
DEPARTMENT OF TRANSPORTATION

F.A.P. RTE.	SECTION	COUNTY	TOTAL SHEETS	SHEET NO.
785	133RS-7	MADISON	10	1
		ILLINOIS	CONTRACT NO. 76L46	

D-98-093-24



PROPOSED HIGHWAY PLANS

FAP ROUTE 785 (IL 140)
SECTION 133RS-7
SMART OVERLAY, PATCHING - CM
MADISON COUNTY

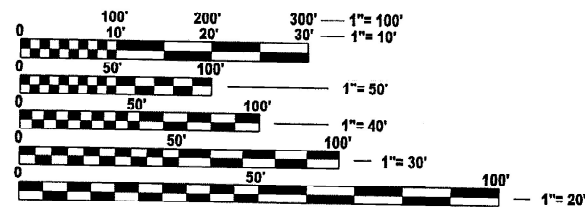
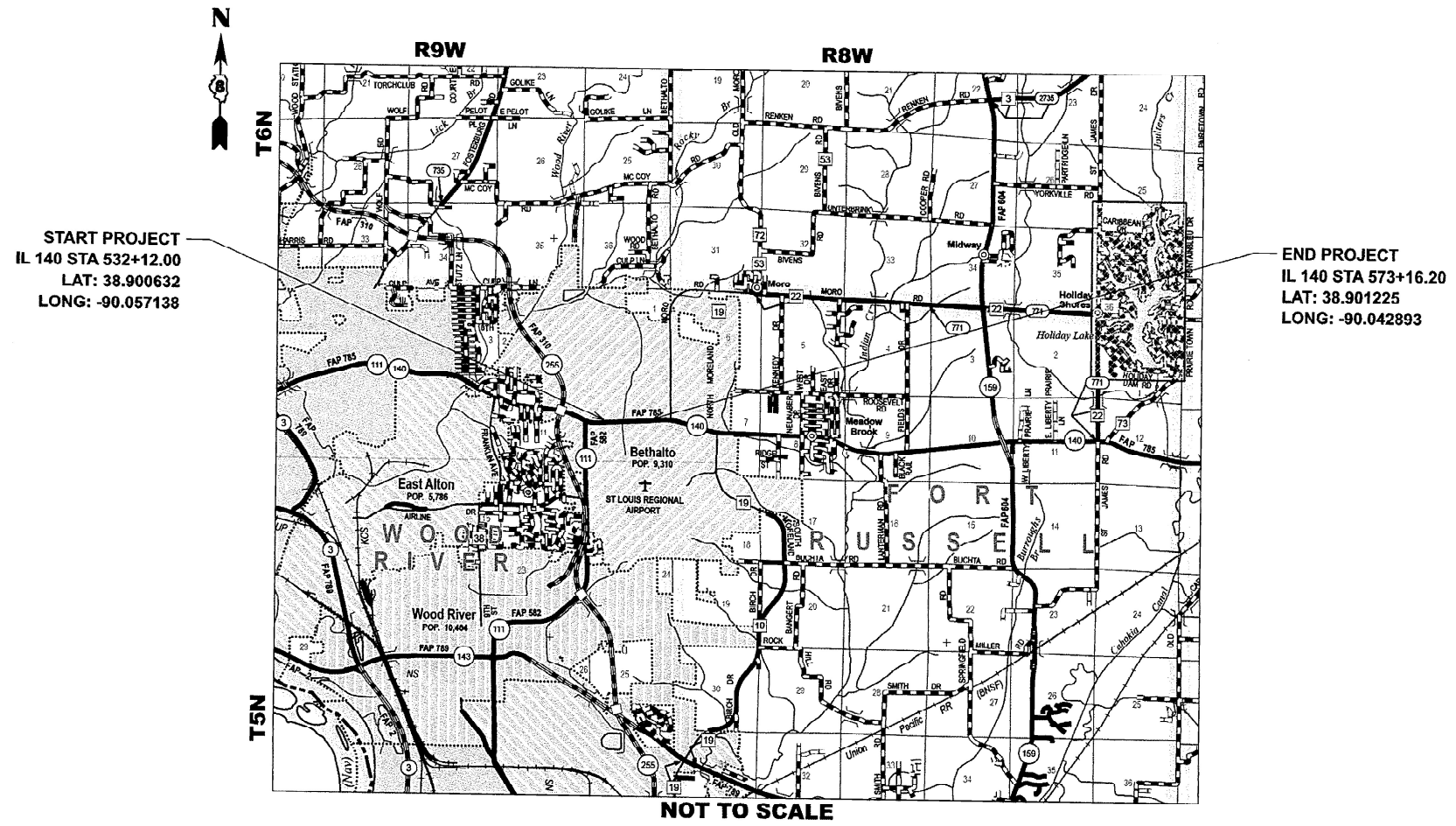
C-98-179-24

FOR INDEX OF SHEETS, SEE SHEET NO. 2

TRAFFIC DATA

2023 ADT = 16900 (ACTUAL)
2024 ADT = 17000 (ESTIMATED)
2044 ADT = 18800 (ESTIMATED)
SU = 2.4% MU = 1.2%

FUNCTIONAL CLASSIFICATION: OTHER PRINCIPAL ARTERIAL



FULL SIZE PLANS HAVE BEEN PREPARED USING STANDARD ENGINEERING SCALES. REDUCED SIZED PLANS WILL NOT CONFORM TO STANDARD SCALES. IN MAKING MEASUREMENTS ON REDUCED PLANS, THE ABOVE SCALES MAY BE USED.

J.U.L.I.E.
JOINT UTILITY LOCATION INFORMATION FOR EXCAVATION
1-800-892-0123
OR 811

PROJECT ENGINEER: BILLIE OWEN
PROJECT MANAGER: MIKE BERG

CONTRACT NO. 76L46

GROSS LENGTH = 4104.2 FT. = 0.78 MILES
NET LENGTH = 4104.2 FT. = 0.78 MILES

STATE OF ILLINOIS
DEPARTMENT OF TRANSPORTATION

SUBMITTED Oct 24 2024
Kirk H. Johnson
REGIONAL ENGINEER

December 6, 2024
Scott A. Elk
ENGINEER OF DESIGN AND ENVIRONMENT

December 6, 2024
James J. Guerin
DIRECTOR OF HIGHWAYS PROJECT IMPLEMENTATION

PRINTED BY THE AUTHORITY
OF THE STATE OF ILLINOIS

INDEX OF SHEETS

- 1. COVER SHEET
- 2. INDEX, HIGHWAY STANDARDS, GENERAL NOTES, MIXTURE REQUIREMENTS & COMMITMENTS
- 3-4. SUMMARY OF QUANTITIES
- 5-6. TYPICAL SECTIONS
- 7. SCHEDULE OF QUANTITIES
- 8. LOCATION MAP
- 9. BUS STOP & CMP- DETAILS
- 10. TEXAS BLVD PAVEMENT MARKING SHEET

HIGHWAY STANDARDS

001006	DECIMAL OF AN INCH & OF A FOOT	420001-10	PAVEMENT JOINTS
000001-08	STANDARD SYMBOLS, ABBREVIATIONS & PATTERNS	720001-01	SIGN PANEL MOUNTING DETAILS
442101-09	CLASS B PATCHES	720006-04	SIGN PANEL ERECTION DETAILS
442201-03	CLASS D PATCHES		
542401-04	METAL FLARED END SECTION FOR PIPE CULVERTS		
701006-05	OFF-ROAD OPERATIONS, 2L, 2W, 15' (4.5 m) TO 24" (600 mm) FROM PAVEMENT EDGE		
701301-04	LANE CLOSURE, 2L, 2W, SHORT TIME OPERATIONS		
701311-03	LANE CLOSURE 2L, 2W MOVING OPERATIONS - DAY ONLY		
701502-09	URBAN LANE CLOSURE, 2L, 2W, WITH BIDIRECTIONAL LEFT TURN LANE		
701901-10	TRAFFIC CONTROL DEVICES		
780001-05	TYPICAL PAVEMENT MARKINGS		
781001-04	TYPICAL APPLICATIONS RAISED REFLECTIVE PAVEMENT MARKERS		

HIGHWAY STANDARDS CONTINUED

- 7. ONLY SHORT TERM PAVEMENT MARKING REMOVAL FROM THE FINAL SURFACE SHALL BE PAID FOR AS "SHORT TERM PAVEMENT MARKING REMOVAL."
- 8. THE RESIDENT ENGINEER SHALL VERIFY THE EXISTENCE OF HIGHWAY LIGHTING, INTELLIGENT TRANSPORTATION SYSTEMS (I.T.S.) UTILITIES, AND/OR ELECTRICAL CABLES ASSOCIATED WITH TRAFFIC SIGNALS WITHIN THE PROJECT LIMITS. IF ANY OF THESE EXIST WITHIN THE PROJECT LIMITS, AND IF THESE ITEMS REQUIRE LOCATING, THE CONTRACTOR SHALL BE DIRECTED TO DO SO ACCORDING TO SECTION 803 OF THE STANDARD SPECIFICATIONS. THIS WORK SHALL BE PAID FOR ACCORDING TO ARTICLE 109.04 OF THE STANDARD SPECIFICATIONS.
- 9. THE FOLLOWING MIXTURE REQUIREMENTS ARE APPLICABLE FOR THIS PROJECT:

GENERAL NOTES

- 1. THE UTILITIES KNOWN TO HAVE FACILITIES WITHIN THE PROJECT AREA ARE AS FOLLOWS:
 - AMEREN ILLINOIS
 - AT&T ILLINOIS
 - VILLAGE OF BETHALTO
 - CHARTER COMMUNICATIONS, INC.
 - CLEARWAVE FIBER LLC
 - EVERSTREAM GLC HOLDING COMPANY
- 2. NO SURVEY WAS PERFORMED FOR THIS PROJECT AND THE PLANS WERE CREATED USING MICROFILM AND FIELD MEASUREMENTS.
- 3. THE PROPOSED PAVEMENT MARKING SHALL MATCH THE LOCATIONS OF THE EXISTING PAVEMENT MARKING, AS DIRECTED BY THE ENGINEER UNLESS NOTED OTHERWISE ON THE TEXAS BLVD PAVEMENT SHEET.
- 4. FOUR CHANGEABLE MESSAGE SIGNS SHALL BE REQUIRED FOR THIS PROJECT, THEY SHALL BE PLACED TWO WEEKS PRIOR TO ANY LANE CLOSURE. THE CHANGEABLE MESSAGE SIGNS SHALL BE PLACED ALONG IL 140, IL 111, & TEXAS BLVD OR AT THE DIRECTION OF THE ENGINEER.
- 5. THE DEPARTMENT STRONGLY ENCOURAGES THE PRIME CONTRACTOR AND THEIR APPROVED SUB-CONTRACTORS TO HIRE MINORITY, WOMEN AND DISADVANTAGED INDIVIDUALS FROM ITS FEDERALLY FUNDED HIGHWAY CONSTRUCTION CAREERS TRAINING PROGRAM (HCCTP) TO HELP MEET WORKFORCE AND TRAINEE GOALS. THIS PROGRAM IS TRAINING MINORITIES, WOMEN AND DISADVANTAGED INDIVIDUALS IN HIGHWAY CONSTRUCTION RELATED SKILLS, E.G., MATH FOR THE TRADES, JOB READINESS, TECHNICAL SKILLS COURSEWORK (CARPENTRY, CONCRETE FLATWORK, BLUEPRINT READING, SITE PLANS, SITE WORK, TOOLS USE, ETC.) AND OSHA 10 HOUR CERTIFICATION, TO PREPARE THEM FOR A CAREER IN THE HIGHWAY CONSTRUCTION TRADES. GRADUATES ARE WELL-TRAINED AND READY TO BECOME PRODUCTIVE ENTRY-LEVEL CONSTRUCTION WORKERS. CONTACT THE DISTRICT 8 EEO OFFICE AT 618-346-3360 AND/OR THE HCCTP COORDINATOR AT 618-874-6528 TO LEARN MORE ABOUT THE PROGRAM AND FOR ASSISTANCE IN MEETING WORKFORCE AND TRAINEE GOALS.
- 6. ALL TURF AREAS DISTURBED BY THE CONTRACTOR SHALL BE SEED WITH THE APPROPRIATE EROSION CONTROL, AS DIRECTED BY THE ENGINEER, AT THE CONTRACTOR'S EXPENSE

MIXTURE REQUIREMENTS			
MIXTURE USE	POLY SURFACE	SHOULDER (SURFACE)	BINDER CULVERT REPLACEMENT @ HOMM ST
AC/PG	SBS PG 70-28	PG 64-22	PG 64-22
DESIGN AIR VOIDS	4.0% @ Ndes=70	4.0% @ Ndes=30	4.0% @ Ndes=70
MIX COMPOSITION (GRADATION)	IL 9.5	IL 9.5L	IL 19.0
FRICITION AGG	MIXTURE "D"	MIXTURE "C"	MIXTURE "B"
QUALITY MGMT PROGRAM	QCP	QC/QA	QC/QA
MatTranDev Required?	NO	NO	NO

PLAN QUANTITIES FOR HOT-MIX ASPHALT ITEMS ARE CALCULATED USING A UNIT WEIGHT OF 112 LBS/SQ YD/IN

COMMITMENTS

NONE

REV - MS

MODEL: Unlited [Sheet]
FILE NAME: c:\p\work\pav\std\bergmnd\1018661108761-46-shl-gemnote.dgn

USER NAME = michael.berg	DESIGNED -	REVISED -
	DRAWN -	REVISED -
	CHECKED -	REVISED -
PLOT DATE = 10/25/2024	DATE -	REVISED -

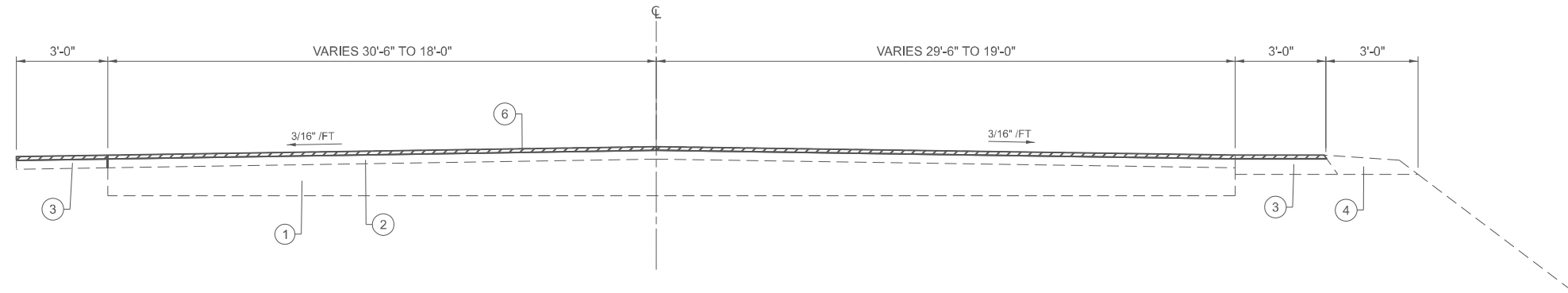
**STATE OF ILLINOIS
DEPARTMENT OF TRANSPORTATION**

**INDEX, HIGHWAY STANDARDS, GENERAL NOTES,
MIXTURE REQUIREMENTS & COMMITMENTS**

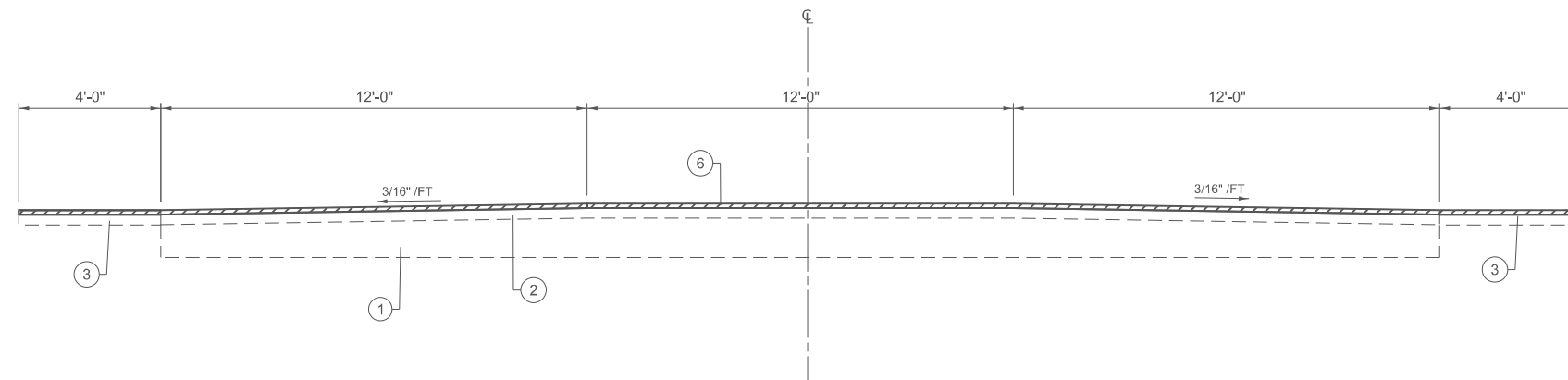
SCALE: SHEET 1 OF 1 SHEETS STA. TO STA.

F.A.P. RTE.	SECTION	COUNTY	TOTAL SHEETS	SHEET NO.
785	133RS-7	MADISON	10	2
CONTRACT NO. 76L46				
ILLINOIS FED. AID PROJECT				

133RS-7



EXISTING TYPICAL SECTION
STA. 532+12 TO STA. 535+95



EXISTING TYPICAL SECTION
STA. 535+95 TO STA. 573+16.20

LEGEND

- ① ORIGINAL P.C.C. PAVEMENT
- ② EXISTING HMA OVERLAY, VARIES
- ③ EXISTING BITUMINOUS SHOULDER
- ④ EXISTING AGGREGATE SHOULDER
- ⑤ EXISTING CONCRETE MEDIAN
- ⑥ EXISTING HOT-MIX ASPHALT SURFACE REMOVAL - 1 1/2"

MODEL: Existing Sections [Sheet]
FILE NAME: c:\p\work\w7646\illinois.gov\joshua.huffstutter@illinois.gov\10186651\0876145-sh-typical.sgm

USER NAME = joshua.huffstutter	DESIGNED -	REVISED -
	DRAWN -	REVISED -
	CHECKED -	REVISED -
PLOT DATE = 9/26/2024	DATE -	REVISED -

STATE OF ILLINOIS
DEPARTMENT OF TRANSPORTATION

EXISTING TYPICAL SECTIONS

SCALE: SHEET 1 OF 2 SHEETS STA. TO STA.

F.A.P. RTE.	SECTION	COUNTY	TOTAL SHEETS	SHEET NO.
785	133RS-7	MADISON	10	5
CONTRACT NO. 76L46				
ILLINOIS FED. AID PROJECT				

PAVEMENT MARKING SCHEDULE

LOCATION		THERMOPLASTIC AND TEMPORARY PAVEMENT MARKING				PAVEMENT MARKING REMOVAL - WATER BLASTING	SHORT TERM PAVEMENT MARKING (2 Applications)	SHORT TERM PAVEMENT MARKING REMOVAL	RAISED REFLECTIVE PAVEMENT MARKER		RAISED REFLECTIVE PAVEMENT MARKER REMOVAL
STATION		LINE - 6" THERMOPLASTIC / LINE - 4" TEMPORARY							ONE WAY CRYSTAL	TWO WAY AMBER	
FROM	TO	YELLOW SOLID	SKIP-DASH YELLOW	WHITE SOLID EDGE LINE	TURN LANE SYMBOLS						
		FEET	FEET	FEET	SQ FT	SQ FT	FEET	SQ FT	EACH	EACH	EACH
0532+12.0	0535+95.0	766	200	766	62.4	639.8	140	24	0	20	20
0535+95.0	0573+16.2	7442	1880	7442	592.8	6181.1	1360	227	8	186	194
TOTAL		8208	2080	8208	655.2	6820.9	1500	251	8	206	214

RESURFACING SCHEDULE

STATION		DIMENSION		HMA SURFACE REMOVAL, 1 1/2", (INCLUDES SHOULDER)	LONGITUDINAL JOINT SEALANT	BITUMINOUS MATERIALS (TACK COAT)	POLYMERIZED HMA SURFACE COURSE, IL-9.5 MIX "D", N70	HMA SURFACE COURSE, IL-9.5L MIX "C", N30 (SHOULDER)
FROM	TO	LENGTH	WIDTH					
		FEET	FEET	SQ YD	FEET	POUND	TON	TON
0532+12.0	0535+95.0	383	50	2383	766	958	179	22
0535+95.0	0573+16.2	3721	36	18193	7442	6698	1251	278

TEMPORARY RAMP SCHEDULE

CL OF ENTRANCE OR SIDEROAD	LOCATION	LENGTH	WIDTH	TEMPORARY RAMP	REMARKS
		FEET	FEET	SQ YD	
0532+12.0		5	60	34	BEGIN PROJECT
0562+18.6	LT	1.5	60	10	TEXAS BLVD.
0573+16.2		5	36	20	END PROJECT
TOTAL				64	

PIPE SCHEDULE

LOCATION	PIPE CULVERTS CLASS D, TYPE 1 18"	STONE RIPRAP CLASS B3 ONLY AT END SECTIONS	FILTER FABRIC	STEEL FLARED END SECTIONS 18"	EARTH EXCAVATION	TRENCH BACKFILL	AGGREGATE BASE COURSE TYPE B 6"	PIPE CULVERT REMOVAL
554+45 (RT)	30	3	7	2	5	11	10	22
568+37 (RT)	62	3	14	2	13	16	21	54
TOTAL	92	6	20	4	18	27	31	76

AGGREGATE WEDGE SHOULDER , TYPE B

STATION		AVE DEPTH	LENGTH	WIDTH	AGGREGATE WEDGE SHOULDER, TYPE B
FROM	TO	INCH	FEET	FEET	TON
0532+12.0	0535+95.0	2	383.0	3	30
TOTAL					30

PATCHING SCHEDULE

PATCH NO.	STATION	LANE	LENGTH	WIDTH	AREA	CLASS B PATCHES	CLASS D PATCHES	DOWEL BARS 1 1/2"	SAW CUTS
						12 INCH	12 INCH		
						TYPE II	TYPE I		
			FEET	FEET	SQ YD	SQ YD	SQ YD	EACH	FOOT
1	0541+69.0	WB	8	12	11	11		12	20
2	0541+69.0	C	8	12	11	11		12	20
3	0541+69.0	EB	8	12	11	11		12	20
4	0535+00.0	WB Shoulder	10	3	3.33		4	0	13
SUBTOTAL						32.0	4.0	36	73
15% ANTICIPATED FAILURES						5	1	6	11
TOTAL						37	5	42	84

BUS PAD SCHEDULE

LOCATION	DIMENSION		PORTLAND CEMENT CONCRETE SIDEWALK 4 INCH	AGGREGATE BASE COURSE, TYPE B 6"	POLYMERIZED HMA SURFACE COURSE IL-9.5 MIX "D" N70	HMA BINDER COURSE IL-19.0, N70	DRIVEWAY PAVEMENT REMOVAL
	LENGTH	WIDTH					
	FEET	FEET					
554+45 (RT)	8	5	40	5	0	0	0
568+37 (RT)	8	5	40	5	2	2	24
TOTAL	16	10	80	10	2	2	24

NOTE: SEE LOCATION MAP FOR APPROXIMATE BUS PAD LOCATIONS

MODEL - Schedule of Quantities (Sheet)
FILE NAME: c:\pwworking\1016661\10876145-sh-schedule.dgn

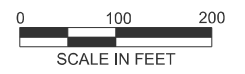
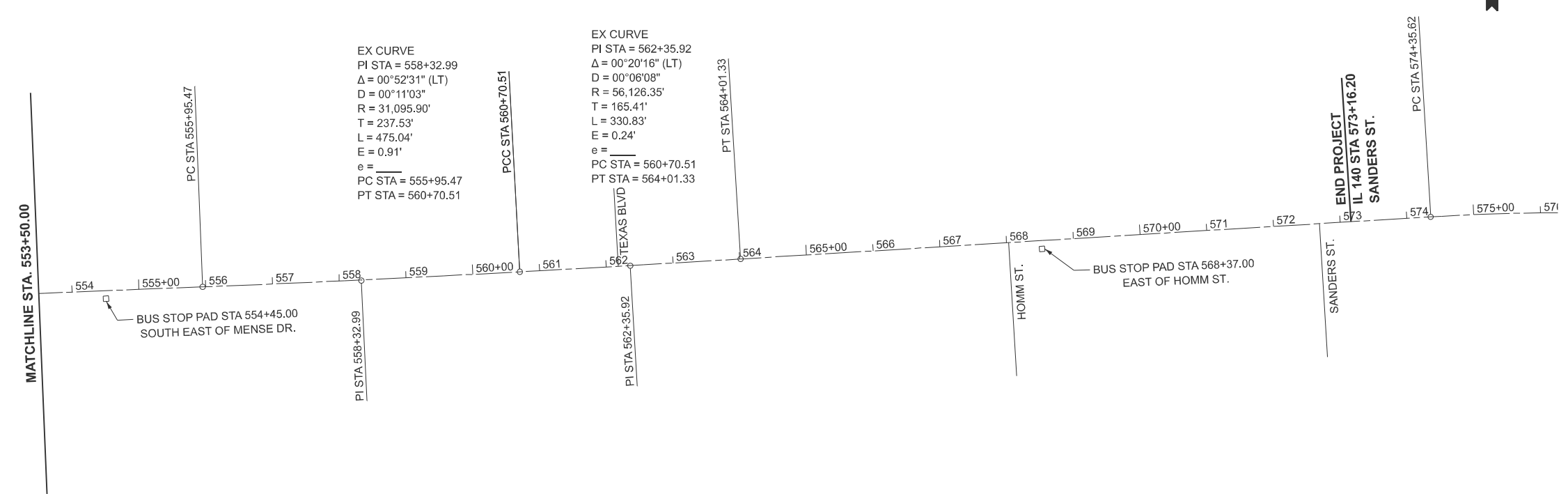
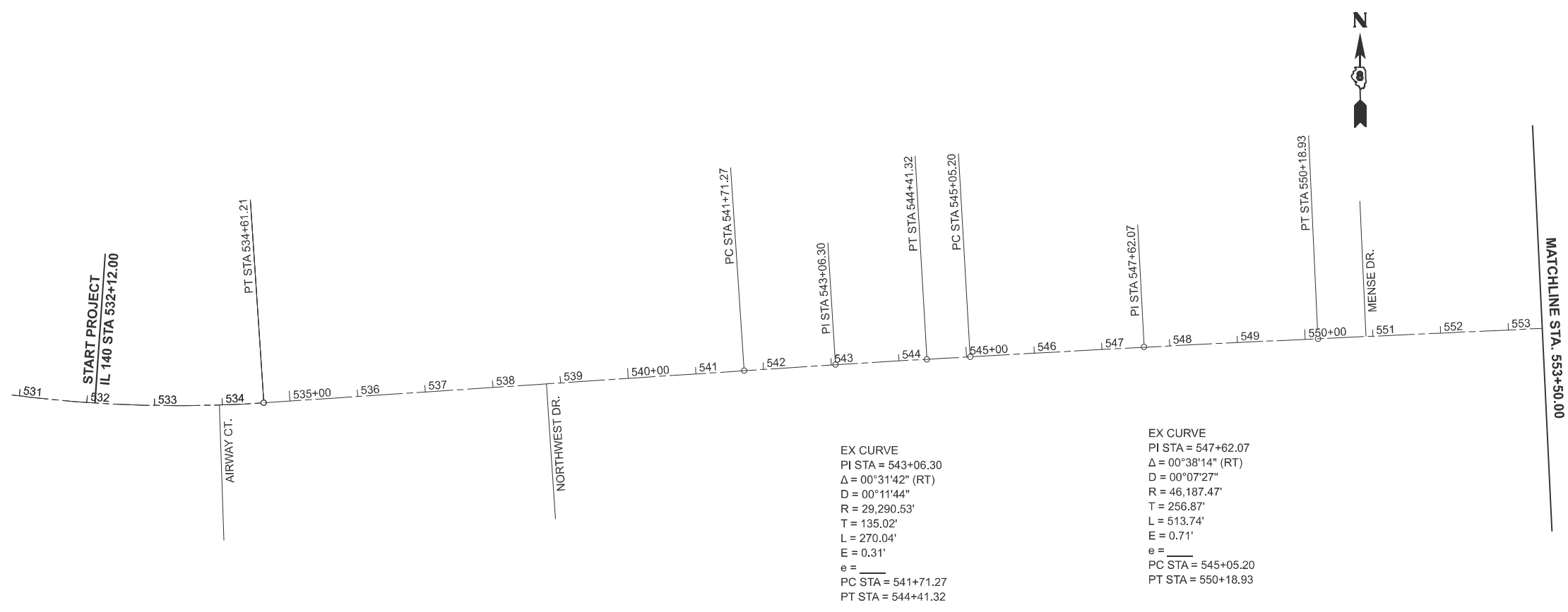
USER NAME = michael.berg	DESIGNED -	REVISED -
	DRAWN -	REVISED -
	CHECKED -	REVISED -
PLOT DATE = 10/25/2024	DATE -	REVISED -

STATE OF ILLINOIS
DEPARTMENT OF TRANSPORTATION

SCHEDULE OF QUANTITIES

SCALE: SHEET 1 OF 1 SHEETS STA. TO STA.

F.A.P. RTE.	SECTION	COUNTY	TOTAL SHEETS	SHEET NO.
785	133RS-7	MADISON	10	7
CONTRACT NO. 76L46				
ILLINOIS FED. AID PROJECT				



MODEL: IL 140 - Location Map (Sheet)
 FILE NAME: c:\p\work\140\illinois.gov\1016651\08761_45-sh-clan.dgn

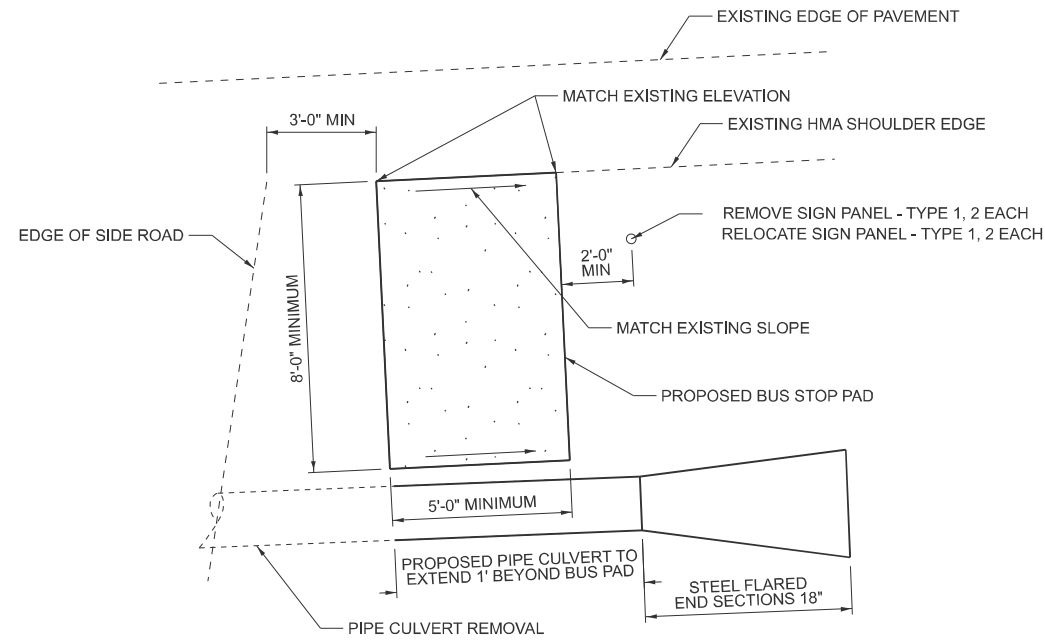
USER NAME = joshua.huffstutter	DESIGNED -	REVISED -
	DRAWN -	REVISED -
	CHECKED -	REVISED -
PLOT DATE = 9/26/2024	DATE -	REVISED -

**STATE OF ILLINOIS
 DEPARTMENT OF TRANSPORTATION**

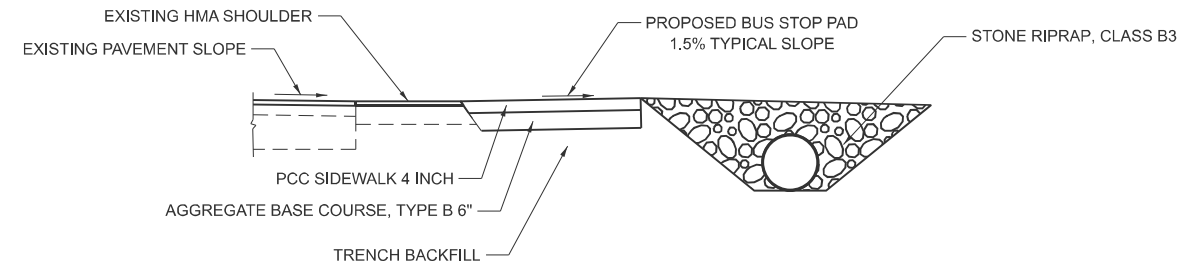
LOCATION MAP

SCALE: 1"=100' SHEET 1 OF 1 SHEETS STA. 525+00.00 TO STA. 574+00.00

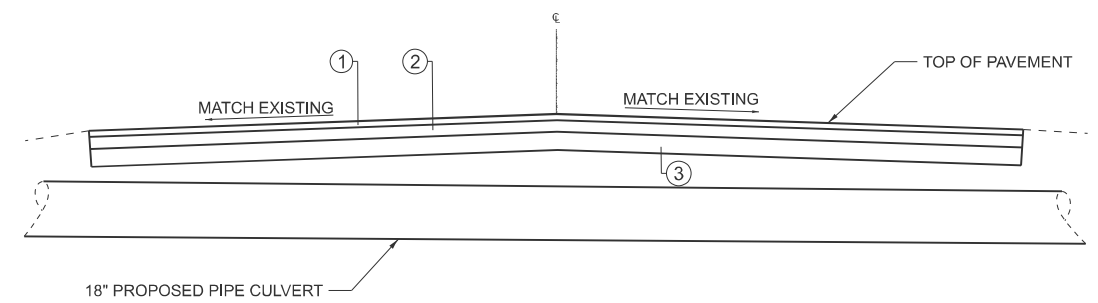
F.A.P. RTE.	SECTION	COUNTY	TOTAL SHEETS	SHEET NO.
785	133RS-7	MADISON	10	8
CONTRACT NO. 76L46				
ILLINOIS FED. AID PROJECT				



BUS STOP PLAN



BUS STOP SECTION



LEGEND

- ① 2" POLMERIZED HMA SURFACE COURSE, IL-9.5, MIX "D", N70
- ② 4" HMA BINDER COURSE, IL-19.0, N70
- ③ AGGREGATE BASE COURSE, TYPE B 6"

STA 568+37 HOMM STREET SECTION

NOTE: STA 554+45 PIPE REPLACEMENT SIMILAR WITHOUT PAVEMENT

MODEL: Bus Stop - Typical (Sheet)
FILE NAME: c:\p\work\project\bergmdd1016661\0876145-sh-Bus Stop Typical.dgn

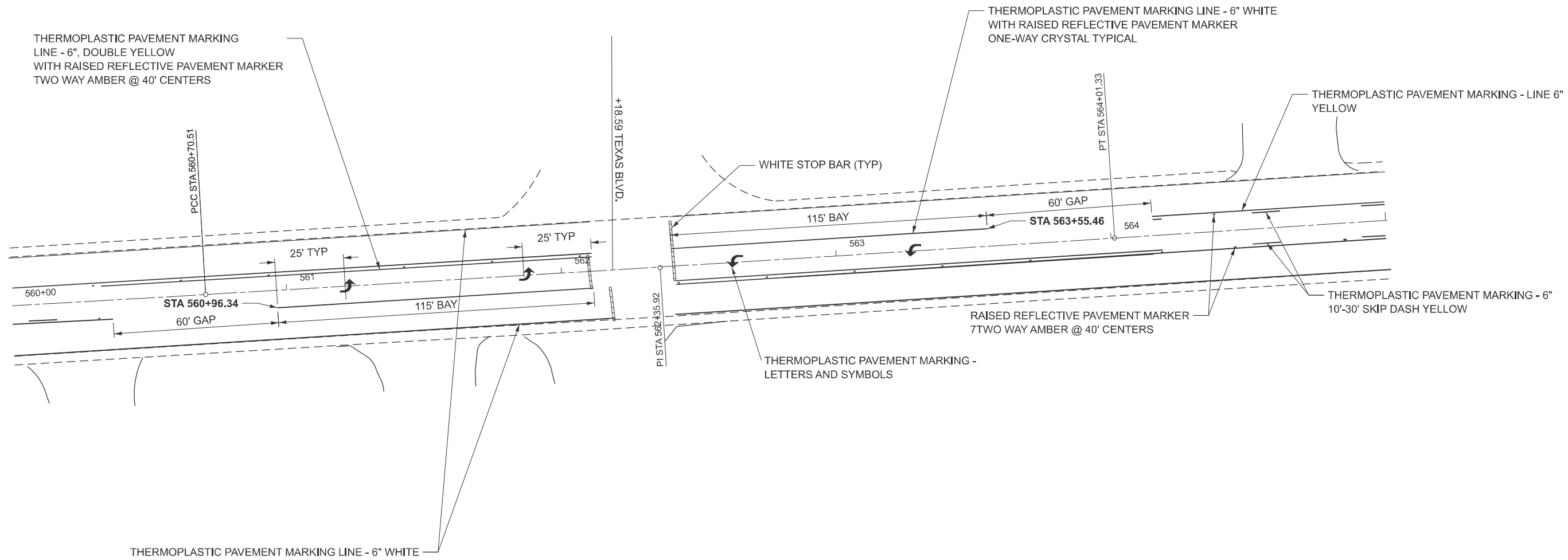
USER NAME = michael.berg	DESIGNED -	REVISED -
	DRAWN -	REVISED -
	CHECKED -	REVISED -
PLOT DATE = 10/25/2024	DATE -	REVISED -

**STATE OF ILLINOIS
DEPARTMENT OF TRANSPORTATION**

BUS STOP & CMP - DETAILS

SCALE: SHEET OF SHEETS STA. TO STA.

F.A.P. RTE.	SECTION	COUNTY	TOTAL SHEETS	SHEET NO.
785	133RS-7	MADISON	10	9
CONTRACT NO. 76L46				
ILLINOIS FED. AID PROJECT				



MODEL: Pavement Marking Plan (Sheet)
 FILE NAME: c:\p\work\pav\133rs\76L46-sh-rmk.dgn

USER NAME = michael.berg	DESIGNED -	REVISED -
	DRAWN -	REVISED -
	CHECKED -	REVISED -
PLOT DATE = 10/25/2024	DATE -	REVISED -

STATE OF ILLINOIS
DEPARTMENT OF TRANSPORTATION

TEXAS BLVD.
PAVEMENT MARKING SHEET

F.A.P. RTE.	SECTION	COUNTY	TOTAL SHEETS	SHEET NO.
785	133RS-7	MADISON	10	10
CONTRACT NO. 76L46				
ILLINOIS FED. AID PROJECT				

SCALE: SHEET 1 OF 1 SHEETS STA. TO STA.