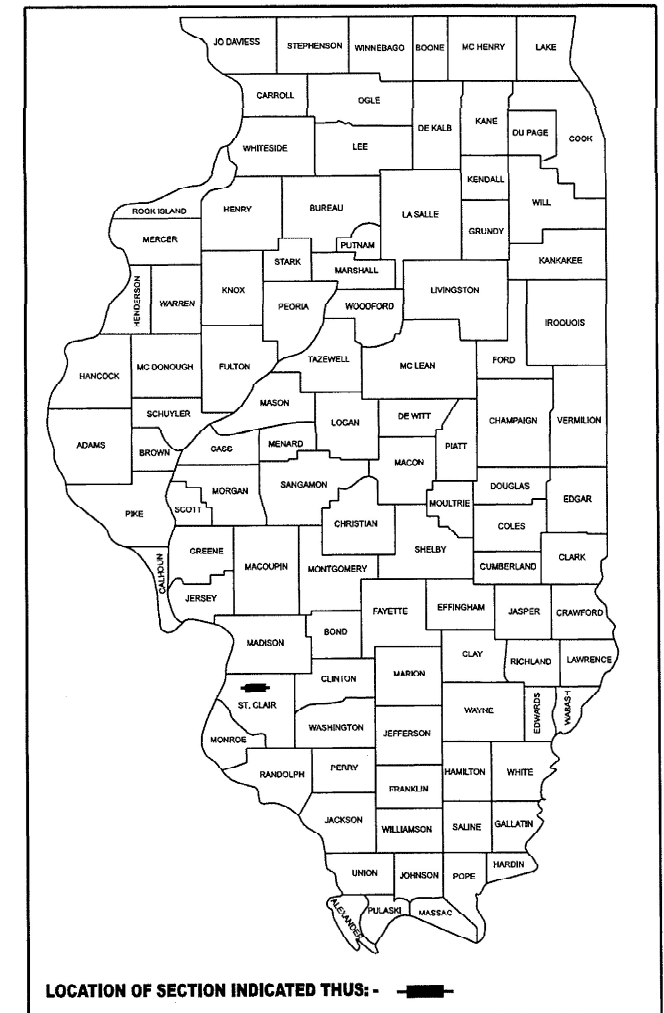


STATE OF ILLINOIS
DEPARTMENT OF TRANSPORTATION

F.A.U. RTE.	SECTION	COUNTY	TOTAL SHEETS	SHEET NO.
9257	(122-1,2)PP	ST. CLAIR	7	1
		ILLINOIS	CONTRACT NO. 76M34	

D-98-095-24



PROPOSED HIGHWAY PLANS

FAU ROUTE 9257 (N. BELT WEST)
SECTION (122-1,2)PP
PATCHING - CM
ST. CLAIR COUNTY

C-98-181-24

FOR INDEX OF SHEETS, SEE SHEET NO. 2

TRAFFIC DATA: W. MAIN TO 17TH ST.

LOCATION	N. BELT WEST
2024 ADT:	14400 (ACTUAL)
2044 ADT:	16600 (ESTIMATED)
MU%	1.4
SU%	3.8

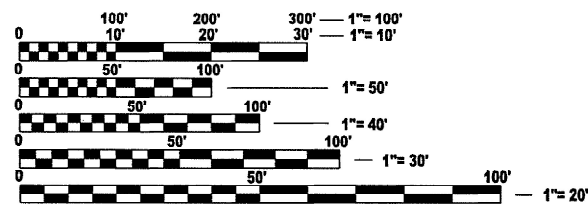
TRAFFIC DATA: 17TH ST. TO CASEYVILLE AVE.

LOCATION	N. BELT WEST
2024 ADT:	11300 (ACTUAL)
2044 ADT:	13000 (ESTIMATED)
MU%	2.0
SU%	4.2

FUNCTIONAL CLASSIFICATION: MINOR ARTERIAL

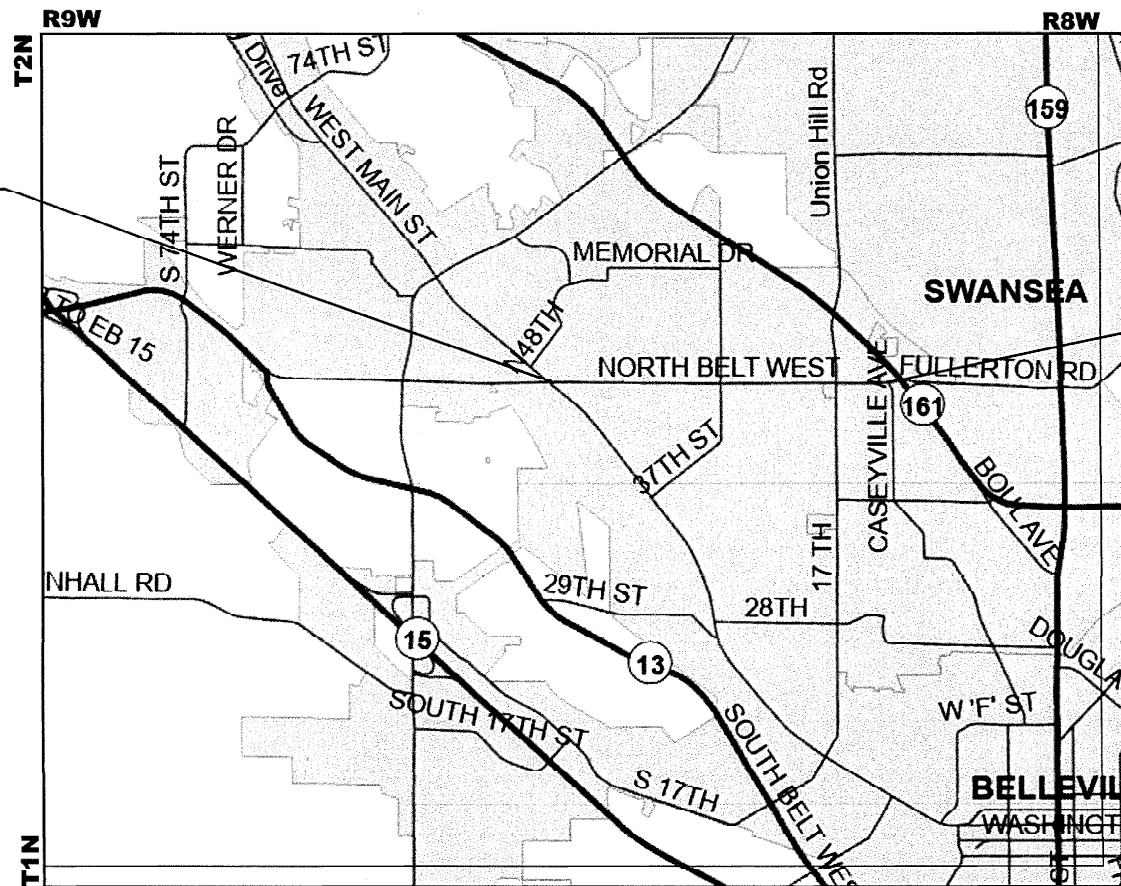
BEGIN PROJECT:
(WEST MAIN ST.)
STA: 177+66
LAT: 38.541618
LONG: -90.025019

END PROJECT:
(CASEYVILLE AVE.)
STA: 258+97
LAT: 38.541540
LONG: -89.997513



FULL SIZE PLANS HAVE BEEN PREPARED USING STANDARD ENGINEERING SCALES. REDUCED SIZED PLANS WILL NOT CONFORM TO STANDARD SCALES. IN MAKING MEASUREMENTS ON REDUCED PLANS, THE ABOVE SCALES MAY BE USED.

J.U.L.I.E.
JOINT UTILITY LOCATION INFORMATION FOR EXCAVATION
1-800-892-0123
OR 811



GROSS LENGTH = 8,131 FT. = 1.54 MILE
NET LENGTH = 8,131 FT. = 1.54 MILE

PROJECT ENGINEER: BILLIE OWEN
PROJECT MANAGER: MIKE BERG

CONTRACT NO. 76M34

STATE OF ILLINOIS
DEPARTMENT OF TRANSPORTATION

SUBMITTED Oct 24 2024
Kul H B
REGIONAL ENGINEER

December 6, 2024
Sac E. A. etc
ENGINEER OF DESIGN AND ENVIRONMENT

December 6, 2024
James J. etc
DIRECTOR OF HIGHWAYS PROJECT IMPLEMENTATION

PRINTED BY THE AUTHORITY
OF THE STATE OF ILLINOIS

INDEX OF SHEETS

1. COVER SHEET
2. INDEX OF SHEETS, HIGHWAY STANDARDS, GENERAL NOTES AND COMMITMENTS
3. SUMMARY OF QUANTITIES
4. TYPICAL SECTION
- 5-6. SCHEDULE OF QUANTITIES
7. LOCATION MAP

HIGHWAY STANDARDS

000001-08	STANDARDS SYMBOLS ABBREVIATIONS & PATTERNS
001001-02	ARES OF REINFORCEMENT BARS
001006	DECIMAL OF INCH & FOOT
420001-10	PAVEMENT JOINTS
420701-03	PAVEMENT WELDED WIRE REINFORCEMENT
442101-09	CLASS B PATCHES
701006-05	OFF ROAD OPERATIONS, 2L, 2W, 15' TO 24" FROM PAVEMENT EDGE
701602-10	URBAN LANE CLOSURE, 2L, 2W, WITH BIDIRECTIONAL LEFT TURN LANE
701701-10	URBAN LANE CLOSURE, MULTILANE, 2W WITH BIDIRECTIONAL LEFT TURN
701901-10	LANE TRAFFIC CONTROL DEVICES
780001-05	TYPICAL PAVEMENT MARKINGS
781001-04	TYPICAL APPLICATION RAISED REFLECTION PAVEMENT MARKERS

GENERAL NOTES

1. UTILITIES KNOWN TO HAVE FACILITIES WITHIN THE PROJECT AREAS

		AERIAL	BURIED
AMEREN ILLINOIS	(GAS & ELECTRIC)	X	X
AT&T ILLINOIS	(COMMUNICATIONS)	X	X
CITY OF BELLEVILLE	(SANITARY SEWER)		X
CHARTER COMMUNICATIONS, INC	(CABLE TV)	X	X
CLEARWAVE FIBER LLC	(COMMUNICATIONS)	X	X
EVERSTREAM GLC HOLDING COMPANY LLC	(WATER, SANITARY SEWER)	X	X
FIDELITY COMMUNICATIONS III, INC	(COMMUNICATIONS)	X	X
ILLINOIS AMERICAN WATER COMPANY	(WATER)		X
VERIZON BUISNESS	(COMMUNICATIONS)	X	X
WINDSTREAM KDL, INC.	(COMMUNICATIONS)	X	X

2. NO SURVEY WAS REFORMED FOR THIS PROJECT AND THE PLANS WERE CREATED USING MICROFILM AND FIELD MEASUREMENTS.

3. THE RESIDENT ENGINEER SHALL VERIFY THE EXISTENCE OF HIGHWAY LIGHTING, INTELLIGENT TRANSPORTATION SYSTEMS (I.T.S.) UTILITIES, AND/OR ELECTRICAL CABLES ASSOCIATED WITH TRAFFIC SIGNALS WITHIN THE PROJECT LIMITS. IF ANY OF THESE EXIST WITHIN THE PROJECT LIMITS, AND IF THESE ITEMS REQUIRE LOCATING, THE CONTRACTOR SHALL BE DIRECTED TO DO SO ACCORDING TO SECTION 803 OF THE STANDARD SPECIFICATIONS. THIS WORK SHALL BE PAID FOR ACCORDING TO ARTICLE 109.04 OF THE STANDARD SPECIFICATIONS.

4. ALL TURF AREAS DISTURBED BY THE CONTRACTOR SHALL BE SEEDED WITH THE APPROPRIATE EROSION CONTROL, AS DIRECTED BY THE ENGINEER, AT THE CONTRACTOR'S EXPENSE.

5. THE PROPOSED PAVEMENT MARKING SHALL MATCH THE LOCATIONS OF THE EXISTING PAVEMENT MARKING, AS DIRECTED BY THE ENGINEER.

6. TWO CHANGEABLE MESSAGE SIGNS SHALL BE PROVIDED ALONG NORTH BELT WEST TO ALERT DRIVERS OF THE UPCOMING ROAD CONSTRUCTION. CHANGEABLE MESSAGE SIGNS SHALL BE PLACED 14 DAYS PRIOR TO BEGINNING WORK AND SHALL REMAIN FOR THE DURATION OF THE PROJECT. EXACT LOCATIONS OF THE CHANGEABLE MESSAGE SIGNS SHALL BE DETERMINED BY THE ENGINEER.

7. NO OVERNIGHT LANE CLOSURE WILL BE ALLOWED.

8. THE CONTRACTOR SHALL BE ALLOWED TO USE HIGH EARLY STRENGTH CONCRETE FOR THE PATCHING AS DIRECTED BY THE ENGINEER.

9. THE DEPARTMENT STRONGLY ENCOURAGES THE PRIME CONTRACTOR AND THEIR APPROVED SUB-CONTRACTORS TO HIRE MINORITY, WOMEN AND DISADVANTAGED INDIVIDUALS FROM ITS FEDERALLY FUNDED HIGHWAY CONSTRUCTION CAREERS TRAINING PROGRAM (HCCTP) TO HELP MEET WORKFORCE AND TRAINEE GOALS. THIS PROGRAM IS TRAINING MINORITIES, WOMEN AND DISADVANTAGED INDIVIDUALS IN HIGHWAY CONSTRUCTION-RELATED SKILLS, E.G., MATH FOR THE TRADES, JOB READINESS, TECHNICAL SKILLS COURSEWORK (CARPENTRY, CONCRETE FLATWORK, BLUEPRINT READING, SITE PLANS, SITE WORK, TOOLS USE, ETC.) AND OSHA 10 HOUR CERTIFICATION, TO PREPARE THEM FOR A CAREER IN THE HIGHWAY CONSTRUCTION TRADES. GRADUATES ARE WELL-TRAINED AND READY TO BECOME PRODUCTIVE ENTRY-LEVEL CONSTRUCTION WORKERS. CONTACT THE DISTRICT 8 EEO OFFICE AT 618-346-3360 AND/OR THE HCCTP COORDINATOR AT 618-874-6528 TO LEARN MORE ABOUT THE PROGRAM AND FOR ASSISTANCE IN MEETING WORKFORCE AND TRAINEE GOALS.

COMMITMENTS

NONE

**STATE OF ILLINOIS
DEPARTMENT OF TRANSPORTATION**

**INDEX OF SHEETS, HIGHWAY STANDARDS,
GENERAL NOTES, COMMITMENTS**

FAU RTE.	SECTION	COUNTY	TOTAL SHEETS	SHEET NO.
9257	(122-1,2)PP	ST. CLAIR	7	2
CONTRACT NO. 76M34				
ILLINOIS FED. AID PROJECT				

SCALE: SHEET 1 OF 1 SHEETS STA. TO STA.

REV - MS

MODEL: General Notes (Sheet)
FILE NAME: c:\pwworking\millerrald101592910\676M34-4-11-19\gennote.dgn

USER NAME = rahshun.miller	DESIGNED -	REVISED -
	DRAWN -	REVISED -
	CHECKED -	REVISED -
PLOT DATE = 10/22/2024	DATE -	REVISED -

100% STATE

CODE NO.	ITEM	UNIT	TOTAL QUANTITY	CONSTR. CODE	
				ROADWAY 0006	URBAN
44200050	WELDED WIRE REINFORCEMENT	SQ YD	389	389	
44200994	CLASS B PATCHES, TYPE II, 12 INCH	SQ YD	440	440	
44200998	CLASS B PATCHES, TYPE III, 12 INCH	SQ YD	315	315	
44201000	CLASS B PATCHES, TYPE IV, 12 INCH	SQ YD	73	73	
44201299	DOWEL BARS 1 1/2"	EACH	1188	1188	
44213200	SAW CUTS	FOOT	4241	4241	
44213204	TIE BARS 3/4"	EACH	18	18	
67100100	MOBILIZATION	L SUM	1	1	
70102632	TRAFFIC CONTROL AND PROTECTION, STANDARD 701602	L SUM	1	1	
70102635	TRAFFIC CONTROL AND PROTECTION, STANDARD 701701	L SUM	1	1	
70107025	CHANGEABLE MESSAGE SIGN	CAL DA	90	90	
* 78001110	PAINT PAVEMENT MARKING - LINE 4"	FOOT	2260	2260	
* 78100100	RAISED REFLECTIVE PAVEMENT MARKER	EACH	30	30	

* SPECIALTY ITEM

MODEL: SOQ (Sheet)
FILE NAME: c:\p\work\pav\miller\ra1015929\0876\34-4-shr-SOQ.dgn

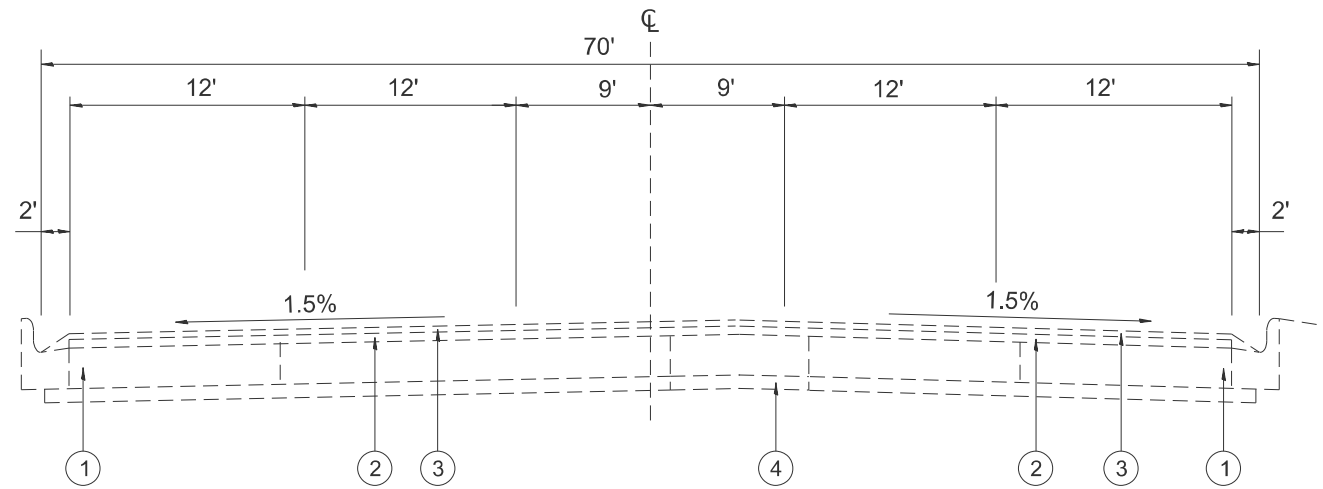
USER NAME = rahshun.miller	DESIGNED -	REVISED -
	DRAWN -	REVISED -
	CHECKED -	REVISED -
PLOT DATE = 8/28/2024	DATE -	REVISED -

STATE OF ILLINOIS
DEPARTMENT OF TRANSPORTATION

SUMMARY OF QUANTITIES

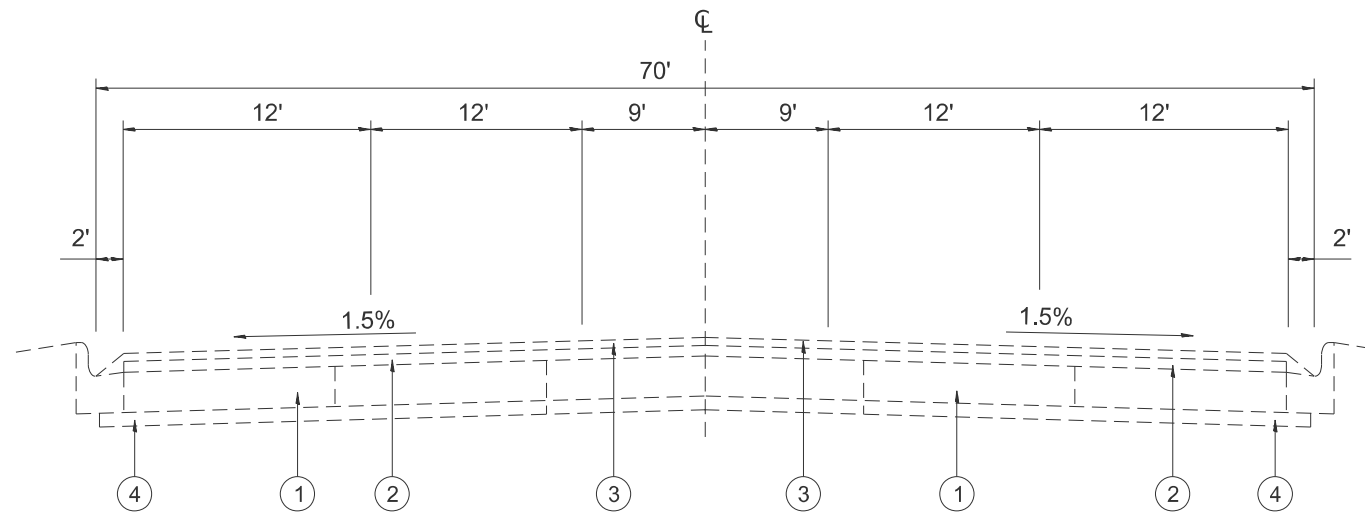
SCALE: 50 SHEET 1 OF 1 SHEETS STA. TO STA.

F.A.U. RTE.	SECTION	COUNTY	TOTAL SHEETS	SHEET NO.
9257	(122-1,2)PP	ST. CLAIR	7	3
CONTRACT NO. 76M34			ILLINOIS FED. AID PROJECT	



EXISTING TYPICAL SECTION

STA. 177+66 TO STA. 197+95



EXISTING TYPICAL SECTION

STA. 197+95 TO STA. 258+97

- ① EXISTING PCC PAVEMENT 10"
- ② EXISTING LEVELING BINDER 1"
- ③ EXISTING POLY-HMA SURFACE COURSE, MIX D, 1 1/4"
- ④ EXISTING SUB-BASE GRANULAR MATERIAL, TYPE A., 4"

MODEL: Typical (Sheet)
 FILE NAME: c:\p\work\pav\miller\rajd1015929\0876\34-shr-typical.dgn

USER NAME = rahshun.miller	DESIGNED -	REVISED -
	DRAWN -	REVISED -
	CHECKED -	REVISED -
PLOT DATE = 10/22/2024	DATE -	REVISED -

**STATE OF ILLINOIS
DEPARTMENT OF TRANSPORTATION**

SCALE: 50 SHEET 1 OF 1 SHEETS STA. TO STA.

TYPICAL SECTION

F.A.U. RTE.	SECTION	COUNTY	TOTAL SHEETS	SHEET NO.
9257	(122-1,2)PP	ST. CLAIR	7	4
CONTRACT NO. 76M34			ILLINOIS FED. AID PROJECT	

CLASS B PATCHING SCHEDULE 12" (EASTBOUND)

STATION	LANE DRIVE/PASS/BI DIRECTIONAL	LENGTH	WIDTH	TYPE II	TYPE III	TYPE IV	DOWEL BARS	TIE BAR	WELDED WIRE REINFORCEMENT	SAW CUTS
		FOOT	FOOT	SQ YDS	SQ YDS	SQ YDS	EACH	EACH	SQ YDS	FOOT
183+66	EBPL	6	12	8.0	0.0	0.0	18	0	0.0	54
183+66	EBDL	6	12	8.0	0.0	0.0	18	0	0.0	54
188+06	EBPL	6	12	8.0	0.0	0.0	18	0	0.0	54
188+06	EBDL	6	12	8.0	0.0	0.0	18	0	0.0	54
196+43	EBPL	6	12	8.0	0.0	0.0	18	0	0.0	54
196+43	EPDL	6	12	8.0	0.0	0.0	18	0	0.0	54
196+82	EBPL	8	12	10.7	0.0	0.0	18	0	0.0	60
196+82	EBDL	15	12	0.0	20.0	0.0	18	0	20.0	81
200+77	EBPL	8	12	10.7	0.0	0.0	18	0	0.0	60
200+77	EBDL	8	12	10.7	0.0	0.0	18	0	0.0	60
207+50	EBPL	6	12	8.0	0.0	0.0	18	0	0.0	54
207+50	EBDL	6	12	8.0	0.0	0.0	18	0	0.0	54
211+63	EBPL	12	12	0.0	16.0	0.0	18	0	16.0	72
211+63	EBDL	12	12	0.0	16.0	0.0	18	0	16.0	72
216+42	EBPL	6	12	8.0	0.0	0.0	18	0	0.0	54
216+42	EBDL	6	12	8.0	0.0	0.0	18	0	0.0	54
217+89	EBPL	8	12	10.7	0.0	0.0	18	0	0.0	60
217+89	EBDL	8	12	10.7	0.0	0.0	18	0	0.0	60
217+89	BI-DIR	8	12	10.7	0.0	0.0	18	0	0.0	60
217+89	BI-DIR	8	12	10.7	0.0	0.0	18	0	0.0	60
220+77	EBPL	15	12	0.0	20.0	0.0	18	0	20.0	81
220+77	EBDL	15	12	0.0	20.0	0.0	18	0	20.0	81
232+57	EBDL	15	12	0.0	20.0	0.0	18	0	20.0	81
232+57	EBPL	15	12	0.0	20.0	0.0	18	0	20.0	81
235+74	EBPL	15	12	0.0	20.0	0.0	18	0	20.0	81
235+74	EBDL	15	12	0.0	20.0	0.0	18	0	20.0	81
239+43	EBPL	6	12	8.0	0.0	0.0	18	0	0.0	54
239+43	EBDL	6	12	8.0	0.0	0.0	18	0	0.0	54
246+30	EBDL	6	12	8.0	0.0	0.0	18	0	0.0	54
246+30	EBPL	6	12	8.0	0.0	0.0	18	0	0.0	54
252+11	EBDL	6	12	8.0	0.0	0.0	18	0	0.0	54
252+11	EBPL	6	12	8.0	0.0	0.0	18	0	0.0	54
256+33	EBDL	6	12	8.0	0.0	0.0	18	0	0.0	54
256+33	EBPL	6	12	8.0	0.0	0.0	18	0	0.0	54
EASTBOUND SUB TOTAL :				219	172	0	612	0	172	2103

MODEL: Schedule of Quantities (Sheet)
FILE NAME: c:\p\work\evtdom\miller\1015929\0876\34-eh-schedule.dgn

USER NAME = rahshun.miller
PLOT DATE = 10/23/2024

DESIGNED -
DRAWN -
CHECKED -
DATE -

REVISED -
REVISED -
REVISED -
REVISED -

**STATE OF ILLINOIS
DEPARTMENT OF TRANSPORTATION**

SCHEDULE OF QUANTITIES

SCALE: SHEET 1 OF 2 SHEETS STA. TO STA.

F.A.U RTE.	SECTION	COUNTY	TOTAL SHEETS	SHEET NO.
9257	(122-1,2)PP	ST. CLAIR	7	5
CONTRACT NO. 76M34				
ILLINOIS FED. AID PROJECT				

CLASS B PATCHING SCHEDULE 12" (WESTBOUND)

STATION	LANE DRIVE/PASS	LENGTH	WIDTH	TYPE II	TYPE III	TYPE IV	DOWEL BARS	TIE BAR	WELDED WIRE REINFORCEMENT	SAW CUTS
		FOOT	FOOT	SQ YDS	SQ YDS	SQ YDS	EACH	EACH	SQ YDS	FOOT
196+43	WBDL	8	12	10.7	0.0	0.0	18.0	0.0	0.0	60.0
196+43	WBPL	15	12	0.0	20.0	0.0	18.0	0.0	20.0	81.0
196+82	WBDL	6	12	8.0	0.0	0.0	18.0	0.0	0.0	54.0
196+82	WBPL	6	12	8.0	0.0	0.0	18.0	0.0	0.0	54.0
198+54	WBDL	6	12	8.0	0.0	0.0	18.0	0.0	0.0	54.0
198+54	WBPL	6	12	8.0	0.0	0.0	18.0	0.0	0.0	54.0
200+77	WBDL	8	12	10.7	0.0	0.0	18.0	0.0	0.0	60.0
200+77	WBPL	8	12	10.7	0.0	0.0	18.0	0.0	0.0	60.0
207+50	WBDL	12	12	0.0	16.0	0.0	18.0	0.0	16.0	72.0
207+50	WBPL	15	12	0.0	20.0	0.0	18.0	0.0	20.0	81.0
211+63	WBDL	50	12	0.0	0.0	66.7	18.0	16.7	66.7	186.0
211+63	WBPL	14	12	0.0	18.7	0.0	18.0	0.0	18.7	78.0
216+42	WBDL	6	12	8.0	0.0	0.0	18.0	0.0	0.0	54.0
216+42	WBPL	6	12	8.0	0.0	0.0	18.0	0.0	0.0	54.0
217+89	WBDL	6	12	8.0	0.0	0.0	18.0	0.0	0.0	54.0
217+89	WBPL	6	12	8.0	0.0	0.0	18.0	0.0	0.0	54.0
217+89	WBDL	8	12	10.7	0.0	0.0	18.0	0.0	0.0	60.0
217+89	WBPL	8	12	10.7	0.0	0.0	18.0	0.0	0.0	60.0
220+77	WBDL	15	12	0.0	20.0	0.0	18.0	0.0	20.0	81.0
220+77	WBPL	15	12	0.0	20.0	0.0	18.0	0.0	20.0	81.0
232+57	WBDL	10	12	13.3	0.0	0.0	18.0	0.0	0.0	66.0
232+57	WBPL	10	12	13.3	0.0	0.0	18.0	0.0	0.0	66.0
235+74	WBDL	8	12	10.7	0.0	0.0	18.0	0.0	0.0	60.0
235+74	WBPL	8	12	10.7	0.0	0.0	18.0	0.0	0.0	60.0
256+33	WBDL	6	12	8.0	0.0	0.0	18.0	0.0	0.0	54.0
256+33	WBPL	6	12	8.0	0.0	0.0	18.0	0.0	0.0	54.0
WESTBOUND SUB TOTAL :				181.3	114.7	66.7	468.0	16.7	181.3	1752.0

CLASS B PATCHING SCHEDULE 12" (EB/WB) TOTAL

STATION	LANE DRIVE/PASS	LENGTH	WIDTH	TYPE II	TYPE III	TYPE IV	DOWEL BARS	TIE BAR	WELDED WIRE REINFORCEMENT	SAW CUTS
		FOOT	FOOT	SQ YDS	SQ YDS	SQ YDS	EACH	EACH	SQ YDS	FOOT
EASTBOUND TOTAL :				218.7	172.0	0.0	612.0	0.0	172.0	2103.0
WESTBOUND TOTAL :				181.3	114.7	66.7	468.0	16.7	181.3	1752.0
ANTICIPATED FAILURES :				40.0	28.7	6.7	108.0	1.7	35.3	385.5
TOTAL :				440	315	73	1188	18	389	4241

MODEL: Schedule of Quantities-2 (Sheet)
FILE NAME: c:\p\work\project\miller\rajd1015929\0876\34-eh-schedule.dgn

USER NAME = rahshun.miller	DESIGNED -	REVISED -
	DRAWN -	REVISED -
	CHECKED -	REVISED -
PLOT DATE = 10/23/2024	DATE -	REVISED -

**STATE OF ILLINOIS
DEPARTMENT OF TRANSPORTATION**

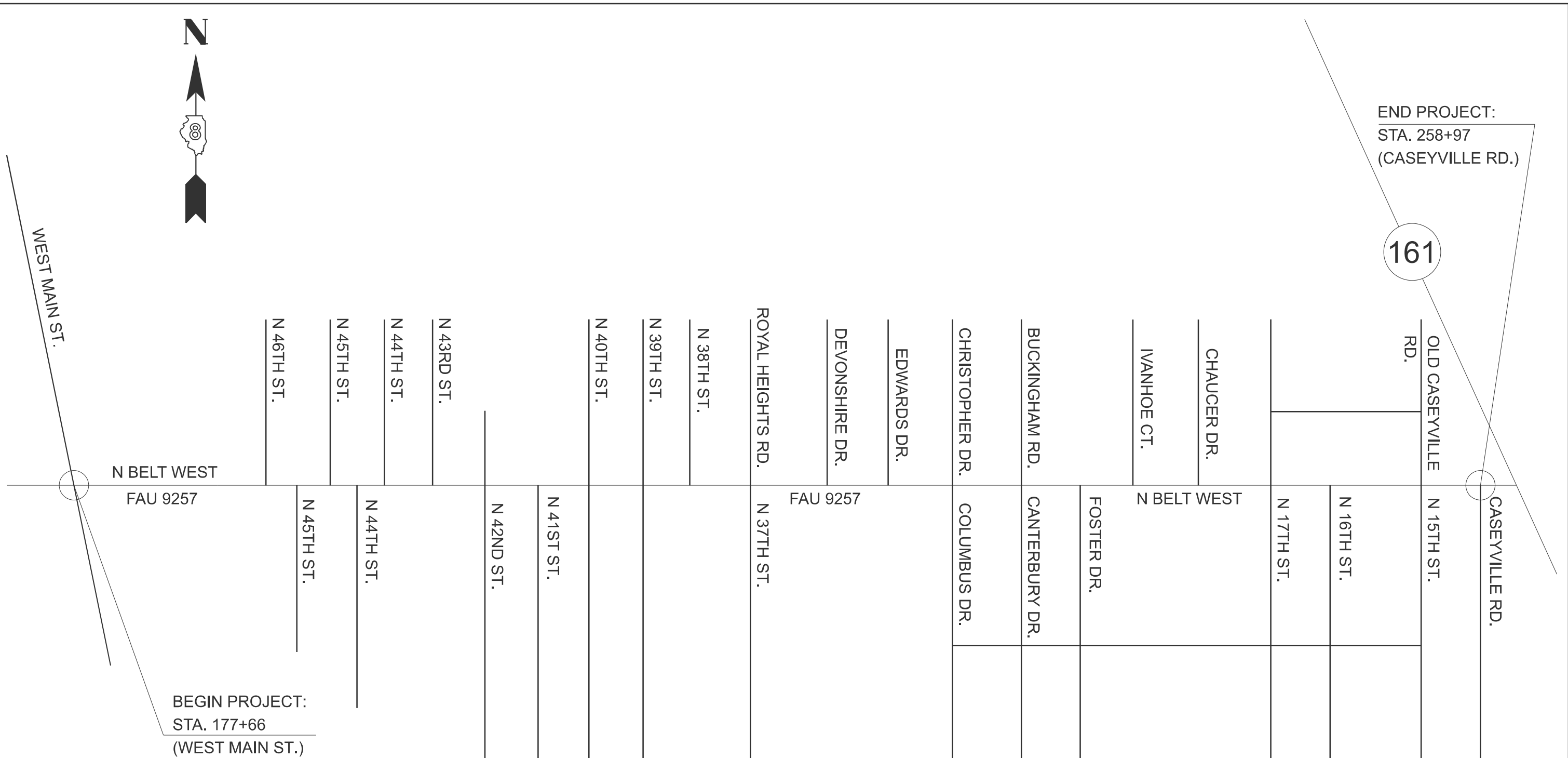
SCHEDULE OF QUANTITIES

SCALE: SHEET 2 OF 2 SHEETS STA. TO STA.

F.A.U. RTE.	SECTION	COUNTY	TOTAL SHEETS	SHEET NO.
9257	(122-1.2)PP	ST. CLAIR	7	6
CONTRACT NO. 76M34				
ILLINOIS FED. AID PROJECT				

END PROJECT:
 STA. 258+97
 (CASEYVILLE RD.)

161



BEGIN PROJECT:
 STA. 177+66
 (WEST MAIN ST.)

MODEL: Location Map (Sheet)
 FILE NAME: c:\p\work\rahshunmiller\rahd1015929\D876M37-shr-detail.dgn

USER NAME = rahshun.miller	DESIGNED -	REVISED -
	DRAWN -	REVISED -
	CHECKED -	REVISED -
PLOT DATE = 10/15/2024	DATE -	REVISED -

**STATE OF ILLINOIS
 DEPARTMENT OF TRANSPORTATION**

LOCATION MAP

SCALE: SHEET 1 OF 1 SHEETS STA. TO STA.

F.A.U. RTE.	SECTION	COUNTY	TOTAL SHEETS	SHEET NO.
9257	(122-1,2)PP	ST. CLAIR	7	7
CONTRACT NO. 76M34			ILLINOIS FED. AID PROJECT	