

STATE OF ILLINOIS  
DEPARTMENT OF TRANSPORTATION

F.A.P. RTE.	SECTION	COUNTY	TOTAL SHEETS	SHEET NO.
303	FAP 0303 22 RS	MCHENRY	26	1
		ILLINOIS	CONTRACT NO. 62R95	

# PROPOSED HIGHWAY PLANS

FAP ROUTE 303: ILL 173  
BOONE CO LINE TO FLAT IRON RD  
SECTION: FAP 0303 22 RS  
PROJECT: NHPP-5NDC(434)  
SMART OVERLAY, HMA SHOULDERS,  
ADA IMPROVEMENTS  
MCHENRY COUNTY

FOR INDEX OF SHEETS, SEE SHEET NO. 2

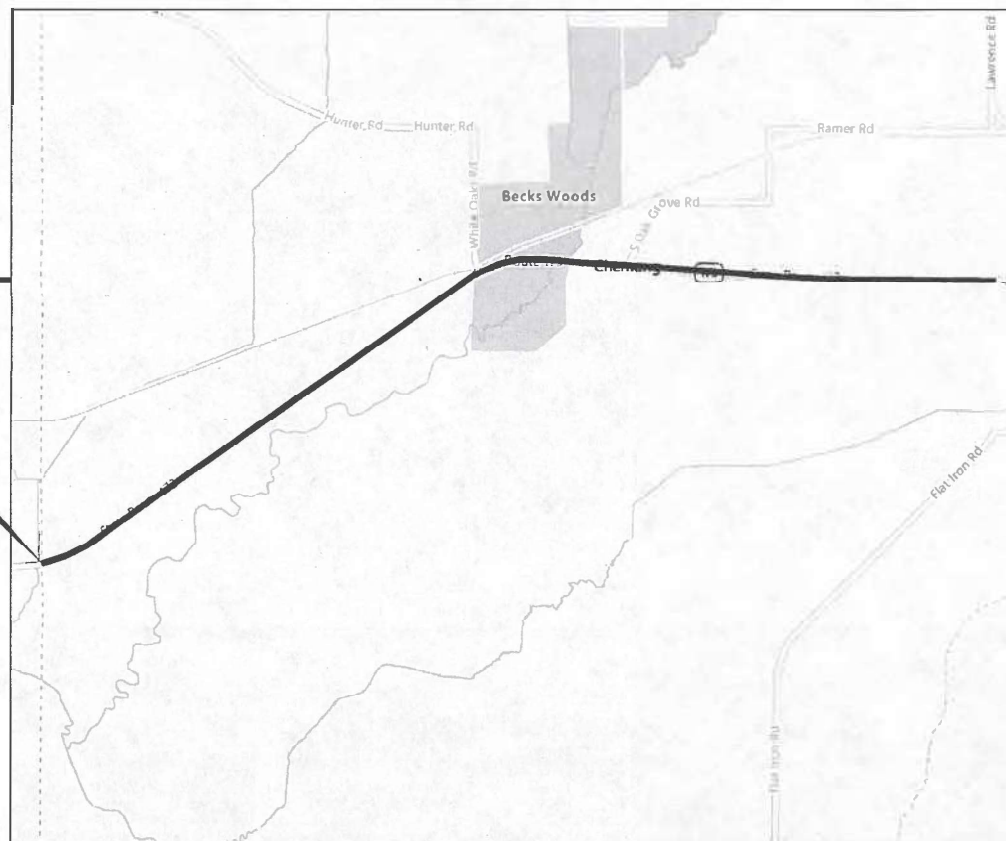
THE IMPROVEMENT IS LOCATED IN  
THE CITY OF HARVARD AND  
MUNICIPALITY OF CHEMUNG AND DUNHAM

TRAFFIC DATA:  
ILL- 171 ADT = 5850 (2023)  
POSTED SPEED LIMIT =35-55 MPH

DESIGN DESIGNATION:  
OTHER PRINCIPAL ARTERIAL

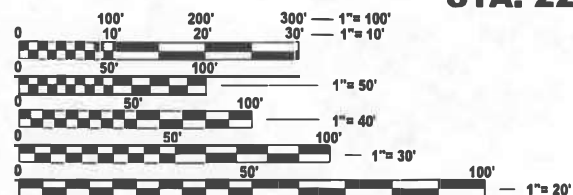
HMA OVERLAY OMISSION:  
STA. 108+31 TO STA. 117+41  
STA. 120+87 TO STA. 122+40  
STA. 130+20 TO STA. 132+66  
STA. 137+80 TO STA. 149+23

C-91-267-22  
R 5 E



IMPROVEMENT BEGINS  
STA. 22+11

IMPROVEMENT ENDS  
STA. 205+30



FULL SIZE PLANS HAVE BEEN PREPARED USING STANDARD ENGINEERING SCALES. REDUCED SIZED PLANS WILL NOT CONFORM TO STANDARD SCALES. IN MAKING MEASUREMENTS ON REDUCED PLANS, THE ABOVE SCALES MAY BE USED.

J.U.L.I.E.  
JOINT UTILITY LOCATION INFORMATION FOR EXCAVATION  
1-800-892-0123  
OR 811

PROJECT ENGINEER: LUKASZ POCIECHA (847) 705-4255  
PROJECT MANAGER: VESELIN VELICHKOV

CONTRACT NO. 62R95

CHEMUNG AND DUNHAM TOWNSHIP

GROSS LENGTH = 18319 FT. = 3.47 MILE  
NET LENGTH = 15867 FT. = 3.01 MILE

STATE OF ILLINOIS  
DEPARTMENT OF TRANSPORTATION

SUBMITTED Oct 16 2024  
[Signature] REGIONAL ENGINEER

December 6, 2024  
[Signature]  
ENGINEER OF DESIGN AND ENVIRONMENT

December 6, 2024  
[Signature]  
DIRECTOR OF HIGHWAYS PROJECT IMPLEMENTATION

PRINTED BY THE AUTHORITY  
OF THE STATE OF ILLINOIS

**INDEX OF SHEETS**

**STATE STANDARDS**

**GENERAL NOTES CONT.**

**SHEET NO. DESCRIPTION**

**STANDARD NO. DESCRIPTION**

1	COVER SHEET		
2	INDEX OF SHEETS, STATE STANDARDS AND GENERAL NOTES	000001-08	STANDARD SYMBOLS, ABBREVIATIONS AND PATTERNS
3-4	SUMMARY OF QUANTITIES	424001-12	PERPENDICULAR CURB RAMPS FOR SIDEWALKS
5-6	TYPICAL SECTIONS	442201-03	CLASS C AND D PATCHES
7-13	PROPOSED PLANS AND PAVEMENT MARKING PLANS	482011-03	HMA SHLD. STRIPS/SHLDS. WITH RESURFACING OR WIDENING AND RESURFACING PROJECTS
14	ADA RAMP DETAILS	642006-01	SHOULDER RUMBLE STRIPS, 8 IN
15	PAVEMENT PATCHING FOR HMA SURFACED PAVEMENT (BD-22)	701006-05	OFF-RD OPERATIONS, 2L, 2W, 15' (4.5 m) TO 24" (600 mm) FROM PAVEMENT EDGE
16	CURB OR CURB AND GUTTER REMOVAL AND REPLACEMENT (BD-24)	701011-04	OFF-RD MOVING OPERATIONS 2L,2W, DAY ONLY
17	BUTT JOINT AND HMA TAPER DETAILS (BD-32)	701301-04	LANE CLOSURE, 2L, 2W, SHORT TIME OPERATIONS
18	RUMBLE STRIPS FOR CENTERLINE, NON-FREEWAY (BD-55)	701306-04	LANE CLOSURE, 2L, 2W, SLOW MOVING OPERATIONS DAY ONLY, FOR SPEEDS GREATER THAN OR EQUAL TO 45 MPH
19	TRAFFIC CONTROL AND PROTECTION FOR SIDE ROADS, INTERSECTIONS, AND DRIVEWAYS (TC-10)	701311-03	LANE CLOSURE, 2L, 2W, MOVING OPERATIONS DAY ONLY
20	TYPICAL APPLICATIONS RAISED REFLECTIVE PAVEMENT MARKERS (SNOW-PLOW RESISTANT) (TC-11)	701336-07	LANE CLOSURE, 2L, 2W, WORK AREAS IN SERIES FOR SPEEDS GREATER THAN OR EQUAL TO 45 MPH
21	DISTRICT ONE TYPICAL PAVEMENT MARKINGS (TC-13)	701501-06	URBAN LANE CLOSURE, 2L, 2W, UNDIVIDED
22	SHORT TERM PAVEMENT MARKING LETTERS AND SYMBOLS (TC-16)	701502-09	URBAN LANE CLOSURE, 2L, 2W, WITH BIDIRECTIONAL LEFT TURN LANE
23	ARTERIAL ROAD INFORMATION SIGNING (TC-22)	701801-06	SIDEWALK, CORNER, OR CROSSWALK CLOSURE
24	DRIVEWAY ENTRANCE SIGNING (TC-26)	701901-10	TRAFFIC CONTROL DEVICES
25	PROJECT DETAIL FOR SINGLE PERPENDICULAR CURB RAMPS (PD-01)	886001-01	DETECTOR LOOP INSTALLATIONS
26	PROJECT DETAIL FOR SINGLE PERPENDICULAR CURB RAMPS (PD-02)	886006-01	TYPICAL LAYOUTS FOR DETECTION LOOPS

- PAVEMENT MARKING TAPE, TYPE IV SHALL BE USED FOR SHORT TERM PAVEMENT MARKINGS ON ALL FINAL SURFACES.
- OVERNIGHT LANE CLOSURES SHALL NOT BE ALLOWED FOR REHABILITATION PROJECTS INVOLVING DAYTIME MILLING AND RESURFACING OPERATIONS AND CLASS D PATCHING UNLESS OTHER CONDITIONS WARRANT EXTENDED LANE CLOSURES AS DETERMINED AND APPROVED IN WRITING BY THE ENGINEER OR AS PROVIDED FOR IN THE CONTRACT SPECIFICATIONS.
- SIDEWALK REMOVAL AND P.C.C. SIDEWALK 5" LOCATIONS SHALL BE DETERMINED BY THE ENGINEER.
- THE CONTRACTOR WILL NOT BE ALLOWED TO SET UP A YARD OR FIELD OFFICE ON STATE PROPERTY WITHOUT WRITTEN PERMISSION FROM THE DEPARTMENT.
- ALL DAMAGE TO EXISTING PAVEMENT MARKINGS OR RAISED REFLECTIVE PAVEMENT MARKERS OUTSIDE THE REMOVAL LINE SHOWN ON THE PLANS SHALL BE REPLACED AT NO ADDITIONAL COST TO THE DEPARTMENT.
- BEFORE BEGINNING ANY WORK, THE CONTRACTOR SHALL RETAIN AND RECORD FOR FUTURE REFERENCE, ALL EXISTING PAVEMENT MARKING LINES (AND RAISED REFLECTIVE PAVEMENT MARKERS) IN ORDER THAT THESE LOCATIONS CAN BE RE-ESTABLISHED FOR STRIPING. EXACT LOCATIONS OF ALL PAVEMENT MARKINGS SHALL BE AS SHOWN ON THE PLANS OR AS DIRECTED BY THE ENGINEER.
- ALL PAVEMENT PATCHING LOCATIONS WILL BE DETERMINED IN THE FIELD BY THE ENGINEER.
- ALL MILLED SURFACES SHALL BE A UNIFORM CROSS SLOPE PER LANE AND FREE OF RIDGES BETWEEN PASSES. ANY DEVIATIONS SHALL BE CORRECTED AT NO COST TO THE DEPARTMENT.
- IT SHALL BE THE CONTRACTOR'S RESPONSIBILITY TO VERIFY ALL DIMENSIONS AND CONDITIONS EXISTING IN THE FIELD PRIOR TO CONSTRUCTION AND ORDERING OF MATERIALS.
- THE CONTRACTOR SHALL CONTACT KALPANA KANNAN-HOSADURGA THE DISTRICT ONE TRAFFIC CONTROL SUPERVISOR AT KALPANA.KANNAN-HOSADURGA@ILLINOIS.GOV A MINIMUM OF 72 HOURS IN ADVANCE OF BEGINNING WORK.
- THE ENGINEER SHALL CONTACT WALTER CZARNY, AREA TRAFFIC FIELD ENGINEER, AT WALTER.CZARNY@ILLINOIS.GOV A MINIMUM OF TWO (2) WEEKS PRIOR TO THE PLACEMENT OF PERMANENT PAVEMENT MARKINGS.
- THE CONTRACTOR SHALL BE REQUIRED TO PROVIDE ACCESS TO ABUTTING PROPERTY AT ALL TIMES DURING THE CONSTRUCTION OF THIS PROJECT.
- DO NOT SCALE PLANS FOR CONSTRUCTION DIMENSIONS.
- THE AGGREGATE GRADATION FOR THE AGGREGATE SUBGRADE IMPROVEMENT 12" LOWER LIFT SHALL BE CS 1 OR RR 1.
- ANY EXCAVATED SHOULDER WORK FOR SHOULDER WIDENING MUST HAVE 12" AGGREGATE SUBGRADE IMPROVEMENT INSTALLED BY THE END OF EACH WORK SHIFT.

MODEL: GenNotesSh01 (Sheet)  
FILE NAME: c:\pw\_work\kwick\connor.mullane@illinois.gov\0987243\121422-sh1-gennotes.dgn

USER NAME = connor.mullane	DESIGNED -	REVISED -
	DRAWN -	REVISED -
PLOT SCALE = 0.16666633 1/ in.	CHECKED -	REVISED -
PLOT DATE = 10/17/2024	DATE -	REVISED -

**STATE OF ILLINOIS  
DEPARTMENT OF TRANSPORTATION**

**INDEX OF SHEETS, STATE STANDARDS,  
AND GENERAL NOTES**

SCALE: SHEET OF 1 SHEETS STA. TO STA.

F.A.P. RTE.	SECTION	COUNTY	TOTAL SHEETS	SHEET NO.
303	FAP 0303 22 RS	MCHENRY	26	2
CONTRACT NO. 62R95			ILLINOIS FED. AID PROJECT	

SUMMARY OF QUANTITIES				TYPE CODE					
				URBAN	URBAN	URBAN	URBAN	URBAN	URBAN
				ROADWAY	SIGNAL	LIGHTING	SEWER		
Code No.	Item	Unit	Total Quantity	80% FED 20% STATE	80% FED 20% STATE	80% FED 20% STATE	100% STATE		
20200100	EARTH EXCAVATION	CU YD	3062	3062					
30300112	AGGREGATE SUBGRADE IMPROVEMENT 12"	SQ YD	5644	5644					
35501308	HOT-MIX ASPHALT BASE COURSE, 6"	SQ YD	10	10					
35501316	HOT-MIX ASPHALT BASE COURSE, 8"	SQ YD	104	104					
35600717	HOT-MIX ASPHALT BASE COURSE WIDENING, 10 1/4"	SQ YD	5644	5644					
40600275	BITUMINOUS MATERIALS (PRIME COAT)	POUND	12699	12699					
40600290	BITUMINOUS MATERIALS (TACK COAT)	POUND	25657	25657					
40600370	LONGITUDINAL JOINT SEALANT	FOOT	33037	33037					
40600400	MIXTURE FOR CRACKS, JOINTS, AND FLANGEWAYS	TON	82	82					
40600982	HOT-MIX ASPHALT SURFACE REMOVAL - BUTT JOINT	SQ YD	240.8	240.8					
40604060	HOT-MIX ASPHALT SURFACE COURSE, IL-9.5, MIX "D", N50	TON	9	9					
40604062	HOT-MIX ASPHALT SURFACE COURSE, IL-9.5, MIX "D", N70	TON	5036	5036					
42001300	PROTECTIVE COAT	SQ YD	58	58					
42400200	PORTLAND CEMENT CONCRETE SIDEWALK 5 INCH	SQ FT	515	515					
42400800	DETECTABLE WARNINGS	SQ FT	42	42					
44000100	PAVEMENT REMOVAL	SQ YD	1915	1915					
44000155	HOT-MIX ASPHALT SURFACE REMOVAL, 1 1/2"	SQ YD	54193	54193					
44000200	DRIVEWAY PAVEMENT REMOVAL	SQ YD	114	114					
44000600	SIDEWALK REMOVAL	SQ FT	515	515					
44201803	CLASS D PATCHES, TYPE II, 13 INCH	SQ YD	1000	1000					
44201807	CLASS D PATCHES, TYPE III, 13 INCH	SQ YD	700	700					
44201809	CLASS D PATCHES, TYPE IV, 13 INCH	SQ YD	350	350					

SUMMARY OF QUANTITIES				TYPE CODE					
				URBAN	URBAN	URBAN	URBAN	URBAN	URBAN
				ROADWAY	SIGNAL	LIGHTING	SEWER		
Code No.	Item	Unit	Total Quantity	80% FED 20% STATE	80% FED 20% STATE	80% FED 20% STATE	100% STATE		
48102100	AGGREGATE WEDGE SHOULDER, TYPE B	TON	992	992					
64200108	SHOULDER RUMBLE STRIPS, 8 INCH	FOOT	28748	28748					
* 66900200	NON-SPECIAL WASTE DISPOSAL	CU YD	3062	3062					
* 66900530	SOIL DISPOSAL ANALYSIS	EACH	10	10					
* 66901001	REGULATED SUBSTANCES PRE-CONSTRUCTION PLAN	L SUM	1	1					
* 66901003	REGULATED SUBSTANCES FINAL CONSTRUCTION REPORT	L SUM	1	1					
* 66901006	REGULATED SUBSTANCES MONITORING	CAL DA	20	20					
67100100	MOBILIZATION	L SUM	1	1					
70100460	TRAFFIC CONTROL AND PROTECTION, STANDARD 701306	L SUM	1	1					
70100600	TRAFFIC CONTROL AND PROTECTION, STANDARD 701336	L SUM	1	1					
70102620	TRAFFIC CONTROL AND PROTECTION, STANDARD 701501	L SUM	1	1					
70102622	TRAFFIC CONTROL AND PROTECTION, STANDARD 701502	L SUM	1	1					
70102640	TRAFFIC CONTROL AND PROTECTION, STANDARD 701801	L SUM	1	1					
70103815	TRAFFIC CONTROL SURVEILLANCE	CAL DA	10	10					
70300100	SHORT TERM PAVEMENT MARKING	FOOT	4044	4044					
70300150	SHORT TERM PAVEMENT MARKING REMOVAL	SQ FT	2022	2022					
70300221	TEMPORARY PAVEMENT MARKING - LINE 4"- PAINT	FOOT	44046	44046					
70300261	TEMPORARY PAVEMENT MARKING - LINE 12"- PAINT	FOOT	71	71					
70300281	TEMPORARY PAVEMENT MARKING - LINE 24"- PAINT	FOOT	62	62					
70307120	TEMPORARY PAVEMENT MARKING - LINE 4" - TYPE IV TAPE	FOOT	2022	2022					
* 78000200	THERMOPLASTIC PAVEMENT MARKING - LINE 4"	FOOT	33609	33609					

\* = SPECIALTY ITEM

\* = SPECIALTY ITEM

MODEL: SOC-1 [Sheet]  
FILE NAME: c:\pw\work\wis\connor.mullane@illinois.gov\d0867243D121422-shr-SOC.dgn

USER NAME = connor.mullane	DESIGNED -	REVISED -
	DRAWN -	REVISED -
	CHECKED -	REVISED -
PLOT DATE = 10/17/2024	DATE -	REVISED -

**STATE OF ILLINOIS  
DEPARTMENT OF TRANSPORTATION**

**SUMMARY OF QUANTITIES  
IL 173 (BOONE COUNTY LINE TO FLAT IRON RD)**

SCALE: SHEET 3 OF 2 SHEETS STA. TO STA.

F.A.P. RTE.	SECTION	COUNTY	TOTAL SHEETS	SHEET NO.
303	FAP 0303 22 RS	MCHENRY	26	3
ILLINOIS FED. AID PROJECT			CONTRACT NO. 62R95	

SUMMARY OF QUANTITIES				TYPE CODE					
				URBAN	URBAN	URBAN	URBAN	URBAN	URBAN
				ROADWAY	SIGNAL	LIGHTING	SEWER		
Code No.	Item	Unit	Total Quantity	80% FED 20% STATE	80% FED 20% STATE	80% FED 20% STATE	100% STATE		
* 7800650	THERMOPLASTIC PAVEMENT MARKING - LINE 24"	FOOT	62	62					
* 78009000	MODIFIED URETHANE PAVEMENT MARKING - LETTERS AND SYMBOLS	SQ FT	184	184					
* 78009004	MODIFIED URETHANE PAVEMENT MARKING - LINE 4"	FOOT	12147	12147					
* 78009006	MODIFIED URETHANE PAVEMENT MARKING - LINE 6"	FOOT	582	582					
* 78009012	MODIFIED URETHANE PAVEMENT MARKING - LINE 12"	FOOT	182	182					
* 78009024	MODIFIED URETHANE PAVEMENT MARKING - LINE 24"	FOOT	84	84					
* 78100100	RAISED REFLECTIVE PAVEMENT MARKER	EACH	416	416					
78300200	RAISED REFLECTIVE PAVEMENT MARKER REMOVAL	EACH	416	416					
78300202	PAVEMENT MARKING REMOVAL - WATER BLASTING	SQ FT	19751	19751					
X0320050	CONSTRUCTION LAYOUT (SPECIAL)	L SUM	1	1					
X6420114	CENTER LINE - RUMBLE STRIP - 16"	FOOT	14402	14402					
X2020110	GRADING AND SHAPING SHOULDERS	UNIT	274	274					
X6700407	ENGINEER'S FIELD OFFICE, TYPEA (D1)	CAL MO	12	12					
* X7800815	HOT SPRAY THERMOPLASTIC PAVEMENT MARKING LINE - 4 INCH	FOOT	10437	10437					
* X7800855	HOT SPRAY THERMOPLASTIC PAVEMENT MARKING LINE - 12 INCH	FOOT	71	71					
Z0030850	TEMPORARY INFORMATION SIGNING	SQ FT	52	52					

\* = SPECIALTY ITEM

MODEL: SOQ\_2 [Sheet]  
FILE NAME: c:\pwworking\connor.mullane@illinois.gov\d0987243D121422-shr-SOQ.dgn

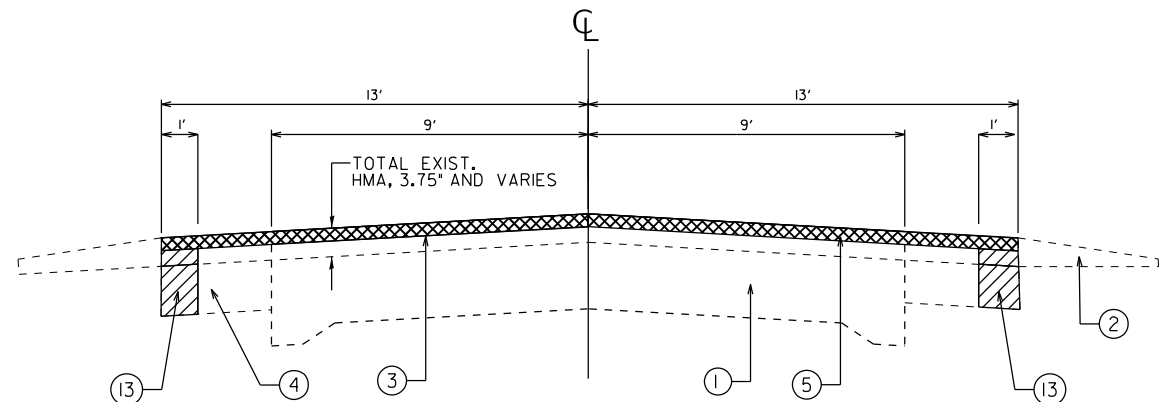
USER NAME = connor.mullane	DESIGNED -	REVISED -
	DRAWN -	REVISED -
	CHECKED -	REVISED -
PLOT DATE = 10/17/2024	DATE -	REVISED -

**STATE OF ILLINOIS  
DEPARTMENT OF TRANSPORTATION**

**SUMMARY OF QUANTITIES  
IL 173 (BOONE COUNTY LINE TO FLAT IRON RD)**

SCALE: SHEET 4 OF 2 SHEETS STA. TO STA.

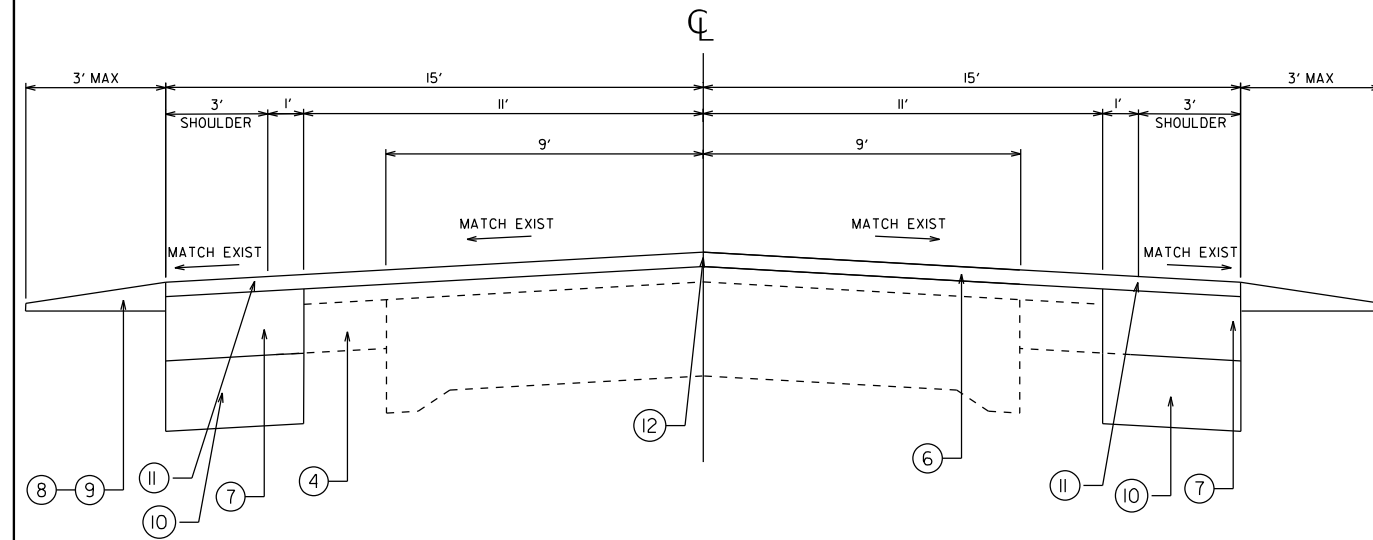
F.A.P RTE.	SECTION	COUNTY	TOTAL SHEETS	SHEET NO.
303	FAP 0303 22 RS	MCHENRY	26	4
ILLINOIS			FED. AID PROJECT	



EXISTING TYPICAL SECTION  
FROM STA 22+11 TO STA 108+31

PROPOSED RUMBLE STRIP SECTIONS  
 FROM STA 22+11 TO STA 108+30  
 FROM STA 117+42 TO STA 120+88  
 FROM STA 122+40 TO STA 130+20  
 FROM STA 132+66 TO STA 137+80  
 FROM STA 163+00 TO STA 205+31

- LEGEND**
- ① EXISTING PCC BASE COURSE: 9"
  - ② EXISTING AGGREGATE SHOULDER
  - ③ EXISTING HMA PAVEMENT
  - ④ EXISTING WIDENING
  - ⑤ PROPOSED HMA SURFACE REMOVAL, 1 1/2"
  - ⑥ PROPOSED HMA SURFACE COURSE, IL-9.5, MIX "D", N70; 1 1/2"
  - ⑦ PROPOSED HMA BASE COURSE WIDENING, 10.25"
  - ⑧ PROPOSED GRADING AND SHAPING SHOULDERS
  - ⑨ PROPOSED AGGREGATE WEDGE SHOULDER, TYPE B
  - ⑩ PROPOSED AGGREGATE SUBGRADE IMPROVEMENT, 12"
  - ⑪ PROPOSED SHOULDER RUMBLE STRIP 8"
  - ⑫ PROPOSED CENTERLINE RUMBLE STRIP 16"
  - ⑬ PROPOSED PAVEMENT REMOVAL



PROPOSED TYPICAL SECTION  
FROM STA 22+11 TO STA 108+31

HOT-MIX ASPHALT MIXTURE REQUIREMENTS			
MIXTURE USES	MIXTURE TYPE	AIR VOIDS @ Ndes	QUALITY MANAGEMENT PROGRAM (QMP)
PAVEMENT RESURFACING	HOT-MIX ASPHALT SURFACE COURSE, MIX "D", IL-9.5, N70, 1 1/2"	4.0% @ 70 GYR	OCP
PATCHING	CLASS D PATCHES (HMA BINDER IL-19.0)	4.0% @ 70 GYR	QC/OA
HMA SHOULDER WIDENING	HOT-MIX ASPHALT SURFACE COURSE, MIX "D", IL-9.5, N70, 1 1/2"	4.0% @ 50 GYR	OCP
	HOT MIX ASPHALT BASE COURSE WIDENING, 10 1/4" (HMA BINDER IL-19.0)	4.0% @ 70 GYR	QC/OA
DRIVEWAY	BASE HOT MIX ASPHALT BASE COURSE 6" AND 8" (HMA BINDER IL-19.0)	4.0% @ 50 GYR	QC/OA
	SURFACE HOT-MIX ASPHALT SURFACE COURSE, MIX "D", IL-9.5, N50, 2"	4.0% @ 50 GYR	QC/OA

QMP DESIGNATION: QUALITY CONTROL/QUALITY ASSURANCE (QC/OA); QUALITY CONTROL FOR PERFORMANCE (OCP); PAY FOR PERFORMANCE (PFP)

- NOTE 1: THE UNIT WEIGHT USED TO CALCULATE ALL HMA SURFACE MIXTURE QUANTITIES IS 112 LBS/SO YD/IN.
- NOTE 2: THE "AC TYPE" FOR POLYMERIZED HMA MIXES SHALL BE "SBS/SBR PG 76 -22" AND FOR NON-POLYMERIZED HMA THE "AC TYPE" SHALL BE "PG 64 -22" UNLESS MODIFIED BY RECLAIMED MATERIALS SPECIFICATIONS.
- NOTE 3: THE LONGITUDINAL JOINT SEALANT SHALL BE PLACED OVER THE MILLED SURFACE.
- NOTE 4: THE CONTRACTOR SHALL MILL FIRST THEN PATCH.
- NOTE 5: PROPOSED 4' BASE COURSE WIDENING CUTS INTO EXISTING PAVEMENT 1' CREATING A 3' SHOULDER (TO BE PAID FOR BY PAVEMENT REMOVAL).

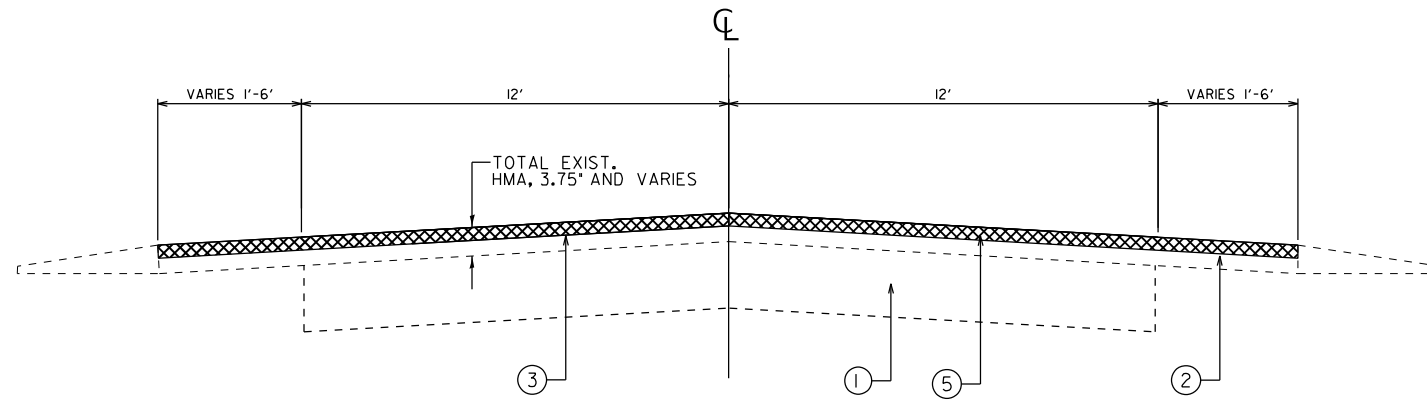
MODEL: TYPICAL-NEW SHOULDER (Sheet)  
FILE NAME: c:\p\work\wid\connor.mullane@illinois.gov\d098743\0121422-shr-typical.dgn

USER NAME = connor.mullane	DESIGNED -	REVISED -
	DRAWN -	REVISED -
	CHECKED -	REVISED -
PLOT DATE = 10/17/2024	DATE -	REVISED -

**STATE OF ILLINOIS  
DEPARTMENT OF TRANSPORTATION**

<b>TYPICAL SECTIONS</b>	
<b>IL 173 (BOONE COUNTY LINE TO FLAT IRON RD)</b>	
SCALE:	SHEET OF 2 SHEETS STA. TO STA.

F.A.P. RTE.	SECTION	COUNTY	TOTAL SHEETS	SHEET NO.
303	FAP 0303 22 RS	MCHENRY	26	5
ILLINOIS FED. AID PROJECT			CONTRACT NO. 62R95	



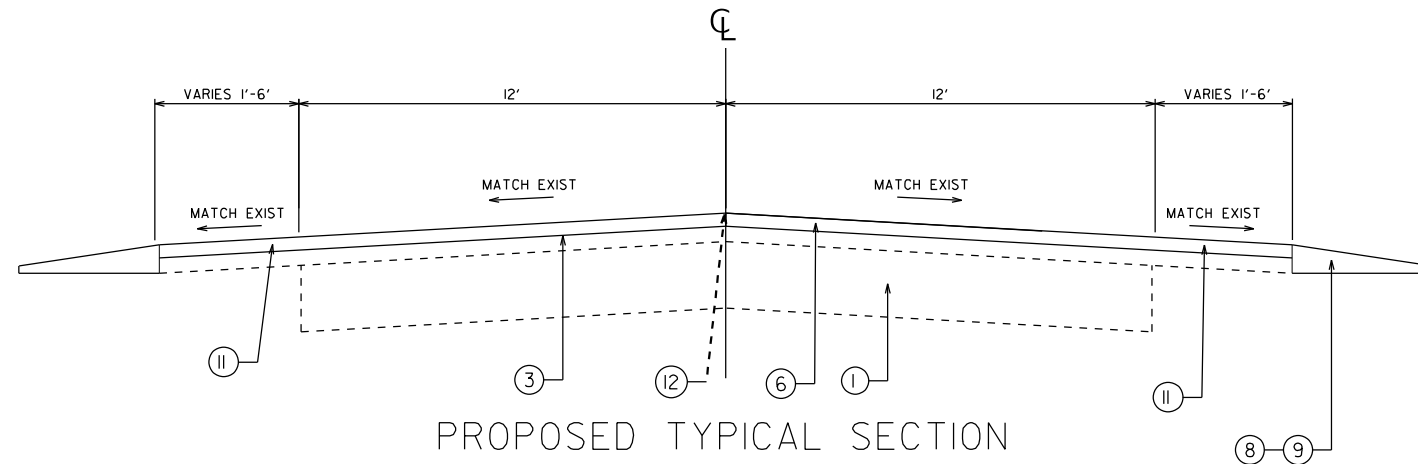
EXISTING TYPICAL SECTION  
 STA 117+41 TO STA 120+87  
 STA 122+40 TO STA 130+20  
 STA 132+66 TO STA 137+80  
 STA 149+23 TO STA 205+31

### LEGEND

- ① EXISTING PCC BASE COURSE: 9'
- ② EXISTING AGGREGATE SHOULDER
- ③ EXISTING HMA PAVEMENT
- ④ EXISTING WIDENING
- ⑤ PROPOSED HMA SURFACE REMOVAL, 1/2"
- ⑥ PROPOSED HMA SURFACE COURSE, IL-9.5, MIX D, N70; 1/2"
- ⑦ PROPOSED HMA BASE COURSE WIDENING, 10.25"
- ⑧ PROPOSED GRADING AND SHAPING SHOULDERS
- ⑨ PROPOSED AGGREGATE WEDGE SHOULDER, TYPE B
- ⑩ PROPOSED AGGREGATE SUBGRADE IMPROVEMENT, 12"
- ⑪ PROPOSED SHOULDER RUMBLE STRIP 8"
- ⑫ PROPOSED CENTERLINE RUMBLE STRIP 16"
- ⑬ PROPOSED PAVEMENT REMOVAL

### PROPOSED RUMBLE STRIP SECTIONS

- FROM STA 22+11 TO STA 108+30
- FROM STA 117+42 TO STA 120+88
- FROM STA 122+40 TO STA 130+20
- FROM STA 132+66 TO STA 137+80
- FROM STA 163+00 TO STA 205+31



PROPOSED TYPICAL SECTION  
 STA 117+41 TO STA 120+87  
 STA 122+40 TO STA 130+20  
 STA 132+66 TO STA 137+80  
 STA 149+23 TO STA 205+31

MODEL: TYPICAL-EAST OF TOWN (Sheet)  
 FILE NAME: c:\p\work\evict\connor.mullane@illinois.gov\121422-sh-typical.dgn

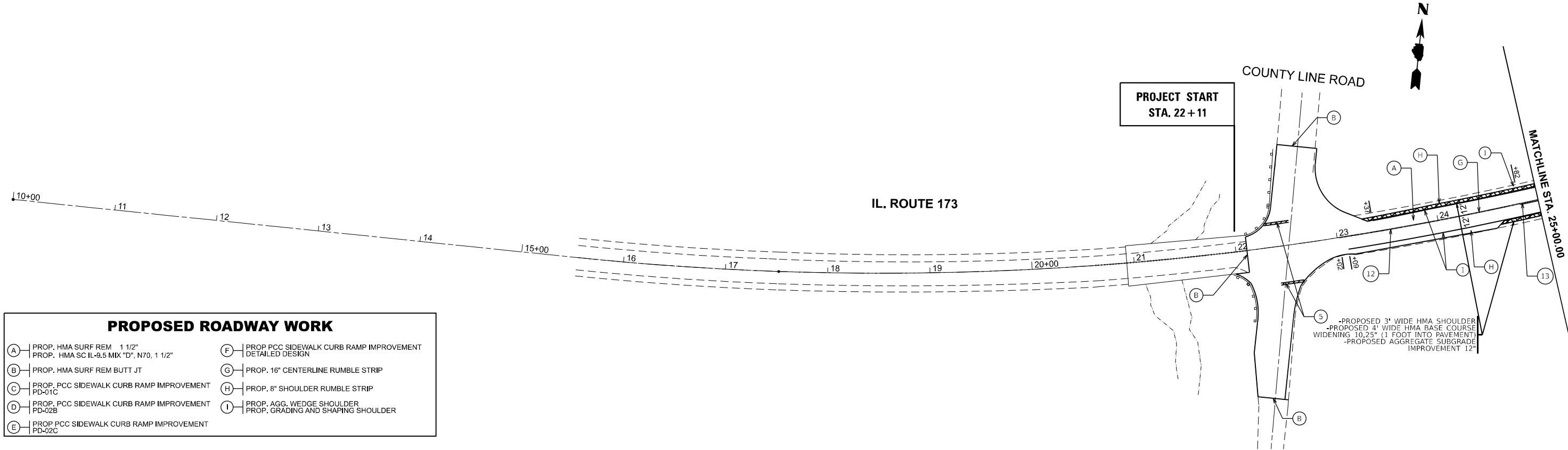
USER NAME = connor.mullane	DESIGNED -	REVISED -
	DRAWN -	REVISED -
	CHECKED -	REVISED -
PLOT DATE = 10/17/2024	DATE -	REVISED -

STATE OF ILLINOIS  
 DEPARTMENT OF TRANSPORTATION

TYPICAL SECTIONS  
 IL 173 (BOONE COUNTY LINE TO FLAT IRON RD)

SCALE: SHEET OF 2 SHEETS STA. TO STA.

F.A.P. RTE.	SECTION	COUNTY	TOTAL SHEETS	SHEET NO.
303	FAP 0303 22 RS	MCHENRY	26	6
ILLINOIS			FED. AID PROJECT	

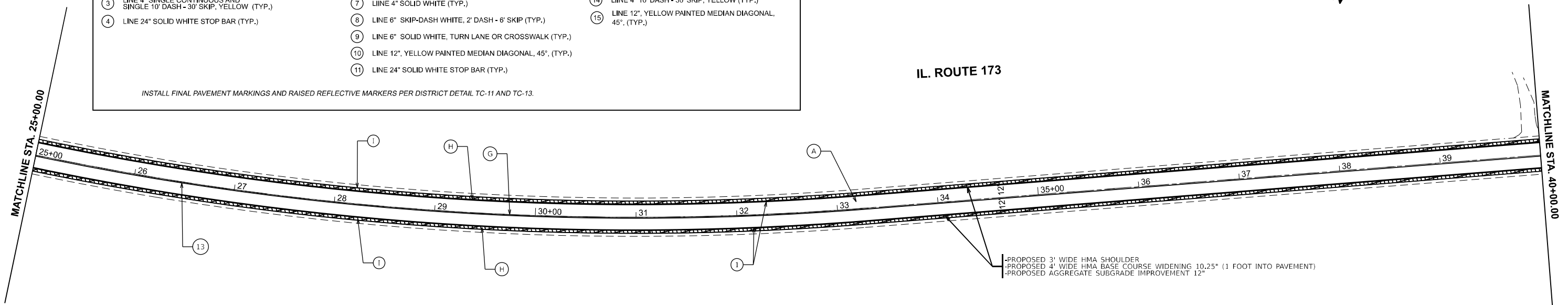


PROPOSED ROADWAY WORK			
(A)	PROP. HMA SURF REM 1 1/2" PROP. HMA SC IL-9.5 MIX "D", N70, 1 1/2"	(F)	PROP PCC SIDEWALK CURB RAMP IMPROVEMENT DETAILED DESIGN
(B)	PROP. HMA SURF REM BUTT JT	(G)	PROP. 16" CENTERLINE RUMBLE STRIP
(C)	PROP. PCC SIDEWALK CURB RAMP IMPROVEMENT PD-01C	(H)	PROP. 8" SHOULDER RUMBLE STRIP
(D)	PROP. PCC SIDEWALK CURB RAMP IMPROVEMENT PD-02B	(I)	PROP. AGG. WEDGE SHOULDER PROP. GRADING AND SHAPING SHOULDER
(E)	PROP PCC SIDEWALK CURB RAMP IMPROVEMENT PD-02C		

-PROPOSED 3' WIDE HMA SHOULDER  
-PROPOSED 4' WIDE HMA BASE COURSE  
WIDENING 10.25" (1 FOOT INTO PAVEMENT)  
-PROPOSED AGGREGATE SUBGRADE  
IMPROVEMENT 12"

PROPOSED PAVEMENT STRIPING LEGEND		
THERMOPLASTIC	URETHANE	HOT SPRAY
(1) LINE 4" SOLID WHITE (TYP.)	(5) LETTERS & SYMBOLS, SOLID, WHITE (TYP.)	(12) LINE 4" DOUBLE SOLID YELLOW, 2 @ 11" C-C (TYP.)
(2) LINE 4" DOUBLE SOLID YELLOW, 2 @ 11" C-C (TYP.)	(6) LINE 4" DOUBLE SOLID YELLOW, 2 @ 11" C-C (TYP.)	(13) LINE 4" SINGLE CONTINUOUS AND SINGLE 10' DASH - 30' SKIP, YELLOW (TYP.)
(3) LINE 4" SINGLE CONTINUOUS AND SINGLE 10' DASH - 30' SKIP, YELLOW (TYP.)	(7) LINE 4" SOLID WHITE (TYP.)	(14) LINE 4" 10' DASH - 30' SKIP, YELLOW (TYP.)
(4) LINE 24" SOLID WHITE STOP BAR (TYP.)	(8) LINE 6" SKIP-DASH WHITE, 2' DASH - 6' SKIP (TYP.)	(15) LINE 12", YELLOW PAINTED MEDIAN DIAGONAL, 45°, (TYP.)
	(9) LINE 6" SOLID WHITE, TURN LANE OR CROSSWALK (TYP.)	
	(10) LINE 12", YELLOW PAINTED MEDIAN DIAGONAL, 45°, (TYP.)	
	(11) LINE 24" SOLID WHITE STOP BAR (TYP.)	

INSTALL FINAL PAVEMENT MARKINGS AND RAISED REFLECTIVE MARKERS PER DISTRICT DETAIL TC-11 AND TC-13.



-PROPOSED 3' WIDE HMA SHOULDER  
-PROPOSED 4' WIDE HMA BASE COURSE WIDENING 10.25" (1 FOOT INTO PAVEMENT)  
-PROPOSED AGGREGATE SUBGRADE IMPROVEMENT 12"

MODEL: IL173\_EX - ReviewPlan 1  
FILE NAME: c:\p\work\173\concor.mullane\illinois.spl\1422-shr-plan.dgn

USER NAME = connor.mullane	DESIGNED -	REVISED -
	DRAWN -	REVISED -
	CHECKED -	REVISED -
PLOT DATE = 10/17/2024	DATE -	REVISED -

STATE OF ILLINOIS  
DEPARTMENT OF TRANSPORTATION

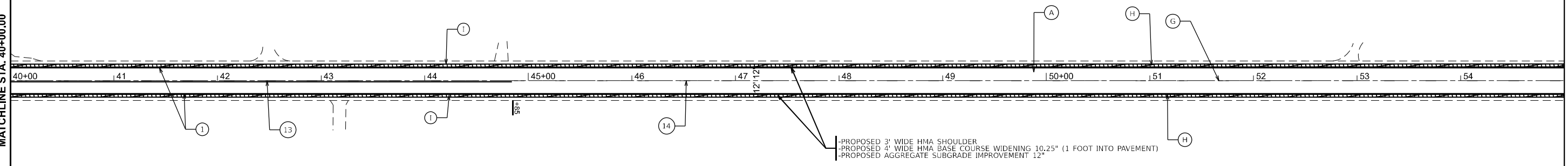
EXISTING AND PROPOSED ROADWAY PLAN IL. ROUTE 173 (BOONE COUNTY LINE TO FLAT IRON RD.)			
SCALE: 1"=50'	SHEET OF 7 SHEETS	STA. 10+00.00	TO STA. 40+00.00

F.A.P. RTE. 303	SECTION FAP 0303 22 RS	COUNTY MCHENRY	TOTAL SHEETS 26	SHEET NO. 7
CONTRACT NO. 62R95			ILLINOIS FED. AID PROJECT	

IL. ROUTE 173

MATCHLINE STA. 40+00.00

MATCHLINE STA. 55+00.00



**PROPOSED ROADWAY WORK**

- |   |   |
|---|---|
| (A) PROP. HMA SURF REM 1 1/2"<br>PROP. HMA SC IL-9.5 MIX "D", N70, 1 1/2" | (F) PROP PCC SIDEWALK CURB RAMP IMPROVEMENT<br>DETAILED DESIGN      |
| (B) PROP. HMA SURF REM BUTT JT  | (G) PROP. 16" CENTERLINE RUMBLE STRIP                               |
| (C) PROP. PCC SIDEWALK CURB RAMP IMPROVEMENT<br>PD-01C                    | (H) PROP. 8" SHOULDER RUMBLE STRIP                                  |
| (D) PROP. PCC SIDEWALK CURB RAMP IMPROVEMENT<br>PD-02B                    | (I) PROP. AGG. WEDGE SHOULDER<br>PROP. GRADING AND SHAPING SHOULDER |
| (E) PROP PCC SIDEWALK CURB RAMP IMPROVEMENT<br>PD-02C                     |   |

**PROPOSED PAVEMENT STRIPING LEGEND**

THERMOPLASTIC

URETHANE

HOT SPRAY

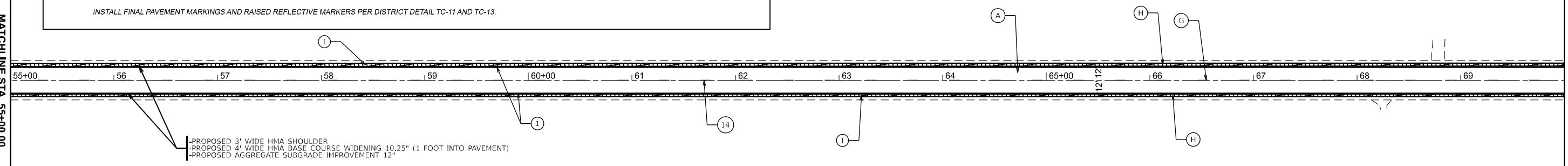
- |  |  |   |
|--|--|---|
| (1) LINE 4" SOLID WHITE (TYP.)   | (5) LETTERS & SYMBOLS, SOLID, WHITE (TYP.)                 | (12) LINE 4" DOUBLE SOLID YELLOW, 2 @ 11" C-C (TYP.)                            |
| (2) LINE 4" DOUBLE SOLID YELLOW, 2 @ 11" C-C (TYP.)                            | (6) LINE 4" DOUBLE SOLID YELLOW, 2 @ 11" C-C (TYP.)        | (13) LINE 4" SINGLE CONTINUOUS AND<br>SINGLE 10' DASH - 30' SKIP, YELLOW (TYP.) |
| (3) LINE 4" SINGLE CONTINUOUS AND<br>SINGLE 10' DASH - 30' SKIP, YELLOW (TYP.) | (7) LINE 4" SOLID WHITE (TYP.)                             | (14) LINE 4" 10' DASH - 30' SKIP, YELLOW (TYP.)                                 |
| (4) LINE 24" SOLID WHITE STOP BAR (TYP.)                                       | (8) LINE 6" SKIP-DASH WHITE, 2' DASH - 6' SKIP (TYP.)      | (15) LINE 12", YELLOW PAINTED MEDIAN DIAGONAL,<br>45°, (TYP.)                   |
|  | (9) LINE 6" SOLID WHITE, TURN LANE OR CROSSWALK (TYP.)     |   |
|  | (10) LINE 12", YELLOW PAINTED MEDIAN DIAGONAL, 45°, (TYP.) |   |
|  | (11) LINE 24" SOLID WHITE STOP BAR (TYP.)                  |   |

INSTALL FINAL PAVEMENT MARKINGS AND RAISED REFLECTIVE MARKERS PER DISTRICT DETAIL TC-11 AND TC-13.

IL. ROUTE 173

MATCHLINE STA. 55+00.00

MATCHLINE STA. 70+00.00



MODEL: IL173\_EX - Rdw/Plan 3  
FILE NAME: c:\p\work\173\concor.mullane\illinois.gov\0987243D121422-shr-plan.dgn

USER NAME = connor.mullane	DESIGNED -	REVISED -
	DRAWN -	REVISED -
	CHECKED -	REVISED -
PLOT DATE = 10/17/2024	DATE -	REVISED -

STATE OF ILLINOIS  
DEPARTMENT OF TRANSPORTATION

EXISTING AND PROPOSED ROADWAY PLAN  
IL. ROUTE 173 (BOONE COUNTY LINE TO FLAT IRON RD.)

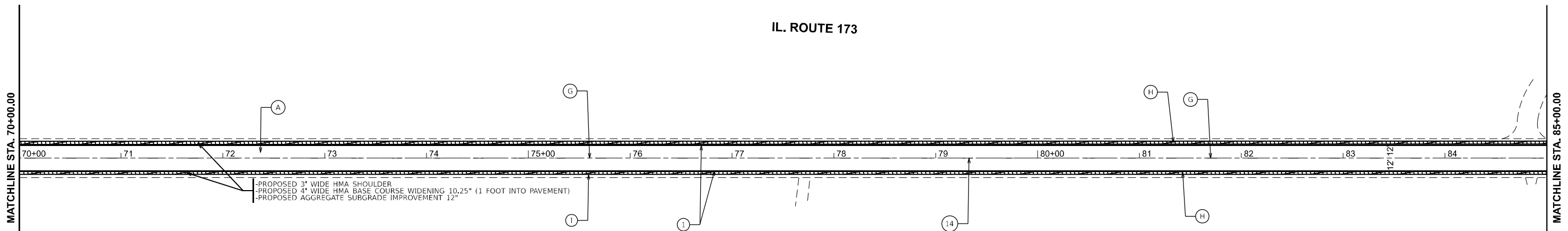
SCALE: 1"=50' SHEET OF 7 SHEETS STA. 40+00.00 TO STA. 70+00.00

F.A.P. RTE.	SECTION	COUNTY	TOTAL SHEETS	SHEET NO.
303	FAP 0303 22 RS	MCHENRY	26	8
CONTRACT NO. 62R95			ILLINOIS FED. AID PROJECT	





IL. ROUTE 173



-PROPOSED 3' WIDE HMA SHOULDER  
 -PROPOSED 4' WIDE HMA BASE COURSE WIDENING 10.25" (1 FOOT INTO PAVEMENT)  
 -PROPOSED AGGREGATE SUBGRADE IMPROVEMENT 12"

**PROPOSED ROADWAY WORK**

- |   |   |
|---|---|
| (A) PROP. HMA SURF REM 1 1/2"<br>PROP. HMA SC IL-9.5 MIX "D", N70, 1 1/2" | (F) PROP PCC SIDEWALK CURB RAMP IMPROVEMENT<br>DETAILED DESIGN      |
| (B) PROP. HMA SURF REM BUTT JT  | (G) PROP. 16" CENTERLINE RUMBLE STRIP                               |
| (C) PROP. PCC SIDEWALK CURB RAMP IMPROVEMENT<br>PD-01C                    | (H) PROP. 8" SHOULDER RUMBLE STRIP                                  |
| (D) PROP. PCC SIDEWALK CURB RAMP IMPROVEMENT<br>PD-02B                    | (I) PROP. AGG. WEDGE SHOULDER<br>PROP. GRADING AND SHAPING SHOULDER |
| (E) PROP. PCC SIDEWALK CURB RAMP IMPROVEMENT<br>PD-02C                    |   |

**PROPOSED PAVEMENT STRIPING LEGEND**

THERMOPLASTIC

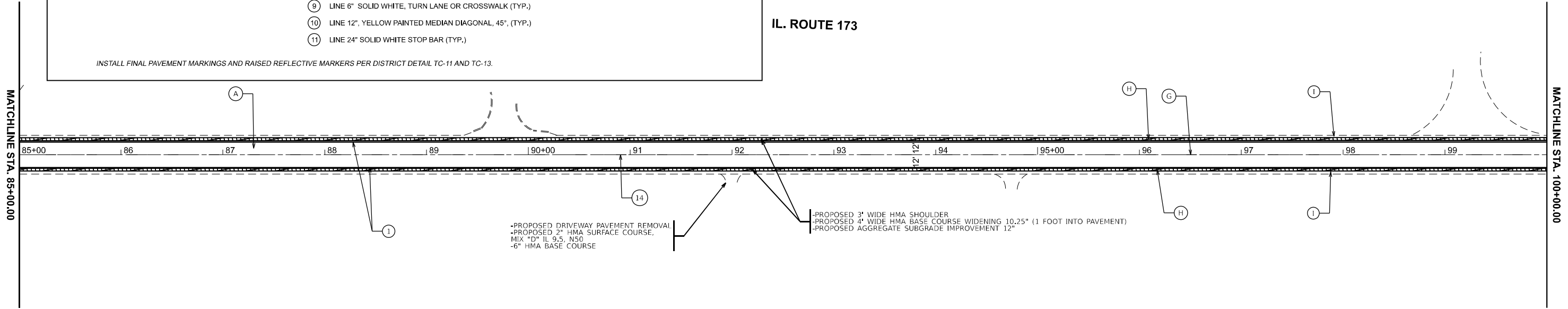
URETHANE

HOT SPRAY

- |  |  |   |
|--|--|---|
| (1) LINE 4" SOLID WHITE (TYP.)   | (5) LETTERS & SYMBOLS, SOLID, WHITE (TYP.)                 | (12) LINE 4" DOUBLE SOLID YELLOW, 2 @ 11" C-C (TYP.)                            |
| (2) LINE 4" DOUBLE SOLID YELLOW, 2 @ 11" C-C (TYP.)                            | (6) LINE 4" DOUBLE SOLID YELLOW, 2 @ 11" C-C (TYP.)        | (13) LINE 4" SINGLE CONTINUOUS AND<br>SINGLE 10' DASH - 30' SKIP, YELLOW (TYP.) |
| (3) LINE 4" SINGLE CONTINUOUS AND<br>SINGLE 10' DASH - 30' SKIP, YELLOW (TYP.) | (7) LINE 4" SOLID WHITE (TYP.)                             | (14) LINE 4" 10' DASH - 30' SKIP, YELLOW (TYP.)                                 |
| (4) LINE 24" SOLID WHITE STOP BAR (TYP.)                                       | (8) LINE 6" SKIP-DASH WHITE, 2' DASH - 6' SKIP (TYP.)      | (15) LINE 12", YELLOW PAINTED MEDIAN DIAGONAL,<br>45°, (TYP.)                   |
|  | (9) LINE 6" SOLID WHITE, TURN LANE OR CROSSWALK (TYP.)     |   |
|  | (10) LINE 12", YELLOW PAINTED MEDIAN DIAGONAL, 45°, (TYP.) |   |
|  | (11) LINE 24" SOLID WHITE STOP BAR (TYP.)                  |   |

INSTALL FINAL PAVEMENT MARKINGS AND RAISED REFLECTIVE MARKERS PER DISTRICT DETAIL TC-11 AND TC-13.

IL. ROUTE 173



-PROPOSED DRIVEWAY PAVEMENT REMOVAL  
 -PROPOSED 2" HMA SURFACE COURSE,  
 MIX "D" IL 9.5, N50  
 -6" HMA BASE COURSE

-PROPOSED 3' WIDE HMA SHOULDER  
 -PROPOSED 4' WIDE HMA BASE COURSE WIDENING 10.25" (1 FOOT INTO PAVEMENT)  
 -PROPOSED AGGREGATE SUBGRADE IMPROVEMENT 12"

MODEL: IL173\_EX - ReviewPlan 5  
 FILE NAME: c:\p\work\173\100\connor.mullane\illinois.spl\1422-shr-plan.dgn

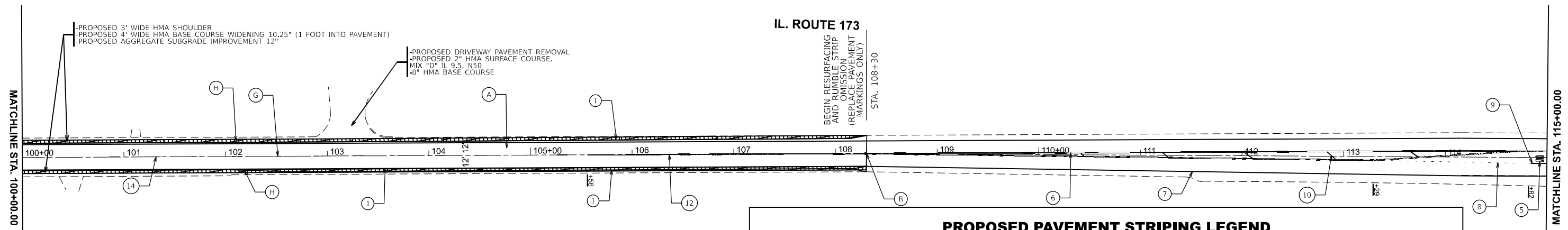
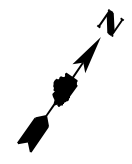
USER NAME = connor.mullane	DESIGNED -	REVISED -
	DRAWN -	REVISED -
	CHECKED -	REVISED -
PLOT DATE = 10/17/2024	DATE -	REVISED -

STATE OF ILLINOIS  
 DEPARTMENT OF TRANSPORTATION

EXISTING AND PROPOSED ROADWAY PLAN  
 IL. ROUTE 173 (BOONE COUNTY LINE TO FLAT IRON RD.)

SCALE: 1"=50' SHEET OF 7 SHEETS STA. 70+00.00 TO STA. 100+00.00

F.A.P. RTE.	SECTION	COUNTY	TOTAL SHEETS	SHEET NO.
303	FAP 0303 22 RS	MCHENRY	26	9
CONTRACT NO. 62R95			ILLINOIS FED. AID PROJECT	

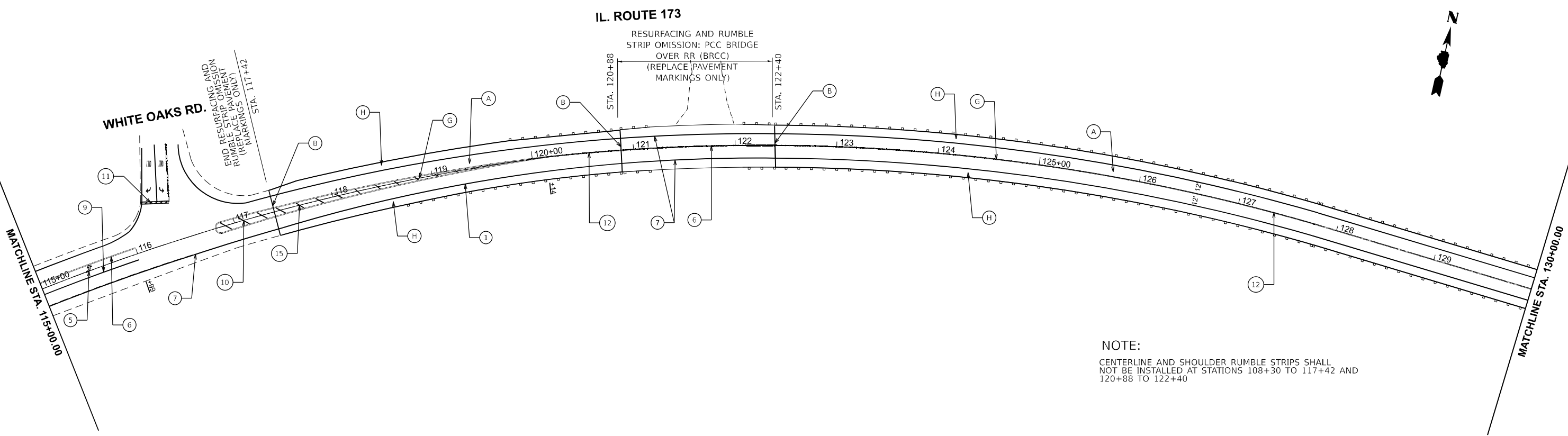


PROPOSED ROADWAY WORK			
A	PROP. HMA SURF REM 1 1/2"	F	PROP. PCC SIDEWALK CURB RAMP IMPROVEMENT DETAILED DESIGN
B	PROP. HMA SURF REM BUTT JT	G	PROP. 16" CENTERLINE RUMBLE STRIP
C	PROP. PCC SIDEWALK CURB RAMP IMPROVEMENT PD-01C	H	PROP. 8" SHOULDER RUMBLE STRIP
D	PROP. PCC SIDEWALK CURB RAMP IMPROVEMENT PD-02B	I	PROP. AGG. WEDGE SHOULDER PROP. GRADING AND SHAPING SHOULDER
E	PROP. PCC SIDEWALK CURB RAMP IMPROVEMENT PD-02C		

PROPOSED PAVEMENT STRIPING LEGEND		
THERMOPLASTIC	URETHANE	HOT SPRAY
1 LINE 4" SOLID WHITE (TYP.)	5 LETTERS & SYMBOLS, SOLID, WHITE (TYP.)	12 LINE 4" DOUBLE SOLID YELLOW, 2 @ 11" C-C (TYP.)
2 LINE 4" DOUBLE SOLID YELLOW, 2 @ 11" C-C (TYP.)	6 LINE 4" DOUBLE SOLID YELLOW, 2 @ 11" C-C (TYP.)	13 LINE 4" SINGLE CONTINUOUS AND SINGLE 10' DASH - 30' SKIP, YELLOW (TYP.)
3 LINE 4" SINGLE CONTINUOUS AND SINGLE 10' DASH - 30' SKIP, YELLOW (TYP.)	7 LINE 4" SOLID WHITE (TYP.)	14 LINE 4" 10' DASH - 30' SKIP, YELLOW (TYP.)
4 LINE 24" SOLID WHITE STOP BAR (TYP.)	8 LINE 6" SKIP-DASH WHITE, 2' DASH - 6' SKIP (TYP.)	15 LINE 12", YELLOW PAINTED MEDIAN DIAGONAL, 45°, (TYP.)
	9 LINE 6" SOLID WHITE, TURN LANE OR CROSSWALK (TYP.)	
	10 LINE 12", YELLOW PAINTED MEDIAN DIAGONAL, 45°, (TYP.)	
	11 LINE 24" SOLID WHITE STOP BAR (TYP.)	

INSTALL FINAL PAVEMENT MARKINGS AND RAISED REFLECTIVE MARKERS PER DISTRICT DETAIL TC-11 AND TC-13.

MODEL: IL173\_EX - ReviewPlan 7  
FILE NAME: c:\pwworkspace\connor.mullane@illinois.gov\115987243D\121422-shr-plan.dgn



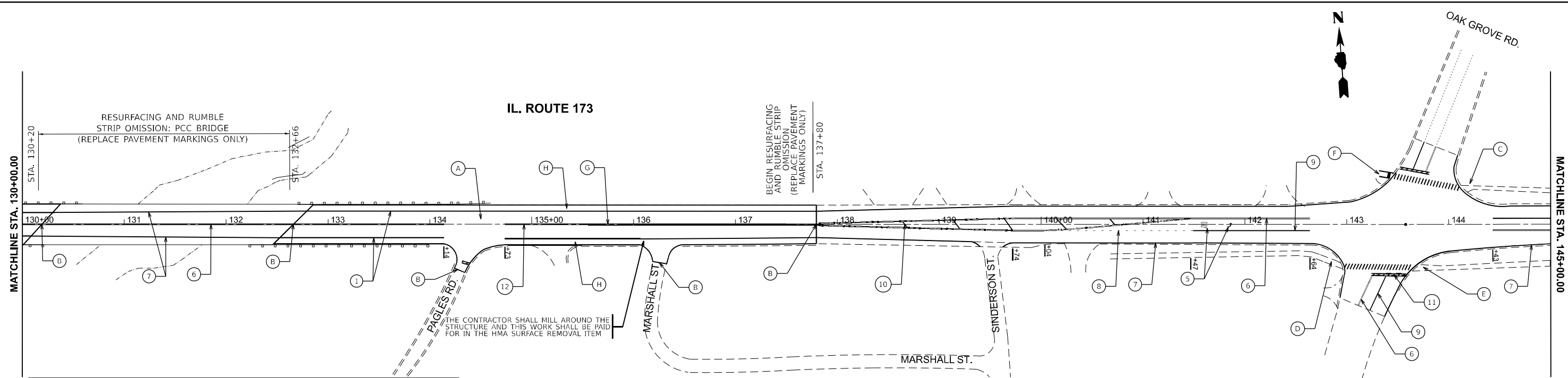
**NOTE:**  
CENTERLINE AND SHOULDER RUMBLE STRIPS SHALL NOT BE INSTALLED AT STATIONS 108+30 TO 117+42 AND 120+88 TO 122+40

USER NAME = connor.mullane	DESIGNED -	REVISED -
	DRAWN -	REVISED -
	CHECKED -	REVISED -
PLOT DATE = 11/18/2024	DATE -	REVISED -

**STATE OF ILLINOIS  
DEPARTMENT OF TRANSPORTATION**

<b>EXISTING AND PROPOSED ROADWAY PLAN IL. ROUTE 173 (BOONE COUNTY LINE TO FLAT IRON RD.)</b>		
SCALE: 1"=50'	SHEET OF 7 SHEETS	STA. 100+00.00 TO STA. 130+00.00

F.A.P. RTE.	SECTION	COUNTY	TOTAL SHEETS	SHEET NO.
303	FAP 0303 22 RS	MCHENRY	26	10
CONTRACT NO. 62R95				
ILLINOIS FED. AID PROJECT				



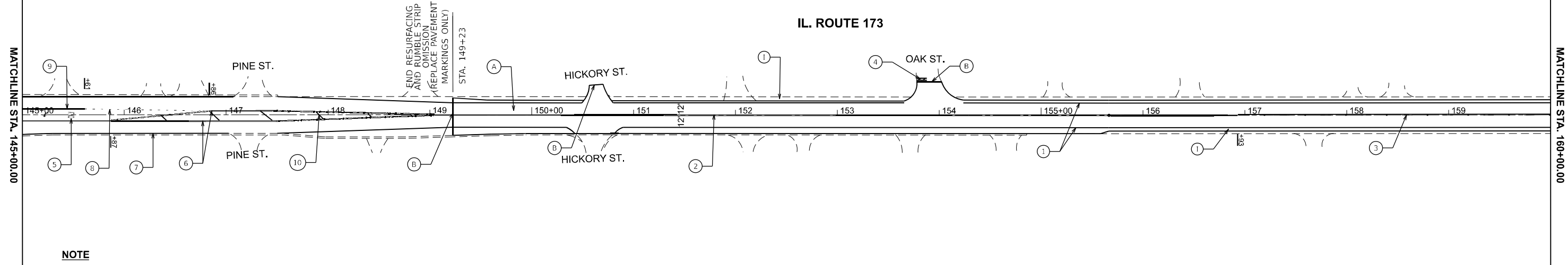
**PROPOSED ROADWAY WORK**

(A) PROP. HMA SURF REM 1 1/2" PROP. HMA SC IL-9.5 MIX "D", N70, 1 1/2"	(F) PROP PCC SIDEWALK CURB RAMP IMPROVEMENT DETAILED DESIGN
(B) PROP. HMA SURF REM BUTT JT	(G) PROP. 16" CENTERLINE RUMBLE STRIP
(C) PROP. PCC SIDEWALK CURB RAMP IMPROVEMENT PD-01C	(H) PROP. 8" SHOULDER RUMBLE STRIP
(D) PROP. PCC SIDEWALK CURB RAMP IMPROVEMENT PD-02B	(I) PROP. AGG. WEDGE SHOULDER PROP. GRADING AND SHAPING SHOULDER
(E) PROP PCC SIDEWALK CURB RAMP IMPROVEMENT PD-02C	

**PROPOSED PAVEMENT STRIPING LEGEND**

THERMOPLASTIC	URETHANE	HOT SPRAY
(1) LINE 4" SOLID WHITE (TYP.)	(5) LETTERS & SYMBOLS, SOLID, WHITE (TYP.)	(12) LINE 4" DOUBLE SOLID YELLOW, 2 @ 11" C-C (TYP.)
(2) LINE 4" DOUBLE SOLID YELLOW, 2 @ 11" C-C (TYP.)	(6) LINE 4" DOUBLE SOLID YELLOW, 2 @ 11" C-C (TYP.)	(13) LINE 4" SINGLE CONTINUOUS AND SINGLE 10' DASH - 30' SKIP, YELLOW (TYP.)
(3) LINE 4" SINGLE CONTINUOUS AND SINGLE 10' DASH - 30' SKIP, YELLOW (TYP.)	(7) LINE 4" SOLID WHITE (TYP.)	(14) LINE 4" 10' DASH - 30' SKIP, YELLOW (TYP.)
(4) LINE 24" SOLID WHITE STOP BAR (TYP.)	(8) LINE 6" SKIP-DASH WHITE, 2' DASH - 6' SKIP (TYP.)	(15) LINE 12", YELLOW PAINTED MEDIAN DIAGONAL, 45°, (TYP.)
	(9) LINE 6" SOLID WHITE, TURN LANE OR CROSSWALK (TYP.)	
	(10) LINE 12", YELLOW PAINTED MEDIAN DIAGONAL, 45°, (TYP.)	
	(11) LINE 24" SOLID WHITE STOP BAR (TYP.)	

INSTALL FINAL PAVEMENT MARKINGS AND RAISED REFLECTIVE MARKERS PER DISTRICT DETAIL TC-11 AND TC-13.



MODEL: IL173\_EX - ReviewPlan 9  
FILE NAME: c:\p\work\173\10\connor.mullane\illinois.gov\10987243D\121422-shr-plan.dgn

USER NAME = connor.mullane	DESIGNED -	REVISED -
	DRAWN -	REVISED -
	CHECKED -	REVISED -
PLOT DATE = 10/17/2024	DATE -	REVISED -

**STATE OF ILLINOIS  
DEPARTMENT OF TRANSPORTATION**

**EXISTING AND PROPOSED ROADWAY PLAN  
IL. ROUTE 173 (BOONE COUNTY LINE TO FLAT IRON RD.)**

SCALE: 1"=50'      SHEET OF 7 SHEETS      STA. 130+00.00 TO STA. 160+00.00

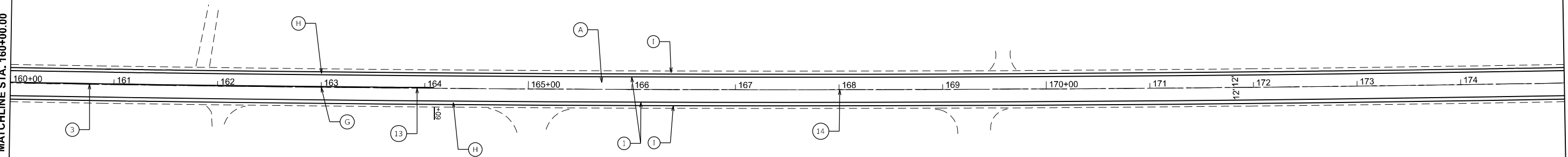
F.A.P. RTE. 303	SECTION FAP 0303 22 RS	COUNTY MCHENRY	TOTAL SHEETS 26	SHEET NO. 11
CONTRACT NO. 62R95			ILLINOIS FED. AID PROJECT	



IL. ROUTE 173

MATCHLINE STA. 160+00.00

MATCHLINE STA. 175+00.00



**PROPOSED ROADWAY WORK**

- |   |   |
|---|---|
| (A) PROP. HMA SURF REM 1 1/2"<br>PROP. HMA SC IL-9.5 MIX "D", N70, 1 1/2" | (F) PROP. PCC SIDEWALK CURB RAMP IMPROVEMENT<br>DETAILED DESIGN     |
| (B) PROP. HMA SURF REM BUTT JT  | (G) PROP. 16" CENTERLINE RUMBLE STRIP                               |
| (C) PROP. PCC SIDEWALK CURB RAMP IMPROVEMENT<br>PD-01C                    | (H) PROP. 8" SHOULDER RUMBLE STRIP                                  |
| (D) PROP. PCC SIDEWALK CURB RAMP IMPROVEMENT<br>PD-02B                    | (I) PROP. AGG. WEDGE SHOULDER<br>PROP. GRADING AND SHAPING SHOULDER |
| (E) PROP. PCC SIDEWALK CURB RAMP IMPROVEMENT<br>PD-02C                    |   |

**NOTE**

CENTERLINE AND SHOULDER RUMBLE STRIPS SHALL NOT BE INSTALLED FROM STATIONS 137+80 TO 163+00.

**PROPOSED PAVEMENT STRIPING LEGEND**

THERMOPLASTIC

URETHANE

HOT SPRAY

- |  |  |   |
|--|--|---|
| (1) LINE 4" SOLID WHITE (TYP.)   | (5) LETTERS & SYMBOLS, SOLID, WHITE (TYP.)                 | (12) LINE 4" DOUBLE SOLID YELLOW, 2 @ 11" C-C (TYP.)                            |
| (2) LINE 4" DOUBLE SOLID YELLOW, 2 @ 11" C-C (TYP.)                            | (6) LINE 4" DOUBLE SOLID YELLOW, 2 @ 11" C-C (TYP.)        | (13) LINE 4" SINGLE CONTINUOUS AND<br>SINGLE 10' DASH - 30' SKIP, YELLOW (TYP.) |
| (3) LINE 4" SINGLE CONTINUOUS AND<br>SINGLE 10' DASH - 30' SKIP, YELLOW (TYP.) | (7) LINE 4" SOLID WHITE (TYP.)                             | (14) LINE 4" 10' DASH - 30' SKIP, YELLOW (TYP.)                                 |
| (4) LINE 24" SOLID WHITE STOP BAR (TYP.)                                       | (8) LINE 6" SKIP-DASH WHITE, 2' DASH - 6' SKIP (TYP.)      | (15) LINE 12", YELLOW PAINTED MEDIAN DIAGONAL,<br>45°, (TYP.)                   |
|  | (9) LINE 6" SOLID WHITE, TURN LANE OR CROSSWALK (TYP.)     |   |
|  | (10) LINE 12", YELLOW PAINTED MEDIAN DIAGONAL, 45°, (TYP.) |   |
|  | (11) LINE 24" SOLID WHITE STOP BAR (TYP.)                  |   |

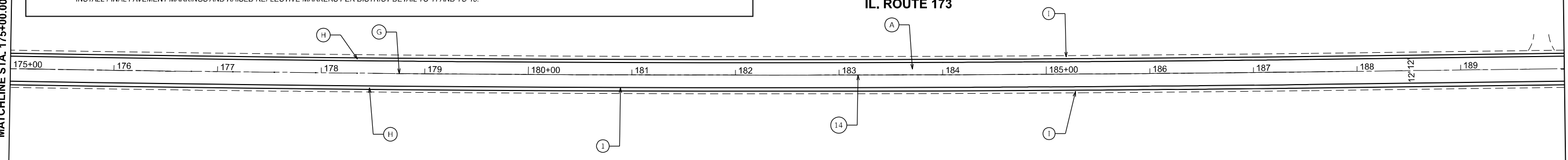
INSTALL FINAL PAVEMENT MARKINGS AND RAISED REFLECTIVE MARKERS PER DISTRICT DETAIL TC-11 AND TC-13.



IL. ROUTE 173

MATCHLINE STA. 175+00.00

MATCHLINE STA. 190+00.00



MODEL: IL173\_EX - RdwayPlan 11  
FILE NAME: c:\p\work\173\173\concor.mullane@illinois.gov\10987243D\121422-shr-plan.dgn

USER NAME = connor.mullane	DESIGNED -	REVISED -
	DRAWN -	REVISED -
	CHECKED -	REVISED -
PLOT DATE = 10/17/2024	DATE -	REVISED -

STATE OF ILLINOIS  
DEPARTMENT OF TRANSPORTATION

EXISTING AND PROPOSED ROADWAY PLAN  
IL. ROUTE 173 (BOONE COUNTY LINE TO FLAT IRON RD.)

SCALE: 1"=50' SHEET OF 7 SHEETS STA. 160+00.00 TO STA. 190+00.00

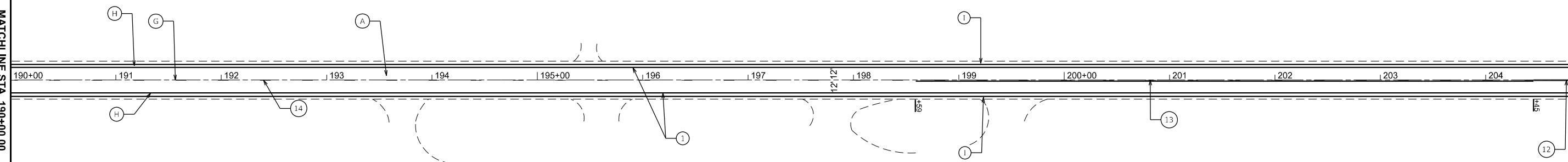
F.A.P. RTE.	SECTION	COUNTY	TOTAL SHEETS	SHEET NO.
303	FAP 0303 22 RS	MCHENRY	26	12
CONTRACT NO. 62R95				
ILLINOIS FED. AID PROJECT				



IL. ROUTE 173

MATCHLINE STA. 190+00.00

MATCHLINE STA. 205+00.00



**PROPOSED ROADWAY WORK**

- |   |   |
|---|---|
| (A) PROP. HMA SURF REM 1 1/2"<br>PROP. HMA SC IL-9.5 MIX "D", N70, 1 1/2" | (F) PROP. PCC SIDEWALK CURB RAMP IMPROVEMENT<br>DETAILED DESIGN     |
| (B) PROP. HMA SURF REM BUTT JT  | (G) PROP. 16" CENTERLINE RUMBLE STRIP                               |
| (C) PROP. PCC SIDEWALK CURB RAMP IMPROVEMENT<br>PD-01C                    | (H) PROP. 8" SHOULDER RUMBLE STRIP                                  |
| (D) PROP. PCC SIDEWALK CURB RAMP IMPROVEMENT<br>PD-02B                    | (I) PROP. AGG. WEDGE SHOULDER<br>PROP. GRADING AND SHAPING SHOULDER |
| (E) PROP. PCC SIDEWALK CURB RAMP IMPROVEMENT<br>PD-02C                    |   |



**PROPOSED PAVEMENT STRIPING LEGEND**

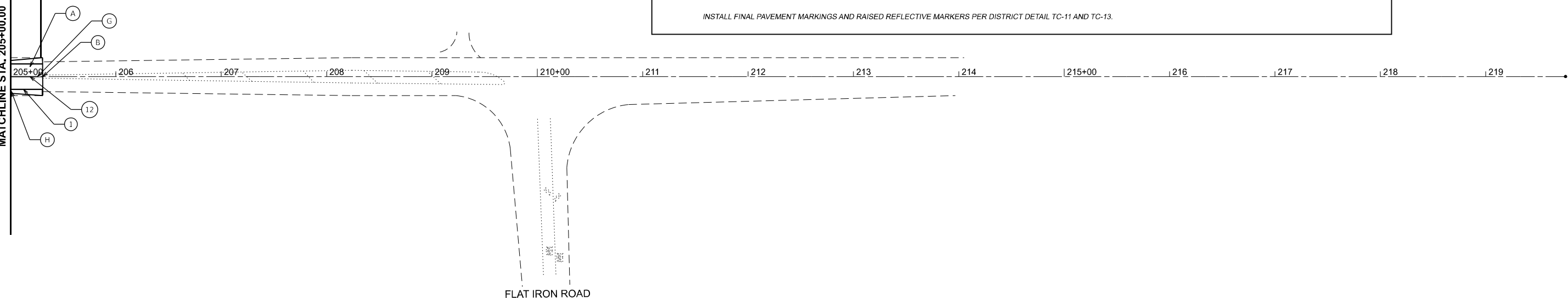
- | THERMOPLASTIC  | URETHANE   | HOT SPRAY   |
|--|--|---|
| (1) LINE 4" SOLID WHITE (TYP.)   | (5) LETTERS & SYMBOLS, SOLID, WHITE (TYP.)                 | (12) LINE 4" DOUBLE SOLID YELLOW, 2 @ 11" C-C (TYP.)                            |
| (2) LINE 4" DOUBLE SOLID YELLOW, 2 @ 11" C-C (TYP.)                            | (6) LINE 4" DOUBLE SOLID YELLOW, 2 @ 11" C-C (TYP.)        | (13) LINE 4" SINGLE CONTINUOUS AND<br>SINGLE 10' DASH - 30' SKIP, YELLOW (TYP.) |
| (3) LINE 4" SINGLE CONTINUOUS AND<br>SINGLE 10' DASH - 30' SKIP, YELLOW (TYP.) | (7) LINE 4" SOLID WHITE (TYP.)                             | (14) LINE 4" 10' DASH - 30' SKIP, YELLOW (TYP.)                                 |
| (4) LINE 24" SOLID WHITE STOP BAR (TYP.)                                       | (8) LINE 6" SKIP-DASH WHITE, 2' DASH - 6' SKIP (TYP.)      | (15) LINE 12", YELLOW PAINTED MEDIAN DIAGONAL,<br>45°, (TYP.)                   |
|  | (9) LINE 6" SOLID WHITE, TURN LANE OR CROSSWALK (TYP.)     |   |
|  | (10) LINE 12", YELLOW PAINTED MEDIAN DIAGONAL, 45°, (TYP.) |   |
|  | (11) LINE 24" SOLID WHITE STOP BAR (TYP.)                  |   |

INSTALL FINAL PAVEMENT MARKINGS AND RAISED REFLECTIVE MARKERS PER DISTRICT DETAIL TC-11 AND TC-13.

IL. ROUTE 173

MATCHLINE STA. 205+00.00

PROJECT ENDS  
STA. 205 + 31



MODEL: IL173\_EX - Rdw/Plan 13  
FILE NAME: c:\p\work\173\concor.mullane@illinois.gov\10987243D121422-shr-plan.dgn

USER NAME = connor.mullane	DESIGNED -	REVISED -
	DRAWN -	REVISED -
	CHECKED -	REVISED -
PLOT DATE = 10/17/2024	DATE -	REVISED -

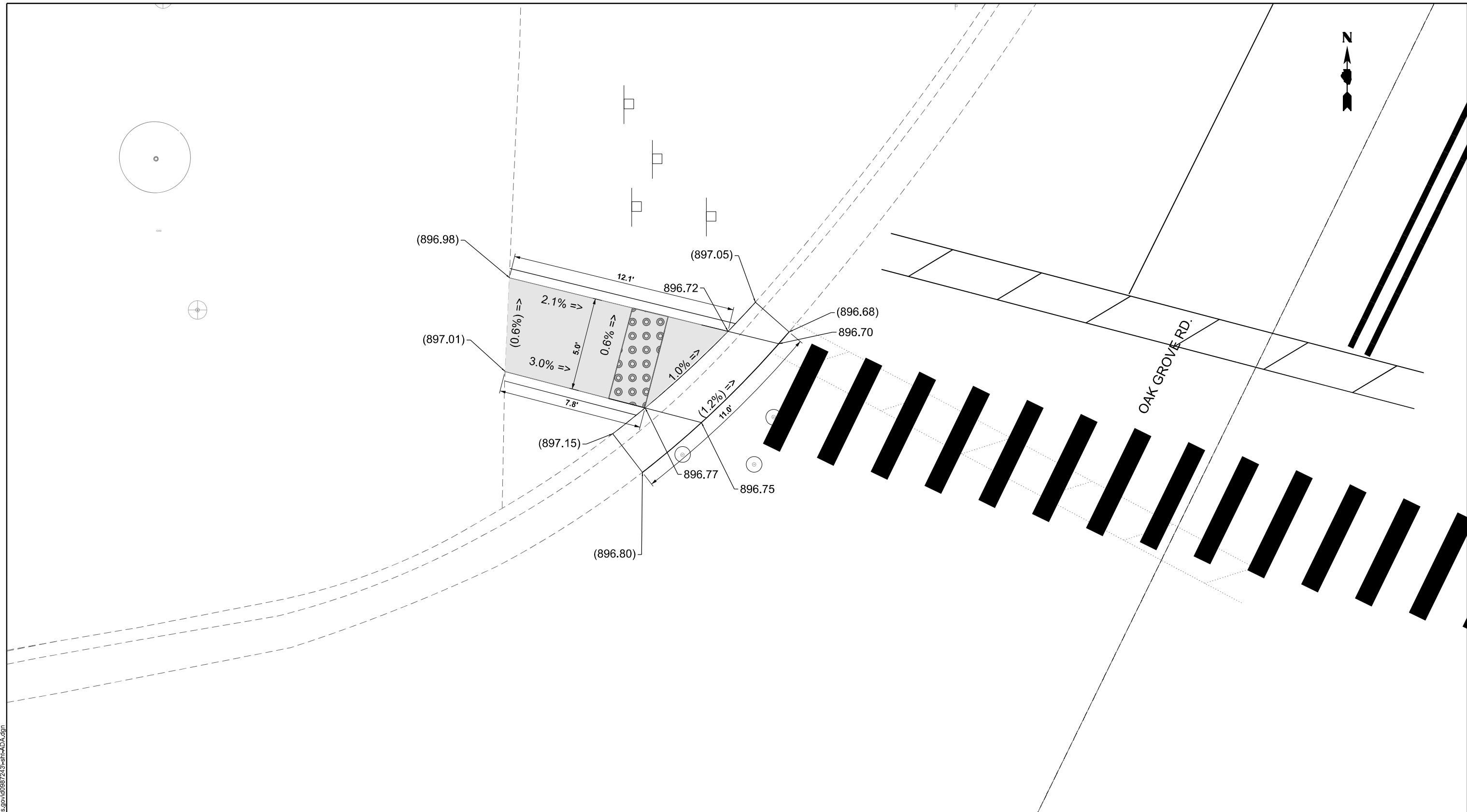
STATE OF ILLINOIS  
DEPARTMENT OF TRANSPORTATION

EXISTING AND PROPOSED ROADWAY PLAN  
IL. ROUTE 173 (BOONE COUNTY LINE TO FLAT IRON RD.)

SCALE: 1"=50' SHEET OF 7 SHEETS STA. 190+00.00 TO STA. 220+00.00

F.A.P. RTE.	SECTION	COUNTY	TOTAL SHEETS	SHEET NO.
303	FAP 0303 22 RS	MCHENRY	26	13
			CONTRACT NO. 62R95	
ILLINOIS FED. AID PROJECT				

MODEL: NW GAS STATION - OAK GROVE (Sheet)  
 FILE NAME: c:\p\work\wtd\connor.mullane@illinois.gov\0987243-shi-AD.A.dgn



REFERENCE BENCHMARK ELEVATION: 898.83  
 BENCHMARK: SE BOLT OF SIGN BASE OF MOBIL GAS STATION SIGN  
 LOCATION: NW CORNER OF IL 173 & OAK GROVE RD

**LEGEND**

xx.xx'

EXISTING LENGTH

PROPOSED SIDE CURB

( ) EXISTING ELEVATION/SLOPE

PROPOSED SIDEWALK

DETECTABLE WARNINGS

SIDEWALK REMOVAL  
 REPLACE W/TOPSOIL & SOD

STATE OF ILLINOIS  
 DEPARTMENT OF TRANSPORTATION

PROPOSED SIDEWALK PLAN  
 IL 173 (BOONE COUNTY LINE TO FLAT IRON RD)

SCALE: 1"=2.5' SHEET OF 1 SHEETS STA. 0+00.00 TO STA. 0+00.00

F.A.P. RTE.	SECTION	COUNTY	TOTAL SHEETS	SHEET NO.
303	FAP 0303 22 RS	MCHENRY	26	14
ILLINOIS			FED. AID PROJECT	

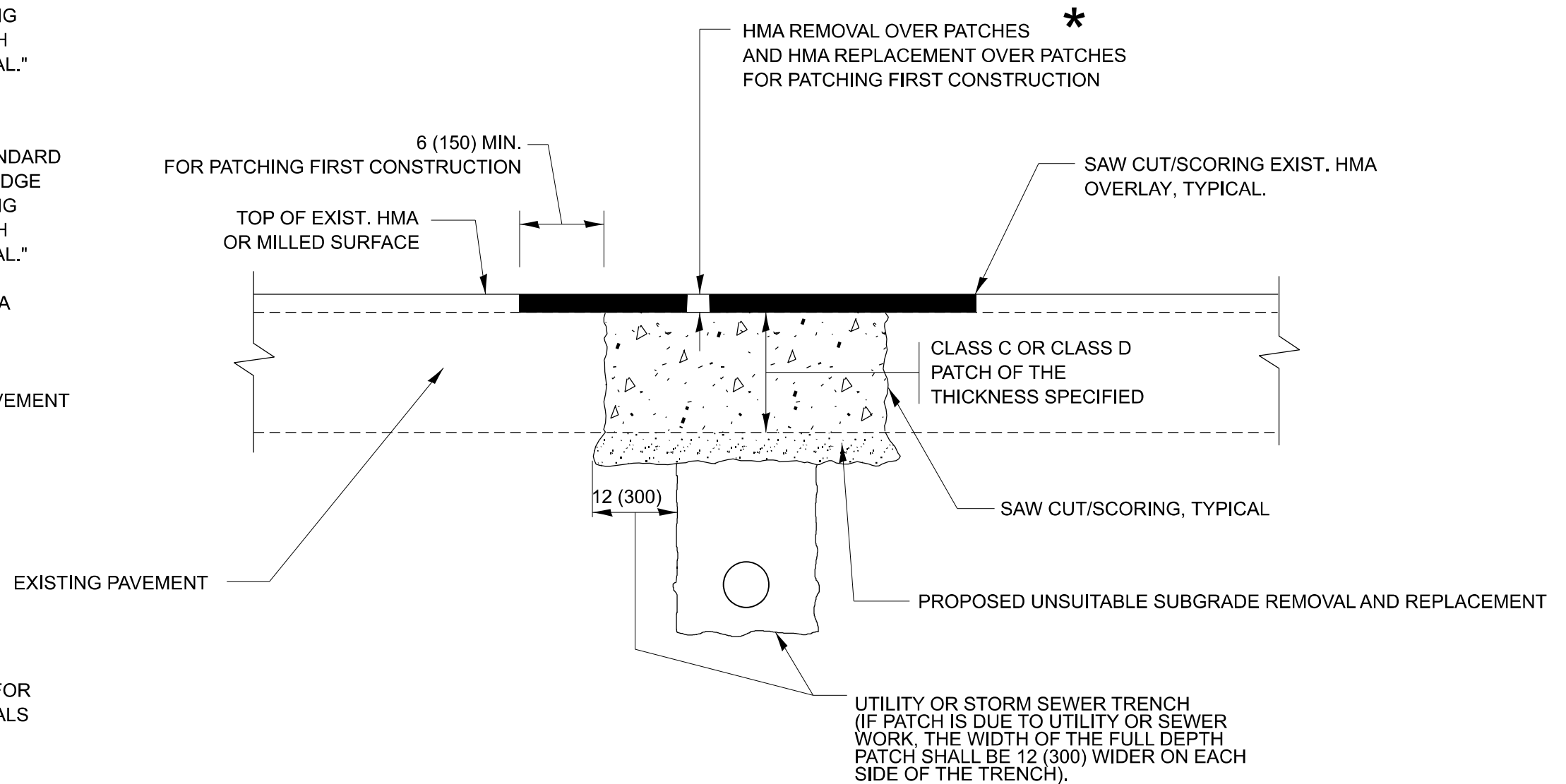
CONTRACT NO. 62R95

## METHOD OF MEASUREMENT

REFER TO SECTION 442 OF THE STANDARD SPECIFICATIONS FOR ROAD AND BRIDGE CONSTRUCTION AND THE RECURRING SPECIAL PROVISION "PATCHING WITH HOT-MIX ASPHALT OVERLAY REMOVAL."

## BASIS OF PAYMENT

1. REFER TO SECTION 442 OF THE STANDARD SPECIFICATIONS FOR ROAD AND BRIDGE CONSTRUCTION AND THE RECURRING SPECIAL PROVISION "PATCHING WITH HOT-MIX ASPHALT OVERLAY REMOVAL."
2. SAW CUT/SCORING OF EXISTING HMA OVERLAY IS INCLUDED IN THE COST OF PAVEMENT PATCHING.
3. SAW CUT/SCORING OF EXISTING PAVEMENT IS INCLUDED IN THE COST OF PAVEMENT PATCHING.



\* SEE TYPICAL SECTIONS FOR THICKNESS AND MATERIALS

## SEQUENCE OF CONSTRUCTION (PATCHING FIRST)

1. REMOVE THE EXISTING HMA MATERIAL OVER THE AREA TO BE PATCHED.
2. REMOVE AND REPLACE WITH CLASS C OR D PATCH.
3. REPLACE HMA MATERIAL OVER THE AREA TO BE PATCHED.

## SEQUENCE OF CONSTRUCTION (MILLING FIRST)

1. MILL HMA FIRST IF THERE IS AT LEAST 4 ½ INCHES OR MORE OF HMA MATERIAL ON TOP OF THE EXISTING PAVEMENT OR IF THE PAVEMENT IS FULL DEPTH HMA. A MINIMUM OF 2 INCHES OF HMA MATERIAL SHALL BE IN PLACE AFTER MILLING.
2. REMOVE AND REPLACE WITH FULL DEPTH CLASS D PATCHES TO TOP OF MILLED SURFACE.

ALL DIMENSIONS ARE IN INCHES (MILLIMETERS) UNLESS OTHERWISE SHOWN.

MODEL: BD-22 (Sheet)  
FILE NAME: c:\p\work\wof\connor.mullane@illinois.gov\0987243-sh-sh-Dist-Sets.dgn

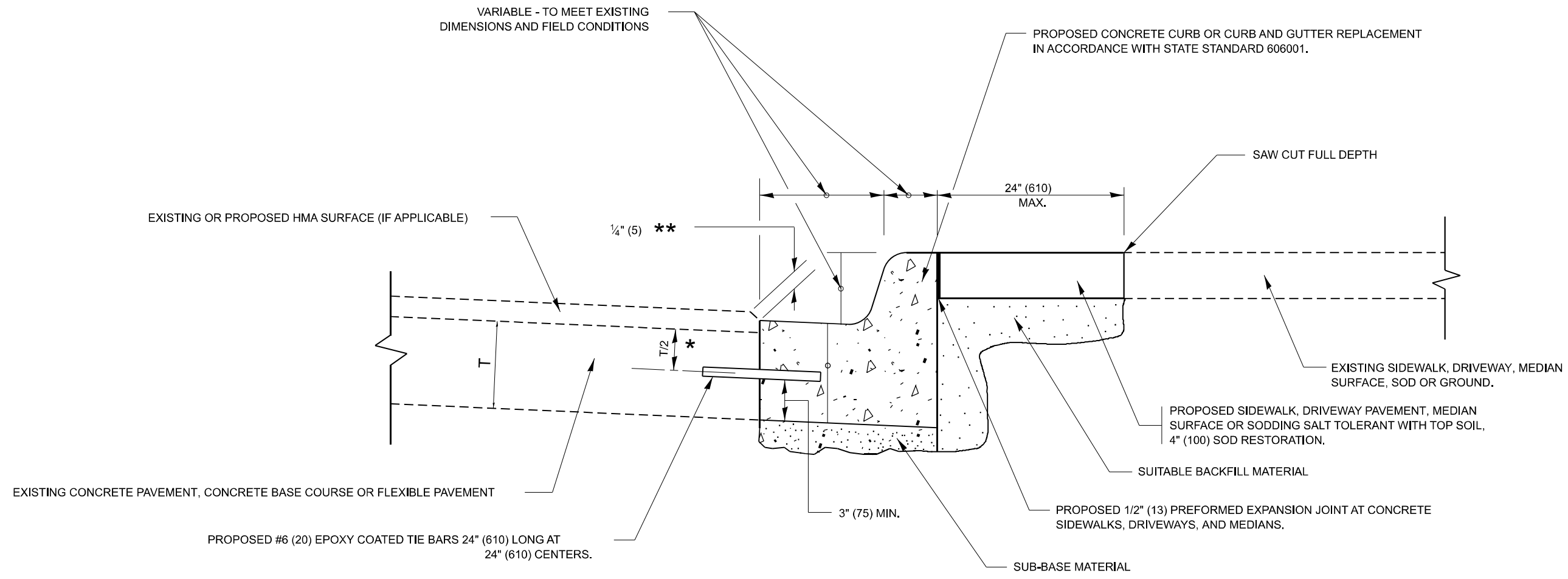
USER NAME = connor.mullane	DESIGNED - R. SHAH	REVISED - R. BORO 01-01-07
	DRAWN -	REVISED - R. BORO 09-04-07
PLOT SCALE = 0.16666633' / in.	CHECKED -	REVISED - K. ENG 10-27-08
PLOT DATE = 10/17/2024	DATE - 10-25-94	REVISED - K. SMITH 11-18-22

STATE OF ILLINOIS  
DEPARTMENT OF TRANSPORTATION

PAVEMENT PATCHING FOR  
HMA SURFACED PAVEMENT

SCALE: NONE SHEET 1 OF 1 SHEETS STA. TO STA.

F.A.P. RTE.	SECTION	COUNTY	TOTAL SHEETS	SHEET NO.
303	FAP 0303 22 RS	MCHENRY	26	015
BD400-04 (BD-22)			CONTRACT NO. 62R95	
ILLINOIS FED. AID PROJECT				



- \* 3" (75) MINIMUM FROM TOP AND BOTTOM OF THE CONCRETE PAVEMENT OR BASE COURSE.
- \*\* IF THE FINAL SURFACE OF THE PAVEMENT IS CONCRETE, THE GUTTER IS TO BE FLUSH WITH THE PAVEMENT.

# CURB OR CURB AND GUTTER REMOVAL AND REPLACEMENT

ALL DIMENSIONS ARE IN INCHES (MILLIMETERS) UNLESS OTHERWISE SHOWN.

MODEL: BD-24 (Sheet)  
FILE NAME: c:\p\work\wv\td\connor.mullane@illinois.gov\0987243-sh-Dis-Shts.dgn

USER NAME = connor.mullane	DESIGNED - A. HOUSEH	REVISED - A. ABBAS 03-21-97
	DRAWN -	REVISED - M. GOMEZ 01-22-01
PLOT SCALE = 0.16666833' / in.	CHECKED -	REVISED - R. BORO 12-15-09
PLOT DATE = 10/17/2024	DATE - 03-11-94	REVISED - K. SMITH 07-11-19

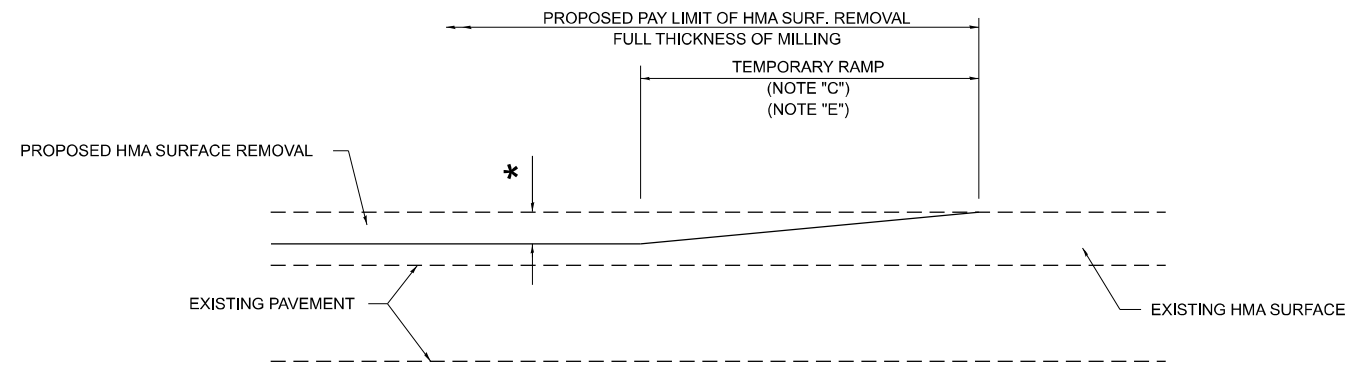
**STATE OF ILLINOIS  
DEPARTMENT OF TRANSPORTATION**

**CURB OR CURB AND GUTTER  
REMOVAL AND REPLACEMENT**

SCALE: NONE    SHEET 1 OF 1 SHEETS    STA.    TO STA.

F.A.P. RTE.	SECTION	COUNTY	TOTAL SHEETS	SHEET NO.
303	FAP 0303 22 RS	MCHENRY	26	016
<b>BD600-06 (BD-24)</b>			CONTRACT NO. 62R95	
ILLINOIS FED. AID PROJECT				

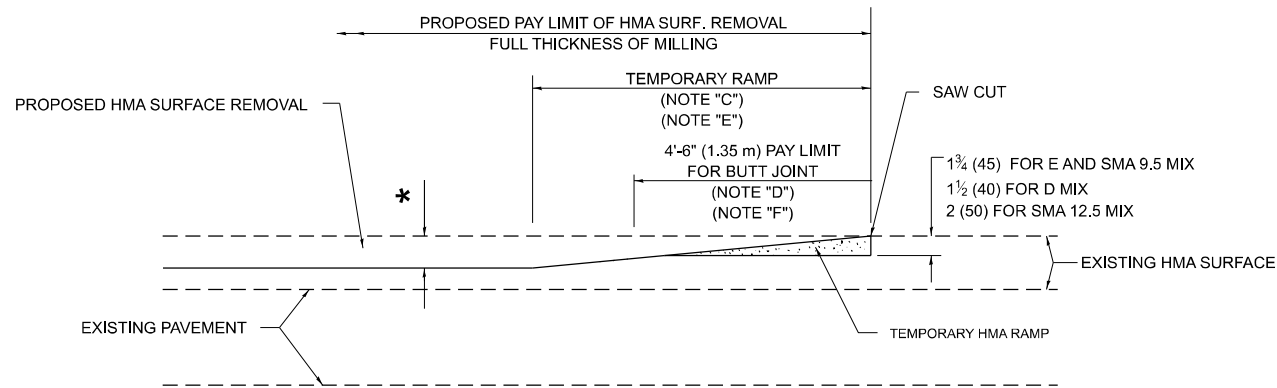




**MILLED TEMPORARY RAMP**

(FOR BUTT JOINT AND HMA TAPER SEE DETAIL BELOW)

**OPTION 1**

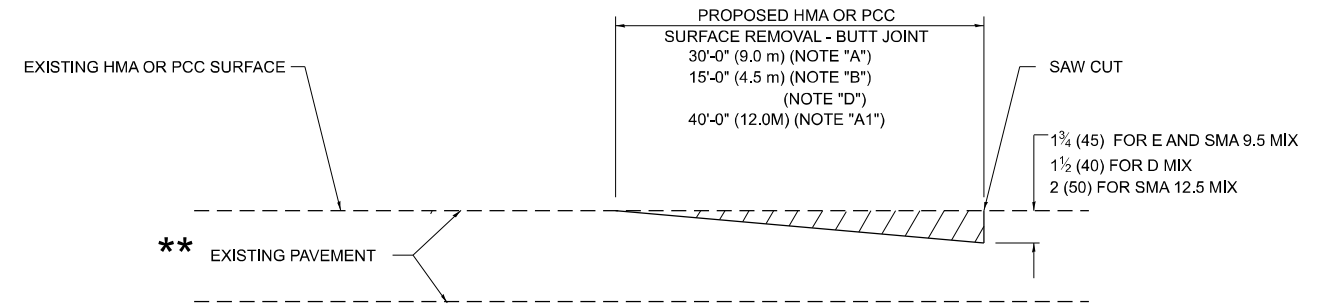


**HMA CONSTRUCTED TEMPORARY RAMP**

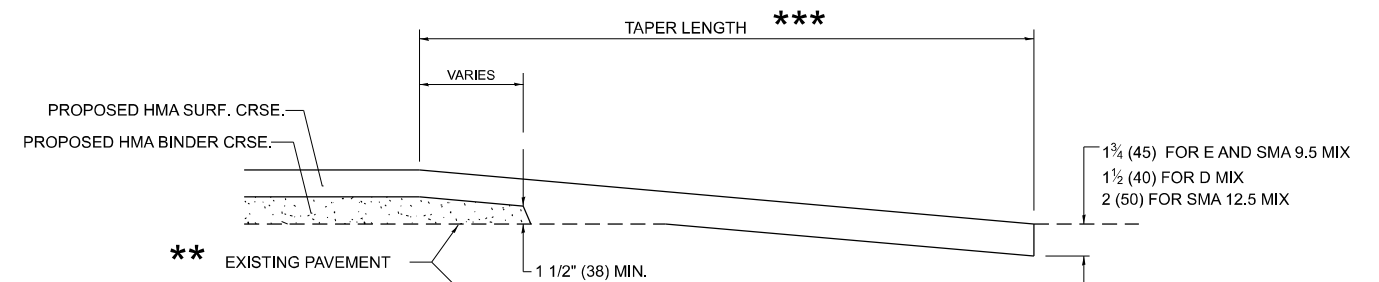
(FOR BUTT JOINT AND HMA TAPER SEE DETAIL BELOW)

**OPTION 2**

**TYPICAL TEMPORARY RAMP**



**BUTT JOINT DETAIL**



**HMA TAPER DETAIL**

**TYPICAL BUTT JOINT AND HMA TAPER FOR RESURFACING ONLY**

\*\* PC CONCRETE, HMA OR HMA RESURFACED PAVEMENT.

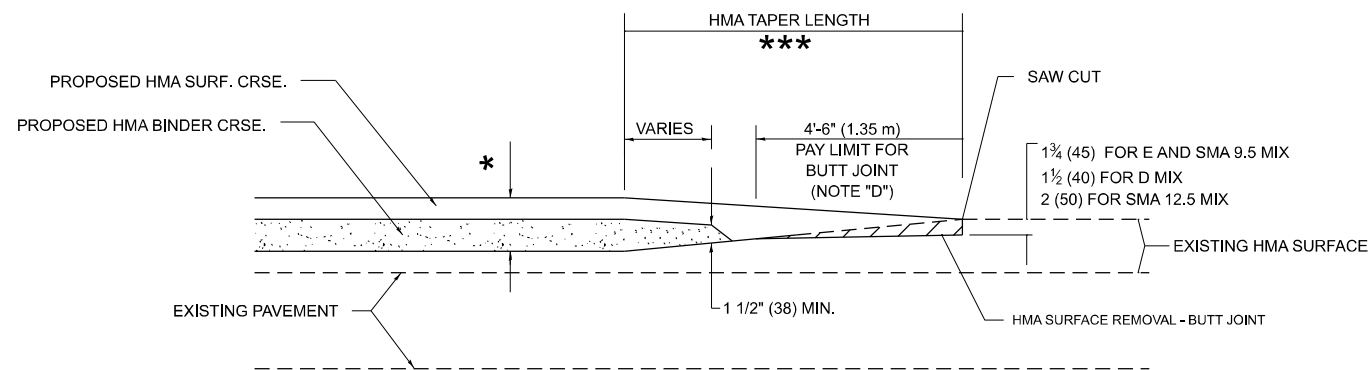
**GENERAL NOTES**

- A. MAINLINE ARTERIAL ROADWAYS AND MAJOR SIDE ROADS.
- A1. INTERSTATES
- B. MINOR SIDE ROADS.
- C. THE TEMP. RAMP SHALL BE CONSTRUCTED IMMEDIATELY UPON REMOVAL OF THE EXISTING HMA SURFACE.
- D. THE BUTT JOINT SHALL BE CONSTRUCTED IMMEDIATELY PRIOR TO PLACING THE PROPOSED HMA COURSES.
- E. TAPER THE TEMP. RAMP AT A RATE OF 3' - 4" (1.02m) PER 1 INCH (25 mm) OF MILLING THICKNESS.  
\* SEE TYPICAL SECTIONS FOR MILLING THICKNESS.
- F. SEE ARTICLE 406.08 AND 406.14 OF THE STANDARD SPECIFICATIONS FOR "HMA AND/OR PCC SURFACE REMOVAL, BUTT JOINT".  
\*\*\*  
20'-0" (6.1 m) PER 1 (25) RESURFACING (NOTE "A")  
10'-0" (3.0 m) PER 1 (25) RESURFACING (NOTE "B")

**BASIS OF PAYMENT**

- 1. THE BUTT JOINT WILL BE PAID FOR AT THE CONTRACT UNIT PRICE PER SQUARE YARD (SQUARE METER) FOR "HOT-MIX ASPHALT SURFACE REMOVAL - BUTT JOINT" OR FOR "PORTLAND CEMENT CONCRETE SURFACE REMOVAL- BUTT JOINT".
- 2. THE TEMPORARY RAMP AND SAW CUT SHALL BE INCLUDED IN THE UNIT COST FOR HMA OR PCC SURFACE REMOVAL-BUTT JOINT.

ALL DIMENSIONS ARE IN INCHES (MILLIMETERS) UNLESS OTHERWISE SHOWN.



**BUTT JOINT AND HMA TAPER**

**TYPICAL BUTT JOINT AND HMA TAPER FOR MILLING AND RESURFACING**

MODEL: BD-32 (Sheet)  
FILE NAME: c:\paw\_wor\k\w\tdot\connor.mullane@illinois.gov\d0987243-sh-32\sh-32\stis.dgn

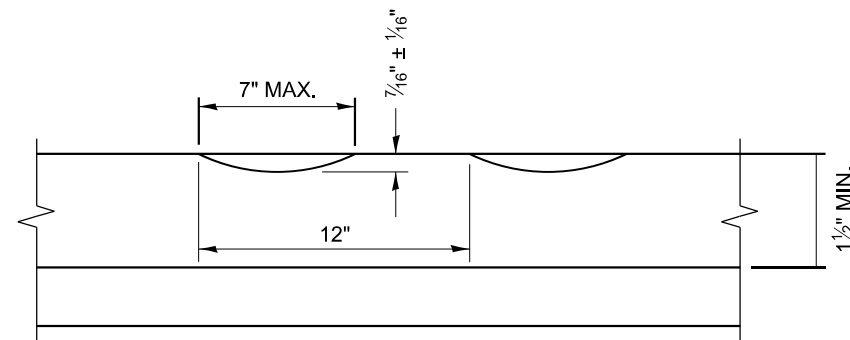
USER NAME = connor.mullane	DESIGNED - M. DE YONG	REVISED - A. ABBAS 03-21-97
	DRAWN -	REVISED - M. GOMEZ 04-06-01
PLOT SCALE = 0.16666633' / in.	CHECKED -	REVISED - R. BORO 01-01-07
PLOT DATE = 10/17/2024	DATE - 06-13-90	REVISED - K. SMITH 11-18-22

STATE OF ILLINOIS  
DEPARTMENT OF TRANSPORTATION

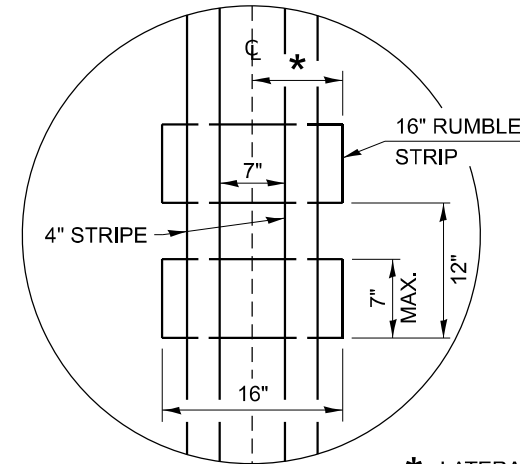
**BUTT JOINT AND HMA TAPER DETAILS**

SCALE: NONE SHEET 1 OF 1 SHEETS STA. TO STA.

F.A.P RTE.	SECTION	COUNTY	TOTAL SHEETS	SHEET NO.
303	FAP 0303 22 RS	MCHENRY	26	017
<b>BD400-05 BD-32</b>		CONTRACT NO. 62R95		
ILLINOIS FED. AID PROJECT				



**SECTION A-A**



\* LATERAL DEVIATION SHALL NOT EXCEED ONE INCH IN 100 FEET.

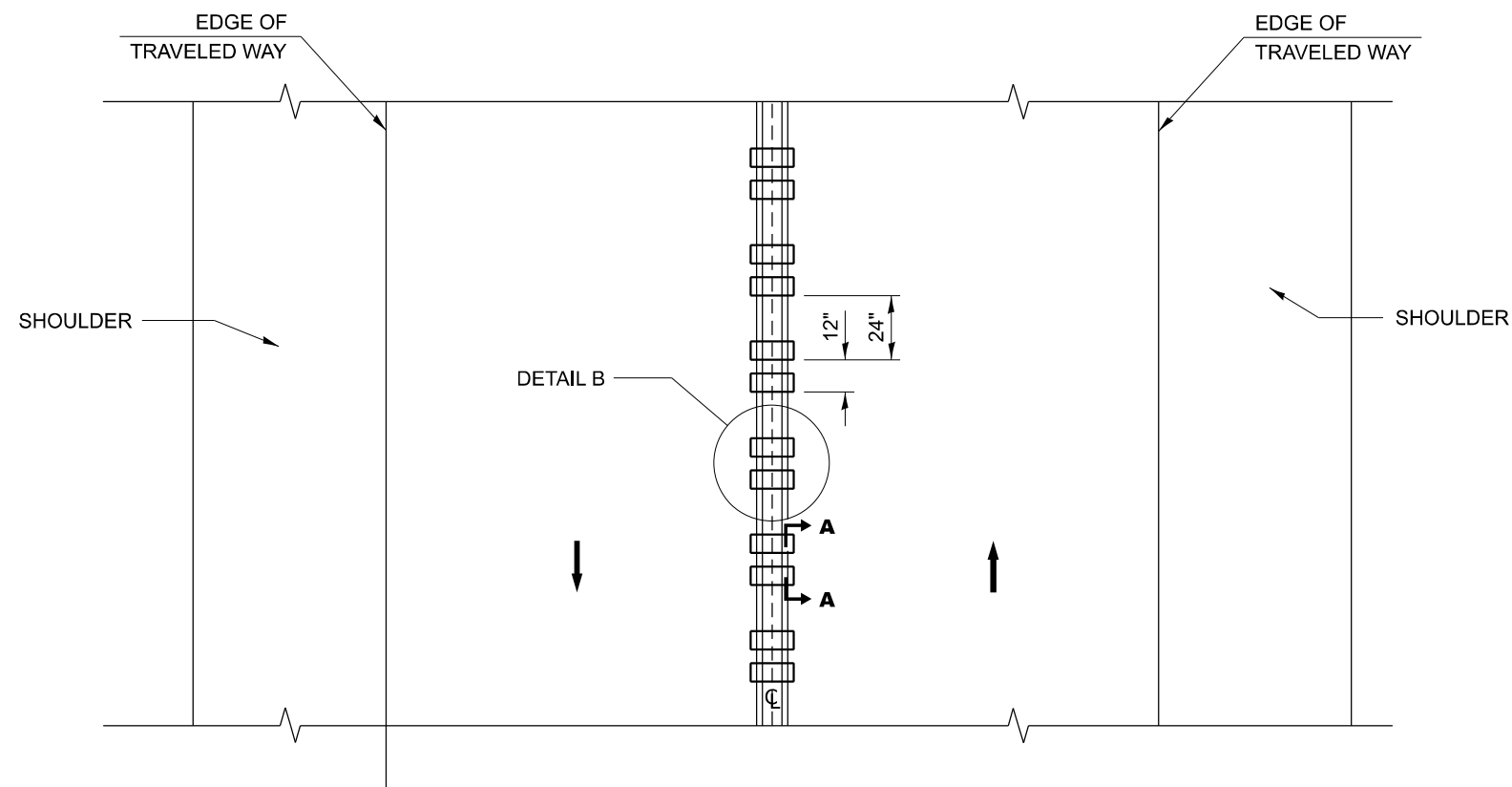
**DETAIL B**

**GENERAL NOTES**

1. CENTERLINE RUMBLE STRIPS SHALL BE CONSTRUCTED ACCORDING TO SECTION 642 ALONG THE CENTERLINE OF PAVEMENT.
2. SEE STANDARD 780001 FOR OTHER STRIPING LAYOUTS.
3. RUMBLE STRIPS SHALL NOT BE PLACED ON BRIDGES.
4. ALL RUMBLE STRIPS SHALL BE MILLED.
5. CENTERLINE RUMBLE STRIPS SHALL BE CONTINUOUS THROUGH CONNECTIONS OF SIDEROADS WITH NO LEFT TURN LANES.
6. DISCONTINUE CENTERLINE RUMBLE STRIPS THROUGH THE LIMITS OF ALL LEFT TURN LANES, INCLUDING ANY LANE TAPER SECTIONS.
7. AFTER RUMBLE STRIPS ARE INSTALLED, THE PAVEMENT SURFACE SHALL BE SWEEPED CLEAN PRIOR TO THE PLACEMENT OF THE NEW PAVEMENT MARKINGS.
8. WHERE USED, ADJUST SPACING OF RAISED REFLECTIVE PAVEMENT MARKERS TO FALL IN WIDER GAP BETWEEN RUMBLE STRIPS.

**BASIS OF PAYMENT**

1. THIS WORK WILL BE PAID FOR AT THE CONTRACT UNIT PRICE PER FOOT FOR CENTERLINE-RUMBLE STRIP OF THE WIDTH SPECIFIED.
2. HOT-SPRAY THERMOPLASTIC PAVEMENT MARKING WILL BE USED OVER THE RUMBLE STRIPS, AND WILL BE PAID FOR SEPARATELY.



**TWO-WAY ROAD**

MODEL: BD-55 (Sheet)  
FILE NAME: c:\p\work\wtd\connor.mullane@illinois.gov\0987243-sh-Dis-Sists.dgn

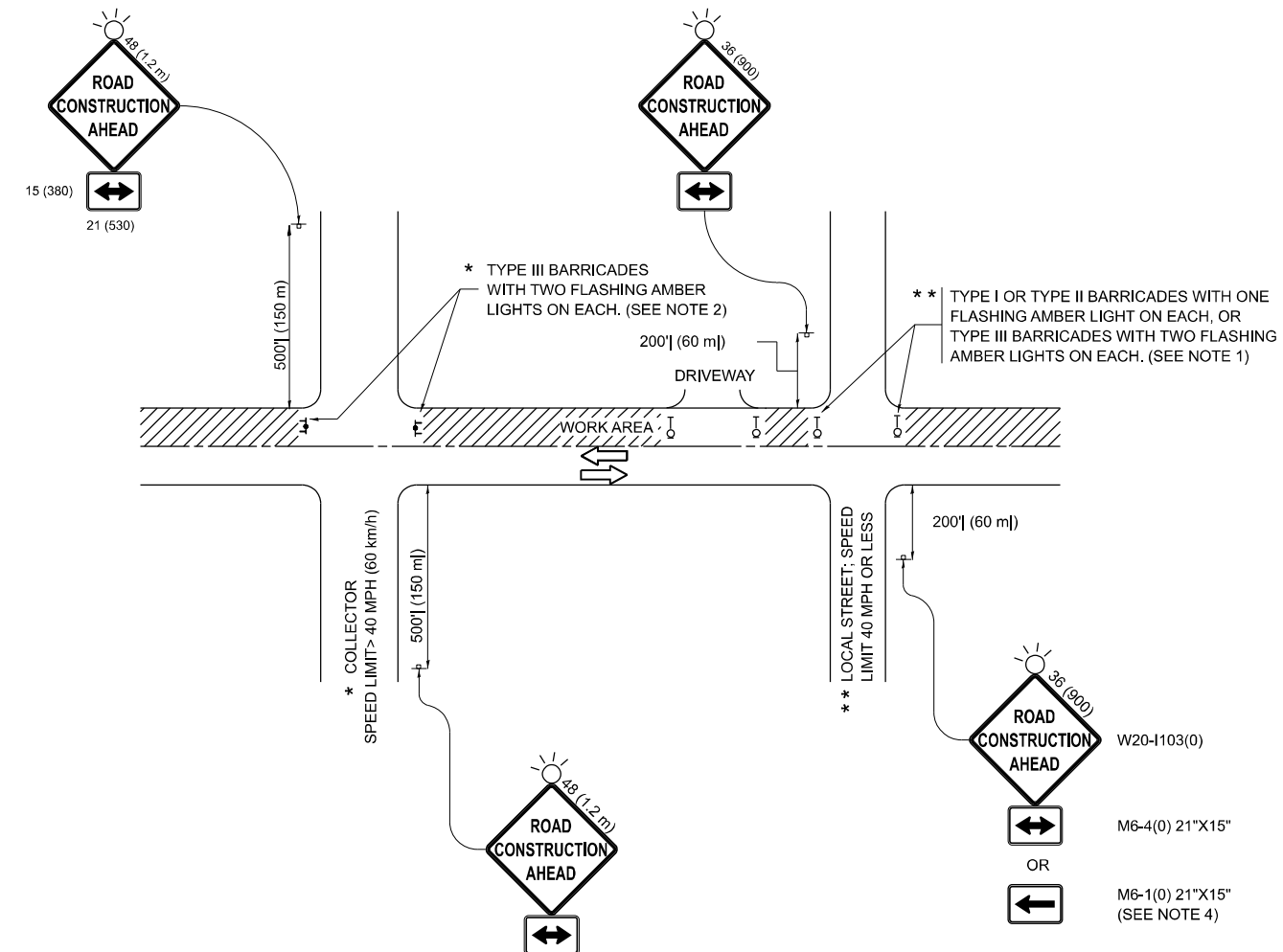
USER NAME = connor.mullane	DESIGNED - R. BORO	REVISED - K. SMITH 11-18-22
PLOT SCALE = 0.16666833' / in.	CHECKED -	REVISED -
PLOT DATE = 10/17/2024	DATE - 08-06-2012	REVISED -

**STATE OF ILLINOIS  
DEPARTMENT OF TRANSPORTATION**

**RUMBLE STRIPS FOR CENTERLINE, NON-FREEWAY**

SCALE: NONE SHEET 1 OF 1 SHEETS STA. TO STA.

F.A.P. RTE.	SECTION	COUNTY	TOTAL SHEETS	SHEET NO.
303	FAP 0303 22 RS	MCHENRY	26	018
<b>BD 55</b>			CONTRACT NO. 62R95	
ILLINOIS FED. AID PROJECT				



**NOTES:**

1. SIDE ROAD WITH A SPEED LIMIT OF 40 MPH (60 km/h) OR LESS AS SHOWN ON THE DRAWING AND AS DIRECTED BY THE ENGINEER:
  - a) ONE "ROAD CONSTRUCTION AHEAD" SIGN 36 x 36 (900x900) WITH A FLASHER MOUNTED ON IT APPROXIMATELY 200' (60 m) IN ADVANCE OF THE MAIN ROUTE.
  - b) THE CLOSED PORTION OF THE MAIN ROUTE SHALL BE PROTECTED BY BLOCKING WITH TYPE I, TYPE II OR TYPE III BARRICADES, 1/3 OF THE CROSS SECTION OF THE CLOSED PORTION.
2. SIDE ROAD WITH A SPEED LIMIT GREATER THAN 40 MPH (60 km/h) AS SHOWN ON THE DRAWING AND AS DIRECTED BY THE ENGINEER:
  - a) ONE "ROAD CONSTRUCTION AHEAD" SIGN 48 x 48 (1.2 m x 1.2 m) WITH A FLASHER MOUNTED ON IT APPROXIMATELY 500' (150 m) IN ADVANCE OF THE MAIN ROUTE.
  - b) THE CLOSED PORTION OF THE MAIN ROUTE SHALL BE PROTECTED BY BLOCKING WITH TYPE III BARRICADES, 1/2 OF THE CROSS SECTION OF THE CLOSED PORTION.
3. CONES MAY BE SUBSTITUTED FOR BARRICADES OR DRUMS AT HALF THE SPACING DURING DAY OPERATIONS. CONES SHALL BE A MINIMUM OF 28 (710) IN HEIGHT.
4. WHEN THE SIDE ROAD LIES BETWEEN THE BEGINNING OF THE MAINLINE SIGNING AND THE WORK ZONE, A SINGLE HEADED ARROW (M6-1) SHALL BE USED IN LIEU OF THE DOUBLE HEADED ARROW (M6-4).
5. WHEN WORK IS BEING PERFORMED ON A SIDE ROAD OR DRIVEWAY, FOLLOW THE APPLICABLE STANDARD(S). THE DIRECTIONAL ARROW (M6-1 OR M6-4) SHALL BE COVERED OR REMOVED WHEN NO LONGER CONSISTENT WITH THE TRAFFIC CONTROL SET-UP.
6. ADVANCE WARNING SIGNS ARE TO BE OMITTED ON DRIVEWAYS UNLESS OTHERWISE SPECIFIED IN THE PLANS OR BY THE ENGINEER.
7. THE TRAFFIC CONTROL AND PROTECTION FOR SIDE ROADS, INTERSECTIONS, AND DRIVEWAYS SHALL BE INCLUDED IN THE COST OF SPECIFIED TRAFFIC CONTROL STANDARDS OR ITEMS.

All dimensions are in inches (millimeters) unless otherwise shown.

MODEL: TC-10 (Sheet)  
FILE NAME: c:\p\work\pwr\connor.mullane@illinois.gov\d0987243-sh-DisStds.dgn

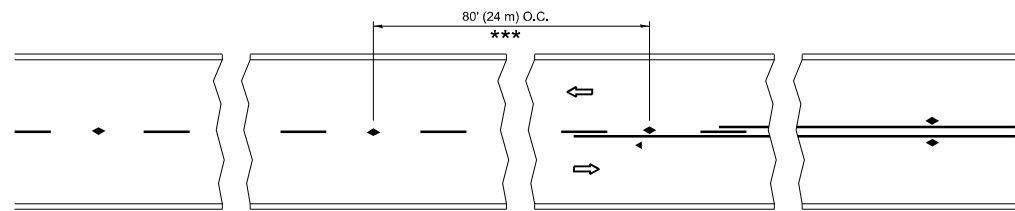
USER NAME = connor.mullane	DESIGNED - L.H.A.	REVISED - T. RAMMACHER 01-06-00
	DRAWN -	REVISED - A. SCHUETZE 07-01-13
PLOT SCALE = 0.16666833" / in.	CHECKED -	REVISED - A. SCHUETZE 09-15-06
PLOT DATE = 10/17/2024	DATE - 06-89	REVISED - D. SENDERAK 05-03-24

**STATE OF ILLINOIS  
DEPARTMENT OF TRANSPORTATION**

**TRAFFIC CONTROL AND PROTECTION FOR  
SIDE ROADS, INTERSECTIONS, AND DRIVEWAYS**

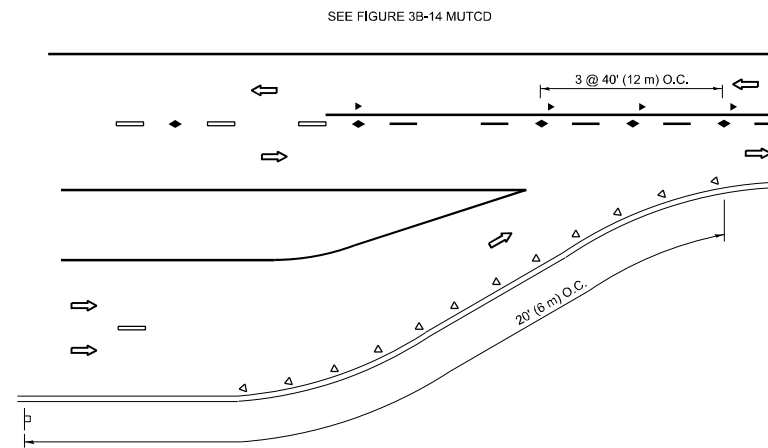
SCALE: SHEET OF SHEETS STA. TO STA.

F.A.P. RTE.	SECTION	COUNTY	TOTAL SHEETS	SHEET NO.
303	FAP 0303 22 RS	MCHENRY	26	019
<b>TC-10</b>			CONTRACT NO. 62R95	
ILLINOIS FED. AID PROJECT				

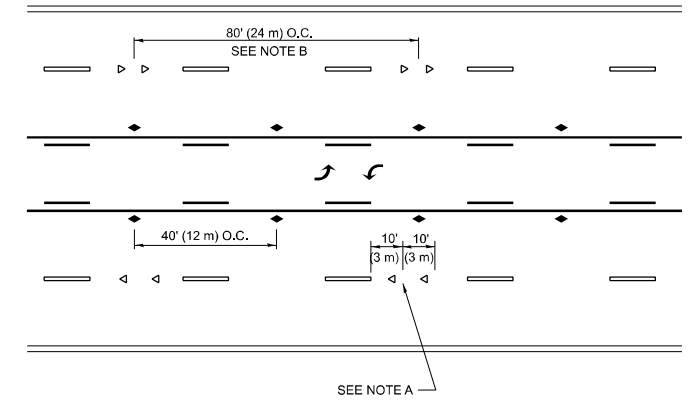


\*\*\* REDUCE TO 40' (12 m) O.C. ON CURVES WITH POSTED OR ADVISORY SPEED 45 M.P.H. (70 km/h) OR LESS.

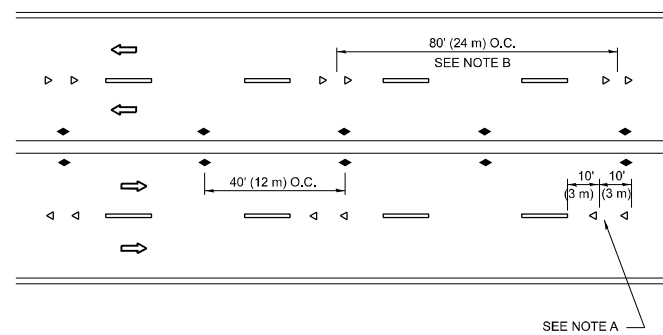
### TWO-LANE/TWO-WAY



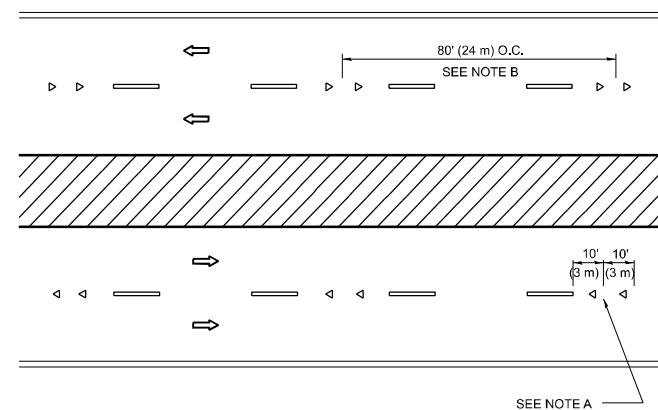
### LANE REDUCTION TRANSITION



### TWO-WAY LEFT TURN



### MULTI-LANE/UNDIVIDED



### MULTI-LANE/DIVIDED

### GENERAL NOTES

1. MARKERS USED WITH DASHED LINES SHALL BE CENTERED IN THE GAP BETWEEN SEGMENTS.
2. MARKERS USED ADJACENT TO SOLID LINES SHALL BE OFFSET 2 TO 3 (50 TO 75) TOWARD TRAFFIC AS SHOWN.
3. MARKERS THROUGH TANGENTS LESS THAN 500' (150 m) IN LENGTH BETWEEN CURVES SHALL BE INSTALLED AT THE LESSER OF THE TWO CURVE SPACINGS.
4. MARKERS ARE TO BE USED ADJACENT TO BOTH SOLID WHITE LINES IN DUAL LEFT TURN LANES

### SYMBOLS

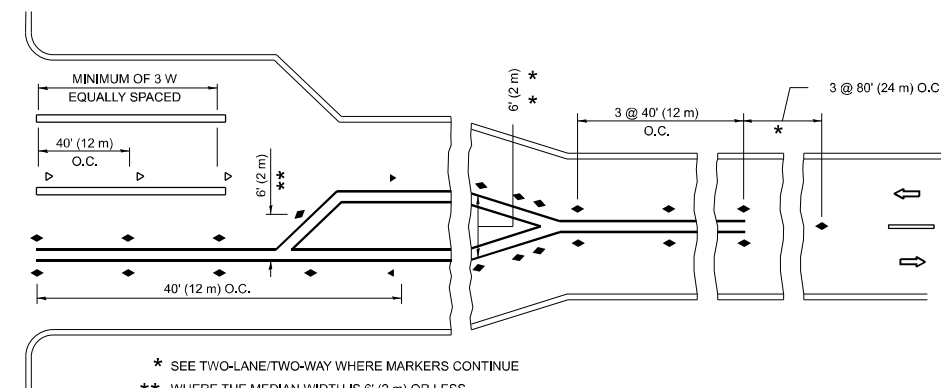
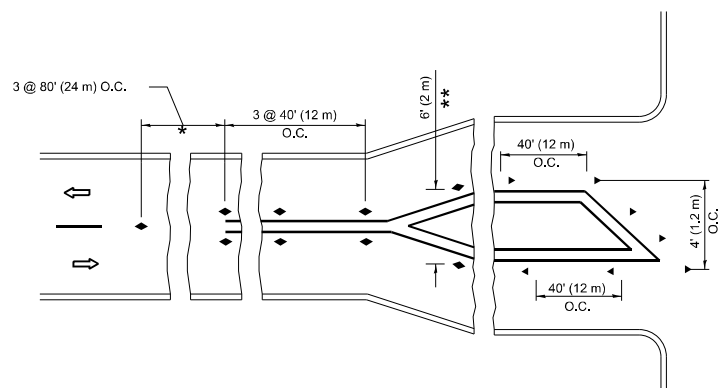
- YELLOW STRIPE
- WHITE STRIPE
- ◀ ONE-WAY AMBER MARKER
- ◀ ONE-WAY CRYSTAL MARKER (W/O)
- ◆ TWO-WAY AMBER MARKER

### LANE MARKER NOTES

- A. USE DOUBLE LANE LINE MARKERS SPACED AS SHOWN.
- B. REDUCE TO 40' (12 m) O.C. ON CURVES WHERE ADVISORY SPEEDS ARE 10 M.P.H (20 km/h) LOWER THAN POSTED SPEEDS.

### DESIGN NOTES

1. DOUBLE LANE LINE MARKERS SHALL BE USED UNLESS SPECIFIED OTHERWISE.
2. EXCEPT AS SHOWN ON THE LANE REDUCTION TRANSITION AND FREEWAY EXIT RAMP DETAIL, MARKERS ARE NOT TO BE SPECIFIED ON RIGHT EDGE LINES.
3. THE EXACT MARKER LIMITS, SPACING, AND COLOR SHALL BE INCLUDED IN THE PLANS WHEN STANDARD SPECIFICATIONS ARE NOT BEING USED.
4. MARKERS SHOULD NOT BE USED ALONGSIDE CURBS EXCEPT FOR EXTREMELY SHORT SECTIONS OF CURBS WHERE NOT MORE THAN TWO MARKERS WOULD BE INVOLVED.



\* SEE TWO-LANE/TWO-WAY WHERE MARKERS CONTINUE  
 \*\* WHERE THE MEDIAN WIDTH IS 6' (2 m) OR LESS USE TWO-WAY MARKERS.

### TURN LANES

All dimensions are in inches (millimeters) unless otherwise shown.

MODEL: TC-11 (Sheet)  
 FILE NAME: c:\p\work\connor.mullane@illinois.gov\0987243-sh-Dis\Std.dgn

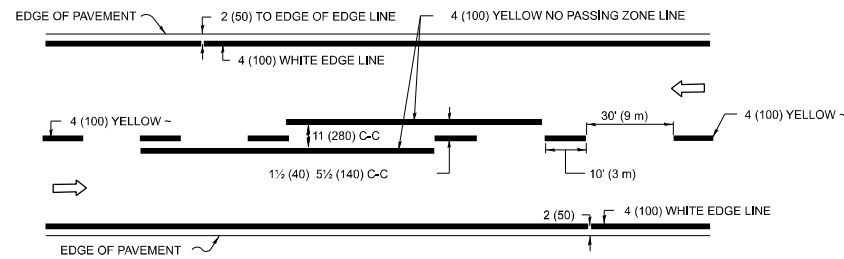
USER NAME = connor.mullane	DESIGNED -	REVISED - T. RAMMACHER 03-12-99
PLOT SCALE = 0.16666833" / in.	DRAWN -	REVISED - T. RAMMACHER 01-06-00
PLOT DATE = 10/17/2024	CHECKED -	REVISED - C. JUCIUS 09-09-09
	DATE -	REVISED - C. JUCIUS 07-01-13

STATE OF ILLINOIS  
 DEPARTMENT OF TRANSPORTATION

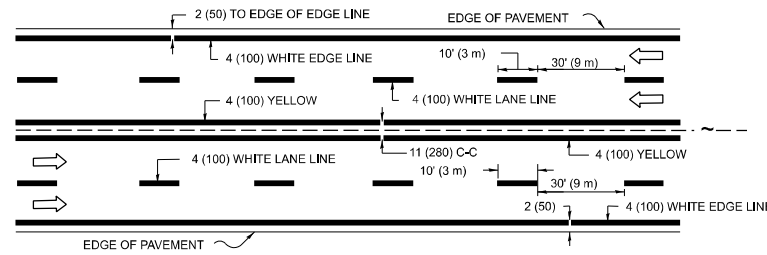
TYPICAL APPLICATIONS  
 RAISED REFLECTIVE PAVEMENT MARKERS (SNOW-PLOW RESISTANT)

SCALE: NONE SHEET 1 OF 1 SHEETS STA. TO STA.

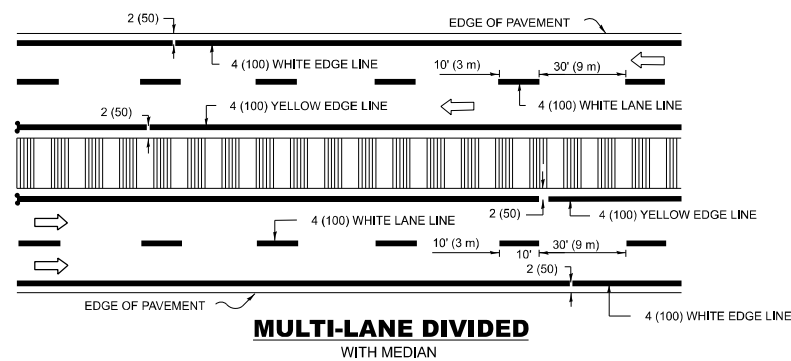
F.A.P. RTE.	SECTION	COUNTY	TOTAL SHEETS	SHEET NO.
303	FAP 0303 22 RS	MCHENRY	26	020
TC-11			CONTRACT NO. 62R95	
ILLINOIS FED. AID PROJECT				



**2-LANE ROADWAY**

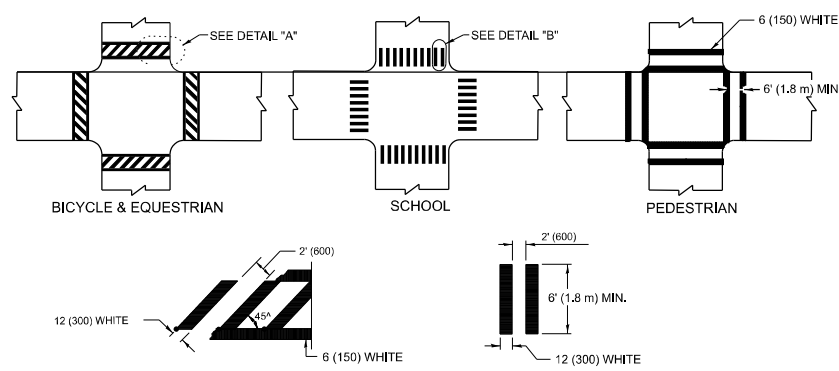


**MULTI-LANE UNDIVIDED**



**MULTI-LANE DIVIDED WITH MEDIAN**

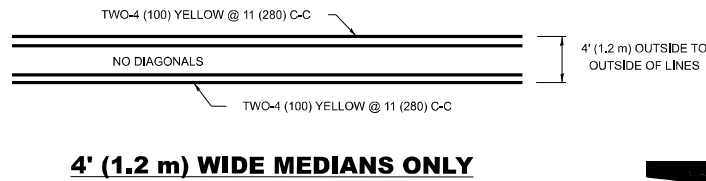
**TYPICAL LANE AND EDGE LINE MARKING**



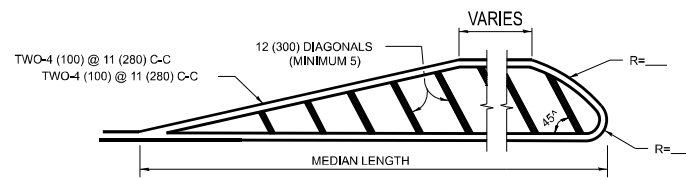
**DETAIL "A"      DETAIL "B"**

**TYPICAL CROSSWALK MARKING**

\* MARKINGS SHALL BE INSTALLED PARALLEL TO THE CENTERLINE OF THE ROAD WHICH IT CROSSES

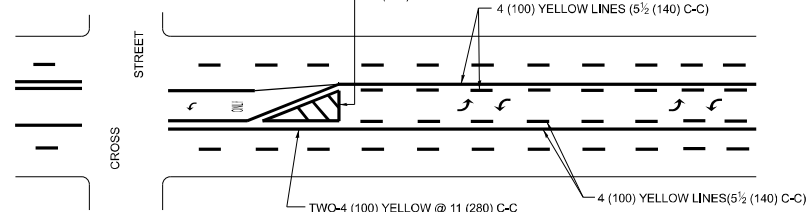


**4' (1.2 m) WIDE MEDIANS ONLY**



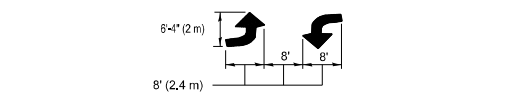
**MEDIANS OVER 4' (1.2 m) WIDE**

DIAGONAL LINE SPACING: 50' (15 m) C-C (LESS THAN 30MPH (50 km/h))  
75' (25 m) C-C 30MPH (50 km/h) TO 45MPH (70 km/h)  
150' (45 m) C-C (MORE THAN 45MPH (70 km/h))



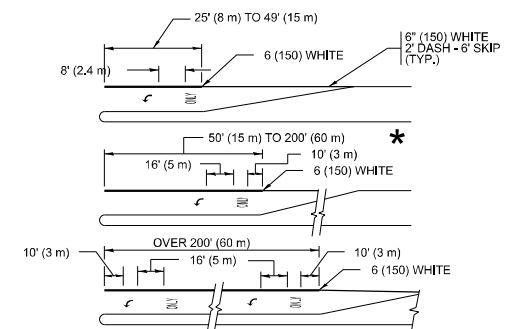
**MEDIAN WITH TWO-WAY LEFT TURN LANE TYPICAL PAINTED MEDIAN MARKING**

A MINIMUM OF TWO PAIRS OF TURN ARROWS SHALL BE USED, WHITE IN COLOR. ADDITIONAL PAIRS SHALL BE PLACED AT 200' (60 m) TO 300' (90 m) INTERVALS.



**MEDIAN WITH TWO-WAY LEFT TURN LANE**

**TYPICAL PAINTED MEDIAN MARKING**

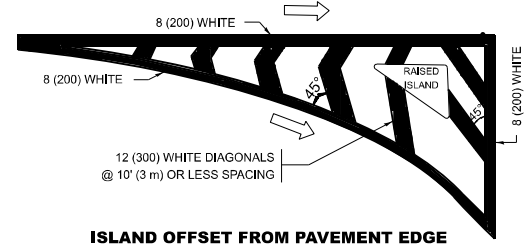


FULL SIZE LETTERS 8' (2.4 m) AND ARROWS SHALL BE USED. AREA = 15.6 SQ. FT. (1.5 m<sup>2</sup>) ONLY AREA = 20.8 SQ. FT. (1.9 m<sup>2</sup>)

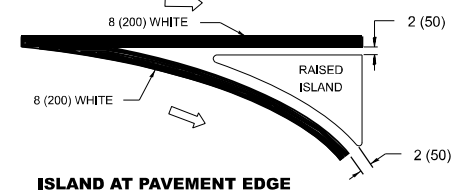
\* TURN LANES IN EXCESS OF 400' (120 m) IN LENGTH MAY HAVE AN ADDITIONAL SET OF ARROW - "ONLY" INSTALLED MIDWAY BETWEEN THE OTHER TWO SETS OF ARROW - "ONLY".

**TYPICAL LEFT (OR RIGHT) TURN LANE**

**TYPICAL TURN LANE MARKING**

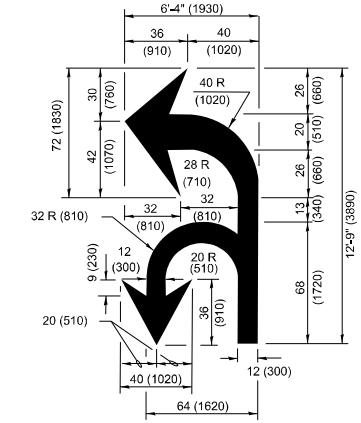


**ISLAND OFFSET FROM PAVEMENT EDGE**

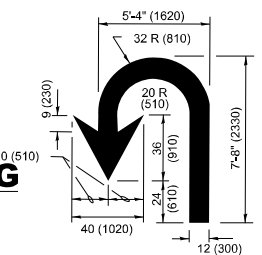


**ISLAND AT PAVEMENT EDGE**

**TYPICAL ISLAND MARKING**



**COMBINATION LEFT AND U-TURN**



**U-TURN**

D(FT)	SPEED LIMIT
345	30
425	35
500	40
580	45
665	50
750	55

**LANE REDUCTION TRANSITION**

\* LANE REDUCTION ARROWS REQUIRED AT SPEEDS OF 45 MPH OR GREATER OR WHEN SPECIFIED IN PLANS.

TYPE OF MARKING	WIDTH OF LINE	PATTERN	COLOR	SPACING / REMARKS
CENTERLINE ON 2 LANE PAVEMENT	4 (100)	SKIP-DASH	YELLOW	10' (3 m) LINE WITH 30' (9 m) SPACE
CENTERLINE ON MULTI-LANE UNDIVIDED PAVEMENT	2 @ 4 (100)	SOLID	YELLOW	11 (280) C-C
NO PASSING ZONE LINES: FOR ONE DIRECTION FOR BOTH DIRECTIONS	4 (100) 2 @ 4 (100)	SOLID SOLID	YELLOW YELLOW	5½ (140) C-C FROM SKIP-DASH CENTERLINE 11 (280) C-C OMIT SKIP-DASH CENTERLINE BETWEEN
LANE LINES	4 (100) 5 (125) ON FREEWAYS	SKIP-DASH SKIP-DASH	WHITE WHITE	10' (3 m) LINE WITH 30' (9 m) SPACE
DOTTED LINES (EXTENSIONS OF CENTER, LANE OR TURN LANE MARKINGS)	SAME AS LINE BEING EXTENDED	SKIP-DASH	SAME AS LINE BEING EXTENDED	2' (600) LINE WITH 6' (1.8 m) SPACE
EDGE LINES	4 (100)	SOLID	YELLOW-LEFT WHITE-RIGHT	OUTLINE MEDIANS IN YELLOW
TURN LANE MARKINGS	6 (150) LINE-FULL SIZE LETTERS & SYMBOLS (8' (2.4m))	SOLID	WHITE	SEE TYPICAL TURN LANE MARKING DETAIL
TWO WAY LEFT TURN MARKING	2 @ 4 (100) EACH DIRECTION 8' (2.4m) LEFT ARROW	SKIP-DASH AND SOLID IN PAIRS	YELLOW WHITE	10' (3 m) LINE WITH 30' (9 m) SPACE FOR SKIP-DASH; 5½ (140) C-C BETWEEN SOLID LINE AND SKIP-DASH LINE SEE TYPICAL TWO-WAY LEFT TURN MARKING DETAIL.
CROSSWALK LINES (PEDESTRIAN) A. DIAGONALS (BIKE & EQUESTRIAN) B. LONGITUDINAL BARS (SCHOOL)	2 @ 6 (150) 12 (300) @ 45° 12 (300) @ 90°	SOLID SOLID SOLID	WHITE WHITE WHITE	NOT LESS THAN 6' (1.8 m) APART 2' (600) APART 2' (600) APART SEE TYPICAL CROSSWALK MARKING DETAILS.
STOP LINES	24 (600)	SOLID	WHITE	PLACE 4' (1.2 m) IN ADVANCE OF AND PARALLEL TO CROSSWALK, IF PRESENT. OTHERWISE, PLACE AT DESIRED STOPPING POINT, PARALLEL TO CROSSROAD CENTERLINE, WHERE POSSIBLE.
PAINTED MEDIANS	2 @ 4 (100) WITH 12 (300) DIAGONALS @ 45° NO DIAGONALS USED FOR 4' (1.2 m) WIDE MEDIANS	SOLID	YELLOW; TWO WAY TRAFFIC WHITE; ONE WAY TRAFFIC	11 (280) C-C FOR THE DOUBLE LINE SEE TYPICAL PAINTED MEDIAN MARKING.
GORE MARKING AND CHANNELIZING LINES	8 (200) WITH 12 (300) DIAGONALS @ 45°	SOLID	WHITE	DIAGONALS: 15' (4.5 m) C-C (LESS THAN 30MPH (50 km/h)) 20' (6 m) C-C 30MPH (50 km/h) TO 45MPH (70 km/h) 30' (9 m) C-C (OVER 45MPH (70 km/h))
RAILROAD CROSSING	24 (600) TRANSVERSE LINES: "RR" IS 6' (1.8 m) LETTERS: 15 (400) LINE FOR "X"	SOLID	WHITE	SEE STATE STANDARD 780001 AREA OF: "R"=3.6 SQ. FT. (0.33 m <sup>2</sup> ) EACH "X"=54.0 SQ. FT. (5.0 m <sup>2</sup> )
SHOULDER DIAGONALS (REQUIRED FOR SHOULDERS ≥ 8')	12 (300) @ 45°	SOLID	WHITE - RIGHT YELLOW - LEFT	50' (15 m) C-C (LESS THAN 30MPH (50 km/h)) 75' (25 m) C-C 30 MPH (50 km/h) TO 45MPH (70 km/h) 150' (45 m) C-C (OVER 45MPH (70 km/h))
U TURN ARROW	SEE DETAIL	SOLID	WHITE	16.3 SF
2 ARROW COMBINATION LEFT AND U TURN	SEE DETAIL	SOLID	WHITE	30.4 SF

FOR FURTHER DETAILS ON PAVEMENT MARKING REFER TO STANDARD SPECIFICATIONS FOR ROAD AND BRIDGE CONSTRUCTION AND STATE STANDARD 780001.

All dimensions are in inches (millimeters) unless otherwise shown.

MODEL: TC-13 (Sheet)  
FILE NAME: c:\p\work\wv\dotconnor.mullane@illinois.gov\d0987243-sh-DisStds.dgn

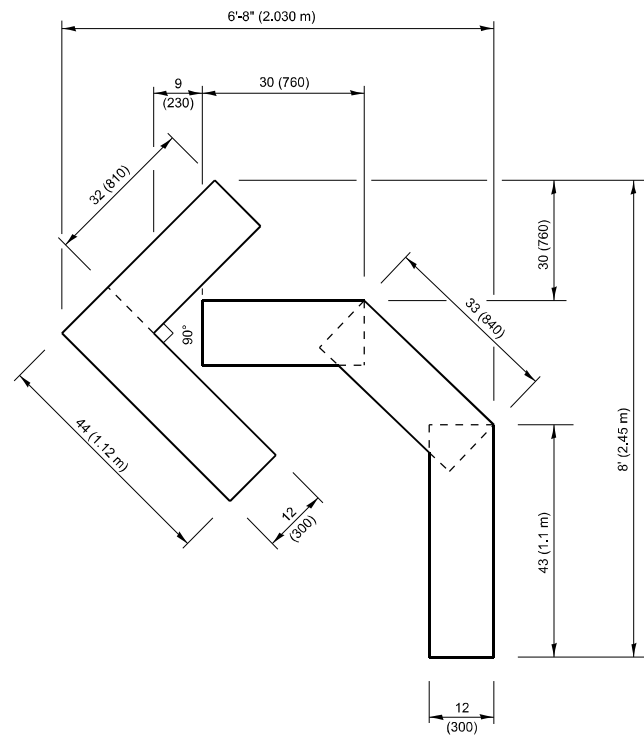
USER NAME = connor.mullane	DESIGNED - EVERS	REVISED - C. JUCIUS 09-09-09
PLOT SCALE = 0.16666833 / in.	CHECKED -	REVISED - C. JUCIUS 07-01-13
PLOT DATE = 10/17/2024	DATE - 03-19-90	REVISED - C. JUCIUS 12-21-15
		REVISED - C. JUCIUS 04-12-16

**STATE OF ILLINOIS DEPARTMENT OF TRANSPORTATION**

**DISTRICT ONE TYPICAL PAVEMENT MARKINGS**

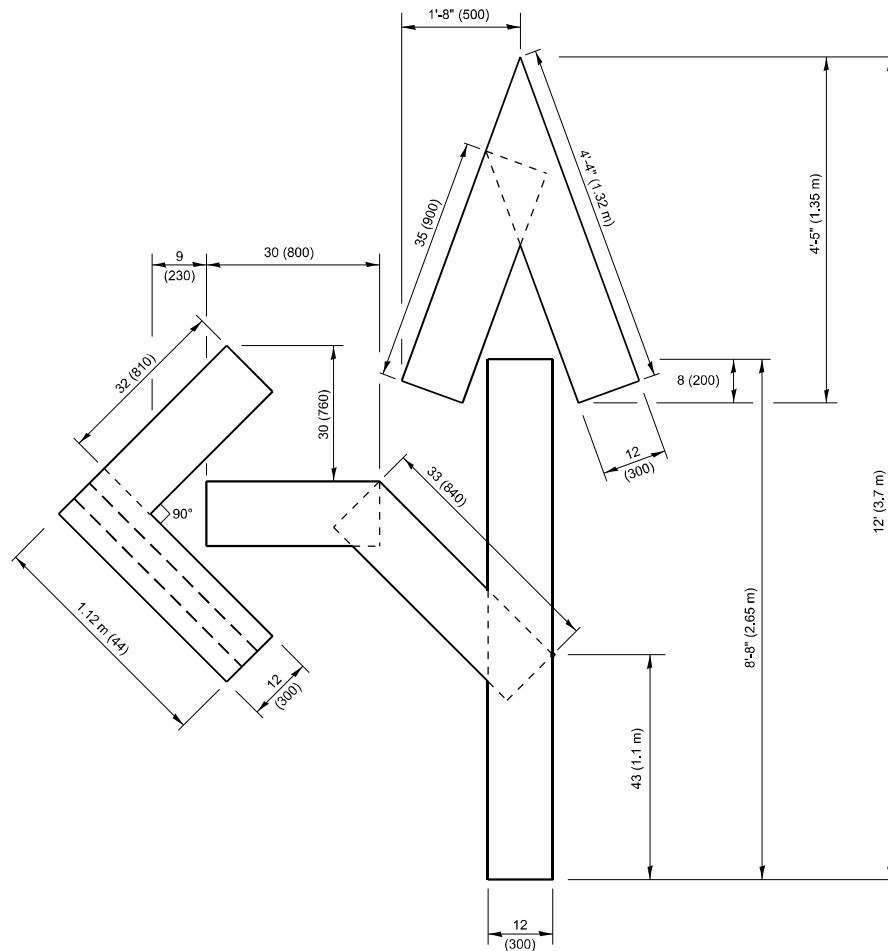
SCALE: NONE SHEET 1 OF 1 SHEETS STA. TO STA.

F.A.P RTE.	SECTION	COUNTY	TOTAL SHEETS	SHEET NO.
303	FAP 0303 22 RS	MCHENRY	26	021
<b>TC-13</b>		CONTRACT NO. 62R95		
ILLINOIS		FED. AID PROJECT		



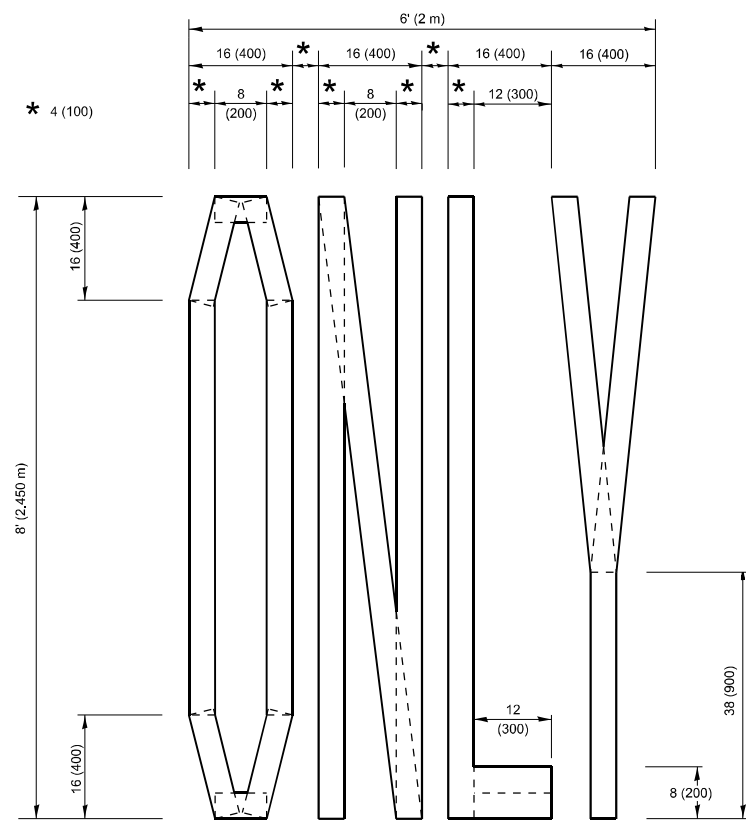
**QUANTITY**

4 (100) LINE = 45.5 ft. (13.9 m)  
15.2 sq. ft. (1.41 sq. m)



**QUANTITY**

4 (100) LINE = 82.5 ft. (25.1 m)  
27.5 sq. ft. (2.53 sq. m)

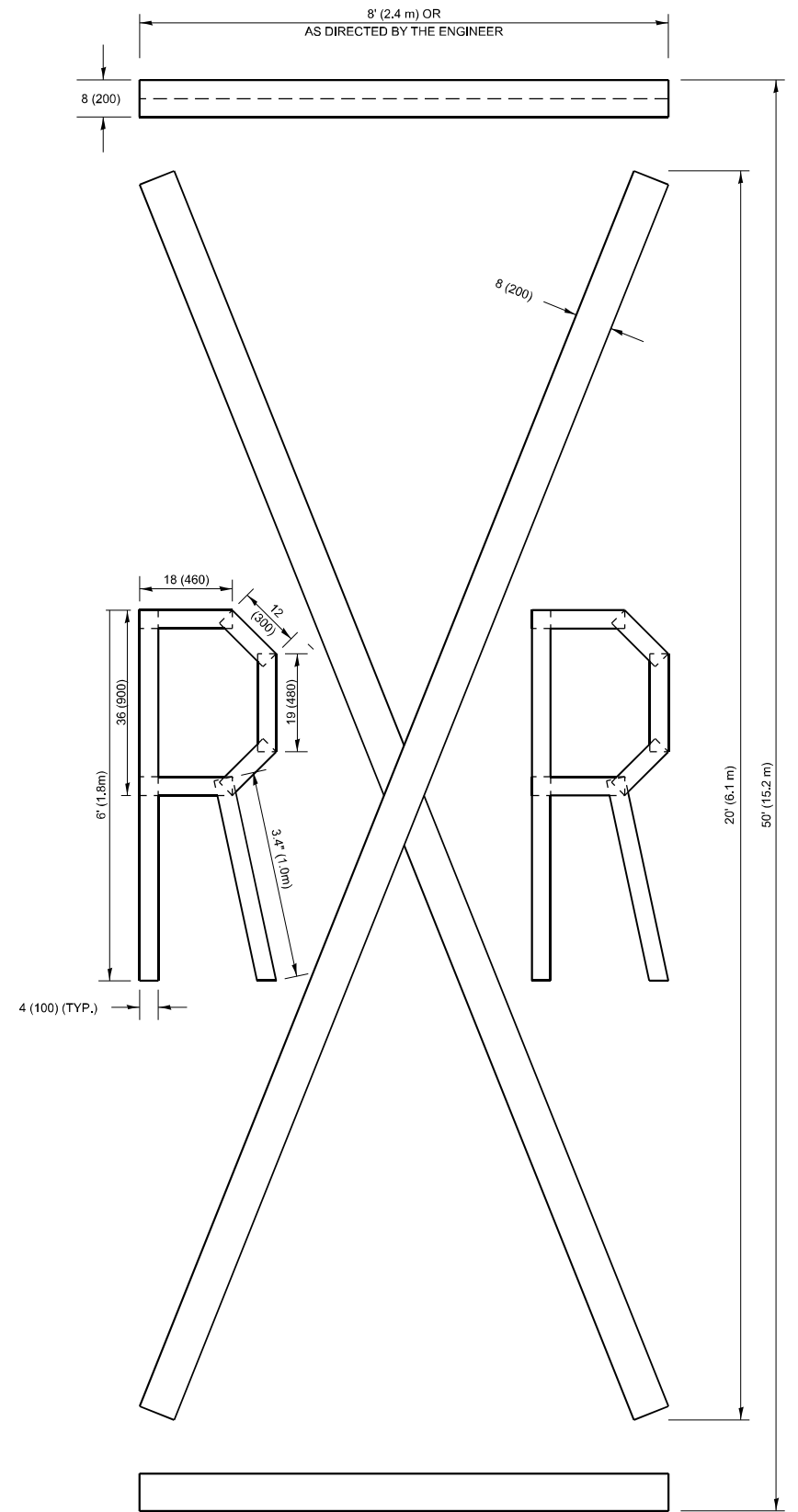


**QUANTITY**

4 (100) LINE = 64.1 ft. (19.5 m)  
21.4 sq. ft. (1.99 sq. m)

**NOTE:**

ALL QUANTITIES OF PLACEMENT ARE REPRESENTED IN LINEAR FEET OF 4" LINES TO MATCH THE 4" TEMPORARY TAPE PAY ITEM AND REPRESENTS THE TOTAL QUANTITY OF 4" TAPE REQUIRED.



**QUANTITY**

4 (100) LINE = 225.9 ft. (68.9 m)  
75.3 sq. ft. (6.99 sq. m)

All dimensions are in inches (millimeters) unless otherwise shown.

MODEL: TC-16 (Sheet)  
FILE NAME: c:\p\work\wv\toconnor.mullane@illinois.gov\d0987243-sh-Dis-Shts.dgn

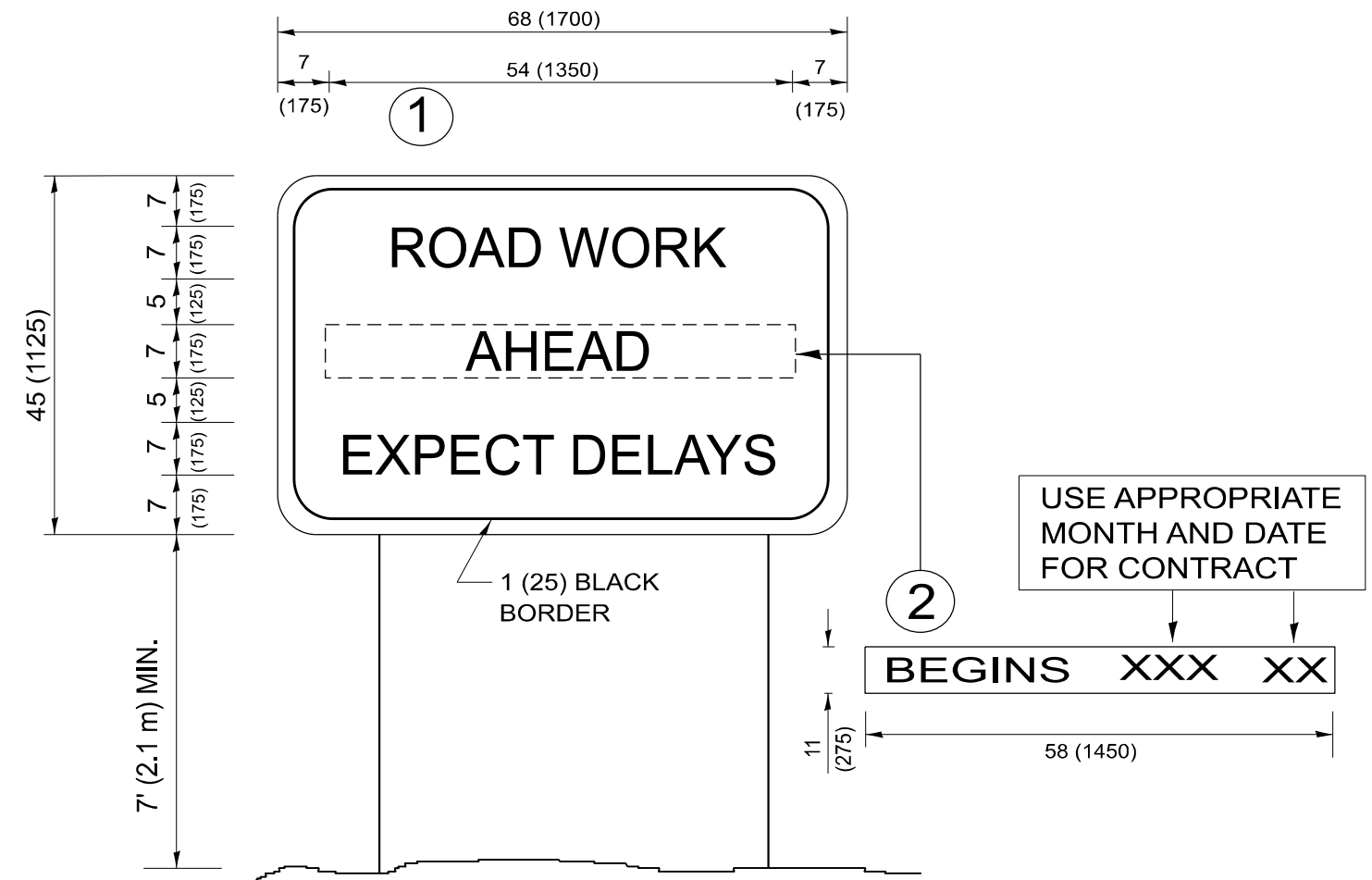
USER NAME = connor.mullane	DESIGNED -	REVISED - T. RAMMACHER 03-02-98
PLOT SCALE = 0.16666833 / in.	DRAWN -	REVISED - E. GOMEZ 08-28-00
PLOT DATE = 10/17/2024	CHECKED -	REVISED - E. GOMEZ 08-28-00
	DATE - 09-18-94	REVISED - A. SCHUETZE 09-15-16

**STATE OF ILLINOIS  
DEPARTMENT OF TRANSPORTATION**

**SHORT TERM PAVEMENT MARKING LETTERS AND SYMBOLS**

SCALE: NONE SHEET 1 OF 1 SHEETS STA. TO STA.

F.A.P. RTE.	SECTION	COUNTY	TOTAL SHEETS	SHEET NO.
303	FAP 0303 22 RS	MCHENRY	26	022
<b>TC-16</b>		CONTRACT NO. 62R95		
ILLINOIS FED. AID PROJECT				



**NOTES:**

1. USE BLACK LETTERING ON ORANGE BACKGROUND.
2. ERECT SIGNS IN ADVANCE OF THE LOCATION FOR THE "ROAD CONSTRUCTION AHEAD" SIGN AT LOCATIONS AS DIRECTED BY THE ENGINEER.
3. ERECT SIGN ① WITH INSTALLED PANEL ② ONE WEEK PRIOR TO THE START OF CONSTRUCTION.
4. REMOVE PANEL ② SOON AFTER THE START OF CONSTRUCTION.
5. SEE SPECIAL PROVISION FOR "TEMPORARY INFORMATION SIGNING" FOR ADDITIONAL INFORMATION.
6. ONE SIGN ASSEMBLY EQUALS 25.70 SQ. FT. (2.3 SQ. M.)
7. SHALL BE PAID FOR AS TEMPORARY INFORMATION SIGNING.

ALL DIMENSIONS ARE IN INCHES (MILLIMETERS)  
UNLESS OTHERWISE SHOWN.

MODEL: TC-22 (Sheet)  
FILE NAME: c:\p\work\wofu\connor.mullane@illinois.gov\d0987243-sh-Dis-Sigs.dgn

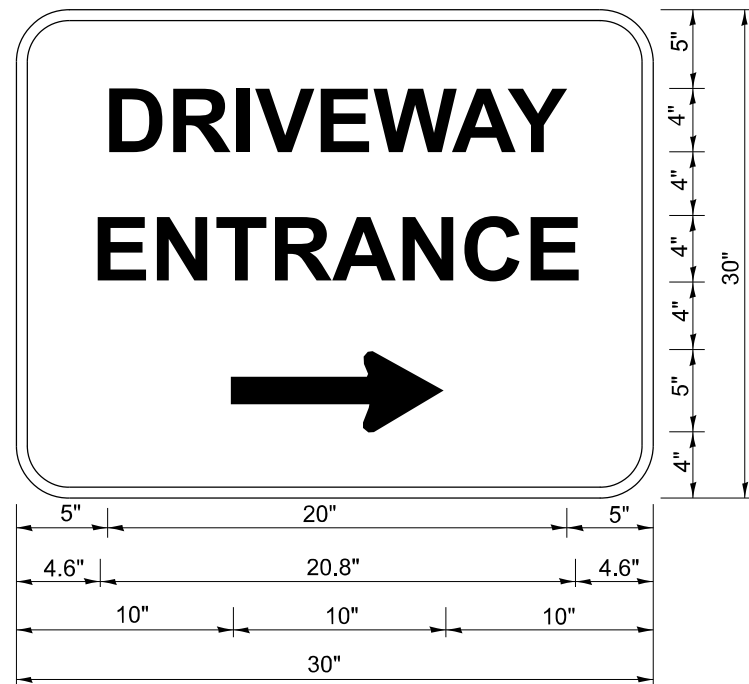
USER NAME = connor.mullane	DESIGNED -	REVISED - R. MIRS 09-15-97
PLOT SCALE = 0.16666833 1/ in.	DRAWN -	REVISED - R. MIRS 12-11-97
PLOT DATE = 10/17/2024	CHECKED -	REVISED - T. RAMMACHER 02-02-99
	DATE -	REVISED - C. JUCIUS 01-31-07

**STATE OF ILLINOIS  
DEPARTMENT OF TRANSPORTATION**

**ARTERIAL ROAD  
INFORMATION SIGN**

SCALE: NONE SHEET 1 OF 1 SHEETS STA. TO STA.

F.A.P. RTE.	SECTION	COUNTY	TOTAL SHEETS	SHEET NO.
303	FAP 0303 22 RS	MCHENRY	26	023
<b>TC-22</b>			CONTRACT NO. 62R95	
ILLINOIS FED. AID PROJECT				



3.0" RADIUS, 0.5" BORDER, WHITE ON GREEN; REFLECTORIZED  
 "DRIVEWAY" D; "ENTRANCE" D; STANDARD ARROW CUSTOM 12.0" x 5.0"

**NOTES:**

1. HALF OF THE SIGNS WILL REQUIRE A LEFT HAND FACING ARROW.
2. TWO SIGNS SHALL BE USED AT EACH COMMERCIAL ENTRANCE PLACED BACK-TO-BACK: ONE WITH A RIGHT HAND ARROW (SHOWN) SHALL BE PLACED ON THE NEAR RIGHT SIDE THE DRIVEWAY AND ONE WITH A LEFT HAND ARROW SHALL BE PLACED ON THE FAR LEFT SIDE OF THE DRIVEWAY.
3. SIGNS TO BE PAID FOR AS ITEM "TEMPORARY INFORMATION SIGNING".

MODEL: TC-26 (Sheet)  
 FILE NAME: c:\p\work\pww\connor.mullane@illinois.gov\d0987243-sh-Dis-Sigs.dgn

USER NAME = connor.mullane	DESIGNED -	REVISED - C. JUCIUS 02-15-07
PLOT SCALE = 0.16666833' / in.	DRAWN -	REVISED -
PLOT DATE = 10/17/2024	CHECKED -	REVISED -
	DATE -	REVISED -

STATE OF ILLINOIS  
 DEPARTMENT OF TRANSPORTATION

**DRIVEWAY ENTRANCE SIGNING**

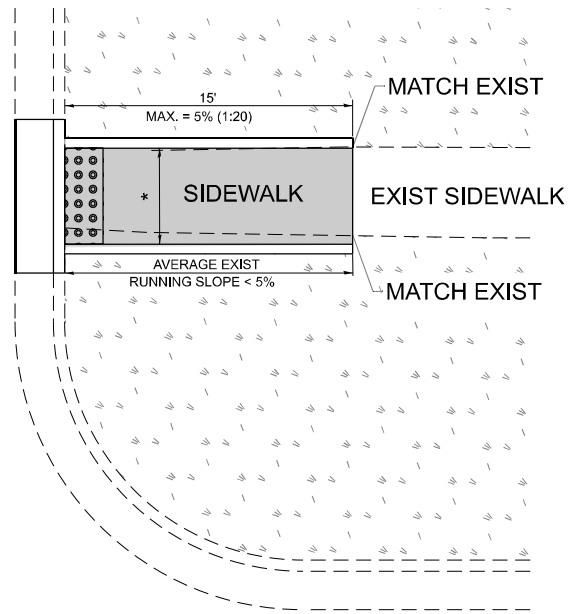
SCALE: NONE SHEET 1 OF 1 SHEETS STA. TO STA.

F.A.P. RTE.	SECTION	COUNTY	TOTAL SHEETS	SHEET NO.
303	FAP 0303 22 RS	MCHENRY	26	024
<b>TC-26</b>			CONTRACT NO. 62R95	
ILLINOIS FED. AID PROJECT				

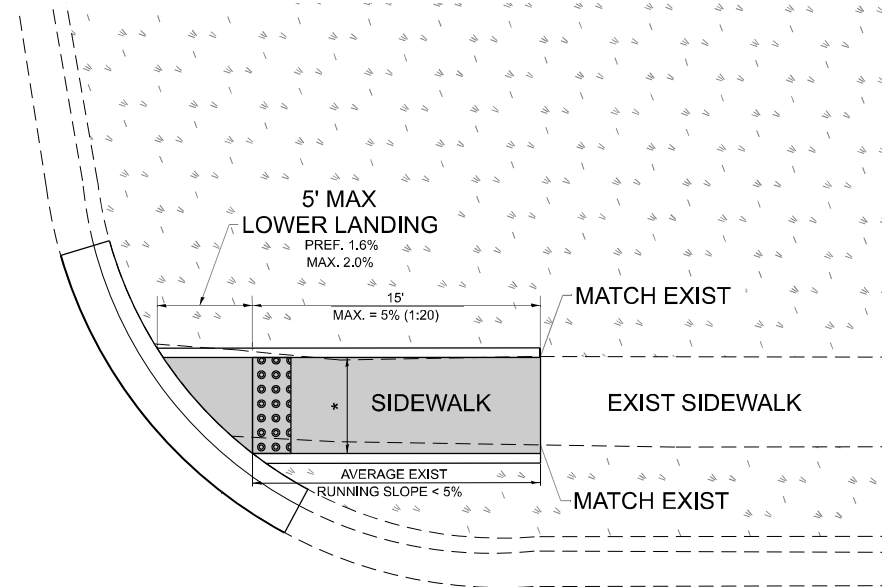


# ADA DETAIL FOR SINGLE PERPENDICULAR CURB RAMPS W/ EXIST. 5% OR LESS RUN. SLOPE

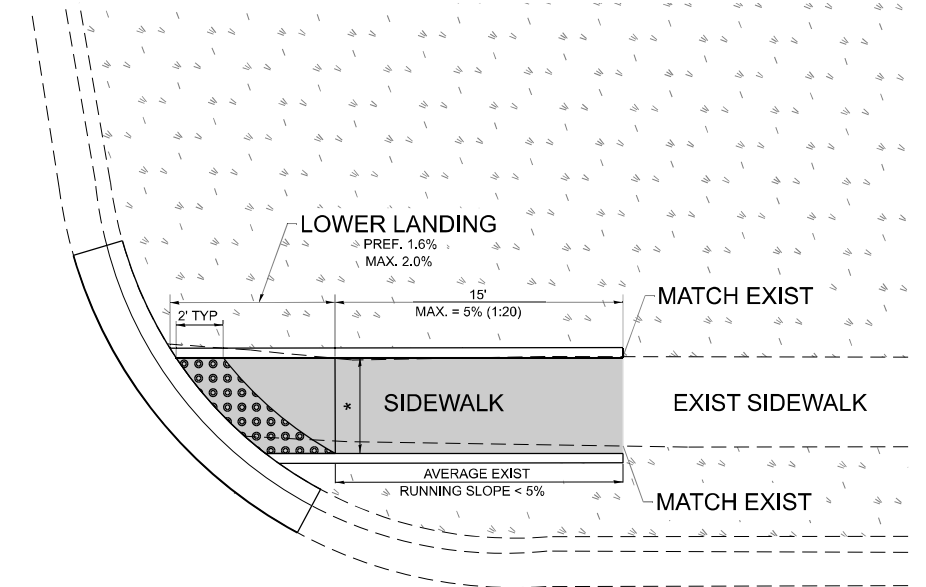
**PD-01A**



**PD-01B**



**PD-01C**



**LEGEND**

- EXIST. GRASS
- PROPOSED SIDEWALK
- DETECTABLE WARNINGS
- PROPOSED SIDE CURB

**CONSTRUCTION NOTES:**

- 1) ALL CROSS SLOPES ARE PREFERRED 1.6% (1:64), MAXIMUM 2% (1:50) EXCEPT WHEN TRANSITIONING TO EXISTING SIDEWALK
- \* MATCH EXISTING SIDEWALK WIDTH

MODEL: pd-01 (Sheet)  
FILE NAME: c:\p\work\1\work\connor.mullane@illinois.gov\0987243-sh-Dis-Sids.dgn

USER NAME = connor.mullane	DESIGNED -	REVISED -
DRAWN - R. LEDEZMA	CHECKED -	REVISED -
PLOT SCALE = 0.16666833' / in.	DATE - 10/02/2019	REVISED -
PLOT DATE = 10/17/2024		

**STATE OF ILLINOIS  
DEPARTMENT OF TRANSPORTATION**

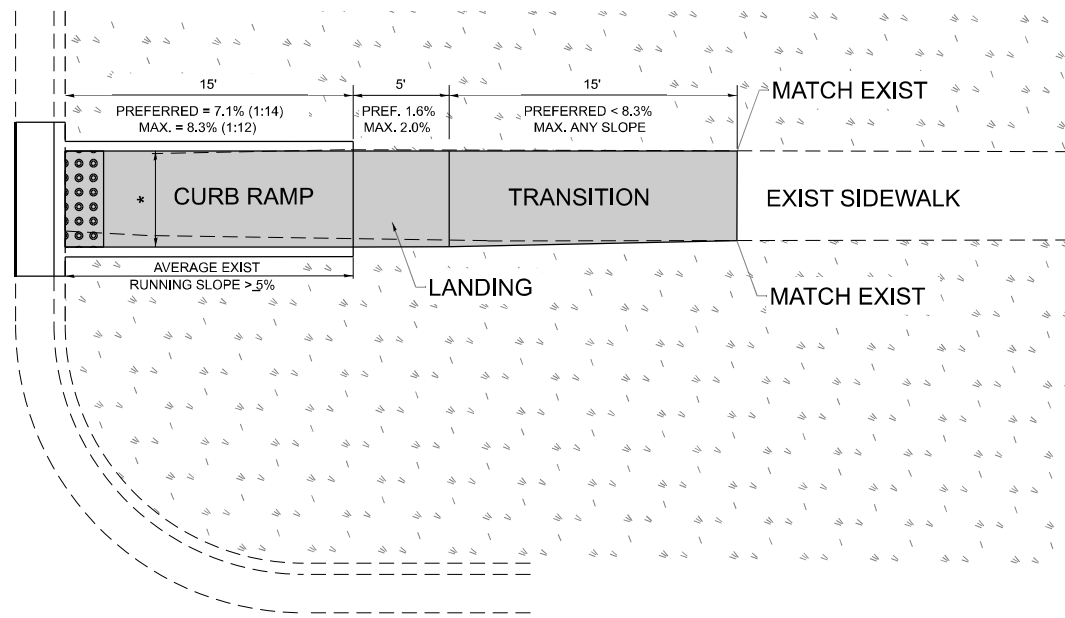
**PROJECT DETAIL FOR SINGLE PERPENDICULAR CURB RAMPS  
(PD-01)**

SCALE: NONE SHEET 1 OF 1 SHEETS STA. TO STA.

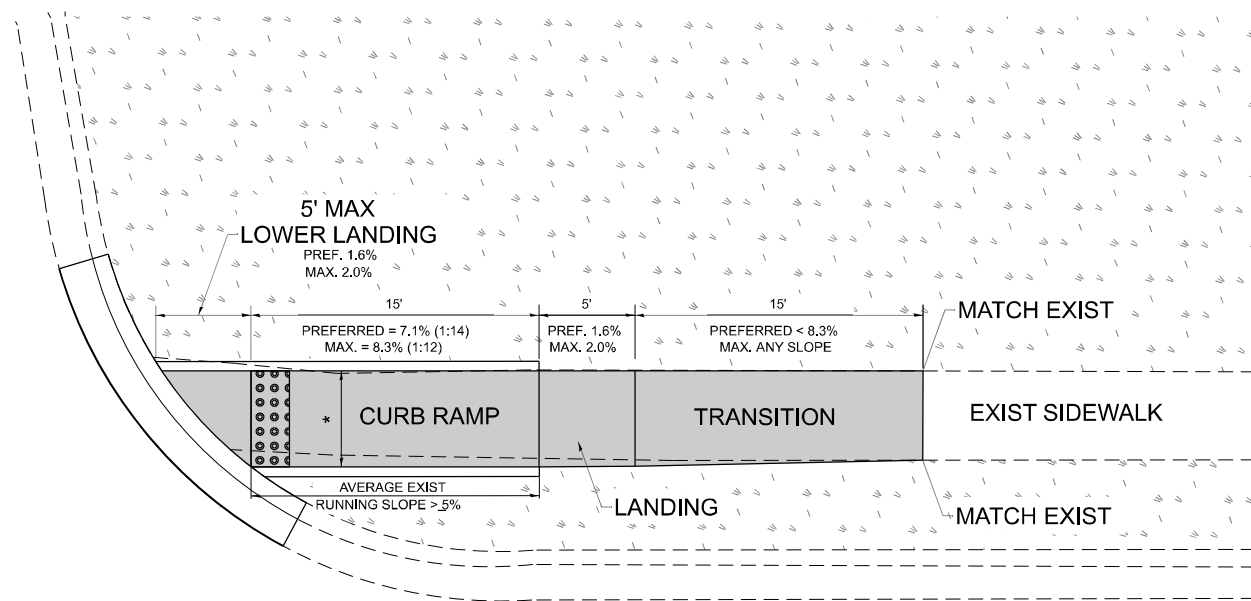
F.A.P. RTE.	SECTION	COUNTY	TOTAL SHEETS	SHEET NO.
303	FAP 0303 22 RS	MCHENRY	26	025
<b>PD-01</b>			CONTRACT NO. 62R95	
ILLINOIS FED. AID PROJECT				

# ADA DETAIL FOR SINGLE PERPENDICULAR CURB RAMPS W/ EXIST. 5% OR GREATER RUN. SLOPE

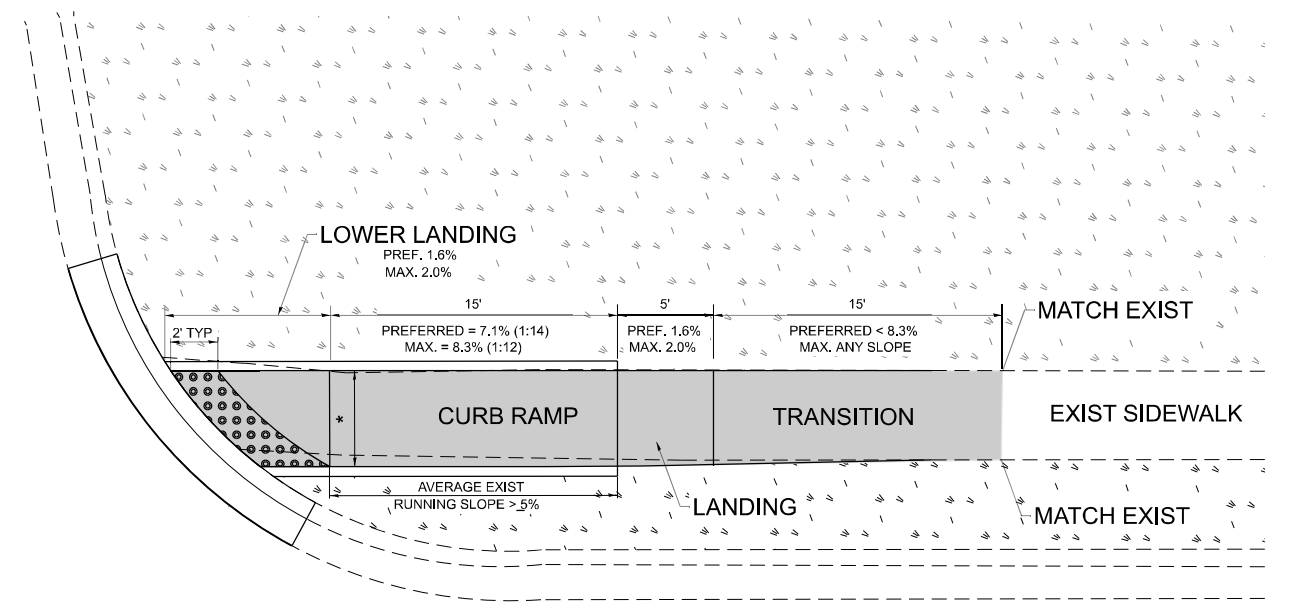
**PD-02A**



**PD-02B**



**PD-02C**



**LEGEND**

- EXIST. GRASS
- PROPOSED SIDE CURB
- PROPOSED SIDEWALK
- DETECTABLE WARNINGS

**CONSTRUCTION NOTES:**

- 1) ALL CROSS SLOPES ARE PREFERRED 1.6% (1:64), MAXIMUM 2% (1:50) EXCEPT WHEN TRANSITIONING TO EXISTING SIDEWALK
- \* MATCH EXISTING SIDEWALK WIDTH

MODEL: pd-02 (Sheet)  
FILE NAME: c:\p\work\work\connor.mullane@illinois.gov\0987243-sh-Dis-Sids.dgn

USER NAME = connor.mullane	DESIGNED -	REVISED -
PLOT SCALE = 0.16666833' / in.	DRAWN - R. LEDEZMA	REVISED -
PLOT DATE = 10/17/2024	CHECKED -	REVISED -
	DATE - 10/02/2019	REVISED -

**STATE OF ILLINOIS  
DEPARTMENT OF TRANSPORTATION**

**PROJECT DETAIL FOR SINGLE PERPENDICULAR CURB RAMPS  
(PD-02)**

SCALE: NONE SHEET 1 OF 1 SHEETS STA. TO STA.

F.A.P. RTE.	SECTION	COUNTY	TOTAL SHEETS	SHEET NO.
303	FAP 0303 22 RS	MCHENRY	26	26
<b>PD-02</b>			CONTRACT NO. 62R95	
ILLINOIS FED. AID PROJECT				