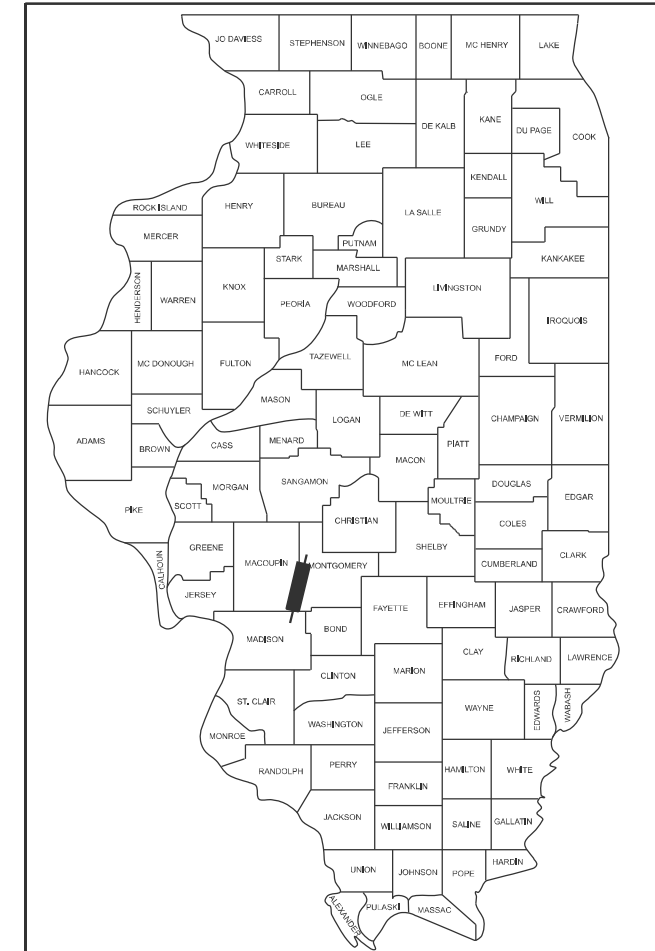


STATE OF ILLINOIS
DEPARTMENT OF TRANSPORTATION

F.A.I. RTE.	SECTION	COUNTY	TOTAL SHEETS	SHEET NO.
55	(59-1,2,68-1)RS-4	ILLINOIS	42	1
		CONTRACT NO. 72D00		

D-96-095-09



LOCATION OF SECTION INDICATED THUS: - ■ -

FUNCTIONAL CLASSIFICATION: INTERSTATE
ADT = 28,900 (2023)
MU = 7,401, SU = 775, PV = 20,724

STATE OF ILLINOIS
DEPARTMENT OF TRANSPORTATION

SUBMITTED October 17 2024

July P. M...
REGIONAL ENGINEER

December 6, 2024
Joe A. Elk
ENGINEER OF DESIGN AND ENVIRONMENT

December 6, 2024
James J. ...
DIRECTOR OF HIGHWAYS PROJECT IMPLEMENTATION 13

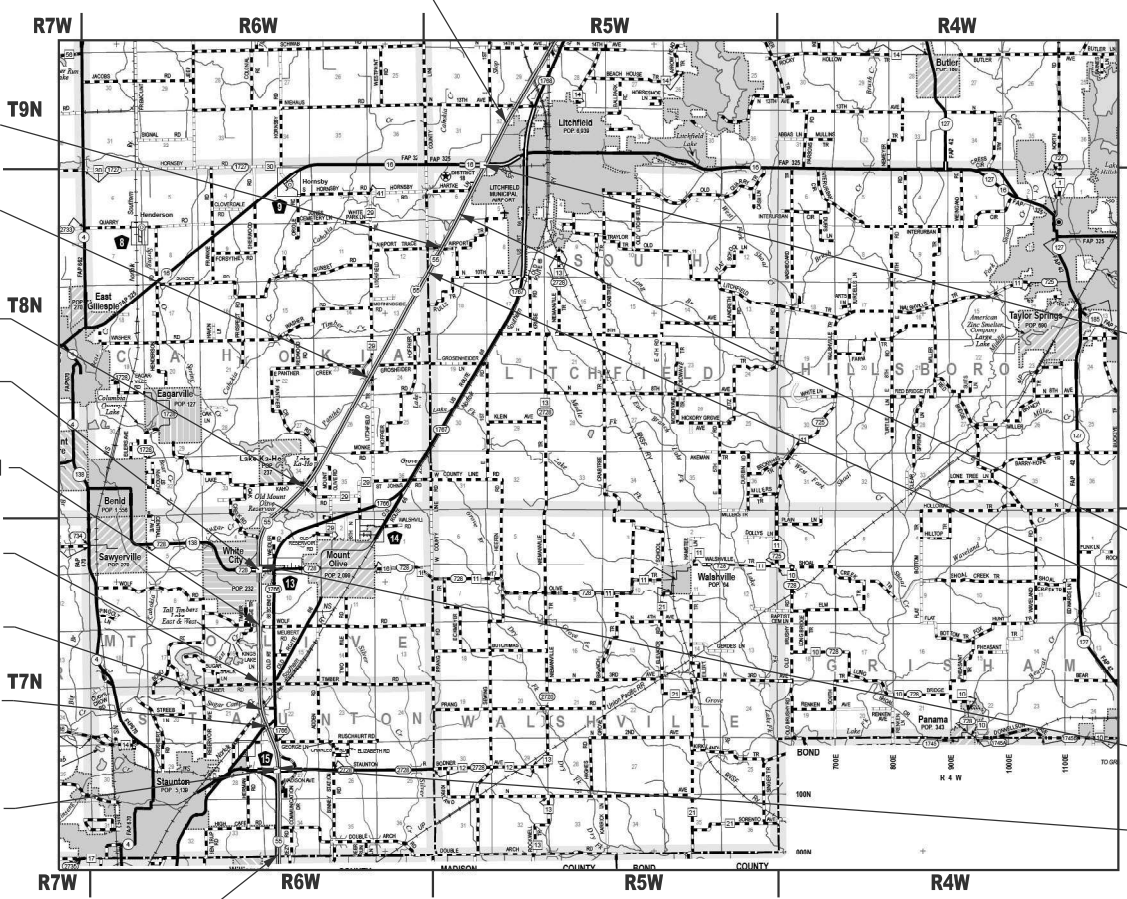
PRINTED BY THE AUTHORITY OF THE STATE OF ILLINOIS

PROPOSED HIGHWAY PLANS

**FAI ROUTE 55 (I-55)
SECTION (59-1,2,68-1)RS-4
PROJECT NHPP-VJDA(874)
RESURFACING, SMART OVERLAY, FOG SEAL
MACOUPIN & MONTGOMERY COUNTIES**

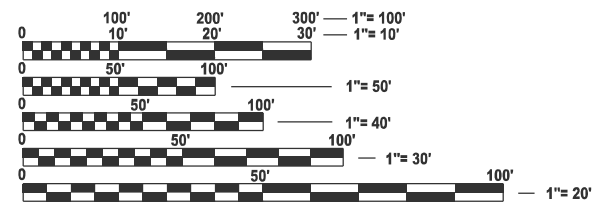
C-96-095-09

PROJECT BEGINS
STA 142+98.00



- SN 068-0052
STA 275+12.14 (R2)
- SN 059-0037
STA 414+00.67 (R2)
- SN 059-0038
STA 530+89.34 (R2)
- SN 059-0039
STA 624+78.26 (R3)
- SN 059-0040 & 0041
STA 676+81.06 (R3)
- SN 059-0042
STA 731+17.13 (R3)
- SN 059-0043
STA 755+97.40 (R3)
- SN 059-0044
STA 771+78.70 (R3)
- SN 059-0045
STA 164+88.99 (R4)

- SN 068-0051
STA 186+97.73
- STA 236+58.39 BK =
STA 236+61.67 AHD
- MONTGOMERY / MACOUPIN
COUNTY LINE
STA 300+47.61
- STA 603+06.82 BK =
STA 603+11.97 AHD
- STA 809+85.00 BK =
STA 161+10.28 AHD



FULL SIZE PLANS HAVE BEEN PREPARED USING STANDARD ENGINEERING SCALES. REDUCED SIZED PLANS WILL NOT CONFORM TO STANDARD SCALES. IN MAKING MEASUREMENTS ON REDUCED PLANS, THE ABOVE SCALES MAY BE USED.

J.U.L.I.E.
JOINT UTILITY LOCATION INFORMATION FOR EXCAVATION
1-800-892-0123
OR 811

PROJECT ENGINEER - JON KELLEY - (217) 785-2739
PROJECT MANAGER - CHRIS SIEFERT - (217) 524-7940

CONTRACT NO. 72D00

PROJECT ENDS
STA 246+00.00 (R4)

GROSS LENGTH = 75,168.29 FT. = 14.236 MILE
NET LENGTH = 75,051.80 FT. = 14.214 MILE

INDEX OF SHEETS

SHEET NO.	SHEET DESCRIPTION
1	COVER SHEET
2	GENERAL NOTES AND STANDARDS
3 - 6	SUMMARY OF QUANTITIES
7 - 9	TYPICAL SECTIONS
10 - 15	SCHEDULE OF QUANTITIES
16	ALIGNMENT TIES AND BENCHMARKS
17 - 35	PLAN SHEETS
36 - 42	DETAILS

GENERAL NOTES

1. THE CONTRACTOR SHALL NOTIFY THE DISTRICT 6 BUREAU OF OPERATIONS AT (217) 785-5306 THREE (3) WEEKS PRIOR TO IMPLEMENTING ANY TRAFFIC CONTROL.
2. THE DISTRICT 6 BUREAU OF OPERATIONS SHALL BE NOTIFIED BY PHONE (217) 785-5306 AT LEAST FOURTEEN (14) DAYS PRIOR TO PLACEMENT OF FINAL PAVEMENT MARKINGS.
3. PATCHING QUANTITIES HAVE BEEN ESTIMATED. THE RESIDENT ENGINEER SHALL LOCATE THE PATCHING LOCATIONS.

MIXTURE REQUIREMENTS

LOCATION:	FAI 55 MAINLINE & RAMPS
MIXTURE USE:	POLY HMA SURFACE
PG:	SBS PG 76-22
DESIGN AIR VOIDS:	4.0% @ N90
MIXTURE COMPOSITION:	IL 9.5
FRICITION AGGREGATE:	MIX E
QUALITY MANAGEMENT:	PFP
SUBLOT SIZE:	1000 TONS
MTD:	YES

HIGHWAY STANDARDS

NO.	DESCRIPTION
000001-08	STANDARD SYMBOLS, ABBREVIATIONS, AND PATTERNS
001006	DECIMAL OF AN INCH AND OF A FOOT
420701-03	PAVEMENT WELDED WIRE REINFORCEMENT
442001-04	CLASS A PATCHES
442101-09	CLASS B PATCHES
701101-05	OFF-RD OPERATIONS, MULTILANE, 15' TO 24" FROM PAVEMENT EDGE
701106-02	OFF-RD OPERATIONS, MULTILANE, MORE THAN 15' AWAY
701201-05	LANE CLOSURE, 2L 2W, DAY ONLY, FOR SPEEDS ≥ 45 MPH
701206-05	LANE CLOSURE, 2L 2W, NIGHT ONLY, FOR SPEEDS ≥ 45 MPH
701400-12	APPROACH TO LANE CLOSURE, FREEWAY/EXPRESSWAY
701401-13	LANE CLOSURE, FREEWAY/EXPRESSWAY
701411-09	LANE CLOSURE, MULTILANE, AT ENTRANCE OR EXIT RAMP, FOR SPEEDS ≥ 45 MPH
701422-10	LANE CLOSURE, MULTILANE, FOR SPEEDS ≥ 45 MPH TO 55 MPH
701426-09	LANE CLOSURE, MULTILANE, INTERMITTENT OR MOVING OPER., FOR SPEEDS ≥ 45 MPH
701428-01	TRAFFIC CONTROL SETUP AND REMOVAL FREEWAY/EXPRESSWAY
701451-05	RAMP CLOSURE FREEWAY/EXPRESSWAY
701456-05	PARTIAL EXITRAMP CLOSURE, FREEWAY/EXPRESSWAY
701901-10	TRAFFIC CONTROL DEVICES
780001-05	TYPICAL PAVEMENT MARKINGS
781001-04	TYPICAL APPLICATION OF RAISED REFLECTIVE PAVEMENT MARKERS
001001-02	AREAS OF REINFORCEMENT BARS
420001-10	PAVEMENT JOINTS

COMMITMENTS

1. NONE

APPLICATION RATES

THE FOLLOWING RATES OF APPLICATION WERE UTILIZED TO CALCULATE QUANTITIES

BITUMINOUS MATERIALS (TACK COAT)	0.05 POUNDS / SQ FT (DRIVING LANES)
BITUMINOUS MATERIALS (TACK COAT)	0.025 POUNDS / SQ FT (DRIVING LANES) BETWEEN LIFTS
BITUMINOUS MATERIALS TYPE (FOG SEAL)	0.08 POUNDS / SQ FT (SHOULDERS)
HOT-MIX ASPHALT COURSES	112 POUNDS / SQ YD - INCH THICKNESS

**STATE OF ILLINOIS
DEPARTMENT OF TRANSPORTATION
DIVISION OF HIGHWAYS
DISTRICT 6**

EXAMINED October 16, 20 24


ENGINEER OF OPERATIONS

EXAMINED October 15, 20 24


ENGINEER OF PROJECT IMPLEMENTATION

EXAMINED October 15, 20 24


ENGINEER OF PROGRAM DEVELOPMENT

REV - MS

MODEL: Gen Notes-1 [Sheet]
FILE NAME: c:\pwworking\autodesk\calcs\9462810672D00-aht-GenNotes.dgn

USER NAME = Christopher.Siefert	DESIGNED -	REVISED -	STATE OF ILLINOIS DEPARTMENT OF TRANSPORTATION	GENERAL NOTES AND STANDARDS	F.A.I. RTE	SECTION	COUNTY	TOTAL SHEETS	SHEET NO.	
	DRAWN -	REVISED -			55	(59-1,2,68-1)RS-4	*	42	2	
	CHECKED -	REVISED -			CONTRACT NO. 72D00					
PLOT DATE = 10/15/2024	DATE -	REVISED -			SCALE:	SHEET	OF	SHEETS	STA.	TO STA.
					ILLINOIS FED. AID PROJECT *MACOUPIN & MONTGOMERY					

CODE NO.	ITEM	UNIT	TOTAL QUANTITY	6-01555-0000	6-01555-0000	6-01594-0000
				NHPP FUNDING 90% FEDERAL 10% STATE MONTGOMERY COUNTY	NHPP FUNDING 90% FEDERAL 10% STATE MACOUPIN COUNTY	NHPP FUNDING 90% FEDERAL 10% STATE MACOUPIN COUNTY
				ROADWAY 0005	ROADWAY 0005	ROADWAY 0005
				INTERSTATE	INTERSTATE	INTERSTATE
40600290	BITUMINOUS MATERIALS (TACK COAT)	POUND	222,952	54,251	30,888	137,813
* 40600372	LONGITUDINAL JOINT SEALANT, HALF-WIDTH	FOOT	322,385	73,396	47,522	201,467
40600405	MATERIAL TRANSFER DEVICE	TON	41,662	10,127	5,766	25,769
40604174	POLYMERIZED HOT-MIX ASPHALT SURFACE COURSE, IL-9.5, MIX "E", N90	TON	41,681	10,146	5,766	25,769
44000155	HOT-MIX ASPHALT SURFACE REMOVAL, 1 1/2"	SQ YD	495,450	120,557	68,642	306,251
44200050	WELDED WIRE REINFORCEMENT	SQ YD	230	230	0	0
44200610	CLASS A PATCHES, TYPE II, 13 INCH	SQ YD	80	20	0	60
44200612	CLASS A PATCHES, TYPE III, 13 INCH	SQ YD	80	20	0	60
44200614	CLASS A PATCHES, TYPE IV, 13 INCH	SQ YD	96	23	0	73
44200994	CLASS B PATCHES, TYPE II, 12 INCH	SQ YD	84	0	0	84
44201019	CLASS B PATCHES, TYPE II, 14 INCH	SQ YD	43	43	0	0
44201025	CLASS B PATCHES, TYPE IV, 14 INCH	SQ YD	230	230	0	0
44201294	CLASS B PATCH - EXPANSION JOINT	FOOT	608	224	0	384
44201299	DOWEL BARS 1 1/2"	EACH	285	105	0	180

* - INDICATES PAY ITEM REQUIRES A SPECIAL PROVISION

REV - MS

MODEL: SQO-1 [Sheet]
FILE NAME: c:\p\work\p\work\infocad\460280672D00-ait-SQO.dgn

USER NAME = Christopher.Siefert	DESIGNED -	REVISED -
	DRAWN -	REVISED -
	CHECKED -	REVISED -
PLOT DATE = 10/16/2024	DATE -	REVISED -

**STATE OF ILLINOIS
DEPARTMENT OF TRANSPORTATION**

SUMMARY OF QUANTITIES

SCALE: SHEET 1 OF 4 SHEETS STA. TO STA.

F.A.I. RTE.	SECTION	COUNTY	TOTAL SHEETS	SHEET NO.
55	(59-1,2,68-1)RS-4	*	42	3
ILLINOIS FED. AID PROJECT			CONTRACT NO. 72D00	
* MONTGOMERY & MACOUPIN				

CODE NO.	ITEM	UNIT	TOTAL QUANTITY	6-01555-0000	6-01555-0000	6-01594-0000
				NHPP FUNDING 90% FEDERAL 10% STATE MONTGOMERY COUNTY	NHPP FUNDING 90% FEDERAL 10% STATE MACOUPIN COUNTY	NHPP FUNDING 90% FEDERAL 10% STATE MACOUPIN COUNTY
				ROADWAY 0005	ROADWAY 0005	ROADWAY 0005
				INTERSTATE	INTERSTATE	INTERSTATE
44213000	PATCHING REINFORCEMENT	SQ YD	256	63	0	193
44213200	SAW CUTS	FOOT	1,648	502	0	1,146
44213204	TIE BARS 3/4"	EACH	285	105	0	180
67000400	ENGINEER'S FIELD OFFICE, TYPE A	CAL MO	12	3	3	6
67100100	MOBILIZATION	L SUM	1	0.2	0.2	0.6
70100320	TRAFFIC CONTROL AND PROTECTION, STANDARD 701422	L SUM	1	1.0		
70100420	TRAFFIC CONTROL AND PROTECTION, STANDARD 701411	EACH	14	6	0	8
70100450	TRAFFIC CONTROL AND PROTECTION, STANDARD 701201	L SUM	1	0.3		0.7
70100455	TRAFFIC CONTROL AND PROTECTION, STANDARD 701206	L SUM	1	0.3		0.7
70100800	TRAFFIC CONTROL AND PROTECTION, STANDARD 701401	L SUM	1	0.2	0.2	0.6
70100820	TRAFFIC CONTROL AND PROTECTION, STANDARD 701451	L SUM	1	0.2	0.2	0.6
70100825	TRAFFIC CONTROL AND PROTECTION, STANDARD 701456	L SUM	1	0.2	0.2	0.6
70107025	CHANGEABLE MESSAGE SIGN	CAL DA	84	28	28	28
70200100	NIGHTTIME WORK ZONE LIGHTING	L SUM	1	0.2	0.2	0.6

* - INDICATES PAY ITEM REQUIRES A SPECIAL PROVISION

REV - MS

MODEL: SQ02 [Sheet]
FILE NAME: c:\p\work\project\infocad\09460280672D00-ait-SQ02.dgn

USER NAME = Christopher.Siefert	DESIGNED -	REVISED -
	DRAWN -	REVISED -
	CHECKED -	REVISED -
PLOT DATE = 10/16/2024	DATE -	REVISED -

**STATE OF ILLINOIS
DEPARTMENT OF TRANSPORTATION**

SUMMARY OF QUANTITIES

SCALE: SHEET 2 OF 4 SHEETS STA. TO STA.

F.A.I. RTE.	SECTION	COUNTY	TOTAL SHEETS	SHEET NO.
55	(59-1,2,68-1)RS-4	*	42	4
CONTRACT NO. 72D00			ILLINOIS FED. AID PROJECT	
* MONTGOMERY & MACOUPIN				

CODE NO.	ITEM	UNIT	TOTAL QUANTITY	6-01555-0000	6-01555-0000	6-01594-0000	
				NHPP FUNDING 90% FEDERAL 10% STATE MONTGOMERY COUNTY	NHPP FUNDING 90% FEDERAL 10% STATE MACOUPIN COUNTY	NHPP FUNDING 90% FEDERAL 10% STATE MACOUPIN COUNTY	
				ROADWAY 0005 INTERSTATE	ROADWAY 0005 INTERSTATE	ROADWAY 0005 INTERSTATE	
*	X2503000	MAINTENANCE MOWING	ACRE	121	30	17	74
*	X4060107	BITUMINOUS MATERIALS (FOG SEAL)	POUND	203,726	51,051	27,075	125,600
*	X6010100	CLEANING UNDERDRAIN OUTLETS	EACH	826	149	100	577
*	X6670201	OUTLET MARKER	EACH	826	149	100	577
*	X7810400	TEMPORARY RAISED PAVEMENT MARKER	EACH	4,414	1,104.0	598.0	2,712.0
*	Z0013798	CONSTRUCTION LAYOUT	L SUM	1	0.2	0.2	0.6
*	Z0048665	RAILROAD PROTECTIVE LIABILITY INSURANCE	L SUM	1			1.0
∅	Z0076600	TRAINEES	HOUR	5000	5000		
∅	Z0076604	TRAINEES TRAINING PROGRAM GRADUATE	HOUR	5000	5000		

* - INDICATES PAY ITEM REQUIRES A SPECIAL PROVISION

∅ 0042

REV - MS

MODEL: SQ04 (Sheet)
FILE NAME: c:\p\work\pwr\10156\erfca\094628\0672\000-shit-SQ04.dgn

USER NAME = Christopher.Siefert	DESIGNED -	REVISED -
	DRAWN -	REVISED -
	CHECKED -	REVISED -
PLOT DATE = 10/16/2024	DATE -	REVISED -

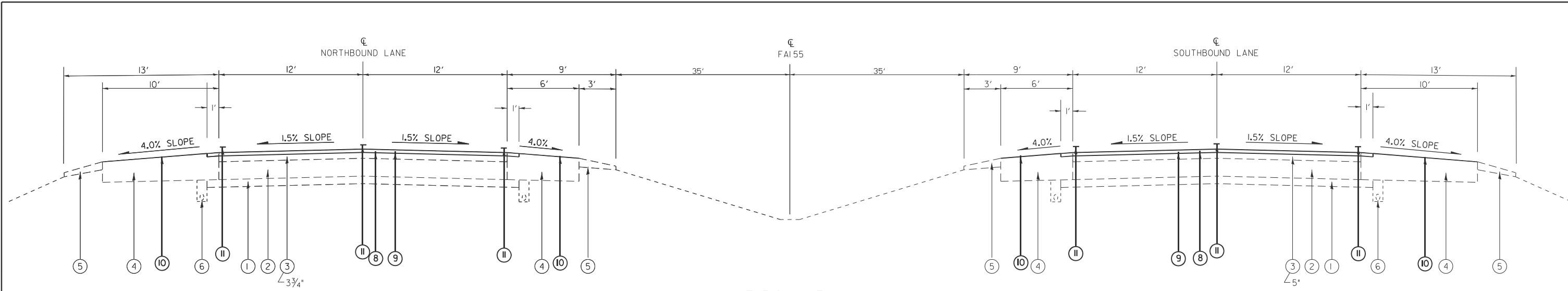
**STATE OF ILLINOIS
DEPARTMENT OF TRANSPORTATION**

SUMMARY OF QUANTITIES

SCALE: SHEET 4 OF 4 SHEETS STA. TO STA.

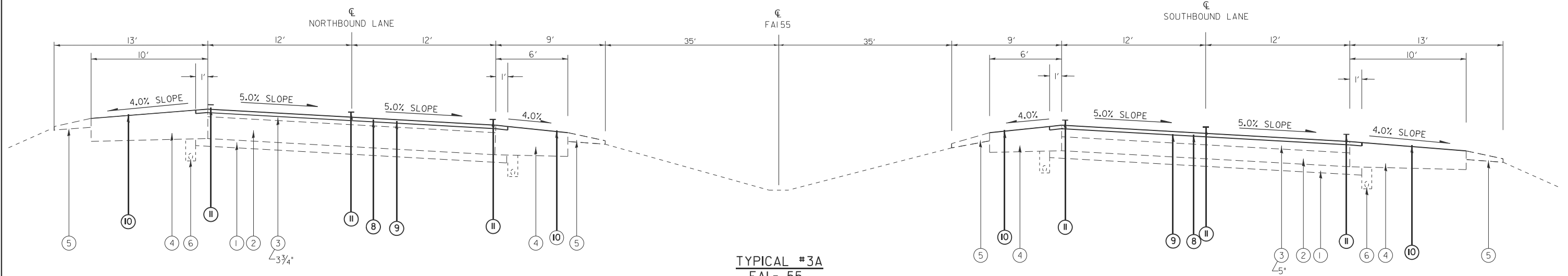
F.A.I. RTE.	SECTION	COUNTY	TOTAL SHEETS	SHEET NO.
55	(59-1.2,68-1)RS-4	*	42	6
CONTRACT NO. 72D00				

ILLINOIS FED. AID PROJECT
* MONTGOMERY & MACOUPIN



TYPICAL #3
FAI - 55

STA 500+00.00 TO STA 502+41.49
 STA 551+96.59 TO STA 570+70.64
 STA EQ 603+06.82 BK = 603+11.97AH
 STA 603+11.97 TO STA 744+53.00
 STA 766+34.18 TO STA 788+59.81
 STA EQ 809+85.00 BK = 161+10.28 AH
 STA 161+10.28 TO STA 246+00.00



TYPICAL #3A
FAI - 55

STA 502+41.49 TO STA 551+96.59
 STA 788+59.81 TO STA 809+85.00
 STA EQ 809+85.00 BK = 161+10.28 AH

EXISTING LEGEND

- ① EX STABILIZED SUB-BASE 4"
- ② EX CRC PAVEMENT 9"
- ③ EX HMA SURFACE (THICKNESS VARIES)
- ④ EX HMA SHOULDERS (THICKNESS VARIES)
- ⑤ EX AGGREGATE SHOULDER
- ⑥ EX PIPE UNDERDRAINS 4"
- ⑦ EX PCC PAVEMENT 8" (IL 138 & FAU 8136), 10" (IL 16)

PROPOSED LEGEND

- ⑧ PR HOT-MIX ASPHALT SURFACE REMOVAL, 1 1/2"
- ⑨ PR POLYMERIZED HOT-MIX ASPHALT SURFACE COURSE, 1 1/2"
- ⑩ PR BITUMINOUS MATERIALS (FOG SEAL)
- ⑪ PR MODIFIED URETHANE PAVEMENT MARKING, LINE 6"

MODEL: typical_sht_2 (Sheet)
 FILE NAME: c:\p\work\pwr\l\st\fer\cal\094628\1672\000-sht-Typical3A.dgn

USER NAME = Christopher.Siefert	DESIGNED -	REVISED -
	DRAWN -	REVISED -
	CHECKED -	REVISED -
PLOT DATE = 10/16/2024	DATE -	REVISED -

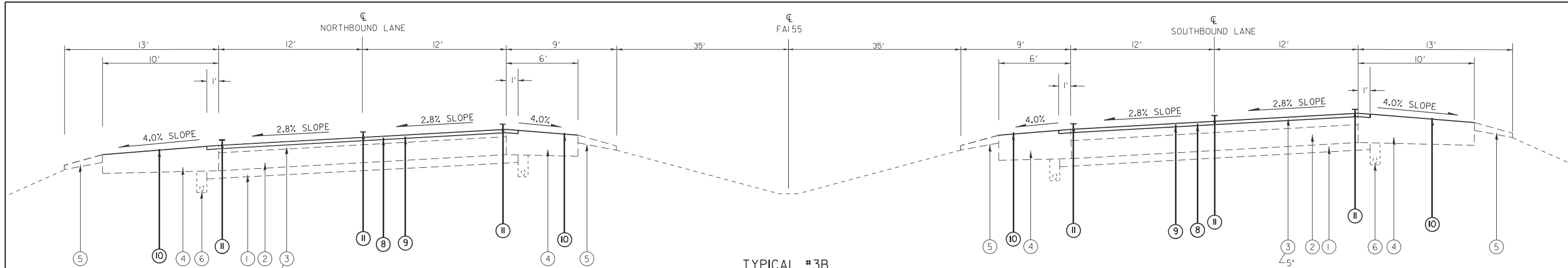
STATE OF ILLINOIS
DEPARTMENT OF TRANSPORTATION

TYPICAL SECTIONS

SCALE: SHEET 2 OF 3 SHEETS STA. TO STA.

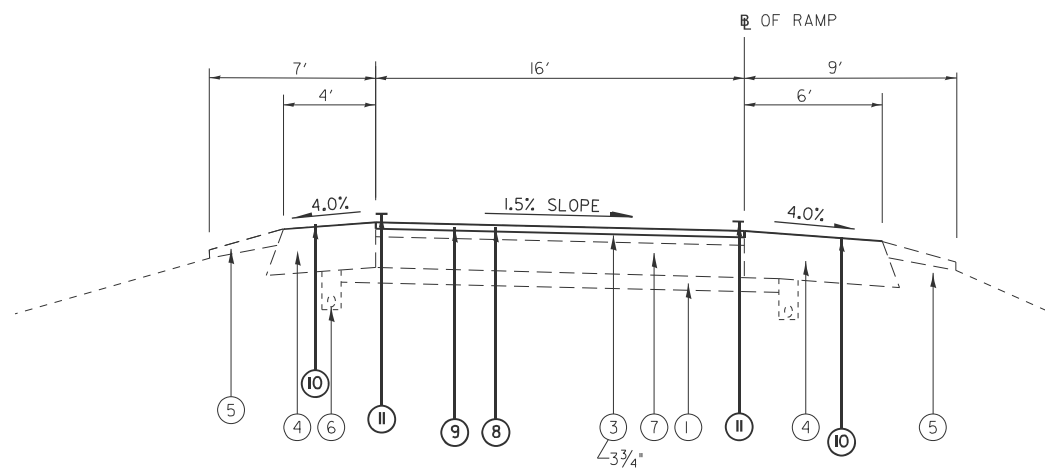
F.A.I. RTE.	SECTION	COUNTY	TOTAL SHEETS	SHEET NO.
55	(59-1.2,68-1)RS-4	*	42	8
CONTRACT NO. 72D00				
ILLINOIS FED. AID PROJECT				

* MONTGOMERY & MACOUPIN



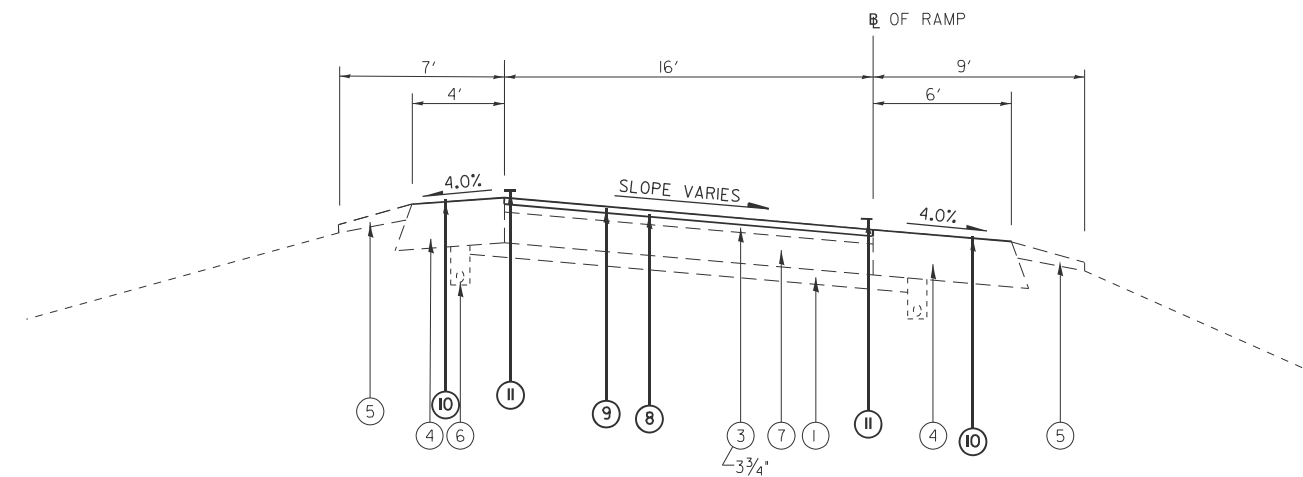
TYPICAL #3B
FAI - 55

STA 570+70.64 TO STA 603+06.82
 STA EQ 603+06.82 BK = STA 603+11.97 AH
 STA 744+53.00 TO STA 766+34.18



TYPICAL #4
RAMP (TANGENT)

EXIT 52 - IL 16 INTERCHANGE
 EXIT 44 - IL 138 INTERCHANGE
 EXIT 41 - FAU 8136 (STAUNTON ROAD) INTERCHANGE



TYPICAL #5
RAMP (SUPERELEVATED)

EXIT 52 - IL 16 INTERCHANGE
 EXIT 44 - IL 138 INTERCHANGE
 EXIT 41 - FAU 8136 (STAUNTON ROAD) INTERCHANGE

EXISTING LEGEND

- ① EX STABILIZED SUB-BASE 4"
- ② EX CRC PAVEMENT 9"
- ③ EX HMA SURFACE (THICKNESS VARIES)
- ④ EX HMA SHOULDERS (THICKNESS VARIES)
- ⑤ EX AGGREGATE SHOULDER
- ⑥ EX PIPE UNDERDRAINS 4"
- ⑦ EX PCC PAVEMENT 8" (IL 138 & FAU 8136), 10" (IL 16)

PROPOSED LEGEND

- Ⓑ PR HOT-MIX ASPHALT SURFACE REMOVAL, 1 1/2"
- Ⓒ PR POLYMERIZED HOT-MIX ASPHALT SURFACE COURSE, 1 1/2"
- Ⓓ PR BITUMINOUS MATERIALS (FOG SEAL)
- Ⓔ PR MODIFIED URETHANE PAVEMENT MARKING, LINE 6"

MODEL: typical_sht_3 (Sheet)
 FILE NAME: c:\p\work\pav\is\fercal\094628\0672\000-sht-Typical3B.dgn

USER NAME = Christopher.Siefert	DESIGNED -	REVISED -
	DRAWN -	REVISED -
	CHECKED -	REVISED -
PLOT DATE = 10/16/2024	DATE -	REVISED -

STATE OF ILLINOIS
DEPARTMENT OF TRANSPORTATION

TYPICAL SECTIONS

SCALE: SHEET 3 OF 3 SHEETS STA. TO STA.

F.A.I. RTE.	SECTION	COUNTY	TOTAL SHEETS	SHEET NO.
55	(59-1.2,69-1)RS-4	*	42	9
CONTRACT NO. 72D00				

ILLINOIS FED. AID PROJECT
 * MONTGOMERY & MACOUPIN

REMOVAL SCHEDULE

STA.			STA.	LENGTH (FOOT)	44000155
					HMA SURF REM, 1 1/2" (SQ YD)
SB I-55 - MONTGOMERY COUNTY					
142+98.00		to	200+00.00	5,702	16,472
200+00.00		to	236+58.39BK=236+61.67AH	3,658	10,569
236+61.67		to	260+00.00	2,338	6,755
260+00.00		to	300+47.61	4,048	11,693
MONTGOMERY / MACOUPIN COUNTY LINE					
SB I-55 - MACOUPIN COUNTY					
300+47.61		to	320+00.00	1,952	5,640
320+00.00		to	380+00.00	6,000	17,333
380+00.00		to	419+28.00	3,928	11,348
419+28.00		to	440+00.00	2,072	5,986
440+00.00		to	500+00.00	6,000	17,333
500+00.00		to	560+00.00	6,000	17,333
560+00.00		to	603+06.82BK=603+11.97AH	4,307	12,442
603+11.97		to	620+00.00	1,688	4,877
620+00.00		to	676+02.96	5,603	16,186
676+02.96	BRIDGE OMISSION	to	677+35.21	132	
677+35.21		to	680+00.00	265	765
680+00.00		to	740+00.00	6,000	17,333
740+00.00		to	800+00.00	6,000	17,333
800+00.00		to	809+85.00BK=161+10.28AH	985	2,846
161+10.28		to	211+00.00	4,990	14,415
211+00.00		to	246+00.00	3,500	10,111
NB I-55 - MONTGOMERY COUNTY					
142+98.00		to	200+00.00	5,702	16,472
200+00.00		to	236+58.39BK=236+61.67AH	3,658	10,569
236+61.67		to	260+00.00	2,338	6,755
260+00.00		to	300+47.61	4,048	11,693
MONTGOMERY / MACOUPIN COUNTY LINE					
NB I-55 - MACOUPIN COUNTY					
300+47.61		to	320+00.00	1,952	5,640
320+00.00		to	380+00.00	6,000	17,333
380+00.00		to	419+28.00	3,928	11,348
419+28.00		to	440+00.00	2,072	5,986
440+00.00		to	500+00.00	6,000	17,333
500+00.00		to	560+00.00	6,000	17,333
560+00.00		to	603+06.82BK=603+11.97AH	4,307	12,442
603+11.97		to	620+00.00	1,688	4,877
620+00.00		to	676+34.79	5,635	16,278
676+34.79	BRIDGE OMISSION	to	677+51.28	116	
677+51.28		to	680+00.00	249	719
680+00.00		to	740+00.00	6,000	17,333
740+00.00		to	800+00.00	6,000	17,333
800+00.00		to	809+85.00BK=161+10.28AH	985	2,846
161+10.28		to	211+00.00	4,990	14,415
211+00.00		to	246+00.00	3,500	10,111
IL-16 - MONTGOMERY COUNTY					
LOOP 1					
505+30.05		to	529+92.64	2,463	4,378
529+92.64		to	530+95.00	102	171
530+95.00		to	540+44.00	949	1,002
LOOP 2					
605+29.66		to	629+96.83	2,467	4,386
629+96.83		to	630+96.16	99	166
630+96.16		to	640+45.70	950	1,002

REMOVAL SCHEDULE

STA.			STA.	LENGTH (FOOT)	44000155
					HMA SURF REM, 1 1/2" (SQ YD)
RAMP 1					
100+00.00		to	105+30.00	530	824
105+30.00		to	125+20.71	1,991	3,539
125+20.71		to	128+52.73	332	590
128+52.73		to	IL 16		1,038
RAMP 2					
207+09.22		to	219+04.71	1,195	2,125
219+04.71		to	220+05.77	101	168
220+05.77		to	229+55.62	950	1,003
RAMP 3					
300+00.00		to	305+29.89	530	824
305+29.89		to	329+52.77	2,423	4,307
329+52.77		to	330+70.15	117	439
RAMP 4					
405+30.06		to	419+07.16	1,377	2,448
419+07.16		to	420+06.16	99	165
420+06.16		to	429+56.09	950	1,003
IL-138 - MACOUPIN COUNTY					
RAMP 1					
100+00.00		to	105+30.10	530	825
105+30.10		to	119+79.19	1,449	2,576
119+79.19		to	IL 138		640
RAMP 2					
IL 138		to	201+33.61		483
201+33.61		to	213+26.23	1,192.62	2,120
213+26.23		to	215+23.47	197.24	329
215+23.47		to	224+83.37	959.9	1,013
RAMP 3					
300+00.00		to	305+27.78	527.78	821
305+27.78		to	318+08.87	1,281	2,277
318+08.87		to	IL 138		596
RAMP 4					
IL 138		to	402+12.89		695
402+12.89		to	412+68.06	1,055	1,876
412+68.06		to	413+68.20	100	167
413+68.20		to	423+18.57	950	1,003
STAUNTON RD - MACOUPIN COUNTY					
RAMP A					
00+00.00		to	05+02.84	503	782
05+02.84		to	20+05.00	1,502	2,671
20+05.00		to	STAUNTON RD		602
RAMP B					
STAUNTON RD		to	01+28.76		453
01+28.76		to	16+45.51	1,517	2,696
16+45.51		to	17+63.01	118	196
17+63.01		to	26+93.23	930	982
RAMP C					
00+00.00		to	05+31.72	532	827
05+31.72		to	21+62.32	1,631	2,899
21+62.32		to	STAUNTON RD		512
RAMP D					
STAUNTON RD		to	01+24.63		433
01+24.63		to	16+03.13	1,479	2,628
16+03.13		to	16+99.80	97	161
16+99.80		to	26+65.95	966	1,020
TOTAL MONTGOMERY COUNTY					120,557
TOTAL MACOUPIN COUNTY					374,893
PROJECT TOTAL					495,450

MODEL: Schedule-1 [Sheet]
 FILE NAME: c:\p\work\1015\fercal\0946028\0672D00-shb-Schedule.dgn

USER NAME = Christopher.Siefert	DESIGNED -	REVISED -
	DRAWN -	REVISED -
	CHECKED -	REVISED -
PLOT DATE = 10/16/2024	DATE -	REVISED -

**STATE OF ILLINOIS
DEPARTMENT OF TRANSPORTATION**

SCHEDULE OF QUANTITIES

SCALE: SHEET 1 OF 6 SHEETS STA. TO STA.

F.A.I. RTE.	SECTION	COUNTY	TOTAL SHEETS	SHEET NO.
55	(59-1.2,68-1)RS-4	*	42	10
CONTRACT NO. 72D00				
ILLINOIS FED. AID PROJECT				

* MONTGOMERY & MACOUPIN

PAVING SCHEDULE

STA.		STA.	LENGTH (FOOT)	AREA (SQ YD)	40600290 BIT MATLS, (TACK COAT) (POUND)	X4060107 BIT MATLS, (FOG SEAL) (POUNDS)	40600372 LONGITUDINAL JOINT SEALANT, HALF-WIDTH (FOOT)	40604174 POLYMERIZED HMA SURFACE COURSE, (TON)	40600405 MATERIAL TRANSFER DEVICE, (TON)
SB I-55 - MONTGOMERY COUNTY									
142+98.00	to	144+63.05	165	477	215	185	330	40	40
144+63.05	to	148+86.76	424	1,224	551	610	847	103	103
149+17.00	EMERGENCY CROSSOVER			265		191			
148+86.76	to	200+00.00	5,113	14,772	6,647	5,727	10,226	1,241	1,241
200+00.00	to	236+58.39BK=236+61.67AH	3,658	10,569	4,756	4,097	7,317	888	888
236+61.67	to	244+80.25	819	2,365	1,064	917	1,637	199	199
244+80.25	to	249+09.24	429	1,239	558	618	858	104	104
249+09.24	EMERGENCY CROSSOVER			273		197			
249+09.24	to	260+00.00	1,091	3,151	1,418	1,222	2,182	265	265
260+00.00	to	300+47.61	4,048	11,693	5,262	4,533	8,095	982	982
MONTGOMERY / MACOUPIN COUNTY LINE									
SB I-55 - MACOUPIN COUNTY									
300+47.61	to	301+48.06	100	290	131	113	201	24	24
301+48.06	to	305+77.06	429	1,239	558	618	858	104	104
306+07.00	EMERGENCY CROSSOVER			261		188			
305+77.06	to	320+00.00	1,423	4,111	1,850	1,594	2,846	345	345
320+00.00	to	380+00.00	6,000	17,333	7,800	6,720	12,000	1,456	1,456
380+00.00	to	419+28.00	3,928	11,348	5,106	4,399	7,856	953	953
419+28.00	to	440+00.00	2,072	5,986	2,694	2,321	4,144	503	503
440+00.00	to	440+18.21	18	53	24	20	36	4	4
440+18.21	to	444+47.20	429	1,239	558	618	858	104	104
444+47.20	EMERGENCY CROSSOVER			261		188			
444+47.20	to	500+00.00	5,553	16,041	7,219	6,219	11,106	1,347	1,347
500+00.00	to	560+00.00	6,000	17,333	7,800	6,720	12,000	1,456	1,456
560+00.00	to	575+07.68	1,508	4,356	1,960	1,689	3,015	366	366
575+07.68	to	579+36.57	429	1,239	558	618	858	104	104
579+36.57	EMERGENCY CROSSOVER			262		188			
579+36.57	to	603+06.82BK=603+11.97AH	2,370	6,847	3,081	2,655	4,741	575	575
603+11.97	to	620+00.00	1,688	4,877	2,194	1,891	3,376	410	410
620+00.00	to	655+85.22	3,585	10,357	4,661	4,015	7,170	870	870
655+85.22	to	660+14.21	429	1,239	558	618	858	104	104
660+14.21	EMERGENCY CROSSOVER			262		188			
660+14.21	to	676+02.96	1,589	4,590	2,065	1,779	3,178	386	386
676+02.96	BRIDGE OMISSION			132					
677+35.21	to	680+00.00	265	765	344	297	530	64	64
680+00.00	to	701+16.92	2,117	6,116	2,752	2,371	4,234	514	514
701+16.92	to	705+45.94	429	1,239	558	618	858	104	104
705+45.94	EMERGENCY CROSSOVER			262		188			
705+45.94	to	740+00.00	3,454	9,978	4,490	3,869	6,908	838	838
740+00.00	to	800+00.00	6,000	17,333	7,800	6,720	12,000	1,456	1,456
800+00.00	to	809+85.00BK=161+10.28AH	985	2,846	1,281	1,103	1,970	239	239
161+10.28	to	211+00.00	4,990	14,415	6,487	5,588	9,979	1,211	1,211
211+00.00	to	240+58.93	2,959	8,548	3,847	3,314	5,918	718	718
240+58.93	to	244+87.92	429	1,239	558	618	858	104	104
245+18.00	EMERGENCY CROSSOVER			262		188			
244+87.92	to	246+00.00	112	324	146	126	224	27	27
NB I-55 - MONTGOMERY COUNTY									
142+98.00	to	149+47.25	649	1,876	844	727	1,299	158	158
149+47.25	to	153+66.00	419	1,210	544	603	838	102	102
153+66.00	to	200+00.00	4,634	13,387	6,024	5,190	9,268	1,125	1,125
200+00.00	to	236+58.39BK=236+61.67AH	3,658	10,569	4,756	4,097	7,317	888	888
236+61.67	to	249+70.72	1,309	3,782	1,702	1,466	2,618	318	318
249+70.72	to	253+99.71	429	1,239	558	618	858	104	104
253+99.71	to	260+00.00	600	1,734	780	672	1,201	146	146
260+00.00	to	300+47.61	4,048	11,693	5,262	4,533	8,095	982	982
MONTGOMERY / MACOUPIN COUNTY LINE									
NB I-55 - MACOUPIN COUNTY									
300+47.61	to	306+37.05	589	1,703	766	660	1,179	143	143
306+37.05	to	310+66.04	429	1,239	558	618	858	104	104
310+66.04	to	320+00.00	934	2,698	1,214	1,046	1,868	227	227
320+00.00	to	380+00.00	6,000	17,333	7,800	6,720	12,000	1,456	1,456
380+00.00	to	419+28.00	3,928	11,348	5,106	4,399	7,856	953	953
419+28.00	to	440+00.00	2,072	5,986	2,694	2,321	4,144	503	503
440+00.00	to	445+07.19	507	1,465	659	568	1,014	123	123
445+07.19	to	449+36.18	429	1,239	558	618	858	104	104
449+36.18	to	500+00.00	5,064	14,629	6,583	5,671	10,128	1,229	1,229
500+00.00	to	560+00.00	6,000	17,333	7,800	6,720	12,000	1,456	1,456
560+00.00	to	579+96.49	1,996	5,768	2,595	2,236	3,993	484	484
579+96.49	to	584+25.49	429	1,239	558	618	858	104	104
584+25.49	to	603+06.82BK=603+11.97AH	1,881	5,435	2,446	2,107	3,763	457	457
603+11.97	to	620+00.00	1,688	4,877	2,194	1,891	3,376	410	410
620+00.00	to	660+74.23	4,074	11,770	5,296	4,563	8,148	989	989
660+74.23	to	665+03.23	429	1,239	558	618	858	104	104
665+03.23	to	676+34.79	1,132	3,269	1,471	1,267	2,263	275	275
676+34.79	BRIDGE OMISSION			116					
677+51.28	to	680+00.00	249	719	323	279	497	60	60
680+00.00	to	706+05.99	2,606	7,528	3,388	2,919	5,212	632	632
706+05.99	to	710+35.01	429	1,239	558	618	858	104	104
710+35.01	to	740+00.00	2,965	8,566	3,854	3,321	5,930	720	720
740+00.00	to	800+00.00	6,000	17,333	7,800	6,720	12,000	1,456	1,456
800+00.00	to	809+85.00BK=161+10.28AH	985	2,846	1,281	1,103	1,970	239	239
161+10.28	to	211+00.00	4,990	14,415	6,487	5,588	9,979	1,211	1,211
211+00.00	to	245+47.92	3,448	9,961	4,482	3,862	6,896	837	837
245+47.92	to	246+00.00	52	150	68	75	104	13	13

PAVING SCHEDULE

STA.		STA.	LENGTH (FOOT)	AREA (SQ YD)	40600290 BIT MATLS, (TACK COAT) (POUND)	X4060107 BIT MATLS, (FOG SEAL) (POUNDS)	40600372 LONGITUDINAL JOINT SEALANT, HALF-WIDTH (FOOT)	40604174 POLYMERIZED HMA SURFACE COURSE, (TON)	40600405 MATERIAL TRANSFER DEVICE, (TON)
IL-16 - MONTGOMERY COUNTY									
LOOP 1									
505+30.05	to	529+92.64	2,463	4,378	1,970	1,970		368	368
529+92.64	to	530+95.00	102	171	77	82		14	14
530+95.00	to	540+44.00	949	1,002	451	759	1,898	84	84
LOOP 2									
605+29.66	to	629+96.83	2,467	4,386	1,974	1,974		368	368
629+96.83	to	630+96.16	99	166	74	79		14	14
630+96.16	to	640+45.70	950	1,002	451	760	1,899	84	84
RAMP 1									
100+00.00	to	105+30.00	530	824	371	424	1,649	69	69
105+30.00	to	125+20.71	1,991	3,539	1,593	1,593		297	297
125+20.71	to	128+52.73	332	590	266	266		50	50
128+52.73	to	IL 116		1,038	467	747		87	87
RAMP 2									
207+09.21	to	219+04.71	1,196	2,125	956	956		179	179
219+04.71	to	220+05.77	101	168	76	81		14	14
220+05.77	to	229+55.62	950	1,003	451	760	1,900	84	84
RAMP 3									
300+00.00	to	305+29.89	530	824	371	424	1,060	69	69
305+29.89	to	329+52.77	2,423	4,307	1,938	1,938		362	362
329+52.77	to	330+70.15	117	439	197	94		37	37
RAMP 4									
405+30.06	to	419+07.16	1,377	2,448	1,102	1,102		206	206
419+07.16	to	420+06.16	99	165	74	79		14	14
420+06.16	to	429+56.09	950	1,003	451	760	2,005	84	84
IL-138 - MACOUPIN COUNTY									
RAMP 1									
100+00.00	to	105+30.10	530	825	371	424	1,060	69	69
105+30.10	to	119+79.19	1,449	2,576	1,159	1,159		216	216
119+79.19	to	IL 138		640	288	461		54	54
RAMP 2									
IL 138	to	201+33.61		483	217	348		41	41
201+33.61	to	213+26.23	1,192.62	2,120	954	954		178	178
213+26.23	to	215+23.47	197.24	329	148	158		28	28

PAVEMENT MARKING SCHEDULE

STA.		STA.	LENGTH (FOOT)	78009006 MOD URETHANE PVT MRK - LINE 6" (FOOT)				78011035 GRV FOR REC PVT MRK - LINE 7" (FOOT)	78009008 MOD URTH PVT MRK - LINE 8" (FOOT)	78011045 GRV FOR REC PVT MRK - LINE 9" (FOOT)	78009012 MOD URTH PVT MRK - LINE 12" (FOOT)	78011065 GRV FOR REC PVT MRK - LINE 13" (FOOT)	78009024 MOD URTH PVT MRK - LINE 24" (FOOT)	78011125 GRV FOR REC PVT MRK - LINE 25" (FOOT)	78009000 MOD URTH PVT MRK - LET & SYM (SQFT)	78011000 GRV FOR REC PVT MRK - LET & SYM (SQFT)
				WHITE	YELLOW	SKIP DASH	DOTTED									
IL-16 - MONTGOMERY COUNTY																
LOOP 1																
505+30.05	to	528+74.15	2,344	2,344	2,344		4,688									
528+74.15	to	532+93.80	420		420		420	420	420							
532+93.80	to	540+44.00	750	750		188	938									
LOOP 2																
605+29.66	to	606+62.40	133	133	133		265									
606+62.40	to	628+95.75	2,233	2,233			4,467									
628+95.75	to	632+96.56	401		401		401	401	401							
632+96.56	to	640+45.70	749	749		187	936									
RAMP 1																
100+00.00	to	103+02.64	303	303		76	378									
103+02.64	to	106+62.39	360	360			360	360								
106+62.39	to	114+97.27	835	835	835		1,670									
114+97.27	to	129+00.05	1,403	1,403	1,403		2,806									
129+00.05	to	130+68.58	169		169		169	169	69	69						
1003+80.39	to	1005+89.11	209	209			209	209	47	47						
130+31.74 LT												16	16			
128+33.31 LT														15.6	15.6	
129+00.11 LT														15.6	15.6	
130+17.90 LT														15.6	15.6	
1003+13.75 LT														15.6	15.6	
1003+79.64 LT														15.6	15.6	
1004+80.77 LT														15.6	15.6	
1004+99.67 LT												20	20			
RAMP 2																
207+09.22	to	217+97.44	1,088	1,088	1,088		2,176									
217+97.44	to	222+05.84	408	408			408	408	408							
222+05.84	to	229+55.62	750	750		187	937									
RAMP 3																
300+00.00	to	303+02.59	303	303		76	378									
303+02.59	to	306+08.75	306	306			306	306								
306+08.75	to	314+97.32	889	889	889		1,777									
314+97.32	to	330+70.16	1,573	1,573	1,573		3,146									
330+30.52 RT	to	330+70.16 RT	40					130	130	58	58					
330+35.71 LT															15.6	15.6
330+32.11 RT															15.6	15.6
330+57.35 LT												16	16			
330+51.23 RT												18	18			
327+96.48														24.3	24.3	
329+21.48														24.3	24.3	
RAMP 4																
405+30.06	to	417+87.22	1,257	1,257	1,257		2,514									
417+87.22	to	422+06.37	419	419			419	419	419							
422+06.37	to	429+56.09	750	750		187	937									
IL-138 - MACOUPIN COUNTY																
RAMP 1																
100+00.00	to	103+02.71	303	303		76	378									
103+02.71	to	105+86.73	284	284			284	284	284							
105+86.73	to	112+29.34	643	643	643		1,285									
112+29.34	to	119+79.19	750	750	750		1,500									
119+79.19	to	121+10.44	131	131	131		263	200	200	111	111					
120+76.17 LT															15.6	15.6
120+73.40 RT															15.6	15.6
120+87.78 LT												18	18			
120+77.50 RT												18	18			
118+36.00														24.3	24.3	
119+61.00														24.3	24.3	
RAMP 2																
200+22.82	to	213+26.23	1,303	1,303	1,303		2,607									
213+26.23	to	217+04.79	379	379			379	379	379							
217+04.79	to	224+83.37	779	779		195	973									
RAMP 3																
300+00.00	to	303+02.62	303	303		76	378									
303+02.62	to	306+35.91	333	333			333	333	333							
306+35.91	to	312+00.83	565	565	565		1,130									
312+00.83	to	318+68.77	668	668	668		1,336									
318+68.77	to	319+25.09	56	56	56		113	217	217	134	134					
318+79.12 LT															15.6	15.6
318+85.16 RT															15.6	15.6
318+86.19 LT												18	18			
318+97.64 RT												18	18			
316+50.69														24.3	24.3	
317+76.33														24.3	24.3	
RAMP 4																
400+23.41	to	411+60.10	1,137	1,137	1,137		2,273									
411+60.10	to	415+68.37	408	408			408	408	408							
415+68.37	to	423+18.57	750	750		188	938									

MODEL: Schedules-4 [Sheet]
FILE NAME: c:\p\work\1015\1015\1015\1015\Schedules.dgn

USER NAME = Christopher.Siefert	DESIGNED -	REVISED -
	DRAWN -	REVISED -
	CHECKED -	REVISED -
PLOT DATE = 10/16/2024	DATE -	REVISED -

**STATE OF ILLINOIS
DEPARTMENT OF TRANSPORTATION**

SCHEDULE OF QUANTITIES

SCALE: SHEET 4 OF 6 SHEETS STA. TO STA.

F.A.I. RTE.	SECTION	COUNTY	TOTAL SHEETS	SHEET NO.
55	(59-1,2,68-1)RS-4	*	42	13
CONTRACT NO. 72D00				
ILLINOIS FED. AID PROJECT				

* MONTGOMERY & MACOUPIN

PAVEMENT MARKING SCHEDULE

STA.		STA.	LENGTH (FOOT)	78009006 MOD URETHANE PVT MRK - LINE 6" (FOOT)				78011035	78009008	78011045	78009012	78011065	78009024	78011125	78009000	78011000	
				WHITE	YELLOW	SKIP DASH	DOTTED	GRV FOR REC PVT	MOD URTH PVT	GRV FOR REC PVT	MOD URTH PVT	GRV FOR REC PVT	MOD URTH PVT	GRV FOR REC PVT	MOD URTH PVT	MRK - LET & SYM	GRV FOR REC PVT
								MRK - LINE 7" (FOOT)	MRK - LINE 8" (FOOT)	MRK - LINE 9" (FOOT)	MRK - LINE 12" (FOOT)	MRK - LINE 13" (FOOT)	MRK - LINE 24" (FOOT)	MRK - LINE 25" (FOOT)	MRK - LET & SYM (SQFT)	MRK - LET & SYM (SQFT)	
STAUNTON RD - MACOUPIN COUNTY																	
RAMP A																	
00+00.00	to	02+51.00	251	251			63	314									
02+51.00	to	06+62.39	411	411				411		411							
06+62.39	to	14+21.29	759	759	759			1,518									
14+21.29	to	21+10.22	689	689	689			1,378									
21+10.22	to	21+58.43	48	48	48			96	183	183	100	100					
21+17.50	LT													15.6	15.6		
21+26.76	RT													15.6	15.6		
21+25.94	LT											18	18				
21+38.92	RT											18	18				
19+55.26														24.3	24.3		
20+52.67														24.3	24.3		
RAMP B																	
00+22.72	to	15+39.47	1,517	1,517	1,517			3,034									
15+39.47	to	19+65.92	426	426				426	426	426							
19+65.92	to	26+93.23	727	727			182	909									
RAMP C																	
00+00.00	to	03+03.83	304	304			76	380									
03+03.83	to	06+33.59	330	330				330	330								
06+33.59	to	13+44.42	711	711	711			1,422									
13+44.42	to	22+19.54	875	875	875			1,750									
22+19.54	to	22+60.56	41	41	41			82	185	185	108	108					
22+23.37	RT													15.6	15.6		
22+28.20	LT													15.6	15.6		
22+30.96	RT											18	18				
22+38.42	LT											18	18				
20+27.24														24.3	24.3		
21+47.01														24.3	24.3		
RAMP D																	
00+24.54	to	15+15.46	1,491	1,491	1,491			2,982									
15+15.46	to	19+04.13	389	389				389	389	389							
19+04.13	to	26+65.95	762	762			190	952									
TOTAL MONTGOMERY COUNTY				42,626	44,236	7,873	901	95,637	5,143	5,143	482	482	70	70	174	174	
TOTAL MACOUPIN COUNTY				130,222	130,228	29,711	1,045	291,205	6,716	6,716	1,124	1,124	144	144	319	319	
PROJECT TOTAL				386,842	386,842			386,842	11,859	11,859	1,606	1,606	214	214	493	493	

RAISED REFLECTIVE PAVEMENT MARKERS

STA.		STA.	LENGTH (FOOT)	78100100 RAISED REFLECTIVE PAVEMENT MARKER (EACH)		78300200 RAISED REFLECTIVE PAVEMENT MARKER REMOVAL (EACH)
				CRYSTAL	AMBER	
SB I-55 - MONTGOMERY COUNTY						
142+98.00	to	171+51.23	2,853	73		73
168+45.55	RT	171+51.23	306	10		10
171+51.23	to	200+00.00	2,849	73		73
200+00.00	to	236+58.39BK=236+61.67AH	3,658	93		93
236+61.67	to	260+00.00	2,338	60		60
260+00.00	to	300+47.61	4,048	103		103
MONTGOMERY / MACOUPIN COUNTY LINE						
SB I-55 - MACOUPIN COUNTY						
300+47.61	to	320+00.00	1,952	51		51
320+00.00	to	380+00.00	6,000	152		152
380+00.00	to	419+28.00	3,928	100		100
419+28.00	to	440+00.00	2,072	54		54
440+00.00	to	500+00.00	6,000	152		152
500+00.00	to	560+00.00	6,000	152		152
560+00.00	to	603+06.82BK=603+11.97AH	4,307	110		110
603+11.97	to	611+23.45	811	22		22
608+39.66	RT	611+23.45	284	9		9
611+23.45	to	620+00.00	87	24		24
620+00.00	to	680+00.00	6,000	152		152
680+00.00	to	740+00.00	6,000	152		152
740+00.00	to	800+00.00	6,000	152		152
796+25.84	RT	800+00.00	374	11		11
800+00.00	to	800+42.92	43	3		3
800+42.92	to	809+85.00BK=161+10.28AH	942	26		26
161+10.28	to	211+00.00	4,990	127		127
211+00.00	to	246+00.00	3,500	90		90
NB I-55 - MONTGOMERY COUNTY						
142+98.00	to	200+00.00	5,702	145		145
200+00.00	to	201+92.00	192	7		7
201+92.00	to	205+52.00	360	11		11
201+92.00	LT	205+52.00	360	11		11
205+52.00	to	236+58.39BK=236+61.67AH	3,106	80		80
236+61.67	to	260+00.00	2,338	60		60
260+00.00	to	300+47.61	4,048	103		103
MONTGOMERY / MACOUPIN COUNTY LINE						
NB I-55 - MACOUPIN COUNTY						
300+47.61	to	320+00.00	1,952	51		51
320+00.00	to	380+00.00	6,000	152		152
380+00.00	to	419+28.00	3,928	100		100
419+28.00	to	440+00.00	2,072	54		54
440+00.00	to	500+00.00	6,000	152		152
500+00.00	to	560+00.00	6,000	152		152
560+00.00	to	603+06.82BK=603+11.97AH	4,307	110		110
603+11.97	to	620+00.00	1,688	44		44

RAISED REFLECTIVE PAVEMENT MARKERS

STA.		STA.	LENGTH (FOOT)	78100100 RAISED REFLECTIVE PAVEMENT MARKER (EACH)		78300200 RAISED REFLECTIVE PAVEMENT MARKER REMOVAL (EACH)
				CRYSTAL	AMBER	
620+00.00	to	636+10.89	1,611	42		42
636+10.89	to	639+44.66	334	10		10
636+10.89	LT	639+44.66	334	10		10
639+44.66	to	680+00.00	4,055	103		103
680+00.00	to	740+00.00	6,000	152		152
740+00.00	to	800+00.00	6,000	152		152
800+00.00	to	809+85.00BK=161+10.28AH	985	27		27
161+10.28	to	178+63.03	1,753	46		46
178+63.03	to	181+93.25	330	10		10
181+93.25	LI	181+93.25	330	10		10
181+93.25	to	211+00.00	2,907	75		75
211+00.00	to	246+00.00	3,500	90		90
IL-16 - MONTGOMERY COUNTY						
RAMP 1						
103+02.64	LT	106+62.39	360	10		10
100+00.00	RT	106+62.39	662	34		34
106+62.39	LT	114+97.77	835		22	22
RAMP 3						
300+00.00	RT	306+08.75	609	31		31
303+02.59	LT	306+08.75	306	9		9
306+08.75	LT	314+97.32	889		23	23
IL-138 - MACOUPIN COUNTY						
RAMP 1						
100+00.00	RT	103+02.71	303	16		16
103+02.71	RT	105+86.73	284	15		15
103+02.71	LT	105+86.73	284	8		8
105+86.73	LT	112+29.34	643		17	17
RAMP 3						
300+00.00	RT	303+02.62	303	16		16
303+02.62	LT	306+35.91	333	9		9
303+02.62	RT	306+35.91	233	13		13
306+35.91	LT	312+00.83	565		15	15
STAUNTON RD - MACOUPIN COUNTY						
RAMP A						
00+00.00	RT	02+51.00	251	14		14
02+51.00	LT	06+62.39	411	11		11
02+51.00	RT	06+62.39	411	22		22
06+62.39	LT	14+21.29	759		20	20
RAMP C						
00+00.00	RT	03+03.83	304	16		16
03+03.83	LT	06+33.59	330	9		9
03+03.83	RT	06+33.59	330	17		17
06+33.59	LT	13+44.42	711		19	19
TOTAL MONTGOMERY COUNTY				914	45	959
TOTAL MACOUPIN COUNTY				3,247	71	3,318
PROJECT TOTAL				4,277		4,277

MODEL - Schedule-5 (Sheet)
FILE NAME - c:\p\work\w\10156\fercal\0946028\0672D00-sht-Schedule5.dgn

USER NAME = Christopher.Siefert	DESIGNED -	REVISED -
	DRAWN -	REVISED -
	CHECKED -	REVISED -
PLOT DATE = 10/16/2024	DATE -	REVISED -

**STATE OF ILLINOIS
DEPARTMENT OF TRANSPORTATION**

SCHEDULE OF QUANTITIES

SCALE: SHEET 5 OF 6 SHEETS STA. TO STA.

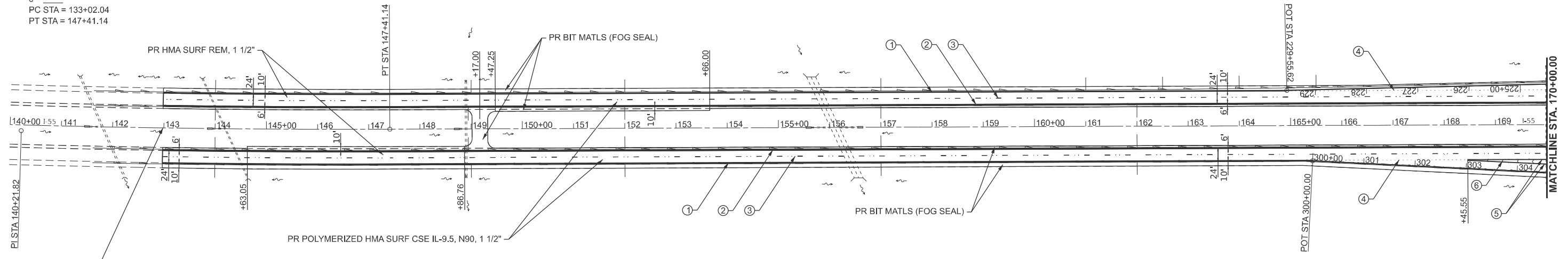
F.A.I. RTE.	SECTION	COUNTY	TOTAL SHEETS	SHEET NO.
55	(59-1,2,68-1)RS-4	*	42	14
CONTRACT NO. 72D00				
ILLINOIS FED. AID PROJECT				
* MONTGOMERY & MACOUPIN				

D672D00 ALIGNMENT SCHEDULE - NAD83/2007 ADJ						
Point Type	Station	Northing	Easting	Radius	Length	Angle
Alignment Name: E007						
Description: I-55 Mainline						
POT	2+22.00	929941.070	2443358.337			
PC	43+37.75	926363.610	2441323.344			
PI	47+92.67	925968.190	2441098.414	48822.83	909.81	454.92
PT	52+47.56	925577.030	2440866.155			
PI	62+98.94	924673.007	2440329.374			
PI	125+00.00	919340.399	2437164.498			
PC	133+02.04	918650.671	2436755.183			
PI	140+21.82	918031.676	2436387.844	22940.18	1439.1	719.79
PT	147+41.14	917390.870	2436060.034			
PI	188+14.83	913764.174	2434204.763			
PI	214+50.08	911418.151	2433004.463			
POT	236+58.39	909452.190	2431998.663			
Alignment Name: M003						
Description: I-55 Mainline						
POT	236+61.67	909452.190	2431998.663			
PC	249+05.09	908345.227	2431432.333			
PI	253+17.60	907977.988	2431244.451	22820.22	824.93	412.51
PT	257+30.02	907617.779	2431043.419			
PI	274+12.29	906148.800	2430223.584			
PI	297+01.70	904149.995	2429107.257			
PI	343+03.68	900078.996	2426836.700			
PI	360+32.90	897922.025	2425603.592			
PI	413+00.97	894020.223	2423456.517			
PI	439+38.39	891716.860	2422171.806			
PI	467+62.45	889250.629	2420795.931			
PC	502+41.49	886212.436	2419100.923			
PI	527+43.91	884027.106	2417881.727	14362.81	4955.1	2502.42
PT	551+96.59	882382.865	2415995.308			
PC	570+70.64	881151.498	2414582.575			
PI	587+92.69	880020.007	2413284.429	3825.15	3236.18	1722.05
PT	603+06.82	878298.010	2413270.898			
Alignment Name: M002						
Description: I-55 Mainline						
POT	603+11.97	878298.010	2413270.898			
PI	620+00.00	876010.051	2413252.920			
PI	637+84.60	874825.488	2413244.083			
PC	643+78.26	874231.840	2413239.693			
PI	648+81.52	873728.594	2413235.971	42221.28	1006.47	503.26
PT	653+84.73	873225.402	2413244.246			
PI	666+03.95	872006.348	2413264.292			
PC	677+82.50	870827.951	2413283.094			
PI	683+96.25	870214.279	2413292.885	174231.28	1227.49	613.75
PT	690+09.99	869600.553	2413298.353			
PI	700+00.42	868610.167	2413307.176			
PI	719+99.78	866610.881	2413325.016			
PI	729+99.57	865611.140	2413333.997			
PC	744+53.00	864157.771	2413347.353			
PT	755+56.92	863053.898	2413357.497	5737.34	2181.18	1103.92
PI	766+34.18	862032.605	2413776.544			
PI	775+98.11	861140.826	2414142.450			
PC	788+50.81	859973.646	2414621.592			
PI	799+34.80	858979.189	2415029.830	5720.14	2125.19	1074.99
PT	809+85.00	857904.373	2415049.188			
Alignment Name: M001						
Description: I-55 Mainline						
POT	161+10.28	857904.373	2415049.188			
PI	165+99.68	857415.046	2415058.001			
PI	176+00.00	856414.891	2415075.92			
PC	186+85.17	855329.885	2415094.84			
PI	192+08.72	854806.415	2415103.968	39304.49	1047.04	523.55
PT	197+32.21	854282.887	2415099.15			
PI	230+99.91	850915.329	2415068.157			
PC	240+53.16	849962.119	2415059.404			
PI	245+49.35	849465.95	2415054.848	42142.76	992.33	496.19
PT	250+45.49	848969.811	2415061.975			

Alignment Name: L001						
Description: IL 16 Overpass						
POT	99+86.47	913870.574	2431224.561			
PI	115+19.52	913869.474	2432777.618			
PI	130+00.00	913868.426	2434258.094			
POT	143+20.15	913867.491	2435578.243			
Alignment Name: L002						
Description: IL 16 Overpass						
PC	896+71.19	913867.491	2435578.243			
PI	903+00.72	913867.045	2436207.773	2297.65	1228.9	629.53
PT	909+00.09	914187.541	2436749.613			
PC	915+53.27	914520.076	2437311.807			
PI	920+85.33	914790.95	2437769.754	2895.34	1052.38	532.06
PT	926+05.65	914881.316	2438294.084			
POT	928+60.18	914924.547	2438544.922			
Alignment Name: R009						
Description: IL 16 Ramp						
POT	300+00.00	915818.6	2435178.219			
PC	306+62.40	915245.632	2434845.828			
PI	311+26.92	914843.829	2434612.733	764.9	834.91	464.52
PT	314+97.32	914865.38	2434148.713			
PC	317+46.01	914876.918	2433900.283			
PI	324+93.01	914911.574	2433154.087	545.65	1025.73	747
PT	327+71.75	914190.19	2433348.034			
POT	331+04.33	913869.009	2433434.384			
Alignment Name: R010						
Description: IL 16 Ramp						
POT	400+00.00	913835.672	2432498.601			
PC	406+62.40	913800.236	2433180.054			
PI	412+77.74	913767.318	2433774.512	599.51	957.33	615.34
PCC	416+19.73	913153.926	2433725.690			
PI	417+65.14	913008.981	2433714.04	769.89	287.42	145.41
PT	419+07.16	912878.235	2433650.414			
POT	429+56.09	911935.056	2433191.421			
Alignment Name: R011						
Description: IL 16 Ramp						
POT	100+00.00	911916.392	2433336.885			
PC	106+62.39	912489.334	2433669.3			
PI	111+26.91	912891.126	2433902.414	764.74	834.88	464.52
PT	114+97.27	912869.467	2434366.429			
PC	117+45.93	912857.873	2434614.812			
PI	123+18.01	912831.198	2435196.27	545.08	882.55	572.08
PT	126+28.48	913403.278	2435185.309			
PC	128+52.73	913627.53	2435184.933			
PI	129+83.91	913758.11	2435184.712	433.2	254.86	131.24
PT	131+07.60	913867.821	2435111.694			
Alignment Name: R012						
Description: IL 16 Ramp						
POT	202+63.03	913908.292	2435755.221			
PC	206+72.45	913936.807	2435346.792			
PI	212+78.29	913979.001	2434742.42	600.56	948.62	605.84
PCC	216+21.07	914582.98	2434789.907			
PI	217+64.57	914726.042	2434801.154	757.62	283.65	143.5
PT	219+04.71	914855.08	2434863.941			
POT	229+55.62	915800.059	2435323.744			
Alignment Name: R013						
Description: IL 16 Ramp						
POT	500+00.00	913834.588	2434028.51			
PC	506+62.41	913799.149	2434689.976			
PI	507+63.34	913793.749	2434790.761	600.02	199.99	100.93
PCC	508+62.40	913755.673	2434884.234			
PI	509+66.28	913716.484	2434980.437	299.98	200	103.88
PCC	510+62.41	913626.196	2435031.804			
PI	517+08.51	913064.615	2435351.3	450	866.19	646.1
PCC	519+28.60	912959.652	2434713.778			
PI	525+75.22	912854.605	2434075.748	450.28	866.8	646.62
PCC	527+95.40	913489.458	2434198.548			
PI	528+94.58	913586.84	2434217.385	753.44	197.24	99.19
PT	529+92.64	913676.029	2434260.783			
POT	540+44.00	914621.41	2434720.793			
Alignment Name: R014						
Description: IL 16 Ramp						
POT	600+00.00	913902.263	2434487.678			
PC	606+62.40	913937.703	2433826.222			
PI	607+63.33	913943.103	2433725.437	600.02	199.99	100.93
PCC	608+62.39	913981.179	2433631.965			
PI	609+66.27	914020.367	2433535.762	300.1	200.01	103.88
PCC	610+62.40	914110.644	2433484.373			
PI	617+08.46	914672.111	2433164.764	449.97	866.13	646.06
PCC	619+28.53	914777.219	2433802.219			
PI	625+74.72	914882.348	2434439.798	449.89	866.14	646.19
PCC	627+94.67	914247.912	2434317.116			
PI	628+96.33	914148.101	2434297.815	771.96	202.16	101.66
PT	629+96.83	914056.690	2434253.332			
POT	640+45.70	913113.555	2433794.380			

Alignment Name: A138						
Description: IL 138 Overpass						
POT	76+00.14	876087.863	2411154.476			
POT	100+00.00	876131.826	2413253.877			
POT	114+73.92	876162.685	2414727.478			
Alignment Name: R005						
Description: IL 138 Ramp						
POT	300+00.00	874361.836	2413309.656			
PC	306+62.39	875023.023	2413349.52			
PI	309+43.43	875033.653	2413366.433	761.12	538.44	281.04
PT	312+00.83	875505.773	2413561.601			
PC	314+39.41	875677.44	2413727.281			
PI	315+67.52	875769.621	2413816.247	475.08	250.27	128.11
PT	316+89.67	875894.033	2413846.806			
POT	319+48.65	876145.537	2413908.583			

EX CURVE
 PI STA = 140+21.82
 $\Delta = 03^{\circ}35'40"$ (LT)
 D = 00°14'59"
 R = 22,940.18'
 T = 719.79'
 L = 1439.10'
 E = 11.29'
 e =
 PC STA = 133+02.04
 PT STA = 147+41.14

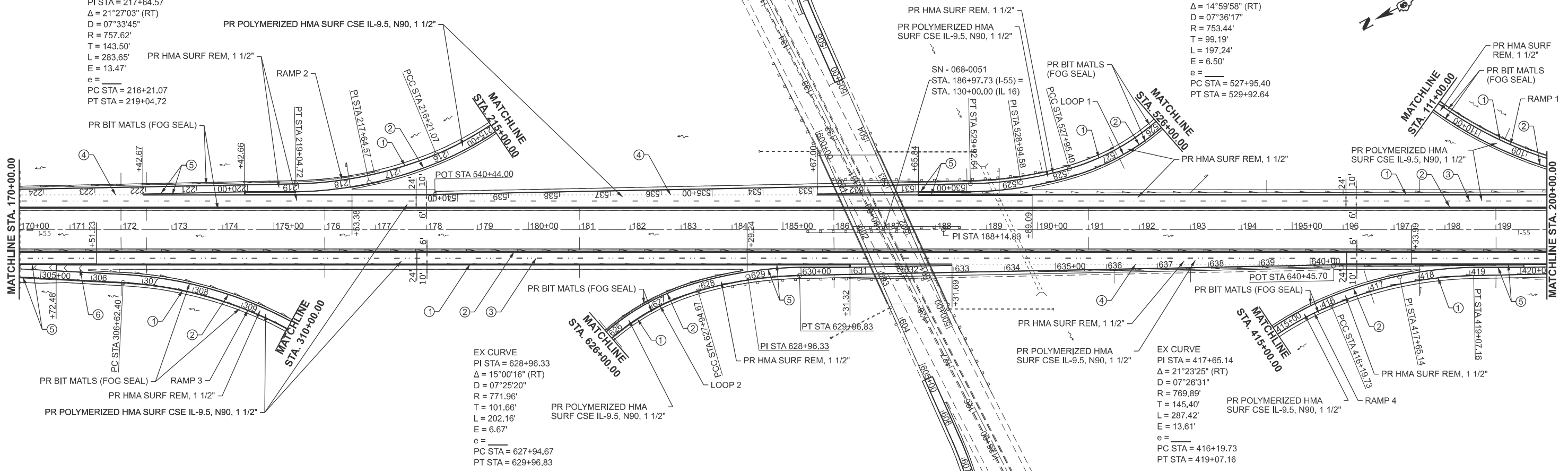


- PAVEMENT MARKING LEGEND**
- ① PR MODIFIED URETHANE PAVEMENT MARKING (WHITE) LINE - 6"
 - ② PR MODIFIED URETHANE PAVEMENT MARKING (YELLOW) LINE - 6"
 - ③ PR MODIFIED URETHANE PAVEMENT MARKING (SKIP DASH WHITE) LINE - 6"
 - ④ PR MODIFIED URETHANE PAVEMENT MARKING (DOTTED WHITE) LINE - 6"
 - ⑤ PR MODIFIED URETHANE PAVEMENT MARKING (WHITE) - LINE 8"
 - ⑥ PR MODIFIED URETHANE PAVEMENT MARKING (WHITE) - LINE 12"
 - ⑦ PR MODIFIED URETHANE PAVEMENT MARKING (WHITE) - LINE 24"
 - ⑧ PR MODIFIED URETHANE PAVEMENT MARKING (WHITE) - LETTERS & SYMBOLS

NOTE: HMA SURFACE REMOVAL AND REPLACEMENT SHALL EXTEND 1' INTO THE PAVED SHOULDER.

EX CURVE
 PI STA = 217+64.57
 $\Delta = 21^{\circ}27'03"$ (RT)
 D = 07°33'45"
 R = 757.62'
 T = 143.50'
 L = 283.65'
 E = 13.47'
 e =
 PC STA = 216+21.07
 PT STA = 219+04.72

EX CURVE
 PI STA = 528+94.58
 $\Delta = 14^{\circ}59'58"$ (RT)
 D = 07°36'17"
 R = 753.44'
 T = 99.19'
 L = 197.24'
 E = 6.50'
 e =
 PC STA = 527+95.40
 PT STA = 529+92.64



EX CURVE
 PI STA = 628+96.33
 $\Delta = 15^{\circ}00'16"$ (RT)
 D = 07°25'20"
 R = 771.96'
 T = 101.66'
 L = 202.16'
 E = 6.67'
 e =
 PC STA = 627+94.67
 PT STA = 629+96.83

EX CURVE
 PI STA = 417+65.14
 $\Delta = 21^{\circ}23'25"$ (RT)
 D = 07°26'31"
 R = 769.89'
 T = 145.40'
 L = 287.42'
 E = 13.61'
 e =
 PC STA = 416+19.73
 PT STA = 419+07.16

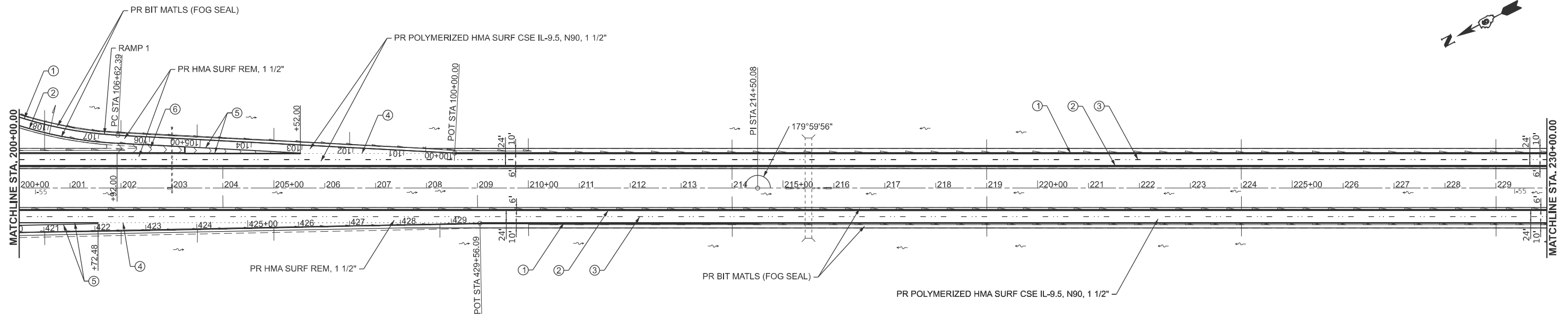
MODEL: E:\CL\23 - RTR - 1 (Sheet)
 FILE NAME: P:\Bids\2024\72D00\Drawings\72D00-1-18-24.dwg

USER NAME = Christopher.Stiefert	DESIGNED -	REVISED -
PLOT SCALE = SCALES	DRAWN -	REVISED -
PLOT DATE = 10/16/2024	CHECKED -	REVISED -
	DATE -	REVISED -

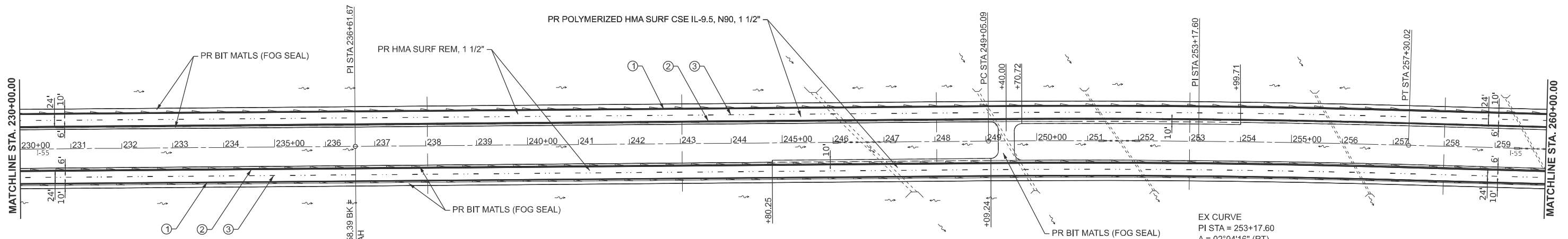
**STATE OF ILLINOIS
 DEPARTMENT OF TRANSPORTATION**

PLAN SHEET	
SCALE: 1"=100'	SHEET 1 OF 19 SHEETS
STA.	TO STA.

F.A.I. RTE.	SECTION	COUNTY	TOTAL SHEETS	SHEET NO.
55	(59-1.2,68-1)RS-4		42	17
CONTRACT NO. 72D00				
ILLINOIS FED. AID PROJECT				



NOTE: HMA SURFACE REMOVAL AND REPLACEMENT SHALL EXTEND 1' INTO THE PAVED SHOULDER.



EX CURVE
 PI STA = 253+17.60
 $\Delta = 02^{\circ}04'16''$ (RT)
 $D = 00^{\circ}15'04''$
 $R = 22,820.22'$
 $T = 412.51'$
 $L = 824.93'$
 $E = 3.73'$
 $e =$
 $PC STA = 249+05.09$
 $PT STA = 257+30.02$

PAVEMENT MARKING LEGEND

- ① PR MODIFIED URETHANE PAVEMENT MARKING (WHITE) LINE - 6"
- ② PR MODIFIED URETHANE PAVEMENT MARKING (YELLOW) LINE - 6"
- ③ PR MODIFIED URETHANE PAVEMENT MARKING (SKIP DASH WHITE) LINE - 6"
- ④ PR MODIFIED URETHANE PAVEMENT MARKING (DOTTED WHITE) LINE - 6"
- ⑤ PR MODIFIED URETHANE PAVEMENT MARKING (WHITE) - LINE 8"
- ⑥ PR MODIFIED URETHANE PAVEMENT MARKING (WHITE) - LINE 12"
- ⑦ PR MODIFIED URETHANE PAVEMENT MARKING (WHITE) - LINE 24"
- ⑧ PR MODIFIED URETHANE PAVEMENT MARKING (WHITE) - LETTERS & SYMBOLS

MODEL: E:\CL03 - Plan 3 (Sheet)
 FILE NAME: P:\Bids\2024\10\16\DOT\DOT Documents\DOT Office\District 6\ORD Projects\672D00\CD\Drawings\672D00-14-PR.dgn

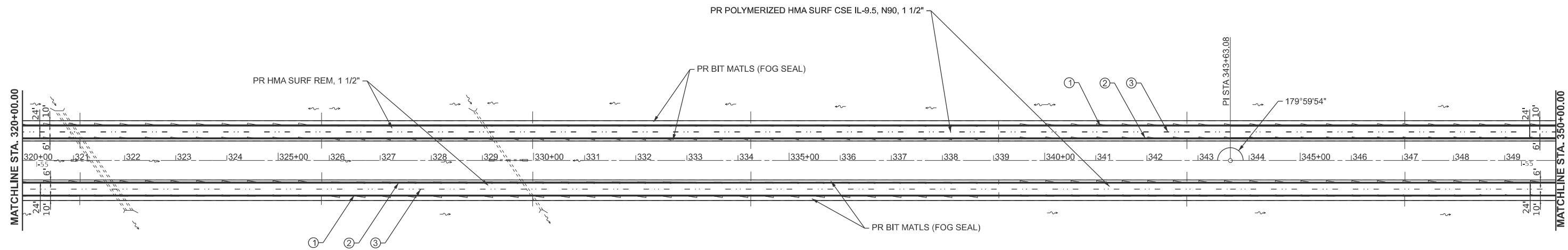
USER NAME = Christopher.Siefert	DESIGNED -	REVISED -
PLOT SCALE = \$SCALE\$	DRAWN -	REVISED -
PLOT DATE = 10/16/2024	CHECKED -	REVISED -
	DATE -	REVISED -

STATE OF ILLINOIS
 DEPARTMENT OF TRANSPORTATION

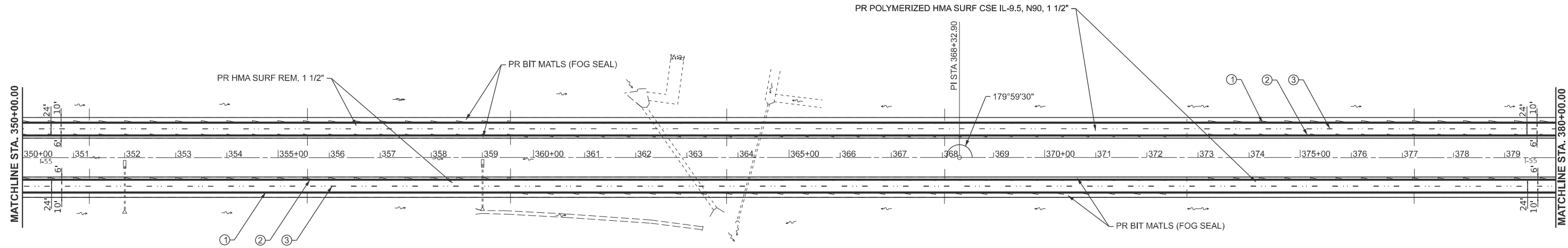
PLAN SHEET

SCALE: 1"=100' SHEET 2 OF 19 SHEETS STA. TO STA.

F.A.I. RTE.	SECTION	COUNTY	TOTAL SHEETS	SHEET NO.
55	(59-1.2,68-1)RS-4		42	18
CONTRACT NO. 72D00				
ILLINOIS FED. AID PROJECT				



NOTE: HMA SURFACE REMOVAL AND REPLACEMENT SHALL EXTEND 1' INTO THE PAVED SHOULDER.



- PAVEMENT MARKING LEGEND**
- ① PR MODIFIED URETHANE PAVEMENT MARKING (WHITE) LINE - 6"
 - ② PR MODIFIED URETHANE PAVEMENT MARKING (YELLOW) LINE - 6"
 - ③ PR MODIFIED URETHANE PAVEMENT MARKING (SKIP DASH WHITE) LINE - 6"
 - ④ PR MODIFIED URETHANE PAVEMENT MARKING (DOTTED WHITE) LINE - 6"
 - ⑤ PR MODIFIED URETHANE PAVEMENT MARKING (WHITE) - LINE 8"
 - ⑥ PR MODIFIED URETHANE PAVEMENT MARKING (WHITE) - LINE 12"
 - ⑦ PR MODIFIED URETHANE PAVEMENT MARKING (WHITE) - LINE 24"
 - ⑧ PR MODIFIED URETHANE PAVEMENT MARKING (WHITE) - LETTERS & SYMBOLS

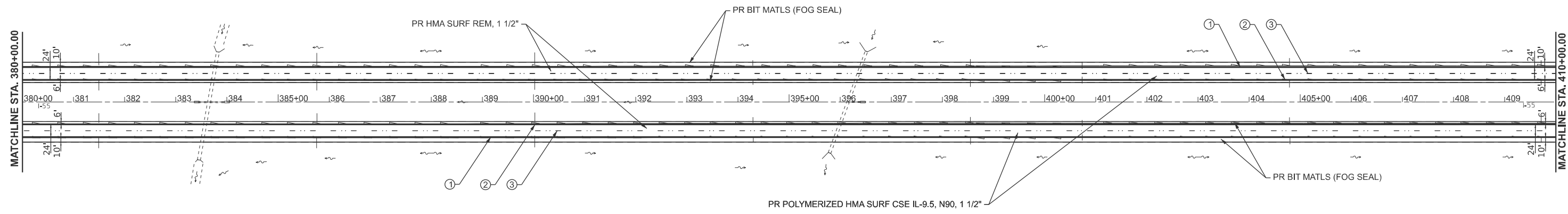
MODEL: E:\CL03 - Plan 7 (Sheet)
 FILE NAME: P:\Bids\pcc\ibm\DOT\Office\District 6\ORD Project\B72D00\CADD\Drawings\CD\Sheet\B72D00-4-PR.dgn

USER NAME = Christopher.Siefert	DESIGNED -	REVISED -
	DRAWN -	REVISED -
PLOT SCALE = \$SCALE\$	CHECKED -	REVISED -
PLOT DATE = 10/16/2024	DATE -	REVISED -

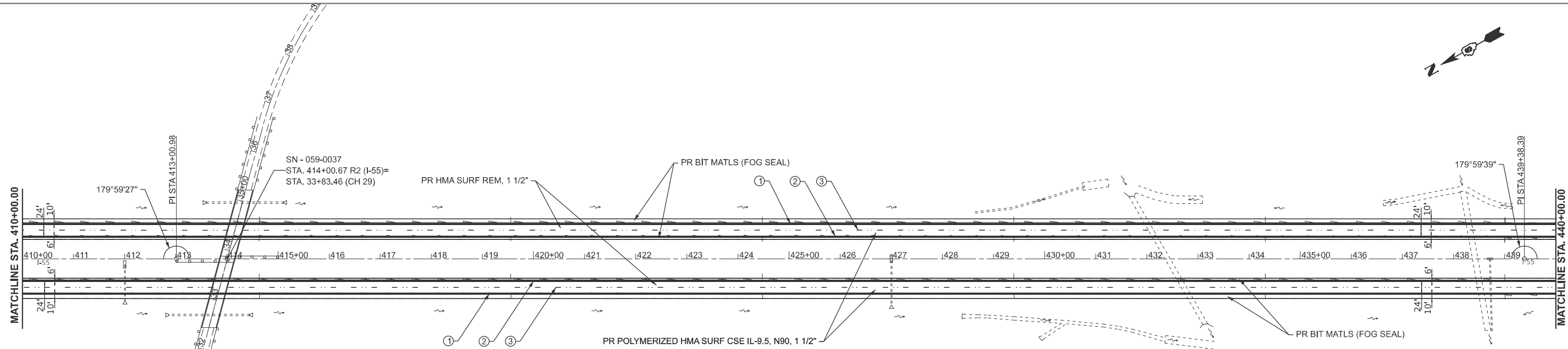
**STATE OF ILLINOIS
DEPARTMENT OF TRANSPORTATION**

PLAN SHEET			
SCALE: 1"=100'	SHEET 4	OF 19 SHEETS	STA. TO STA.

F.A.I. RTE. 55	SECTION (59-1.2.68-1)RS-4	COUNTY *	TOTAL SHEETS 42	SHEET NO. 20
CONTRACT NO. 72D00			ILLINOIS FED. AID PROJECT	



NOTE: HMA SURFACE REMOVAL AND REPLACEMENT SHALL EXTEND 1' INTO THE PAVED SHOULDER.



- PAVEMENT MARKING LEGEND**
- ① PR MODIFIED URETHANE PAVEMENT MARKING (WHITE) LINE - 6"
 - ② PR MODIFIED URETHANE PAVEMENT MARKING (YELLOW) LINE - 6"
 - ③ PR MODIFIED URETHANE PAVEMENT MARKING (SKIP DASH WHITE) LINE - 6"
 - ④ PR MODIFIED URETHANE PAVEMENT MARKING (DOTTED WHITE) LINE - 6"
 - ⑤ PR MODIFIED URETHANE PAVEMENT MARKING (WHITE) - LINE 8"
 - ⑥ PR MODIFIED URETHANE PAVEMENT MARKING (WHITE) - LINE 12"
 - ⑦ PR MODIFIED URETHANE PAVEMENT MARKING (WHITE) - LINE 24"
 - ⑧ PR MODIFIED URETHANE PAVEMENT MARKING (WHITE) - LETTERS & SYMBOLS

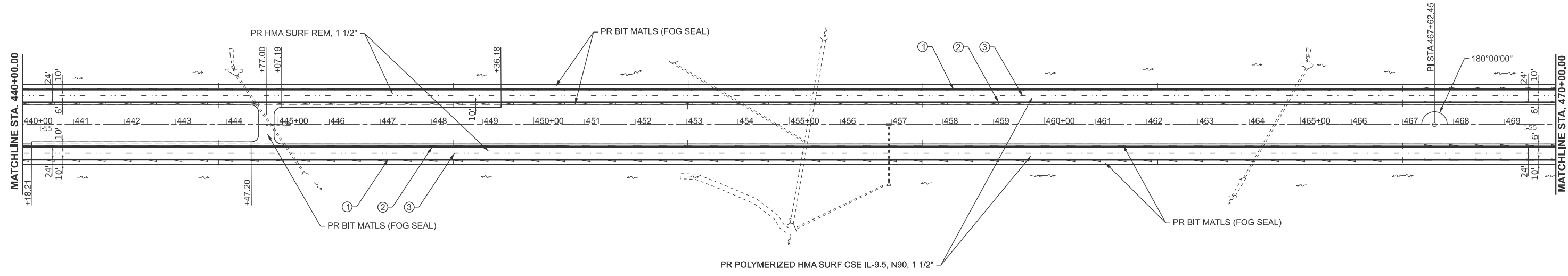
MODEL: E:\CL03 - RTR 0 (Sheet)
 FILE NAME: P:\Bids\2024\72D00\DOT\Office\Drawings\DOT\72D00\440+00-440+00.dgn

USER NAME = Christopher.Stiefert	DESIGNED -	REVISED -
	DRAWN -	REVISED -
PLOT SCALE = \$SCALE\$	CHECKED -	REVISED -
PLOT DATE = 10/16/2024	DATE -	REVISED -

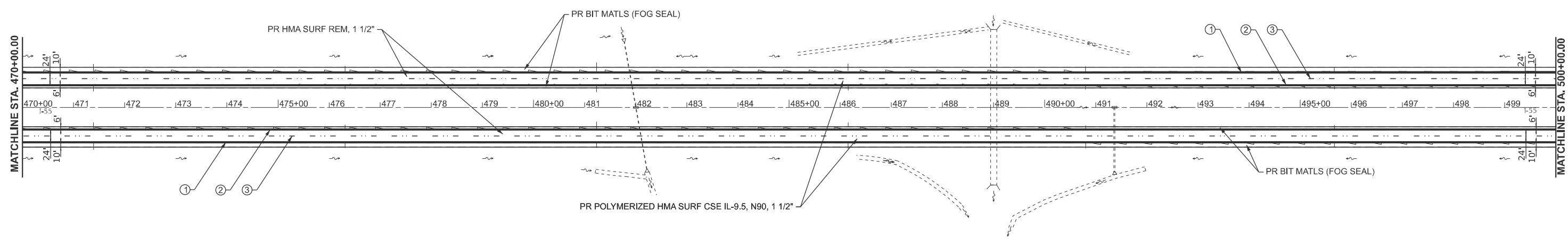
STATE OF ILLINOIS
DEPARTMENT OF TRANSPORTATION

PLAN SHEET			
SCALE: 1"=100'	SHEET 5	OF 19 SHEETS	STA. TO STA.

F.A.I. RTE.	SECTION	COUNTY	TOTAL SHEETS	SHEET NO.
55	(59-1.2,68-1)RS-4		42	21
CONTRACT NO. 72D00				
ILLINOIS FED. AID PROJECT				



NOTE: HMA SURFACE REMOVAL AND REPLACEMENT SHALL EXTEND 1' INTO THE PAVED SHOULDER.



- PAVEMENT MARKING LEGEND**
- ① PR MODIFIED URETHANE PAVEMENT MARKING (WHITE) LINE - 6"
 - ② PR MODIFIED URETHANE PAVEMENT MARKING (YELLOW) LINE - 6"
 - ③ PR MODIFIED URETHANE PAVEMENT MARKING (SKIP DASH WHITE) LINE - 6"
 - ④ PR MODIFIED URETHANE PAVEMENT MARKING (DOTTED WHITE) LINE - 6"
 - ⑤ PR MODIFIED URETHANE PAVEMENT MARKING (WHITE) - LINE 8"
 - ⑥ PR MODIFIED URETHANE PAVEMENT MARKING (WHITE) - LINE 12"
 - ⑦ PR MODIFIED URETHANE PAVEMENT MARKING (WHITE) - LINE 24"
 - ⑧ PR MODIFIED URETHANE PAVEMENT MARKING (WHITE) - LETTERS & SYMBOLS

MODEL: E:\CL03 - Plan 1 (Sheet)
 FILE NAME: P:\Bids\2024\11\16\DOT\DOT Documents\DOT Office\District 6\ORD Project\67200\CD\Drawings\67200-11-16-24.dgn

USER NAME = Christopher.Siefert	DESIGNED -	REVISED -
PLOT SCALE = \$SCALE\$	DRAWN -	REVISED -
PLOT DATE = 10/16/2024	CHECKED -	REVISED -
	DATE -	REVISED -

STATE OF ILLINOIS
DEPARTMENT OF TRANSPORTATION

PLAN SHEET			
SCALE: 1"=100'	SHEET 6	OF 19 SHEETS	STA. TO STA.

F.A.I. RTE. 55	SECTION (59-1.2,68-1)RS-4	COUNTY *	TOTAL SHEETS 42	SHEET NO. 22
			CONTRACT NO. 72D00	
ILLINOIS FED. AID PROJECT				

EX CURVE
 PI STA = 13+04.64
 $\Delta = 47^{\circ}44'27''$ (RT)
 $D = 07^{\circ}30'00''$
 $R = 763.94'$
 $T = 338.06'$
 $L = 636.54'$
 $E = 71.46'$
 $e =$
 PC STA = 9+66.58
 PT STA = 16+03.13

EX CURVE
 PI STA = 10+28.00
 $\Delta = 51^{\circ}08'23''$ (RT)
 $D = 07^{\circ}29'53''$
 $R = 764.14'$
 $T = 365.62'$
 $L = 682.04'$
 $E = 82.97'$
 $e =$
 PC STA = 6+62.38
 PT STA = 13+44.42

EX CURVE
 PI STA = 10+76.47
 $\Delta = 56^{\circ}55'08''$ (RT)
 $D = 07^{\circ}30'00''$
 $R = 763.93'$
 $T = 414.08'$
 $L = 758.90'$
 $E = 105.01'$
 $e =$
 PC STA = 6+62.39
 PT STA = 14+21.29

EX CURVE
 PI STA = 13+17.07
 $\Delta = 53^{\circ}35'23''$ (RT)
 $D = 07^{\circ}30'23''$
 $R = 763.29'$
 $T = 385.48'$
 $L = 713.92'$
 $E = 91.82'$
 $e =$
 PC STA = 9+31.59
 PT STA = 16+45.51

NOTE: HMA SURFACE REMOVAL AND REPLACEMENT SHALL EXTEND 1' INTO THE PAVED SHOULDER.

EX CURVE
 PI STA = 192+08.72
 $\Delta = 01^{\circ}31'35''$ (RT)
 $D = 00^{\circ}08'45''$
 $R = 39,304.49'$
 $T = 523.55'$
 $L = 1047.04'$
 $E = 3.49'$
 $e =$
 PC STA = 186+85.17
 PT STA = 197+32.21

PAVEMENT MARKING LEGEND

- ① PR MODIFIED URETHANE PAVEMENT MARKING (WHITE) LINE - 6"
- ② PR MODIFIED URETHANE PAVEMENT MARKING (YELLOW) LINE - 6"
- ③ PR MODIFIED URETHANE PAVEMENT MARKING (SKIP DASH WHITE) LINE - 6"
- ④ PR MODIFIED URETHANE PAVEMENT MARKING (DOTTED WHITE) LINE - 6"
- ⑤ PR MODIFIED URETHANE PAVEMENT MARKING (WHITE) - LINE 8"
- ⑥ PR MODIFIED URETHANE PAVEMENT MARKING (WHITE) - LINE 12"
- ⑦ PR MODIFIED URETHANE PAVEMENT MARKING (WHITE) - LINE 24"
- ⑧ PR MODIFIED URETHANE PAVEMENT MARKING (WHITE) - LETTERS & SYMBOLS

USER NAME = Christopher.Stiefert	DESIGNED -	REVISED -
DRAWN -	REVISED -	
PLOT SCALE = SCALES	CHECKED -	REVISED -
PLOT DATE = 10/16/2024	DATE -	REVISED -

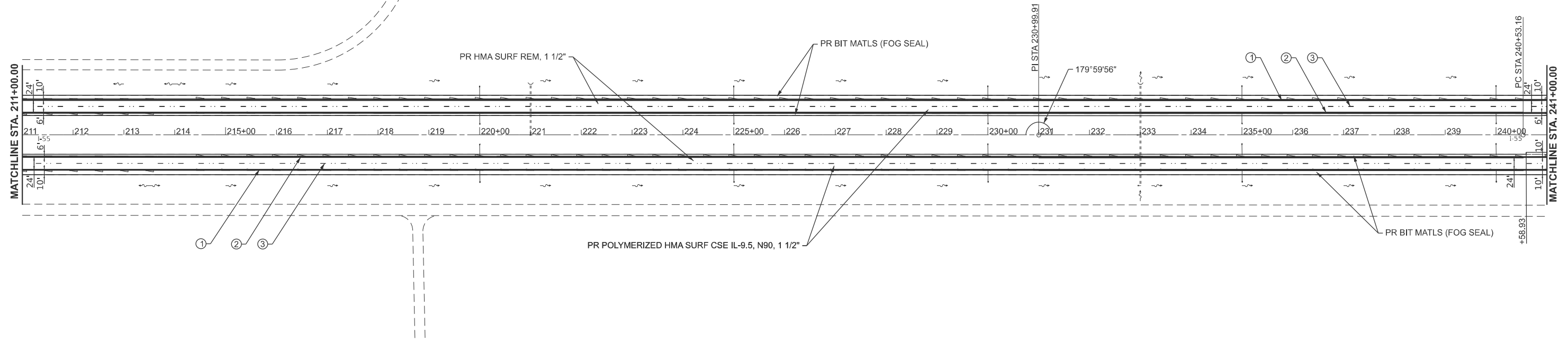
STATE OF ILLINOIS
 DEPARTMENT OF TRANSPORTATION

PLAN SHEET

SCALE: 1"=100' SHEET 12 OF 19 SHEETS STA. TO STA.

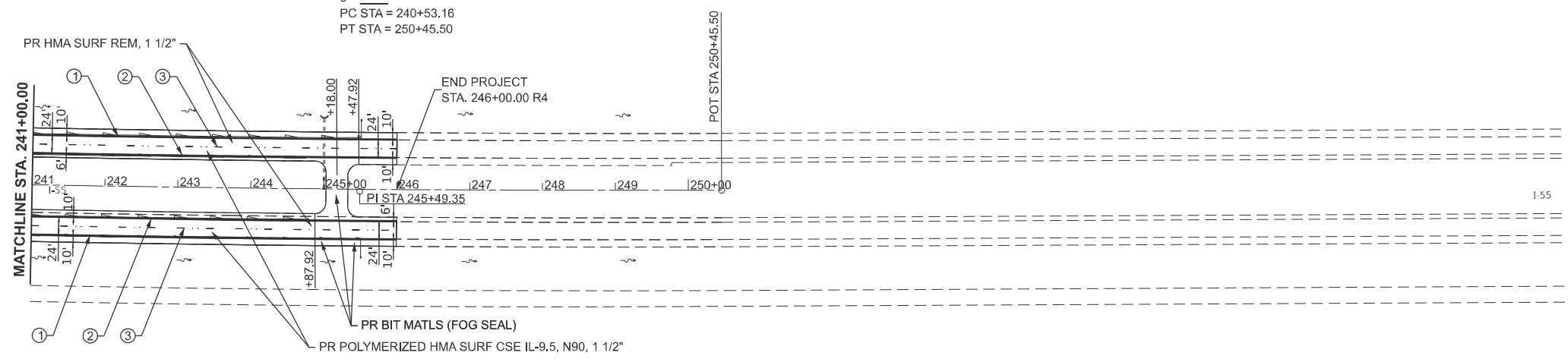
F.A.I. RTE. 55	SECTION (59-1.2,68-1)RS-4	COUNTY *	TOTAL SHEETS 42	SHEET NO. 28
CONTRACT NO. 72D00				
ILLINOIS FED. AID PROJECT				

MODEL: E:\C103 - Plan 2 (10/16/24)
 FILE NAME: P:\Bids\2024\72D00\Drawings\DOT\Office\Drawings\DOT\Drawings\72D00-12-PR-00.dwg



NOTE: HMA SURFACE REMOVAL AND REPLACEMENT SHALL EXTEND 1' INTO THE PAVED SHOULDER.

EX CURVE
 PI STA = 245+49.35
 $\Delta = 01^{\circ}20'57''$ (LT)
 $D = 00^{\circ}08'09''$
 $R = 42,142.76'$
 $T = 496.19'$
 $L = 992.33'$
 $E = 2.92'$
 $e =$
 PC STA = 240+53.16
 PT STA = 250+45.50



- PAVEMENT MARKING LEGEND**
- ① PR MODIFIED URETHANE PAVEMENT MARKING (WHITE) LINE - 6"
 - ② PR MODIFIED URETHANE PAVEMENT MARKING (YELLOW) LINE - 6"
 - ③ PR MODIFIED URETHANE PAVEMENT MARKING (SKIP DASH WHITE) LINE - 6"
 - ④ PR MODIFIED URETHANE PAVEMENT MARKING (DOTTED WHITE) LINE - 6"
 - ⑤ PR MODIFIED URETHANE PAVEMENT MARKING (WHITE) - LINE 8"
 - ⑥ PR MODIFIED URETHANE PAVEMENT MARKING (WHITE) - LINE 12"
 - ⑦ PR MODIFIED URETHANE PAVEMENT MARKING (WHITE) - LINE 24"
 - ⑧ PR MODIFIED URETHANE PAVEMENT MARKING (WHITE) - LETTERS & SYMBOLS

MODEL: E:\CL\23 - Rte 211 (16) - 1.dgn
 FILE NAME: P:\Bids\2024\23000\DOT\Drawings\DOT Office\Sheet\BORD Project\B72D00\CD\Drawings\B72D00-14-RP.dgn

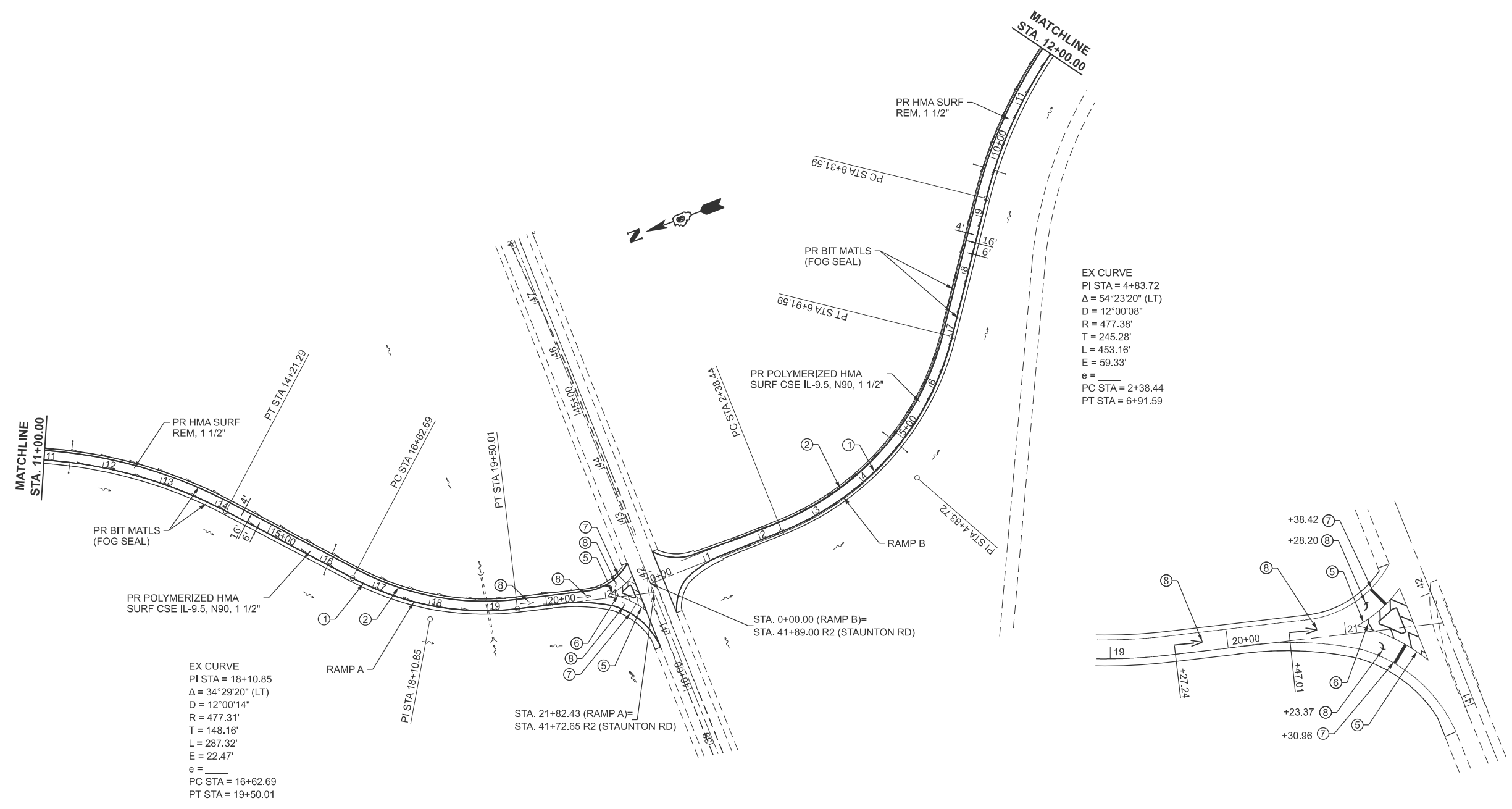
USER NAME = Christopher.Siefert	DESIGNED -	REVISED -
	DRAWN -	REVISED -
PLOT SCALE = \$SCALE\$	CHECKED -	REVISED -
PLOT DATE = 10/16/2024	DATE -	REVISED -

STATE OF ILLINOIS
DEPARTMENT OF TRANSPORTATION

PLAN SHEET
 SCALE: 1"=100' SHEET 13 OF 19 SHEETS STA. TO STA.

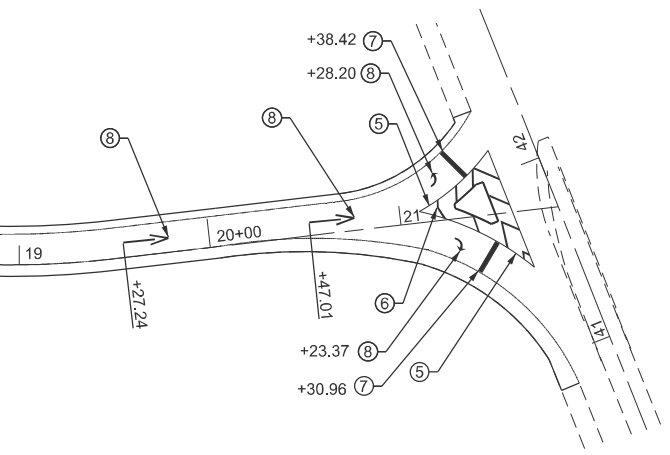
F.A.I. RTE.	SECTION	COUNTY	TOTAL SHEETS	SHEET NO.
55	(58-1.2,68-1)RS-4	*	42	29
CONTRACT NO. 72D00				
ILLINOIS FED. AID PROJECT				

MODEL: E:\CL05_85 STAUNTON EX17.2 (Sheet)
 FILE NAME: P:\BOS\proj\72000\DOT\Office\Drawings\DOT\Office\Drawings\72000-18-Plan_Rampas.dgn



EX CURVE
 PI STA = 18+10.85
 $\Delta = 34^{\circ}29'20''$ (LT)
 D = 12^{\circ}00'14''
 R = 477.31'
 T = 148.16'
 L = 287.32'
 E = 22.47'
 e =
 PC STA = 16+62.69
 PT STA = 19+50.01

EX CURVE
 PI STA = 4+83.72
 $\Delta = 54^{\circ}23'20''$ (LT)
 D = 12^{\circ}00'08''
 R = 477.38'
 T = 245.28'
 L = 453.16'
 E = 59.33'
 e =
 PC STA = 2+38.44
 PT STA = 6+91.59



- PAVEMENT MARKING LEGEND**
- ① PR MODIFIED URETHANE PAVEMENT MARKING (WHITE) LINE - 6"
 - ② PR MODIFIED URETHANE PAVEMENT MARKING (YELLOW) LINE - 6"
 - ③ PR MODIFIED URETHANE PAVEMENT MARKING (SKIP DASH WHITE) LINE - 6"
 - ④ PR MODIFIED URETHANE PAVEMENT MARKING (DOTTED WHITE) LINE - 6"
 - ⑤ PR MODIFIED URETHANE PAVEMENT MARKING (WHITE) - LINE 8"
 - ⑥ PR MODIFIED URETHANE PAVEMENT MARKING (WHITE) - LINE 12"
 - ⑦ PR MODIFIED URETHANE PAVEMENT MARKING (WHITE) - LINE 24"
 - ⑧ PR MODIFIED URETHANE PAVEMENT MARKING (WHITE) - LETTERS & SYMBOLS

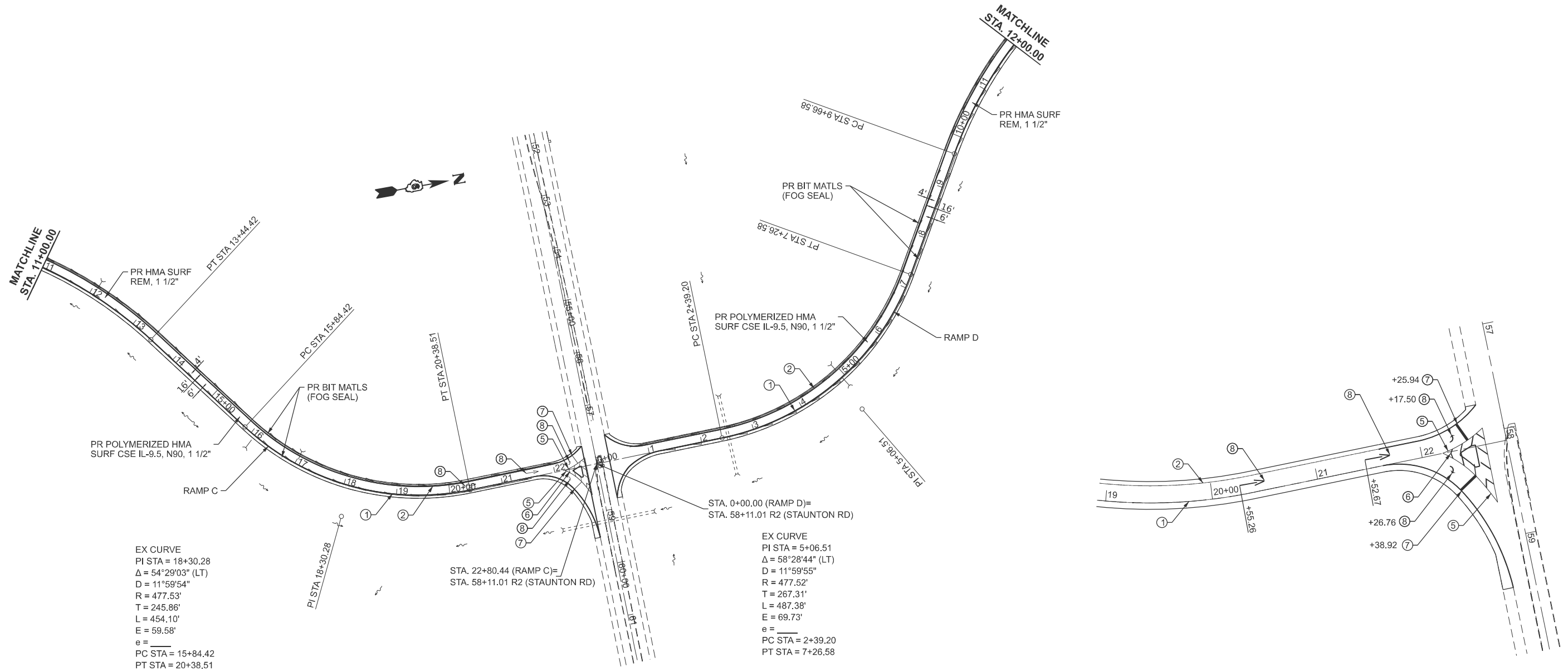
USER NAME = Christopher.Stiefert	DESIGNED -	REVISED -
	DRAWN -	REVISED -
PLOT SCALE = \$SCALE\$	CHECKED -	REVISED -
PLOT DATE = 10/16/2024	DATE -	REVISED -

**STATE OF ILLINOIS
 DEPARTMENT OF TRANSPORTATION**

PLAN SHEET	
STAUNTON ROAD INTERCHANGE	
SCALE: 1"=100'	SHEET 18 OF 19 SHEETS
STA.	TO STA.

F.A.I. RTE.	SECTION	COUNTY	TOTAL SHEETS	SHEET NO.
55	(59-1.2,68-1)RS-4	*	42	34
CONTRACT NO. 72D00				
ILLINOIS FED. AID PROJECT				

MODEL: E:\CL05 - STAUNTON EX14-1 (18-24) FILE NAME: P:\Biospec\cl05\staunton\DOT\Office\District\CORD\Project\067200\ADDData\CAD\Sheet\067200-14-18-24-Rampas.dgn



EX CURVE
 PI STA = 18+30.28
 $\Delta = 54^{\circ}29'03''$ (LT)
 $D = 11^{\circ}59'54''$
 $R = 477.53'$
 $T = 245.86'$
 $L = 454.10'$
 $E = 59.58'$
 $e =$
 PC STA = 15+84.42
 PT STA = 20+38.51

STA. 22+80.44 (RAMP C)=
 STA. 58+11.01 R2 (STAUNTON RD)

EX CURVE
 PI STA = 5+06.51
 $\Delta = 58^{\circ}28'44''$ (LT)
 $D = 11^{\circ}59'55''$
 $R = 477.52'$
 $T = 267.31'$
 $L = 487.38'$
 $E = 69.73'$
 $e =$
 PC STA = 2+39.20
 PT STA = 7+26.58

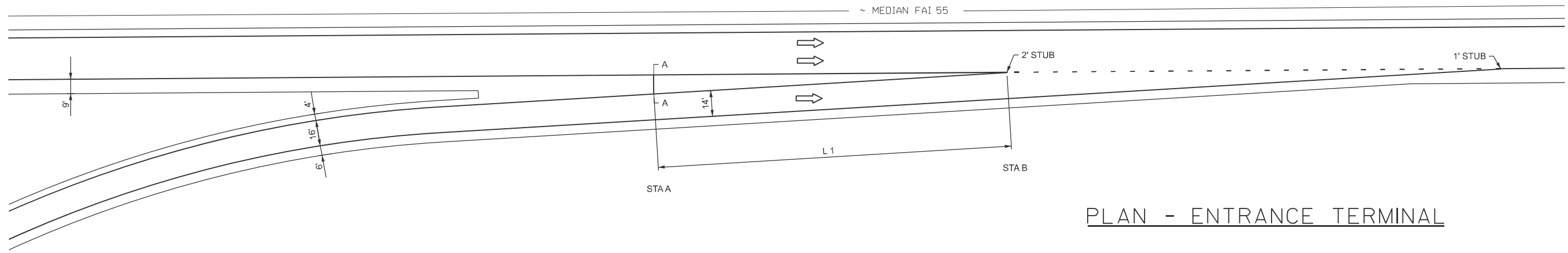
- PAVEMENT MARKING LEGEND**
- ① PR MODIFIED URETHANE PAVEMENT MARKING (WHITE) LINE - 6"
 - ② PR MODIFIED URETHANE PAVEMENT MARKING (YELLOW) LINE - 6"
 - ③ PR MODIFIED URETHANE PAVEMENT MARKING (SKIP DASH WHITE) LINE - 6"
 - ④ PR MODIFIED URETHANE PAVEMENT MARKING (DOTTED WHITE) LINE - 6"
 - ⑤ PR MODIFIED URETHANE PAVEMENT MARKING (WHITE) - LINE 8"
 - ⑥ PR MODIFIED URETHANE PAVEMENT MARKING (WHITE) - LINE 12"
 - ⑦ PR MODIFIED URETHANE PAVEMENT MARKING (WHITE) - LINE 24"
 - ⑧ PR MODIFIED URETHANE PAVEMENT MARKING (WHITE) - LETTERS & SYMBOLS

USER NAME = Christopher.Stiefert	DESIGNED -	REVISED -
DRAWN -	REVISED -	
PLOT SCALE = \$SCALE\$	CHECKED -	REVISED -
PLOT DATE = 10/16/2024	DATE -	REVISED -

**STATE OF ILLINOIS
 DEPARTMENT OF TRANSPORTATION**

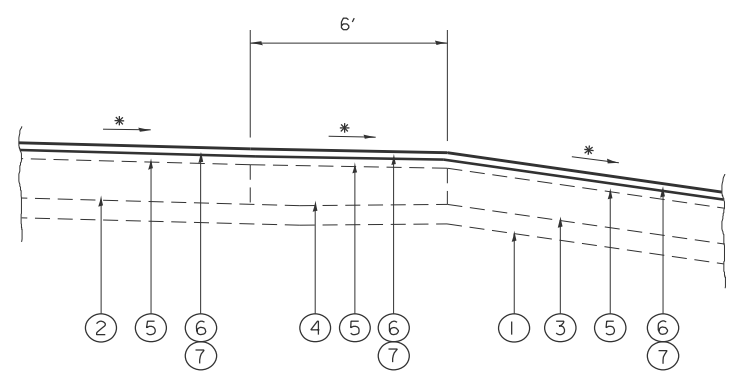
PLAN SHEET	
STAUNTON ROAD INTERCHANGE	
SCALE: 1"=100'	SHEET 19 OF 19 SHEETS STA. TO STA.

F.A.I. RTE.	SECTION	COUNTY	TOTAL SHEETS	SHEET NO.
55	(59-1.2,68-1)RS-4	*	42	35
CONTRACT NO. 72D00				
ILLINOIS FED. AID PROJECT				



PLAN - ENTRANCE TERMINAL

INTERCHANGE	RAMP	ADJ MAINLINE	STAA		STAB		L1 (FOOT)
			RAMP	MAINLINE	RAMP	MAINLINE	
IL 16	2	NB I-55	220+06	174+43	222+06	172+43	200
IL 16	4	SB I-55	420+06	199+55	422+06	201+55	200
IL 16	LOOP 1	NB I-55	530+95	187+66	532+93	185+68	198
IL 16	LOOP 2	SB I-55	630+96	186+31	632+97	188+32	201
IL 138	B	SB I-55	215+23	638+47	217+05	640+29	182
IL 138	D	NB I-55	413+68	612+62	415+68	610+62	200
FAU 8136	B	SB I-55	17+63	179+83	19+66	181+86	203
FAU 8136	D	NB I-55	17+00	799+99	19+04	797+98	204



LEGEND

- ① EX STABILIZED SUB-BASE
 - ② EX CRC PAVEMENT
 - ③ EX PCC PAVEMENT
 - ④ EX HMA SHOULDER
 - ⑤ EX HMA SURFACE
 - ⑥ PR HMA SURFACE REMOVAL 1-1/2"
 - ⑦ PR HMA SURFACE COURSE 1-1/2"
- * MATCH EX SLOPE

SECTION A-A

RAMP 2 & 4, LOOP 1&2, IL 16
 RAMP B & D, IL 138
 RAMP B & D, FAU 8136

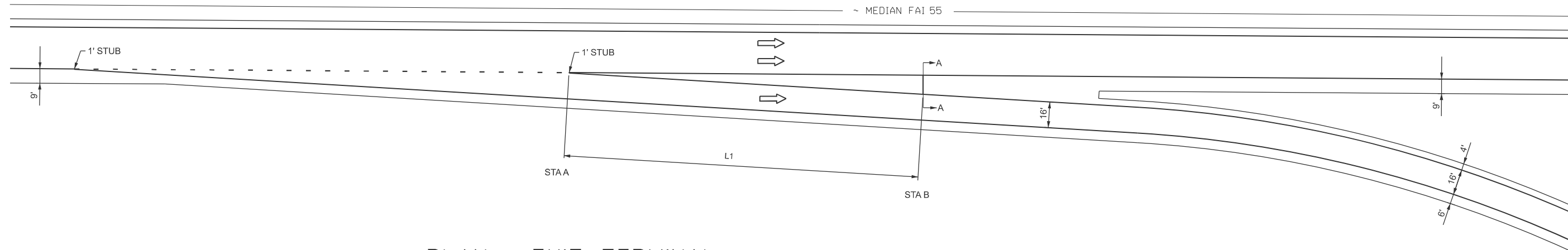
MODEL: ENTRANCE (Sheet)
 FILE NAME: c:\p\work\pav\detail\entrance\094628\0672\000-shit-details.dgn

USER NAME = Christopher.Siefert	DESIGNED -	REVISED -
	DRAWN -	REVISED -
	CHECKED -	REVISED -
PLOT DATE = 10/16/2024	DATE -	REVISED -

**STATE OF ILLINOIS
 DEPARTMENT OF TRANSPORTATION**

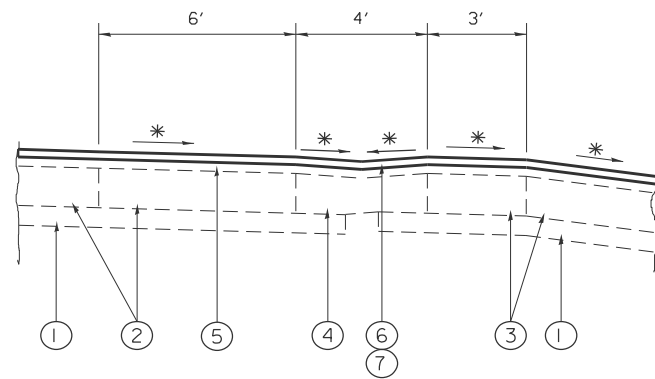
TYPICAL RAMP ENTRANCE TERMINAL			
SCALE:	SHEET 1	OF 7 SHEETS	STA. TO STA.

F.A.P. RTE.	SECTION	COUNTY	TOTAL SHEETS	SHEET NO.
55	(59-1,2,68-1)RS-4	*	42	36
CONTRACT NO. 72D00				
ILLINOIS FED. AID PROJECT * MONTGOMERY & MACOUPIN				



PLAN - EXIT TERMINAL

INTERCHANGE	RAMP	ADJ MAINLINE	STAA		STAB		L1 (FOOT)
			RAMP	MAINLINE	RAMP	MAINLINE	
IL 16	1	NB I-55	103+03	205+52	105+30	203+25	227
IL 16	3	SB I-55	303+03	168+45	305+30	170+73	227
IL 138	A	SB I-55	103+03	608+40	105+30	610+67	227
IL 138	C	NB I-55	303+03	639+45	305+28	637+20	225
FAU 8136	A	SB I-55	2+51	796+26	5+03	798+81	253
FAU 8136	C	NB I-55	3+04	181+93	5+32	179+65	228



LEGEND

- ① EX STABILIZED SUB-BASE
- ② EX CRC PAVEMENT
- ③ EX PCC PAVEMENT
- ④ EX HMA SHOULDER
- ⑤ EX HMA SURFACE
- ⑥ PR HMA SURFACE REMOVAL 1-1/2"
- ⑦ PR HMA SURFACE COURSE 1-1/2"

* MATCH EX SLOPE

SECTION A-A

RAMP 1 & 3, IL 16
 RAMP A & C, IL 138
 RAMP A & C, FAU 8136

MODEL: EXIT (Sheet)
 FILE NAME: c:\p\work\pwr\isef\ercal\094628\672D00-shr-details.dgn

USER NAME = Christopher.Siefert	DESIGNED -	REVISED -
	DRAWN -	REVISED -
	CHECKED -	REVISED -
PLOT DATE = 10/16/2024	DATE -	REVISED -

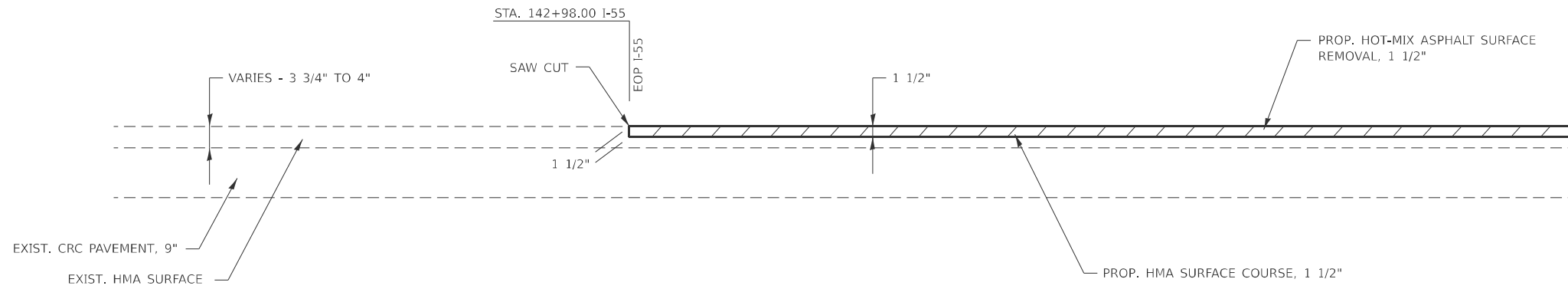
STATE OF ILLINOIS
 DEPARTMENT OF TRANSPORTATION

TYPICAL RAMP EXIT TERMINAL

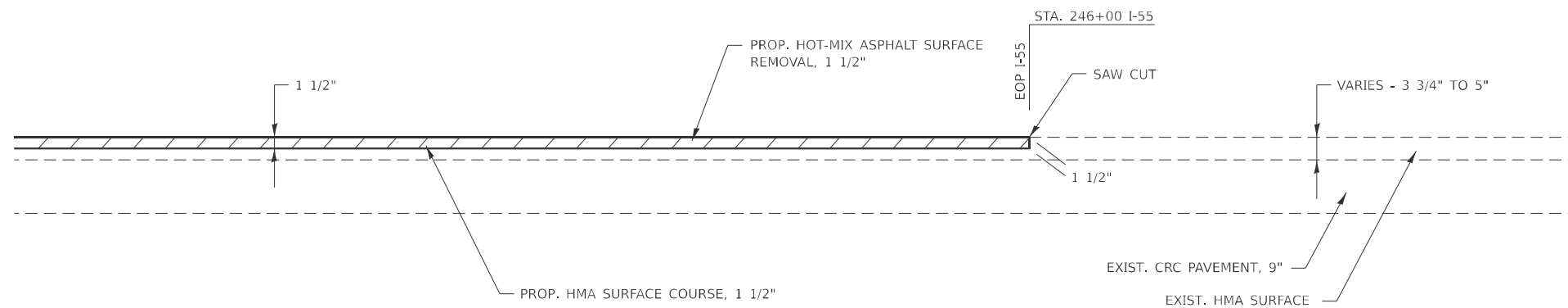
SCALE: SHEET 2 OF 7 SHEETS STA. TO STA.

F.A.P. RTE.	SECTION	COUNTY	TOTAL SHEETS	SHEET NO.
55	(59-1.2,68-1)RS-4	*	42	37
CONTRACT NO. 72D00				
ILLINOIS FED. AID PROJECT				

* MONTGOMERY & MACOUPIN



DETAIL NB/SB I-55 PVT. BEGINNING OF RESURFACING



DETAIL NB/SB I-55 PVT. END OF RESURFACING

MODEL: HMA Ramp (Sheet)
FILE NAME: c:\p\work\wis\stef\cal\094628\I672D00-shr-details.dgn

USER NAME = Christopher.Siefert	DESIGNED -	REVISED -
	DRAWN -	REVISED -
	CHECKED -	REVISED -
PLOT DATE = 10/16/2024	DATE -	REVISED -

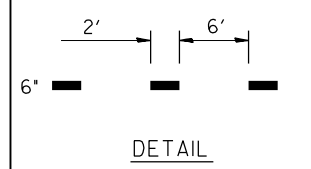
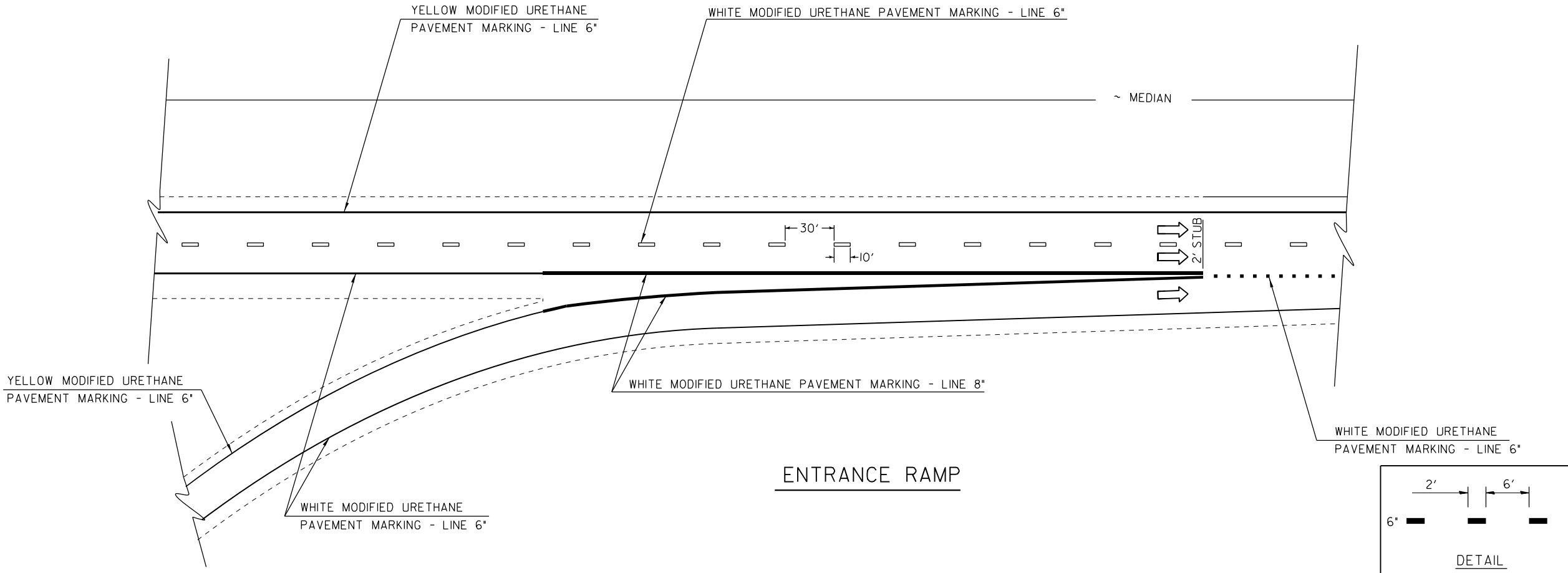
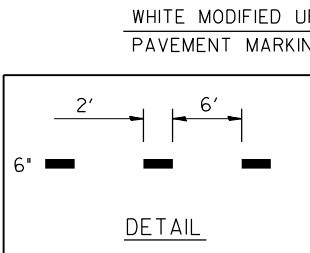
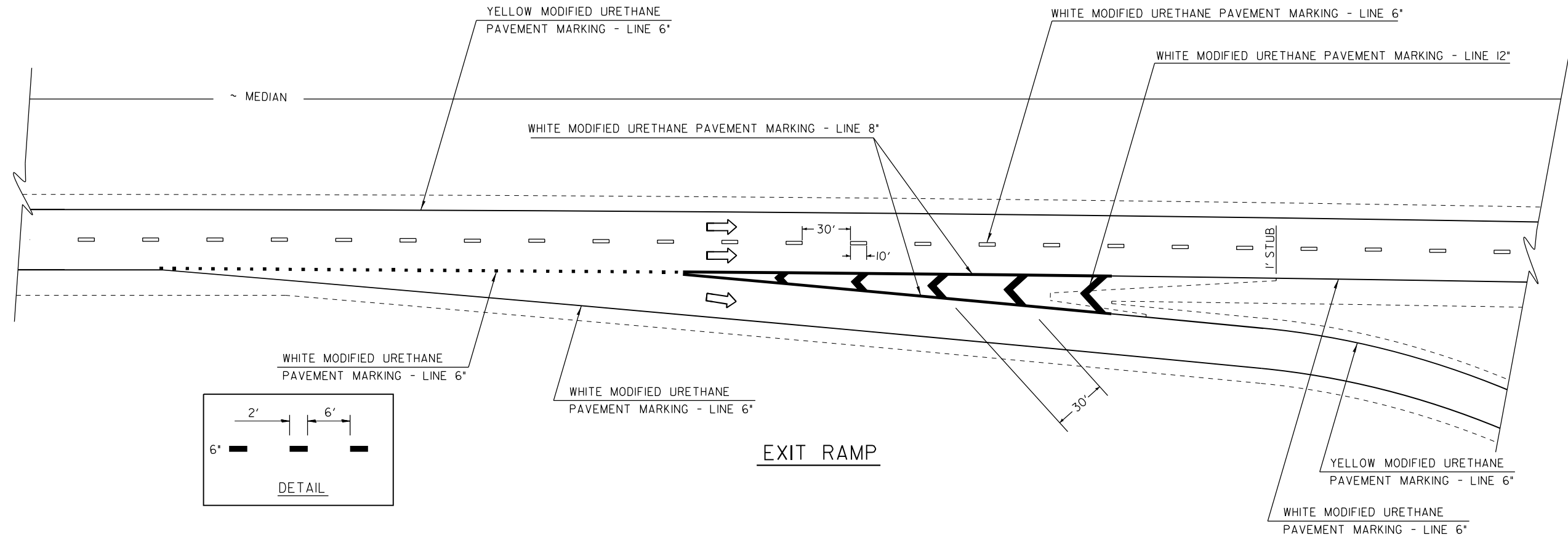
**STATE OF ILLINOIS
DEPARTMENT OF TRANSPORTATION**

HMA RAMP DETAILS

SCALE: SHEET 3 OF 7 SHEETS STA. TO STA.

F.A.P. RTE.	SECTION	COUNTY	TOTAL SHEETS	SHEET NO.
55	(59-1,2,68-1)RS-4	*	42	38
CONTRACT NO. 72D00				

ILLINOIS FED. AID PROJECT
* MONTGOMERY & MACOUPIN



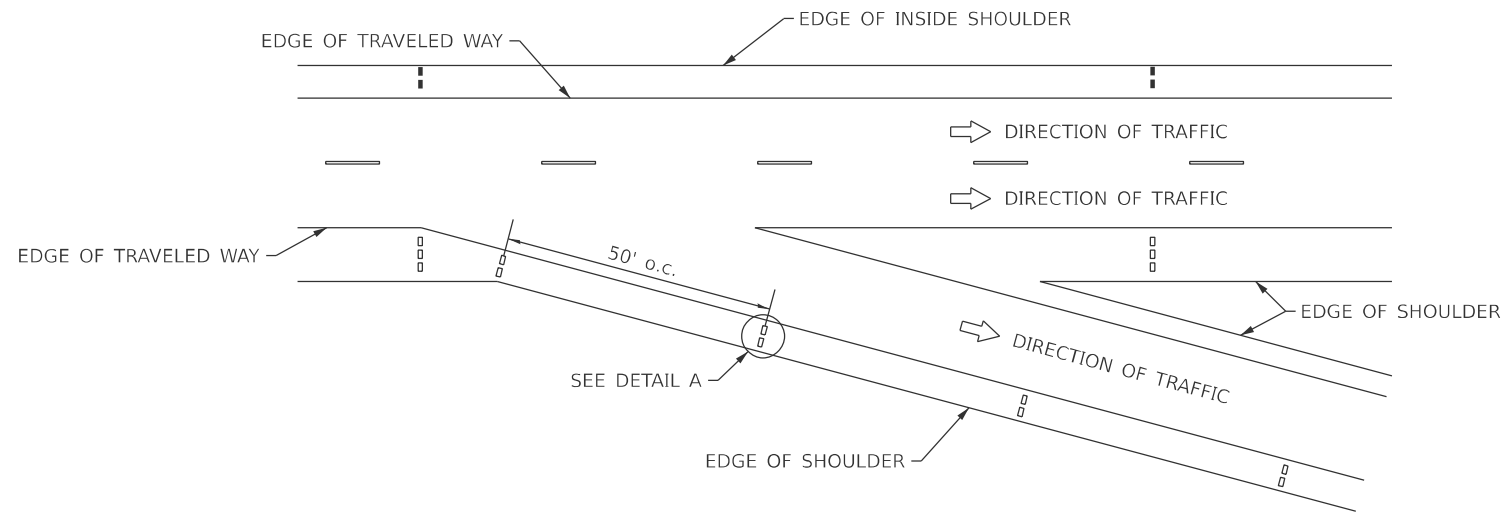
MODEL: PVT MKG RAMP (Sheet)
 FILE NAME: c:\p\work\pvt\mkg_ramp\pvt\mkg_ramp_details.dgn

USER NAME = Christopher.Siefert	DESIGNED -	REVISED -
	DRAWN -	REVISED -
	CHECKED -	REVISED -
PLOT DATE = 10/16/2024	DATE -	REVISED -

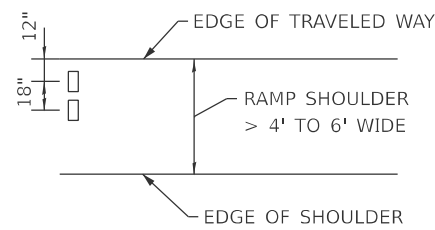
STATE OF ILLINOIS
DEPARTMENT OF TRANSPORTATION

TYPICAL PAVEMENT MARKING DETAILS			
SCALE:	SHEET 4	OF 7 SHEETS	STA. TO STA.

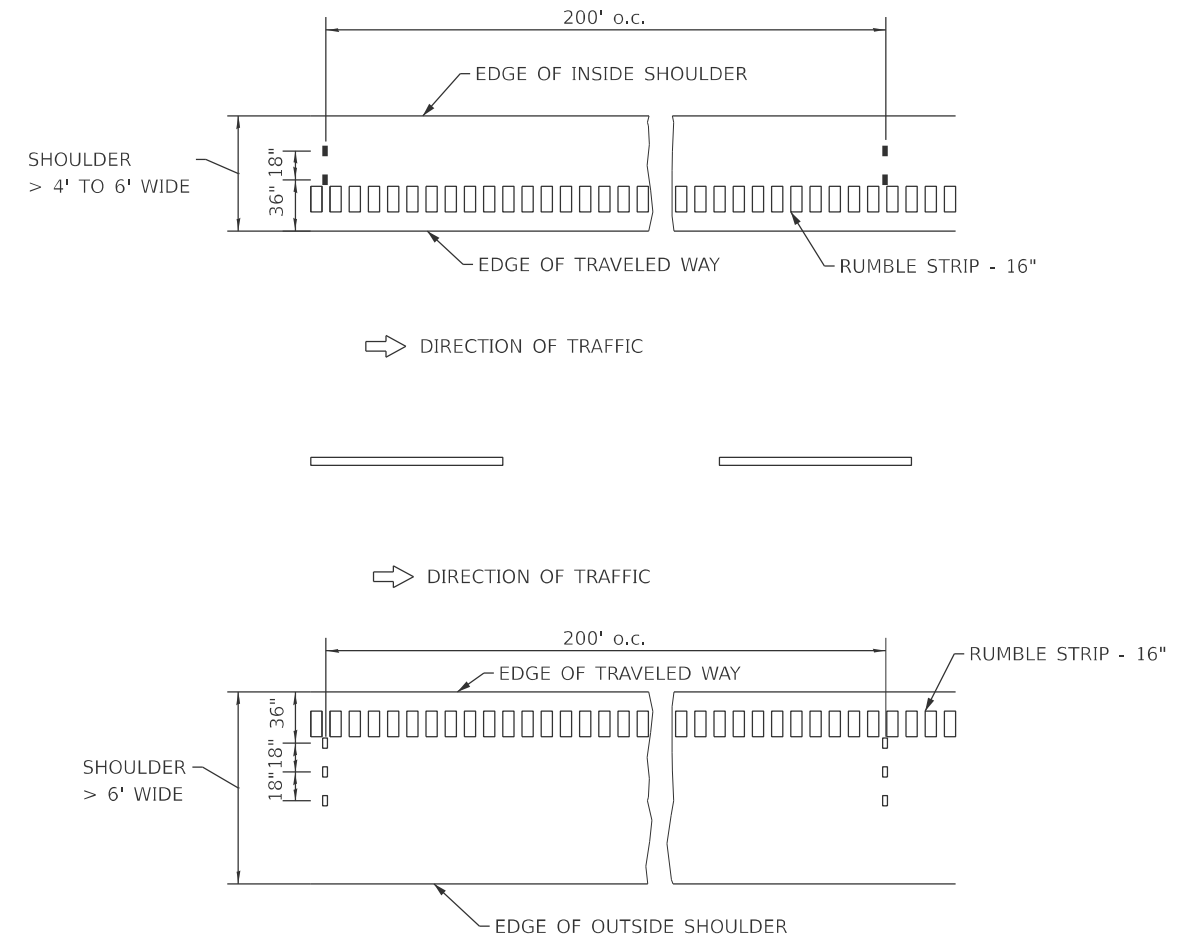
F.A.P. RTE.	SECTION	COUNTY	TOTAL SHEETS	SHEET NO.
55	(59-1.2,68-1)RS-4	*	42	39
CONTRACT NO. 72D00				
ILLINOIS FED. AID PROJECT				
* MONTGOMERY & MACOUPIN				



FREEWAY EXIT/ENTRANCE RAMP

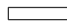




DETAIL A



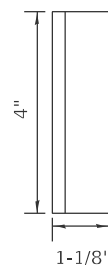
MULTI-LANE DIVIDED

SYMBOLS

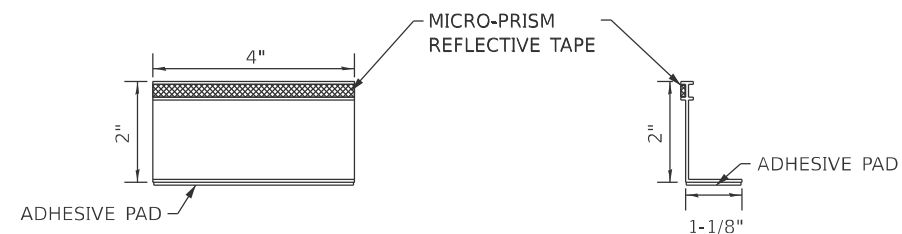
-  White stripe
-  One-way amber marker
-  One-way crystal marker

GENERAL NOTES

- TEMPORARY RAISED PAVEMENT MARKERS SHALL BE INSTALLED PRIOR TO THE APPLICATION OF ANY SURFACE TREATMENT WHICH WOULD COVER EXISTING PAVEMENT MARKINGS.
- ALL TEMPORARY RAISED PAVEMENT MARKERS SHALL BE REMOVED BY THE CONTRACTOR AFTER INSTALLATION OF PERMANENT PAVEMENT MARKINGS.



PLAN



ELEVATION

SIDE

TEMPORARY RAISED PAVEMENT MARKER DETAIL

**STATE OF ILLINOIS
DEPARTMENT OF TRANSPORTATION**

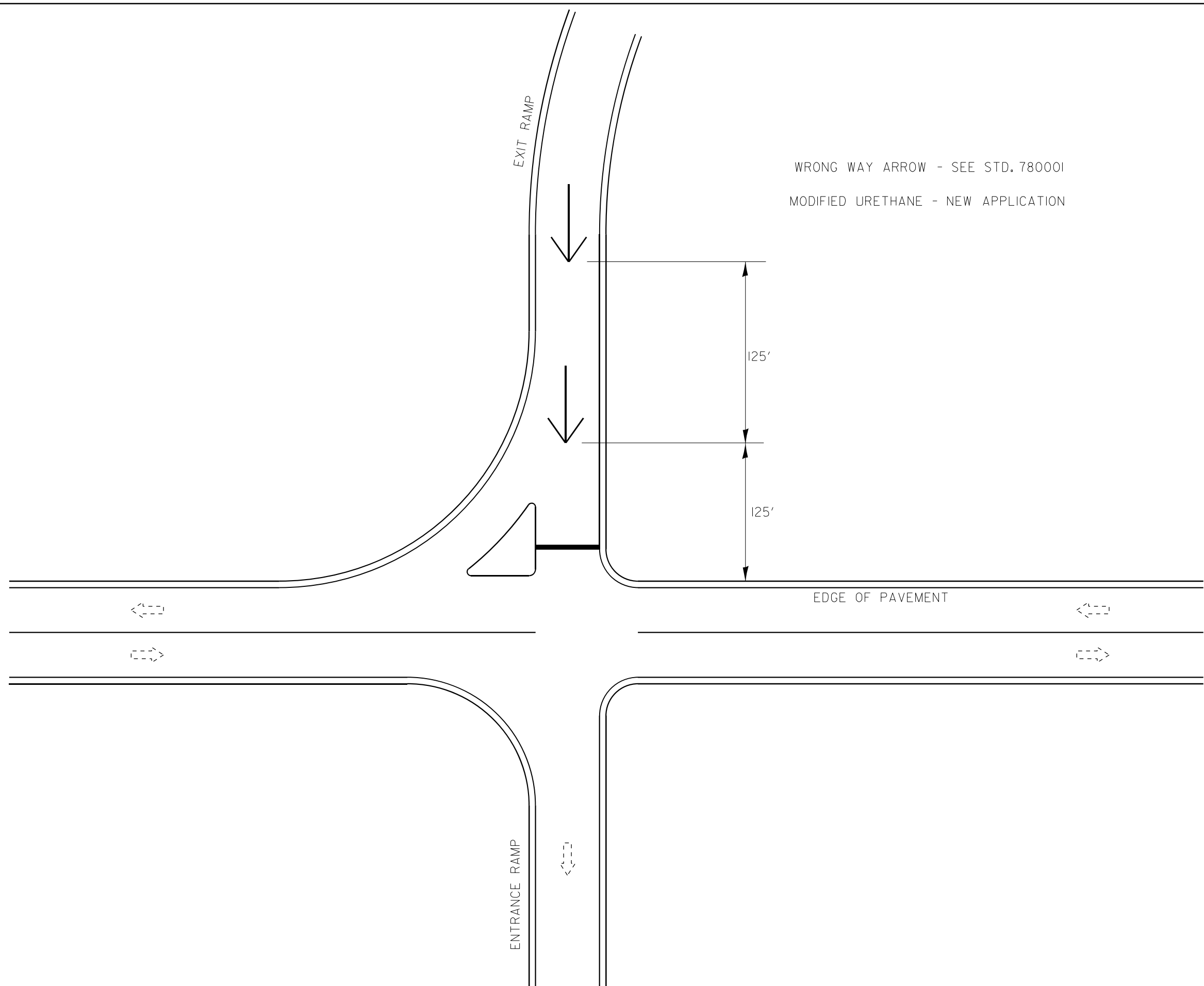
**TYPICAL APPLICATION
TEMPORARY RAISED PAVEMENT MARKER**

SCALE: SHEET 5 OF 7 SHEETS STA. TO STA.

F.A.I. RTE.	SECTION	COUNTY	TOTAL SHEETS	SHEET NO.
55	(59-1.2,68-1)RS-4	*	42	40
CONTRACT NO. 72D00				

ILLINOIS FED. AID PROJECT
* MONTGOMERY & MACOUPIN

MODEL: Pavement Marking-1 [Sheet]
 FILE NAME: c:\p\work\pav\0156\src\cal\0946028\0672D00-shit-details.dgn



USER NAME = Christopher.Siefert	DESIGNED -	REVISED -
	DRAWN -	REVISED -
	CHECKED -	REVISED -
PLOT DATE = 10/16/2024	DATE -	REVISED -

**STATE OF ILLINOIS
 DEPARTMENT OF TRANSPORTATION**

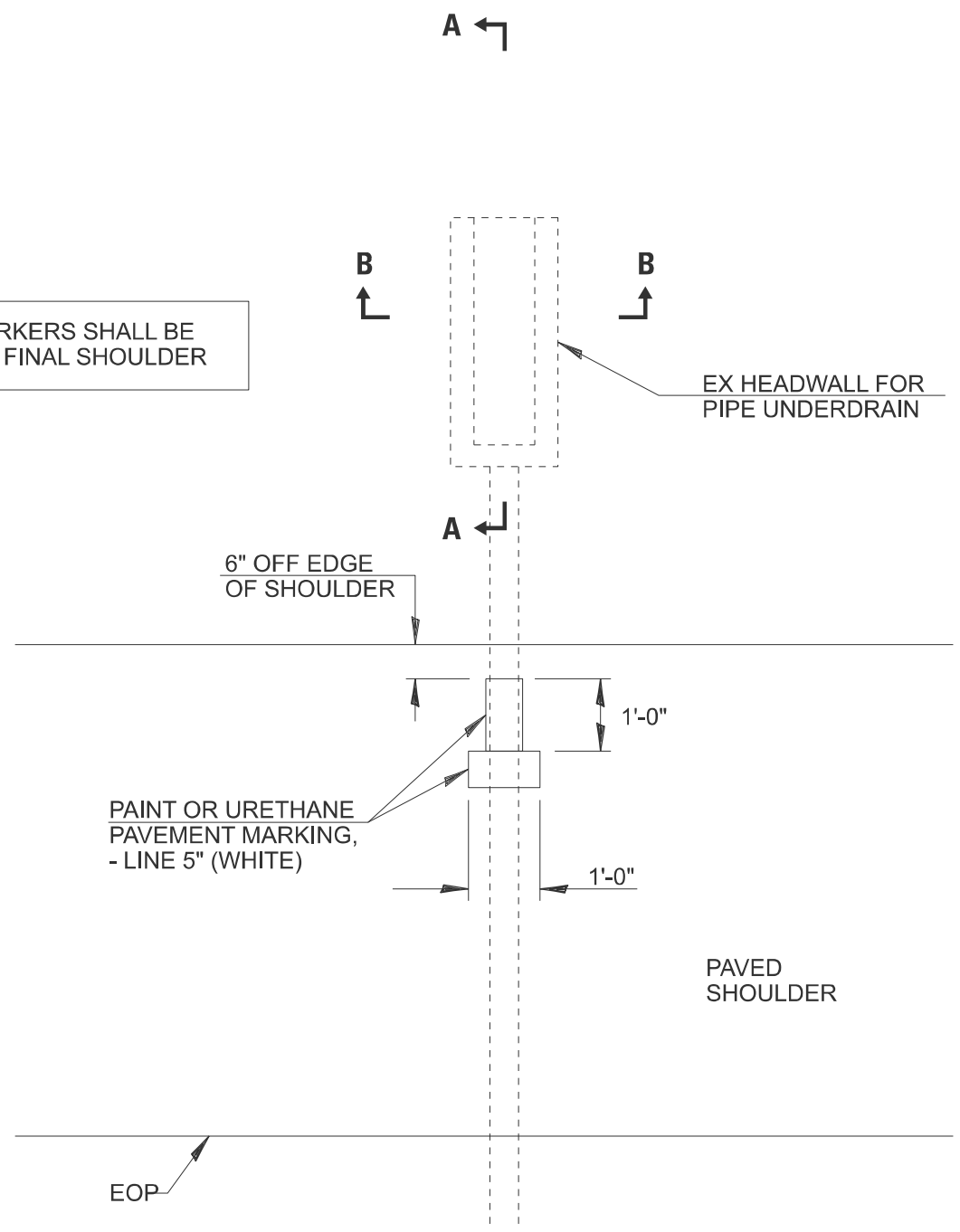
TYPICAL PAVEMENT MARKING DETAILS

SCALE: SHEET 6 OF 7 SHEETS STA. TO STA.

F.A.I. RTE.	SECTION	COUNTY	TOTAL SHEETS	SHEET NO.
55	(59-1,268-1)RS-4	*	42	41
CONTRACT NO. 72D00				
ILLINOIS FED. AID PROJECT				

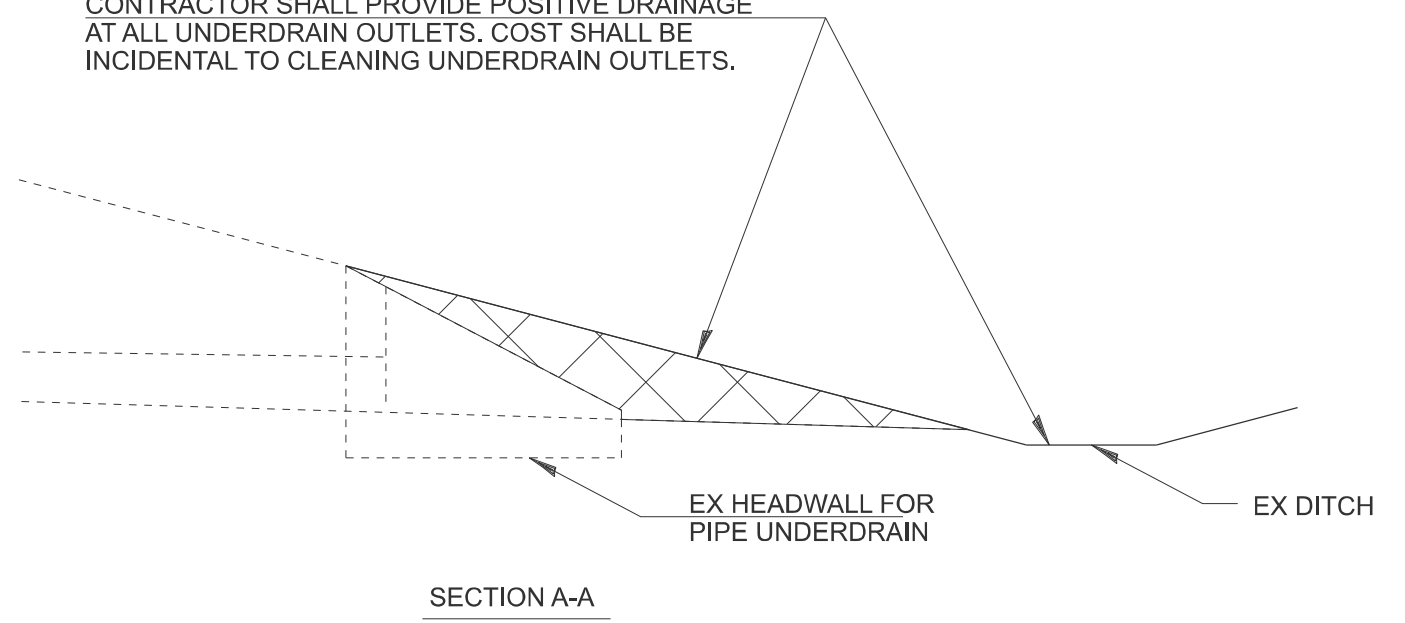
* MONTGOMERY & MACOUPIN

OUTLET MARKERS SHALL BE PLACED ON FINAL SHOULDER

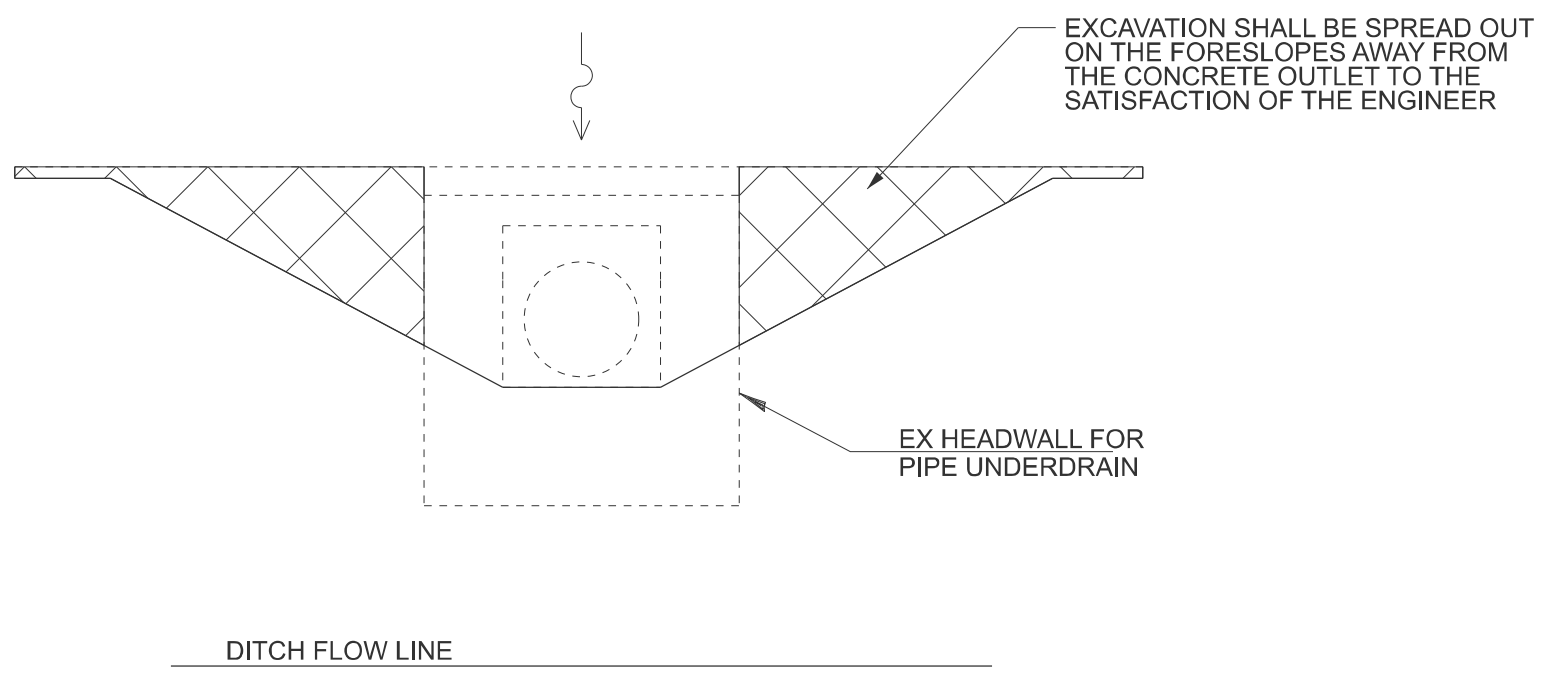


TYPICAL PIPE UNDERDRAIN MARKER DETAIL

CONTRACTOR SHALL PROVIDE POSITIVE DRAINAGE AT ALL UNDERDRAIN OUTLETS. COST SHALL BE INCIDENTAL TO CLEANING UNDERDRAIN OUTLETS.



SECTION A-A



SECTION B-B

MODEL: Outlet Marker (Sheet)
FILE NAME: c:\p\work\pav\dist\se\ercal\094628\ID672D00-shh-details.dgn

USER NAME = Christopher.Siefert	DESIGNED -	REVISED -
	DRAWN -	REVISED -
	CHECKED -	REVISED -
PLOT DATE = 10/16/2024	DATE -	REVISED -

STATE OF ILLINOIS
DEPARTMENT OF TRANSPORTATION

PIPE UNDERDRAIN MARKER & OUTLET CLEANING

SCALE: SHEET 7 OF 7 SHEETS STA. TO STA.

F.A.I. RTE.	SECTION	COUNTY	TOTAL SHEETS	SHEET NO.
55	(59-1,2,68-1)RS-4	*	42	42
CONTRACT NO. 72D00				

ILLINOIS FED. AID PROJECT
* MONTGOMERY & MACOUPIN