

STATE OF ILLINOIS
DEPARTMENT OF TRANSPORTATION

F.A.I. RTE.	SECTION	COUNTY	TOTAL SHEETS	SHEET NO.
72/172	D6 PATCHING 2025-3	ADAMS/PIKE	6	1
		ILLINOIS	CONTRACT NO. 72934	

FOR INDEX OF SHEETS, SEE SHEET NO. 2

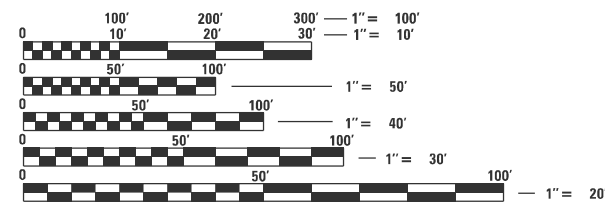
**PROPOSED
HIGHWAY PLANS**

FAI ROUTE I 72, 172 (I 72, I 172, IL 110)
SECTION D6 PATCHING 2025-3

PAVEMENT PATCHING
ADAMS/PIKE COUNTY

C-96-042-25

ADT = 7,600
SU = 250
MU = 1,550

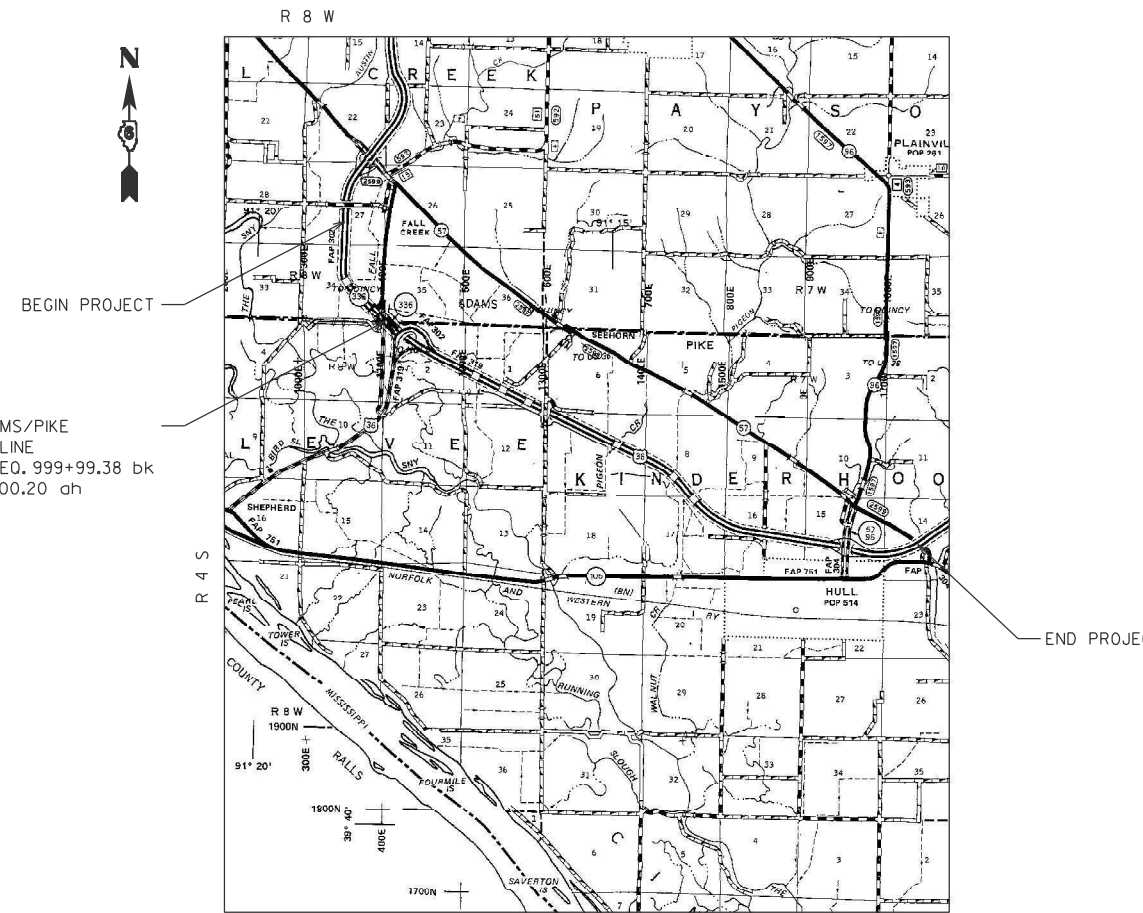


FULL SIZE PLANS HAVE BEEN PREPARED USING STANDARD ENGINEERING SCALES, REDUCED SIZED PLANS WILL NOT CONFORM TO STANDARD SCALES. IN MAKING MEASUREMENTS ON REDUCED PLANS, THE ABOVE SCALES MAY BE USED.

J.U.L.I.E.
JOINT UTILITY LOCATION INFORMATION FOR EXCAVATORS
1-800-892-0123
OR 811

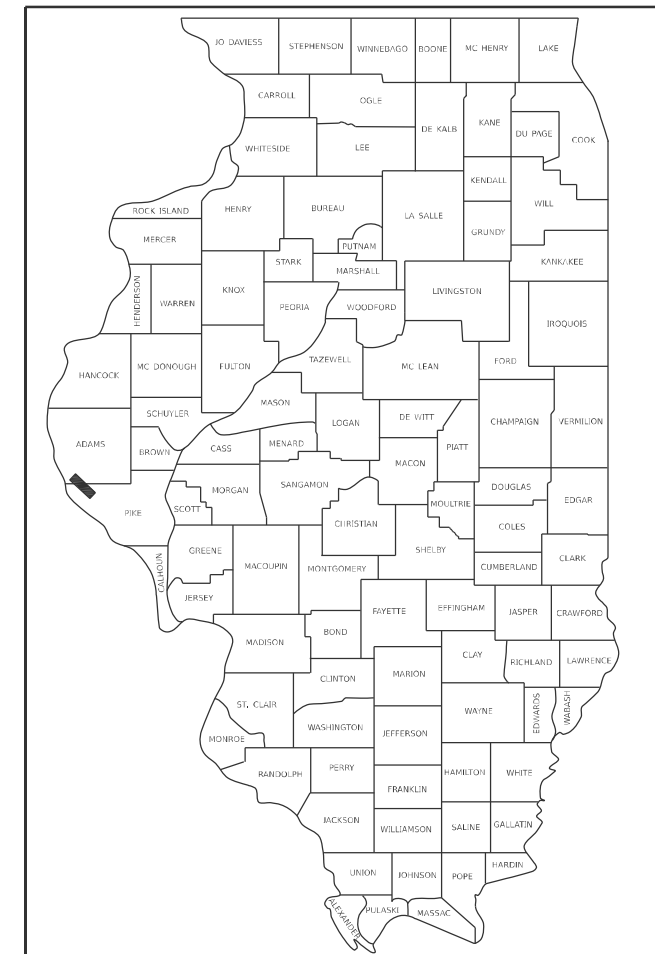
PROJECT ENGINEER: MIKE HAMBY (217)524-7765
PROJECT MANAGER TIM SHARP (217)524-9160

CONTRACT NO. 72934



GROSS LENGTH = 46,411.20 FT. = 8.790 MILE
NET LENGTH = 46,411.20 FT. = 8.790 MILE

D96-017-25



LOCATION OF SECTION INDICATED THIS: - [black rectangle] -

STATE OF ILLINOIS
DEPARTMENT OF TRANSPORTATION

SUBMITTED October 21 2024

[Signature]
REGIONAL ENGINEER

December 6, 2024

[Signature]
ENGINEER OF DESIGN AND ENVIRONMENT

December 6, 2024

[Signature]
DIRECTOR OF HIGHWAYS PROJECT IMPLEMENTATION


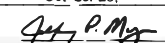
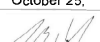
PRINTED BY THE AUTHORITY
OF THE STATE OF ILLINOIS

INDEX OF SHEETS

SHEET NO.	DESCRIPTION
1.	COVER SHEET
2.	INDEX OF SHEETS, STANDARDS, GENERAL NOTES & SIGNATURE
3.	SUMMARY OF QUANTITIES
4.	PATCHING SCHEDULE
5.	PROJECT LOCATION MAP
6.	PROJECT TYPICAL SECTIONS

STANDARDS

STANDARD NO.	DESCRIPTION
442001-04	CLASS A PATCHES
701101-05	OFF-RD OPERATIONS, MULTILANE, 15' TO 24" FROM EDGE OF PAVEMENT
701106-02	OFF-RD OPERATIONS, MULTILANE, MORE THAN 15" AWAY
701400-12	APPROACH TO LANE CLOSURE, FREEWAY/EXPRESSWAY
701401-13	LANE CLOSURE, FREEWAY/EXPRESSWAY
701411-09	LANE CLOSURE, MULTILANE AT ENTRANCE OR EXIT RAMP FOR SPEEDS \geq 45 MPH
701456-05	PARTIAL EXIT RAMP CLOSURE FREEWAY/EXPRESSWAY
701901-10	TRAFFIC CONTROL DEVICES
000001-08	STANDARD SYMBOLS, ABBREVIATIONS AND PATTERNS
001006	DECIMAL OF AN INCH AND OF A FOOT
420001-10	PAVEMENT JOINTS

STATE OF ILLINOIS DEPARTMENT OF TRANSPORTATION DIVISION OF HIGHWAYS DISTRICT 6	
EXAMINED	October 25, 20 24
 ENGINEER OF OPERATIONS	
EXAMINED	October 25, 20 24
 ENGINEER OF PROJECT IMPLEMENTATION	
EXAMINED	October 25, 20 24
 ENGINEER OF PROGRAM DEVELOPMENT	

REV - MS

FILE NAME =	USER NAME = Timothy.Sharp	DESIGNED -	REVISED -	STATE OF ILLINOIS DEPARTMENT OF TRANSPORTATION	INDEX OF SHEETS, STANDARDS GENERAL NOTES, SIGNATURES	F.A.I. RTE.	SECTION	COUNTY	TOTAL SHEETS	SHEET NO.	
pw://idot-pw.bentley.com/PWIDOT/Document/IDOT Offices/District 6/ORD Projects/D67233/Drawings/CADsheds/MS2934-sht-2-gennotes	DRAWN BY	CHECKED -	REVISED -			72/172	D6 PATCHING 2022-3	ADAMS/PKE	6	2	
Default	PLOT SCALE = #SCALE#	DATE	REVISED -			SCALE: SHEET OF SHEETS STA. TO STA.		CONTRACT NO. 72205			
	PLOT DATE = 10/23/2024	DATE	REVISED -			ILLINOIS FED. AID PROJECT					

CODE NO.	ITEM	UNIT	TOTAL QUANTITY	0-02179-6026	0-02179-6026
				100% STATE	100% STATE
				ADAMS ROADWAY	PIKE ROADWAY
				0006 RURAL	0006 RURAL
44200537	CLASS A PATCHES, TYPE I, 9 INCH	SQ YD	152	4	148
44200541	CLASS A PATCHES, TYPE II, 9 INCH	SQ YD	471	13	458
44200545	CLASS A PATCHES, TYPE III, 9 INCH	SQ YD	96	0	96
44200547	CLASS A PATCHES, TYPE IV, 9 INCH	SQ YD	104	0	104
44213000	PATCHING REINFORCEMENT	SQ YD	823	17	806
44213200	SAW CUTS	FOOT	5160	124	5,036
44213204	TIE BARS 3/4"	EACH	42	0	42
67100100	MOBILIZATION	L SUM	1	0.1	0.9
70100420	TRAFFIC CONTROL AND PROTECTION, STANDARD 701411	EACH	8	0	8
70100800	TRAFFIC OCONTROL AND PROTECTION, STANDARD 701401	L SUM	1	0.1	0.9
70100825	TRAFFIC OCONTROL AND PROTECTION, STANDARD 701456	L SUM	1	0.1	0.9
70107025	CHANGEABLE MESSAGE SIGN	CAL DAY	30	1	29

MODEL: Default
 FILE NAME: pw //isd-rw-bentley.com/pw/ISDOT/Document3/DOOT_0_cas/District_6/OND_Projects/0672934/CAUDData/CAUDSheet72934-epi-3-500.dgn

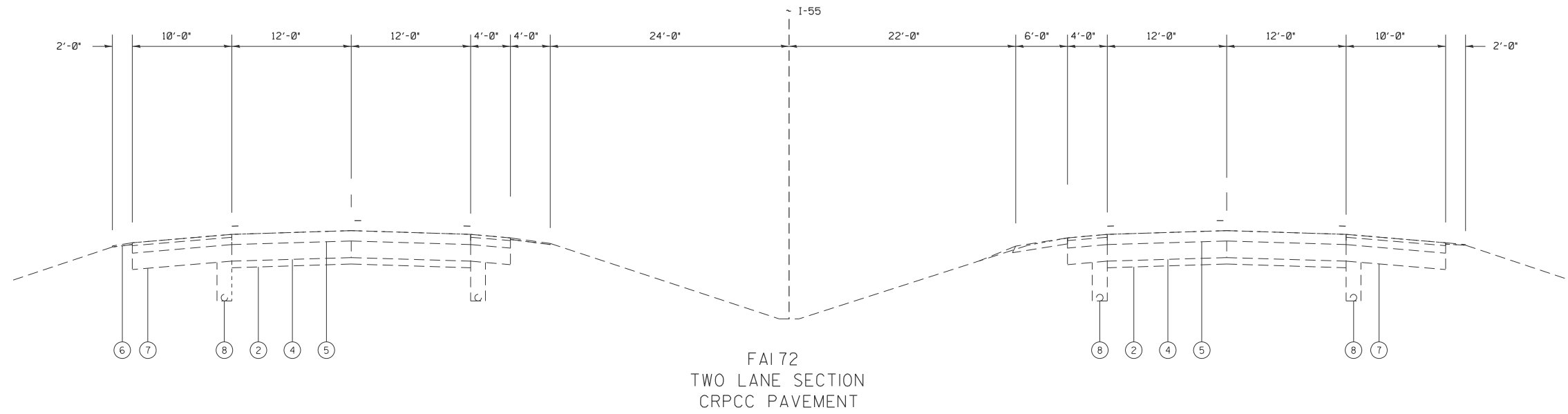
USER NAME = Timothy.Sharp	DESIGNED -	REVISED -
PLOT SCALE = \$SCALE\$	DRAWN -	REVISED -
PLOT DATE = 10/4/2024	CHECKED -	REVISED -
	DATE -	REVISED -

**STATE OF ILLINOIS
DEPARTMENT OF TRANSPORTATION**

SUMMARY OF QUANTITIES

SCALE: SHEET OF SHEETS STA. TO STA.

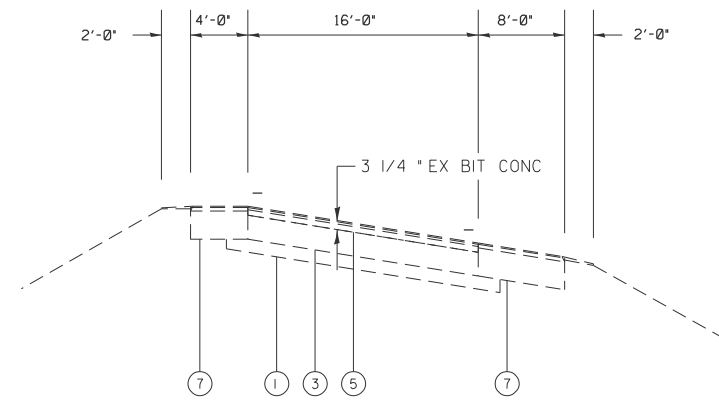
F.A.I. RTE.	SECTION	COUNTY	TOTAL SHEETS	SHEET NO.
72/172	D6 PATCHING 2025-3	ADAMS/PIKE	6	3
CONTRACT NO. 72934				
ILLINOIS FED. AID PROJECT				



FAI 72
TWO LANE SECTION
CRPCC PAVEMENT

LEGEND

- ① EX STABILIZED SUB-BASE 4'
- ② EX AGGREGATE SUB-BASE 4'
- ③ EX PCC PAVEMENT 10'
- ④ EX CRPCC PAVEMENT
- ⑤ EX HOT -MIX ASPHALT SURFACE COURSE (VARIABLE THICKNESS)
- ⑥ EX AGGREGAE SHOULDERS
- ⑦ EX HOT-MIX ASPHALT SHOULDERS
- ⑧ EX PIPE UNDERDRAIN



RAMPS
PCC PAVEMENT

MODEL: Default
 FILE NAME: p:\illicit-pw-beach\com\p\INDOT\Documents\DOT 0_csr\District 6\ORRD Projects\672934\CADD\Drawings\CAD\Sheets\72934\chr-6-hyp\sta.f.dgn

USER NAME = Timothy,Sharp	DESIGNED -	REVISED -
	DRAWN -	REVISED -
PLOT SCALE = \$SCALE\$	CHECKED -	REVISED -
PLOT DATE = 10/22/2024	DATE -	REVISED -

STATE OF ILLINOIS
DEPARTMENT OF TRANSPORTATION

TYPICALS	
SCALE:	SHEET OF SHEETS STA. TO STA.

F.A.I. RTE.	SECTION	COUNTY	TOTAL SHEETS	SHEET NO.
72/172	D6 PATCHING 2025-3	ADAMS/PIKE	6	6
CONTRACT NO. 72934				
ILLINOIS FED. AID PROJECT				