

MUN. RTE.	SECTION	COUNTY	TOTAL SHEETS	SHEET NO.
1197	22-00059-00-RS	LAKE	25	1
FED. ROAD DIST. NO.	ILLINOIS CONTRACT NO. 61K91			

FOR INDEX OF SHEETS, SEE SHEET NO. 2

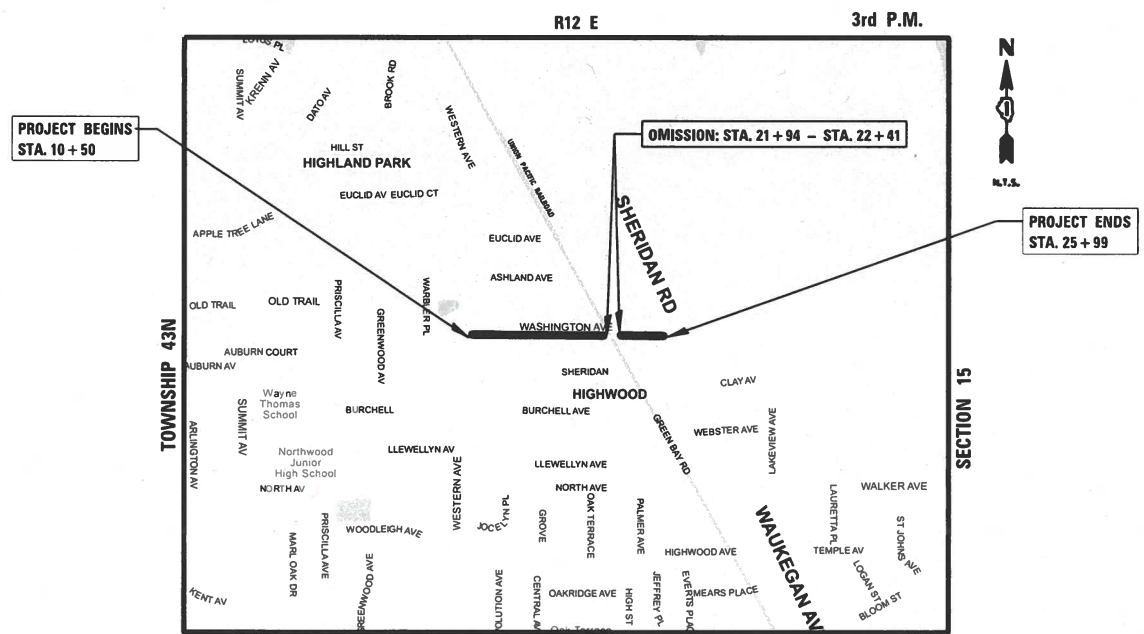
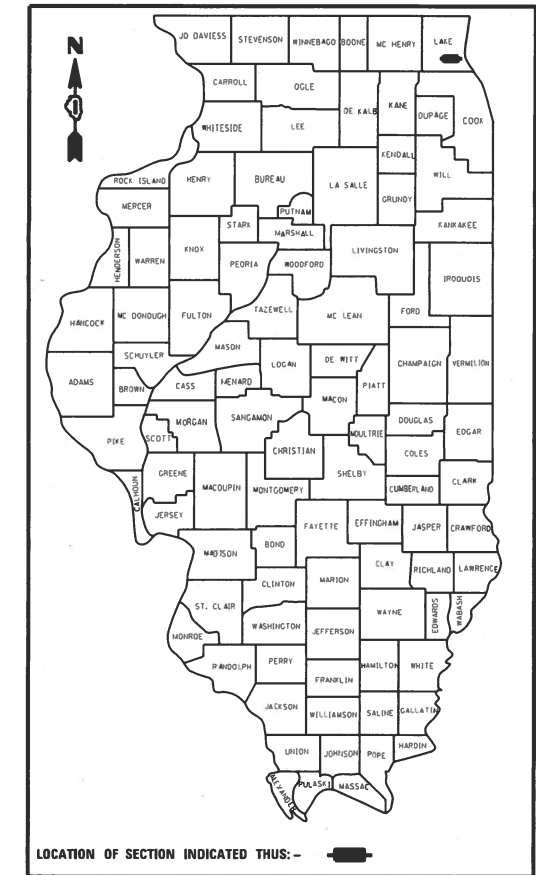
01-17-2025 LETTING ITEM 090

STATE OF ILLINOIS DEPARTMENT OF TRANSPORTATION PLANS FOR PROPOSED FEDERAL AID HIGHWAY

FAU 1197 WASHINGTON AVENUE
SHERIDAN RD. TO WESTERN AVE.
SECTION NO. 22-00059-00-RS
PROJECT NO. NX46(910)
CITY OF HIGHWOOD
LAKE COUNTY
JOB NO. C-91-139-22

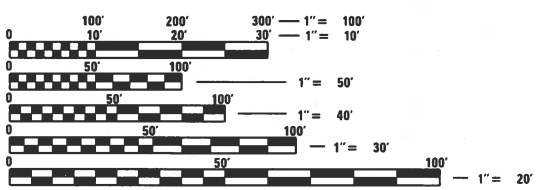
TRAFFIC DATA
WASHINGTON AVE.
ADT = 2250 (2023)
POSTED SPEED LIMIT = 25 MPH

WASHINGTON AVE. DESIGN DESIGNATION:
MAJOR COLLECTOR



LOCATION MAP

WASHINGTON AVE
GROSS LENGTH OF PROJECT = 1,549.015 FEET (0.29 MILES)
NET LENGTH OF PROJECT = 1,502.501 FEET (0.28 MILES)



FULL SIZE PLANS HAVE BEEN PREPARED USING STANDARD ENGINEERING SCALES. REDUCED SIZED PLANS WILL NOT CONFORM TO STANDARD SCALES. IN MAKING MEASUREMENTS ON REDUCED PLANS, THE ABOVE SCALES MAY BE USED.

J.U.L.I.E.
JOINT UTILITY LOCATION INFORMATION FOR EXCAVATION
8-1-1 OR 1-800-892-0123

CB CHRISTOPHER B. BURKE ENGINEERING LTD.
9575 West Higgins Road, Suite 600
Rosemont, Illinois 60018 (847) 823-0500

PROFESSIONAL DESIGN FIRM NO. 184-001175
EXPIRATION DATE: 04/30/25

CONTRACT NO. 61K91

Lee M. Fell
10/7/24
DATE
ENGINEER
LEE M. FELL
ILLINOIS REGISTRATION No. 062-053708
EXPIRATION DATE: 11/30/2025

STATE OF ILLINOIS
DEPARTMENT OF TRANSPORTATION

APPROVED *September 23, 2024*
[Signature]
CITY MANAGER
CITY OF HIGHWOOD

PASSED *Nov. 6, 2024*
[Signature]
DISTRICT 1 ENGINEER OF LOCAL ROADS AND STREETS

RELEASING FOR
BID BASED ON
LIMITED REVIEW *Nov 6, 2024*
[Signature]
REGIONAL ENGINEER

**PRINTED BY THE AUTHORITY
OF THE STATE OF ILLINOIS**

FEDERAL AID PROGRAM ENGINEER: CARMEN E. RAMOS, PE, SCHAUMBURG, IL

INDEX OF SHEETS

SHEET NO.	DESCRIPTION
1	COVER SHEET
2	GENERAL NOTES AND HIGHWAY STANDARDS
3-6	SUMMARY OF QUANTITIES
7	TYPICAL SECTIONS
8-10	WASHINGTON AVE. EXISTING CONDITIONS AND REMOVAL PLAN
11-13	WASHINGTON AVE. PROPOSED PLAN
14-16	PAVEMENT MARKING PLAN
17	CONSTRUCTION DETAILS
18	FRAMES AND LIDS ADJUSTMENT WITH MILLING (BD-8)
19	PAVEMENT PATCHING FOR HMA SURFACED PAVEMENT (BD-22)
20	CURB OR CURB AND GUTTER REMOVAL AND REPLACEMENT (BD-24)
21	BUTT JOINT AND HMA TAPER DETAILS (BD-32)
22	TRAFFIC CONTROL AND PROTECTION FOR SIDE ROADS, INTERSECTIONS, AND DRIVEWAYS (TC-10)
23	DISTRICT ONE TYPICAL PAVEMENT MARKINGS (TC-13)
24	SHORT TERM PAVEMENT MARKING LETTERS AND SYMBOLS (TC-16)
25	ARTERIAL ROAD INFORMATION SIGN (TC-22)

HIGHWAY STANDARDS

000001-08	STANDARD SYMBOLS, ABBREVIATIONS, AND PATTERNS
424001-12	PERPENDICULAR CURB RAMPS FOR SIDEWALKS
424006-06	DIAGONAL CURB RAMPS FOR SIDEWALKS
424011-05	CORNER PARALLEL CURB RAMPS FOR SIDEWALKS
424016-06	MID-BLOCK CURB RAMPS FOR SIDEWALKS
424021-07	DEPRESSED CORNER FOR SIDEWALKS
606001-08	CONCRETE CURB TYPE B AND COMBINATION CONCRETE CURB AND GUTTER
701006-05	OFF ROAD OPERATIONS, 2L, 2W, 15' TO 24" FROM PAVEMENT EDGE
701301-04	LANE CLOSURE, 2L, 2W, SHORT TIME OPERATIONS
701311-03	LANE CLOSURE, 2L, 2W, MOVING OPERATIONS - DAY ONLY
701501-06	URBAN LANE CLOSURE, 2L, 2W, - UNDIVIDED
701701-10	URBAN LANE CLOSURE, MULTILANE INTERSECTION
701801-06	SIDEWALK, CORNER, OR CROSSWALK CLOSURE
701901-10	TRAFFIC CONTROL DEVICES
720001-01	SIGN PANEL MOUNTING DETAILS
720006-04	SIGN PANEL ERECTION DETAILS
720011-01	METAL POSTS FOR SIGNS, MARKERS & DELINEATORS
728001-01	TELESCOPING STEEL SIGN SUPPORT
731001-01	BASE FOR TELESCOPING STEEL SIGN SUPPORT
780001-05	TYPICAL PAVEMENT MARKINGS

DISTRICT ONE DETAILS

BD-08	FRAMES AND LIDS ADJUSTMENT WITH MILLING
BD-22	PAVEMENT PATCHING FOR HMA SURFACED PAVEMENT
BD-24	CURB OR CURB AND GUTTER REMOVAL AND REPLACEMENT
BD-32	BUTT JOINT AND HMA TAPER DETAILS
TC-10	TRAFFIC CONTROL FOR SIDE ROADS, INTERSECTIONS, AND DRIVEWAYS
TC-13	DISTRICT ONE TYPICAL PAVEMENT MARKINGS
TC-16	SHORT TERM PAVEMENT MARKING LETTERS AND SYMBOLS
TC-22	ARTERIAL ROAD INFORMATION SIGN

GENERAL NOTES

SPECIFICATIONS, STANDARDS AND SPECIAL PROVISIONS

- ALL CONSTRUCTION SHALL BE DONE IN ACCORDANCE WITH THE "STANDARD SPECIFICATIONS FOR ROAD AND BRIDGE CONSTRUCTION", ADOPTED JANUARY 1, 2022; THE "SUPPLEMENTAL SPECIFICATIONS AND RECURRING SPECIAL PROVISIONS", ADOPTED JANUARY 1, 2025; THE LATEST EDITION OF THE "ILLINOIS MANUAL ON UNIFORM TRAFFIC CONTROL DEVICES FOR STREETS AND HIGHWAYS", (IMUTCD); "THE STANDARD SPECIFICATIONS FOR WATER AND SEWER MAIN CONSTRUCTION IN ILLINOIS", EIGHTH EDITION, THE "DETAILS" IN THE PLANS AND THE "SPECIAL PROVISIONS" INCLUDED IN THE CONTRACT DOCUMENTS.
- ANY REFERENCE TO STANDARDS THROUGHOUT THE PLANS SHALL BE INTERPRETED AS THE LATEST IDOT HIGHWAY STANDARD.
- CODES OF THE IEPA TITLE 35, AND O.S.H.A. SHALL BE ADHERED TO FOR THE CONSTRUCTION OF THIS PROJECT.
- ALL TRAFFIC CONTROL AND OTHER ADVISORY SIGNS NEEDED FOR CONSTRUCTION ARE TO BE FURNISHED BY THE CONTRACTOR IN ACCORDANCE WITH SECTION 700 OF THE STANDARD SPECIFICATIONS.

UTILITIES

- THE CONTRACTOR SHALL BE RESPONSIBLE FOR CONTACTING THE OWNERS OF ALL EXISTING UTILITY FACILITIES SO THAT THE UTILITIES AND THEIR APPURTENANCES MAY BE LOCATED AND ADJUSTED OR MOVED, IF NECESSARY, PRIOR TO THE START OF CONSTRUCTION OPERATIONS. THE CONTRACTOR SHALL COOPERATE WITH ALL UTILITY OWNERS AS PROVIDED FOR IN THE STANDARD SPECIFICATIONS.
- THE LOCATIONS OF EXISTING DRAINAGE STRUCTURES, STORM AND SANITARY SEWERS, WATER SERVICE LINES AND OTHER UTILITY LINES ARE APPROXIMATE, AND THE CITY DOES NOT GUARANTEE THEIR ACCURACY. THEIR EXACT HORIZONTAL AND VERTICAL LOCATIONS ARE TO BE DETERMINED IN THE FIELD BY THE CONTRACTOR.
- THE CONTRACTOR SHALL BE RESPONSIBLE FOR THE PROTECTION OF ALL UNDERGROUND OR SURFACE UTILITIES EVEN THOUGH THEY MAY NOT BE SHOWN ON THE PLANS. ANY UTILITY THAT IS DAMAGED DURING CONSTRUCTION SHALL BE REPAIRED OR REPLACED TO THE SATISFACTION OF THE ENGINEER.
- BEFORE STARTING ANY EXCAVATION, THE CONTRACTOR SHALL CALL "JULIE" AT 8-1-1 FOR FIELD LOCATIONS OF BURIED ELECTRIC, TELEPHONE, GAS AND CABLE.

WATER, STORM SEWER AND SANITARY SEWER

- WHENEVER DURING CONSTRUCTION OPERATIONS ANY LOOSE MATERIAL IS DEPOSITED IN THE FLOW LINE OF DRAINAGE STRUCTURES SUCH THAT THE NATURAL FLOW OF WATER IS OBSTRUCTED, IT SHALL BE REMOVED AT THE CLOSE OF EACH WORKING DAY. AT THE CONCLUSION OF CONSTRUCTION OPERATIONS, ALL UTILITY STRUCTURES SHALL BE FREE FROM DIRT AND DEBRIS.
- THE CONTRACTOR SHALL NOT OPEN OR SHUT ANY WATER VALVES OR FIRE HYDRANTS. CONTACT THE CITY OF HIGHWOOD (TEL. 847-432-1924) FOR THEM TO TURN VALVES OR OPERATE HYDRANTS. ANY UNAUTHORIZED USE OF THIS EQUIPMENT THE OFFENDER WILL BE SUBJECT TO ARREST AND PROSECUTION.

MISCELLANEOUS

- DIMENSIONS: IT SHALL BE THE CONTRACTOR'S RESPONSIBILITY TO VERIFY ALL DIMENSIONS AND CONDITIONS EXISTING IN THE FIELD PRIOR TO ORDERING MATERIALS AND BEGINNING CONSTRUCTION.
- ALL SAWCUTTING SHALL BE PERFORMED PRIOR TO BEGINNING REMOVAL.
- COMBINATION CONCRETE CURB AND GUTTER REMOVAL AND REPLACEMENT, SIDEWALK REMOVAL AND REPLACEMENT, DRIVEWAY REMOVAL AND REPLACEMENT, AND STRUCTURES TO BE ADJUSTED WILL BE DETERMINED BY THE ENGINEER IN THE FIELD.
- THE THICKNESSES OF HOT-MIX ASPHALT MIXTURES SHOWN IN THE PLANS ARE NOMINAL. DEVIATIONS MAY OCCUR DUE TO IRREGULARITIES IN THE SURFACES OR BASIS ON WHICH THEY ARE TO BE PLACED. PLAN THICKNESSES SHOULD BE CONSIDERED THE MINIMUM THICKNESS PERMITTED.
- DETECTABLE WARNINGS FOR THE HANDICAPPED SHALL BE INSTALLED AT INTERSECTING STREETS, AT THE LOCATIONS SHOWN ON THE PLANS.
- RELOCATING EXISTING SIGNS: EXISTING SIGNS WHICH ARE IN CONFLICT WITH PROPOSED IMPROVEMENTS SHALL BE REMOVED AND REINSTALLED UPON COMPLETION OF CONFLICTING IMPROVEMENTS IN ACCORDANCE WITH ARTICLE 107.25 OF THE "STANDARD SPECIFICATIONS FOR ROAD AND BRIDGE CONSTRUCTION", STOP SIGNS, SPEED LIMIT SIGNS, AND STREET NAME SIGNS SHALL BE UP AND VISIBLE AT ALL TIMES.
- FRESH OIL SIGNS SHALL BE POSTED AT BOTH ENDS OF THE ROADWAY AND ALL SIDE STREETS AS DIRECTED BY THE ENGINEER. ROAD CONSTRUCTION AHEAD SIGNS SHALL BE PLACED AT ALL SIDE STREETS AND BOTH ENDS OF THE ROADWAY WHILE CONSTRUCTION IS IN PROGRESS.
- CONTRACTOR SHALL NOT PLACE SOD UNTIL THE TEMPERATURE IS 80° OR LESS AND THE FORECAST FOR THE NEXT 7 DAYS SHOWS TEMPERATURES OF 80° OR LESS. IF ALL OTHER PAY ITEMS ARE COMPLETED, THE CONTRACTOR WILL NOT BE CHARGED WORKING DAYS FOR DELAYS IN PARKWAY RESTORATION DUE TO TEMPERATURE.
- NO CONSTRUCTION SHALL BEGIN UNTIL ALL PROPER TEMPORARY SIGNS AND BARRICADES HAVE BEEN INSTALLED.

- ALL ROADS MUST HAVE ONLY ONE LONGITUDINAL JOINT WHILE PAVING.
- VANDALISM - SPECIAL ATTENTION IS CALLED TO THE SPECIAL PROVISION FOR "INSPECTION" AS WELL AS ARTICLE 107.30 OF THE "STANDARD SPECIFICATIONS." ANY DEFACED WORK AS DETERMINED AND DIRECTED BY THE CITY SHALL BE CORRECTED OR REPLACED TO THE SATISFACTION OF THE ENGINEER. THE CITY OF HIGHWOOD WILL COOPERATE WITH THE CONTRACTOR TO MINIMIZE VANDALISM, BUT THE CONTRACTOR SHALL BE ULTIMATELY RESPONSIBLE TO CORRECT ANY DAMAGE. THE CITY WILL NOT BE RESPONSIBLE FOR THE SECURITY OF THE WORK SITE IN THIS REGARD, OTHER THAN NORMAL PATROLLING AND RESPONSE TO EMERGENCIES. SECURITY REQUIRED TO MEET THIS SPECIAL PROVISION SHALL BE INCLUDED.
- IT IS THE CONTRACTOR'S SOLE RESPONSIBILITY TO COORDINATE WITH THE UNION PACIFIC RAILROAD WHENEVER CONSTRUCTION ACTIVITY IS WITHIN 25 FEET OF THE RAILROAD ROW. THE CONTRACTOR SHALL RETAIN FLAGMEN EMPLOYED AND DESIGNATED BY THE UNION PACIFIC RAILROAD TO MONITOR ON-COMING TRAIN TRAFFIC, AND ADVISE CONTRACTOR PERSONNEL WHEN ACTIVITY ON OR NEAR THE RAILROAD RIGHT-OF-WAY MAY PROCEED. THIS ITEM WILL BE PAID FOR ACCORDING TO ARTICLE 107.12 AND WILL BE REIMBURSED ACCORDING TO ARTICLE 109.05.

FILE NAME =	USER NAME = jhouseh	DESIGNED - JEH	REVISED -	STATE OF ILLINOIS DEPARTMENT OF TRANSPORTATION	GENERAL NOTES AND HIGHWAY STANDARDS	F.A.U. RTÉ.	SECTION	COUNTY	TOTAL SHEETS	SHEET NO.	
N:\HIGHWOOD\170196\02102\Civil\NOT_170196_02102 - Washington.sht	DRAWN - JEH	REVISED -	1197			22-00059-00-R5	LAKE	25	2		
Default	PLOT SCALE = N.T.S.	CHECKED - LMF	REVISED -			CONTRACT NO. 61K91					
	PLOT DATE = 11/1/2024	DATE -	REVISED -			SCALE:	SHEET	OF	SHEETS	STA.	TO

SPECIALTY ITEM	ITEM NO.	ITEM	UNIT	CONSTRUCTION TYPE CODE 0005 (80% FEDERAL / 20% LOCAL)	NON-PARTICIPATING ITEMS (100% LOCAL)
	44201761	CLASS D PATCHES, TYPE I, 10 INCH	SQ YD	77	
	44201765	CLASS D PATCHES, TYPE II, 10 INCH	SQ YD	405	
	44201769	CLASS D PATCHES, TYPE III, 10 INCH	SQ YD	75	
	44201771	CLASS D PATCHES, TYPE IV, 10 INCH	SQ YD	75	
	60235700	INLETS, TYPE A, TYPE 3 FRAME AND GRATE	EACH	2	
	60603800	COMBINATION CONCRETE CURB AND GUTTER, TYPE B-6.12	FOOT	845	
	67100100	MOBILIZATION	LSUM	1	
	70102620	TRAFFIC CONTROL AND PROTECTION, STANDARD 701501	LSUM	1	
	70102635	TRAFFIC CONTROL AND PROTECTION, STANDARD 701701	LSUM	1	
	70102640	TRAFFIC CONTROL AND PROTECTION, STANDARD 701801	LSUM	1	
	70107025	CHANGEABLE MESSAGE SIGN	CAL DA	40	
	70300100	SHORT TERM PAVEMENT MARKING	FOOT	2,260	
	70300150	SHORT TERM PAVEMENT MARKING REMOVAL	SQ FT	800	
*	72000100	SIGN PANEL - TYPE 1	SQ FT	5	
*	72800100	TELESCOPING STEEL SIGN SUPPORT	FOOT	16	
*	72900100	METAL POST - TYPE A	FOOT	20	

* INDICATES SPECIALTY ITEM

FILE NAME =	USER NAME = jhouseh	DESIGNED - JEH	REVISED -	STATE OF ILLINOIS DEPARTMENT OF TRANSPORTATION	SUMMARY OF QUANTITIES	F.A.U. RTE.	SECTION	COUNTY	TOTAL SHEETS	SHEET NO.
N:\HIGHWAY\170196\02102\Civil\5002.1701	5.02102 - Washington.dgn	DRAWN - JEH	REVISED -			1197	22-00059-00-RS	LAKE	25	4
PLOT SCALE = N.T.S.	CHECKED - LMF	REVISED -	REVISED -			CONTRACT NO. 61K91				
Default	PLOT DATE = 10/28/2024	DATE -	REVISED -			SCALE:	SHEET 2 OF 4 SHEETS	STA.	TO STA.	ILLINOIS FED. AID PROJECT

SPECIALTY ITEM	ITEM NO.	ITEM	UNIT	CONSTRUCTION TYPE CODE 0005 (80% FEDERAL / 20% LOCAL)	NON-PARTICIPATING ITEMS (100% LOCAL)
*	78000100	THERMOPLASTIC PAVEMENT MARKING - LETTERS AND SYMBOLS	SQ FT	125	
*	78000200	THERMOPLASTIC PAVEMENT MARKING - LINE 4"	FOOT	2,090	
*	78000400	THERMOPLASTIC PAVEMENT MARKING - LINE 6"	FOOT	256	
*	78000600	THERMOPLASTIC PAVEMENT MARKING - LINE 12"	FOOT	92	
*	78000650	THERMOPLASTIC PAVEMENT MARKING - LINE 24"	FOOT	90	
	X0301339	REMOVE EXISTING PARKING BLOCKS	EACH	36	
	X0323378	CONCRETE PARKING BLOCKS	EACH	36	
	X0326862	STRUCTURES TO BE ADJUSTED	EACH	4	
	X4404700	SIDEWALK REMOVAL (SPECIAL)	SQ FT	997	
	XX009224	CLASS D PATCHES, SPECIAL	SQ YD	15	
*	X5510309	SANITARY SEWER REMOVAL AND REPLACEMENT - 8"	FOOT		40
	X6022810	MANHOLES, SANITARY, 4'-DIAMETER, TYPE 1 FRAME, CLOSED LID	EACH	5	
	X6030310	FRAMES AND LIDS TO BE ADJUSTED (SPECIAL)	EACH	10	
	Z0004522	HOT-MIX ASPHALT DRIVEWAY PAVEMENT, 6 INCH	SQ YD	75	
	Z0048665	RAILROAD PROTECTIVE LIABILITY INSURANCE	LSUM	1	
	Z0013798	CONSTRUCTION LAYOUT	LSUM	1	

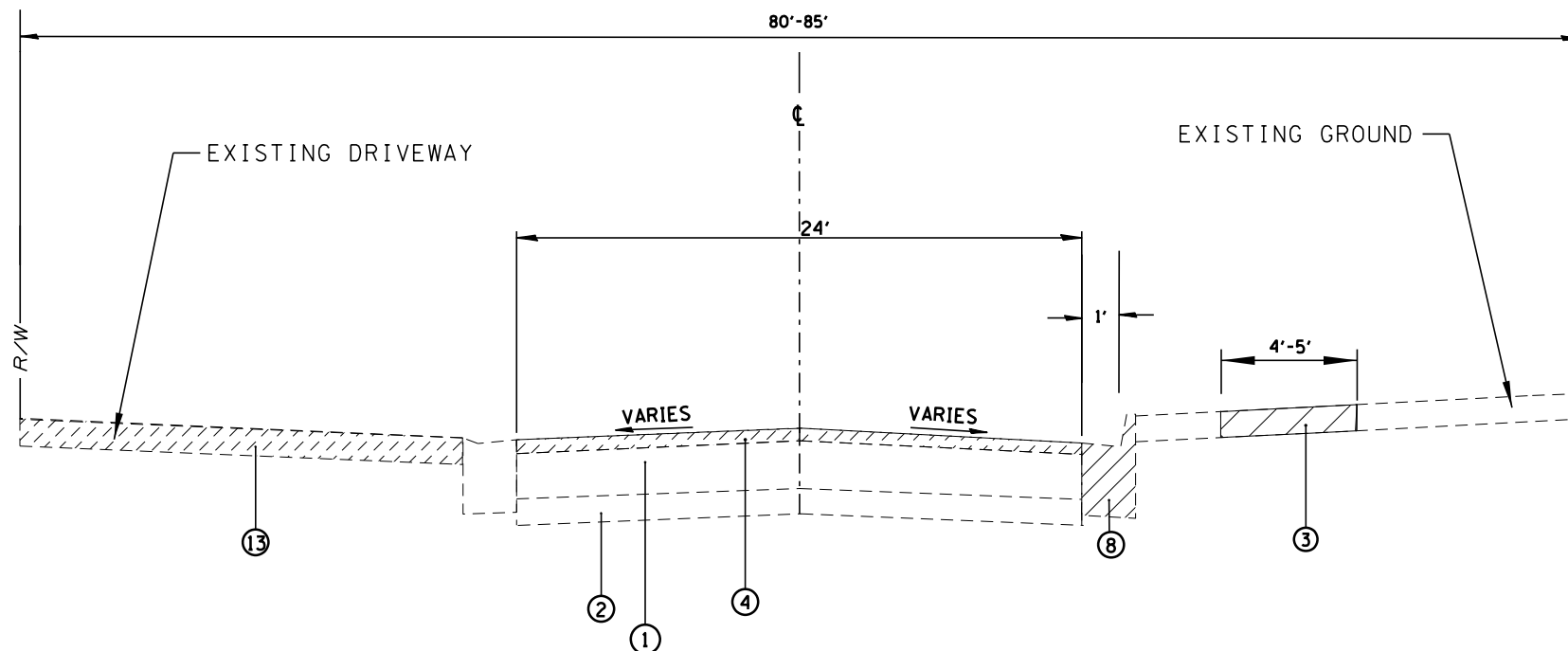
*INDICATES SPECIALTY ITEM

FILE NAME =	USER NAME = jhouseh	DESIGNED - JEH	REVISED -	STATE OF ILLINOIS DEPARTMENT OF TRANSPORTATION	SUMMARY OF QUANTITIES				F.A.U. RTE.	SECTION	COUNTY	TOTAL SHEETS	SHEET NO.
N:\HIGHWOOD\170196\02102\civil\5003.170196.dgn	E.02102 - Washington.dgn	DRAWN - JEH	REVISED -		1197	22-00059-00-RS	LAKE	25	5				
Default	PLOT SCALE = N.T.S.	CHECKED - LMF	REVISED -		CONTRACT NO. 61X91								
	PLOT DATE = 10/28/2024	DATE -	REVISED -		SCALE:	SHEET 3 OF 4 SHEETS	STA.	TO STA.	[ILLINOIS] FED. AID PROJECT				

SPECIALTY ITEM	ITEM NO.	ITEM	UNIT	CONSTRUCTION TYPE CODE 0005 (80% FEDERAL / 20% LOCAL)	NON-PARTICIPATING ITEMS (100% LOCAL)
	Z0018700	DRAINAGE STRUCTURE TO BE REMOVED	EACH	7	
	Z0030850	TEMPORARY INFORMATION SIGNING	SQ FT	51.4	

* INDICATES SPECIALTY ITEM

FILE NAME =	USER NAME = jhouseh	DESIGNED - JEH	REVISED -	STATE OF ILLINOIS DEPARTMENT OF TRANSPORTATION	SUMMARY OF QUANTITIES	F.A.U. RTE.	SECTION	COUNTY	TOTAL SHEETS	SHEET NO.
M:\HIGHWOOD\170195\02102\civil\5004.1701	S.02102 - Washington.dgn	DRAWN - JEH	REVISED -			1197	22-00059-00-R5	LAKE	25	6
PLOT SCALE = N.T.S.	CHECKED - LMF	REVISED -				CONTRACT NO. 61K91				
Default	PLOT DATE = 10/28/2024	DATE -	REVISED -			SCALE:	SHEET 4 OF 4 SHEETS	STA.	TO STA.	(ILLINOIS) FED. AID PROJECT



EXISTING TYPICAL SECTION
 STA. 10+50 - STA. 21+94 & STA. 22+41 - STA. 25+99
 (WASHINGTON AVENUE)
 N.T.S.

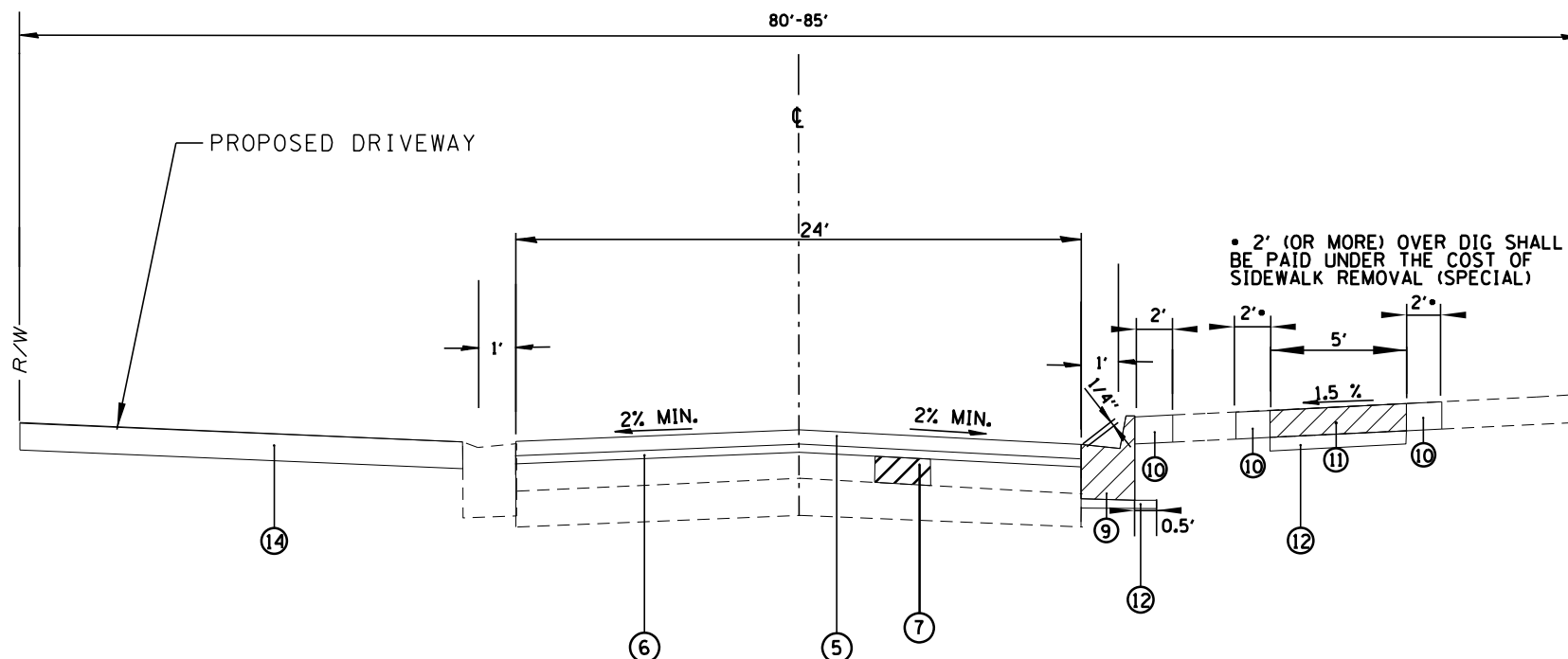
RESURFACING ITEM	AIR Voids @ Ndes	OMP
HOT-MIX ASPHALT SURFACE COURSE, MIX "D", N50 (IL-9.5 mm), 1.5"	4% @ 50 GYR.	LR 1030-2
POLYMERIZED HOT-MIX ASPHALT BINDER COURSE, IL-4.75, N50, 0.75"	3.5% @ 50 GYR.	LR 1030-2
PATCHING ITEMS		
CLASS D PATCHES, TYPE I-IV		
HOT-MIX ASPHALT BINDER COURSE, IL-19.0, 8"	4% @ 70 GYR.	LR 1030-2
CLASS D PATCHES, (SPECIAL) TYPE III, 8 INCH		
HOT-MIX ASPHALT BINDER COURSE, IL-19.0, 6"	4% @ 70 GYR.	LR 1030-2
HOT-MIX ASPHALT SURFACE COURSE, MIXTURE "D", IL-9.5, N50, 2"	4% @ 50 GYR.	LR 1030-2
HOT-MIX ASPHALT DRIVEWAY PAVEMENT, 6 INCH		
HOT-MIX ASPHALT SURFACE COURSE, MIX "D", N50, 2"	4% @ 50 GYR.	LR 1030-2
HOT-MIX ASPHALT BINDER COURSE, IL-19.0, 4"	4% @ 50 GYR.	LR 1030-2
OMP DESIGNATION: QUALITY CONTROL/QUALITY ASSURANCE (QC/QA) PER LR 1030-2		

MIXTURE REQUIREMENT NOTES:

1. THE UNIT WEIGHT USED TO CALCULATE ALL HOT-MIX ASPHALT SURFACE MIXTURE IS 112 LBS/SY/IN. THE "AC TYPE" FOR POLYMERIZED HMA MIXES SHALL BE "SBS/SBR PG 76-22" AND FOR NON-POLYMERIZED HMA THE "AC TYPE" SHALL BE "PG 64-22" UNLESS MODIFIED RECLAIMED MATERIAL SPECIFICATIONS.

NOTES:

1. PAVING OF THE FULL ROADWAY WIDTH SHALL BE COMPLETED AT THE END OF EACH DAY OF PAVING TO PREVENT A LONGITUDINAL COLD JOINT FROM APPEARING WHEN OPPOSITE SIDES OF THE ROAD ARE PAVED ON DIFFERENT DAYS. THE CONTRACTOR SHALL ALSO ENSURE THAT AT THE END OF EACH DAY EACH PASS ENDS AT APPROXIMATELY THE SAME STATION TO PREVENT A COLD JOINT.
2. PAVEMENT PATCHING SHALL BE DONE AFTER ROADWAY MILLING AS PER BD-22 DETAIL.



PROPOSED TYPICAL SECTION
 STA. 10+50 - STA. 21+94 & STA. 22+41 - STA. 25+99
 (WASHINGTON AVENUE)
 N.T.S.

LEGEND:

- ① EXISTING HOT-MIX ASPHALT PAVEMENT
- ② EXISTING AGGREGATE SUBBASE
- ③ EXISTING PCC SIDEWALK/SIDEWALK REMOVAL (SPECIAL)
- ④ HOT-MIX ASPHALT SURFACE REMOVAL, 2"
- ⑤ HOT-MIX ASPHALT SURFACE COURSE, IL-9.5, MIX "D", N50 - 1.5"
- ⑥ POLYMERIZED HOT-MIX ASPHALT BINDER COURSE, IL-4.75, N50 - 0.75"
- ⑦ CLASS D PATCHES, TYPE I-IV, 8 INCH
- ⑧ COMBINATION CURB AND GUTTER REMOVAL
- ⑨ COMBINATION CONCRETE CURB AND GUTTER, TYPE B-6.12
- ⑩ TOPSOIL FURNISH AND PLACE, 4" & SODDING, SALT TOLERANT
- ⑪ PCC SIDEWALK 5 INCH (AS DETERMINED BY ENGINEER IN FIELD)
- ⑫ SUBBASE GRANULAR MATERIAL, TYPE B 4"
- ⑬ DRIVEWAY PAVEMENT REMOVAL
- ⑭ HOT-MIX ASPHALT DRIVEWAY PAVEMENT, 6"

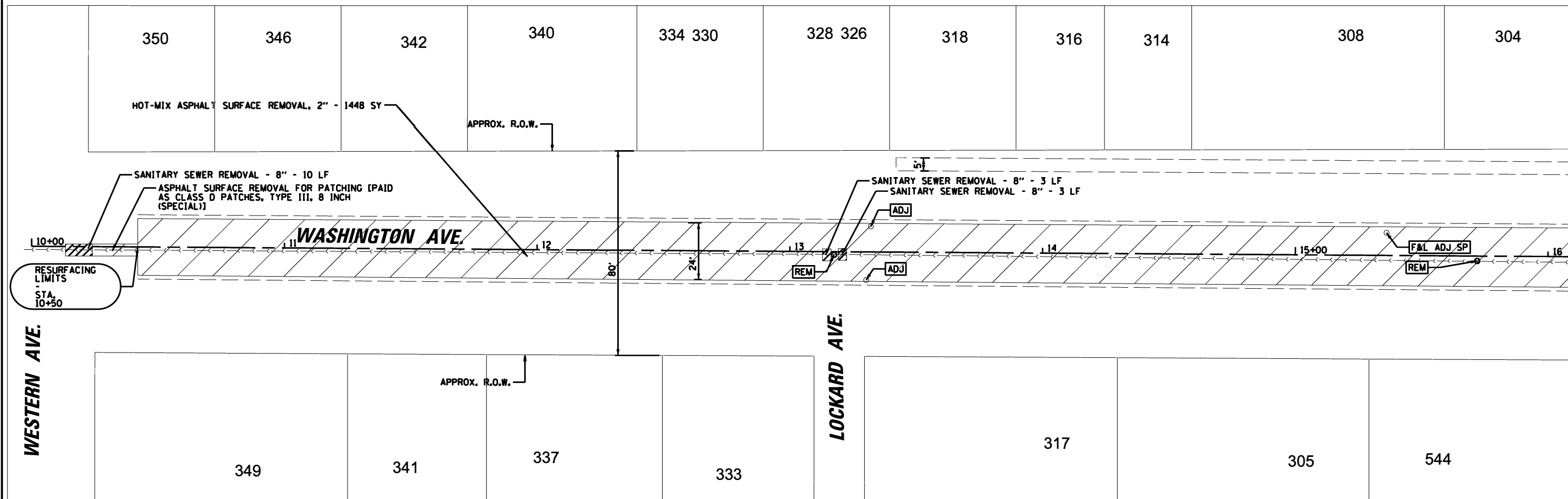
FILE NAME =	USER NAME = jhouseh	DESIGNED - JEH	REVISED -
N:\HIGHWOOD\170196\02102\Civil\TYP.170196	02102 - Washington.sht	DRAWN - JEH	REVISED -
Default	PLOT SCALE = N.T.S.	CHECKED - LMF	REVISED -
	PLOT DATE = 10/28/2024	DATE -	REVISED -

STATE OF ILLINOIS
 DEPARTMENT OF TRANSPORTATION

TYPICAL SECTIONS

SCALE: SHEET OF SHEETS STA. TO STA.

F.A.U. RTE.	SECTION	COUNTY	TOTAL SHEETS	SHEET NO.
1197	22-00059-00-R5	LAKE	25	7
CONTRACT NO. 61K91				
ILLINOIS FED. AID PROJECT				



LEGEND:

	COMBINATION CURB AND GUTTER REMOVAL
	HOT-MIX ASPHALT SURFACE REMOVAL, 2"
	SIDEWALK REMOVAL
	DRAINAGE STRUCTURE TO BE REMOVED
	STRUCTURES TO BE ADJUSTED
	FRAMES AND LIDS TO BE ADJUSTED
	DRIVEWAY PAVEMENT REMOVAL
	SANITARY SEWER REMOVAL - 8"

FILE NAME =	USER NAME = jhouseh	DESIGNED - JEH	REVISED -
N:\HIGHWOOD\170196\02102\Civil\REMI.170196.D2102 - Washington.sht		DRAWN - JEH	REVISED -
Default	PLOT SCALE = 48'	CHECKED - LMF	REVISED -
	PLOT DATE = 10/28/2024	DATE -	REVISED -

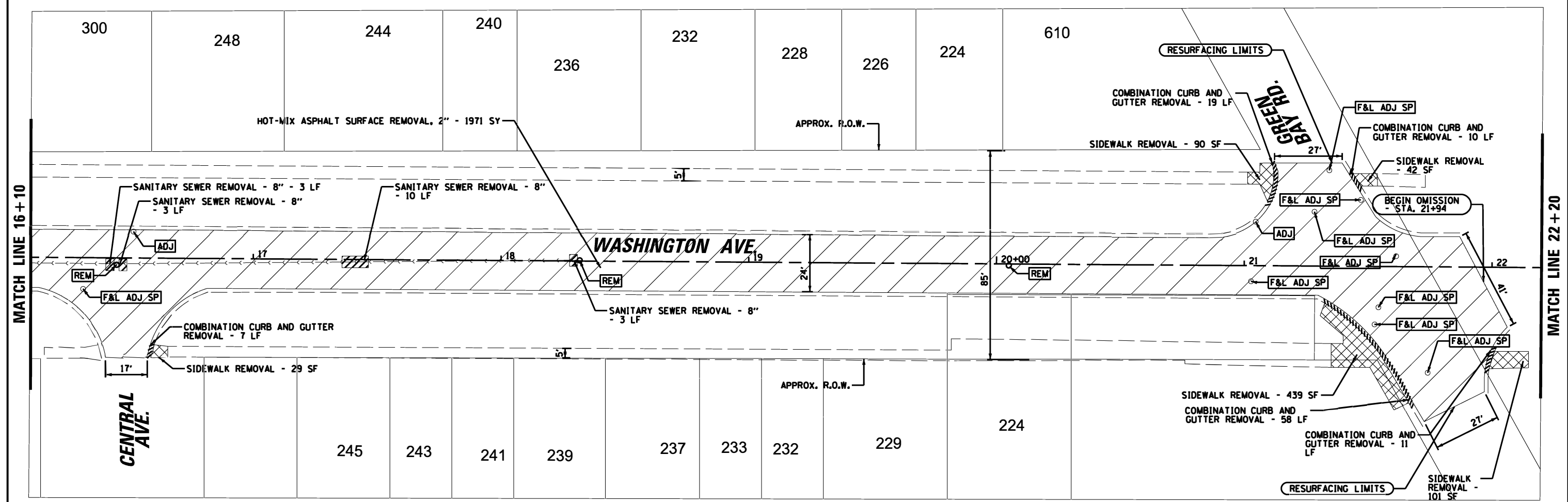
**STATE OF ILLINOIS
DEPARTMENT OF TRANSPORTATION**

**WASHINGTON AVE.
EXISTING CONDITIONS AND REMOVAL PLAN**

SCALE: SHEET OF SHEETS STA. TO STA.

F.A. RTE.	SECTION	COUNTY	TOTAL SHEETS	SHEET NO.
1197	22-00059-00-RS	LAKE	25	8
CONTRACT NO. 61K91				
ILLINOIS FED. AID PROJECT				

MATCH LINE 16+10



LEGEND:

	COMBINATION CURB AND GUTTER REMOVAL
	HOT-MIX ASPHALT SURFACE REMOVAL, 2"
	SIDEWALK REMOVAL
	DRAINAGE STRUCTURE TO BE REMOVED
	STRUCTURES TO BE ADJUSTED
	FRAMES AND LIDS TO BE ADJUSTED
	DRIVEWAY PAVEMENT REMOVAL
	SANITARY SEWER REMOVAL - 8"

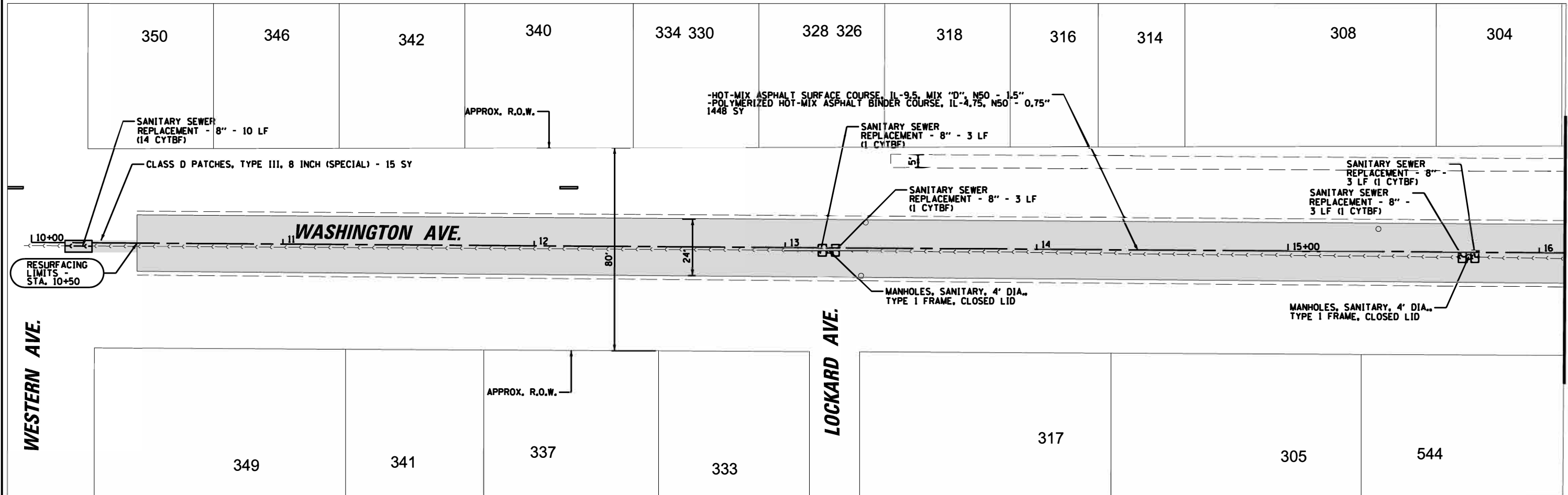
FILE NAME =	USER NAME = jhouseh	DESIGNED - JEH	REVISED -
N:\HIGHWOOD\170196\02102\Civi\REM2.1701	6.D2102 - Washington.sht	DRAWN - JEH	REVISED -
Default	PLOT SCALE = 48'	CHECKED - LMF	REVISED -
	PLOT DATE = 10/28/2024	DATE -	REVISED -

**STATE OF ILLINOIS
DEPARTMENT OF TRANSPORTATION**

**WASHINGTON AVE.
EXISTING CONDITIONS AND REMOVAL PLAN**

SCALE: SHEET OF SHEETS STA. TO STA.

F.A. RTE.	SECTION	COUNTY	TOTAL SHEETS	SHEET NO.
1197	22-00059-00-R5	LAKE	25	9
CONTRACT NO. 61K91				
ILLINOIS FED. AID PROJECT				



LEGEND:

- COMBINATION CONCRETE CURB AND GUTTER, TYPE B-6.12
- HOT-MIX ASPHALT SURFACE COURSE, IL-9.5, MIX "D", N50 - 1.5"
-POLYMERIZED HOT-MIX ASPHALT BINDER COURSE, IL-4.75, N50 - 0.75"
- PORTLAND CEMENT CONCRETE SIDEWALK, 5 INCH
- CONCRETE PARKING BLOCKS
- MANHOLES, SANITARY, 4'-DIAMETER, TYPE 1 FRAME, CLOSED LID
- INLET, TYPE A, TYPE 3 FRAME AND GRATE
- DETECTABLE WARNING
- STRUCTURES TO BE ADJUSTED
- HMA DRIVEWAY PAVEMENT, 6 INCH
- SANITARY SEWER REPLACEMENT - 8"

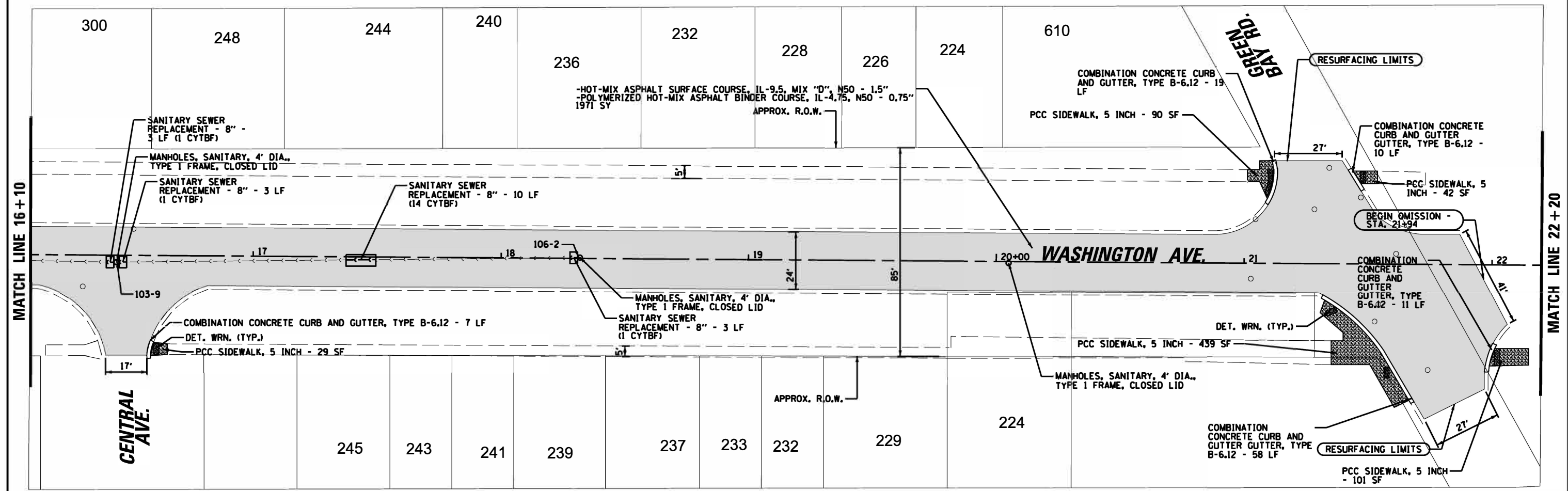
FILE NAME =	USER NAME = jhouseh	DESIGNED - JEH	REVISED -
N:\HIGHWOOD\170196\02102\Civil\PROJ\170196\02102 - Washington.sht		DRAWN - JEH	REVISED -
Default	PLOT SCALE = 48'	CHECKED - LMF	REVISED -
	PLOT DATE = 10/28/2024	DATE -	REVISED -

**STATE OF ILLINOIS
DEPARTMENT OF TRANSPORTATION**

**WASHINGTON AVE.
PROPOSED PLAN**

SCALE: SHEET OF SHEETS STA. TO STA.

F.A. RTE.	SECTION	COUNTY	TOTAL SHEETS	SHEET NO.
1197	22-00059-00-RS	LAKE	25	11
CONTRACT NO. 61K91				
ILLINOIS FED. AID PROJECT				



LEGEND:

- COMBINATION CONCRETE CURB AND GUTTER, TYPE B-6.12
- HOT-MIX ASPHALT SURFACE COURSE, IL-9.5, MIX "D", N50 - 1.5"
-POLYMERIZED HOT-MIX ASPHALT BINDER COURSE, IL-4.75, N50 - 0.75"
- PORTLAND CEMENT CONCRETE SIDEWALK, 5 INCH
- CONCRETE PARKING BLOCKS
- MANHOLES, SANITARY, 4'-DIAMETER, TYPE 1 FRAME, CLOSED LID
- INLET, TYPE A, TYPE 3 FRAME AND GRATE
- DETECTABLE WARNING
- STRUCTURES TO BE ADJUSTED
- HMA DRIVEWAY PAVEMENT, 6 INCH
- SANITARY SEWER REPLACEMENT - 8"

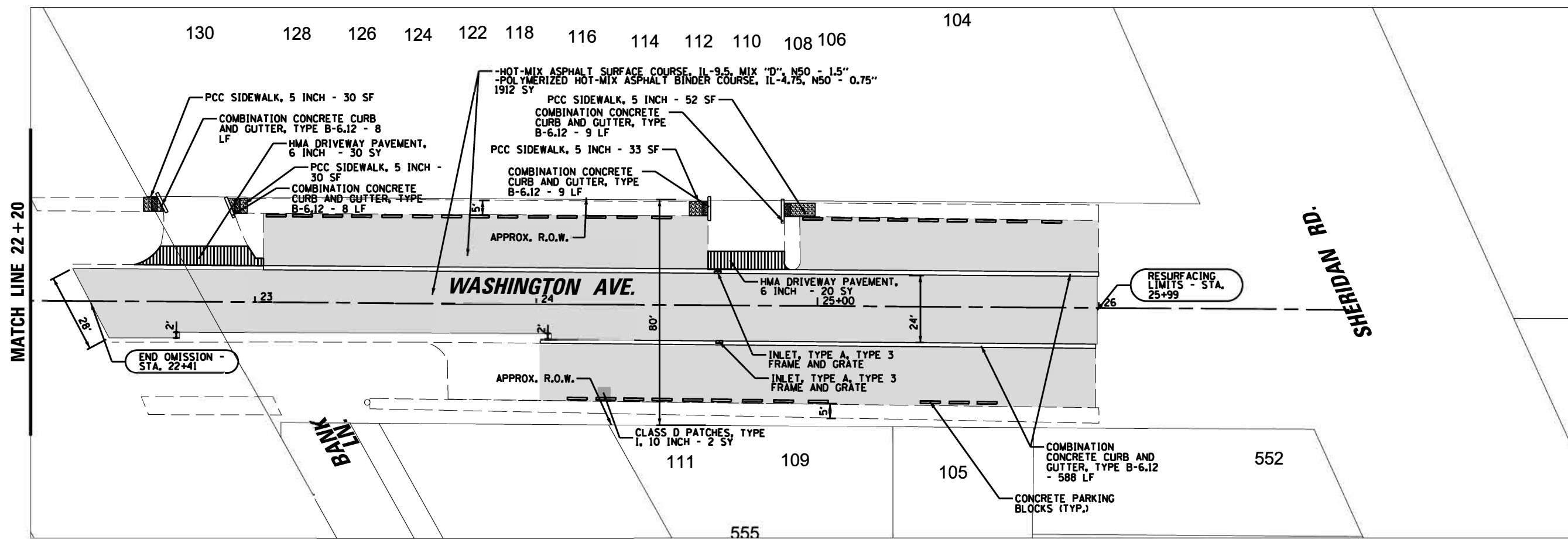
FILE NAME =	USER NAME = jhouseh	DESIGNED - JEH	REVISED -
N:\HIGH\DD\170196\02102\Civil\PROJ2\170196\02102 - Washington.dwg		DRAWN - JEH	REVISED -
Default	PLOT SCALE = 48"	CHECKED - LMF	REVISED -
	PLOT DATE = 10/28/2024	DATE -	REVISED -

**STATE OF ILLINOIS
DEPARTMENT OF TRANSPORTATION**

**WASHINGTON AVENUE
PROPOSED PLAN**

SCALE: SHEET OF SHEETS STA. TO STA.

F.A. RTE.	SECTION	COUNTY	TOTAL SHEETS	SHEET NO.
1197	22-00059-00-R5	LAKE	25	12
ILLINOIS FED. AID PROJECT			CONTRACT 61K91	



LEGEND:

- COMBINATION CONCRETE CURB AND GUTTER, TYPE B-6.12
- HOT-MIX ASPHALT SURFACE COURSE, IL-9.5, MIX "D", N50 - 1.5"
-POLYMERIZED HOT-MIX ASPHALT BINDER COURSE, IL-4.75, N50 - 0.75"
- PORTLAND CEMENT CONCRETE SIDEWALK, 5 INCH
- CONCRETE PARKING BLOCKS
- MANHOLES, SANITARY, 4'-DIAMETER, TYPE 1 FRAME, CLOSED LID
- INLET, TYPE A, TYPE 3 FRAME AND GRATE
- DETECTABLE WARNING
- STRUCTURES TO BE ADJUSTED
- HMA DRIVEWAY PAVEMENT, 6 INCH
- SANITARY SEWER REPLACEMENT - 8"

FILE NAME =	USER NAME = jhouseh	DESIGNED - JEH	REVISED -
N:\HIGHWOOD\170196\02102\Civil\PRO3.170196.D2102 - Washington.sht		DRAWN - JEH	REVISED -
Default	PLOT SCALE = 48'	CHECKED - LMF	REVISED -
	PLOT DATE = 10/28/2024	DATE -	REVISED -

**STATE OF ILLINOIS
DEPARTMENT OF TRANSPORTATION**

**WASHINGTON AVENUE
PROPOSED PLAN**

SCALE: SHEET OF SHEETS STA. TO STA.

F.A. RTE.	SECTION	COUNTY	TOTAL SHEETS	SHEET NO.
1197	22-00059-00-RS	LAKE	25	13
CONTRACT NO. 61K91				
ILLINOIS FED. AID PROJECT				



RESURFACING
LIMITS -
STA. 10+50

WESTERN AVE.

LOCKARD AVE.

MATCH LINE 16+10

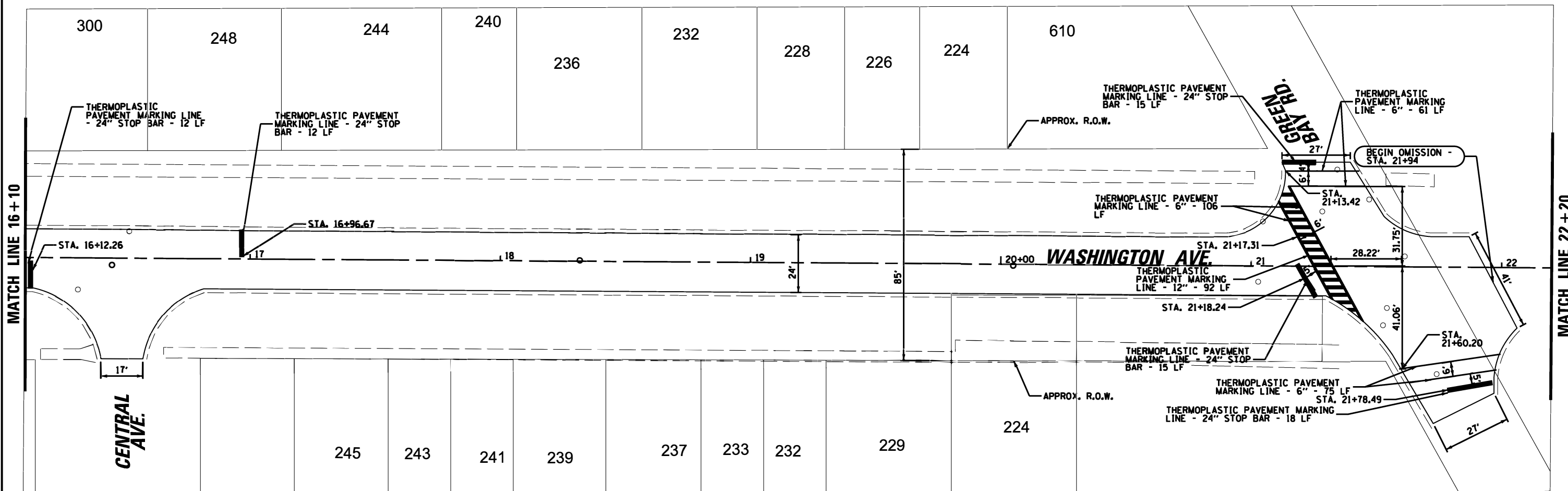
FILE NAME =	USER NAME = jhouseh	DESIGNED - JEH	REVISED -
N:\HIGHWOOD\170196\02102\Civil\PMK1.170196.D2102 - Washington.sht		DRAWN - JEH	REVISED -
Default	PLOT SCALE = 48'	CHECKED - LMF	REVISED -
	PLOT DATE = 10/28/2024	DATE -	REVISED -

STATE OF ILLINOIS
DEPARTMENT OF TRANSPORTATION

WASHINGTON AVE.
PAVEMENT MARKING PLAN

SCALE: SHEET OF SHEETS STA. TO STA.

F.A. RTE.	SECTION	COUNTY	TOTAL SHEETS	SHEET NO.
1197	22-00059-00-R5	LAKE	25	14
CONTRACT NO. 61K91				
ILLINOIS FED. AID PROJECT				



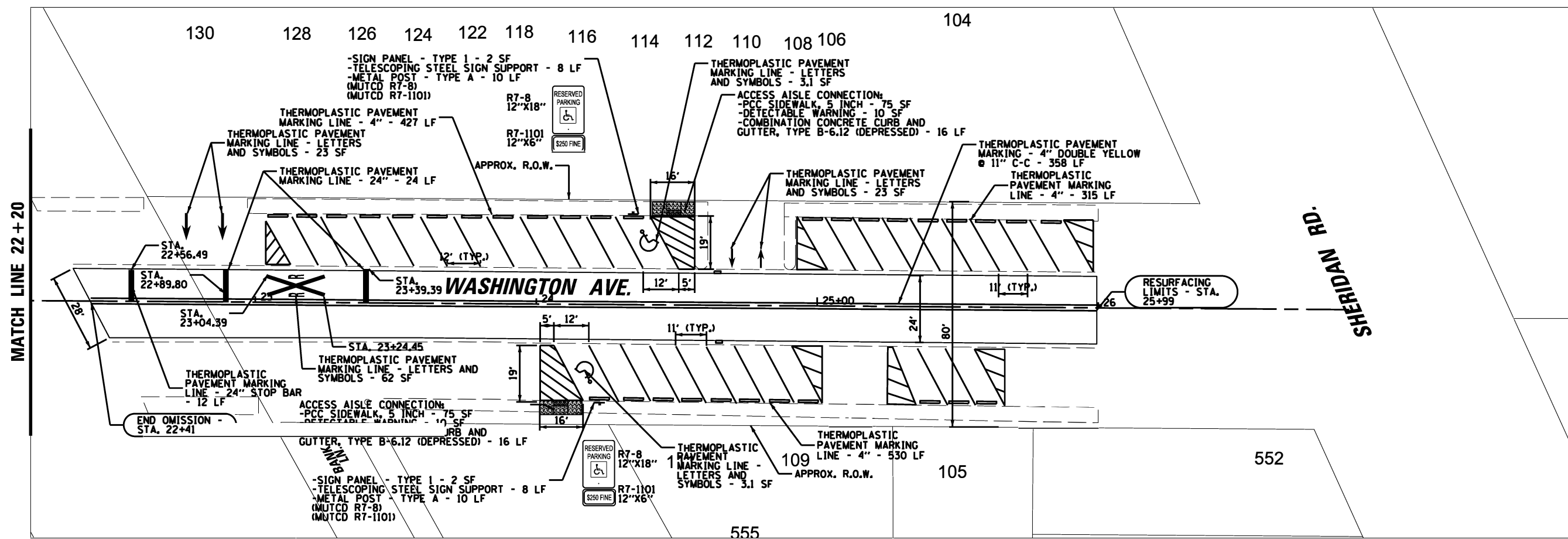
FILE NAME =	USER NAME = jhouseh	DESIGNED - JEH	REVISED -
N:\HIGHWOOD\170196\02102\Civil\PMK2.1701	6.D2102 - Washington.sht	DRAWN - JEH	REVISED -
Default	PLOT SCALE = 40'	CHECKED - LMF	REVISED -
	PLOT DATE = 10/28/2024	DATE -	REVISED -

**STATE OF ILLINOIS
DEPARTMENT OF TRANSPORTATION**

**WASHINGTON AVENUE
PAVEMENT MARKING PLAN**

SCALE: SHEET OF SHEETS STA. TO STA.

F.A. RTE.	SECTION	COUNTY	TOTAL SHEETS	SHEET NO.
1197	22-00059-00-RS	LAKE	25	15
CONTRACT NO. 61K91				
ILLINOIS FED. AID PROJECT				

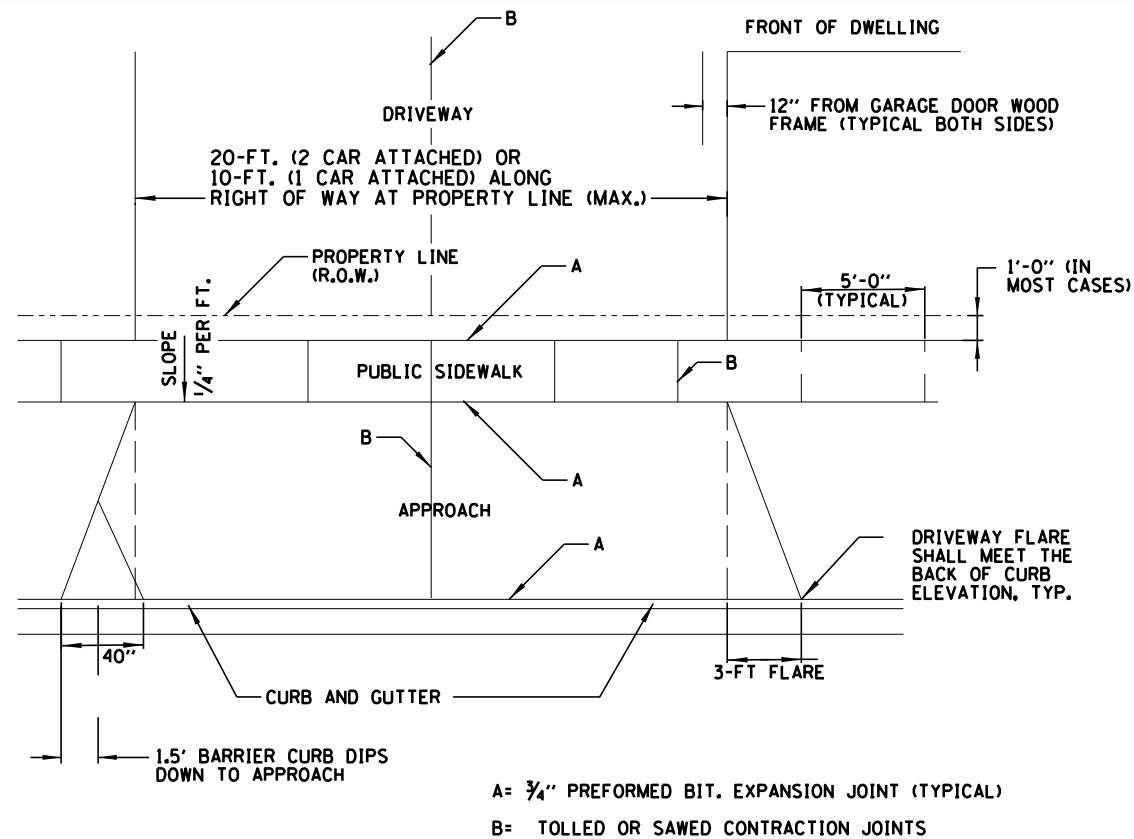


FILE NAME =	USER NAME = jhouseh	DESIGNED - JEH	REVISED -
N:\HIGHWOOD\170196\02102\Civil\PMK3.170196.D2102 - Washington.sht		DRAWN - JEH	REVISED -
Default	PLOT SCALE = 48'	CHECKED - LMF	REVISED -
	PLOT DATE = 11/1/2024	DATE -	REVISED -

**STATE OF ILLINOIS
DEPARTMENT OF TRANSPORTATION**

WASHINGTON AVENUE PAVEMENT MARKING PLAN			
SCALE:	SHEET	OF	SHEETS
	STA.	TO	STA.

F.A. RTE.	SECTION	COUNTY	TOTAL SHEETS	SHEET NO.
1197	22-00059-00-R5	LAKE	25	16
CONTRACT NO. 61K91				
ILLINOIS FED. AID PROJECT				

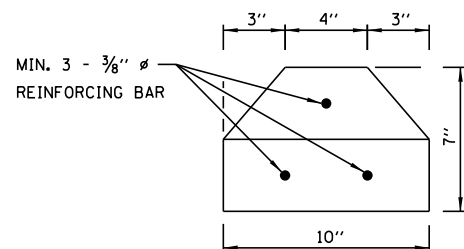
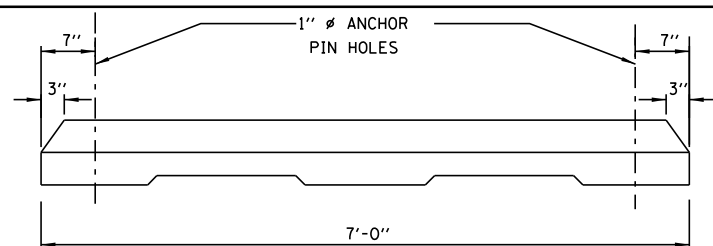


DRIVEWAY WITH A CURB AND GUTTER

GENERAL NOTES:

- DRIVEWAY SHALL HAVE A MIN. SLOPE OF 2% AND MAX. SLOPE OF 6%.
- APPROACH SHALL HAVE A MIN. SLOPE OF 2% AND MAX. OF 6%.
- ALL AGGREGATE SUB-BASE SHALL BE MECHANICALLY COMPACTED. (95% PROCTOR)
- PUBLIC SIDEWALK SHALL BE 8" AT COMMERCIAL/INDUSTRIAL DRIVEWAYS. (NO WIRE MESH)
- MINIMUM THICKNESS FOR APPROACH. (NO WIRE MESH). THIS WILL BE PAID FOR BY THE FOLLOWING ITEMS:
 - A. 6" THK. HOT-MIX ASPHALT (2" SURFACE, 4" BINDER) N50 ON 6" AGGREGATE BASE COURSE TYPE B
- TOPSOIL, 4" (100) AND SODDING, SALT TOLERANT RESTORATION SHALL BE PAID FOR SEPARATELY UNDER THEIR RESPECTIVE PAY ITEMS.

A= 3/4" PREFORMED BIT. EXPANSION JOINT (TYPICAL)
 B= TOLLED OR SAWED CONTRACTION JOINTS

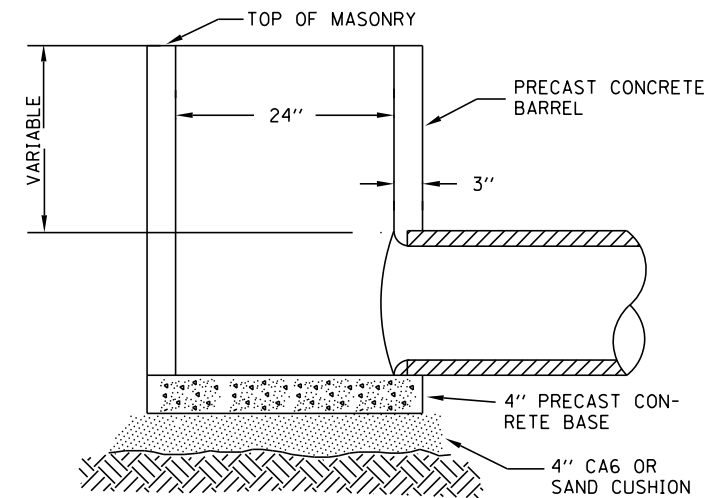


NOTES:

ANCHOR PINS SHALL BE 1" DIAMETER, 3' LONG.

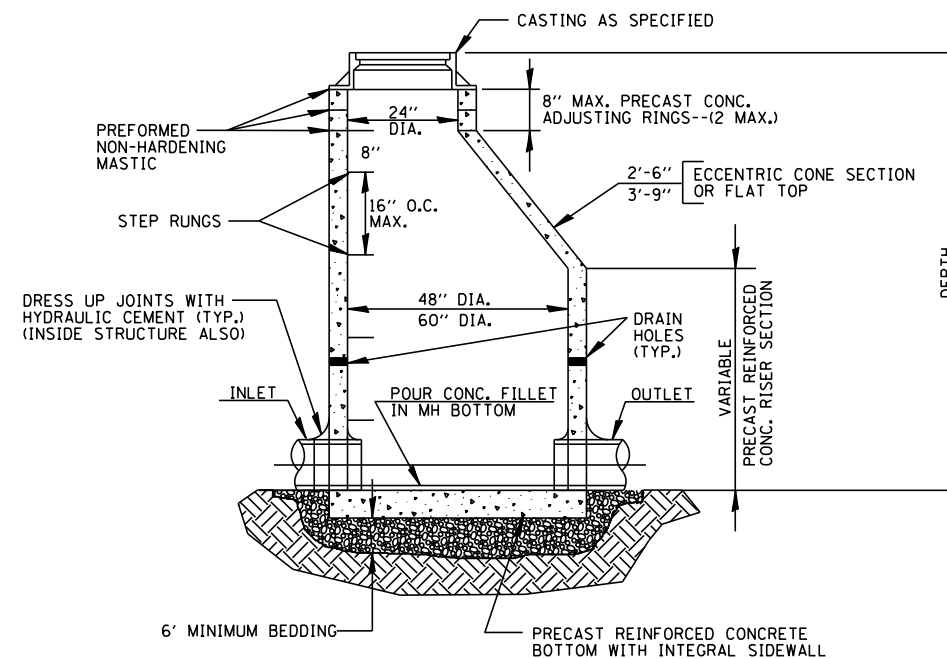
 CLASS PC CONCRETE SHALL BE USED THROUGHOUT.

PRECAST CONCRETE PARKING BLOCK



PRE-CAST REINFORCED CONCRETE RISER RINGS SHALL COMPLY WITH ASTM C-39.
 ALL JOINTS BETWEEN PRE-CAST ELEMENTS, ADJUSTING RINGS AND MANHOLE FRAMES SHALL BE SET IN PLACE WITH A BUTYL RUBBER JOINT SEALANT.

INLET TYPE A



GENERAL NOTES

- PROVIDE SELECT GRANULAR BACKFILL, CA-6 AROUND MANHOLE TO SUBGRADE ELEVATION IN PAVED AREAS.
- WHEN THE FRAME DOES NOT MEET PROPOSED ELEVATION, A MAXIMUM OF TWO PRECAST CONCRETE RINGS MAY BE USED TO A MAXIMUM HEIGHT OF 8 INCHES. THE RING(S) SHALL BE SET IN A BED OF PREFORMED NON-HARDENING MASTIC (RUB-R-NEK OR APPROVED EQUAL).
- MORTAR NOT BE USED TO DRESS UP ADJUSTING RINGS.
- ONLY PLASTIC POLYMER STEPS SHALL BE USED.
- WHEN MANHOLE DEPTH IS OVER 12 FEET, THE THICKNESS OF THE BASE SHALL BE 10 INCHES. WHEN MANHOLE DEPTH IS LESS THAN 12 FEET, THE THICKNESS OF THE BASE SHALL BE A MINIMUM OF 8 INCHES.

MANHOLE TYPE A

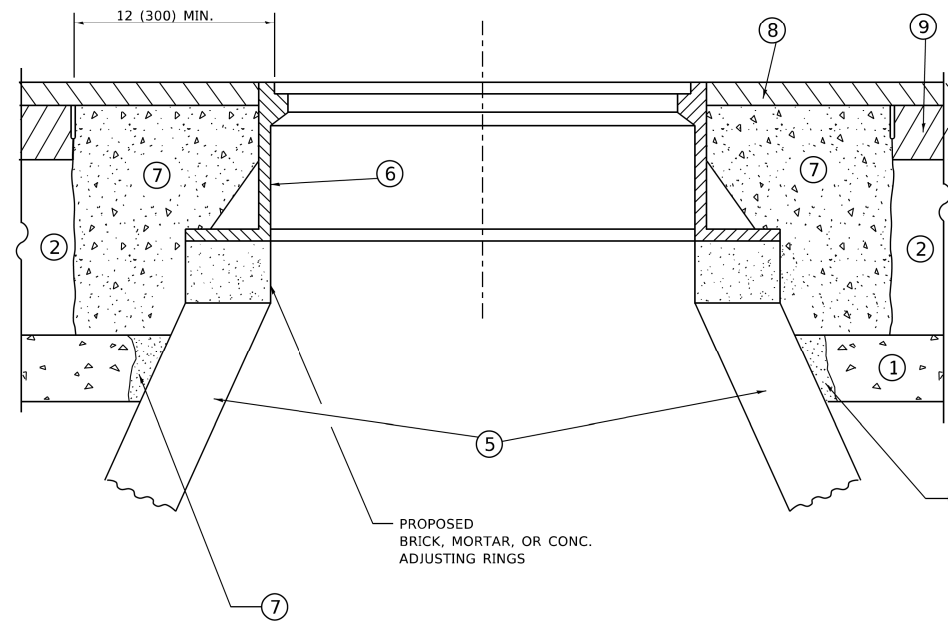
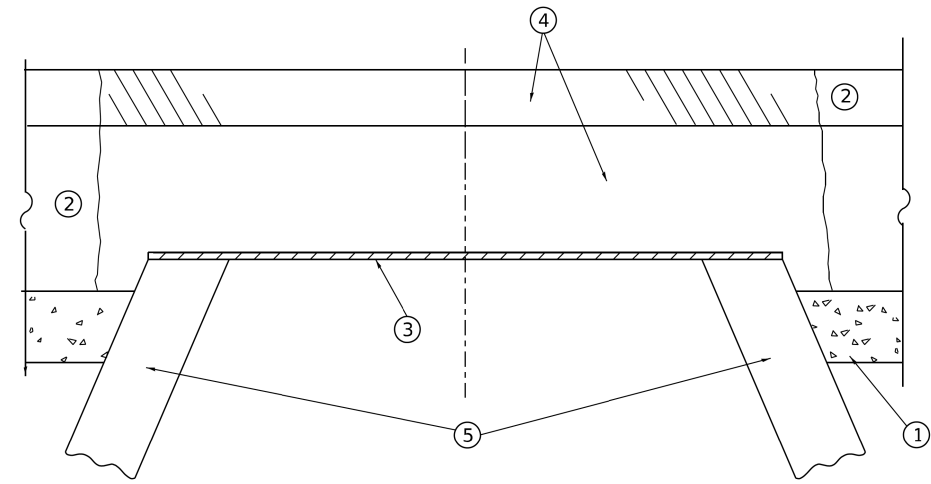
FILE NAME =	USER NAME = jhouseh	DESIGNED - JEH	REVISED -
N:\HIGHWOOD\170196\02102\Civil\DET.170196	02102 - Washington.sht	DRAWN - JEH	REVISED -
Default	PLOT SCALE = N.T.S.	CHECKED - LMF	REVISED -
	PLOT DATE = 10/28/2024	DATE -	REVISED -

STATE OF ILLINOIS
 DEPARTMENT OF TRANSPORTATION

CONSTRUCTION DETAILS

SCALE: SHEET OF SHEETS STA. TO STA.

F.A.U. RTE.	SECTION	COUNTY	TOTAL SHEETS	SHEET NO.
1197	22-00059-00-R5	LAKE	25	17
CONTRACT NO. 61K91				
ILLINOIS FED. AID PROJECT				



**DETAILS FOR FRAMES AND LIDS ADJUSTMENT
WITH MILLING**

NOTES

- EXISTING BROKEN FRAMES AND LIDS SHALL BE REMOVED AND DISPOSED OF BY THE CONTRACTOR AND SHALL BE REPLACED AS DIRECTED BY THE ENGINEER. REPLACEMENT FRAMES AND LIDS WILL BE PAID FOR IN ACCORDANCE WITH ARTICLE 109.04 OF THE STANDARD SPECIFICATIONS UNLESS A SEPARATE PAY ITEM HAS BEEN PROVIDED.
- IF THE EXISTING LIDS ARE OPEN, THE FRAME WILL BE ADJUSTED TO THE ELEVATION OF THE MILLED PAVEMENT SURFACE PRIOR TO THE MILLING OPERATION. THE FRAME WILL NOT BE REMOVED AND COVERED BY THE METAL PLATE.
- CITY OF CHICAGO CASTINGS ARE THE PROPERTY OF THE CITY AND THE CONTRACTOR SHALL NOTIFY THE CITY FOR REMOVAL AND DISPOSITION OF THE CASTINGS.
- THE METAL PLATE USED TO COVER THE STRUCTURE SHALL REMAIN THE PROPERTY OF THE CONTRACTOR.
- THE CONTRACTOR SHALL REMOVE ALL TRAFFIC CONTROL DEVICES BY THE END OF EACH WORK SHIFT.

CONSTRUCTION PROCEDURES

STAGE 1 (BEFORE PAVEMENT MILLING)

- REMOVE A MINIMUM OF 12 (300) OF THE PAVEMENT FROM AROUND THE STRUCTURE.
- REMOVE THE EXISTING FRAME AND LID FROM THE STRUCTURE.
- COVER THE STRUCTURE OPENING WITH A 36 (900) DIAMETER METAL PLATE.
- BACKFILL WITH CRUSHED STONE AND HMA SURFACE MIX APPROVED BY THE ENGINEER. (MIN. 3 (80) HMA TO REMAIN AFTER MILLING).

STAGE 2 (AFTER PAVEMENT MILLING)

- REMOVE THE HMA SURFACE MIX AND CRUSHED STONE.
- INSTALL THE FRAME AND LID; ADJUST THE FRAME TO ITS FINAL SURFACE ELEVATION.
- THE SURROUNDING SPACE SHALL BE FILLED WITH CLASS PP-2* CONCRETE TO THE ELEVATION OF THE SURFACE OF THE EXISTING BASE COURSE OR THE BINDER COURSE.

* UNLESS OTHERWISE SPECIFIED IN THE PLANS.

THE PROCEDURE EXPLAINED ABOVE SHALL CONFORM TO THE APPLICABLE PORTIONS OF SECTIONS 353, 406, 602, AND 603 OF THE STANDARD SPECIFICATIONS EXCEPT THAT "THE CONTRACTOR SHALL ADJUST THE STRUCTURES TO THE FINISHED PAVEMENT ELEVATION NO MORE THAN 5 CALENDAR DAYS PRIOR TO PLACEMENT OF THE FINAL LIFT OF SURFACE UNLESS APPROVED BY THE ENGINEER."

LEGEND

- | | |
|--|-------------------------------|
| ① SUB-BASE GRANULAR MATERIAL | ⑥ FRAME AND LID (SEE NOTES) |
| ② EXISTING PAVEMENT | ⑦ CLASS PP-2* CONCRETE |
| ③ 36 (900) DIAMETER METAL PLATE | ⑧ PROPOSED HMA SURFACE COURSE |
| ④ PROPOSED CRUSHED STONE AND HMA SURFACE MIX | ⑨ PROPOSED HMA BINDER COURSE |
| ⑤ EXISTING STRUCTURE | |

LOCATION OF STRUCTURES

THE CONTRACTOR WILL BE REQUIRED TO KEEP A RECORD OF THE LOCATIONS OF THE BURIED STRUCTURES ACCORDING TO THE STATION AND DISTANCE LEFT OR RIGHT OF THE CENTERLINE OF PAVEMENT. UPON COMPLETION OF THE WORK, THE CONTRACTOR WILL DELIVER THE RECORD TO THE ENGINEER.

BASIS OF PAYMENT

- REMOVING FRAMES AND LIDS ON DRAINAGE AND UTILITY STRUCTURES IN THE PAVEMENT PRIOR TO MILLING, AND ADJUSTING TO FINAL GRADE PRIOR TO PLACING THE SURFACE COURSE, WILL BE PAID FOR AT THE CONTRACT UNIT PRICE EACH FOR "FRAMES AND LIDS TO BE ADJUSTED (SPECIAL)."
- THIS WORK WILL NOT BE PAID FOR WHEN DRAINAGE AND UTILITY STRUCTURES ARE SPECIFIED FOR PAYMENT AS STRUCTURE RECONSTRUCTION.
- NEW FRAMES AND LIDS, WHEN SPECIFIED, WILL BE PAID FOR SEPARATELY.
- WHEN STRUCTURES ARE TO BE ADJUSTED OR RECONSTRUCTED, THE LOWERING AND RAISING OF THE FRAMES AND LIDS WILL NOT BE PAID FOR SEPARATELY BUT WILL BE INCLUDED IN THE COST OF THE CORRESPONDING PAY ITEM.

ALL DIMENSIONS ARE IN INCHES (MILLIMETERS) UNLESS OTHERWISE SHOWN

MODEL: Default
FILE: Name: W:\BIS\40223\310b08.dgn

USER NAME = Lawrence.DeManche	DESIGNED - R. SHAH	REVISED - R. BORO 03-09-11
	DRAWN -	REVISED - R. BORO 12-06-11
PLOT SCALE = 100.0000' / in.	CHECKED -	REVISED - K. SMITH 11-18-22
PLOT DATE = 9/15/2023	DATE - 10-25-94	REVISED - K. SMITH 09-15-23

**STATE OF ILLINOIS
DEPARTMENT OF TRANSPORTATION**

**DETAILS FOR
FRAMES AND LIDS ADJUSTMENT WITH MILLING**

SCALE: NONE SHEET 1 OF 1 SHEETS STA. TO STA.

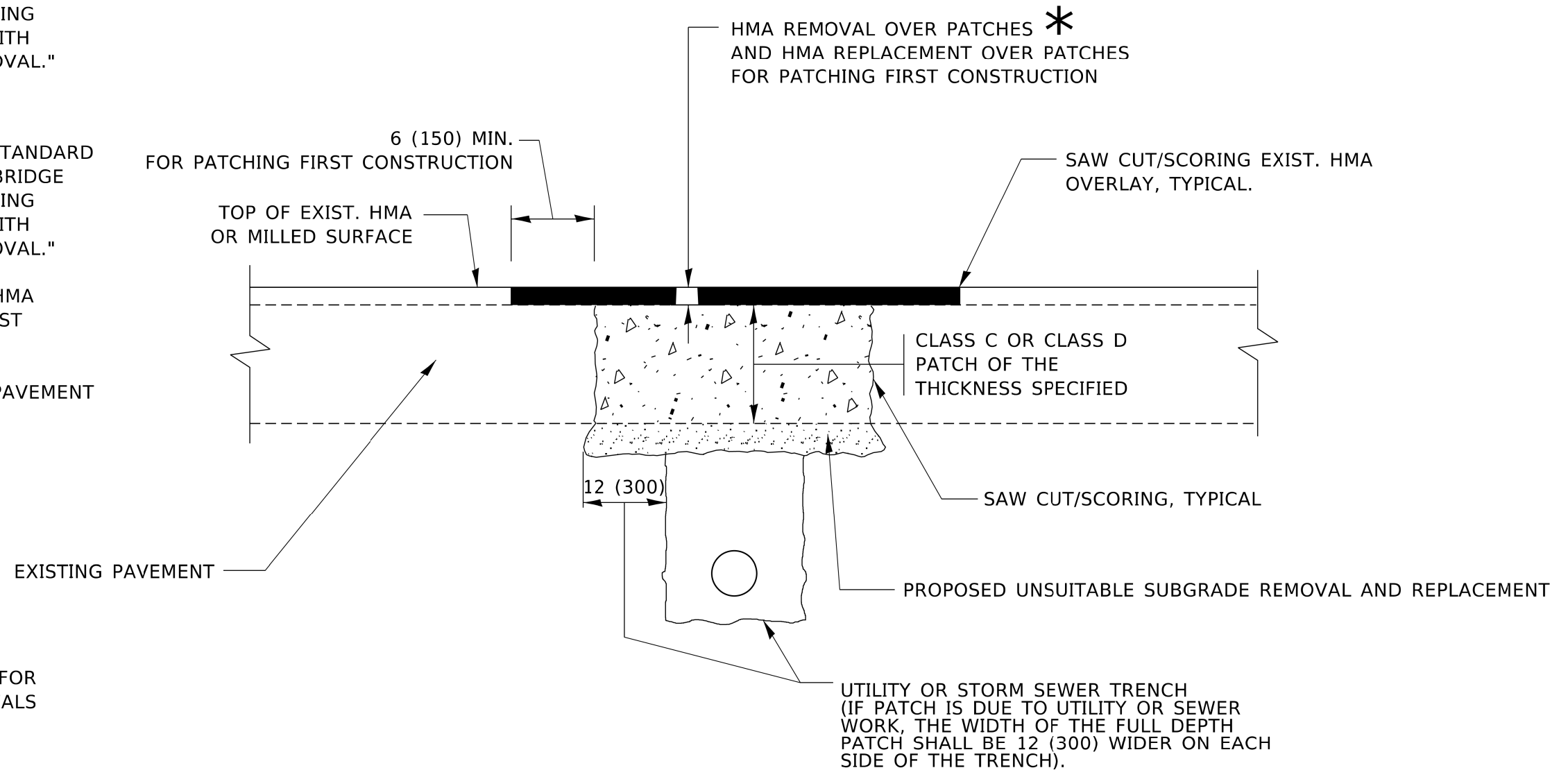
F.A.U. RTE.	SECTION	COUNTY	TOTAL SHEETS	SHEET NO.
1197	22-00059-00-RS	LAKE	25	18
BD600-03 (BD-08)		CONTRACT NO. 61K91		
ILLINOIS		FED. AID PROJECT		

METHOD OF MEASUREMENT

REFER TO SECTION 442 OF THE STANDARD SPECIFICATIONS FOR ROAD AND BRIDGE CONSTRUCTION AND THE RECURRING SPECIAL PROVISION "PATCHING WITH HOT-MIX ASPHALT OVERLAY REMOVAL."

BASIS OF PAYMENT

1. REFER TO SECTION 442 OF THE STANDARD SPECIFICATIONS FOR ROAD AND BRIDGE CONSTRUCTION AND THE RECURRING SPECIAL PROVISION "PATCHING WITH HOT-MIX ASPHALT OVERLAY REMOVAL."
2. SAW CUT/SCORING OF EXISTING HMA OVERLAY IS INCLUDED IN THE COST OF PAVEMENT PATCHING.
3. SAW CUT/SCORING OF EXISTING PAVEMENT IS INCLUDED IN THE COST OF PAVEMENT PATCHING.



* SEE TYPICAL SECTIONS FOR THICKNESS AND MATERIALS

SEQUENCE OF CONSTRUCTION (PATCHING FIRST)

1. REMOVE THE EXISTING HMA MATERIAL OVER THE AREA TO BE PATCHED.
2. REMOVE AND REPLACE WITH CLASS C OR D PATCH.
3. REPLACE HMA MATERIAL OVER THE AREA TO BE PATCHED.

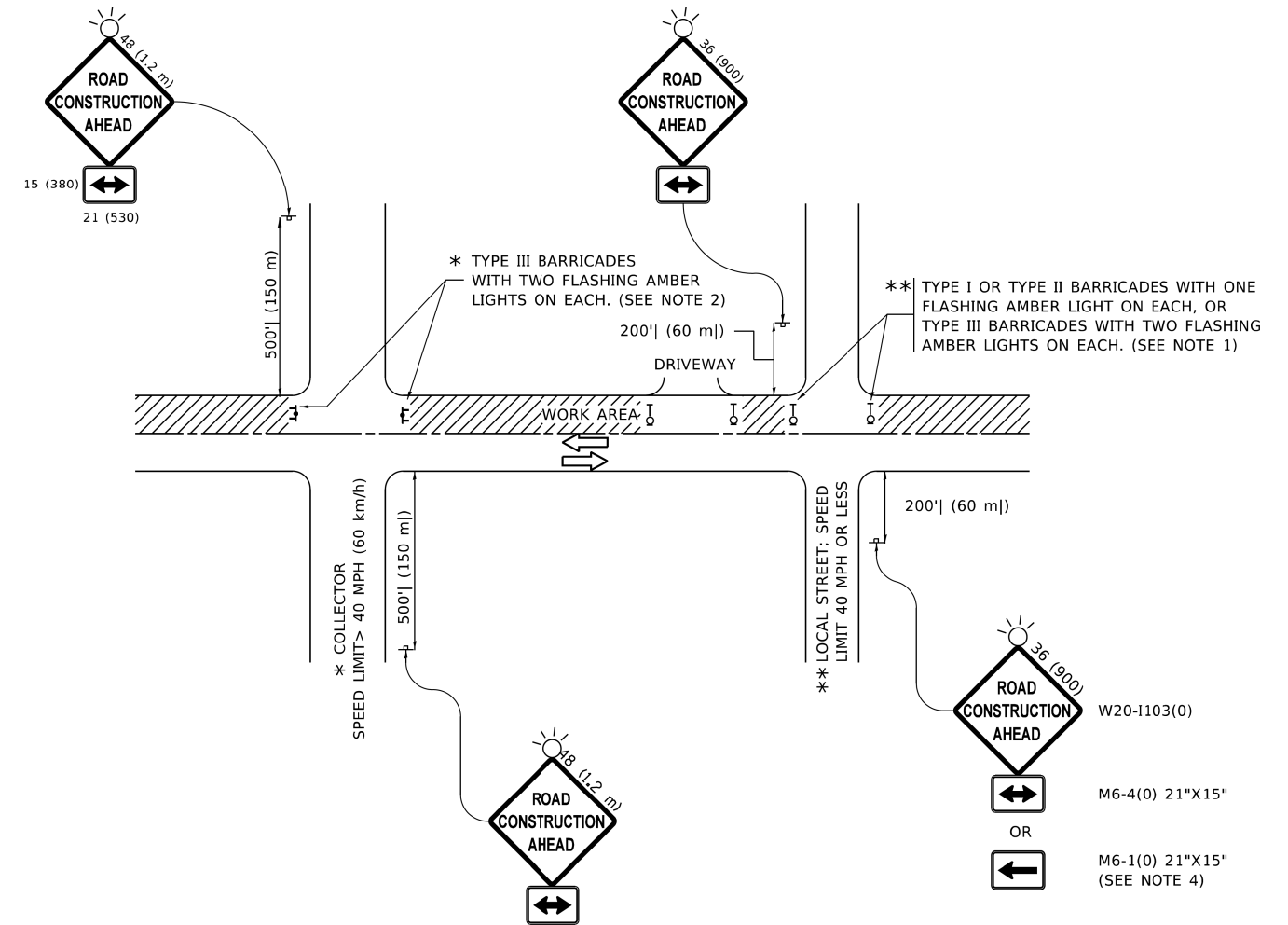
SEQUENCE OF CONSTRUCTION (MILLING FIRST)

1. MILL HMA FIRST IF THERE IS AT LEAST 4½ INCHES OR MORE OF HMA MATERIAL ON TOP OF THE EXISTING PAVEMENT OR IF THE PAVEMENT IS FULL DEPTH HMA. A MINIMUM OF 2 INCHES OF HMA MATERIAL SHALL BE IN PLACE AFTER MILLING.
2. REMOVE AND REPLACE WITH FULL DEPTH CLASS D PATCHES TO TOP OF MILLED SURFACE.

ALL DIMENSIONS ARE IN INCHES (MILLIMETERS) UNLESS OTHERWISE SHOWN.

MODEL: Default
FILE: \\p01\dot-cw-bentley.com\PI\DOT\Documents\DOT_Offices\Bentley_1\Projects\BIS\02713\ACAD\DATA\CAD\Sheets\027.dgn

USER NAME = Lawrence.DeManche	DESIGNED - R. SHAH	REVISED - R. BORO 01-01-07	STATE OF ILLINOIS DEPARTMENT OF TRANSPORTATION	PAVEMENT PATCHING FOR HMA SURFACED PAVEMENT		F.A.U. RTE.	SECTION	COUNTY	TOTAL SHEETS	SHEET NO.
PLOT SCALE = 100.0000' / in.	DRAWN -	REVISED - R. BORO 09-04-07				1197	22-00059-00-RS	LAKE	25	19
PLOT DATE = 11/18/2022	CHECKED -	REVISED - K. ENG 10-27-08		SCALE: NONE		SHEET 1 OF 1 SHEETS	STA.	TO STA.	CONTRACT NO. 61K91	
	DATE - 10-25-94	REVISED - K. SMITH 11-18-22							ILLINOIS FED. AID PROJECT	



NOTES:

1. SIDE ROAD WITH A SPEED LIMIT OF 40 MPH (60 km/h) OR LESS AS SHOWN ON THE DRAWING AND AS DIRECTED BY THE ENGINEER:
 - a) ONE "ROAD CONSTRUCTION AHEAD" SIGN 36 x 36 (900x900) WITH A FLASHER MOUNTED ON IT APPROXIMATELY 200' (60 m) IN ADVANCE OF THE MAIN ROUTE.
 - b) THE CLOSED PORTION OF THE MAIN ROUTE SHALL BE PROTECTED BY BLOCKING WITH TYPE I, TYPE II OR TYPE III BARRICADES, 1/3 OF THE CROSS SECTION OF THE CLOSED PORTION.
2. SIDE ROAD WITH A SPEED LIMIT GREATER THAN 40 MPH (60 km/h) AS SHOWN ON THE DRAWING AND AS DIRECTED BY THE ENGINEER:
 - a) ONE "ROAD CONSTRUCTION AHEAD" SIGN 48 x 48 (1.2 m x 1.2 m) WITH A FLASHER MOUNTED ON IT APPROXIMATELY 500' (150 m) IN ADVANCE OF THE MAIN ROUTE.
 - b) BLOCKING WITH TYPE III BARRICADES, 1/2 OF THE CROSS SECTION OF THE CLOSED PORTION.
3. CONES MAY BE SUBSTITUTED FOR BARRICADES OR DRUMS AT HALF THE SPACING DURING DAY OPERATIONS. CONES SHALL BE A MINIMUM OF 28 (710) IN HEIGHT.
4. SIGNING AND THE WORK ZONE, A SINGLE HEADED ARROW (M6-1) SHALL BE USED IN LIEU OF THE DOUBLE HEADED ARROW (M6-4).

WHEN THE SIDE ROAD LIES BETWEEN THE BEGINNING OF THE MAINLINE SIGNING AND THE WORK ZONE, A SINGLE HEADED ARROW (M6-1) SHALL BE USED IN LIEU OF THE DOUBLE HEADED ARROW (M6-4).
5. WHEN WORK IS BEING PERFORMED ON A SIDE ROAD OR DRIVEWAY, FOLLOW THE APPLICABLE STANDARD(S). THE DIRECTIONAL ARROW (M6-1 OR M6-4) SHALL BE COVERED OR REMOVED WHEN NO LONGER CONSISTENT WITH THE TRAFFIC CONTROL SET-UP.
6. ADVANCE WARNING SIGNS ARE TO BE OMITTED ON DRIVEWAYS UNLESS OTHERWISE SPECIFIED IN THE PLANS OR BY THE ENGINEER.
7. THE TRAFFIC CONTROL AND PROTECTION FOR SIDE ROADS, INTERSECTIONS, AND DRIVEWAYS SHALL BE INCLUDED IN THE COST OF SPECIFIED TRAFFIC CONTROL STANDARDS OR ITEMS.

All dimensions are in inches (millimeters) unless otherwise shown.

MODEL: Default
FILE: \\nwr1c-pw-bentley.com\pww1c\dot\Documents\DOT_Offices\Di\hrct_1\Projects\Di\H502732\ACAD\DATA\CAD\Sheet\TC10.dgn

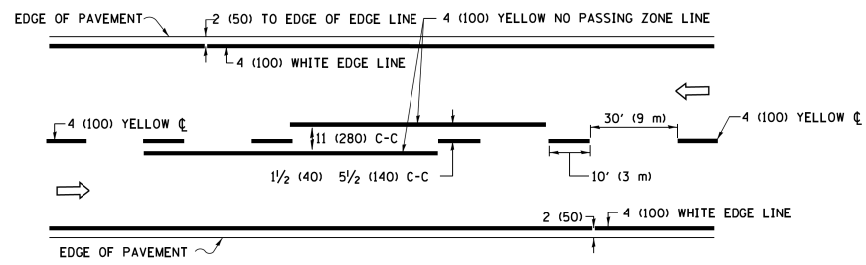
USER NAME = Lawrence,DeManche	DESIGNED - L.H.A.	REVISED - T. RAMMACHER 01-06-00
	DRAWN -	REVISED - A. SCHUETZE 07-01-13
PLOT SCALE = 100.0000' / in.	CHECKED -	REVISED - A. SCHUETZE 09-15-16
PLOT DATE = 5/3/2024	DATE - 06-89	REVISED - D. SENDERAK 05-03-24

**STATE OF ILLINOIS
DEPARTMENT OF TRANSPORTATION**

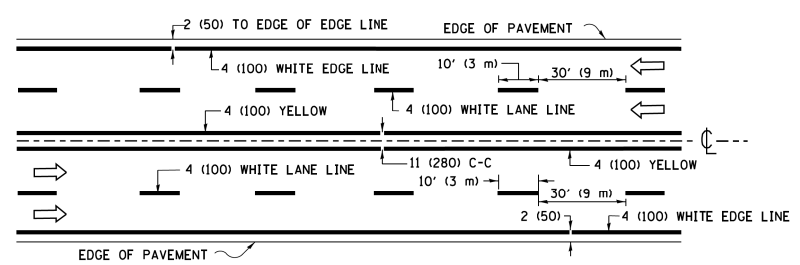
**TRAFFIC CONTROL AND PROTECTION FOR
SIDE ROADS, INTERSECTIONS, AND DRIVEWAYS**

SCALE: NONE SHEET 1 OF 1 SHEETS STA. TO STA.

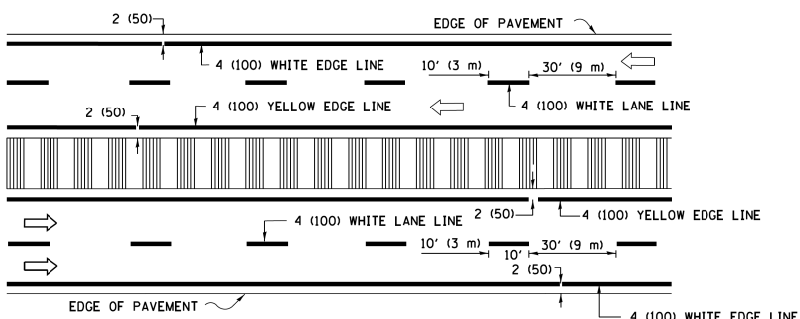
F.A.U. RTE.	SECTION	COUNTY	TOTAL SHEETS	SHEET NO.
1197	22-00059-00-RS	LAKE	25	22
TC-10			CONTRACT NO. 61K91	
ILLINOIS FED. AID PROJECT				



2-LANE ROADWAY

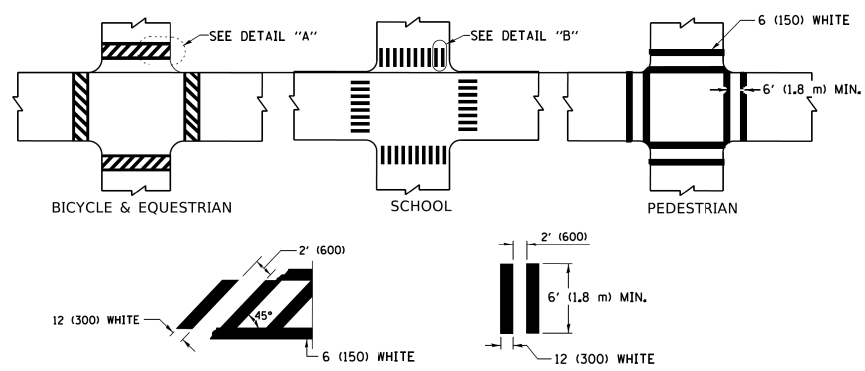


MULTI-LANE UNDIVIDED



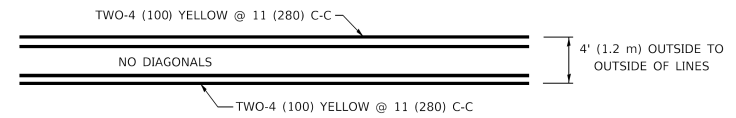
MULTI-LANE DIVIDED WITH MEDIAN

TYPICAL LANE AND EDGE LINE MARKING

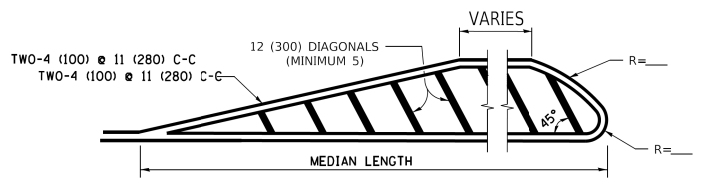


TYPICAL CROSSWALK MARKING

* MARKINGS SHALL BE INSTALLED PARALLEL TO THE CENTERLINE OF THE ROAD WHICH IT CROSSES

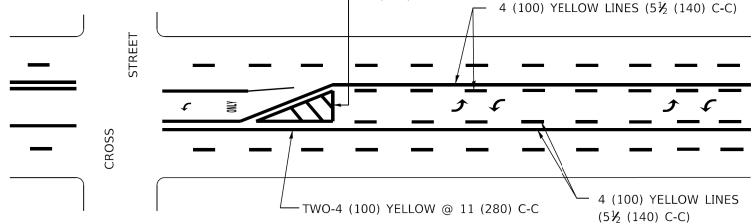


4' (1.2 m) WIDE MEDIANS ONLY



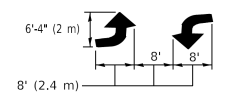
MEDIANS OVER 4' (1.2 m) WIDE

DIAGONAL LINE SPACING: 50' (15 m) C-C (LESS THAN 30MPH (50 km/h))
75' (25 m) C-C 30MPH (50 km/h) TO 45MPH (70 km/h)
150' (45 m) C-C (MORE THAN 45MPH (70 km/h))



**MEDIAN WITH TWO-WAY LEFT TURN LANE
TYPICAL PAINTED MEDIAN MARKING**

A MINIMUM OF TWO PAIRS OF TURN ARROWS SHALL BE USED, WHITE IN COLOR. ADDITIONAL PAIRS SHALL BE PLACED AT 200' (60 m) TO 300' (90 m) INTERVALS.

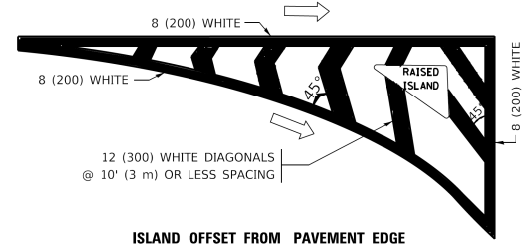


TYPICAL LEFT (OR RIGHT) TURN LANE

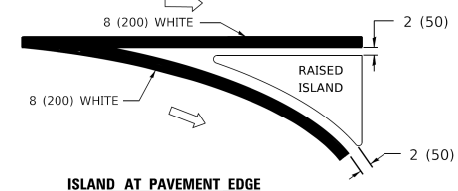
FULL SIZE LETTERS 8" (2.4 m) AND ARROWS SHALL BE USED.
AREA = 15.6 SQ. FT. (1.5 m²) ONLY AREA = 20.8 SQ. FT. (1.9 m²)

* TURN LANES IN EXCESS OF 400' (120 m) IN LENGTH MAY HAVE AN ADDITIONAL SET OF ARROW - "ONLY" INSTALLED MIDWAY BETWEEN THE OTHER TWO SETS OF ARROW - "ONLY".

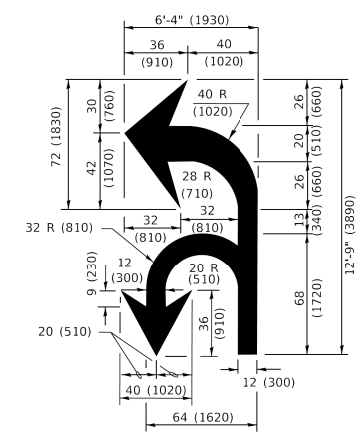
TYPICAL TURN LANE MARKING



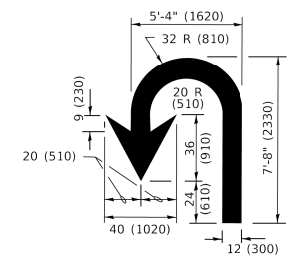
ISLAND OFFSET FROM PAVEMENT EDGE



**ISLAND AT PAVEMENT EDGE
TYPICAL ISLAND MARKING**



COMBINATION LEFT AND U-TURN



U-TURN

LANE REDUCTION TRANSITION
* LANE REDUCTION ARROWS REQUIRED AT SPEEDS OF 45 MPH OR GREATER OR WHEN SPECIFIED IN PLANS.

D(FT)	SPEED LIMIT
345	30
425	35
500	40
580	45
665	50
750	55

TYPE OF MARKING	WIDTH OF LINE	PATTERN	COLOR	SPACING / REMARKS
CENTERLINE ON 2 LANE PAVEMENT	4 (100)	SKIP-DASH	YELLOW	10' (3 m) LINE WITH 30' (9 m) SPACE
CENTERLINE ON MULTI-LANE UNDIVIDED PAVEMENT	2 @ 4 (100)	SOLID	YELLOW	11 (280) C-C
NO PASSING ZONE LINES: FOR ONE DIRECTION FOR BOTH DIRECTIONS	4 (100) 2 @ 4 (100)	SOLID SOLID	YELLOW YELLOW	5 1/2 (140) C-C FROM SKIP-DASH CENTERLINE 11 (280) C-C OMIT SKIP-DASH CENTERLINE BETWEEN
LANE LINES	4 (100) 5 (125) ON FREEWAYS	SKIP-DASH SKIP-DASH	WHITE WHITE	10' (3 m) LINE WITH 30' (9 m) SPACE
DOTTED LINES (EXTENSIONS OF CENTER, LANE OR TURN LANE MARKINGS)	SAME AS LINE BEING EXTENDED	SKIP-DASH	SAME AS LINE BEING EXTENDED	2' (600) LINE WITH 6' (1.8 m) SPACE
EDGE LINES	4 (100)	SOLID	YELLOW-LEFT WHITE-RIGHT	OUTLINE MEDIANS IN YELLOW
TURN LANE MARKINGS	6 (150) LINE: FULL SIZE LETTERS & SYMBOLS (8' (2.4m))	SOLID	WHITE	SEE TYPICAL TURN LANE MARKING DETAIL
TWO WAY LEFT TURN MARKING	2 @ 4 (100) EACH DIRECTION 8' (2.4m) LEFT ARROW	SKIP-DASH AND SOLID IN PAIRS	YELLOW WHITE	10' (3 m) LINE WITH 30' (9 m) SPACE FOR SKIP-DASH; 5 1/2 (140) C-C BETWEEN SOLID LINE AND SKIP-DASH LINE SEE TYPICAL TWO-WAY LEFT TURN MARKING DETAIL
CROSSWALK LINES (PEDESTRIAN) A. DIAGONALS (BIKE & EQUESTRIAN) B. LONGITUDINAL BARS (SCHOOL)	2 @ 6 (150) 12 (300) @ 45° 12 (300) @ 90°	SOLID SOLID SOLID	WHITE WHITE WHITE	NOT LESS THAN 6' (1.8 m) APART 2' (600) APART 2' (600) APART SEE TYPICAL CROSSWALK MARKING DETAILS.
STOP LINES	24 (600)	SOLID	WHITE	PLACE 4' (1.2 m) IN ADVANCE OF AND PARALLEL TO CROSSWALK, IF PRESENT. OTHERWISE, PLACE AT DESIRED STOPPING POINT. PARALLEL TO CROSSROAD CENTERLINE, WHERE POSSIBLE.
PAINTED MEDIANS	2 @ 4 (100) WITH 12 (300) DIAGONALS @ 45° NO DIAGONALS USED FOR 4' (1.2 m) WIDE MEDIANS	SOLID	YELLOW: TWO WAY TRAFFIC WHITE: ONE WAY TRAFFIC	11 (280) C-C FOR THE DOUBLE LINE SEE TYPICAL PAINTED MEDIAN MARKING.
GORE MARKING AND CHANNELIZING LINES	8 (200) WITH 12 (300) DIAGONALS @ 45°	SOLID	WHITE	DIAGONALS: 15' (4.5 m) C-C (LESS THAN 30MPH (50 km/h)) 20' (6 m) C-C 30MPH (50 km/h) TO 45MPH (70 km/h) 30' (9 m) C-C (OVER 45MPH (70 km/h))
RAILROAD CROSSING	24 (600) TRANSVERSE LINES: "RR" IS 6' (1.8 m) LETTERS; 16 (400) LINE FOR "X"	SOLID	WHITE	SEE STATE STANDARD 780001 AREA OF: "R"=3.6 SQ. FT. (0.33 m ²) EACH "X"=54.0 SQ. FT. (5.0 m ²)
SHOULDER DIAGONALS (REQUIRED FOR SHOULDERS > 8')	12 (300) @ 45°	SOLID	WHITE - RIGHT YELLOW - LEFT	50' (15 m) C-C (LESS THAN 30MPH (50 km/h)) 75' (25 m) C-C (30 MPH (50 km/h) TO 45MPH (70 km/h)) 150' (45 m) C-C (OVER 45MPH (70 km/h))
U TURN ARROW	SEE DETAIL	SOLID	WHITE	16.3 SF
2 ARROW COMBINATION LEFT AND U TURN	SEE DETAIL	SOLID	WHITE	30.4 SF

FOR FURTHER DETAILS ON PAVEMENT MARKING REFER TO STANDARD SPECIFICATIONS FOR ROAD AND BRIDGE CONSTRUCTION AND STATE STANDARD 780001.

All dimensions are in inches (millimeters) unless otherwise shown.

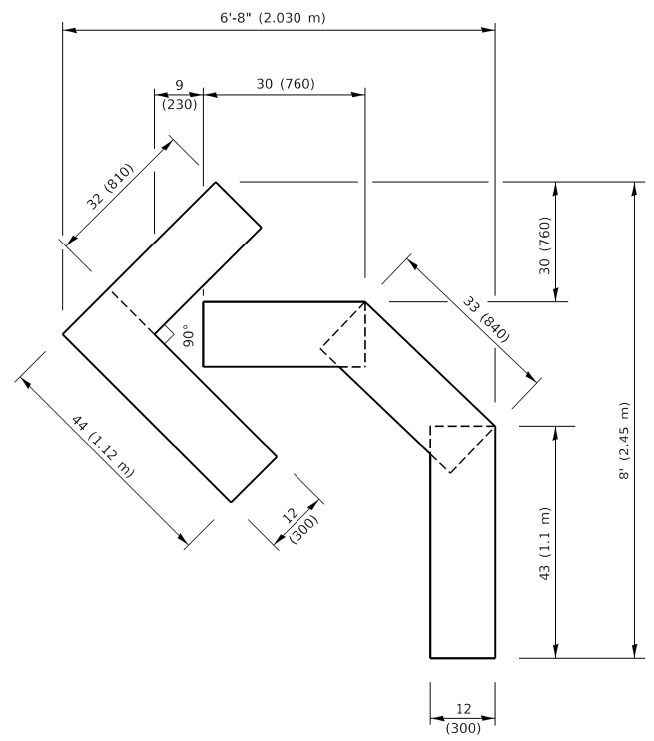
MODEL: Default
FILE: M:\110418\110418.DWG
PROJECT: 110418\110418.DWG
DATE: 11/14/18
DRAWN: JUCIUS
CHECKED: JUCIUS
DATE: 11/14/18

USER NAME = footemj	DESIGNED - EVERS	REVISED - C. JUCIUS 09-09-09
PLOT SCALE = 50.0000" / 1'	CHECKED -	REVISED - C. JUCIUS 07-01-13
PLOT DATE = 3/4/2019	DATE - 03-19-90	REVISED - C. JUCIUS 12-21-15
		REVISED - C. JUCIUS 04-12-16

**STATE OF ILLINOIS
DEPARTMENT OF TRANSPORTATION**

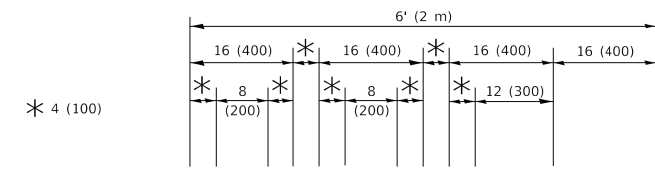
DISTRICT ONE		F.A.U. RTE.	SECTION	COUNTY	TOTAL SHEETS	SHEET NO.
TYPICAL PAVEMENT MARKINGS		1197	22-00059-00-RS	LAKE	25	23
SCALE: NONE		SHEET 1 OF 2 SHEETS		STA. TO STA.	CONTRACT NO. 61K9I	

ILLINOIS		FED. AID PROJECT	
----------	--	------------------	--



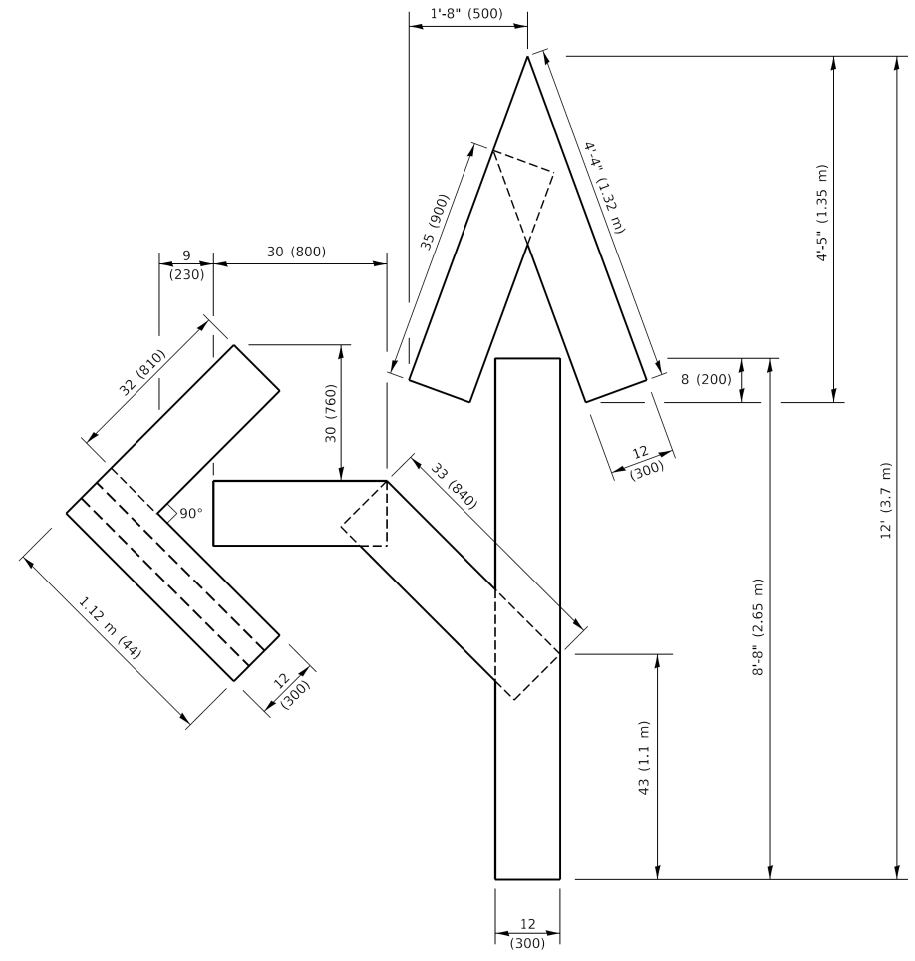
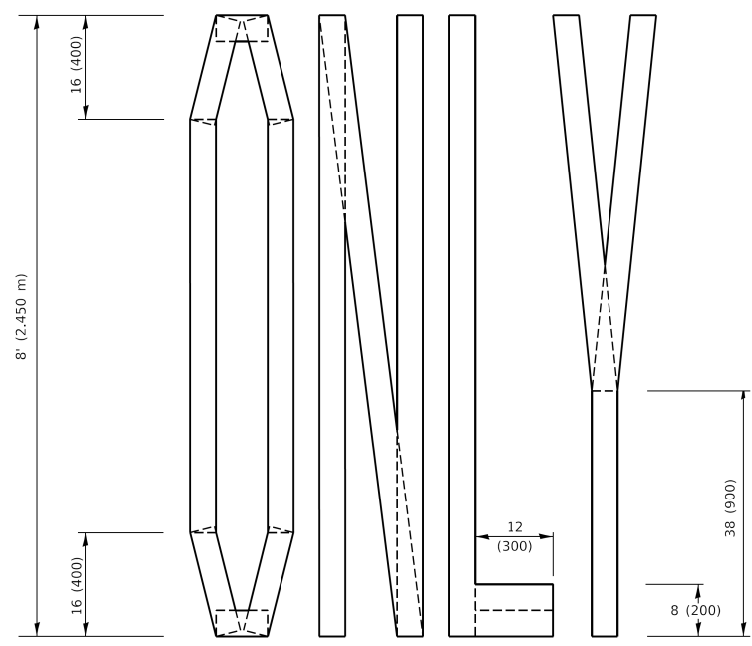
QUANTITY

4 (100) LINE = 45.5 ft. (13.9 m)
15.2 sq. ft. (1.41 sq. m)



QUANTITY

4 (100) LINE = 64.1 ft. (19.5 m)
21.4 sq. ft. (1.99 sq. m)

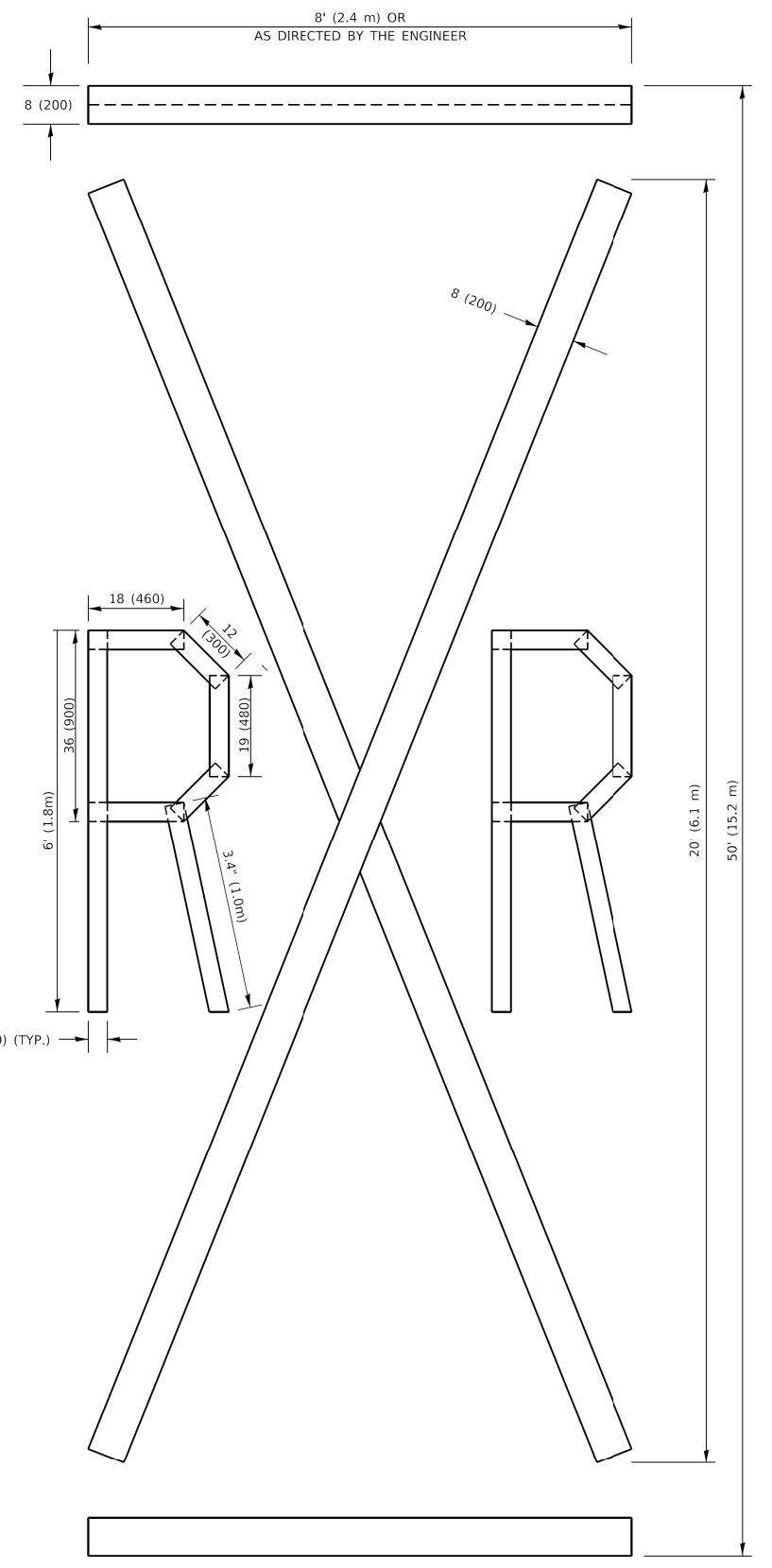


QUANTITY

4 (100) LINE = 82.5 ft. (25.1 m)
27.5 sq. ft. (2.53 sq. m)

NOTE:

ALL QUANTITIES OF PLACEMENT ARE REPRESENTED IN LINEAR FEET OF 4" LINES TO MATCH THE 4" TEMPORARY TAPE PAY ITEM AND REPRESENTS THE TOTAL QUANTITY OF 4" TAPE REQUIRED.



QUANTITY

4 (100) LINE = 225.9 ft. (68.9 m)
75.3 sq. ft. (6.99 sq. m)

All dimensions are in inches (millimeters) unless otherwise shown.

MODEL: Default
FILE NAME: I:\U084EB\DOT\Illinois.gov\PIWDOT\Documents\DOT_Offices\District_1\Projects\Dist5\S22-24\CAD\Drawn\CADsheets\16.dgn

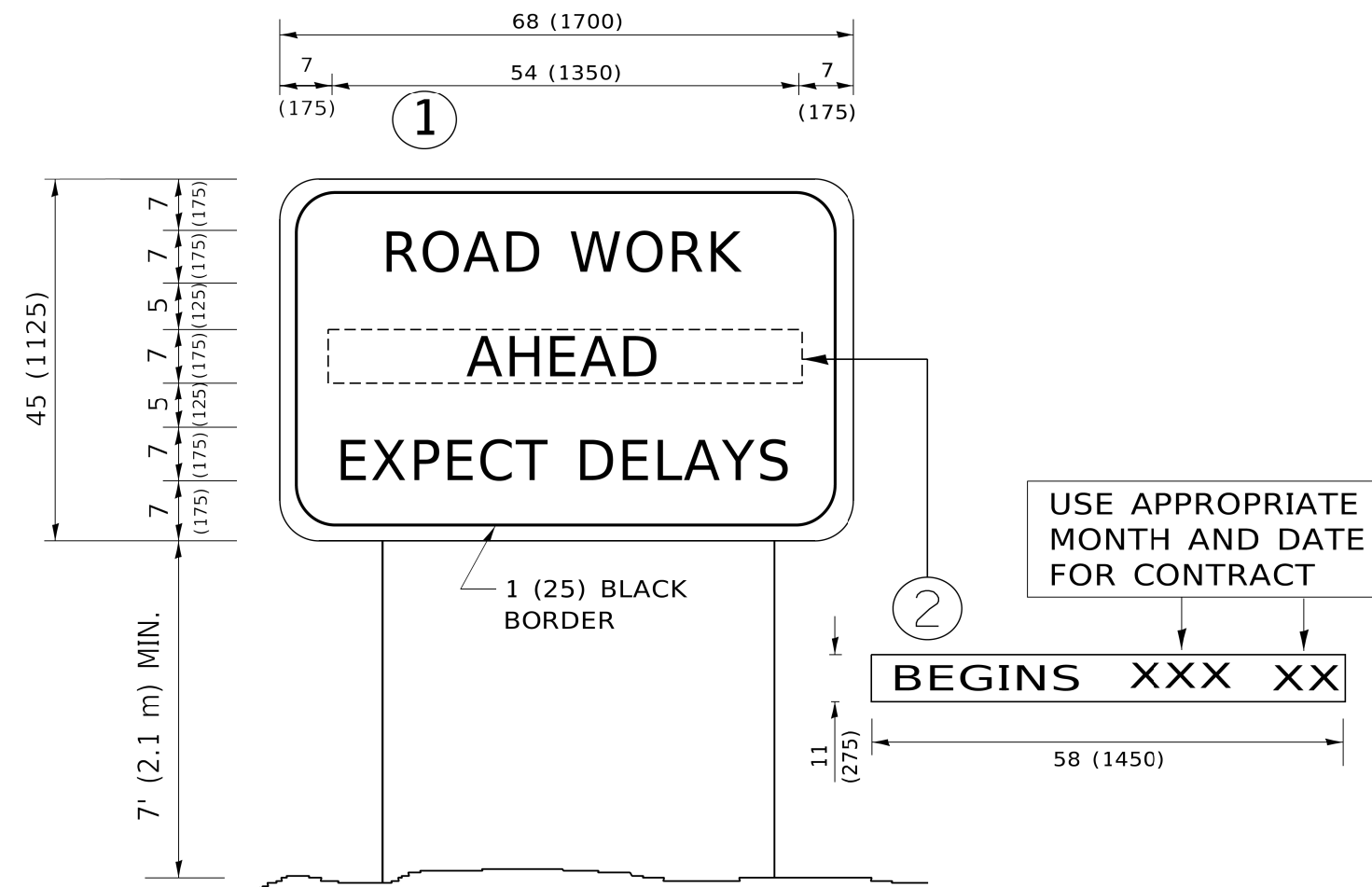
USER NAME = footemj	DESIGNED -	REVISED - T. RAMMACHER 03-02-98
PLOT SCALE = 50.0068" / in.	DRAWN -	REVISED - E. GOMEZ 08-28-00
PLOT DATE = 3/4/2019	CHECKED -	REVISED - E. GOMEZ 08-28-00
	DATE - 09-18-94	REVISED - A. SCHUETZE 09-15-16

**STATE OF ILLINOIS
DEPARTMENT OF TRANSPORTATION**

SHORT TERM PAVEMENT MARKING LETTERS AND SYMBOLS

SCALE: NONE SHEET 1 OF 1 SHEETS STA. TO STA.

F.A.U. RTE.	SECTION	COUNTY	TOTAL SHEETS	SHEET NO.
1197	22-00059-00-RS	LAKE	25	24
TC-16		CONTRACT NO. 61K91		
ILLINOIS FED. AID PROJECT				



NOTES:

1. USE BLACK LETTERING ON ORANGE BACKGROUND.
2. ERECT SIGNS IN ADVANCE OF THE LOCATION FOR THE "ROAD CONSTRUCTION AHEAD" SIGN AT LOCATIONS AS DIRECTED BY THE ENGINEER.
3. ERECT SIGN ① WITH INSTALLED PANEL ② ONE WEEK PRIOR TO THE START OF CONSTRUCTION.
4. REMOVE PANEL ② SOON AFTER THE START OF CONSTRUCTION.
5. SEE SPECIAL PROVISION FOR "TEMPORARY INFORMATION SIGNING" FOR ADDITIONAL INFORMATION.
6. ONE SIGN ASSEMBLY EQUALS 25.70 SQ. FT. (2.3 SQ. M.)
7. SHALL BE PAID FOR AS TEMPORARY INFORMATION SIGNING.

ALL DIMENSIONS ARE IN INCHES (MILLIMETERS) UNLESS OTHERWISE SHOWN.

MODEL: Default
 FILE: \\mchc-pw\ill084\FEB\NTEC\Illinois.gov-PWIDOT\Documents\DOT_Offices\District_1\Projects\DUH\S22\23\CAD\Drawn\CAD\sheet122.dgn

USER NAME = footemj	DESIGNED -	REVISED - R. MIRS 09-15-97
	DRAWN -	REVISED - R. MIRS 12-11-97
PLOT SCALE = 50.0000 "/td> <td>CHECKED -</td> <td>REVISED - T. RAMMACHER 02-02-99</td>	CHECKED -	REVISED - T. RAMMACHER 02-02-99
PLOT DATE = 3/4/2019	DATE -	REVISED - C. JUCIUS 01-31-07

**STATE OF ILLINOIS
DEPARTMENT OF TRANSPORTATION**

**ARTERIAL ROAD
INFORMATION SIGN**

SCALE: NONE SHEET 1 OF 1 SHEETS STA. TO STA.

F.A.U. RTE.	SECTION	COUNTY	TOTAL SHEETS	SHEET NO.
1197	22-00059-00-RS	LAKE	25	25
TC-22		CONTRACT NO. 61K91		
ILLINOIS FED. AID PROJECT				