

F.A.U. RTE.	SECTION	COUNTY	TOTAL SHEETS	SHEET NO.
4055	21-00073-00-RS	McHENRY	28	1
	1N8P(452)	ILLINOIS	CONTRACT NO. 61K97	

FOR INDEX OF SHEETS, SEE SHEET NO. 2

FOR INDEX OF HIGHWAY STANDARDS, SEE SHEET NO. 2

PROJECT IS LOCATED IN THE VILLAGE OF CARY

01-17-2025 LETTING ITEM 092

STATE OF ILLINOIS  
DEPARTMENT OF TRANSPORTATION

PLANS FOR PROPOSED  
FEDERAL AID HIGHWAY

F.A.U. 4055 (FIRST STREET)  
US ROUTE 14 TO THREE OAKS ROAD  
ROADWAY RESURFACING  
SECTION: 21-00073-00-RS  
PROJECT: 1N8P(452)  
VILLAGE OF CARY  
McHENRY COUNTY

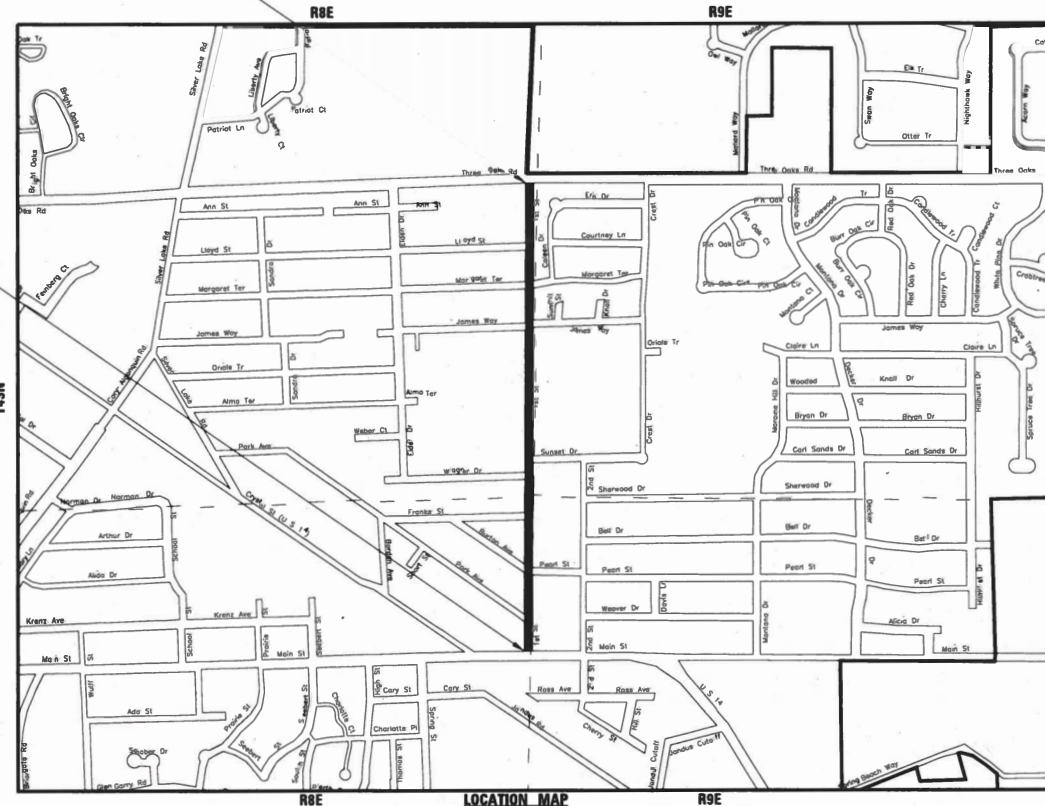
C-91-163-23  
LOCATION MAP

**TRAFFIC DATA**

FIRST STREET  
MAJOR COLLECTOR  
2021 ADT: 1,750  
POSTED SPEED: 30 MPH  
DESIGN SPEED: 30 MPH

FIRST STREET  
IMPROVEMENT ENDS  
STA 50+70

FIRST STREET  
IMPROVEMENT BEGINS  
STA 11+05



GROSS LENGTH = 3,965 FT. = 0.751 MILE  
NET LENGTH = 3,965 FT. = 0.751 MILE



LOCATION OF SECTION INDICATED THUS: - [Black Box] -

STATE OF ILLINOIS  
DEPARTMENT OF TRANSPORTATION  
DIVISION OF HIGHWAYS

APPROVED Kealan Noonan 10/30/2024  
VILLAGE OF CARY, DIRECTOR OF PUBLIC WORKS

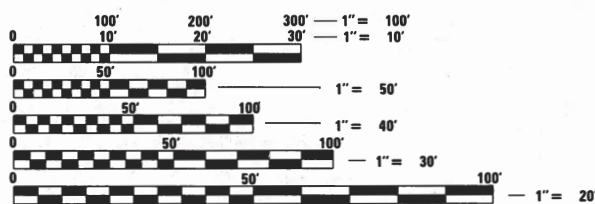
PASSED NOV 6, 2024  
[Signature]  
DISTRICT 1 ENGINEER OF LOCAL ROADS AND STREETS

RELEASING FOR BID  
BASED ON LIMITED  
REVIEW NOV 6, 2024  
[Signature]  
REGIONAL ENGINEER

PRINTED BY THE AUTHORITY  
OF THE STATE OF ILLINOIS

B&W PROJECT NO.: 211247 DATE: 10/30/2024

**BAXTER & WOODMAN**  
Consulting Engineers



FULL SIZE PLANS HAVE BEEN PREPARED USING STANDARD  
ENGINEERING SCALES. REDUCED SIZED PLANS WILL NOT  
CONFORM TO STANDARD SCALES. IN MAKING MEASUREMENTS  
ON REDUCED PLANS, THE ABOVE SCALES MAY BE USED.

J.U.L.I.E.  
JOINT UTILITY LOCATION INFORMATION FOR EXCAVATION  
1-800-892-0123  
OR 811

CONTRACT NO. 61K97

FEDERAL AID PROGRAM ENGINEER: CARMEN E. RAMOS, P.E. 10/30/2024 7:15:13 AM

**INDEX OF SHEETS**

1	COVER
2	INDEX OF SHEETS, HIGHWAY STANDARDS, AND DISTRICT 1 DETAILS
3	GENERAL NOTES AND COMMITMENTS
4 - 8	SUMMARY OF QUANTITIES
9	TYPICAL SECTIONS
10 - 11	SCHEDULE OF QUANTITIES
12	ALIGNMENTS AND BENCHMARKS
13 - 16	ROADWAY PLAN
17	MISCELLANEOUS DETAILS
18 - 28	DISTRICT 1 DETAILS

**HIGHWAY STANDARDS**

000001-08	STANDARD SYMBOLS, ABBREVIATIONS AND PATTERNS
001006	DECIMAL OF AN INCH AND OF A FOOT
280001-07	TEMPORARY EROSION CONTROL SYSTEMS
424001-12	PERPENDICULAR CURB RAMPS FOR SIDEWALKS
424006-06	DIAGONAL CURB RAMPS FOR SIDEWALKS
424011-05	CORNER PARALLEL CURB RAMPS FOR SIDEWALKS
424016-06	MID-BLOCK CURB RAMPS FOR SIDEWALKS
424021-07	DEPRESSED CORNER FOR SIDEWALKS
424026-04	ENTRANCE/ALLEY PEDESTRIAN CROSSINGS
442201-03	CLASS C AND D PATCHES
602001-02	CATCH BASIN TYPE A
602006-04	CATCH BASIN TYPE B
602301-04	INLET - TYPE A
604001-05	FRAME AND LIDS TYPE 1
604056-04	FRAME AND GRATE TYPE 11V
606001-08	CONCRETE CURB TYPE B AND COMBINATION CONCRETE CURB AND GUTTER
701001-02	OFF-RD OPERATIONS, 2L, 2W, MORE THAN 15' (4.5 m) AWAY
701006-05	OFF-RD OPERATIONS, 2L, 2W, 15' (4.5 m) TO 24" (600 mm) FROM PAVEMENT EDGE
701011-04	OFF-RD MOVING OPERATIONS, 2L, 2W, DAY ONLY
701301-04	LANE CLOSURE, 2L, 2W, SHORT TIME OPERATIONS
701311-03	LANE CLOSURE 2L, 2W MOVING OPERATIONS - DAY ONLY
701427-05	LANE CLOSURE, MULTILANE, INTERMITTENT OR MOVING OPER., FOR SPEEDS ≤ 40 MPH
701501-06	URBAN LANE CLOSURE, 2L, 2W, UNDIVIDED
701701-10	URBAN LANE CLOSURE, MULTILANE INTERSECTION
701801-06	SIDEWALK, CORNER OR CROSSWALK CLOSURE
701901-10	TRAFFIC CONTROL DEVICES
720001-01	SIGN PANEL MOUNTING DETAILS
720006-04	SIGN PANEL ERECTION DETAILS
720011-01	METAL POSTS FOR SIGNS, MARKERS & DELINEATORS
728001-01	TELESCOPING STEEL SIGN SUPPORT

**DISTRICT ONE DETAILS**

BD-01	DRIVEWAY DETAILS - DISTANCE BETWEEN R.O.W. AND FACE OF CURB & EDGE OF SHOULDER ≥15' (4.5m)
BD-08	DETAILS FOR FRAMES AND LIDS ADJUSTMENT WITH MILLING
BD-22	PAVEMENT PATCHING FOR HMA SURFACED PAVEMENT
BD-24	CURB OR CURB AND GUTTER REMOVAL AND REPLACEMENT
BD-32	BUTT JOINT AND HMA TAPER DETAILS
TC-10	TRAFFIC CONTROL AND PROTECTION FOR SIDE ROADS, INTERSECTIONS, AND DRIVEWAYS
TC-13	DISTRICT ONE TYPICAL PAVEMENT MARKINGS
TC-16	SHORT TERM PAVEMENT MARKING LETTERS AND SYMBOLS
TC-22	ARTERIAL ROAD INFORMATION SIGN
TC-26	DRIVEWAY ENTRANCE SIGNING
TS-07	DISTRICT 1 - DETECTOR LOOP INSTALLATION DETAILS FOR ROADWAY RESURFACING

STATE OF ILLINOIS - PROFESSIONAL DESIGN FIRM  
 LICENSE NO. - 184-001121 - EXPIRES 4/30/2025  
 rvargas 11/22/2024 6:50:46 AM  
 FILE NAME: P:\CARV\211247-First Street Phase 1\CAD\Sheets\211247\_SHT-GenNotes.dgn

	USER NAME = rvargas	DESIGNED - MH	REVISED -
		DRAWN - KAR	REVISED -
	PLOT SCALE = 20.0000 ' / in.	CHECKED - JCC	REVISED -
	PLOT DATE = 11/22/2024	DATE - 11/21/2024	FILE - 211247_SHT-GenNotes.dgn

STATE OF ILLINOIS  
 DEPARTMENT OF TRANSPORTATION

**INDEX OF SHEETS, HIGHWAY STANDARDS,  
 AND DISTRICT 1 DETAILS**

SCALE: NTS SHEET 1 OF 2 SHEETS STA. TO STA.

F.A.U. RTE.	SECTION	COUNTY	TOTAL SHEETS	SHEET NO.
4055	21-00073-00-R5	McHENRY	28	2
CONTRACT NO. 61K97				
ILLINOIS		FED. AID PROJECT 1N8P(452)		

**GENERAL NOTES**

- ALL CONSTRUCTION SHALL BE DONE IN ACCORDANCE WITH THE DETAILS IN THE PLANS, THE SPECIAL PROVISIONS INCLUDED IN THE CONTRACT DOCUMENTS, AND FOLLOWING STATE OF ILLINOIS SPECIFICATIONS: "THE STANDARD SPECIFICATIONS FOR ROAD AND BRIDGE CONSTRUCTION ADOPTED JANUARY 1, 2022" (REFERRED TO AS THE "STANDARD SPECIFICATIONS"), THE "SUPPLEMENTAL SPECIFICATIONS AND RECURRING SPECIAL PROVISIONS ADOPTED JANUARY 1, 2025", THE "MANUAL ON UNIFORM TRAFFIC CONTROL DEVICES FOR STREETS AND HIGHWAYS", THE "MANUAL OF TEST PROCEDURES FOR MATERIALS" AND THE "STANDARD SPECIFICATIONS FOR WATER AND SEWER MAIN CONSTRUCTION IN ILLINOIS".
- THE CONTRACTOR SHALL CONTACT KALPANA KANNAN-HOSADURGA, THE DISTRICT ONE TRAFFIC CONTROL SUPERVISOR, AT KALPANA.KANNAN-HOSADURGA@ILLINOIS.GOV, A MINIMUM OF 72 HOURS IN ADVANCE OF BEGINNING WORK.
- UTILITY LOCATIONS HAVE NOT BEEN SHOWN ON THESE PLANS. THE CONTRACTOR SHALL BE RESPONSIBLE FOR THE PROTECTION OF ALL UNDERGROUND OR SURFACE UTILITIES, INCLUDING SPRINKLER SYSTEMS, EVEN THOUGH THEY MAY NOT BE SHOWN ON THE PLANS.
- THE CONTRACTOR SHALL NOTIFY THE VILLAGE PUBLIC WORKS ADMINISTRATOR AT LEAST 48 HOURS IN ADVANCE OF BEGINNING WORK TO OBTAIN VILLAGE UTILITY LOCATIONS.
- THE CONTRACTOR MAY OBTAIN MUNICIPAL WATER IN BULK, AT NO CHARGE, AS LONG AS THERE IS NOT A "WATERING BAN" IN EFFECT. THE INDISCRIMINATE USE OF FIRE HYDRANTS IS STRICTLY PROHIBITED. WATER FOR CONSTRUCTION SHALL BE METERED OR OTHERWISE ACCOUNTED FOR AND A DAILY LOG MAINTAINED. THE CONTRACTOR SHALL PROVIDE THE WATER TRUCK AND DRIVER REQUIRED TO OBTAIN AND TRANSPORT THIS WATER. THE VILLAGE RESERVES THE RIGHT TO RESTRICT OR REFUSE THE USE OF VILLAGE WATER IF DEEMED NECESSARY.
- PORTLAND CEMENT CONCRETE SIDEWALK SHALL BE THICKENED TO 6-INCHES AT LOCATIONS WHERE THE SIDEWALK CROSSES PRIVATE DRIVEWAYS, AND TO 8-INCHES WHERE THE SIDEWALK CROSSES COMMERCIAL DRIVEWAYS. TRANSVERSE EXPANSION JOINTS 3/4" SHALL BE PLACED EVERY 50 FEET OR AS DETERMINED BY THE ENGINEER. TRANSVERSE CONTRACTION JOINTS SHALL BE PLACED EVERY 5-FEET.
- DETECTABLE WARNINGS SHALL BE CONSTRUCTED WITH THE INSTALLATION OF AN ADA-COMPLIANT CAST-IN-PLACE COMPOSITE 24"x48" MINIMUM NOMINAL SIZE PANEL AS MANUFACTURED BY ARMOR-TILE, ADA SOLUTIONS, INC., OR TUFTILE. THE DOMES LOCATED ON THE PANEL SHALL PARALLEL THE PAVEMENT CROSS WALK, WITH THE CLOSEST EDGE LOCATED AT THE BACK OF CURB, OR AS REQUIRED FOR COMPLIANCE WITH THE LATEST PROWAG. THE CONTRASTING PANEL COLOR SHALL BE SELECTED BY THE VILLAGE. INSTALLATION SHALL OCCUR IN ACCORDANCE WITH THE MANUFACTURER'S RECOMMENDATIONS.
- ALL POSTS, RAILROAD TIES, AND DECORATIVE TIMBER IN CONFLICT WITH THE PROPOSED IMPROVEMENTS SHALL BE REMOVED AND RELOCATED AS DETERMINED BY THE ENGINEER AT THE TIME OF CONSTRUCTION. EVERY EFFORT SHALL BE MADE BY THE CONTRACTOR WHEN REMOVING THESE ITEMS TO PRESERVE THEM FROM HARM. ITEMS NOT RELOCATED SHALL BE PROPERLY DISPOSED OF BY THE CONTRACTOR.
- THE CONTRACTOR WILL BE RESPONSIBLE FOR BACKFILLING STONE ALONG FRONT OF CURB TO THE TOP OF PAVEMENT ELEVATIONS IN THE CASE WHERE THE CURB REPLACEMENT IS PERFORMED PRIOR TO PAVEMENT REMOVAL.
- CURB AND GUTTER IS TO BE DEPRESSED AT DRIVEWAYS.
- THE CONTRACTOR SHALL TAKE PRECAUTIONS BY PRESERVING EXISTING TREES WITHIN THE RIGHT OF WAY. IF ANY DAMAGE OCCURS, TREES SHALL BE REPLACED IN KIND PER ARTICLE 201.07 REGARDING THE REPAIR OR REPLACEMENT OF EXISTING PLANT MATERIAL REQUIREMENTS STATED HEREIN.
- ALL TREE PROTECTION, PRUNING, AND ROOT PRUNING SHALL BE COMPLETED BEFORE CONSTRUCTION OPERATIONS COMMENCE IN ANY AREA. AT NO TIME SHALL THE CONTRACTOR PRUNE OR REMOVE ANY TREES UNLESS SPECIFICALLY DIRECTED BY THE ENGINEER.

**MAINTENANCE OF TRAFFIC AND CONSTRUCTION STAGING NOTES**

- IT WILL BE THE CONTRACTOR'S RESPONSIBILITY TO NOTIFY THE ENGINEER, RESIDENTS AND THE VILLAGE WHEN ACCESS TO DRIVEWAYS WILL BE TEMPORARILY CLOSED OR ON-STREET PARKING WILL BE RESTRICTED DUE TO CONSTRUCTION ACTIVITIES. THE CONTRACTOR SHALL DISTRIBUTE NOTICES PROVIDED BY THE VILLAGE TO RESIDENTS AT LEAST 24 HOURS PRIOR TO PLANNED CLOSURES AND RESTRICTIONS. EVERY EFFORT SHALL BE MADE TO NOTIFY RESIDENTS INCLUDING KNOCKING ON DOORS WHEN DRIVEWAYS ARE ABOUT TO BE CLOSED.
- THE CONTRACTOR SHALL MAINTAIN A MINIMUM 10' CLEAR WIDTH ROADWAY FOR EACH DIRECTION. INGRESS AND EGRESS TO DRIVEWAYS AND SIDE STREETS SHALL BE MAINTAINED.
- RESTRICTIONS TO ON-STREET PARKING WILL BE ALLOWED ONLY ON ONE SIDE OF THE STREET AT A TIME UNLESS OTHERWISE APPROVED BY THE ENGINEER.
- CURB AND GUTTER MUST BE REMOVED AND REPLACED PRIOR TO MILLING OF EXISTING ASPHALT PAVEMENT.
- BARRICADES AND DRUMS SHALL BE EQUIPPED WITH MONO-DIRECTIONAL STEADY BURN LIGHTS EXCEPT WHEN FLASHING LIGHTS ARE SPECIFIED BY THE HIGHWAY STANDARDS OR DETAIL DRAWINGS. BARRICADES AND DRUMS SHALL BE PLACED AT NO GREATER THAN 50' INTERVALS ALONG THE PROPOSED WORK ZONE AND 25' WITHIN TAPERED SECTIONS OR AS DIRECTED BY THE ENGINEER.
- EMERGENCY VEHICLE ACCESS SHALL BE MAINTAINED AT ALL TIMES. ANY SIGNIFICANT CHANGE IN TRAFFIC CONTROL SHALL HAVE PRIOR APPROVAL BY THE ENGINEER. THE CONTRACTOR SHALL PROVIDE A MINIMUM OF THREE (3) DAYS NOTICE IN ADVANCE OF CONSTRUCTION ACTIVITIES WHICH IMPACT EMERGENCY SERVICES.
- THE CONTRACTOR SHALL PROVIDE TEMPORARY ACCESS TO DRIVEWAYS AND SIDE ROADS DURING CONSTRUCTION, UTILIZING PAY ITEMS TEMPORARY ACCESS (PRIVATE ENTRANCE) AND TEMPORARY ACCESS (COMMERCIAL ENTRANCE).
- ALL COMMERCIAL PROPERTIES SHALL BE PROVIDED AT LEAST ONE INGRESS AND ONE EGRESS EITHER ON THE MAINLINE OR A SIDE STREET AT ALL TIMES. THE CONTRACTOR SHALL COORDINATE DRIVEWAY CLOSURES/MODIFICATIONS WITH THE LOCAL BUSINESSES AND THE ENGINEER. COMMERCIAL DRIVEWAYS WHICH CANNOT BE CLOSED, AS DETERMINED BY THE ENGINEER, SHALL BE CONSTRUCTED IN STAGES OR WILL BE CONSTRUCTED WHEN BUSINESSES ARE NOT OPEN USING HIGH EARLY STRENGTH CONCRETE.
- THE CONTRACTOR SHALL SUBMIT A PREPLANNED SEQUENCE OF WORK AT THE PRECONSTRUCTION CONFERENCE FOR REVIEW AND APPROVAL. WORK SHALL BE SCHEDULED TO MINIMIZE INCONVENIENCE TO RESIDENTS AND BUSINESSES AND TO MAINTAIN A REASONABLE LEVEL OF CONSTRUCTION EFFICIENCY. THE ENGINEER RESERVES THE RIGHT TO RESTRICT WORK ON ANY ROADWAY SEGMENT IF CONSTRUCTION OPERATIONS ON A PREVIOUS SEGMENT ARE UNACCEPTABLE; TRAFFIC CONTROL OPERATIONS BECOME UNACCEPTABLE; OR AN EROSION CONTROL DEFICIENCY EXISTS.
- ACCESS FOR LOCAL TRAFFIC, MAIL SERVICE, AND GARBAGE SERVICE SHALL BE MAINTAINED AT ALL TIMES.
- THE CONTRACTOR WILL ONLY BE ALLOWED TO REMOVE AND REPLACE CURB AND GUTTER ON ONE SIDE OF THE ROAD AT A TIME TO MINIMIZE CONGESTION. REPLACEMENT MUST BE COMPLETE ON ONE SIDE OF THE ROAD BEFORE THE CONTRACTOR IS ALLOWED TO BEGIN REMOVING CURB AND GUTTER ON THE OTHER SIDE OF THE ROAD.
- RESIDENTS SHALL HAVE ACCESS TO THEIR DRIVEWAYS AT THE END OF EACH DAY (EXCEPT DURING CONCRETE CURING TIME).
- ALL STREETS SHALL BE OPEN TO TWO-WAY TRAFFIC AT THE END OF EACH DAY.
- ALL TRENCHES, HOLES, AND PITS SHALL BE FILLED OR COVERED WITH STEEL PLATES EXCEPT DURING ACTUAL CONSTRUCTION THERE IN.
- THE HMA BINDER COURSE SHALL BE INSTALLED WITHIN 10 DAYS OF HMA REMOVAL.

STATE OF ILLINOIS - PROFESSIONAL DESIGN FIRM  
 LICENSE NO. - 184-001121 - EXPIRES 4/30/2025  
 FILE NAME: P:\CARV211247-First Street Phase\ICAD\Sheets\211247\_SHT-GenNotes.dgn  
 FILE DATE: 11/11/2024 10:28:19 AM  
 FILE SIZE: 11/11/2024 10:28:19 AM  
 ...\\oldtdrv\pdf\BW\_Default.plt  
 ...CAD\plots\211247\_Pen\_PHz.tbl  
 P:\CARV211247-First Street Phase\ICAD\Sheets\211247\_SHT-GenNotes.dgn

	USER NAME = rvargas	DESIGNED - MH	REVISED -
	PLOT SCALE = 20.0000' / in.	CHECKED - JCC	REVISED -
	PLOT DATE = 11/11/2024	DATE - 10/30/2024	FILE - 211247_SHT-GenNotes.dgn

STATE OF ILLINOIS  
 DEPARTMENT OF TRANSPORTATION

<b>GENERAL NOTES AND COMMITMENTS</b>			
SCALE: NTS	SHEET 2 OF 2 SHEETS	STA.	TO STA.

F.A.U. RTE.	SECTION	COUNTY	TOTAL SHEETS	SHEET NO.
4055	21-00073-00-R5	McHENRY	28	3
CONTRACT NO. 61K97				
ILLINOIS FED. AID PROJECT 1N8P(452)				

STATE OF ILLINOIS - PROFESSIONAL DESIGN FIRM  
 LICENSE NO. - 184-001121 - EXPIRES 4/30/2025  
 11/11/2024 10:28:22 AM  
 FILE NAME: P:\CARV\211247-First Street Phase I\CAD\Sheets\211247\_SHT-SOQ.dgn



USER NAME = rvargas	DESIGNED - MH	REVISED -
	DRAWN - KAR	REVISED -
PLOT SCALE = 20.0000 ' / in.	CHECKED - JCC	REVISED -
PLOT DATE = 11/11/2024	DATE - 10/30/2024	FILE - 211247_SHT-SOQ.dgn

STATE OF ILLINOIS  
 DEPARTMENT OF TRANSPORTATION

SUMMARY OF QUANTITIES

SCALE: NTS SHEET 1 OF 5 SHEETS STA. TO STA.

F.A.U. RTE.	SECTION	COUNTY	TOTAL SHEETS	SHEET NO.
4055	21-00073-00-R5	McHENRY	28	4
CONTRACT NO. 61K97				
ILLINOIS FED. AID PROJECT 1N8P(452)				

CODE NO.	ITEM	UNIT	CONSTRUCTION CODE
			80% FED 20% STATE
			ROADWAY
			0005
			URBAN
20101100	TREE TRUNK PROTECTION	EACH	29
20101200	TREE ROOT FRUNING	EACH	29
20101350	TREE PRUNING (OVER 10 INCH DIAMETER)	EACH	11
20101700	SUPPLEMENTAL WATERING	UNIT	3
20200100	EARTH EXCAVATION	CU YD	10
20201200	REMOVAL AND DISPOSAL OF UNSUITABLE MATERIAL	CU YD	81
21001000	GEOTECHNICAL FABRIC FOR GROUND STABILIZATION	SQ YD	242
28000510	INLET FILTERS	EACH	26
30300001	AGGREGATE SUBGRADE IMPROVEMENT	CU YD	81
35101600	AGGREGATE BASE COURSE, TYPE B 4"	SQ YD	2,226
40600290	BITUMINOUS MATERIALS (TACK COAT)	POUND	10,868
40600370	LONGITUDINAL JOINT SEALANT	FOOT	3,965
40600400	MIXTURE FOR CRACKS, JOINTS, AND FLANGEWAYS	TON	3
40600982	HOT-MIX ASPHALT SURFACE REMOVAL - BUTT JOINT	SQ YD	165
40604060	HOT-MIX ASPHALT SURFACE COURSE, IL-9.5, MIX "D", N50	TON	1,578

\* INDICATES SPECIALTY ITEM

STATE OF ILLINOIS - PROFESSIONAL DESIGN FIRM  
 LICENSE NO. - 184-001121 - EXPIRES 4/30/2025  
 11/11/2024 10:28:23 AM  
 FILE NAME: P:\CARV\211247-First Street Phase I\CAD\Sheets\211247\_SHT-SOQ.dgn



USER NAME = rvargas	DESIGNED - MH	REVISED -
PLOT SCALE = 20.0000' / in.	CHECKED - JCC	REVISED -
PLOT DATE = 11/11/2024	DATE - 10/30/2024	FILE - 211247_SHT-SOQ.dgn

STATE OF ILLINOIS  
 DEPARTMENT OF TRANSPORTATION

SUMMARY OF QUANTITIES			
SCALE: NTS	SHEET 2 OF 5 SHEETS	STA.	TO STA.

F.A.U. RTE.	SECTION	COUNTY	TOTAL SHEETS	SHEET NO.
4055	21-00073-00-R5	McHENRY	28	5
CONTRACT NO. 61K97				
ILLINOIS FED. AID PROJECT 1N8P(452)				

CODE NO.	ITEM	UNIT	CONSTRUCTION CODE
			80% FED 20% STATE
			ROADWAY
			0005
			URBAN
40602978	HOT-MIX ASPHALT BINDER COURSE, IL- 9.5, N50	TON	1,353
42300200	PORTLAND CEMENT CONCRETE DRIVEWAY PAVEMENT, 6 INCH	SQ YD	54
42300400	PORTLAND CEMENT CONCRETE DRIVEWAY PAVEMENT, 8 INCH	SQ YD	138
42400200	PORTLAND CEMENT CONCRETE SIDEWALK 5 INCH	SQ FT	7,741
42400800	DETECTABLE WARNINGS	SQ FT	248
44000161	HOT-MIX ASPHALT SURFACE REMOVAL, 3"	SQ YD	16,100
44000200	DRIVEWAY PAVEMENT REMOVAL	SQ YD	400
44000500	COMBINATION CURB AND GUTTER REMOVAL	FOOT	7,842
44000600	SIDEWALK REMOVAL	SQ FT	7,993
44201713	CLASS D PATCHES, TYPE I, 6 INCH	SQ YD	604
44201717	CLASS D PATCHES, TYPE II, 6 INCH	SQ YD	604
44201721	CLASS D PATCHES, TYPE III, 6 INCH	SQ YD	604
44201723	CLASS D PATCHES, TYPE IV, 6 INCH	SQ YD	604
60300105	FRAMES AND GRATES TO BE ADJUSTED	EACH	30
60404800	FRAMES AND GRATES, TYPE 11	EACH	13

\* INDICATES SPECIALTY ITEM

STATE OF ILLINOIS - PROFESSIONAL DESIGN FIRM  
 LICENSE NO. - 184-001121 - EXPIRES 4/30/2025  
 rvargas 11/11/2024 10:28:24 AM  
 MODEL Default  
 FILE NAME: P:\CARRY\211247-First Street Phase ICAD\Sheets\211247\_SHT-SOQ.dgn



USER NAME = rvargas	DESIGNED - MH	REVISED -
	DRAWN - KAR	REVISED -
PLOT SCALE = 20.0000' / in.	CHECKED - JCC	REVISED -
PLOT DATE = 11/11/2024	DATE - 10/30/2024	FILE - 211247_SHT-SOQ.dgn

STATE OF ILLINOIS  
 DEPARTMENT OF TRANSPORTATION

SUMMARY OF QUANTITIES

SCALE: NTS SHEET 3 OF 5 SHEETS STA. TO STA.

F.A.U. RTE.	SECTION	COUNTY	TOTAL SHEETS	SHEET NO.
4055	21-00073-00-RS	MCHEMRY	28	6
CONTRACT NO. 61K97			ILLINOIS FED. AID PROJECT 1N8P(452)	

CODE NO.	ITEM	UNIT	CONSTRUCTION CODE
			80% FED 20% STATE
			ROADWAY
			0005
			URBAN
60406001	FRAMES AND LIDS, TYPE 1, ADA COMPLIANT, OPEN LID	EACH	1
60406100	FRAMES AND LIDS, TYPE 1, CLOSED LID	EACH	1
60603800	COMBINATION CONCRETE CURB AND GUTTER, TYPE B-6.12	FOOT	7,842
* 66901001	REGULATED SUBSTANCES PRE-CONSTRUCTION PLAN	L SUM	1
* 66901003	REGULATED SUBSTANCES FINAL CONSTRUCTION REPORT	L SUM	1
* 66901006	REGULATED SUBSTANCES MONITORING	CAL DA	10
67100100	MOBILIZATION	L SUM	1
70102620	TRAFFIC CONTROL AND PROTECTION, STANDARD 701501	L SUM	1
70102635	TRAFFIC CONTROL AND PROTECTION, STANDARD 701701	L SUM	1
70102640	TRAFFIC CONTROL AND PROTECTION, STANDARD 701801	L SUM	1
70300100	SHORT TERM PAVEMENT MARKING	FOOT	46,791
70300150	SHORT TERM PAVEMENT MARKING REMOVAL	SQ FT	15,597
70300211	TEMPORARY PAVEMENT MARKING LETTERS AND SYMBOLS - PAINT	SQ FT	2,243
70300221	TEMPORARY PAVEMENT MARKING - LINE 4" - PAINT	FOOT	13,211
70300231	TEMPORARY PAVEMENT MARKING - LINE 5" - PAINT	FOOT	4,494

\* INDICATES SPECIALTY ITEM

STATE OF ILLINOIS - PROFESSIONAL DESIGN FIRM  
 LICENSE NO. - 184-001121 - EXPIRES 4/30/2025  
 rvargas 11/11/2024 10:28:25 AM  
 FILE NAME: P:\CARV\211247-First Street Phase 1\CAD\Sheets\211247\_SHT-SOQ.dgn



USER NAME = rvargas	DESIGNED - MH	REVISED -
	DRAWN - KAR	REVISED -
PLOT SCALE = 20.0000' / in.	CHECKED - JCC	REVISED -
PLOT DATE = 11/11/2024	DATE - 10/30/2024	FILE - 211247_SHT-SOQ.dgn

STATE OF ILLINOIS  
 DEPARTMENT OF TRANSPORTATION

SUMMARY OF QUANTITIES			
SCALE: NTS	SHEET 4	OF 5 SHEETS	STA. TO STA.

F.A.U. RTE.	SECTION	COUNTY	TOTAL SHEETS	SHEET NO.
4055	21-00073-00-RS	McHENRY	28	7
ILLINOIS FED. AID PROJECT 1NB(452)			CONTRACT NO. 61K97	

CODE NO.	ITEM	UNIT	CONSTRUCTION CODE
			80% FED 20% STATE
			ROADWAY
			0005
			URBAN
70300241	TEMPORARY PAVEMENT MARKING - LINE 6" - PAINT	FOOT	388
70300251	TEMPORARY PAVEMENT MARKING - LINE 8" - PAINT	FOOT	297
70300261	TEMPORARY PAVEMENT MARKING - LINE 12" - PAINT	FOOT	1,015
70300281	TEMPORARY PAVEMENT MARKING - LINE 24" - PAINT	FOOT	112
* 72000100	SIGN PANEL - TYPE 1	SQ FT	174
* 72800100	TELESCOPING STEEL SIGN SUPPORT	FOOT	408
* 78000100	THERMOPLASTIC PAVEMENT MARKING - LETTERS AND SYMBOLS	SQ FT	2,243
* 78000200	THERMOPLASTIC PAVEMENT MARKING - LINE 4"	FOOT	13,211
* 78000300	THERMOPLASTIC PAVEMENT MARKING - LINE 5"	FOOT	4,494
* 78000400	THERMOPLASTIC PAVEMENT MARKING - LINE 6"	FOOT	388
* 78000500	THERMOPLASTIC PAVEMENT MARKING - LINE 8"	FOOT	297
* 78000600	THERMOPLASTIC PAVEMENT MARKING - LINE 12"	FOOT	1,015
* 78000650	THERMOPLASTIC PAVEMENT MARKING - LINE 24"	FOOT	112
* 89502385	REMOVE EXISTING CONCRETE FOUNDATION	EACH	2
* X1400326	RECTANGULAR RAPID FLASHING BEACON ASSEMBLY (COMPLETE)	EACH	2

\* INDICATES SPECIALTY ITEM

STATE OF ILLINOIS - PROFESSIONAL DESIGN FIRM  
 LICENSE NO. - 184-001121 - EXPIRES 4/30/2025  
 11/11/2024 10:28:26 AM  
 MODEL Default  
 FILE NAME: P:\CARYV\211247-First Street Phase 1\CAD\Sheets\211247\_SHT-SOQ.dgn

...\\pltdrv\p\pdf\BW\_Default.plt  
 ...\\CAD\Plots\211247\_Pen\_PHz.tbl  
 P:\CARYV\211247-First Street Phase 1\CAD\Sheets\211247\_SHT-SOQ.dgn



USER NAME = rvargas	DESIGNED - MH	REVISED -
	DRAWN - KAR	REVISED -
PLOT SCALE = 20.0000 ' / in.	CHECKED - JCC	REVISED -
PLOT DATE = 11/11/2024	DATE - 10/30/2024	FILE - 211247_SHT-SOQ.dgn

**STATE OF ILLINOIS  
 DEPARTMENT OF TRANSPORTATION**

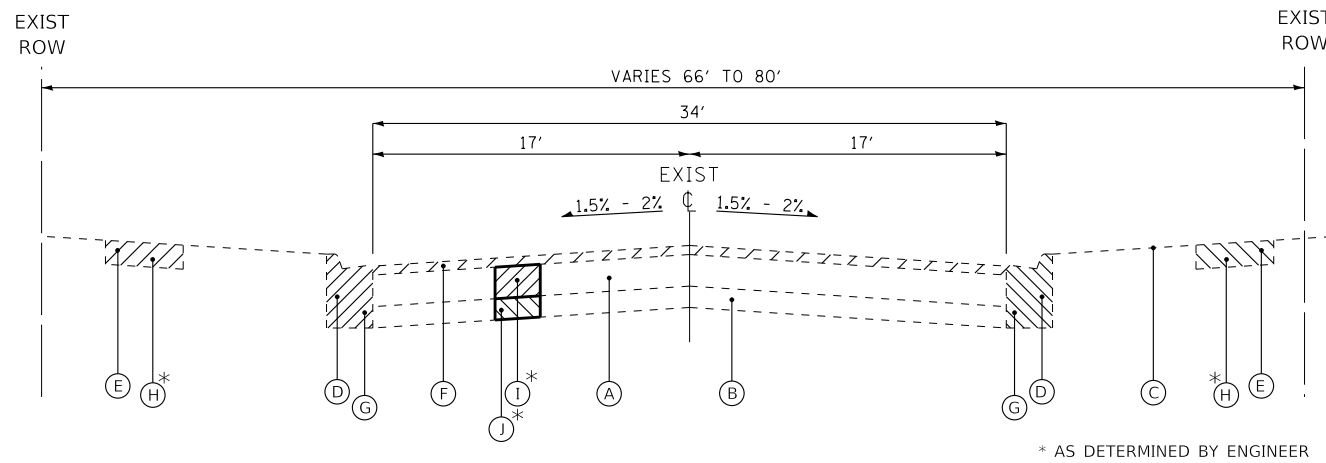
<b>SUMMARY OF QUANTITIES</b>			
SCALE: NTS	SHEET 5	OF 5 SHEETS	STA. TO STA.

F.A.U. RTE.	SECTION	COUNTY	TOTAL SHEETS	SHEET NO.
4055	21-00073-00-R5	McHENRY	28	8
			CONTRACT NO. 61K97	
ILLINOIS FED. AID PROJECT 1N8P(452)				

CODE NO.	ITEM	UNIT	CONSTRUCTION CODE
			80% FED 20% STATE
			ROADWAY
			0005
			URBAN
X4021000	TEMPORARY ACCESS (PRIVATE ENTRANCE)	EACH	13
X4022000	TEMPORARY ACCESS (COMMERCIAL ENTRANCE)	EACH	22
X6030310	FRAMES AND LIDS TO BE ADJUSTED (SPECIAL)	EACH	41
X6026624	VALVE BOXES TO BE ADJUSTED (SPECIAL)	EACH	3
X8860105	DETECTOR LOOP REPLACEMENT	FOOT	261
XX007278	PARKWAY RESTORATION	SQ YD	1,494
Z0004514	HOT-MIX ASPHALT DRIVEWAY PAVEMENT, 4"	SQ YD	74
Z0004522	HOT-MIX ASPHALT DRIVEWAY PAVEMENT, 6"	SQ YD	139
Z0019600	DUST CONTROL WATERING	UNIT	5
Z0030850	TEMPORARY INFORMATION SIGNING	SQ FT	227

\* INDICATES SPECIALTY ITEM

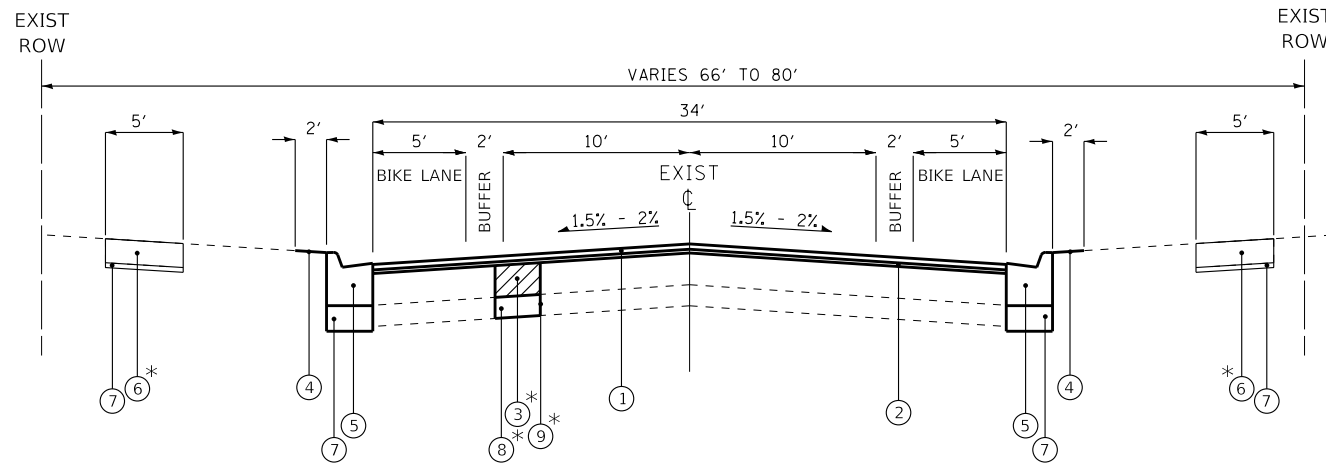




**EXISTING TYPICAL SECTION  
FIRST STREET**

STA 11+05 TO STA 50+70

\* AS DETERMINED BY ENGINEER



**PROPOSED TYPICAL SECTION  
FIRST STREET**

STA 11+05 TO STA 50+70

\* AS DETERMINED BY ENGINEER

\*EAST BIKE LANE AND BUFFER ZONE TO BE REPLACED WITH 7' PARKING LANE FROM STA 24+80 TO STA 29+65  
 \*\*WEST BIKE LANE AND BUFFER ZONE TO BE REPLACED WITH 7' PARKING LANE FROM STA 30+05 TO STA 36+01

**EXISTING LEGEND**

- (A) EXISTING HMA BINDER & SURFACE COURSE (3 - 10.25")
- (B) EXISTING AGGREGATE BASE COURSE (4.5 - 19")
- (C) GROUND SURFACE
- (D) EXISTING COMBINATION CURB AND GUTTER
- (E) EXISTING SIDEWALK
- (F) HOT-MIX ASPHALT SURFACE REMOVAL, 3"
- (G) COMBINATION CURB AND GUTTER REMOVAL
- (H) SIDEWALK REMOVAL
- (I) CLASS D PATCHES, 6"
- (J) REMOVAL AND DISPOSAL OF UNSUITABLE MATERIAL
- [Hatched Box] REMOVAL ITEM

**PROPOSED LEGEND**

- (1) HOT-MIX ASPHALT SURFACE COURSE, IL-9.5, MIX "D", N50 - 1 3/4"
- (2) HOT-MIX ASPHALT BINDER COURSE, IL-9.5, N50 - 1-1/2"
- (3) CLASS D PATCHES, 6"
- (4) PARKWAY RESTORATION
- (5) COMBINATION CONCRETE CURB AND GUTTER, TYPE B-6.12
- (6) PORTLAND CEMENT CONCRETE SIDEWALK 5 INCH
- (7) AGGREGATE BASE COURSE, TYPE B 4"
- (8) AGGREGATE SUBGRADE IMPROVEMENT
- (9) GEOTECHNICAL FABRIC FOR GROUND STABILIZATION

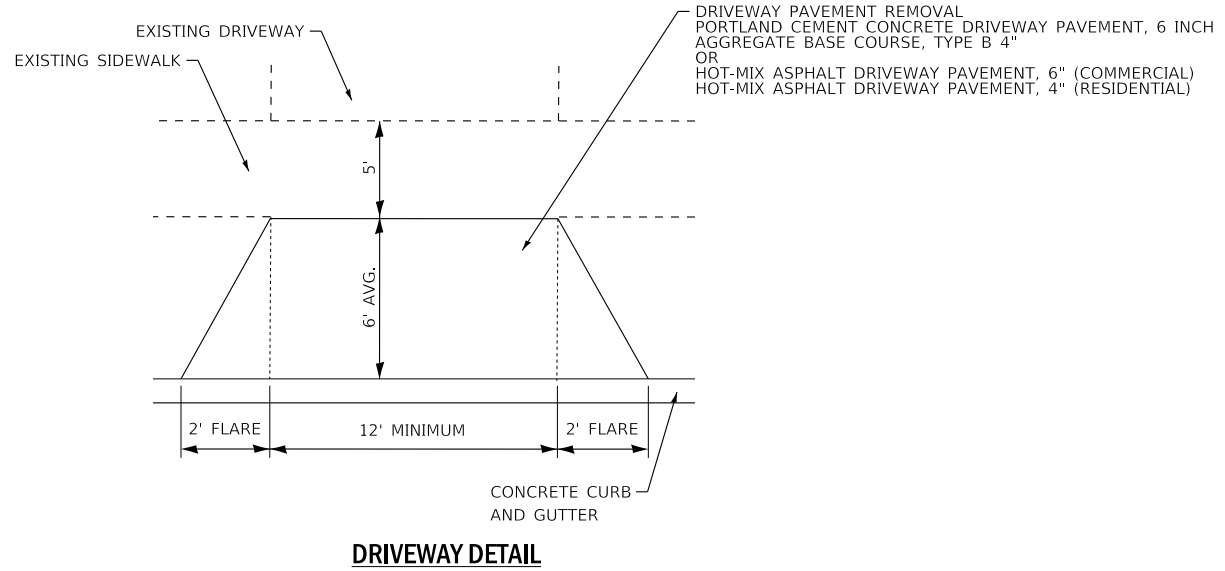
**HOT-MIX ASPHALT MIXTURE REQUIREMENTS**

MIXTURE TYPE	AIR VOIDS @ Ndes	QMP
<b>PAVEMENT RECONSTRUCTION</b>		
HOT-MIX ASPHALT SURFACE COURSE, MIX "D", IL-9.5, N50; 1-3/4"	4% @ 50 Gyr.	LR1030-2
HOT-MIX ASPHALT BINDER COURSE, IL-9.5, N50; 1-1/2"	4% @ 50 Gyr.	LR1030-2
<b>HMA DRIVEWAY PAVEMENT 4"</b>		
HOT-MIX ASPHALT SURFACE COURSE, MIX "D", IL-9.5, N50; 2"	4% @ 50 Gyr.	LR1030-2
HOT-MIX ASPHALT BINDER COURSE, IL-9.5, N50; 2"	4% @ 50 Gyr.	LR1030-2
<b>HMA DRIVEWAY PAVEMENT 6"</b>		
HOT-MIX ASPHALT SURFACE COURSE, MIX "D", IL-9.5, N50; 2"	4% @ 50 Gyr.	LR1030-2
HOT-MIX ASPHALT BINDER COURSE, IL-19.0, N50; 4"	4% @ 50 Gyr.	LR1030-2
<b>PATCHING</b>		
CLASS D PATCHES (HMA BINDER IL-19.0mm); 6"	4% @ 70 Gyr.	LR1030-2

QMP DESIGNATIONS: QUALITY CONTROL/QUALITY ASSURANCE (QC/QA) PER LR1030-2

**NOTES:**

- THE UNIT WEIGHT USED TO CALCULATE ALL HMA SURFACE MIXTURE QUANTITIES IS 112 LBS/SQ YD/IN.
- THE "AC TYPE" FOR POLYMERIZED HMA MIXES SHALL BE "SBS/SBR PG 76 -22" AND FOR NON-POLYMERIZED HMA THE "AC TYPE" SHALL BE "PG 64 -22" UNLESS MODIFIED BY RECLAIMED MATERIALS SPECIFICATIONS.
- LONGITUDINAL JOINT SEALANT SHALL BE PLACED OVER HMA BINDER COURSE.



**DRIVEWAY DETAIL**

STATE OF ILLINOIS - PROFESSIONAL DESIGN FIRM  
 LICENSE NO. - 184-001121 - EXPIRES 4/30/2025  
 rvargas 11/11/2024 10:28:28 AM  
 FILE NAME: P:\CAR\11247-First Street Phase 1\CAD\Sheets\150122\_SHT-TypSec.dgn  
 FILE PATH: P:\CAR\11247-First Street Phase 1\CAD\Sheets\150122\_SHT-TypSec.dgn



USER NAME = rvargas	DESIGNED - MH	REVISED -
	DRAWN - KAR	REVISED -
PLOT SCALE = 20.0000' / in.	CHECKED - JCC	REVISED -
PLOT DATE = 11/11/2024	DATE - 10/30/2024	FILE - 150122_SHT-TypSec.dgn

STATE OF ILLINOIS  
DEPARTMENT OF TRANSPORTATION

<b>FIRST STREET TYPICAL SECTIONS</b>		F.A.U. RTE.	SECTION	COUNTY	TOTAL SHEETS	SHEET NO.
SCALE: NONE		4055	21-00073-00-R5	MCHEMRY	28	9
SHEET 1 OF 1 SHEETS		STA. TO STA.		CONTRACT NO. 61K97		

ILLINOIS	FED. AID PROJECT	1N8P(452)
----------	------------------	-----------

STATE OF ILLINOIS - PROFESSIONAL DESIGN FIRM  
 LICENSE NO. - 184-001121 - EXPIRES 4/30/2025  
 11/11/2024 10:28:29 AM  
 ...\\pltdrv\p\dw\Bw\_Default.plt  
 ...CAD\plots\211247\_Pen\_PHZ.tbl  
 P:\CARV\211247-First Street Phase 1\CAD\Sheets\211247\_SHT-SOQ.dgn  
 FILE NAME: P:\CARV\211247-First Street Phase 1\CAD\Sheets\211247\_SHT-SOQ.dgn



USER NAME = rvargas	DESIGNED - MH	REVISED -
	DRAWN - KAR	REVISED -
PLOT SCALE = 20.0000 ' / in.	CHECKED - JCC	REVISED -
PLOT DATE = 11/11/2024	DATE - 10/30/2024	FILE - 211247_SHT-SOQ.dgn

STATE OF ILLINOIS  
 DEPARTMENT OF TRANSPORTATION

SCHEDULE OF QUANTITIES

SCALE: NTS SHEET 1 OF 2 SHEETS STA. TO STA.

F.A.U. RTE.	SECTION	COUNTY	TOTAL SHEETS	SHEET NO.
4055	21-00073-00-R5	MCHEMRY	28	10
CONTRACT NO. 61K97				
ILLINOIS FED. AID PROJECT IN8P(452)				

SIGN SCHEDULE						
					72000100	72800100
					SIGN PANEL TYPE 1	TELESCOPING STEEL SIGN SUPPORT
STATION	OFFSET	WIDTH (IN)	HEIGHT (IN)	MUTCD CODE	(SQ FT)	(FOOT)
11+74	RT	24.00	18.00	D11-1	9.25	13.00
		30.00	30.00	R4-19		
16+53	RT	24.00	18.00	D11-1c	3.00	11.00
16+54	LT	24.00	18.00	D11-1	9.25	13.00
		30.00	30.00	R4-19		
17+62	RT	24.00	18.00	R3-17	7.00	13.00
		24.00	24.00	R8-3		
17+73	LT	24.00	18.00	R3-17	4.50	12.00
		24.00	9.00	R3-17bP		
		24.00	18.00	D11-1c		
18+88	LT	24.00	18.00	D11-1c	3.00	11.00
21+34	LT	12.00	18.00	R7-9a	1.50	11.00
22+77	RT	24.00	18.00	R3-17	3.00	11.00
23+86	RT	24.00	18.00	R3-17	4.50	12.00
		24.00	9.00	R3-17bP		
24+67	LT	12.00	18.00	R7-9a	1.50	11.00
24+84	RT	24.00	18.00	D11-1	3.00	11.00
26+78	LT	12.00	18.00	R7-9a	1.50	11.00
27+26	RT	24.00	18.00	D11-1	9.25	13.00
		30.00	30.00	R4-19		
29+82	LT	24.00	18.00	R3-17	7.00	13.00
		24.00	24.00	R8-3		
30+20	RT	24.00	18.00	R3-17	7.00	13.00
		24.00	24.00	R8-3		
		30.00	30.00	S1-1		
30+84	RT	24.00	12.00	W16-9P	8.25	13.00
		24.00	30.00	R7-9a		
32+74	RT	12.00	18.00	R7-9a	1.50	11.00
33+61	LT	24.00	18.00	D11-1	3.00	11.00
SUBTOTAL					87.00	214.00

SIGN SCHEDULE						
					72000100	72800100
					SIGN PANEL TYPE 1	TELESCOPING STEEL SIGN SUPPORT
STATION	OFFSET	WIDTH (IN)	HEIGHT (IN)	MUTCD CODE	(SQ FT)	(FOOT)
34+18	LT	30.00	30.00	S1-1	8.25	13.00
		24.00	12.00	W16-9P		
36+00	LT	24.00	18.00	D11-1	9.25	13.00
		30.00	30.00	R4-19		
36+50	LT	24.00	18.00	R3-17	4.50	12.00
		24.00	9.00	R3-17b		
37+38	RT	30.00	30.00	S1-1	8.25	13.00
		24.00	12.00	W16-9P		
38+23	LT	12.00	18.00	R7-9a	1.50	11.00
38+90	RT	30.00	30.00	S1-1	8.44	13.00
		21.00	15.00	W16-7P		
38+98	LT	30.00	30.00	S1-1	8.44	13.00
		21.00	15.00	W16-7P		
39+13	RT	12.00	18.00	R7-9a	1.50	11.00
41+05	LT	30.00	30.00	S1-1	8.25	13.00
		24.00	12.00	W16-9P		
41+48	LT	12.00	18.00	R7-9a	1.50	11.00
42+45	RT	12.00	18.00	R7-9a	1.50	11.00
44+46	LT	12.00	18.00	R7-9a	1.50	11.00
45+46	RT	24.00	18.00	R3-17	4.50	12.00
		24.00	9.00	R3-17b		
46+76	RT	24.00	18.00	D11-1	9.25	13.00
		30.00	30.00	R4-19		
49+84	LT	24.00	18.00	R3-17	7.00	13.00
		24.00	24.00	R8-3		
50+21	RT	24.00	18.00	D1-3c	3.00	11.00
SUBTOTAL					87.00	194.00
TOTALS					174.00	408.00

STATE OF ILLINOIS - PROFESSIONAL DESIGN FIRM  
 LICENSE NO. - 184-001121 - EXPIRES 4/30/2025  
 FILE NAME: P:\CARV2\11247-First Street Phase\ICAD\Sheets\211247\_SHT-SOQ.dgn  
 USER: rvargas  
 PLOT DATE = 11/11/2024



DRIVEWAY SCHEDULE							
			44000200	42300200	42300400	Z0004514	Z0004522
			DRIVEWAY PAVEMENT REMOVAL	PORTLAND CEMENT CONCRETE DRIVEWAY PAVEMENT, 6 INCH	PORTLAND CEMENT CONCRETE DRIVEWAY PAVEMENT, 8 INCH	HOT-MIX ASPHALT DRIVEWAY PAVEMENT, 4"	HOT-MIX ASPHALT DRIVEWAY PAVEMENT, 6"
ADDRESS	STA.	OFFSET	SQ YD	SQ YD	SQ YD	SQ YD	SQ YD
8 E MAIN	11+26	RT	7.9		7.9		
8 E MAIN	12+02	RT	11.3		11.5		
101	12+79	RT	8.0		8.0		
101	13+46	RT	29.6		30.6		
109	13+99	RT	28.0		28.4		
109	14+54	RT	9.0		8.9		
130	15+40	LT	13.2			15.5	
125	15+85	RT	4.5		4.0		
225	19+04	RT	11.9				12.0
218	19+51	LT	23.3	25.7			
224	20+17	LT	2.7			3.3	
230	20+84	LT	3.0			3.2	
225	22+24	RT	12.1				10.6
306	23+02	LT	3.6	3.6			
401	24+03	RT	16.4				15.8
338	24+43	LT	4.5	4.4			
406	26+17	LT	16.1			16.1	
410	27+83	LT	20.2			20.9	
405	28+11	RT	5.4			5.6	
409	28+72	RT	8.2		8.3		
409	29+23	RT	8.0		8.2		
410	29+36	LT	33.9				32.0
409	29+83	RT	12.0		12.6		
409	31+79	RT	9.3		9.5		
410	32+89	LT	38.8				37.5
500	36+90	RT	12.8				12.8
3 E JAMES	38+06	RT	4.6	4.6			
704	39+84	LT	8.5	8.7			
700	39+86	RT	4.0			4.8	
720	40+51	LT	4.0			4.0	
816	43+88	LT	6.7	6.3			
2107 THREE OAKS	47+35	LT	10.5				10.5
2107 THREE OAKS	47+92	LT	7.2				7.1
SUB TOTAL			399.2	53.3	137.9	73.4	138.3
TOTALS			400	54	138	74	139

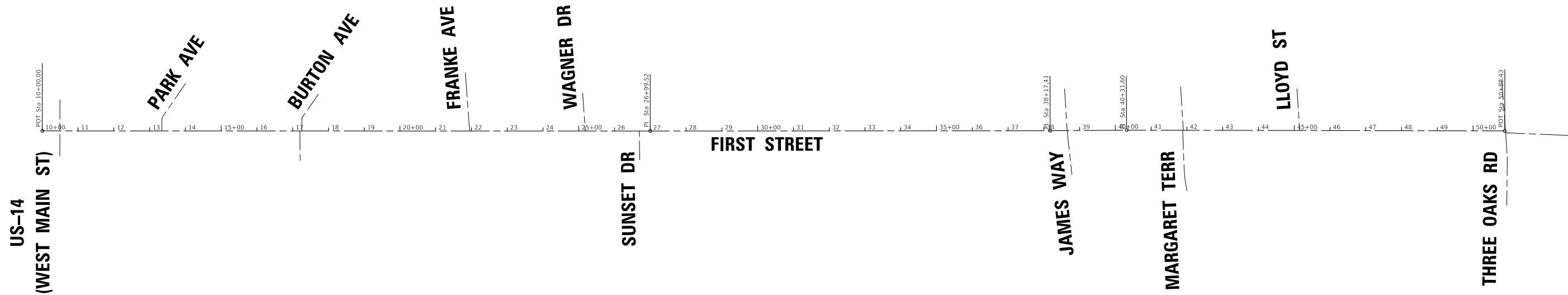
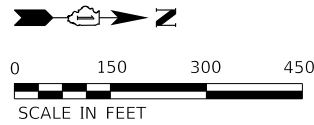
TREE SCHEDULE				
		20101100	20101200	20101350
		TREE TRUNK PROTECTION	TREE ROOT PRUNING	TREE PRUNING (OVER 10 INCH DIAMETER)
STA.	OFFSET	EACH	EACH	EACH
15+54	RT			1
17+70	RT	1	1	
18+18	RT	1	1	
19+50	RT	1	1	
21+15	LT	1	1	
21+50	LT	1	1	
22+63	RT	1	1	
24+90	RT	1	1	
25+67	LT	1	1	
25+95	RT	1	1	1
26+22	RT	1	1	1
27+30	RT	1	1	1
37+54	RT			1
39+05	LT	1	1	
39+21	RT	1	1	
39+35	LT	1	1	
39+55	LT	1	1	
39+68	RT	1	1	
40+11	RT	1	1	
40+75	LT	1	1	
40+90	LT	1	1	
41+13	RT	1	1	1
43+28	RT	1	1	1
43+51	RT	1	1	1
44+21	RT	1	1	
45+58	RT	1	1	1
45+71	LT	1	1	1
46+05	LT	1	1	
46+30	RT	1	1	
47+00	RT	1	1	
47+82	RT	1	1	1
SUB TOTAL		29	29	11
TOTALS		29	29	11

STATE OF ILLINOIS  
 DEPARTMENT OF TRANSPORTATION

SCHEDULE OF QUANTITIES

SCALE: NTS SHEET 2 OF 2 SHEETS STA. TO STA.

F.A.U. RTE.	SECTION	COUNTY	TOTAL SHEETS	SHEET NO.
4055	21-00073-00-R5	MCHEMRY	28	11
CONTRACT NO. 61K97				
ILLINOIS FED. AID PROJECT IN8P(452)				



Beginning chain FIRST description  
 Feature: Geom Pr Centerline

```

=====
Point FIRST1      N      2,018,633.22 E      1,010,007.09 Sta      10+00

Course from FIRST1 to FIRST3 N 0° 02' 38" E Dist 1,699.52

Point FIRST3      N      2,020,332.74 E      1,010,008.39 Sta      27+00

Course from FIRST3 to FIRST5 N 0° 01' 04" W Dist 1,117.89

Point FIRST5      N      2,021,450.63 E      1,010,008.04 Sta      38+17

Course from FIRST5 to FIRST7 N 0° 23' 59" W Dist 214.20

Point FIRST7      N      2,021,664.82 E      1,010,006.55 Sta      40+32

Course from FIRST7 to FIRST8 N 0° 08' 32" E Dist 1,056.83

Point FIRST8      N      2,022,721.65 E      1,010,009.18 Sta      50+88
=====
Ending chain FIRST description
  
```

**McHENRY COUNTY BENCHMARKS**

STATION NUMBER 6737

NORTHING: 2020611.0638  
 EASTING: 1006228.1286  
 ELEVATION: 824.641  
 DESCRIPTION: METAL ROD ACCESSED THROUGH 6-INCH LOGO CAP

STATION NUMBER 6836

NORTHING: 2030687.6971  
 EASTING: 1004857.9181  
 ELEVATION: 842.354  
 DESCRIPTION: STAINLESS STEEL ROD IN SLEEVE ACCESSED THROUGH 6-INCH LOGO CAP

STATE OF ILLINOIS - PROFESSIONAL DESIGN FIRM  
 LICENSE NO. - 184-001121 - EXPIRES 4/30/2025  
 rvargas  
 11/11/2024 10:28:52 AM  
 FILE NAME: P:\CARV\211247-First Street Phase\ICAD\Sheets\211247\_SHT-Align.dgn



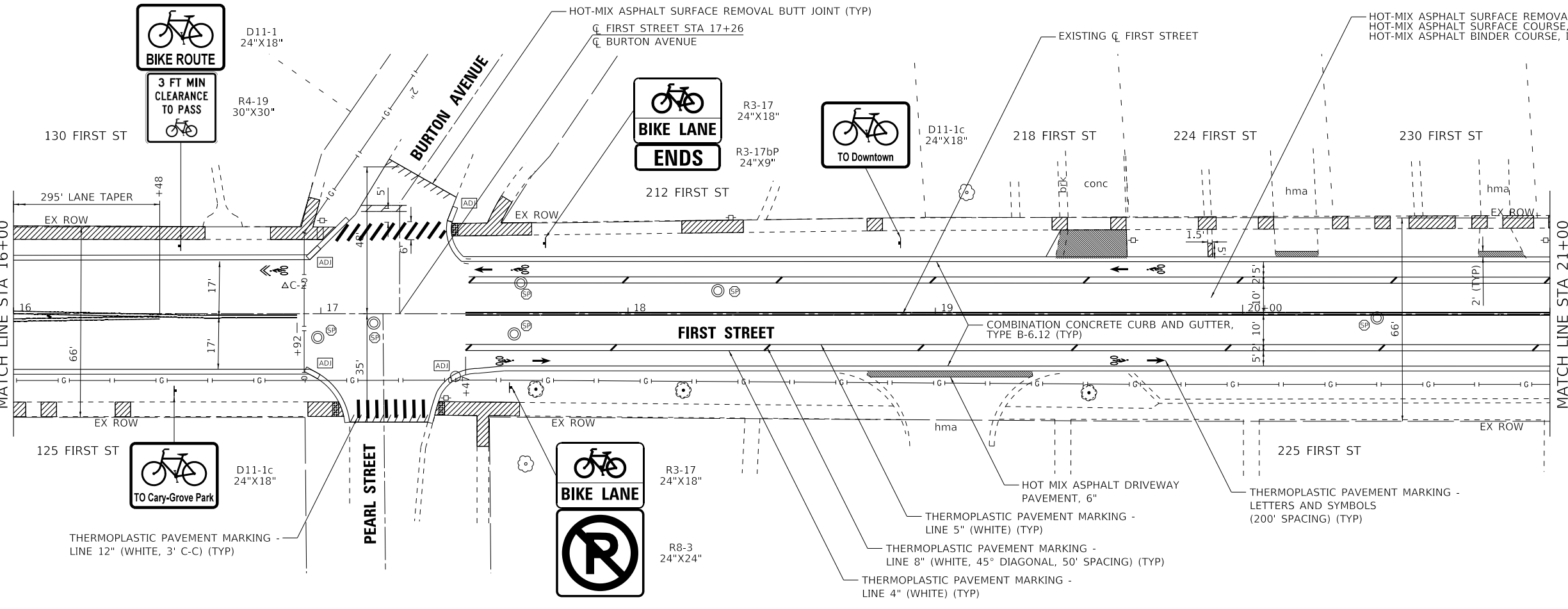
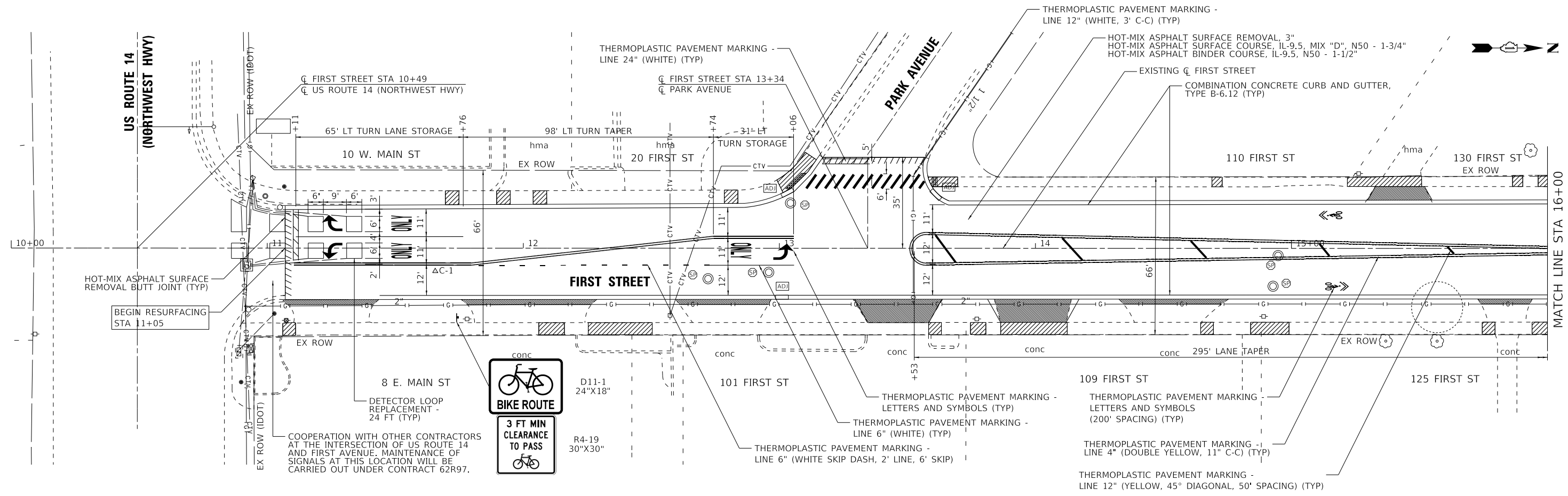
USER NAME = rvargas	DESIGNED - MH	REVISED -
	DRAWN - KAR	REVISED -
PLOT SCALE = 150.0000' / in.	CHECKED - JCC	REVISED -
PLOT DATE = 11/11/2024	DATE - 10/30/2024	FILE - 211247_SHT-Align.dgn

STATE OF ILLINOIS  
 DEPARTMENT OF TRANSPORTATION

**ALIGNMENTS AND BENCHMARKS**

SCALE: 1" = 150' SHEET 1 OF 1 SHEETS STA. 10+00 TO STA. 50+88

F.A.U. RTE.	SECTION	COUNTY	TOTAL SHEETS	SHEET NO.
4055	21-00073-00-R5	McHENRY	28	12
CONTRACT NO. 61K97				
ILLINOIS FED. AID PROJECT IN8P(452)				



**LEGEND**

- SIDEWALK REMOVAL AND PARKWAY RESTORATION
- SIDEWALK REMOVAL AND PORTLAND CEMENT CONCRETE SIDEWALK 5 INCH WITH SIDE CURB AS DIRECTED BY THE ENGINEER
- DRIVEWAY PAVEMENT REMOVAL
- FRAMES AND GRATES TO BE ADJUSTED
- FRAMES AND LIDS TO BE ADJUSTED (SPECIAL)
- TREE TRUNK PROTECTION/TREE ROOT PRUNING
- TREE PRUNING (OVER 10 INCH DIAMETER)
- EXISTING TREE

STATE OF ILLINOIS - PROFESSIONAL DESIGN FIRM  
 LICENSE NO. - 184-001121 - EXPIRES 4/30/2025  
 rvargas  
 11/21/2024 8:37:07 AM  
 FILE NAME: P:\CARV\211247-First Street Phase\ICAD\Sheets\211247\_SHT-Plan1.dgn



USER NAME = rvargas	DESIGNED - MH	REVISED -
PLOT SCALE = 20.0000' / in.	DRAWN - KAR	REVISED -
PLOT DATE = 11/21/2024	CHECKED - JCC	REVISED -
	DATE - 11/21/2024	FILE - 211247_SHT-Plan1.dgn

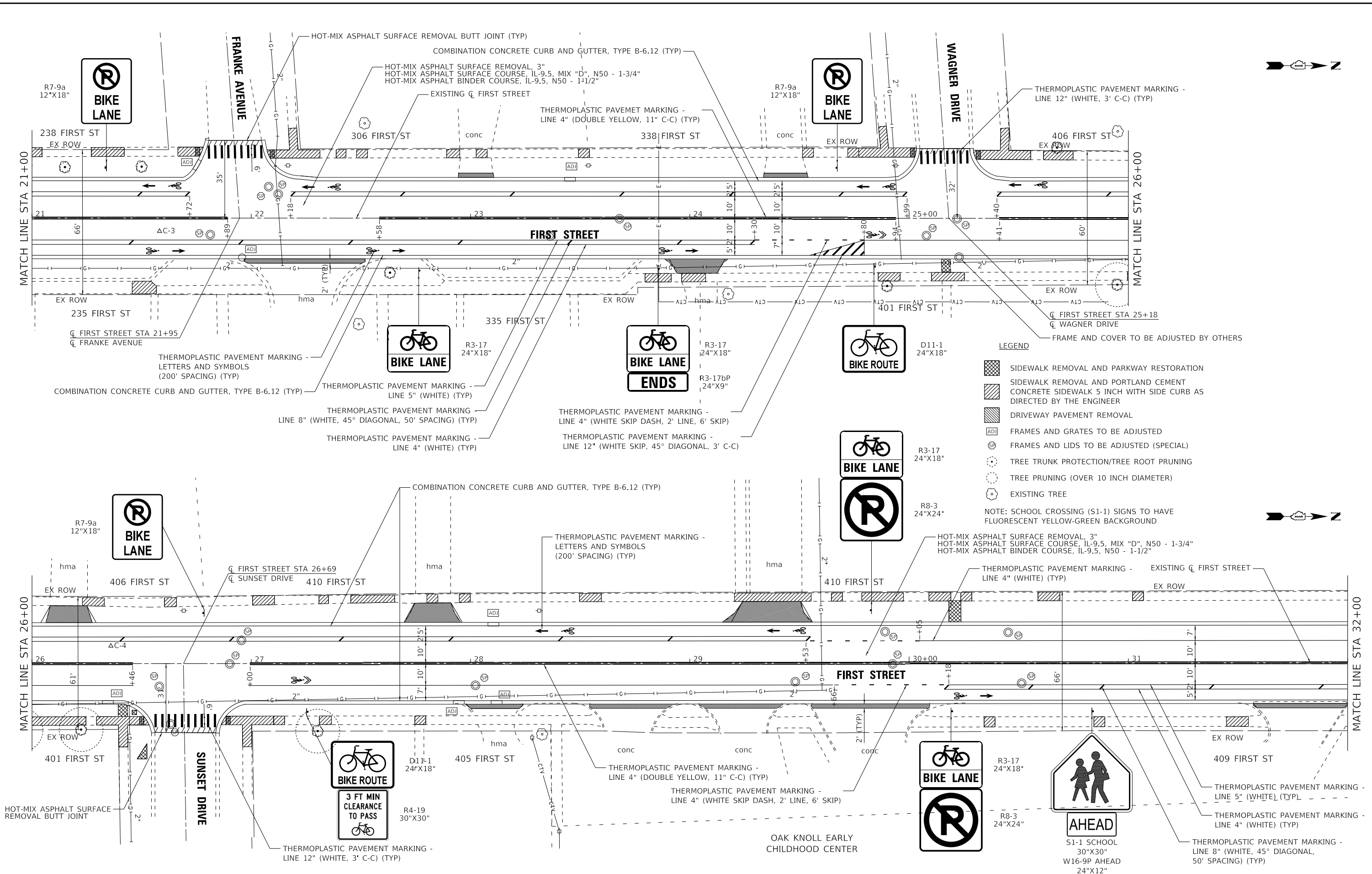
STATE OF ILLINOIS  
 DEPARTMENT OF TRANSPORTATION

**ROADWAY PLAN - FIRST STREET**

SCALE: 1" = 20' SHEET 1 OF 4 SHEETS STA. 10+00 TO STA. 16+00

F.A.U. RTE.	SECTION	COUNTY	TOTAL SHEETS	SHEET NO.
4055	21-00073-00-R5	MCHENRY	28	13
CONTRACT NO. 61K97				
ILLINOIS FED. AID PROJECT INRPI(452)				

STATE OF ILLINOIS - PROFESSIONAL DESIGN FIRM  
 LICENSE NO. - 184-001121 - EXPIRES 4/30/2025  
 FILE NAME: P:\CARV\211247-First Street Phase 1\CAD\Sheets\211247\_SHT-Plan2.dgn  
 USER: rvargas  
 PLOT DATE: 11/21/2024



- LEGEND**
- SIDEWALK REMOVAL AND PARKWAY RESTORATION
  - SIDEWALK REMOVAL AND PORTLAND CEMENT CONCRETE SIDEWALK 5 INCH WITH SIDE CURB AS DIRECTED BY THE ENGINEER
  - DRIVEWAY PAVEMENT REMOVAL
  - FRAMES AND GRATES TO BE ADJUSTED
  - FRAMES AND LIDS TO BE ADJUSTED (SPECIAL)
  - TREE TRUNK PROTECTION/TREE ROOT PRUNING
  - TREE PRUNING (OVER 10 INCH DIAMETER)
  - EXISTING TREE
- NOTE: SCHOOL CROSSING (S1-1) SIGNS TO HAVE FLUORESCENT YELLOW-GREEN BACKGROUND

**BAXTER & WOODMAN**  
 Consulting Engineers

USER NAME = rvargas	DESIGNED - MH	REVISED -
	DRAWN - KAR	REVISED -
PLOT SCALE = 20.0000' / in.	CHECKED - JCC	REVISED -
PLOT DATE = 11/21/2024	DATE - 11/21/2024	FILE - 211247_SHT-Plan2.dgn

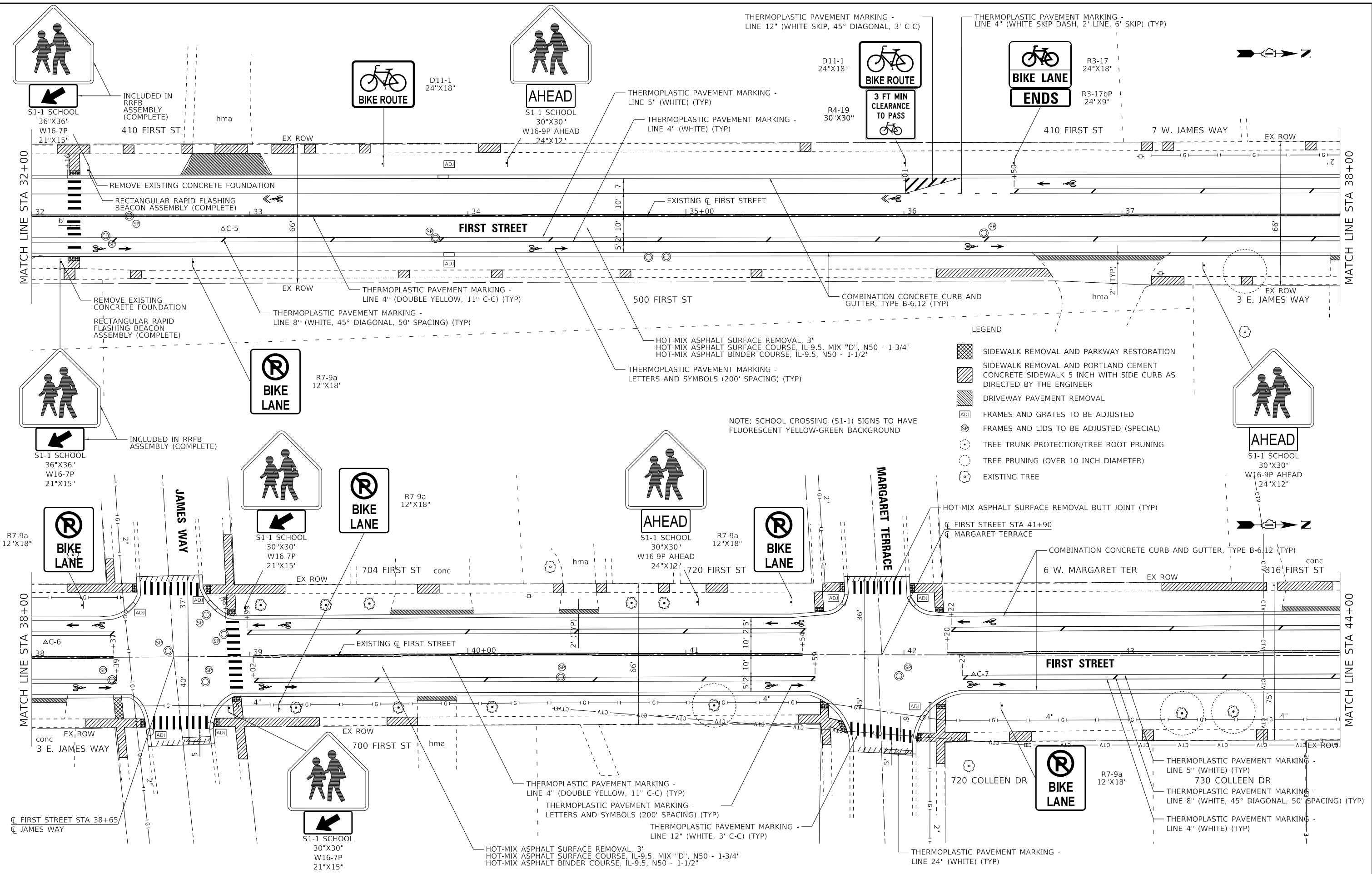
STATE OF ILLINOIS  
 DEPARTMENT OF TRANSPORTATION

**ROADWAY PLAN - FIRST STREET**

SCALE: 1" = 20' SHEET 2 OF 4 SHEETS STA. 16+00 TO STA. 32+00

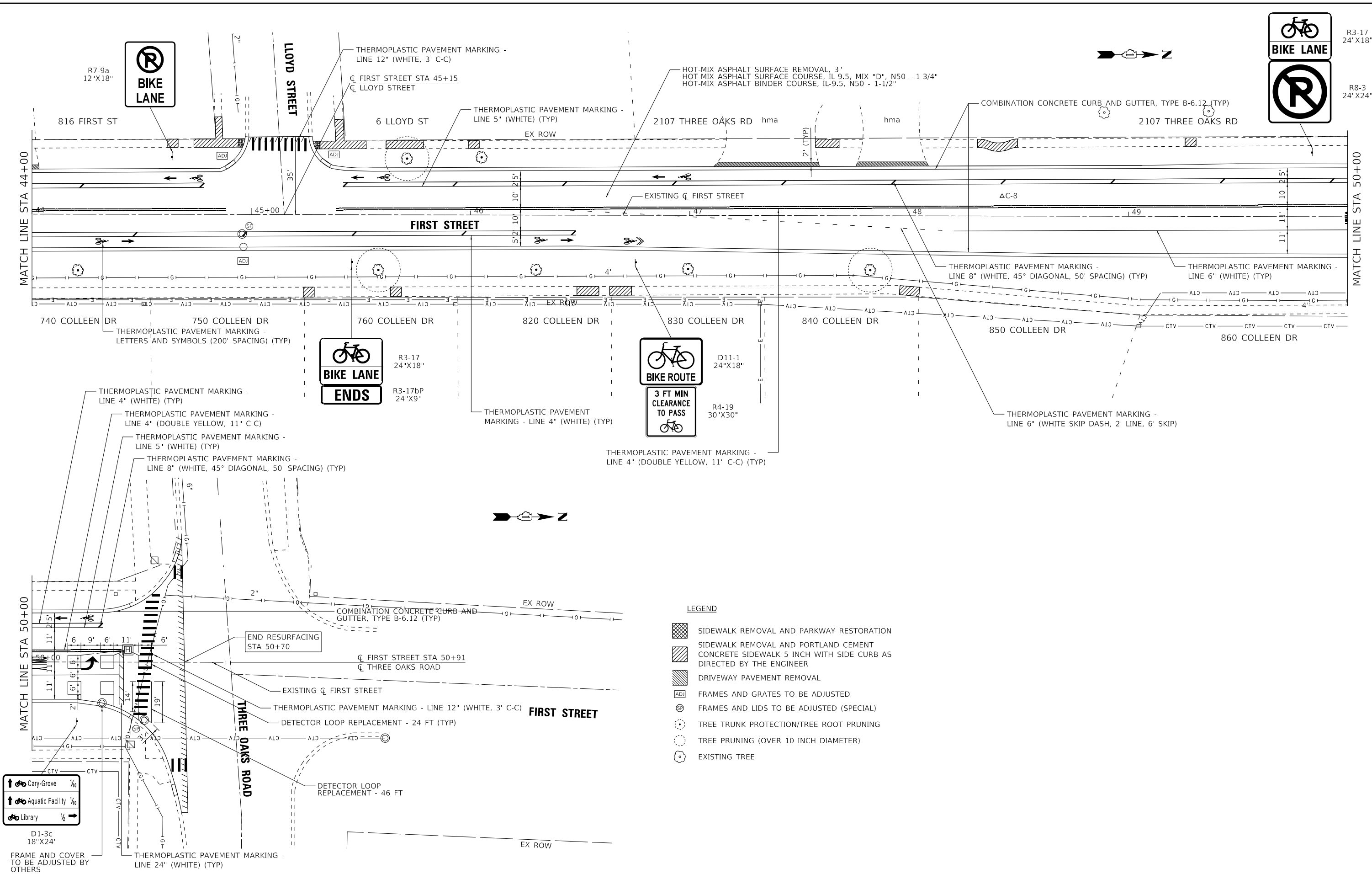
F.A.U. RTE.	SECTION	COUNTY	TOTAL SHEETS	SHEET NO.
4055	21-00073-00-R5	MCHENRY	28	14
CONTRACT NO. 61K97				
ILLINOIS FED. AID PROJECT #NRP(452)				

STATE OF ILLINOIS - PROFESSIONAL DESIGN FIRM  
 LICENSE NO. - 184-001121 - EXPIRES 4/30/2025  
 rvargas  
 11/21/2024  
 8:37:13 AM  
 FILE NAME: P:\CARV\211247-First Street Phase ICAD\Sheets\211247\_SHT-Plan3.dgn  
 FILE PATH: P:\CARV\211247-First Street Phase ICAD\Sheets\211247\_SHT-Plan3.dgn



	USER NAME = rvargas	DESIGNED - MH	REVISED -	<b>STATE OF ILLINOIS</b> <b>DEPARTMENT OF TRANSPORTATION</b>	<b>ROADWAY PLAN - FIRST STREET</b>	F.A.U. RTE. 4055	SECTION 21-00073-00-R5	COUNTY MCHENRY	TOTAL SHEETS 28	SHEET NO. 15	
	PLOT SCALE = 20.0000' / in.	DRAWN - KAR	REVISED -			CONTRACT NO. 61K97					
	PLOT DATE = 11/21/2024	CHECKED - JCC	REVISED -			ILLINOIS FED. AID PROJECT IN8P(452)					
		DATE - 11/21/2024	FILE - 211247_SHT-Plan3.dgn			SCALE: 1" = 20'	SHEET 3 OF 4 SHEETS	STA. 32+00 TO STA. 44+00			

STATE OF ILLINOIS - PROFESSIONAL DESIGN FIRM  
 LICENSE NO. - 184-001121 - EXPIRES 4/30/2025  
 rvargas  
 11/21/2024 8:57:16 AM  
 FILE NAME: P:\CARV\211247-First Street Phase 1\CAD\Sheets\211247\_SHT-Plan4.dgn  
 FILE NAME: P:\CARV\211247-First Street Phase 1\CAD\Sheets\211247\_SHT-Plan4.dgn



- LEGEND**
- SIDEWALK REMOVAL AND PARKWAY RESTORATION
  - SIDEWALK REMOVAL AND PORTLAND CEMENT CONCRETE SIDEWALK 5 INCH WITH SIDE CURB AS DIRECTED BY THE ENGINEER
  - DRIVEWAY PAVEMENT REMOVAL
  - FRAMES AND GRATES TO BE ADJUSTED
  - FRAMES AND LIDS TO BE ADJUSTED (SPECIAL)
  - TREE TRUNK PROTECTION/TREE ROOT PRUNING
  - TREE PRUNING (OVER 10 INCH DIAMETER)
  - EXISTING TREE

**D1-3c**  
18"X24"

FRAME AND COVER TO BE ADJUSTED BY OTHERS

Cary-Grove 1/4  
 Aquatic Facility 1/4  
 Library 1/2

USER NAME = rvargas	DESIGNED - MH	REVISED -
PLOT SCALE = 20.0000' / in.	DRAWN - KAR	REVISED -
PLOT DATE = 11/21/2024	CHECKED - JCC	REVISED -
	DATE - 11/21/2024	FILE - 211247_SHT-Plan4.dgn

STATE OF ILLINOIS  
 DEPARTMENT OF TRANSPORTATION

**ROADWAY PLAN - FIRST STREET**

SCALE: 1" = 20' SHEET 4 OF 4 SHEETS STA. 44+00 TO STA. 50+91

F.A.U. RTE.	SECTION	COUNTY	TOTAL SHEETS	SHEET NO.
4055	21-00073-00-R5	McHENRY	28	16
CONTRACT NO. 61K97				
ILLINOIS FED. AID PROJECT 1NBP(452)				



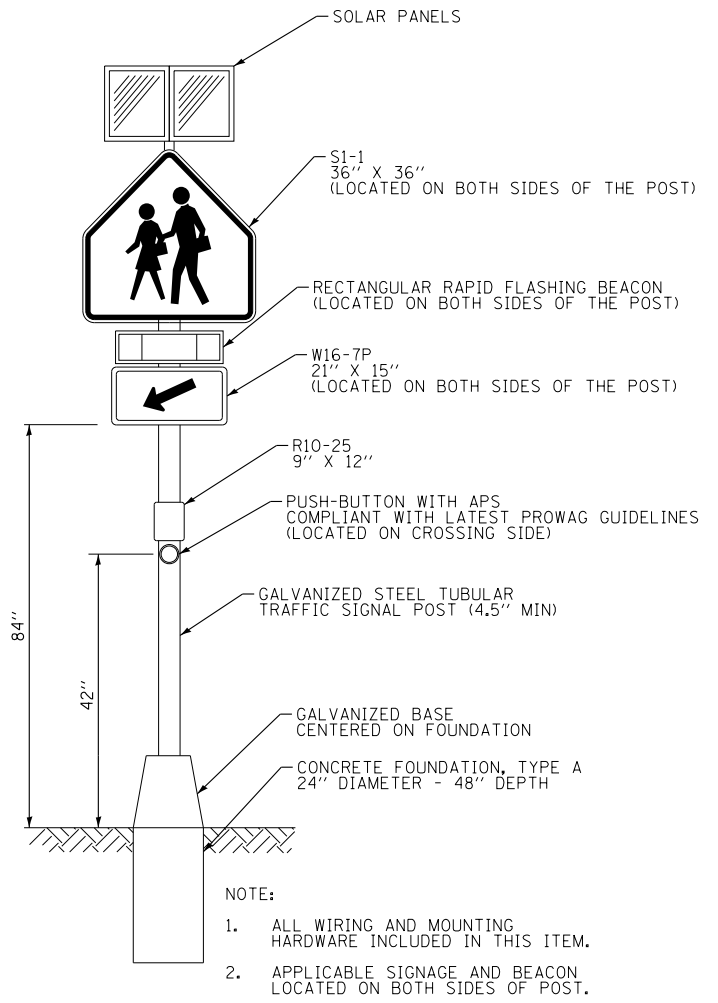


STATE OF ILLINOIS - PROFESSIONAL DESIGN FIRM  
 LICENSE NO. - 184-001121 - EXPIRES 4/30/2025  
 FILE NAME: P:\CARV\211247-First Street Phase I\CAD\Sheets\211247\_SHT-MiscDetails.dgn  
 FILE NUMBER: P:\CARV\211247-First Street Phase I\CAD\Sheets\211247\_SHT-MiscDetails.dgn

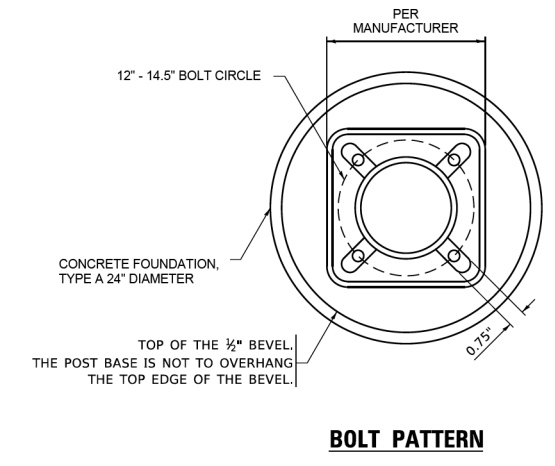


USER NAME = rvargas	DESIGNED - MH	REVISED -
PLOT SCALE = 20.0000' / in.	DRAWN - KAR	REVISED -
PLOT DATE = 11/11/2024	CHECKED - JCC	REVISED -
	DATE - 10/30/2024	FILE - 211247_SHT-MiscDetails.dgn

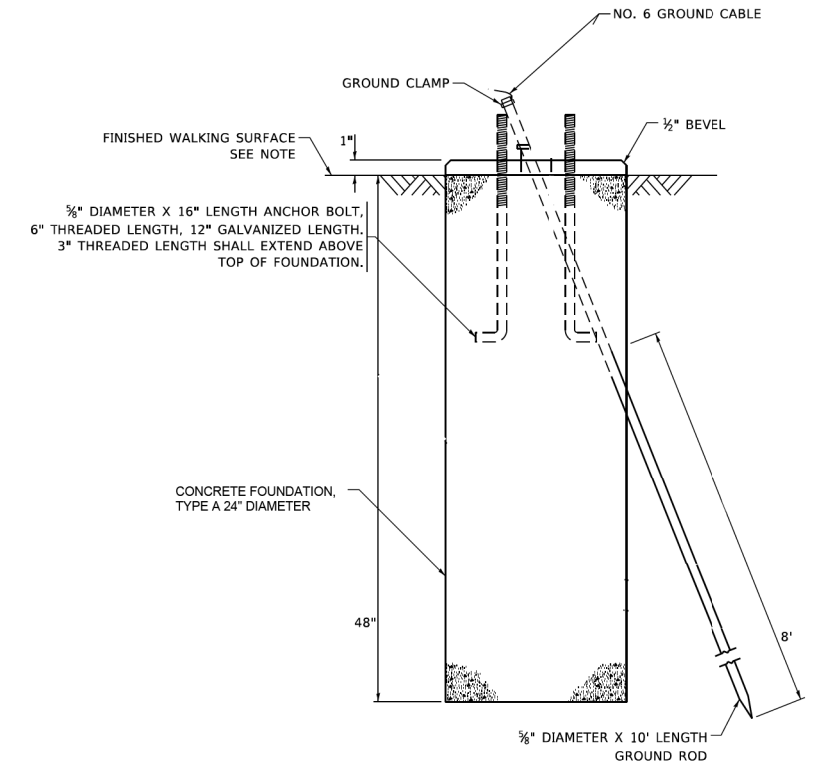
**RECTANGULAR RAPID FLASHING BEACON ASSEMBLY (COMPLETE) DETAIL**  
 NOT TO SCALE



- NOTE:
1. ALL WIRING AND MOUNTING HARDWARE INCLUDED IN THIS ITEM.
  2. APPLICABLE SIGNAGE AND BEACON LOCATED ON BOTH SIDES OF POST.



- NOTE:
1. IF THE POST FOUNDATION IS INSTALLED WITHIN OR BEHIND A BARRIER CURB, THE TOP OF THE FOUNDATION SHALL BE INSTALLED FLUSH WITH THE TOP OF THE BARRIER CURB.



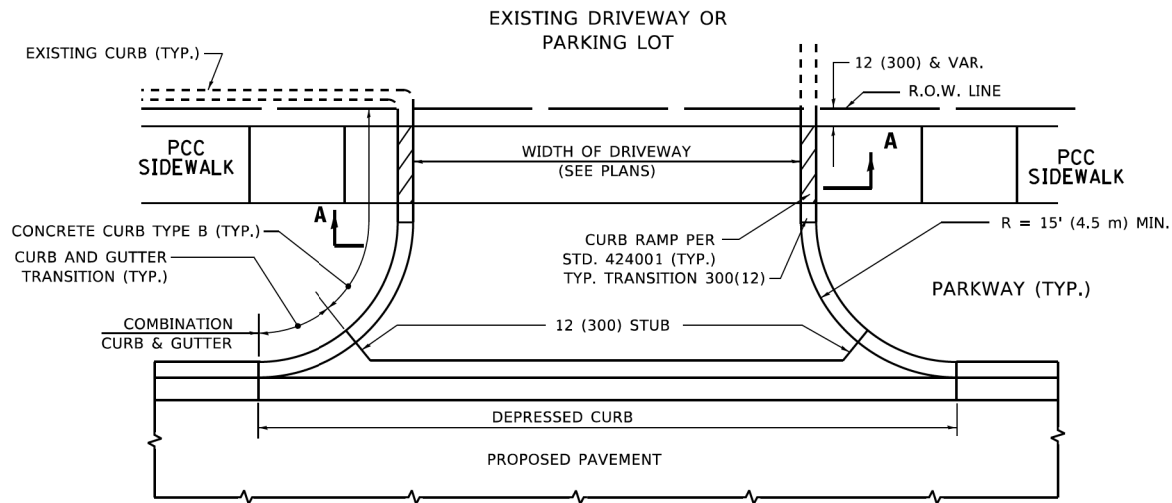
**CONCRETE FOUNDATION, TYPE A 24\"/>**

STATE OF ILLINOIS  
 DEPARTMENT OF TRANSPORTATION

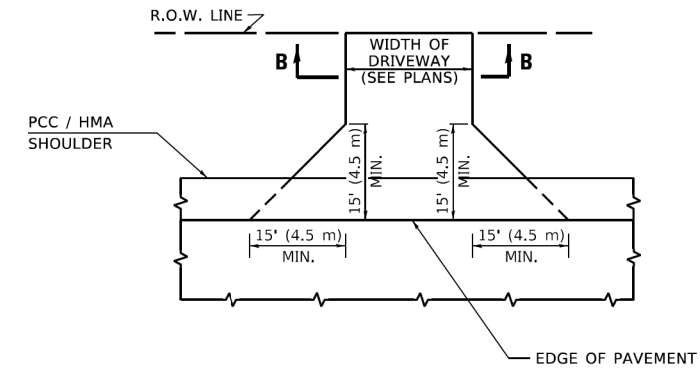
**MISCELLANEOUS DETAILS**

SCALE: N.T.S. SHEET 1 OF 1 SHEETS STA. TO STA.

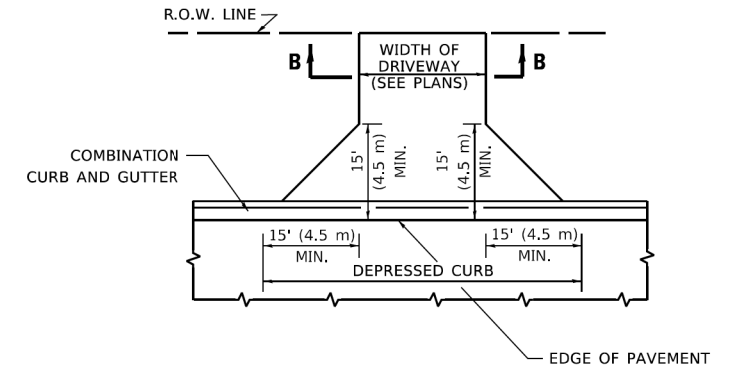
F.A.U. RTE.	SECTION	COUNTY	TOTAL SHEETS	SHEET NO.
4055	21-00073-00-R5	McHENRY	28	17
CONTRACT NO. 61K97				
ILLINOIS FED. AID PROJECT 1N8P(452)				



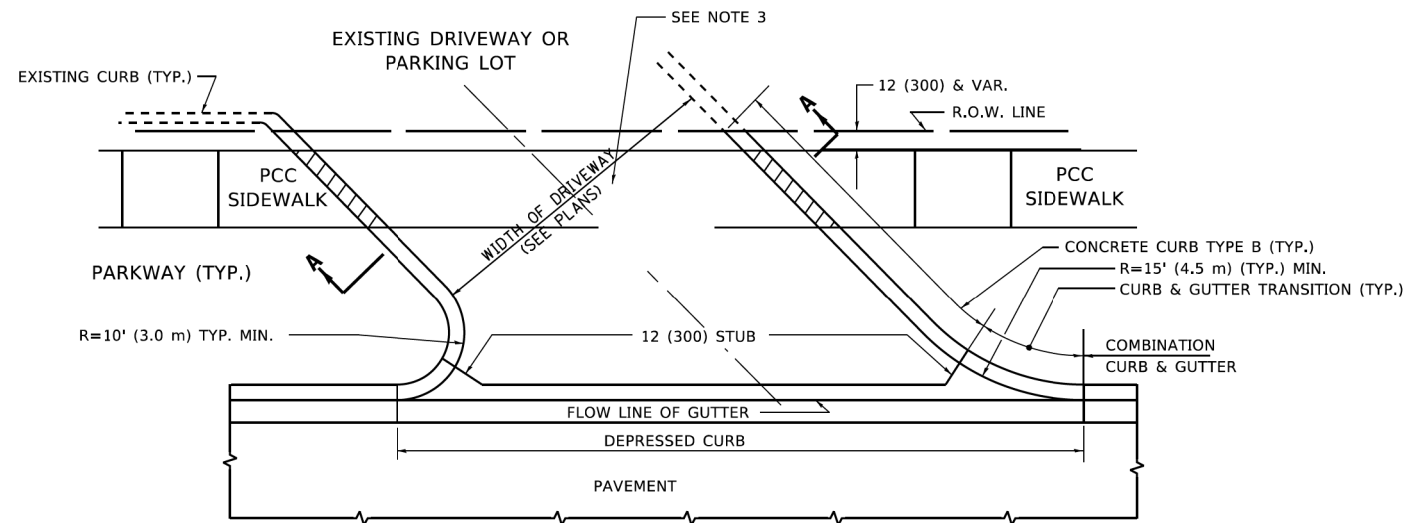
**WITH CONCRETE CURB, TYPE B**



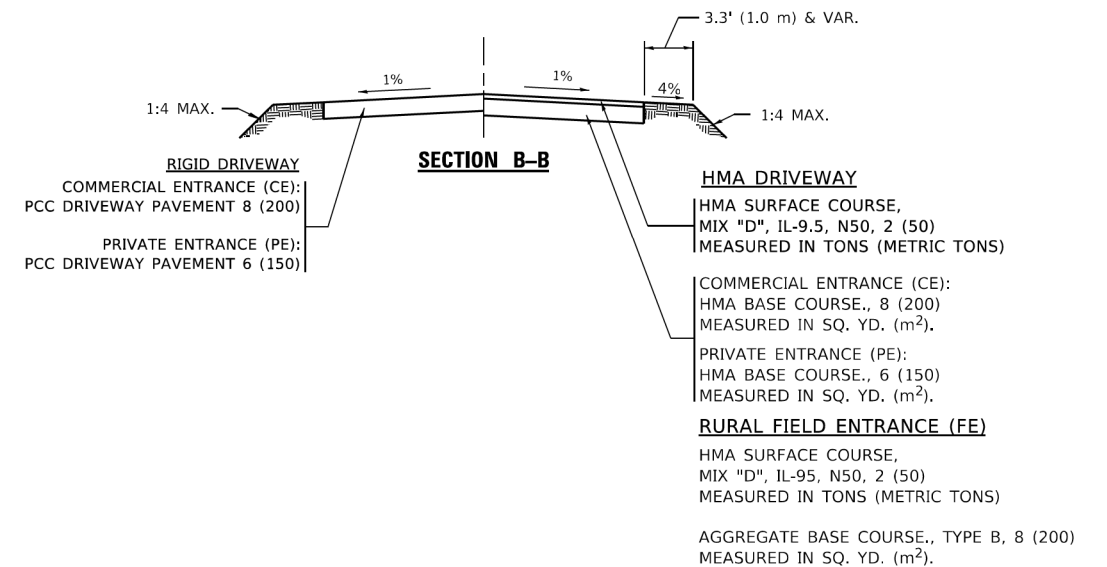
**ADJACENT TO PCC /HMA SHOULDER**



**ADJACENT TO CURB AND GUTTER**



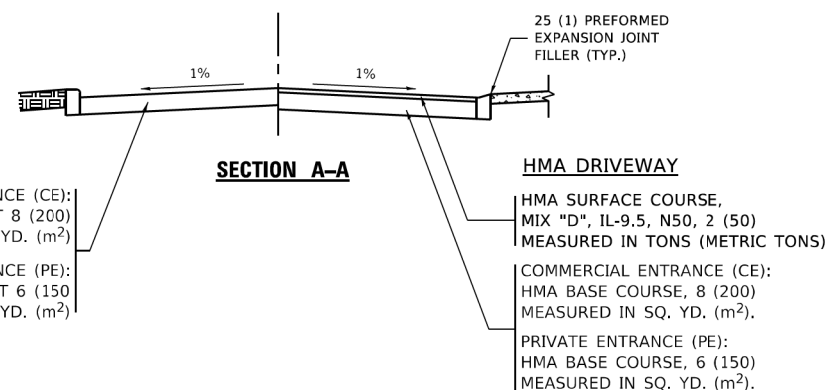
**WITH CONCRETE CURB, TYPE B**



**GENERAL NOTES**

1. DRIVEWAY SLOPES, LOCATIONS, & GEOMETRIC LAYOUT SHALL BE IN ACCORDANCE WITH THE LATEST EDITION OF THE "HANDBOOK FOR POLICY ON PERMITS FOR ACCESS DRIVEWAYS TO STATE HIGHWAYS". FOR FURTHER LAYOUT REQUIREMENTS, REFER TO ILLUSTRATIONS IN THE PERMIT HANDBOOK. DRIVEWAYS SHALL BE REPLACED IN KIND, UNLESS OTHERWISE NOTED ON THE PLANS.
2. COMMERCIAL DRIVEWAYS SHALL BE CONSTRUCTED WITH CONCRETE CURB, TYPE B RETURNS EXCEPT WHEN THE SIDEWALK EDGE IS 4 FEET (1.2 METERS) OR LESS FROM THE BACK OF CURB, CONSTRUCT A FLARE DRIVEWAY WITHOUT CURB.

ALL DIMENSIONS ARE IN INCHES (MILLIMETERS) UNLESS OTHERWISE NOTED.



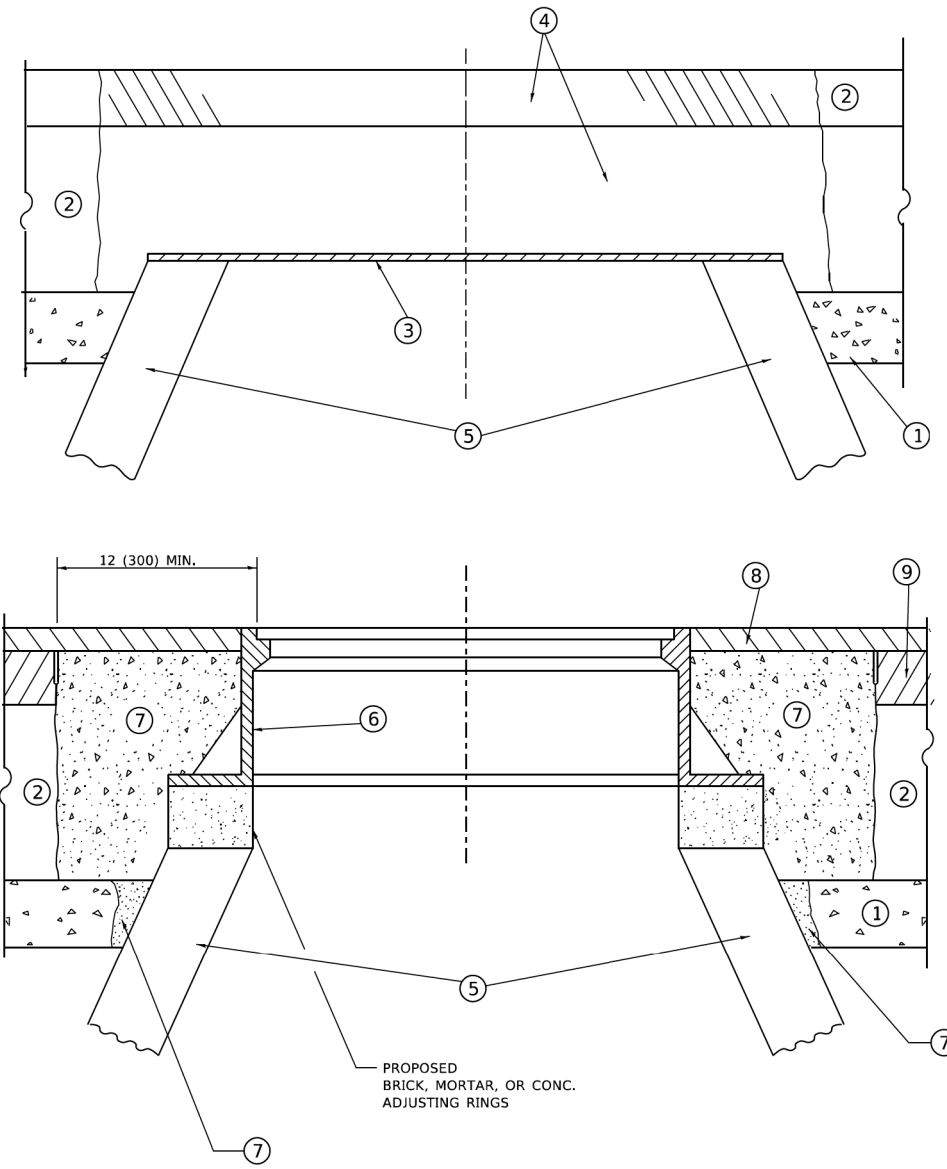
MODEL: Default  
FILE: h:\miller\pav\illinois\dw\benlby.com\PIV\DOT\Documents\DOT\_Offices\District\_1\Projects\Dist\1823\3A\CADD\3A\CAD\Sheet\BD01.dgn

USER NAME = Lawrence,DeManche	DESIGNED - R. SHAH	REVISED - R. BORO 06-11-08
	DRAWN -	REVISED - R. BORO 09-06-11
PLOT SCALE = 100,0000' / in.	CHECKED -	REVISED - K. SMITH 08-28-19
PLOT DATE = 11/18/2022	DATE - 11-04-95	REVISED - K. SMITH 11-18-22

**STATE OF ILLINOIS  
DEPARTMENT OF TRANSPORTATION**

<b>DRIVEWAY DETAILS - DISTANCE BETWEEN R.O.W. AND FACE OF CURB &amp; EDGE OF SHOULDER ≥ 15'(4.5m)</b>			
SCALE: NONE	SHEET 1	OF 1 SHEETS	STA. TO STA.

F.A. RTE.	SECTION	COUNTY	TOTAL SHEETS	SHEET NO.
	21-00073-00-R5	McHENRY	28	18
<b>BD400-01 (BD-01)</b>			CONTRACT NO. 61K97	
ILLINOIS   FED. AID PROJECT   1N8P(452)				



**DETAILS FOR FRAMES AND LIDS ADJUSTMENT  
WITH MILLING**

**NOTES**

1. EXISTING BROKEN FRAMES AND LIDS SHALL BE REMOVED AND DISPOSED OF BY THE CONTRACTOR AND SHALL BE REPLACED AS DIRECTED BY THE ENGINEER. REPLACEMENT FRAMES AND LIDS WILL BE PAID FOR IN ACCORDANCE WITH ARTICLE 109.04 OF THE STANDARD SPECIFICATIONS UNLESS A SEPARATE PAY ITEM HAS BEEN PROVIDED.
2. IF THE EXISTING LIDS ARE OPEN, THE FRAME WILL BE ADJUSTED TO THE ELEVATION OF THE MILLED PAVEMENT SURFACE PRIOR TO THE MILLING OPERATION. THE FRAME WILL NOT BE REMOVED AND COVERED BY THE METAL PLATE.
3. CITY OF CHICAGO CASTINGS ARE THE PROPERTY OF THE CITY AND THE CONTRACTOR SHALL NOTIFY THE CITY FOR REMOVAL AND DISPOSITION OF THE CASTINGS.
4. THE METAL PLATE USED TO COVER THE STRUCTURE SHALL REMAIN THE PROPERTY OF THE CONTRACTOR.
5. THE CONTRACTOR SHALL REMOVE ALL TRAFFIC CONTROL DEVICES BY THE END OF EACH WORK SHIFT.

**CONSTRUCTION PROCEDURES**

- STAGE 1 (BEFORE PAVEMENT MILLING)**
- A) REMOVE A MINIMUM OF 12 (300) OF THE PAVEMENT FROM AROUND THE STRUCTURE.
  - B) REMOVE THE EXISTING FRAME AND LID FROM THE STRUCTURE.
  - C) COVER THE STRUCTURE OPENING WITH A 36 (900) DIAMETER METAL PLATE.
  - D) BACKFILL WITH CRUSHED STONE AND HMA SURFACE MIX APPROVED BY THE ENGINEER. (MIN. 3 (80) HMA TO REMAIN AFTER MILLING).
- STAGE 2 (AFTER PAVEMENT MILLING)**
- A) REMOVE THE HMA SURFACE MIX AND CRUSHED STONE.
  - B) INSTALL THE FRAME AND LID; ADJUST THE FRAME TO ITS FINAL SURFACE ELEVATION.
  - C) THE SURROUNDING SPACE SHALL BE FILLED WITH CLASS PP-2\* CONCRETE TO THE ELEVATION OF THE SURFACE OF THE EXISTING BASE COURSE OR THE BINDER COURSE.
- \* UNLESS OTHERWISE SPECIFIED IN THE PLANS.

THE PROCEDURE EXPLAINED ABOVE SHALL CONFORM TO THE APPLICABLE PORTIONS OF SECTIONS 353, 406, 602, AND 603 OF THE STANDARD SPECIFICATIONS EXCEPT THAT "THE CONTRACTOR SHALL ADJUST THE STRUCTURES TO THE FINISHED PAVEMENT ELEVATION NO MORE THAN 5 CALENDAR DAYS PRIOR TO PLACEMENT OF THE FINAL LIFT OF SURFACE UNLESS APPROVED BY THE ENGINEER."

**LEGEND**

- |  |                               |
|--|-------------------------------|
| ① SUB-BASE GRANULAR MATERIAL                 | ⑥ FRAME AND LID (SEE NOTES)   |
| ② EXISTING PAVEMENT                          | ⑦ CLASS PP-2* CONCRETE        |
| ③ 36 (900) DIAMETER METAL PLATE              | ⑧ PROPOSED HMA SURFACE COURSE |
| ④ PROPOSED CRUSHED STONE AND HMA SURFACE MIX | ⑨ PROPOSED HMA BINDER COURSE  |
| ⑤ EXISTING STRUCTURE                         |                               |

**LOCATION OF STRUCTURES**

THE CONTRACTOR WILL BE REQUIRED TO KEEP A RECORD OF THE LOCATIONS OF THE BURIED STRUCTURES ACCORDING TO THE STATION AND DISTANCE LEFT OR RIGHT OF THE CENTERLINE OF PAVEMENT. UPON COMPLETION OF THE WORK, THE CONTRACTOR WILL DELIVER THE RECORD TO THE ENGINEER.

**BASIS OF PAYMENT**

1. REMOVING FRAMES AND LIDS ON DRAINAGE AND UTILITY STRUCTURES IN THE PAVEMENT PRIOR TO MILLING, AND ADJUSTING TO FINAL GRADE PRIOR TO PLACING THE SURFACE COURSE, WILL BE PAID FOR AT THE CONTRACT UNIT PRICE EACH FOR "FRAMES AND LIDS TO BE ADJUSTED (SPECIAL)."
2. THIS WORK WILL NOT BE PAID FOR WHEN DRAINAGE AND UTILITY STRUCTURES ARE SPECIFIED FOR PAYMENT AS STRUCTURE RECONSTRUCTION.
3. NEW FRAMES AND LIDS, WHEN SPECIFIED, WILL BE PAID FOR SEPARATELY.
4. WHEN STRUCTURES ARE TO BE ADJUSTED OR RECONSTRUCTED, THE LOWERING AND RAISING OF THE FRAMES AND LIDS WILL NOT BE PAID FOR SEPARATELY BUT WILL BE INCLUDED IN THE COST OF THE CORRESPONDING PAY ITEM.

ALL DIMENSIONS ARE IN INCHES (MILLIMETERS) UNLESS OTHERWISE SHOWN

MODEL: Default  
FILE NAME: W:\ASSTC\0223\310b08.dgn

USER NAME = Lawrence,DeManche	DESIGNED - R. SHAH	REVISED - R. BORO 03-09-11
	DRAWN -	REVISED - R. BORO 12-06-11
PLOT SCALE = 100,0000' / in.	CHECKED -	REVISED - K. SMITH 11-18-22
PLOT DATE = 9/15/2023	DATE - 10-25-94	REVISED - K. SMITH 09-15-23

**STATE OF ILLINOIS  
DEPARTMENT OF TRANSPORTATION**

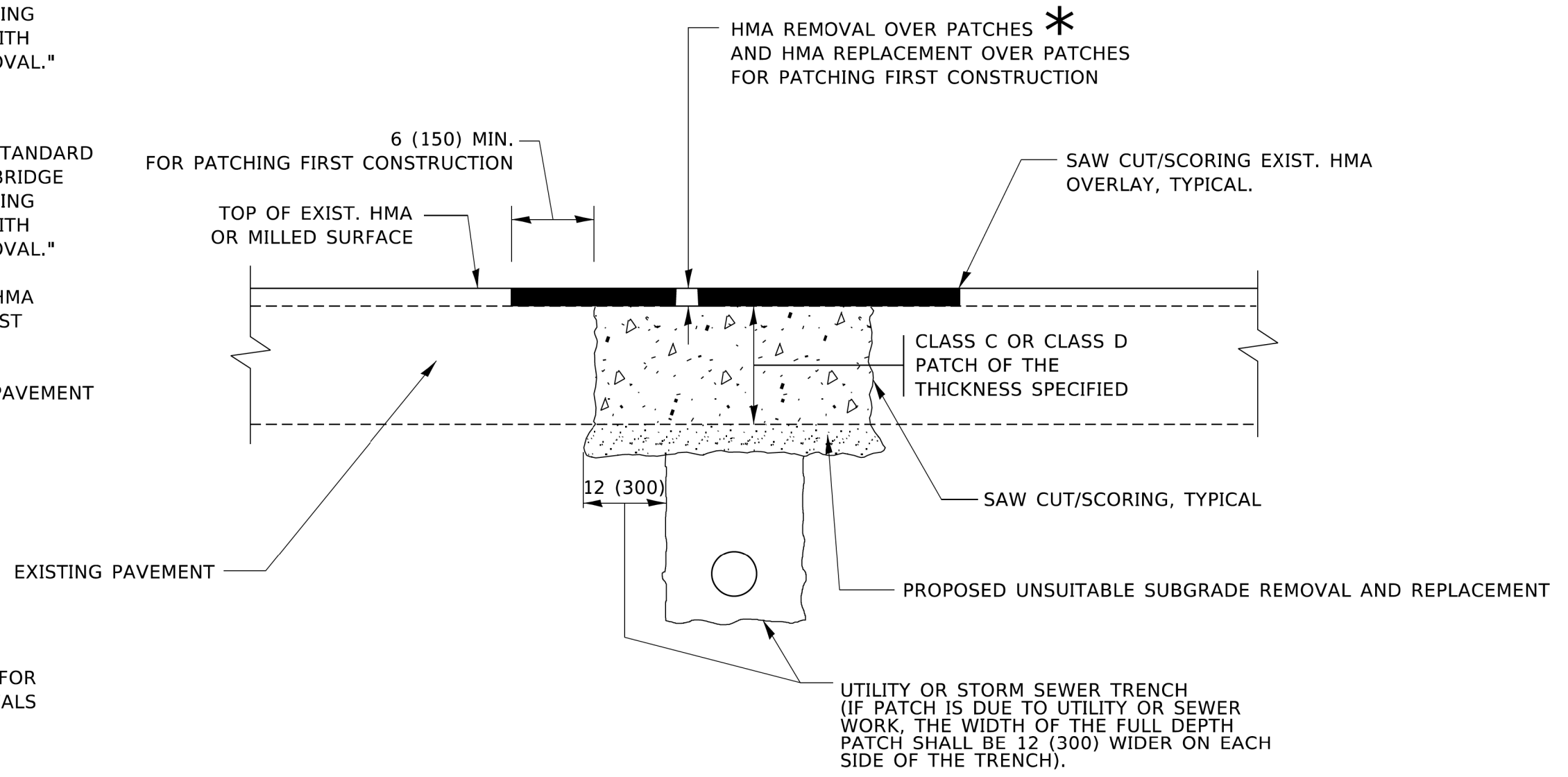
SCALE: NONE		SHEET 1 OF 1 SHEETS		STA. TO STA.		
		F.A. RTE.		SECTION	COUNTY	
DETAILS FOR FRAMES AND LIDS ADJUSTMENT WITH MILLING				TOTAL SHEETS		SHEET NO.
				28		19
BD600-03 (BD-08)				CONTRACT NO. 61K97		
ILLINOIS FED. AID PROJECT 1N8P(452)						

**METHOD OF MEASUREMENT**

REFER TO SECTION 442 OF THE STANDARD SPECIFICATIONS FOR ROAD AND BRIDGE CONSTRUCTION AND THE RECURRING SPECIAL PROVISION "PATCHING WITH HOT-MIX ASPHALT OVERLAY REMOVAL."

**BASIS OF PAYMENT**

1. REFER TO SECTION 442 OF THE STANDARD SPECIFICATIONS FOR ROAD AND BRIDGE CONSTRUCTION AND THE RECURRING SPECIAL PROVISION "PATCHING WITH HOT-MIX ASPHALT OVERLAY REMOVAL."
2. SAW CUT/SCORING OF EXISTING HMA OVERLAY IS INCLUDED IN THE COST OF PAVEMENT PATCHING.
3. SAW CUT/SCORING OF EXISTING PAVEMENT IS INCLUDED IN THE COST OF PAVEMENT PATCHING.



\* SEE TYPICAL SECTIONS FOR THICKNESS AND MATERIALS

**SEQUENCE OF CONSTRUCTION (PATCHING FIRST)**

1. REMOVE THE EXISTING HMA MATERIAL OVER THE AREA TO BE PATCHED.
2. REMOVE AND REPLACE WITH CLASS C OR D PATCH.
3. REPLACE HMA MATERIAL OVER THE AREA TO BE PATCHED.

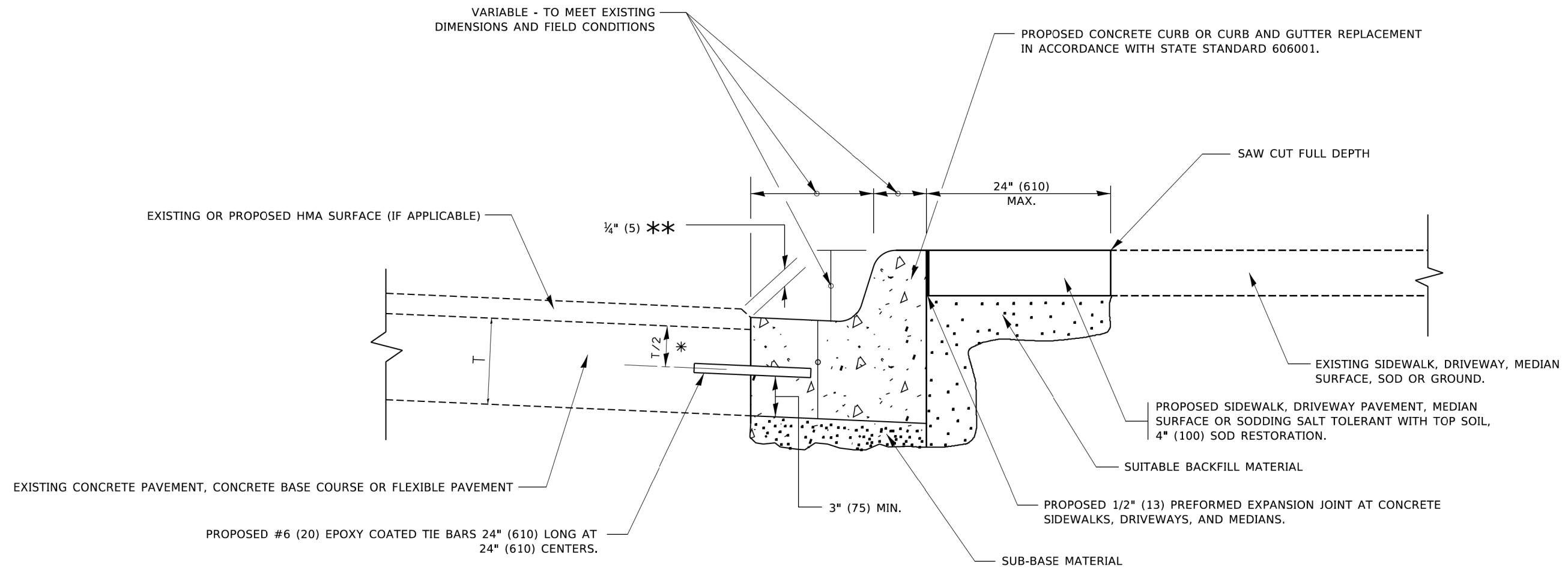
**SEQUENCE OF CONSTRUCTION (MILLING FIRST)**

1. MILL HMA FIRST IF THERE IS AT LEAST 4½ INCHES OR MORE OF HMA MATERIAL ON TOP OF THE EXISTING PAVEMENT OR IF THE PAVEMENT IS FULL DEPTH HMA. A MINIMUM OF 2 INCHES OF HMA MATERIAL SHALL BE IN PLACE AFTER MILLING.
2. REMOVE AND REPLACE WITH FULL DEPTH CLASS D PATCHES TO TOP OF MILLED SURFACE.

ALL DIMENSIONS ARE IN INCHES (MILLIMETERS) UNLESS OTHERWISE SHOWN.

MODEL: Default FILE: \\nrcs\pwworking\benby.com\PI\DOT\Documents\DOT\_Offices\District 1\Projects\Dist1\223\CAD\Drawn\CAD\Sheets\1822.dgn

USER NAME = Lawrence,DeManche DRAWN - CHECKED - DATE - 10-25-94 PLOT SCALE = 100,0000' / in. PLOT DATE = 11/18/2022	DESIGNED - R. SHAH DRAWN - CHECKED - DATE - 10-25-94	REVISED - R. BORO 01-01-07 REVISED - R. BORO 09-04-07 REVISED - K. ENG 10-27-08 REVISED - K. SMITH 11-18-22	<b>STATE OF ILLINOIS DEPARTMENT OF TRANSPORTATION</b>	<b>PAVEMENT PATCHING FOR HMA SURFACED PAVEMENT</b>	F.A. RTE. SECTION COUNTY TOTAL SHEETS SHEET NO. BD400-04 (BD-22) CONTRACT NO. 61K97 ILLINOIS FED. AID PROJECT 1N8P(452)
SCALE: NONE			SHEET 1 OF 1 SHEETS STA. TO STA.		



- \* 3" (75) MINIMUM FROM TOP AND BOTTOM OF THE CONCRETE PAVEMENT OR BASE COURSE.
- \*\* IF THE FINAL SURFACE OF THE PAVEMENT IS CONCRETE, THE GUTTER IS TO BE FLUSH WITH THE PAVEMENT.

# CURB OR CURB AND GUTTER REMOVAL AND REPLACEMENT

ALL DIMENSIONS ARE IN INCHES (MILLIMETERS) UNLESS OTHERWISE SHOWN.

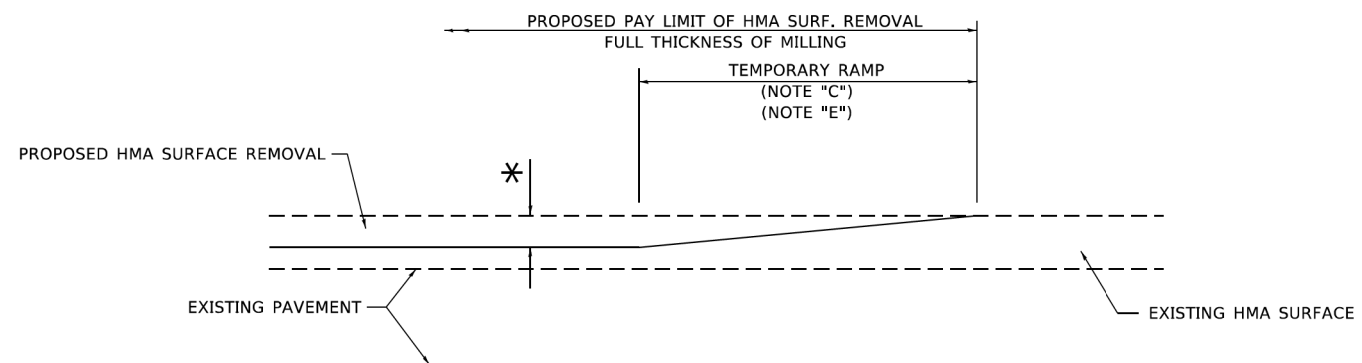
MODEL: Default  
FILE: \\miller-prod\planroom\com.ecd.illinois.gov\PI\DOT\Documents\DOT\_Offices\District\_1\Projects\DH\54272-21\CADD\ba\Curb\sheet1\ba24.dgn

USER NAME = footemj	DESIGNED - A. HOUSEH	REVISED - A. ABBAS 03-21-97
	DRAWN -	REVISED - M. GOMEZ 01-22-01
PLOT SCALE = 50,0000' / ft.	CHECKED -	REVISED - R. BORO 12-15-09
PLOT DATE = 7/11/2019	DATE - 03-11-94	REVISED - K. SMITH 07-11-19

**STATE OF ILLINOIS  
DEPARTMENT OF TRANSPORTATION**

<b>CURB OR CURB AND GUTTER REMOVAL AND REPLACEMENT</b>			
SCALE: NONE	SHEET 1 OF 1 SHEETS	STA.	TO STA.

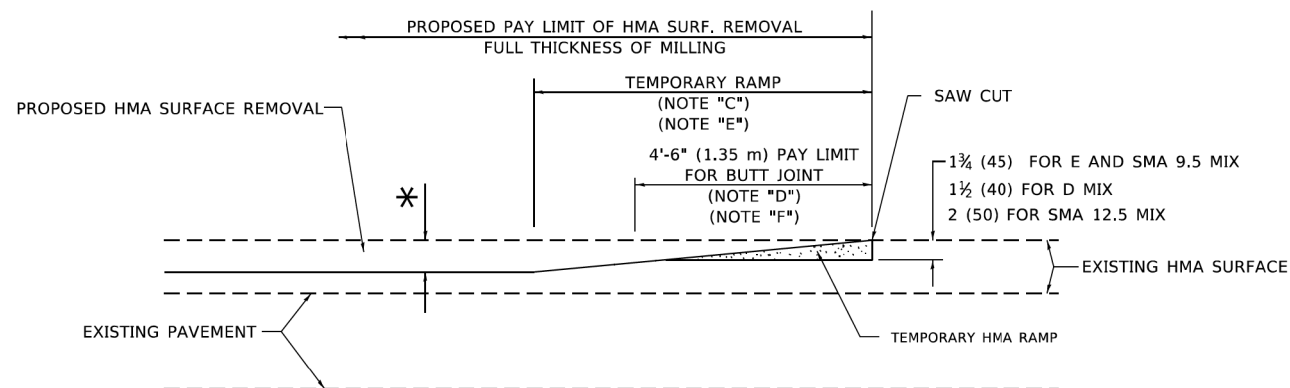
F.A. RTE.	SECTION	COUNTY	TOTAL SHEETS	SHEET NO.
	21-00073-00-R5	McHENRY	28	21
<b>BD600-06 (BD-24)</b>		CONTRACT NO. 61K97		
ILLINOIS FED. AID PROJECT 1N8P(452)				



**MILLED TEMPORARY RAMP**

(FOR BUTT JOINT AND HMA TAPER SEE DETAIL BELOW)

**OPTION 1**

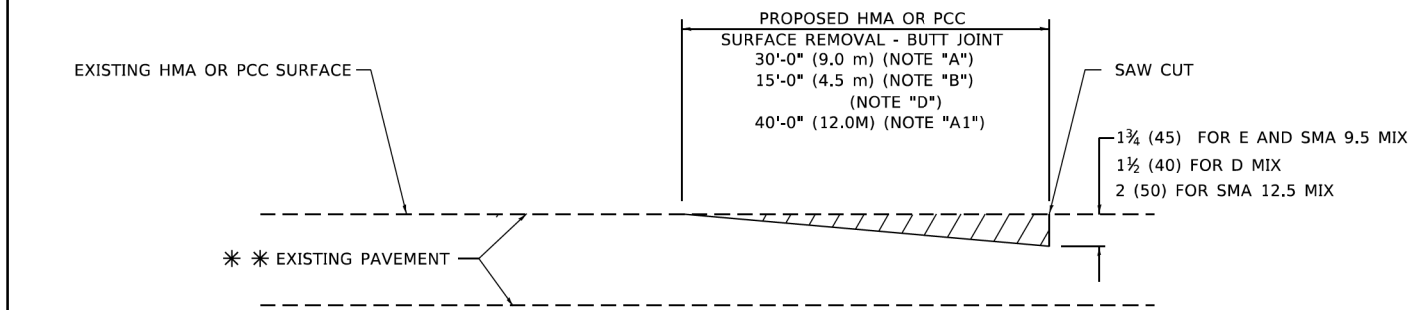


**HMA CONSTRUCTED TEMPORARY RAMP**

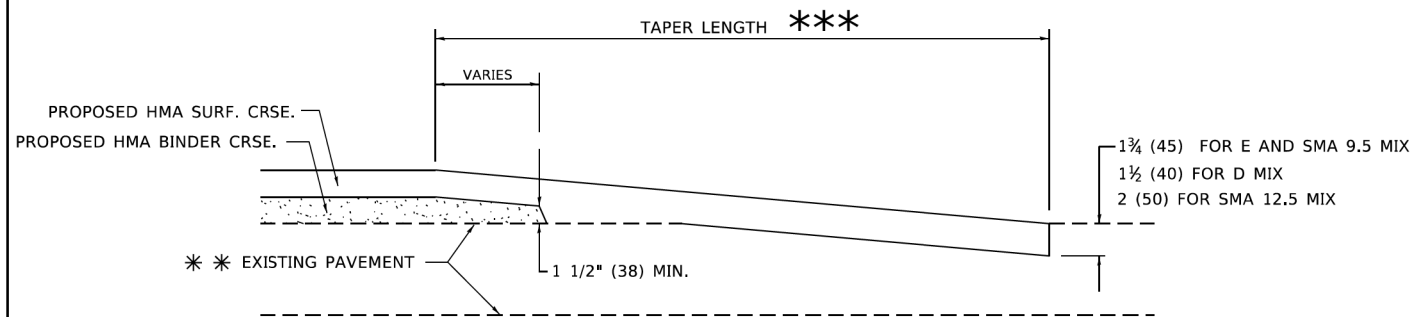
(FOR BUTT JOINT AND HMA TAPER SEE DETAIL BELOW)

**OPTION 2**

**TYPICAL TEMPORARY RAMP**



**BUTT JOINT DETAIL**



**HMA TAPER DETAIL**

**TYPICAL BUTT JOINT AND HMA TAPER FOR RESURFACING ONLY**

\*\*\* PC CONCRETE, HMA OR HMA RESURFACED PAVEMENT.

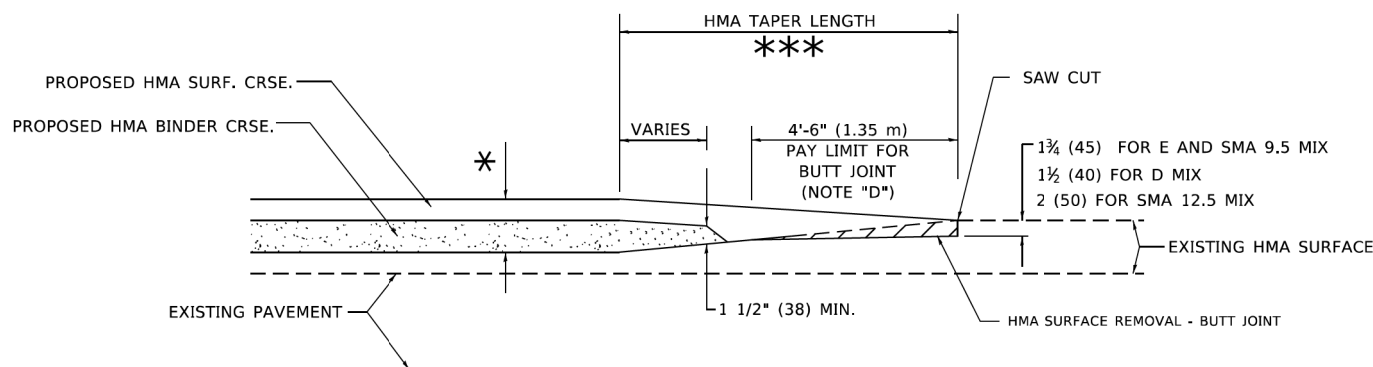
**GENERAL NOTES**

- A. MAINLINE ARTERIAL ROADWAYS AND MAJOR SIDE ROADS.
- A1. INTERSTATES
- B. MINOR SIDE ROADS.
- C. THE TEMP. RAMP SHALL BE CONSTRUCTED IMMEDIATELY UPON REMOVAL OF THE EXISTING HMA SURFACE.
- D. THE BUTT JOINT SHALL BE CONSTRUCTED IMMEDIATELY PRIOR TO PLACING THE PROPOSED HMA COURSES.
- E. TAPER THE TEMP. RAMP AT A RATE OF 3' - 4" (1.02m) PER 1 INCH (25 mm) OF MILLING THICKNESS.  
\* SEE TYPICAL SECTIONS FOR MILLING THICKNESS.
- F. SEE ARTICLE 406.08 AND 406.14 OF THE STANDARD SPECIFICATIONS FOR "HMA AND/OR PCC SURFACE REMOVAL, BUTT JOINT".  
\*\*\* 20'-0" (6.1 m) PER 1 (25) RESURFACING (NOTE "A")  
10'-0" (3.0 m) PER 1 (25) RESURFACING (NOTE "B")

**BASIS OF PAYMENT**

- 1. THE BUTT JOINT WILL BE PAID FOR AT THE CONTRACT UNIT PRICE PER SQUARE YARD (SQUARE METER) FOR "HOT-MIX ASPHALT SURFACE REMOVAL - BUTT JOINT" OR FOR "PORTLAND CEMENT CONCRETE SURFACE REMOVAL- BUTT JOINT".
- 2. THE TEMPORARY RAMP AND SAW CUT SHALL BE INCLUDED IN THE UNIT COST FOR HMA OR PCC SURFACE REMOVAL-BUTT JOINT.

ALL DIMENSIONS ARE IN INCHES (MILLIMETERS) UNLESS OTHERWISE SHOWN.



**BUTT JOINT AND HMA TAPER**

**TYPICAL BUTT JOINT AND HMA TAPER FOR MILLING AND RESURFACING**

MODEL: Default FILE: \\miller\pww\benby.com\PIV\DOT\Documents\DOT\_Offices\Bnby\1\Projects\Bnby\213\CA\AD\Bnby\CAD\Sheets\Bnby22.dgn

USER NAME = Lawrence,DeManche	DESIGNED - M. DE YONG	REVISED - A. ABBAS 03-21-97
	DRAWN -	REVISED - M. GOMEZ 04-06-01
PLOT SCALE = 100.0000' / in.	CHECKED -	REVISED - R. BORO 01-01-07
PLOT DATE = 11/18/2022	DATE - 06-13-90	REVISED - K. SMITH 11-18-22

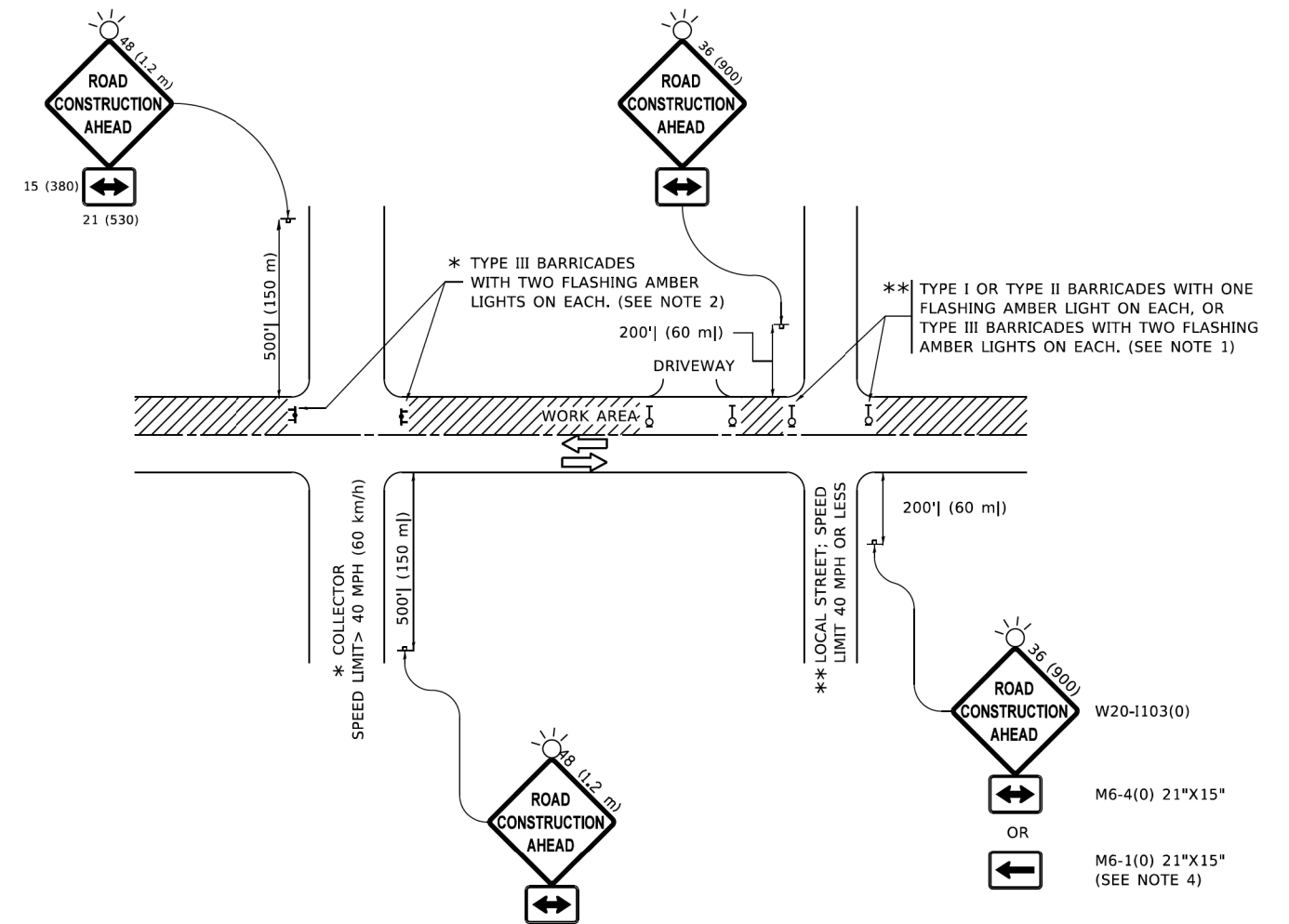
**STATE OF ILLINOIS  
DEPARTMENT OF TRANSPORTATION**

**BUTT JOINT AND HMA TAPER DETAILS**

SCALE: NONE SHEET 1 OF 1 SHEETS STA. TO STA.

F.A. RTE.	SECTION	COUNTY	TOTAL SHEETS	SHEET NO.
	21-00073-00-R5	MCHENRY	28	22
<b>BD400-05 BD-32</b>		CONTRACT NO. 61K97		
ILLINOIS FED. AID PROJECT 1N8P(452)				

MOOREL - Default  
FILE: N:\office\_paw\paw@illinois.gov\Projects\Documents\DOT - Offices\District 1\Projects\Dist1\21-0073\21-0073-01\CAD\Drawings\TC10.dgn



**NOTES:**

- 1. SIDE ROAD WITH A SPEED LIMIT OF 40 MPH (60 km/h) OR LESS AS SHOWN ON THE DRAWING AND AS DIRECTED BY THE ENGINEER:
  - a) ONE "ROAD CONSTRUCTION AHEAD" SIGN 36 x 36 (900x900) WITH A FLASHER MOUNTED ON IT APPROXIMATELY 200' (60 m) IN ADVANCE OF THE MAIN ROUTE.
  - b) THE CLOSED PORTION OF THE MAIN ROUTE SHALL BE PROTECTED BY BLOCKING WITH TYPE I, TYPE II OR TYPE III BARRICADES, 1/3 OF THE CROSS SECTION OF THE CLOSED PORTION.
- 2. SIDE ROAD WITH A SPEED LIMIT GREATER THAN 40 MPH (60 km/h) AS SHOWN ON THE DRAWING AND AS DIRECTED BY THE ENGINEER:
  - a) ONE "ROAD CONSTRUCTION AHEAD" SIGN 48 x 48 (1.2 m x 1.2 m) WITH A FLASHER MOUNTED ON IT APPROXIMATELY 500' (150 m) IN ADVANCE OF THE MAIN ROUTE.
  - b) BLOCKING WITH TYPE III BARRICADES, 1/2 OF THE CROSS SECTION OF THE CLOSED PORTION.
- 3. CONES MAY BE SUBSTITUTED FOR BARRICADES OR DRUMS AT HALF THE SPACING DURING DAY OPERATIONS. CONES SHALL BE A MINIMUM OF 28 (710) IN HEIGHT.
- 4. SIGNING AND THE WORK ZONE, A SINGLE HEADED ARROW (M6-1) SHALL BE USED IN LIEU OF THE DOUBLE HEADED ARROW (M6-4).
- 5. WHEN WORK IS BEING PERFORMED ON A SIDE ROAD OR DRIVEWAY, FOLLOW THE APPLICABLE STANDARD(S). THE DIRECTIONAL ARROW (M6-1 OR M6-4) SHALL BE COVERED OR REMOVED WHEN NO LONGER CONSISTENT WITH THE TRAFFIC CONTROL SET-UP.
- 6. ADVANCE WARNING SIGNS ARE TO BE OMITTED ON DRIVEWAYS UNLESS OTHERWISE SPECIFIED IN THE PLANS OR BY THE ENGINEER.
- 7. THE TRAFFIC CONTROL AND PROTECTION FOR SIDE ROADS, INTERSECTIONS, AND DRIVEWAYS SHALL BE INCLUDED IN THE COST OF SPECIFIED TRAFFIC CONTROL STANDARDS OR ITEMS.

All dimensions are in inches (millimeters) unless otherwise shown.

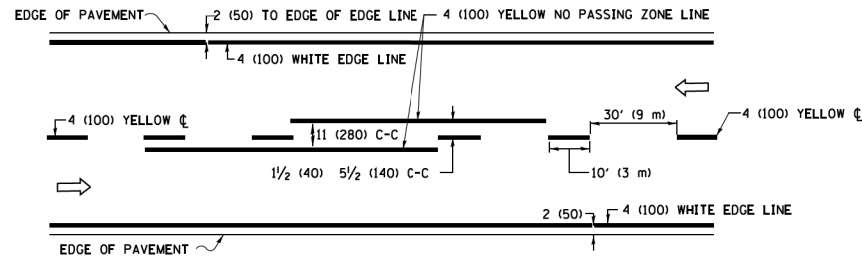
USER NAME = Lawrence,DeManche	DESIGNED - L.H.A.	REVISED - T. RAMMACHER 01-06-00
	DRAWN -	REVISED - A. SCHUETZE 07-01-13
PLOT SCALE = 100,0000' / in.	CHECKED -	REVISED - A. SCHUETZE 09-15-16
PLOT DATE = 5/3/2024	DATE - 06-89	REVISED - D. SENDERAK 05-03-24

**STATE OF ILLINOIS  
DEPARTMENT OF TRANSPORTATION**

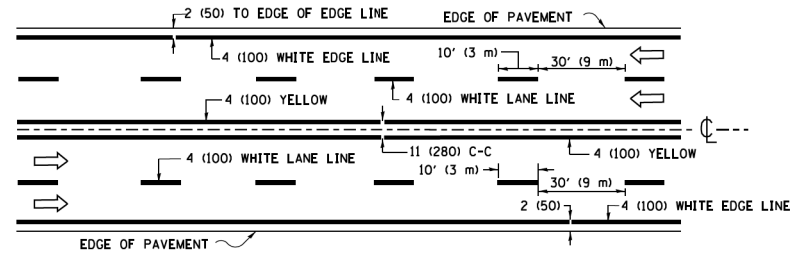
**TRAFFIC CONTROL AND PROTECTION FOR  
SIDE ROADS, INTERSECTIONS, AND DRIVEWAYS**

SCALE: NONE SHEET 1 OF 1 SHEETS STA. TO STA.

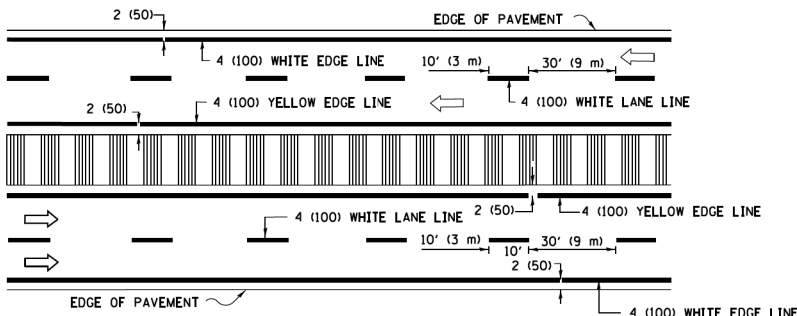
F.A. RTE.	SECTION	COUNTY	TOTAL SHEETS	SHEET NO.
	21-0073-00-R5	McHENRY	28	23
<b>TC-10</b>		CONTRACT NO. 61K97		
ILLINOIS FED. AID PROJECT 1N8P(452)				



**2-LANE ROADWAY**

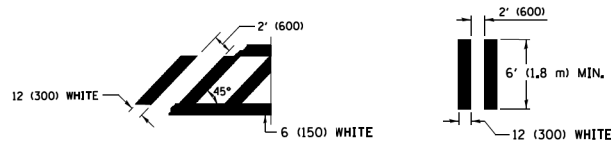
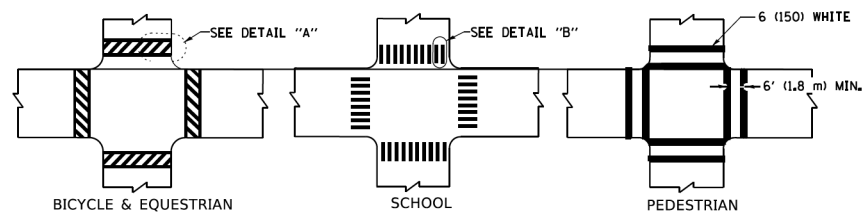


**MULTI-LANE UNDIVIDED**



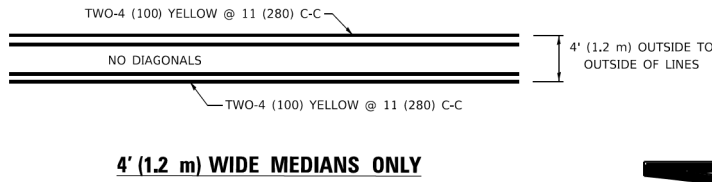
**MULTI-LANE DIVIDED WITH MEDIAN**

**TYPICAL LANE AND EDGE LINE MARKING**

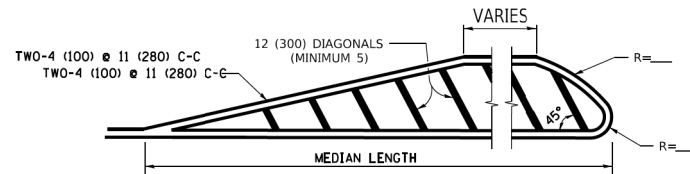


**TYPICAL CROSSWALK MARKING**

\* MARKINGS SHALL BE INSTALLED PARALLEL TO THE CENTERLINE OF THE ROAD WHICH IT CROSSES

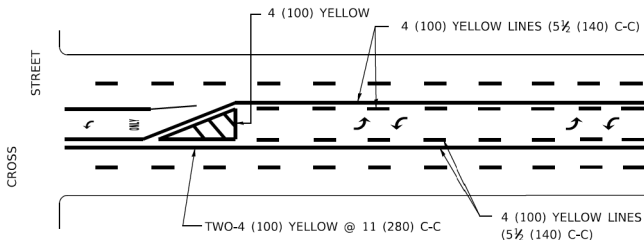


**4' (1.2 m) WIDE MEDIANS ONLY**

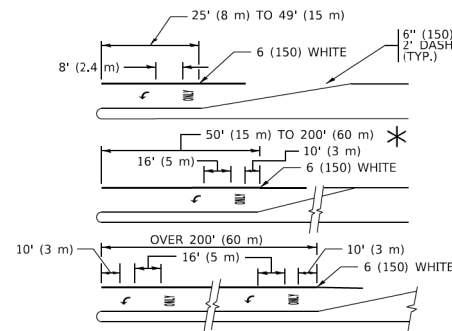


**MEDIANS OVER 4' (1.2 m) WIDE**

DIAGONAL LINE SPACING: 50' (15 m) C-C (LESS THAN 30MPH (50 km/h))  
75' (25 m) C-C 30MPH (50 km/h) TO 45MPH (70 km/h)  
150' (45 m) C-C (MORE THAN 45MPH (70 km/h))



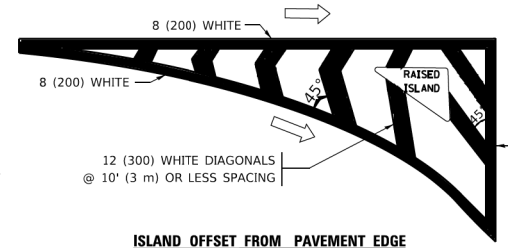
**MEDIAN WITH TWO-WAY LEFT TURN LANE  
TYPICAL PAINTED MEDIAN MARKING**



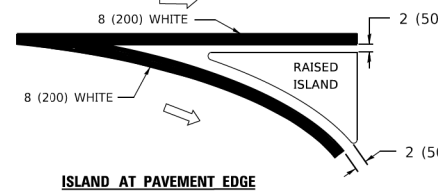
**TYPICAL LEFT (OR RIGHT) TURN LANE**

**TYPICAL TURN LANE MARKING**

FULL SIZE LETTERS 8' (2.4 m) AND ARROWS SHALL BE USED.  
AREA = 15.6 SQ. FT. (1.5 m<sup>2</sup>) ONLY AREA = 20.8 SQ. FT. (1.9 m<sup>2</sup>)  
\* TURN LANES IN EXCESS OF 400' (120 m) IN LENGTH MAY HAVE AN ADDITIONAL SET OF ARROW - "ONLY" INSTALLED MIDWAY BETWEEN THE OTHER TWO SETS OF ARROW - "ONLY".

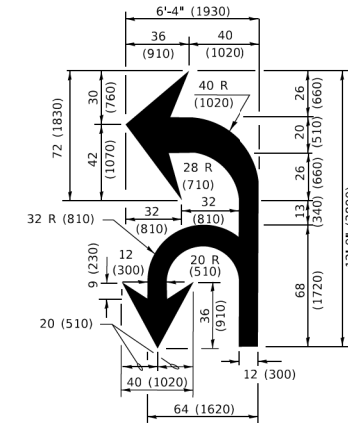


**ISLAND OFFSET FROM PAVEMENT EDGE**

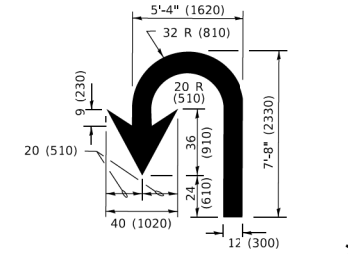


**ISLAND AT PAVEMENT EDGE**

**TYPICAL ISLAND MARKING**



**COMBINATION LEFT AND U-TURN**



**U-TURN**

**LANE REDUCTION TRANSITION**  
\* LANE REDUCTION ARROWS REQUIRED AT SPEEDS OF 45 MPH OR GREATER OR WHEN SPECIFIED IN PLANS.

D(FT)	SPEED LIMIT
345	30
425	35
500	40
580	45
665	50
750	55

TYPE OF MARKING	WIDTH OF LINE	PATTERN	COLOR	SPACING / REMARKS
CENTERLINE ON 2 LANE PAVEMENT	4 (100)	SKIP-DASH	YELLOW	10' (3 m) LINE WITH 30' (9 m) SPACE
CENTERLINE ON MULTI-LANE UNDIVIDED PAVEMENT	2 @ 4 (100)	SOLID	YELLOW	11 (280) C-C
NO PASSING ZONE LINES: FOR ONE DIRECTION FOR BOTH DIRECTIONS	4 (100) 2 @ 4 (100)	SOLID SOLID	YELLOW YELLOW	5 1/2 (140) C-C FROM SKIP-DASH CENTERLINE 11 (280) C-C OMIT SKIP-DASH CENTERLINE BETWEEN
LANE LINES	4 (100) 5 (125) ON FREEWAYS	SKIP-DASH SKIP-DASH	WHITE WHITE	10' (3 m) LINE WITH 30' (9 m) SPACE
DOTTED LINES (EXTENSIONS OF CENTER, LANE OR TURN LANE MARKINGS)	SAME AS LINE BEING EXTENDED	SKIP-DASH	SAME AS LINE BEING EXTENDED	2' (600) LINE WITH 6' (1.8 m) SPACE
EDGE LINES	4 (100)	SOLID	YELLOW-LEFT WHITE-RIGHT	OUTLINE MEDIANS IN YELLOW
TURN LANE MARKINGS	6 (150) LINE; FULL SIZE LETTERS & SYMBOLS (8' (2.4m))	SOLID	WHITE	SEE TYPICAL TURN LANE MARKING DETAIL
TWO WAY LEFT TURN MARKING	2 @ 4 (100) EACH DIRECTION 8' (2.4m) LEFT ARROW	SKIP-DASH AND SOLID IN PAIRS	YELLOW WHITE	10' (3 m) LINE WITH 30' (9 m) SPACE FOR SKIP-DASH; 5 1/2 (140) C-C BETWEEN SOLID LINE AND SKIP-DASH LINE SEE TYPICAL TWO-WAY LEFT TURN MARKING DETAIL
CROSSWALK LINES (PEDESTRIAN) A. DIAGONALS (BIKE & EQUESTRIAN) B. LONGITUDINAL BARS (SCHOOL)	2 @ 6 (150) 2' (600) APART 2' (600) APART	SOLID SOLID SOLID	WHITE WHITE WHITE	NOT LESS THAN 6' (1.8 m) APART SEE TYPICAL CROSSWALK MARKING DETAILS.
STOP LINES	24 (600)	SOLID	WHITE	PLACE 4' (1.2 m) IN ADVANCE OF AND PARALLEL TO CROSSWALK, IF PRESENT. OTHERWISE, PLACE AT DESIRED STOPPING POINT. PARALLEL TO CROSSROAD CENTERLINE, WHERE POSSIBLE.
PAINTED MEDIANS	2 @ 4 (100) WITH 12 (300) DIAGONALS @ 45° NO DIAGONALS USED FOR 4' (1.2 m) WIDE MEDIANS	SOLID	YELLOW: TWO WAY TRAFFIC WHITE: ONE WAY TRAFFIC	11 (280) C-C FOR THE DOUBLE LINE SEE TYPICAL PAINTED MEDIAN MARKING.
GORE MARKING AND CHANNELIZING LINES	8 (200) WITH 12 (300) DIAGONALS @ 45°	SOLID	WHITE	DIAGONALS: 15' (4.5 m) C-C (LESS THAN 30MPH (50 km/h)) 20' (6 m) C-C 30MPH (50 km/h) TO 45MPH (70 km/h) 30' (9 m) C-C (OVER 45MPH (70 km/h))
RAILROAD CROSSING	24 (600) TRANSVERSE LINES: "RR" 15' 6" (1.8 m) LETTERS; 16 (400) LINE FOR "X"	SOLID	WHITE	SEE STATE STANDARD 780001 AREA OF: "R"=3.6 SQ. FT. (0.33 m <sup>2</sup> ) EACH "X"=54.0 SQ. FT. (5.0 m <sup>2</sup> )
SHOULDER DIAGONALS (REQUIRED FOR SHOULDERS ≥ 8')	12 (300) @ 45°	SOLID	WHITE - RIGHT YELLOW - LEFT	50' (15 m) C-C (LESS THAN 30MPH (50 km/h)) 75' (25 m) C-C (30 MPH (50 km/h) TO 45MPH (70 km/h)) 150' (45 m) C-C (OVER 45MPH (70 km/h))
U TURN ARROW	SEE DETAIL	SOLID	WHITE	16.3 SF
2 ARROW COMBINATION LEFT AND U TURN	SEE DETAIL	SOLID	WHITE	30.4 SF

FOR FURTHER DETAILS ON PAVEMENT MARKING REFER TO STANDARD SPECIFICATIONS FOR ROAD AND BRIDGE CONSTRUCTION AND STATE STANDARD 780001.

All dimensions are in inches (millimeters) unless otherwise shown.

USER NAME = footej	DESIGNED - EVERS	REVISED - C. JUCIUS 09-09-09
PLOT SCALE = 50.0000' / 1"	DRAWN -	REVISED - C. JUCIUS 07-01-13
PLOT DATE = 3/4/2019	CHECKED -	REVISED - C. JUCIUS 12-21-15
	DATE - 03-19-90	REVISED - C. JUCIUS 04-12-16

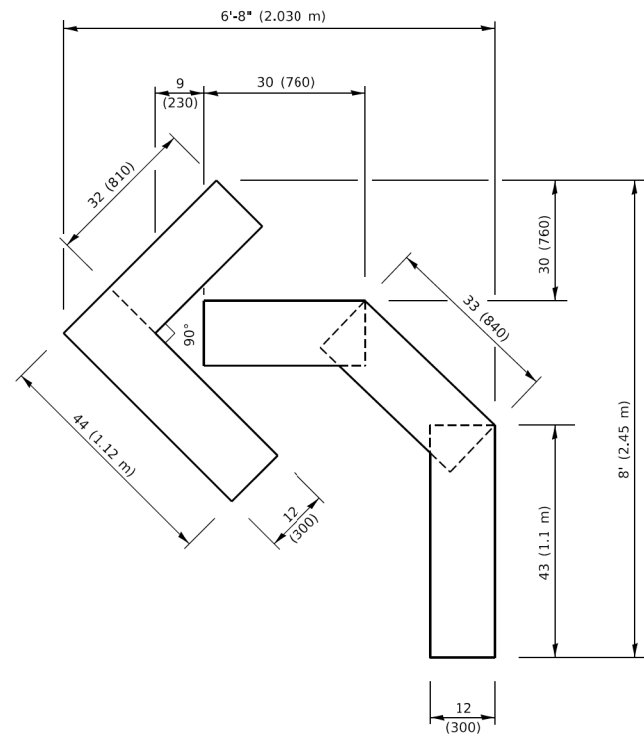
**STATE OF ILLINOIS  
DEPARTMENT OF TRANSPORTATION**

**DISTRICT ONE  
TYPICAL PAVEMENT MARKINGS**

SCALE: NONE SHEET 1 OF 2 SHEETS STA. TO STA.

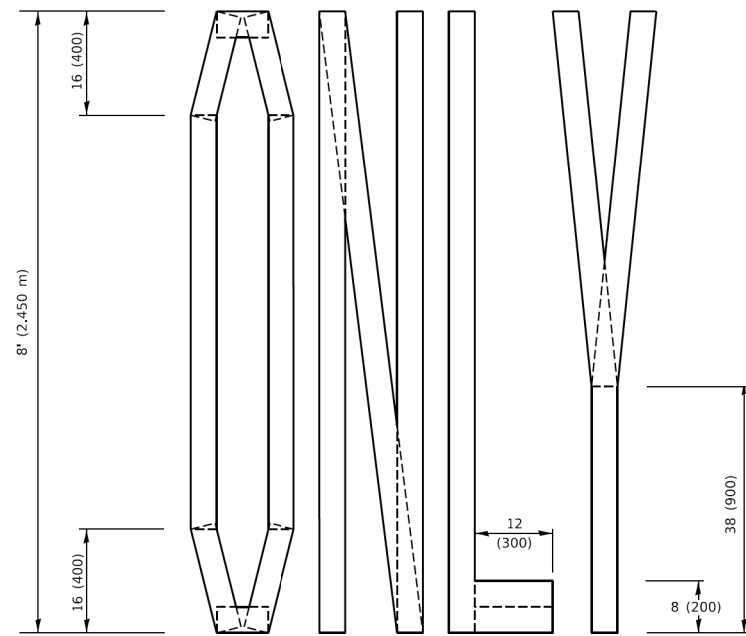
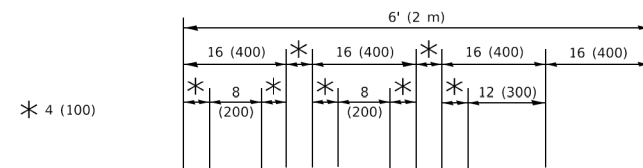
F.A. RTE.	SECTION	COUNTY	TOTAL SHEETS	SHEET NO.
	21-00073-00-R5	McHENRY	28	24
TC-13			CONTRACT NO. 61K97	
ILLINOIS		FED. AID PROJECT 1NRP(452)		





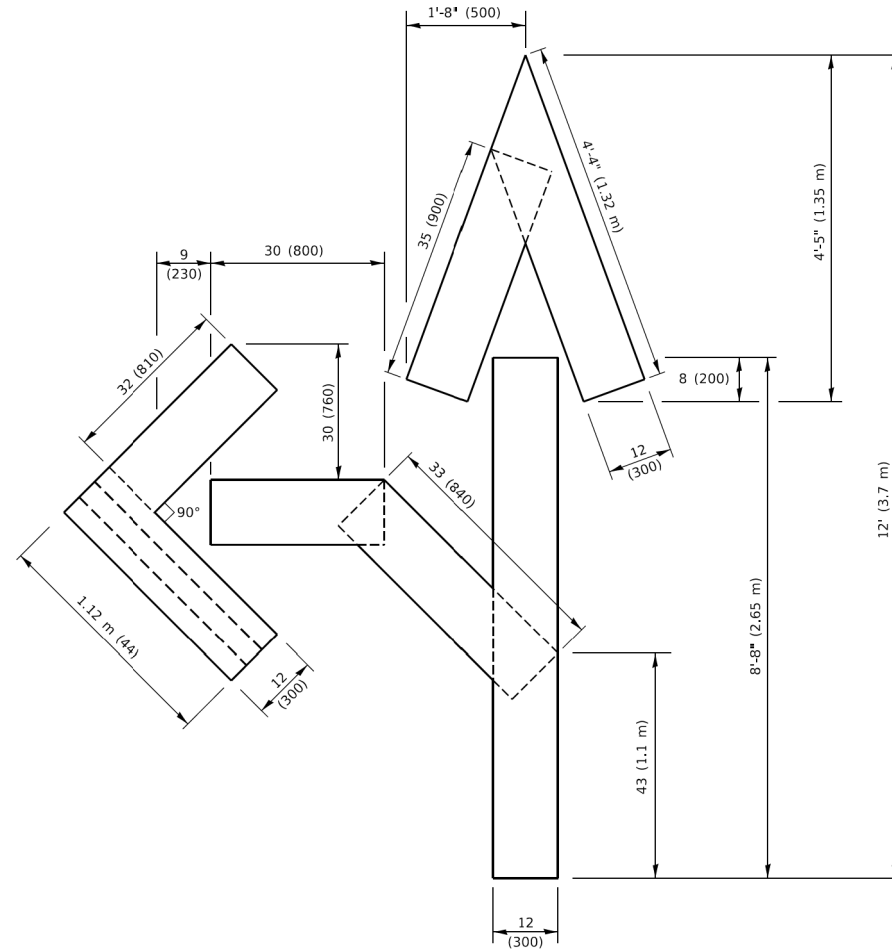
**QUANTITY**

4 (100) LINE = 45.5 ft. (13.9 m)  
15.2 sq. ft. (1.41 sq. m)



**QUANTITY**

4 (100) LINE = 64.1 ft. (19.5 m)  
21.4 sq. ft. (1.99 sq. m)

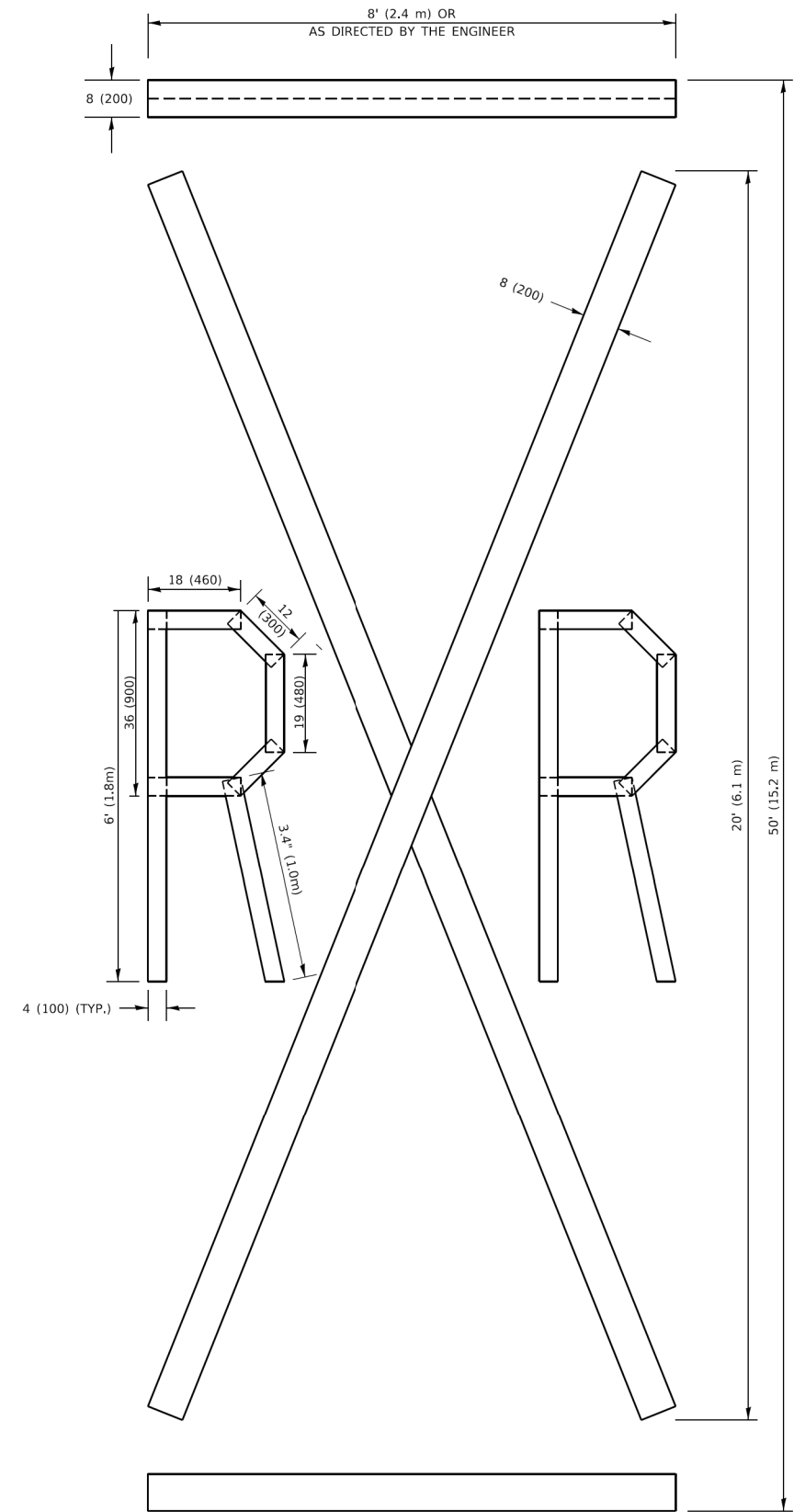


**QUANTITY**

4 (100) LINE = 82.5 ft. (25.1 m)  
27.5 sq. ft. (2.53 sq. m)

**NOTE:**

ALL QUANTITIES OF PLACEMENT ARE REPRESENTED IN LINEAR FEET OF 4" LINES TO MATCH THE 4" TEMPORARY TAPE PAY ITEM AND REPRESENTS THE TOTAL QUANTITY OF 4" TAPE REQUIRED.



**QUANTITY**

4 (100) LINE = 225.9 ft. (68.9 m)  
75.3 sq. ft. (6.99 sq. m)

All dimensions are in inches (millimeters) unless otherwise shown.

MODEL: Default  
FILE NAME: P:\ILLINOIS\BID\NTEG\Illinois.gov\PWIDOT\Documents\DOT\_Offices\Berket\_1\Projects\IDS\S22\2-24\CAD\Bna\CAD\sheet116.dgn

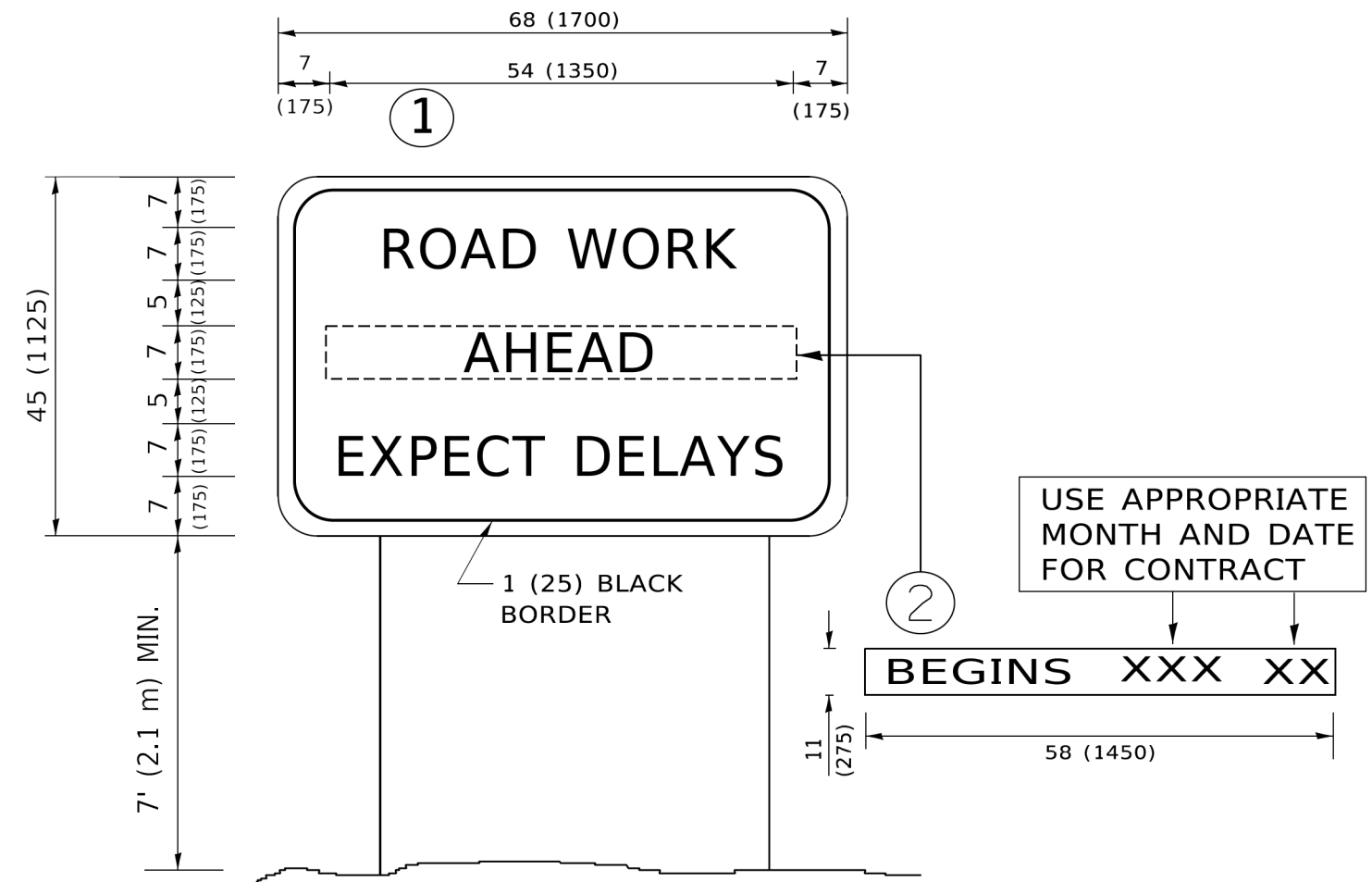
USER NAME = footemj	DESIGNED -	REVISED - T. RAMMACHER 03-02-98
	DRAWN -	REVISED - E. GOMEZ 08-28-00
PLOT SCALE = 50.0068" / in.	CHECKED -	REVISED - E. GOMEZ 08-28-00
PLOT DATE = 3/4/2019	DATE - 09-18-94	REVISED - A. SCHUETZE 09-15-16

**STATE OF ILLINOIS  
DEPARTMENT OF TRANSPORTATION**

**SHORT TERM PAVEMENT MARKING LETTERS AND SYMBOLS**

SCALE: NONE SHEET 1 OF 1 SHEETS STA. TO STA.

F.A. RTE.	SECTION	COUNTY	TOTAL SHEETS	SHEET NO.
	21-00073-00-R5	MCHEMRY	28	25
<b>TC-16</b>			CONTRACT NO. 61K97	
ILLINOIS FED. AID PROJECT 1NRP(452)				



**NOTES:**

1. USE BLACK LETTERING ON ORANGE BACKGROUND.
2. ERECT SIGNS IN ADVANCE OF THE LOCATION FOR THE "ROAD CONSTRUCTION AHEAD" SIGN AT LOCATIONS AS DIRECTED BY THE ENGINEER.
3. ERECT SIGN ① WITH INSTALLED PANEL ② ONE WEEK PRIOR TO THE START OF CONSTRUCTION.
4. REMOVE PANEL ② SOON AFTER THE START OF CONSTRUCTION.
5. SEE SPECIAL PROVISION FOR "TEMPORARY INFORMATION SIGNING" FOR ADDITIONAL INFORMATION.
6. ONE SIGN ASSEMBLY EQUALS 25.70 SQ. FT. (2.3 SQ. M.)
7. SHALL BE PAID FOR AS TEMPORARY INFORMATION SIGNING.

ALL DIMENSIONS ARE IN INCHES (MILLIMETERS) UNLESS OTHERWISE SHOWN.

MODEL: Default  
 FILE: \\miles.pw.us\llob48\BID\NTEG\Illinois.gov\PWIDOT\Documents\DOT\_Offices\District\_1\Projects\Dist1\2017-21\CADD\Info\CAD\Sheet122.dgn

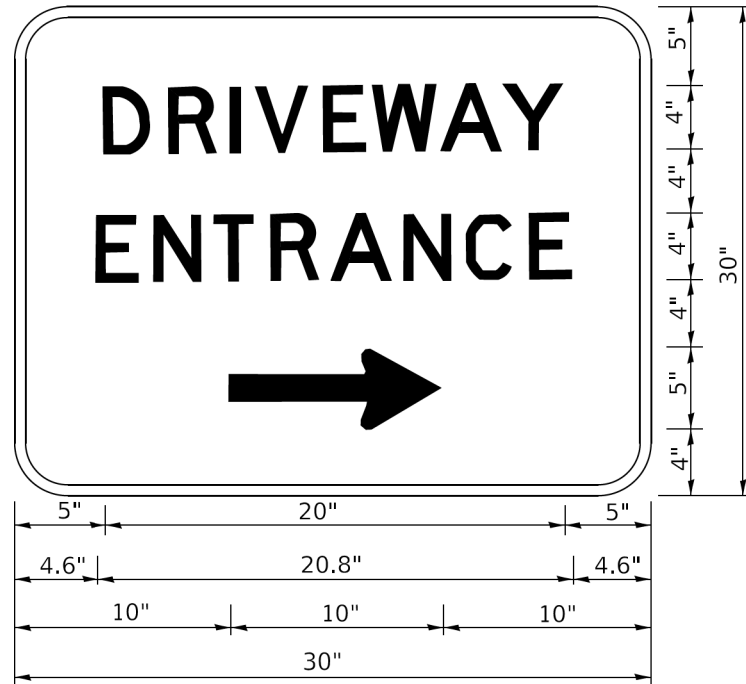
USER NAME = footemj	DESIGNED -	REVISED - R. MIRS 09-15-97
	DRAWN -	REVISED - R. MIRS 12-11-97
PLOT SCALE = 50,0000' / 1"	CHECKED -	REVISED - T. RAMMACHER 02-02-99
PLOT DATE = 3/4/2019	DATE -	REVISED - C. JUCIUS 01-31-07

**STATE OF ILLINOIS  
DEPARTMENT OF TRANSPORTATION**

**ARTERIAL ROAD  
INFORMATION SIGN**

SCALE: NONE SHEET 1 OF 1 SHEETS STA. TO STA.

F.A. RTE.	SECTION	COUNTY	TOTAL SHEETS	SHEET NO.
	21-00073-00-RS	McHENRY	28	26
<b>TC-22</b>			CONTRACT NO. 61K97	
ILLINOIS FED. AID PROJECT 1N8P(452)				



3.0" RADIUS, 0.5" BORDER, WHITE ON GREEN; REFLECTORIZED  
 "DRIVEWAY" D; "ENTRANCE" D; STANDARD ARROW CUSTOM 12.0" x 5.0"

**NOTES:**

1. HALF OF THE SIGNS WILL REQUIRE A LEFT HAND FACING ARROW.
2. TWO SIGNS SHALL BE USED AT EACH COMMERCIAL ENTRANCE PLACED BACK-TO-BACK: ONE WITH A RIGHT HAND ARROW (SHOWN) SHALL BE PLACED ON THE NEAR RIGHT SIDE THE DRIVEWAY AND ONE WITH A LEFT HAND ARROW SHALL BE PLACED ON THE FAR LEFT SIDE OF THE DRIVEWAY.
3. SIGNS TO BE PAID FOR AS ITEM "TEMPORARY INFORMATION SIGNING".

MODEL: Default  
 FILE: \\millec-prod\planroom\edc\_illinois.gov\PI\DOT\Documents\DOT\_Offices\District\_1\Projects\DH\427231\CADD\BNA\CAD\Sheet\126.dgn

USER NAME = leysa	DESIGNED -	REVISED - C. JUCIUS 02-15-07
	DRAWN -	REVISED -
PLOT SCALE = 50,0000' / 1"	CHECKED -	REVISED -
PLOT DATE = 8/6/2021	DATE -	REVISED -

**STATE OF ILLINOIS  
 DEPARTMENT OF TRANSPORTATION**

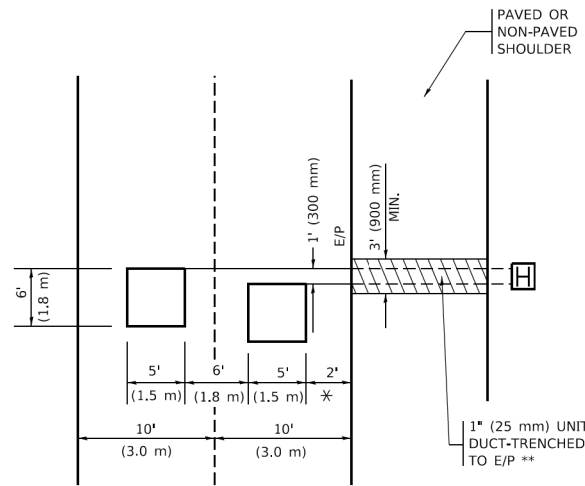
**DRIVEWAY ENTRANCE SIGNING**

SCALE: NONE SHEET 1 OF 1 SHEETS STA. TO STA.

F.A. RTE.	SECTION	COUNTY	TOTAL SHEETS	SHEET NO.
	21-00073-00-R5	McHENRY	28	27
<b>TC-26</b>			CONTRACT NO. 61K97	
ILLINOIS FED. AID PROJECT 1N8P(452)				

**LOOPS NEXT TO SHOULDERS**

PROVIDE A PAVEMENT REPLACEMENT NOTE WHICH SHOULD EQUAL 3' (900 mm) X WIDTH OF PAVED SHOULDER.

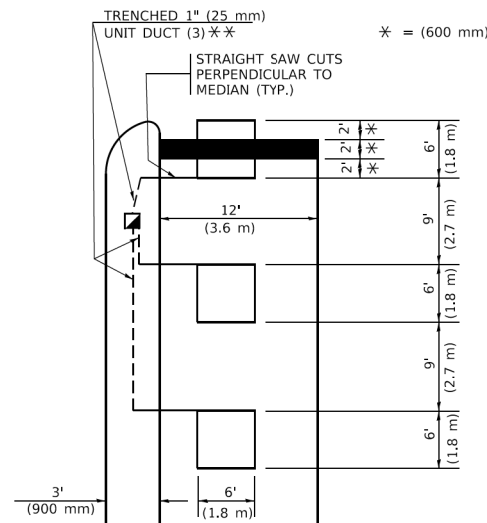


\* = (600 mm)

\*\* UNIT DUCT IS TO BE SHOWN ON PLAN SHEETS BUT SHALL NOT BE INCLUDED IN THE PAY ITEMS.

**LEFT TURN LANES WITH MEDIANS**  
**VOLUME DENSITY ("FAR OUT" DETECTION)**  
**ON SAME APPROACH**  
**(PROTECTED / PERMITTED LEFT TURN PHASING)**

HANDHOLE LOCATION MAY VARY DEPENDING ON GEOMETRICS AND DESIGN OF TRAFFIC SIGNALS. HEAVY-DUTY HANDHOLES TO BE USED WHEN THE MEDIAN IS MOUNTABLE. REFER TO STANDARD 814001 TO ENSURE THAT HANDHOLE FITS IN MEDIAN.

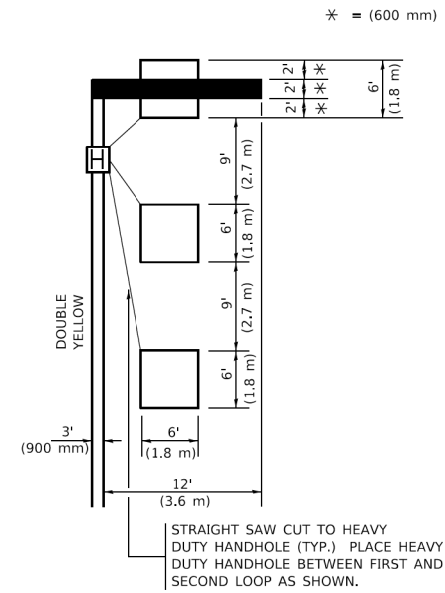


\* = (600 mm)

\*\* UNIT DUCT IS TO BE SHOWN ON PLAN SHEETS BUT SHALL NOT BE INCLUDED IN THE PAY ITEMS.

NOTE: DUAL LEFT TURNS NOT SHOWN REFER TO PLAN SHEET FOR DETECTOR LOOP REPLACEMENT

**LEFT TURN LANES WITHOUT MEDIANS**  
**VOLUME DENSITY ("FAR OUT" DETECTION)**  
**ON SAME APPROACH**  
**(PROTECTED / PERMITTED LEFT TURN PHASING)**



\* = (600 mm)

NOTE: DUAL LEFT TURNS NOT SHOWN REFER TO PLAN SHEET FOR DETECTOR LOOP REPLACEMENT

**NOTES:**

**VEHICLES LOOP DETECTORS**

- \* ALL LEAD IN CABLE SHALL BE TWO CONDUCTOR NO. 14 TWISTED, SHIELDED.
- \* EACH DETECTOR LOOP SHALL HAVE ITS OWN SAW CUT FROM THE LOOP TO THE EDGE OF PAVEMENT OR TO A HANDHOLE IN THE PAVEMENT.
- \* EACH DETECTOR LOOP SHALL HAVE ITS OWN ONE INCH (25 mm) UNIT DUCT BETWEEN THE EDGE OF PAVEMENT AND THE FIRST HANDHOLE OR JUNCTION BOX. EACH UNIT DUCT RUN SHALL BE SHOWN ON THE PLANS BY THE DESIGNER, BUT SHALL NOT BE PAID FOR SEPARATLY. THIS ITEM IS INCIDENTAL TO THE PAY ITEM FOR DETECTOR LOOPS.
- \* ONE DIMENSION OF ALL DETECTOR LOOPS SHALL BE SIX FEET (1.8 m)
- \* EACH LANE OF NON-LOCKING, PRESENCE DETECTION AND EACH LANE OF A DOUBLE LEFT TURN LANE REQUIRES A SEPARATE INDUCTIVE LOOP DETECTOR AND LEAD IN CABLE.
- \* WHEN NON-LOCKING, PRESENCE DETECTION IS USED, MORE THAN ONE LOOP PER LANE IS REQUIRED BEHIND THE STOP BAR (i.e. 1-1/2, 1-3/4, 2).
- \* WHEN SYSTEM LOOPS ARE REQUIRED ON AN APPROACH OF AN INTERSECTION, THE LOOPS USED FOR VOLUME DENSITY AND INTERSECTION TIMING SHALL ALSO BE USED AS SYSTEM DETECTORS. EACH ONE OF THESE TYPE OF LOOPS REQUIRES A SEPARATE TWO CONDUCTOR NO. 14 TWISTED SHIELDED CABLE AND A SEPARATE INDUCTIVE LOOP DETECTOR WHEN NEW CONTROLLERS ARE UTILIZED. THE DESIGNER SHALL LABEL THESE TYPES OF LOOPS AS "INTERSECTION AND SAMPLING (SYSTEM) DETECTORS" ON THE SIGNAL LAYOUT, THE INTERCONNECT PLAN AND THE SYSTEM CABLE PLAN. WHEN AN EXISTING CONTROLLER IS UTILIZED FOR THIS TYPE OF DETECTION, THE PAY ITEM "INDUCTIVE LOOP DETECTOR WITH SYSTEM OUTPUT" SHOULD BE USED.

**PLACEMENT OF DETECTORS**

THE FOLLOWING FIGURES REPRESENT THE MOST COMMON DETECTOR LOOP LOCATIONS AND SIZES. ADJUSTMENTS WILL BE NECESSARY FOR SPECIFIC GEOMETRIC CONSIDERATIONS.

LOCATIONS AND DEMENSIONS OF DETECTOR LOOPS ARE REQUIRED ON ALL SIGNAL LAYOUT PLAN SHEETS.

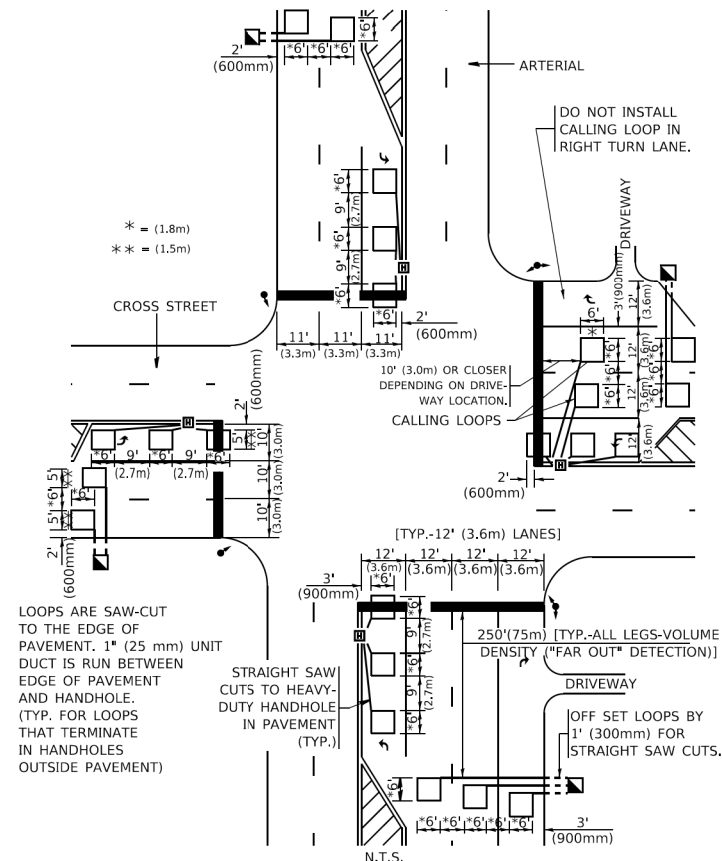
"FAR OUT" DETECTION REFERS TO LOCKING, PRESENCE TYPE DETECTION LOCATED IN THRU LANES, RIGHT TURN LANES, AND RIGHT TURN LANE TAPER AREAS (IF APPLICABLE), USUALLY 250' (75 m) IN ADVANCE OF STOP BARS. "UPTIGHT" DETECTION REFERS TO NON-LOCKING PRESENCE TYPE DETECTION LOCATED IN ALL LANES AND 10'-15' (3.0 m-4.5 m) BEHIND THE CROSSING STREET'S EDGE OF PAVEMENT EXTENDED.

**NOTE:**

ALL DETAILS AND NOTES SHOWN ARE FROM THE I.D.O.T. DISTRICT 1 TRAFFIC SIGNAL DESIGN GUIDELINES DATED JANUARY 1995

THIS DRAWING HAS BEEN PREPARED TO ASSIST THE RESIDENT ENGINEER FOR ALL ROADWAY RESURFACING OR S.M.A.R.T. PROJECTS WHERE THE DIMENSIONS ARE NOT SHOWN ON THE PLANS AND THE FINAL LOCATIONS FOR CROSSWALKS OR STOP BARS ARE NOT DETERMINED.

**ARTERIAL-VOLUME DENSITY ("FAR OUT" DETECTION)**  
**CROSS STREET-NON VOLUME DENSITY ("FAR OUT" DETECTION)**



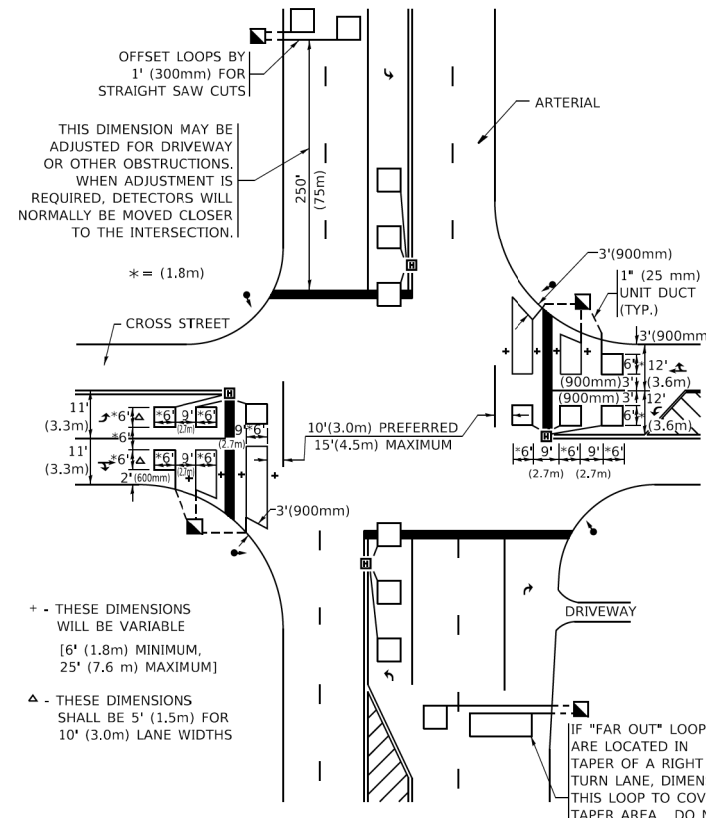
\* = (1.8m)  
 \*\* = (1.5m)

LOOPS ARE SAW-CUT TO THE EDGE OF PAVEMENT. 1" (25 mm) UNIT DUCT IS RUN BETWEEN EDGE OF PAVEMENT AND HANDHOLE. (TYP. FOR LOOPS THAT TERMINATE IN HANDHOLES OUTSIDE PAVEMENT)

STRAIGHT SAW CUTS TO HEAVY-DUTY HANDHOLE IN PAVEMENT (TYP.)

**DETAIL 1**  
 N.T.S.

**ARTERIAL-VOLUME DENSITY ("FAR OUT" DETECTION)**  
**CROSS STREET-NON VOLUME DENSITY ("UPTIGHT" PRESENCE DETECTION)**



THIS DIMENSION MAY BE ADJUSTED FOR DRIVEWAY OR OTHER OBSTRUCTIONS. WHEN ADJUSTMENT IS REQUIRED, DETECTORS WILL NORMALLY BE MOVED CLOSER TO THE INTERSECTION.

+ - THESE DIMENSIONS WILL BE VARIABLE [6' (1.8m) MINIMUM, 25' (7.6 m) MAXIMUM]

Δ - THESE DIMENSIONS SHALL BE 5' (1.5m) FOR 10' (3.0m) LANE WIDTHS

IF "FAR OUT" LOOPS ARE LOCATED IN TAPER OF A RIGHT TURN LANE, DIMENSION THIS LOOP TO COVER TAPER AREA. DO NOT COVER THE LEFT TURN LANE OR LEFT TURN LANE TAPER.

**DETAIL 2**  
 N.T.S.

**STATE OF ILLINOIS**  
**DEPARTMENT OF TRANSPORTATION**

**DISTRICT 1 - DETECTOR LOOP INSTALLATION**  
**DETAILS FOR ROADWAY RESURFACING**

SCALE: NONE SHEET 1 OF 1 SHEETS STA. TO STA.

F.A. RTE.	SECTION	COUNTY	TOTAL SHEETS	SHEET NO.
	21-00073-00-R5	McHENRY	28	28
TS-07		CONTRACT NO. 61K97		
ILLINOIS / FED. AID PROJECT / INR(452)				