

FEDERAL AID PROGRAM ENGINEER: CARMEN E. RAMOS, P.E., SCHAUMBURG, IL

01-17-2025 LETTING ITEM 094

STATE OF ILLINOIS
DEPARTMENT OF TRANSPORTATION

F.A.U. RTE.	SECTION	COUNTY	TOTAL SHEETS	SHEET NO.
0079	24-00013-00-RS	MCHENRY	18	1
FED. ROAD DIST. NO 1		ILLINOIS	CONTRACT NO. 61L00	

FOR INDEX OF SHEETS, SEE SHEET NO. 2
FOR HIGHWAY STANDARDS, SEE SHEET NO. 2

TRAFFIC DATA

ADT: 2023 TRAFFIC
W WONDER LAKE ROAD 625 VPD

ROADWAY
W WONDER LAKE ROAD

SPEED LIMIT
45 MPH

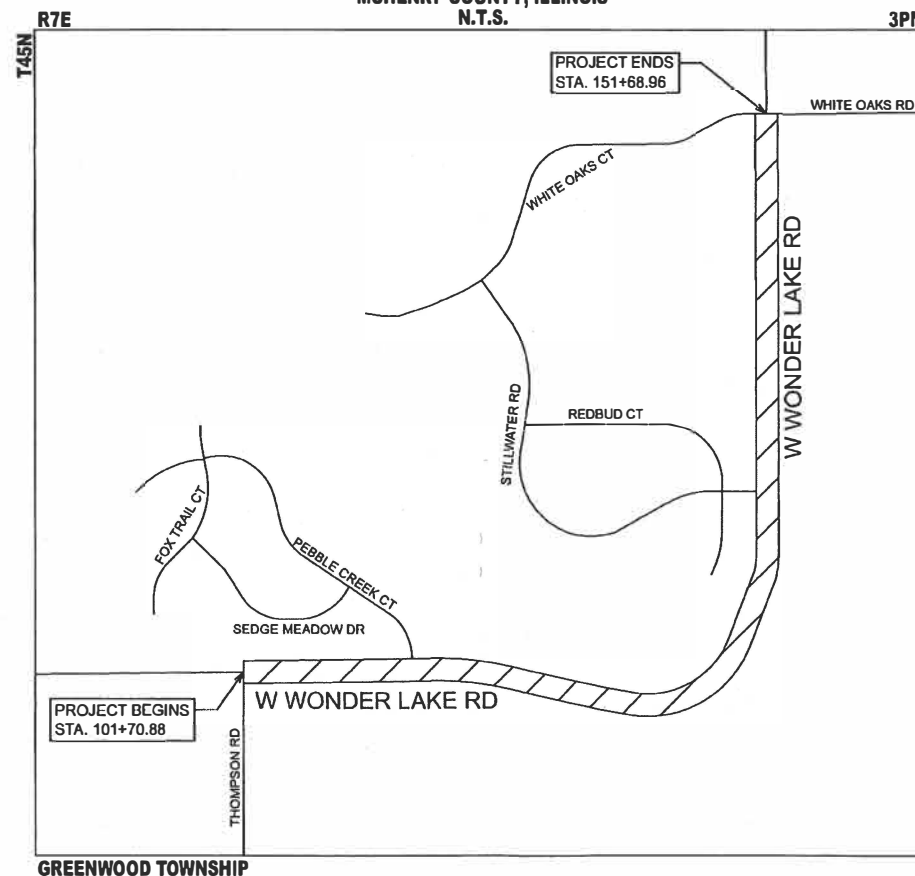
DESIGN SPEED
45 MPH

DESIGN DESIGNATION

W WONDER LAKE ROAD - MINOR COLLECTOR

PLAN FOR PROPOSED
FEDERAL AID HIGHWAY
TR 0079 (W WONDER LAKE ROAD)
FROM THOMPSON ROAD TO WHITE OAKS ROAD
ROAD RESURFACING IMPROVEMENTS
SECTION 24-00013-00-RS
PROJECT 5QVP (130)
MCHENRY COUNTY
C-91-040-25

PROJECT LOCATION MAP
MCHENRY COUNTY, ILLINOIS
N.T.S.

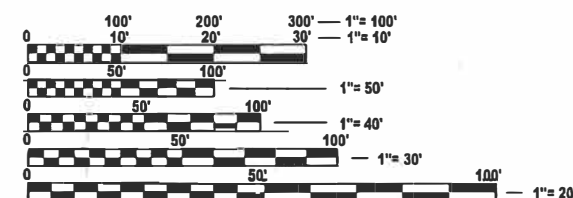


GREENWOOD TOWNSHIP

PROJECT LENGTH
GROSS LENGTH = 4998 FT. = 0.947 MILE
NET LENGTH = 4998 FT. = 0.947 MILE



LOCATION OF SECTION INDICATED THUS: -



FULL SIZE PLANS HAVE BEEN PREPARED USING STANDARD
ENGINEERING SCALES. REDUCED SIZED PLANS WILL NOT
CONFORM TO STANDARD SCALES. IN MAKING MEASUREMENTS
ON REDUCED PLANS, THE ABOVE SCALES MAY BE USED.

J.U.L.I.E.
JOINT UTILITY LOCATION INFORMATION FOR EXCAVATION
1-800-892-0123
OR 811

PROJECT ENGINEER: B. BELGRAVE
PROJECT MANAGER: J. STRZALKA

CONTRACT NO. 61L00



JEFFREY J. STRZALKA, P.E.
EXPIRES 1-30-25

STATE OF ILLINOIS DEPARTMENT OF TRANSPORTATION	
APPROVED	<i>[Signature]</i> OCT 27 2024 VILLAGE OF WONDER LAKE
PASSED	<i>[Signature]</i> NOV 6 2024 DISTRICT ONE ENGINEER OF LOCAL ROADS AND STREETS
RELEASED FOR BID BASED ON LIMITED REVIEW	<i>[Signature]</i> NOV 6 2024 REGIONAL ENGINEER

PRINTED BY THE AUTHORITY
OF THE STATE OF ILLINOIS

INDEX OF SHEETS

1		COVER SHEET
2		INDEX OF SHEETS, STATE STANDARDS, DISTRICT ONE DETAILS AND GENERAL NOTES
3	- 5	SUMMARY OF QUANTITIES
6	- 7	TYPICAL SECTIONS
8	- 9	RESURFACING PLAN
10	- 12	CONSTRUCTION DETAIL
13	- 18	IDOT DISTRICT 1 DETAILS

DISTRICT ONE DETAILS

STANDARD NO.	LIST OF DESCRIPTION
BD-24	CURB OR CURB AND GUTTER REMOVAL AND REPLACEMENT
BD-32	BUTT JOINT AND HMA TAPER DETAIL
TC-10	TRAFFIC CONTROL AND PROTECTION FOR SIDE ROADS, INTERSECTIONS, AND DRIVEWAYS
TC-13	DISTRICT ONE TYPICAL PAVEMENT MARKINGS
TC-16	SHORT TERM PAVEDMENT MARKING LETTERS AND SYMBOLS
TC-22	ARTERIAL ROAD INFORMATION SIGN

STATE STANDARDS

STANDARD NO.	LIST OF DESCRIPTION
000001-08	STANDARD SYMBOLS, ABBREVIATIONS AND PATTERNS
424001-12	PERPENDICULAR CURB RAMPS FOR SIDEWALKS
424021-07	DEPRESSED CORNER FOR SIDEWALKS
442201-03	CLASS C&D PATCHES
604051-04	FRAME AND GRATE TYPE 11
606001-08	CONCRETE CURB TYPE B AND COMBINATION CONCRETE CURB AND GUTTER
701001-02	OFF-RD OPERATIONS, 2L, 2W, MORE THAN 15'
701201-05	LANE CLOSURE, 2L, 2W, DAY ONLY, 45MPH OR MORE
701301-04	LANE CLOSURE, 2L, 2W, SHORT TIME OPERATIONS
701306-04	LANE CLOSURE, 2L, 2W, SLOW MOVING OPERATIONS, DAY ONLY, 45MPH OR MORE
701311-03	LANE CLOSURE, 2L, 2W, MOVING OPERATIONS, DAY ONLY
701701-10	URBAN LANE CLOSURE MULTILANE INTERSECTION
701801-06	SIDEWALK, CORNER OR CROSSWALK CLOSURE
701901-10	TRAFFIC CONTROL DEVICES
781001-04	TYPICAL APPLICATIONS RAISED REFLECTIVE PAVEMENT MARKERS

GENERAL NOTES

1. ALL REFERENCES TO STANDARD SPECIFICATIONS IN THESE GENERAL NOTES SHALL BE INTERPRETED TO MEAN THE "STANDARD SPECIFICATIONS FOR ROAD AND BRIDGE CONSTRUCTION" ADOPTED BY THE ILLINOIS DEPARTMENT OF TRANSPORTATION, JANUARY 1, 2022. ALL WORK TO BE COMPLETED IN ACCORDANCE WITH THE STANDARD SPECIFICATIONS, AND THE SUPPLEMENTAL SPECIFICATIONS AND RECURRING SPECIAL PROVISIONS ADOPTED JANUARY 1, 2025.
2. IT IS THE CONTRACTOR'S RESPONSIBILITY TO ASCERTAIN EXISTING FIELD CONDITIONS PRIOR TO BIDDING ON THE PROJECT.
3. BEFORE STARTING ANY EXCAVATION, THE CONTRACTOR SHALL CALL "JULIE" (JOINT UTILITY LOCATION INFORMATION FOR EXCAVATION) AT (800) 892-0123 FOR FIELD LOCATIONS OF BURIED UTILITIES (48 HOURS NOTIFICATION IS REQUIRED).
4. THE CONTRACTOR WILL NOT BE ALLOWED TO SET UP A YARD OR FIELD OFFICE ON MUNICIPAL PROPERTY WITHOUT WRITTEN PERMISSION FROM THE ENGINEER.
5. THE CONTRACTOR SHALL BE RESPONSIBLE FOR SWEEPING AND CLEANING STREETS OF ANY DEBRIS AND MATERIAL THAT HAS ACCUMULATED AS A RESULT OF THE CONSTRUCTION ACTIVITY. A MECHANICAL SWEEPER, MECHANICALLY DRIVEN AIR AND HANDWORK WITH SHOVEL AND BROOM SHALL BE UTILIZED TO PROVIDE A CLEAN STREET FOR THE MOTORING PUBLIC. WITHIN 24 HOURS OF PLACING PRIME COAT AND THE LAYING OF HMA, THE CONTRACTOR SHALL SWEEP THE PAVEMENT AND REMOVE STANDING WATER, EARTH, WEEDS, LEAVES, DIRT, CONSTRUCTION DEBRIS, AND ALL LOOSE MATERIAL.
6. THE CONTRACTOR SHALL PROVIDE POSITIVE DRAINAGE AND TEMPORARY DRAINAGE OUTLETS WITHIN THE WORK ZONE AT ALL TIMES. SHOULD ANY EXCAVATED AREA BECOME INUDATED WITH WATER DURING CONSTRUCTION, THE CONTRACTOR WILL BE REQUIRED TO REMOVE AND REPLACE AND LAYERS OF THE WORK ZONE IMPACTED. IMPACTED AREAS REQUIRING REMEDIATION WILL BE DETERMINED AT THE SOLE DISCRETION OF THE ENGINEER.
7. ABANDONED UNDERGROUND UTILITIES THAT CONFLICT WITH CONSTRUCTION SHALL BE DISPOSED OF OUTSIDE VILLAGE PROPERTY ACCORDING TO ARTICLE 202.03 OF THE STANDARD SPECIFICATIONS AND AS DIRECTED BY THE ENGINEER.
8. PER VILLAGE ORDINANCE 15.08, NO CONSTRUCTION WORK REQUIRING THE USE OF POWER TOOLS OR POWER MACHINERY OF ANY KIND SHALL BE UNDERTAKEN BEFORE 7:00 A.M. OR AFTER 8:00 P.M., MONDAY THROUGH FRIDAY, AND BEFORE 8:00 A.M. OR AFTER 8:00 P.M., SATURDAY AND SUNDAY.
9. PHOSPHORUS FERTILIZER HAS BEEN INTENTIONALLY OMITTED FROM THE CONTRACT DUE TO PROXIMITY OF EXISTING WETLANDS/BODIES OF WATER. A PHOSPHORUS-FREE FERTILIZER SHALL BE USED (MIDDLE NUMBER SHOULD EQUAL 0).
10. THE CONTRACTOR SHALL DELIVER 80 TONS OF MILLINGS TO THE VILLAGE PUBLIC WORKS FACILITY AT 4200 THOMPSON ROAD. PUBLIC WORKS CREWS WILL SPREAD AND STOCKPILE THE DUMPED MATERIALS.
11. CONTRACTOR SHALL TAKE PRECAUTION BY PRESERVING EXISTING TREES WITHIN THE RIGHT OF WAY. IF ANY DAMAGE OCCURS, TREES SHALL BE REPLACED IN KIND PER ARTICLE 201.07 REPAIR OR REPLACEMENT OF EXISTING PLANT MATERIAL REQUIREMENTS STATED HEREIN.

UTILITIES

1. THE CONTRACTOR SHALL BE RESPONSIBLE FOR CONTACTING THE OWNERS OF ALL UTILITIES PRIOR TO CONSTRUCTION TO DETERMINE THE LOCATION OF ALL UTILITY EQUIPMENT. THE CONTRACTOR SHALL COOPERATE WITH ALL UTILITY OWNERS IN ACCORDANCE WITH THE STANDARD SPECIFICATIONS IF UTILITY RELOCATION, ADJUSTMENT, OR PROTECTION IS NECESSARY.
2. THE CONTRACTOR SHALL BE RESPONSIBLE FOR THE PROTECTION OF ALL UNDERGROUND AND SURFACE UTILITIES EVEN THOUGH THEY MIGHT NOT BE SHOWN ON THE PLANS. ANY UTILITY PROPERTY DAMAGED DURING CONSTRUCTION SHALL BE REPAIRED OR REPLACED TO THE SATISFACTION OF THE OWNER.

3. THE CONTRACTOR SHALL USE ALL NECESSARY PRECAUTIONS AND PROTECTION MEASURES REQUIRED TO MAINTAIN EXISTING UTILITIES, SEWERS, AND APPURTENANCES THAT MUST BE KEPT IN OPERATION.
4. ANY LOOSE MATERIAL DEPOSITED IN THE FLOWLINE OF CULVERTS OR DITCHES, WHICH OBSTRUCTS THE NATURAL FLOW OF WATER SHALL BE REMOVED AT THE CLOSE OF EACH WORKING DAY. PRIOR TO ACCEPTANCE OF THE IMPROVEMENT, ALL DRAINAGE APPURTENANCES SHALL BE FREE OF DIRT AND DEBRIS.
5. THE INDISCRIMINATE USE OF FIRE HYDRANTS OR EXISTING STREAMS, CREEKS, WETLANDS OR PONDS IS STRICTLY PROHIBITED. THE CONTRACTOR SHALL PROVIDE A WATER TRUCK AND DRIVER AS REQUIRED TO OBTAIN AND TRANSPORT THIS WATER. THE CONTRACTOR SHALL BE RESPONSIBLE FOR OBTAINING THIS WATER FROM AN APPROVED SOURCE. IF THIS WATER IS FROM A SOURCE OTHER THAN HIS YARD, WRITTEN APPROVAL FROM THE AGENCY HAVING JURISDICTION FOR THE SOURCE OF THE WATER MUST BE RECEIVED BY THE ENGIEER PRIOR TO USE OF THE WATER.

PAVING

1. LONGITUNDINAL CONSTRUCTION JOINTS WILL NOT BE PERMITTED.
2. TRANSVERSE CONSTRUCTION JOINTS WILL BE ALLOWED DURING PAVING PROVIDED THE CONTRACTOR COMPLETE A SAWCUT AT LEAST SIX INCHES INTO THE ADJACENT MAT AT THE START OF PAVING THE FOLLOWING DAY.
3. CONSTRUCTION JOINTS THAT SIT OVERNIGHT WILL REQUIRE CRACK ROUTING AND SEALING UPON COMPLETION OF SURFACE COURSE CONSTRUCTION. JOINT SEALANT SHALL MEET THE REQUIREMENTS OF ARTICLE 1050.02 OF THE STANDARD SPECIFICATIONS.

SIGNING AND STRIPING

1. SIGNS SHALL NOT BE MOVED OR COVERED UNTIL PROGRESS OF WORK NECESSITATES IT.
2. THE CONTRACTOR WILL BE REQUIRED TO TEMPORARILY RESET ALL SUCH SIGNS THAT INTERFERE WITH HIS CONSTRUCTION OPERATIONS. ALL SUCH SIGNS MUST BE MAINTAINED STRAIGHT AND CLEAN FOR THE DURATION OF THE TEMPORARY SETTING AND MUST BE RE-ERECTED AT A TEMPORARY LOCATION IN A WORKMANLIKE MANNER AND BE VISIBLE TO THE TRAFFIC FOR WHICH IT IS INTENDED.
3. SEE IDOT DISTRICT ONE DETAILS AND PLAN SHEETS FOR PAVEMENT MARKING DETAILS.
4. GRINDING OF PAVEMENT MARKINGS ON NEWLY CONSTRUCTED HOT-MIX ASPHALT PAVEMENT WILL NOT BE PERMITTED.
5. THE CONTRACTOR SHALL BE RESPONSIBLE FOR POSTING 'FRESH OIL' SIGNS (48"x48" MINIMUM) AS NEEDED FOR THE PROJECT. THE CONTRACTOR SHALL INSTALL AND MAINTAIN TEMPORARY SIGNS IN THE PARKWAY TWENTY-FOUR (24) HOURS PRIOR TO STARTING WORK. THE CONTRACTOR SHALL REMOVE THE SIGNS AND REINSTALL THEM AS NEEDED.
6. IN ACCORDANCE WITH THE IDOT DROP OFF POLICY AT INSTANCES IN WHICH THERE IS A GREATER THAN 1.5 INCH HEIGHT DIFFERENCE IN VERTICAL MILLED FACE, OR WHEN THERE IS A GREATER THAN 2.5 INCH LIFT DIFFERENCE, UNEVEN LANE SIGNS (W8-11) WILL BE REQUIRED.

CONSTRUCTION LAYOUT

NONE.

COMMITMENTS

NONE.

STATE OF ILLINOIS
DEPARTMENT OF TRANSPORTATION

INDEX OF SHEETS, STATE STANDARDS, DISTRICT 1 DETAILS
& GENERAL NOTES OF WEST WONDER LAKE ROAD

SCALE: SHEET 1 OF 2 SHEETS STA. TO STA.

F.A.U. RTE.	SECTION	COUNTY	TOTAL SHEETS	SHEET NO.
0079	24-00013-00-RS	MCHENRY	18	2
		CONTRACT NO.	61L00	
		ILLINOIS	FED. AID PROJECT	

MODEL: Index-1 [Sheet]
FILE NAME: \\hrgreen.com\hrg\Data\2022\202827\CAD\Sheets\2202827_01_sh-4-index.dgn

HRGreen.com
Illinois Professional Design Firm
184-001322

USER NAME = benjamin.belgrave	DESIGNED - JJS	REVISED - XX/XX/XXXX
	DRAWN - BJB	REVISED - XX/XX/XXXX
PLOT SCALE = 0.16666633' / In.	CHECKED -	REVISED - XX/XX/XXXX
PLOT DATE = 10/29/2024	DATE -	REVISED - XX/XX/XXXX

MODEL: soc-1 [Sheet]
FILE NAME: \\hrgreen.com\hrg\Draws\2022\202827\CAD\Sheets\202827_01_sht-quantities.dgn

CODE NO.	ITEM	UNIT	TOTAL QUANTITY	CONSTRUCTION CODE
				STU 80% FEDERAL 20% STATE 0005
20101100	TREE TRUNK PROTECTION	EACH	1	1
21101615	TOPSOIL FURNISH AND PLACE, 4"	SQ YD	84	84
25000210	SEEDING, CLASS 2A	ACRE	0.25	0.25
25100630	EROSION CONTROL BLANKET	SQ YD	148	148
28000400	PERIMETER EROSION BARRIER	FOOT	125	125
35101600	AGGREGATE BASE COURSE, TYPE B 4"	SQ YD	301	301
40600290	BITUMINOUS MATERIALS (TACK COAT)	POUND	14,396	14,396
40600370	LONGITUDINAL JOINT SEALANT	FOOT	10,826	10,826
40600400	MIXTURE FOR CRACKS, JOINTS, AND FLANGEWAYS	TON	15	15
40600982	HOT-MIX ASPHALT SURFACE REMOVAL - BUTT JOINT	SQ YD	131	131
40603200	POLYMERIZED HOT-MIX ASPHALT BINDER COURSE, IL-4.75, N50	TON	1,195	1,195
40604060	HOT-MIX ASPHALT SURFACE COURSE, IL-9.5, MIX "D", N50	TON	2,137	2,137
40800050	INCIDENTAL HOT-MIX ASPHALT SURFACING	TON	4	4
42400200	PORTLAND CEMENT CONCRETE SIDEWALK 5 INCH	SQ FT	2,707	2,707
42400800	DETECTABLE WARNINGS	SQ FT	387	387
44000159	HOT-MIX ASPHALT SURFACE REMOVAL, 2 1/2"	SQ YD	21,327	21,327
44000200	DRIVEWAY PAVEMENT REMOVAL	SQ YD	215	215
44000600	SIDEWALK REMOVAL	SQ FT	2,707	2,707

* SPECIALTY ITEM



HRGreen.com
Illinois Professional Design Firm
184-001322

USER NAME = benjamin.belgreve	DESIGNED - JJS	REVISED - XX/XX/XXXX
	DRAWN - BJB	REVISED - XX/XX/XXXX
PLOT SCALE = 0.16666633' / in.	CHECKED -	REVISED - XX/XX/XXXX
PLOT DATE = 10/29/2024	DATE -	REVISED - XX/XX/XXXX

STATE OF ILLINOIS
DEPARTMENT OF TRANSPORTATION

SUMMARY OF QUANTITIES
WEST WONDER LAKE ROAD

SCALE: SHEET 1 OF 3 SHEETS STA. TO STA.

FAU. RTE.	SECTION	COUNTY	TOTAL SHEETS	SHEET NO.
0079	24-00013-00-RS	MCHENRY	18	3
		CONTRACT NO. 61L00		
		ILLINOIS FED. AID PROJECT		

MODEL: sop-2 [Sheet]
FILE NAME: \\hrgreen.com\hrg\Data\2022\202827\CAD\Sheets\202827_01_sh-quantities.dgn

CODE NO.	ITEM	UNIT	TOTAL QUANTITY	CONSTRUCTION CODE
				STU 80% FEDERAL 20% STATE 0005
44201753	CLASS D PATCHES, TYPE II, 9 INCH	SQ YD	145	145
44201757	CLASS D PATCHES, TYPE III, 9 INCH	SQ YD	145	145
44201759	CLASS D PATCHES, TYPE IV, 9 INCH	SQ YD	145	145
48101200	AGGREGATE SHOULDERS, TYPE B	TON	47	47
60300105	FRAMES AND GRATES TO BE ADJUSTED	EACH	1	1
60404800	FRAMES AND GRATES, TYPE 11	EACH	1	1
67100100	MOBILIZATION	L SUM	1	1
70100450	TRAFFIC CONTROL AND PROTECTION, STANDARD 701201	L SUM	1	1
70100460	TRAFFIC CONTROL AND PROTECTION, STANDARD 701306	L SUM	1	1
70102635	TRAFFIC CONTROL AND PROTECTION, STANDARD 701701	L SUM	1	1
70102640	TRAFFIC CONTROL AND PROTECTION, STANDARD 701801	L SUM	1	1
70300100	SHORT TERM PAVEMENT MARKING	FOOT	1,447	1,447
70300150	SHORT TERM PAVEMENT MARKING REMOVAL	SQ FT	483	483
* 78000100	THERMOPLASTIC PAVEMENT MARKING - LETTERS AND SYMBOLS	SQ FT	513	513
* 78000200	THERMOPLASTIC PAVEMENT MARKING - LINE 4"	FOOT	12,914	12,914
* 78000400	THERMOPLASTIC PAVEMENT MARKING - LINE 6"	FOOT	2,886	2,886
* 78000600	THERMOPLASTIC PAVEMENT MARKING - LINE 12"	FOOT	781	781
* 78000650	THERMOPLASTIC PAVEMENT MARKING - LINE 24"	FOOT	51	51

* SPECIALTY ITEM



HRGreen.com
Illinois Professional Design Firm
184-001322

USER NAME	= benjamin.belgrave
DRAWN	= BJB
PLOT SCALE	= 0.16666633''/In.
PLOT DATE	= 10/29/2024

DESIGNED	= JJS
CHECKED	=
DATE	=

REVISED	= XX/XX/XXXX
REVISED	= XX/XX/XXXX
REVISED	= XX/XX/XXXX
REVISED	= XX/XX/XXXX

STATE OF ILLINOIS
DEPARTMENT OF TRANSPORTATION

SUMMARY OF QUANTITIES
WEST WONDER LAKE ROAD

SCALE: SHEET 2 OF 3 SHEETS TO STA.

F.A.U. RTE.	SECTION	COUNTY	TOTAL SHEETS	SHEET NO.
0079	24-00013-00-RS	MCHENRY	18	4
		CONTRACT NO. 61L00		
		ILLINOIS	FED. AID PROJECT	

MODEL: sop-3 (Sheet)
FILE NAME: \\hrgreen.com\hrg\Data\2022\202827\CAD\Sheets\202827_01_sht-quantities.dgn

				CONSTRUCTION CODE
CODE NO.	ITEM	UNIT	TOTAL QUANTITY	STU 80% FEDERAL 20% STATE 0005
* 78011000	GROOVING FOR RECESSED PAVEMENT MARKING, LETTERS AND SYMBOLS	SQ FT	513	513
* 78011025	GROOVING FOR RECESSED PAVEMENT MARKING 5"	FOOT	12,914	12,914
* 78011035	GROOVING FOR RECESSED PAVEMENT MARKING 7"	FOOT	2,886	2,886
* 78011065	GROOVING FOR RECESSED PAVEMENT MARKING 13"	FOOT	781	781
* 78011125	GROOVING FOR RECESSED PAVEMENT MARKING 25"	FOOT	51	51
78300200	RAISED REFLECTIVE PAVEMENT MARKER REMOVAL	EACH	44	44
* K1004595	PRUNING FOR SAFETY AND EQUIPMENT CLEARANCE	L SUM	1	1
X2111100	TOPSOIL EXCAVATION AND PLACEMENT (SPECIAL)	CU YD	10	10
X4400196	HOT-MIX ASPHALT SURFACE REMOVAL (SPECIAL)	SQ YD	15	15
X4400501	COMBINATION CURB AND GUTTER REMOVAL AND REPLACEMENT LESS THAN OR EQUAL TO 10 FEET	FOOT	200	200
X4400503	COMBINATION CURB AND GUTTER REMOVAL AND REPLACEMENT GREATER THAN 10 FEET	FOOT	300	300
* X7810300	RECESSED REFLECTIVE PAVEMENT MARKER	EACH	44	44
Z0004510	HOT-MIX ASPHALT DRIVEWAY PAVEMENT, 3"	SQ YD	215	215
Z0030850	TEMPORARY INFORMATION SIGNING	SQ FT	78	78

* SPECIALTY ITEM



HRGreen.com
Illinois Professional Design Firm
184-001322

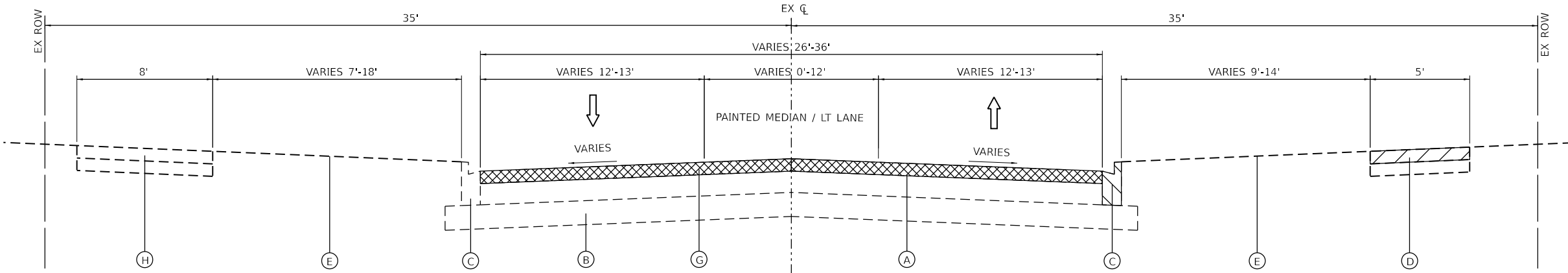
USER NAME = benjamin.belgrave	DESIGNED - JJS	REVISED - XX/XX/XXXX
	DRAWN - BJB	REVISED - XX/XX/XXXX
PLOT SCALE = 0.16666633' / in.	CHECKED -	REVISED - XX/XX/XXXX
PLOT DATE = 10/29/2024	DATE -	REVISED - XX/XX/XXXX

STATE OF ILLINOIS
DEPARTMENT OF TRANSPORTATION

SUMMARY OF QUANTITIES
WEST WONDER LAKE ROAD

SCALE: SHEET 3 OF 3 SHEETS STA. TO STA.

FAU. RTE.	SECTION	COUNTY	TOTAL SHEETS	SHEET NO.
0079	24-00013-00-RS	MCHENRY	18	5
CONTRACT NO.			61L00	
ILLINOIS		FED. AID PROJECT		



EXISTING TYPICAL SECTION

W WONDER LAKE RD (THOMPSON RD TO 650' SOUTH OF WHITE OAKS RD)

EXISTING TYPICAL SECTION

A

EXISTING HOT-MIX ASPHALT PAVEMENT; SEE TABLE

B

EXISTING AGGREGATE BASE COURSE; SEE TABLE

C

EXISTING COMBINATION CONCRETE CURB & GUTTER, TYPE B6.12

D

EXISTING PCC SIDEWALK

E

EXISTING GROUND

F

EXISTING AGGREGATE/EARTH SHOULDER

G

HOT-MIX ASPHALT SURFACE REMOVAL, 2½"

H

EXISTING HOT-MIX ASPHALT MULTI-USE PATH

HOT-MIX ASPHALT SURFACE REMOVAL

PCC SIDEWALK REMOVAL & REPLACEMENT (SPOT REMOVAL & REPLACEMENT AS DIRECTED BY THE ENGINEER)

COMBINATION CURB AND GUTTER REMOVAL AND REPLACEMENT LESS THAN OR EQUAL TO 10 FEET
COMBINATION CURB AND GUTTER REMOVAL AND REPLACEMENT GREATER THAN 10 FEET

NOTES:

IT IS THE CONTRACTOR'S RESPONSIBILITY TO DETERMINE THE CURB AND GUTTER TYPE.

PATCHING LOCATIONS TO BE MARKED BY THE ENGINEER AFTER MILLING OPERATIONS.

PROPOSED TYPICAL SECTION

W WONDER LAKE RD (THOMPSON RD TO 650' SOUTH OF WHITE OAKS RD)

PROPOSED TYPICAL SECTION

1

HOT-MIX ASPHALT SURFACE COURSE, MIX 'D', IL-9.5, N50; 1¾"

2

POLYMERIZED HOT-MIX ASPHALT BINDER COURSE, IL-4.75, N50; 1"

3

AGGREGATE SHOULDERS, TYPE B (9% MAX SLOPE) (CA-6 CRUSHED GRAVEL OR CRUSHED STONE)

4

PAVEMENT MARKING, LINE 4" (SEE RESURFACING PLAN)

EXISTING PAVEMENT THICKNESS TABLE	
LOCATION	THICKNESS
WEST WONDER LAKE ROAD	
HMA	±11"
GRANULAR BASE	±6"-12"

HOT-MIX ASPHALT MIXTURE REQUIREMENTS		
MIXTURE TYPE	AIR VOIDS @ Ndes	QMP
INCIDENTAL HMA SURFACING (DRIVEWAYS)		
HMA SURFACE COURSE, MIX "D", N50; (IL-9.5mm); 2"	4.0% @ 50 GYR.	LR 1030-2
HMA DRIVEWAY PAVEMENT 3"		
HMA SURFACE COURSE, MIX "D", N50; (IL-9.5mm); 3"	4.0% @ 50 GYR.	LR 1030-2
RESURFACING		
HMA SURFACE COURSE, MIX "D", IL-9.5, N50; 1 ¾"	4.0% @ 50 GYR.	LR 1030-2
POLYMERIZED HMA BINDER COURSE, IL-4.75, N50; 1"	3.5% @ 50 GYR.	LR 1030-2
PATCHING		
CLASS D PATCHES, 9" (HMA BINDER IL-19.0mm)	4.0% @ 70 GYR.	LR 1030-2
QMP DESIGNATION: QUALITY CONTROL/QUALITY ASSURANCE (QC/QA) PER LR 1030-2		

THE UNIT WEIGHT TO CALCULATE ALL HMA SURFACE MIXTURE QUANTITIES IS 112 LBS/SQ YD/IN

THE "AC TYPE" FOR POLYMERIZED HMA MIXES SHALL BE "SBS/SBR PG 76-22" AND FOR NON-POLYMERIZED HMA THE "AC TYPE" SHALL BE "PG 64-22" UNLESS MODIFIED BY RECLAIMED MATERIAL SPECIFICATIONS.

PATCHING LOCATIONS TO BE DETERMINED BY THE ENGINEER AFTER MILLING OPERATIONS.

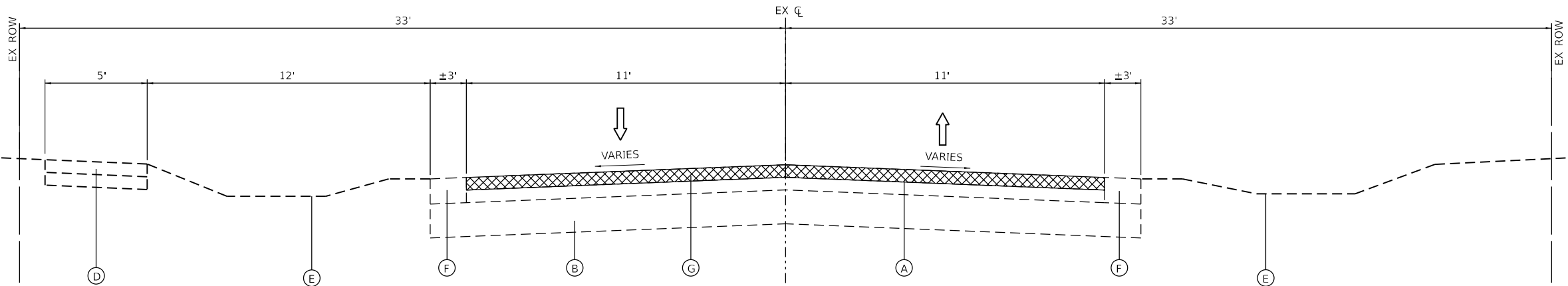
LONGITUDINAL JOINT SEALANT SHALL BE PLACED OVER THE POLY HMA BC IL-4.75 N50.

EXISTING & PROPOSED TYPICAL SECTIONS WEST WONDER LAKE ROAD		F.A.U. RTE.	SECTION	COUNTY	TOTAL SHEETS	SHEET NO.
		0079	24-00013-00-RS	MCHENRY	18	6
SCALE: N.T.S.		SHEET 1 OF 2 SHEETS		TO STA.		
				ILLINOIS FED. AID PROJECT		

MODEL: typ-1 [Sheet]
FILE NAME: \\hrgreen.com\hrg\Draws\2022\202827\CAD\Sheets\202827_01_sht-typ.dgn

<div><div><div></div><div>HRGreen</div></div><div><div>HRGreen.com</div><div>Illinois Professional Design Firm</div><div># 184-001322</div></div></div>	USER NAME = benjamin.belgrave	DESIGNED - JJS	REVISED - XX/XX/XXXX
		DRAWN - BJB	REVISED - XX/XX/XXXX
	PLOT SCALE = 0.16666633' / In.	CHECKED -	REVISED - XX/XX/XXXX
	PLOT DATE = 10/29/2024	DATE -	REVISED - XX/XX/XXXX

STATE OF ILLINOIS
DEPARTMENT OF TRANSPORTATION



EXISTING TYPICAL SECTION

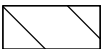
W WONDER LAKE RD (650' SOUTH OF WHITE OAKS RD TO WHITE OAKS RD)

EXISTING TYPICAL SECTION

- A EXISTING HOT-MIX ASPHALT PAVEMENT; SEE TABLE
- B EXISTING AGGREGATE BASE COURSE; SEE TABLE
- C EXISTING COMBINATION CONCRETE CURB & GUTTER, TYPE B6.12
- D EXISTING PCC SIDEWALK
- E EXISTING GROUND
- F EXISTING AGGREGATE/EARTH SHOULDER
- G HOT-MIX ASPHALT SURFACE REMOVAL, 2½"
- H EXISTING HOT-MIX ASPHALT MULTI-USE PATH

 HOT-MIX ASPHALT SURFACE REMOVAL

 PCC SIDEWALK REMOVAL & REPLACEMENT (SPOT REMOVAL & REPLACEMENT AS DIRECTED BY THE ENGINEER)

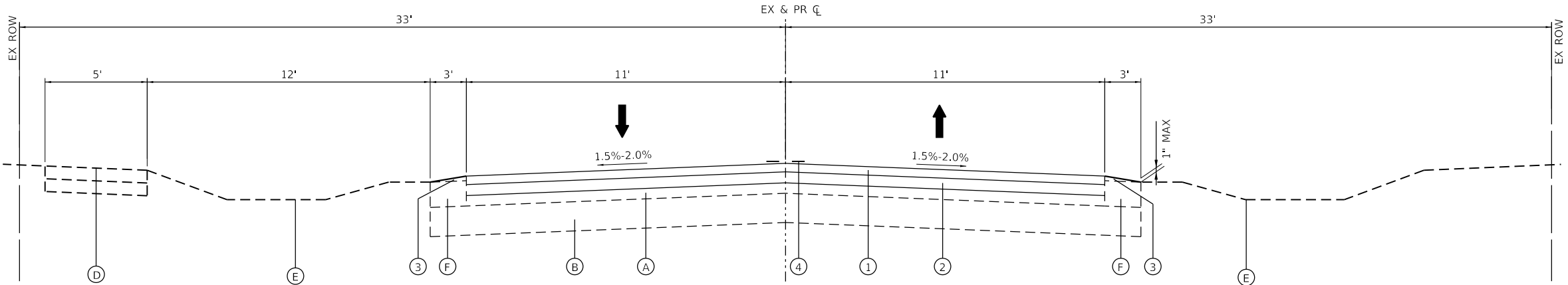
 COMBINATION CURB AND GUTTER REMOVAL AND REPLACEMENT LESS THAN OR EQUAL TO 10 FEET
COMBINATION CURB AND GUTTER REMOVAL AND REPLACEMENT GREATER THAN 10 FEET

NOTES:
IT IS THE CONTRACTOR'S RESPONSIBILITY TO DETERMINE THE CURB AND GUTTER TYPE.

PATCHING LOCATIONS TO BE MARKED BY THE ENGINEER AFTER MILLING OPERATIONS.

PROPOSED TYPICAL SECTION

- 1 HOT-MIX ASPHALT SURFACE COURSE, MIX 'D', IL-9.5, N50; 1¾"
- 2 POLYMERIZED HOT-MIX ASPHALT BINDER COURSE, IL-4.75, N50; 1"
- 3 AGGREGATE SHOULDERS, TYPE B (9% MAX SLOPE) (CA-6 CRUSHED GRAVEL OR CRUSHED STONE)
- 4 PAVEMENT MARKING, LINE 4" (SEE RESURFACING PLAN)



PROPOSED TYPICAL SECTION

W WONDER LAKE RD (650' SOUTH OF WHITE OAKS RD TO WHITE OAKS RD)

EXISTING PAVEMENT THICKNESS TABLE

LOCATION	THICKNESS
WEST WONDER LAKE ROAD	
HMA	±6"
GRANULAR BASE	±6"

MODEL: typ-2 [Sheet]
FILE NAME: \\hrgreen.com\hrg\Draws\2022\202827\CAD\Sheets\202827_01_sh-tyr.dgn



HRGreen.com
Illinois Professional Design Firm
#184-001322

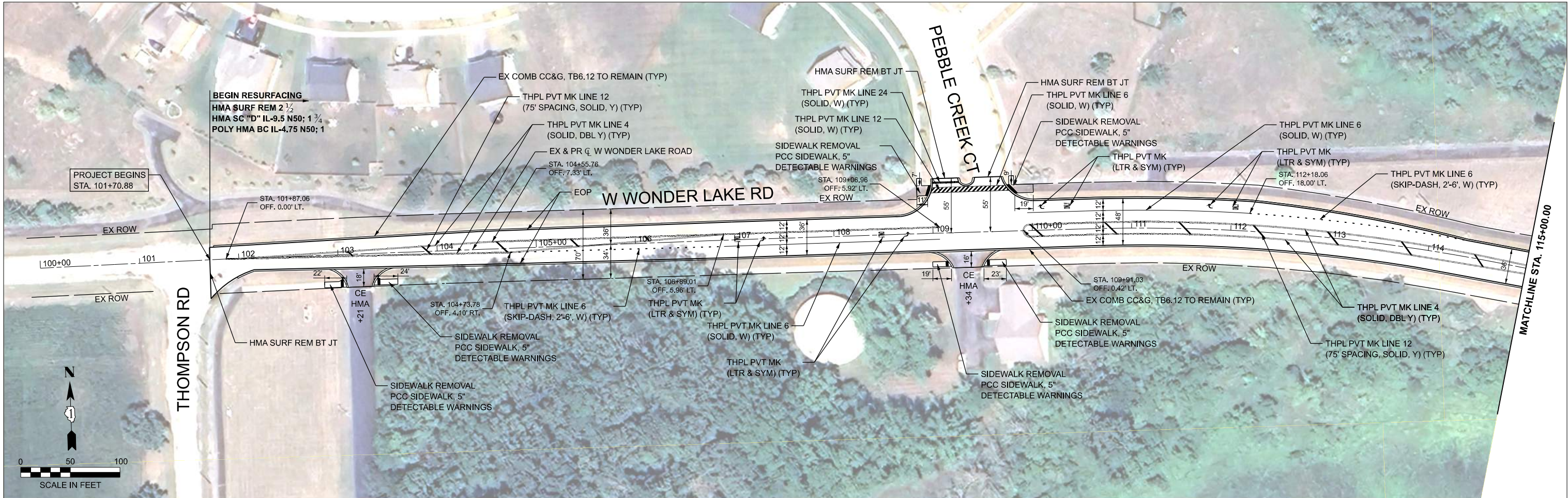
USER NAME	= benjamin.belgrave	DESIGNED	- JJS	REVISED	- XX/XX/XXXX
DRAWN	- BJB	REVISED	- XX/XX/XXXX		
PLOT SCALE	= 0.16666633''/In.	CHECKED	-	REVISED	- XX/XX/XXXX
PLOT DATE	= 10/29/2024	DATE	-	REVISED	- XX/XX/XXXX

STATE OF ILLINOIS
DEPARTMENT OF TRANSPORTATION

EXISTING & PROPOSED TYPICAL SECTIONS
WEST WONDER LAKE ROAD

SCALE: N.T.S. SHEET 2 OF 2 SHEETS STA. TO STA.

F.A.U. RTE.	SECTION	COUNTY	TOTAL SHEETS	SHEET NO.
0079	24-00013-00-RS	MCHENRY	18	7
CONTRACT NO.				61L00
ILLINOIS		FED. AID PROJECT		



MODEL: EXCL - plan-1 [Sheet]
FILE NAME: \\hrgreen.com\\hrg\\Data\\2022\\202827\\CAD\\Sheets\\202827_01_sh-plan.dgn

HRGreen.com

Illinois Professional Design Firm

184-001322

HRGreen®

USER NAME = benjamin.belgrave

DESIGNED - JJS

REVISED - XX/XX/XXXX

DRAWN - BJB

REVISED - XX/XX/XXXX

PLOT SCALE = 0.16666633" / in.

CHECKED -

REVISED - XX/XX/XXXX

PLOT DATE = 10/29/2024

DATE -

REVISED - XX/XX/XXXX

STATE OF ILLINOIS

DEPARTMENT OF TRANSPORTATION

RESURFACING PLAN

WEST WONDER LAKE ROAD

SCALE: 1"=50'

SHEET 1 OF 2 SHEETS

STA. 100+00.00 TO STA. 130+00.00

RTE.

SECTION

COUNTY

SHEETS

NO.

0079

24-00013-00-RS

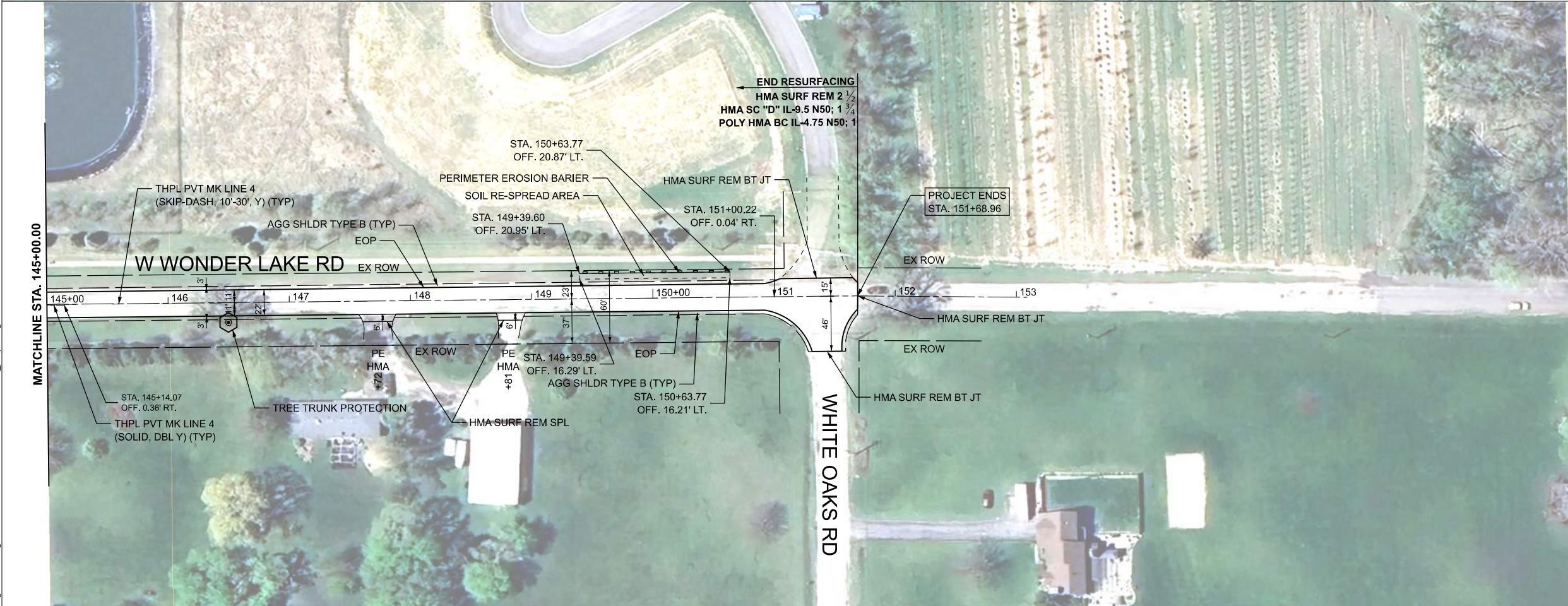
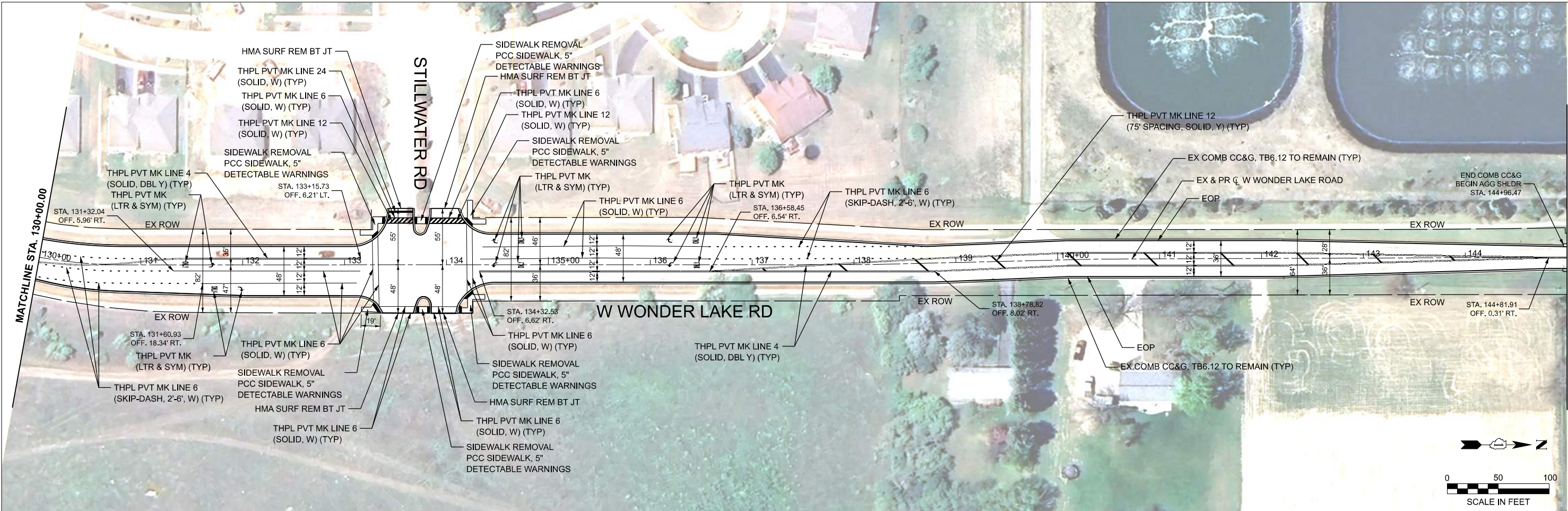
MCHENRY

18

8

CONTRACT NO.

61L00



MODEL: EXCL - Plan-3 (Sheet)
FILE NAME: \\hrgreen.com\\hrg\\Data\\2022\\202827\\CAD\\Sheets\\202827_01_sh-plan.dgn



HRGreen.com
Illinois Professional Design Firm
184-001322

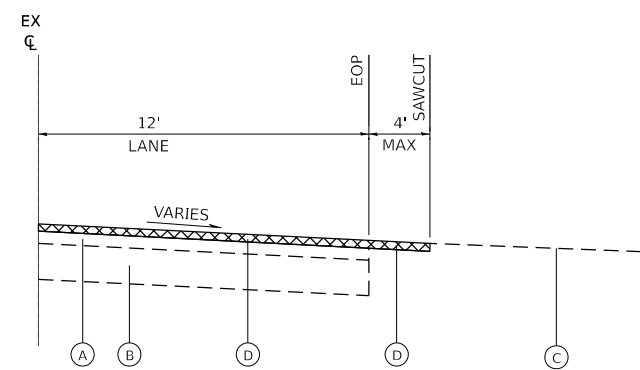
USER NAME	= benjamin.bellgrave	DESIGNED	- JJS	REVISED	- XX/XX/XXXX
DRAWN	- BJB	REVIS	- XX/XX/XXXX		
PLOT SCALE	= 0.16666633' / In.	CHECKED	-	REVISED	- XX/XX/XXXX
PLOT DATE	= 10/29/2024	DATE	-	REVISED	- XX/XX/XXXX

STATE OF ILLINOIS
DEPARTMENT OF TRANSPORTATION

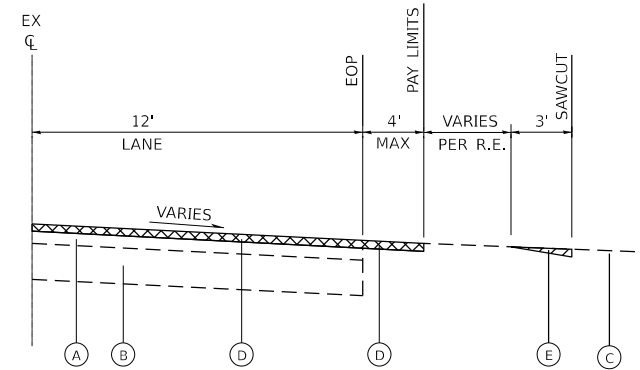
RESURFACING PLAN
WEST WONDER LAKE ROAD

SCALE: 1"=50' SHEET 2 OF 2 SHEETS STA. 130+00.00 TO STA. 160+00.00

F.A.U. RTE.	SECTION	COUNTY	TOTAL SHEETS	SHEET NO.
0079	24-00013-00-RS	MCHENRY	18	9
		CONTRACT NO. 61L00		
ILLINOIS		FED. AID PROJECT		



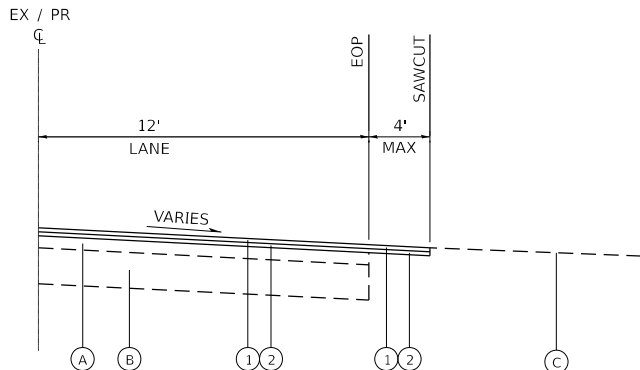
EXISTING / REMOVAL DETAIL



EXISTING / REMOVAL DETAIL

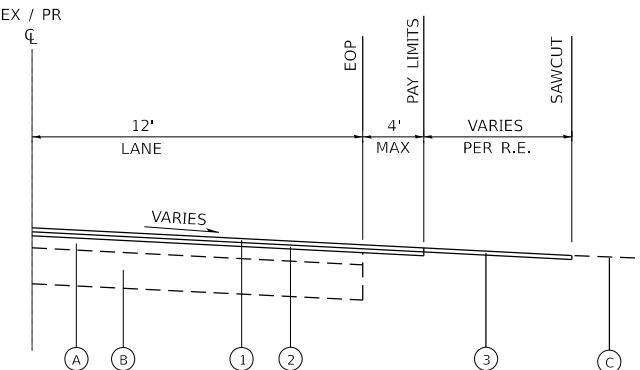
EXISTING LEGEND

- (A) EXISTING HOT-MIX ASPHALT PAVEMENT; 6"
- (B) EXISTING AGGREGATE BASE COURSE; 12"
- (C) EXISTING DRIVEWAY PAVEMENT
- (D) HOT-MIX ASPHALT SURFACE REMOVAL, 2½" (SEE RESURFACING PLANS)
- (E) HOT-MIX ASPHALT SURFACE REMOVAL, SPECIAL (PER SQ YD)



PROPOSED / RESURFACING DETAIL

CASE I



PROPOSED / RESURFACING DETAIL

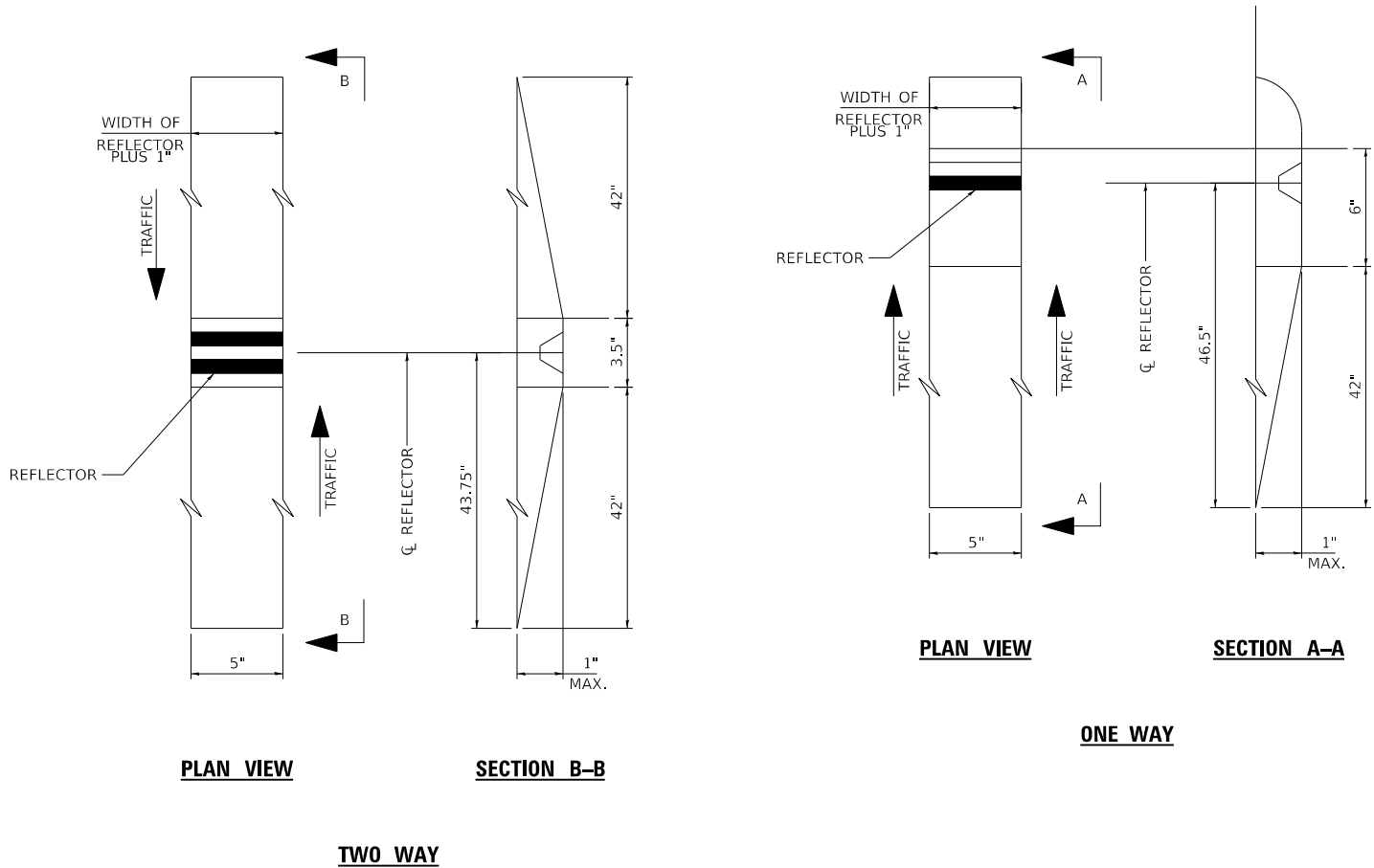
CASE II

PROPOSED LEGEND

- (1) PROPOSED RESURFACING; HMA SURFACE COURSE (SEE HMA MIX TABLE)
- (2) PROPOSED RESURFACING; HMA BINDER COURSE (SEE HMA MIX TABLE)
- (3) INCIDENTAL HOT-MIX ASPHALT SURFACING (PER TON)

DRIVEWAY RESURFACING DETAILS

MODEL: const_detail-1 [Sheet]
FILE NAME: \\hrgreen.com\hrg\Drawings\2022\20220227\CAD\Sheets\20220227_01_sh-construction_detail.dgn



RECESSED REFLECTIVE MARKERS

INSTALLATION NOTES:

- SAWCUT IN DIMENSIONS SHOWN.
- SAWCUT AREAS TO BE DRY AND FREE OR MATERIAL THAT ADVERSELY AFFECTS THE ADHESIVE BAND.
- INSTALL THE REFLECTOR WITH AN APPROVED TWO-COMPONENT EPOXY ADHESIVE. EPOXY SHOULD NOT OBSCURE OR BLOCK THE LENS.
- INSTALL TOP OF REFLECTOR 1/2 TO 1/4 INCH BELOW THE PAVEMENT SURFACE.

GENERAL NOTES:

- INSTALLATION SHALL CONFORM TO IDOT HIGHWAY STANDARD 781001-04 (OR LATEST) FOR MARKER PLACEMENT.
- IDOT STANDARD 781001-04 SHALL BE MODIFIED TO REFLECT IN RECESSED PAVEMENT MARKERS INSTEAD OF RAISED PAVEMENT MARKERS.

STATE OF ILLINOIS
DEPARTMENT OF TRANSPORTATION

CONSTRUCTION DETAIL
WEST WONDER LAKE ROAD

SCALE: N.T.S. SHEET 2 OF 3 SHEETS STA. TO STA.

F.A.U. RTE.	SECTION	COUNTY	TOTAL SHEETS	SHEET NO.
0079	24-00013-00-RS	MCHENRY	18	11
CONTRACT NO.			61L00	
ILLINOIS		FED. AID PROJECT		

MODEL: const_detail-2 (Sheet)
FILE NAME: \\hrgreen.com\hrg\Drawings\2022\202827\CAD\Sheets\202827_01_sh-construction_detail.dgn

USER NAME	= benjamin.belgrave	DESIGNED	- JJS	REVISED	- XX/XX/XXXX
		DRAWN	- BJB	REVISED	- XX/XX/XXXX
PLOT SCALE	= 0.16666633''/In.	CHECKED	-	REVISED	- XX/XX/XXXX
PLOT DATE	= 10/29/2024	DATE	-	REVISED	- XX/XX/XXXX

MODEL: const_detail-3 [Sheet]
FILE NAME: \\hrgreen.com\hrg\Data\2022\202827\CAD\Sheets\202827_01_sh-construction_detail.dgn



HRGreen.com
Illinois Professional Design Firm
184-001322

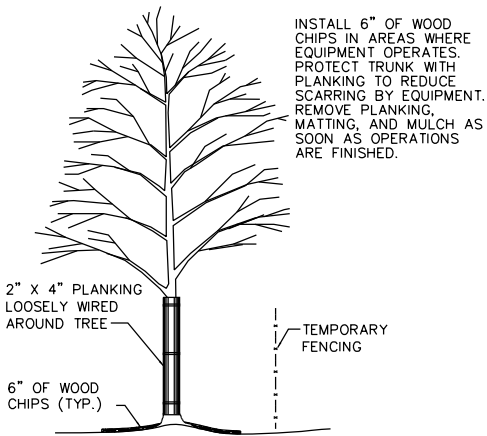
USER NAME	= benjamin.belgrave	DESIGNED -	JJS	REVISED -	XX/XX/XXXX
		DRAWN -	BJB	REVISED -	XX/XX/XXXX
PLOT SCALE	= 0.16666633 "/In.	CHECKED -		REVISED -	XX/XX/XXXX
PLOT DATE	= 10/29/2024	DATE -		REVISED -	XX/XX/XXXX

STATE OF ILLINOIS
DEPARTMENT OF TRANSPORTATION

CONSTRUCTION DETAIL
WEST WONDER LAKE ROAD

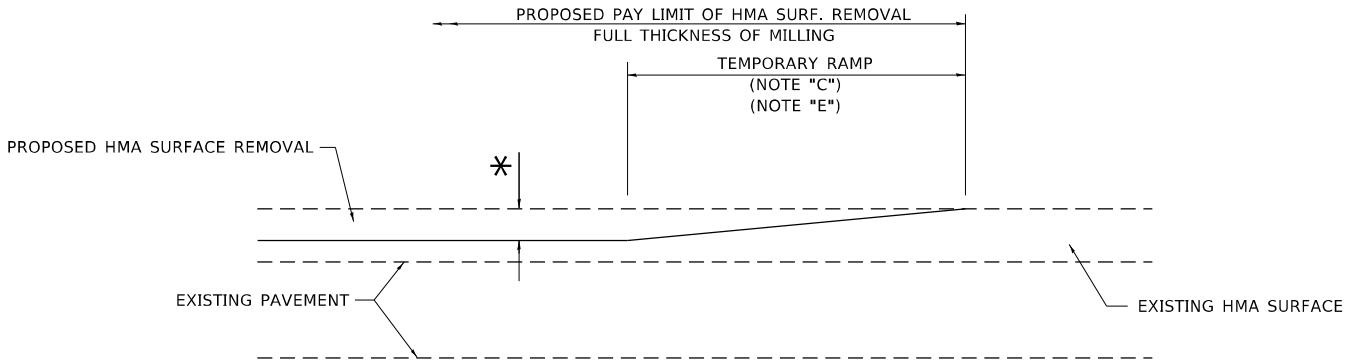
SCALE: N.T.S. SHEET 3 OF 3 SHEETS STA. TO STA.

F.A.U. RTE.	SECTION	COUNTY	TOTAL SHEETS	SHEET NO.
0079	24-00013-00-RS	MCHENRY	18	12
			CONTRACT NO. 61L00	
		ILLINOIS	FED. AID PROJECT	



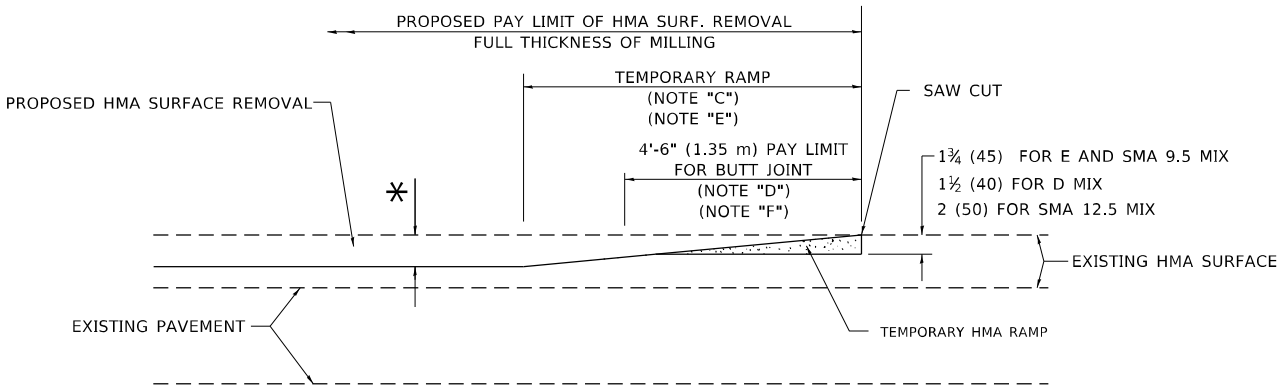
TYP. TREE TRUNK PROTECTION DETAIL

SCALE: NTS



MILLED TEMPORARY RAMP
(FOR BUTT JOINT AND HMA TAPER SEE DETAIL BELOW)

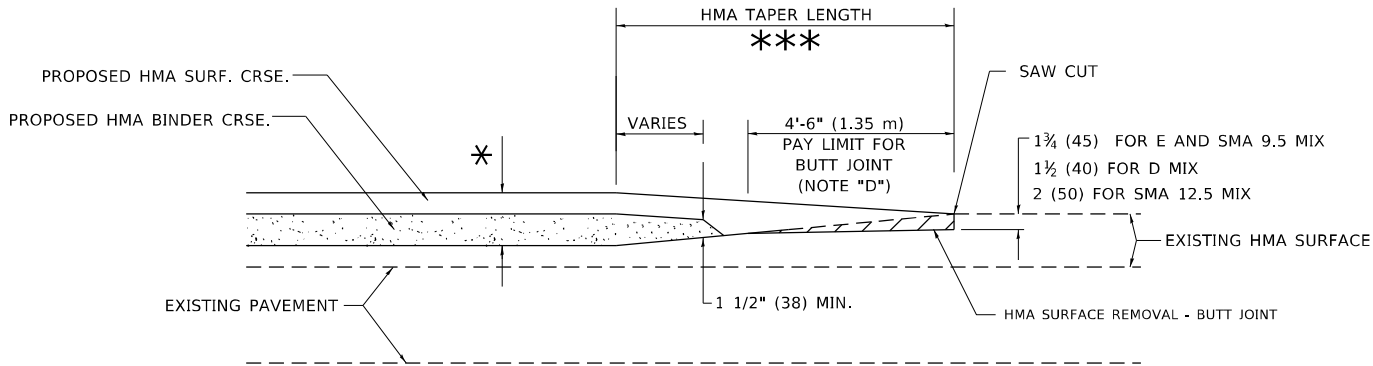
OPTION 1



HMA CONSTRUCTED TEMPORARY RAMP
(FOR BUTT JOINT AND HMA TAPER SEE DETAIL BELOW)

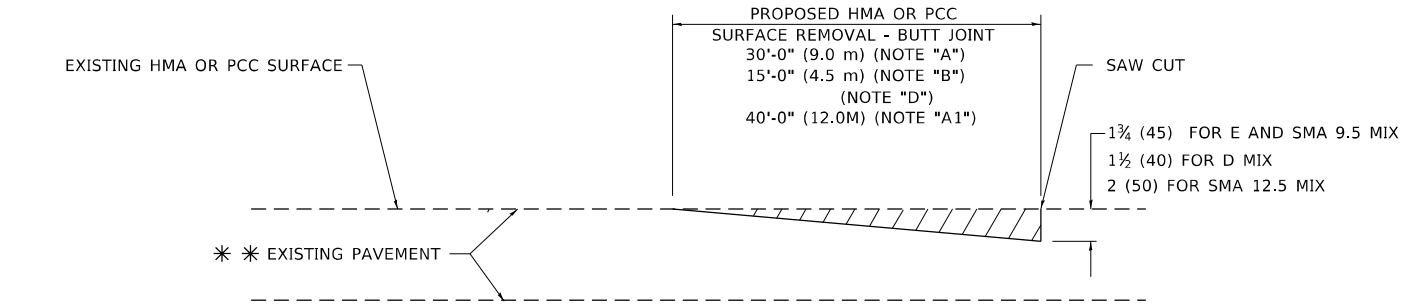
OPTION 2

TYPICAL TEMPORARY RAMP

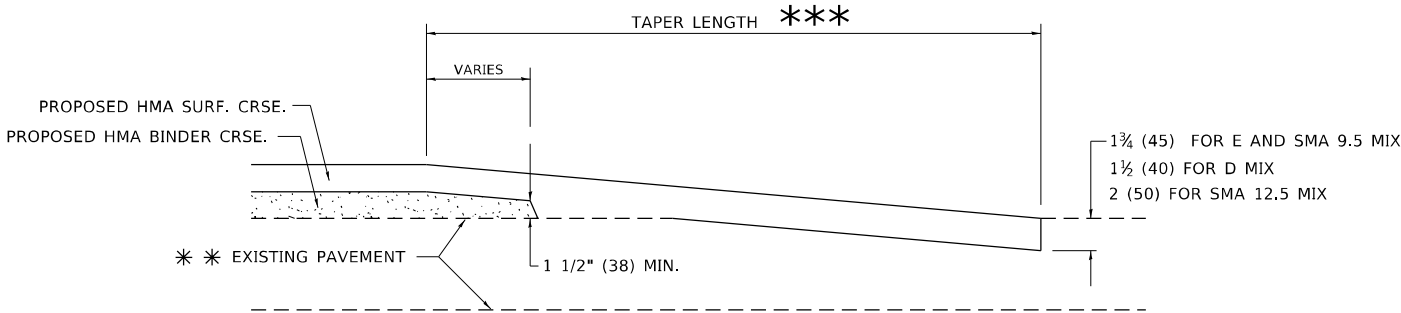


**BUTT JOINT AND
HMA TAPER**

**TYPICAL BUTT JOINT AND HMA TAPER
FOR MILLING AND RESURFACING**



BUTT JOINT DETAIL



HMA TAPER DETAIL

**TYPICAL BUTT JOINT AND HMA TAPER
FOR RESURFACING ONLY**

** PC CONCRETE, HMA OR HMA RESURFACED PAVEMENT.

GENERAL NOTES

- A. MAINLINE ARTERIAL ROADWAYS AND MAJOR SIDE ROADS.
- A1. INTERSTATES
- B. MINOR SIDE ROADS.
- C. THE TEMP. RAMP SHALL BE CONSTRUCTED IMMEDIATELY UPON REMOVAL OF THE EXISTING HMA SURFACE.
- D. THE BUTT JOINT SHALL BE CONSTRUCTED IMMEDIATELY PRIOR TO PLACING THE PROPOSED HMA COURSES.
- E. TAPER THE TEMP. RAMP AT A RATE OF 3' - 4" (1.02m) PER 1 INCH (25 mm) OF MILLING THICKNESS.
* SEE TYPICAL SECTIONS FOR MILLING THICKNESS.
- F. SEE ARTICLE 406.08 AND 406.14 OF THE STANDARD SPECIFICATIONS FOR "HMA AND/OR PCC SURFACE REMOVAL, BUTT JOINT".
*** 20'-0" (6.1 m) PER 1 (25) RESURFACING (NOTE "A")
10'-0" (3.0 m) PER 1 (25) RESURFACING (NOTE "B")

BASIS OF PAYMENT

- 1. THE BUTT JOINT WILL BE PAID FOR AT THE CONTRACT UNIT PRICE PER SQUARE YARD (SQUARE METER) FOR "HOT-MIX ASPHALT SURFACE REMOVAL - BUTT JOINT" OR FOR "PORTLAND CEMENT CONCRETE SURFACE REMOVAL- BUTT JOINT".
- 2. THE TEMPORARY RAMP AND SAW CUT SHALL BE INCLUDED IN THE UNIT COST FOR HMA OR PCC SURFACE REMOVAL-BUTT JOINT.

ALL DIMENSIONS ARE IN INCHES (MILLIMETERS) UNLESS OTHERWISE SHOWN.

MODEL Default
FILE Name: p:\bids\aw-bentley.com\NVD01\Documents\DOT Office\Bhirket 1\Projects\Bh-S42\2x2\ACADD\B3\CAD\p\res1b02.dgn

USER NAME	Lawrence,DeManche	DESIGNED	M. DE YONG	REVISED	A. ABBAS 03-21-97
		DRAWN		REVISED	M. GOMEZ 04-06-01
PLOT SCALE	100.0000 ' / in.	CHECKED		REVISED	R. BORO 01-01-07
PLOT DATE	11/18/2022	DATE	06-13-90	REVISED	K. SMITH 11-18-22

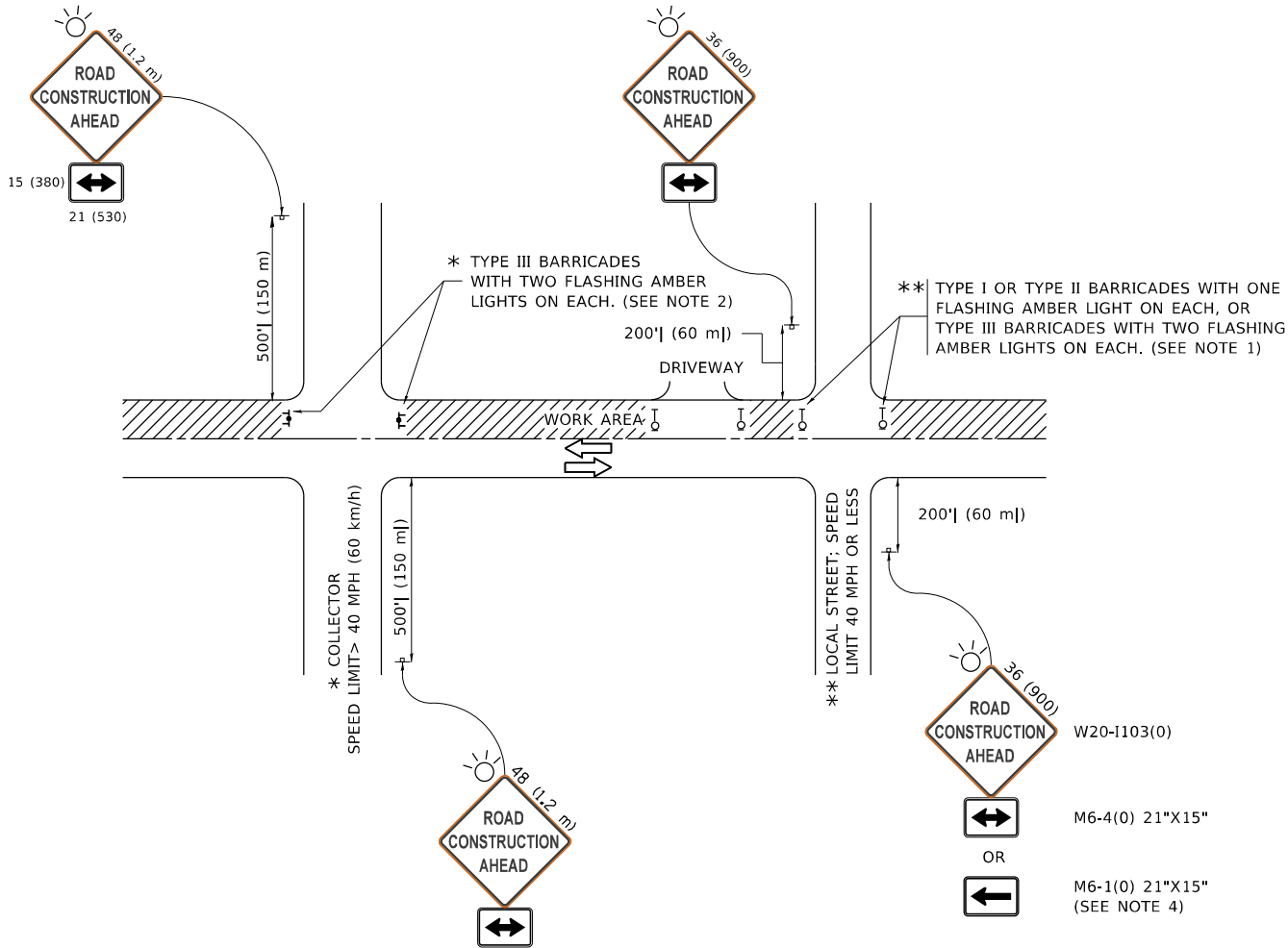
STATE OF ILLINOIS
DEPARTMENT OF TRANSPORTATION

SCALE: NONE		SHEET 1	OF 1	SHEETS	STA.	TO STA.
-------------	--	---------	------	--------	------	---------

BUTT JOINT AND
HMA TAPER DETAILS

F.A.U. RTE.	SECTION	COUNTY	TOTAL SHEETS	SHEET NO.
0079	24-00013-00-RS	MCHENRY	18	14
BD400-05 BD-32		CONTRACT NO. 61L00		
		ILLINOIS	FED. AID PROJECT	

MODEL: Default
FILE NAME: p:\u0000\BIDD\TTC\Hwy48\p\DOT\Documents\DOT Office\081041\Project\081041\0223\11\CA00Data\CA00Sheet\TC10.dgn

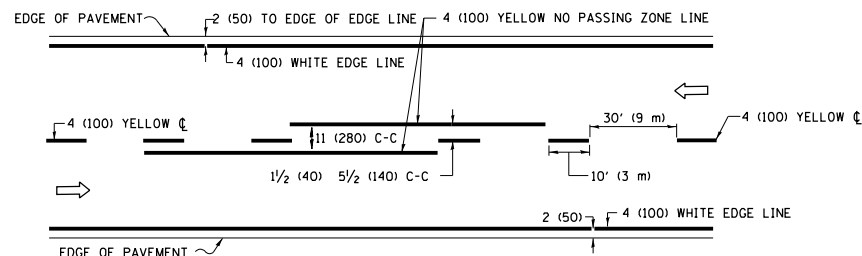


NOTES:

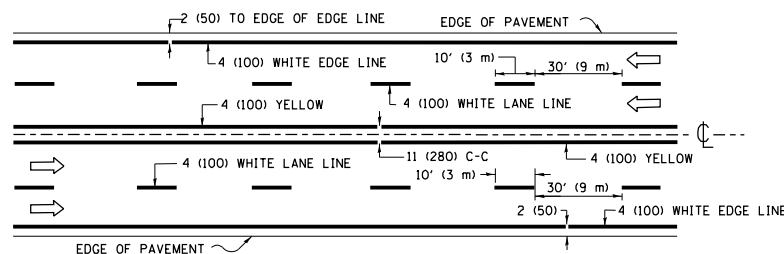
- SIDE ROAD WITH A SPEED LIMIT OF 40 MPH (60 km/h) OR LESS AS SHOWN ON THE DRAWING AND AS DIRECTED BY THE ENGINEER:
 - ONE "ROAD CONSTRUCTION AHEAD" SIGN 36 x 36 (900x900) WITH A FLASHER MOUNTED ON IT APPROXIMATELY 200' (60 m) IN ADVANCE OF THE MAIN ROUTE.
 - THE CLOSED PORTION OF THE MAIN ROUTE SHALL BE PROTECTED BY BLOCKING WITH TYPE I, TYPE II OR TYPE III BARRICADES, 1/3 OF THE CROSS SECTION OF THE CLOSED PORTION.
- SIDE ROAD WITH A SPEED LIMIT GREATER THAN 40 MPH (60 km/h) AS SHOWN ON THE DRAWING AND AS DIRECTED BY THE ENGINEER:
 - ONE "ROAD CONSTRUCTION AHEAD" SIGN 48 x 48 (1.2 m x 1.2 m) WITH A FLASHER MOUNTED ON IT APPROXIMATELY 500' (150 m) IN ADVANCE OF THE MAIN ROUTE.
 - THE CLOSED PORTION OF THE MAIN ROUTE SHALL BE PROTECTED BY BLOCKING WITH TYPE III BARRICADES, 1/2 OF THE CROSS SECTION OF THE CLOSED PORTION.
- CONES MAY BE SUBSTITUTED FOR BARRICADES OR DRUMS AT HALF THE SPACING DURING DAY OPERATIONS. CONES SHALL BE A MINIMUM OF 28 (710) IN HEIGHT.
- WHEN THE SIDE ROAD LIES BETWEEN THE BEGINNING OF THE MAINLINE
- SIGNING AND THE WORK ZONE, A SINGLE HEADED ARROW (M6-1) SHALL BE USED IN LIEU OF THE DOUBLE HEADED ARROW (M6-4).
- WHEN WORK IS BEING PERFORMED ON A SIDE ROAD OR DRIVEWAY, FOLLOW THE APPLICABLE STANDARD(S). THE DIRECTIONAL ARROW (M6-1 OR M6-4) SHALL BE COVERED OR REMOVED WHEN NO LONGER CONSISTENT WITH THE TRAFFIC CONTROL SET-UP.
- ADVANCE WARNING SIGNS ARE TO BE OMITTED ON DRIVEWAYS UNLESS OTHERWISE SPECIFIED IN THE PLANS OR BY THE ENGINEER.
- THE TRAFFIC CONTROL AND PROTECTION FOR SIDE ROADS, INTERSECTIONS, AND DRIVEWAYS SHALL BE INCLUDED IN THE COST OF SPECIFIED TRAFFIC CONTROL STANDARDS OR ITEMS.

All dimensions are in inches (millimeters)
unless otherwise shown.

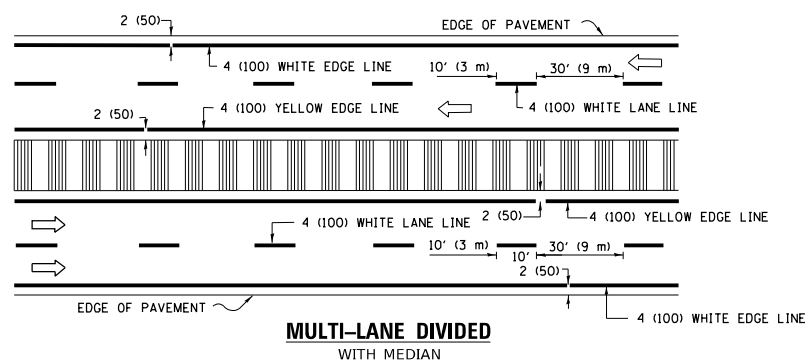
	USER NAME	DESIGNED	REVISED	STATE OF ILLINOIS DEPARTMENT OF TRANSPORTATION	TRAFFIC CONTROL AND PROTECTION FOR SIDE ROADS, INTERSECTIONS, AND DRIVEWAYS	F.A.U. RTE.	SECTION	COUNTY	TOTAL SHEETS	SHEET NO.
		DRAWN	REVISED			0079	24-00013-00-RS	MCHENRY	18	15
	PLOT SCALE	CHECKED	REVISED			TC-10		CONTRACT NO. 61L00		
	PLOT DATE	DATE	REVISED			ILLINOIS FED. AID PROJECT				
	footemj	L.H.A.	A. HOUSEH 10-15-96			SCALE: NONE	SHEET 1 OF 1 SHEETS	STA.	TO STA.	
			T. RAMMACHER 01-06-00							
	50.0000 ' / in.		A. SCHUETZE 07-01-13							
		06-89	A. SCHUETZE 09-15-16							



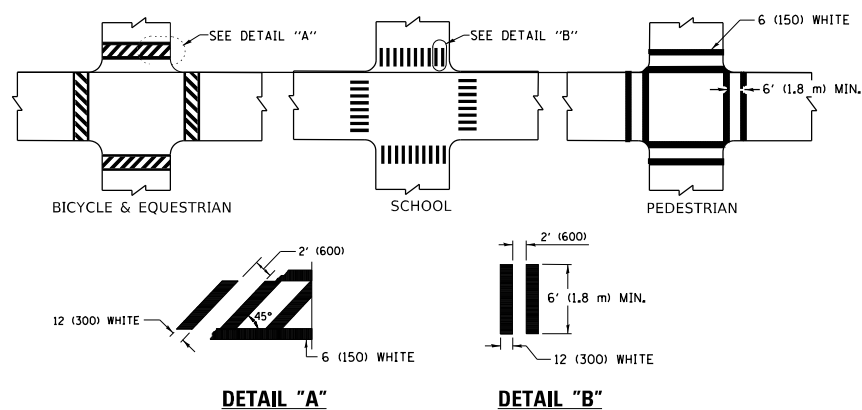
2-LANE ROADWAY



MULTI-LANE UNDIVIDED

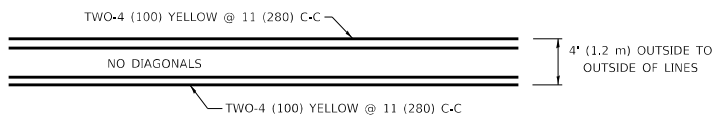


TYPICAL LANE AND EDGE LINE MARKING

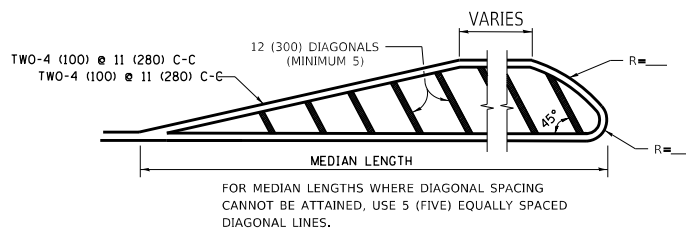


TYPICAL CROSSWALK MARKING

* MARKINGS SHALL BE INSTALLED PARALLEL TO THE CENTERLINE OF THE ROAD WHICH IT CROSSES

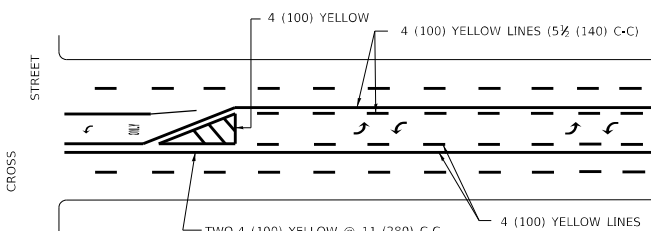


4' (1.2 m) WIDE MEDIANS ONLY

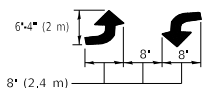


DIAGONAL LINE SPACING: 50' (15 m) C-C (LESS THAN 30MPH (50 km/h))
75' (25 m) C-C 30MPH (50 km/h) TO 45MPH (70 km/h))
150' (45 m) C-C (MORE THAN 45MPH (70 km/h))

MEDIANS OVER 4' (1.2 m) WIDE

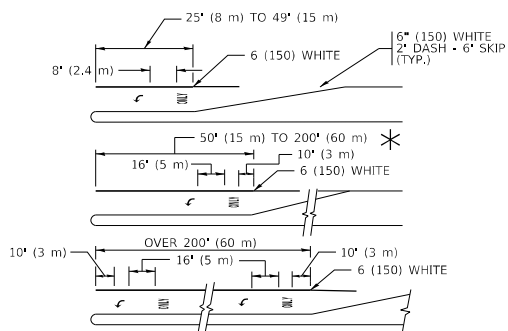


A MINIMUM OF TWO PAIRS OF TURN ARROWS SHALL BE USED, WHITE IN COLOR. ADDITIONAL PAIRS SHALL BE PLACED AT 200' (60 m) TO 300' (90 m) INTERVALS.



MEDIAN WITH TWO-WAY LEFT TURN LANE

TYPICAL PAINTED MEDIAN MARKING

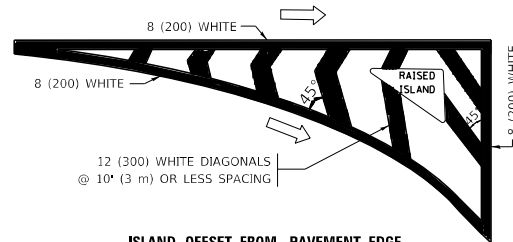


FULL SIZE LETTERS 8' (2.4 m) AND ARROWS SHALL BE USED.

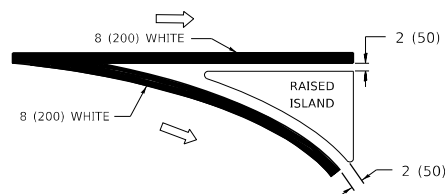
* TURN LANES IN EXCESS OF 400' (120 m) IN LENGTH MAY HAVE AN ADDITIONAL SET OF ARROW - "ONLY" INSTALLED MIDWAY BETWEEN THE OTHER TWO SETS OF ARROW - "ONLY".

TYPICAL LEFT (OR RIGHT) TURN LANE

TYPICAL TURN LANE MARKING

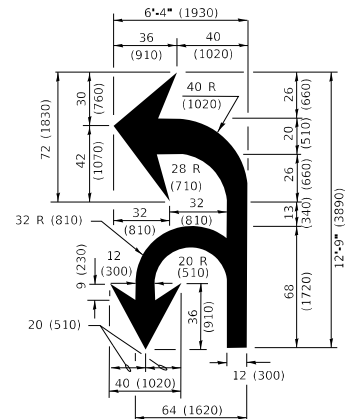


ISLAND OFFSET FROM PAVEMENT EDGE

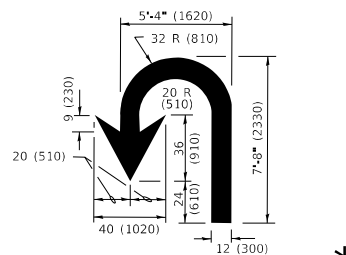


ISLAND AT PAVEMENT EDGE

TYPICAL ISLAND MARKING



COMBINATION LEFT AND U-TURN



U-TURN

LANE REDUCTION TRANSITION

* LANE REDUCTION ARROWS REQUIRED AT SPEEDS OF 45 MPH OR GREATER OR WHEN SPECIFIED IN PLANS.

D(FT)	SPEED LIMIT
345	30
425	35
500	40
580	45
665	50
750	55

TYPE OF MARKING	WIDTH OF LINE	PATTERN	COLOR	SPACING / REMARKS
CENTERLINE ON 2 LANE PAVEMENT	4 (100)	SKIP-DASH	YELLOW	10' (3 m) LINE WITH 30' (9 m) SPACE
CENTERLINE ON MULTI-LANE UNDIVIDED PAVEMENT	2 @ 4 (100)	SOLID	YELLOW	11 (280) C-C
NO PASSING ZONE LINES: FOR ONE DIRECTION FOR BOTH DIRECTIONS	4 (100) 2 @ 4 (100)	SOLID SOLID	YELLOW YELLOW	5½ (140) C-C FROM SKIP-DASH CENTERLINE 11 (280) C-C OMIT SKIP-DASH CENTERLINE BETWEEN
LANE LINES	4 (100) 5 (125) ON FREEWAYS	SKIP-DASH SKIP-DASH	WHITE WHITE	10' (3 m) LINE WITH 30' (9 m) SPACE
DOTTED LINES (EXTENSIONS OF CENTER, LANE OR TURN LANE MARKINGS)	SAME AS LINE BEING EXTENDED	SKIP-DASH	SAME AS LINE BEING EXTENDED	2' (600) LINE WITH 6' (1.8 m) SPACE
EDGE LINES	4 (100)	SOLID	YELLOW-LEFT WHITE-RIGHT	OUTLINE MEDIANS IN YELLOW
TURN LANE MARKINGS	6 (150) LINE; FULL SIZE LETTERS & SYMBOLS (8' (2.4m))	SOLID	WHITE	SEE TYPICAL TURN LANE MARKING DETAIL
TWO WAY LEFT TURN MARKING	2 @ 4 (100) EACH DIRECTION 8' (2.4m) LEFT ARROW	SKIP-DASH AND, SOLID IN PAIRS	YELLOW WHITE	10' (3 m) LINE WITH 30' (9 m) SPACE FOR SKIP-DASH; 5½ (140) C-C BETWEEN SOLID LINE AND SKIP-DASH LINE SEE TYPICAL TWO-WAY LEFT TURN MARKING DETAIL
CROSSWALK LINES (PEDESTRIAN) A. DIAGONALS (BIKE & EQUESTRIAN) B. LONGITUDINAL BARS (SCHOOL)	2 @ 6 (150) 12 (300) @ 45° 12 (300) @ 90°	SOLID SOLID SOLID	WHITE WHITE WHITE	NOT LESS THAN 6' (1.8 m) APART 2' (600) APART 2' (600) APART SEE TYPICAL CROSSWALK MARKING DETAILS.
STOP LINES	24 (600)	SOLID	WHITE	PLACE 4" (1.2 m) IN ADVANCE OF AND PARALLEL TO CROSSWALK, IF PRESENT. OTHERWISE, PLACE AT DESIRED STOPPING POINT. PARALLEL TO CROSSROAD CENTERLINE, WHERE POSSIBLE
PAINTED MEDIANS	2 @ 4 (100) WITH 12 (300) DIAGONALS @ 45° NO DIAGONALS USED FOR 4' (1.2 m) WIDE MEDIANS	SOLID	YELLOW; TWO WAY TRAFFIC WHITE; ONE WAY TRAFFIC	11 (280) C-C FOR THE DOUBLE LINE SEE TYPICAL PAINTED MEDIAN MARKING.
GORE MARKING AND CHANNELIZING LINES	8 (200) WITH 12 (300) DIAGONALS @ 45°	SOLID	WHITE	DIAGONALS: 15' (4.5 m) C-C (LESS THAN 30MPH (50 km/h)) 20' (6 m) C-C 30MPH (50 km/h) TO 45MPH (70 km/h)) 30' (9 m) C-C (OVER 45MPH (70 km/h))
RAILROAD CROSSING	24 (600) TRANSVERSE LINES; "RR" IS 6" (1.8 m) LETTERS; 16 (400) LINE FOR "X"	SOLID	WHITE	SEE STATE STANDARD 780001 AREA OF: "X"=3.6 SQ. FT. (0.33 m ² EACH "X"=54.0 SQ. FT. (5.0 m ² EACH
SHOULDER DIAGONALS (REQUIRED FOR SHOULDERS ≥ 8')	12 (300) @ 45°	SOLID	WHITE - RIGHT YELLOW - LEFT	50' (15 m) C-C (LESS THAN 30MPH (50 km/h)) 75' (25 m) C-C (30 MPH (50 km/h) TO 45MPH (70 km/h)) 150' (45 m) C-C (OVER 45MPH (70 km/h))
U TURN ARROW	SEE DETAIL	SOLID	WHITE	16.3 SF
2 ARROW COMBINATION LEFT AND U TURN	SEE DETAIL	SOLID	WHITE	30.4 SF

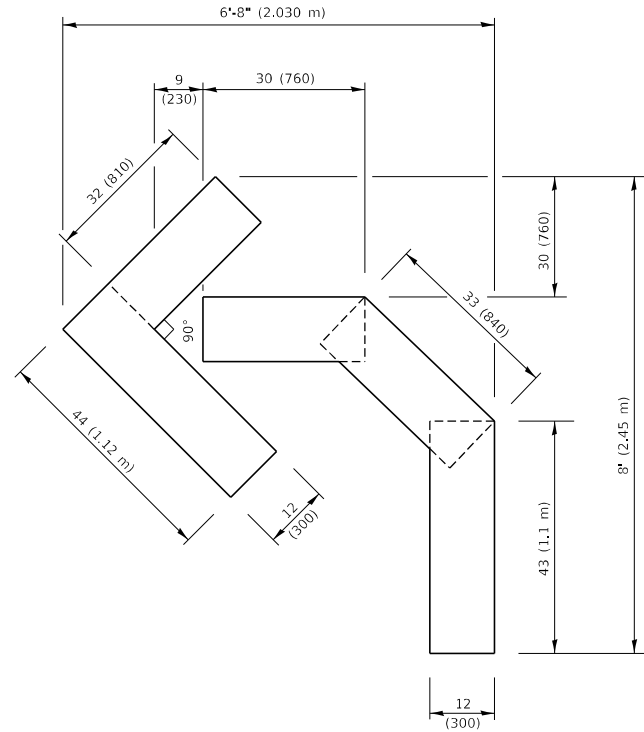
FOR FURTHER DETAILS ON PAVEMENT MARKING REFER TO
STANDARD SPECIFICATIONS FOR ROAD AND BRIDGE
CONSTRUCTION AND STATE STANDARD 780001.

All dimensions are in inches (millimeters) unless otherwise shown.

USER NAME ■ [ootem]	DESIGNED ■ EVERS	REVISED ■ C. JUCIUS 09-09-09
	DRAWN ■	REVISED ■ C. JUCIUS 07-01-13
PLOT SCALE ■ 50.0000 " / in.	CHECKED ■	REVISED ■ C. JUCIUS 12-21-15
PLOT DATE ■ 3/4/2019	DATE ■ 03-19-90	REVISED ■ C. JUCIUS 04-12-16

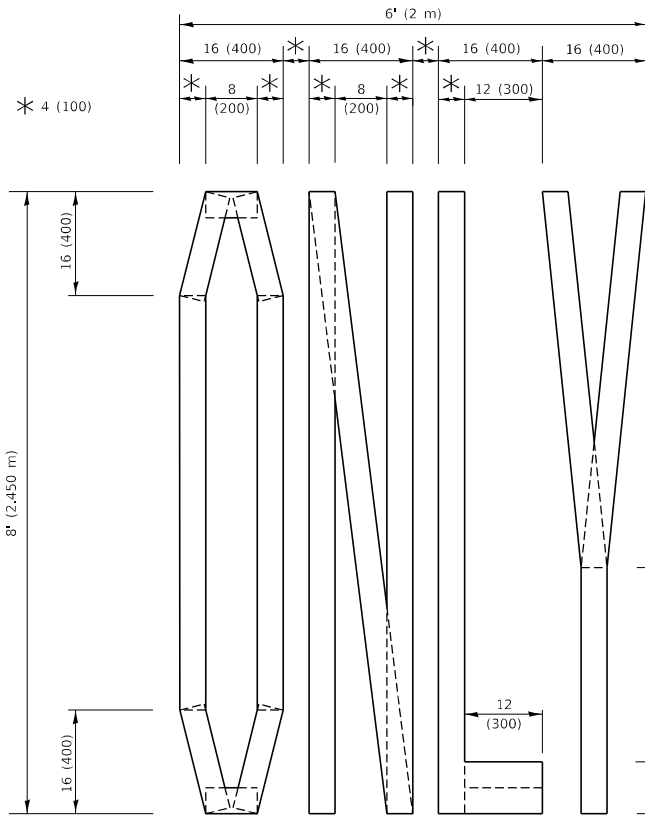
**STATE OF ILLINOIS
DEPARTMENT OF TRANSPORTATION**

<div style="text-align: center;"> DISTRICT ONE TYPICAL PAVEMENT MARKINGS </div>					F.A.U. RTE.	SECTION		COUNTY	TOTAL SHEETS	SHEET NO.
					0079	24-00013-00-RS		MCHENRY	18	16
					TC-13		CONTRACT NO.		61L00	
SCALE: NONE	SHEET	1	OF	2	SHEETS	STA.		TO STA.		



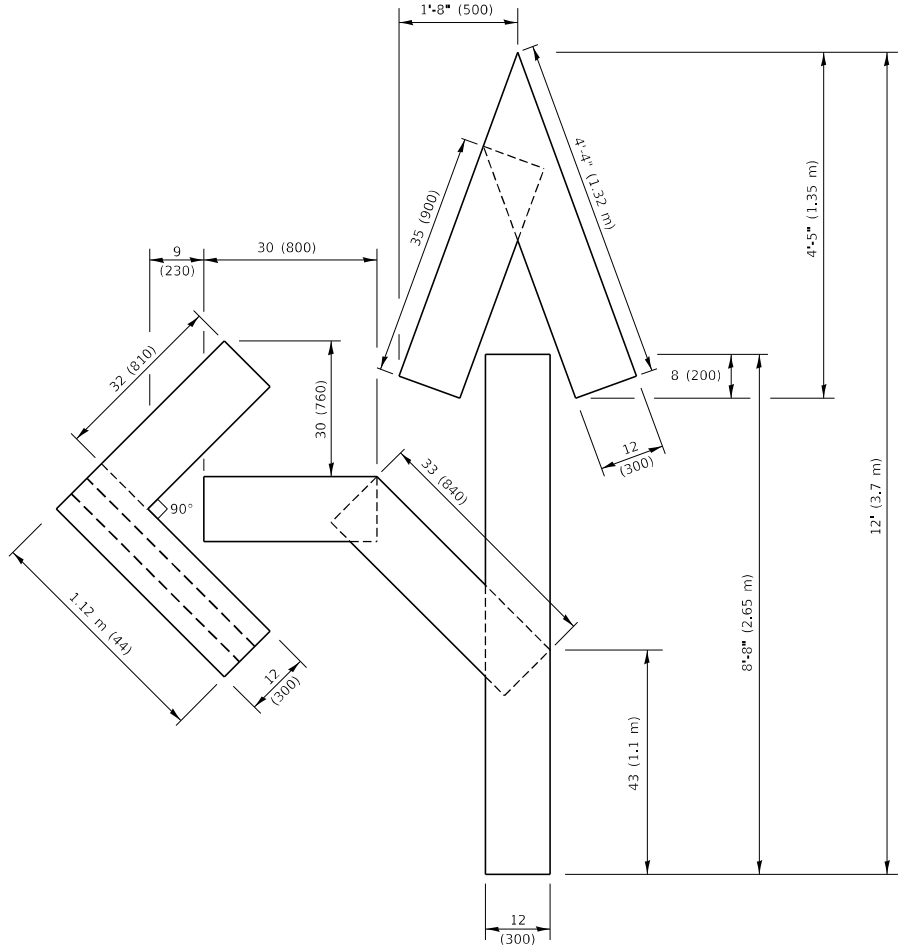
QUANTITY

4 (100) LINE = 45.5 ft. (13.9 m)
15.2 sq. ft. (1.41 sq. m)



QUANTITY

4 (100) LINE = 64.1 ft. (19.5 m)
21.4 sq. ft. (1.99 sq. m)

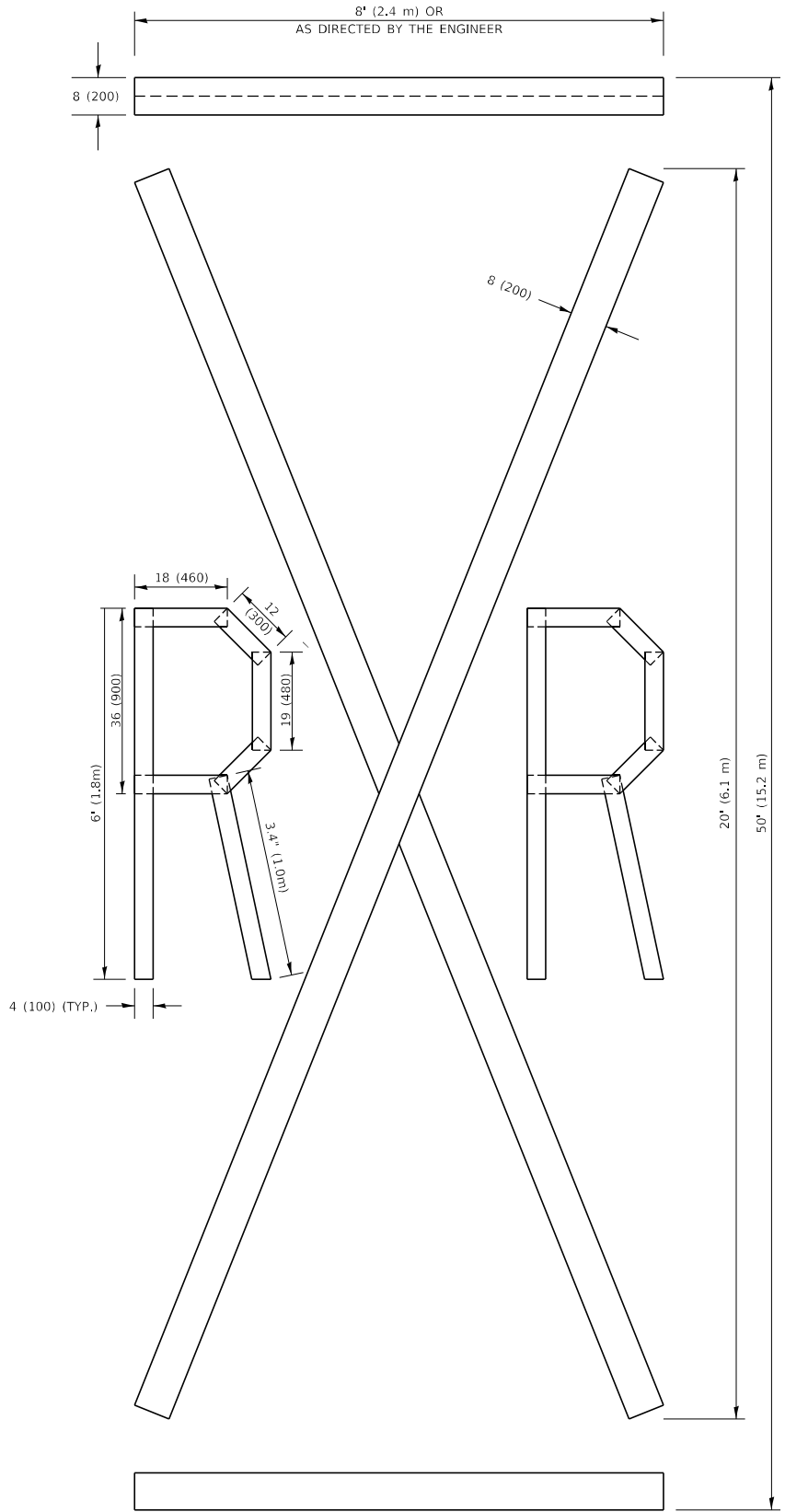


QUANTITY

4 (100) LINE = 82.5 ft. (25.1 m)
27.5 sq. ft. (2.53 sq. m)

NOTE:

ALL QUANTITIES OF PLACEMENT ARE REPRESENTED
IN LINEAR FEET OF 4" LINES TO MATCH THE
4" TEMPORARY TAPE PAY ITEM AND REPRESENTS
THE TOTAL QUANTITY OF 4" TAPE REQUIRED.



QUANTITY

4 (100) LINE = 225.9 ft. (68.9 m)
75.3 sq. ft. (6.99 sq. m)

All dimensions are in inches (millimeters)
unless otherwise shown.

MODEL: Default
FILE NAME: p:\proj\108\FBD\INTEG\108-FBD\DOT Documents\DOT Office\Berket 1\Projects\DK45422\40\CAD\DATA\CAD sheets\16.dgn
16.dgn 3/4/2019 10:37:35 AM User:footemj

USER NAME	footemj	DESIGNED	-	REVISED	- T. RAMMACHER 03-02-98
DRAWN	-	CHECKED	-	REVISED	- E. GOMEZ 08-28-00
PLOT SCALE	50.0068 ' / in.	DATE	- 09-18-94	REVISED	- E. GOMEZ 08-28-00
PLOT DATE	3/4/2019			REVISED	- A. SCHUETZE 09-15-16

STATE OF ILLINOIS
DEPARTMENT OF TRANSPORTATION

SHORT TERM PAVEMENT MARKING LETTERS AND SYMBOLS

SCALE: NONE SHEET 1 OF 1 SHEETS STA. TO STA.

F.A.U. RTE.	SECTION	COUNTY	TOTAL SHEETS	SHEET NO.
0079	24-00013-00-RS	MCHENRY	18	17
TC-16		CONTRACT NO. 61L00		
		ILLINOIS	FED. AID PROJECT	

