

# SUMMARY OF QUANTITIES

80% FED  
20% STATE

CONSTRUCTION CODE

FRANKLIN COUNTY  
FAI 57

JEFFERSON COUNTY  
FAI 57

CODE NO	ITEM	UNIT	TOTAL QTY 1, 2, 3, 4 & ALT A	TOTAL QTY 1, 2, 3, 4 & ALT B	FRANKLIN COUNTY FAI 57					JEFFERSON COUNTY FAI 57				
					ROADWAY (1)		INTERSTATE ROADWAY		BRIDGE (2)		BRIDGE (3)		INTERSTATE ROADWAY	
					ALTERNATE A	ALTERNATE B	ALTERNATE A	ALTERNATE B	SN 028-0090/91	SN 028-0093/94	ALTERNATE A	ALTERNATE B		
					0001	0001	0001	0010	0010	0001	0001	0001		
28000250	TEMPORARY EROSION CONTROL SEEDING	POUND	498	498	498									
28000400	PERIMETER EROSION BARRIER	FOOT	1876	1876	1876									
28000500	INLET AND PIPE PROTECTION	EACH	148	148	83					65				
28100107	STONE RIPRAP, CLASS A4	SQ YD	7994	7994				3123	4871					
28100109	STONE RIPRAP, CLASS A5	SQ YD	128	128						128				
28200200	FILTER FABRIC	SQ YD	8122	8122				3123	4871	128				
31100300	SUBBASE GRANULAR MATERIAL, TYPE A 4"	SQ YD	225399				129939				95460			
31100910	SUBBASE GRANULAR MATERIAL, TYPE A 12"	SQ YD	401216	401216	237575					163641				
31200100	STABILIZED SUBBASE 4"	SQ YD		381750			223215						158535	
40600275	BITUMINOUS MATERIALS (PRIME COAT)	POUND	875328	858938		513188	502234				362140	356704		
40600372	LONGITUDINAL JOINT SEALANT, HALF-WIDTH	FOOT	218029	187960		127760	106396				90269	81564		
40603240	POLYMERIZED HOT-MIX ASPHALT BINDER COURSE, IL-19.0, N90	TON	32624	32624	18221					14403				
40604174	POLYMERIZED HOT-MIX ASPHALT BINDER COURSE, IL-9.5, MIX "E", N90	TON	6341	6341	5049					1292				

2

REVISED 1-8-2025

REV - MS

MODEL: SDO\_2 (Sheet)  
FILE NAME: P:\P\101\Documents\210610000\PTB188\024\_DB\01\2106100102\57-3\plan\p2\2\CAD\_Sheet\078884-4\18-SDO.dgn



USER NAME = jahaas	DESIGNED -	REVISED -
PLOT SCALE = 0.16666633' / in.	DRAWN -	REVISED -
PLOT DATE = 10/16/2024	CHECKED -	REVISED -
	DATE -	REVISED -

STATE OF ILLINOIS  
DEPARTMENT OF TRANSPORTATION

SUMMARY OF QUANTITIES

SCALE: NTS SHEET 2 OF 15 SHEETS STA. TO STA.

F.A.I RTE.	SECTION	COUNTY	TOTAL SHEETS	SHEET NO.
57	(28-2)B-2; (28-1)B-2	*	598	6
CONTRACT NO. 78884				

ILLINOIS FED. AID PROJECT \* FRANKLIN/JEFFERSON

# SUMMARY OF QUANTITIES

80% FED  
20% STATE

## CONSTRUCTION CODE

FRANKLIN COUNTY  
FAI 57

JEFFERSON COUNTY  
FAI 57

CODE NO	ITEM	UNIT	TOTAL QTY 1, 2, 3, 4 & ALT A	TOTAL QTY 1, 2, 3, 4 & ALT B	CONSTRUCTION CODE						
					FRANKLIN COUNTY FAI 57		JEFFERSON COUNTY FAI 57				
					ROADWAY (1)	ROADWAY ALTERNATE A	INTERSTATE ROADWAY ALTERNATE B	BRIDGE (2) SN 028-0090/91	BRIDGE (3) SN 028-0093/94	ROADWAY (4)	INTERSTATE ROADWAY ALTERNATE A
0001	0001	0001	0010	0010	0001	0001	0001				
50100300	REMOVAL OF EXISTING STRUCTURES NO. 1	EACH	1	1				1			
50100400	REMOVAL OF EXISTING STRUCTURES NO. 2	EACH	1	1				1			
50100500	REMOVAL OF EXISTING STRUCTURES NO. 3	EACH	1	1					1		
50100600	REMOVAL OF EXISTING STRUCTURES NO. 4	EACH	1	1					1		
50100700	REMOVAL OF EXISTING STRUCTURES NO. 5	EACH	1	1						1	
50104400	CONCRETE HEADWALL REMOVAL	EACH	18	18	18						
50105220	PIPE CULVERT REMOVAL	FOOT	52	52	52						
50157300	PROTECTIVE SHIELD	SQ YD	1837	1837			435	1402			
50200100	STRUCTURE EXCAVATION	CU YD	388	388			232	156			
50200300	COFFERDAM EXCAVATION	CU YD	672	672			390	282			
50200450	REMOVAL AND DISPOSAL OF UNSUITABLE MATERIALS FOR STRUCTURES	CU YD	296	296						296	
50201121	COFFERDAM (TYPE 2) (LOCATION - 1)	EACH	1	1			1				
50201122	COFFERDAM (TYPE 2) (LOCATION - 2)	EACH	1	1			1				
50201123	COFFERDAM (TYPE 2) (LOCATION - 3)	EACH	1	1			1				
50201124	COFFERDAM (TYPE 2) (LOCATION 4)	EACH	1	1				1			
50201125	COFFERDAM (TYPE 2) (LOCATION 5)	EACH	1	1				1			
50201126	COFFERDAM (TYPE 2) (LOCATION 6)	EACH	1	1				1			
50300100	FLOOR DRAINS	EACH	56	56			24	32			
50300225	CONCRETE STRUCTURES	CU YD	1221.2	1221.2			600.2	621.0			
50300255	CONCRETE SUPERSTRUCTURE	CU YD	1327.2	1327.2			626.1	701.1			

2

REVISÉ 1-7-2025

REV - MS

MODEL: SDO\_5 (Sheet)  
FILE NAME: P:\proj\10610000\PTB188\034\_DB\012\06102157-3\plan\p2\2\CA0\_Sheet502.dgn



USER NAME = jahaas  
DESIGNED -  
DRAWN -  
PLOT SCALE = 0.16666633 1/In.  
CHECKED -  
PLOT DATE = 10/16/2024  
DATE -

REVISED -  
REVISED -  
REVISED -  
REVISED -

STATE OF ILLINOIS  
DEPARTMENT OF TRANSPORTATION

### SUMMARY OF QUANTITIES

SCALE: NTS SHEET 5 OF 15 SHEETS STA. TO STA.

F.A. I RTE. 57	SECTION (28-2)B-2; (28-1)B-2	COUNTY *	TOTAL SHEETS 598	SHEET NO. 9
CONTRACT NO. 78884			ILLINOIS FED. AID PROJECT	

\* FRANKLIN/JEFFERSON

Benchmark: PSM 101+00, Elev. 413.989. IDOT Monument in CL of I-57 at Sta. 101+00, Approx. 0.3 miles S of Ina Overhead Structure.

Existing Structure: SN 041-7024 was originally constructed in 1964 as FAI 57, Section 41-1. The original structure was a single barrel 8'x8' CIP culvert with flared wingwalls, 152'-3" length on a 7 degree skew. The culvert was later lengthened to 174'-6". The structure will be replaced utilizing staged construction.

No Salvage.

Precast option is not allowed.

STA. 97+45.25  
BUILT 202X BY  
STATE OF ILLINOIS  
F.A.I. RT. 57  
SEC. (28-2)(B-2); (28-1)(B-2)  
LOADING HL-93  
STR. NO. 041-7101

NAME PLATE  
See Std. 515001

INDEX OF SHEETS

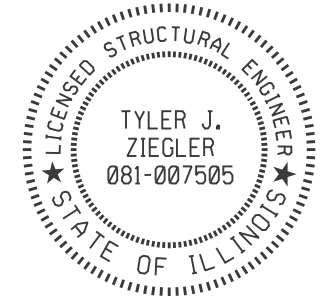
- General Plan & Elevation
- Stage Construction Details
- Temporary Soil Retention System
- Temporary Concrete Barrier
- Culvert Details
- Bar Splicer Assembly Details
- Boring Logs

TOTAL BILL OF MATERIAL

ITEM	UNIT	QUANTITY
Porous Granular Embankment	Cu. Yd.	1,010
Stone Riprap, Class A5	Sq. Yd.	128
Filter Fabric	Sq. Yd.	128
Removal of Existing Structures No. 5	Each	1
Reinforcement Bars	Pound	61,150
Bar Splicers	Each	140
Name Plates	Each	1
Temporary Soil Retention System	Sq. Ft.	267
Concrete Box Culverts	Cu. Yd.	298.9
Geocomposite Wall Drain	Sq. Yd.	340
Waterproofing Membrane System for Buried Structures	Sq. Yd.	340
Removal and Disposal of Unsuitable Materials for Structures	Cu. Yd.	296
Rock Fill - Foundation	Ton	607

The Contractor shall excavate to the specified depth for placement of the Rock Fill Foundation under the culvert extensions and the wingwall footings (if present) and allow the District inspectors to test and verify that the foundation soils have a minimum  $Q_u$  of at least 1.0 tsf. If the required soil strength is not present, the Contractor shall excavate an additional depth and width as directed by the Engineer to locate suitable strength material. The excavated area shall then be backfilled to the proper elevations using Rockfill capped with 6" of Coarse Aggregate. Cost of excavation and backfill material will be paid for according to the special provision.

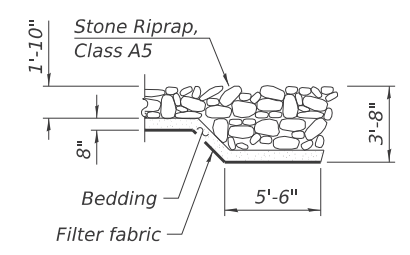
*[Signature]*  
11-25-2024  
ILLINOIS STRUCTURAL NO. 081-007505



Expires 11-30-2024

GENERAL NOTES

- See roadway plans for quantities of Temporary Concrete Barrier, Earth Excavation, and Pavement Removal.
- Layout of the slope protection system may be varied to suit ground conditions in the field as directed by the Engineer.



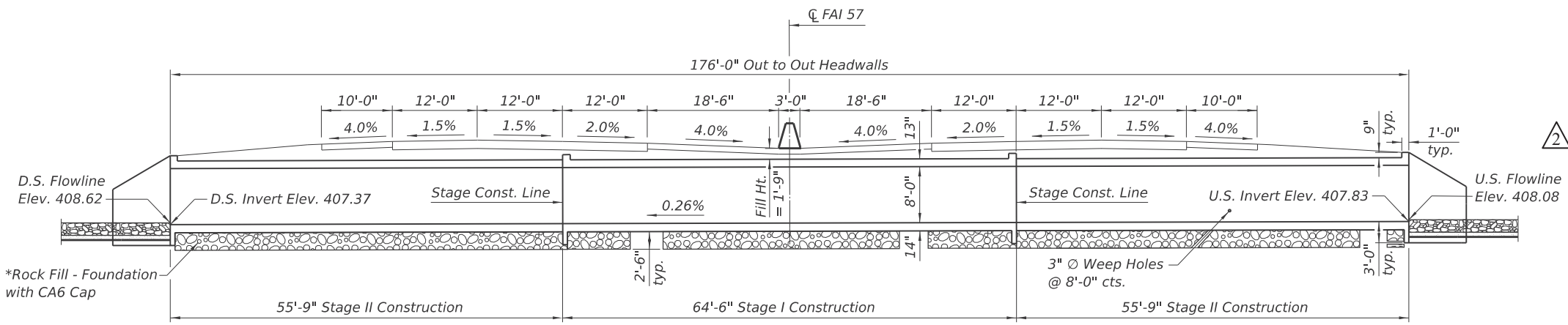
SECTION A-A

GENERAL PLAN AND ELEVATION  
I-57 OVER UNNAMED DITCH  
F.A.I. 57 - SEC. (28-2)(B-2); (28-1)(B-2)  
JEFFERSON COUNTY  
STA. 97+45.25  
STRUCTURE NO. 041-7101

DESIGN SPECIFICATIONS  
2020 AASHTO LRFD Bridge Design Specifications, 9th Edition

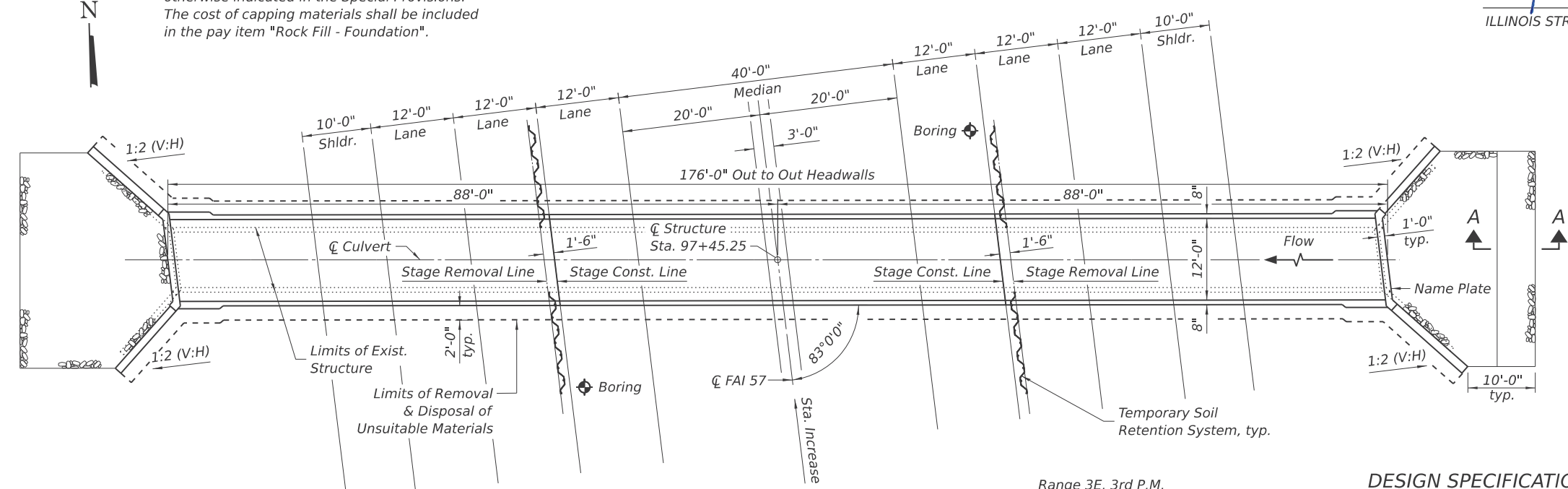
LOADING HL-93  
Allow 50#/sq. ft. for future wearing surface.

DESIGN STRESSES  
FIELD UNITS  
 $f'_c = 3,500$  psi  
 $f_y = 60,000$  psi (Reinforcement)

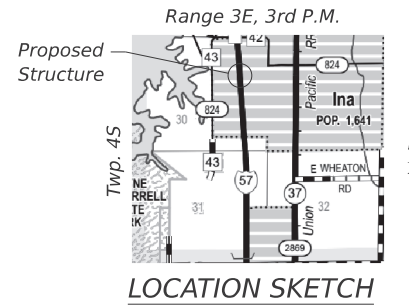


LONGITUDINAL SECTION  
(Looking North)

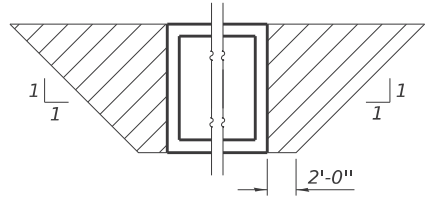
\*The Rock Fill - Foundation shall be capped with 6 in of CA6 and satisfy the Standard Specification unless otherwise indicated in the Special Provisions. The cost of capping materials shall be included in the pay item "Rock Fill - Foundation".



PLAN



LOCATION SKETCH



PAY LIMITS FOR POROUS GRANULAR EMBANKMENT  
(Hatched area)

HYDRAULIC DATA  
Drainage Area = 0.57 sq. mi.  
Design Discharge = 748 cfs  
Design Headwater Elevation = 416.05  
100 Year Discharge = 840 cfs  
100 Year Headwater Elevation = 416.72

REVISED 1-9-2025

MODEL: 1 [Sheet] FILE NAME: P:\Transportation\4856-IDOT-198-34 Dkt. 9-1-V1-WO32024-Structures\CAD - ORD\Sheets\SN 041-7024-1\_GPE.dgn



USER NAME = tziegler	DESIGNED - TAW	REVISED - 1/8/2025 TJZ
	DRAWN - TAW	REVISED -
	CHECKED - TJZ	REVISED -
PLOT DATE = 11/25/2024	DATE - 7/10/2024	REVISED -

STATE OF ILLINOIS  
DEPARTMENT OF TRANSPORTATION

GENERAL PLAN AND ELEVATION  
STRUCTURE NO. 041-7101

SCALE: SHEET OF SHEETS STA. TO STA.

F.A.I. RTE.	SECTION	COUNTY	TOTAL SHEETS	SHEET NO.
57	(28-2)B-2; (28-1)B-2	JEFFERSON	598	382
CONTRACT NO. 78884				

ILLINOIS FED. AID PROJECT