

SHEET NO.	ITEM
1	COVER SHEET
2	GENERAL NOTES, UTILITIES, & COMMITMENTS
3-4	SUMMARY OF QUANTITIES
5-8	TYPICAL SECTIONS
9-10	SCHEDULES
11-16	PLAN SHEETS
17-18	INTERSECTION DETAIL SHEETS
19	CONSTRUCTION DETAILS

HIGHWAY STANDARDS

000001-08	STANDARD SYMBOLS, ABBREVIATIONS AND PATTERNS
001006	DECIMAL OF AN INCH AND OF A FOOT
424001-12	PERPENDICULAR CURB RAMPS FOR SIDEWALKS
424021-07	DEPRESSED CORNER FOR SIDEWALKS
442201-03	CLASS C AND D PATCHES
602416-09	PRECAST MANHOLE TYPE A 8' (2.44 m) DIAMETER
602601-06	PRECAST REINFORCED CONCRETE FLAT SLAB TOP
602701-02	MANHOLE STEPS
604006-05	FRAME AND GRATE TYPE 3
606301-04	PC CONCRETE ISLANDS AND MEDIANS
701301-04	LANE CLOSURE, 2L, 2W, SHORT TIME OPERATIONS
701306-04	LANE CLOSURE, 2L, 2W, SLOW MOVING OPERATIONS DAY ONLY
701501-06	URBAN LANE CLOSURE, 2L, 2W, UNDIVIDED
701701-10	URBAN LANE CLOSURE, MULTILANE INTERSECTION
701801-06	SIDEWALK, CORNER OR CROSSWALK CLOSURE
701901-10	TRAFFIC CONTROL DEVICES
720001-01	SIGN PANEL MOUNTING DETAILS
720006-04	SIGN PANEL ERECTION DETAILS
728001-01	TELESCOPING STEEL SIGN SUPPORT
780001-05	TYPICAL PAVEMENT MARKINGS
782001-01	CURB REFLECTORS
814001-03	HANDHOLES
886001-01	DETECTOR LOOP INSTALLATIONS
886006-01	TYPICAL LAYOUTS FOR DETECTOR LOOPS

STATE OF ILLINOIS
DEPARTMENT OF TRANSPORTATION

PLANS FOR PROPOSED

**STU FUNDS
VILLAGE OF BETHALTO
FAU 8960**

ERWIN PLEGGE BLVD. PH 1 & 2 RESURFACING

MADISON COUNTY

SECTION: 22-00033-01-RS & 23-00033-02-RS

PROJECT NO.: A1DB(461)

JOB NO.: C-98-014-26

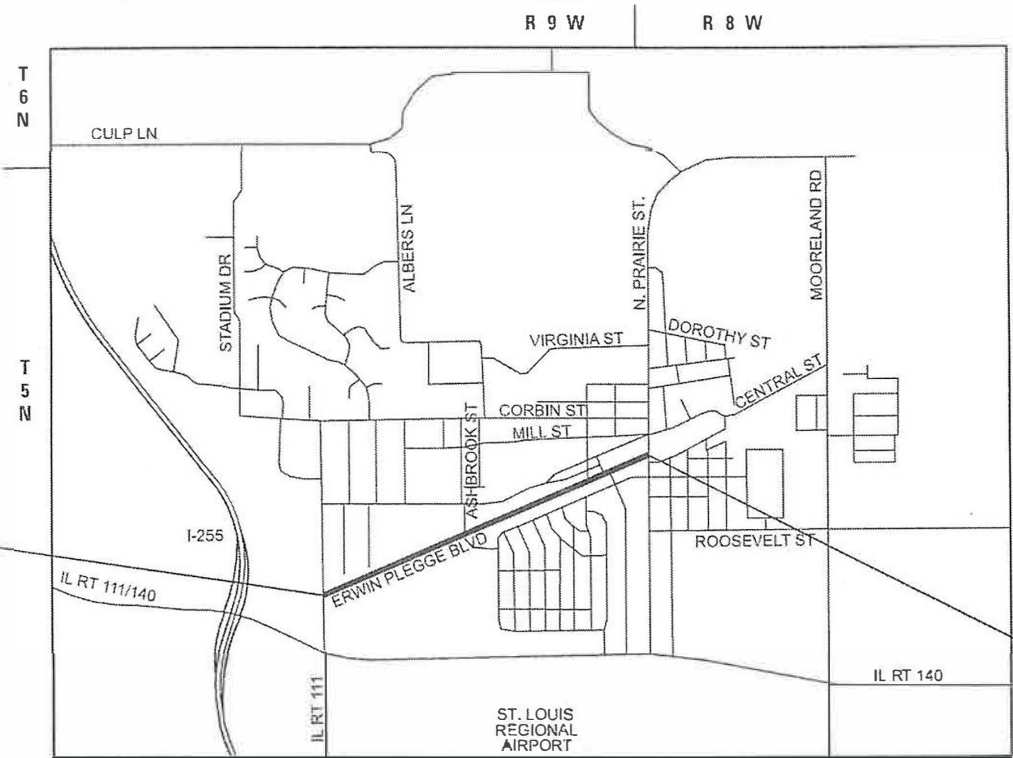
F.A.U. RTE.	SECTION	COUNTY	TOTAL SHEETS	SHEET NO.
8960	*	MADISON	10	1

CONTRACT NO. 97847



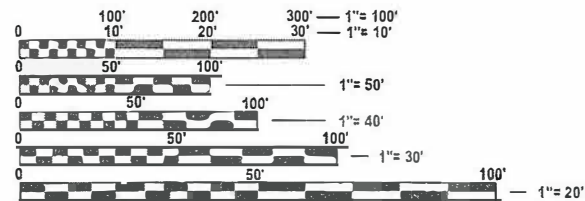
**BEGIN RESURFACING
STA 9 + 31**

**END RESURFACING
STA 68 + 51**



LOCATION MAP

NOT TO SCALE
GROSS LENGTH = 5,920 FEET (1.121 MILES)
NET LENGTH = 5,920 FEET (1.121 MILES)

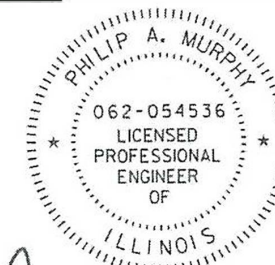


FULL SIZE PLANS HAVE BEEN PREPARED USING STANDARD ENGINEERING SCALES. REDUCED SIZED PLANS WILL NOT CONFORM TO STANDARD SCALES. IN MAKING MEASUREMENTS ON REDUCED PLANS, THE ABOVE SCALES MAY BE USED.

J.U.L.I.E.
JOINT UTILITY LOCATION INFORMATION FOR EXCAVATION
1-800-892-0123
OR 811

DESIGN DESIGNATION

CLASSIFICATION	=	MINOR ARTERIAL
DESIGN SPEED	=	45 MPH
CURRENT ADT (2021)	=	7,650 (FROM N OLD BETHALTO RD TO ASHBROOK ST)
	=	5,950 (FROM ASHBROOK ST TO S WALNUT ST)
	=	5,650 (FROM S WALNUT ST TO PRARIE ST)
DESIGN YEAR ADT (2044)	=	8,450 (FROM N OLD BETHALTO RD TO ASHBROOK ST)
	=	6,550 (FROM ASHBROOK ST TO S WALNUT ST)
	=	6,250 (FROM S WALNUT ST TO PRARIE ST)



Philip A. Murphy
PHILIP A. MURPHY
IL P.E. NO. 062-054536
EXPIRES: 11/30/2025

STATE OF ILLINOIS DEPARTMENT OF TRANSPORTATION	
APPROVED	<i>Gary Bost</i> DATE <i>08/27/2024</i>
GARY BOST MAYOR OF BETHALTO	
PASSED	<i>RJW</i> DATE <i>10-28-2024</i>
DISTRICT 8 ENGINEER OF LOCAL ROADS & STREETS	
<i>10-28-2024</i>	
RELEASING FOR BID BASED ON LIMITED REVIEW	DATE
<i>[Signature]</i> REGION FIVE ENGINEER	



Collinsville
105 Lorton Court, Suite 1
Collinsville, IL 62234
618.245.2700

St. Louis
730 Olive, Suite 700
St. Louis, MO 63101
314.588.8361

Belleville
1 South Church, Suite 200
Belleville, IL 62220
618.416.4928

St. Charles
820 South Main, Suite 309
St. Charles, MO 63001
636.453.6277

www.oatesassociates.com
ILLINOIS DESIGN FIRM LICENSE NO.: 184.001115

**PRINTED BY THE AUTHORITY
OF THE STATE OF ILLINOIS**

GENERAL NOTES

UTILITIES

- THE FOLLOWING UTILITY COMPANIES MAY HAVE FACILITIES LOCATED WITHIN THE LIMITS OF CONSTRUCTION WHICH MAY REQUIRE ADJUSTMENT, RELOCATION OR REMOVAL. REFER TO THE "STATUS OF UTILITIES TO BE ADJUSTED" SPECIAL PROVISION FOR ADDITIONAL INFORMATION.

AT&T (TELEPHONE)
KEVIN URBANEK
160 W. DIVISION ST
MARYVILLE, IL 62062
(618) 346-6426

CHARTER COMMUNICATIONS (COMMUNICATIONS)
RICHARD GILREATH
815 CHARTER COMMONS
TOWN & COUNTRY, MO 63017
(636) 387-6650

VILLAGE OF BETHALTO (WATER, SEWER, & TRAFFIC SIGNALS)
101 S. PRAIRIE ST
BETHALTO, IL 62010
(618) 692-7535

AMEREN IP (GAS & ELECTRIC)
JOHN WESTERHEIDE
2600 NORTH CENTER
MARYVILLE, IL 62062
(618) 346-1245

GENERAL

- THE CONTRACTOR SHALL VERIFY ALL DIMENSIONS AND CONDITIONS IN THE FIELD PRIOR TO ORDERING MATERIALS AND COMMENCING CONSTRUCTION.
- THE CONTRACTOR SHALL CONFINE ALL OPERATIONS TO THE CONSTRUCTION LIMITS LINE SHOWN ON THE PLANS. ANY AREA DISTURBED BEYOND THESE LIMITS SHALL BE RESTORED TO ITS ORIGINAL CONDITION AT THE CONTRACTOR'S EXPENSE.
- THE CONTRACTOR SHALL STAGE ALL WORK IN SUCH A WAY AS TO MAINTAIN INGRESS AND EGRESS TO ALL ABUTTING PROPERTIES AT ALL TIMES DURING CONSTRUCTION. THE COST OF ALL MATERIALS REQUIRED AND ALL LABOR NECESSARY TO COMPLY WITH THIS PROVISION WILL NOT BE PAID FOR SEPARATELY BUT SHALL BE CONSIDERED AS INCLUDED IN THE UNIT BID PRICES OF THE CONTRACT.
- THE CONTRACTOR SHALL FERTILIZE, SEED AND MULCH ALL EARTH SURFACES DISTURBED BY CONSTRUCTION. FERTILIZER, SEEDING AND MULCH WITHIN THE CONSTRUCTION LIMITS SHALL BE INCLUDED IN THE UNIT PRICES BID AND NO ADDITIONAL COMPENSATION WILL BE ALLOWED.

PAVING

- THE CONTRACTOR SHALL NOTE THE LOCATION OF ALL MANHOLE AND VALVE COVER FRAMES AND LIDS LOCATED WITHIN RESURFACING LIMITS. APPROPRIATE CARE SHALL BE TAKEN TO PROTECT THESE ITEMS DURING MILLING OPERATIONS.
- THE THICKNESS OF THE HOT-MIX ASPHALT MIXTURES SHOWN ON THE PLANS IS THE NOMINAL THICKNESS. DEVIATIONS FROM THE NOMINAL THICKNESS WILL BE PERMITTED WHEN SUCH DEVIATIONS OCCUR DUE TO IRREGULARITIES IN THE EXISTING SURFACE OR BASE ON WHICH THE HMA MIXTURES ARE PLACED.
- ALL PATCHING SHALL BE COMPLETED PRIOR TO HOT-MIX ASPHALT SURFACE REMOVAL.
- A QUANTITY OF AGGREGATE BASE COURSE TYPE B, 12" HAS BEEN INCLUDED FOR USE AS A STABILIZED BASE FOR PATCH AREAS AS DETERMINED BY THE ENGINEER. IF BASE IS REQUIRED, AN ESTIMATED QUANTITY OF EARTH EXCAVATION HAS BEEN INCLUDED IN THE SUMMARY OF QUANTITIES.
- AT VARIOUS LOCATIONS, IT MAY BE NECESSARY TO TRANSITION PROPOSED COMBINATION CONCRETE CURB AND GUTTER TO MEET EXISTING CURBS OR GUTTERS. THE MINIMUM LENGTH OF TRANSITIONAL COMBINATION CURB AND GUTTER SHALL BE 10 FEET, UNLESS DIRECTED OTHERWISE BY THE ENGINEER.

DRAINAGE

- THE OFFSETS TO ALL INLETS AND MANHOLES ARE GIVEN TO THE CENTER OF THE OPENING AT THE BASE OF THE FRAME AND GRATE OR LID. CONCENTRIC DRAINAGE STRUCTURES WERE ASSUMED WHEN CALCULATING THESE DIMENSIONS.
- THE CONTRACTOR SHALL INCLUDE THE COST OF MAKING CONNECTIONS WITH EXISTING STORM SEWER IN THE CONTRACT UNIT PRICE FOR THE PROPOSED DRAINAGE STRUCTURE INVOLVED.

PAVEMENT MARKING

- THE CONTRACTOR SHALL APPLY SHORT-TERM PAVEMENT MARKINGS TO THE MILLED SURFACE. A QUANTITY FOR SHORT-TERM PAVEMENT MARKING EQUAL TO THE AMOUNT OF PERMANENT PAVEMENT MARKING TIMES THE NUMBER OF REQUIRED APPLICATIONS HAS BEEN INCLUDED IN THE PLANS. TWO APPLICATIONS HAVE BEEN ASSUMED – ONE APPLICATION AFTER MILLING AND A SECOND AFTER RESURFACING. SHORT-TERM PAVEMENT MARKING REMOVAL FROM THE FINAL SURFACE WILL BE THE ONLY REMOVAL PAID FOR.
- THE PAVEMENT MARKING LOCATIONS SHOWN IN THE PLANS ARE APPROXIMATE. PROPOSED CROSSWALKS AND STOP BARS SHALL BE ADJUSTED AS DIRECTED BY THE ENGINEER, IF NECESSARY, TO MATCH FIELD CONDITIONS.

APPROXIMATE QUANTITIES, SYMBOLS & ABBREVIATIONS

- THE FOLLOWING ITEMS AND APPROXIMATE QUANTITIES ARE INCLUDED IN THE "SUMMARY OF QUANTITIES" IN ORDER TO ESTABLISH A UNIT COT FOR WORK WHICH MAY BE REQUIRED TO CONTRUCT THIS SECTION. THE ACTUAL QUANTITY OF EACH ITEM SHALL BE DETERMINED BY THE ENGINEER IN TH EFIELD

LOCATING UNDERGROUND CABLE 300 FEET

- THE FOLLOWING SYMBOLS, ABBREVIATIONS AND PATTERNS SUPPLEMENT OR SUPERCEDE HIGHWAY STANDARD 000001:

BO	BY OTHERS (USED IN CONJUNCTION WITH TBA & TBR)
CONSTR	CONSTRUCTION
CP	CONTROL POINT
ESMT	EASEMENT
ELEV	ELEVATION
K	LENGTH OF VERTICAL CURVE PER PERCENT GRADE DIFFERENCE
N/F	NOW OR FORMERLY
O/C	OIL AND CHIP
PERM	PERMANENT
PVI	POINT OF VERTICAL INTERSECTION
PVC	POLYVINYL CHLORIDE PIPE
TCE	TEMPORARY CONSTRUCTION EASEMENT
TUP	TEMPORARY USE PERMIT
TBA	TO BE ADJUSTED
TBRL	TO BE RELOCATED
TYP	TYPICAL
W	WIDTH

COMMITMENTS

- NONE.

MIXTURES TABLE

LOCATION(S):	ERWIN PLEGGÉ BLVD
MIXTURE USE(S):	SURFACE
PG:	PG 64-22
DESIGN AIR VOIDS:	4.0% @ Ndes=70
MIXTURE COMPOSITION:	IL-9.5
FRICTION AGG:	MIXTURE "C"
MIXTURE WEIGHT:	112.0 LB/SQ YD/IN
QUALITY MANAGEMENT PROGRAM:	QCP
SUBLOT SIZE:	1,000 TONS
MATERIAL TRANSFER DEVICE (REQUIRED?)	NO

MODEL: General Notes (Sheet)
FILE NAME: H:\1223082 - Erwin Plegge Resurfacing Ph. 1 & 2\CADD\Microstation\CADD Sheets\0823082-shr-gemnote.dgn



USER NAME = philMurphy	DESIGNED -	REVISED -
	DRAWN -	REVISED -
	CHECKED -	REVISED -
PLOT DATE = 9/9/2024	DATE -	REVISED -

**STATE OF ILLINOIS
DEPARTMENT OF TRANSPORTATION**

GENERAL NOTES

SCALE: SHEET 1 OF 1 SHEETS STA. TO STA.

F.A.U. RTE. 8960	SECTION *	COUNTY MADISON	TOTAL SHEETS 19	SHEET NO. 2
CONTRACT NO. 97847				
ILLINOIS FED. AID PROJECT				

SI	SP	CODE NO.	ITEM	UNIT	TOTAL QUANTITY
		20200100	EARTH EXCAVATION	CU YD	20
		35101600	AGGREGATE BASE COURSE, TYPE B 4"	SQ YD	122
		35102400	AGGREGATE BASE COURSE, TYPE B 12"	SQ YD	14
		40600290	BITUMINOUS MATERIALS (TACK COAT)	POUND	8,453
		40600370	LONGITUDINAL JOINT SEALANT	FOOT	5,921
		40600990	TEMPORARY RAMP	SQ YD	704
		40604052	HOT-MIX ASPHALT SURFACE COURSE, IL-9.5, MIX "C", N70	TON	2,104
		42400100	PORTLAND CEMENT CONCRETE SIDEWALK 4 INCH	SQ FT	567
		42400800	DETECTABLE WARNINGS	SQ FT	129
		44000157	HOT-MIX ASPHALT SURFACE REMOVAL, 2"	SQ YD	18,700
		44000500	COMBINATION CURB AND GUTTER REMOVAL	FOOT	333
		44201741	CLASS D PATCHES, TYPE II, 8 INCH	SQ YD	14
		60224447	MANHOLES, TYPE A, 7'-DIAMETER, TYPE 3 FRAME AND GRATE	EACH	1
		60500060	REMOVING INLETS	EACH	1

SI	SP	CODE NO.	ITEM	UNIT	TOTAL QUANTITY
		60605000	COMBINATION CONCRETE CURB AND GUTTER, TYPE B-6.24	FOOT	237
		60608600	COMBINATION CONCRETE CURB AND GUTTER, TYPE M-6.06	FOOT	48
		60610400	COMBINATION CONCRETE CURB AND GUTTER, TYPE M-6.24	FOOT	37
	*	60610900	COMBINATION CONCRETE CURB AND GUTTER, TYPE M-6.24 (VARIABLE WIDTH GUTTER FLAG)	FOOT	30
		60618300	CONCRETE MEDIAN SURFACE, 4 INCH	SQ FT	156
		67100100	MOBILIZATION	L SUM	1
		70100460	TRAFFIC CONTROL AND PROTECTION, STANDARD 701306	L SUM	1
		70102620	TRAFFIC CONTROL AND PROTECTION, STANDARD 701501	L SUM	1
		70102635	TRAFFIC CONTROL AND PROTECTION, STANDARD 701701	L SUM	1
		70300100	SHORT TERM PAVEMENT MARKING	FOOT	1,294
		70300150	SHORT TERM PAVEMENT MARKING REMOVAL	SQ FT	427
	*	72000100	SIGN PANEL - TYPE 1	SQ FT	197
		72400100	REMOVE SIGN PANEL ASSEMBLY - TYPE A	EACH	24
	*	72800100	TELESCOPING STEEL SIGN SUPPORT	FOOT	376

NOTES: SI = SPECIALTY ITEM
SP = SEE PROJECT SPECIFIC SPECIAL PROVISIONS

MODEL: Summary of Quantities-1 (Sheet)
FILE NAME: H:\P\23082 - Erwin Ploggs Resurfacing Ph. 1 & 2\CADD\Microstation\CADD Sheets\DR223082-SH-SQO.dgn



USER NAME = nick.moore
PLOT DATE = 9/30/2024

DESIGNED -
DRAWN -
CHECKED -
DATE -

REVISED -
REVISED -
REVISED -
REVISED -

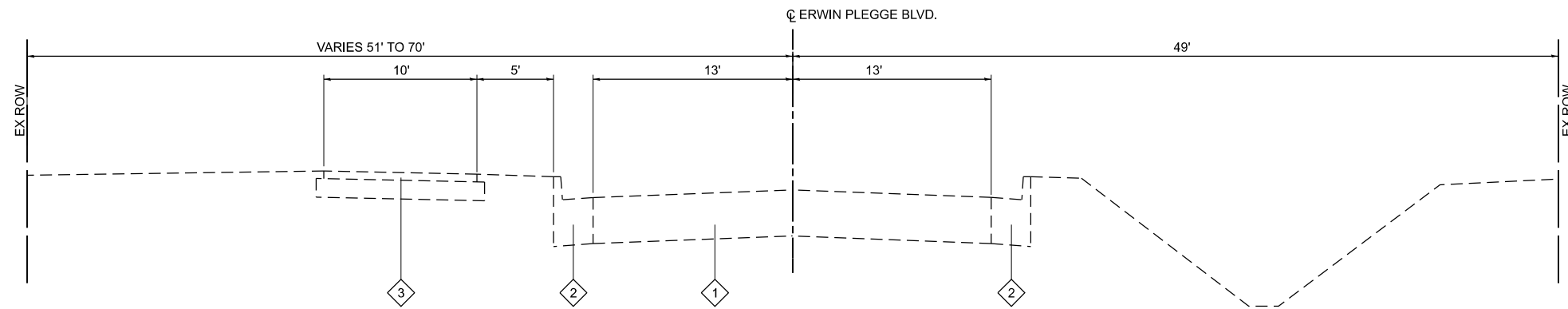
STATE OF ILLINOIS
DEPARTMENT OF TRANSPORTATION

SUMMARY OF QUANTITIES

SCALE: SHEET 1 OF 2 SHEETS STA. TO STA.

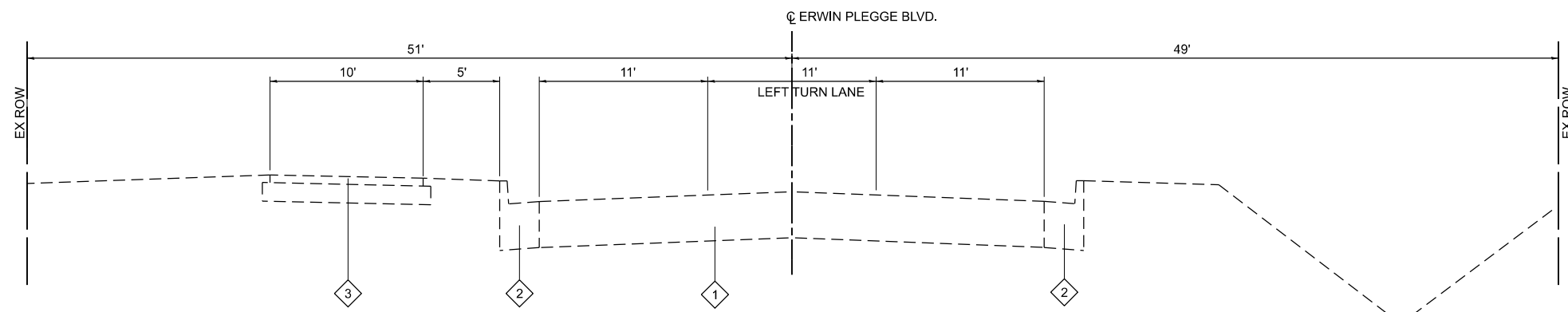
F.A.U. RTE	SECTION	COUNTY	TOTAL SHEETS	SHEET NO.
8960	*	MADISON	19	3
CONTRACT NO. 97847				
ILLINOIS FED. AID PROJECT				

*22-00033-01-RS & 23-00033-02-RS



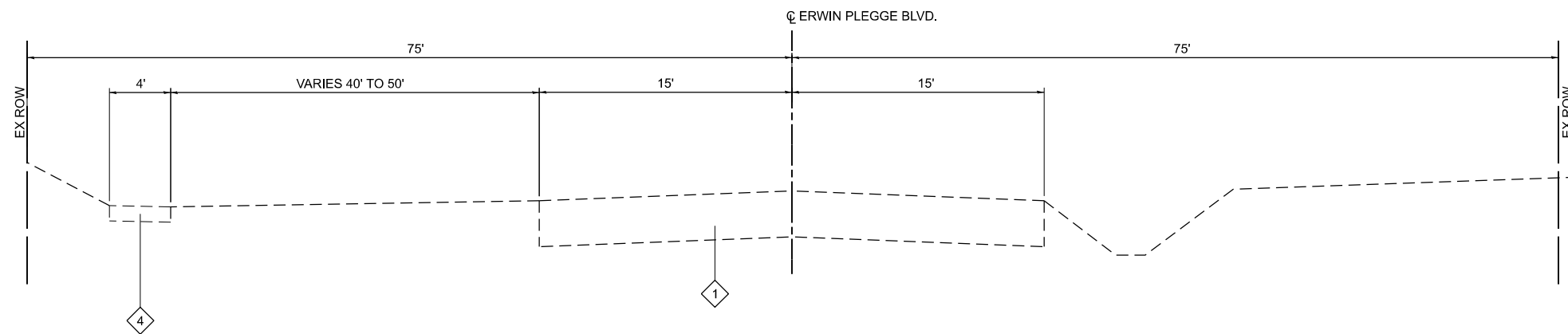
EXISTING ERWIN PLEGGE BLVD.

STA. 20+00 TO STA. 58+35



EXISTING ERWIN PLEGGE BLVD.

STA. 10+00 TO STA. 20+00



EXISTING ERWIN PLEGGE BLVD.

STA. 9+31 TO STA. 10+00

TYPICAL SECTION LEGEND

- ① EXISTING HMA PAVEMENT
- ② EXISTING B-6.24 CONCRETE CURB AND GUTTER
- ③ EXISTING HMA MULTI-USE PATH
- ④ EXISTING PCC SIDEWALK
- ⑤ PROPOSED HOT-MIX ASPHALT, IL-9.5, MIX "C", N70, 2"
- ⑥ PROPOSED HOT-MIX ASPHALT SURFACE REMOVAL, 2"
- ⑦ PROPOSED BITUMINOUS MATERIALS TACK COAT
- ⑧ PROPOSED LONGITUDINAL JOINT SEALANT

MODEL: Typical Sections-1 [Sheet]
FILE NAME: H:\P\223082 - Erwin Plegge Resurfacing Ph. 1 & 2\CADD\Microstation\CADD Sheets\08223082-shh-typical.dgn



USER NAME = nick.moore	DESIGNED -	REVISED -
	DRAWN -	REVISED -
	CHECKED -	REVISED -
DATE -	DATE -	REVISED -

DESIGNED -	REVISED -
DRAWN -	REVISED -
CHECKED -	REVISED -
DATE -	REVISED -

DESIGNED -	REVISED -
DRAWN -	REVISED -
CHECKED -	REVISED -
DATE -	REVISED -

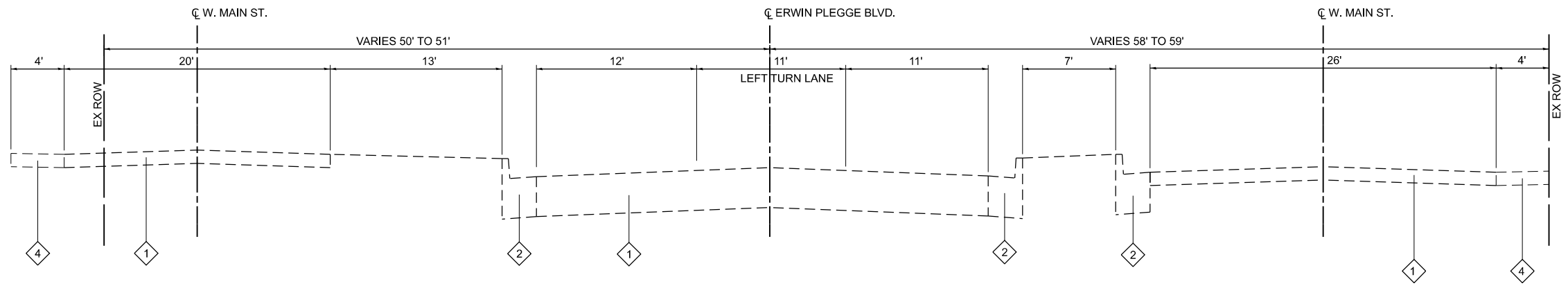
**STATE OF ILLINOIS
DEPARTMENT OF TRANSPORTATION**

TYPICAL SECTIONS

SCALE: NTS SHEET 1 OF 4 SHEETS STA. TO STA.

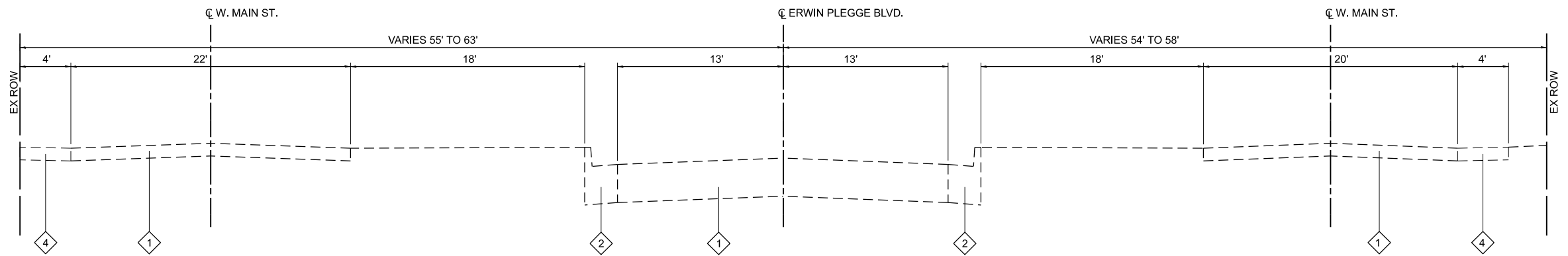
F.A.U. RTE.	SECTION	COUNTY	TOTAL SHEETS	SHEET NO.
8960	*	MADISON	19	5
CONTRACT NO. 97847				

ILLINOIS FED. AID PROJECT
*22-00033-01-RS & 23-00033-02-RS



EXISTING ERWIN PLEGGE BLVD.

STA. 65+60 TO STA. 68+51



EXISTING ERWIN PLEGGE BLVD.

STA. 58+35 TO STA. 65+60

TYPICAL SECTION LEGEND

- ① EXISTING HMA PAVEMENT
- ② EXISTING B-6.24 CONCRETE CURB AND GUTTER
- ③ EXISTING HMA MULTI-USE PATH
- ④ EXISTING PCC SIDEWALK
- ⑤ PROPOSED HOT-MIX ASPHALT, IL-9.5, MIX "C", N70, 2"
- ⑥ PROPOSED HOT-MIX ASPHALT SURFACE REMOVAL, 2"
- ⑦ PROPOSED BITUMINOUS MATERIALS TACK COAT
- ⑧ PROPOSED LONGITUDINAL JOINT SEALANT

MODEL: Typical Sections2 (Sheet)
FILE NAME: H:\1223082 - Erwin Plegge Resurfacing Ph. 1 & 2\CADD\Microstation\CADD Sheets\0823082-shh-typical.dgn



USER NAME = nick.moore	DESIGNED -	REVISED -
	DRAWN -	REVISED -
	CHECKED -	REVISED -
DATE -	DATE -	REVISED -
PLOT DATE = 9/30/2024		

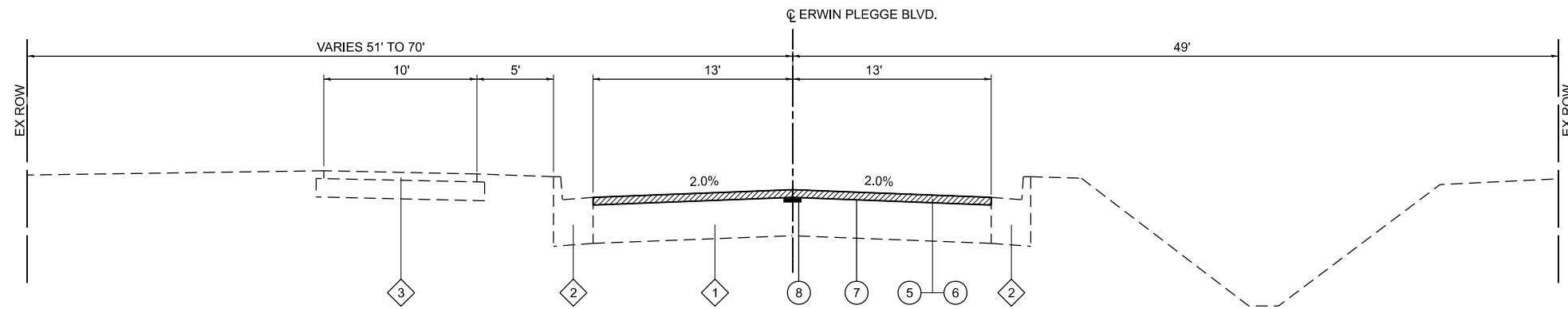
**STATE OF ILLINOIS
DEPARTMENT OF TRANSPORTATION**

TYPICAL SECTIONS

SCALE: NTS SHEET 2 OF 4 SHEETS STA. TO STA.

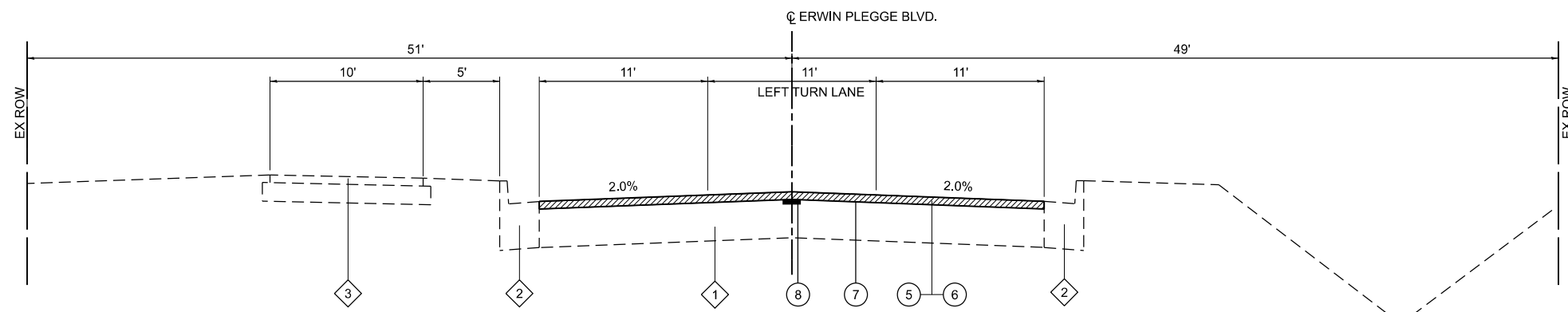
F.A.U. RTE.	SECTION	COUNTY	TOTAL SHEETS	SHEET NO.
8960	*	MADISON	19	6
CONTRACT NO. 97847				

ILLINOIS FED. AID PROJECT
*22-00033-01-RS & 23-00033-02-RS



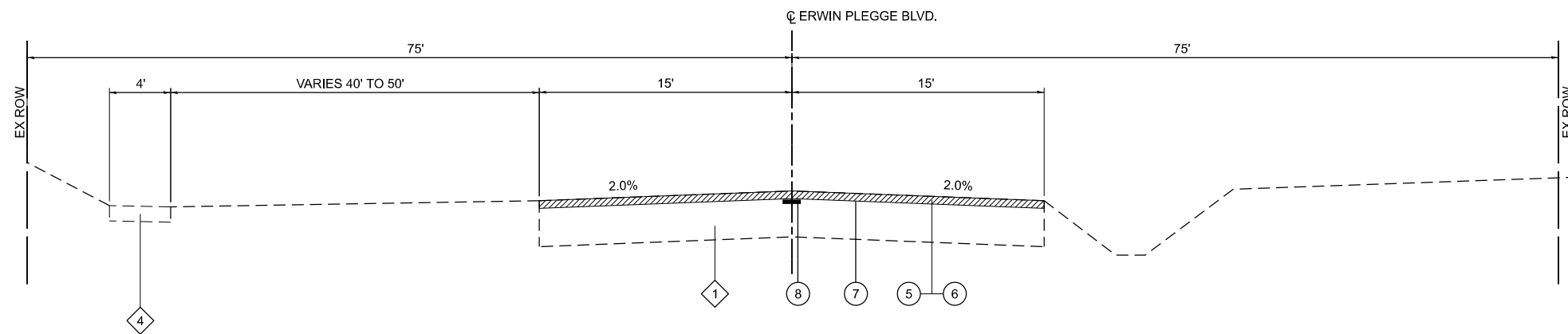
PROPOSED ERWIN PLEGGE BLVD.

STA. 20+00 TO STA. 58+35



PROPOSED ERWIN PLEGGE BLVD.

STA. 10+00 TO STA. 20+00



EXISTING ERWIN PLEGGE BLVD.

STA. 9+31 TO STA. 10+00

TYPICAL SECTION LEGEND

- | | | | |
|---|------------------------------------------|---|----------------------------------------------------|
| ① | EXISTING HMA PAVEMENT | ⑤ | PROPOSED HOT-MIX ASPHALT, IL-9.5, MIX "C", N70, 2" |
| ② | EXISTING B-6.24 CONCRETE CURB AND GUTTER | ⑥ | PROPOSED HOT-MIX ASPHALT SURFACE REMOVAL, 2" |
| ③ | EXISTING HMA MULTI-USE PATH | ⑦ | PROPOSED BITUMINOUS MATERIALS TACK COAT |
| ④ | EXISTING PCC SIDEWALK | ⑧ | PROPOSED LONGITUDINAL JOINT SEALANT |

MODEL: Typical Sections-3 (Sheet)
FILE NAME: H:\P\223082 - Erwin Plegge Resurfacing Ph. 1 & 2\CADD\Microstation\CADD Sheets\08223082-shh-typical.dgn



USER NAME = nick.moore
DESIGNED -
DRAWN -
CHECKED -
DATE -
PLOT DATE = 9/30/2024

DESIGNED -
DRAWN -
CHECKED -
DATE -
REVISED -
REVISED -
REVISED -
REVISED -

DESIGNED -
DRAWN -
CHECKED -
DATE -
REVISED -
REVISED -
REVISED -
REVISED -

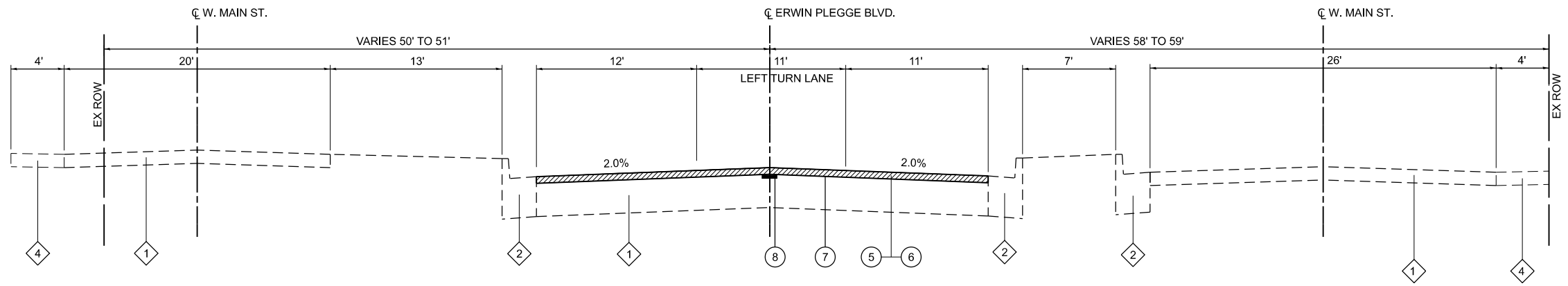
**STATE OF ILLINOIS
DEPARTMENT OF TRANSPORTATION**

TYPICAL SECTIONS

SCALE: NTS SHEET 3 OF 4 SHEETS STA. TO STA.

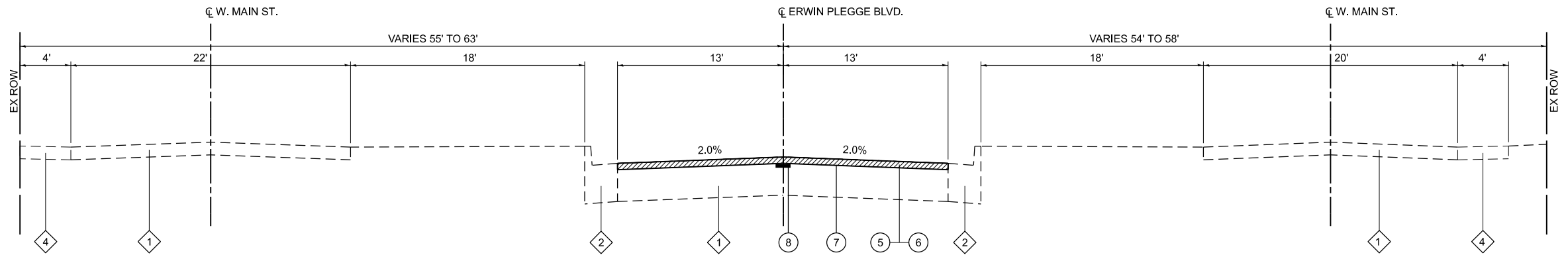
F.A.U. RTE.	SECTION	COUNTY	TOTAL SHEETS	SHEET NO.
8960	*	MADISON	19	7
CONTRACT NO. 97847				

ILLINOIS FED. AID PROJECT
*22-00033-01-RS & 23-00033-02-RS



PROPOSED ERWIN PLEGG BLVD.

STA. 65+60 TO STA. 68+51



PROPOSED ERWIN PLEGG BLVD.

STA. 58+35 TO STA. 65+60

TYPICAL SECTION LEGEND

- ① EXISTING HMA PAVEMENT
- ② EXISTING B-6.24 CONCRETE CURB AND GUTTER
- ③ EXISTING HMA MULTI-USE PATH
- ④ EXISTING PCC SIDEWALK
- ⑤ PROPOSED HOT-MIX ASPHALT, IL-9.5, MIX "C", N70, 2"
- ⑥ PROPOSED HOT-MIX ASPHALT SURFACE REMOVAL, 2"
- ⑦ PROPOSED BITUMINOUS MATERIALS TACK COAT
- ⑧ PROPOSED LONGITUDINAL JOINT SEALANT

MODEL: Typical Sections-4 [Sheet]
FILE NAME: H:\1223082 - Erwin Plegge Resurfacing Ph. 1 & 2\CADD\Microstation\CADD Sheets\0823082-shh-typical.dgn



USER NAME = nick.moore	DESIGNED -	REVISED -
	DRAWN -	REVISED -
	CHECKED -	REVISED -
DATE -		REVISED -
PLOT DATE = 9/30/2024		

**STATE OF ILLINOIS
DEPARTMENT OF TRANSPORTATION**

TYPICAL SECTIONS

SCALE: NTS SHEET 4 OF 4 SHEETS STA. TO STA.

F.A.U. RTE.	SECTION	COUNTY	TOTAL SHEETS	SHEET NO.
8960	*	MADISON	19	8
CONTRACT NO. 97847				

CURB & GUTTER

STATION	STATION	OFFSET	AGG BASE CSE B 4 (SQ YD)	COMB CURB GUTTER REM (FOOT)	COMB CC&G TB6.24 (FOOT)	COMB CC&G TM6.06 (FOOT)	COMB CC&G TM6.24 (FOOT)	COMB CC&G TM6.24 VWGF (FOOT)	PAINT CURB (FOOT)
9+45	9+77	RT	16	47	47				
10+12	10+48	RT		95					
10+12	10+48	RT							60
10+16	10+17	RT	16					30	
10+17	10+48	RT	13				37		
10+18	10+48	RT	9			48			
10+33	10+54	RT	12	36	36				
44+87	45+47	RT	24	60	60				
53+07	53+57	LT	17	50	50				
54+62	55+07	LT	15	45	45				
TOTAL			122	333	237	48	37	30	60

SIDEWALK

STATION	STATION	OFFSET	PC CONC SIDEWALK 4 (SQ FT)	DETECTABLE WARNINGS (SQ FT)
9+60	9+74	RT	153	
9+61	9+73	RT		44
10+17	10+35	RT	245	
10+17	10+35	RT		65
10+39	10+58	RT	169	
10+42	10+50	RT		20
TOTAL			567	129

DETECTOR LOOPS

LOCATION	LOOP DIMENSION	DET LOOP REPL (NOTES 1-4) (FOOT)
ERWIN PLEGGÉ BLVD & OLD BETHALTO RD INT.		
NORTH LEG (RIGHT/THRU)	6' X 50'	166
NORTH LEG (LEFT)	6' X 50'	187
EAST LEG (RIGHT/THRU)	6' X 50'	164
EAST LEG (LEFT)	6' X 50'	178
SOUTH LEG (RIGHT)	6' X 70'	230
SOUTH LEG (LEFT/THRU)	6' X 50'	166
WEST LEG	6' X 50'	165
TOTAL		1,256

DETECTOR LOOP NOTES:

1. THE LOCATION OF ALL DETECTOR LOOPS SHALL BE APPROVED BY THE ENGINEER BEFORE ANY SLOTS ARE SAWED IN THE PAVEMENT. DETECTOR LOOPS SHALL BE CENTERED IN RESPECTIVE LANE.
2. DETECTOR LOOP LEAD-IN SPLICES SHALL BE MADE IN A HANDHOLE. CONDUCTORS SHALL BE SPLICED IN A RIGID MOLD. ROSIN CORE SOLDER SHALL BE USED.
3. THE NUMBER OF TURNS FOR THE INDUCTIVE LOOP INSTALLATION SHALL BE AS FOLLOWS: ALL QUADRAPOLE LOOPS SHALL BE 3-6-3.
4. THE DETECTOR LOOPS SHALL BE INSTALLED PRIOR TO THE SURFACE

PAVEMENT

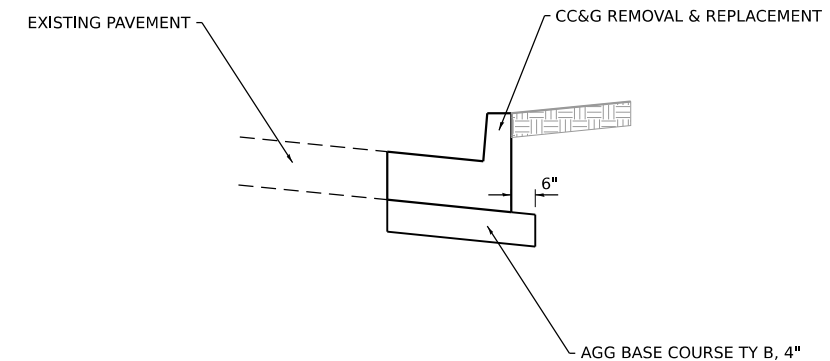
STATION	STATION	OFFSET	AGG BASE CSE B 12 (SQ YD)	BIT MATLS TACK CT (NOTE 1) (POUND)	HMA SURF REM 2 (SQ YD)	LONG JOINT SEALANT (FOOT)	TEMPORARY RAMP (SQ YD)	HMA SC IL- 9.5 C N70 (NOTES 1 & 2) (TON)	CL D PATCH T2 8 (SQ YD)	CONC MEDIAN SURF 4 (SQ FT)	CONC MEDIAN SURF REM (SQ FT)	PART DEP REM T1 2 (SQ YD)
9+31	9+38	LT/RT					21					
9+31	68+54	LT/RT		8,453	18,700	5,921		2,104				
9+85	10+28	LT										84
9+96	9+96	RT					28					
10+07	10+09	LT					26					
10+12	10+48	RT							156	454		
10+18	10+36	RT					14					
14+56	15+52	RT					71					
28+20	29+05	RT					63					
29+35	30+29	LT					70					
35+61	36+50	RT					65					
35+67	36+60	LT					68					
50+83	50+93	LT	14						14			
57+61	58+55	RT					70					
64+75	65+72	LT					72					
64+78	65+75	RT					72					
68+44	68+51	RT					64					
TOTAL			14	8,453	18,700	5,921	704	2,104	14	156	454	84

PAVEMENT NOTES:

1. APPLICATION RATES USED FOR QUANTITY ESTIMATES ARE AS FOLLOWS:
HOT-MIX ASPHALT: 112 LBS/SY/INCH THICKNESS
BITUMINOUS MATERIALS TACK COAT: 0.05 LBS/SQ FT
2. THE PROPOSED SURFACE COURSE SHALL BE 2 IN. THICK.

DRAINAGE

STATION	OFFSET	MAN TA 7 DIA T3F&G (EACH)	REMOV INLETS (EACH)
9+58	RT		1
9+59	RT	1	
TOTAL		1	1



MODEL: Schedule-1 (Sheet)
FILE NAME: H:\P\223082 - Erwin Plegge Resurfacing Ph. 1 & 2\CADD\Microstation\CADD Sheets\08223082-sh-schedule.dgn



USER NAME = nick.moore
PLOT DATE = 10/2/2024

DESIGNED -	REVISIONS -
DRAWN -	REVISIONS -
CHECKED -	REVISIONS -
DATE -	REVISIONS -

**STATE OF ILLINOIS
DEPARTMENT OF TRANSPORTATION**

SCHEDULES

SCALE: SHEET 1 OF 2 SHEETS STA. TO STA.

F.A.U. RTE.	SECTION	COUNTY	TOTAL SHEETS	SHEET NO.
8960	*	MADISON	19	9
CONTRACT NO. 97847				

ILLINOIS FED. AID PROJECT
*22-00033-01-RS & 23-00033-02-RS

PAVEMENT MARKING

STATION	STATION	OFFSET	COMMENT	COLOR	SHORT TERM PAVT MRKING (NOTE 2) (FOOT)	SHORT TRM PAVT MK REM (NOTE 3) (SQ FT)	THPL PVT MK LTR & SYM (NOTE 1) (SQ FT)	THPL PVT MK LINE 4 (NOTE 1) (FOOT)	THPL PVT MK LINE 8 (NOTE 1) (FOOT)	THPL PVT MK LINE 12 (NOTE 1) (FOOT)	THPL PVT MK LINE 24 (NOTE 1) (FOOT)
9+31	9+57	LT/RT	DOUBLE SOLID LINE	YELLOW	18	6		204			
9+31	9+57	LT/RT	SOLID DIAGONAL LINE	YELLOW						10	
9+51	9+53	RT	STOP BAR	WHITE							13
9+61	9+75	LT/RT	10' CROSSWALK	WHITE							100
9+76	10+15	RT	10' CROSSWALK	WHITE							100
9+82	10+31	LT	10' CROSSWALK	WHITE							120
9+86	10+04	LT	STOP BAR	WHITE							17
9+93	10+00	RT	DOUBLE SOLID LINE	YELLOW	46	15		498			
9+93	10+00	RT	SOLID DIAGONAL LINE	YELLOW						82	
9+98	10+13	RT	STOP BAR	WHITE							17
10+04	10+10	LT	DOUBLE SOLID LINE	YELLOW	8	3		82			
10+04	10+10	LT	SOLID DIAGONAL LINE	YELLOW						6	
10+12	10+56	RT	SOLID LINE	WHITE				95			
10+26	10+41	LT/RT	10' CROSSWALK	WHITE							110
10+28	10+38	RT	STOP BAR	WHITE							16
10+28	10+47	RT	10' CROSSWALK	WHITE							50
10+54	11+61	RT	DOUBLE SOLID LINE	YELLOW	18	6		198			
10+54	11+61	RT	LANE LINE	WHITE	18	6		97			
10+54	10+56	LT/RT	STOP BAR	WHITE							23
10+82		LT	LEFT/THRU ARROW	WHITE				15			
10+82		LT/RT	LEFT ARROW	WHITE				7			
11+12		LT/RT	ONLY	WHITE				12			
11+29		LT/RT	LEFT ARROW	WHITE				7			
11+59		LT/RT	ONLY	WHITE				12			
11+61	14+78	LT/RT	DOUBLE SOLID LINE	YELLOW	116	38		1,280			
11+61	14+78	LT/RT	SOLID DIAGONAL LINE	YELLOW						276	
15+56	17+10	LT	LANE LINE	WHITE	28	9		155			
15+56	17+10	RT	DOUBLE SOLID LINE	YELLOW	28	9		310			
16+18		LT/RT	LEFT ARROW	WHITE				7			
17+10		LT/RT	LEFT ARROW	WHITE				7			
17+10	20+18	LT/RT	DOUBLE SOLID LINE	YELLOW	112	37		1,234			
17+10	20+18	LT/RT	SOLID DIAGONAL LINE	YELLOW						275	
20+18	65+61	CL	SKIP DASH	YELLOW	824	272		1,134			
35+67	35+73	LT/RT	6' CROSSWALK	WHITE							48
65+61	68+26	LT	DBL SOLID LINE	YELLOW	48	16		530			
66+58		LT/RT	ONLY (X2)	WHITE				24			
66+59	68+26	RT	LANE LINE	WHITE	30	10		185			
66+89		LT/RT	LEFT ARROW	WHITE				7			
66+89		RT	RIGHT ARROW	WHITE				7			
67+08		LT/RT	ONLY	WHITE				24			
67+39		LT/RT	LEFT ARROW	WHITE				7			
67+39		RT	RIGHT ARROW	WHITE				7			
67+59		LT/RT	ONLY (X2)	WHITE				24			
67+89		LT/RT	LEFT ARROW	WHITE				7			
67+89		RT	RIGHT ARROW	WHITE				7			
68+16	68+26	LT/RT	STOP BAR	WHITE							31
68+22	68+56	LT/RT	10' CROSSWALK	WHITE							140
TOTAL					1,294	427	181	5,887	95	649	785

- PAVEMENT MARKING NOTES:
- SEE HIGHWAY STANDARD 780001 FOR PAVEMENT MARKING DETAILS.
 - ASSUMES TWO APPLICATIONS (MILLED AND FINAL SURFACE).
 - SHORT TERM PAVEMENT MARKING REMOVAL APPLIES ONLY TO THE PAVEMENT MARKINGS INSTALLED ON THE PROPOSED HMA SURFACE.

SIGN

STATION	OFFSET	MUTCD TYPE	DESCRIPTION	SIZE (IN. X IN.)	SIGN PANEL T1 (SQ FT)	TELES STL SIN SUPPORT (NOTE 1) (FOOT)	REMOV SIN PAN ASSY TA (EACH)	REM RE-ERECT EX SIGN (EACH)
9+61	LT	D3-1	OLD BETHALTO RD	66 X 8	4.0	13	1	
9+61	LT	D3-1	W. OLD BETHALTO RD	66 X 8	4.0			
10+54	RT						1	
10+58	RT	D3-1	ERWIN PLEGGE	48 X 8	3.0	13	1	
10+58	RT	D3-1	N BELLWOOD	42 X 8	2.0			
12+97	RT	R2-1	SPEED LIMIT	24 X 30	5.0	17	1	
	RT	R8-3a	NO PARKING	24 X 30	5.0			
15+25	RT	R1-1	STOP	30 X 30	6.0	15	1	
15+57	LT	W3-3	SIGNAL AHEAD	30 X 30	6.0	17	1	
	LT	R8-3a	NO PARKING	24 X 30	5.0			
27+56	LT	R2-1	SPEED LIMIT	24 X 30	5.0	17	1	
	LT	R8-3a	NO PARKING	24 X 30	5.0			
32+98	LT	R2-1	SPEED LIMIT	24 X 30	5.0	17	1	
	LT	R8-3a	NO PARKING	24 X 30	5.0			
33+00	RT						1	
33+67	RT	R2-1	SPEED LIMIT	24 X 30	5.0	17	0	
	RT	R8-3a	NO PARKING	24 X 30	5.0			
36+92	LT						1	
42+90	RT	R2-1	SPEED LIMIT	24 X 30	5.0	17	1	
	RT	R8-3a	NO PARKING	24 X 30	5.0			
42+89	LT	R2-1	SPEED LIMIT	24 X 30	5.0	17	1	
	LT	R8-3a	NO PARKING	24 X 30	5.0			
50+59	LT	R2-1	SPEED LIMIT	24 X 30	5.0	17	1	
	LT	R8-3a	NO PARKING	24 X 30	5.0			
51+79	RT	W3-5	REDUCE SPEED	36 X 36	9.0	18	1	
	RT	R8-3a	NO PARKING	24 X 30	5.0			
55+92	RT	R2-1	SPEED LIMIT	24 X 30	5.0	17	1	
	RT	R8-3a	NO PARKING	24 X 30	5.0			
56+16	LT	R2-1	SPEED LIMIT	24 X 30	5.0	17	1	
	LT	R8-3a	NO PARKING	24 X 30	5.0			
57+74	RT	D3-1	ERWIN PLEGGE	48 X 8	3.0	13	1	
	RT	D3-1	S WALNUT ST	42 X 8	2.0			
59+06	RT	R2-1	SPEED LIMIT	24 X 30	5.0	17	1	
	RT	R8-3a	NO PARKING	24 X 30	5.0			
59+06	LT	R2-1	SPEED LIMIT	24 X 30	5.0	17	1	
	LT	R8-3a	NO PARKING	24 X 30	5.0			
63+18	LT	R2-1	SPEED LIMIT	24 X 30	5.0	17	1	
	LT	R8-3a	NO PARKING	24 X 30	5.0			
64+58	RT		MCS BUS STOP			12		1
65+56	LT	D3-1	ERWIN PLEGGE	48 X 8	3.0	13	1	
	LT	D3-1	OAK	18 X 8	1.0			
65+73	LT		MCT BUS STOP			12		1
67+60	LT	R2-1	SPEED LIMIT	24 X 30	5.0	17	1	
		R8-3a	NO PARKING	24 X 30	5.0			
68+42	LT	D3-1	ERWIN PLEGGE	48 X 8	3.0	13	1	
	LT	D3-1	PRAIRIE ST	36 X 8	2.0			
68+08	RT	R1-1	STOP	30 X 30	6.0	16	1	
	RT	SP-1	STOP FOR PED. IN X WALK	18 X 24	3.0			
TOTAL					197.0	376	24	2

SIGN NOTES:

MODEL: Schedule-2 (Sheet)
 FILE NAME: H:\1223082 - Erwin Plegge Resurfacing Ph. 1 & 2\CADD\Microstation\CADD_Sheets\08223082-sh-schedule.dgn



USER NAME = nick.moore	DESIGNED -	REVISED -
	DRAWN -	REVISED -
	CHECKED -	REVISED -
PLOT DATE = 9/30/2024	DATE -	REVISED -

STATE OF ILLINOIS
 DEPARTMENT OF TRANSPORTATION

SCHEDULES

SCALE: SHEET 2 OF 2 SHEETS STA. TO STA.

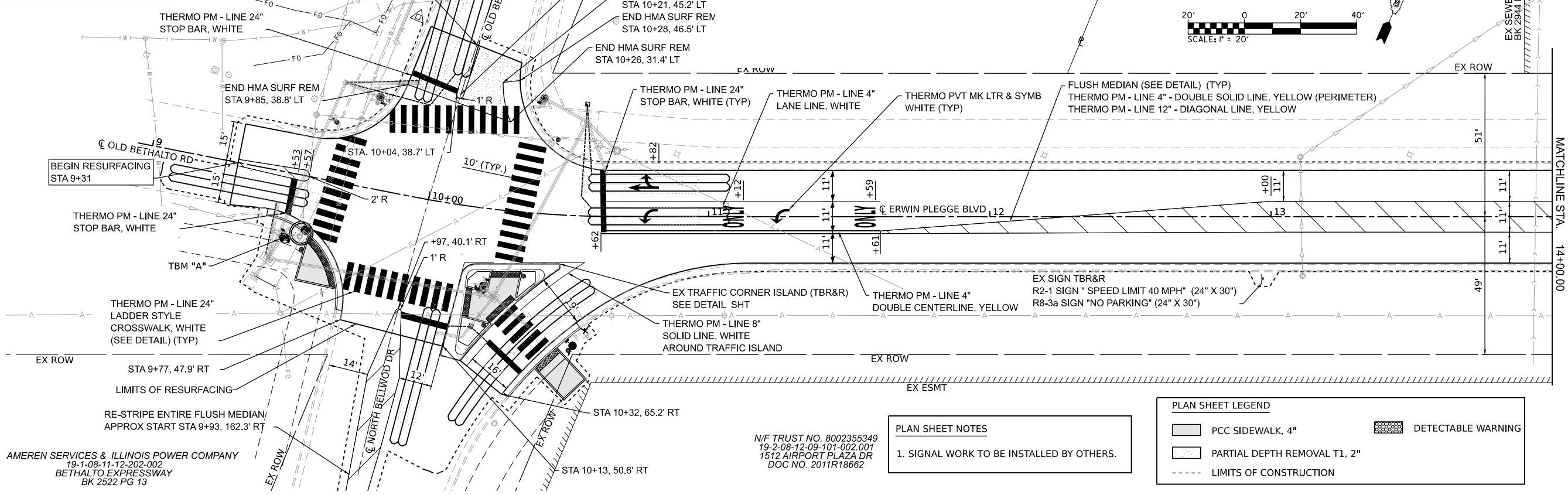
F.A.U. RTE. 8960	SECTION *	COUNTY MADISON	TOTAL SHEETS 19	SHEET NO. 10
CONTRACT NO. 97847				

ILLINOIS FED. AID PROJECT *22-00033-01-RS & 23-00033-02-RS

TBM "A" - CUT "SQUARE"
ON TRAFFIC SIGNAL BASE
STA. 9+52.38, 23.27' RT
ELEV 518.23

N/F FRANKLIN DAVID & PAMELA SUE DREW
19-2-08-12-05-101-015
101 N. OLD BETHALTO RD.
DOC NO. 2018R04245

N/F DONALD W. VIRGIN
19-2-08-12-05-101-016
100 S. KINGDOM ST.
DOC NO. 2020R48019



AMEREN SERVICES & ILLINOIS POWER COMPANY
19-1-08-11-12-202-002
BETHALTO EXPRESSWAY
BK 2522 PG 13

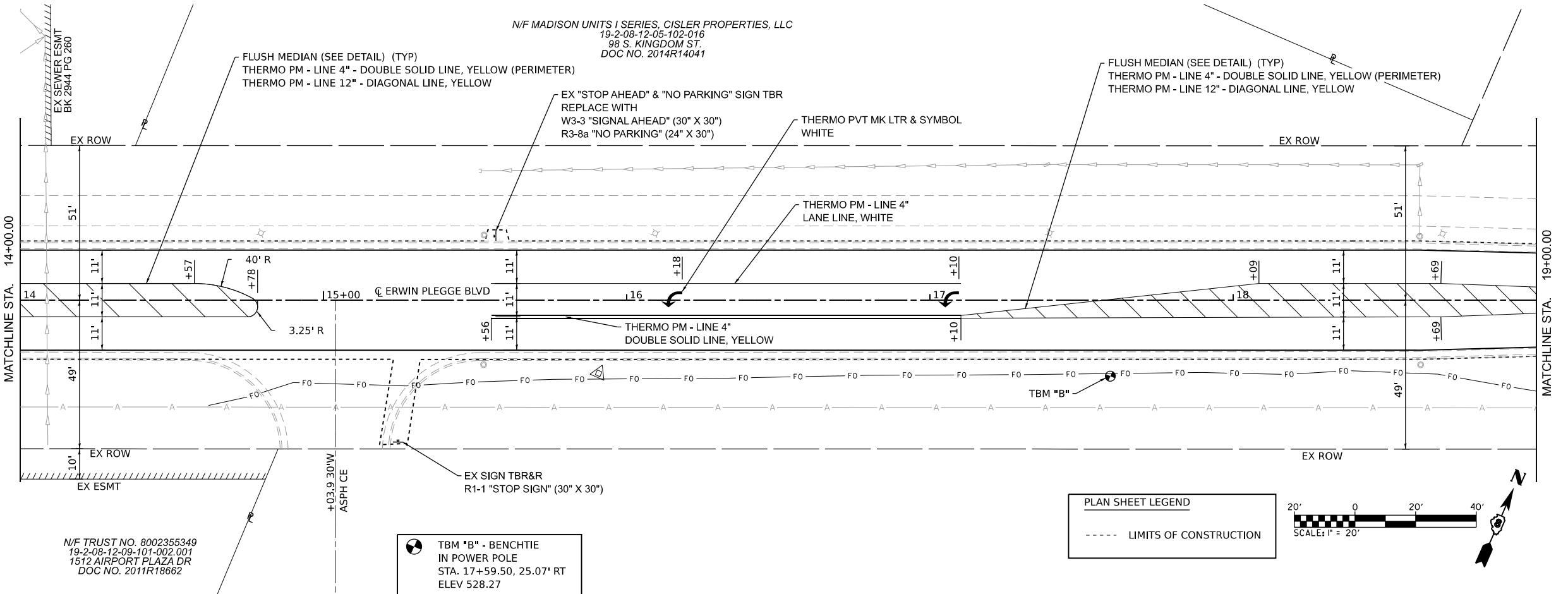
N/F TRUST NO. 8002355349
19-2-08-12-09-101-002-001
1512 AIRPORT PLAZA DR
DOC NO. 2011R18662

PLAN SHEET NOTES
1. SIGNAL WORK TO BE INSTALLED BY OTHERS.

PLAN SHEET LEGEND

- PCC SIDEWALK, 4"
- PARTIAL DEPTH REMOVAL T1, 2"
- LIMITS OF CONSTRUCTION
- DETECTABLE WARNING

N/F MADISON UNITS I SERIES, CISLER PROPERTIES, LLC
19-2-08-12-05-102-016
98 S. KINGDOM ST.
DOC NO. 2014R14041

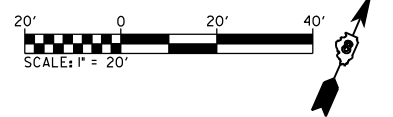


N/F TRUST NO. 8002355349
19-2-08-12-09-101-002-001
1512 AIRPORT PLAZA DR
DOC NO. 2011R18662

TBM "B" - BENCHTIE
IN POWER POLE
STA. 17+59.50, 25.07' RT
ELEV 528.27

PLAN SHEET LEGEND

- LIMITS OF CONSTRUCTION



MODEL: Sheet1
FILE NAME: H:\P222082 - Enrich - Plegge - Resurfacing Ph. 1 & 2\CADD\Microstation\CADD_Sheets\08223082-sch-plan.dgn



USER NAME = nick.moore	DESIGNED -	REVISED -
PLOT SCALE = 0.166666' / in.	DRAWN -	REVISED -
PLOT DATE = 10/2/2024	CHECKED -	REVISED -
	DATE -	REVISED -

**STATE OF ILLINOIS
DEPARTMENT OF TRANSPORTATION**

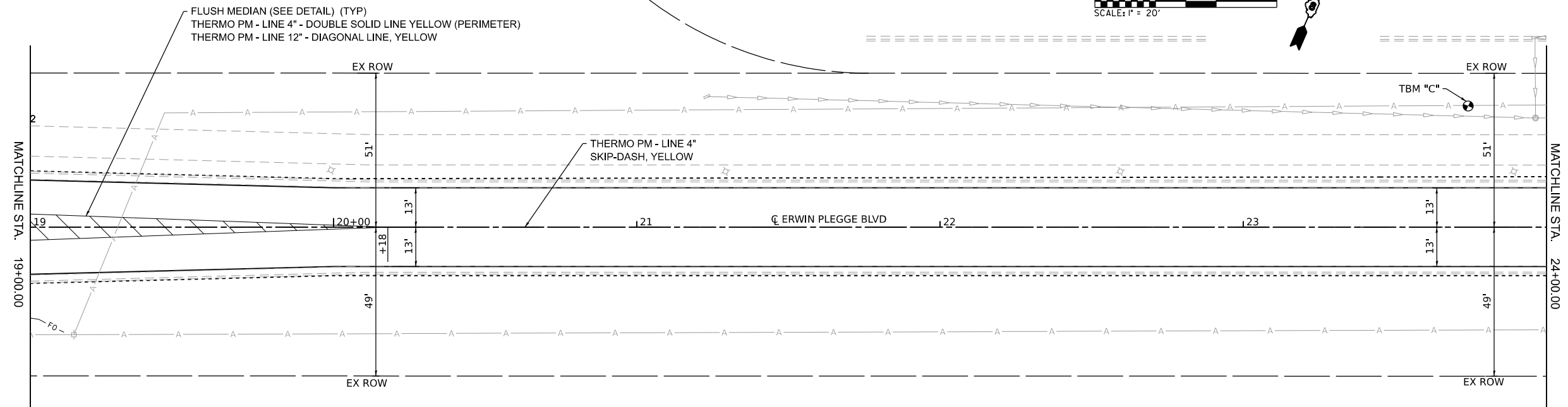
PLAN SHEETS

SCALE: 1" = 20'	SHEET 1	OF 6 SHEETS	STA. 9+31	TO STA. 19+00
-----------------	---------	-------------	-----------	---------------

F.A.U. RTE.	SECTION	COUNTY	TOTAL SHEETS	SHEET NO.
8960	*	MADISON	19	11
CONTRACT NO. 97847				

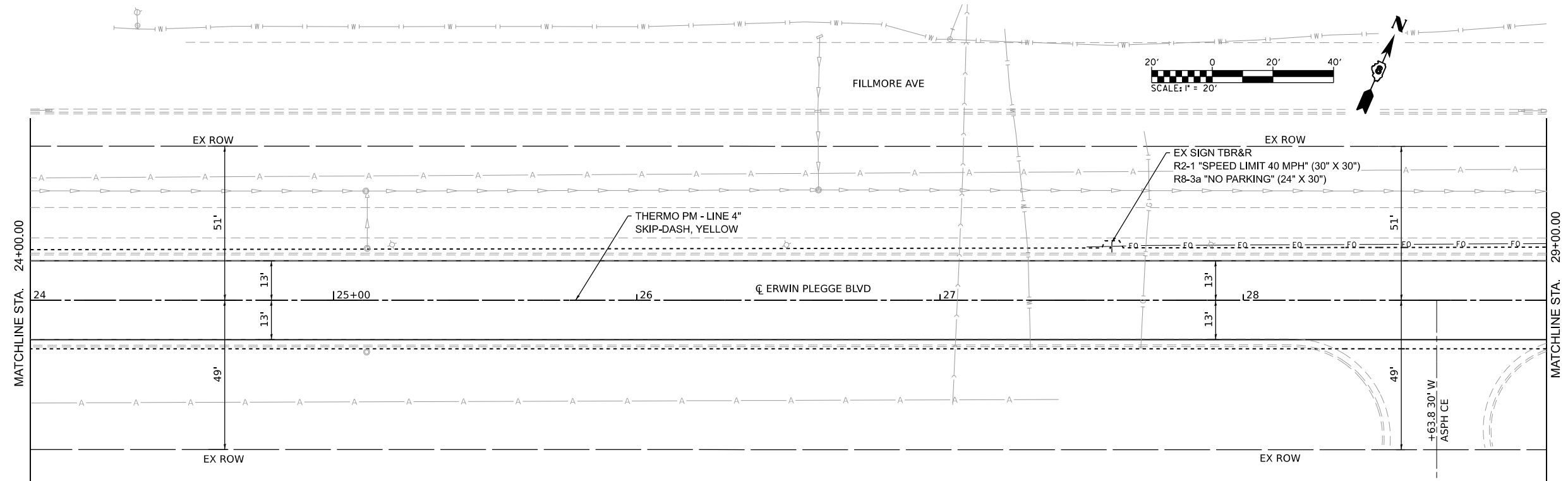
*22-00033-01-R5 & 23-00033-02-R5

N/F MARK ALLEN JEFFREY & JILL N. MARONIE
 19-2-08-12-05-103-012
 101 NELSON DR.
 BK 4501 PG 1631



TBM "C" - BENCHTIE
 IN POWER POLE
 STA. 23+74.15, 40.00' LT
 ELEV 528.86

PLAN SHEET LEGEND
 - - - - - LIMITS OF CONSTRUCTION



PLAN SHEET LEGEND
 - - - - - LIMITS OF CONSTRUCTION

MODEL: Sheet 2
 FILE NAME: H:\P222082 - Erwin Plegge Resurfacing Ph. 1 & 2\CADD\Microstation\CADD_Sheets\08223082-schplan.dgn



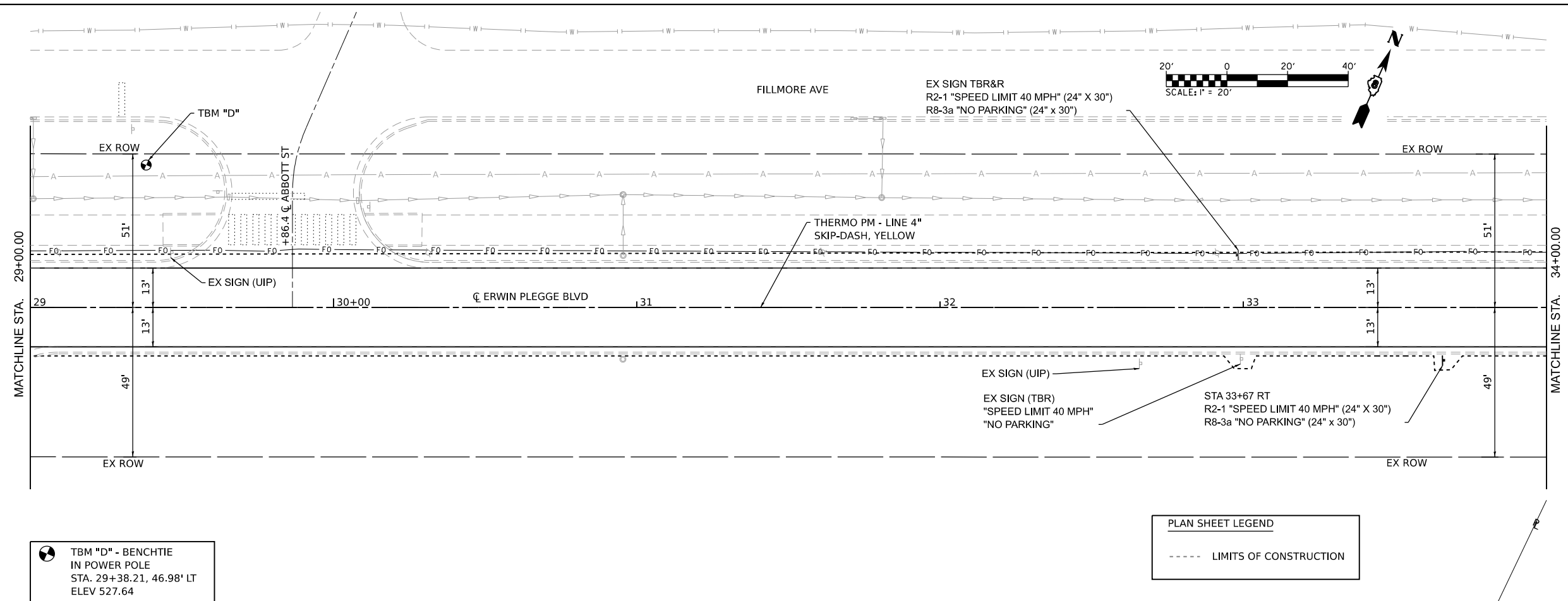
USER NAME = nick.moore	DESIGNED -	REVISED -
PLOT SCALE = 0.166666' / in.	DRAWN -	REVISED -
PLOT DATE = 10/2/2024	CHECKED -	REVISED -
	DATE -	REVISED -

STATE OF ILLINOIS
 DEPARTMENT OF TRANSPORTATION

PLAN SHEETS			
SCALE: 1" = 20'	SHEET 2	OF 12 SHEETS	STA. 19+00 TO STA. 29+00

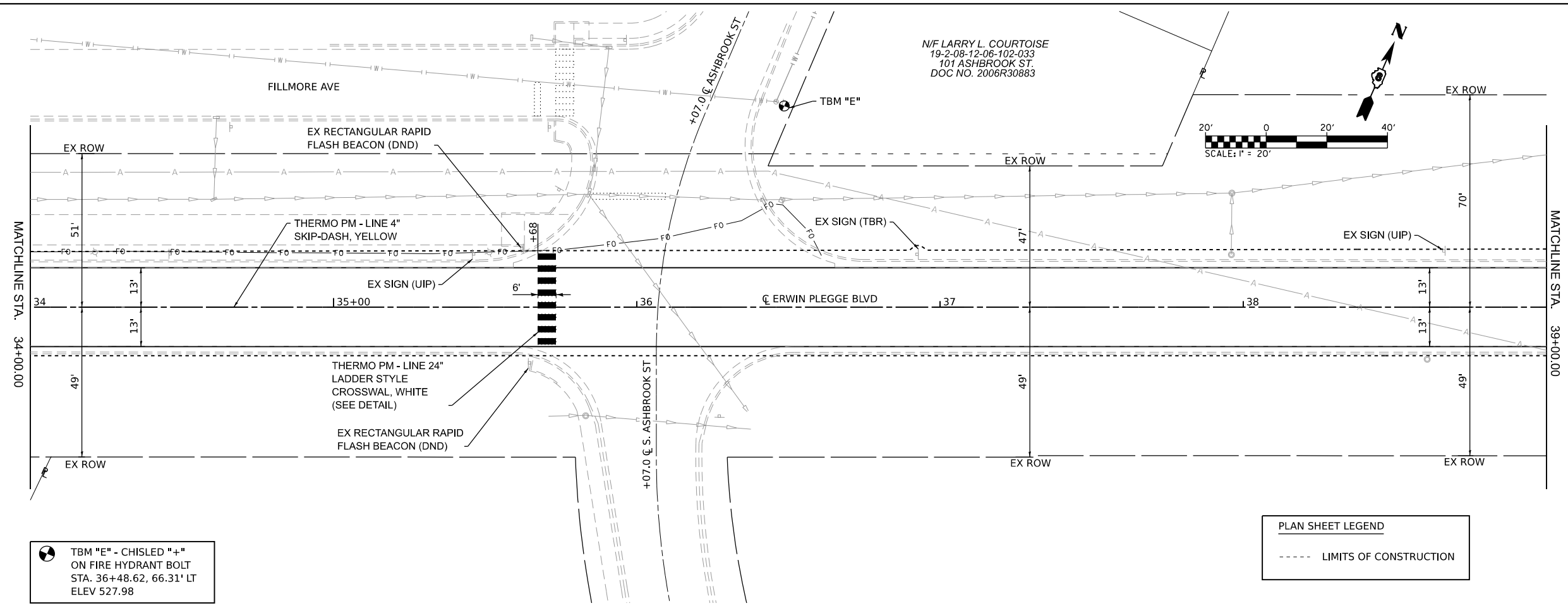
F.A.U. RTE.	SECTION	COUNTY	TOTAL SHEETS	SHEET NO.
8960	*	MADISON	19	12
CONTRACT NO. 97847				

ILLINOIS FED. AID PROJECT
 *22-00033-01-RS & 23-00033-02-RS



TBM "D" - BENCHTIE
 IN POWER POLE
 STA. 29+38.21, 46.98' LT
 ELEV 527.64

PLAN SHEET LEGEND
 - - - - - LIMITS OF CONSTRUCTION



TBM "E" - CHISLED "+"
 ON FIRE HYDRANT BOLT
 STA. 36+48.62, 66.31' LT
 ELEV 527.98

PLAN SHEET LEGEND
 - - - - - LIMITS OF CONSTRUCTION

MODEL: Sheet 3
 FILE NAME: H:\P222082 - Erwin Plegge Resurfacing Ph. 1 & 2\CADD\Microstation\CADD_Sheets\08223082-sch-plan.dgn



USER NAME = nick.moore	DESIGNED -	REVISED -
PLOT SCALE = 0.167' / in.	DRAWN -	REVISED -
PLOT DATE = 10/2/2024	CHECKED -	REVISED -
	DATE -	REVISED -

**STATE OF ILLINOIS
 DEPARTMENT OF TRANSPORTATION**

PLAN SHEETS		
SCALE: 1"=20'	SHEET 3	OF 6 SHEETS
STA. 29+00	TO STA. 39+00	

F.A.U. RTE.	SECTION	COUNTY	TOTAL SHEETS	SHEET NO.
8960	*	MADISON	19	13
CONTRACT NO. 97847				
ILLINOIS FED. AID PROJECT				

*22-00033-01-R5 & 23-00033-02-R5

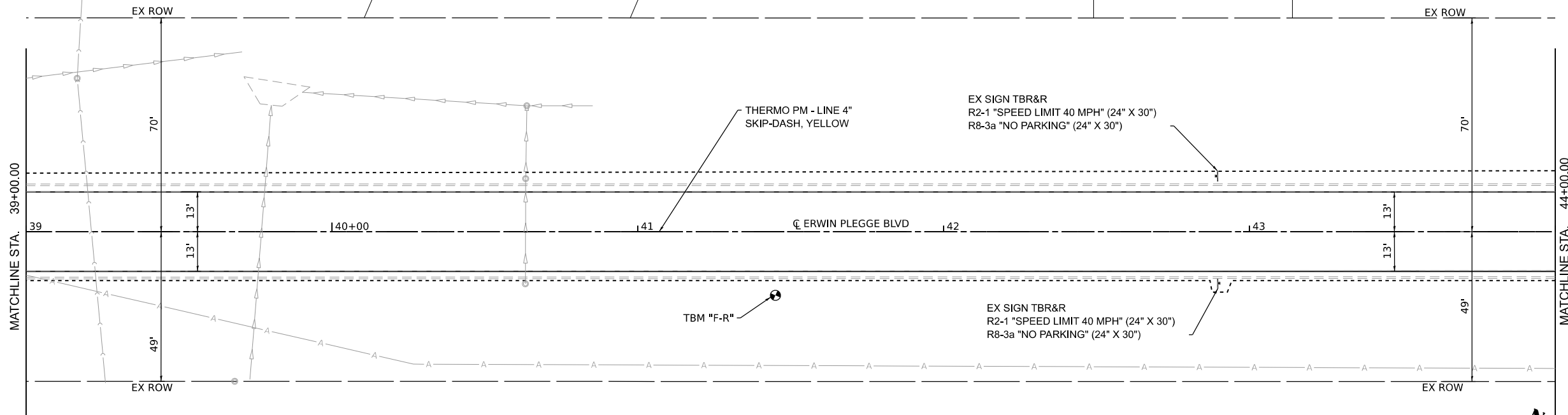
N/F MARY ANN WILHITE
19-2-08-12-06-102-034
761 SECOND ST.
DOC NO. 2006R58222

N/F WILLIAM R. SANDERS
19-2-08-12-06-102-035
755 SECOND ST.
BK 3918 PG 1272

N/F DARREL F. GAUDIO
19-2-08-12-07-201-001
751 SECOND ST.
DOC NO. 2006R39049

N/F STEVEN R. & LAURA E. STOREY
19-2-08-12-07-201-002
747 SECOND ST.
DOC NO. 2010R47934

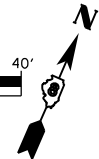
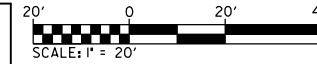
N/F RONNIE R. & PAULINE MCCANN
19-2-08-12-07-201-003
745 SECOND ST.
DOC NO. 2014R26744



TBM "F-R" - BENCHTIE
IN POWER POLE
STA. 41+45.01, 20.83' RT
ELEV 526.74

PLAN SHEET LEGEND

----- LIMITS OF CONSTRUCTION



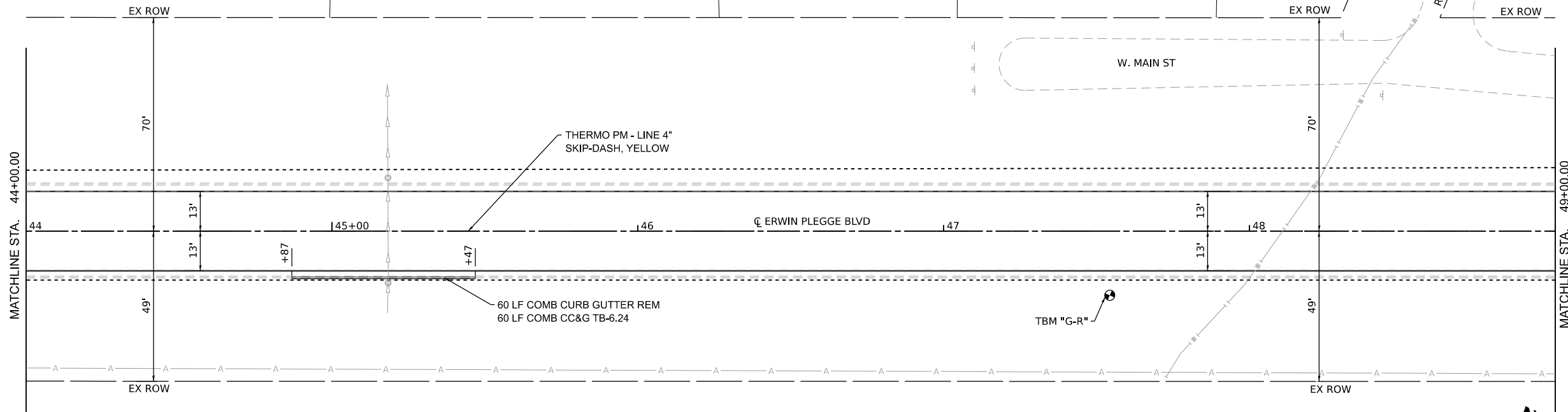
N/F RONNIE R. & PAULINE MCCANN
19-2-08-12-07-201-003
745 SECOND ST.
DOC NO. 2014R26744

N/F LETO L. & REBECCA K. METZ
19-2-08-12-07-201-004
737 SECOND ST.
BK 4240 PG 221

N/F LETO L. & REBECCA K. METZ
19-2-08-12-07-201-004.001
733 SECOND ST.
BK 4240 PG 221

N/F DOUGLAS J. POELING
19-2-08-01-19-403-031
737 W. MAIN ST.
BK 4464 PG 3397

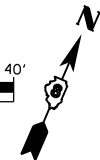
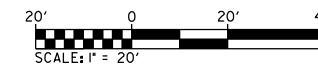
N/F KEVIN B. &
PAULA A. HAENNI
19-2-08-01-19-403-029
104 RODGERS LN.
DOC NO. 2014R35010



TBM "G-R" - BENCHTIE
IN POWER POLE
STA. 47+54.33, 20.99' RT
ELEV 526.83

PLAN SHEET LEGEND

----- LIMITS OF CONSTRUCTION



MODEL: Sheet 4
FILE NAME: H:\P222082 - Erwin Plegge Resurfacing Ph. 1 & 2\CADD\Microstation\CADD_Sheets\08223082-sch-plan.dgn



USER NAME = nick.moore	DESIGNED -	REVISED -
PLOT SCALE = 0.166666' / in.	DRAWN -	REVISED -
PLOT DATE = 10/2/2024	CHECKED -	REVISED -
	DATE -	REVISED -

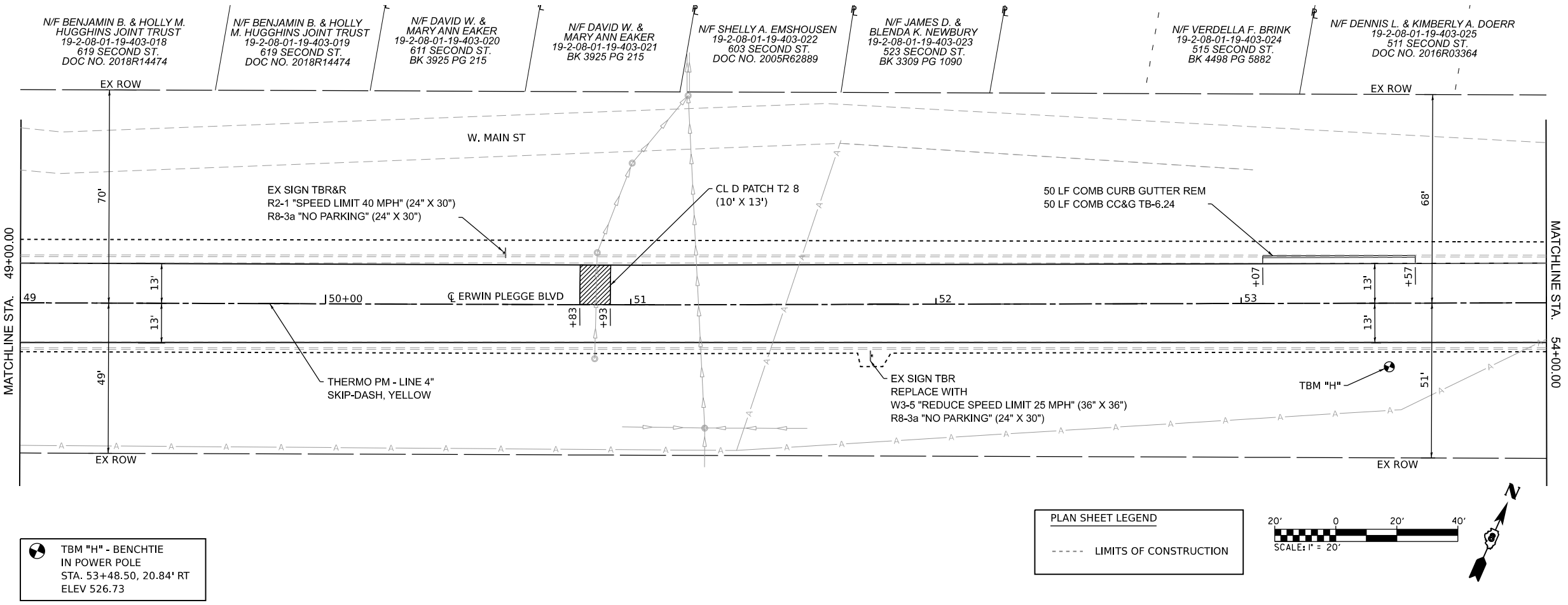
**STATE OF ILLINOIS
DEPARTMENT OF TRANSPORTATION**

PLAN SHEETS

SCALE: 1"=20' SHEET 4 OF 6 SHEETS STA. 39+00 TO STA. 49+00

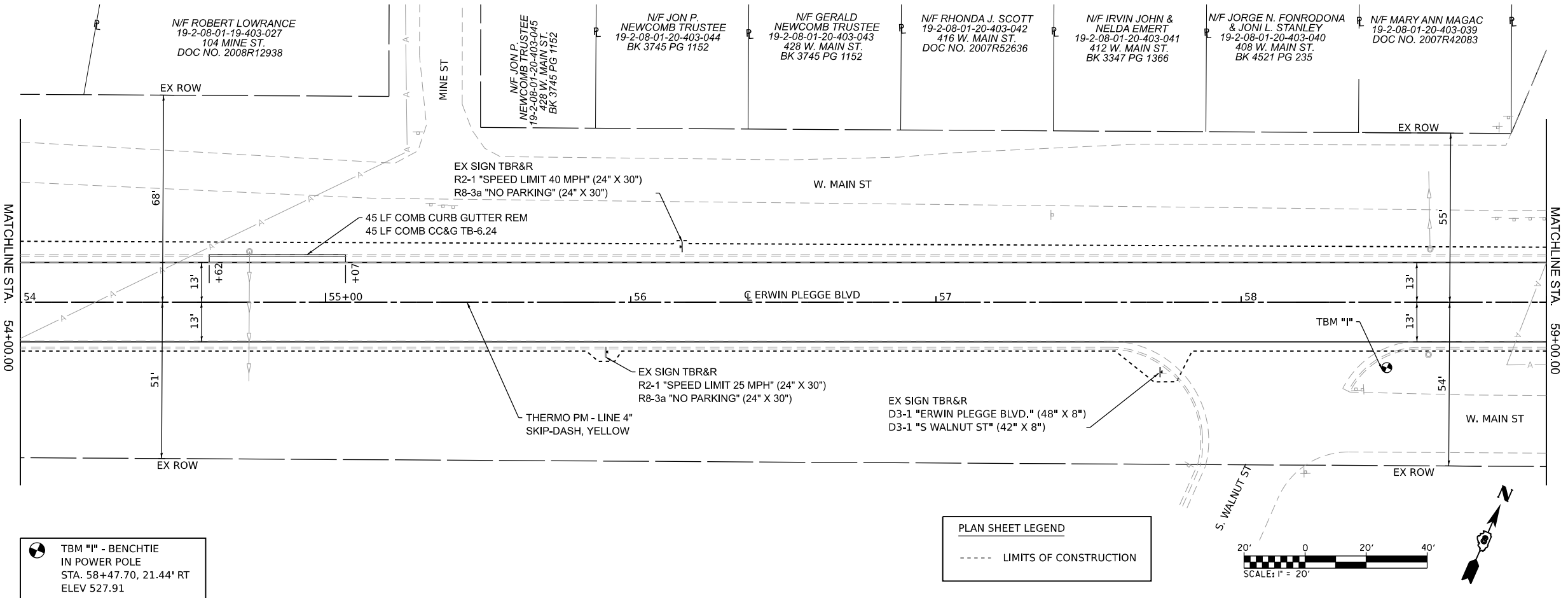
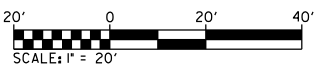
F.A.U. RTE.	SECTION	COUNTY	TOTAL SHEETS	SHEET NO.
8960	*	MADISON	19	14
CONTRACT NO. 97847				
ILLINOIS FED. AID PROJECT				

*22-00033-01-R5 & 23-00033-02-R5



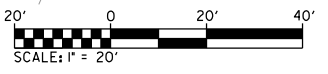
TBM "H" - BENCHTIE
 IN POWER POLE
 STA. 53+48.50, 20.84' RT
 ELEV 526.73

PLAN SHEET LEGEND
 - - - - - LIMITS OF CONSTRUCTION



TBM "I" - BENCHTIE
 IN POWER POLE
 STA. 58+47.70, 21.44' RT
 ELEV 527.91

PLAN SHEET LEGEND
 - - - - - LIMITS OF CONSTRUCTION



MODEL SHEET 5
 FILE NAME: H:\P222082 - Erwin Plegge Resurfacing Ph. 1 & 2\CADD\Microstation\CADD_Sheets\08223082-she-blan.dgn



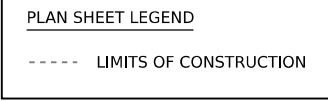
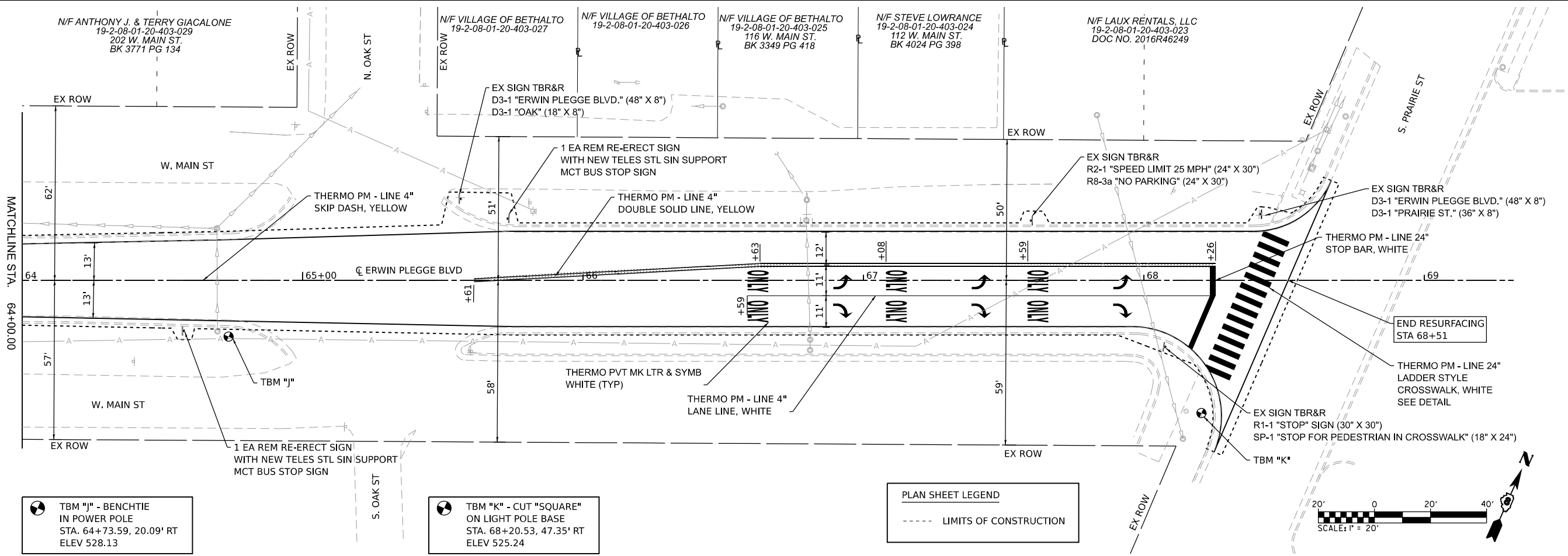
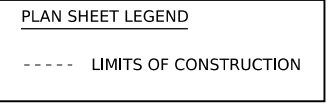
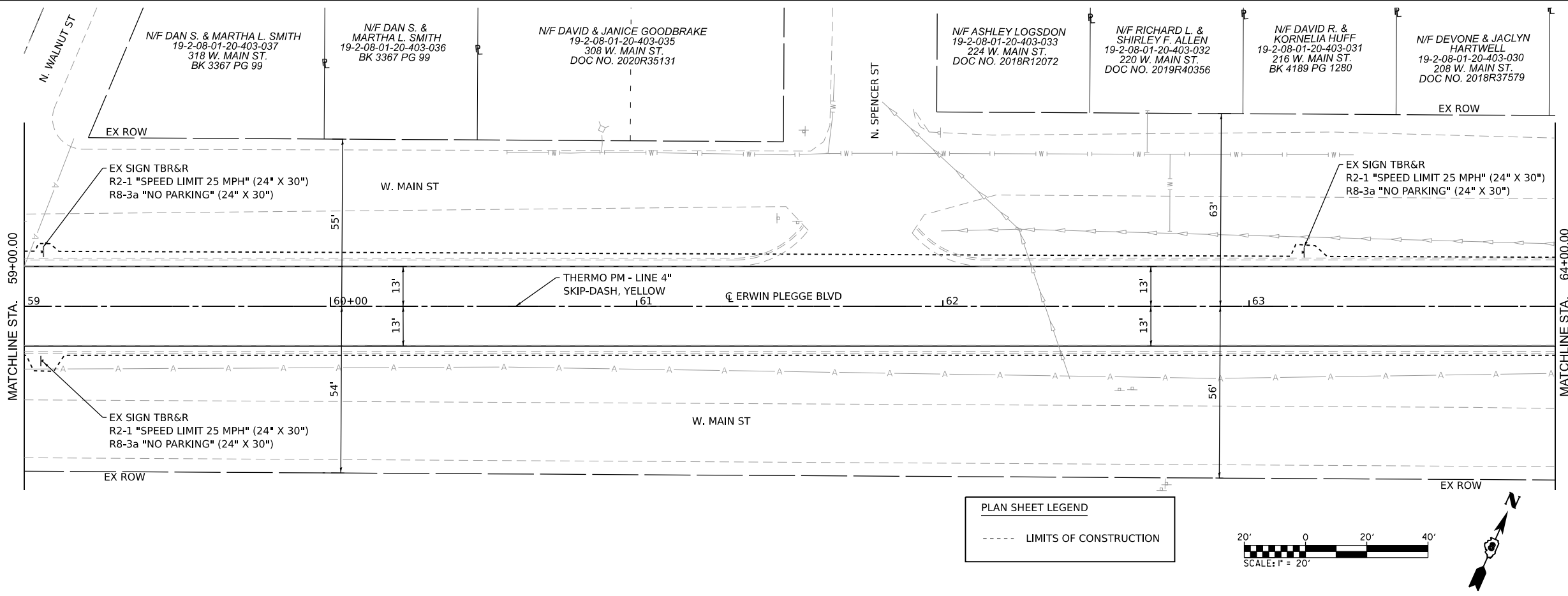
USER NAME = nick.moore	DESIGNED -	REVISED -
	DRAWN -	REVISED -
PLOT SCALE = 0.166666' / in.	CHECKED -	REVISED -
PLOT DATE = 10/2/2024	DATE -	REVISED -

**STATE OF ILLINOIS
 DEPARTMENT OF TRANSPORTATION**

PLAN SHEETS		
SCALE: 1"=20'	SHEET 5 OF 6 SHEETS	STA. 49+00 TO STA. 59+00

F.A.U. RTE.	SECTION	COUNTY	TOTAL SHEETS	SHEET NO.
8960	*	MADISON	19	15
CONTRACT NO. 97847				
ILLINOIS FED. AID PROJECT				

*22-00033-01-R5 & 23-00033-02-R5



TBM "J" - BENCHTIE IN POWER POLE STA. 64+73.59, 20.09' RT ELEV 528.13

TBM "K" - CUT "SQUARE" ON LIGHT POLE BASE STA. 68+20.53, 47.35' RT ELEV 525.24

MODEL: Sheet 6
 FILE NAME: H:\P222082 - Erwin Plegge Resurfacing Ph. 1 & 2\CADD\Microstation\CADD_Sheets\08223082-sch-plan.dgn



USER NAME = nick.moore
 PLOT SCALE = 0.16666633' / in.
 PLOT DATE = 10/2/2024

DESIGNED -
 DRAWN -
 CHECKED -
 DATE -

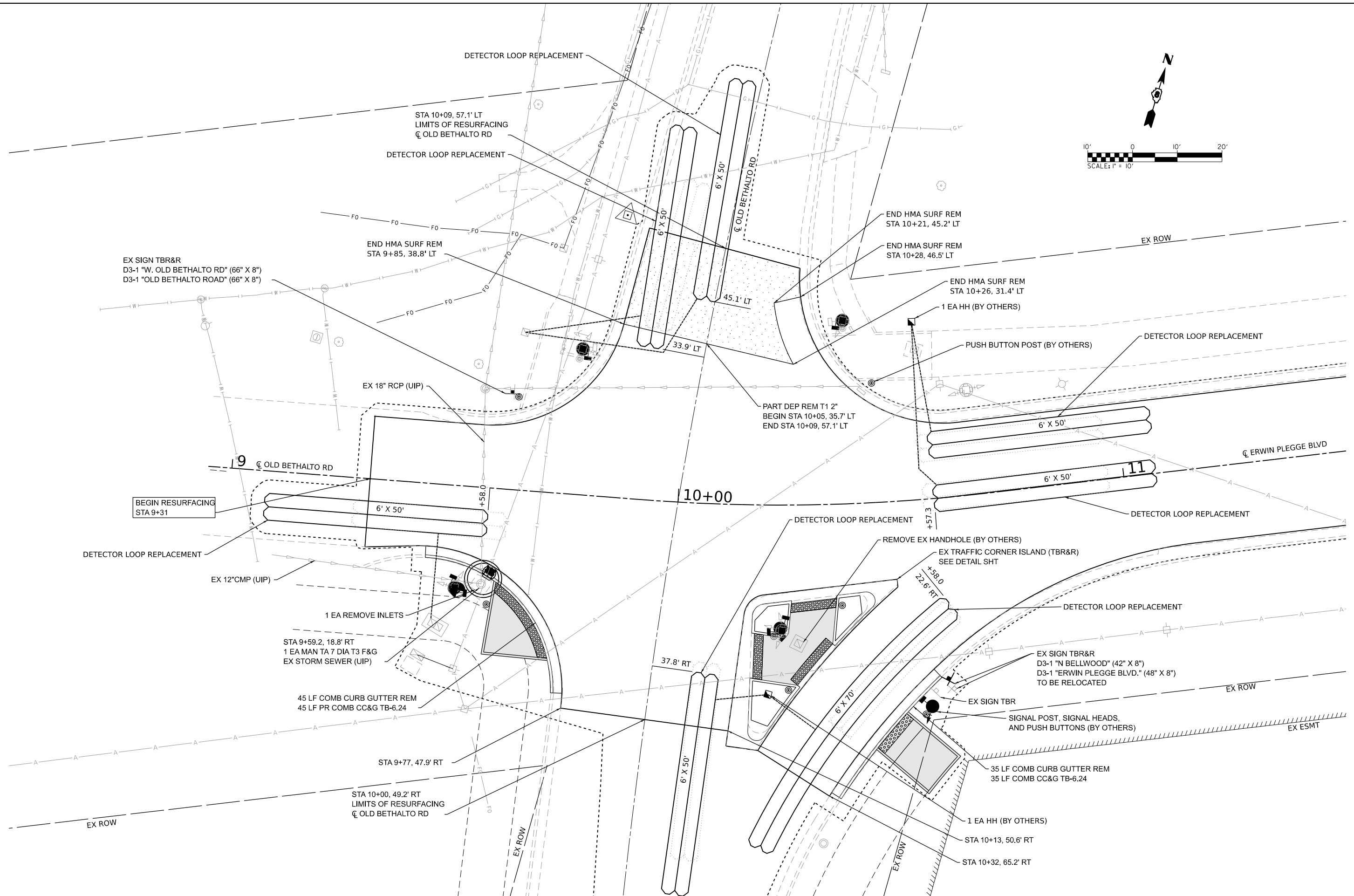
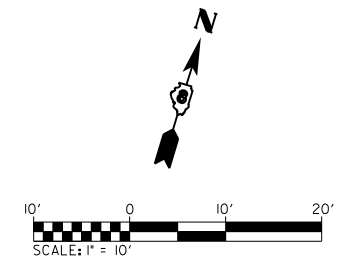
REVISED -
 REVISED -
 REVISED -
 REVISED -

STATE OF ILLINOIS
DEPARTMENT OF TRANSPORTATION

PLAN SHEETS
 SCALE: 1"=20' SHEET 6 OF 6 SHEETS STA. 59+00 TO STA. 68+51

F.A.U. RTE.	SECTION	COUNTY	TOTAL SHEETS	SHEET NO.
	*	MADISON	19	16
CONTRACT NO. 97847				

ILLINOIS FED. AID PROJECT *22-00033-01-R5 & 23-00033-02-R5



MODEL: Intersection - Intersection Detail (Sheet)
 FILE NAME: H:\P\223082 - Erwin Plegge Resurfacing Ph. 1 & 2\CADD\Microstation\CADD Sheets\08223082-sh-intersec.dgn



USER NAME = nick.moore	DESIGNED -	REVISED -
	DRAWN -	REVISED -
	CHECKED -	REVISED -
DATE = 9/30/2024	DATE -	REVISED -

STATE OF ILLINOIS
DEPARTMENT OF TRANSPORTATION

INTERSECTION DETAIL SHEETS
 SCALE: 1"=10' SHEET 1 OF 2 SHEETS STA. 8+50.00 TO STA. 11+50.00

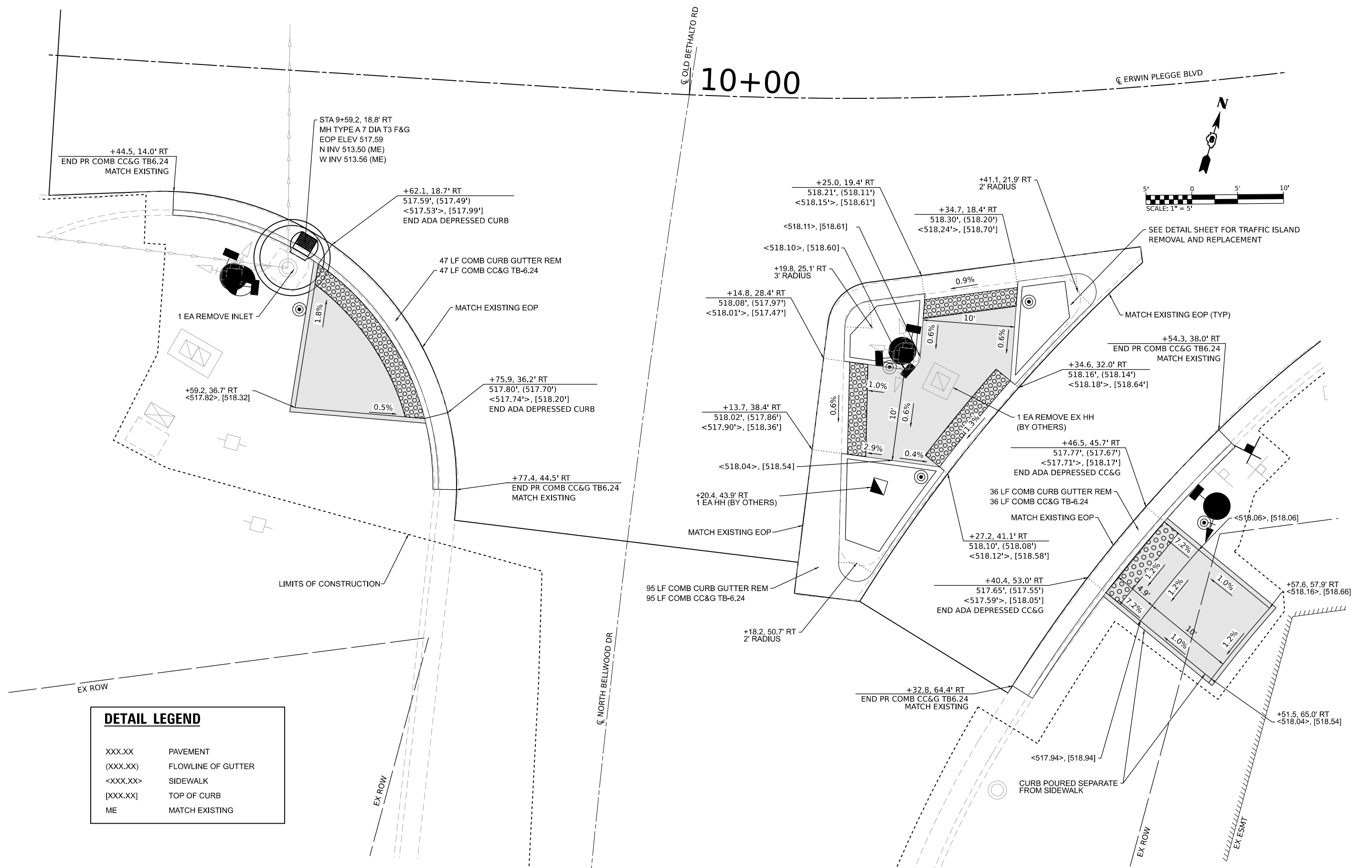
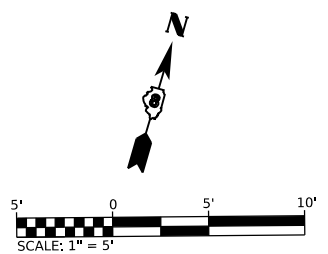
F.A.U. RTE.	SECTION	COUNTY	TOTAL SHEETS	SHEET NO.
8960	*	MADISON	19	17
CONTRACT NO. 97847				
ILLINOIS FED. AID PROJECT #22-00033-01-RS & 23-00033-02-RS				

10+00

ERWIN PLEGGÉ BLVD

OLD BETHALTO RD

NORTH BELLWOOD DR



DETAIL LEGEND	
XXX.XX	PAVEMENT
(XXX.XX)	FLOWLINE OF GUTTER
<XXX.XX>	SIDEWALK
[XXX.XX]	TOP OF CURB
ME	MATCH EXISTING

MODEL: P:\CL15 - Pkg 2 (Sheet) - Erwin Plegge Resurfacing Ph. 1 & 2\CADD\Microstation\CADD_Sheets\08223083>sh-curb-amps.dgn
 FILE NAME: H:\P222082 - Erwin Plegge Resurfacing Ph. 1 & 2\CADD\Microstation\CADD_Sheets\08223083>sh-curb-amps.dgn



USER NAME = nick.moore	DESIGNED -	REVISED -
PLOT SCALE = 0.166666" / in.	DRAWN -	REVISED -
PLOT DATE = 10/2/2024	CHECKED -	REVISED -
	DATE -	REVISED -

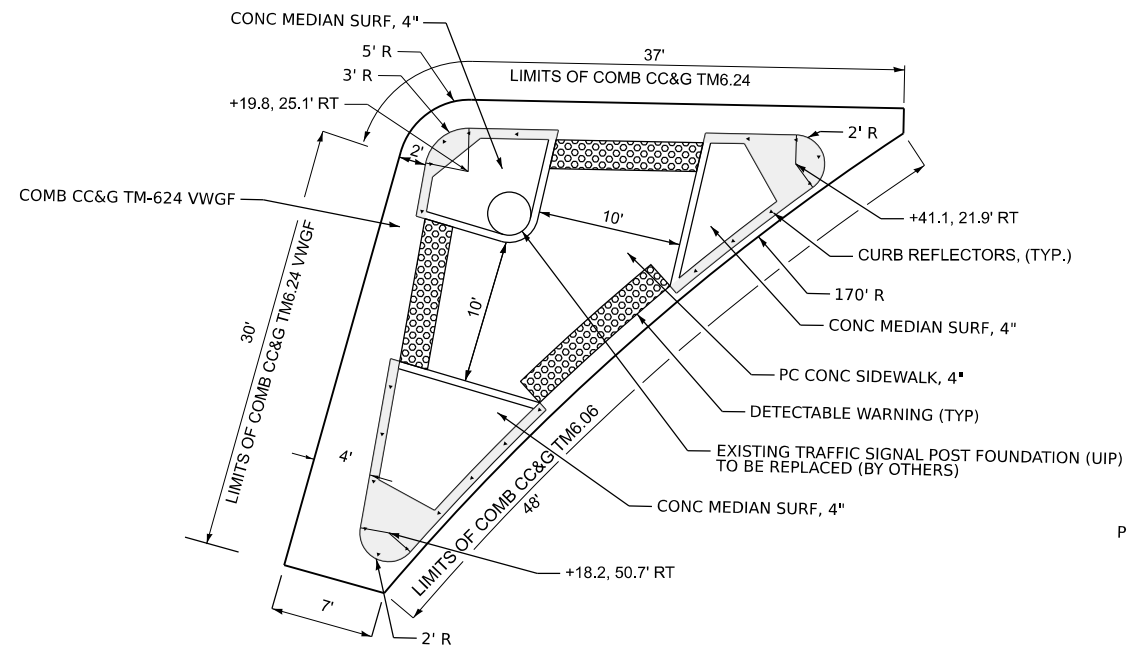
**STATE OF ILLINOIS
DEPARTMENT OF TRANSPORTATION**

INTERSECTION DETAIL SHEETS

SCALE: 1"=5' SHEET 2 OF 2 SHEETS STA. TO STA.

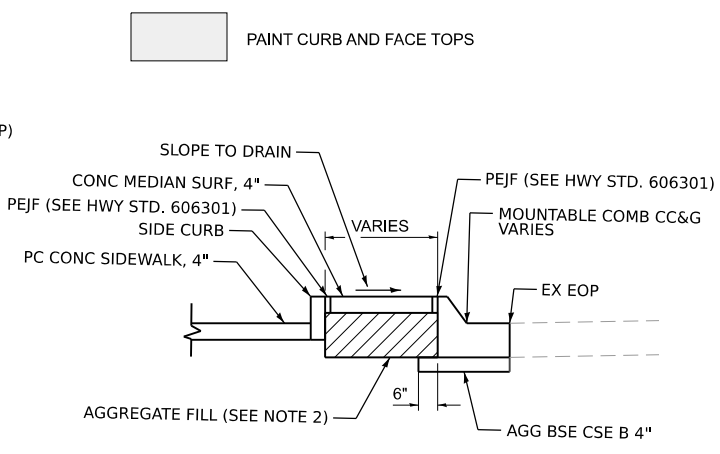
F.A.U. RTE.	SECTION	COUNTY	TOTAL SHEETS	SHEET NO.
8960	*	MADISON	19	18
CONTRACT NO. 97847				

*22-00033-01-R5 & 23-00033-02-R5

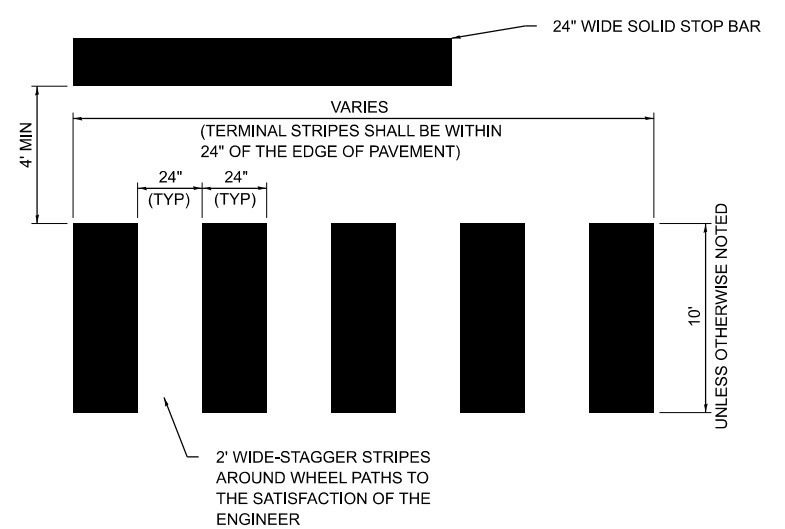


TRAFFIC ISLAND DETAIL
(NOT TO SCALE)

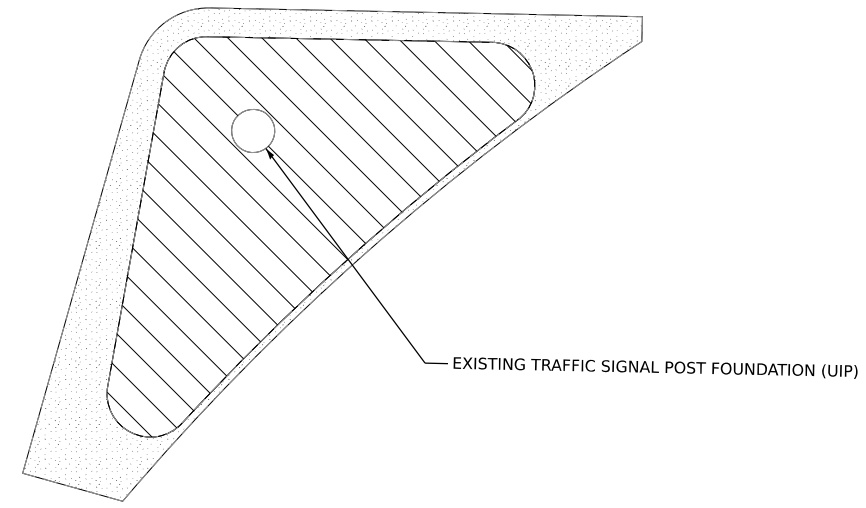
- NOTES:
1. USE THIS DETAIL AND HIGHWAY STANDARD 606301 FOR INTERMEDIATE ISLAND TO CONSTRUCT TRAFFIC ISLAND.
 2. AGGREGATE FILL SHALL BE PLACED UNDER THE CONCRETE MEDIAN SURFACE IN ACCORDANCE WITH SECTION 606.09 OF THE "STANDARD SPECIFICATIONS FOR THE ROAD AND BRIDGE CONSTRUCTION." THE COST SHALL BE INCLUDED IN THE COST OF CONCRETE MEDIAN SURFACE, 4 INCH.
 3. RAMPED NOSE AREA SHALL BE INCLUDED IN THE COST OF CONCRETE MEDIAN SURFACE, 4 INCH.
 4. CURB FACE AND TOPS SHALL BE PAINTED IN ACCORDANCE WITH SECTION 780.06 OF THE "STANDARD SPECIFICATIONS FOR THE ROAD AND BRIDGE CONSTRUCTION." CURB SHALL BE PAINTED WHITE.



PAINT CURB AND FACE TOPS

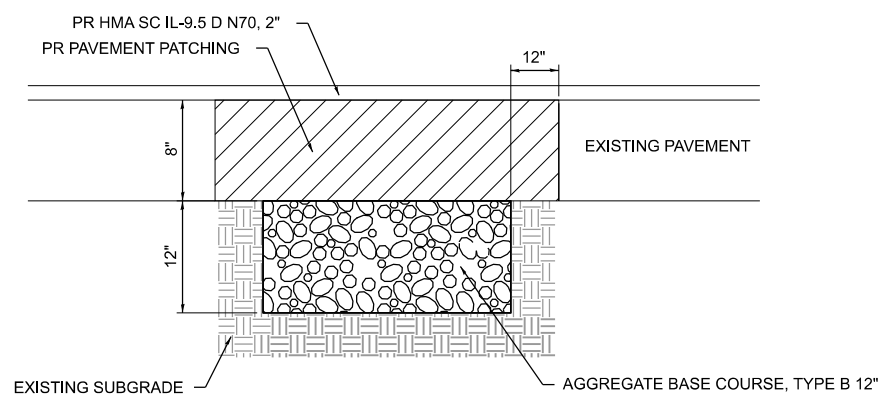


CROSSWALK DETAIL
(NOT TO SCALE)

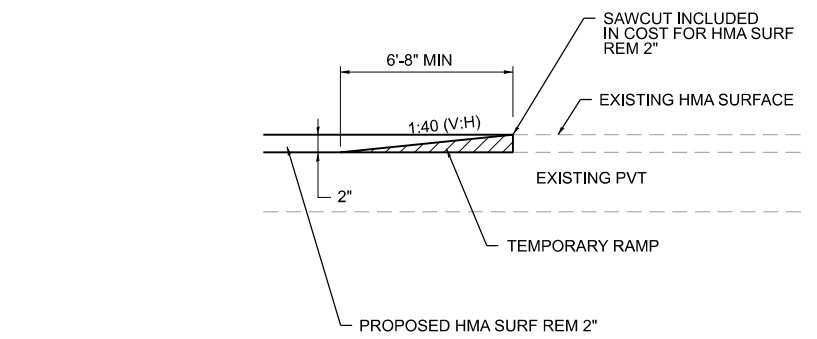


- CONCRETE MEDIAN SURFACE REMOVAL
- CONCRETE CURB AND GUTTER REMOVAL

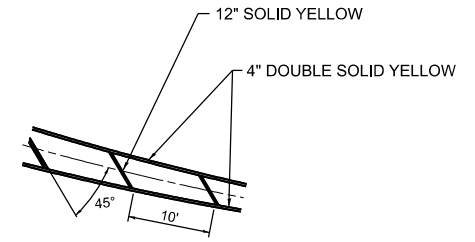
TRAFFIC ISLAND REMOVAL DETAIL
(NOT TO SCALE)



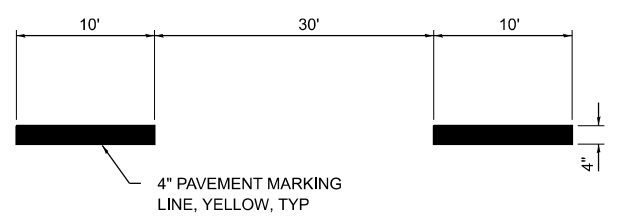
PAVEMENT PATCHING
(NOT TO SCALE)



TEMPORARY RAMP DETAIL
(NOT TO SCALE)



FLUSH ISLAND PAVEMENT MARKING DETAIL
(NOT TO SCALE)



SKIP DASH PAVEMENT MARKING DETAIL
(NOT TO SCALE)

MODEL: Detail-1 (Sheet) FILE NAME: H:\P\223082 - Erwin Plagge Resurfacing Ph. 1 & 2\CADD\Microstation\CADD Sheets\0823082-sh-deta1.s.dgn



USER NAME =	connor.barham	DESIGNED -	REvised -
		DRAWN -	REvised -
		CHECKED -	REvised -
		DATE -	REvised -
PLOT DATE =	9/17/2024		

STATE OF ILLINOIS
DEPARTMENT OF TRANSPORTATION

CONSTRUCTION DETAILS

SCALE: NTS SHEET 1 OF 1 SHEETS STA. TO STA.

F.A.U. RTE.	SECTION	COUNTY	TOTAL SHEETS	SHEET NO.
8960	*	MADISON	19	19
CONTRACT NO. 97847				

ILLINOIS FED. AID PROJECT *22-00033-01-RS & 23-00033-02-RS