



Illinois Department of Transportation

Office of Intermodal Project Implementation / Division of Aeronautics
1 Langhorne Bond Drive / Springfield, Illinois 62707-8415

January 8, 2025

SUBJECT: Lewis University Airport
Romeoville, Illinois
Will County
Illinois Project Number: LOT-5151
Contract No. LE057
Item No. 07A, January 17, 2025, Letting
Addendum A

NOTICE TO PROSPECTIVE BIDDERS

Attached is an addendum to the plans or proposal. This addendum involves revised and/or added material.

Reason for Addendum:

- 1) Clarifies rebar to be inserted in ends of Concrete Encased 4-Way, 2" PVC Duct.

To All Plan Holders:

Changes have been made to one (1) Construction Plan Sheet.

Plan Changes:

Replace the following original drawing with the attached drawing Sheet 25 in Addendum A:

- 1) Sheet 25 Electrical and Lighting Details -2

Special Provisions Changes:

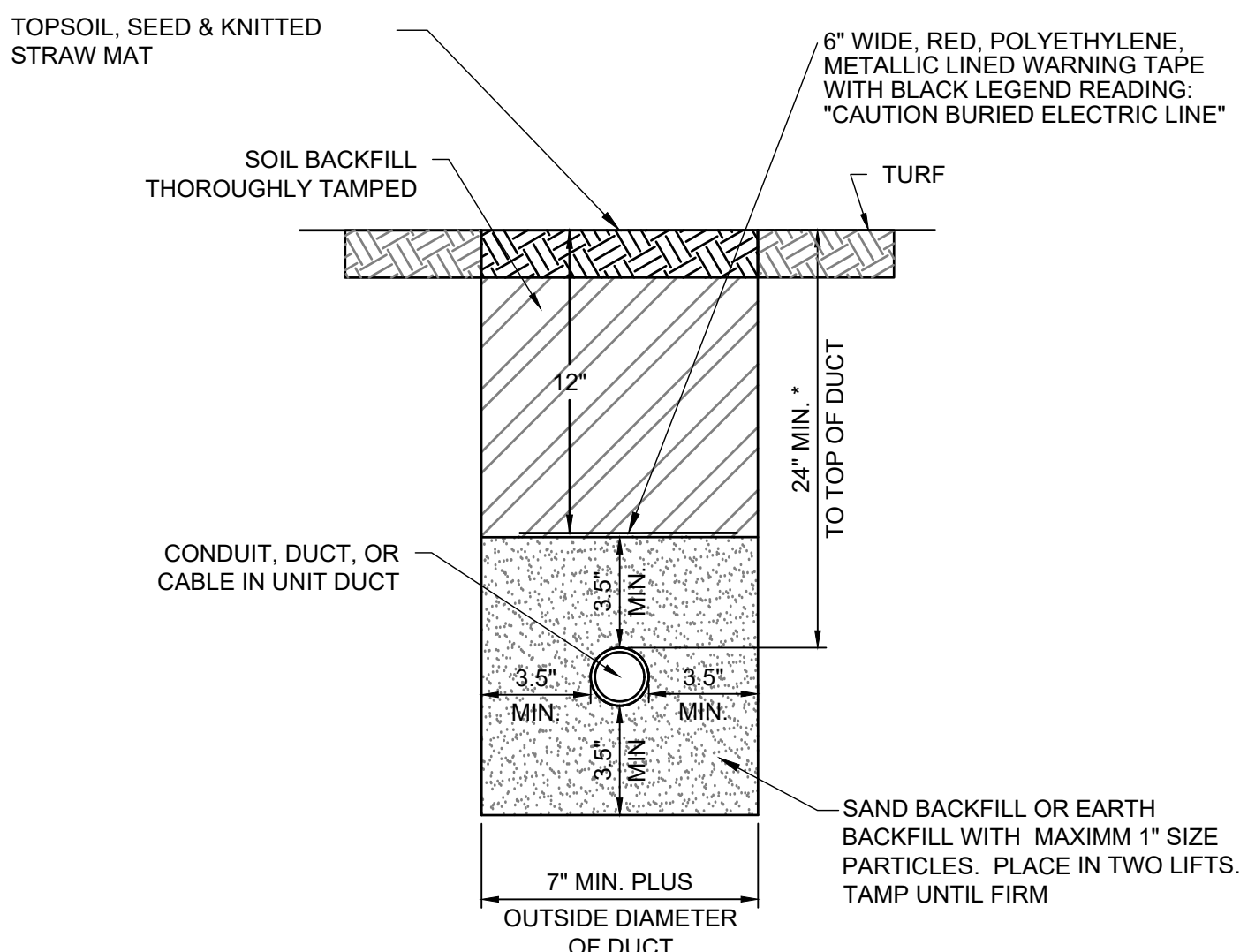
None.

Schedule of Prices Changes:

None.

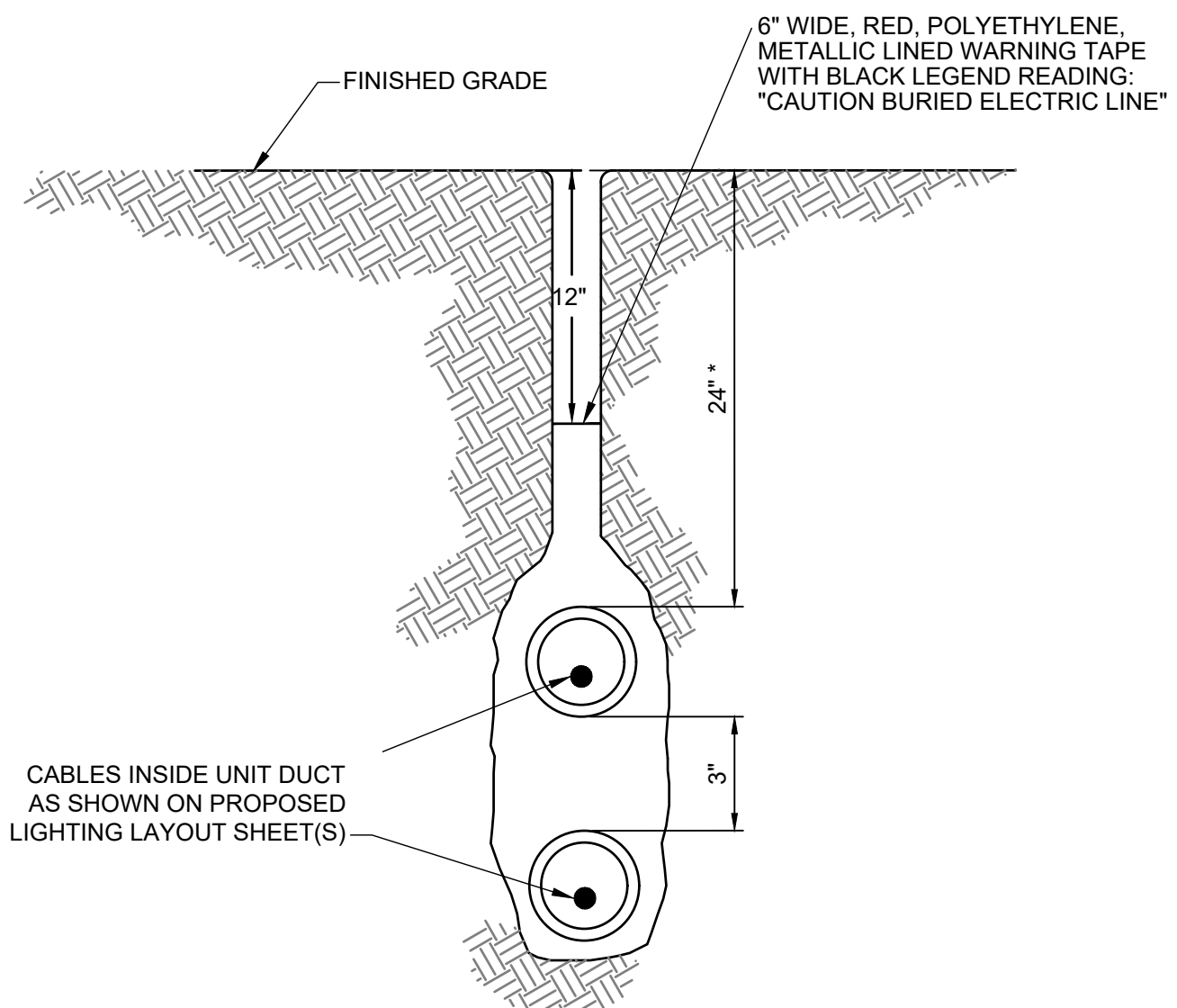
Prime contractors must utilize the enclosed material when preparing their bid and must include any changes to the Schedule of Prices in their bid.

Questions on this addendum may be directed Kris Salvatera, P.E., of Primera Engineers, Ltd., at 312.242.6362.



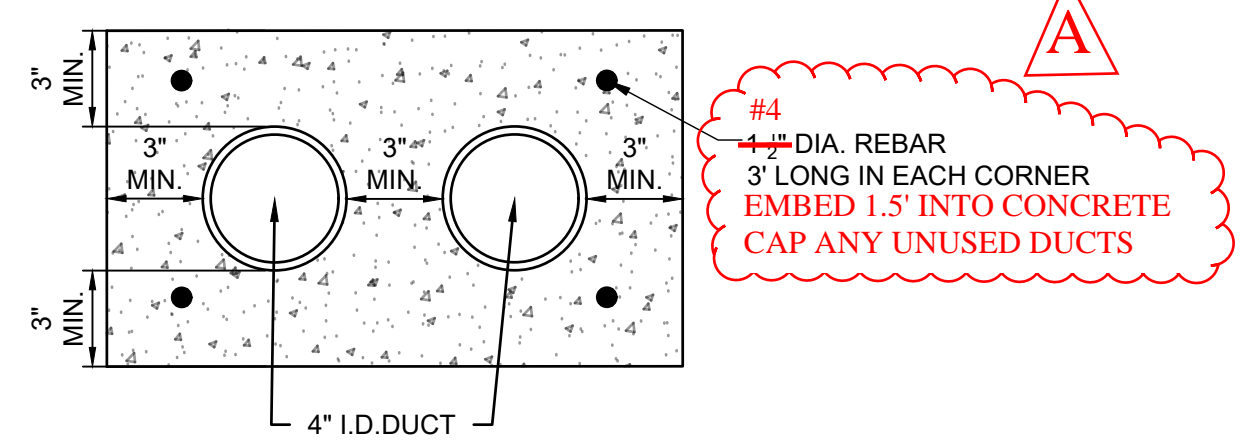
*CABLE IN TRENCH IN CULTIVATED FIELDS SHALL BE TRENCHED 42" DEEP.

CONDUIT IN TRENCH DETAIL - NON-PAVEMENT AREAS

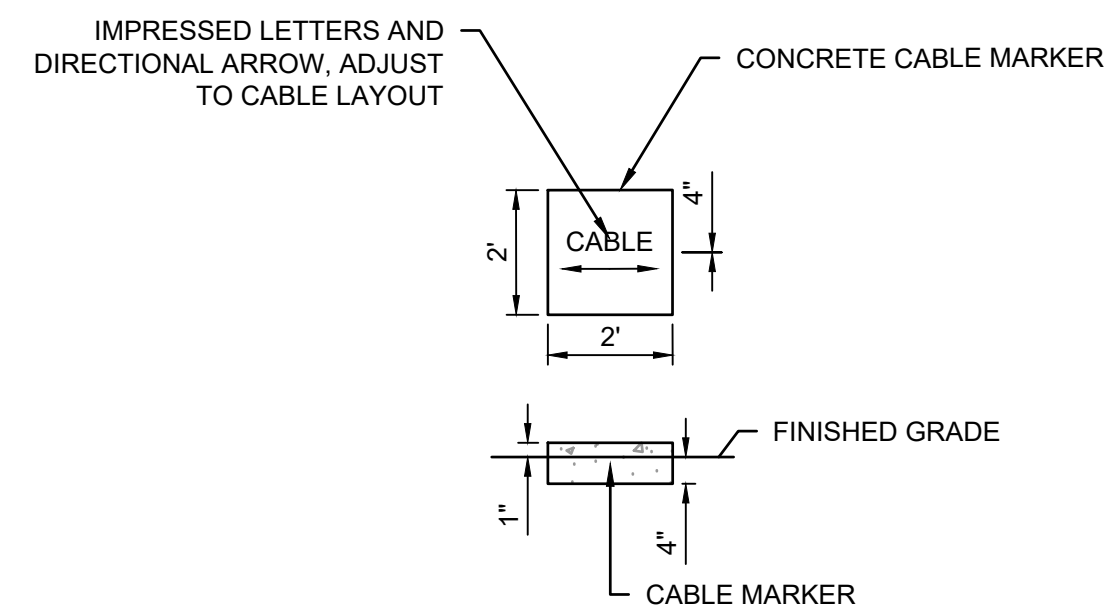


*CABLE IN TRENCH IN CULTIVATED FIELDS SHALL BE PLOWED 42" DEEP.

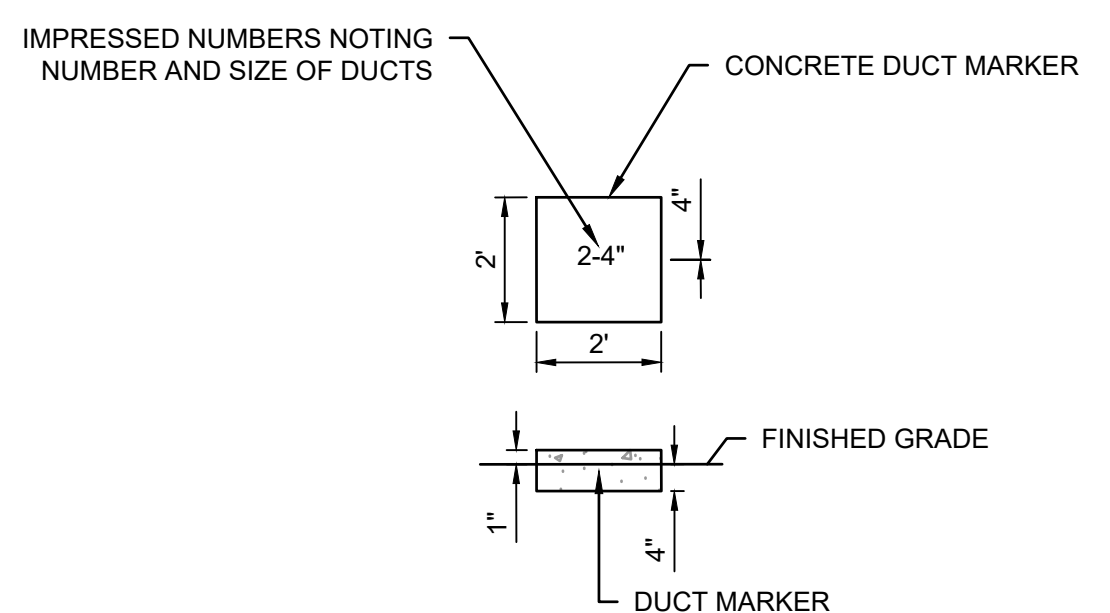
PLOWED CABLE DETAIL



2-WAY 4" CONCRETE ENCASED DUCT



TURF CABLE MARKERS



TURF DUCT MARKERS

UNIT DUCT TRENCH/PLOW NOTES:

1. DIMENSIONS FOR COVERAGE AND SEPARATION BETWEEN DUCTS ARE MINIMUM.
2. TRENCHES WITH MORE THAN TWO DUCTS OR CABLE IN UNIT DUCTS SHALL BE INCREASED 3" IN WIDTH PLUS DIAMETER OF RESPECTIVE DUCT FOR EACH ADDITIONAL CONDUIT, DUCT, OR CABLE IN UNIT DUCT; IF SPECIFIED ON PLANS TWO PARALLEL TRENCHES MAY BE CONSTRUCTED.
3. DEPTH OF TRENCHES SHALL BE AS SHOWN ABOVE UNLESS OTHERWISE SPECIFIED ON THE PLANS. MINIMUM COVER REQUIREMENTS FOR CABLES AND DUCTS AT AIRPORT RUNWAYS AND ADJACENT AREAS WHERE TRESPASSING IS PROHIBITED IS 24 INCHES. MINIMUM COVER REQUIREMENTS FOR DUCTS LOCATED IN CULTIVATED FIELDS IS 42". ADJUST/INCREASE BURIAL DEPTHS TO ACCOMMODATE SITE CONDITIONS, DRAINAGE, AND/OR OBSTRUCTIONS. COVER IS DEFINED AS THE SHORTEST DISTANCE IN INCHES MEASURED BETWEEN A POINT ON THE TOP SURFACE OF ANY DIRECT-BURIED CONDUCTOR, CABLE, CONDUIT, OR OTHER RACEWAY AND THE TOP SURFACE OF FINISHED GRADE, CONCRETE OR SIMILAR COVER.
4. HIGH VOLTAGE CIRCUITS (AIRFIELD LIGHTING 5000 VOLT SERIES CIRCUITS AND/OR OTHER CIRCUITS RATED ABOVE 600 VOLTS) AND LOW VOLTAGE CIRCUITS (RATED 600 VOLTS AND BELOW) SHALL NOT BE INSTALLED IN THE SAME RACEWAY, CONDUIT, DUCT, HANDHOLE, OR MANHOLE.
5. DUCT INTERFACE TO LIGHT POLES, HANDHOLES, MANHOLES, SPLICE CANS, OR OTHER JUNCTION STRUCTURES WILL BE CONSIDERED INCIDENTAL TO THE RESPECTIVE CABLE IN UNIT DUCT PAY ITEM OR RESPECTIVE DUCT PAY ITEM.
6. ALL DISTURBED SURFACES SHALL BE RESTORED TO THEIR ORIGINAL CONDITION. COST IS INCIDENTAL TO TRENCH.

DUCT BANK/MARKER NOTES:

1. DIMENSIONS FOR COVERAGE AND SEPARATION BETWEEN DUCTS ARE MINIMUM.
2. INCLUDE DUCT SPACERS TO MAINTAIN PROPER SEPARATION OF CONDUITS.
3. REBAR IS REQUIRED TO ACCOMMODATE FUTURE DUCT EXTESIONS AND INTERFACE AT DUCT BANK TERINATIONS. CONCRETE ENCASED DUCT BANKS TERMINATING IN HANDHOLES REQUIRE REBAR AT TERMINATIONS.
4. CONDUITS FOR CONCRETE ENCASED DUCT SHALL BE SCHEDULE 40 PVC.
5. MINIMUM DEPTH OF TOP OF DUCT ENCASEMENT SHALL BE 18" BELOW FINISHED GRADE.
6. HIGH VOLTAGE AND LOW VOLTAGE CIRCUITS SHALL NOT BE INSTALLED IN THE SAME RACEWAY, CONDUIT, DUCT, HANDHOLE, OR MANHOLE.
7. DUCT INTERFACE TO HANDHOLES OR MANHOLES WILL BE CONSIDERED INCIDENTAL TO THE DUCT.

CABLE/DUCT MARKER NOTES:

1. THE COST OF ALL DUCT MARKERS SHALL BE INCIDENTAL TO THE DUCT. THE COST OF ALL CABLE MARKERS SHALL BE INCIDENTAL TO THE CABLE.
2. DUCT MARKER TO BE PROVIDED AT EACH END OF EACH DUCT AS SHOWN ON THE PLANS.
3. CABLE MARKERS SHALL BE PLACED AT CHANGES OF DIRECTION AND APPROXIMATELY EVERY 200' ALONG CABLE RUNS.
4. CONCRETE MARKERS SHALL HAVE LETTERS 4" HIGH, 3" WIDE WITH WIDTH OF STROKE 1/2" AND 3/4" DEEP. ALL LETTERS, NUMBERS, AND ARROWS TO BE IMPRESSED.

No.	Description	By	Chk.	App.	Date

A Addendum A RMH RMH RMH 1/8/25

LEWIS UNIVERSITY AIRPORT
CONSTRUCT TRAINING ACTIVITY OPERATIONS APRON
IDA No: LOT-5151
BCM NO. LE057
SBG No: 3-17-SBGP-TBD

KEY PLAN

DRAWING TITLE
ELECTRICAL AND LIGHTING DETAILS - 2

25 OF 30
APPROVED SHEET NO.
RMH
CHECKED
KWS
DRAWN BY
JVJ
25

FILE NAME/LOCATION: P:\2020\20200112\10\W02\07 DRAWINGS\CURRENT DRAWING FILES\CADD SHEETS\LOT-5151-ELECTRICAL AND LIGHTING DETAILS.DWG
 DATE PRINTED: 11/27/2024 9:46 AM
 PRINTED BY: KRIS SALVETERA
 PLOT DEVICE DRIVER: ELOT STYLE TABLE - CIB
 T:\CADD\AutoCAD Standard Resources\AEC\AEC.ctb
 11/27/2024 9:46 AM © 2007 Primera