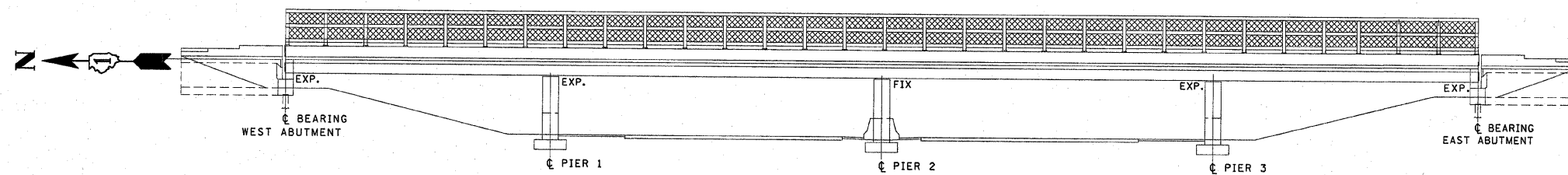


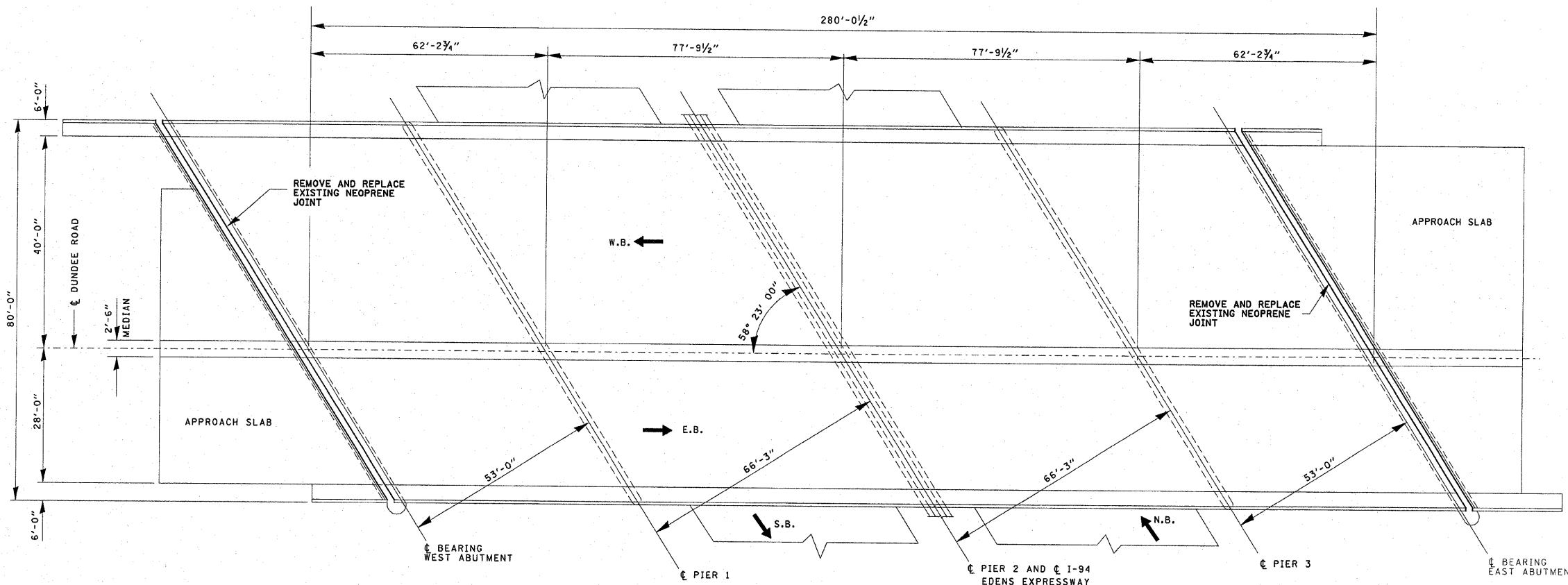
F. & U. No.	SECTION	COUNTY	TOTAL SHEETS	SHEET NO.
*	38 RS-4	COOK	36	11
STA.		TO STA.		
FED. ROAD DIST. NO. 1 ILLINOIS FED. AID PROJECT				
* F.A.P. 343		CONTRACT NO. 60814		
F.A.U. 1273				



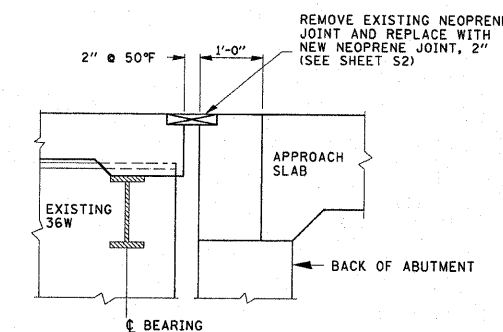
ELEVATION

NOTES

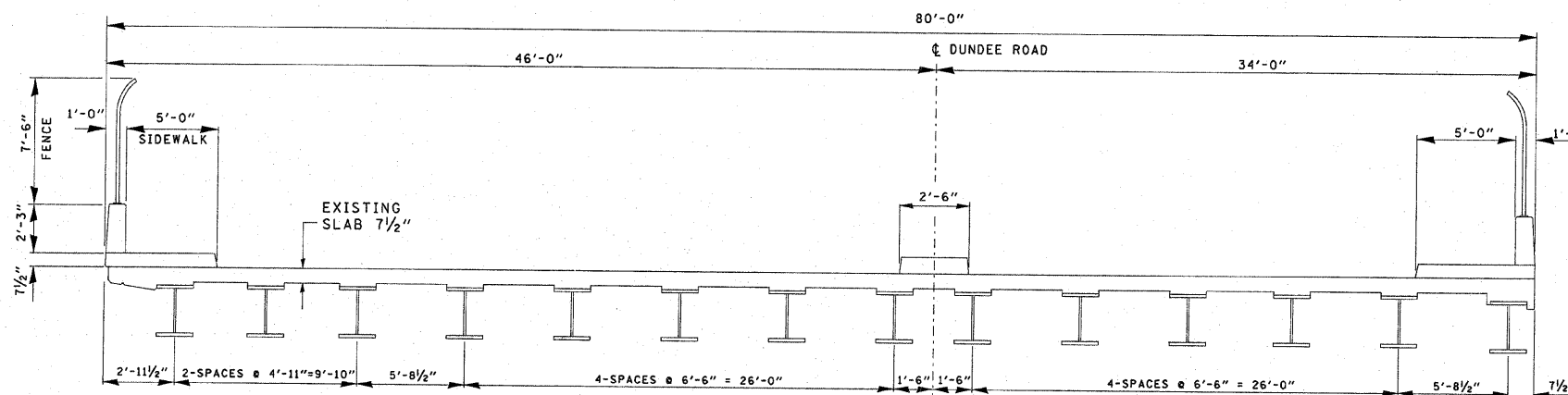
PLAN DIMENSIONS AND DETAILS RELATIVE TO EXISTING STRUCTURES HAVE BEEN TAKEN FROM EXISTING PLANS AND ARE SUBJECT TO NOMINAL CONSTRUCTION VARIATIONS. IT SHALL BE THE CONTRACTOR'S RESPONSIBILITY TO VERIFY SUCH DIMENSION AND DETAILS IN THE FIELD AND MAKE NECESSARY APPROVED ADJUSTMENTS PRIOR TO CONSTRUCTION OR ORDERING OF MATERIALS. SUCH VARIATION SHALL NOT BE CAUSE FOR ADDITIONAL COMPENSATION FOR A CHANGE IN THE SCOPE, HOWEVER, THE CONTRACTOR WILL BE PAID FOR THE QUANTITY ACTUALLY FURNISHED AT THE UNIT BID PRICE OR THE WORK.



PLAN



EXISTING TRANSVERSE JOINT AT EAST AND WEST ABUTMENT



CROSS SECTION

BILL OF MATERIALS

ITEM	UNIT	QUANTITY
NEOPRENE EXPANSION JOINT, 2"	FOOT	190

REVISIONS	
NAME	DATE
TMS	5/2000

ILLINOIS DEPARTMENT OF TRANSPORTATION  
**DUNDEE ROAD OVER I-94 (EDENS EXPRESSWAY) EXPANSION JOINT REPAIR SN 016-0939**  
 SCALE: NONE  
 DATE: APRIL 2000  
 DRAWN BY: MVT  
 CHECKED BY: TMS

10/10/2007 c:\p\ro\lect\rs\cd135899d3599aam32